



wwPDB X-ray Structure Validation Summary Report ⓘ

Aug 8, 2020 – 05:24 PM BST

PDB ID : 4ZEL
Title : Human dopamine beta-hydroxylase
Authors : Vendelboe, T.V.; Harris, P.; Christensen, H.E.M.; Harlos, K.; Walter, T.;
Zhao, Y.; Omari, K.
Deposited on : 2015-04-20
Resolution : 2.90 Å(reported)

This is a wwPDB X-ray Structure Validation Summary Report for a publicly released PDB entry.

We welcome your comments at validation@mail.wwpdb.org

A user guide is available at

<https://www.wwpdb.org/validation/2017/XrayValidationReportHelp>

with specific help available everywhere you see the ⓘ symbol.

The following versions of software and data (see [references ⓘ](#)) were used in the production of this report:

MolProbity : 4.02b-467
Mogul : 1.8.5 (274361), CSD as541be (2020)
Xtriage (Phenix) : 1.13
EDS : 2.13.1
Percentile statistics : 20191225.v01 (using entries in the PDB archive December 25th 2019)
Refmac : 5.8.0158
CCP4 : 7.0.044 (Gargrove)
Ideal geometry (proteins) : Engh & Huber (2001)
Ideal geometry (DNA, RNA) : Parkinson et al. (1996)
Validation Pipeline (wwPDB-VP) : 2.13.1

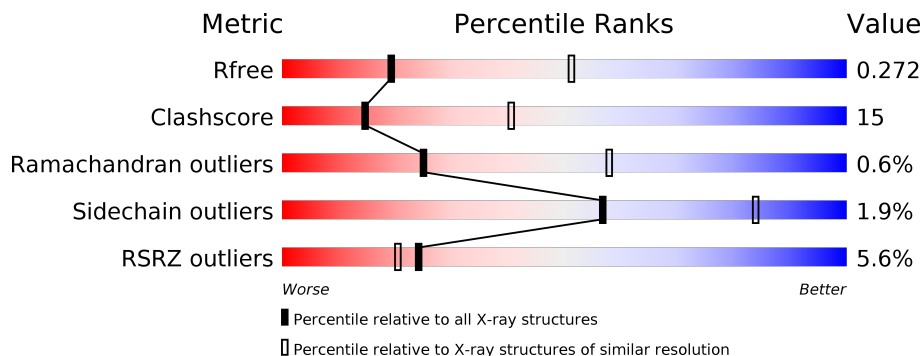
1 Overall quality at a glance

The following experimental techniques were used to determine the structure:

X-RAY DIFFRACTION

The reported resolution of this entry is 2.90 Å.

Percentile scores (ranging between 0-100) for global validation metrics of the entry are shown in the following graphic. The table shows the number of entries on which the scores are based.



Metric	Whole archive (#Entries)	Similar resolution (#Entries, resolution range(Å))
R_{free}	130704	1957 (2.90-2.90)
Clashscore	141614	2172 (2.90-2.90)
Ramachandran outliers	138981	2115 (2.90-2.90)
Sidechain outliers	138945	2117 (2.90-2.90)
RSRZ outliers	127900	1906 (2.90-2.90)

The table below summarises the geometric issues observed across the polymeric chains and their fit to the electron density. The red, orange, yellow and green segments on the lower bar indicate the fraction of residues that contain outliers for ≥ 3 , 2, 1 and 0 types of geometric quality criteria respectively. A grey segment represents the fraction of residues that are not modelled. The numeric value for each fraction is indicated below the corresponding segment, with a dot representing fractions $\leq 5\%$. The upper red bar (where present) indicates the fraction of residues that have poor fit to the electron density. The numeric value is given above the bar.

Mol	Chain	Length	Quality of chain
1	A	578	
1	B	578	
2	C	2	
3	D	3	
3	F	3	
4	E	4	

2 Entry composition [i](#)

There are 7 unique types of molecules in this entry. The entry contains 8939 atoms, of which 0 are hydrogens and 0 are deuteriums.

In the tables below, the ZeroOcc column contains the number of atoms modelled with zero occupancy, the AltConf column contains the number of residues with at least one atom in alternate conformation and the Trace column contains the number of residues modelled with at most 2 atoms.

- Molecule 1 is a protein called Dopamine beta-hydroxylase.

Mol	Chain	Residues	Atoms					ZeroOcc	AltConf	Trace
			Total	C	N	O	S			
1	A	550	Total 4396	C 2813	N 747	O 810	S 26	0	1	0
1	B	544	Total 4346	C 2784	N 742	O 795	S 25	0	2	0

- Molecule 2 is an oligosaccharide called 2-acetamido-2-deoxy-beta-D-glucopyranose-(1-4)-2-acetamido-2-deoxy-beta-D-glucopyranose.



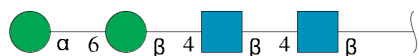
Mol	Chain	Residues	Atoms				ZeroOcc	AltConf	Trace
			Total	C	N	O			
2	C	2	Total 28	C 16	N 2	O 10	0	0	0

- Molecule 3 is an oligosaccharide called beta-D-mannopyranose-(1-4)-2-acetamido-2-deoxy-beta-D-glucopyranose-(1-4)-2-acetamido-2-deoxy-beta-D-glucopyranose.



Mol	Chain	Residues	Atoms				ZeroOcc	AltConf	Trace
			Total	C	N	O			
3	D	3	Total 39	C 22	N 2	O 15	0	0	0
3	F	3	Total 39	C 22	N 2	O 15	0	0	0

- Molecule 4 is an oligosaccharide called alpha-D-mannopyranose-(1-6)-beta-D-mannopyranose-(1-4)-2-acetamido-2-deoxy-beta-D-glucopyranose-(1-4)-2-acetamido-2-deoxy-beta-D-glucopyranose.

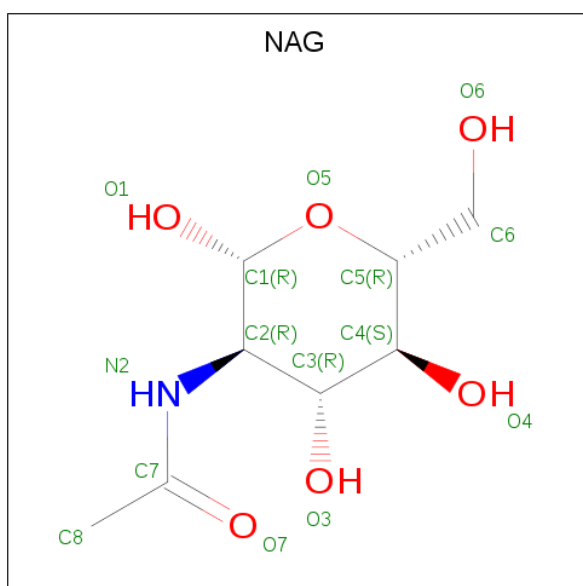


Mol	Chain	Residues	Atoms				ZeroOcc	AltConf	Trace
			Total	C	N	O			
4	E	4	50	28	2	20	0	0	0

- Molecule 5 is COPPER (II) ION (three-letter code: CU) (formula: Cu).

Mol	Chain	Residues	Atoms		ZeroOcc	AltConf
			Total	Cu		
5	A	1	1	1	0	0

- Molecule 6 is 2-acetamido-2-deoxy-beta-D-glucopyranose (three-letter code: NAG) (formula: C₈H₁₅NO₆).



Mol	Chain	Residues	Atoms				ZeroOcc	AltConf
			Total	C	N	O		
6	A	1	14	8	1	5	0	0
6	B	1	14	8	1	5	0	0

- Molecule 7 is water.

Mol	Chain	Residues	Atoms		ZeroOcc	AltConf
			Total	O		
7	A	8	8	8	0	0

Continued on next page...

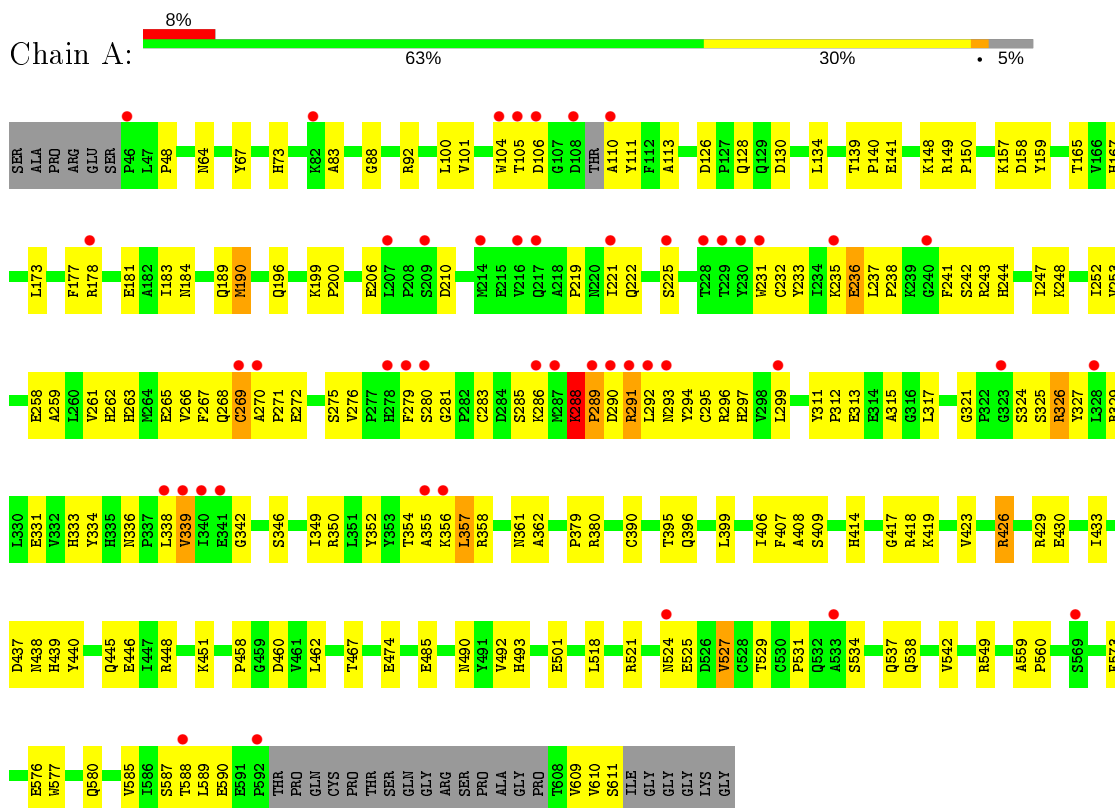
Continued from previous page...

Mol	Chain	Residues	Atoms		ZeroOcc	AltConf
7	B	4	Total	O	0	0
			4	4		

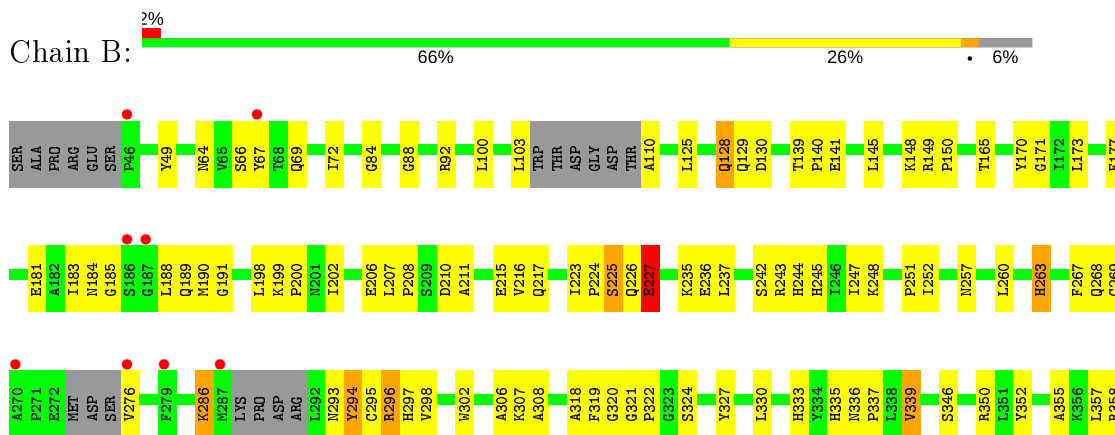
3 Residue-property plots [i](#)

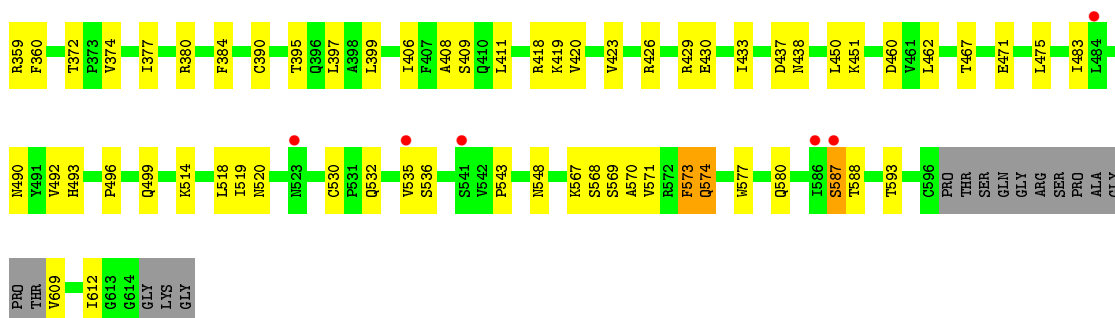
These plots are drawn for all protein, RNA, DNA and oligosaccharide chains in the entry. The first graphic for a chain summarises the proportions of the various outlier classes displayed in the second graphic. The second graphic shows the sequence view annotated by issues in geometry and electron density. Residues are color-coded according to the number of geometric quality criteria for which they contain at least one outlier: green = 0, yellow = 1, orange = 2 and red = 3 or more. A red dot above a residue indicates a poor fit to the electron density ($RSRZ > 2$). Stretches of 2 or more consecutive residues without any outlier are shown as a green connector. Residues present in the sample, but not in the model, are shown in grey.

- Molecule 1: Dopamine beta-hydroxylase



- Molecule 1: Dopamine beta-hydroxylase





- Molecule 2: 2-acetamido-2-deoxy-beta-D-glucopyranose-(1-4)-2-acetamido-2-deoxy-beta-D-glucopyranose



- Molecule 3: beta-D-mannopyranose-(1-4)-2-acetamido-2-deoxy-beta-D-glucopyranose-(1-4)-2-acetamido-2-deoxy-beta-D-glucopyranose



- Molecule 3: beta-D-mannopyranose-(1-4)-2-acetamido-2-deoxy-beta-D-glucopyranose-(1-4)-2-acetamido-2-deoxy-beta-D-glucopyranose



- Molecule 4: alpha-D-mannopyranose-(1-6)-beta-D-mannopyranose-(1-4)-2-acetamido-2-deoxy-beta-D-glucopyranose-(1-4)-2-acetamido-2-deoxy-beta-D-glucopyranose



4 Data and refinement statistics

Property	Value	Source
Space group	C 2 2 21	Depositor
Cell constants a, b, c, α , β , γ	102.81Å 119.06Å 224.83Å 90.00° 90.00° 90.00°	Depositor
Resolution (Å)	59.53 – 2.90 63.98 – 2.90	Depositor EDS
% Data completeness (in resolution range)	99.8 (59.53-2.90) 99.9 (63.98-2.90)	Depositor EDS
R_{merge}	0.15	Depositor
R_{sym}	(Not available)	Depositor
$\langle I/\sigma(I) \rangle$ ¹	1.98 (at 2.91Å)	Xtrriage
Refinement program	PHENIX	Depositor
R, R_{free}	0.230 , 0.270 0.232 , 0.272	Depositor DCC
R_{free} test set	1560 reflections (5.04%)	wwPDB-VP
Wilson B-factor (Å ²)	68.0	Xtrriage
Anisotropy	0.336	Xtrriage
Bulk solvent k_{sol} (e/Å ³), B_{sol} (Å ²)	0.31 , 45.3	EDS
L-test for twinning ²	$\langle L \rangle = 0.47$, $\langle L^2 \rangle = 0.30$	Xtrriage
Estimated twinning fraction	No twinning to report.	Xtrriage
F_o, F_c correlation	0.92	EDS
Total number of atoms	8939	wwPDB-VP
Average B, all atoms (Å ²)	75.0	wwPDB-VP

Xtrriage's analysis on translational NCS is as follows: *The largest off-origin peak in the Patterson function is 3.79% of the height of the origin peak. No significant pseudotranslation is detected.*

¹ Intensities estimated from amplitudes.

² Theoretical values of $\langle |L| \rangle$, $\langle L^2 \rangle$ for acentric reflections are 0.5, 0.333 respectively for untwinned datasets, and 0.375, 0.2 for perfectly twinned datasets.

5 Model quality [i](#)

5.1 Standard geometry [i](#)

Bond lengths and bond angles in the following residue types are not validated in this section: BMA, NAG, CU, MAN

The Z score for a bond length (or angle) is the number of standard deviations the observed value is removed from the expected value. A bond length (or angle) with $|Z| > 5$ is considered an outlier worth inspection. RMSZ is the root-mean-square of all Z scores of the bond lengths (or angles).

Mol	Chain	Bond lengths		Bond angles	
		RMSZ	# Z >5	RMSZ	# Z >5
1	A	0.37	0/4516	0.71	5/6144 (0.1%)
1	B	0.36	1/4466 (0.0%)	0.64	0/6073
All	All	0.37	1/8982 (0.0%)	0.68	5/12217 (0.0%)

Chiral center outliers are detected by calculating the chiral volume of a chiral center and verifying if the center is modelled as a planar moiety or with the opposite hand. A planarity outlier is detected by checking planarity of atoms in a peptide group, atoms in a mainchain group or atoms of a sidechain that are expected to be planar.

Mol	Chain	#Chirality outliers	#Planarity outliers
1	A	0	7
1	B	0	5
All	All	0	12

All (1) bond length outliers are listed below:

Mol	Chain	Res	Type	Atoms	Z	Observed(Å)	Ideal(Å)
1	B	227	GLU	CG-CD	-5.50	1.43	1.51

All (5) bond angle outliers are listed below:

Mol	Chain	Res	Type	Atoms	Z	Observed(°)	Ideal(°)
1	A	326	ARG	N-CA-C	7.17	130.35	111.00
1	A	357	LEU	CA-CB-CG	7.07	131.56	115.30
1	A	285	SER	N-CA-C	-6.88	92.43	111.00
1	A	288	LYS	CD-CE-NZ	6.73	127.17	111.70
1	A	269	CYS	CA-CB-SG	5.40	123.72	114.00

There are no chirality outliers.

5 of 12 planarity outliers are listed below:

Mol	Chain	Res	Type	Group
1	A	178	ARG	Peptide
1	A	189	GLN	Peptide
1	A	206	GLU	Peptide
1	A	288	LYS	Peptide
1	A	289	PRO	Peptide

5.2 Too-close contacts [i](#)

In the following table, the Non-H and H(model) columns list the number of non-hydrogen atoms and hydrogen atoms in the chain respectively. The H(added) column lists the number of hydrogen atoms added and optimized by MolProbity. The Clashes column lists the number of clashes within the asymmetric unit, whereas Symm-Clashes lists symmetry related clashes.

Mol	Chain	Non-H	H(model)	H(added)	Clashes	Symm-Clashes
1	A	4396	0	4284	166	0
1	B	4346	0	4245	108	1
2	C	28	0	25	0	0
3	D	39	0	34	2	0
3	F	39	0	34	0	0
4	E	50	0	43	0	0
5	A	1	0	0	0	0
6	A	14	0	13	0	0
6	B	14	0	13	0	0
7	A	8	0	0	1	1
7	B	4	0	0	1	1
All	All	8939	0	8691	269	2

The all-atom clashscore is defined as the number of clashes found per 1000 atoms (including hydrogen atoms). The all-atom clashscore for this structure is 15.

The worst 5 of 269 close contacts within the same asymmetric unit are listed below, sorted by their clash magnitude.

Atom-1	Atom-2	Interatomic distance (Å)	Clash overlap (Å)
1:A:288:LYS:HE2	1:A:289:PRO:HD3	1.45	0.95
1:B:243:ARG:HA	1:B:320:GLY:HA3	1.60	0.84
1:A:235:LYS:HD2	1:A:236:GLU:H	1.43	0.83
1:A:429:ARG:NH1	1:A:587:SER:OG	2.12	0.83
1:A:248:LYS:HB3	1:A:352:TYR:HB2	1.61	0.83

All (2) symmetry-related close contacts are listed below. The label for Atom-2 includes the symmetry operator and encoded unit-cell translations to be applied.

Atom-1	Atom-2	Interatomic distance (Å)	Clash overlap (Å)
7:A:807:HOH:O	7:B:804:HOH:O[5_555]	2.08	0.12
1:B:359:ARG:NH1	1:B:593:THR:OG1[4_555]	2.17	0.03

5.3 Torsion angles [i](#)

5.3.1 Protein backbone [i](#)

In the following table, the Percentiles column shows the percent Ramachandran outliers of the chain as a percentile score with respect to all X-ray entries followed by that with respect to entries of similar resolution.

The Analysed column shows the number of residues for which the backbone conformation was analysed, and the total number of residues.

Mol	Chain	Analysed	Favoured	Allowed	Outliers	Percentiles
1	A	545/578 (94%)	513 (94%)	27 (5%)	5 (1%)	17 48
1	B	536/578 (93%)	507 (95%)	27 (5%)	2 (0%)	34 66
All	All	1081/1156 (94%)	1020 (94%)	54 (5%)	7 (1%)	25 58

5 of 7 Ramachandran outliers are listed below:

Mol	Chain	Res	Type
1	A	293	ASN
1	A	190[A]	MET
1	A	190[B]	MET
1	B	569	SER
1	A	527	VAL

5.3.2 Protein sidechains [i](#)

In the following table, the Percentiles column shows the percent sidechain outliers of the chain as a percentile score with respect to all X-ray entries followed by that with respect to entries of similar resolution.

The Analysed column shows the number of residues for which the sidechain conformation was analysed, and the total number of residues.

Mol	Chain	Analysed	Rotameric	Outliers	Percentiles
1	A	485/504 (96%)	478 (99%)	7 (1%)	67 89
1	B	479/504 (95%)	466 (97%)	13 (3%)	44 77

Continued on next page...

Continued from previous page...

Mol	Chain	Analysed	Rotameric	Outliers	Percentiles
All	All	964/1008 (96%)	944 (98%)	20 (2%)	57 81

5 of 20 residues with a non-rotameric sidechain are listed below:

Mol	Chain	Res	Type
1	B	129	GLN
1	B	225	SER
1	B	286	LYS
1	B	64	ASN
1	B	128	GLN

Some sidechains can be flipped to improve hydrogen bonding and reduce clashes. All (5) such sidechains are listed below:

Mol	Chain	Res	Type
1	A	128	GLN
1	A	333	HIS
1	A	335	HIS
1	B	532	GLN
1	B	580	GLN

5.3.3 RNA [i](#)

There are no RNA molecules in this entry.

5.4 Non-standard residues in protein, DNA, RNA chains [i](#)

There are no non-standard protein/DNA/RNA residues in this entry.

5.5 Carbohydrates [i](#)

12 monosaccharides are modelled in this entry.

In the following table, the Counts columns list the number of bonds (or angles) for which Mogul statistics could be retrieved, the number of bonds (or angles) that are observed in the model and the number of bonds (or angles) that are defined in the Chemical Component Dictionary. The Link column lists molecule types, if any, to which the group is linked. The Z score for a bond length (or angle) is the number of standard deviations the observed value is removed from the expected value. A bond length (or angle) with $|Z| > 2$ is considered an outlier worth inspection. RMSZ is the root-mean-square of all Z scores of the bond lengths (or angles).

Mol	Type	Chain	Res	Link	Bond lengths			Bond angles		
					Counts	RMSZ	# Z > 2	Counts	RMSZ	# Z > 2
2	NAG	C	1	1,2	14,14,15	0.75	1 (7%)	17,19,21	1.08	1 (5%)
2	NAG	C	2	2	14,14,15	0.25	0	17,19,21	0.44	0
3	NAG	D	1	1,3	14,14,15	0.91	1 (7%)	17,19,21	0.87	1 (5%)
3	NAG	D	2	3	14,14,15	0.50	0	17,19,21	0.44	0
3	BMA	D	3	3	11,11,12	0.55	0	15,15,17	0.97	1 (6%)
4	NAG	E	1	1,4	14,14,15	0.33	0	17,19,21	0.65	0
4	NAG	E	2	4	14,14,15	0.42	0	17,19,21	0.77	0
4	BMA	E	3	4	11,11,12	0.82	0	15,15,17	1.44	2 (13%)
4	MAN	E	4	4	11,11,12	0.76	0	15,15,17	1.64	3 (20%)
3	NAG	F	1	1,3	14,14,15	0.51	0	17,19,21	0.41	0
3	NAG	F	2	3	14,14,15	0.26	0	17,19,21	0.44	0
3	BMA	F	3	3	11,11,12	0.71	0	15,15,17	0.76	0

In the following table, the Chirals column lists the number of chiral outliers, the number of chiral centers analysed, the number of these observed in the model and the number defined in the Chemical Component Dictionary. Similar counts are reported in the Torsion and Rings columns. '-' means no outliers of that kind were identified.

Mol	Type	Chain	Res	Link	Chirals	Torsions	Rings
2	NAG	C	1	1,2	-	4/6/23/26	0/1/1/1
2	NAG	C	2	2	-	2/6/23/26	0/1/1/1
3	NAG	D	1	1,3	-	2/6/23/26	0/1/1/1
3	NAG	D	2	3	-	4/6/23/26	0/1/1/1
3	BMA	D	3	3	-	2/2/19/22	0/1/1/1
4	NAG	E	1	1,4	-	0/6/23/26	0/1/1/1
4	NAG	E	2	4	-	2/6/23/26	0/1/1/1
4	BMA	E	3	4	-	2/2/19/22	1/1/1/1
4	MAN	E	4	4	-	1/2/19/22	0/1/1/1
3	NAG	F	1	1,3	-	4/6/23/26	0/1/1/1
3	NAG	F	2	3	-	2/6/23/26	0/1/1/1
3	BMA	F	3	3	-	0/2/19/22	0/1/1/1

All (2) bond length outliers are listed below:

Mol	Chain	Res	Type	Atoms	Z	Observed(Å)	Ideal(Å)
2	C	1	NAG	O5-C1	2.63	1.47	1.43
3	D	1	NAG	O5-C1	-2.62	1.39	1.43

The worst 5 of 8 bond angle outliers are listed below:

Mol	Chain	Res	Type	Atoms	Z	Observed(°)	Ideal(°)
4	E	4	MAN	C1-O5-C5	4.49	118.27	112.19
2	C	1	NAG	C1-O5-C5	4.26	117.97	112.19
4	E	3	BMA	C1-O5-C5	4.02	117.64	112.19
4	E	4	MAN	O5-C1-C2	2.94	115.31	110.77
4	E	3	BMA	O2-C2-C3	-2.35	105.44	110.14

There are no chirality outliers.

5 of 25 torsion outliers are listed below:

Mol	Chain	Res	Type	Atoms
2	C	1	NAG	C4-C5-C6-O6
3	F	1	NAG	O5-C5-C6-O6
4	E	3	BMA	C4-C5-C6-O6
3	D	1	NAG	O5-C5-C6-O6
4	E	3	BMA	O5-C5-C6-O6

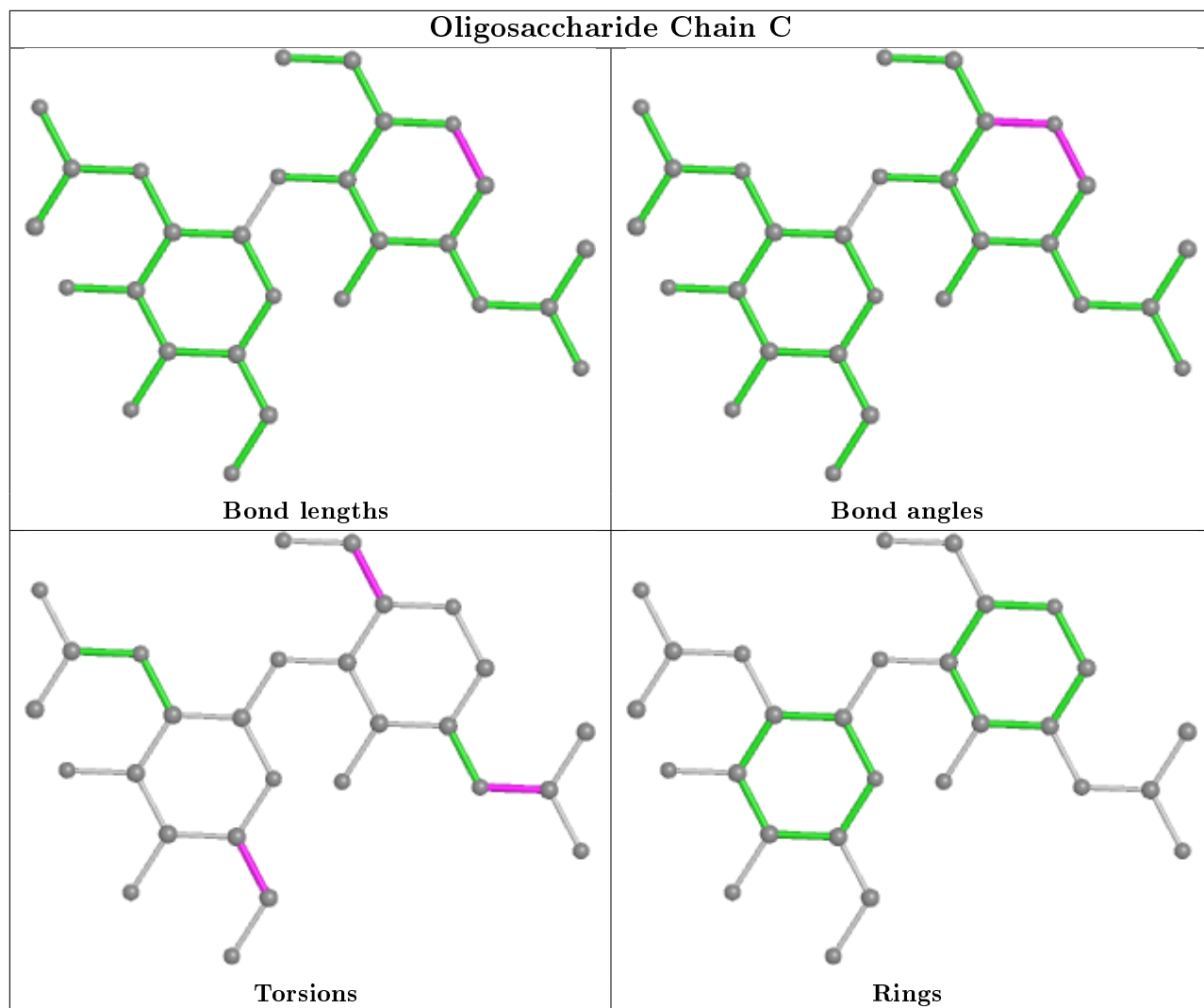
All (1) ring outliers are listed below:

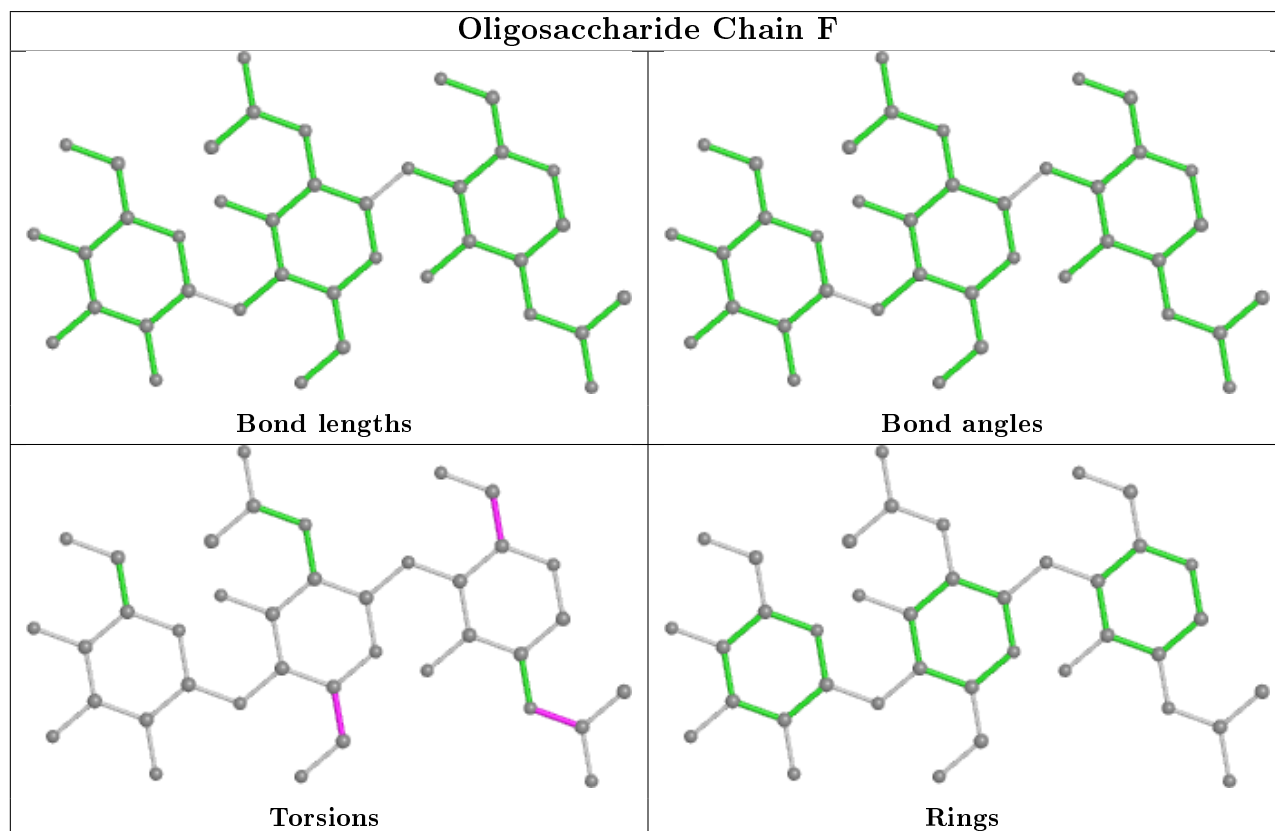
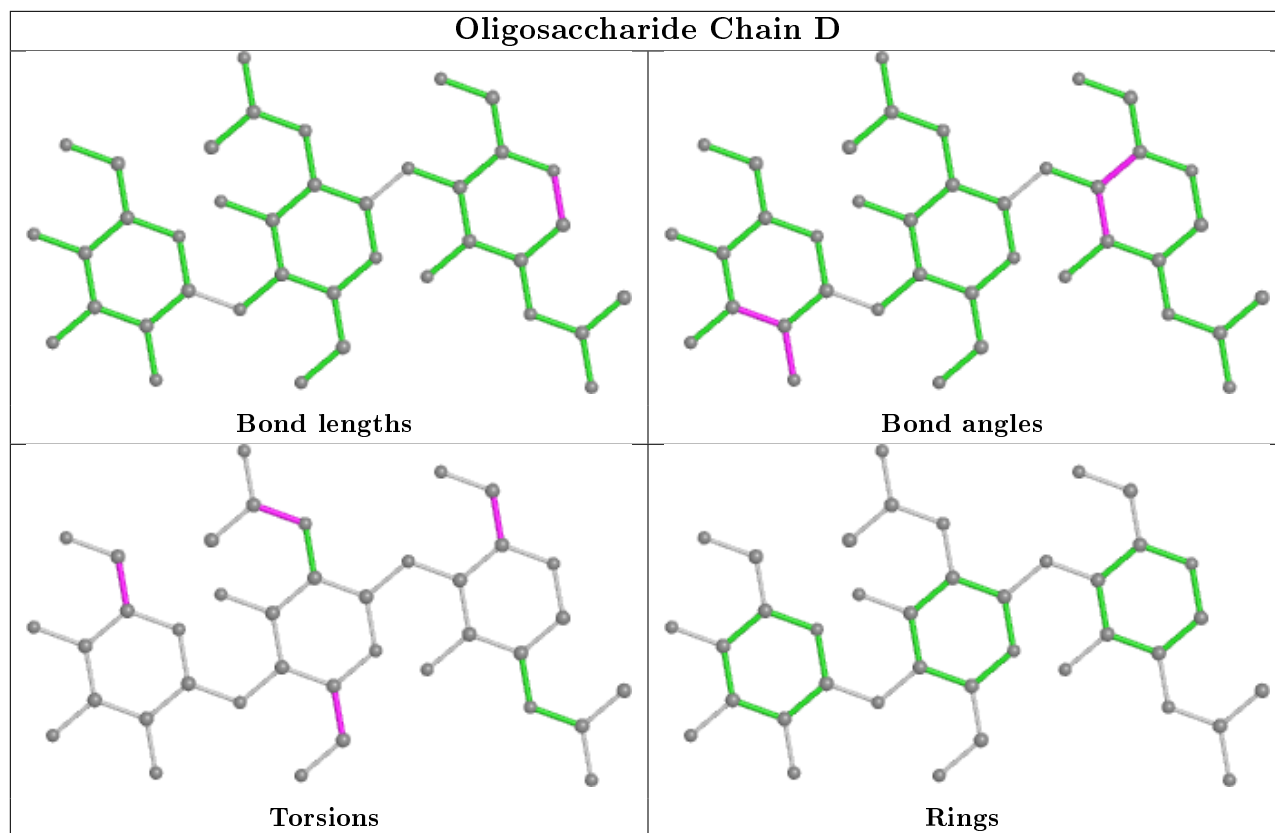
Mol	Chain	Res	Type	Atoms
4	E	3	BMA	C1-C2-C3-C4-C5-O5

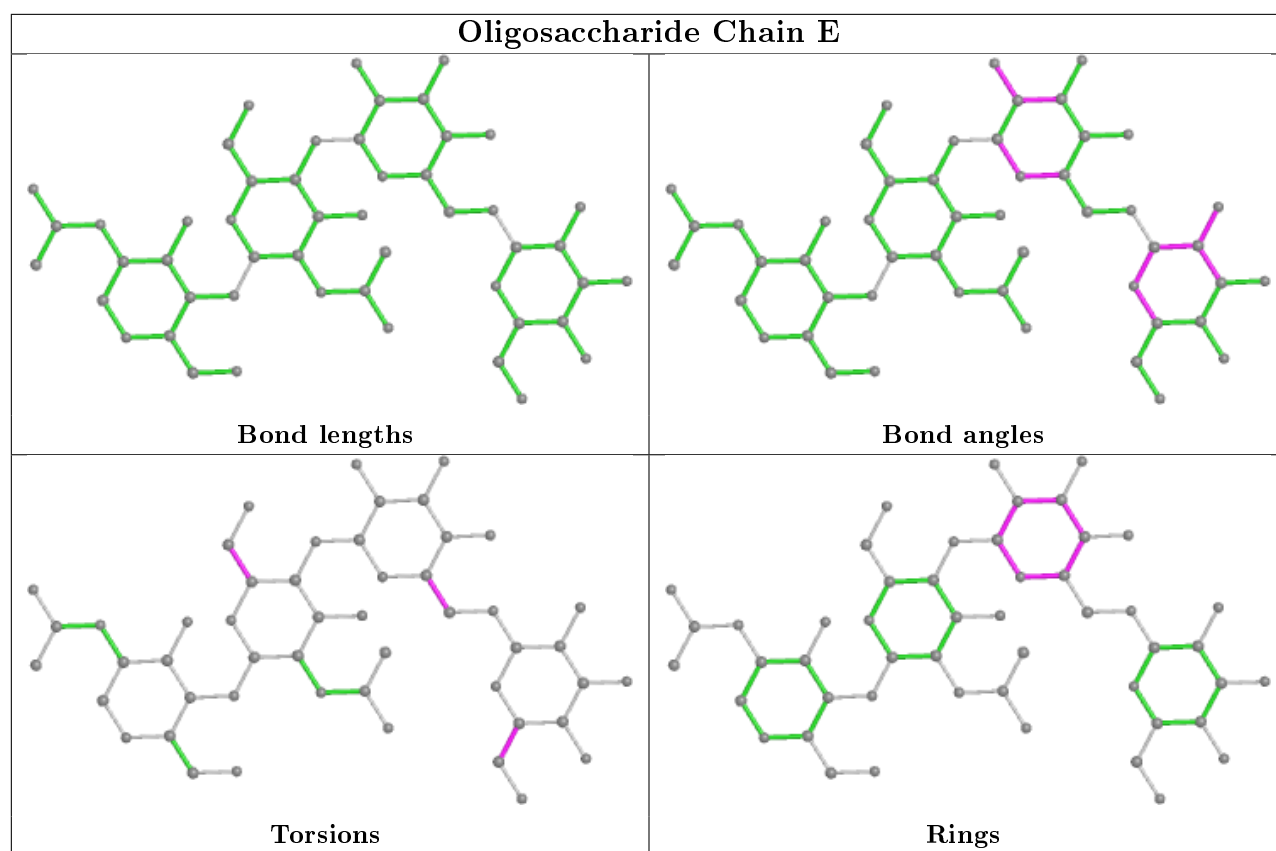
1 monomer is involved in 2 short contacts:

Mol	Chain	Res	Type	Clashes	Symm-Clashes
3	D	1	NAG	2	0

The following is a two-dimensional graphical depiction of Mogul quality analysis of bond lengths, bond angles, torsion angles, and ring geometry for oligosaccharide.







5.6 Ligand geometry [i](#)

Of 3 ligands modelled in this entry, 1 is monoatomic - leaving 2 for Mogul analysis.

In the following table, the Counts columns list the number of bonds (or angles) for which Mogul statistics could be retrieved, the number of bonds (or angles) that are observed in the model and the number of bonds (or angles) that are defined in the Chemical Component Dictionary. The Link column lists molecule types, if any, to which the group is linked. The Z score for a bond length (or angle) is the number of standard deviations the observed value is removed from the expected value. A bond length (or angle) with $|Z| > 2$ is considered an outlier worth inspection. RMSZ is the root-mean-square of all Z scores of the bond lengths (or angles).

Mol	Type	Chain	Res	Link	Bond lengths			Bond angles		
					Counts	RMSZ	# $ Z > 2$	Counts	RMSZ	# $ Z > 2$
6	NAG	A	702	1	14,14,15	0.32	0	17,19,21	0.47	0
6	NAG	B	705	1	14,14,15	1.47	2 (14%)	17,19,21	1.79	2 (11%)

In the following table, the Chirals column lists the number of chiral outliers, the number of chiral centers analysed, the number of these observed in the model and the number defined in the Chemical Component Dictionary. Similar counts are reported in the Torsion and Rings columns. '-' means no outliers of that kind were identified.

Mol	Type	Chain	Res	Link	Chirals	Torsions	Rings
6	NAG	A	702	1	-	4/6/23/26	0/1/1/1
6	NAG	B	705	1	-	2/6/23/26	0/1/1/1

All (2) bond length outliers are listed below:

Mol	Chain	Res	Type	Atoms	Z	Observed(Å)	Ideal(Å)
6	B	705	NAG	O5-C1	4.42	1.50	1.43
6	B	705	NAG	C1-C2	2.26	1.55	1.52

All (2) bond angle outliers are listed below:

Mol	Chain	Res	Type	Atoms	Z	Observed(°)	Ideal(°)
6	B	705	NAG	C1-O5-C5	5.66	119.86	112.19
6	B	705	NAG	O5-C1-C2	-3.96	105.03	111.29

There are no chirality outliers.

5 of 6 torsion outliers are listed below:

Mol	Chain	Res	Type	Atoms
6	A	702	NAG	O5-C5-C6-O6
6	A	702	NAG	C4-C5-C6-O6
6	B	705	NAG	O5-C5-C6-O6
6	A	702	NAG	C8-C7-N2-C2
6	A	702	NAG	O7-C7-N2-C2

There are no ring outliers.

No monomer is involved in short contacts.

5.7 Other polymers [i](#)

There are no such residues in this entry.

5.8 Polymer linkage issues [i](#)

There are no chain breaks in this entry.

6 Fit of model and data [i](#)

6.1 Protein, DNA and RNA chains [i](#)

In the following table, the column labelled ‘#RSRZ> 2’ contains the number (and percentage) of RSRZ outliers, followed by percent RSRZ outliers for the chain as percentile scores relative to all X-ray entries and entries of similar resolution. The OWAB column contains the minimum, median, 95th percentile and maximum values of the occupancy-weighted average B-factor per residue. The column labelled ‘Q< 0.9’ lists the number of (and percentage) of residues with an average occupancy less than 0.9.

Mol	Chain	Analysed	<RSRZ>	#RSRZ>2	OWAB(Å ²)	Q<0.9
1	A	550/578 (95%)	0.51	47 (8%) 10 8	39, 69, 137, 197	0
1	B	544/578 (94%)	0.25	14 (2%) 56 52	41, 64, 116, 170	0
All	All	1094/1156 (94%)	0.38	61 (5%) 24 20	39, 67, 131, 197	0

The worst 5 of 61 RSRZ outliers are listed below:

Mol	Chain	Res	Type	RSRZ
1	A	592	PRO	7.3
1	A	287	MET	4.9
1	A	280	SER	4.5
1	A	105	THR	4.4
1	A	106	ASP	4.3

6.2 Non-standard residues in protein, DNA, RNA chains [i](#)

There are no non-standard protein/DNA/RNA residues in this entry.

6.3 Carbohydrates [i](#)

In the following table, the Atoms column lists the number of modelled atoms in the group and the number defined in the chemical component dictionary. The B-factors column lists the minimum, median, 95th percentile and maximum values of B factors of atoms in the group. The column labelled ‘Q< 0.9’ lists the number of atoms with occupancy less than 0.9.

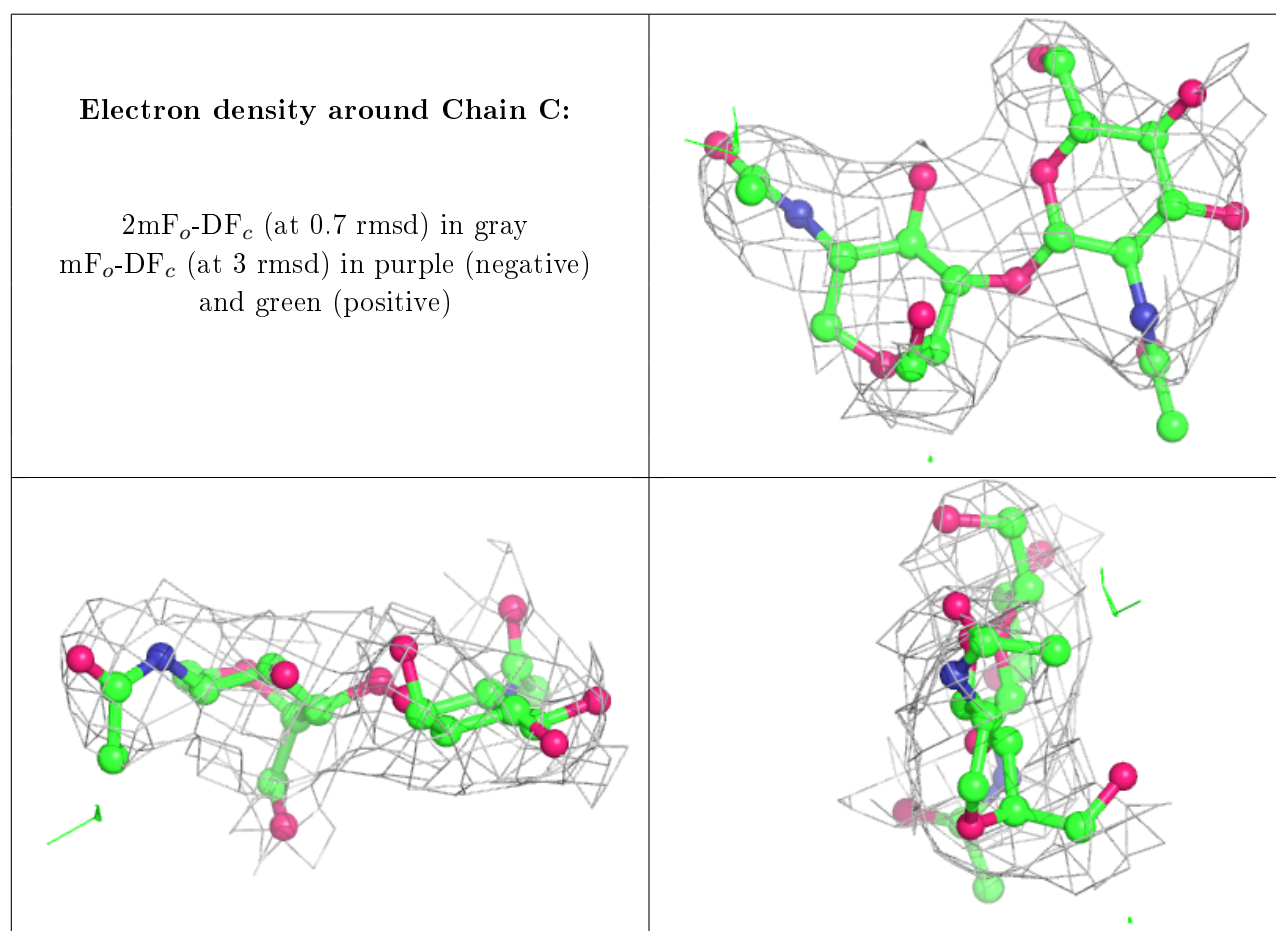
Mol	Type	Chain	Res	Atoms	RSCC	RSR	B-factors(Å ²)	Q<0.9
3	BMA	D	3	11/12	0.67	0.32	155,156,159,160	0
3	NAG	D	2	14/15	0.70	0.27	153,155,166,169	0
3	BMA	F	3	11/12	0.73	0.18	121,129,147,152	0
4	MAN	E	4	11/12	0.74	0.33	100,110,119,127	0
3	NAG	F	2	14/15	0.80	0.19	105,113,121,125	0

Continued on next page...

Continued from previous page...

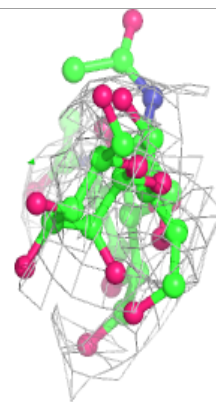
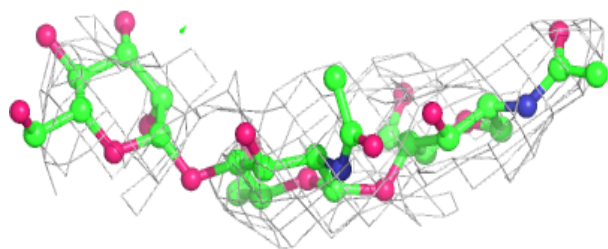
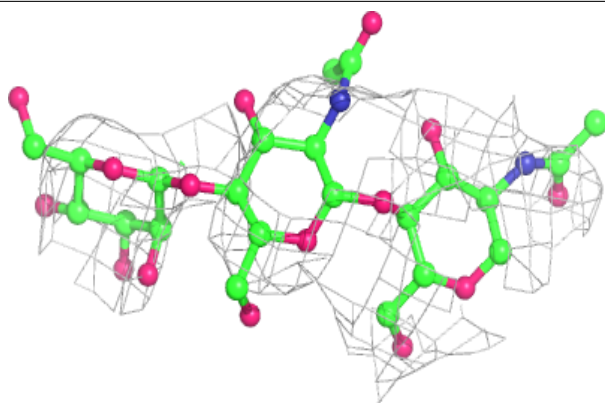
Mol	Type	Chain	Res	Atoms	RSCC	RSR	B-factors(\AA^2)	Q<0.9
4	BMA	E	3	11/12	0.81	0.21	105,107,115,117	0
3	NAG	D	1	14/15	0.86	0.19	70,99,122,134	0
2	NAG	C	2	14/15	0.87	0.26	89,97,101,102	0
4	NAG	E	2	14/15	0.88	0.19	71,94,103,105	0
2	NAG	C	1	14/15	0.91	0.19	64,77,94,99	0
3	NAG	F	1	14/15	0.92	0.22	61,74,94,98	0
4	NAG	E	1	14/15	0.94	0.18	43,48,57,63	0

The following is a graphical depiction of the model fit to experimental electron density for oligosaccharide. Each fit is shown from different orientation to approximate a three-dimensional view.

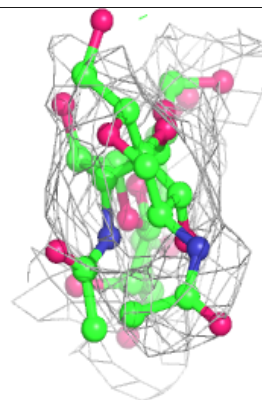
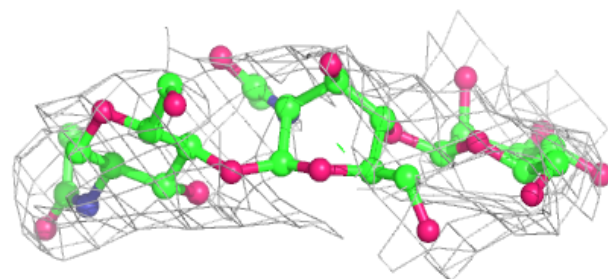
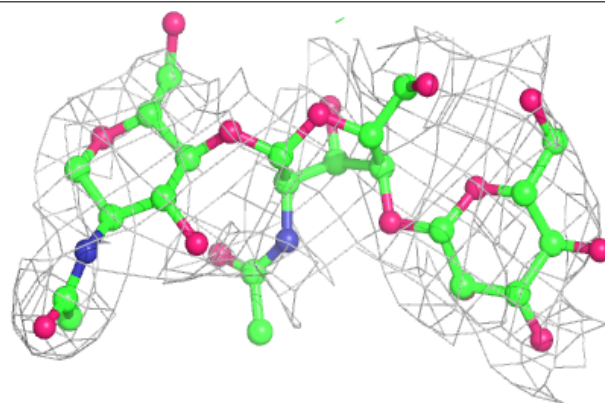


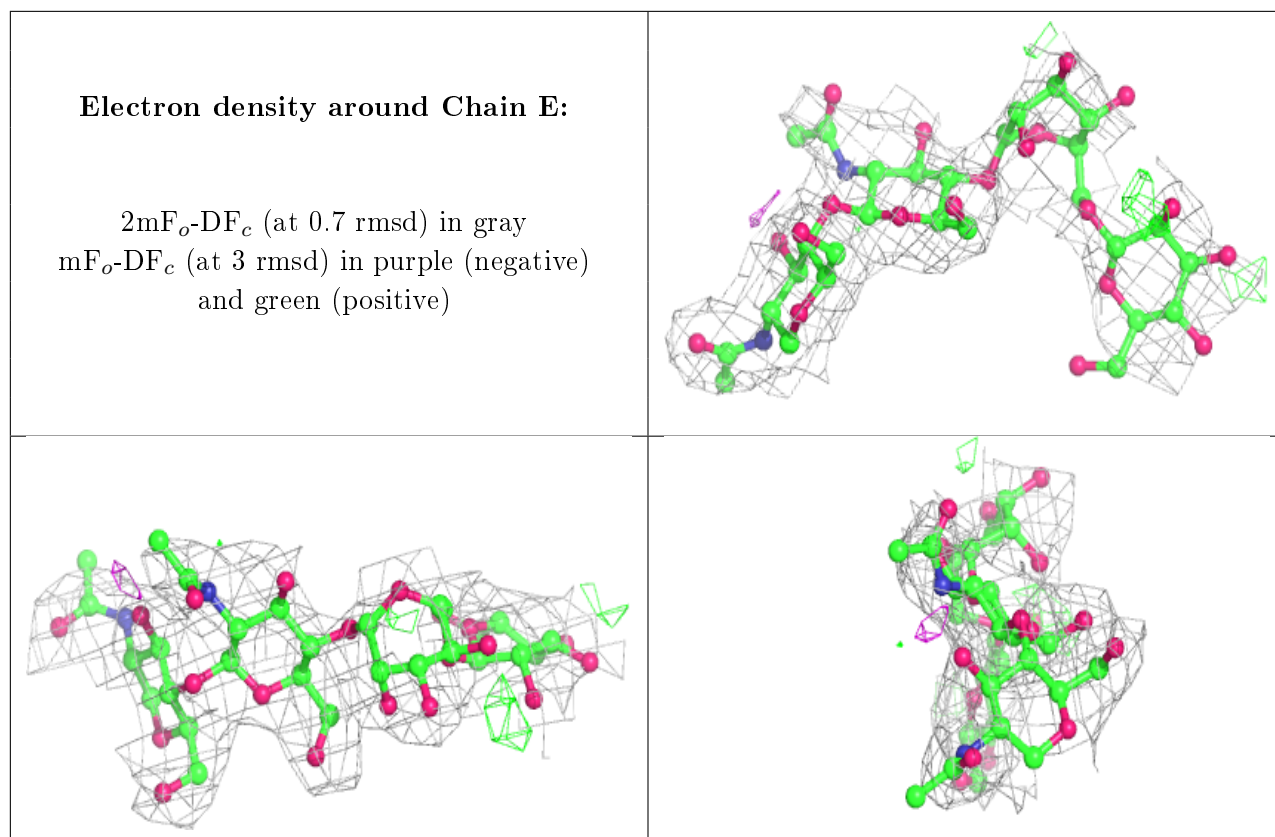
Electron density around Chain D:

$2mF_o-DF_c$ (at 0.7 rmsd) in gray
 mF_o-DF_c (at 3 rmsd) in purple (negative)
and green (positive)

**Electron density around Chain F:**

$2mF_o-DF_c$ (at 0.7 rmsd) in gray
 mF_o-DF_c (at 3 rmsd) in purple (negative)
and green (positive)





6.4 Ligands [i](#)

In the following table, the Atoms column lists the number of modelled atoms in the group and the number defined in the chemical component dictionary. The B-factors column lists the minimum, median, 95th percentile and maximum values of B factors of atoms in the group. The column labelled 'Q< 0.9' lists the number of atoms with occupancy less than 0.9.

Mol	Type	Chain	Res	Atoms	RSCC	RSR	B-factors(Å ²)	Q<0.9
6	NAG	B	705	14/15	0.81	0.28	79,91,103,104	0
6	NAG	A	702	14/15	0.89	0.19	69,78,83,90	0
5	CU	A	701	1/1	0.92	0.09	151,151,151,151	0

6.5 Other polymers [i](#)

There are no such residues in this entry.