



# Full wwPDB X-ray Structure Validation Report ⓘ

Dec 16, 2023 – 03:39 pm GMT

PDB ID : 2XMN  
Title : High resolution snapshots of defined TolC open states present an iris- like movement of periplasmic entrance helices  
Authors : Pei, X.Y.; Koronakis, E.; Hughes, C.; Koronakis, V.  
Deposited on : 2010-07-28  
Resolution : 2.85 Å(reported)

This is a Full wwPDB X-ray Structure Validation Report for a publicly released PDB entry.

We welcome your comments at [validation@mail.wwpdb.org](mailto:validation@mail.wwpdb.org)

A user guide is available at

<https://www.wwpdb.org/validation/2017/XrayValidationReportHelp>

with specific help available everywhere you see the ⓘ symbol.

The types of validation reports are described at

<http://www.wwpdb.org/validation/2017/FAQs#types>.

---

The following versions of software and data (see [references ⓘ](#)) were used in the production of this report:

MolProbity : 4.02b-467  
Mogul : 1.8.4, CSD as541be (2020)  
Xtriage (Phenix) : 1.13  
EDS : 2.36  
buster-report : 1.1.7 (2018)  
Percentile statistics : 20191225.v01 (using entries in the PDB archive December 25th 2019)  
Refmac : 5.8.0158  
CCP4 : 7.0.044 (Gargrove)  
Ideal geometry (proteins) : Engh & Huber (2001)  
Ideal geometry (DNA, RNA) : Parkinson et al. (1996)  
Validation Pipeline (wwPDB-VP) : 2.36

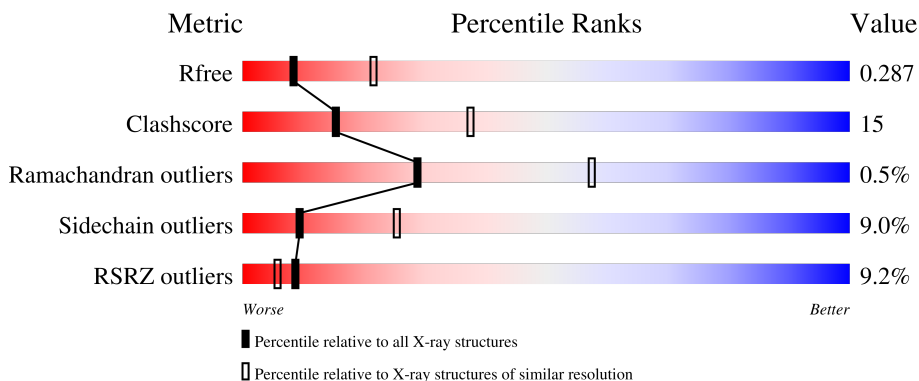
# 1 Overall quality at a glance

The following experimental techniques were used to determine the structure:

*X-RAY DIFFRACTION*


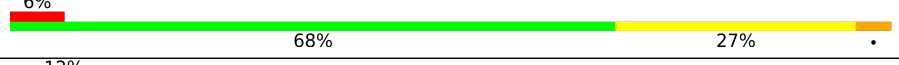
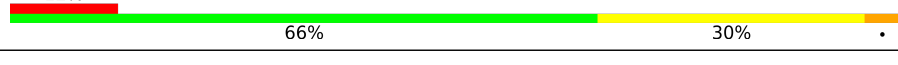
The reported resolution of this entry is 2.85 Å.

Percentile scores (ranging between 0-100) for global validation metrics of the entry are shown in the following graphic. The table shows the number of entries on which the scores are based.



Metric	Whole archive (#Entries)	Similar resolution (#Entries, resolution range(Å))
$R_{free}$	130704	3168 (2.90-2.82)
Clashscore	141614	3438 (2.90-2.82)
Ramachandran outliers	138981	3348 (2.90-2.82)
Sidechain outliers	138945	3351 (2.90-2.82)
RSRZ outliers	127900	3103 (2.90-2.82)

The table below summarises the geometric issues observed across the polymeric chains and their fit to the electron density. The red, orange, yellow and green segments of the lower bar indicate the fraction of residues that contain outliers for  $\geq 3$ , 2, 1 and 0 types of geometric quality criteria respectively. A grey segment represents the fraction of residues that are not modelled. The numeric value for each fraction is indicated below the corresponding segment, with a dot representing fractions  $\leq 5\%$ . The upper red bar (where present) indicates the fraction of residues that have poor fit to the electron density. The numeric value is given above the bar.

Mol	Chain	Length	Quality of chain
1	A	428	 9% 66% 30% .
1	B	428	 6% 68% 27% .
1	C	428	 12% 66% 30% .

## 2 Entry composition

There are 4 unique types of molecules in this entry. The entry contains 9944 atoms, of which 0 are hydrogens and 0 are deuteriums.

In the tables below, the ZeroOcc column contains the number of atoms modelled with zero occupancy, the AltConf column contains the number of residues with at least one atom in alternate conformation and the Trace column contains the number of residues modelled with at most 2 atoms.

- Molecule 1 is a protein called Outer membrane protein TolC.

Mol	Chain	Residues	Atoms					ZeroOcc	AltConf	Trace
			Total	C	N	O	S			
1	A	428	Total 3290	C 2028	N 580	O 677	S 5	0	0	0
1	B	428	Total 3296	C 2032	N 582	O 677	S 5	0	0	0
1	C	428	Total 3300	C 2035	N 583	O 677	S 5	0	0	0

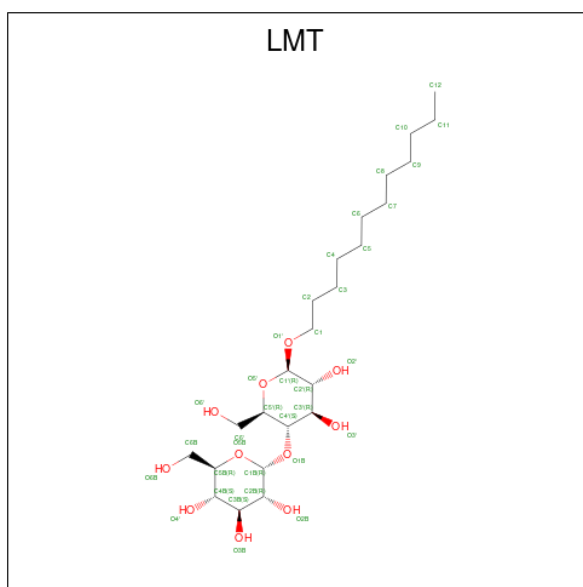
There are 9 discrepancies between the modelled and reference sequences:

Chain	Residue	Modelled	Actual	Comment	Reference
A	169	LEU	VAL	conflict	UNP P02930
A	362	PHE	TYR	engineered mutation	UNP P02930
A	367	SER	ARG	engineered mutation	UNP P02930
B	169	LEU	VAL	conflict	UNP P02930
B	362	PHE	TYR	engineered mutation	UNP P02930
B	367	SER	ARG	engineered mutation	UNP P02930
C	169	LEU	VAL	conflict	UNP P02930
C	362	PHE	TYR	engineered mutation	UNP P02930
C	367	SER	ARG	engineered mutation	UNP P02930

- Molecule 2 is CHLORIDE ION (three-letter code: CL) (formula: Cl).

Mol	Chain	Residues	Atoms		ZeroOcc	AltConf
2	A	1	Total 1	Cl 1	0	0
2	B	1	Total 1	Cl 1	0	0
2	C	1	Total 1	Cl 1	0	0

- Molecule 3 is DODECYL-BETA-D-MALTOSE (three-letter code: LMT) (formula: C<sub>24</sub>H<sub>46</sub>O<sub>11</sub>).



Mol	Chain	Residues	Atoms		ZeroOcc	AltConf
3	B	1	Total	C O	0	0
			35	24 11		

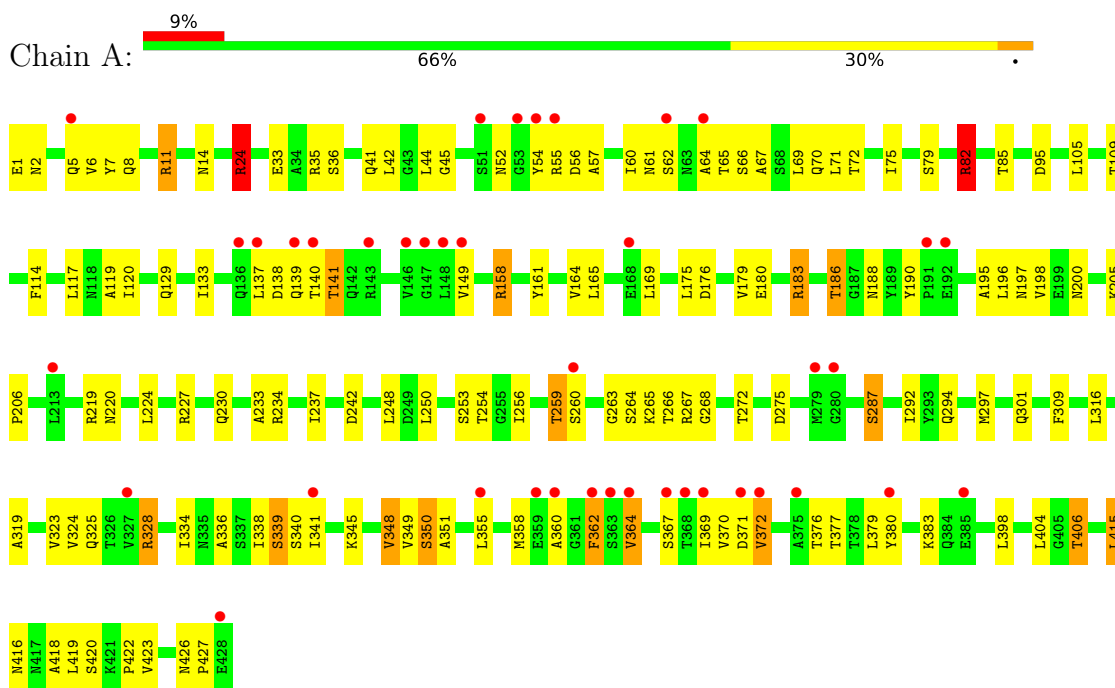
- Molecule 4 is water.

Mol	Chain	Residues	Atoms		ZeroOcc	AltConf
4	A	9	Total	O	0	0
			9	9		
4	B	8	Total	O	0	0
			8	8		
4	C	3	Total	O	0	0
			3	3		

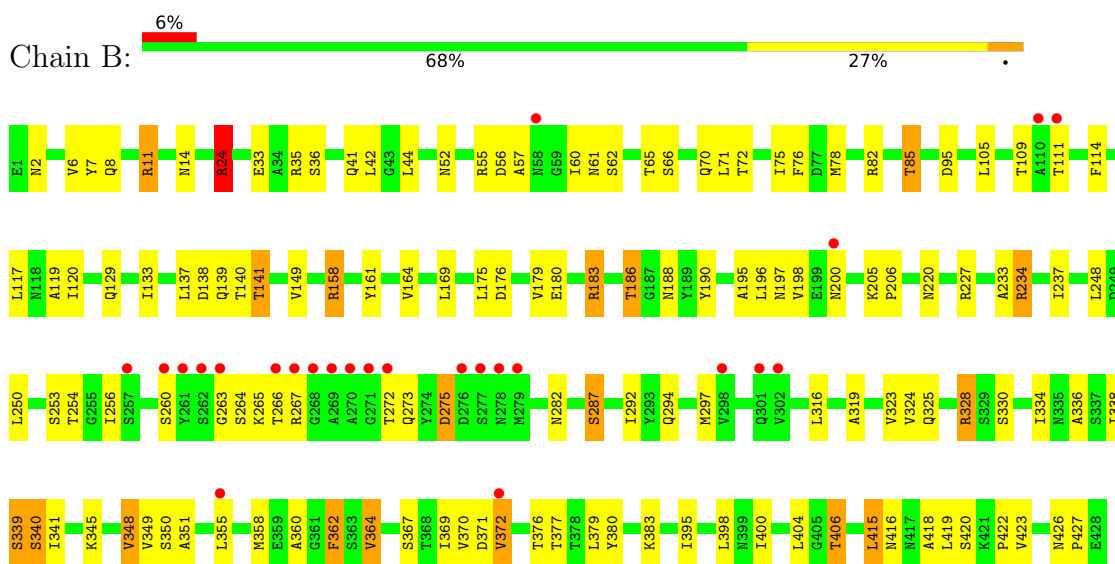
### 3 Residue-property plots i

These plots are drawn for all protein, RNA, DNA and oligosaccharide chains in the entry. The first graphic for a chain summarises the proportions of the various outlier classes displayed in the second graphic. The second graphic shows the sequence view annotated by issues in geometry and electron density. Residues are color-coded according to the number of geometric quality criteria for which they contain at least one outlier: green = 0, yellow = 1, orange = 2 and red = 3 or more. A red dot above a residue indicates a poor fit to the electron density ( $RSRZ > 2$ ). Stretches of 2 or more consecutive residues without any outlier are shown as a green connector. Residues present in the sample, but not in the model, are shown in grey.

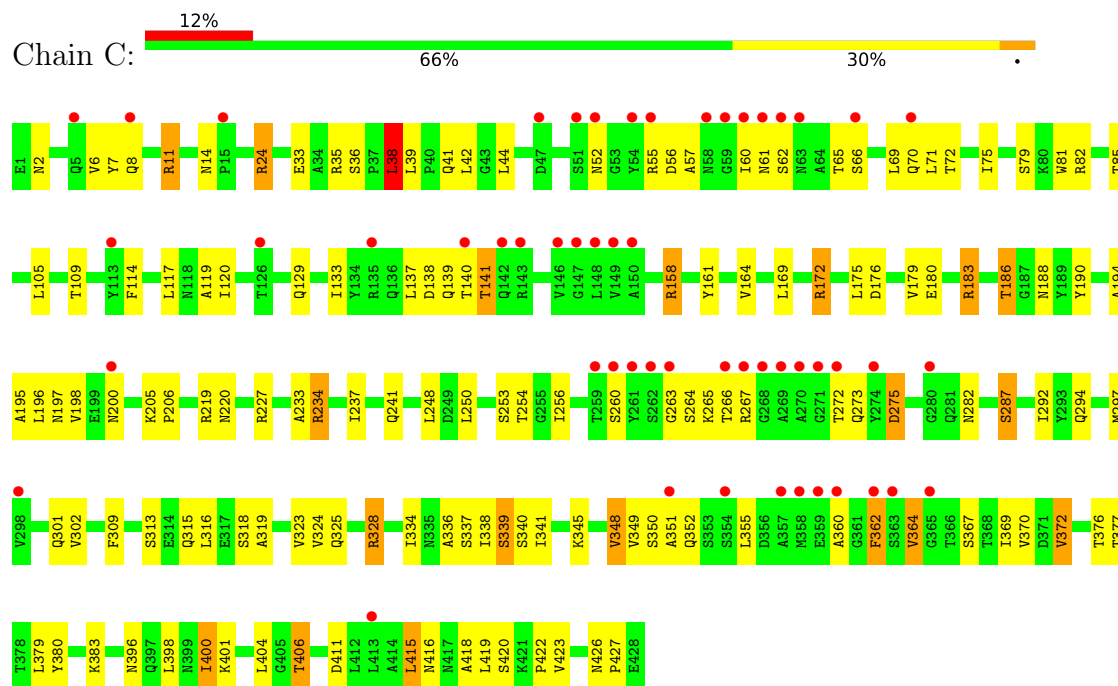
- Molecule 1: Outer membrane protein TolC



- Molecule 1: Outer membrane protein TolC



- Molecule 1: Outer membrane protein TolC



## 4 Data and refinement statistics

Property	Value	Source
Space group	P 21 21 21	Depositor
Cell constants a, b, c, $\alpha$ , $\beta$ , $\gamma$	134.12Å 135.52Å 136.34Å 90.00° 90.00° 90.00°	Depositor
Resolution (Å)	16.94 – 2.85 29.37 – 2.85	Depositor EDS
% Data completeness (in resolution range)	93.4 (16.94-2.85) 93.6 (29.37-2.85)	Depositor EDS
$R_{merge}$	0.10	Depositor
$R_{sym}$	(Not available)	Depositor
$\langle I/\sigma(I) \rangle$ <sup>1</sup>	3.85 (at 2.85Å)	Xtriage
Refinement program	PHENIX (PHENIX.REFINE)	Depositor
R, $R_{free}$	0.271 , 0.309 0.280 , 0.287	Depositor DCC
$R_{free}$ test set	2709 reflections (4.94%)	wwPDB-VP
Wilson B-factor (Å <sup>2</sup> )	52.7	Xtriage
Anisotropy	1.143	Xtriage
Bulk solvent $k_{sol}$ (e/Å <sup>3</sup> ), $B_{sol}$ (Å <sup>2</sup> )	0.31 , 61.6	EDS
L-test for twinning <sup>2</sup>	$\langle  L  \rangle = 0.47$ , $\langle L^2 \rangle = 0.30$	Xtriage
Estimated twinning fraction	0.010 for -h,l,k 0.000 for -l,-k,-h 0.000 for k,h,-l 0.000 for k,l,h 0.000 for l,h,k	Xtriage
$F_o, F_c$ correlation	0.91	EDS
Total number of atoms	9944	wwPDB-VP
Average B, all atoms (Å <sup>2</sup> )	100.0	wwPDB-VP

Xtriage's analysis on translational NCS is as follows: *The largest off-origin peak in the Patterson function is 7.72% of the height of the origin peak. No significant pseudotranslation is detected.*

<sup>1</sup>Intensities estimated from amplitudes.

<sup>2</sup>Theoretical values of  $\langle |L| \rangle$ ,  $\langle L^2 \rangle$  for acentric reflections are 0.5, 0.333 respectively for untwinned datasets, and 0.375, 0.2 for perfectly twinned datasets.

## 5 Model quality i

### 5.1 Standard geometry i

Bond lengths and bond angles in the following residue types are not validated in this section: CL, LMT

The Z score for a bond length (or angle) is the number of standard deviations the observed value is removed from the expected value. A bond length (or angle) with  $|Z| > 5$  is considered an outlier worth inspection. RMSZ is the root-mean-square of all Z scores of the bond lengths (or angles).

Mol	Chain	Bond lengths		Bond angles	
		RMSZ	# Z  >5	RMSZ	# Z  >5
1	A	0.43	0/3331	0.97	20/4525 (0.4%)
1	B	0.54	0/3337	0.77	17/4533 (0.4%)
1	C	0.47	0/3341	0.97	20/4537 (0.4%)
All	All	0.48	0/10009	0.91	57/13595 (0.4%)

There are no bond length outliers.

All (57) bond angle outliers are listed below:

Mol	Chain	Res	Type	Atoms	Z	Observed(°)	Ideal(°)
1	A	328	ARG	NE-CZ-NH1	-17.69	111.46	120.30
1	C	24	ARG	NE-CZ-NH1	-17.20	111.70	120.30
1	A	234	ARG	NE-CZ-NH2	17.05	128.83	120.30
1	A	234	ARG	NE-CZ-NH1	-16.70	111.95	120.30
1	C	24	ARG	NE-CZ-NH2	16.25	128.43	120.30
1	C	267	ARG	NE-CZ-NH1	-16.06	112.27	120.30
1	A	328	ARG	NE-CZ-NH2	15.97	128.29	120.30
1	A	11	ARG	NE-CZ-NH1	-15.84	112.38	120.30
1	C	35	ARG	NE-CZ-NH2	-15.75	112.42	120.30
1	C	267	ARG	NE-CZ-NH2	15.45	128.02	120.30
1	A	11	ARG	NE-CZ-NH2	15.32	127.96	120.30
1	C	158	ARG	NE-CZ-NH1	-14.90	112.85	120.30
1	C	158	ARG	NE-CZ-NH2	14.63	127.61	120.30
1	C	35	ARG	NE-CZ-NH1	14.24	127.42	120.30
1	A	82	ARG	NE-CZ-NH1	-13.92	113.34	120.30
1	A	82	ARG	NE-CZ-NH2	12.96	126.78	120.30
1	B	328	ARG	NE-CZ-NH2	-10.06	115.27	120.30
1	A	24	ARG	NE-CZ-NH2	-9.76	115.42	120.30
1	B	267	ARG	NE-CZ-NH2	-8.98	115.81	120.30
1	A	35	ARG	NE-CZ-NH1	-8.97	115.81	120.30
1	A	234	ARG	CD-NE-CZ	8.81	135.93	123.60

*Continued on next page...*



*Continued from previous page...*

Mol	Chain	Res	Type	Atoms	Z	Observed(°)	Ideal(°)
1	C	328	ARG	NE-CZ-NH2	-8.67	115.96	120.30
1	A	35	ARG	NE-CZ-NH2	8.48	124.54	120.30
1	A	267	ARG	NE-CZ-NH2	-8.46	116.07	120.30
1	B	234	ARG	NE-CZ-NH2	-8.42	116.09	120.30
1	C	24	ARG	CD-NE-CZ	8.24	135.14	123.60
1	B	35	ARG	NE-CZ-NH1	-8.21	116.19	120.30
1	A	267	ARG	NE-CZ-NH1	8.12	124.36	120.30
1	B	158	ARG	NE-CZ-NH2	-8.04	116.28	120.30
1	C	267	ARG	CD-NE-CZ	7.94	134.71	123.60
1	A	158	ARG	NE-CZ-NH2	-7.90	116.35	120.30
1	B	234	ARG	NE-CZ-NH1	7.76	124.18	120.30
1	C	11	ARG	NE-CZ-NH2	-7.71	116.45	120.30
1	C	234	ARG	NE-CZ-NH2	-7.70	116.45	120.30
1	B	158	ARG	NE-CZ-NH1	7.68	124.14	120.30
1	B	24	ARG	NE-CZ-NH2	-7.58	116.51	120.30
1	A	11	ARG	CD-NE-CZ	7.56	134.18	123.60
1	B	82	ARG	NE-CZ-NH2	-7.55	116.53	120.30
1	A	328	ARG	CD-NE-CZ	7.53	134.14	123.60
1	B	35	ARG	NE-CZ-NH2	7.49	124.04	120.30
1	A	24	ARG	NE-CZ-NH1	7.44	124.02	120.30
1	B	11	ARG	NE-CZ-NH2	-7.42	116.59	120.30
1	B	11	ARG	NE-CZ-NH1	7.40	124.00	120.30
1	C	158	ARG	CD-NE-CZ	7.32	133.85	123.60
1	A	158	ARG	NE-CZ-NH1	7.28	123.94	120.30
1	C	234	ARG	NE-CZ-NH1	7.26	123.93	120.30
1	C	82	ARG	NE-CZ-NH2	-7.19	116.70	120.30
1	C	11	ARG	NE-CZ-NH1	7.09	123.84	120.30
1	C	35	ARG	CD-NE-CZ	6.85	133.19	123.60
1	B	82	ARG	NE-CZ-NH1	6.69	123.65	120.30
1	C	328	ARG	NE-CZ-NH1	6.66	123.63	120.30
1	B	24	ARG	NE-CZ-NH1	6.33	123.47	120.30
1	B	328	ARG	NE-CZ-NH1	6.01	123.30	120.30
1	B	267	ARG	NE-CZ-NH1	5.72	123.16	120.30
1	A	82	ARG	CD-NE-CZ	5.54	131.36	123.60
1	C	38	LEU	CB-CG-CD1	5.21	119.86	111.00
1	B	234	ARG	CD-NE-CZ	5.21	130.89	123.60

There are no chirality outliers.

There are no planarity outliers.

## 5.2 Too-close contacts

In the following table, the Non-H and H(model) columns list the number of non-hydrogen atoms and hydrogen atoms in the chain respectively. The H(added) column lists the number of hydrogen atoms added and optimized by MolProbity. The Clashes column lists the number of clashes within the asymmetric unit, whereas Symm-Clashes lists symmetry-related clashes.

Mol	Chain	Non-H	H(model)	H(added)	Clashes	Symm-Clashes
1	A	3290	0	3223	109	0
1	B	3296	0	3237	106	0
1	C	3300	0	3248	107	0
2	A	1	0	0	0	0
2	B	1	0	0	0	0
2	C	1	0	0	0	0
3	B	35	0	44	4	0
4	A	9	0	0	1	0
4	B	8	0	0	0	0
4	C	3	0	0	0	0
All	All	9944	0	9752	294	0

The all-atom clashscore is defined as the number of clashes found per 1000 atoms (including hydrogen atoms). The all-atom clashscore for this structure is 15.

All (294) close contacts within the same asymmetric unit are listed below, sorted by their clash magnitude.

Atom-1	Atom-2	Interatomic distance (Å)	Clash overlap (Å)
1:B:183:ARG:HG3	1:B:183:ARG:HH11	1.30	0.95
1:C:183:ARG:HG3	1:C:183:ARG:HH11	1.37	0.89
1:A:183:ARG:HG3	1:A:183:ARG:HH11	1.36	0.88
1:B:183:ARG:HH11	1:B:183:ARG:CG	1.93	0.82
1:A:2:ASN:HD22	1:A:416:ASN:HD21	1.29	0.79
1:C:2:ASN:HD22	1:C:416:ASN:HD21	1.30	0.76
1:C:183:ARG:HH11	1:C:183:ARG:CG	1.99	0.75
1:A:183:ARG:HH11	1:A:183:ARG:CG	1.99	0.75
1:C:205:LYS:HG2	1:C:206:PRO:HD2	1.70	0.74
1:A:319:ALA:O	1:A:323:VAL:HG23	1.87	0.74
1:A:169:LEU:HD11	1:B:339:SER:OG	1.87	0.74
1:A:2:ASN:ND2	1:A:416:ASN:HD21	1.86	0.73
1:B:319:ALA:O	1:B:323:VAL:HG23	1.88	0.73
1:C:254:THR:HG23	1:C:254:THR:O	1.89	0.73
1:C:319:ALA:O	1:C:323:VAL:HG23	1.88	0.72
1:B:2:ASN:ND2	1:B:416:ASN:HD21	1.87	0.72
1:B:2:ASN:HD22	1:B:416:ASN:HD21	1.35	0.72

*Continued on next page...*

*Continued from previous page...*

Atom-1	Atom-2	Interatomic distance (Å)	Clash overlap (Å)
1:C:2:ASN:ND2	1:C:416:ASN:HD21	1.87	0.71
1:A:292:ILE:HB	1:C:42:LEU:O	1.90	0.70
1:B:254:THR:HG23	1:B:254:THR:O	1.92	0.69
1:B:2:ASN:O	1:B:6:VAL:HG23	1.92	0.69
1:A:254:THR:O	1:A:254:THR:HG23	1.93	0.68
1:A:339:SER:OG	1:C:169:LEU:HD11	1.94	0.67
1:B:169:LEU:HD11	1:C:339:SER:OG	1.94	0.67
1:A:294:GLN:HG2	1:C:41:GLN:NE2	2.11	0.66
1:C:55:ARG:C	1:C:57:ALA:H	1.99	0.66
1:A:41:GLN:NE2	1:B:294:GLN:HG2	2.10	0.66
3:B:1429:LMT:O6'	3:B:1429:LMT:O5B	2.16	0.64
1:A:186:THR:HG23	1:A:188:ASN:H	1.63	0.64
1:A:2:ASN:HB2	1:A:416:ASN:OD1	1.97	0.63
1:A:2:ASN:O	1:A:6:VAL:HG23	1.99	0.63
1:B:41:GLN:NE2	1:C:294:GLN:HG2	2.14	0.63
1:B:220:ASN:ND2	1:B:323:VAL:HG22	2.14	0.62
1:C:117:LEU:HD13	1:C:195:ALA:HA	1.82	0.62
1:B:117:LEU:HD13	1:B:195:ALA:HA	1.82	0.62
1:A:220:ASN:ND2	1:A:323:VAL:HG22	2.15	0.62
1:A:380:TYR:HA	1:A:383:LYS:HB2	1.82	0.62
1:A:328:ARG:HD2	1:C:180:GLU:OE2	2.00	0.61
1:A:197:ASN:ND2	1:A:200:ASN:HB2	2.16	0.61
1:B:169:LEU:HD11	1:C:339:SER:CB	2.29	0.61
1:B:186:THR:HG23	1:B:188:ASN:H	1.66	0.61
1:B:119:ALA:HB1	1:B:175:LEU:HA	1.82	0.61
1:C:334:ILE:O	1:C:338:ILE:HG13	2.01	0.61
1:C:2:ASN:O	1:C:6:VAL:HG23	2.00	0.60
1:B:75:ILE:HD12	1:B:250:LEU:HB2	1.83	0.60
1:C:205:LYS:CG	1:C:206:PRO:HD2	2.31	0.60
1:B:137:LEU:HA	1:B:140:THR:HG22	1.83	0.60
1:C:2:ASN:HB2	1:C:416:ASN:OD1	2.02	0.60
1:A:44:LEU:HB2	1:B:292:ILE:HD11	1.84	0.59
1:A:205:LYS:HG2	1:A:206:PRO:HD2	1.84	0.59
1:B:55:ARG:C	1:B:57:ALA:H	2.04	0.59
1:C:172:ARG:HB2	1:C:172:ARG:CZ	2.32	0.59
1:A:369:ILE:O	1:A:372:VAL:HG12	2.02	0.59
1:C:197:ASN:ND2	1:C:200:ASN:HB2	2.17	0.59
1:C:55:ARG:O	1:C:57:ALA:N	2.35	0.59
1:A:55:ARG:C	1:A:57:ALA:H	2.06	0.59
1:C:220:ASN:ND2	1:C:323:VAL:HG22	2.18	0.59
1:A:75:ILE:HD12	1:A:250:LEU:HB2	1.84	0.59

*Continued on next page...*

*Continued from previous page...*

Atom-1	Atom-2	Interatomic distance (Å)	Clash overlap (Å)
1:B:205:LYS:HG2	1:B:206:PRO:HD2	1.84	0.59
1:C:137:LEU:HA	1:C:140:THR:HG22	1.85	0.59
1:B:120:ILE:HG21	1:B:423:VAL:HG11	1.85	0.58
1:B:369:ILE:O	1:B:372:VAL:HG12	2.03	0.58
1:B:334:ILE:O	1:B:338:ILE:HG13	2.03	0.58
1:C:369:ILE:O	1:C:372:VAL:HG12	2.03	0.58
1:A:120:ILE:HG21	1:A:423:VAL:HG11	1.85	0.58
3:B:1429:LMT:O6'	3:B:1429:LMT:O6B	2.21	0.58
1:B:140:THR:HB	1:B:369:ILE:HD12	1.86	0.58
1:C:120:ILE:HG21	1:C:423:VAL:HG11	1.84	0.58
1:C:75:ILE:HD12	1:C:250:LEU:HB2	1.84	0.58
1:A:140:THR:HB	1:A:369:ILE:HD12	1.86	0.58
1:A:292:ILE:HD11	1:C:44:LEU:HB2	1.86	0.58
1:C:341:ILE:O	1:C:345:LYS:HB2	2.04	0.57
1:B:24:ARG:HD3	1:B:95:ASP:OD1	2.04	0.57
1:B:180:GLU:OE1	1:B:180:GLU:HA	2.03	0.57
1:C:380:TYR:HA	1:C:383:LYS:HB2	1.87	0.57
1:A:169:LEU:HD11	1:B:339:SER:CB	2.35	0.57
1:A:334:ILE:O	1:A:338:ILE:HG13	2.03	0.57
1:B:114:PHE:HZ	1:B:415:LEU:CD2	2.18	0.57
1:B:220:ASN:HD22	1:B:323:VAL:HG22	1.70	0.57
1:B:380:TYR:HA	1:B:383:LYS:HB2	1.86	0.56
1:C:404:LEU:HB3	1:C:406:THR:HG23	1.86	0.56
1:B:2:ASN:HB2	1:B:416:ASN:OD1	2.05	0.56
1:B:186:THR:CG2	1:B:188:ASN:H	2.18	0.56
1:A:117:LEU:HD13	1:A:195:ALA:HA	1.87	0.56
1:A:119:ALA:HB1	1:A:175:LEU:HA	1.86	0.56
1:A:137:LEU:HA	1:A:140:THR:HG22	1.88	0.56
1:B:169:LEU:HD21	1:C:339:SER:HB3	1.87	0.56
1:B:404:LEU:HB3	1:B:406:THR:HG23	1.88	0.56
1:C:140:THR:HB	1:C:369:ILE:HD12	1.87	0.55
1:A:186:THR:CG2	1:A:188:ASN:H	2.19	0.55
1:B:85:THR:OG1	3:B:1429:LMT:H6'1	2.06	0.55
1:C:119:ALA:HB1	1:C:175:LEU:HA	1.88	0.55
1:C:180:GLU:HA	1:C:180:GLU:OE1	2.06	0.55
1:B:186:THR:HG21	1:B:190:TYR:HE2	1.71	0.55
1:A:36:SER:OG	1:B:297:MET:HB2	2.07	0.55
1:B:117:LEU:CD1	1:B:195:ALA:HA	2.36	0.55
1:B:197:ASN:ND2	1:B:200:ASN:HB2	2.20	0.55
1:A:24:ARG:HD3	1:A:95:ASP:OD1	2.07	0.55
1:A:114:PHE:HZ	1:A:415:LEU:CD2	2.19	0.55

*Continued on next page...*

*Continued from previous page...*

Atom-1	Atom-2	Interatomic distance (Å)	Clash overlap (Å)
1:A:351:ALA:HB1	1:A:379:LEU:HA	1.89	0.55
1:B:180:GLU:OE2	1:C:328:ARG:HD3	2.07	0.55
1:C:117:LEU:CD1	1:C:195:ALA:HA	2.37	0.55
1:A:227:ARG:HG2	1:A:316:LEU:HD11	1.89	0.55
1:B:330:SER:OG	1:B:400:ILE:HG13	2.06	0.55
1:A:180:GLU:HA	1:A:180:GLU:OE1	2.07	0.54
1:A:297:MET:HB2	1:C:36:SER:OG	2.07	0.54
1:B:36:SER:OG	1:C:297:MET:HB2	2.08	0.54
1:B:227:ARG:HG2	1:B:316:LEU:HD11	1.89	0.54
1:B:355:LEU:HD11	1:B:376:THR:OG1	2.08	0.54
1:C:186:THR:HG23	1:C:188:ASN:H	1.72	0.54
3:B:1429:LMT:H6B	3:B:1429:LMT:H6'	1.55	0.54
1:C:114:PHE:HZ	1:C:415:LEU:CD2	2.21	0.54
1:A:220:ASN:HD22	1:A:323:VAL:CG2	2.21	0.54
1:B:336:ALA:O	1:B:340:SER:HB2	2.07	0.54
1:B:220:ASN:HD22	1:B:323:VAL:CG2	2.21	0.54
1:A:82:ARG:HD2	1:A:242:ASP:OD2	2.08	0.54
1:B:8:GLN:HE21	1:B:11:ARG:HH22	1.54	0.54
1:A:42:LEU:O	1:B:292:ILE:HB	2.08	0.53
1:B:351:ALA:HB1	1:B:379:LEU:HA	1.90	0.53
1:C:172:ARG:HB2	1:C:172:ARG:NH1	2.23	0.53
1:A:404:LEU:HB3	1:A:406:THR:HG23	1.89	0.53
1:A:140:THR:CB	1:A:369:ILE:HD12	2.39	0.53
1:A:341:ILE:O	1:A:345:LYS:HB2	2.07	0.53
1:A:426:ASN:N	1:A:427:PRO:HD3	2.24	0.53
1:A:220:ASN:HD22	1:A:323:VAL:HG22	1.72	0.53
1:C:227:ARG:HG2	1:C:316:LEU:HD11	1.90	0.53
1:A:117:LEU:CD1	1:A:195:ALA:HA	2.39	0.53
1:B:205:LYS:CG	1:B:206:PRO:HD2	2.39	0.52
1:B:341:ILE:O	1:B:345:LYS:HB2	2.09	0.52
1:B:426:ASN:N	1:B:427:PRO:HD3	2.25	0.52
1:C:140:THR:CB	1:C:369:ILE:HD12	2.39	0.52
1:C:75:ILE:CD1	1:C:250:LEU:HB2	2.40	0.52
1:B:140:THR:CB	1:B:369:ILE:HD12	2.39	0.52
1:A:75:ILE:CD1	1:A:250:LEU:HB2	2.39	0.52
1:C:351:ALA:HB1	1:C:379:LEU:HA	1.90	0.52
1:C:8:GLN:HE21	1:C:11:ARG:HH22	1.57	0.52
1:A:328:ARG:CD	1:C:180:GLU:OE2	2.57	0.52
1:B:42:LEU:O	1:C:292:ILE:HB	2.10	0.52
1:B:55:ARG:O	1:B:57:ALA:N	2.43	0.52
1:A:205:LYS:CG	1:A:206:PRO:HD2	2.40	0.52

*Continued on next page...*

*Continued from previous page...*

Atom-1	Atom-2	Interatomic distance (Å)	Clash overlap (Å)
1:A:14:ASN:ND2	1:A:105:LEU:HD13	2.24	0.52
1:B:75:ILE:CD1	1:B:250:LEU:HB2	2.40	0.52
1:C:186:THR:CG2	1:C:188:ASN:H	2.22	0.52
1:A:339:SER:CB	1:C:169:LEU:HD11	2.39	0.51
1:A:66:SER:HA	1:A:256:ILE:O	2.10	0.51
1:C:220:ASN:HD22	1:C:323:VAL:HG22	1.74	0.51
1:C:233:ALA:O	1:C:237:ILE:HG13	2.09	0.51
1:A:180:GLU:OE2	1:B:328:ARG:HD3	2.10	0.51
1:B:358:MET:SD	1:B:371:ASP:HB3	2.51	0.51
1:C:254:THR:O	1:C:254:THR:CG2	2.57	0.51
1:A:129:GLN:O	1:A:133:ILE:HG13	2.10	0.51
1:B:254:THR:O	1:B:254:THR:CG2	2.59	0.51
1:A:254:THR:O	1:A:254:THR:CG2	2.59	0.51
1:A:233:ALA:O	1:A:237:ILE:HG13	2.11	0.50
1:C:220:ASN:HD22	1:C:323:VAL:CG2	2.24	0.50
1:B:176:ASP:O	1:B:179:VAL:HG22	2.11	0.50
1:C:362:PHE:HA	1:C:367:SER:O	2.12	0.50
1:B:60:ILE:C	1:B:61:ASN:HD22	2.14	0.50
1:A:60:ILE:C	1:A:61:ASN:HD22	2.15	0.49
1:A:360:ALA:O	1:A:364:VAL:HG23	2.12	0.49
1:C:183:ARG:HG3	1:C:183:ARG:NH1	2.17	0.49
1:A:186:THR:HG21	1:A:190:TYR:HE2	1.77	0.49
1:A:362:PHE:HA	1:A:367:SER:O	2.13	0.49
1:A:161:TYR:O	1:A:164:VAL:HG12	2.13	0.49
1:C:14:ASN:ND2	1:C:105:LEU:HD13	2.28	0.49
1:C:336:ALA:O	1:C:340:SER:HB2	2.13	0.49
1:C:55:ARG:C	1:C:57:ALA:N	2.64	0.48
1:C:355:LEU:HD11	1:C:376:THR:OG1	2.12	0.48
1:A:355:LEU:HD11	1:A:376:THR:OG1	2.14	0.48
1:C:186:THR:HG21	1:C:190:TYR:HE2	1.78	0.48
1:C:66:SER:HA	1:C:256:ILE:O	2.14	0.48
1:C:315:GLN:O	1:C:318:SER:HB2	2.13	0.48
1:A:44:LEU:HD12	1:A:69:LEU:HD12	1.95	0.48
1:B:169:LEU:HD11	1:C:339:SER:HB3	1.94	0.48
1:B:324:VAL:HG12	1:B:325:GLN:N	2.29	0.48
1:C:60:ILE:C	1:C:61:ASN:HD22	2.16	0.48
1:A:336:ALA:O	1:A:340:SER:HB2	2.14	0.47
1:A:54:TYR:HE2	1:B:282:ASN:OD1	1.96	0.47
1:A:196:LEU:HD12	1:A:418:ALA:O	2.14	0.47
1:C:263:GLY:O	1:C:266:THR:HG22	2.15	0.47
1:B:183:ARG:HG3	1:B:183:ARG:NH1	2.10	0.47

*Continued on next page...*

*Continued from previous page...*

Atom-1	Atom-2	Interatomic distance (Å)	Clash overlap (Å)
1:B:197:ASN:H	1:B:419:LEU:HA	1.79	0.47
1:B:420:SER:O	1:B:422:PRO:HD3	2.14	0.47
1:C:426:ASN:N	1:C:427:PRO:HD3	2.29	0.47
1:C:7:TYR:HA	1:C:109:THR:HG21	1.96	0.47
1:C:420:SER:O	1:C:422:PRO:HD3	2.15	0.47
1:C:197:ASN:H	1:C:419:LEU:HA	1.80	0.47
1:B:55:ARG:C	1:B:57:ALA:N	2.68	0.47
1:A:7:TYR:HA	1:A:109:THR:HG21	1.97	0.46
1:A:141:THR:O	1:A:141:THR:HG23	2.15	0.46
1:B:362:PHE:HA	1:B:367:SER:O	2.14	0.46
1:A:55:ARG:O	1:A:57:ALA:N	2.48	0.46
1:B:196:LEU:HD12	1:B:418:ALA:O	2.15	0.46
1:C:360:ALA:O	1:C:364:VAL:HG23	2.15	0.46
1:A:264:SER:C	1:A:266:THR:H	2.19	0.46
1:B:419:LEU:C	1:B:419:LEU:HD12	2.36	0.46
1:C:141:THR:O	1:C:141:THR:HG23	2.15	0.46
1:A:248:LEU:HD12	1:A:287:SER:O	2.16	0.46
1:B:141:THR:HG23	1:B:141:THR:O	2.14	0.46
1:B:7:TYR:HA	1:B:109:THR:HG21	1.96	0.46
1:B:360:ALA:O	1:B:364:VAL:HG23	2.16	0.46
1:A:263:GLY:O	1:A:266:THR:HG22	2.14	0.46
1:B:370:VAL:HG12	1:B:370:VAL:O	2.15	0.46
1:A:419:LEU:HD12	1:A:419:LEU:O	2.16	0.46
1:B:248:LEU:HD12	1:B:287:SER:O	2.15	0.46
1:A:324:VAL:HG12	1:A:325:GLN:N	2.31	0.45
1:B:129:GLN:O	1:B:133:ILE:HG13	2.16	0.45
1:C:396:ASN:O	1:C:400:ILE:HG12	2.15	0.45
1:A:419:LEU:HD12	1:A:419:LEU:C	2.37	0.45
1:B:263:GLY:O	1:B:266:THR:HG22	2.16	0.45
1:C:161:TYR:O	1:C:164:VAL:HG12	2.16	0.45
1:A:183:ARG:HG3	1:A:183:ARG:NH1	2.15	0.45
1:A:370:VAL:HG12	1:A:370:VAL:O	2.15	0.45
1:B:14:ASN:ND2	1:B:105:LEU:HD13	2.30	0.45
1:C:129:GLN:O	1:C:133:ILE:HG13	2.17	0.45
1:B:161:TYR:O	1:B:164:VAL:HG12	2.17	0.45
1:B:419:LEU:HD12	1:B:419:LEU:O	2.16	0.45
1:A:6:VAL:HG13	1:A:190:TYR:CZ	2.52	0.45
1:A:169:LEU:HD21	1:B:339:SER:HB3	1.97	0.45
1:C:196:LEU:HD12	1:C:418:ALA:O	2.16	0.45
1:B:137:LEU:HA	1:B:140:THR:CG2	2.47	0.44
1:C:401:LYS:HE3	1:C:411:ASP:OD1	2.17	0.44

*Continued on next page...*

*Continued from previous page...*

Atom-1	Atom-2	Interatomic distance (Å)	Clash overlap (Å)
1:A:55:ARG:C	1:A:57:ALA:N	2.70	0.44
1:C:264:SER:C	1:C:266:THR:H	2.19	0.44
1:A:45:GLY:O	1:A:67:ALA:HA	2.17	0.44
1:B:169:LEU:CD2	1:C:339:SER:HB3	2.48	0.44
1:B:233:ALA:O	1:B:237:ILE:HG13	2.18	0.44
1:C:241:GLN:HG3	1:C:302:VAL:HG22	1.99	0.44
1:A:8:GLN:HE21	1:A:11:ARG:HH22	1.66	0.43
1:B:345:LYS:O	1:B:348:VAL:HG12	2.17	0.43
1:A:358:MET:SD	1:A:371:ASP:HB3	2.58	0.43
1:A:237:ILE:HD11	1:A:309:PHE:HB2	1.99	0.43
1:C:44:LEU:HD12	1:C:69:LEU:HD12	2.00	0.43
1:A:52:ASN:C	1:A:52:ASN:OD1	2.57	0.43
1:A:272:THR:HG23	1:A:272:THR:O	2.19	0.43
1:A:197:ASN:H	1:A:419:LEU:HA	1.82	0.43
1:B:139:GLN:OE1	1:B:362:PHE:HE1	2.02	0.43
1:C:297:MET:CE	1:C:301:GLN:HE22	2.32	0.43
1:B:111:THR:HA	1:B:395:ILE:HD11	2.01	0.43
1:A:339:SER:HB3	1:C:169:LEU:HD21	1.99	0.43
1:B:66:SER:HA	1:B:256:ILE:O	2.19	0.43
1:B:273:GLN:C	1:B:275:ASP:H	2.22	0.43
1:C:272:THR:HG23	1:C:272:THR:O	2.19	0.43
1:C:313:SER:O	1:C:316:LEU:HB3	2.19	0.43
1:A:230:GLN:OE1	1:A:316:LEU:HD22	2.19	0.42
1:B:264:SER:C	1:B:266:THR:H	2.22	0.42
1:C:38:LEU:HD21	1:C:81:TRP:CD2	2.54	0.42
1:C:370:VAL:HG12	1:C:370:VAL:O	2.20	0.42
1:A:44:LEU:HB2	1:B:292:ILE:CD1	2.49	0.42
1:B:52:ASN:HB3	1:C:282:ASN:HB2	2.01	0.42
1:B:348:VAL:CG1	1:B:349:VAL:N	2.83	0.42
1:A:348:VAL:CG1	1:A:349:VAL:N	2.82	0.42
1:C:139:GLN:OE1	1:C:362:PHE:HE1	2.03	0.42
1:A:219:ARG:HE	1:A:219:ARG:HB3	1.67	0.42
1:B:44:LEU:HB2	1:C:292:ILE:HD11	2.01	0.42
1:A:297:MET:CE	1:A:301:GLN:HE22	2.33	0.42
1:B:8:GLN:HE21	1:B:11:ARG:NH2	2.17	0.42
1:B:272:THR:O	1:B:272:THR:HG23	2.19	0.42
1:C:176:ASP:O	1:C:179:VAL:HG22	2.20	0.42
1:A:129:GLN:HG2	1:A:164:VAL:HG21	2.02	0.41
1:A:1:GLU:HB3	1:A:5:GLN:HB2	2.03	0.41
1:B:137:LEU:CA	1:B:140:THR:HG22	2.50	0.41
1:A:195:ALA:O	1:A:419:LEU:HB2	2.20	0.41

*Continued on next page...*



Continued from previous page...

Atom-1	Atom-2	Interatomic distance (Å)	Clash overlap (Å)
1:C:348:VAL:CG1	1:C:349:VAL:N	2.83	0.41
1:C:219:ARG:HE	1:C:219:ARG:HB3	1.59	0.41
1:A:250:LEU:C	1:A:250:LEU:HD23	2.41	0.41
1:A:268:GLY:N	4:A:2006:HOH:O	2.53	0.41
1:B:183:ARG:CG	1:B:183:ARG:NH1	2.63	0.41
1:B:195:ALA:O	1:B:419:LEU:HB2	2.20	0.41
1:C:273:GLN:C	1:C:275:ASP:H	2.24	0.41
1:A:161:TYR:CE2	1:A:165:LEU:HD11	2.56	0.41
1:A:169:LEU:CD2	1:B:339:SER:HB3	2.50	0.41
1:A:176:ASP:O	1:A:179:VAL:HG22	2.20	0.41
1:B:250:LEU:HD23	1:B:250:LEU:C	2.40	0.41
1:C:6:VAL:HG13	1:C:190:TYR:CZ	2.56	0.41
1:C:248:LEU:HD12	1:C:287:SER:O	2.21	0.41
1:A:139:GLN:OE1	1:A:362:PHE:HE1	2.04	0.41
1:A:224:LEU:HD12	1:A:224:LEU:O	2.21	0.41
1:C:52:ASN:C	1:C:52:ASN:OD1	2.58	0.41
1:C:297:MET:HE2	1:C:301:GLN:HE22	1.85	0.41
1:A:420:SER:O	1:A:422:PRO:HD3	2.20	0.41
1:C:39:LEU:HD12	1:C:39:LEU:N	2.36	0.41
1:C:237:ILE:HD11	1:C:309:PHE:HB2	2.03	0.41
1:A:165:LEU:HD23	1:A:165:LEU:HA	1.92	0.41
1:B:76:PHE:HE2	1:B:78:MET:CE	2.33	0.41
1:B:105:LEU:HD12	1:B:105:LEU:HA	1.81	0.41
1:C:352:GLN:HA	1:C:379:LEU:HD13	2.02	0.41
1:A:349:VAL:HG12	1:A:350:SER:N	2.36	0.40
1:C:324:VAL:HG12	1:C:325:GLN:N	2.36	0.40
1:C:337:SER:O	1:C:341:ILE:HG13	2.21	0.40
1:B:60:ILE:C	1:B:61:ASN:ND2	2.75	0.40
1:C:205:LYS:HG2	1:C:206:PRO:CD	2.46	0.40
1:A:64:ALA:HB2	1:A:259:THR:HG23	2.04	0.40
1:C:137:LEU:CA	1:C:140:THR:HG22	2.52	0.40

There are no symmetry-related clashes.

## 5.3 Torsion angles

### 5.3.1 Protein backbone

In the following table, the Percentiles column shows the percent Ramachandran outliers of the chain as a percentile score with respect to all X-ray entries followed by that with respect to entries of similar resolution.

The Analysed column shows the number of residues for which the backbone conformation was analysed, and the total number of residues.

Mol	Chain	Analysed	Favoured	Allowed	Outliers	Percentiles	
1	A	426/428 (100%)	390 (92%)	34 (8%)	2 (0%)	29	57
1	B	426/428 (100%)	386 (91%)	38 (9%)	2 (0%)	29	57
1	C	426/428 (100%)	385 (90%)	38 (9%)	3 (1%)	22	50
All	All	1278/1284 (100%)	1161 (91%)	110 (9%)	7 (0%)	29	57

All (7) Ramachandran outliers are listed below:

Mol	Chain	Res	Type
1	A	56	ASP
1	B	56	ASP
1	C	56	ASP
1	A	265	LYS
1	C	265	LYS
1	B	265	LYS
1	C	194	ALA

### 5.3.2 Protein sidechains [i](#)

In the following table, the Percentiles column shows the percent sidechain outliers of the chain as a percentile score with respect to all X-ray entries followed by that with respect to entries of similar resolution.

The Analysed column shows the number of residues for which the sidechain conformation was analysed, and the total number of residues.

Mol	Chain	Analysed	Rotameric	Outliers	Percentiles	
1	A	355/358 (99%)	323 (91%)	32 (9%)	9	25
1	B	357/358 (100%)	326 (91%)	31 (9%)	10	27
1	C	358/358 (100%)	325 (91%)	33 (9%)	9	24
All	All	1070/1074 (100%)	974 (91%)	96 (9%)	9	25

All (96) residues with a non-rotameric sidechain are listed below:

Mol	Chain	Res	Type
1	A	24	ARG
1	A	33	GLU
1	A	62	SER

*Continued on next page...*

*Continued from previous page...*

<b>Mol</b>	<b>Chain</b>	<b>Res</b>	<b>Type</b>
1	A	65	THR
1	A	70	GLN
1	A	71	LEU
1	A	72	THR
1	A	79	SER
1	A	82	ARG
1	A	85	THR
1	A	138	ASP
1	A	141	THR
1	A	149	VAL
1	A	158	ARG
1	A	183	ARG
1	A	186	THR
1	A	198	VAL
1	A	253	SER
1	A	259	THR
1	A	260	SER
1	A	275	ASP
1	A	287	SER
1	A	339	SER
1	A	348	VAL
1	A	350	SER
1	A	362	PHE
1	A	364	VAL
1	A	372	VAL
1	A	377	THR
1	A	398	LEU
1	A	406	THR
1	A	415	LEU
1	B	24	ARG
1	B	33	GLU
1	B	62	SER
1	B	65	THR
1	B	70	GLN
1	B	71	LEU
1	B	72	THR
1	B	85	THR
1	B	138	ASP
1	B	141	THR
1	B	149	VAL
1	B	158	ARG
1	B	183	ARG

*Continued on next page...*

*Continued from previous page...*

<b>Mol</b>	<b>Chain</b>	<b>Res</b>	<b>Type</b>
1	B	186	THR
1	B	198	VAL
1	B	234	ARG
1	B	253	SER
1	B	260	SER
1	B	275	ASP
1	B	287	SER
1	B	339	SER
1	B	340	SER
1	B	348	VAL
1	B	350	SER
1	B	362	PHE
1	B	364	VAL
1	B	372	VAL
1	B	377	THR
1	B	398	LEU
1	B	406	THR
1	B	415	LEU
1	C	24	ARG
1	C	33	GLU
1	C	38	LEU
1	C	62	SER
1	C	65	THR
1	C	70	GLN
1	C	71	LEU
1	C	72	THR
1	C	79	SER
1	C	85	THR
1	C	138	ASP
1	C	141	THR
1	C	158	ARG
1	C	172	ARG
1	C	183	ARG
1	C	186	THR
1	C	198	VAL
1	C	234	ARG
1	C	253	SER
1	C	260	SER
1	C	275	ASP
1	C	287	SER
1	C	339	SER
1	C	348	VAL

*Continued on next page...*

*Continued from previous page...*

Mol	Chain	Res	Type
1	C	350	SER
1	C	362	PHE
1	C	364	VAL
1	C	372	VAL
1	C	377	THR
1	C	398	LEU
1	C	400	ILE
1	C	406	THR
1	C	415	LEU

Sometimes sidechains can be flipped to improve hydrogen bonding and reduce clashes. All (49) such sidechains are listed below:

Mol	Chain	Res	Type
1	A	2	ASN
1	A	8	GLN
1	A	14	ASN
1	A	32	ASN
1	A	41	GLN
1	A	61	ASN
1	A	103	GLN
1	A	142	GLN
1	A	210	ASN
1	A	220	ASN
1	A	230	GLN
1	A	244	HIS
1	A	301	GLN
1	A	304	GLN
1	A	342	ASN
1	A	397	GLN
1	A	399	ASN
1	B	2	ASN
1	B	8	GLN
1	B	14	ASN
1	B	32	ASN
1	B	41	GLN
1	B	61	ASN
1	B	103	GLN
1	B	142	GLN
1	B	210	ASN
1	B	220	ASN
1	B	230	GLN
1	B	244	HIS

*Continued on next page...*

*Continued from previous page...*

Mol	Chain	Res	Type
1	B	301	GLN
1	B	304	GLN
1	B	342	ASN
1	B	399	ASN
1	C	8	GLN
1	C	14	ASN
1	C	32	ASN
1	C	41	GLN
1	C	61	ASN
1	C	103	GLN
1	C	142	GLN
1	C	210	ASN
1	C	220	ASN
1	C	230	GLN
1	C	244	HIS
1	C	301	GLN
1	C	342	ASN
1	C	397	GLN
1	C	399	ASN
1	C	416	ASN

### 5.3.3 RNA [i](#)

There are no RNA molecules in this entry.

### 5.4 Non-standard residues in protein, DNA, RNA chains [i](#)

There are no non-standard protein/DNA/RNA residues in this entry.

### 5.5 Carbohydrates [i](#)

There are no monosaccharides in this entry.

### 5.6 Ligand geometry [i](#)

Of 4 ligands modelled in this entry, 3 are monoatomic - leaving 1 for Mogul analysis.

In the following table, the Counts columns list the number of bonds (or angles) for which Mogul statistics could be retrieved, the number of bonds (or angles) that are observed in the model and the number of bonds (or angles) that are defined in the Chemical Component Dictionary. The Link column lists molecule types, if any, to which the group is linked. The Z score for a bond

length (or angle) is the number of standard deviations the observed value is removed from the expected value. A bond length (or angle) with  $|Z| > 2$  is considered an outlier worth inspection. RMSZ is the root-mean-square of all Z scores of the bond lengths (or angles).

Mol	Type	Chain	Res	Link	Bond lengths			Bond angles		
					Counts	RMSZ	# Z  > 2	Counts	RMSZ	# Z  > 2
3	LMT	B	1429	-	36,36,36	2.78	14 (38%)	47,47,47	2.07	13 (27%)

In the following table, the Chirals column lists the number of chiral outliers, the number of chiral centers analysed, the number of these observed in the model and the number defined in the Chemical Component Dictionary. Similar counts are reported in the Torsion and Rings columns. '-' means no outliers of that kind were identified.

Mol	Type	Chain	Res	Link	Chirals	Torsions	Rings
3	LMT	B	1429	-	-	8/21/61/61	0/2/2/2

All (14) bond length outliers are listed below:

Mol	Chain	Res	Type	Atoms	Z	Observed(Å)	Ideal(Å)
3	B	1429	LMT	C3B-C2B	-9.11	1.29	1.52
3	B	1429	LMT	O4'-C4B	-5.75	1.29	1.43
3	B	1429	LMT	O1B-C1B	-5.24	1.27	1.41
3	B	1429	LMT	C4B-C5B	4.96	1.63	1.53
3	B	1429	LMT	C4B-C3B	4.61	1.64	1.52
3	B	1429	LMT	O2B-C2B	3.92	1.52	1.43
3	B	1429	LMT	O5'-C5'	3.61	1.53	1.44
3	B	1429	LMT	C3'-C4'	-3.03	1.44	1.52
3	B	1429	LMT	C1'-C2'	2.96	1.61	1.52
3	B	1429	LMT	O3B-C3B	2.75	1.49	1.43
3	B	1429	LMT	O1'-C1'	2.74	1.44	1.40
3	B	1429	LMT	C6B-C5B	2.64	1.60	1.51
3	B	1429	LMT	O3'-C3'	2.44	1.48	1.43
3	B	1429	LMT	C6'-C5'	-2.00	1.45	1.51

All (13) bond angle outliers are listed below:

Mol	Chain	Res	Type	Atoms	Z	Observed(°)	Ideal(°)
3	B	1429	LMT	C6'-C5'-C4'	-4.74	99.53	113.33
3	B	1429	LMT	O5'-C5'-C4'	4.51	119.27	109.75
3	B	1429	LMT	C1B-O1B-C4'	-4.30	107.33	117.96
3	B	1429	LMT	C1B-O5B-C5B	4.29	122.12	113.69
3	B	1429	LMT	C1'-C2'-C3'	4.15	118.64	110.00
3	B	1429	LMT	O5B-C1B-C2B	4.04	118.89	110.35
3	B	1429	LMT	C1-O1'-C1'	3.82	120.17	113.84

*Continued on next page...*

Continued from previous page...

Mol	Chain	Res	Type	Atoms	Z	Observed(°)	Ideal(°)
3	B	1429	LMT	O5'-C1'-C2'	3.12	116.96	110.35
3	B	1429	LMT	C3'-C4'-C5'	2.86	117.48	110.93
3	B	1429	LMT	O1'-C1-C2	2.70	119.03	109.56
3	B	1429	LMT	O1'-C1'-C2'	2.64	112.42	108.30
3	B	1429	LMT	O1B-C4'-C3'	2.50	113.92	107.28
3	B	1429	LMT	O1B-C1B-C2B	2.01	113.30	108.10

There are no chirality outliers.

All (8) torsion outliers are listed below:

Mol	Chain	Res	Type	Atoms
3	B	1429	LMT	C4'-C5'-C6'-O6'
3	B	1429	LMT	O1'-C1-C2-C3
3	B	1429	LMT	O5'-C5'-C6'-O6'
3	B	1429	LMT	C1-C2-C3-C4
3	B	1429	LMT	C3-C4-C5-C6
3	B	1429	LMT	C4-C5-C6-C7
3	B	1429	LMT	C7-C8-C9-C10
3	B	1429	LMT	C5-C6-C7-C8

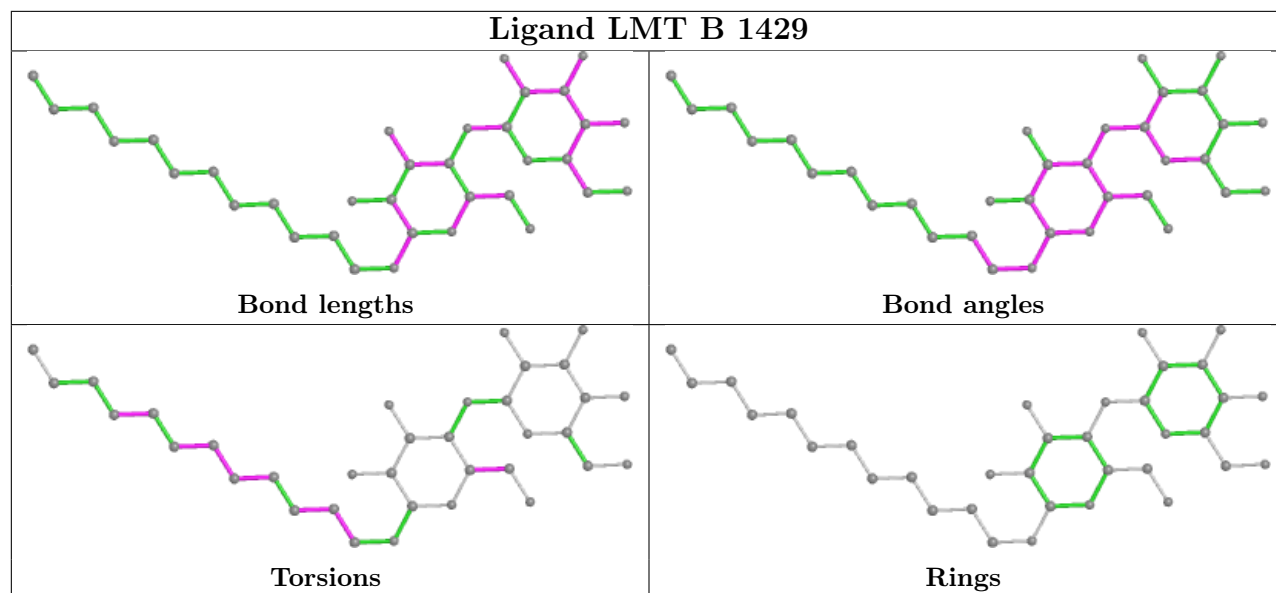
There are no ring outliers.

1 monomer is involved in 4 short contacts:

Mol	Chain	Res	Type	Clashes	Symm-Clashes
3	B	1429	LMT	4	0

The following is a two-dimensional graphical depiction of Mogul quality analysis of bond lengths, bond angles, torsion angles, and ring geometry for all instances of the Ligand of Interest. In addition, ligands with molecular weight > 250 and outliers as shown on the validation Tables will also be included. For torsion angles, if less than 5% of the Mogul distribution of torsion angles is within 10 degrees of the torsion angle in question, then that torsion angle is considered an outlier. Any bond that is central to one or more torsion angles identified as an outlier by Mogul will be highlighted in the graph. For rings, the root-mean-square deviation (RMSD) between the ring in question and similar rings identified by Mogul is calculated over all ring torsion angles. If the average RMSD is greater than 60 degrees and the minimal RMSD between the ring in question and any Mogul-identified rings is also greater than 60 degrees, then that ring is considered an outlier. The outliers are highlighted in purple. The color gray indicates Mogul did not find sufficient equivalents in the CSD to analyse the geometry.





## 5.7 Other polymers [i](#)

There are no such residues in this entry.

## 5.8 Polymer linkage issues [i](#)

There are no chain breaks in this entry.

## 6 Fit of model and data

### 6.1 Protein, DNA and RNA chains

In the following table, the column labelled ‘#RSRZ > 2’ contains the number (and percentage) of RSRZ outliers, followed by percent RSRZ outliers for the chain as percentile scores relative to all X-ray entries and entries of similar resolution. The OWAB column contains the minimum, median, 95<sup>th</sup> percentile and maximum values of the occupancy-weighted average B-factor per residue. The column labelled ‘Q < 0.9’ lists the number of (and percentage) of residues with an average occupancy less than 0.9.

Mol	Chain	Analysed	<RSRZ>	#RSRZ>2	OWAB(Å <sup>2</sup> )	Q<0.9
1	A	428/428 (100%)	0.57	40 (9%) 8 5	58, 106, 180, 254	0
1	B	428/428 (100%)	0.38	25 (5%) 23 18	56, 79, 138, 238	0
1	C	428/428 (100%)	0.57	53 (12%) 4 2	52, 89, 188, 259	0
All	All	1284/1284 (100%)	0.50	118 (9%) 9 6	52, 90, 174, 259	0

All (118) RSRZ outliers are listed below:

Mol	Chain	Res	Type	RSRZ
1	A	140	THR	10.6
1	A	139	GLN	7.9
1	B	270	ALA	6.8
1	C	148	LEU	6.8
1	C	140	THR	6.7
1	A	362	PHE	6.2
1	B	267	ARG	6.1
1	C	142	GLN	6.0
1	C	363	SER	6.0
1	A	54	TYR	5.7
1	A	136	GLN	5.7
1	B	200	ASN	5.6
1	C	150	ALA	5.5
1	C	362	PHE	5.3
1	B	269	ALA	4.9
1	A	148	LEU	4.9
1	A	149	VAL	4.9
1	A	363	SER	4.8
1	B	278	ASN	4.8
1	A	55	ARG	4.7
1	B	268	GLY	4.6
1	A	367	SER	4.6
1	A	372	VAL	4.4

*Continued on next page...*

*Continued from previous page...*

<b>Mol</b>	<b>Chain</b>	<b>Res</b>	<b>Type</b>	<b>RSRZ</b>
1	A	428	GLU	4.4
1	C	146	VAL	4.4
1	C	365	GLY	4.4
1	C	269	ALA	4.3
1	C	266	THR	4.1
1	A	146	VAL	4.0
1	C	61	ASN	3.9
1	C	263	GLY	3.8
1	C	270	ALA	3.7
1	B	263	GLY	3.6
1	B	279	MET	3.5
1	B	262	SER	3.5
1	A	168	GLU	3.5
1	A	137	LEU	3.5
1	A	62	SER	3.4
1	C	135	ARG	3.4
1	C	262	SER	3.4
1	C	267	ARG	3.3
1	A	147	GLY	3.3
1	C	274	TYR	3.3
1	C	58	ASN	3.3
1	C	268	GLY	3.2
1	B	266	THR	3.2
1	B	302	VAL	3.2
1	C	351	ALA	3.1
1	A	280	GLY	3.1
1	C	143	ARG	3.1
1	C	62	SER	3.1
1	A	143	ARG	3.0
1	A	5	GLN	3.0
1	C	63	ASN	3.0
1	C	147	GLY	3.0
1	C	271	GLY	3.0
1	C	280	GLY	3.0
1	C	272	THR	2.9
1	A	53	GLY	2.9
1	C	259	THR	2.9
1	B	277	SER	2.8
1	A	364	VAL	2.8
1	B	298	VAL	2.8
1	C	357	ALA	2.8
1	A	368	THR	2.7

*Continued on next page...*

*Continued from previous page...*

<b>Mol</b>	<b>Chain</b>	<b>Res</b>	<b>Type</b>	<b>RSRZ</b>
1	C	60	ILE	2.7
1	C	298	VAL	2.7
1	B	301	GLN	2.7
1	A	359	GLU	2.7
1	C	113	TYR	2.7
1	C	52	ASN	2.7
1	A	327	VAL	2.7
1	A	380	TYR	2.6
1	A	279	MET	2.6
1	B	271	GLY	2.5
1	B	110	ALA	2.5
1	C	358	MET	2.5
1	B	276	ASP	2.5
1	C	47	ASP	2.5
1	C	54	TYR	2.5
1	A	371	ASP	2.4
1	A	191	PRO	2.4
1	A	385	GLU	2.4
1	B	261	TYR	2.4
1	B	272	THR	2.4
1	C	70	GLN	2.4
1	C	126	THR	2.4
1	C	359	GLU	2.3
1	C	59	GLY	2.3
1	C	260	SER	2.3
1	A	355	LEU	2.3
1	C	5	GLN	2.3
1	C	15	PRO	2.3
1	C	413	LEU	2.3
1	A	213	LEU	2.3
1	A	51	SER	2.2
1	A	375	ALA	2.2
1	B	111	THR	2.2
1	A	341	ILE	2.2
1	B	58	ASN	2.2
1	A	260	SER	2.2
1	C	55	ARG	2.2
1	B	257	SER	2.2
1	B	372	VAL	2.2
1	C	261	TYR	2.2
1	C	360	ALA	2.1
1	B	260	SER	2.1

*Continued on next page...*

*Continued from previous page...*

Mol	Chain	Res	Type	RSRZ
1	C	354	SER	2.1
1	C	200	ASN	2.1
1	C	66	SER	2.1
1	C	149	VAL	2.1
1	B	355	LEU	2.1
1	A	360	ALA	2.1
1	C	8	GLN	2.1
1	A	192	GLU	2.0
1	A	64	ALA	2.0
1	A	369	ILE	2.0
1	C	51	SER	2.0

## 6.2 Non-standard residues in protein, DNA, RNA chains [i](#)

There are no non-standard protein/DNA/RNA residues in this entry.

## 6.3 Carbohydrates [i](#)

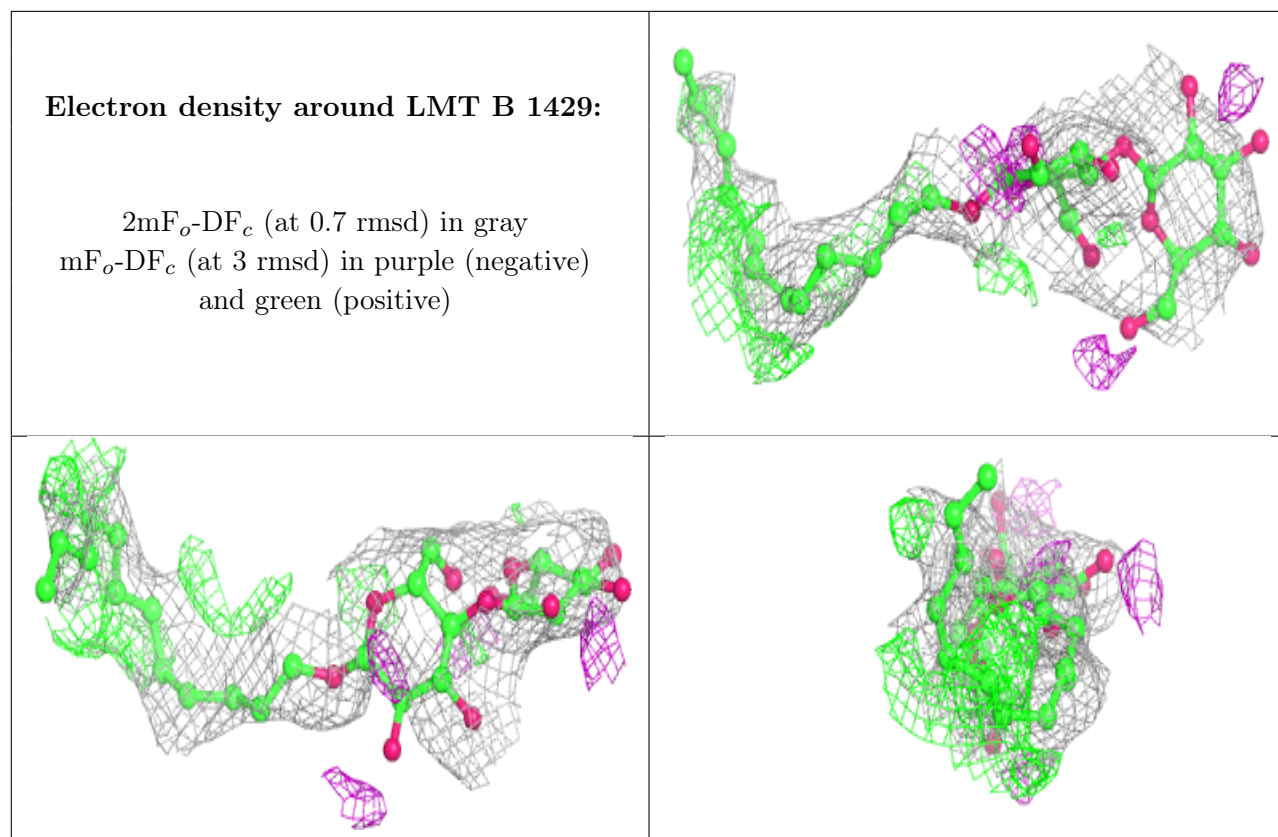
There are no monosaccharides in this entry.

## 6.4 Ligands [i](#)

In the following table, the Atoms column lists the number of modelled atoms in the group and the number defined in the chemical component dictionary. The B-factors column lists the minimum, median, 95<sup>th</sup> percentile and maximum values of B factors of atoms in the group. The column labelled 'Q< 0.9' lists the number of atoms with occupancy less than 0.9.

Mol	Type	Chain	Res	Atoms	RSCC	RSR	B-factors( $\text{\AA}^2$ )	Q<0.9
3	LMT	B	1429	35/35	0.76	0.28	95,129,165,195	0
2	CL	A	1429	1/1	0.89	0.21	25,25,25,25	0
2	CL	C	1429	1/1	0.93	0.11	25,25,25,25	0
2	CL	B	1430	1/1	0.95	0.26	25,25,25,25	0

The following is a graphical depiction of the model fit to experimental electron density of all instances of the Ligand of Interest. In addition, ligands with molecular weight > 250 and outliers as shown on the geometry validation Tables will also be included. Each fit is shown from different orientation to approximate a three-dimensional view.



## 6.5 Other polymers [i](#)

There are no such residues in this entry.