



Full wwPDB X-ray Structure Validation Report ⓘ

Aug 8, 2020 – 08:08 AM BST

PDB ID : 4XJR
Title : The catalytic mechanism of human parainfluenza virus type 3 haemagglutinin-neuraminidase revealed
Authors : Dirr, L.; El-Deeb, I.; Guillon, P.; Carroux, C.; Chavas, L.; von Itzstein, M.
Deposited on : 2015-01-08
Resolution : 3.00 Å(reported)

This is a Full wwPDB X-ray Structure Validation Report for a publicly released PDB entry.

We welcome your comments at validation@mail.wwpdb.org

A user guide is available at

<https://www.wwpdb.org/validation/2017/XrayValidationReportHelp>

with specific help available everywhere you see the ⓘ symbol.

The following versions of software and data (see [references ⓘ](#)) were used in the production of this report:

MolProbity : 4.02b-467
Mogul : 1.8.5 (274361), CSD as541be (2020)
Xtriage (Phenix) : 1.13
EDS : 2.13.1
buster-report : 1.1.7 (2018)
Percentile statistics : 20191225.v01 (using entries in the PDB archive December 25th 2019)
Refmac : 5.8.0158
CCP4 : 7.0.044 (Gargrove)
Ideal geometry (proteins) : Engh & Huber (2001)
Ideal geometry (DNA, RNA) : Parkinson et al. (1996)
Validation Pipeline (wwPDB-VP) : 2.13.1

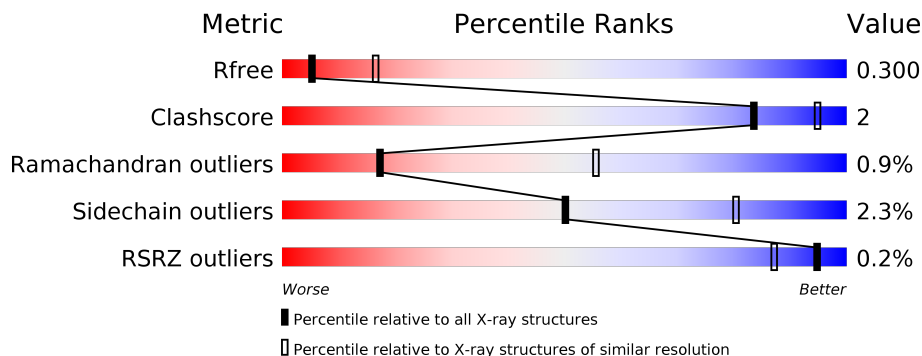
1 Overall quality at a glance

The following experimental techniques were used to determine the structure:

X-RAY DIFFRACTION

The reported resolution of this entry is 3.00 Å.

Percentile scores (ranging between 0-100) for global validation metrics of the entry are shown in the following graphic. The table shows the number of entries on which the scores are based.



Metric	Whole archive (#Entries)	Similar resolution (#Entries, resolution range(Å))
R_{free}	130704	2092 (3.00-3.00)
Clashscore	141614	2416 (3.00-3.00)
Ramachandran outliers	138981	2333 (3.00-3.00)
Sidechain outliers	138945	2336 (3.00-3.00)
RSRZ outliers	127900	1990 (3.00-3.00)

The table below summarises the geometric issues observed across the polymeric chains and their fit to the electron density. The red, orange, yellow and green segments on the lower bar indicate the fraction of residues that contain outliers for ≥ 3 , 2, 1 and 0 types of geometric quality criteria respectively. A grey segment represents the fraction of residues that are not modelled. The numeric value for each fraction is indicated below the corresponding segment, with a dot representing fractions $\leq 5\%$. The upper red bar (where present) indicates the fraction of residues that have poor fit to the electron density. The numeric value is given above the bar.

Mol	Chain	Length	Quality of chain
1	A	454	
1	B	454	
2	C	2	
3	D	3	

2 Entry composition [i](#)

There are 9 unique types of molecules in this entry. The entry contains 6869 atoms, of which 0 are hydrogens and 0 are deuteriums.

In the tables below, the ZeroOcc column contains the number of atoms modelled with zero occupancy, the AltConf column contains the number of residues with at least one atom in alternate conformation and the Trace column contains the number of residues modelled with at most 2 atoms.

- Molecule 1 is a protein called Hemagglutinin-neuraminidase.

Mol	Chain	Residues	Atoms					ZeroOcc	AltConf	Trace
			Total	C	N	O	S			
1	A	429	3369	2129	583	637	20	0	1	0
1	B	426	3339	2112	574	633	20	0	1	0

There are 12 discrepancies between the modelled and reference sequences:

Chain	Residue	Modelled	Actual	Comment	Reference
A	573	HIS	-	expression tag	UNP G8G134
A	574	HIS	-	expression tag	UNP G8G134
A	575	HIS	-	expression tag	UNP G8G134
A	576	HIS	-	expression tag	UNP G8G134
A	577	HIS	-	expression tag	UNP G8G134
A	578	HIS	-	expression tag	UNP G8G134
B	573	HIS	-	expression tag	UNP G8G134
B	574	HIS	-	expression tag	UNP G8G134
B	575	HIS	-	expression tag	UNP G8G134
B	576	HIS	-	expression tag	UNP G8G134
B	577	HIS	-	expression tag	UNP G8G134
B	578	HIS	-	expression tag	UNP G8G134

- Molecule 2 is an oligosaccharide called 2-acetamido-2-deoxy-beta-D-glucopyranose-(1-4)-2-acetamido-2-deoxy-beta-D-glucopyranose.



Mol	Chain	Residues	Atoms				ZeroOcc	AltConf	Trace
			Total	C	N	O			
2	C	2	28	16	2	10	0	0	0

- Molecule 3 is an oligosaccharide called beta-D-mannopyranose-(1-3)-2-acetamido-2-deoxy-beta-D-glucopyranose-(1-4)-2-acetamido-2-deoxy-beta-D-glucopyranose.

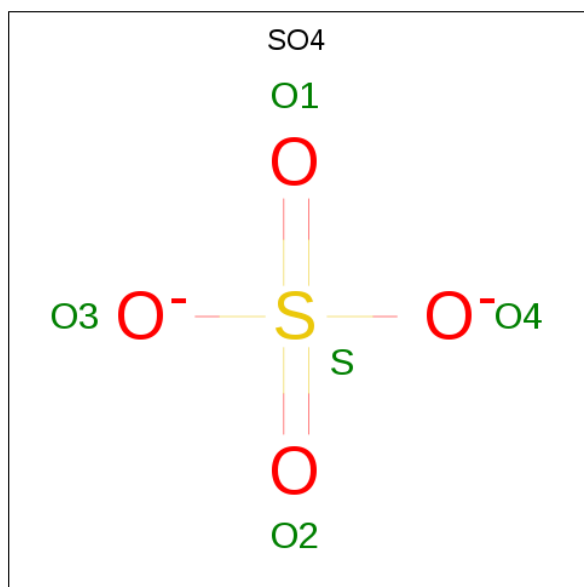


Mol	Chain	Residues	Atoms				ZeroOcc	AltConf	Trace
			Total	C	N	O			
3	D	3	39	22	2	15	0	0	0

- Molecule 4 is CALCIUM ION (three-letter code: CA) (formula: Ca).

Mol	Chain	Residues	Atoms		ZeroOcc	AltConf
			Total	Ca		
4	B	1	1	1	0	0
4	A	1	1	1	0	0

- Molecule 5 is SULFATE ION (three-letter code: SO4) (formula: O₄S).



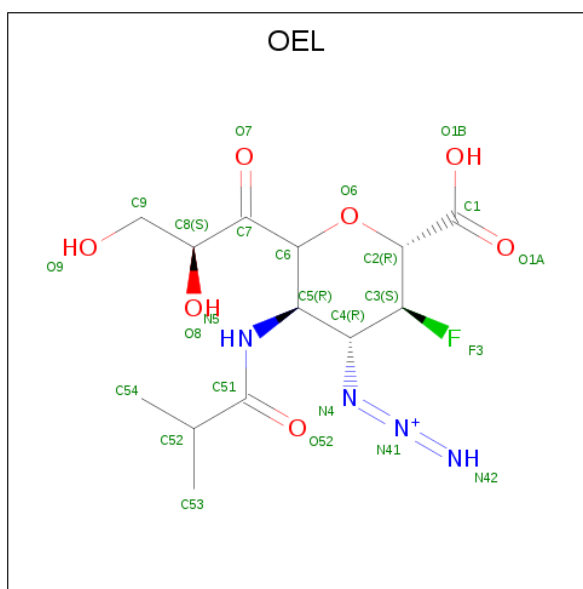
Mol	Chain	Residues	Atoms			ZeroOcc	AltConf
			Total	O	S		
5	A	1	5	4	1	0	0

- Molecule 6 is 2-acetamido-2-deoxy-beta-D-glucopyranose (three-letter code: NAG) (formula: C₈H₁₅NO₆).



Mol	Chain	Residues	Atoms				ZeroOcc	AltConf
6	A	1	Total	C	N	O	0	0
			14	8	1	5		
6	B	1	Total	C	N	O	0	0
			14	8	1	5		

- Molecule 7 is (6R)-2,6-anhydro-3,4,5-trideoxy-6-[(2S)-2,3-dihydroxypropanoyl]-3-fluoro-5-[(2-methylpropanoyl)amino]-4-triaza-1,2-dien -2-ium-1-yl-L-gulonic acid (three-letter code: OEL) (formula: C₁₃H₂₀FN₄O₇).



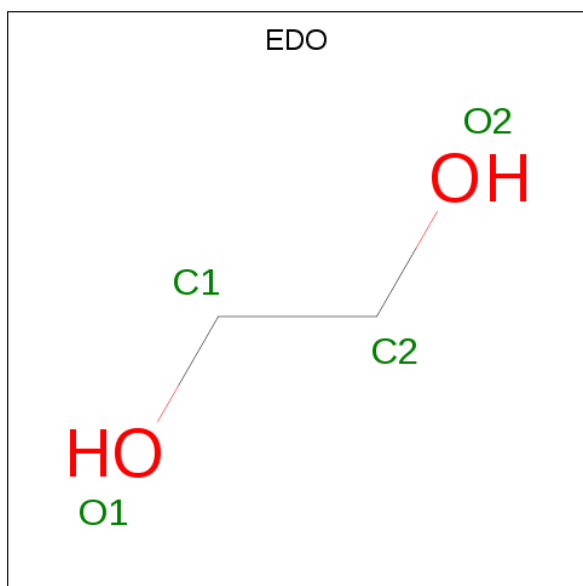
Mol	Chain	Residues	Atoms				ZeroOcc	AltConf	
7	A	1	Total	C	F	N	O	0	0
			25	13	1	4	7		

Continued on next page...

Continued from previous page...

Mol	Chain	Residues	Atoms					ZeroOcc	AltConf
			Total	C	F	N	O		
7	B	1	25	13	1	4	7	0	0

- Molecule 8 is 1,2-ETHANEDIOL (three-letter code: EDO) (formula: C₂H₆O₂).



Mol	Chain	Residues	Atoms			ZeroOcc	AltConf
			Total	C	O		
8	B	1	4	2	2	0	0

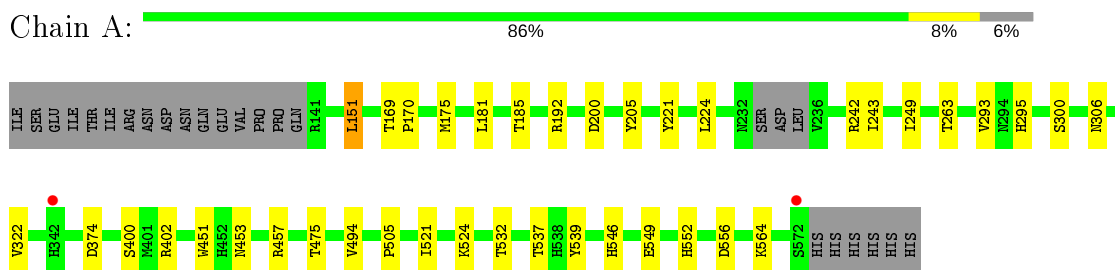
- Molecule 9 is water.

Mol	Chain	Residues	Atoms	ZeroOcc	AltConf
9	A	3	Total O 3 3	0	0
9	B	2	Total O 2 2	0	0

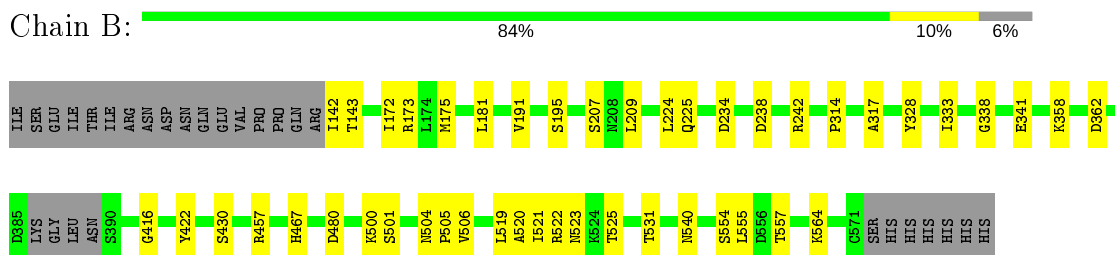
3 Residue-property plots [i](#)

These plots are drawn for all protein, RNA, DNA and oligosaccharide chains in the entry. The first graphic for a chain summarises the proportions of the various outlier classes displayed in the second graphic. The second graphic shows the sequence view annotated by issues in geometry and electron density. Residues are color-coded according to the number of geometric quality criteria for which they contain at least one outlier: green = 0, yellow = 1, orange = 2 and red = 3 or more. A red dot above a residue indicates a poor fit to the electron density ($RSRZ > 2$). Stretches of 2 or more consecutive residues without any outlier are shown as a green connector. Residues present in the sample, but not in the model, are shown in grey.

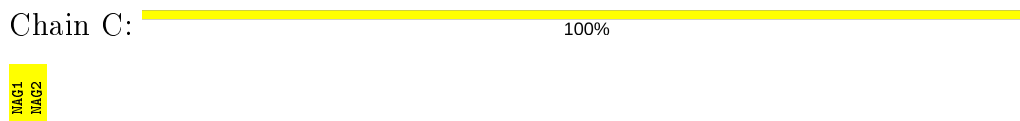
- Molecule 1: Hemagglutinin-neuraminidase



- Molecule 1: Hemagglutinin-neuraminidase



- Molecule 2: 2-acetamido-2-deoxy-beta-D-glucopyranose-(1-4)-2-acetamido-2-deoxy-beta-D-glucopyranose



- Molecule 3: beta-D-mannopyranose-(1-3)-2-acetamido-2-deoxy-beta-D-glucopyranose-(1-4)-2-acetamido-2-deoxy-beta-D-glucopyranose



4 Data and refinement statistics

Property	Value	Source
Space group	P 21 21 21	Depositor
Cell constants a, b, c, α , β , γ	81.85Å 98.30Å 103.26Å 90.00° 90.00° 90.00°	Depositor
Resolution (Å)	50.00 – 3.00 45.71 – 3.00	Depositor EDS
% Data completeness (in resolution range)	99.8 (50.00-3.00) 99.9 (45.71-3.00)	Depositor EDS
R_{merge}	(Not available)	Depositor
R_{sym}	(Not available)	Depositor
$\langle I/\sigma(I) \rangle$ ¹	2.85 (at 3.01Å)	Xtrriage
Refinement program	REFMAC 5.8.0103	Depositor
R, R_{free}	0.190 , 0.298 0.194 , 0.300	Depositor DCC
R_{free} test set	874 reflections (5.05%)	wwPDB-VP
Wilson B-factor (Å ²)	51.6	Xtrriage
Anisotropy	0.125	Xtrriage
Bulk solvent k_{sol} (e/Å ³), B_{sol} (Å ²)	0.37 , 55.9	EDS
L-test for twinning ²	$\langle L \rangle = 0.45$, $\langle L^2 \rangle = 0.28$	Xtrriage
Estimated twinning fraction	0.029 for -h,l,k	Xtrriage
F_o, F_c correlation	0.92	EDS
Total number of atoms	6869	wwPDB-VP
Average B, all atoms (Å ²)	46.0	wwPDB-VP

Xtrriage's analysis on translational NCS is as follows: *The largest off-origin peak in the Patterson function is 6.81% of the height of the origin peak. No significant pseudotranslation is detected.*

¹Intensities estimated from amplitudes.

²Theoretical values of $\langle |L| \rangle$, $\langle L^2 \rangle$ for acentric reflections are 0.5, 0.333 respectively for untwinned datasets, and 0.375, 0.2 for perfectly twinned datasets.

5 Model quality [i](#)

5.1 Standard geometry [i](#)

Bond lengths and bond angles in the following residue types are not validated in this section: BMA, NAG, CA, EDO, SO4, OEL

The Z score for a bond length (or angle) is the number of standard deviations the observed value is removed from the expected value. A bond length (or angle) with $|Z| > 5$ is considered an outlier worth inspection. RMSZ is the root-mean-square of all Z scores of the bond lengths (or angles).

Mol	Chain	Bond lengths		Bond angles	
		RMSZ	# Z >5	RMSZ	# Z >5
1	A	0.48	0/3449	0.72	1/4698 (0.0%)
1	B	0.47	0/3419	0.70	0/4660
All	All	0.48	0/6868	0.71	1/9358 (0.0%)

There are no bond length outliers.

All (1) bond angle outliers are listed below:

Mol	Chain	Res	Type	Atoms	Z	Observed(°)	Ideal(°)
1	A	151	LEU	CA-CB-CG	5.19	127.24	115.30

There are no chirality outliers.

There are no planarity outliers.

5.2 Too-close contacts [i](#)

In the following table, the Non-H and H(model) columns list the number of non-hydrogen atoms and hydrogen atoms in the chain respectively. The H(added) column lists the number of hydrogen atoms added and optimized by MolProbity. The Clashes column lists the number of clashes within the asymmetric unit, whereas Symm-Clashes lists symmetry related clashes.

Mol	Chain	Non-H	H(model)	H(added)	Clashes	Symm-Clashes
1	A	3369	0	3329	14	0
1	B	3339	0	3294	19	0
2	C	28	0	25	0	0
3	D	39	0	34	1	0
4	A	1	0	0	0	0
4	B	1	0	0	0	0
5	A	5	0	0	0	0
6	A	14	0	13	0	0

Continued on next page...

Continued from previous page...

Mol	Chain	Non-H	H(model)	H(added)	Clashes	Symm-Clashes
6	B	14	0	13	0	0
7	A	25	0	17	1	0
7	B	25	0	17	0	0
8	B	4	0	6	0	0
9	A	3	0	0	0	0
9	B	2	0	0	0	0
All	All	6869	0	6748	32	0

The all-atom clashscore is defined as the number of clashes found per 1000 atoms (including hydrogen atoms). The all-atom clashscore for this structure is 2.

All (32) close contacts within the same asymmetric unit are listed below, sorted by their clash magnitude.

Atom-1	Atom-2	Interatomic distance (Å)	Clash overlap (Å)
3:D:2:NAG:O4	3:D:3:BMA:O5	2.16	0.59
1:B:172:ILE:O	1:B:519:LEU:HD13	2.06	0.55
1:A:451:TRP:CH2	1:A:453:ASN:HB2	2.42	0.55
1:A:263:THR:OG1	1:A:295:HIS:HB3	2.08	0.54
1:A:242:ARG:NH1	1:B:242:ARG:O	2.40	0.54
1:B:191:VAL:HG22	1:B:209:LEU:HG	1.90	0.53
1:A:505:PRO:HB2	1:A:521:ILE:HD12	1.91	0.52
1:B:505:PRO:HB2	1:B:521:ILE:HD12	1.93	0.51
1:B:142:ILE:HG23	1:B:143:THR:HG23	1.93	0.51
1:A:224:LEU:HD23	1:A:293:VAL:HG21	1.93	0.50
1:B:314:PRO:HB2	1:B:341[A]:GLU:HB3	1.95	0.49
1:A:221:TYR:HD1	1:A:249:ILE:HD13	1.79	0.48
1:B:555:LEU:HB2	1:B:557:THR:HG22	1.95	0.47
1:A:192:ARG:NH2	7:A:606:OEL:F3	2.35	0.47
1:B:181:LEU:HA	1:B:225:GLN:HE22	1.80	0.46
1:A:494:VAL:HG21	1:A:546:HIS:HB3	1.97	0.46
1:A:175:MET:HE2	1:A:564:LYS:HB3	1.96	0.46
1:B:506:VAL:HG22	1:B:520:ALA:HA	1.98	0.46
1:A:181:LEU:HD22	1:A:205:TYR:CZ	2.51	0.45
1:B:504:ASN:O	1:B:506:VAL:HG23	2.17	0.45
1:B:358:LYS:HA	1:B:362:ASP:OD2	2.16	0.45
1:B:317:ALA:O	1:B:338:GLY:HA3	2.17	0.45
1:A:169:THR:HA	1:A:170:PRO:C	2.38	0.44
1:B:238:ASP:OD1	1:B:564:LYS:NZ	2.51	0.44
1:A:552:HIS:O	1:A:556:ASP:N	2.51	0.44
1:B:224:LEU:HD12	1:B:225:GLN:N	2.34	0.43
1:B:523:ASN:OD1	1:B:525:THR:OG1	2.36	0.43

Continued on next page...

Continued from previous page...

Atom-1	Atom-2	Interatomic distance (Å)	Clash overlap (Å)
1:A:185:THR:HG21	1:B:175:MET:O	2.19	0.43
1:B:328:TYR:HB3	1:B:333:ILE:HD12	2.02	0.42
1:A:400:SER:OG	1:A:402:ARG:HB2	2.20	0.41
1:B:422:TYR:CZ	1:B:480:ASP:HA	2.56	0.40
1:B:430:SER:OG	1:B:467:HIS:N	2.55	0.40

There are no symmetry-related clashes.

5.3 Torsion angles [i](#)

5.3.1 Protein backbone [i](#)

In the following table, the Percentiles column shows the percent Ramachandran outliers of the chain as a percentile score with respect to all X-ray entries followed by that with respect to entries of similar resolution.

The Analysed column shows the number of residues for which the backbone conformation was analysed, and the total number of residues.

Mol	Chain	Analysed	Favoured	Allowed	Outliers	Percentiles	
1	A	426/454 (94%)	394 (92%)	26 (6%)	6 (1%)	11	43
1	B	422/454 (93%)	385 (91%)	35 (8%)	2 (0%)	29	68
All	All	848/908 (93%)	779 (92%)	61 (7%)	8 (1%)	17	55

All (8) Ramachandran outliers are listed below:

Mol	Chain	Res	Type
1	A	374	ASP
1	A	524	LYS
1	A	539	TYR
1	A	322	VAL
1	B	522	ARG
1	A	475	THR
1	A	549	GLU
1	B	416	GLY

5.3.2 Protein sidechains [i](#)

In the following table, the Percentiles column shows the percent sidechain outliers of the chain as a percentile score with respect to all X-ray entries followed by that with respect to entries of similar resolution.

The Analysed column shows the number of residues for which the sidechain conformation was analysed, and the total number of residues.

Mol	Chain	Analysed	Rotameric	Outliers	Percentiles	
1	A	388/412 (94%)	380 (98%)	8 (2%)	53	82
1	B	385/412 (93%)	375 (97%)	10 (3%)	46	78
All	All	773/824 (94%)	755 (98%)	18 (2%)	50	80

All (18) residues with a non-rotameric sidechain are listed below:

Mol	Chain	Res	Type
1	A	151	LEU
1	A	200	ASP
1	A	243	ILE
1	A	300	SER
1	A	306	ASN
1	A	457	ARG
1	A	532	THR
1	A	537	THR
1	B	173	ARG
1	B	195	SER
1	B	207	SER
1	B	234	ASP
1	B	457	ARG
1	B	500	LYS
1	B	501	SER
1	B	531	THR
1	B	540	ASN
1	B	554	SER

Some sidechains can be flipped to improve hydrogen bonding and reduce clashes. All (6) such sidechains are listed below:

Mol	Chain	Res	Type
1	A	433	GLN
1	B	295	HIS
1	B	313	GLN
1	B	417	ASN

Continued on next page...

Continued from previous page...

Mol	Chain	Res	Type
1	B	453	ASN
1	B	540	ASN

5.3.3 RNA [i](#)

There are no RNA molecules in this entry.

5.4 Non-standard residues in protein, DNA, RNA chains [i](#)

There are no non-standard protein/DNA/RNA residues in this entry.

5.5 Carbohydrates [i](#)

5 monosaccharides are modelled in this entry.

In the following table, the Counts columns list the number of bonds (or angles) for which Mogul statistics could be retrieved, the number of bonds (or angles) that are observed in the model and the number of bonds (or angles) that are defined in the Chemical Component Dictionary. The Link column lists molecule types, if any, to which the group is linked. The Z score for a bond length (or angle) is the number of standard deviations the observed value is removed from the expected value. A bond length (or angle) with $|Z| > 2$ is considered an outlier worth inspection. RMSZ is the root-mean-square of all Z scores of the bond lengths (or angles).

Mol	Type	Chain	Res	Link	Bond lengths			Bond angles		
					Counts	RMSZ	# $ Z > 2$	Counts	RMSZ	# $ Z > 2$
2	NAG	C	1	1,2	14,14,15	0.55	0	17,19,21	2.06	6 (35%)
2	NAG	C	2	2	14,14,15	0.44	0	17,19,21	1.07	1 (5%)
3	NAG	D	1	1,3	14,14,15	0.39	0	17,19,21	1.52	3 (17%)
3	NAG	D	2	3	14,14,15	0.63	0	17,19,21	1.42	3 (17%)
3	BMA	D	3	3	11,11,12	0.65	0	15,15,17	1.81	3 (20%)

In the following table, the Chirals column lists the number of chiral outliers, the number of chiral centers analysed, the number of these observed in the model and the number defined in the Chemical Component Dictionary. Similar counts are reported in the Torsion and Rings columns. '2' means no outliers of that kind were identified.

Mol	Type	Chain	Res	Link	Chirals	Torsions	Rings
2	NAG	C	1	1,2	-	2/6/23/26	0/1/1/1
2	NAG	C	2	2	-	1/6/23/26	0/1/1/1
3	NAG	D	1	1,3	-	2/6/23/26	0/1/1/1

Continued on next page...

Continued from previous page...

Mol	Type	Chain	Res	Link	Chirals	Torsions	Rings
3	NAG	D	2	3	-	0/6/23/26	0/1/1/1
3	BMA	D	3	3	-	2/2/19/22	0/1/1/1

There are no bond length outliers.

All (16) bond angle outliers are listed below:

Mol	Chain	Res	Type	Atoms	Z	Observed($^{\circ}$)	Ideal($^{\circ}$)
3	D	3	BMA	C1-O5-C5	5.36	119.45	112.19
2	C	1	NAG	C2-N2-C7	3.95	128.53	122.90
2	C	1	NAG	C8-C7-N2	3.84	122.60	116.10
3	D	1	NAG	C8-C7-N2	3.71	122.39	116.10
2	C	2	NAG	C1-O5-C5	3.46	116.88	112.19
3	D	2	NAG	C4-C3-C2	-2.90	106.77	111.02
2	C	1	NAG	O4-C4-C3	-2.85	103.75	110.35
3	D	1	NAG	C2-N2-C7	2.48	126.44	122.90
2	C	1	NAG	C3-C4-C5	-2.47	105.83	110.24
3	D	1	NAG	O7-C7-N2	-2.40	117.53	121.95
3	D	3	BMA	C2-C3-C4	-2.30	106.92	110.89
3	D	2	NAG	O4-C4-C3	2.26	115.57	110.35
2	C	1	NAG	O4-C4-C5	2.22	114.81	109.30
2	C	1	NAG	C6-C5-C4	2.17	118.09	113.00
3	D	2	NAG	O5-C5-C6	2.09	110.49	107.20
3	D	3	BMA	O5-C5-C6	2.09	110.47	107.20

There are no chirality outliers.

All (7) torsion outliers are listed below:

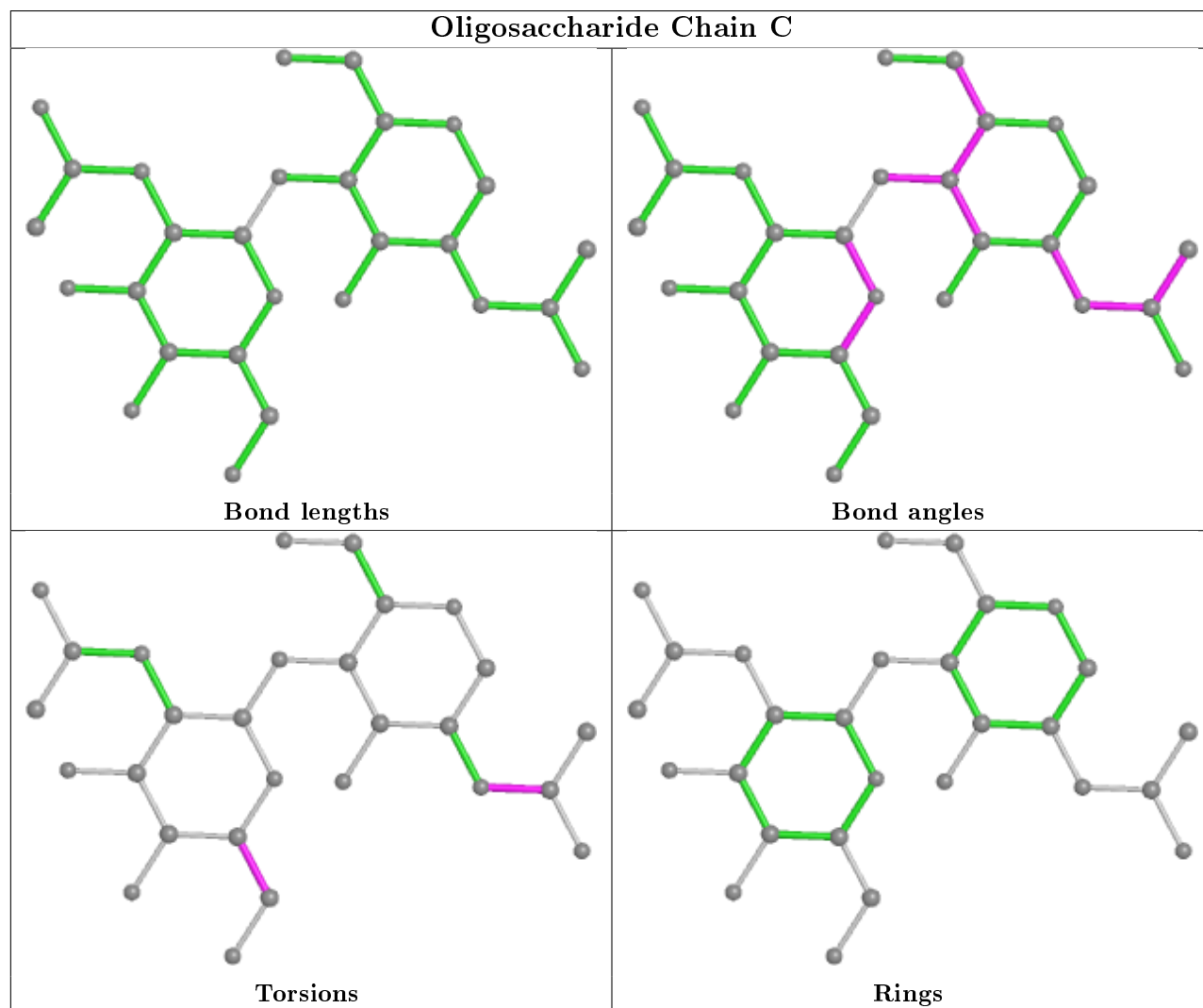
Mol	Chain	Res	Type	Atoms
3	D	3	BMA	O5-C5-C6-O6
3	D	1	NAG	C8-C7-N2-C2
3	D	1	NAG	O7-C7-N2-C2
2	C	1	NAG	C8-C7-N2-C2
2	C	1	NAG	O7-C7-N2-C2
3	D	3	BMA	C4-C5-C6-O6
2	C	2	NAG	O5-C5-C6-O6

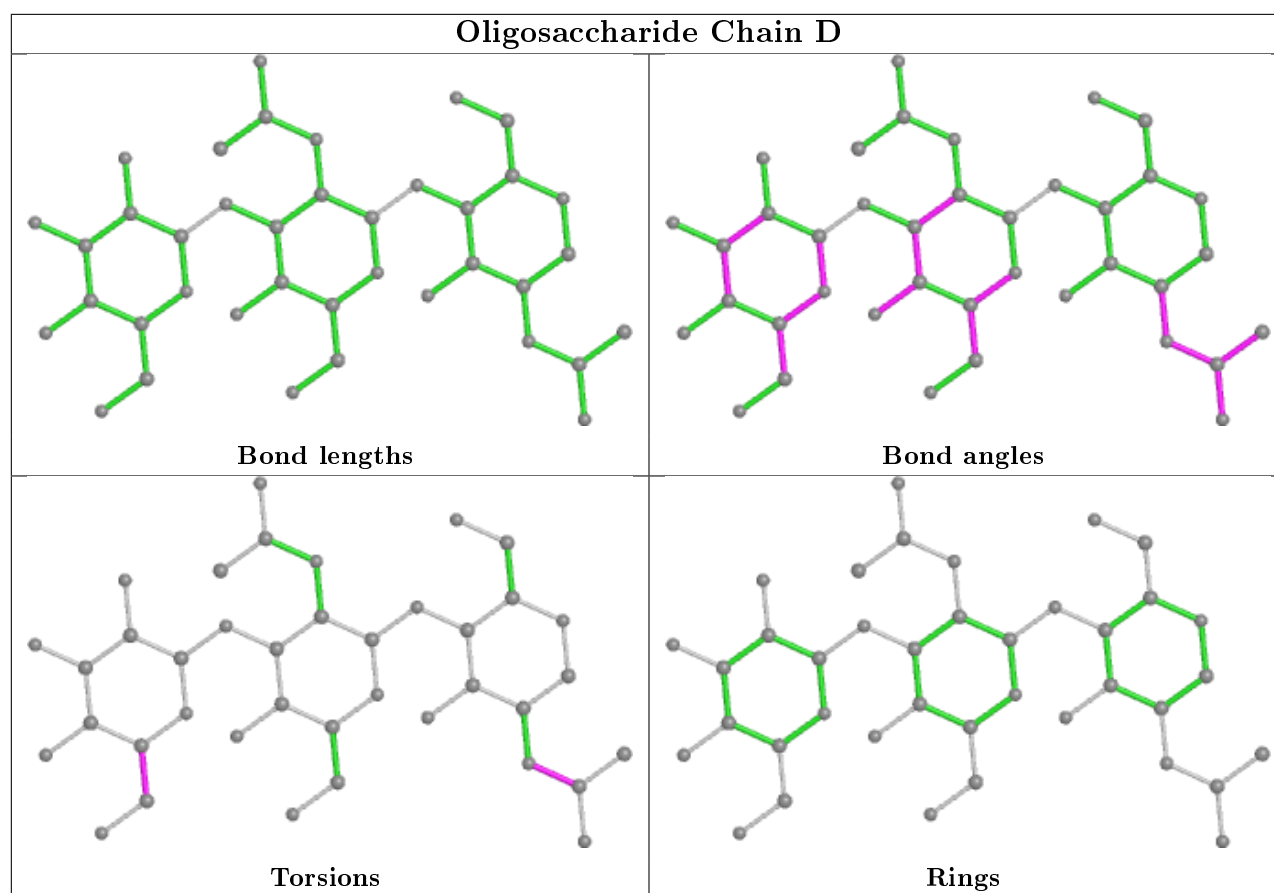
There are no ring outliers.

2 monomers are involved in 1 short contact:

Mol	Chain	Res	Type	Clashes	Symm-Clashes
3	D	3	BMA	1	0
3	D	2	NAG	1	0

The following is a two-dimensional graphical depiction of Mogul quality analysis of bond lengths, bond angles, torsion angles, and ring geometry for oligosaccharide.





5.6 Ligand geometry [i](#)

Of 8 ligands modelled in this entry, 2 are monoatomic - leaving 6 for Mogul analysis.

In the following table, the Counts columns list the number of bonds (or angles) for which Mogul statistics could be retrieved, the number of bonds (or angles) that are observed in the model and the number of bonds (or angles) that are defined in the Chemical Component Dictionary. The Link column lists molecule types, if any, to which the group is linked. The Z score for a bond length (or angle) is the number of standard deviations the observed value is removed from the expected value. A bond length (or angle) with $|Z| > 2$ is considered an outlier worth inspection. RMSZ is the root-mean-square of all Z scores of the bond lengths (or angles).

Mol	Type	Chain	Res	Link	Bond lengths			Bond angles		
					Counts	RMSZ	$\# Z > 2$	Counts	RMSZ	$\# Z > 2$
8	EDO	B	607	-	3,3,3	0.44	0	2,2,2	0.44	0
7	OEL	B	606	1	19,25,25	3.38	2 (10%)	19,35,35	1.96	6 (31%)
5	SO4	A	602	-	4,4,4	0.29	0	6,6,6	0.31	0
6	NAG	B	605	1	14,14,15	0.31	0	17,19,21	0.97	1 (5%)
6	NAG	A	605	1	14,14,15	0.57	0	17,19,21	1.77	3 (17%)
7	OEL	A	606	1	19,25,25	3.26	2 (10%)	19,35,35	2.28	4 (21%)

In the following table, the Chirals column lists the number of chiral outliers, the number of chiral centers analysed, the number of these observed in the model and the number defined in the Chemical Component Dictionary. Similar counts are reported in the Torsion and Rings columns. '-' means no outliers of that kind were identified.

Mol	Type	Chain	Res	Link	Chirals	Torsions	Rings
6	NAG	B	605	1	-	0/6/23/26	0/1/1/1
6	NAG	A	605	1	-	1/6/23/26	0/1/1/1
8	EDO	B	607	-	-	0/1/1/1	-
7	OEL	A	606	1	-	4/20/45/45	0/1/1/1
7	OEL	B	606	1	-	6/20/45/45	0/1/1/1

All (4) bond length outliers are listed below:

Mol	Chain	Res	Type	Atoms	Z	Observed(Å)	Ideal(Å)
7	B	606	OEL	O7-C7	13.05	1.42	1.21
7	A	606	OEL	O7-C7	12.74	1.42	1.21
7	B	606	OEL	N41-N4	6.12	1.39	1.23
7	A	606	OEL	N41-N4	5.56	1.38	1.23

All (14) bond angle outliers are listed below:

Mol	Chain	Res	Type	Atoms	Z	Observed(°)	Ideal(°)
7	A	606	OEL	C52-C51-N5	6.06	121.91	115.95
7	A	606	OEL	O52-C51-C52	-4.90	114.32	122.35
6	A	605	NAG	O5-C1-C2	-4.64	103.96	111.29
7	B	606	OEL	O7-C7-C6	-4.45	107.92	119.87
6	A	605	NAG	C1-O5-C5	4.44	118.20	112.19
7	A	606	OEL	O7-C7-C6	-4.40	108.04	119.87
7	B	606	OEL	C4-C5-N5	-3.77	106.99	110.69
6	B	605	NAG	C1-O5-C5	3.03	116.29	112.19
7	B	606	OEL	O52-C51-C52	-2.97	117.48	122.35
7	B	606	OEL	C4-N4-N41	2.89	122.10	115.54
7	B	606	OEL	C52-C51-N5	2.28	118.19	115.95
7	A	606	OEL	C4-N4-N41	2.10	120.30	115.54
6	A	605	NAG	C4-C3-C2	-2.09	107.95	111.02
7	B	606	OEL	O8-C8-C9	-2.05	105.57	109.97

There are no chirality outliers.

All (11) torsion outliers are listed below:

Mol	Chain	Res	Type	Atoms
7	B	606	OEL	C3-C4-N4-N41

Continued on next page...

Continued from previous page...

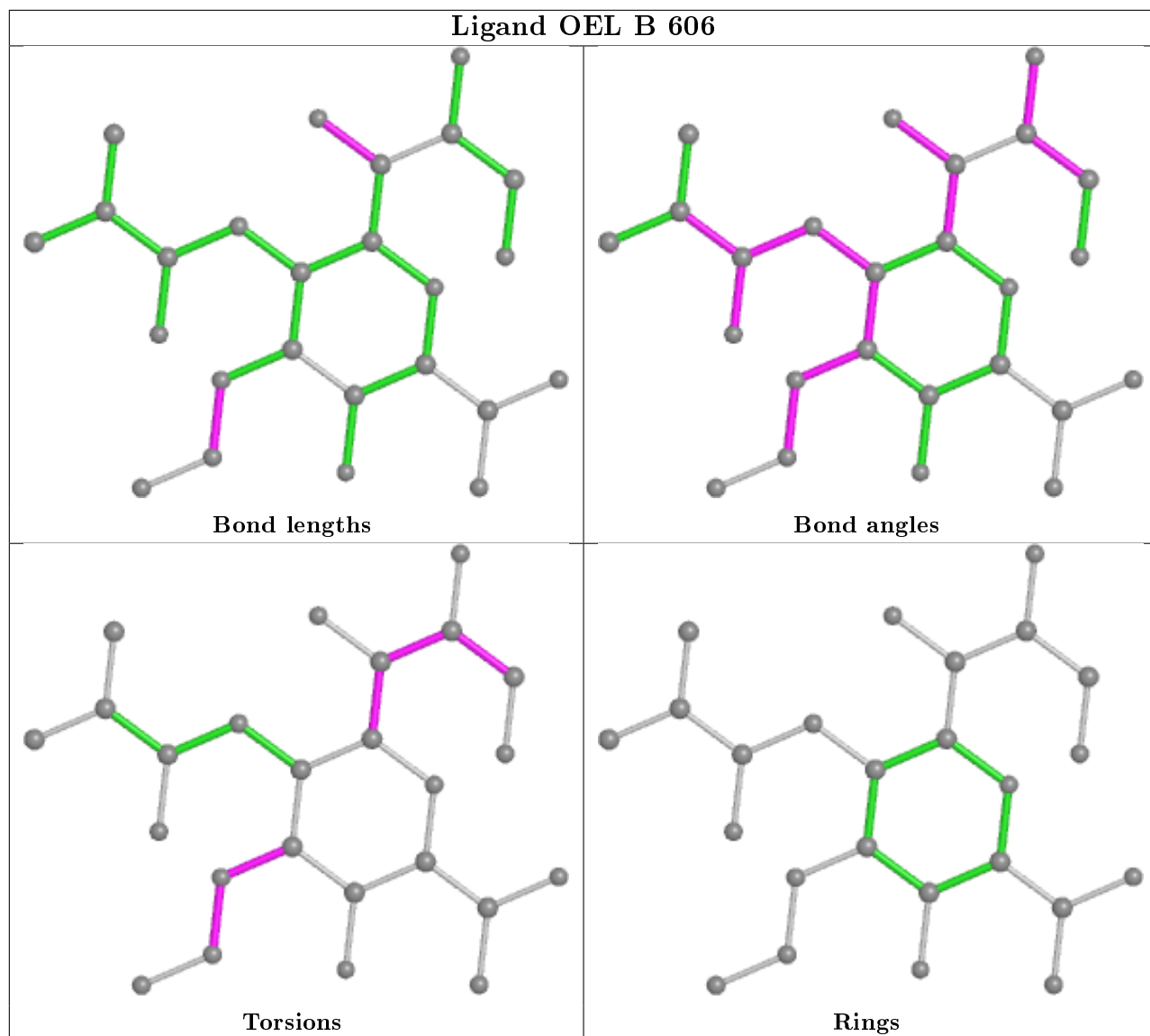
Mol	Chain	Res	Type	Atoms
7	B	606	OEL	C4-N4-N41-N42
7	B	606	OEL	O6-C6-C7-C8
7	B	606	OEL	C6-C7-C8-C9
7	A	606	OEL	O6-C6-C7-C8
7	A	606	OEL	C6-C7-C8-C9
6	A	605	NAG	O5-C5-C6-O6
7	A	606	OEL	O52-C51-C52-C54
7	B	606	OEL	O8-C8-C9-O9
7	B	606	OEL	C6-C7-C8-O8
7	A	606	OEL	N5-C51-C52-C54

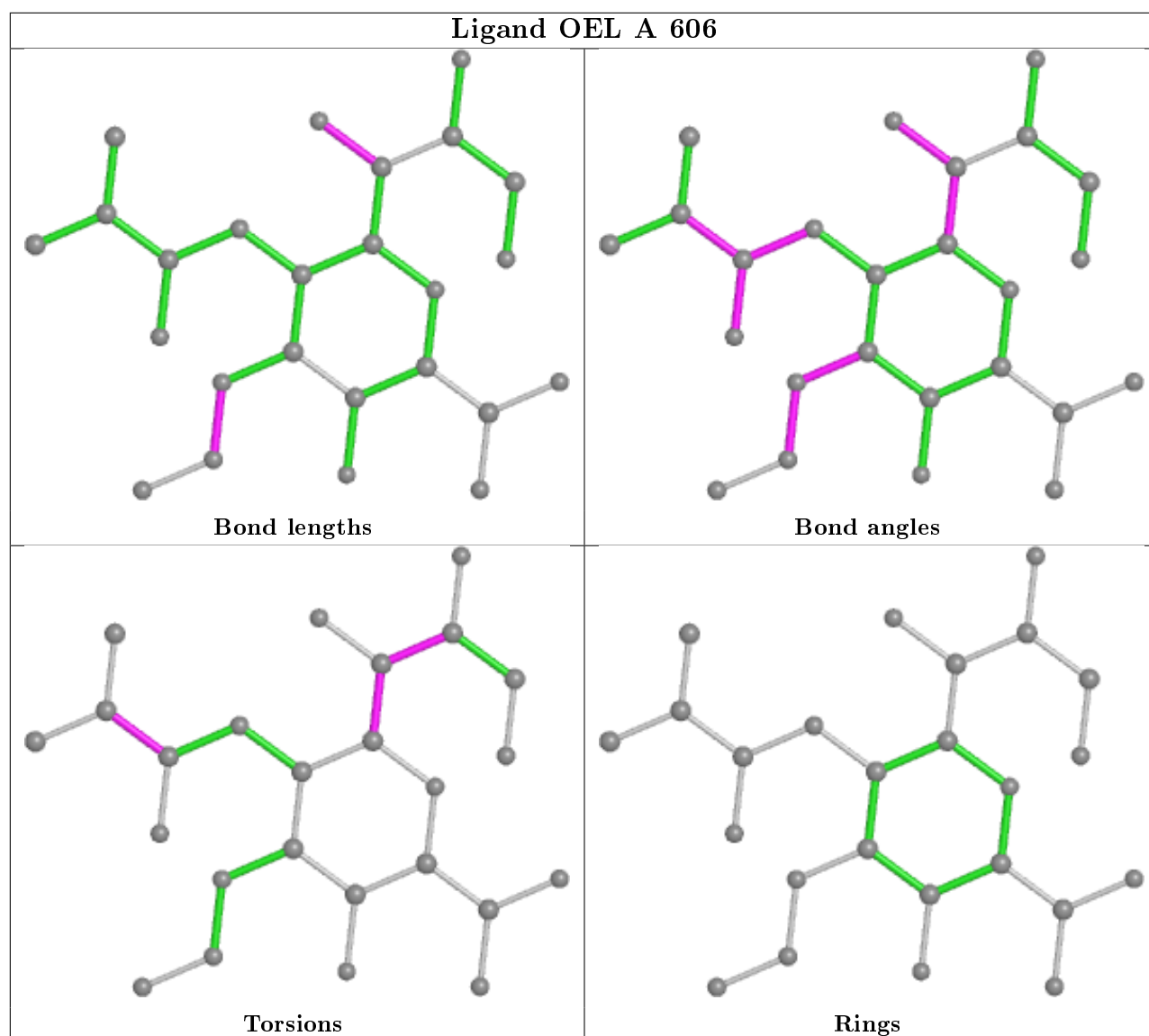
There are no ring outliers.

1 monomer is involved in 1 short contact:

Mol	Chain	Res	Type	Clashes	Symm-Clashes
7	A	606	OEL	1	0

The following is a two-dimensional graphical depiction of Mogul quality analysis of bond lengths, bond angles, torsion angles, and ring geometry for all instances of the Ligand of Interest. In addition, ligands with molecular weight > 250 and outliers as shown on the validation Tables will also be included. For torsion angles, if less than 5% of the Mogul distribution of torsion angles is within 10 degrees of the torsion angle in question, then that torsion angle is considered an outlier. Any bond that is central to one or more torsion angles identified as an outlier by Mogul will be highlighted in the graph. For rings, the root-mean-square deviation (RMSD) between the ring in question and similar rings identified by Mogul is calculated over all ring torsion angles. If the average RMSD is greater than 60 degrees and the minimal RMSD between the ring in question and any Mogul-identified rings is also greater than 60 degrees, then that ring is considered an outlier. The outliers are highlighted in purple. The color gray indicates Mogul did not find sufficient equivalents in the CSD to analyse the geometry.





5.7 Other polymers [i](#)

There are no such residues in this entry.

5.8 Polymer linkage issues [i](#)

There are no chain breaks in this entry.

6 Fit of model and data [i](#)

6.1 Protein, DNA and RNA chains [i](#)

In the following table, the column labelled ‘#RSRZ> 2’ contains the number (and percentage) of RSRZ outliers, followed by percent RSRZ outliers for the chain as percentile scores relative to all X-ray entries and entries of similar resolution. The OWAB column contains the minimum, median, 95th percentile and maximum values of the occupancy-weighted average B-factor per residue. The column labelled ‘Q< 0.9’ lists the number of (and percentage) of residues with an average occupancy less than 0.9.

Mol	Chain	Analysed	<RSRZ>	#RSRZ>2	OWAB(Å ²)	Q<0.9
1	A	429/454 (94%)	-0.34	2 (0%) 91 75	23, 41, 75, 104	0
1	B	426/454 (93%)	-0.34	0 100 100	27, 44, 73, 97	0
All	All	855/908 (94%)	-0.34	2 (0%) 95 87	23, 43, 73, 104	0

All (2) RSRZ outliers are listed below:

Mol	Chain	Res	Type	RSRZ
1	A	572	SER	2.9
1	A	342	HIS	2.2

6.2 Non-standard residues in protein, DNA, RNA chains [i](#)

There are no non-standard protein/DNA/RNA residues in this entry.

6.3 Carbohydrates [i](#)

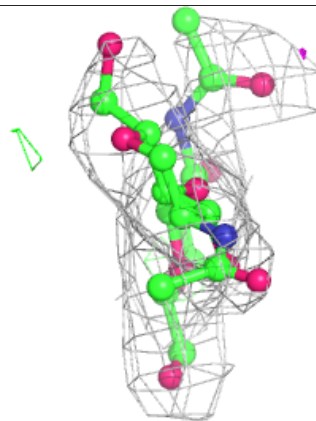
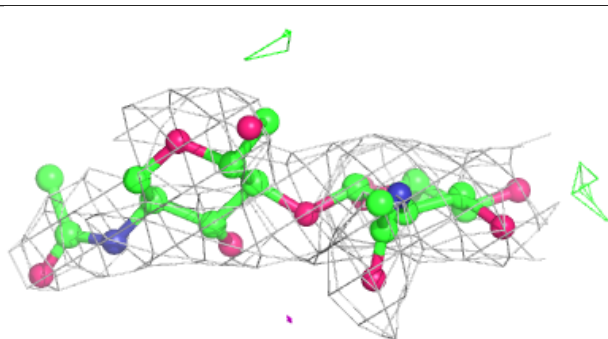
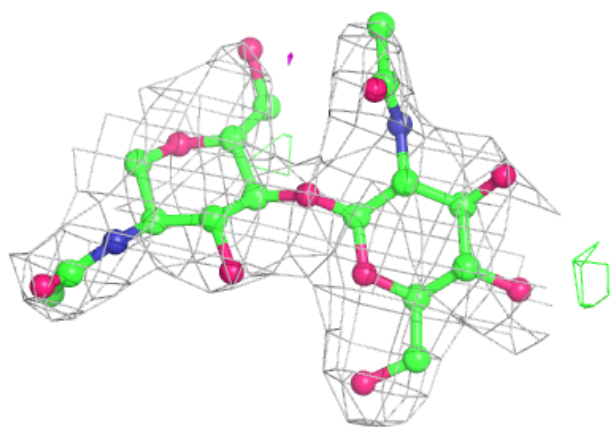
In the following table, the Atoms column lists the number of modelled atoms in the group and the number defined in the chemical component dictionary. The B-factors column lists the minimum, median, 95th percentile and maximum values of B factors of atoms in the group. The column labelled ‘Q< 0.9’ lists the number of atoms with occupancy less than 0.9.

Mol	Type	Chain	Res	Atoms	RSCC	RSR	B-factors(Å ²)	Q<0.9
3	BMA	D	3	11/12	0.81	0.28	48,58,64,67	0
2	NAG	C	2	14/15	0.85	0.20	45,55,60,60	0
3	NAG	D	2	14/15	0.89	0.24	49,59,65,66	0
2	NAG	C	1	14/15	0.91	0.20	50,55,61,63	0
3	NAG	D	1	14/15	0.92	0.15	47,50,53,54	0

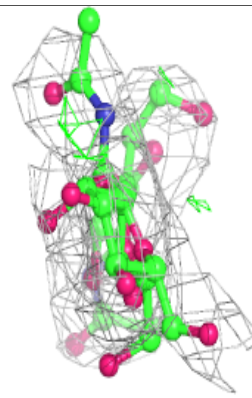
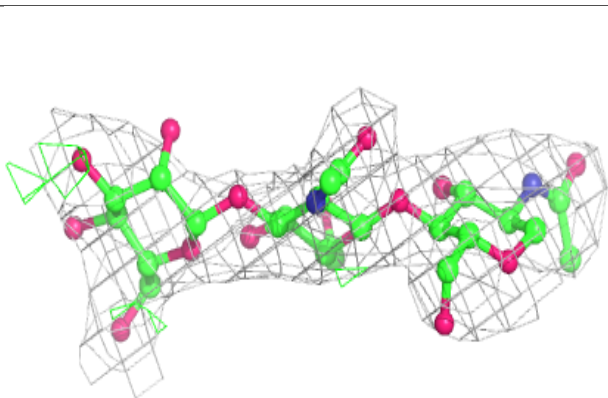
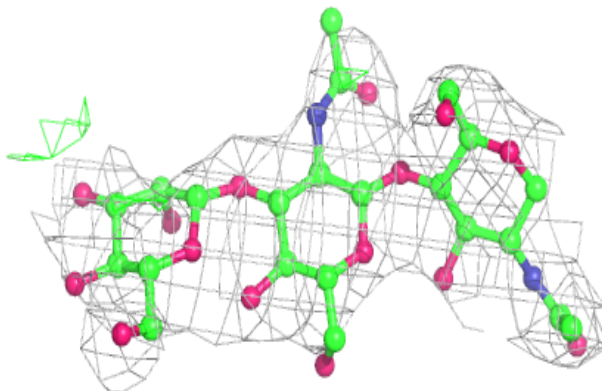
The following is a graphical depiction of the model fit to experimental electron density for oligosaccharide. Each fit is shown from different orientation to approximate a three-dimensional view.

Electron density around Chain C:

$2mF_o-DF_c$ (at 0.7 rmsd) in gray
 mF_o-DF_c (at 3 rmsd) in purple (negative)
and green (positive)

**Electron density around Chain D:**

$2mF_o-DF_c$ (at 0.7 rmsd) in gray
 mF_o-DF_c (at 3 rmsd) in purple (negative)
and green (positive)



6.4 Ligands

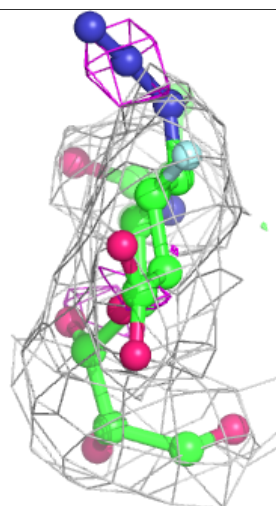
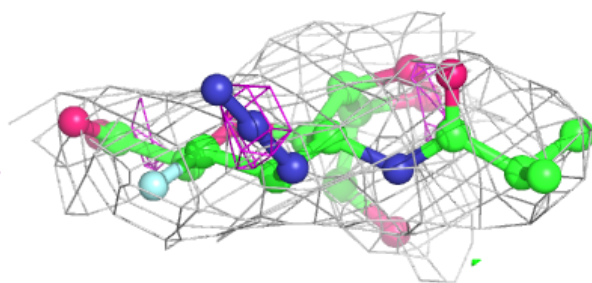
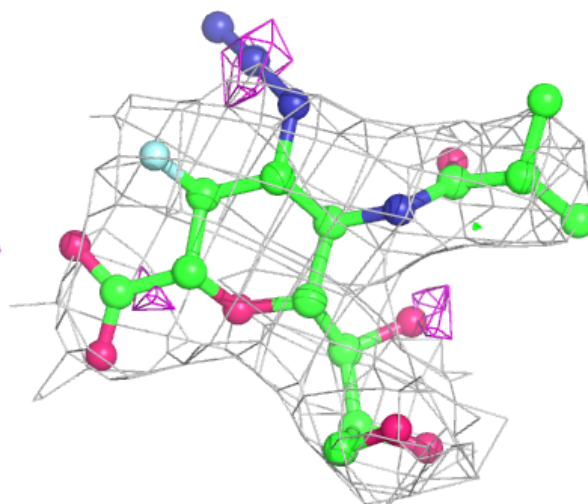
In the following table, the Atoms column lists the number of modelled atoms in the group and the number defined in the chemical component dictionary. The B-factors column lists the minimum, median, 95th percentile and maximum values of B factors of atoms in the group. The column labelled 'Q<0.9' lists the number of atoms with occupancy less than 0.9.

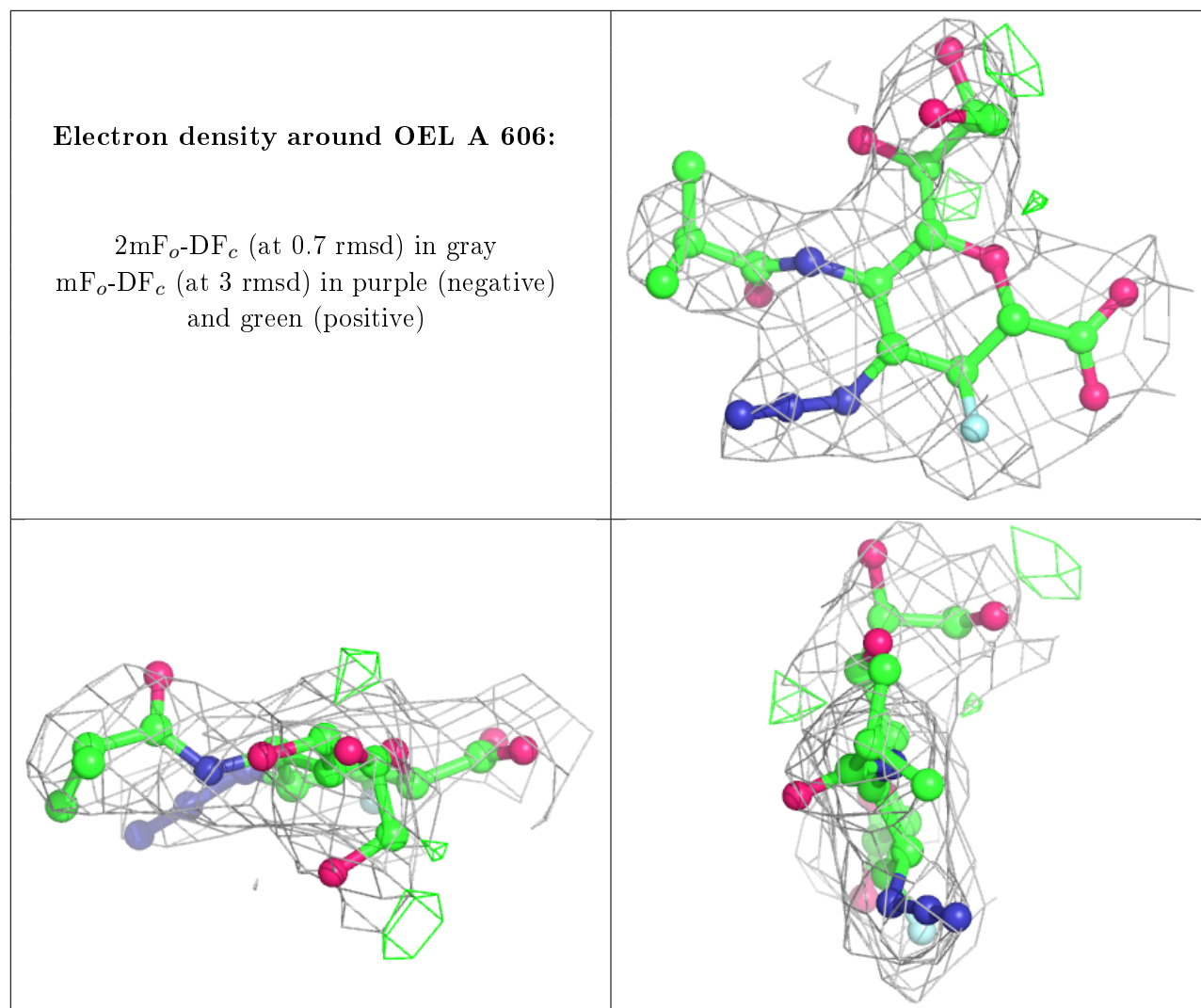
Mol	Type	Chain	Res	Atoms	RSCC	RSR	B-factors(Å ²)	Q<0.9
6	NAG	A	605	14/15	0.80	0.34	61,66,73,74	0
6	NAG	B	605	14/15	0.87	0.19	62,64,65,65	0
7	OEL	B	606	25/25	0.91	0.23	41,47,57,63	0
7	OEL	A	606	25/25	0.93	0.19	42,48,52,57	0
8	EDO	B	607	4/4	0.96	0.16	31,32,34,35	0
4	CA	B	601	1/1	0.97	0.05	55,55,55,55	0
5	SO4	A	602	5/5	0.97	0.12	53,58,60,64	0
4	CA	A	601	1/1	0.99	0.06	35,35,35,35	0

The following is a graphical depiction of the model fit to experimental electron density of all instances of the Ligand of Interest. In addition, ligands with molecular weight > 250 and outliers as shown on the geometry validation Tables will also be included. Each fit is shown from different orientation to approximate a three-dimensional view.

Electron density around OEL B 606:

$2mF_o-DF_c$ (at 0.7 rmsd) in gray
 mF_o-DF_c (at 3 rmsd) in purple (negative)
and green (positive)





6.5 Other polymers [i](#)

There are no such residues in this entry.