



Full wwPDB X-ray Structure Validation Report ⓘ

Oct 10, 2023 – 09:25 AM EDT

PDB ID : 6X2V
Title : Crystal Structure of PKI(DE)NES peptide bound to CRM1
Authors : Baumhardt, J.M.
Deposited on : 2020-05-21
Resolution : 2.82 Å(reported)

This is a Full wwPDB X-ray Structure Validation Report for a publicly released PDB entry.

We welcome your comments at validation@mail.wwpdb.org

A user guide is available at

<https://www.wwpdb.org/validation/2017/XrayValidationReportHelp>

with specific help available everywhere you see the ⓘ symbol.

The types of validation reports are described at

<http://www.wwpdb.org/validation/2017/FAQs#types>.

The following versions of software and data (see [references ⓘ](#)) were used in the production of this report:

MolProbity : 4.02b-467
Mogul : 1.8.5 (274361), CSD as541be (2020)
Xtriage (Phenix) : 1.13
EDS : 2.35.1
buster-report : 1.1.7 (2018)
Percentile statistics : 20191225.v01 (using entries in the PDB archive December 25th 2019)
Refmac : 5.8.0158
CCP4 : 7.0.044 (Gargrove)
Ideal geometry (proteins) : Engh & Huber (2001)
Ideal geometry (DNA, RNA) : Parkinson et al. (1996)
Validation Pipeline (wwPDB-VP) : 2.35.1

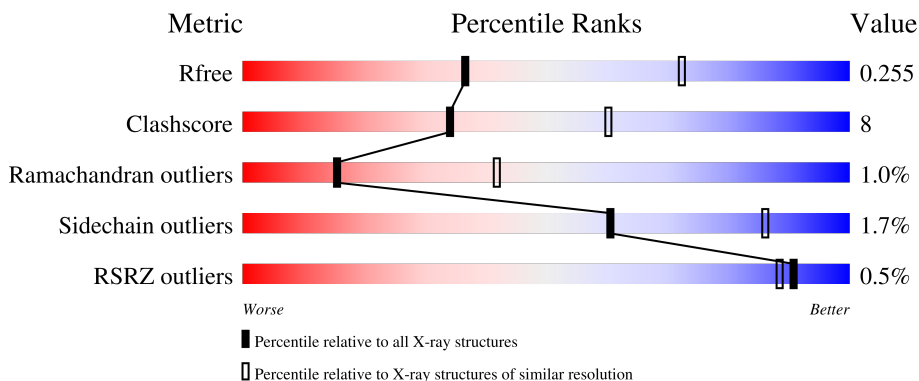
1 Overall quality at a glance

The following experimental techniques were used to determine the structure:

X-RAY DIFFRACTION

The reported resolution of this entry is 2.82 Å.

Percentile scores (ranging between 0-100) for global validation metrics of the entry are shown in the following graphic. The table shows the number of entries on which the scores are based.



Metric	Whole archive (#Entries)	Similar resolution (#Entries, resolution range(Å))
R_{free}	130704	3617 (2.84-2.80)
Clashscore	141614	4060 (2.84-2.80)
Ramachandran outliers	138981	3978 (2.84-2.80)
Sidechain outliers	138945	3980 (2.84-2.80)
RSRZ outliers	127900	3552 (2.84-2.80)

The table below summarises the geometric issues observed across the polymeric chains and their fit to the electron density. The red, orange, yellow and green segments of the lower bar indicate the fraction of residues that contain outliers for ≥ 3 , 2, 1 and 0 types of geometric quality criteria respectively. A grey segment represents the fraction of residues that are not modelled. The numeric value for each fraction is indicated below the corresponding segment, with a dot representing fractions $\leq 5\%$. The upper red bar (where present) indicates the fraction of residues that have poor fit to the electron density. The numeric value is given above the bar.

Mol	Chain	Length	Quality of chain
1	A	216	 79% 14% • 6%
2	B	140	 2% 61% 22% • 14%
3	C	1024	 83% 12% • •
4	D	16	 19% 50% 44% 6%

2 Entry composition

There are 7 unique types of molecules in this entry. The entry contains 10747 atoms, of which 0 are hydrogens and 0 are deuteriums.

In the tables below, the ZeroOcc column contains the number of atoms modelled with zero occupancy, the AltConf column contains the number of residues with at least one atom in alternate conformation and the Trace column contains the number of residues modelled with at most 2 atoms.

- Molecule 1 is a protein called GTP-binding nuclear protein Ran.

Mol	Chain	Residues	Atoms					ZeroOcc	AltConf	Trace
			Total	C	N	O	S			
1	A	202	1618	1045	279	288	6	0	1	0

- Molecule 2 is a protein called Ran-specific GTPase-activating protein 1.

Mol	Chain	Residues	Atoms					ZeroOcc	AltConf	Trace
			Total	C	N	O	S			
2	B	120	982	622	176	180	4	0	1	0

- Molecule 3 is a protein called Exportin-1.

Mol	Chain	Residues	Atoms					ZeroOcc	AltConf	Trace
			Total	C	N	O	S			
3	C	982	7981	5131	1323	1486	41	0	8	0

There are 45 discrepancies between the modelled and reference sequences:

Chain	Residue	Modelled	Actual	Comment	Reference
C	-2	GLY	-	expression tag	UNP P30822
C	-1	GLY	-	expression tag	UNP P30822
C	0	SER	-	expression tag	UNP P30822
C	?	-	VAL	deletion	UNP P30822
C	?	-	GLN	deletion	UNP P30822
C	?	-	ARG	deletion	UNP P30822
C	?	-	LEU	deletion	UNP P30822
C	?	-	PRO	deletion	UNP P30822
C	?	-	ALA	deletion	UNP P30822
C	?	-	THR	deletion	UNP P30822
C	?	-	GLU	deletion	UNP P30822
C	?	-	MET	deletion	UNP P30822
C	?	-	SER	deletion	UNP P30822
C	?	-	PRO	deletion	UNP P30822

Continued on next page...

Continued from previous page...

Chain	Residue	Modelled	Actual	Comment	Reference
C	?	-	LEU	deletion	UNP P30822
C	?	-	ILE	deletion	UNP P30822
C	?	-	GLN	deletion	UNP P30822
C	?	-	LEU	deletion	UNP P30822
C	?	-	SER	deletion	UNP P30822
C	?	-	VAL	deletion	UNP P30822
C	?	-	GLY	deletion	UNP P30822
C	?	-	SER	deletion	UNP P30822
C	?	-	GLN	deletion	UNP P30822
C	?	-	ALA	deletion	UNP P30822
C	?	-	ILE	deletion	UNP P30822
C	?	-	SER	deletion	UNP P30822
C	?	-	THR	deletion	UNP P30822
C	?	-	GLY	deletion	UNP P30822
C	?	-	SER	deletion	UNP P30822
C	?	-	GLY	deletion	UNP P30822
C	?	-	ALA	deletion	UNP P30822
C	?	-	LEU	deletion	UNP P30822
C	?	-	ASN	deletion	UNP P30822
C	?	-	PRO	deletion	UNP P30822
C	?	-	GLU	deletion	UNP P30822
C	?	-	TYR	deletion	UNP P30822
C	?	-	MET	deletion	UNP P30822
C	?	-	LYS	deletion	UNP P30822
C	?	-	ARG	deletion	UNP P30822
C	?	-	PHE	deletion	UNP P30822
C	537	GLY	ASP	conflict	UNP P30822
C	539	CYS	THR	conflict	UNP P30822
C	540	GLU	VAL	conflict	UNP P30822
C	541	GLN	LYS	conflict	UNP P30822
C	1022	CYS	TYR	conflict	UNP P30822

- Molecule 4 is a protein called cAMP-dependent protein kinase inhibitor alpha.

Mol	Chain	Residues	Atoms				ZeroOcc	AltConf	Trace
			Total	C	N	O			
4	D	16	121	76	19	26	0	0	0

There are 3 discrepancies between the modelled and reference sequences:

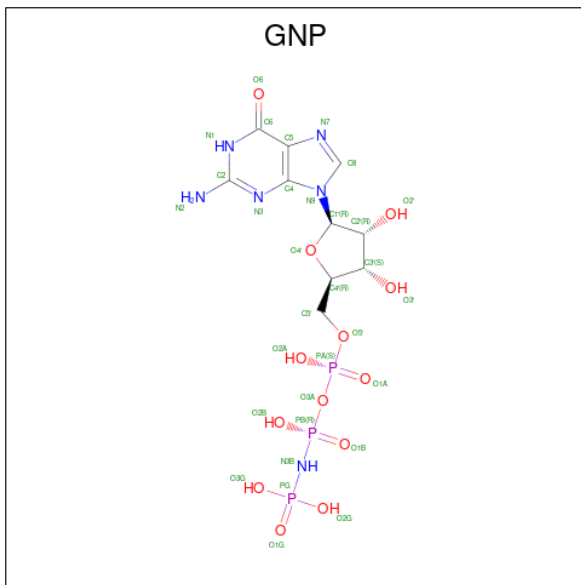
Chain	Residue	Modelled	Actual	Comment	Reference
D	6	LEU	SER	conflict	UNP P61925

Continued on next page...

Continued from previous page...

Chain	Residue	Modelled	Actual	Comment	Reference
D	19	ASP	ASN	engineered mutation	UNP P61925
D	20	GLU	LYS	engineered mutation	UNP P61925

- Molecule 5 is PHOSPHOAMINOPHOSPHONIC ACID-GUANYLATE ESTER (three-letter code: GNP) (formula: C₁₀H₁₇N₆O₁₃P₃).

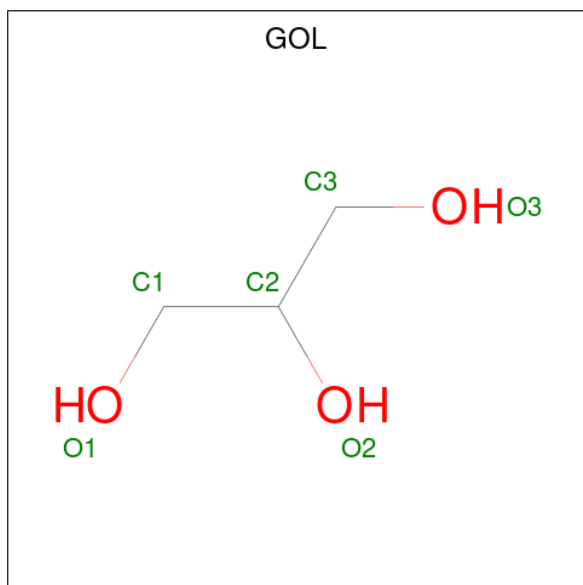


Mol	Chain	Residues	Atoms				ZeroOcc	AltConf	
			Total	C	N	O			P
5	A	1	32	10	6	13	3	0	0

- Molecule 6 is MAGNESIUM ION (three-letter code: MG) (formula: Mg).

Mol	Chain	Residues	Atoms		ZeroOcc	AltConf
6	A	1	Total	Mg	0	0
			1	1		

- Molecule 7 is GLYCEROL (three-letter code: GOL) (formula: C₃H₈O₃).




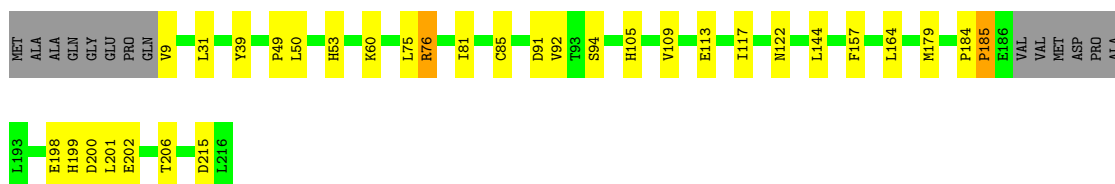
Mol	Chain	Residues	Atoms			ZeroOcc	AltConf
7	A	1	Total	C	O	6	0
			6	3	3		
7	C	1	Total	C	O	6	0
			6	3	3		

3 Residue-property plots

These plots are drawn for all protein, RNA, DNA and oligosaccharide chains in the entry. The first graphic for a chain summarises the proportions of the various outlier classes displayed in the second graphic. The second graphic shows the sequence view annotated by issues in geometry and electron density. Residues are color-coded according to the number of geometric quality criteria for which they contain at least one outlier: green = 0, yellow = 1, orange = 2 and red = 3 or more. A red dot above a residue indicates a poor fit to the electron density ($RSRZ > 2$). Stretches of 2 or more consecutive residues without any outlier are shown as a green connector. Residues present in the sample, but not in the model, are shown in grey.

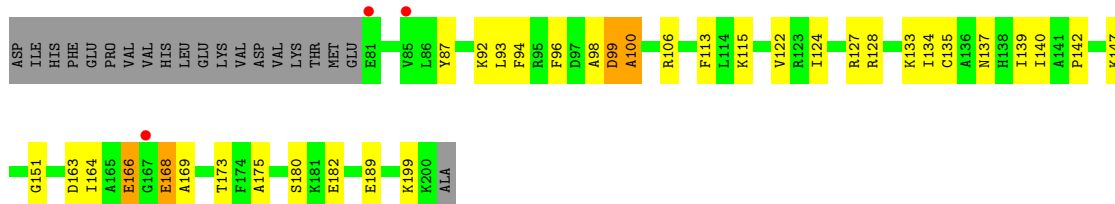
- Molecule 1: GTP-binding nuclear protein Ran

Chain A: 




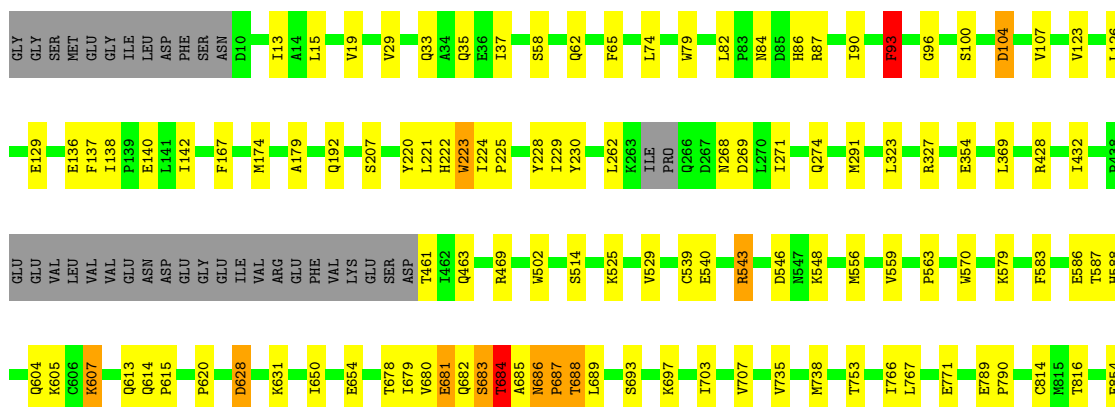
- Molecule 2: Ran-specific GTPase-activating protein 1

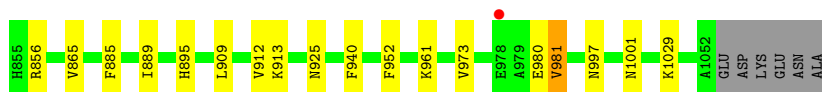
Chain B: 



- Molecule 3: Exportin-1

Chain C: 





- Molecule 4: cAMP-dependent protein kinase inhibitor alpha



4 Data and refinement statistics

Property	Value	Source
Space group	P 43 21 2	Depositor
Cell constants a, b, c, α , β , γ	107.24Å 107.24Å 305.13Å 90.00° 90.00° 90.00°	Depositor
Resolution (Å)	47.96 – 2.82 47.96 – 2.82	Depositor EDS
% Data completeness (in resolution range)	92.9 (47.96-2.82) 88.9 (47.96-2.82)	Depositor EDS
R_{merge}	0.39	Depositor
R_{sym}	(Not available)	Depositor
$\langle I/\sigma(I) \rangle$ ¹	1.94 (at 2.81Å)	Xtrriage
Refinement program	PHENIX 1.11.1_2575	Depositor
R, R_{free}	0.203 , 0.262 0.205 , 0.255	Depositor DCC
R_{free} test set	2000 reflections (4.91%)	wwPDB-VP
Wilson B-factor (Å ²)	41.1	Xtrriage
Anisotropy	0.023	Xtrriage
Bulk solvent k_{sol} (e/Å ³), B_{sol} (Å ²)	0.29 , 33.4	EDS
L-test for twinning ²	$\langle L \rangle = 0.48$, $\langle L^2 \rangle = 0.31$	Xtrriage
Estimated twinning fraction	No twinning to report.	Xtrriage
F_o, F_c correlation	0.92	EDS
Total number of atoms	10747	wwPDB-VP
Average B, all atoms (Å ²)	43.0	wwPDB-VP

Xtrriage's analysis on translational NCS is as follows: *The largest off-origin peak in the Patterson function is 3.06% of the height of the origin peak. No significant pseudotranslation is detected.*

¹Intensities estimated from amplitudes.

²Theoretical values of $\langle |L| \rangle$, $\langle L^2 \rangle$ for acentric reflections are 0.5, 0.333 respectively for untwinned datasets, and 0.375, 0.2 for perfectly twinned datasets.

5 Model quality [i](#)

5.1 Standard geometry [i](#)

Bond lengths and bond angles in the following residue types are not validated in this section: GNP, GOL, MG

The Z score for a bond length (or angle) is the number of standard deviations the observed value is removed from the expected value. A bond length (or angle) with $|Z| > 5$ is considered an outlier worth inspection. RMSZ is the root-mean-square of all Z scores of the bond lengths (or angles).

Mol	Chain	Bond lengths		Bond angles	
		RMSZ	# Z >5	RMSZ	# Z >5
1	A	0.39	0/1657	0.50	0/2245
2	B	0.35	0/999	0.70	2/1335 (0.1%)
3	C	0.36	0/8136	0.45	2/11022 (0.0%)
4	D	0.64	0/120	0.59	0/161
All	All	0.36	0/10912	0.49	4/14763 (0.0%)

Chiral center outliers are detected by calculating the chiral volume of a chiral center and verifying if the center is modelled as a planar moiety or with the opposite hand. A planarity outlier is detected by checking planarity of atoms in a peptide group, atoms in a mainchain group or atoms of a sidechain that are expected to be planar.

Mol	Chain	#Chirality outliers	#Planarity outliers
3	C	0	1

There are no bond length outliers.

All (4) bond angle outliers are listed below:

Mol	Chain	Res	Type	Atoms	Z	Observed($^{\circ}$)	Ideal($^{\circ}$)
2	B	168	GLU	N-CA-CB	14.80	137.24	110.60
2	B	166	GLU	N-CA-C	-10.09	83.75	111.00
3	C	684	THR	N-CA-C	-5.23	96.87	111.00
3	C	981	VAL	C-N-CD	5.11	139.12	128.40

There are no chirality outliers.

All (1) planarity outliers are listed below:

Mol	Chain	Res	Type	Group
3	C	543[B]	ARG	Mainchain

5.2 Too-close contacts

In the following table, the Non-H and H(model) columns list the number of non-hydrogen atoms and hydrogen atoms in the chain respectively. The H(added) column lists the number of hydrogen atoms added and optimized by MolProbity. The Clashes column lists the number of clashes within the asymmetric unit, whereas Symm-Clashes lists symmetry-related clashes.

Mol	Chain	Non-H	H(model)	H(added)	Clashes	Symm-Clashes
1	A	1618	0	1610	21	0
2	B	982	0	979	41	0
3	C	7981	0	8067	120	0
4	D	121	0	123	8	0
5	A	32	0	12	0	0
6	A	1	0	0	0	0
7	A	6	0	8	0	0
7	C	6	0	8	0	0
All	All	10747	0	10807	180	0

The all-atom clashscore is defined as the number of clashes found per 1000 atoms (including hydrogen atoms). The all-atom clashscore for this structure is 8.

All (180) close contacts within the same asymmetric unit are listed below, sorted by their clash magnitude.

Atom-1	Atom-2	Interatomic distance (Å)	Clash overlap (Å)
2:B:142:PRO:CB	2:B:199:LYS:HE3	1.24	1.62
2:B:142:PRO:HB2	2:B:199:LYS:CE	1.48	1.38
2:B:142:PRO:CG	2:B:199:LYS:HE3	1.72	1.17
2:B:142:PRO:CB	2:B:199:LYS:CE	2.17	1.11
3:C:687:PRO:O	3:C:689:LEU:N	1.88	1.05
2:B:142:PRO:HG2	2:B:199:LYS:HG3	1.48	0.95
3:C:913:LYS:HG2	3:C:961:LYS:NZ	1.81	0.95
3:C:912:VAL:HG23	3:C:961:LYS:HE2	1.53	0.90
3:C:912:VAL:HG23	3:C:961:LYS:CE	2.02	0.90
2:B:142:PRO:HG2	2:B:199:LYS:CG	2.06	0.85
2:B:142:PRO:HB2	2:B:199:LYS:HE3	0.86	0.85
3:C:142:ILE:HD12	3:C:192:GLN:HG2	1.57	0.85
2:B:142:PRO:HB2	2:B:199:LYS:NZ	1.92	0.83
3:C:104:ASP:HB2	3:C:107:VAL:HG22	1.60	0.83
3:C:687:PRO:C	3:C:689:LEU:H	1.80	0.83
2:B:142:PRO:HG2	2:B:199:LYS:HE3	1.62	0.81
3:C:686:ASN:CB	3:C:687:PRO:HA	2.12	0.79
2:B:142:PRO:CG	2:B:199:LYS:CE	2.57	0.77
3:C:913:LYS:HG2	3:C:961:LYS:HZ1	1.52	0.75

Continued on next page...

Continued from previous page...

Atom-1	Atom-2	Interatomic distance (Å)	Clash overlap (Å)
3:C:683:SER:O	3:C:687:PRO:HB3	1.88	0.74
2:B:142:PRO:HG2	2:B:199:LYS:CE	2.17	0.74
3:C:913:LYS:HG3	3:C:961:LYS:HE2	1.70	0.72
3:C:540:GLU:O	3:C:543[A]:ARG:NH2	2.22	0.72
2:B:96:PHE:HB3	2:B:173:THR:HG23	1.72	0.71
1:A:201:LEU:HD11	2:B:147:LYS:HE3	1.70	0.70
3:C:789:GLU:HG3	3:C:790:PRO:HD3	1.72	0.70
3:C:563:PRO:HG3	3:C:605:LYS:HD2	1.73	0.70
4:D:19:ASP:O	4:D:20:GLU:HB2	1.90	0.70
3:C:913:LYS:HG2	3:C:961:LYS:HZ3	1.59	0.67
3:C:268:ASN:HB3	3:C:271:ILE:HD12	1.76	0.67
3:C:912:VAL:HG21	3:C:961:LYS:HD3	1.78	0.65
3:C:687:PRO:CG	3:C:688:THR:H	2.09	0.65
2:B:113:PHE:CE1	2:B:124:ILE:HD11	2.31	0.65
3:C:137:PHE:HD2	3:C:138:ILE:HD12	1.63	0.64
2:B:113:PHE:HD1	2:B:140:ILE:HD11	1.63	0.63
1:A:49:PRO:HB3	1:A:60:LYS:NZ	2.13	0.63
1:A:179:MET:O	2:B:127:ARG:NH2	2.28	0.63
2:B:87:TYR:HD2	2:B:113:PHE:CE2	2.17	0.62
3:C:142:ILE:CD1	3:C:192:GLN:HG2	2.27	0.62
3:C:913:LYS:CG	3:C:961:LYS:NZ	2.61	0.62
3:C:980:GLU:O	3:C:981:VAL:HG23	2.00	0.61
2:B:87:TYR:HB3	2:B:113:PHE:HD2	1.64	0.61
3:C:225:PRO:HG2	3:C:228:TYR:CD1	2.35	0.60
3:C:678:THR:O	3:C:681:GLU:HB3	2.02	0.60
3:C:687:PRO:HG2	3:C:688:THR:H	1.67	0.60
3:C:912:VAL:CG2	3:C:961:LYS:HD3	2.32	0.59
1:A:91:ASP:HB3	1:A:94:SER:HB3	1.83	0.59
3:C:767:LEU:O	3:C:771:GLU:HG3	2.03	0.58
3:C:686:ASN:CB	3:C:687:PRO:CA	2.82	0.58
2:B:142:PRO:CG	2:B:199:LYS:HG3	2.30	0.58
3:C:461:THR:HG22	3:C:463:GLN:H	1.68	0.58
4:D:16:LEU:HD12	4:D:17:ASP:N	2.19	0.58
3:C:687:PRO:O	3:C:688:THR:HG22	2.03	0.57
2:B:164:ILE:HG23	2:B:169:ALA:HB2	1.86	0.57
3:C:687:PRO:C	3:C:689:LEU:N	2.44	0.57
3:C:684:THR:HG22	3:C:685:ALA:N	2.19	0.57
1:A:202:GLU:O	1:A:206:THR:HG23	2.04	0.57
3:C:997:ASN:O	3:C:1001:ASN:ND2	2.33	0.57
2:B:113:PHE:CD1	2:B:140:ILE:HD11	2.40	0.56
3:C:327:ARG:NH1	3:C:369:LEU:HD12	2.20	0.56

Continued on next page...

Continued from previous page...

Atom-1	Atom-2	Interatomic distance (Å)	Clash overlap (Å)
3:C:693:SER:O	3:C:697:LYS:HG3	2.05	0.56
3:C:469:ARG:HG3	3:C:514:SER:HB2	1.87	0.56
4:D:19:ASP:O	4:D:20:GLU:CB	2.54	0.55
3:C:687:PRO:CD	3:C:688:THR:H	2.20	0.55
3:C:15:LEU:O	3:C:19:VAL:HG23	2.07	0.55
3:C:913:LYS:CG	3:C:961:LYS:HE2	2.35	0.55
1:A:75:LEU:O	1:A:76:ARG:HB2	2.07	0.54
3:C:93:PHE:O	3:C:96:GLY:N	2.40	0.54
3:C:323:LEU:O	3:C:327:ARG:HB2	2.07	0.54
3:C:268:ASN:OD1	3:C:269:ASP:N	2.42	0.53
3:C:687:PRO:CD	3:C:688:THR:N	2.71	0.53
3:C:687:PRO:CG	3:C:688:THR:N	2.72	0.53
3:C:583:PHE:CE1	4:D:18:ILE:HD11	2.44	0.53
3:C:13:ILE:HD11	3:C:58:SER:HA	1.90	0.53
4:D:5:ASN:C	4:D:6:LEU:HD12	2.29	0.53
3:C:167:PHE:CE2	3:C:223:TRP:CZ2	2.96	0.52
3:C:428:ARG:O	3:C:432:ILE:HG13	2.09	0.52
2:B:98:ALA:O	2:B:100:ALA:N	2.39	0.52
2:B:87:TYR:HB3	2:B:113:PHE:CD2	2.45	0.52
2:B:163:ASP:O	2:B:169:ALA:HA	2.10	0.51
3:C:79:TRP:NE1	3:C:129:GLU:OE2	2.33	0.51
3:C:539:CYS:O	3:C:548:LYS:NZ	2.42	0.51
3:C:74:LEU:HD11	3:C:82:LEU:HD11	1.93	0.51
3:C:613:GLN:HG3	3:C:620:PRO:HD3	1.91	0.51
3:C:104:ASP:HB2	3:C:107:VAL:CG2	2.37	0.51
3:C:222:HIS:O	3:C:223:TRP:HB3	2.11	0.51
3:C:583:PHE:CE1	4:D:18:ILE:CD1	2.94	0.51
3:C:142:ILE:HD12	3:C:192:GLN:CG	2.34	0.50
3:C:909:LEU:CD1	3:C:961:LYS:HD2	2.42	0.50
3:C:230:TYR:O	3:C:274:GLN:NE2	2.40	0.49
3:C:93:PHE:C	3:C:93:PHE:CD2	2.84	0.49
1:A:31:LEU:HD23	1:A:50:LEU:HD13	1.94	0.49
3:C:604:GLN:HG3	3:C:650:ILE:HD13	1.95	0.49
2:B:106:ARG:NH1	2:B:135:CYS:O	2.47	0.48
2:B:93:LEU:HD23	2:B:106:ARG:HB3	1.96	0.48
3:C:93:PHE:C	3:C:93:PHE:HD2	2.17	0.48
3:C:913:LYS:CG	3:C:961:LYS:HZ3	2.26	0.48
1:A:85:CYS:HB2	1:A:164:LEU:HD22	1.96	0.48
3:C:913:LYS:CG	3:C:961:LYS:CE	2.92	0.48
3:C:687:PRO:HD2	3:C:688:THR:H	1.79	0.48
3:C:104:ASP:N	3:C:104:ASP:OD1	2.46	0.47

Continued on next page...

Continued from previous page...

Atom-1	Atom-2	Interatomic distance (Å)	Clash overlap (Å)
3:C:579:LYS:NZ	4:D:14:ALA:O	2.48	0.47
3:C:735:VAL:HA	3:C:738:MET:HE2	1.95	0.47
3:C:607:LYS:HB2	3:C:654:GLU:HG3	1.95	0.47
3:C:856:ARG:HD3	3:C:895:HIS:NE2	2.30	0.47
3:C:912:VAL:CG2	3:C:961:LYS:CE	2.86	0.47
2:B:124:ILE:O	2:B:137:ASN:HA	2.14	0.47
3:C:223:TRP:O	3:C:224:ILE:C	2.52	0.47
3:C:614:GLN:NE2	3:C:615:PRO:HD2	2.30	0.47
2:B:92:LYS:HD3	2:B:94:PHE:CZ	2.50	0.47
3:C:33:GLN:O	3:C:37:ILE:HG23	2.15	0.47
2:B:142:PRO:HG2	2:B:199:LYS:CD	2.45	0.47
3:C:925:ASN:HB3	3:C:973:VAL:HG11	1.96	0.47
1:A:53:HIS:ND1	1:A:179:MET:HG2	2.30	0.46
1:A:117:ILE:HB	1:A:144:LEU:HD22	1.97	0.46
3:C:84:ASN:HA	3:C:87:ARG:HD3	1.97	0.46
4:D:19:ASP:HB3	4:D:20:GLU:H	1.50	0.46
3:C:586:GLU:OE1	3:C:587:THR:N	2.49	0.46
3:C:684:THR:CG2	3:C:685:ALA:N	2.78	0.46
2:B:87:TYR:HD2	2:B:113:PHE:CD2	2.34	0.46
2:B:115:LYS:HB2	2:B:122:VAL:HG22	1.97	0.46
3:C:579:LYS:HD2	3:C:579:LYS:HA	1.75	0.46
3:C:136:GLU:O	3:C:140:GLU:HB2	2.16	0.45
1:A:179:MET:CE	2:B:134:ILE:H	2.29	0.45
3:C:980:GLU:O	3:C:980:GLU:HG3	2.15	0.45
3:C:628:ASP:OD1	3:C:631:LYS:HB2	2.17	0.45
3:C:682:GLN:O	3:C:682:GLN:HG3	2.17	0.45
3:C:502:TRP:CZ2	3:C:546:ASP:HB3	2.51	0.45
2:B:164:ILE:CG2	2:B:169:ALA:HB2	2.45	0.45
3:C:909:LEU:HD11	3:C:961:LYS:HD2	1.99	0.45
3:C:225:PRO:HG2	3:C:228:TYR:HD1	1.79	0.44
3:C:354:GLU:HA	3:C:354:GLU:OE1	2.18	0.44
3:C:570:TRP:CD2	3:C:614:GLN:HG3	2.52	0.44
3:C:678:THR:OG1	3:C:679:ILE:N	2.51	0.44
3:C:687:PRO:HD2	3:C:688:THR:N	2.31	0.44
3:C:220:TYR:HB3	3:C:224:ILE:HG21	1.98	0.44
1:A:184:PRO:HG2	2:B:139:ILE:HG12	1.99	0.44
2:B:94:PHE:HB2	2:B:175:ALA:HB3	2.00	0.43
3:C:771:GLU:HG2	3:C:814:CYS:HA	1.99	0.43
3:C:854:GLU:H	3:C:854:GLU:CD	2.21	0.43
3:C:586:GLU:OE1	3:C:588:HIS:N	2.45	0.43
2:B:87:TYR:HD2	2:B:113:PHE:HE2	1.62	0.43

Continued on next page...

Continued from previous page...

Atom-1	Atom-2	Interatomic distance (Å)	Clash overlap (Å)
2:B:180:SER:OG	2:B:182:GLU:HG2	2.18	0.43
3:C:816:THR:HG23	3:C:865:VAL:HG11	2.01	0.43
1:A:49:PRO:HB3	1:A:60:LYS:HZ1	1.83	0.43
1:A:9:VAL:HG13	1:A:9:VAL:O	2.18	0.43
2:B:151:GLY:HA2	3:C:753:THR:HA	2.00	0.43
1:A:185:PRO:O	2:B:139:ILE:HG13	2.18	0.42
2:B:96:PHE:HB3	2:B:173:THR:CG2	2.46	0.42
3:C:525:LYS:O	3:C:529:VAL:HG12	2.18	0.42
3:C:680:VAL:CG1	3:C:681:GLU:N	2.82	0.42
3:C:885:PHE:CZ	3:C:889:ILE:HD11	2.54	0.42
3:C:174:MET:HG3	3:C:179:ALA:HB2	2.02	0.42
1:A:109:VAL:O	1:A:113:GLU:HG2	2.18	0.42
3:C:123:VAL:HA	3:C:126:LEU:HD12	2.01	0.42
3:C:13:ILE:HD11	3:C:58:SER:CA	2.50	0.42
3:C:138:ILE:O	3:C:142:ILE:HG13	2.20	0.42
3:C:684:THR:HG22	3:C:685:ALA:H	1.85	0.42
3:C:703[A]:ILE:O	3:C:707:VAL:HG23	2.20	0.42
3:C:913:LYS:HG2	3:C:961:LYS:CE	2.48	0.42
1:A:49:PRO:HB3	1:A:60:LYS:HZ3	1.82	0.41
3:C:29:VAL:O	3:C:33:GLN:HG2	2.20	0.41
3:C:679:ILE:O	3:C:683:SER:CB	2.68	0.41
1:A:198:GLU:O	1:A:202:GLU:HG3	2.20	0.41
3:C:327:ARG:HH11	3:C:369:LEU:HD12	1.85	0.41
3:C:703[A]:ILE:HD13	3:C:766:ILE:HG13	2.03	0.41
3:C:86:HIS:O	3:C:90:ILE:HG13	2.20	0.41
3:C:221:LEU:HD23	3:C:224:ILE:HD11	2.02	0.41
3:C:229:ILE:HD13	3:C:262:LEU:CD1	2.51	0.41
3:C:262:LEU:HD23	3:C:262:LEU:HA	1.89	0.41
3:C:682:GLN:O	3:C:682:GLN:CG	2.69	0.41
3:C:909:LEU:HD12	3:C:961:LYS:CD	2.50	0.40
1:A:81:ILE:HD11	3:C:65:PHE:CD1	2.55	0.40
3:C:912:VAL:HG23	3:C:961:LYS:CD	2.52	0.40
3:C:952:PHE:HE2	3:C:1029:LYS:HD2	1.86	0.40
1:A:105:HIS:O	1:A:109:VAL:HG22	2.22	0.40
2:B:128:ARG:HG3	2:B:133:LYS:O	2.21	0.40
3:C:225:PRO:HG2	3:C:228:TYR:CE1	2.57	0.40
1:A:92:VAL:HG22	1:A:122:ASN:O	2.21	0.40
3:C:556:MET:HA	3:C:559:VAL:HG22	2.02	0.40

There are no symmetry-related clashes.

5.3 Torsion angles [i](#)

5.3.1 Protein backbone [i](#)

In the following table, the Percentiles column shows the percent Ramachandran outliers of the chain as a percentile score with respect to all X-ray entries followed by that with respect to entries of similar resolution.

The Analysed column shows the number of residues for which the backbone conformation was analysed, and the total number of residues.

Mol	Chain	Analysed	Favoured	Allowed	Outliers	Percentiles	
1	A	199/216 (92%)	190 (96%)	7 (4%)	2 (1%)	15	42
2	B	119/140 (85%)	108 (91%)	8 (7%)	3 (2%)	5	18
3	C	984/1024 (96%)	953 (97%)	24 (2%)	7 (1%)	22	51
4	D	14/16 (88%)	12 (86%)	1 (7%)	1 (7%)	1	2
All	All	1316/1396 (94%)	1263 (96%)	40 (3%)	13 (1%)	15	42

All (13) Ramachandran outliers are listed below:

Mol	Chain	Res	Type
3	C	686	ASN
3	C	687	PRO
3	C	688	THR
2	B	100	ALA
2	B	168	GLU
3	C	223	TRP
3	C	683	SER
2	B	99	ASP
3	C	681	GLU
1	A	76	ARG
3	C	93	PHE
1	A	185	PRO
4	D	19	ASP

5.3.2 Protein sidechains [i](#)

In the following table, the Percentiles column shows the percent sidechain outliers of the chain as a percentile score with respect to all X-ray entries followed by that with respect to entries of similar resolution.

The Analysed column shows the number of residues for which the sidechain conformation was analysed, and the total number of residues.

Mol	Chain	Analysed	Rotameric	Outliers	Percentiles	
1	A	172/185 (93%)	167 (97%)	5 (3%)	42	74
2	B	100/121 (83%)	97 (97%)	3 (3%)	41	73
3	C	899/933 (96%)	888 (99%)	11 (1%)	71	91
4	D	13/13 (100%)	12 (92%)	1 (8%)	13	34
All	All	1184/1252 (95%)	1164 (98%)	20 (2%)	60	86

All (20) residues with a non-rotameric sidechain are listed below:

Mol	Chain	Res	Type
1	A	39	TYR
1	A	157	PHE
1	A	199	HIS
1	A	200	ASP
1	A	215	ASP
2	B	99	ASP
2	B	166	GLU
2	B	189	GLU
3	C	35	GLN
3	C	62	GLN
3	C	93	PHE
3	C	100	SER
3	C	104	ASP
3	C	207	SER
3	C	291	MET
3	C	607	LYS
3	C	628	ASP
3	C	684	THR
3	C	940	PHE
4	D	19	ASP

Sometimes sidechains can be flipped to improve hydrogen bonding and reduce clashes. All (1) such sidechains are listed below:

Mol	Chain	Res	Type
1	A	62	ASN

5.3.3 RNA

There are no RNA molecules in this entry.

5.4 Non-standard residues in protein, DNA, RNA chains [i](#)

There are no non-standard protein/DNA/RNA residues in this entry.

5.5 Carbohydrates [i](#)

There are no monosaccharides in this entry.

5.6 Ligand geometry [i](#)

Of 4 ligands modelled in this entry, 1 is monoatomic - leaving 3 for Mogul analysis.

In the following table, the Counts columns list the number of bonds (or angles) for which Mogul statistics could be retrieved, the number of bonds (or angles) that are observed in the model and the number of bonds (or angles) that are defined in the Chemical Component Dictionary. The Link column lists molecule types, if any, to which the group is linked. The Z score for a bond length (or angle) is the number of standard deviations the observed value is removed from the expected value. A bond length (or angle) with $|Z| > 2$ is considered an outlier worth inspection. RMSZ is the root-mean-square of all Z scores of the bond lengths (or angles).

Mol	Type	Chain	Res	Link	Bond lengths			Bond angles		
					Counts	RMSZ	# Z > 2	Counts	RMSZ	# Z > 2
5	GNP	A	301	6	29,34,34	5.07	16 (55%)	33,54,54	1.84	8 (24%)
7	GOL	C	1101	-	5,5,5	0.38	0	5,5,5	0.30	0
7	GOL	A	303	-	5,5,5	0.37	0	5,5,5	0.24	0

In the following table, the Chirals column lists the number of chiral outliers, the number of chiral centers analysed, the number of these observed in the model and the number defined in the Chemical Component Dictionary. Similar counts are reported in the Torsion and Rings columns. '-' means no outliers of that kind were identified.

Mol	Type	Chain	Res	Link	Chirals	Torsions	Rings
5	GNP	A	301	6	-	7/14/38/38	0/3/3/3
7	GOL	C	1101	-	-	2/4/4/4	-
7	GOL	A	303	-	-	2/4/4/4	-

All (16) bond length outliers are listed below:

Mol	Chain	Res	Type	Atoms	Z	Observed(Å)	Ideal(Å)
5	A	301	GNP	O4'-C1'	14.90	1.61	1.41
5	A	301	GNP	C2'-C1'	-14.87	1.31	1.53
5	A	301	GNP	C2-N2	10.53	1.54	1.33
5	A	301	GNP	PB-O3A	6.63	1.67	1.59

Continued on next page...

Continued from previous page...

Mol	Chain	Res	Type	Atoms	Z	Observed(Å)	Ideal(Å)
5	A	301	GNP	PB-O1B	5.53	1.54	1.46
5	A	301	GNP	O4'-C4'	-5.39	1.32	1.45
5	A	301	GNP	O2'-C2'	4.21	1.52	1.43
5	A	301	GNP	PG-O1G	3.90	1.52	1.46
5	A	301	GNP	O3'-C3'	-3.06	1.35	1.43
5	A	301	GNP	C5-C4	-2.77	1.33	1.40
5	A	301	GNP	PB-N3B	2.63	1.70	1.63
5	A	301	GNP	PA-O5'	2.40	1.69	1.59
5	A	301	GNP	O6-C6	-2.36	1.18	1.24
5	A	301	GNP	PG-N3B	2.27	1.69	1.63
5	A	301	GNP	C5-C6	-2.26	1.37	1.41
5	A	301	GNP	PB-O2B	-2.01	1.51	1.56

All (8) bond angle outliers are listed below:

Mol	Chain	Res	Type	Atoms	Z	Observed(°)	Ideal(°)
5	A	301	GNP	N3-C2-N1	-5.33	120.11	127.22
5	A	301	GNP	C2-N3-C4	4.01	119.93	115.36
5	A	301	GNP	C1'-N9-C4	-3.07	121.25	126.64
5	A	301	GNP	PB-O3A-PA	-2.98	122.13	132.62
5	A	301	GNP	N2-C2-N3	2.82	122.38	117.79
5	A	301	GNP	C2-N1-C6	2.60	120.06	115.93
5	A	301	GNP	C3'-C2'-C1'	2.58	104.86	100.98
5	A	301	GNP	C5-C6-N1	-2.55	119.94	123.43

There are no chirality outliers.

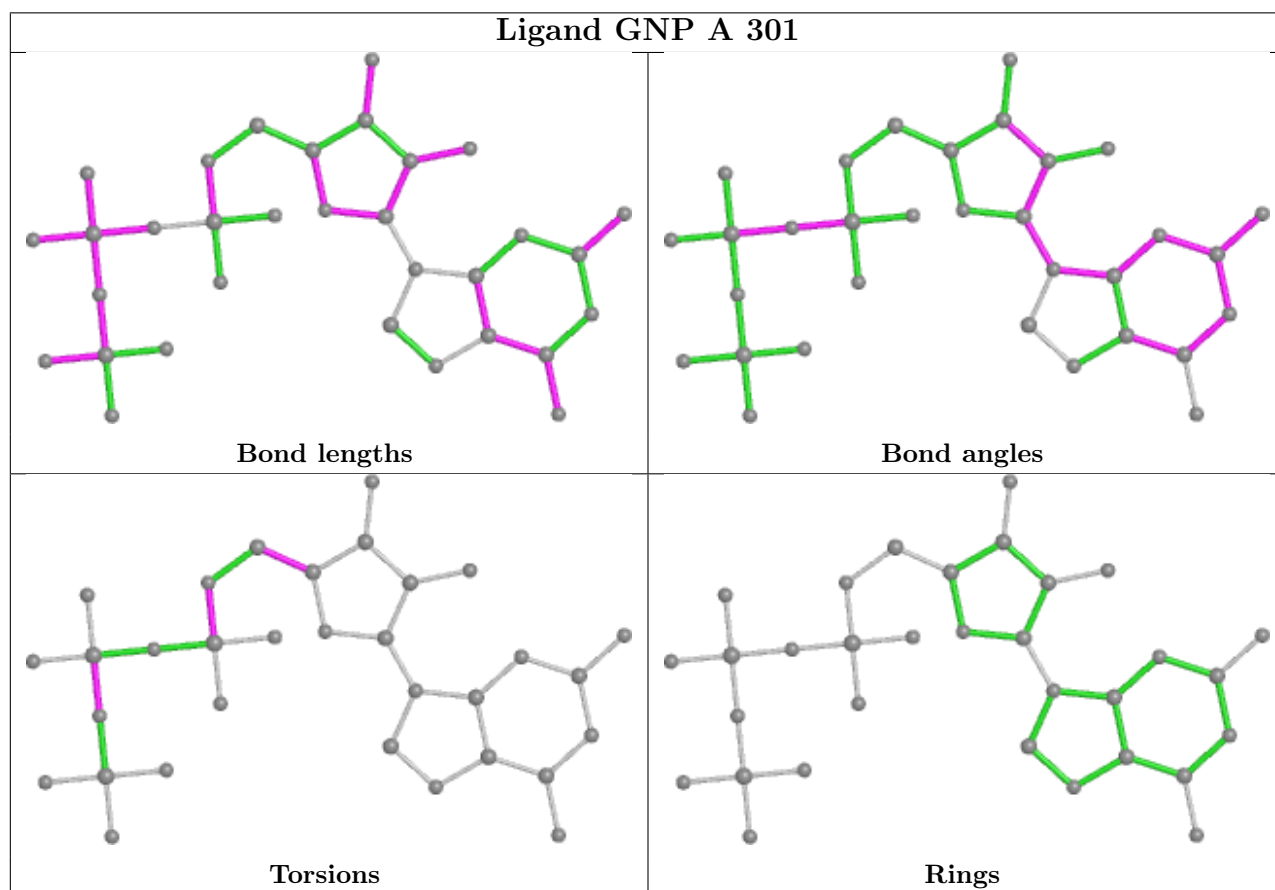
All (11) torsion outliers are listed below:

Mol	Chain	Res	Type	Atoms
5	A	301	GNP	PG-N3B-PB-O1B
5	A	301	GNP	PG-N3B-PB-O3A
5	A	301	GNP	C5'-O5'-PA-O3A
7	A	303	GOL	O1-C1-C2-C3
7	C	1101	GOL	O1-C1-C2-C3
7	A	303	GOL	O1-C1-C2-O2
5	A	301	GNP	O4'-C4'-C5'-O5'
7	C	1101	GOL	O1-C1-C2-O2
5	A	301	GNP	C3'-C4'-C5'-O5'
5	A	301	GNP	C5'-O5'-PA-O1A
5	A	301	GNP	C5'-O5'-PA-O2A

There are no ring outliers.

No monomer is involved in short contacts.

The following is a two-dimensional graphical depiction of Mogul quality analysis of bond lengths, bond angles, torsion angles, and ring geometry for all instances of the Ligand of Interest. In addition, ligands with molecular weight > 250 and outliers as shown on the validation Tables will also be included. For torsion angles, if less than 5% of the Mogul distribution of torsion angles is within 10 degrees of the torsion angle in question, then that torsion angle is considered an outlier. Any bond that is central to one or more torsion angles identified as an outlier by Mogul will be highlighted in the graph. For rings, the root-mean-square deviation (RMSD) between the ring in question and similar rings identified by Mogul is calculated over all ring torsion angles. If the average RMSD is greater than 60 degrees and the minimal RMSD between the ring in question and any Mogul-identified rings is also greater than 60 degrees, then that ring is considered an outlier. The outliers are highlighted in purple. The color gray indicates Mogul did not find sufficient equivalents in the CSD to analyse the geometry.



5.7 Other polymers [\(i\)](#)

There are no such residues in this entry.

5.8 Polymer linkage issues [\(i\)](#)

There are no chain breaks in this entry.

6 Fit of model and data [i](#)

6.1 Protein, DNA and RNA chains [i](#)

In the following table, the column labelled ‘#RSRZ> 2’ contains the number (and percentage) of RSRZ outliers, followed by percent RSRZ outliers for the chain as percentile scores relative to all X-ray entries and entries of similar resolution. The OWAB column contains the minimum, median, 95th percentile and maximum values of the occupancy-weighted average B-factor per residue. The column labelled ‘Q< 0.9’ lists the number of (and percentage) of residues with an average occupancy less than 0.9.

Mol	Chain	Analysed	<RSRZ>	#RSRZ>2	OWAB(Å ²)	Q<0.9
1	A	202/216 (93%)	-0.17	0 100 100	11, 33, 72, 100	0
2	B	120/140 (85%)	0.30	3 (2%) 57 47	33, 61, 96, 107	0
3	C	982/1024 (95%)	-0.19	1 (0%) 95 95	11, 38, 75, 111	0
4	D	16/16 (100%)	1.11	3 (18%) 1 1	51, 65, 91, 96	0
All	All	1320/1396 (94%)	-0.13	7 (0%) 91 88	11, 40, 81, 111	0

All (7) RSRZ outliers are listed below:

Mol	Chain	Res	Type	RSRZ
2	B	81	GLU	3.2
2	B	167	GLY	3.0
3	C	978	GLU	3.0
4	D	19	ASP	2.7
4	D	18	ILE	2.6
4	D	20	GLU	2.6
2	B	85	VAL	2.5

6.2 Non-standard residues in protein, DNA, RNA chains [i](#)

There are no non-standard protein/DNA/RNA residues in this entry.

6.3 Carbohydrates [i](#)

There are no monosaccharides in this entry.

6.4 Ligands [i](#)

LIGAND-RSR INFOmissingINFO

6.5 Other polymers [i](#)

There are no such residues in this entry.