



# Full wwPDB X-ray Structure Validation Report ⓘ

Oct 5, 2023 – 02:33 AM EDT

PDB ID : 6VV1  
Title : Crystal structure of Eis from Mycobacterium tuberculosis in complex with inhibitor SGT384  
Authors : Punetha, A.; Hou, C.; Ngo, H.X.; Garneau-Tsodikova, S.; Tsodikov, O.V.  
Deposited on : 2020-02-16  
Resolution : 2.45 Å (reported)

This is a Full wwPDB X-ray Structure Validation Report for a publicly released PDB entry.

We welcome your comments at [validation@mail.wwpdb.org](mailto:validation@mail.wwpdb.org)

A user guide is available at

<https://www.wwpdb.org/validation/2017/XrayValidationReportHelp>

with specific help available everywhere you see the ⓘ symbol.

The types of validation reports are described at

<http://www.wwpdb.org/validation/2017/FAQs#types>.

---

The following versions of software and data (see [references ⓘ](#)) were used in the production of this report:

MolProbity : **FAILED**  
Mogul : 1.8.5 (274361), CSD as541be (2020)  
Xtrriage (Phenix) : 1.13  
EDS : **FAILED**  
buster-report : 1.1.7 (2018)  
Percentile statistics : 20191225.v01 (using entries in the PDB archive December 25th 2019)  
Ideal geometry (proteins) : Engh & Huber (2001)  
Ideal geometry (DNA, RNA) : Parkinson et al. (1996)  
Validation Pipeline (wwPDB-VP) : 2.35.1

## 1 Overall quality at a glance

The following experimental techniques were used to determine the structure:

*X-RAY DIFFRACTION*

The reported resolution of this entry is 2.45 Å.

There are no overall percentile quality scores available for this entry.

MolProbity and EDS failed to run properly - the sequence quality summary graphics cannot be shown.

## 2 Entry composition [i](#)

There are 8 unique types of molecules in this entry. The entry contains 3378 atoms, of which 0 are hydrogens and 0 are deuteriums.

In the tables below, the ZeroOcc column contains the number of atoms modelled with zero occupancy, the AltConf column contains the number of residues with at least one atom in alternate conformation and the Trace column contains the number of residues modelled with at most 2 atoms.

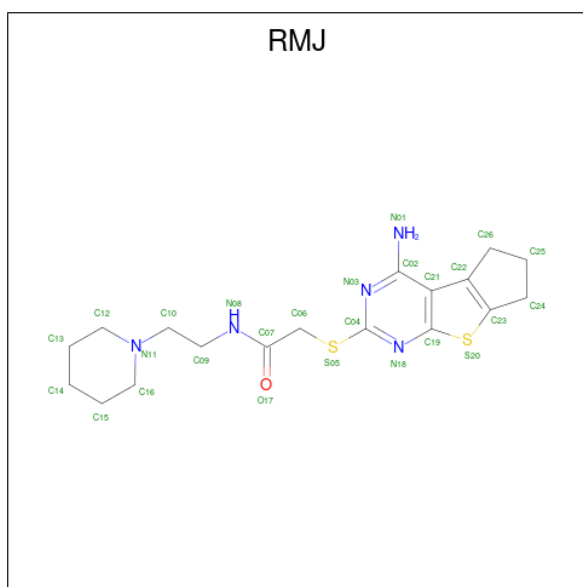
- Molecule 1 is a protein called N-acetyltransferase Eis.

Mol	Chain	Residues	Atoms					ZeroOcc	AltConf	Trace
			Total	C	N	O	S			
1	A	396	3047	1916	560	560	11	0	0	0

There are 21 discrepancies between the modelled and reference sequences:

Chain	Residue	Modelled	Actual	Comment	Reference
A	-19	MET	-	expression tag	UNP P9WFK7
A	-18	GLY	-	expression tag	UNP P9WFK7
A	-17	SER	-	expression tag	UNP P9WFK7
A	-16	SER	-	expression tag	UNP P9WFK7
A	-15	HIS	-	expression tag	UNP P9WFK7
A	-14	HIS	-	expression tag	UNP P9WFK7
A	-13	HIS	-	expression tag	UNP P9WFK7
A	-12	HIS	-	expression tag	UNP P9WFK7
A	-11	HIS	-	expression tag	UNP P9WFK7
A	-10	HIS	-	expression tag	UNP P9WFK7
A	-9	SER	-	expression tag	UNP P9WFK7
A	-8	SER	-	expression tag	UNP P9WFK7
A	-7	GLY	-	expression tag	UNP P9WFK7
A	-6	LEU	-	expression tag	UNP P9WFK7
A	-5	VAL	-	expression tag	UNP P9WFK7
A	-4	PRO	-	expression tag	UNP P9WFK7
A	-3	ARG	-	expression tag	UNP P9WFK7
A	-2	GLY	-	expression tag	UNP P9WFK7
A	-1	SER	-	expression tag	UNP P9WFK7
A	0	HIS	-	expression tag	UNP P9WFK7
A	204	ALA	CYS	engineered mutation	UNP P9WFK7

- Molecule 2 is 2-[(4-amino-6,7-dihydro-5H-cyclopenta[4,5]thieno[2,3-d]pyrimidin-2-yl)sulfanyl]-N-[2-(piperidin-1-yl)ethyl]acetamide (three-letter code: RMJ) (formula: C<sub>18</sub>H<sub>25</sub>N<sub>5</sub>OS<sub>2</sub>) (labeled as "Ligand of Interest" by depositor).



Mol	Chain	Residues	Atoms					ZeroOcc	AltConf
			Total	C	N	O	S		
2	A	1	26	18	5	1	2	0	0

- Molecule 3 is DI(HYDROXYETHYL)ETHER (three-letter code: PEG) (formula:  $C_4H_{10}O_3$ ).



Mol	Chain	Residues	Atoms			ZeroOcc	AltConf
			Total	C	O		
3	A	1	7	4	3	0	0
3	A	1	7	4	3	0	0

- Molecule 4 is GLYCEROL (three-letter code: GOL) (formula:  $C_3H_8O_3$ ).



Mol	Chain	Residues	Atoms	ZeroOcc	AltConf
4	A	1	Total C O 6 3 3	0	0
4	A	1	Total C O 6 3 3	0	0
4	A	1	Total C O 6 3 3	0	0

- Molecule 5 is SULFATE ION (three-letter code: SO4) (formula: O<sub>4</sub>S).



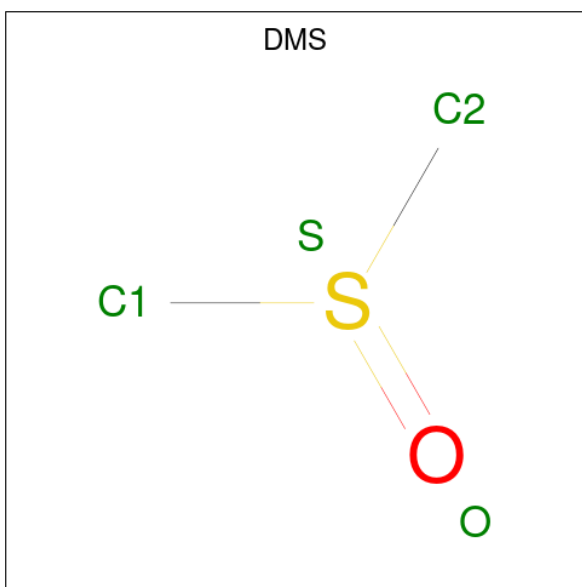
Mol	Chain	Residues	Atoms	ZeroOcc	AltConf
5	A	1	Total O S 5 4 1	0	0

*Continued on next page...*

Continued from previous page...

Mol	Chain	Residues	Atoms	ZeroOcc	AltConf
5	A	1	Total O S 5 4 1	0	0
5	A	1	Total O S 5 4 1	0	0

- Molecule 6 is DIMETHYL SULFOXIDE (three-letter code: DMS) (formula: C<sub>2</sub>H<sub>6</sub>OS).



Mol	Chain	Residues	Atoms	ZeroOcc	AltConf
6	A	1	Total C O S 4 2 1 1	0	0
6	A	1	Total C O S 4 2 1 1	0	0

- Molecule 7 is SODIUM ION (three-letter code: NA) (formula: Na).

Mol	Chain	Residues	Atoms	ZeroOcc	AltConf
7	A	1	Total Na 1 1	0	0

- Molecule 8 is water.

Mol	Chain	Residues	Atoms	ZeroOcc	AltConf
8	A	249	Total O 249 249	0	0

MolProbity and EDS failed to run properly - this section is therefore empty.

### 3 Data and refinement statistics

EDS failed to run properly - this section is therefore incomplete.

Property	Value	Source
Space group	H 3 2	Depositor
Cell constants a, b, c, $\alpha$ , $\beta$ , $\gamma$	175.33Å 175.33Å 124.23Å 90.00° 90.00° 120.00°	Depositor
Resolution (Å)	36.33 – 2.45	Depositor
% Data completeness (in resolution range)	97.1 (36.33-2.45)	Depositor
$R_{merge}$	0.11	Depositor
$R_{sym}$	(Not available)	Depositor
$\langle I/\sigma(I) \rangle$ <sup>1</sup>	2.32 (at 2.45Å)	Xtriage
Refinement program	REFMAC 5.8.0238	Depositor
R, $R_{free}$	0.169 , 0.218	Depositor
Wilson B-factor (Å <sup>2</sup> )	40.5	Xtriage
Anisotropy	0.592	Xtriage
L-test for twinning <sup>2</sup>	$\langle  L  \rangle = 0.49$ , $\langle L^2 \rangle = 0.32$	Xtriage
Estimated twinning fraction	No twinning to report.	Xtriage
Total number of atoms	3378	wwPDB-VP
Average B, all atoms (Å <sup>2</sup> )	46.0	wwPDB-VP

Xtriage's analysis on translational NCS is as follows: *The largest off-origin peak in the Patterson function is 3.21% of the height of the origin peak. No significant pseudotranslation is detected.*

<sup>1</sup>Intensities estimated from amplitudes.

<sup>2</sup>Theoretical values of  $\langle |L| \rangle$ ,  $\langle L^2 \rangle$  for acentric reflections are 0.5, 0.333 respectively for untwinned datasets, and 0.375, 0.2 for perfectly twinned datasets.

## 4 Model quality [i](#)

### 4.1 Standard geometry [i](#)

MolProbity failed to run properly - this section is therefore empty.

### 4.2 Too-close contacts [i](#)

MolProbity failed to run properly - this section is therefore empty.

### 4.3 Torsion angles [i](#)

#### 4.3.1 Protein backbone [i](#)

MolProbity failed to run properly - this section is therefore empty.

#### 4.3.2 Protein sidechains [i](#)

MolProbity failed to run properly - this section is therefore empty.

#### 4.3.3 RNA [i](#)

MolProbity failed to run properly - this section is therefore empty.

### 4.4 Non-standard residues in protein, DNA, RNA chains [i](#)

There are no non-standard protein/DNA/RNA residues in this entry.

### 4.5 Carbohydrates [i](#)

There are no monosaccharides in this entry.

### 4.6 Ligand geometry [i](#)

Of 12 ligands modelled in this entry, 1 is monoatomic - leaving 11 for Mogul analysis.

In the following table, the Counts columns list the number of bonds (or angles) for which Mogul statistics could be retrieved, the number of bonds (or angles) that are observed in the model and the number of bonds (or angles) that are defined in the Chemical Component Dictionary. The Link column lists molecule types, if any, to which the group is linked. The Z score for a bond



length (or angle) is the number of standard deviations the observed value is removed from the expected value. A bond length (or angle) with  $|Z| > 2$  is considered an outlier worth inspection. RMSZ is the root-mean-square of all Z scores of the bond lengths (or angles).

Mol	Type	Chain	Res	Link	Bond lengths			Bond angles		
					Counts	RMSZ	# Z  > 2	Counts	RMSZ	# Z  > 2
5	SO4	A	506	-	4,4,4	0.36	0	6,6,6	0.07	0
2	RMJ	A	501	-	26,29,29	2.90	8 (30%)	26,40,40	2.28	10 (38%)
6	DMS	A	511	-	3,3,3	0.28	0	3,3,3	0.10	0
4	GOL	A	508	-	5,5,5	0.09	0	5,5,5	0.29	0
4	GOL	A	504	-	5,5,5	0.13	0	5,5,5	0.38	0
6	DMS	A	509	-	3,3,3	0.27	0	3,3,3	0.04	0
4	GOL	A	505	-	5,5,5	0.15	0	5,5,5	0.42	0
5	SO4	A	510	-	4,4,4	0.37	0	6,6,6	0.06	0
3	PEG	A	502	-	6,6,6	0.25	0	5,5,5	0.18	0
5	SO4	A	507	-	4,4,4	0.38	0	6,6,6	0.06	0
3	PEG	A	503	-	6,6,6	0.30	0	5,5,5	0.25	0

In the following table, the Chirals column lists the number of chiral outliers, the number of chiral centers analysed, the number of these observed in the model and the number defined in the Chemical Component Dictionary. Similar counts are reported in the Torsion and Rings columns. '-' means no outliers of that kind were identified.

Mol	Type	Chain	Res	Link	Chirals	Torsions	Rings
2	RMJ	A	501	-	-	6/11/25/25	0/4/4/4
4	GOL	A	508	-	-	0/4/4/4	-
4	GOL	A	504	-	-	2/4/4/4	-
4	GOL	A	505	-	-	2/4/4/4	-
3	PEG	A	502	-	-	2/4/4/4	-
3	PEG	A	503	-	-	3/4/4/4	-

All (8) bond length outliers are listed below:

Mol	Chain	Res	Type	Atoms	Z	Observed(Å)	Ideal(Å)
2	A	501	RMJ	C10-N11	-10.87	1.22	1.47
2	A	501	RMJ	C07-N08	5.78	1.46	1.33
2	A	501	RMJ	C22-C21	3.92	1.51	1.40
2	A	501	RMJ	C02-N01	3.10	1.45	1.34
2	A	501	RMJ	C04-S05	3.09	1.81	1.75
2	A	501	RMJ	C06-C07	2.76	1.54	1.51
2	A	501	RMJ	O17-C07	-2.19	1.18	1.23
2	A	501	RMJ	C19-C21	-2.00	1.39	1.42

All (10) bond angle outliers are listed below:

Mol	Chain	Res	Type	Atoms	Z	Observed(°)	Ideal(°)
2	A	501	RMJ	C06-S05-C04	7.00	110.66	101.63
2	A	501	RMJ	C13-C12-N11	4.25	118.14	111.33
2	A	501	RMJ	C24-C23-C22	-3.15	108.82	111.09
2	A	501	RMJ	C16-N11-C12	2.69	114.88	108.83
2	A	501	RMJ	C22-C21-C19	2.61	114.98	110.57
2	A	501	RMJ	N18-C04-N03	-2.60	122.19	126.98
2	A	501	RMJ	C15-C16-N11	2.30	115.02	111.33
2	A	501	RMJ	C21-C02-N03	-2.18	117.06	122.73
2	A	501	RMJ	O17-C07-N08	-2.10	119.05	123.01
2	A	501	RMJ	C14-C15-C16	2.06	115.17	111.19

There are no chirality outliers.

All (15) torsion outliers are listed below:

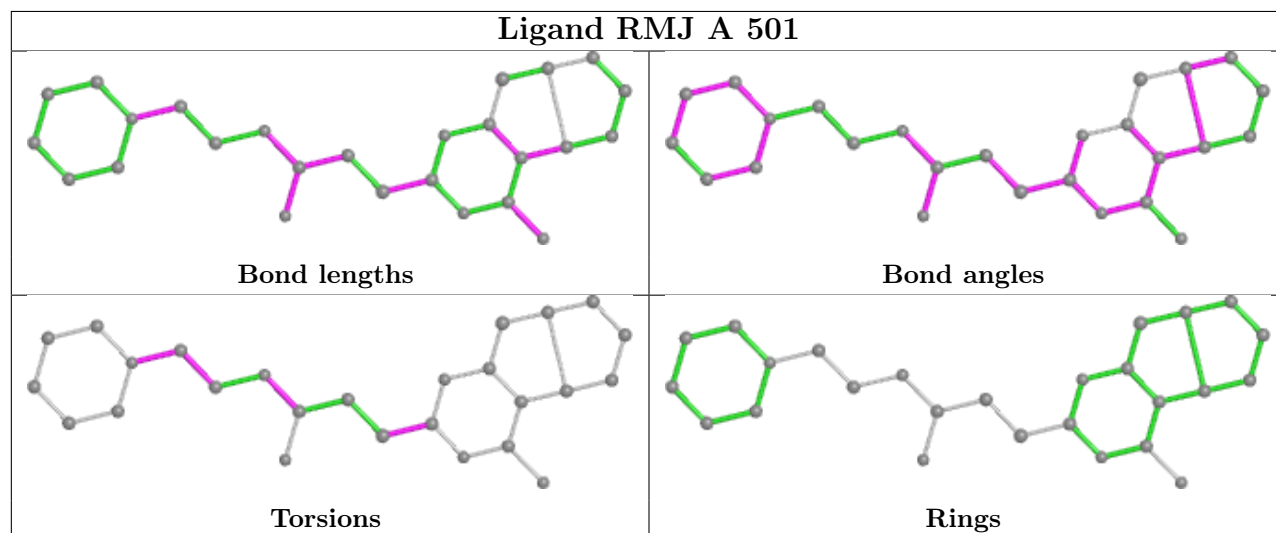
Mol	Chain	Res	Type	Atoms
2	A	501	RMJ	N03-C04-S05-C06
2	A	501	RMJ	N18-C04-S05-C06
2	A	501	RMJ	C06-C07-N08-C09
4	A	504	GOL	O1-C1-C2-C3
2	A	501	RMJ	O17-C07-N08-C09
3	A	502	PEG	O2-C3-C4-O4
4	A	505	GOL	O1-C1-C2-C3
3	A	503	PEG	O2-C3-C4-O4
4	A	504	GOL	O1-C1-C2-O2
4	A	505	GOL	O1-C1-C2-O2
3	A	502	PEG	O1-C1-C2-O2
3	A	503	PEG	O1-C1-C2-O2
3	A	503	PEG	C1-C2-O2-C3
2	A	501	RMJ	N08-C09-C10-N11
2	A	501	RMJ	C09-C10-N11-C12

There are no ring outliers.

No monomer is involved in short contacts.

The following is a two-dimensional graphical depiction of Mogul quality analysis of bond lengths, bond angles, torsion angles, and ring geometry for all instances of the Ligand of Interest. In addition, ligands with molecular weight > 250 and outliers as shown on the validation Tables will also be included. For torsion angles, if less than 5% of the Mogul distribution of torsion angles is within 10 degrees of the torsion angle in question, then that torsion angle is considered an outlier. Any bond that is central to one or more torsion angles identified as an outlier by Mogul will be highlighted in the graph. For rings, the root-mean-square deviation (RMSD) between the ring

in question and similar rings identified by Mogul is calculated over all ring torsion angles. If the average RMSD is greater than 60 degrees and the minimal RMSD between the ring in question and any Mogul-identified rings is also greater than 60 degrees, then that ring is considered an outlier. The outliers are highlighted in purple. The color gray indicates Mogul did not find sufficient equivalents in the CSD to analyse the geometry.



#### 4.7 Other polymers [i](#)

There are no such residues in this entry.

#### 4.8 Polymer linkage issues [i](#)

There are no chain breaks in this entry.

## 5 Fit of model and data

### 5.1 Protein, DNA and RNA chains

EDS failed to run properly - this section is therefore empty.

### 5.2 Non-standard residues in protein, DNA, RNA chains

EDS failed to run properly - this section is therefore empty.

### 5.3 Carbohydrates

EDS failed to run properly - this section is therefore empty.

### 5.4 Ligands

EDS failed to run properly - this section is therefore empty.

### 5.5 Other polymers

EDS failed to run properly - this section is therefore empty.