



Full wwPDB X-ray Structure Validation Report ⓘ

Oct 9, 2023 – 02:13 PM EDT

PDB ID : 7U9S
Title : Crystal structure of human D-amino acid oxidase in complex with inhibitor
Authors : Skene, R.J.; Bell, J.A.
Deposited on : 2022-03-11
Resolution : 2.10 Å(reported)

This is a Full wwPDB X-ray Structure Validation Report for a publicly released PDB entry.

We welcome your comments at validation@mail.wwpdb.org

A user guide is available at

<https://www.wwpdb.org/validation/2017/XrayValidationReportHelp>

with specific help available everywhere you see the ⓘ symbol.

The types of validation reports are described at

<http://www.wwpdb.org/validation/2017/FAQs#types>.

The following versions of software and data (see [references ⓘ](#)) were used in the production of this report:

MolProbity : 4.02b-467
Mogul : 1.8.5 (274361), CSD as541be (2020)
Xtriage (Phenix) : 1.13
EDS : 2.35.1
buster-report : 1.1.7 (2018)
Percentile statistics : 20191225.v01 (using entries in the PDB archive December 25th 2019)
Refmac : 5.8.0158
CCP4 : 7.0.044 (Gargrove)
Ideal geometry (proteins) : Engh & Huber (2001)
Ideal geometry (DNA, RNA) : Parkinson et al. (1996)
Validation Pipeline (wwPDB-VP) : 2.35.1

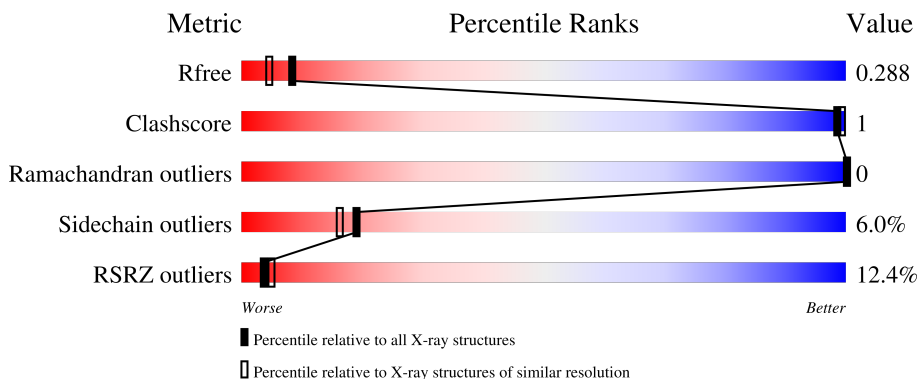
1 Overall quality at a glance

The following experimental techniques were used to determine the structure:

X-RAY DIFFRACTION

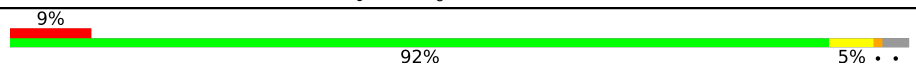
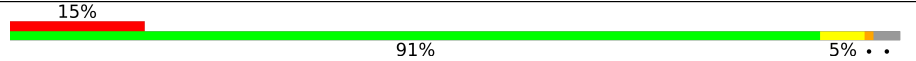
The reported resolution of this entry is 2.10 Å.

Percentile scores (ranging between 0-100) for global validation metrics of the entry are shown in the following graphic. The table shows the number of entries on which the scores are based.



Metric	Whole archive (#Entries)	Similar resolution (#Entries, resolution range(Å))
R_{free}	130704	5197 (2.10-2.10)
Clashscore	141614	5710 (2.10-2.10)
Ramachandran outliers	138981	5647 (2.10-2.10)
Sidechain outliers	138945	5648 (2.10-2.10)
RSRZ outliers	127900	5083 (2.10-2.10)

The table below summarises the geometric issues observed across the polymeric chains and their fit to the electron density. The red, orange, yellow and green segments of the lower bar indicate the fraction of residues that contain outliers for ≥ 3 , 2, 1 and 0 types of geometric quality criteria respectively. A grey segment represents the fraction of residues that are not modelled. The numeric value for each fraction is indicated below the corresponding segment, with a dot representing fractions $\leq 5\%$. The upper red bar (where present) indicates the fraction of residues that have poor fit to the electron density. The numeric value is given above the bar.

Mol	Chain	Length	Quality of chain
1	A	347	
1	B	347	

2 Entry composition i

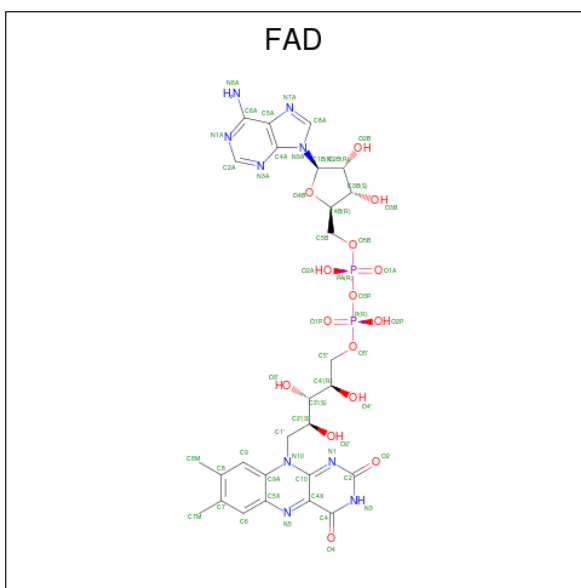
There are 4 unique types of molecules in this entry. The entry contains 11546 atoms, of which 5767 are hydrogens and 0 are deuteriums.

In the tables below, the ZeroOcc column contains the number of atoms modelled with zero occupancy, the AltConf column contains the number of residues with at least one atom in alternate conformation and the Trace column contains the number of residues modelled with at most 2 atoms.

- Molecule 1 is a protein called D-amino-acid oxidase.

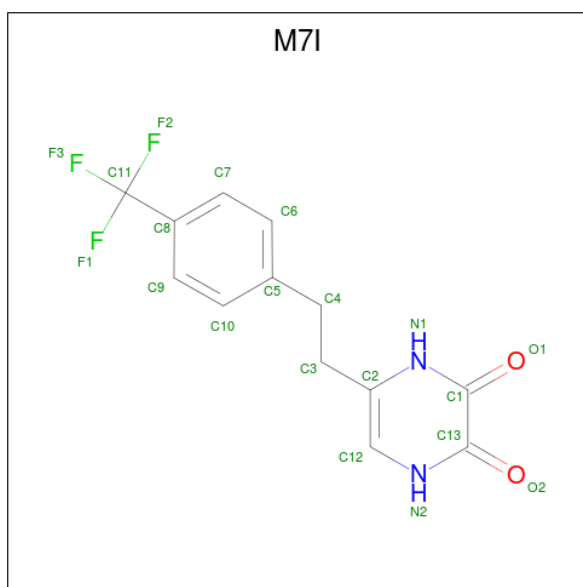
Mol	Chain	Residues	Atoms						ZeroOcc	AltConf	Trace
			Total	C	H	N	O	S			
1	A	338	Total	C	H	N	O	S	0	6	0
			5460	1765	2709	481	496	9			
1	B	338	Total	C	H	N	O	S	0	6	0
			5451	1764	2704	478	496	9			

- Molecule 2 is FLAVIN-ADENINE DINUCLEOTIDE (three-letter code: FAD) (formula: $C_{27}H_{33}N_9O_{15}P_2$).



Mol	Chain	Residues	Atoms						ZeroOcc	AltConf
			Total	C	H	N	O	P		
2	A	1	Total	C	H	N	O	P	0	0
			85	27	32	9	15	2		
2	B	1	Total	C	H	N	O	P	0	0
			85	27	32	9	15	2		

- Molecule 3 is 5-{2-[4-(trifluoromethyl)phenyl]ethyl}-1,4-dihydropyrazine-2,3-dione (three-letter code: M7I) (formula: $C_{13}H_{11}F_3N_2O_2$) (labeled as "Ligand of Interest" by depositor).



Mol	Chain	Residues	Atoms					ZeroOcc	AltConf	
			Total	C	F	H	N			O
3	A	1	30	13	3	10	2	2	0	0
3	B	1	30	13	3	10	2	2	0	0

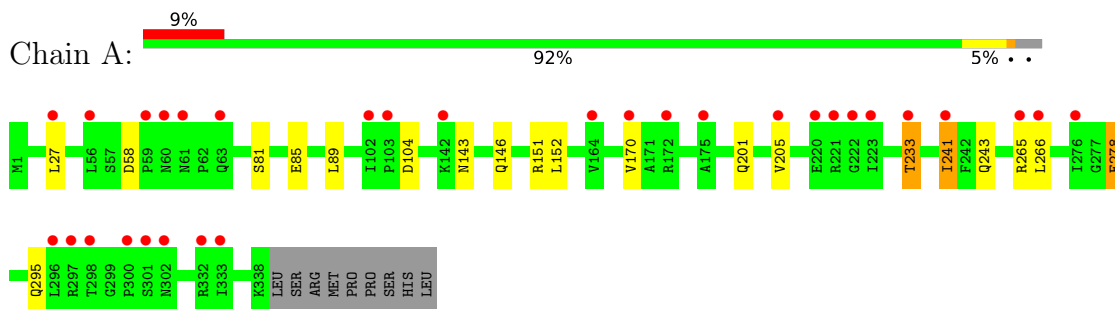
- Molecule 4 is water.

Mol	Chain	Residues	Atoms			ZeroOcc	AltConf
			Total	H	O		
4	A	81	243	162	81	0	0
4	B	54	162	108	54	0	0

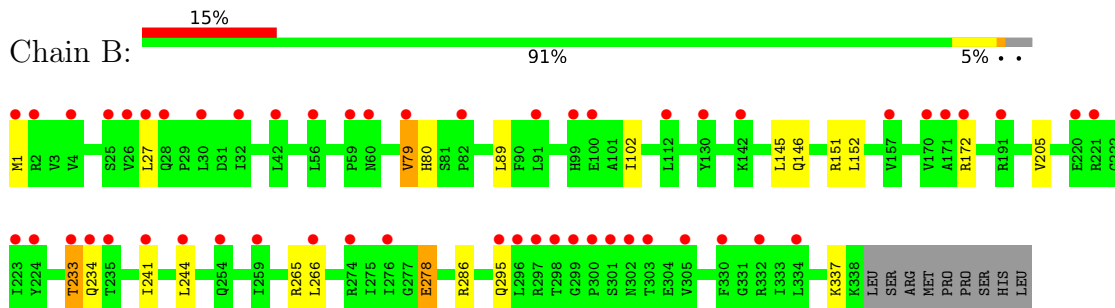
3 Residue-property plots [i](#)

These plots are drawn for all protein, RNA, DNA and oligosaccharide chains in the entry. The first graphic for a chain summarises the proportions of the various outlier classes displayed in the second graphic. The second graphic shows the sequence view annotated by issues in geometry and electron density. Residues are color-coded according to the number of geometric quality criteria for which they contain at least one outlier: green = 0, yellow = 1, orange = 2 and red = 3 or more. A red dot above a residue indicates a poor fit to the electron density ($RSRZ > 2$). Stretches of 2 or more consecutive residues without any outlier are shown as a green connector. Residues present in the sample, but not in the model, are shown in grey.

- Molecule 1: D-amino-acid oxidase



- Molecule 1: D-amino-acid oxidase



4 Data and refinement statistics

Property	Value	Source
Space group	P 21 21 2	Depositor
Cell constants a, b, c, α , β , γ	123.09Å 73.16Å 80.19Å 90.00° 90.00° 90.00°	Depositor
Resolution (Å)	48.82 – 2.10 49.48 – 2.10	Depositor EDS
% Data completeness (in resolution range)	100.0 (48.82-2.10) 100.0 (49.48-2.10)	Depositor EDS
R_{merge}	0.15	Depositor
R_{sym}	(Not available)	Depositor
$\langle I/\sigma(I) \rangle$ ¹	1.37 (at 2.10Å)	Xtrriage
Refinement program	PRIME-X	Depositor
R, R_{free}	0.257 , 0.293 0.253 , 0.288	Depositor DCC
R_{free} test set	2181 reflections (5.07%)	wwPDB-VP
Wilson B-factor (Å ²)	37.1	Xtrriage
Anisotropy	0.347	Xtrriage
Bulk solvent k_{sol} (e/Å ³), B_{sol} (Å ²)	0.40 , 48.4	EDS
L-test for twinning ²	$\langle L \rangle = 0.50$, $\langle L^2 \rangle = 0.34$	Xtrriage
Estimated twinning fraction	No twinning to report.	Xtrriage
F_o, F_c correlation	0.93	EDS
Total number of atoms	11546	wwPDB-VP
Average B, all atoms (Å ²)	44.0	wwPDB-VP

Xtrriage's analysis on translational NCS is as follows: *The largest off-origin peak in the Patterson function is 4.86% of the height of the origin peak. No significant pseudotranslation is detected.*

¹Intensities estimated from amplitudes.

²Theoretical values of $\langle |L| \rangle$, $\langle L^2 \rangle$ for acentric reflections are 0.5, 0.333 respectively for untwinned datasets, and 0.375, 0.2 for perfectly twinned datasets.

5 Model quality [i](#)

5.1 Standard geometry [i](#)

Bond lengths and bond angles in the following residue types are not validated in this section: M7I, FAD

The Z score for a bond length (or angle) is the number of standard deviations the observed value is removed from the expected value. A bond length (or angle) with $|Z| > 5$ is considered an outlier worth inspection. RMSZ is the root-mean-square of all Z scores of the bond lengths (or angles).

Mol	Chain	Bond lengths		Bond angles	
		RMSZ	# Z >5	RMSZ	# Z >5
1	A	0.65	0/2846	1.02	10/3873 (0.3%)
1	B	0.66	0/2842	1.03	8/3869 (0.2%)
All	All	0.66	0/5688	1.02	18/7742 (0.2%)

There are no bond length outliers.

All (18) bond angle outliers are listed below:

Mol	Chain	Res	Type	Atoms	Z	Observed(°)	Ideal(°)
1	B	233[A]	THR	CA-CB-CG2	8.76	124.67	112.40
1	B	233[B]	THR	CA-CB-CG2	8.76	124.67	112.40
1	A	233[A]	THR	CA-CB-CG2	7.71	123.19	112.40
1	A	233[B]	THR	CA-CB-CG2	7.71	123.19	112.40
1	A	278[A]	GLU	CA-CB-CG	6.25	127.14	113.40
1	A	278[B]	GLU	CA-CB-CG	6.25	127.14	113.40
1	A	81[A]	SER	N-CA-CB	-5.94	101.59	110.50
1	A	81[B]	SER	N-CA-CB	-5.94	101.59	110.50
1	B	79[A]	VAL	CA-CB-CG2	5.89	119.74	110.90
1	B	79[B]	VAL	CA-CB-CG2	5.89	119.74	110.90
1	B	79[A]	VAL	CA-CB-CG1	5.55	119.23	110.90
1	B	79[B]	VAL	CA-CB-CG1	5.55	119.23	110.90
1	B	278[A]	GLU	CA-CB-CG	5.54	125.58	113.40
1	B	278[B]	GLU	CA-CB-CG	5.54	125.58	113.40
1	A	278[A]	GLU	CB-CA-C	5.53	121.46	110.40
1	A	278[B]	GLU	CB-CA-C	5.53	121.46	110.40
1	A	241[A]	ILE	CA-CB-CG2	5.35	121.59	110.90
1	A	241[B]	ILE	CA-CB-CG2	5.35	121.59	110.90

There are no chirality outliers.

There are no planarity outliers.

5.2 Too-close contacts [i](#)

In the following table, the Non-H and H(model) columns list the number of non-hydrogen atoms and hydrogen atoms in the chain respectively. The H(added) column lists the number of hydrogen atoms added and optimized by MolProbity. The Clashes column lists the number of clashes within the asymmetric unit, whereas Symm-Clashes lists symmetry-related clashes.

Mol	Chain	Non-H	H(model)	H(added)	Clashes	Symm-Clashes
1	A	2751	2709	2714	3	0
1	B	2747	2704	2710	2	0
2	A	53	32	31	0	0
2	B	53	32	31	1	0
3	A	20	10	0	0	0
3	B	20	10	0	0	0
4	A	81	162	0	0	0
4	B	54	108	0	0	0
All	All	5779	5767	5486	6	0

The all-atom clashscore is defined as the number of clashes found per 1000 atoms (including hydrogen atoms). The all-atom clashscore for this structure is 1.

All (6) close contacts within the same asymmetric unit are listed below, sorted by their clash magnitude.

Atom-1	Atom-2	Interatomic distance (Å)	Clash overlap (Å)
1:B:79[B]:VAL:HG12	1:B:89:LEU:HD22	1.89	0.55
1:A:241[B]:ILE:HD11	1:A:243:GLN:NE2	2.22	0.53
1:A:241[B]:ILE:HD11	1:A:243:GLN:CD	2.33	0.49
1:B:79[B]:VAL:HG23	1:B:80:HIS:N	2.29	0.47
1:A:201:GLN:H	1:A:241[B]:ILE:HG23	1.85	0.42
2:B:401:FAD:H9	2:B:401:FAD:H1'1	1.78	0.42

There are no symmetry-related clashes.

5.3 Torsion angles [i](#)

5.3.1 Protein backbone [i](#)

In the following table, the Percentiles column shows the percent Ramachandran outliers of the chain as a percentile score with respect to all X-ray entries followed by that with respect to entries of similar resolution.

The Analysed column shows the number of residues for which the backbone conformation was analysed, and the total number of residues.

Mol	Chain	Analysed	Favoured	Allowed	Outliers	Percentiles	
1	A	342/347 (99%)	332 (97%)	10 (3%)	0	100	100
1	B	342/347 (99%)	330 (96%)	12 (4%)	0	100	100
All	All	684/694 (99%)	662 (97%)	22 (3%)	0	100	100

There are no Ramachandran outliers to report.

5.3.2 Protein sidechains [i](#)

In the following table, the Percentiles column shows the percent sidechain outliers of the chain as a percentile score with respect to all X-ray entries followed by that with respect to entries of similar resolution.

The Analysed column shows the number of residues for which the sidechain conformation was analysed, and the total number of residues.

Mol	Chain	Analysed	Rotameric	Outliers	Percentiles	
1	A	296/299 (99%)	276 (93%)	20 (7%)	16	13
1	B	296/299 (99%)	273 (92%)	23 (8%)	12	9
All	All	592/598 (99%)	549 (93%)	43 (7%)	19	11

All (43) residues with a non-rotameric sidechain are listed below:

Mol	Chain	Res	Type
1	A	27	LEU
1	A	58	ASP
1	A	85	GLU
1	A	89	LEU
1	A	104	ASP
1	A	143	ASN
1	A	146[A]	GLN
1	A	146[B]	GLN
1	A	151	ARG
1	A	152	LEU
1	A	170	VAL
1	A	205	VAL
1	A	233[A]	THR
1	A	233[B]	THR
1	A	265[A]	ARG
1	A	265[B]	ARG
1	A	266	LEU
1	A	278[A]	GLU

Continued on next page...

Continued from previous page...

Mol	Chain	Res	Type
1	A	278[B]	GLU
1	A	295	GLN
1	B	1	MET
1	B	27	LEU
1	B	102	ILE
1	B	145	LEU
1	B	146[A]	GLN
1	B	146[B]	GLN
1	B	151	ARG
1	B	152	LEU
1	B	172	ARG
1	B	205	VAL
1	B	233[A]	THR
1	B	233[B]	THR
1	B	234	GLN
1	B	241[A]	ILE
1	B	241[B]	ILE
1	B	244	LEU
1	B	265	ARG
1	B	266	LEU
1	B	278[A]	GLU
1	B	278[B]	GLU
1	B	286	ARG
1	B	295	GLN
1	B	337	LYS

Sometimes sidechains can be flipped to improve hydrogen bonding and reduce clashes. All (3) such sidechains are listed below:

Mol	Chain	Res	Type
1	A	70	GLN
1	A	295	GLN
1	B	302	ASN

5.3.3 RNA [i](#)

There are no RNA molecules in this entry.

5.4 Non-standard residues in protein, DNA, RNA chains [i](#)

There are no non-standard protein/DNA/RNA residues in this entry.

5.5 Carbohydrates [i](#)

There are no monosaccharides in this entry.

5.6 Ligand geometry [i](#)

4 ligands are modelled in this entry.

In the following table, the Counts columns list the number of bonds (or angles) for which Mogul statistics could be retrieved, the number of bonds (or angles) that are observed in the model and the number of bonds (or angles) that are defined in the Chemical Component Dictionary. The Link column lists molecule types, if any, to which the group is linked. The Z score for a bond length (or angle) is the number of standard deviations the observed value is removed from the expected value. A bond length (or angle) with $|Z| > 2$ is considered an outlier worth inspection. RMSZ is the root-mean-square of all Z scores of the bond lengths (or angles).

Mol	Type	Chain	Res	Link	Bond lengths			Bond angles		
					Counts	RMSZ	# Z > 2	Counts	RMSZ	# Z > 2
3	M7I	B	402	-	21,21,21	1.46	3 (14%)	26,30,30	1.68	6 (23%)
2	FAD	B	401	-	53,58,58	1.01	2 (3%)	68,89,89	1.32	9 (13%)
2	FAD	A	401	-	53,58,58	0.97	2 (3%)	68,89,89	1.29	8 (11%)
3	M7I	A	402	-	21,21,21	1.46	3 (14%)	26,30,30	1.69	5 (19%)

In the following table, the Chirals column lists the number of chiral outliers, the number of chiral centers analysed, the number of these observed in the model and the number defined in the Chemical Component Dictionary. Similar counts are reported in the Torsion and Rings columns. '-' means no outliers of that kind were identified.

Mol	Type	Chain	Res	Link	Chirals	Torsions	Rings
3	M7I	B	402	-	-	1/11/11/11	0/2/2/2
2	FAD	B	401	-	-	2/30/50/50	0/6/6/6
2	FAD	A	401	-	-	1/30/50/50	0/6/6/6
3	M7I	A	402	-	-	1/11/11/11	0/2/2/2

All (10) bond length outliers are listed below:

Mol	Chain	Res	Type	Atoms	Z	Observed(Å)	Ideal(Å)
3	A	402	M7I	C12-C2	3.68	1.38	1.33
3	B	402	M7I	C12-C2	3.53	1.37	1.33
3	A	402	M7I	C1-C13	3.06	1.58	1.52
3	B	402	M7I	C1-C13	3.00	1.58	1.52
3	A	402	M7I	C13-N2	-2.22	1.34	1.39
3	B	402	M7I	C13-N2	-2.21	1.34	1.39

Continued on next page...

Continued from previous page...

Mol	Chain	Res	Type	Atoms	Z	Observed(Å)	Ideal(Å)
2	A	401	FAD	P-O5'	2.14	1.67	1.59
2	B	401	FAD	P-O5'	2.13	1.67	1.59
2	B	401	FAD	C8A-N7A	-2.10	1.31	1.34
2	A	401	FAD	C10-N1	-2.02	1.29	1.33

All (28) bond angle outliers are listed below:

Mol	Chain	Res	Type	Atoms	Z	Observed(°)	Ideal(°)
3	A	402	M7I	O1-C1-C13	-5.27	114.85	119.64
3	B	402	M7I	O1-C1-C13	-5.18	114.93	119.64
2	B	401	FAD	C10-N1-C2	3.61	124.12	116.90
2	A	401	FAD	C10-N1-C2	3.56	124.02	116.90
2	A	401	FAD	C1'-N10-C9A	-3.52	114.65	120.51
2	B	401	FAD	C1'-N10-C9A	-3.49	114.70	120.51
3	A	402	M7I	C3-C2-C12	-3.32	119.63	124.97
3	B	402	M7I	C3-C2-C12	-3.25	119.75	124.97
2	B	401	FAD	C4-C4X-N5	2.75	122.15	118.23
3	A	402	M7I	C12-N2-C13	-2.74	121.50	124.46
3	B	402	M7I	C12-N2-C13	-2.73	121.51	124.46
2	B	401	FAD	C5X-N5-C4X	2.69	122.54	118.07
2	A	401	FAD	C4-C4X-N5	2.63	121.98	118.23
2	A	401	FAD	O4'-C4'-C5'	-2.62	104.03	109.92
3	A	402	M7I	O1-C1-N1	2.55	125.00	120.12
3	B	402	M7I	O1-C1-N1	2.51	124.92	120.12
2	B	401	FAD	C9A-N10-C10	2.49	124.64	120.77
2	A	401	FAD	C5X-N5-C4X	2.48	122.20	118.07
2	A	401	FAD	C9A-N10-C10	2.46	124.60	120.77
2	B	401	FAD	C9A-C5X-N5	-2.43	119.79	122.43
2	A	401	FAD	C9A-C5X-N5	-2.39	119.84	122.43
2	B	401	FAD	O4'-C4'-C5'	-2.25	104.87	109.92
2	B	401	FAD	O4B-C1B-C2B	-2.24	103.65	106.93
3	B	402	M7I	O2-C13-N2	2.23	124.12	120.87
2	A	401	FAD	C5A-C6A-N6A	2.21	123.70	120.35
3	A	402	M7I	O2-C13-N2	2.20	124.07	120.87
3	B	402	M7I	F3-C11-C8	-2.10	108.32	112.93
2	B	401	FAD	C5A-C6A-N6A	2.08	123.52	120.35

There are no chirality outliers.

All (5) torsion outliers are listed below:

Mol	Chain	Res	Type	Atoms
3	A	402	M7I	C2-C3-C4-C5

Continued on next page...

Continued from previous page...

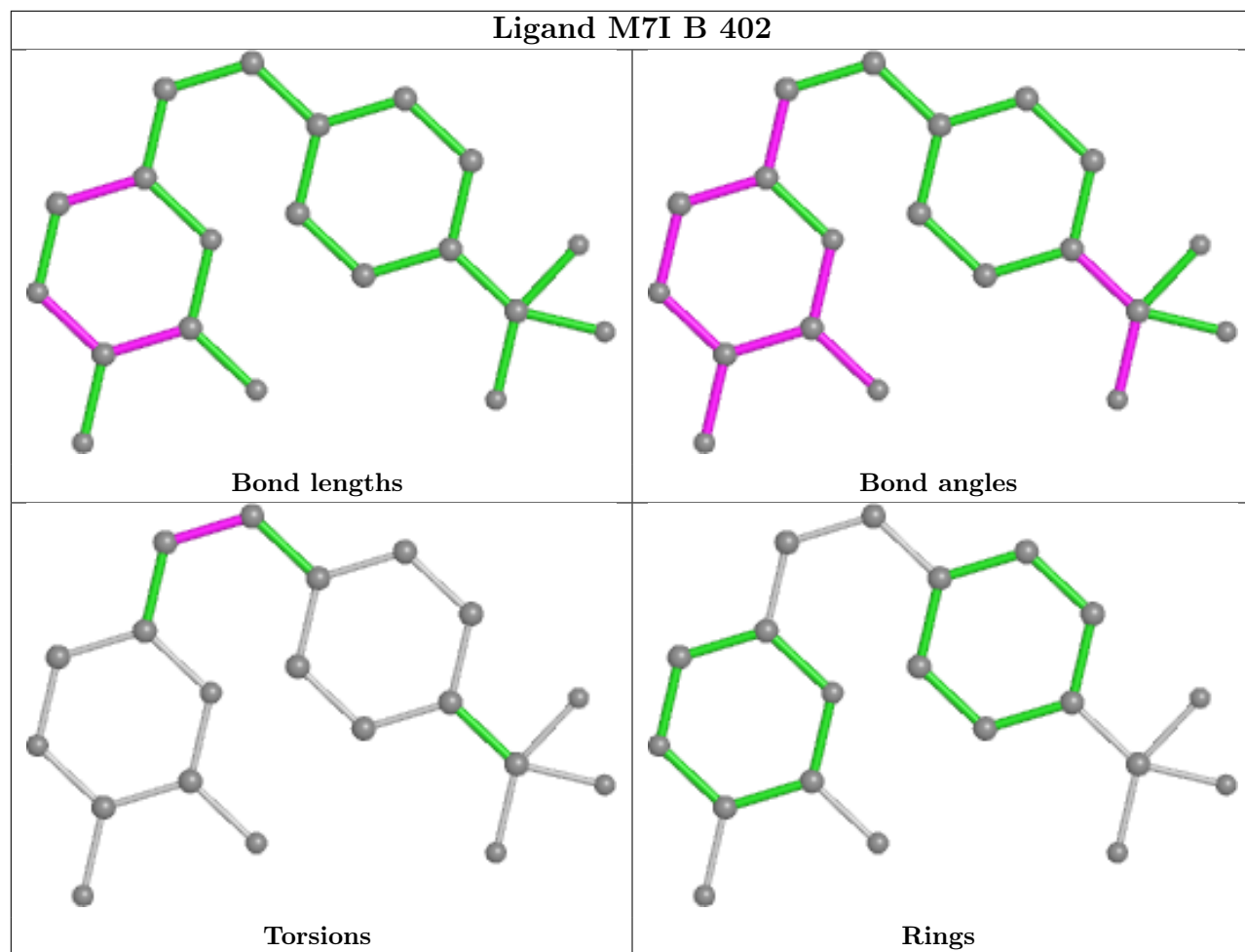
Mol	Chain	Res	Type	Atoms
3	B	402	M7I	C2-C3-C4-C5
2	B	401	FAD	O4B-C4B-C5B-O5B
2	A	401	FAD	O4B-C4B-C5B-O5B
2	B	401	FAD	PA-O3P-P-O2P

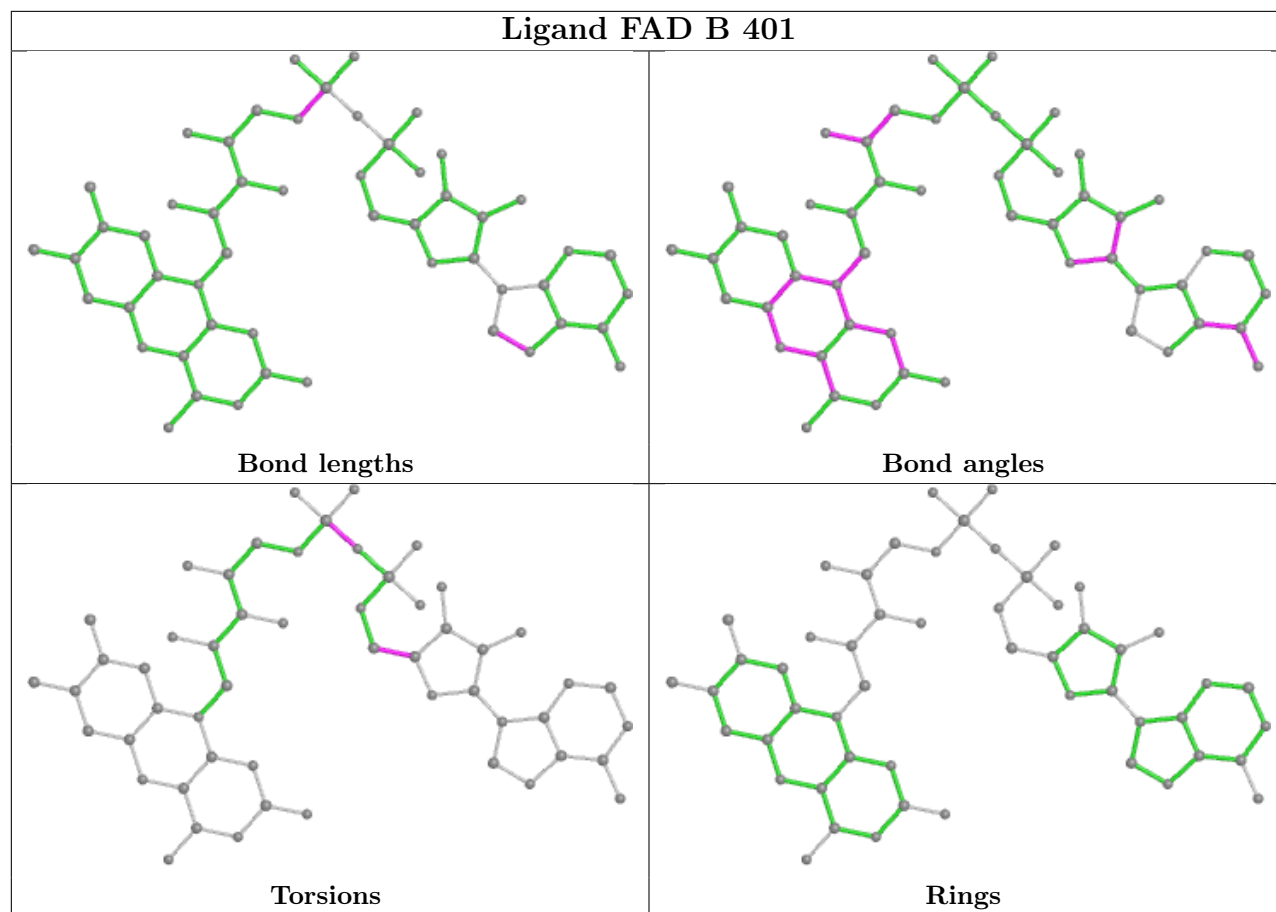
There are no ring outliers.

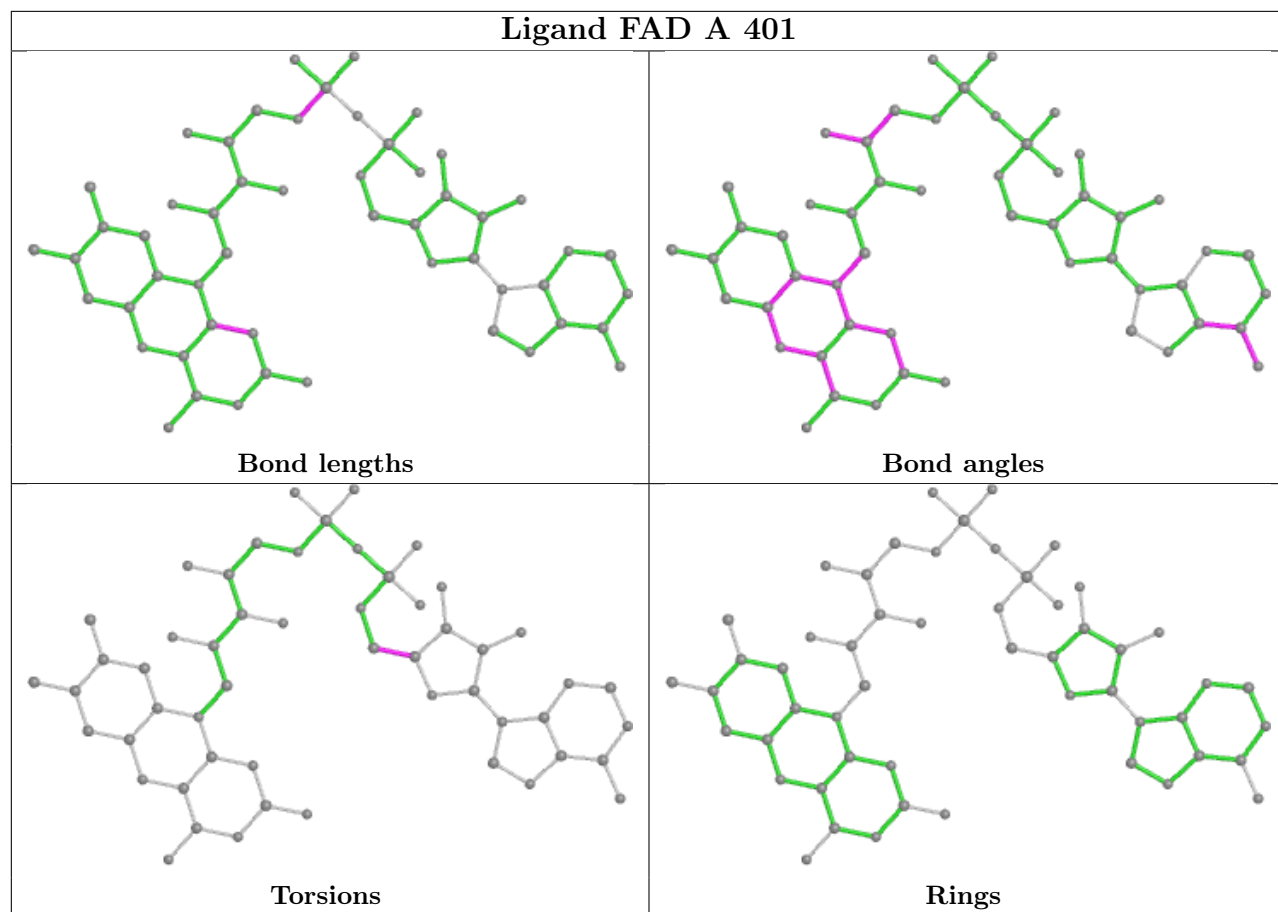
1 monomer is involved in 1 short contact:

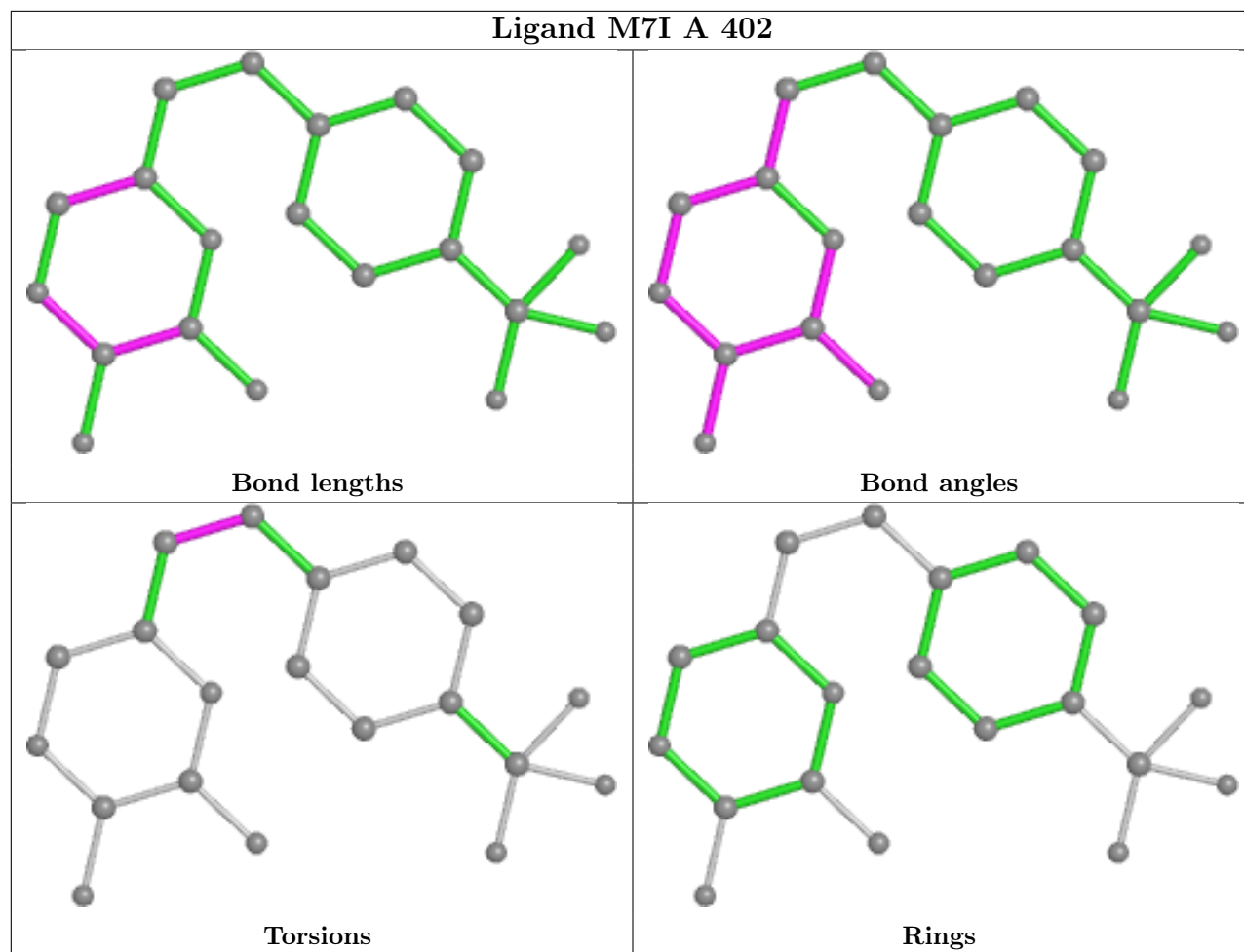
Mol	Chain	Res	Type	Clashes	Symm-Clashes
2	B	401	FAD	1	0

The following is a two-dimensional graphical depiction of Mogul quality analysis of bond lengths, bond angles, torsion angles, and ring geometry for all instances of the Ligand of Interest. In addition, ligands with molecular weight > 250 and outliers as shown on the validation Tables will also be included. For torsion angles, if less than 5% of the Mogul distribution of torsion angles is within 10 degrees of the torsion angle in question, then that torsion angle is considered an outlier. Any bond that is central to one or more torsion angles identified as an outlier by Mogul will be highlighted in the graph. For rings, the root-mean-square deviation (RMSD) between the ring in question and similar rings identified by Mogul is calculated over all ring torsion angles. If the average RMSD is greater than 60 degrees and the minimal RMSD between the ring in question and any Mogul-identified rings is also greater than 60 degrees, then that ring is considered an outlier. The outliers are highlighted in purple. The color gray indicates Mogul did not find sufficient equivalents in the CSD to analyse the geometry.









5.7 Other polymers [i](#)

There are no such residues in this entry.

5.8 Polymer linkage issues [i](#)

There are no chain breaks in this entry.

6 Fit of model and data

6.1 Protein, DNA and RNA chains

In the following table, the column labelled ‘#RSRZ > 2’ contains the number (and percentage) of RSRZ outliers, followed by percent RSRZ outliers for the chain as percentile scores relative to all X-ray entries and entries of similar resolution. The OWAB column contains the minimum, median, 95th percentile and maximum values of the occupancy-weighted average B-factor per residue. The column labelled ‘Q < 0.9’ lists the number of (and percentage) of residues with an average occupancy less than 0.9.

Mol	Chain	Analysed	<RSRZ>	#RSRZ>2	OWAB(Å ²)	Q<0.9
1	A	338/347 (97%)	0.82	31 (9%) 9 11	21, 34, 65, 89	0
1	B	338/347 (97%)	1.20	53 (15%) 2 2	26, 45, 80, 106	0
All	All	676/694 (97%)	1.01	84 (12%) 4 5	21, 40, 73, 106	0

All (84) RSRZ outliers are listed below:

Mol	Chain	Res	Type	RSRZ
1	B	27	LEU	10.5
1	B	297	ARG	8.2
1	A	297	ARG	6.6
1	B	1	MET	6.0
1	B	300	PRO	5.8
1	B	296	LEU	5.5
1	A	300	PRO	5.2
1	B	298	THR	5.1
1	B	301	SER	5.1
1	A	27	LEU	4.8
1	A	298	THR	4.7
1	B	130	TYR	4.7
1	A	60	ASN	4.7
1	B	56	LEU	4.5
1	B	2	ARG	4.5
1	B	100	GLU	4.5
1	B	295	GLN	4.4
1	B	299	GLY	4.3
1	B	59	PRO	3.9
1	B	305	VAL	3.8
1	B	302	ASN	3.7
1	B	28	GLN	3.7
1	B	303	THR	3.6
1	B	60	ASN	3.5

Continued on next page...

Continued from previous page...

Mol	Chain	Res	Type	RSRZ
1	B	79[A]	VAL	3.3
1	B	42	LEU	3.2
1	A	296	LEU	3.1
1	A	220	GLU	3.0
1	A	222	GLY	3.0
1	B	220	GLU	3.0
1	B	223	ILE	2.9
1	A	175	ALA	2.9
1	A	142	LYS	2.9
1	B	30	LEU	2.9
1	A	170	VAL	2.9
1	A	59	PRO	2.9
1	B	4	VAL	2.8
1	A	241[A]	ILE	2.8
1	B	172	ARG	2.8
1	B	32	ILE	2.7
1	A	221	ARG	2.7
1	B	82	PRO	2.7
1	B	274	ARG	2.7
1	A	102	ILE	2.6
1	B	334	LEU	2.6
1	A	333	ILE	2.6
1	B	191	ARG	2.5
1	B	235	THR	2.5
1	A	172	ARG	2.5
1	B	25	SER	2.5
1	B	142	LYS	2.5
1	B	276	ILE	2.4
1	B	244	LEU	2.4
1	B	221	ARG	2.4
1	B	157	VAL	2.4
1	A	233[A]	THR	2.4
1	A	301	SER	2.4
1	B	99	HIS	2.4
1	A	223	ILE	2.4
1	B	241[A]	ILE	2.4
1	A	302	ASN	2.3
1	A	205	VAL	2.3
1	B	259	ILE	2.3
1	A	63	GLN	2.3
1	B	266	LEU	2.2
1	A	332	ARG	2.2

Continued on next page...

Continued from previous page...

Mol	Chain	Res	Type	RSRZ
1	B	233[A]	THR	2.2
1	A	56	LEU	2.2
1	A	61	ASN	2.2
1	A	265[A]	ARG	2.2
1	A	103	PRO	2.2
1	A	266	LEU	2.1
1	B	170	VAL	2.1
1	B	26	VAL	2.1
1	B	234	GLN	2.1
1	B	330	PHE	2.1
1	B	112	LEU	2.1
1	B	254	GLN	2.1
1	B	224	TYR	2.1
1	B	332	ARG	2.0
1	A	164	VAL	2.0
1	B	171	ALA	2.0
1	B	91	LEU	2.0
1	A	276	ILE	2.0

6.2 Non-standard residues in protein, DNA, RNA chains [i](#)

There are no non-standard protein/DNA/RNA residues in this entry.

6.3 Carbohydrates [i](#)

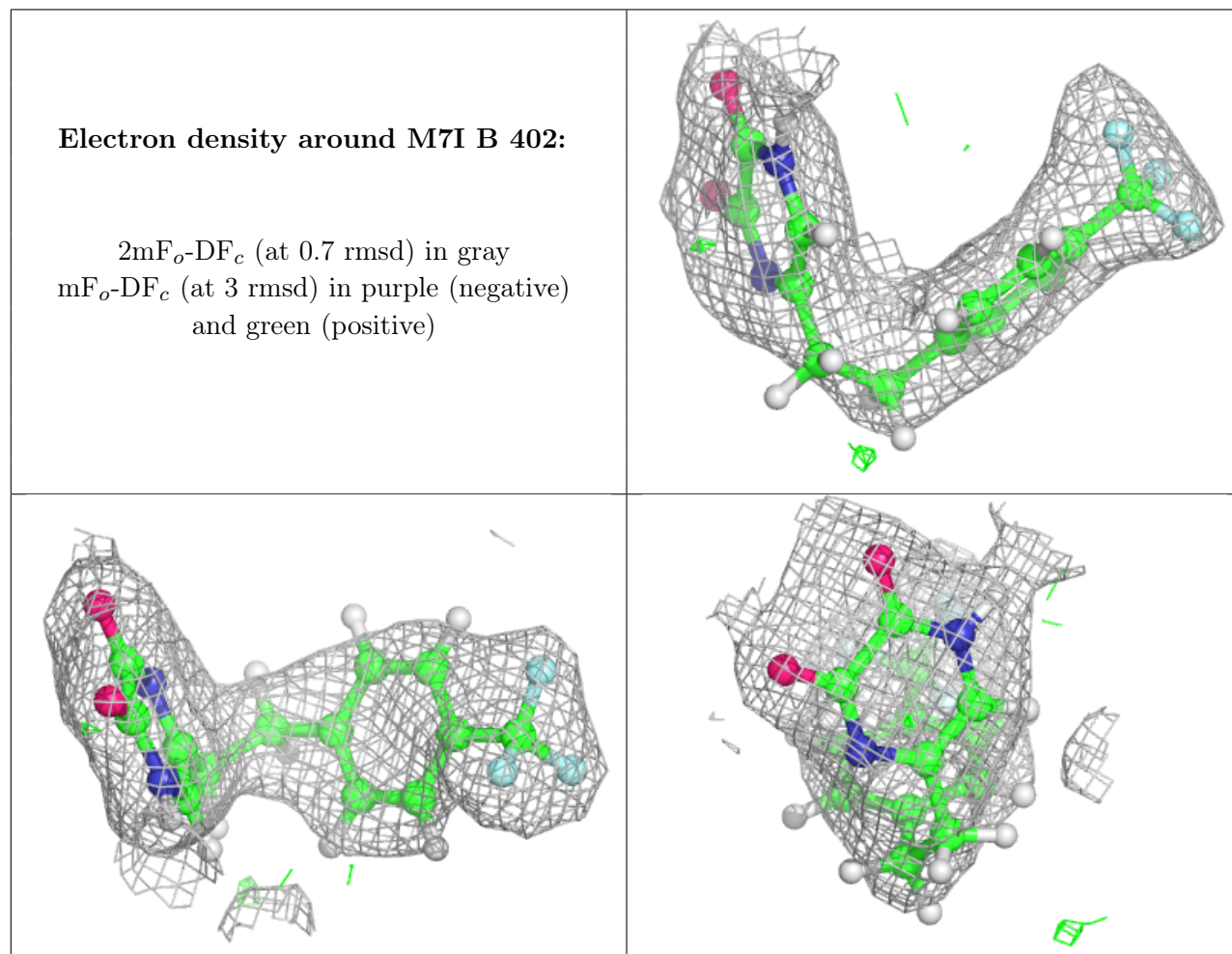
There are no monosaccharides in this entry.

6.4 Ligands [i](#)

In the following table, the Atoms column lists the number of modelled atoms in the group and the number defined in the chemical component dictionary. The B-factors column lists the minimum, median, 95th percentile and maximum values of B factors of atoms in the group. The column labelled 'Q< 0.9' lists the number of atoms with occupancy less than 0.9.

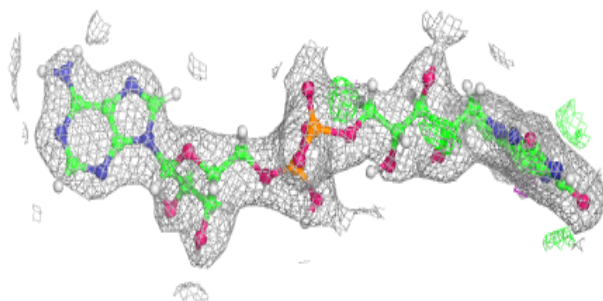
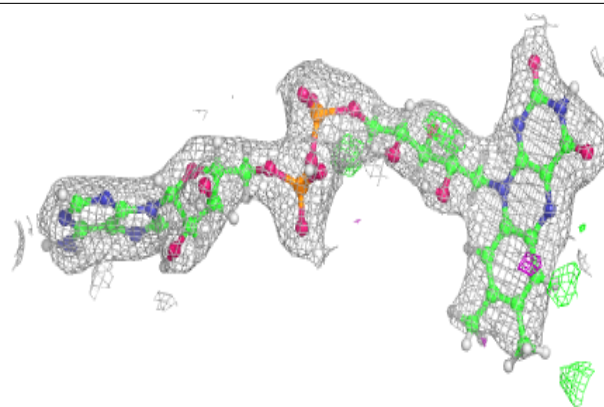
Mol	Type	Chain	Res	Atoms	RSCC	RSR	B-factors(Å ²)	Q<0.9
3	M7I	B	402	20/20	0.90	0.16	26,39,50,54	0
2	FAD	B	401	53/53	0.93	0.14	22,38,48,50	0
3	M7I	A	402	20/20	0.94	0.16	23,31,43,47	0
2	FAD	A	401	53/53	0.95	0.15	18,28,37,42	0

The following is a graphical depiction of the model fit to experimental electron density of all instances of the Ligand of Interest. In addition, ligands with molecular weight > 250 and outliers as shown on the geometry validation Tables will also be included. Each fit is shown from different orientation to approximate a three-dimensional view.



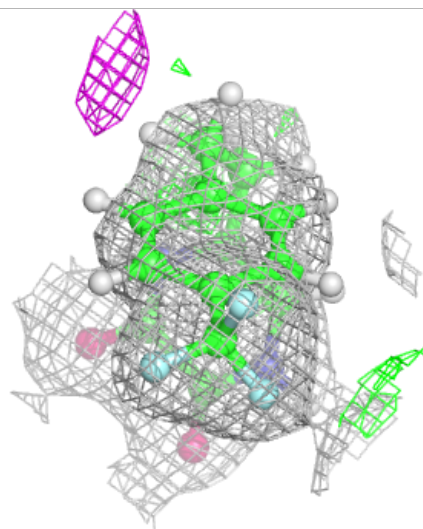
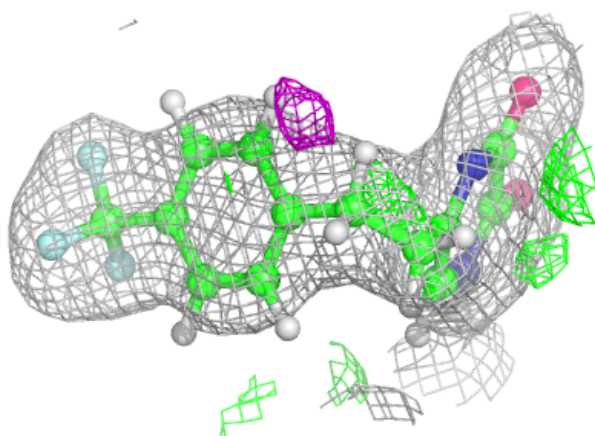
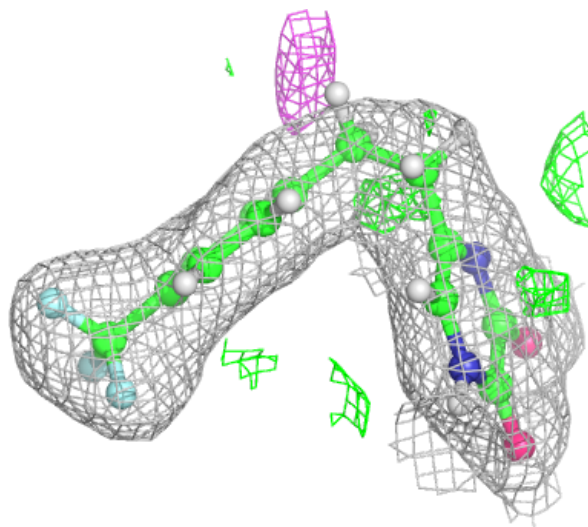
Electron density around FAD B 401:

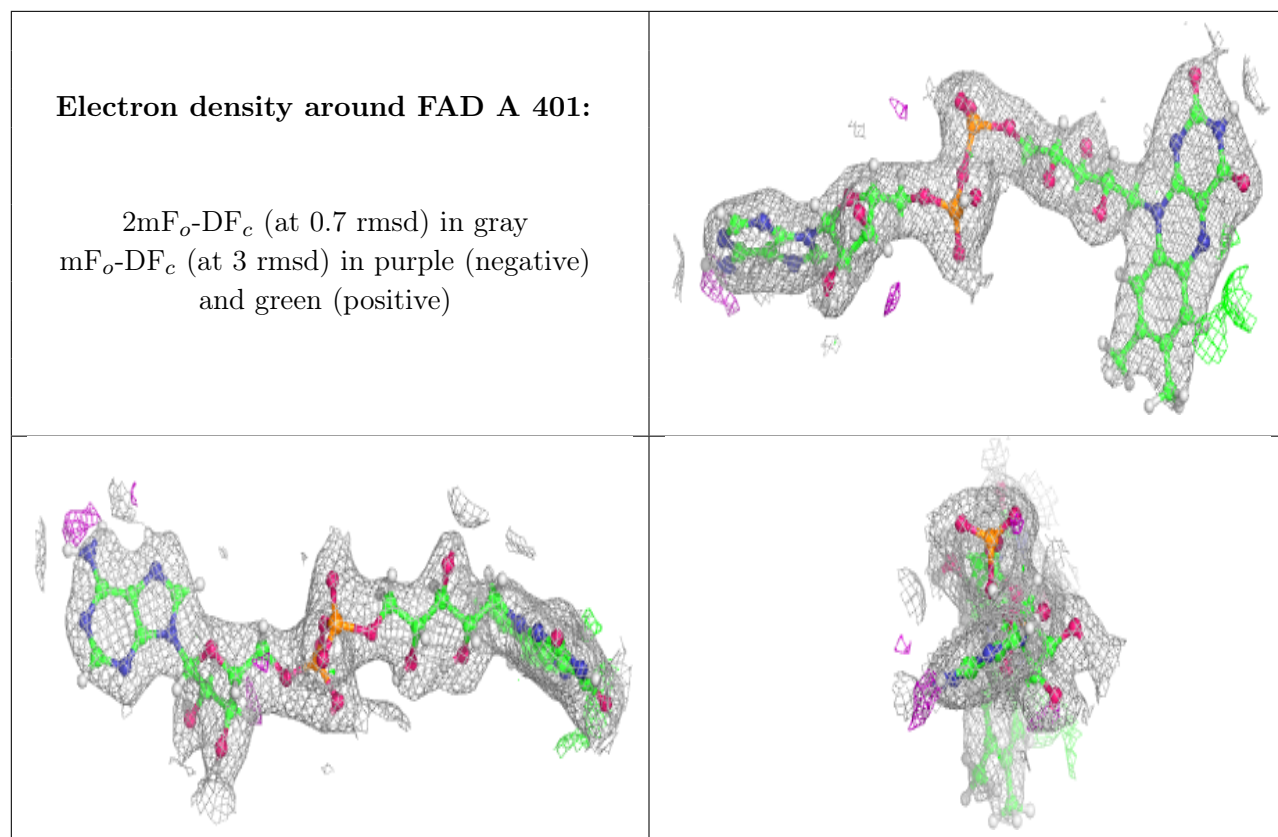
$2mF_o-DF_c$ (at 0.7 rmsd) in gray
 mF_o-DF_c (at 3 rmsd) in purple (negative)
and green (positive)



Electron density around M7I A 402:

$2mF_o-DF_c$ (at 0.7 rmsd) in gray
 mF_o-DF_c (at 3 rmsd) in purple (negative)
and green (positive)





6.5 Other polymers [i](#)

There are no such residues in this entry.