



Full wwPDB X-ray Structure Validation Report ⓘ

Sep 16, 2023 – 08:51 PM EDT

PDB ID : 4TN4
Title : Crystal structure of ternary complex of Plasmodium vivax SHMT with glycine and a novel pyrazolopyran 33G: (4S)-6-amino-4-(5-cyano-3'-fluorobiphenyl-3-yl)-4-cyclobutyl-3-methyl-2,4-dihydropyrano[2,3-c]pyrazole-5-carbonitrile
Authors : Chitnumsub, P.; Jaruwat, A.; Leartsakulpanich, U.; Witschel, M.C.
Deposited on : 2014-06-03
Resolution : 2.20 Å(reported)

This is a Full wwPDB X-ray Structure Validation Report for a publicly released PDB entry.

We welcome your comments at validation@mail.wwpdb.org

A user guide is available at

<https://www.wwpdb.org/validation/2017/XrayValidationReportHelp>

with specific help available everywhere you see the ⓘ symbol.

The types of validation reports are described at

<http://www.wwpdb.org/validation/2017/FAQs#types>.

The following versions of software and data (see [references ⓘ](#)) were used in the production of this report:

MolProbity : 4.02b-467
Mogul : 1.8.5 (274361), CSD as541be (2020)
Xtriage (Phenix) : 1.13
EDS : 2.35.1
buster-report : 1.1.7 (2018)
Percentile statistics : 20191225.v01 (using entries in the PDB archive December 25th 2019)
Refmac : 5.8.0158
CCP4 : 7.0.044 (Gargrove)
Ideal geometry (proteins) : Engh & Huber (2001)
Ideal geometry (DNA, RNA) : Parkinson et al. (1996)
Validation Pipeline (wwPDB-VP) : 2.35.1

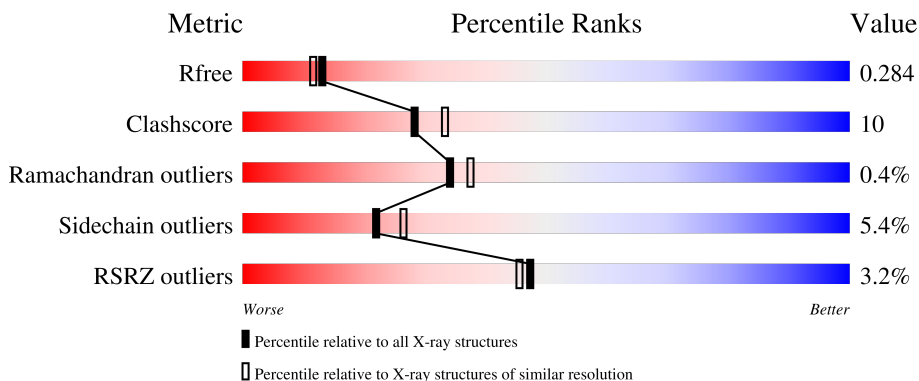
1 Overall quality at a glance

The following experimental techniques were used to determine the structure:

X-RAY DIFFRACTION

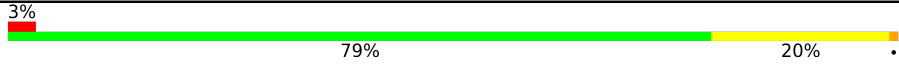
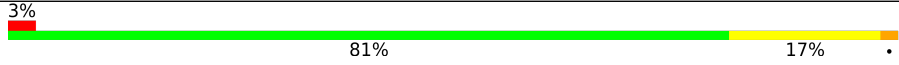

The reported resolution of this entry is 2.20 Å.

Percentile scores (ranging between 0-100) for global validation metrics of the entry are shown in the following graphic. The table shows the number of entries on which the scores are based.



Metric	Whole archive (#Entries)	Similar resolution (#Entries, resolution range(Å))
R_{free}	130704	4898 (2.20-2.20)
Clashscore	141614	5594 (2.20-2.20)
Ramachandran outliers	138981	5503 (2.20-2.20)
Sidechain outliers	138945	5504 (2.20-2.20)
RSRZ outliers	127900	4800 (2.20-2.20)

The table below summarises the geometric issues observed across the polymeric chains and their fit to the electron density. The red, orange, yellow and green segments of the lower bar indicate the fraction of residues that contain outliers for ≥ 3 , 2, 1 and 0 types of geometric quality criteria respectively. A grey segment represents the fraction of residues that are not modelled. The numeric value for each fraction is indicated below the corresponding segment, with a dot representing fractions $\leq 5\%$. The upper red bar (where present) indicates the fraction of residues that have poor fit to the electron density. The numeric value is given above the bar.

Mol	Chain	Length	Quality of chain
1	A	442	
1	B	442	
1	C	442	

The following table lists non-polymeric compounds, carbohydrate monomers and non-standard

residues in protein, DNA, RNA chains that are outliers for geometric or electron-density-fit criteria:

Mol	Type	Chain	Res	Chirality	Geometry	Clashes	Electron density
4	33G	A	503	-	-	X	-
4	33G	C	503	-	-	X	-

2 Entry composition i

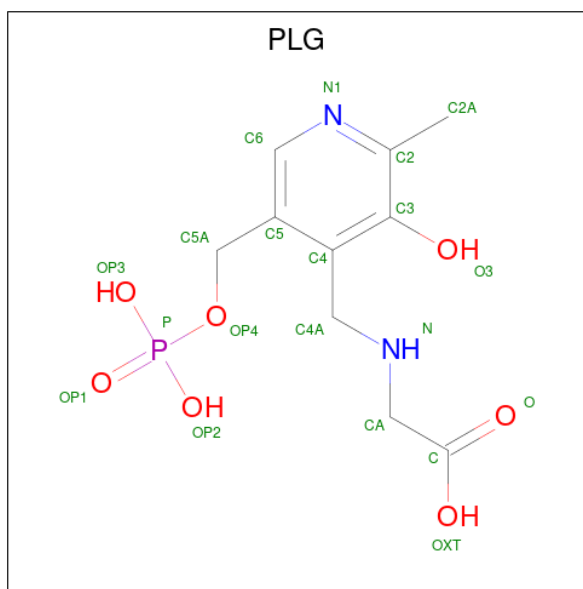
There are 6 unique types of molecules in this entry. The entry contains 11035 atoms, of which 0 are hydrogens and 0 are deuteriums.

In the tables below, the ZeroOcc column contains the number of atoms modelled with zero occupancy, the AltConf column contains the number of residues with at least one atom in alternate conformation and the Trace column contains the number of residues modelled with at most 2 atoms.

- Molecule 1 is a protein called Serine hydroxymethyltransferase.

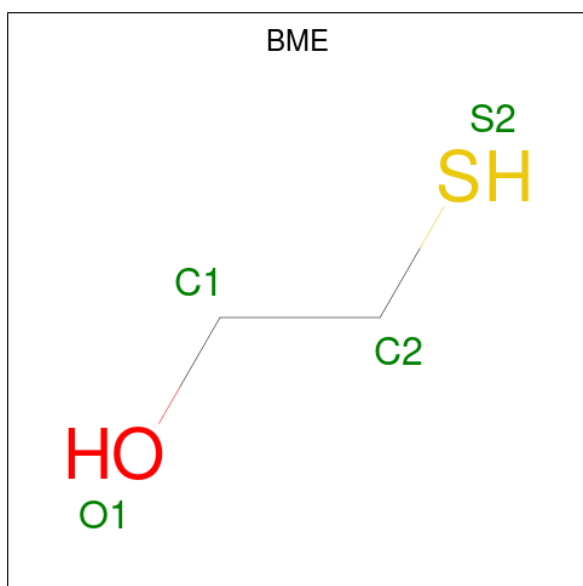
Mol	Chain	Residues	Atoms					ZeroOcc	AltConf	Trace
			Total	C	N	O	S			
1	A	442	Total 3461	C 2188	N 600	O 655	S 18	0	1	0
1	B	442	Total 3461	C 2188	N 600	O 655	S 18	0	1	0
1	C	442	Total 3461	C 2188	N 600	O 655	S 18	0	1	0

- Molecule 2 is N-GLYCINE-[3-HYDROXY-2-METHYL-5-PHOSPHONOXYMETHYL-PYRIDIN-4-YL-METHANE] (three-letter code: PLG) (formula: C₁₀H₁₅N₂O₇P).



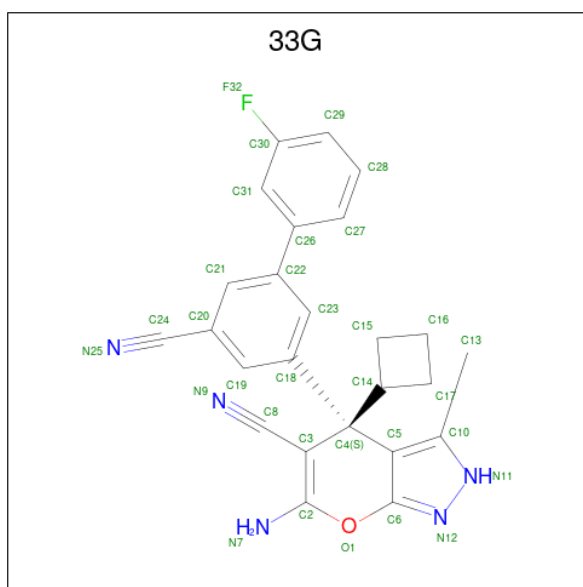
Mol	Chain	Residues	Atoms					ZeroOcc	AltConf
			Total	C	N	O	P		
2	A	1	Total 20	C 10	N 2	O 7	P 1	0	0
2	B	1	Total 20	C 10	N 2	O 7	P 1	0	0
2	C	1	Total 20	C 10	N 2	O 7	P 1	0	0

- Molecule 3 is BETA-MERCAPTOETHANOL (three-letter code: BME) (formula: C₂H₆OS).



Mol	Chain	Residues	Atoms				ZeroOcc	AltConf
3	A	1	Total	C	O	S	0	0
			4	2	1	1		
3	B	1	Total	C	O	S	0	0
			4	2	1	1		
3	C	1	Total	C	O	S	0	0
			4	2	1	1		

- Molecule 4 is (4S)-6-amino-4-(5-cyano-3'-fluorobiphenyl-3-yl)-4-cyclobutyl-3-methyl-2,4-dihydroxyprano[2,3-c]pyrazole-5-carbonitrile (three-letter code: 33G) (formula: C₂₅H₂₀FN₅O).



Mol	Chain	Residues	Atoms					ZeroOcc	AltConf
4	A	1	Total	C	F	N	O	0	0
			32	25	1	5	1		
4	B	1	Total	C	F	N	O	0	0
			32	25	1	5	1		
4	C	1	Total	C	F	N	O	0	0
			32	25	1	5	1		

- Molecule 5 is CHLORIDE ION (three-letter code: CL) (formula: Cl).

Mol	Chain	Residues	Atoms		ZeroOcc	AltConf
5	A	1	Total	Cl	0	0
			1	1		
5	C	1	Total	Cl	0	0
			1	1		

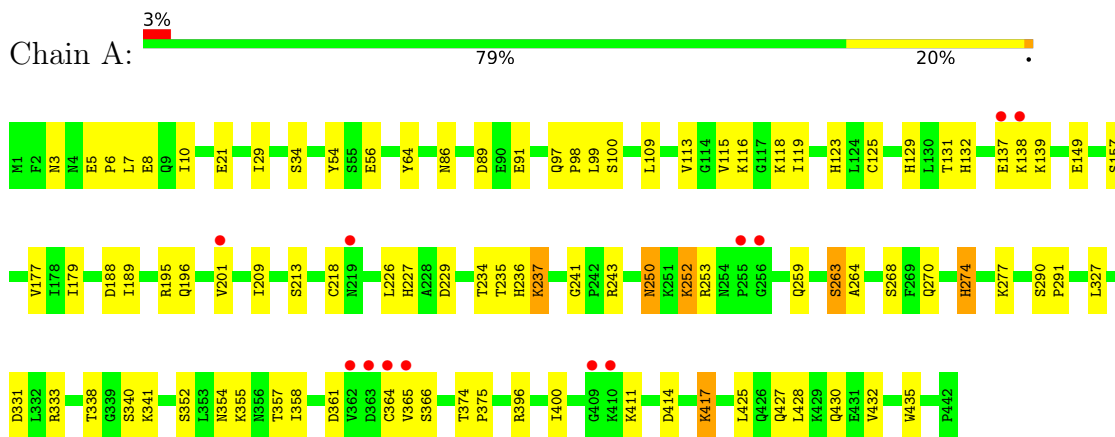
- Molecule 6 is water.

Mol	Chain	Residues	Atoms		ZeroOcc	AltConf
6	A	160	Total	O	0	0
			160	160		
6	B	155	Total	O	0	0
			155	155		
6	C	167	Total	O	0	0
			167	167		

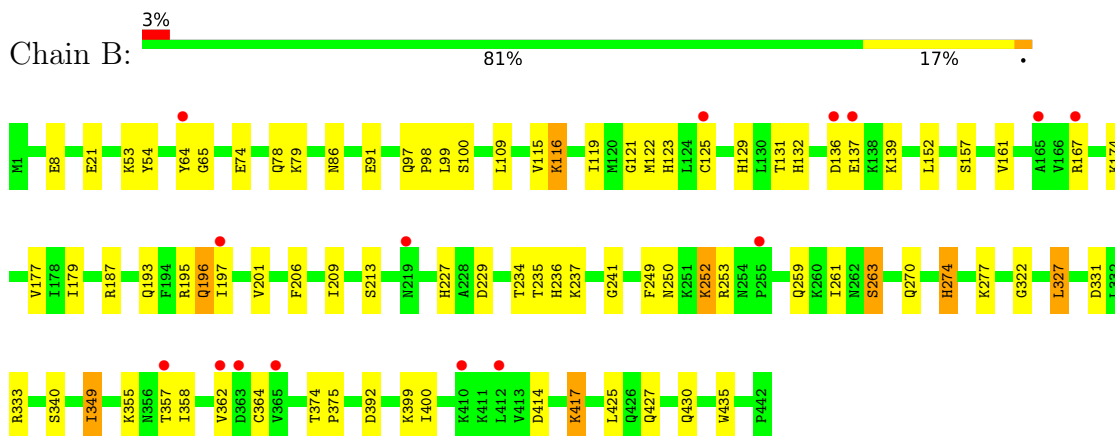
3 Residue-property plots [i](#)

These plots are drawn for all protein, RNA, DNA and oligosaccharide chains in the entry. The first graphic for a chain summarises the proportions of the various outlier classes displayed in the second graphic. The second graphic shows the sequence view annotated by issues in geometry and electron density. Residues are color-coded according to the number of geometric quality criteria for which they contain at least one outlier: green = 0, yellow = 1, orange = 2 and red = 3 or more. A red dot above a residue indicates a poor fit to the electron density ($RSRZ > 2$). Stretches of 2 or more consecutive residues without any outlier are shown as a green connector. Residues present in the sample, but not in the model, are shown in grey.

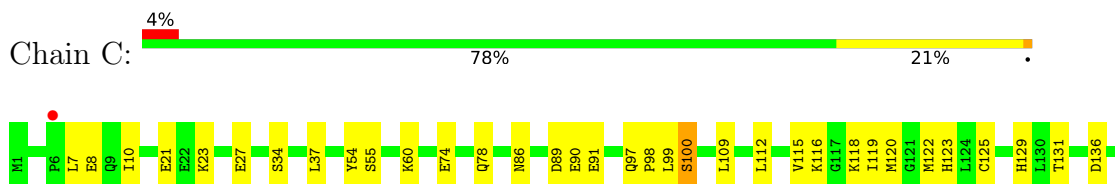
- Molecule 1: Serine hydroxymethyltransferase

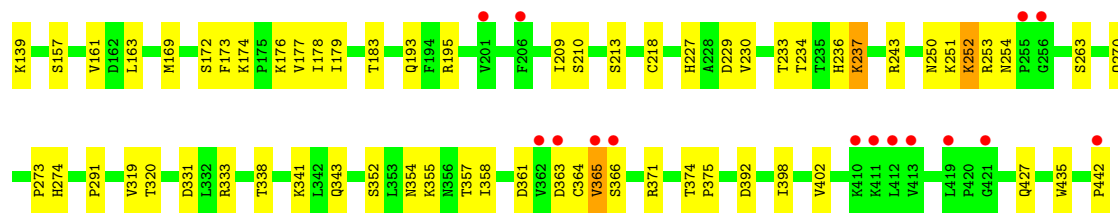


- Molecule 1: Serine hydroxymethyltransferase



- Molecule 1: Serine hydroxymethyltransferase





4 Data and refinement statistics i

Property	Value	Source
Space group	C 1 2 1	Depositor
Cell constants a, b, c, α , β , γ	100.41Å 57.99Å 236.96Å 90.00° 89.99° 90.00°	Depositor
Resolution (Å)	30.00 – 2.20 28.16 – 2.20	Depositor EDS
% Data completeness (in resolution range)	92.3 (30.00-2.20) 92.3 (28.16-2.20)	Depositor EDS
R_{merge}	0.01	Depositor
R_{sym}	(Not available)	Depositor
$\langle I/\sigma(I) \rangle$ ¹	8.75 (at 2.20Å)	Xtrriage
Refinement program	REFMAC 5.6.0117	Depositor
R, R_{free}	0.217 , 0.285 0.216 , 0.284	Depositor DCC
R_{free} test set	6489 reflections (10.08%)	wwPDB-VP
Wilson B-factor (Å ²)	27.6	Xtrriage
Anisotropy	0.039	Xtrriage
Bulk solvent k_{sol} (e/Å ³), B_{sol} (Å ²)	0.36 , 20.9	EDS
L-test for twinning ²	$\langle L \rangle = 0.50$, $\langle L^2 \rangle = 0.33$	Xtrriage
Estimated twinning fraction	0.025 for -1/2*h+3/2*k,1/2*h+1/2*k,-l 0.025 for -1/2*h-3/2*k,-1/2*h+1/2*k,-l 0.469 for 1/2*h+3/2*k,1/2*h-1/2*k,-l 0.477 for 1/2*h-3/2*k,-1/2*h-1/2*k,-l 0.023 for -h,-k,l	Xtrriage
F_o, F_c correlation	0.94	EDS
Total number of atoms	11035	wwPDB-VP
Average B, all atoms (Å ²)	31.0	wwPDB-VP

Xtrriage's analysis on translational NCS is as follows: *The largest off-origin peak in the Patterson function is 4.09% of the height of the origin peak. No significant pseudotranslation is detected.*

¹Intensities estimated from amplitudes.

²Theoretical values of $\langle |L| \rangle$, $\langle L^2 \rangle$ for acentric reflections are 0.5, 0.333 respectively for untwinned datasets, and 0.375, 0.2 for perfectly twinned datasets.

5 Model quality [i](#)

5.1 Standard geometry [i](#)

Bond lengths and bond angles in the following residue types are not validated in this section: BME, CL, PLG, 33G

The Z score for a bond length (or angle) is the number of standard deviations the observed value is removed from the expected value. A bond length (or angle) with $|Z| > 5$ is considered an outlier worth inspection. RMSZ is the root-mean-square of all Z scores of the bond lengths (or angles).

Mol	Chain	Bond lengths		Bond angles	
		RMSZ	# Z >5	RMSZ	# Z >5
1	A	0.52	1/3527 (0.0%)	0.63	0/4762
1	B	0.52	1/3527 (0.0%)	0.64	1/4762 (0.0%)
1	C	0.53	1/3527 (0.0%)	0.66	0/4762
All	All	0.52	3/10581 (0.0%)	0.64	1/14286 (0.0%)

All (3) bond length outliers are listed below:

Mol	Chain	Res	Type	Atoms	Z	Observed(Å)	Ideal(Å)
1	B	435	TRP	CD2-CE2	5.66	1.48	1.41
1	C	435	TRP	CD2-CE2	5.43	1.47	1.41
1	A	435	TRP	CD2-CE2	5.26	1.47	1.41

All (1) bond angle outliers are listed below:

Mol	Chain	Res	Type	Atoms	Z	Observed(°)	Ideal(°)
1	B	327	LEU	CA-CB-CG	5.25	127.36	115.30

There are no chirality outliers.

There are no planarity outliers.

5.2 Too-close contacts [i](#)

In the following table, the Non-H and H(model) columns list the number of non-hydrogen atoms and hydrogen atoms in the chain respectively. The H(added) column lists the number of hydrogen atoms added and optimized by MolProbity. The Clashes column lists the number of clashes within the asymmetric unit, whereas Symm-Clashes lists symmetry-related clashes.

Mol	Chain	Non-H	H(model)	H(added)	Clashes	Symm-Clashes
1	A	3461	0	3481	68	0

Continued on next page...

Continued from previous page...

Mol	Chain	Non-H	H(model)	H(added)	Clashes	Symm-Clashes
1	B	3461	0	3481	62	0
1	C	3461	0	3481	67	0
2	A	20	0	12	6	0
2	B	20	0	12	1	0
2	C	20	0	12	1	0
3	A	4	0	5	1	0
3	B	4	0	5	0	0
3	C	4	0	5	1	0
4	A	32	0	20	9	0
4	B	32	0	20	5	0
4	C	32	0	20	10	0
5	A	1	0	0	0	0
5	C	1	0	0	0	0
6	A	160	0	0	2	0
6	B	155	0	0	2	0
6	C	167	0	0	7	0
All	All	11035	0	10554	206	0

The all-atom clashscore is defined as the number of clashes found per 1000 atoms (including hydrogen atoms). The all-atom clashscore for this structure is 10.

All (206) close contacts within the same asymmetric unit are listed below, sorted by their clash magnitude.

Atom-1	Atom-2	Interatomic distance (Å)	Clash overlap (Å)
1:C:120:MET:SD	1:C:169:MET:HE3	1.94	1.06
1:C:333:ARG:HD2	1:C:358:ILE:HD11	1.37	1.06
1:C:100:SER:HB3	6:C:643:HOH:O	1.59	1.03
1:A:354:ASN:OD1	4:A:503:33G:H17	1.65	0.96
1:C:333:ARG:HD2	1:C:358:ILE:CD1	1.98	0.93
4:C:503:33G:H19	4:C:503:33G:H6	1.51	0.92
1:C:115:VAL:O	1:C:116:LYS:HG2	1.70	0.91
1:C:109:LEU:HD21	1:C:179:ILE:HD11	1.54	0.87
1:B:333:ARG:HD2	1:B:358:ILE:CD1	2.08	0.82
1:A:3:ASN:OD1	1:A:5:GLU:HG2	1.81	0.81
1:B:333:ARG:HD2	1:B:358:ILE:HD11	1.65	0.79
1:C:112:LEU:HD11	1:C:230:VAL:HG21	1.66	0.78
1:C:74:GLU:O	1:C:78:GLN:HG3	1.86	0.75
1:A:115:VAL:O	1:A:116:LYS:HG2	1.86	0.75
4:C:503:33G:H21	4:C:503:33G:H14	1.69	0.74
4:A:503:33G:C19	4:A:503:33G:H14	2.15	0.73
1:B:109:LEU:HD21	1:B:179:ILE:HD11	1.71	0.73

Continued on next page...

Continued from previous page...

Atom-1	Atom-2	Interatomic distance (Å)	Clash overlap (Å)
1:C:366:SER:HA	6:C:759:HOH:O	1.87	0.73
1:C:99:LEU:H	1:C:270:GLN:HE22	1.38	0.72
1:B:115:VAL:O	1:B:116:LYS:HG3	1.90	0.71
1:C:218:CYS:HA	3:C:502:BME:H22	1.72	0.70
1:A:188:ASP:OD1	1:A:189:ILE:N	2.24	0.70
1:A:277:LYS:HZ1	1:B:274:HIS:HD2	1.40	0.69
1:B:125:CYS:O	1:B:357:THR:HG21	1.93	0.69
1:B:99:LEU:H	1:B:270:GLN:HE22	1.40	0.68
1:A:237:LYS:CE	2:A:501:PLG:H4A2	2.24	0.67
4:C:503:33G:H18	6:C:601:HOH:O	1.93	0.67
4:C:503:33G:H21	4:C:503:33G:C17	2.26	0.66
4:C:503:33G:H14	4:C:503:33G:C13	2.25	0.66
1:A:218:CYS:HA	3:A:502:BME:H22	1.79	0.65
1:C:125:CYS:SG	1:C:364:CYS:HB2	2.36	0.65
1:A:355:LYS:HE2	4:A:503:33G:N25	2.11	0.65
1:C:7:LEU:HA	1:C:10:ILE:HG22	1.76	0.65
1:A:129:HIS:HD2	1:A:131:THR:H	1.43	0.65
1:A:129:HIS:CD2	1:A:131:THR:H	2.16	0.64
1:A:274:HIS:HD2	1:B:277:LYS:HZ1	1.48	0.61
1:B:115:VAL:O	1:B:116:LYS:CG	2.48	0.61
1:A:99:LEU:H	1:A:270:GLN:HE22	1.49	0.61
1:A:291:PRO:HD2	6:A:753:HOH:O	2.01	0.60
1:C:357:THR:HG23	1:C:361:ASP:HB2	1.84	0.60
4:C:503:33G:H6	4:C:503:33G:C15	2.29	0.60
1:A:290:SER:HB2	6:A:753:HOH:O	2.00	0.60
1:B:97:GLN:N	1:B:98:PRO:CD	2.66	0.59
1:B:123:HIS:HD2	1:B:125:CYS:H	1.48	0.59
1:C:7:LEU:HA	1:C:10:ILE:CG2	2.32	0.59
1:C:195:ARG:HD2	1:C:227:HIS:O	2.03	0.59
1:A:277:LYS:NZ	1:B:274:HIS:HD2	2.02	0.58
1:B:174:LYS:HE3	1:B:201:VAL:HG13	1.85	0.58
1:C:120:MET:HE2	1:C:178:ILE:HG12	1.86	0.58
1:A:137:GLU:O	1:A:138:LYS:HB2	2.02	0.57
1:A:91:GLU:HG3	1:A:252:LYS:HG3	1.86	0.57
1:C:129:HIS:CD2	1:C:131:THR:H	2.22	0.57
1:B:195:ARG:HB2	1:B:227:HIS:HB3	1.86	0.57
1:A:333:ARG:HD2	1:A:358:ILE:CD1	2.34	0.57
4:A:503:33G:C8	4:A:503:33G:H19	2.34	0.56
4:C:503:33G:H19	4:C:503:33G:C19	2.32	0.56
1:A:274:HIS:HD2	1:B:277:LYS:NZ	2.02	0.56
1:B:196:GLN:HG3	6:B:614:HOH:O	2.05	0.55

Continued on next page...

Continued from previous page...

Atom-1	Atom-2	Interatomic distance (Å)	Clash overlap (Å)
1:A:109:LEU:O	1:A:113:VAL:HG22	2.07	0.55
1:A:237:LYS:NZ	2:A:501:PLG:H4A2	2.21	0.55
1:A:123:HIS:HD2	1:A:125:CYS:H	1.55	0.55
1:B:129:HIS:CD2	1:B:131:THR:H	2.25	0.54
1:B:414:ASP:O	1:B:417:LYS:HG2	2.07	0.54
1:C:34:SER:HB2	1:C:237:LYS:HE3	1.89	0.54
1:B:259:GLN:O	1:B:263:SER:HB3	2.07	0.54
1:C:129:HIS:HD2	1:C:131:THR:OG1	1.91	0.54
1:C:183:THR:HG21	4:C:503:33G:O1	2.07	0.53
1:B:355:LYS:HE2	4:B:503:33G:N25	2.24	0.53
1:A:236:HIS:ND1	1:A:243:ARG:HA	2.24	0.53
1:B:229:ASP:OD1	1:B:253:ARG:HD2	2.09	0.53
1:C:89:ASP:O	1:C:251:LYS:NZ	2.42	0.53
1:C:23:LYS:HE2	1:C:27:GLU:OE2	2.09	0.53
1:C:229:ASP:OD1	1:C:253:ARG:HD2	2.09	0.52
1:A:250:ASN:HD22	1:A:250:ASN:C	2.12	0.52
1:C:363:ASP:OD1	1:C:365:VAL:N	2.41	0.52
1:B:79:LYS:NZ	6:B:602:HOH:O	2.41	0.52
1:C:136:ASP:HB3	1:C:139:LYS:H	1.74	0.52
1:C:60:LYS:HE3	6:C:730:HOH:O	2.10	0.52
1:A:357:THR:HG23	1:A:361:ASP:HB2	1.90	0.52
1:A:235:THR:O	1:A:241:GLY:N	2.43	0.51
1:A:229:ASP:OD1	1:A:253:ARG:HD2	2.11	0.51
1:C:176:LYS:HD3	6:C:711:HOH:O	2.11	0.51
1:A:331:ASP:C	1:A:331:ASP:OD1	2.49	0.51
1:B:195:ARG:HD3	1:B:253:ARG:NH1	2.26	0.50
1:C:97:GLN:N	1:C:98:PRO:CD	2.75	0.50
1:B:209:ILE:HD12	1:B:213:SER:HA	1.93	0.49
1:A:129:HIS:H	1:A:132:HIS:CD2	2.31	0.49
4:B:503:33G:H6	4:B:503:33G:C17	2.43	0.49
1:C:343:GLN:OE1	1:C:354:ASN:HA	2.11	0.49
1:C:109:LEU:HD22	1:C:119:ILE:HG21	1.95	0.49
1:B:195:ARG:HD2	1:B:227:HIS:O	2.13	0.49
1:B:234:THR:HB	1:B:236:HIS:CE1	2.47	0.49
1:C:118:LYS:HG2	1:C:173:PHE:CZ	2.48	0.49
1:A:119:ILE:HG22	1:A:177:VAL:HB	1.94	0.49
1:B:357:THR:CG2	1:B:358:ILE:N	2.76	0.49
1:A:109:LEU:HD21	1:A:179:ILE:HD11	1.95	0.48
1:A:274:HIS:CD2	1:B:277:LYS:NZ	2.80	0.48
1:C:120:MET:SD	1:C:169:MET:CE	2.86	0.48
1:B:122:MET:HE3	1:B:161:VAL:HG12	1.94	0.48

Continued on next page...

Continued from previous page...

Atom-1	Atom-2	Interatomic distance (Å)	Clash overlap (Å)
1:C:37:LEU:HD22	1:C:442:PRO:HD2	1.95	0.48
1:C:234:THR:HB	1:C:236:HIS:CE1	2.47	0.48
4:A:503:33G:H15	1:B:64:TYR:HE1	1.78	0.48
1:B:109:LEU:HD22	1:B:119:ILE:HG21	1.95	0.48
1:A:400:ILE:HD13	1:A:425:LEU:HD23	1.94	0.48
1:B:97:GLN:N	1:B:98:PRO:HD3	2.28	0.48
1:C:355:LYS:HE3	4:C:503:33G:N25	2.28	0.48
1:B:193:GLN:O	1:B:197:ILE:HG13	2.13	0.48
4:C:503:33G:C15	4:C:503:33G:C19	2.91	0.48
1:A:374:THR:N	1:A:375:PRO:CD	2.77	0.48
2:A:501:PLG:H5A2	2:A:501:PLG:H4A1	1.44	0.48
1:B:123:HIS:CD2	1:B:125:CYS:H	2.31	0.48
1:B:129:HIS:HD2	1:B:131:THR:H	1.60	0.48
1:B:125:CYS:O	1:B:357:THR:CG2	2.62	0.47
1:A:34:SER:HB2	1:A:237:LYS:HE3	1.96	0.47
1:A:396:ARG:CZ	1:A:428:LEU:HD13	2.44	0.47
1:B:121:GLY:O	1:B:152:LEU:HA	2.13	0.47
1:B:249:PHE:HB3	1:B:261:ILE:HD12	1.95	0.47
1:A:374:THR:N	1:A:375:PRO:HD3	2.29	0.47
1:C:119:ILE:HG22	1:C:177:VAL:HB	1.96	0.47
1:A:64:TYR:OH	4:B:503:33G:H18	2.15	0.47
1:A:195:ARG:HD2	1:A:227:HIS:O	2.14	0.47
1:A:56:GLU:OE1	4:B:503:33G:H20	2.15	0.47
1:B:129:HIS:CE1	2:B:501:PLG:C4	2.97	0.47
1:B:252:LYS:HB3	1:B:252:LYS:HE2	1.51	0.47
1:B:400:ILE:HG21	1:B:425:LEU:HD21	1.97	0.47
1:A:91:GLU:HG3	1:A:252:LYS:HB2	1.95	0.47
1:A:97:GLN:N	1:A:98:PRO:CD	2.78	0.47
1:A:277:LYS:NZ	1:B:274:HIS:CD2	2.82	0.47
1:B:195:ARG:HD3	1:B:253:ARG:HH12	1.80	0.47
4:A:503:33G:H14	4:A:503:33G:H6	1.94	0.46
1:B:187:ARG:NH2	1:B:322:GLY:HA3	2.30	0.46
1:C:7:LEU:CA	1:C:10:ILE:HG22	2.45	0.46
1:C:354:ASN:ND2	6:C:603:HOH:O	2.48	0.46
1:A:201:VAL:HG12	1:A:201:VAL:O	2.16	0.46
1:A:109:LEU:HD22	1:A:119:ILE:HG21	1.97	0.46
1:A:226:LEU:HB2	1:A:227:HIS:CD2	2.50	0.46
1:C:129:HIS:HD2	1:C:131:THR:H	1.60	0.45
1:A:7:LEU:HA	1:A:10:ILE:HG22	1.99	0.45
1:B:122:MET:CE	1:B:161:VAL:HG12	2.46	0.45
1:B:374:THR:N	1:B:375:PRO:CD	2.80	0.45

Continued on next page...

Continued from previous page...

Atom-1	Atom-2	Interatomic distance (Å)	Clash overlap (Å)
1:C:209:ILE:HG13	1:C:233:THR:HB	1.98	0.45
1:A:237:LYS:HE2	2:A:501:PLG:H4A2	1.98	0.45
1:C:357:THR:CG2	1:C:358:ILE:N	2.79	0.45
1:B:417:LYS:HB3	1:B:417:LYS:HE3	1.76	0.45
4:B:503:33G:H14	4:B:503:33G:C8	2.46	0.45
1:C:398:ILE:O	1:C:402:VAL:HG23	2.16	0.45
1:A:7:LEU:HA	1:A:10:ILE:CG2	2.47	0.44
1:C:163:LEU:HD13	1:C:193:GLN:NE2	2.32	0.44
1:B:119:ILE:HG22	1:B:177:VAL:HB	1.98	0.44
1:A:129:HIS:HB2	2:A:501:PLG:H2A3	2.00	0.44
1:C:109:LEU:CD2	1:C:177:VAL:HG11	2.47	0.44
1:B:333:ARG:HD2	1:B:358:ILE:HD12	1.98	0.44
1:A:411:LYS:HA	1:A:411:LYS:HD3	1.66	0.44
1:B:53:LYS:NZ	1:B:65:GLY:O	2.51	0.44
1:A:357:THR:HG22	1:A:358:ILE:N	2.32	0.44
1:B:97:GLN:H	1:B:98:PRO:HD3	1.81	0.44
1:C:112:LEU:HD11	1:C:230:VAL:CG2	2.43	0.43
1:A:5:GLU:HG3	1:A:10:ILE:HB	2.00	0.43
1:A:234:THR:HG21	2:A:501:PLG:H5A1	1.99	0.43
1:A:355:LYS:O	4:A:503:33G:H16	2.18	0.43
1:C:338:THR:OG1	1:C:341:LYS:HG3	2.18	0.43
1:C:91:GLU:HG3	1:C:252:LYS:HB2	1.99	0.43
1:A:118:LYS:HA	1:A:149:GLU:O	2.18	0.43
1:C:319:VAL:HG12	1:C:320:THR:HG23	2.01	0.43
1:C:331:ASP:OD1	1:C:331:ASP:C	2.57	0.43
1:C:354:ASN:HD21	1:C:371:ARG:HH21	1.65	0.43
1:B:129:HIS:H	1:B:132:HIS:CD2	2.36	0.42
1:C:120:MET:HE2	1:C:178:ILE:CG1	2.48	0.42
1:C:195:ARG:HD3	1:C:253:ARG:NH1	2.33	0.42
1:B:174:LYS:CE	1:B:201:VAL:HG13	2.49	0.42
4:A:503:33G:H15	1:B:64:TYR:CE1	2.54	0.42
1:A:115:VAL:C	1:A:116:LYS:HG2	2.40	0.42
1:B:374:THR:N	1:B:375:PRO:HD3	2.33	0.42
1:A:338:THR:OG1	1:A:341:LYS:HG3	2.19	0.42
1:B:74:GLU:O	1:B:78:GLN:HG3	2.19	0.42
1:C:120:MET:HE2	1:C:178:ILE:CD1	2.50	0.42
1:C:291:PRO:HD2	6:C:766:HOH:O	2.19	0.42
1:C:374:THR:N	1:C:375:PRO:CD	2.83	0.42
1:A:6:PRO:O	1:A:10:ILE:HG22	2.19	0.42
1:A:414:ASP:O	1:A:417:LYS:HG3	2.20	0.42
4:A:503:33G:C19	4:A:503:33G:C17	2.89	0.42

Continued on next page...

Continued from previous page...

Atom-1	Atom-2	Interatomic distance (Å)	Clash overlap (Å)
1:C:195:ARG:HB2	1:C:227:HIS:HB3	2.02	0.42
1:A:226:LEU:HB2	1:A:227:HIS:HD2	1.84	0.41
1:C:34:SER:OG	2:C:501:PLG:OXT	2.34	0.41
1:C:236:HIS:ND1	1:C:243:ARG:HA	2.34	0.41
1:A:29:ILE:HG13	1:A:432:VAL:HG13	2.03	0.41
1:A:250:ASN:C	1:A:250:ASN:ND2	2.74	0.41
1:A:259:GLN:O	1:A:263:SER:HB3	2.20	0.41
1:B:91:GLU:HG3	1:B:252:LYS:HB2	2.01	0.41
1:B:331:ASP:OD1	1:B:331:ASP:C	2.59	0.41
1:C:251:LYS:O	1:C:254:ASN:N	2.53	0.41
1:A:129:HIS:HD2	1:A:131:THR:OG1	2.04	0.41
1:B:235:THR:O	1:B:241:GLY:N	2.51	0.41
1:A:264:ALA:O	1:A:268:SER:HB2	2.21	0.41
1:B:136:ASP:OD1	1:B:137:GLU:N	2.52	0.41
1:C:210:SER:HB3	1:C:234:THR:OG1	2.20	0.41
1:A:209:ILE:HD12	1:A:213:SER:HA	2.03	0.41
1:C:55:SER:HB2	1:C:273:PRO:HG2	2.03	0.41
1:C:122:MET:CE	1:C:161:VAL:HG12	2.51	0.41
1:C:123:HIS:HD2	1:C:125:CYS:H	1.69	0.41
1:C:209:ILE:HD12	1:C:213:SER:HA	2.03	0.41
1:A:234:THR:HB	1:A:236:HIS:CE1	2.57	0.40
1:C:125:CYS:SG	1:C:364:CYS:CB	3.08	0.40
1:B:349:ILE:H	1:B:349:ILE:HG12	1.76	0.40
1:C:109:LEU:HD23	1:C:177:VAL:HG11	2.03	0.40
1:B:274:HIS:O	1:B:277:LYS:HB2	2.22	0.40

There are no symmetry-related clashes.

5.3 Torsion angles [i](#)

5.3.1 Protein backbone [i](#)

In the following table, the Percentiles column shows the percent Ramachandran outliers of the chain as a percentile score with respect to all X-ray entries followed by that with respect to entries of similar resolution.

The Analysed column shows the number of residues for which the backbone conformation was analysed, and the total number of residues.

Mol	Chain	Analysed	Favoured	Allowed	Outliers	Percentiles
1	A	441/442 (100%)	429 (97%)	9 (2%)	3 (1%)	22 22

Continued on next page...

Continued from previous page...

Mol	Chain	Analysed	Favoured	Allowed	Outliers	Percentiles	
1	B	441/442 (100%)	430 (98%)	10 (2%)	1 (0%)	47	55
1	C	441/442 (100%)	431 (98%)	9 (2%)	1 (0%)	47	55
All	All	1323/1326 (100%)	1290 (98%)	28 (2%)	5 (0%)	34	37

All (5) Ramachandran outliers are listed below:

Mol	Chain	Res	Type
1	B	237	LYS
1	A	89	ASP
1	A	237	LYS
1	C	237	LYS
1	A	366	SER

5.3.2 Protein sidechains [i](#)

In the following table, the Percentiles column shows the percent sidechain outliers of the chain as a percentile score with respect to all X-ray entries followed by that with respect to entries of similar resolution.

The Analysed column shows the number of residues for which the sidechain conformation was analysed, and the total number of residues.

Mol	Chain	Analysed	Rotameric	Outliers	Percentiles	
1	A	382/381 (100%)	362 (95%)	20 (5%)	23	28
1	B	382/381 (100%)	357 (94%)	25 (6%)	17	19
1	C	382/381 (100%)	365 (96%)	17 (4%)	27	34
All	All	1146/1143 (100%)	1084 (95%)	62 (5%)	22	26

All (62) residues with a non-rotameric sidechain are listed below:

Mol	Chain	Res	Type
1	A	8	GLU
1	A	21	GLU
1	A	54	TYR
1	A	86	ASN
1	A	100	SER
1	A	139	LYS
1	A	157	SER
1	A	196	GLN
1	A	250	ASN

Continued on next page...

Continued from previous page...

Mol	Chain	Res	Type
1	A	252	LYS
1	A	263	SER
1	A	274	HIS
1	A	327	LEU
1	A	340	SER
1	A	352	SER
1	A	364	CYS
1	A	365	VAL
1	A	417	LYS
1	A	427	GLN
1	A	430	GLN
1	B	8	GLU
1	B	21	GLU
1	B	54	TYR
1	B	86	ASN
1	B	100	SER
1	B	116	LYS
1	B	139	LYS
1	B	157	SER
1	B	167	ARG
1	B	196	GLN
1	B	206	PHE
1	B	250	ASN
1	B	252	LYS
1	B	263	SER
1	B	274	HIS
1	B	327	LEU
1	B	340	SER
1	B	349	ILE
1	B	362	VAL
1	B	364	CYS
1	B	392	ASP
1	B	399	LYS
1	B	417	LYS
1	B	427	GLN
1	B	430	GLN
1	C	8	GLU
1	C	21	GLU
1	C	54	TYR
1	C	86	ASN
1	C	90	GLU
1	C	100	SER

Continued on next page...

Continued from previous page...

Mol	Chain	Res	Type
1	C	157	SER
1	C	172	SER
1	C	174	LYS
1	C	250	ASN
1	C	252	LYS
1	C	263	SER
1	C	274	HIS
1	C	352	SER
1	C	365	VAL
1	C	392	ASP
1	C	427	GLN

Sometimes sidechains can be flipped to improve hydrogen bonding and reduce clashes. All (38) such sidechains are listed below:

Mol	Chain	Res	Type
1	A	86	ASN
1	A	107	GLN
1	A	123	HIS
1	A	129	HIS
1	A	132	HIS
1	A	192	GLN
1	A	193	GLN
1	A	196	GLN
1	A	202	ASN
1	A	219	ASN
1	A	227	HIS
1	A	250	ASN
1	A	270	GLN
1	A	274	HIS
1	A	356	ASN
1	A	405	GLN
1	A	426	GLN
1	A	427	GLN
1	A	430	GLN
1	B	107	GLN
1	B	123	HIS
1	B	129	HIS
1	B	132	HIS
1	B	250	ASN
1	B	270	GLN
1	B	274	HIS
1	B	356	ASN

Continued on next page...

Continued from previous page...

Mol	Chain	Res	Type
1	C	107	GLN
1	C	123	HIS
1	C	129	HIS
1	C	132	HIS
1	C	193	GLN
1	C	202	ASN
1	C	250	ASN
1	C	270	GLN
1	C	354	ASN
1	C	356	ASN
1	C	405	GLN

5.3.3 RNA [i](#)

There are no RNA molecules in this entry.

5.4 Non-standard residues in protein, DNA, RNA chains [i](#)

There are no non-standard protein/DNA/RNA residues in this entry.

5.5 Carbohydrates [i](#)

There are no monosaccharides in this entry.

5.6 Ligand geometry [i](#)

Of 11 ligands modelled in this entry, 2 are monoatomic - leaving 9 for Mogul analysis.

In the following table, the Counts columns list the number of bonds (or angles) for which Mogul statistics could be retrieved, the number of bonds (or angles) that are observed in the model and the number of bonds (or angles) that are defined in the Chemical Component Dictionary. The Link column lists molecule types, if any, to which the group is linked. The Z score for a bond length (or angle) is the number of standard deviations the observed value is removed from the expected value. A bond length (or angle) with $|Z| > 2$ is considered an outlier worth inspection. RMSZ is the root-mean-square of all Z scores of the bond lengths (or angles).

Mol	Type	Chain	Res	Link	Bond lengths			Bond angles		
					Counts	RMSZ	# Z > 2	Counts	RMSZ	# Z > 2
3	BME	B	502	1	3,3,3	0.38	0	1,2,2	0.87	0
2	PLG	A	501	-	20,20,20	1.27	1 (5%)	25,28,28	2.94	9 (36%)

Mol	Type	Chain	Res	Link	Bond lengths			Bond angles		
					Counts	RMSZ	# Z > 2	Counts	RMSZ	# Z > 2
2	PLG	B	501	-	20,20,20	1.23	1 (5%)	25,28,28	2.98	5 (20%)
3	BME	A	502	1	3,3,3	0.48	0	1,2,2	0.07	0
3	BME	C	502	1	3,3,3	0.30	0	1,2,2	0.34	0
4	33G	B	503	-	31,36,36	2.94	5 (16%)	38,54,54	2.39	8 (21%)
2	PLG	C	501	-	20,20,20	1.15	1 (5%)	25,28,28	2.97	7 (28%)
4	33G	C	503	-	31,36,36	2.91	5 (16%)	38,54,54	2.39	7 (18%)
4	33G	A	503	-	31,36,36	2.83	5 (16%)	38,54,54	2.36	6 (15%)

In the following table, the Chirals column lists the number of chiral outliers, the number of chiral centers analysed, the number of these observed in the model and the number defined in the Chemical Component Dictionary. Similar counts are reported in the Torsion and Rings columns. '-' means no outliers of that kind were identified.

Mol	Type	Chain	Res	Link	Chirals	Torsions	Rings
3	BME	B	502	1	-	0/1/1/1	-
2	PLG	A	501	-	-	2/12/12/12	0/1/1/1
2	PLG	B	501	-	-	2/12/12/12	0/1/1/1
3	BME	A	502	1	-	1/1/1/1	-
3	BME	C	502	1	-	0/1/1/1	-
4	33G	B	503	-	-	1/12/46/46	0/5/5/5
2	PLG	C	501	-	-	4/12/12/12	0/1/1/1
4	33G	C	503	-	-	4/12/46/46	0/5/5/5
4	33G	A	503	-	-	2/12/46/46	0/5/5/5

All (18) bond length outliers are listed below:

Mol	Chain	Res	Type	Atoms	Z	Observed(Å)	Ideal(Å)
4	C	503	33G	C8-C3	-10.52	1.28	1.42
4	B	503	33G	C8-C3	-10.36	1.28	1.42
4	A	503	33G	C8-C3	-9.46	1.29	1.42
4	A	503	33G	O1-C2	9.19	1.47	1.36
4	B	503	33G	O1-C2	8.91	1.46	1.36
4	C	503	33G	O1-C2	8.53	1.46	1.36
4	B	503	33G	C20-C24	-7.67	1.27	1.44
4	C	503	33G	C20-C24	-7.34	1.28	1.44
4	A	503	33G	C20-C24	-7.02	1.29	1.44
2	A	501	PLG	C4A-N	-4.10	1.26	1.46
2	B	501	PLG	C4A-N	-3.99	1.27	1.46
2	C	501	PLG	C4A-N	-3.92	1.27	1.46
4	A	503	33G	N12-N11	2.39	1.42	1.37

Continued on next page...

Continued from previous page...

Mol	Chain	Res	Type	Atoms	Z	Observed(Å)	Ideal(Å)
4	B	503	33G	N12-N11	2.25	1.42	1.37
4	B	503	33G	C8-N9	2.21	1.18	1.14
4	A	503	33G	C8-N9	2.18	1.18	1.14
4	C	503	33G	C8-N9	2.18	1.18	1.14
4	C	503	33G	N12-N11	2.06	1.41	1.37

All (42) bond angle outliers are listed below:

Mol	Chain	Res	Type	Atoms	Z	Observed(°)	Ideal(°)
2	B	501	PLG	C4A-N-CA	11.09	124.16	112.58
2	C	501	PLG	C4A-N-CA	10.72	123.77	112.58
4	A	503	33G	O1-C2-N7	9.71	117.19	110.22
4	B	503	33G	O1-C2-N7	9.37	116.95	110.22
4	C	503	33G	O1-C2-N7	7.95	115.93	110.22
2	A	501	PLG	C4A-N-CA	7.83	120.76	112.58
2	A	501	PLG	OP4-C5A-C5	7.69	124.00	109.35
4	A	503	33G	C3-C2-N7	-7.46	120.00	127.47
4	B	503	33G	C3-C2-N7	-7.20	120.25	127.47
4	C	503	33G	C3-C2-N7	-7.10	120.35	127.47
2	A	501	PLG	C4-C4A-N	5.84	122.50	111.58
2	B	501	PLG	C4-C4A-N	5.70	122.23	111.58
2	C	501	PLG	C4-C4A-N	5.38	121.64	111.58
2	C	501	PLG	OP4-C5A-C5	5.36	119.56	109.35
2	B	501	PLG	OP4-C5A-C5	5.35	119.55	109.35
4	C	503	33G	C16-C17-C14	5.02	91.59	88.38
4	C	503	33G	C16-C15-C14	4.65	91.35	88.38
4	C	503	33G	C10-C5-C6	-4.05	99.73	104.01
2	A	501	PLG	C5A-C5-C6	3.84	125.69	119.37
4	B	503	33G	C16-C15-C14	3.81	90.82	88.38
2	C	501	PLG	OP3-P-OP2	3.55	121.19	107.64
4	B	503	33G	C16-C17-C14	3.39	90.55	88.38
2	C	501	PLG	OP3-P-OP4	-3.39	97.72	106.73
2	B	501	PLG	OP3-P-OP4	-3.34	97.83	106.73
2	A	501	PLG	OP2-P-OP4	-3.23	98.13	106.73
4	A	503	33G	C5-C4-C3	3.15	110.75	104.34
4	A	503	33G	C10-C5-C6	-3.10	100.74	104.01
4	B	503	33G	C13-C10-N11	2.88	125.99	119.65
4	B	503	33G	C10-C5-C6	-2.75	101.10	104.01
2	A	501	PLG	OP3-P-OP2	2.66	117.79	107.64
4	C	503	33G	C5-C4-C3	2.62	109.67	104.34
4	B	503	33G	C5-C4-C3	2.51	109.45	104.34
2	A	501	PLG	C6-C5-C4	2.48	119.87	118.12

Continued on next page...

Continued from previous page...

Mol	Chain	Res	Type	Atoms	Z	Observed(°)	Ideal(°)
4	C	503	33G	C29-C30-C31	-2.40	120.17	123.29
4	A	503	33G	C13-C10-N11	2.37	124.87	119.65
2	C	501	PLG	OXT-C-CA	2.33	120.82	112.74
4	B	503	33G	C29-C30-C31	-2.32	120.27	123.29
2	A	501	PLG	C5-C6-N1	-2.21	120.13	123.82
2	A	501	PLG	C4A-C4-C3	2.21	122.41	120.04
2	C	501	PLG	C4A-C4-C5	2.14	122.09	119.71
4	A	503	33G	C6-O1-C2	2.07	120.62	118.38
2	B	501	PLG	C4A-C4-C5	2.01	121.94	119.71

There are no chirality outliers.

All (16) torsion outliers are listed below:

Mol	Chain	Res	Type	Atoms
2	B	501	PLG	C5-C4-C4A-N
2	C	501	PLG	C3-C4-C4A-N
2	C	501	PLG	C5-C4-C4A-N
3	A	502	BME	O1-C1-C2-S2
2	A	501	PLG	C5-C4-C4A-N
2	C	501	PLG	C5A-OP4-P-OP1
4	A	503	33G	C19-C18-C4-C5
2	A	501	PLG	C3-C4-C4A-N
2	B	501	PLG	C3-C4-C4A-N
2	C	501	PLG	C-CA-N-C4A
4	A	503	33G	C23-C18-C4-C5
4	B	503	33G	C23-C18-C4-C5
4	C	503	33G	C19-C18-C4-C5
4	C	503	33G	C23-C18-C4-C5
4	C	503	33G	C19-C18-C4-C14
4	C	503	33G	C23-C18-C4-C14

There are no ring outliers.

8 monomers are involved in 34 short contacts:

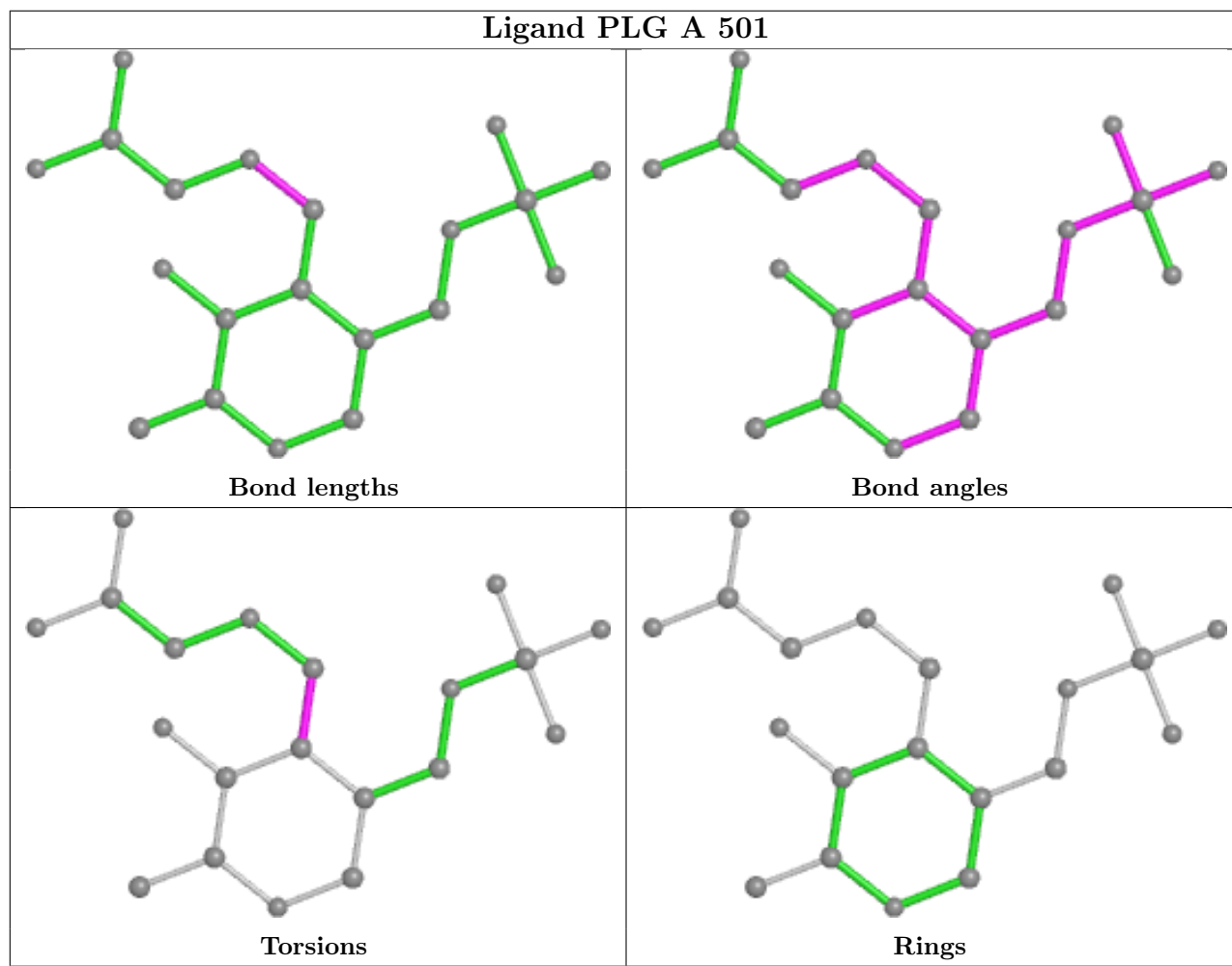
Mol	Chain	Res	Type	Clashes	Symm-Clashes
2	A	501	PLG	6	0
2	B	501	PLG	1	0
3	A	502	BME	1	0
3	C	502	BME	1	0
4	B	503	33G	5	0
2	C	501	PLG	1	0

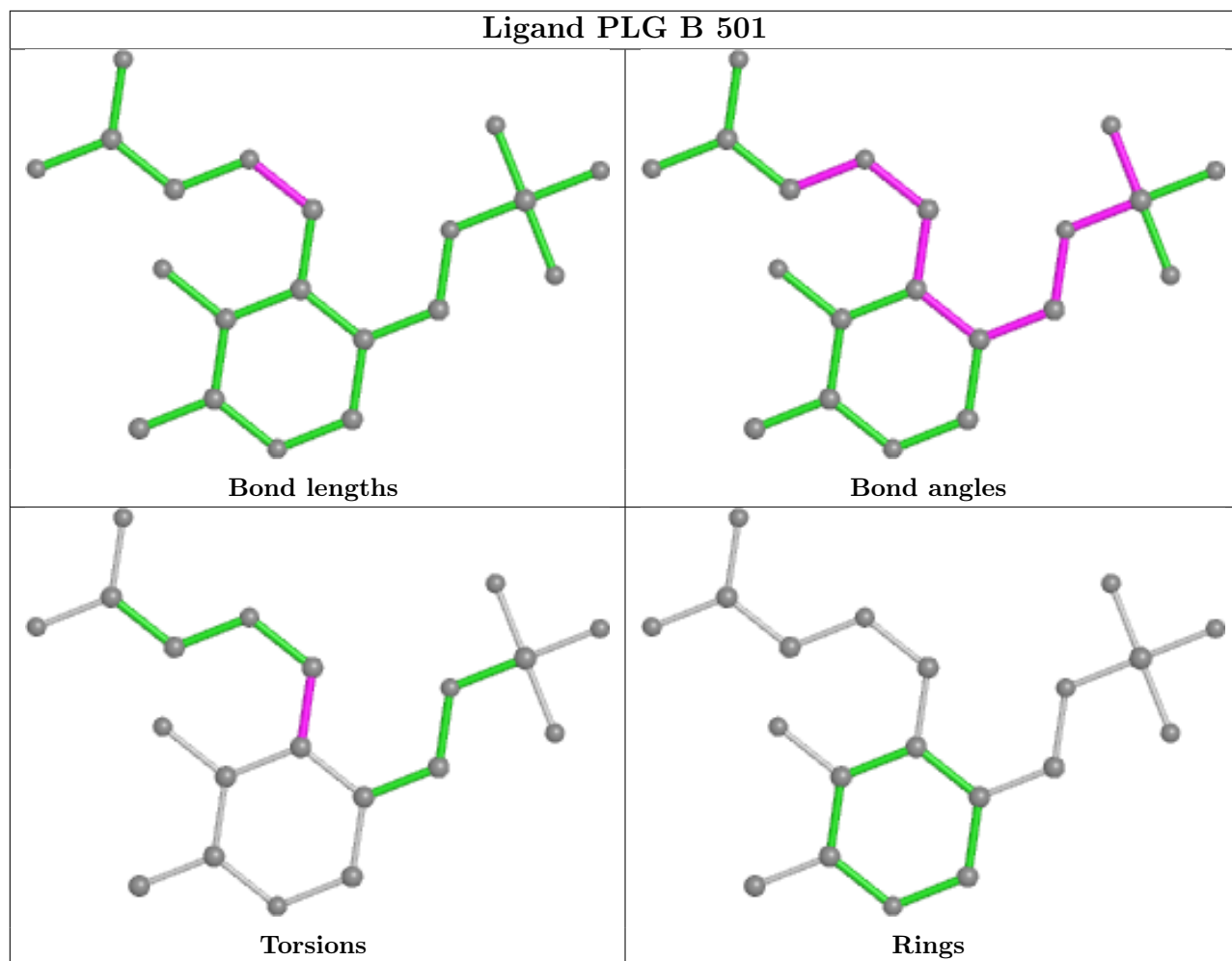
Continued on next page...

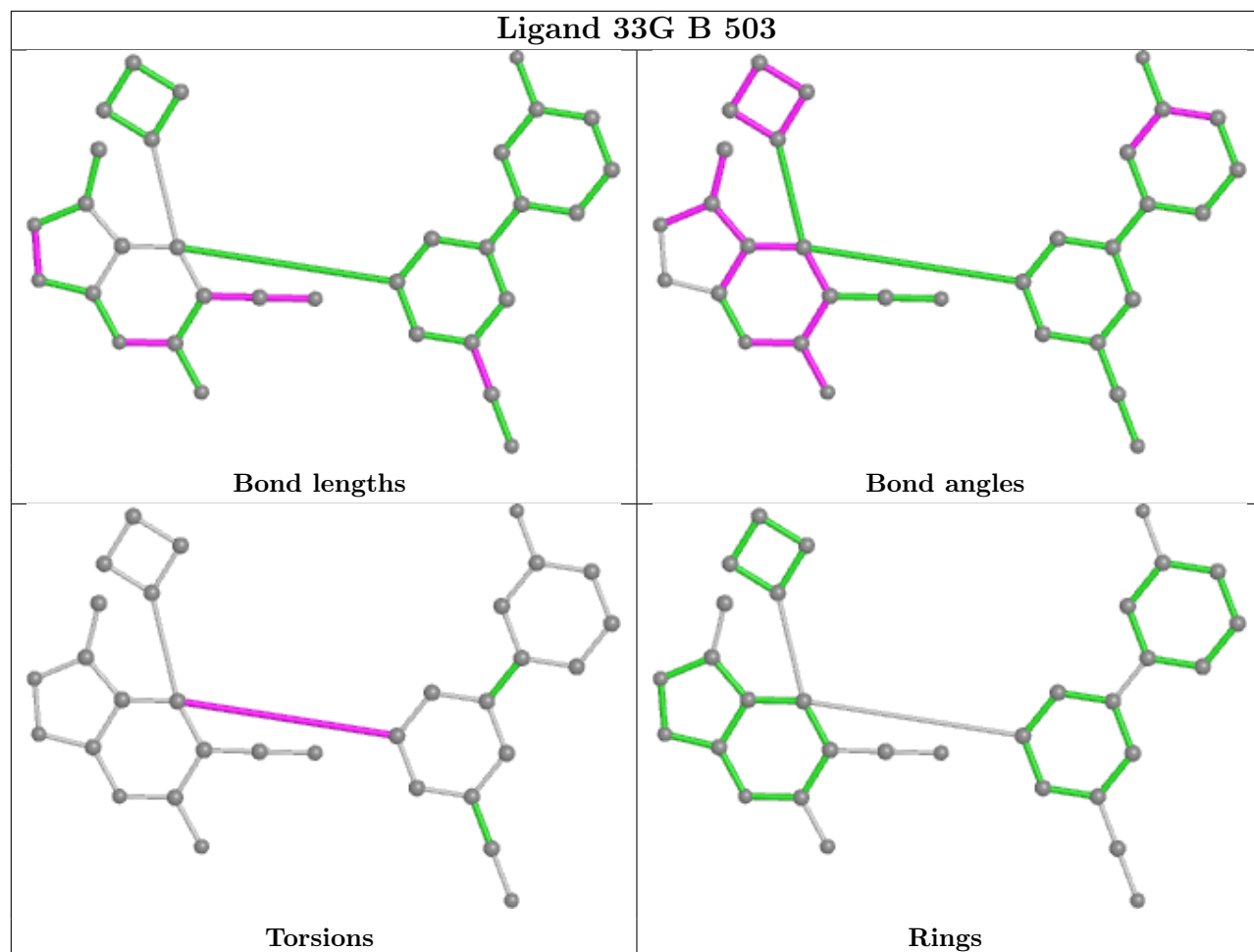
Continued from previous page...

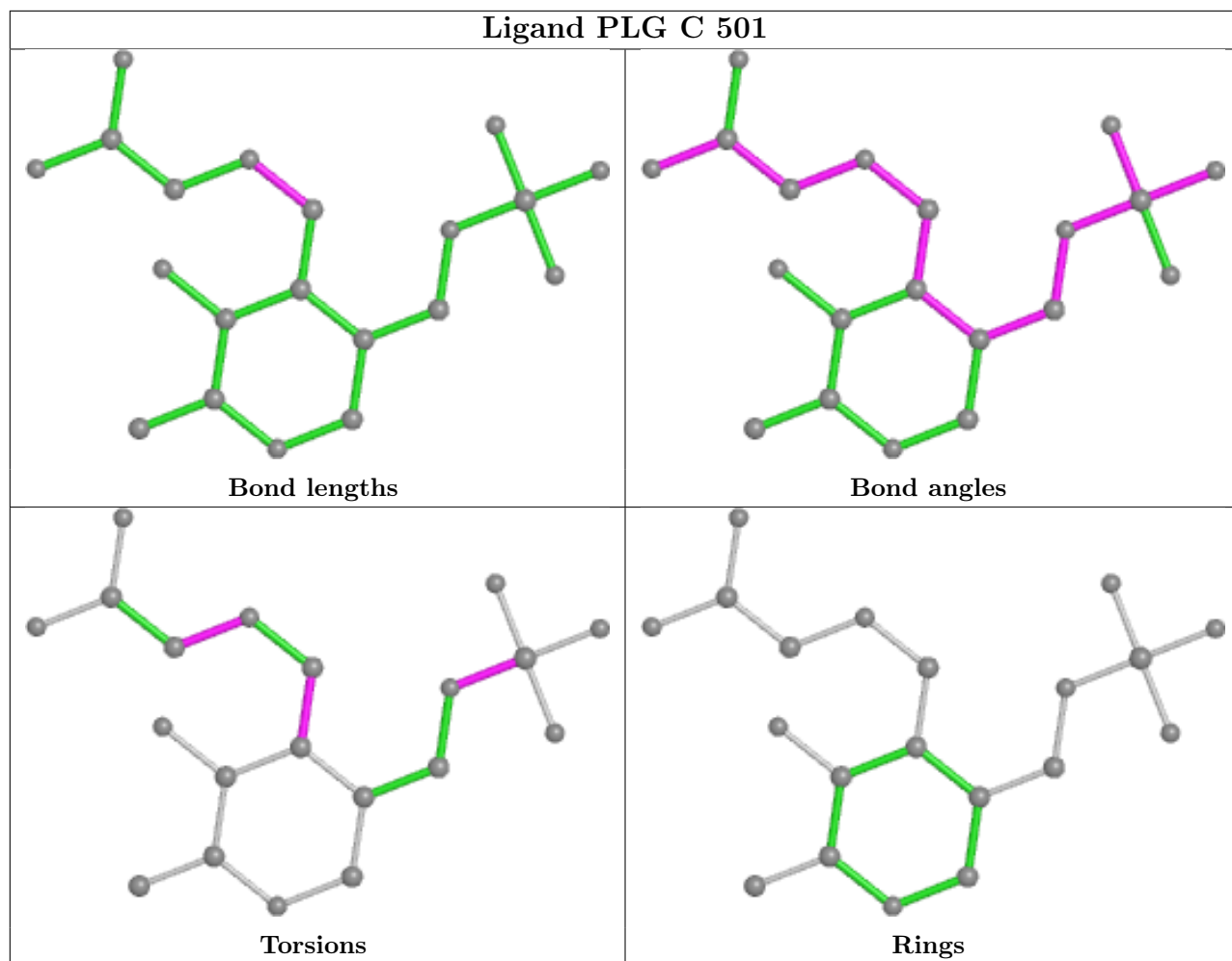
Mol	Chain	Res	Type	Clashes	Symm-Clashes
4	C	503	33G	10	0
4	A	503	33G	9	0

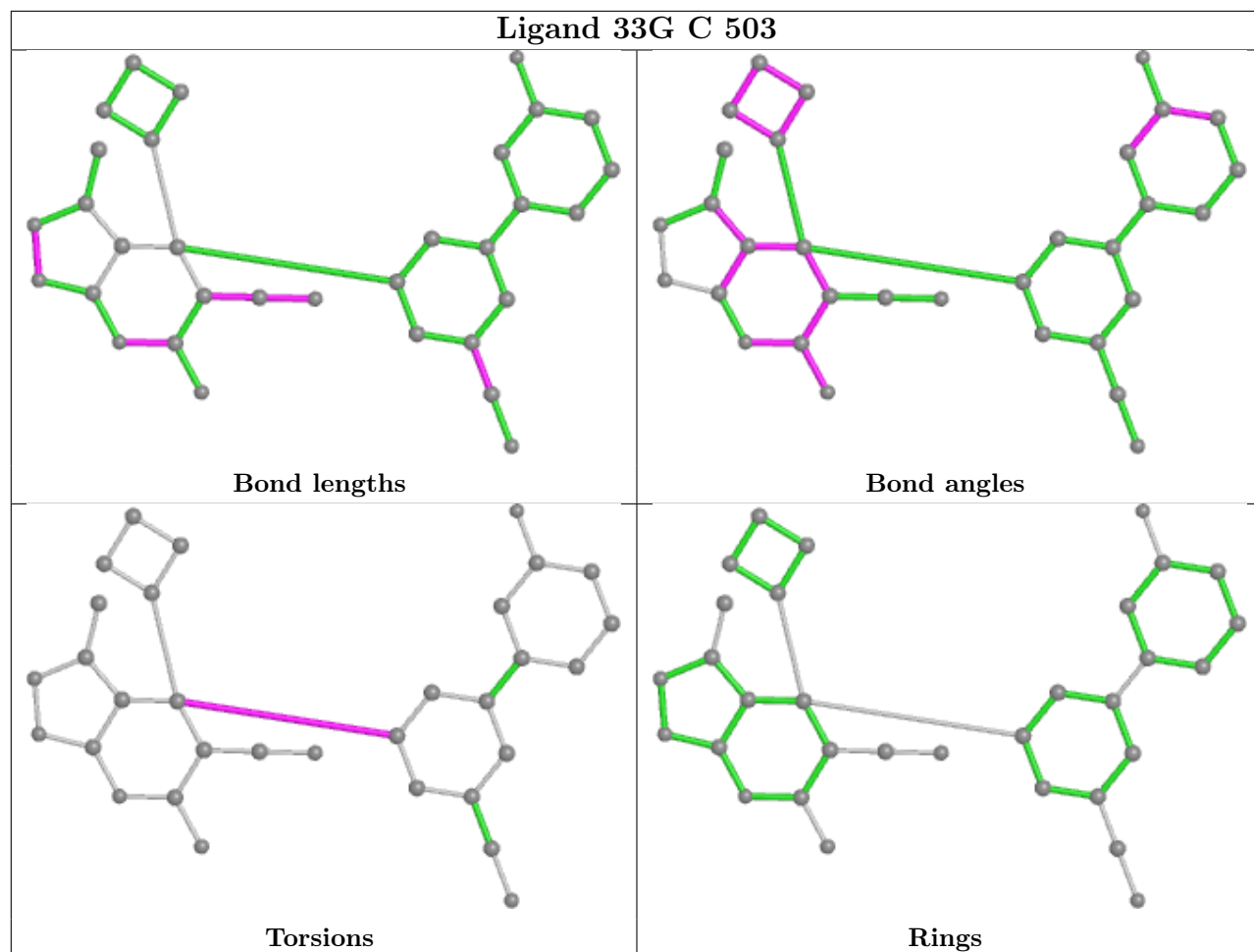
The following is a two-dimensional graphical depiction of Mogul quality analysis of bond lengths, bond angles, torsion angles, and ring geometry for all instances of the Ligand of Interest. In addition, ligands with molecular weight > 250 and outliers as shown on the validation Tables will also be included. For torsion angles, if less than 5% of the Mogul distribution of torsion angles is within 10 degrees of the torsion angle in question, then that torsion angle is considered an outlier. Any bond that is central to one or more torsion angles identified as an outlier by Mogul will be highlighted in the graph. For rings, the root-mean-square deviation (RMSD) between the ring in question and similar rings identified by Mogul is calculated over all ring torsion angles. If the average RMSD is greater than 60 degrees and the minimal RMSD between the ring in question and any Mogul-identified rings is also greater than 60 degrees, then that ring is considered an outlier. The outliers are highlighted in purple. The color gray indicates Mogul did not find sufficient equivalents in the CSD to analyse the geometry.

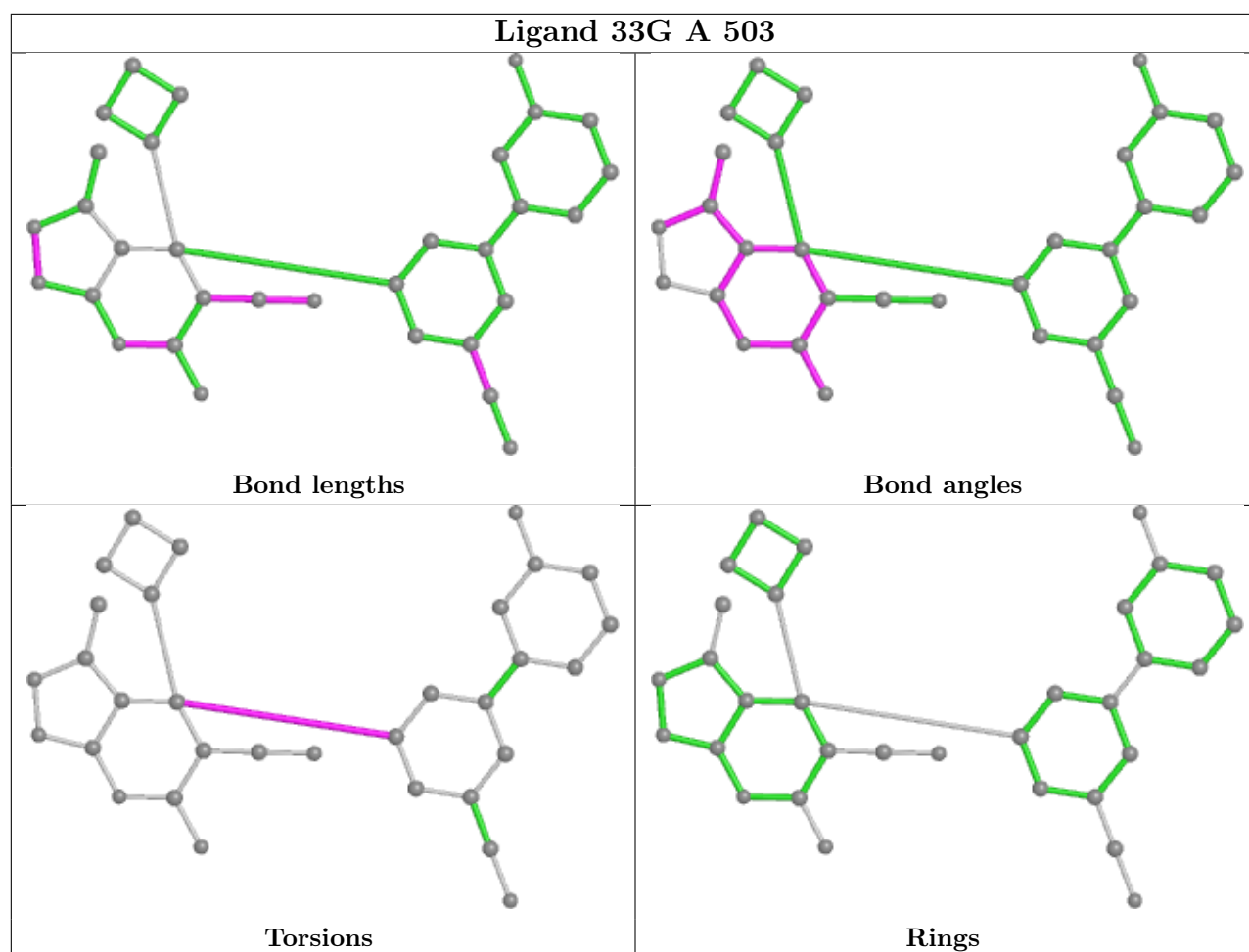












5.7 Other polymers [i](#)

There are no such residues in this entry.

5.8 Polymer linkage issues [i](#)

There are no chain breaks in this entry.

6 Fit of model and data

6.1 Protein, DNA and RNA chains

In the following table, the column labelled ‘#RSRZ > 2’ contains the number (and percentage) of RSRZ outliers, followed by percent RSRZ outliers for the chain as percentile scores relative to all X-ray entries and entries of similar resolution. The OWAB column contains the minimum, median, 95th percentile and maximum values of the occupancy-weighted average B-factor per residue. The column labelled ‘Q < 0.9’ lists the number of (and percentage) of residues with an average occupancy less than 0.9.

Mol	Chain	Analysed	<RSRZ>	#RSRZ>2	OWAB(Å ²)	Q<0.9
1	A	442/442 (100%)	0.35	12 (2%) 54 52	17, 29, 50, 75	0
1	B	442/442 (100%)	0.30	15 (3%) 45 43	16, 29, 50, 77	0
1	C	442/442 (100%)	0.25	16 (3%) 42 41	16, 29, 52, 76	0
All	All	1326/1326 (100%)	0.30	43 (3%) 47 45	16, 29, 51, 77	0

All (43) RSRZ outliers are listed below:

Mol	Chain	Res	Type	RSRZ
1	C	362	VAL	5.6
1	B	365	VAL	4.6
1	A	364	CYS	4.6
1	B	363	ASP	4.4
1	B	362	VAL	4.1
1	B	165	ALA	4.1
1	A	255	PRO	4.1
1	A	365	VAL	4.0
1	B	125	CYS	3.7
1	C	412	LEU	3.2
1	A	410	LYS	3.2
1	C	421	GLY	3.0
1	A	138	LYS	2.9
1	A	363	ASP	2.7
1	B	167	ARG	2.7
1	C	363	ASP	2.6
1	C	365	VAL	2.6
1	C	410	LYS	2.6
1	C	366	SER	2.5
1	C	256	GLY	2.5
1	A	137	GLU	2.4
1	B	357	THR	2.4
1	C	201	VAL	2.4

Continued on next page...

Continued from previous page...

Mol	Chain	Res	Type	RSRZ
1	A	409	GLY	2.4
1	B	64	TYR	2.3
1	B	410	LYS	2.3
1	B	219	ASN	2.3
1	C	442	PRO	2.3
1	B	137	GLU	2.2
1	C	255	PRO	2.2
1	C	413	VAL	2.2
1	A	362	VAL	2.2
1	A	219	ASN	2.1
1	B	255	PRO	2.1
1	B	197	ILE	2.1
1	B	412	LEU	2.1
1	C	411	LYS	2.1
1	C	206	PHE	2.0
1	C	6	PRO	2.0
1	A	201	VAL	2.0
1	C	419	LEU	2.0
1	A	256	GLY	2.0
1	B	136	ASP	2.0

6.2 Non-standard residues in protein, DNA, RNA chains [i](#)

There are no non-standard protein/DNA/RNA residues in this entry.

6.3 Carbohydrates [i](#)

There are no monosaccharides in this entry.

6.4 Ligands [i](#)

In the following table, the Atoms column lists the number of modelled atoms in the group and the number defined in the chemical component dictionary. The B-factors column lists the minimum, median, 95th percentile and maximum values of B factors of atoms in the group. The column labelled 'Q< 0.9' lists the number of atoms with occupancy less than 0.9.

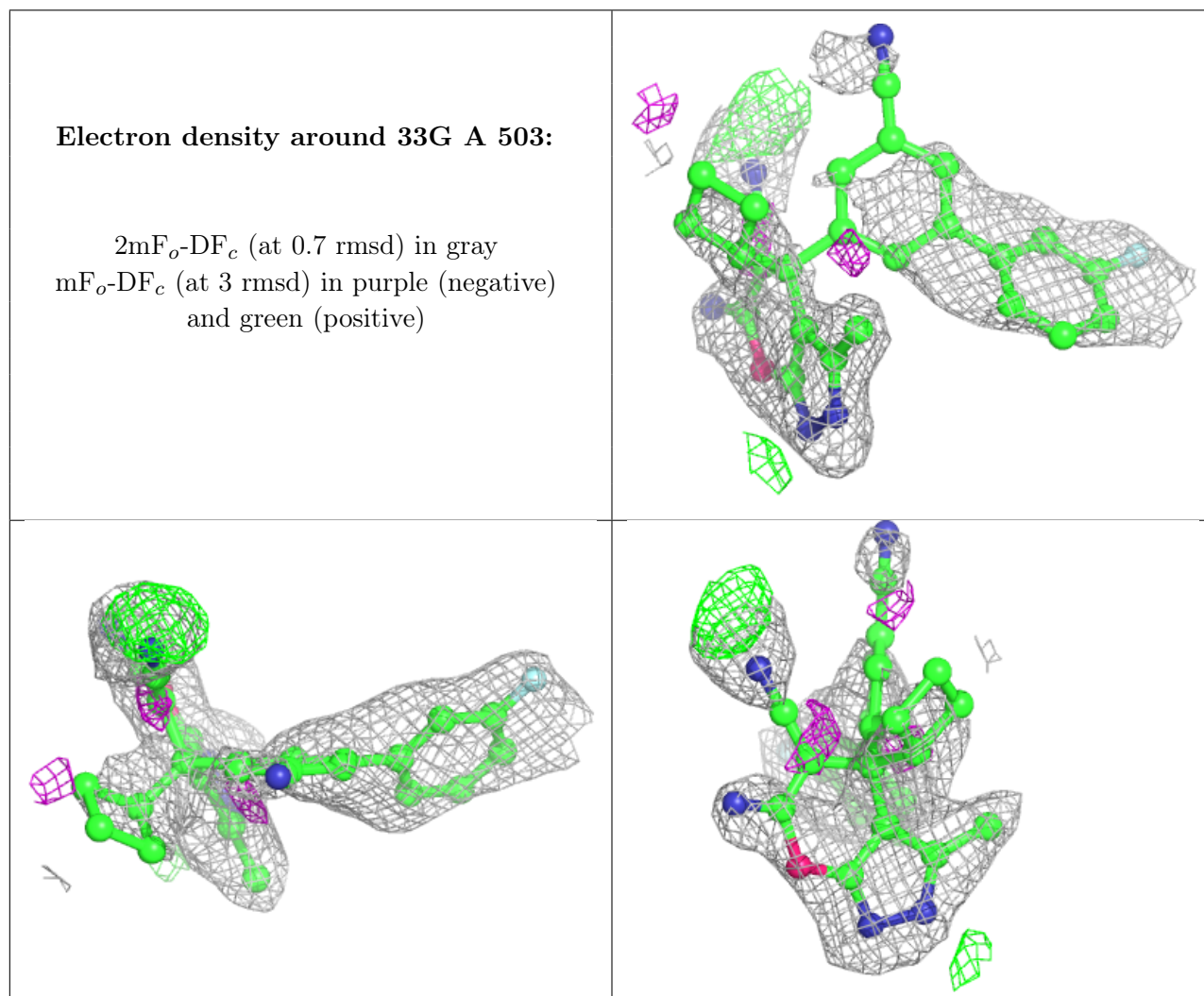
Mol	Type	Chain	Res	Atoms	RSCC	RSR	B-factors(Å ²)	Q<0.9
4	33G	A	503	32/32	0.59	0.32	47,54,61,61	0
4	33G	C	503	32/32	0.60	0.32	53,62,69,73	0
4	33G	B	503	32/32	0.68	0.36	58,63,68,72	0

Continued on next page...

Continued from previous page...

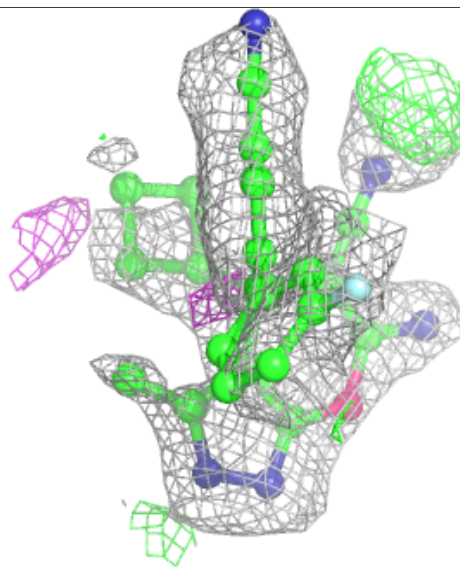
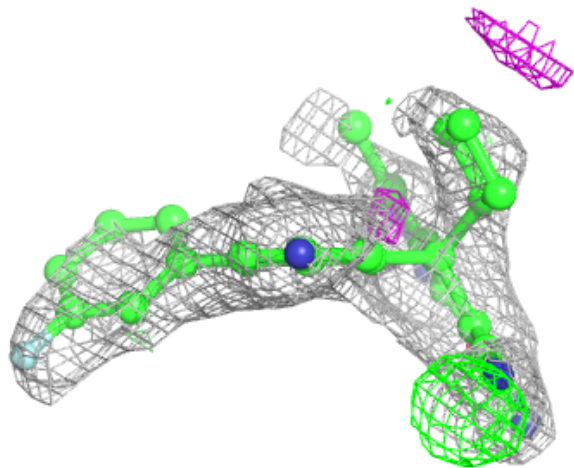
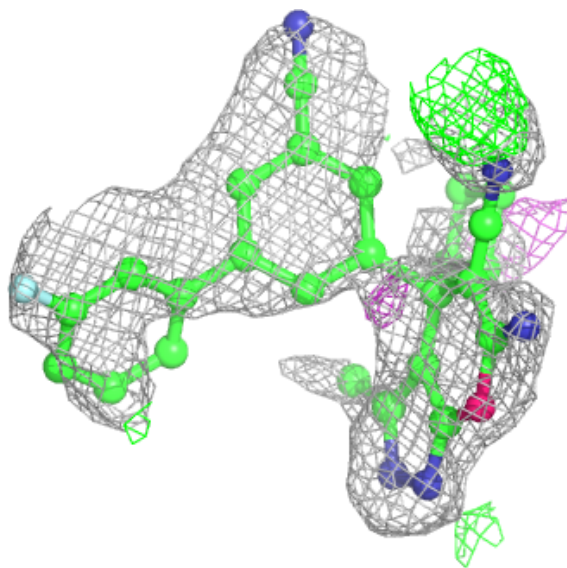
Mol	Type	Chain	Res	Atoms	RSCC	RSR	B-factors(\AA^2)	Q<0.9
3	BME	A	502	4/4	0.79	0.26	47,49,50,51	0
3	BME	B	502	4/4	0.88	0.13	44,47,48,48	0
5	CL	A	504	1/1	0.90	0.10	33,33,33,33	0
2	PLG	A	501	20/20	0.92	0.14	19,24,26,26	0
2	PLG	B	501	20/20	0.94	0.13	18,20,20,20	0
2	PLG	C	501	20/20	0.94	0.11	18,20,22,22	0
3	BME	C	502	4/4	0.95	0.10	40,41,42,42	0
5	CL	C	504	1/1	0.95	0.07	33,33,33,33	1

The following is a graphical depiction of the model fit to experimental electron density of all instances of the Ligand of Interest. In addition, ligands with molecular weight > 250 and outliers as shown on the geometry validation Tables will also be included. Each fit is shown from different orientation to approximate a three-dimensional view.



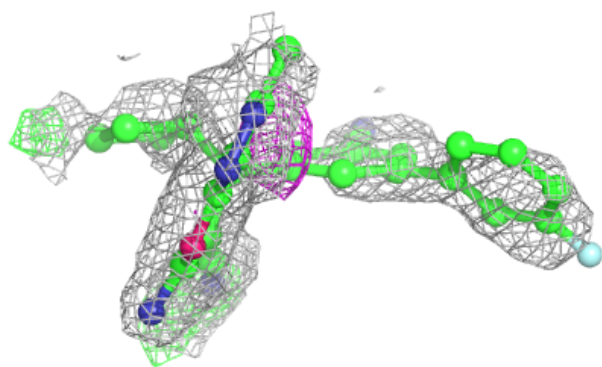
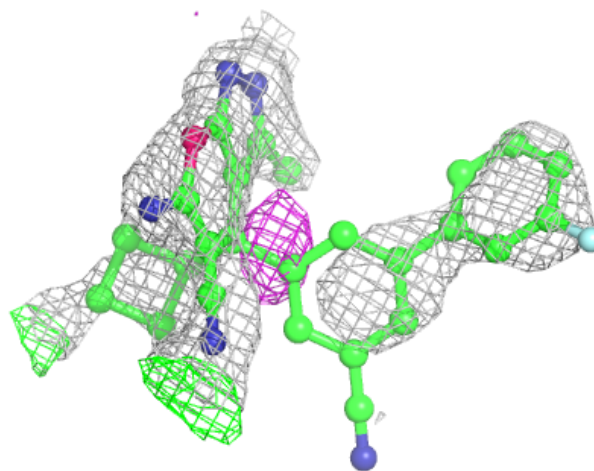
Electron density around 33G C 503:

$2mF_o-DF_c$ (at 0.7 rmsd) in gray
 mF_o-DF_c (at 3 rmsd) in purple (negative)
and green (positive)



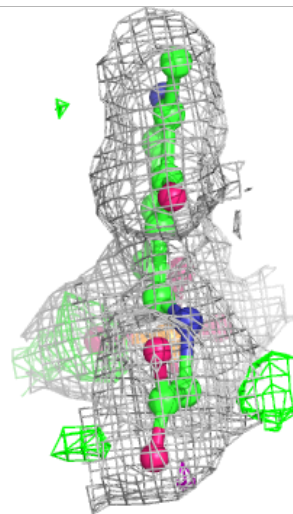
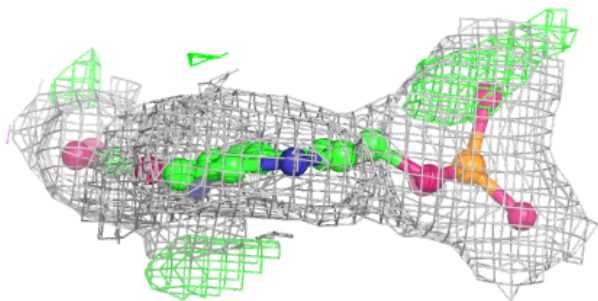
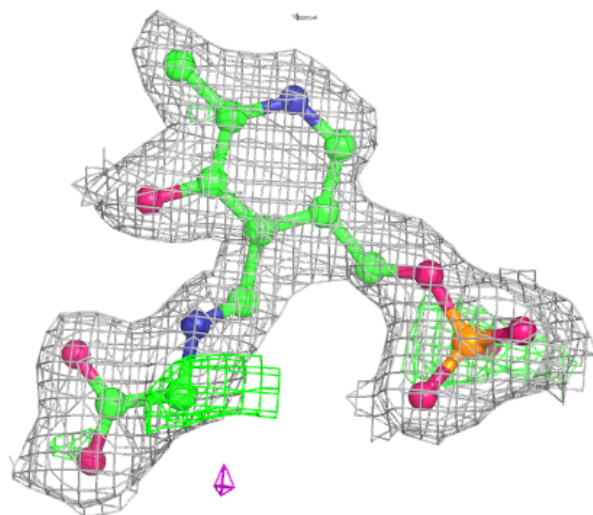
Electron density around 33G B 503:

$2mF_o-DF_c$ (at 0.7 rmsd) in gray
 mF_o-DF_c (at 3 rmsd) in purple (negative)
and green (positive)



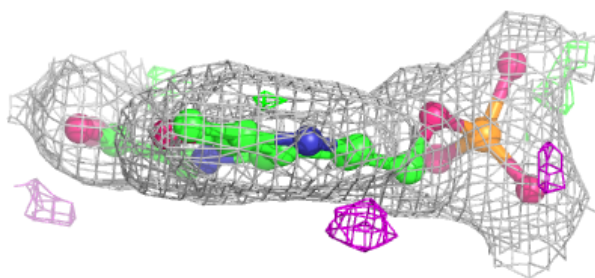
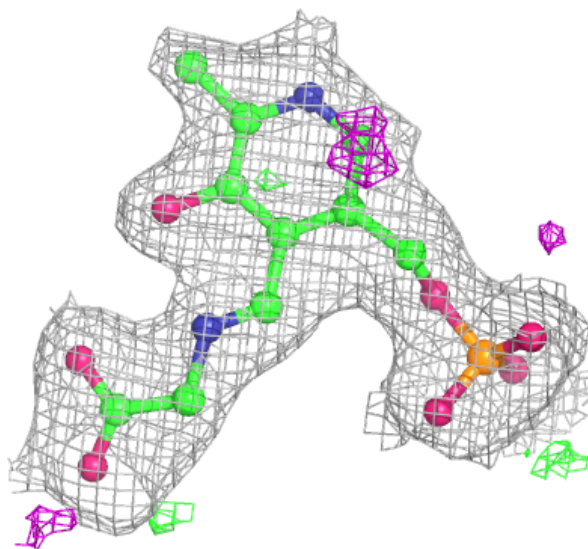
Electron density around PLG A 501:

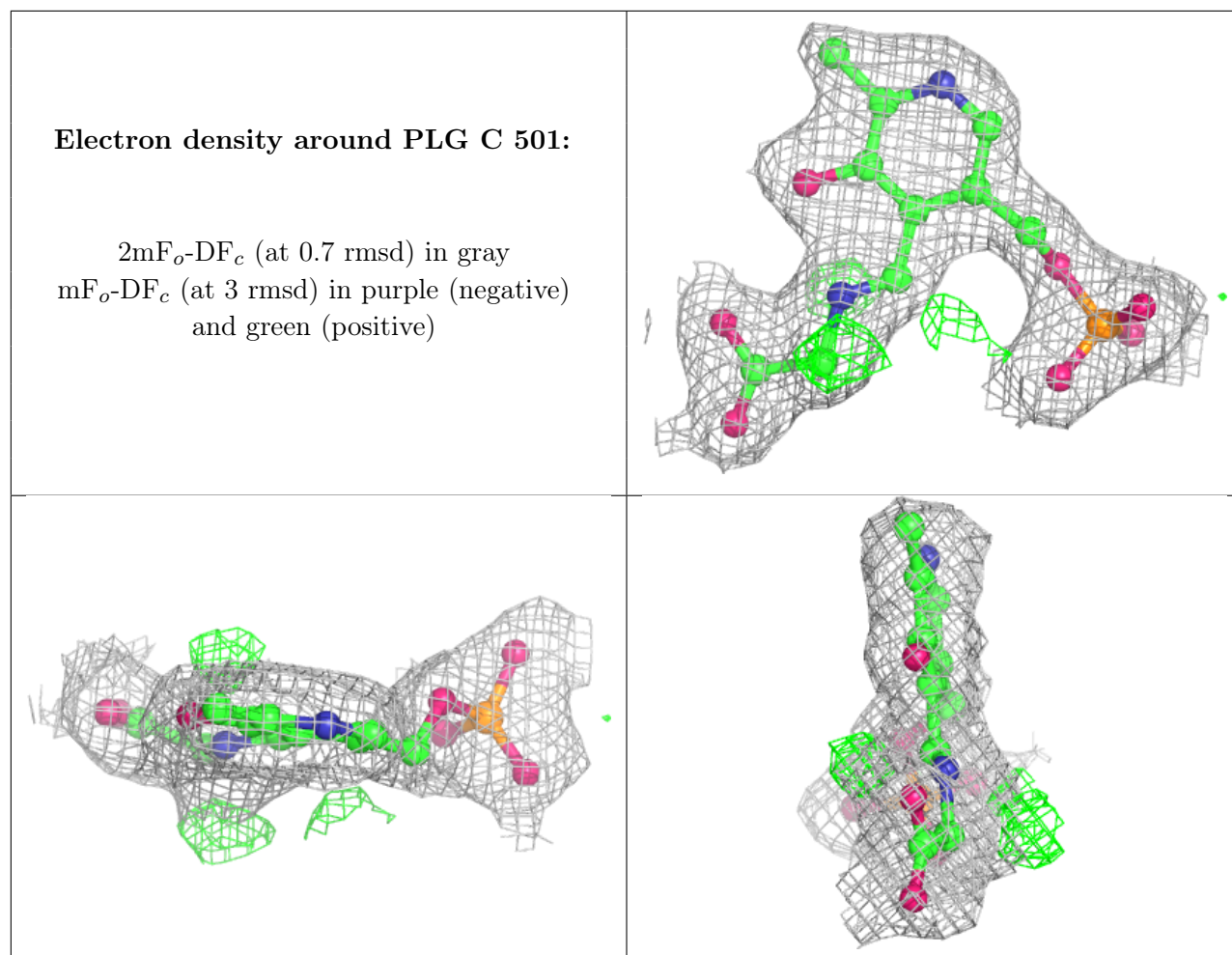
$2mF_o-DF_c$ (at 0.7 rmsd) in gray
 mF_o-DF_c (at 3 rmsd) in purple (negative)
and green (positive)



Electron density around PLG B 501:

$2mF_o-DF_c$ (at 0.7 rmsd) in gray
 mF_o-DF_c (at 3 rmsd) in purple (negative)
and green (positive)





6.5 Other polymers [\(i\)](#)

There are no such residues in this entry.