



wwPDB EM Validation Summary Report ⓘ

Jul 31, 2023 – 12:37 PM EDT

PDB ID : 7RQ6
EMDB ID : EMD-24628
Title : Cryo-EM structure of SARS-CoV-2 spike in complex with non-neutralizing NTD-directed CV3-13 Fab isolated from convalescent individual
Authors : Chen, Y.; Pozharski, E.; Tolbert, W.D.; Pazgier, M.
Deposited on : 2021-08-05
Resolution : 4.18 Å (reported)
Based on initial models : 6VXX, 7C2L

This is a wwPDB EM Validation Summary Report for a publicly released PDB entry.

We welcome your comments at validation@mail.wwpdb.org

A user guide is available at

<https://www.wwpdb.org/validation/2017/EMValidationReportHelp>

with specific help available everywhere you see the ⓘ symbol.

The types of validation reports are described at

<http://www.wwpdb.org/validation/2017/FAQs#types>.

The following versions of software and data (see [references ⓘ](#)) were used in the production of this report:

EMDB validation analysis : 0.0.1.dev50
Mogul : 1.8.5 (274361), CSD as541be (2020)
MolProbity : 4.02b-467
Percentile statistics : 20191225.v01 (using entries in the PDB archive December 25th 2019)
MapQ : 1.9.9
Ideal geometry (proteins) : Engh & Huber (2001)
Ideal geometry (DNA, RNA) : Parkinson et al. (1996)
Validation Pipeline (wwPDB-VP) : 2.34

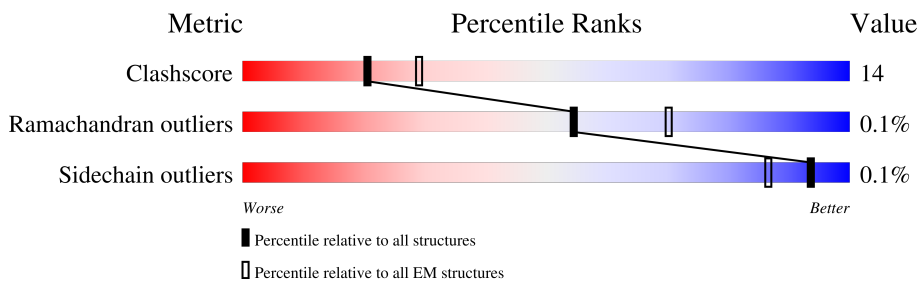
1 Overall quality at a glance

The following experimental techniques were used to determine the structure:

ELECTRON MICROSCOPY

The reported resolution of this entry is 4.18 Å.

Percentile scores (ranging between 0-100) for global validation metrics of the entry are shown in the following graphic. The table shows the number of entries on which the scores are based.



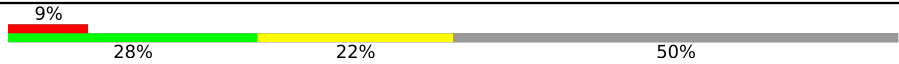
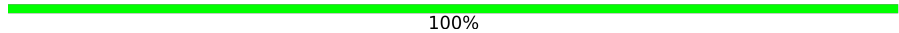
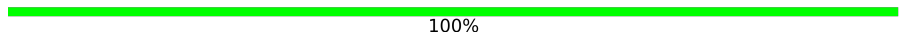
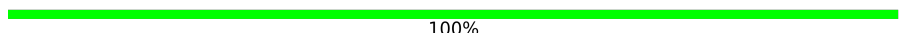
Metric	Whole archive (#Entries)	EM structures (#Entries)
Clashscore	158937	4297
Ramachandran outliers	154571	4023
Sidechain outliers	154315	3826

The table below summarises the geometric issues observed across the polymeric chains and their fit to the map. The red, orange, yellow and green segments of the bar indicate the fraction of residues that contain outliers for ≥ 3 , 2, 1 and 0 types of geometric quality criteria respectively. A grey segment represents the fraction of residues that are not modelled. The numeric value for each fraction is indicated below the corresponding segment, with a dot representing fractions $\leq 5\%$. The upper red bar (where present) indicates the fraction of residues that have poor fit to the EM map (all-atom inclusion $< 40\%$). The numeric value is given above the bar.

Mol	Chain	Length	Quality of chain
1	A	1246	
1	B	1246	
1	C	1246	
2	D	225	
2	H	225	
2	J	225	
3	E	212	
3	K	212	

Continued on next page...

Continued from previous page...

Mol	Chain	Length	Quality of chain
3	L	212	 9% 28% 22% 50%
4	F	2	 100%
4	G	2	 100%
4	I	2	 100%

2 Entry composition i

There are 5 unique types of molecules in this entry. The entry contains 31368 atoms, of which 0 are hydrogens and 0 are deuteriums.

In the tables below, the AltConf column contains the number of residues with at least one atom in alternate conformation and the Trace column contains the number of residues modelled with at most 2 atoms.

- Molecule 1 is a protein called Spike glycoprotein.

Mol	Chain	Residues	Atoms					AltConf	Trace
			Total	C	N	O	S		
1	A	1086	8464	5395	1410	1620	39	0	0
1	B	1086	8464	5395	1410	1620	39	0	0
1	C	1086	8464	5395	1410	1620	39	0	0

There are 141 discrepancies between the modelled and reference sequences:

Chain	Residue	Modelled	Actual	Comment	Reference
A	682	GLY	ARG	conflict	UNP P0DTC2
A	683	SER	ARG	conflict	UNP P0DTC2
A	685	SER	ARG	conflict	UNP P0DTC2
A	817	PRO	PHE	engineered mutation	UNP P0DTC2
A	892	PRO	ALA	engineered mutation	UNP P0DTC2
A	899	PRO	ALA	engineered mutation	UNP P0DTC2
A	942	PRO	ALA	engineered mutation	UNP P0DTC2
A	986	PRO	LYS	engineered mutation	UNP P0DTC2
A	987	PRO	VAL	engineered mutation	UNP P0DTC2
A	1209	GLY	-	expression tag	UNP P0DTC2
A	1210	SER	-	expression tag	UNP P0DTC2
A	1211	GLY	-	expression tag	UNP P0DTC2
A	1212	TYR	-	expression tag	UNP P0DTC2
A	1213	ILE	-	expression tag	UNP P0DTC2
A	1214	PRO	-	expression tag	UNP P0DTC2
A	1215	GLU	-	expression tag	UNP P0DTC2
A	1216	ALA	-	expression tag	UNP P0DTC2
A	1217	PRO	-	expression tag	UNP P0DTC2
A	1218	ARG	-	expression tag	UNP P0DTC2
A	1219	ASP	-	expression tag	UNP P0DTC2
A	1220	GLY	-	expression tag	UNP P0DTC2
A	1221	GLN	-	expression tag	UNP P0DTC2
A	1222	ALA	-	expression tag	UNP P0DTC2
A	1223	TYR	-	expression tag	UNP P0DTC2

Continued on next page...

Continued from previous page...

Chain	Residue	Modelled	Actual	Comment	Reference
A	1224	VAL	-	expression tag	UNP P0DTC2
A	1225	ARG	-	expression tag	UNP P0DTC2
A	1226	LYS	-	expression tag	UNP P0DTC2
A	1227	ASP	-	expression tag	UNP P0DTC2
A	1228	GLY	-	expression tag	UNP P0DTC2
A	1229	GLU	-	expression tag	UNP P0DTC2
A	1230	TRP	-	expression tag	UNP P0DTC2
A	1231	VAL	-	expression tag	UNP P0DTC2
A	1232	LEU	-	expression tag	UNP P0DTC2
A	1233	LEU	-	expression tag	UNP P0DTC2
A	1234	SER	-	expression tag	UNP P0DTC2
A	1235	THR	-	expression tag	UNP P0DTC2
A	1236	PHE	-	expression tag	UNP P0DTC2
A	1237	LEU	-	expression tag	UNP P0DTC2
A	1238	GLY	-	expression tag	UNP P0DTC2
A	1239	ARG	-	expression tag	UNP P0DTC2
A	1240	SER	-	expression tag	UNP P0DTC2
A	1241	LEU	-	expression tag	UNP P0DTC2
A	1242	GLU	-	expression tag	UNP P0DTC2
A	1243	VAL	-	expression tag	UNP P0DTC2
A	1244	LEU	-	expression tag	UNP P0DTC2
A	1245	PHE	-	expression tag	UNP P0DTC2
A	1246	GLN	-	expression tag	UNP P0DTC2
B	682	GLY	ARG	conflict	UNP P0DTC2
B	683	SER	ARG	conflict	UNP P0DTC2
B	685	SER	ARG	conflict	UNP P0DTC2
B	817	PRO	PHE	engineered mutation	UNP P0DTC2
B	892	PRO	ALA	engineered mutation	UNP P0DTC2
B	899	PRO	ALA	engineered mutation	UNP P0DTC2
B	942	PRO	ALA	engineered mutation	UNP P0DTC2
B	986	PRO	LYS	engineered mutation	UNP P0DTC2
B	987	PRO	VAL	engineered mutation	UNP P0DTC2
B	1209	GLY	-	expression tag	UNP P0DTC2
B	1210	SER	-	expression tag	UNP P0DTC2
B	1211	GLY	-	expression tag	UNP P0DTC2
B	1212	TYR	-	expression tag	UNP P0DTC2
B	1213	ILE	-	expression tag	UNP P0DTC2
B	1214	PRO	-	expression tag	UNP P0DTC2
B	1215	GLU	-	expression tag	UNP P0DTC2
B	1216	ALA	-	expression tag	UNP P0DTC2
B	1217	PRO	-	expression tag	UNP P0DTC2
B	1218	ARG	-	expression tag	UNP P0DTC2

Continued on next page...

Continued from previous page...

Chain	Residue	Modelled	Actual	Comment	Reference
B	1219	ASP	-	expression tag	UNP P0DTC2
B	1220	GLY	-	expression tag	UNP P0DTC2
B	1221	GLN	-	expression tag	UNP P0DTC2
B	1222	ALA	-	expression tag	UNP P0DTC2
B	1223	TYR	-	expression tag	UNP P0DTC2
B	1224	VAL	-	expression tag	UNP P0DTC2
B	1225	ARG	-	expression tag	UNP P0DTC2
B	1226	LYS	-	expression tag	UNP P0DTC2
B	1227	ASP	-	expression tag	UNP P0DTC2
B	1228	GLY	-	expression tag	UNP P0DTC2
B	1229	GLU	-	expression tag	UNP P0DTC2
B	1230	TRP	-	expression tag	UNP P0DTC2
B	1231	VAL	-	expression tag	UNP P0DTC2
B	1232	LEU	-	expression tag	UNP P0DTC2
B	1233	LEU	-	expression tag	UNP P0DTC2
B	1234	SER	-	expression tag	UNP P0DTC2
B	1235	THR	-	expression tag	UNP P0DTC2
B	1236	PHE	-	expression tag	UNP P0DTC2
B	1237	LEU	-	expression tag	UNP P0DTC2
B	1238	GLY	-	expression tag	UNP P0DTC2
B	1239	ARG	-	expression tag	UNP P0DTC2
B	1240	SER	-	expression tag	UNP P0DTC2
B	1241	LEU	-	expression tag	UNP P0DTC2
B	1242	GLU	-	expression tag	UNP P0DTC2
B	1243	VAL	-	expression tag	UNP P0DTC2
B	1244	LEU	-	expression tag	UNP P0DTC2
B	1245	PHE	-	expression tag	UNP P0DTC2
B	1246	GLN	-	expression tag	UNP P0DTC2
C	682	GLY	ARG	conflict	UNP P0DTC2
C	683	SER	ARG	conflict	UNP P0DTC2
C	685	SER	ARG	conflict	UNP P0DTC2
C	817	PRO	PHE	engineered mutation	UNP P0DTC2
C	892	PRO	ALA	engineered mutation	UNP P0DTC2
C	899	PRO	ALA	engineered mutation	UNP P0DTC2
C	942	PRO	ALA	engineered mutation	UNP P0DTC2
C	986	PRO	LYS	engineered mutation	UNP P0DTC2
C	987	PRO	VAL	engineered mutation	UNP P0DTC2
C	1209	GLY	-	expression tag	UNP P0DTC2
C	1210	SER	-	expression tag	UNP P0DTC2
C	1211	GLY	-	expression tag	UNP P0DTC2
C	1212	TYR	-	expression tag	UNP P0DTC2
C	1213	ILE	-	expression tag	UNP P0DTC2

Continued on next page...

Continued from previous page...

Chain	Residue	Modelled	Actual	Comment	Reference
C	1214	PRO	-	expression tag	UNP P0DTC2
C	1215	GLU	-	expression tag	UNP P0DTC2
C	1216	ALA	-	expression tag	UNP P0DTC2
C	1217	PRO	-	expression tag	UNP P0DTC2
C	1218	ARG	-	expression tag	UNP P0DTC2
C	1219	ASP	-	expression tag	UNP P0DTC2
C	1220	GLY	-	expression tag	UNP P0DTC2
C	1221	GLN	-	expression tag	UNP P0DTC2
C	1222	ALA	-	expression tag	UNP P0DTC2
C	1223	TYR	-	expression tag	UNP P0DTC2
C	1224	VAL	-	expression tag	UNP P0DTC2
C	1225	ARG	-	expression tag	UNP P0DTC2
C	1226	LYS	-	expression tag	UNP P0DTC2
C	1227	ASP	-	expression tag	UNP P0DTC2
C	1228	GLY	-	expression tag	UNP P0DTC2
C	1229	GLU	-	expression tag	UNP P0DTC2
C	1230	TRP	-	expression tag	UNP P0DTC2
C	1231	VAL	-	expression tag	UNP P0DTC2
C	1232	LEU	-	expression tag	UNP P0DTC2
C	1233	LEU	-	expression tag	UNP P0DTC2
C	1234	SER	-	expression tag	UNP P0DTC2
C	1235	THR	-	expression tag	UNP P0DTC2
C	1236	PHE	-	expression tag	UNP P0DTC2
C	1237	LEU	-	expression tag	UNP P0DTC2
C	1238	GLY	-	expression tag	UNP P0DTC2
C	1239	ARG	-	expression tag	UNP P0DTC2
C	1240	SER	-	expression tag	UNP P0DTC2
C	1241	LEU	-	expression tag	UNP P0DTC2
C	1242	GLU	-	expression tag	UNP P0DTC2
C	1243	VAL	-	expression tag	UNP P0DTC2
C	1244	LEU	-	expression tag	UNP P0DTC2
C	1245	PHE	-	expression tag	UNP P0DTC2
C	1246	GLN	-	expression tag	UNP P0DTC2

- Molecule 2 is a protein called CV3-13 Fab heavy chain.

Mol	Chain	Residues	Atoms				AltConf	Trace	
			Total	C	N	O			S
2	H	124	966	614	158	191	3	0	0
2	D	124	966	614	158	191	3	0	0
2	J	124	966	614	158	191	3	0	0

- Molecule 3 is a protein called CV3-13 Fab light chain.

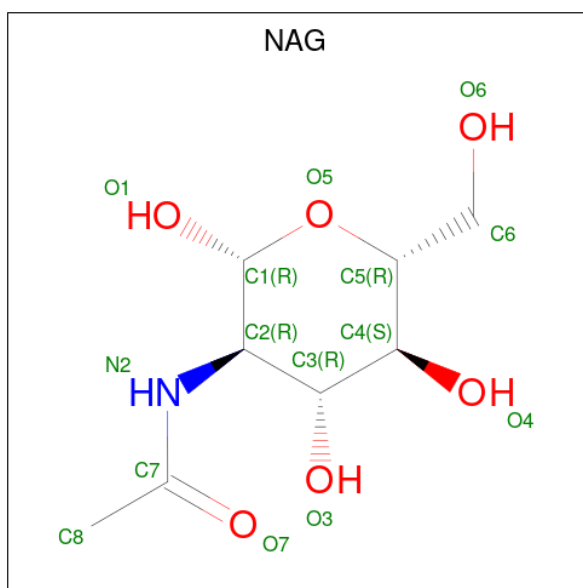
Mol	Chain	Residues	Atoms					AltConf	Trace
			Total	C	N	O	S		
3	L	107	Total 830	C 527	N 135	O 165	S 3	0	0
3	E	107	Total 830	C 527	N 135	O 165	S 3	0	0
3	K	107	Total 830	C 527	N 135	O 165	S 3	0	0

- Molecule 4 is an oligosaccharide called 2-acetamido-2-deoxy-beta-D-glucopyranose-(1-4)-2-acetamido-2-deoxy-beta-D-glucopyranose.



Mol	Chain	Residues	Atoms				AltConf	Trace
			Total	C	N	O		
4	F	2	Total 28	C 16	N 2	O 10	0	0
4	G	2	Total 28	C 16	N 2	O 10	0	0
4	I	2	Total 28	C 16	N 2	O 10	0	0

- Molecule 5 is 2-acetamido-2-deoxy-beta-D-glucopyranose (three-letter code: NAG) (formula: $C_8H_{15}NO_6$).



Mol	Chain	Residues	Atoms				AltConf
5	A	1	Total	C	N	O	0
			14	8	1	5	
5	A	1	Total	C	N	O	0
			14	8	1	5	
5	A	1	Total	C	N	O	0
			14	8	1	5	
5	A	1	Total	C	N	O	0
			14	8	1	5	
5	A	1	Total	C	N	O	0
			14	8	1	5	
5	A	1	Total	C	N	O	0
			14	8	1	5	
5	A	1	Total	C	N	O	0
			14	8	1	5	
5	A	1	Total	C	N	O	0
			14	8	1	5	
5	A	1	Total	C	N	O	0
			14	8	1	5	
5	A	1	Total	C	N	O	0
			14	8	1	5	
5	A	1	Total	C	N	O	0
			14	8	1	5	
5	B	1	Total	C	N	O	0
			14	8	1	5	
5	B	1	Total	C	N	O	0
			14	8	1	5	
5	B	1	Total	C	N	O	0
			14	8	1	5	
5	B	1	Total	C	N	O	0
			14	8	1	5	
5	B	1	Total	C	N	O	0
			14	8	1	5	
5	B	1	Total	C	N	O	0
			14	8	1	5	
5	B	1	Total	C	N	O	0
			14	8	1	5	
5	B	1	Total	C	N	O	0
			14	8	1	5	
5	B	1	Total	C	N	O	0
			14	8	1	5	

Continued on next page...

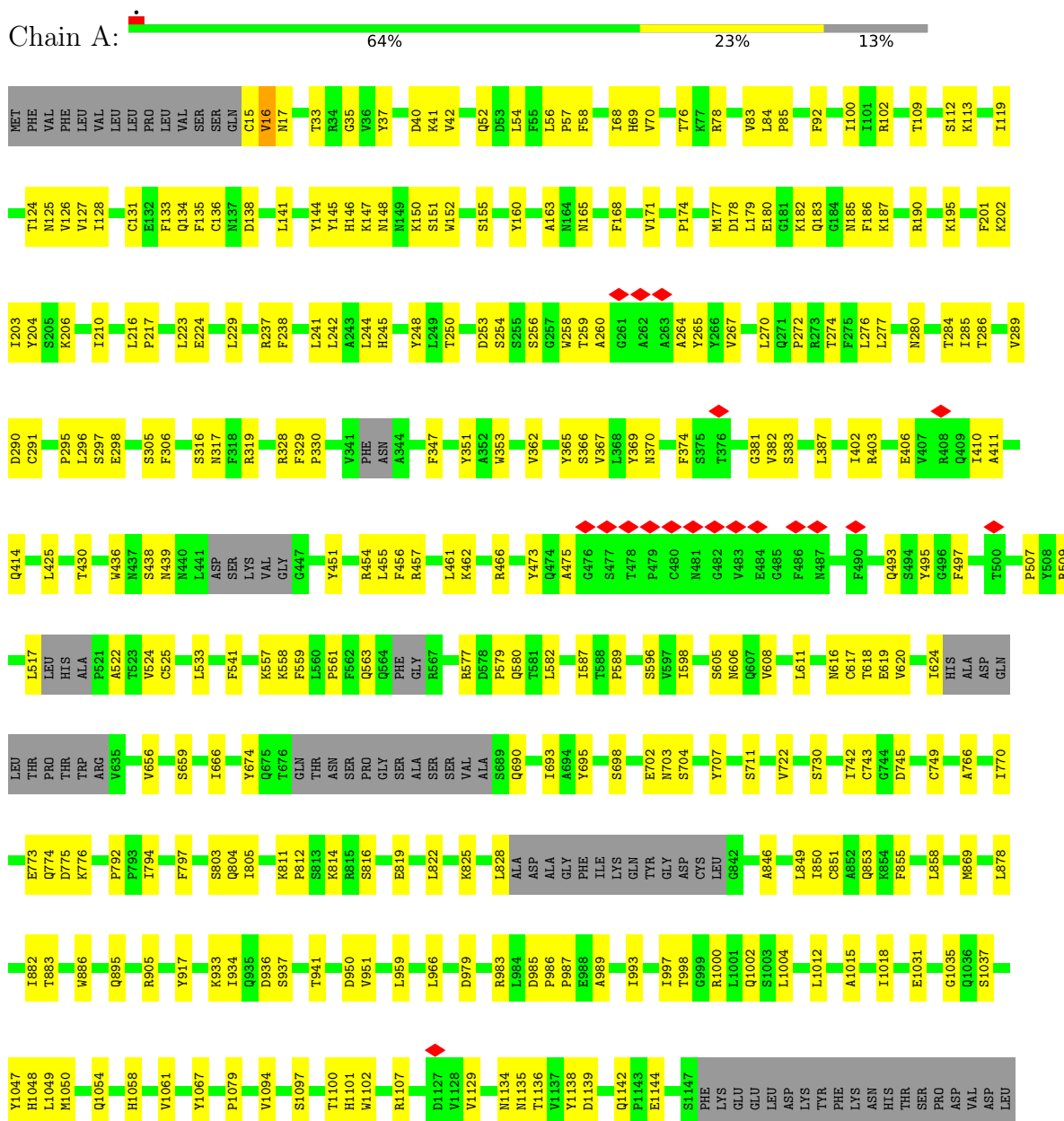
Continued from previous page...

Mol	Chain	Residues	Atoms				AltConf
			Total	C	N	O	
5	B	1	Total 14	8	1	5	0
5	B	1	Total 14	8	1	5	0
5	C	1	Total 14	8	1	5	0
5	C	1	Total 14	8	1	5	0
5	C	1	Total 14	8	1	5	0
5	C	1	Total 14	8	1	5	0
5	C	1	Total 14	8	1	5	0
5	C	1	Total 14	8	1	5	0
5	C	1	Total 14	8	1	5	0
5	C	1	Total 14	8	1	5	0
5	C	1	Total 14	8	1	5	0
5	C	1	Total 14	8	1	5	0
5	C	1	Total 14	8	1	5	0
5	C	1	Total 14	8	1	5	0
5	C	1	Total 14	8	1	5	0
5	C	1	Total 14	8	1	5	0

3 Residue-property plots

These plots are drawn for all protein, RNA, DNA and oligosaccharide chains in the entry. The first graphic for a chain summarises the proportions of the various outlier classes displayed in the second graphic. The second graphic shows the sequence view annotated by issues in geometry and atom inclusion in map density. Residues are color-coded according to the number of geometric quality criteria for which they contain at least one outlier: green = 0, yellow = 1, orange = 2 and red = 3 or more. A red diamond above a residue indicates a poor fit to the EM map for this residue (all-atom inclusion < 40%). Stretches of 2 or more consecutive residues without any outlier are shown as a green connector. Residues present in the sample, but not in the model, are shown in grey.

• Molecule 1: Spike glycoprotein



GLY	ASP	ILE	SER	TRP	VAL	LEU	LEU	ASN	ALA	VAL	VAL	VAL	VAL	LEU	LEU	ASP	ARG	LEU	ASN	ASN	ASN	GLY	GLY	TYR	GLY	GLN	GLY	SER	SER	TYR	ILE	PRO	PRO	GLY	ALA	PRO	ARG	ASP	ASP	GLY	GLN	ALA	TYR	VAL	ARG	LYS	
ASP	GLY	GLU	TRP	GLY	VAL	LEU	LEU	SER	THR	PHE	VAL	LEU	LEU	GLY	ARG	GLY	SER	SER	GLN	SER	LEU	LEU	GLY	LYS	TYR	GLY	GLN	GLY	SER	GLY	TYR	ILE	PRO	PRO	GLY	ALA	PRO	ARG	ASP	ASP	GLY	GLN	ALA	TYR	VAL	ARG	LYS

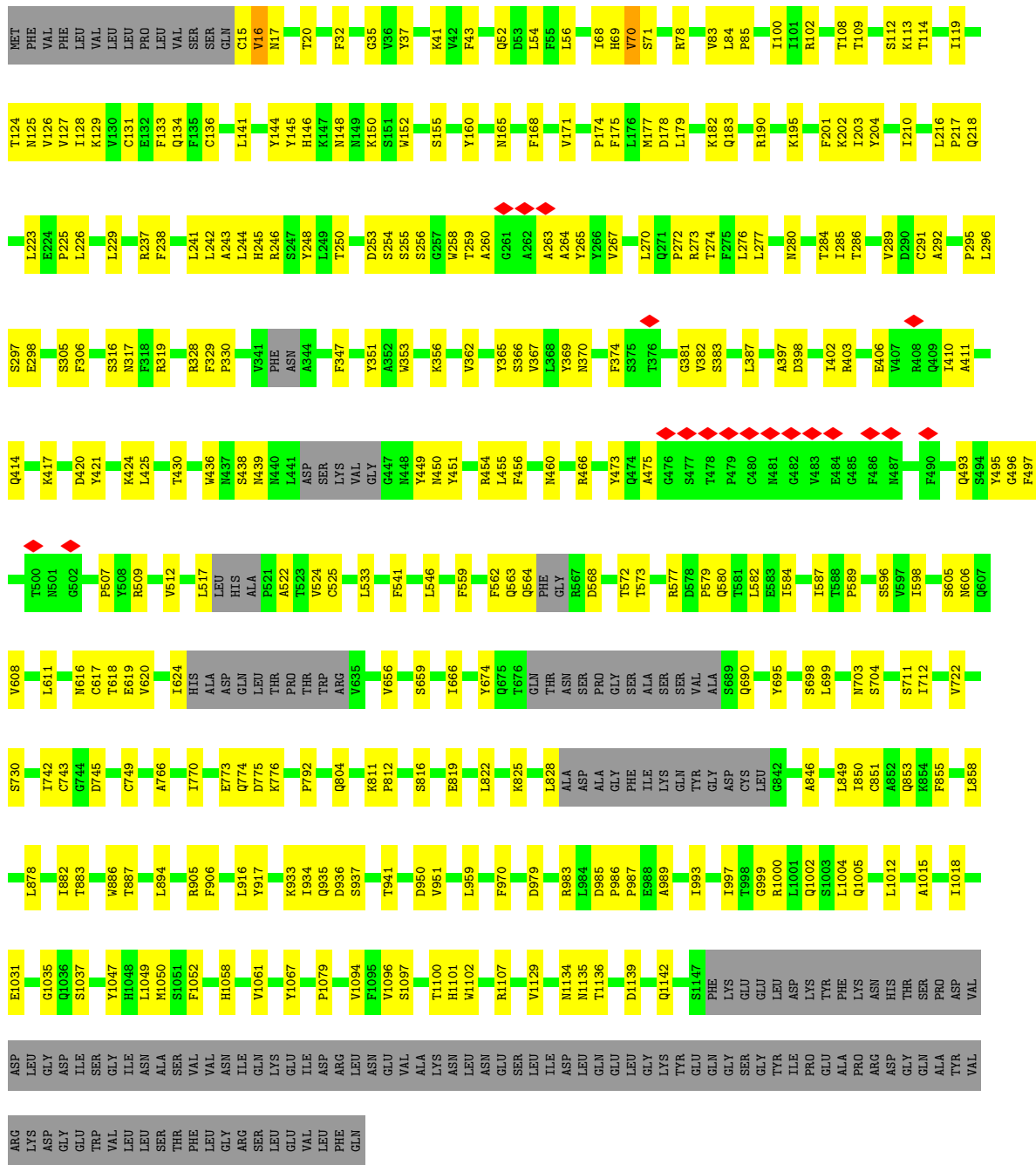
● Molecule 1: Spike glycoprotein



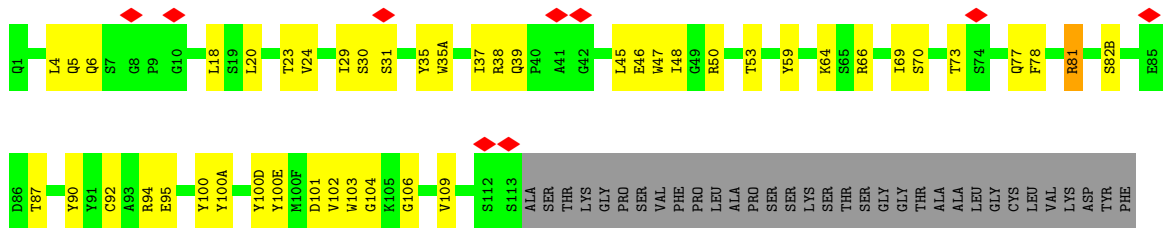
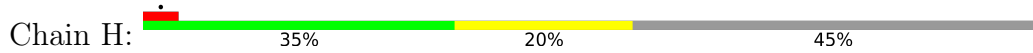
MET	PHE	VAL	PHE	PHE	VAL	LEU	LEU	VAL	LEU	PRO	SER	VAL	LEU	VAL	SER	ASN	SER	GLN	C15	C16	C17	C18	T33	R34	C35	V36	F37	T38	R39	F40	F41	F42	F43	F44	Q52	D53	L54	F55	L56	P57	F58	V62	I68	H69	V70	S71	G72	T76	K77	R78	V83	L84	P85	F92	I100	I101	R102	G103	G104																																											
T109	S112	K113	T114	Q115	L118	I119	V120	T124	N125	V126	V127	I128	K129	V130	C131	E132	F133	Q134	F135	C136	N137	D138	L141	Y144	Y145	H146	K147	N148	N149	K150	S153	W152	S155	V70	Y160	N165	W253	S254	S255	S256	Q257	W258	T259	A260	Q261	A262	A263	A264	Y265	M177	D178	L179	Q183	G184	N185	F186	K187	R190	K195	K202	L203	Y204	S205	K206	T210	L216	P217	E298	S305	F306	S316	N317	F318	R319	R328	F329	P330	Y341	PHE	ASN	A344	F347	Y351	A352	W353	V362	Y365	S366	V367	L368	Y369	N370	F374	S375	T376	G381	V382	S383	R272	R273	L387	F275
L276	L277	N280	T284	L285	T286	V289	D290	C291	P295	L296	S297	E298	S305	F306	S316	N317	F318	R319	R328	F329	P330	Y341	PHE	ASN	A344	F347	Y351	A352	W353	V362	Y365	S366	V367	L368	Y369	N370	F374	S375	T376	G381	V382	S383	R272	R273	L387	F275																																																								
D398	T402	R403	E406	Y407	R408	Q409	I410	A411	Q414	K417	Y421	L425	T430	W436	W437	S438	N439	M440	L441	ASP	SER	LYS	VAL	GLY	G447	M448	Y449	M450	Y451	R454	L455	F456	R457	L461	R466	Y473	Q474	A475	G476	S477	T478	C480	M481	G482	V483	E484																																																								
G485	F486	M487	F490	Q493	S494	Y495	G496	F497	T500	N501	G502	P507	F508	R509	V512	L517	LEU	HIS	ALA	ALA	P521	A522	F523	V524	C525	L533	F541	M544	G545	L546	K557	K558	F559	L560	P561	ASN	F562	Q563	Q564	PHE	GLY	R567	T573	R577	D578	P579	O580	T581	L582																																																					
I587	T588	P589	S596	Y597	L598	S605	N606	G607	V608	L611	N616	C617	T618	E619	V620	I624	HIS	ALA	ASP	GLN	ALA	LEU	THR	THR	TRP	ARG	V635	V656	S659	T666	Y674	Q675	T676	GLN	THR	ASN	ASN	SER	PRO	GLY	SER	ALA	ALA	S689	Q690	Y695																																																								
S696	N703	S704	I720	S721	S722	S730	I742	C743	G744	D745	C749	L763	A766	I770	E773	Q774	D775	K776	K790	T791	F792	P793	I794	F797	F802	S803	Q804	I805	K811	P812	S816	D950	N1135	D979	R983	L984	D985	P986	P987	L822	K825	L828	ALA	ASP	GLY	ALA	PHE																																																							
ILE	LYS	GLN	TYR	GLY	ASP	CYS	LEU	G842	A846	R847	D848	L849	R850	C851	F855	L876	T882	T883	W886	Q895	I896	P897	R905	Y917	E918	N919	I923	K933	I934	Q935	D936	S937	T941	D950	N1135	D979	R983	L984	D985	P986	P987	L822	K825	L828	ALA	ASP	GLY	ALA	PHE																																																					
T998	V1008	L1012	A1015	I1018	E1031	G1035	Q1036	S1037	K1038	Y1047	H1048	L1049	Q1054	H1058	V1061	Y1067	P1079	A1080	V1094	S1097	T1100	H1101	W1102	R1107	V1129	I1132	V1133	N1134	N1135	T1136	D1139	Q1142	S1147	PHE	LYS	GLY	GLU	PHE	LYS	TYR	GLU	GLN	GLY	GLY	GLY	GLY	LEU	TYR																																																						
ASP	LYS	TYR	PHE	ASN	ASP	HIS	THR	SER	GLN	ALA	PRO	TYR	ASP	VAL	ASP	LEU	GLY	ASP	ASP	ILE	TRP	VAL	LEU	ILE	ASN	SER	ALA	SER	ALA	VAL	VAL	ASN	ILE	GLN	GLU	GLY	ASP	ARG	LEU	ASN	ASN	VAL	ALA	ASN	ASN	LEU	ASN	ASN	GLY	GLY	GLY	GLY	LEU	TYR																																																
ILE	PRO	GLU	ALA	PRO	PRO	ARG	ASP	GLY	GLN	ALA	TYR	VAL	VAL	VAL	ASP	LEU	ASP	ASP	ILE	TRP	VAL	LEU	ILE	ASN	SER	ALA	SER	ALA	VAL	VAL	ASN	ILE	GLN	GLU	GLY	ASP	ARG	LEU	ASN	ASN	VAL	ALA	ASN	ASN	LEU	ASN	ASN	GLY	GLY	GLY	GLY	LEU	TYR																																																	

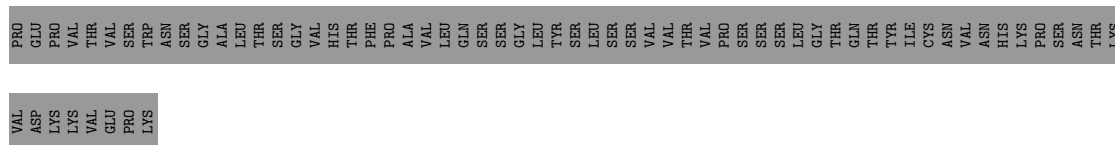
● Molecule 1: Spike glycoprotein



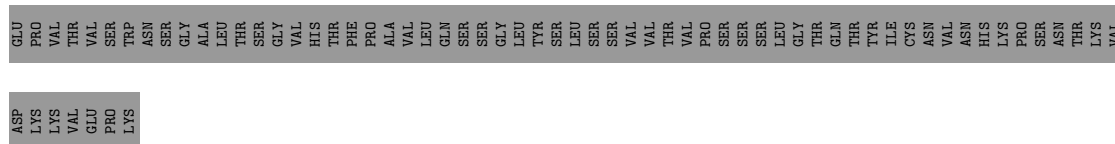
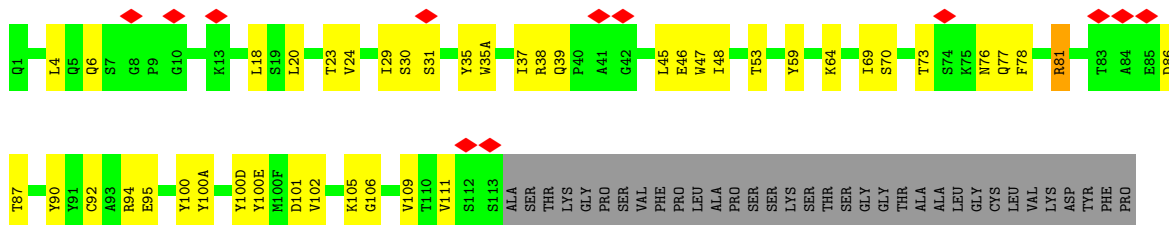
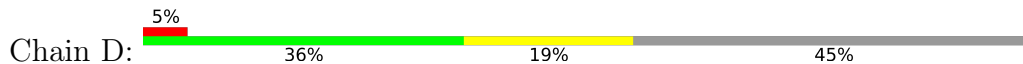


• Molecule 2: CV3-13 Fab heavy chain

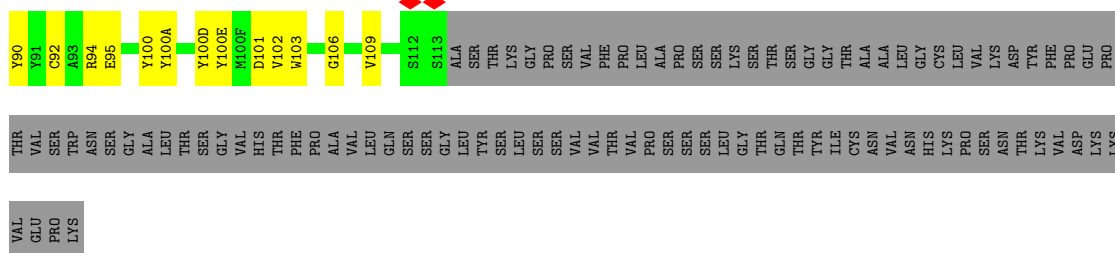
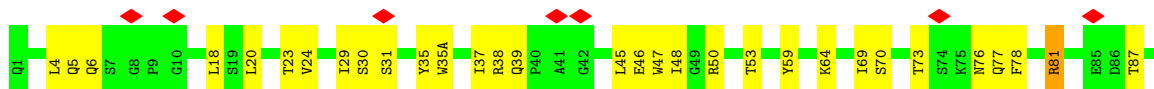
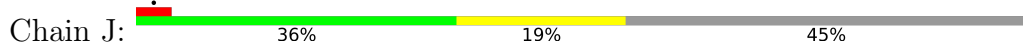




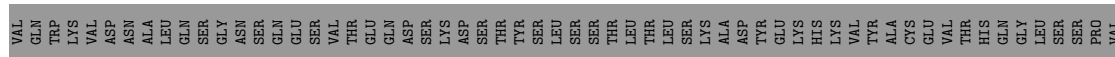
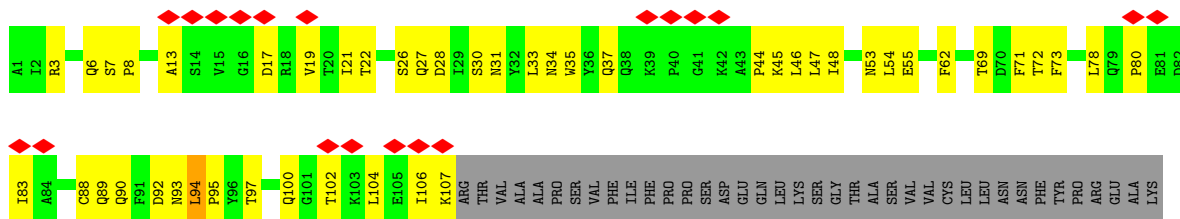
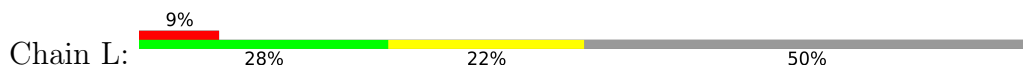
● Molecule 2: CV3-13 Fab heavy chain



● Molecule 2: CV3-13 Fab heavy chain

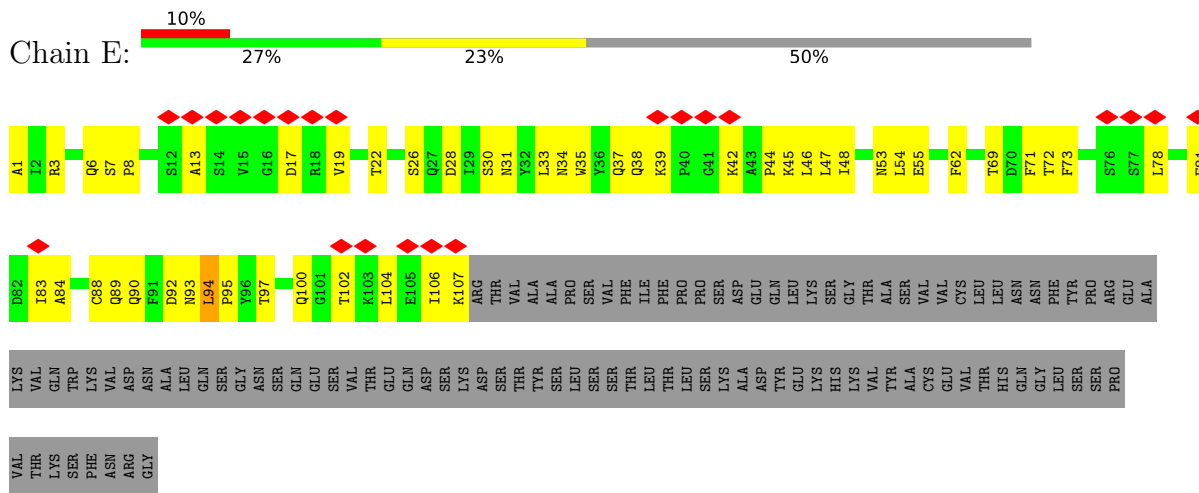


● Molecule 3: CV3-13 Fab light chain

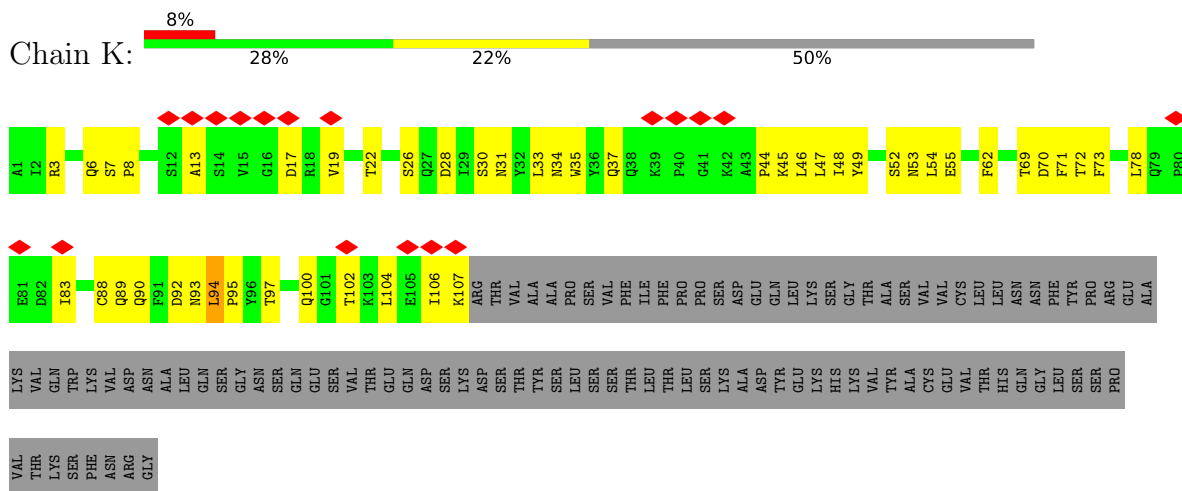


THR
LYS
SER
PHE
ASN
ARG
GLY

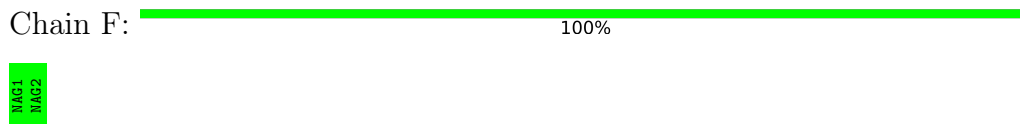
- Molecule 3: CV3-13 Fab light chain



- Molecule 3: CV3-13 Fab light chain



- Molecule 4: 2-acetamido-2-deoxy-beta-D-glucofuranose-(1-4)-2-acetamido-2-deoxy-beta-D-glucofuranose



- Molecule 4: 2-acetamido-2-deoxy-beta-D-glucofuranose-(1-4)-2-acetamido-2-deoxy-beta-D-glucofuranose



- Molecule 4: 2-acetamido-2-deoxy-beta-D-glucofuranose-(1-4)-2-acetamido-2-deoxy-beta-D-glucopyranose

Chain I:

100%

1AC2
1AC2

4 Experimental information

Property	Value	Source
EM reconstruction method	SINGLE PARTICLE	Depositor
Imposed symmetry	POINT, C3	Depositor
Number of particles used	150882	Depositor
Resolution determination method	FSC 0.143 CUT-OFF	Depositor
CTF correction method	PHASE FLIPPING AND AMPLITUDE CORRECTION	Depositor
Microscope	TFS GLACIOS	Depositor
Voltage (kV)	200	Depositor
Electron dose ($e^-/\text{\AA}^2$)	42.1531	Depositor
Minimum defocus (nm)	Not provided	
Maximum defocus (nm)	Not provided	
Magnification	Not provided	
Image detector	GATAN K3 BIOQUANTUM (6k x 4k)	Depositor
Maximum map value	1.810	Depositor
Minimum map value	-1.335	Depositor
Average map value	-0.001	Depositor
Map value standard deviation	0.029	Depositor
Recommended contour level	0.15	Depositor
Map size (Å)	455.3216, 455.3216, 455.3216	wwPDB
Map dimensions	512, 512, 512	wwPDB
Map angles (°)	90.0, 90.0, 90.0	wwPDB
Pixel spacing (Å)	0.8893, 0.8893, 0.8893	Depositor

5 Model quality

5.1 Standard geometry

Bond lengths and bond angles in the following residue types are not validated in this section: NAG

The Z score for a bond length (or angle) is the number of standard deviations the observed value is removed from the expected value. A bond length (or angle) with $|Z| > 5$ is considered an outlier worth inspection. RMSZ is the root-mean-square of all Z scores of the bond lengths (or angles).

Mol	Chain	Bond lengths		Bond angles	
		RMSZ	# $ Z > 5$	RMSZ	# $ Z > 5$
1	A	0.30	0/8658	0.51	0/11787
1	B	0.30	0/8658	0.52	0/11787
1	C	0.31	0/8658	0.52	0/11787
2	D	0.26	0/991	0.55	0/1350
2	H	0.27	0/991	0.55	0/1350
2	J	0.26	0/991	0.55	0/1350
3	E	0.28	0/849	0.61	1/1153 (0.1%)
3	K	0.27	0/849	0.58	1/1153 (0.1%)
3	L	0.27	0/849	0.60	1/1153 (0.1%)
All	All	0.30	0/31494	0.53	3/42870 (0.0%)

There are no bond length outliers.

All (3) bond angle outliers are listed below:

Mol	Chain	Res	Type	Atoms	Z	Observed($^{\circ}$)	Ideal($^{\circ}$)
3	K	94	LEU	CA-CB-CG	5.29	127.46	115.30
3	L	94	LEU	CA-CB-CG	5.22	127.31	115.30
3	E	94	LEU	CA-CB-CG	5.20	127.26	115.30

There are no chirality outliers.

There are no planarity outliers.

5.2 Too-close contacts

In the following table, the Non-H and H(model) columns list the number of non-hydrogen atoms and hydrogen atoms in the chain respectively. The H(added) column lists the number of hydrogen atoms added and optimized by MolProbity. The Clashes column lists the number of clashes within the asymmetric unit, whereas Symm-Clashes lists symmetry-related clashes.

Mol	Chain	Non-H	H(model)	H(added)	Clashes	Symm-Clashes
1	A	8464	0	8250	220	0
1	B	8464	0	8250	219	0
1	C	8464	0	8250	247	0
2	D	966	0	932	35	0
2	H	966	0	932	36	0
2	J	966	0	932	31	0
3	E	830	0	807	38	0
3	K	830	0	807	39	0
3	L	830	0	807	35	0
4	F	28	0	25	0	0
4	G	28	0	25	0	0
4	I	28	0	25	0	0
5	A	168	0	156	1	0
5	B	168	0	156	2	0
5	C	168	0	156	2	0
All	All	31368	0	30510	836	0

The all-atom clashscore is defined as the number of clashes found per 1000 atoms (including hydrogen atoms). The all-atom clashscore for this structure is 14.

The worst 5 of 836 close contacts within the same asymmetric unit are listed below, sorted by their clash magnitude.

Atom-1	Atom-2	Interatomic distance (Å)	Clash overlap (Å)
1:C:243:ALA:CB	1:C:246:ARG:HD2	1.69	1.22
1:C:243:ALA:HB1	1:C:246:ARG:CD	1.69	1.21
1:C:69:HIS:NE2	1:C:78:ARG:HG3	1.61	1.14
1:C:243:ALA:HB1	1:C:246:ARG:HD3	1.18	1.13
1:C:69:HIS:CD2	1:C:78:ARG:HG3	1.89	1.08

There are no symmetry-related clashes.

5.3 Torsion angles [i](#)

5.3.1 Protein backbone [i](#)

In the following table, the Percentiles column shows the percent Ramachandran outliers of the chain as a percentile score with respect to all PDB entries followed by that with respect to all EM entries.

The Analysed column shows the number of residues for which the backbone conformation was analysed, and the total number of residues.

Mol	Chain	Analysed	Favoured	Allowed	Outliers	Percentiles	
1	A	1070/1246 (86%)	968 (90%)	101 (9%)	1 (0%)	51	85
1	B	1070/1246 (86%)	967 (90%)	102 (10%)	1 (0%)	51	85
1	C	1070/1246 (86%)	966 (90%)	103 (10%)	1 (0%)	51	85
2	D	122/225 (54%)	121 (99%)	1 (1%)	0	100	100
2	H	122/225 (54%)	121 (99%)	1 (1%)	0	100	100
2	J	122/225 (54%)	121 (99%)	1 (1%)	0	100	100
3	E	105/212 (50%)	101 (96%)	4 (4%)	0	100	100
3	K	105/212 (50%)	100 (95%)	5 (5%)	0	100	100
3	L	105/212 (50%)	100 (95%)	5 (5%)	0	100	100
All	All	3891/5049 (77%)	3565 (92%)	323 (8%)	3 (0%)	54	85

All (3) Ramachandran outliers are listed below:

Mol	Chain	Res	Type
1	A	16	VAL
1	B	16	VAL
1	C	16	VAL

5.3.2 Protein sidechains [i](#)

In the following table, the Percentiles column shows the percent sidechain outliers of the chain as a percentile score with respect to all PDB entries followed by that with respect to all EM entries.

The Analysed column shows the number of residues for which the sidechain conformation was analysed, and the total number of residues.

Mol	Chain	Analysed	Rotameric	Outliers	Percentiles	
1	A	949/1087 (87%)	949 (100%)	0	100	100
1	B	949/1087 (87%)	948 (100%)	1 (0%)	93	97
1	C	949/1087 (87%)	948 (100%)	1 (0%)	93	97
2	D	107/194 (55%)	106 (99%)	1 (1%)	78	87
2	H	107/194 (55%)	106 (99%)	1 (1%)	78	87
2	J	107/194 (55%)	106 (99%)	1 (1%)	78	87
3	E	93/187 (50%)	93 (100%)	0	100	100
3	K	93/187 (50%)	93 (100%)	0	100	100
3	L	93/187 (50%)	93 (100%)	0	100	100

Continued on next page...

Continued from previous page...

Mol	Chain	Analysed	Rotameric	Outliers	Percentiles
All	All	3447/4404 (78%)	3442 (100%)	5 (0%)	93 97

All (5) residues with a non-rotameric sidechain are listed below:

Mol	Chain	Res	Type
2	H	81	ARG
1	B	71	SER
2	D	81	ARG
1	C	70	VAL
2	J	81	ARG

Sometimes sidechains can be flipped to improve hydrogen bonding and reduce clashes. 5 of 9 such sidechains are listed below:

Mol	Chain	Res	Type
1	C	542	ASN
3	K	89	GLN
1	B	564	GLN
1	B	895	GLN
1	C	370	ASN

5.3.3 RNA [i](#)

There are no RNA molecules in this entry.

5.4 Non-standard residues in protein, DNA, RNA chains [i](#)

There are no non-standard protein/DNA/RNA residues in this entry.

5.5 Carbohydrates [i](#)

6 monosaccharides are modelled in this entry.

In the following table, the Counts columns list the number of bonds (or angles) for which Mogul statistics could be retrieved, the number of bonds (or angles) that are observed in the model and the number of bonds (or angles) that are defined in the Chemical Component Dictionary. The Link column lists molecule types, if any, to which the group is linked. The Z score for a bond length (or angle) is the number of standard deviations the observed value is removed from the expected value. A bond length (or angle) with $|Z| > 2$ is considered an outlier worth inspection. RMSZ is the root-mean-square of all Z scores of the bond lengths (or angles).

Mol	Type	Chain	Res	Link	Bond lengths			Bond angles		
					Counts	RMSZ	# Z > 2	Counts	RMSZ	# Z > 2
4	NAG	F	1	1,4	14,14,15	0.44	0	17,19,21	0.43	0
4	NAG	F	2	4	14,14,15	0.21	0	17,19,21	0.54	0
4	NAG	G	1	1,4	14,14,15	0.46	0	17,19,21	0.43	0
4	NAG	G	2	4	14,14,15	0.19	0	17,19,21	0.54	0
4	NAG	I	1	1,4	14,14,15	0.48	0	17,19,21	0.44	0
4	NAG	I	2	4	14,14,15	0.20	0	17,19,21	0.54	0

In the following table, the Chirals column lists the number of chiral outliers, the number of chiral centers analysed, the number of these observed in the model and the number defined in the Chemical Component Dictionary. Similar counts are reported in the Torsion and Rings columns. '2' means no outliers of that kind were identified.

Mol	Type	Chain	Res	Link	Chirals	Torsions	Rings
4	NAG	F	1	1,4	-	0/6/23/26	0/1/1/1
4	NAG	F	2	4	-	3/6/23/26	0/1/1/1
4	NAG	G	1	1,4	-	0/6/23/26	0/1/1/1
4	NAG	G	2	4	-	3/6/23/26	0/1/1/1
4	NAG	I	1	1,4	-	0/6/23/26	0/1/1/1
4	NAG	I	2	4	-	3/6/23/26	0/1/1/1

There are no bond length outliers.

There are no bond angle outliers.

There are no chirality outliers.

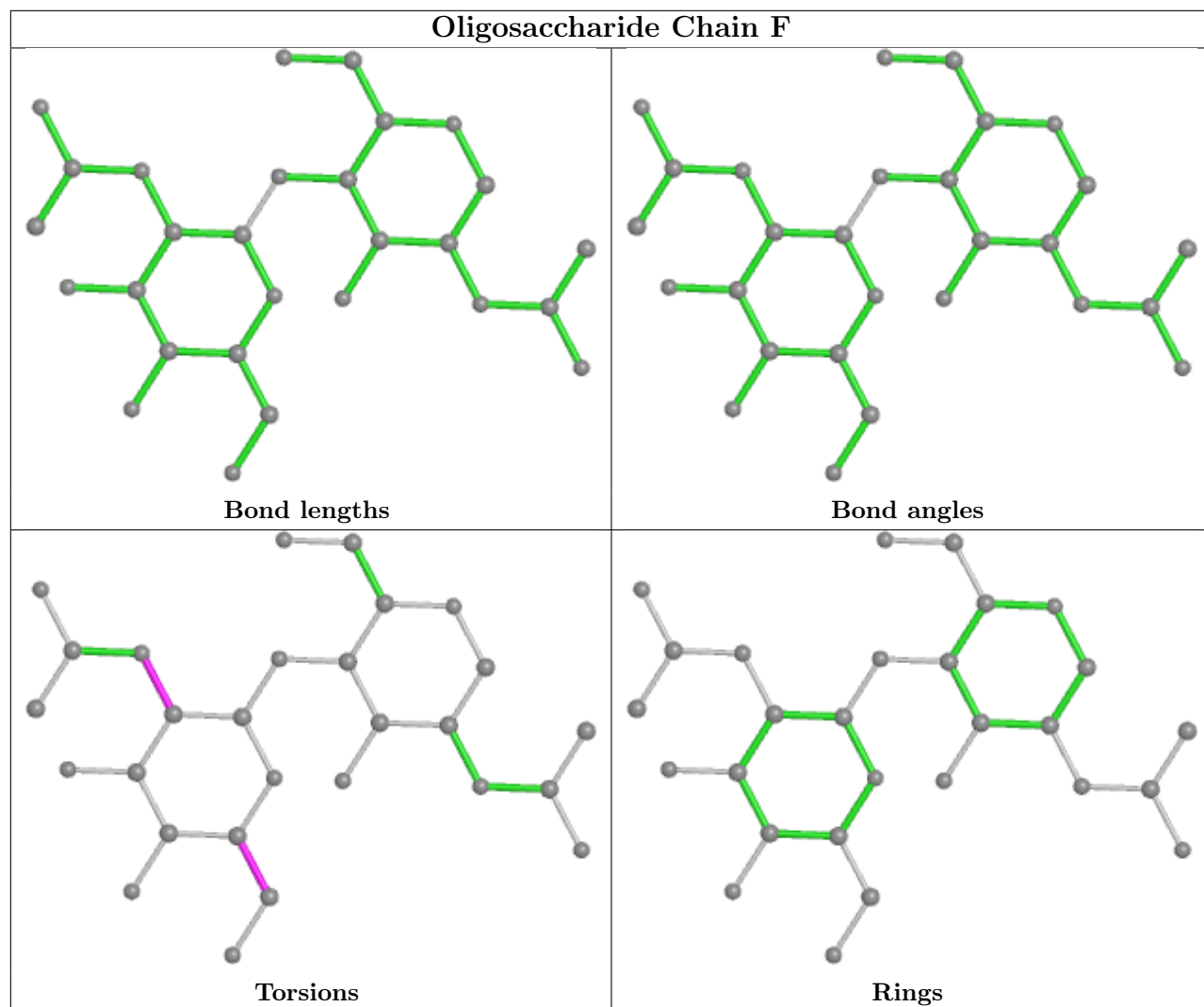
5 of 9 torsion outliers are listed below:

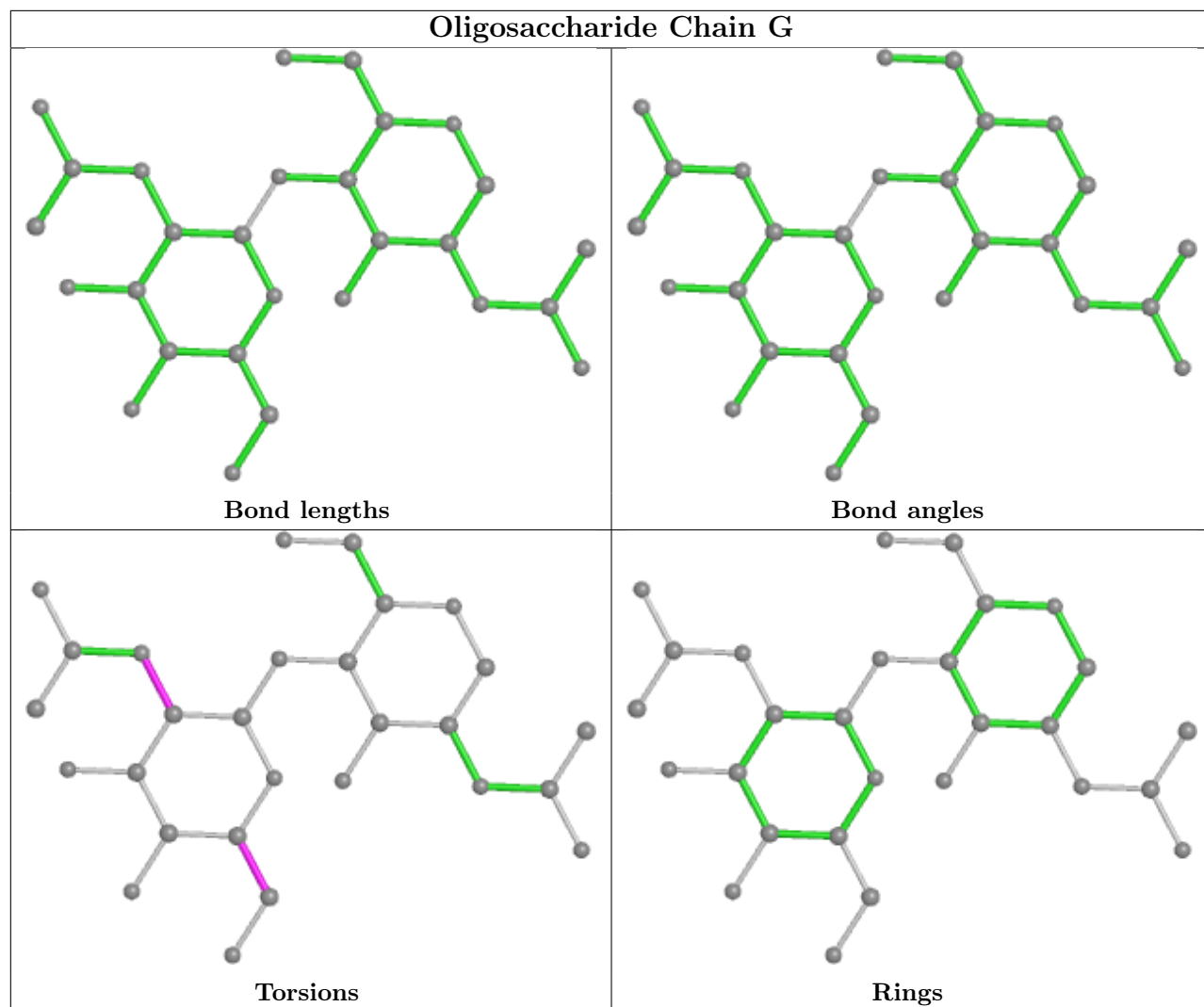
Mol	Chain	Res	Type	Atoms
4	G	2	NAG	O5-C5-C6-O6
4	F	2	NAG	O5-C5-C6-O6
4	I	2	NAG	O5-C5-C6-O6
4	F	2	NAG	C4-C5-C6-O6
4	G	2	NAG	C4-C5-C6-O6

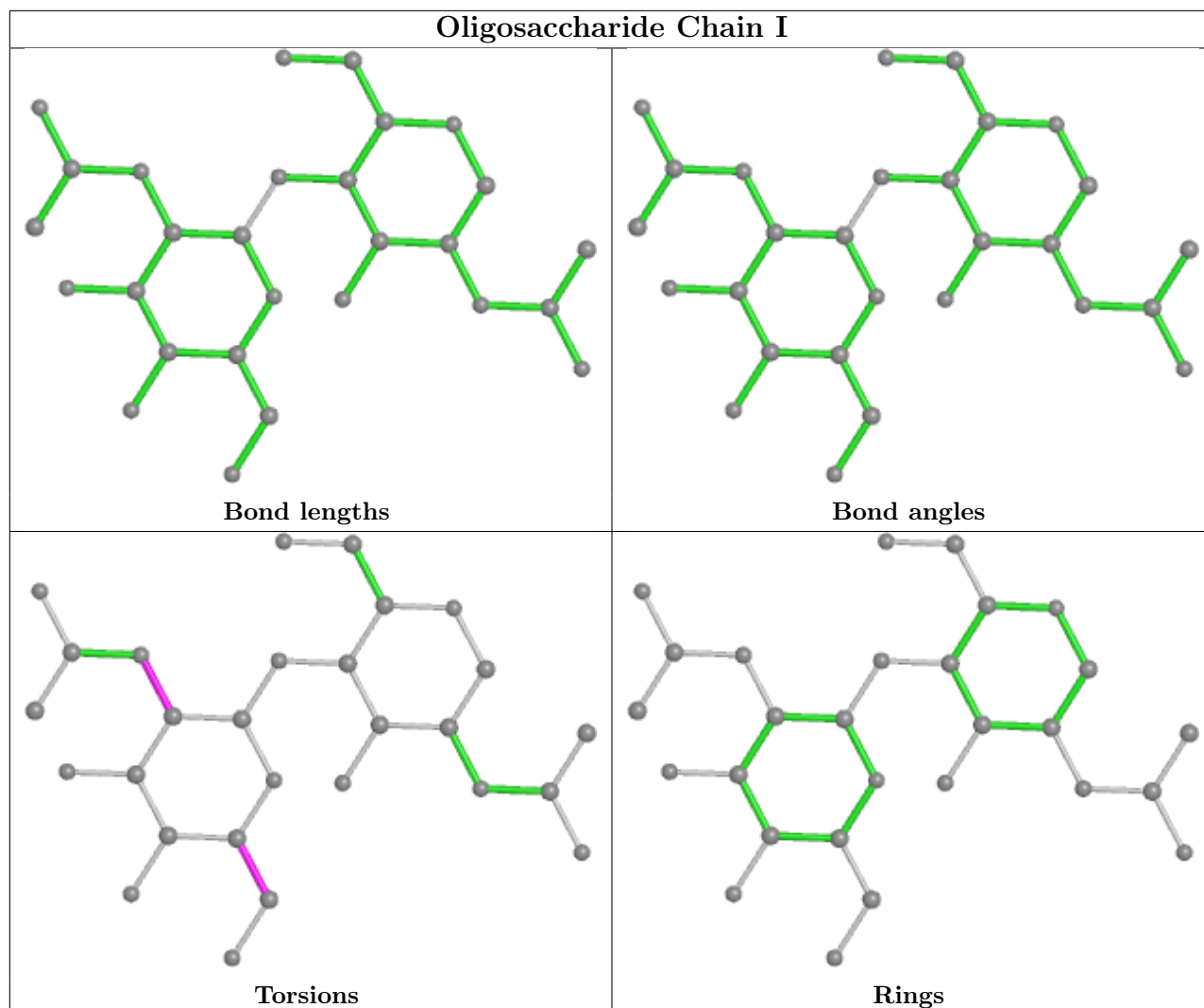
There are no ring outliers.

No monomer is involved in short contacts.

The following is a two-dimensional graphical depiction of Mogul quality analysis of bond lengths, bond angles, torsion angles, and ring geometry for oligosaccharide.







5.6 Ligand geometry [i](#)

36 ligands are modelled in this entry.

In the following table, the Counts columns list the number of bonds (or angles) for which Mogul statistics could be retrieved, the number of bonds (or angles) that are observed in the model and the number of bonds (or angles) that are defined in the Chemical Component Dictionary. The Link column lists molecule types, if any, to which the group is linked. The Z score for a bond length (or angle) is the number of standard deviations the observed value is removed from the expected value. A bond length (or angle) with $|Z| > 2$ is considered an outlier worth inspection. RMSZ is the root-mean-square of all Z scores of the bond lengths (or angles).

Mol	Type	Chain	Res	Link	Bond lengths			Bond angles		
					Counts	RMSZ	$\# Z > 2$	Counts	RMSZ	$\# Z > 2$
5	NAG	C	2011	1	14,14,15	0.22	0	17,19,21	0.49	0
5	NAG	B	2008	1	14,14,15	0.26	0	17,19,21	0.44	0
5	NAG	C	2007	1	14,14,15	0.19	0	17,19,21	0.45	0
5	NAG	B	2006	1	14,14,15	0.26	0	17,19,21	0.39	0

Mol	Type	Chain	Res	Link	Bond lengths			Bond angles		
					Counts	RMSZ	# Z > 2	Counts	RMSZ	# Z > 2
5	NAG	A	2012	1	14,14,15	0.21	0	17,19,21	0.34	0
5	NAG	A	2007	1	14,14,15	0.20	0	17,19,21	0.44	0
5	NAG	B	2004	1	14,14,15	0.18	0	17,19,21	0.41	0
5	NAG	A	2003	1	14,14,15	0.18	0	17,19,21	0.38	0
5	NAG	B	2005	1	14,14,15	0.19	0	17,19,21	0.46	0
5	NAG	C	2006	1	14,14,15	0.26	0	17,19,21	0.38	0
5	NAG	A	2011	1	14,14,15	0.23	0	17,19,21	0.49	0
5	NAG	A	2001	1	14,14,15	0.29	0	17,19,21	0.52	0
5	NAG	C	2002	1	14,14,15	0.32	0	17,19,21	0.49	0
5	NAG	C	2010	1	14,14,15	0.32	0	17,19,21	0.39	0
5	NAG	A	2009	1	14,14,15	0.16	0	17,19,21	0.52	0
5	NAG	B	2001	1	14,14,15	0.27	0	17,19,21	0.48	0
5	NAG	C	2009	1	14,14,15	0.16	0	17,19,21	0.53	0
5	NAG	A	2002	1	14,14,15	0.32	0	17,19,21	0.45	0
5	NAG	B	2007	1	14,14,15	0.21	0	17,19,21	0.45	0
5	NAG	C	2003	1	14,14,15	0.19	0	17,19,21	0.39	0
5	NAG	A	2010	1	14,14,15	0.31	0	17,19,21	0.40	0
5	NAG	B	2003	1	14,14,15	0.17	0	17,19,21	0.38	0
5	NAG	C	2005	1	14,14,15	0.21	0	17,19,21	0.43	0
5	NAG	B	2002	1	14,14,15	0.31	0	17,19,21	0.49	0
5	NAG	C	2008	1	14,14,15	0.27	0	17,19,21	0.43	0
5	NAG	A	2006	1	14,14,15	0.27	0	17,19,21	0.39	0
5	NAG	B	2009	1	14,14,15	0.17	0	17,19,21	0.52	0
5	NAG	B	2010	1	14,14,15	0.31	0	17,19,21	0.40	0
5	NAG	C	2004	1	14,14,15	0.18	0	17,19,21	0.42	0
5	NAG	A	2008	1	14,14,15	0.26	0	17,19,21	0.43	0
5	NAG	A	2004	1	14,14,15	0.16	0	17,19,21	0.41	0
5	NAG	C	2012	1	14,14,15	0.21	0	17,19,21	0.33	0
5	NAG	A	2005	1	14,14,15	0.20	0	17,19,21	0.43	0
5	NAG	B	2011	1	14,14,15	0.23	0	17,19,21	0.48	0
5	NAG	C	2001	1	14,14,15	0.28	0	17,19,21	0.51	0
5	NAG	B	2012	1	14,14,15	0.21	0	17,19,21	0.34	0

In the following table, the Chirals column lists the number of chiral outliers, the number of chiral centers analysed, the number of these observed in the model and the number defined in the Chemical Component Dictionary. Similar counts are reported in the Torsion and Rings columns. '-' means no outliers of that kind were identified.

Mol	Type	Chain	Res	Link	Chirals	Torsions	Rings
5	NAG	C	2011	1	-	2/6/23/26	0/1/1/1
5	NAG	B	2008	1	-	4/6/23/26	0/1/1/1
5	NAG	C	2007	1	-	4/6/23/26	0/1/1/1

Continued on next page...

Continued from previous page...

Mol	Type	Chain	Res	Link	Chirals	Torsions	Rings
5	NAG	B	2006	1	-	4/6/23/26	0/1/1/1
5	NAG	A	2012	1	-	3/6/23/26	0/1/1/1
5	NAG	A	2007	1	-	4/6/23/26	0/1/1/1
5	NAG	B	2004	1	-	3/6/23/26	0/1/1/1
5	NAG	A	2003	1	-	3/6/23/26	0/1/1/1
5	NAG	B	2005	1	-	3/6/23/26	0/1/1/1
5	NAG	C	2006	1	-	4/6/23/26	0/1/1/1
5	NAG	A	2011	1	-	2/6/23/26	0/1/1/1
5	NAG	A	2001	1	-	4/6/23/26	0/1/1/1
5	NAG	C	2002	1	-	4/6/23/26	0/1/1/1
5	NAG	C	2010	1	-	4/6/23/26	0/1/1/1
5	NAG	A	2009	1	-	4/6/23/26	0/1/1/1
5	NAG	B	2001	1	-	4/6/23/26	0/1/1/1
5	NAG	C	2009	1	-	4/6/23/26	0/1/1/1
5	NAG	A	2002	1	-	4/6/23/26	0/1/1/1
5	NAG	B	2007	1	-	4/6/23/26	0/1/1/1
5	NAG	C	2003	1	-	3/6/23/26	0/1/1/1
5	NAG	A	2010	1	-	4/6/23/26	0/1/1/1
5	NAG	B	2003	1	-	3/6/23/26	0/1/1/1
5	NAG	C	2005	1	-	3/6/23/26	0/1/1/1
5	NAG	B	2002	1	-	4/6/23/26	0/1/1/1
5	NAG	C	2008	1	-	4/6/23/26	0/1/1/1
5	NAG	A	2006	1	-	4/6/23/26	0/1/1/1
5	NAG	B	2009	1	-	4/6/23/26	0/1/1/1
5	NAG	B	2010	1	-	4/6/23/26	0/1/1/1
5	NAG	C	2004	1	-	3/6/23/26	0/1/1/1
5	NAG	A	2008	1	-	4/6/23/26	0/1/1/1
5	NAG	A	2004	1	-	3/6/23/26	0/1/1/1
5	NAG	C	2012	1	-	4/6/23/26	0/1/1/1
5	NAG	A	2005	1	-	4/6/23/26	0/1/1/1
5	NAG	B	2011	1	-	2/6/23/26	0/1/1/1
5	NAG	C	2001	1	-	4/6/23/26	0/1/1/1
5	NAG	B	2012	1	-	4/6/23/26	0/1/1/1

There are no bond length outliers.

There are no bond angle outliers.

There are no chirality outliers.

5 of 129 torsion outliers are listed below:

Mol	Chain	Res	Type	Atoms
5	A	2007	NAG	C4-C5-C6-O6
5	B	2007	NAG	C4-C5-C6-O6
5	C	2007	NAG	C4-C5-C6-O6
5	C	2009	NAG	C4-C5-C6-O6
5	B	2009	NAG	C4-C5-C6-O6

There are no ring outliers.

5 monomers are involved in 5 short contacts:

Mol	Chain	Res	Type	Clashes	Symm-Clashes
5	A	2012	NAG	1	0
5	B	2004	NAG	1	0
5	C	2004	NAG	1	0
5	C	2012	NAG	1	0
5	B	2012	NAG	1	0

5.7 Other polymers [i](#)

There are no such residues in this entry.

5.8 Polymer linkage issues [i](#)

There are no chain breaks in this entry.

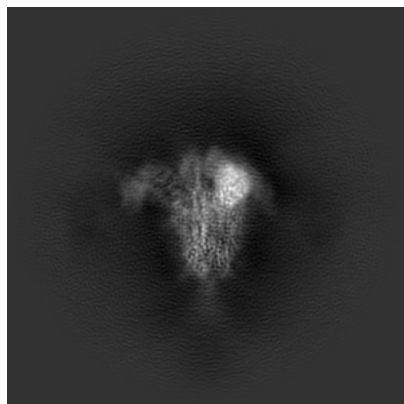
6 Map visualisation [i](#)

This section contains visualisations of the EMDB entry EMD-24628. These allow visual inspection of the internal detail of the map and identification of artifacts.

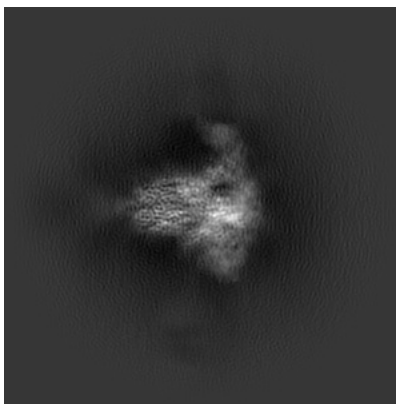
Images derived from a raw map, generated by summing the deposited half-maps, are presented below the corresponding image components of the primary map to allow further visual inspection and comparison with those of the primary map.

6.1 Orthogonal projections [i](#)

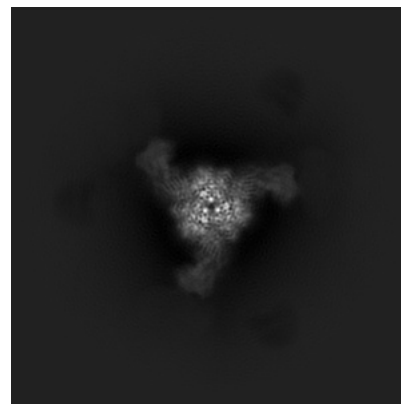
6.1.1 Primary map



X

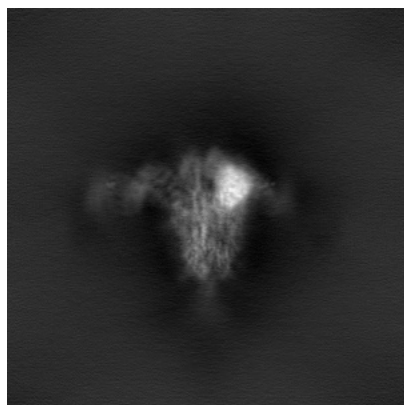


Y

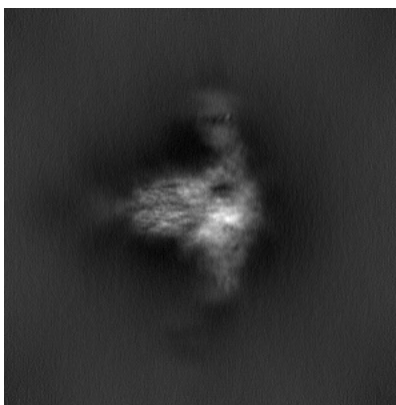


Z

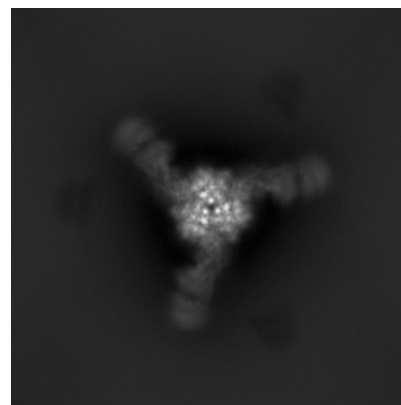
6.1.2 Raw map



X



Y

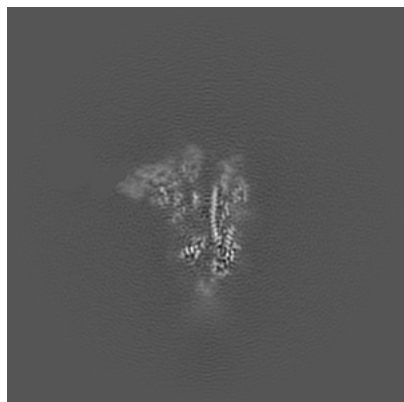


Z

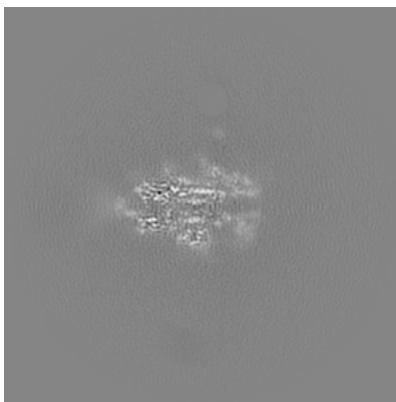
The images above show the map projected in three orthogonal directions.

6.2 Central slices [i](#)

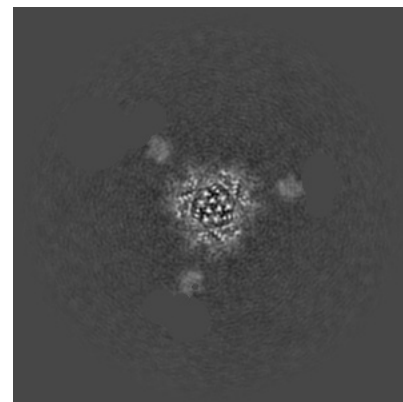
6.2.1 Primary map



X Index: 256

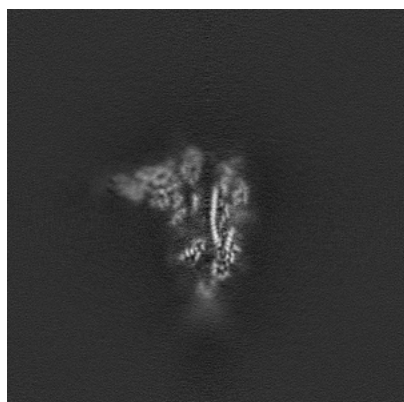


Y Index: 256

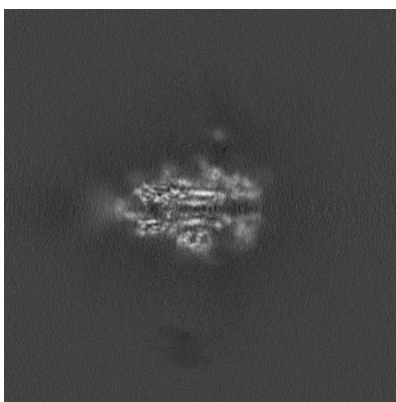


Z Index: 256

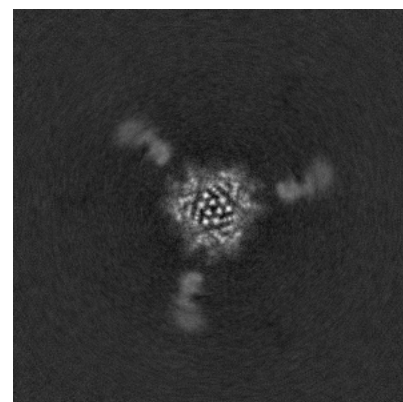
6.2.2 Raw map



X Index: 256



Y Index: 256

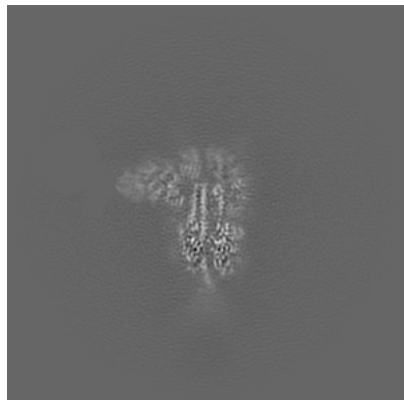


Z Index: 256

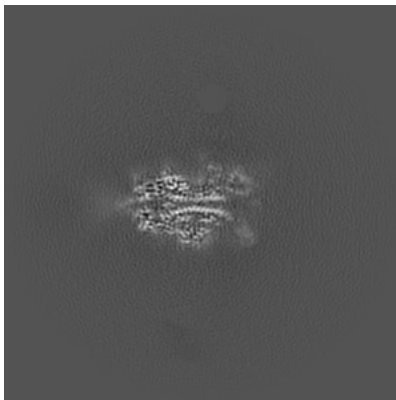
The images above show central slices of the map in three orthogonal directions.

6.3 Largest variance slices [i](#)

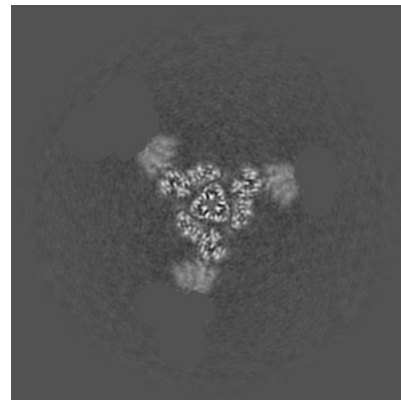
6.3.1 Primary map



X Index: 248



Y Index: 251

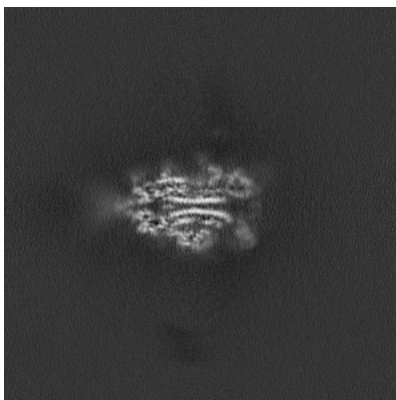


Z Index: 272

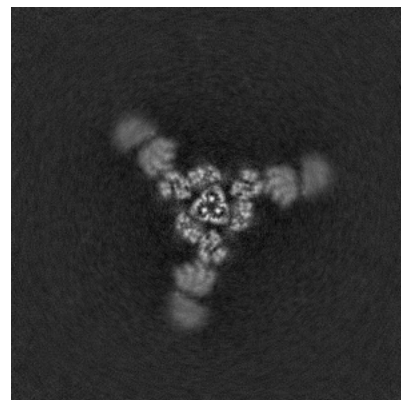
6.3.2 Raw map



X Index: 247



Y Index: 252

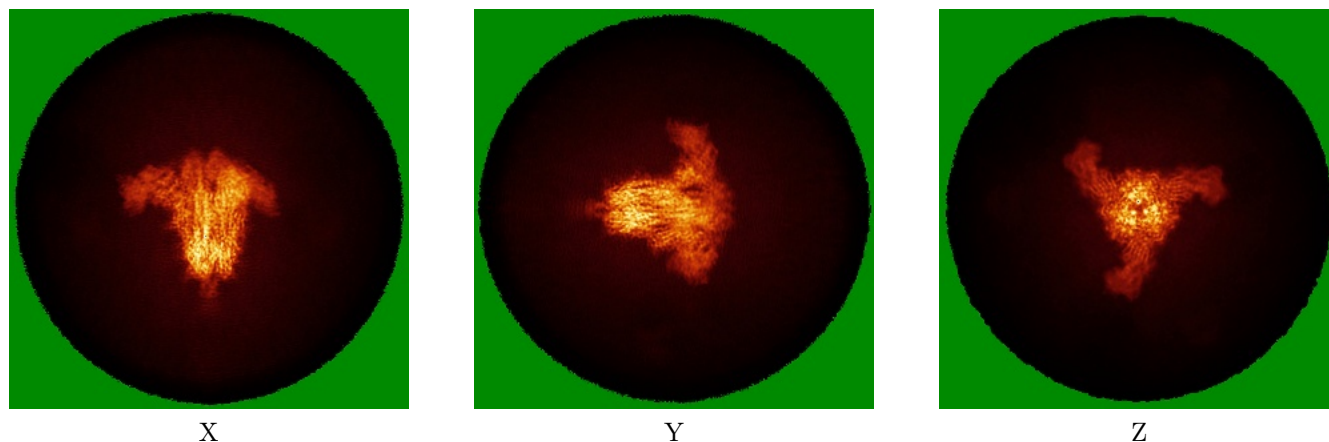


Z Index: 271

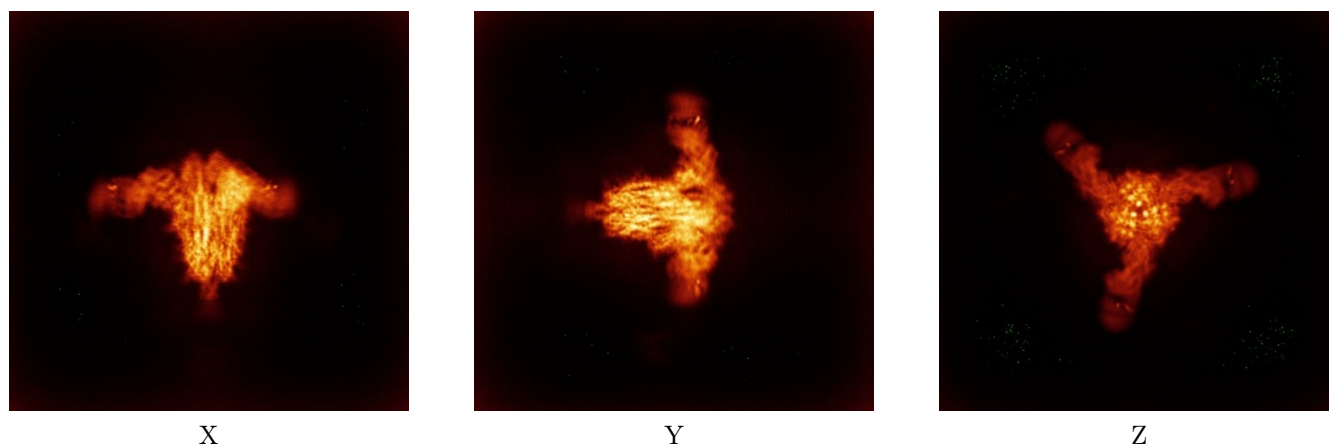
The images above show the largest variance slices of the map in three orthogonal directions.

6.4 Orthogonal standard-deviation projections (False-color) [i](#)

6.4.1 Primary map



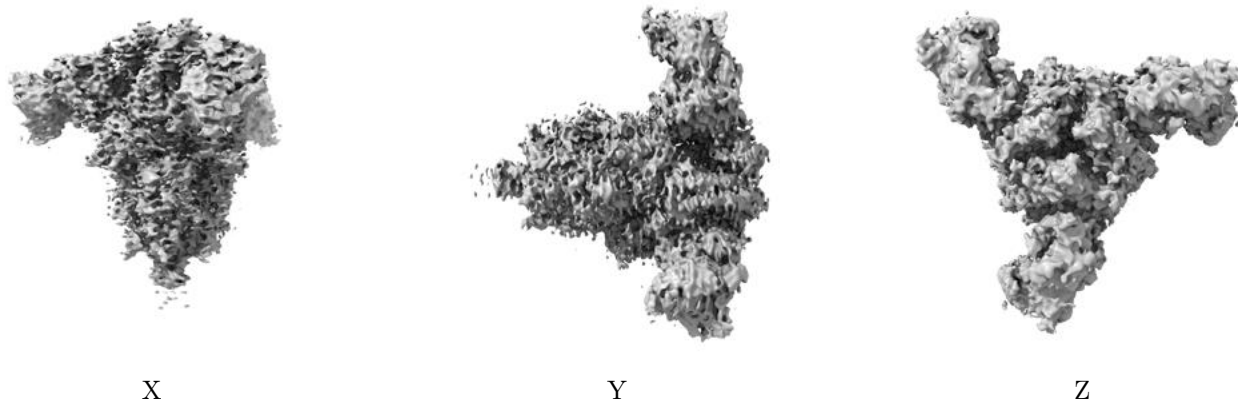
6.4.2 Raw map



The images above show the map standard deviation projections with false color in three orthogonal directions. Minimum values are shown in green, max in blue, and dark to light orange shades represent small to large values respectively.

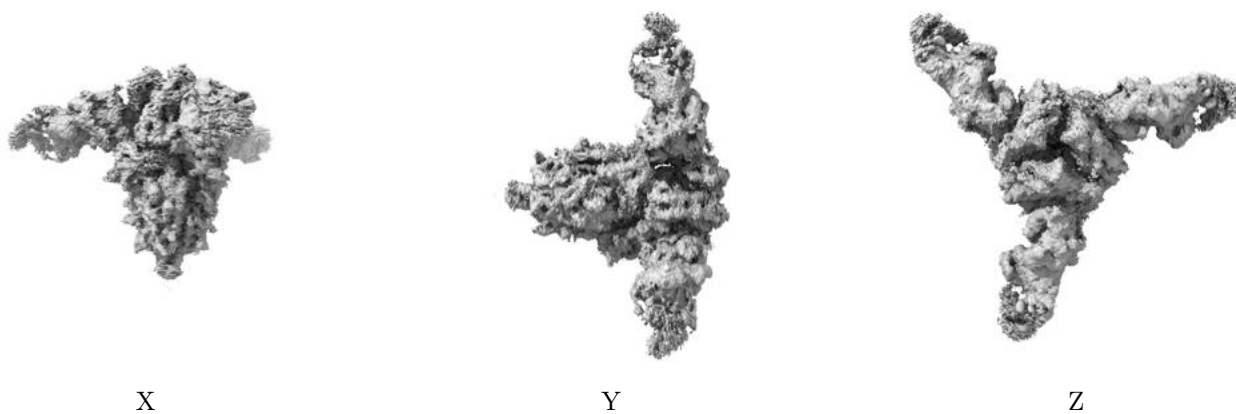
6.5 Orthogonal surface views [i](#)

6.5.1 Primary map



The images above show the 3D surface view of the map at the recommended contour level 0.15. These images, in conjunction with the slice images, may facilitate assessment of whether an appropriate contour level has been provided.

6.5.2 Raw map



These images show the 3D surface of the raw map. The raw map's contour level was selected so that its surface encloses the same volume as the primary map does at its recommended contour level.

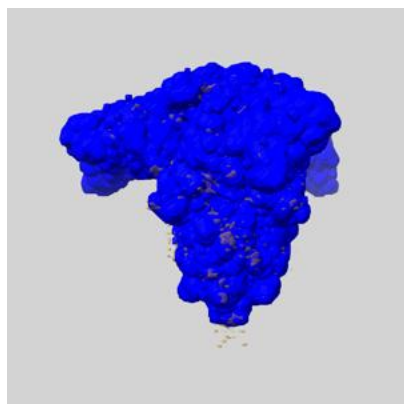
6.6 Mask visualisation [i](#)

This section shows the 3D surface view of the primary map at 50% transparency overlaid with the specified mask at 0% transparency

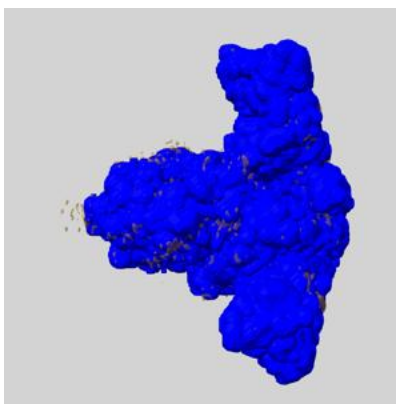
A mask typically either:

- Encompasses the whole structure
- Separates out a domain, a functional unit, a monomer or an area of interest from a larger structure

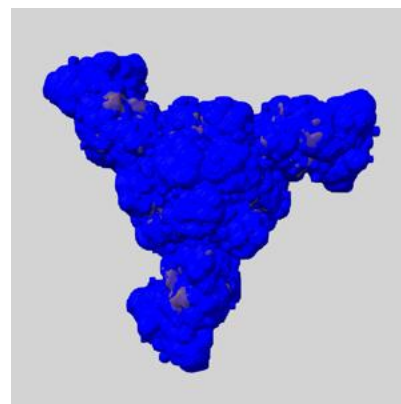
6.6.1 emd_24628_msk_1.map [i](#)



X



Y

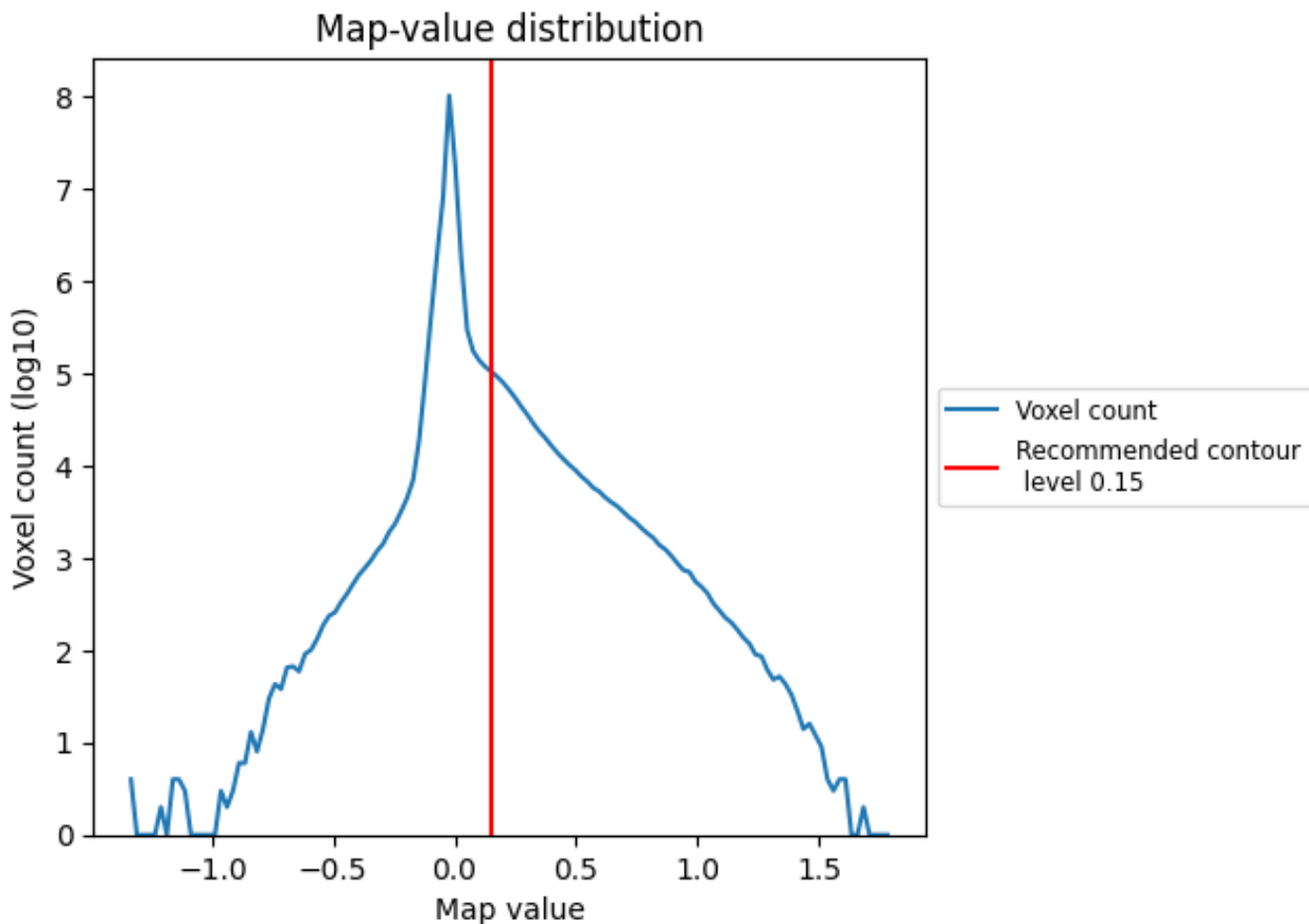


Z

7 Map analysis [i](#)

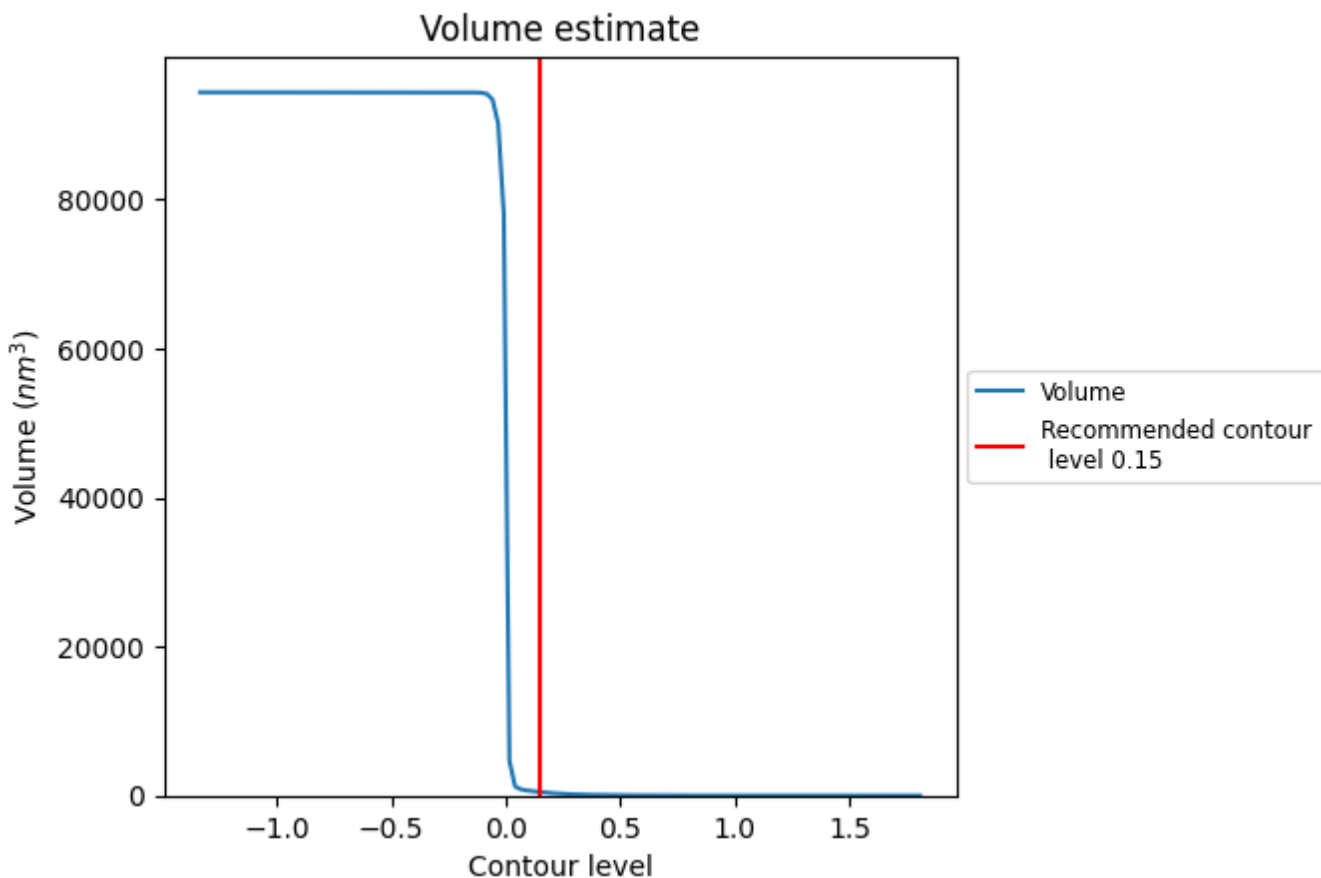
This section contains the results of statistical analysis of the map.

7.1 Map-value distribution [i](#)



The map-value distribution is plotted in 128 intervals along the x-axis. The y-axis is logarithmic. A spike in this graph at zero usually indicates that the volume has been masked.

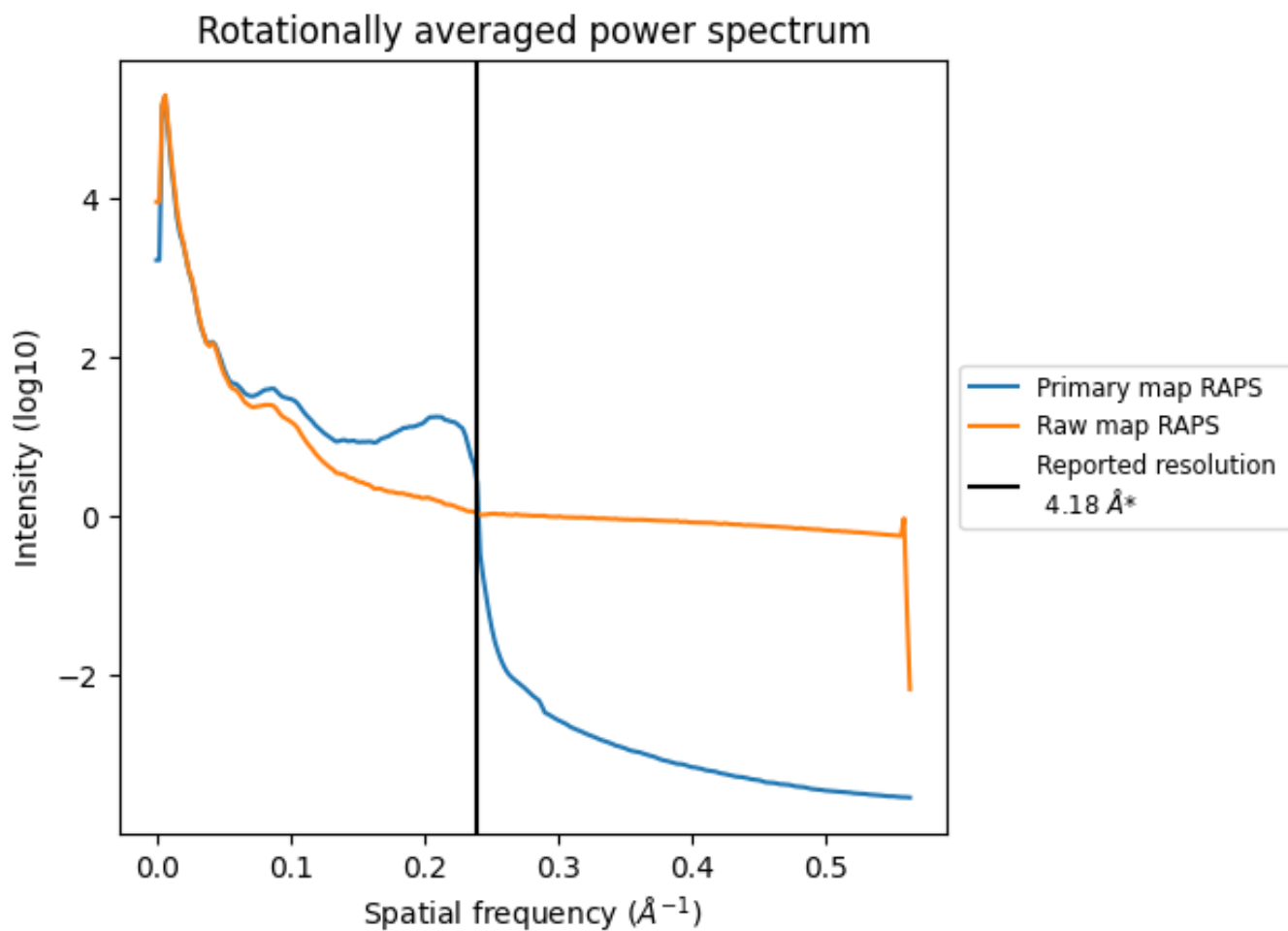
7.2 Volume estimate [i](#)



The volume at the recommended contour level is 474 nm^3 ; this corresponds to an approximate mass of 428 kDa.

The volume estimate graph shows how the enclosed volume varies with the contour level. The recommended contour level is shown as a vertical line and the intersection between the line and the curve gives the volume of the enclosed surface at the given level.

7.3 Rotationally averaged power spectrum i

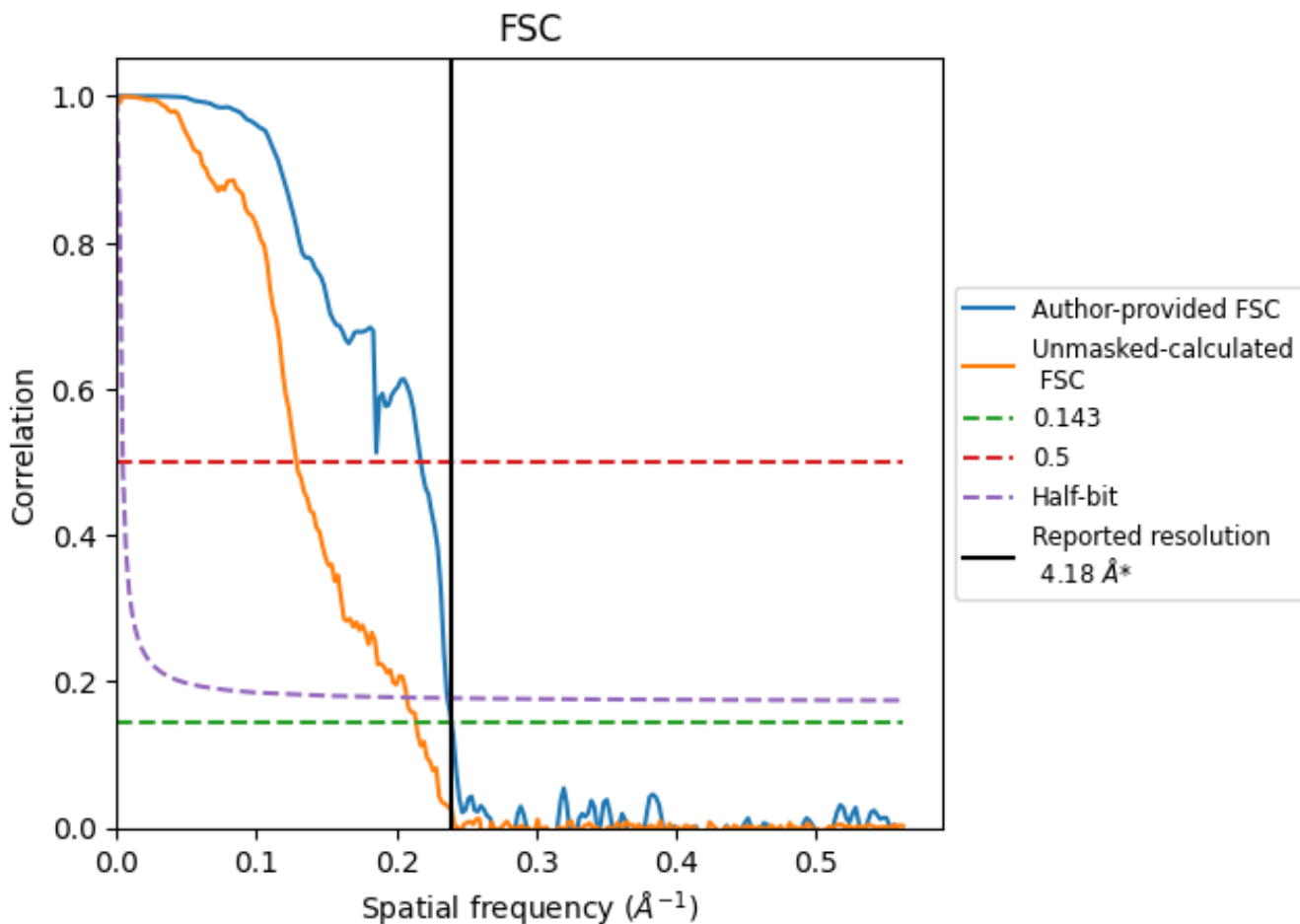


*Reported resolution corresponds to spatial frequency of 0.239 Å⁻¹

8 Fourier-Shell correlation [i](#)

Fourier-Shell Correlation (FSC) is the most commonly used method to estimate the resolution of single-particle and subtomogram-averaged maps. The shape of the curve depends on the imposed symmetry, mask and whether or not the two 3D reconstructions used were processed from a common reference. The reported resolution is shown as a black line. A curve is displayed for the half-bit criterion in addition to lines showing the 0.143 gold standard cut-off and 0.5 cut-off.

8.1 FSC [i](#)



*Reported resolution corresponds to spatial frequency of 0.239 Å⁻¹

8.2 Resolution estimates [i](#)

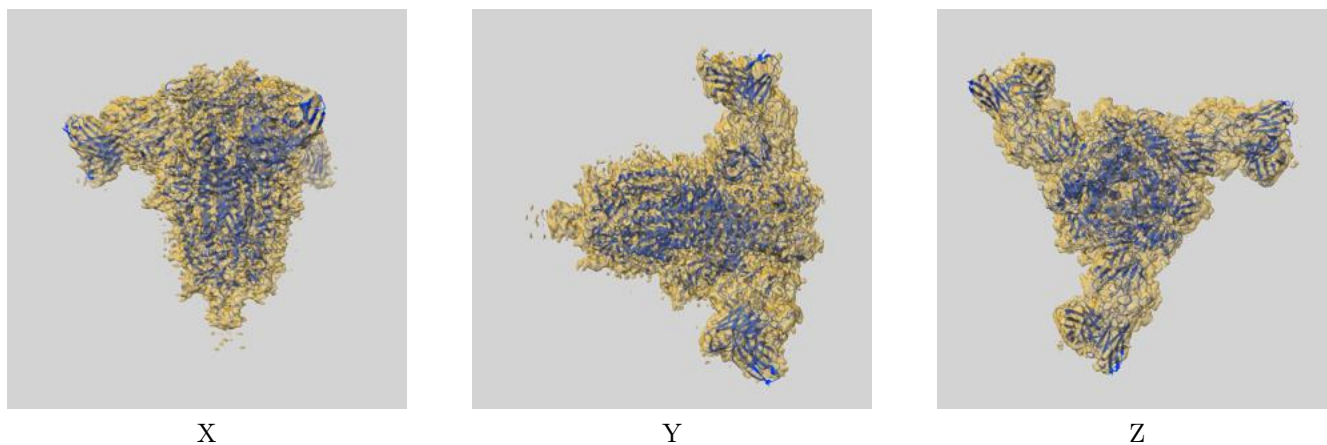
Resolution estimate (Å)	Estimation criterion (FSC cut-off)		
	0.143	0.5	Half-bit
Reported by author	4.18	-	-
Author-provided FSC curve	4.18	4.60	4.23
Unmasked-calculated*	4.67	7.78	4.82

*Resolution estimate based on FSC curve calculated by comparison of deposited half-maps. The value from deposited half-maps intersecting FSC 0.143 CUT-OFF 4.67 differs from the reported value 4.18 by more than 10 %

9 Map-model fit [i](#)

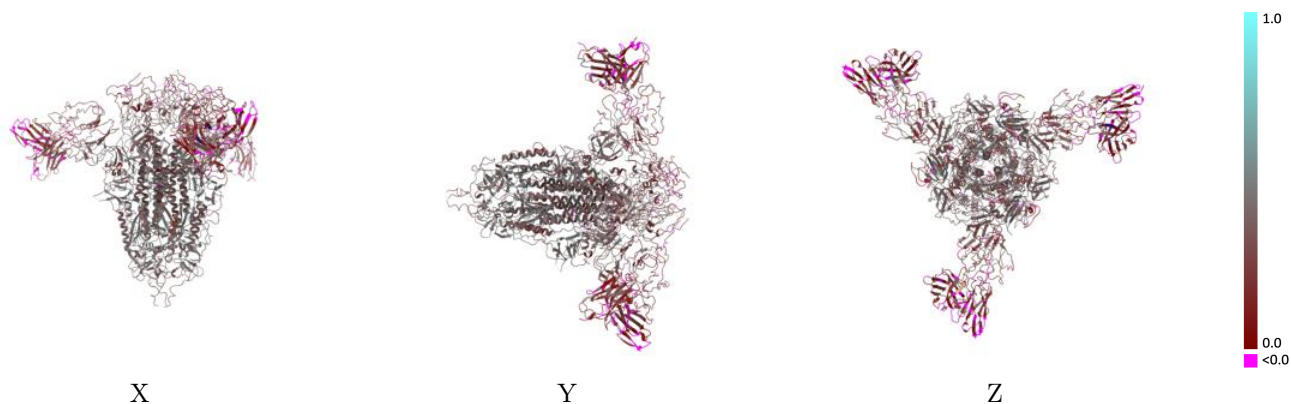
This section contains information regarding the fit between EMDB map EMD-24628 and PDB model 7RQ6. Per-residue inclusion information can be found in section 3 on page 11.

9.1 Map-model overlay [i](#)



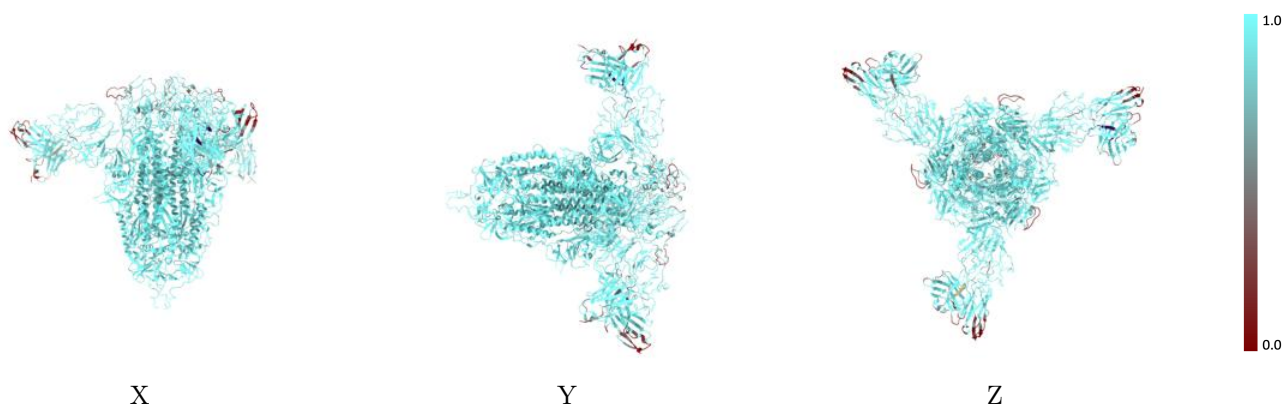
The images above show the 3D surface view of the map at the recommended contour level 0.15 at 50% transparency in yellow overlaid with a ribbon representation of the model coloured in blue. These images allow for the visual assessment of the quality of fit between the atomic model and the map.

9.2 Q-score mapped to coordinate model [i](#)



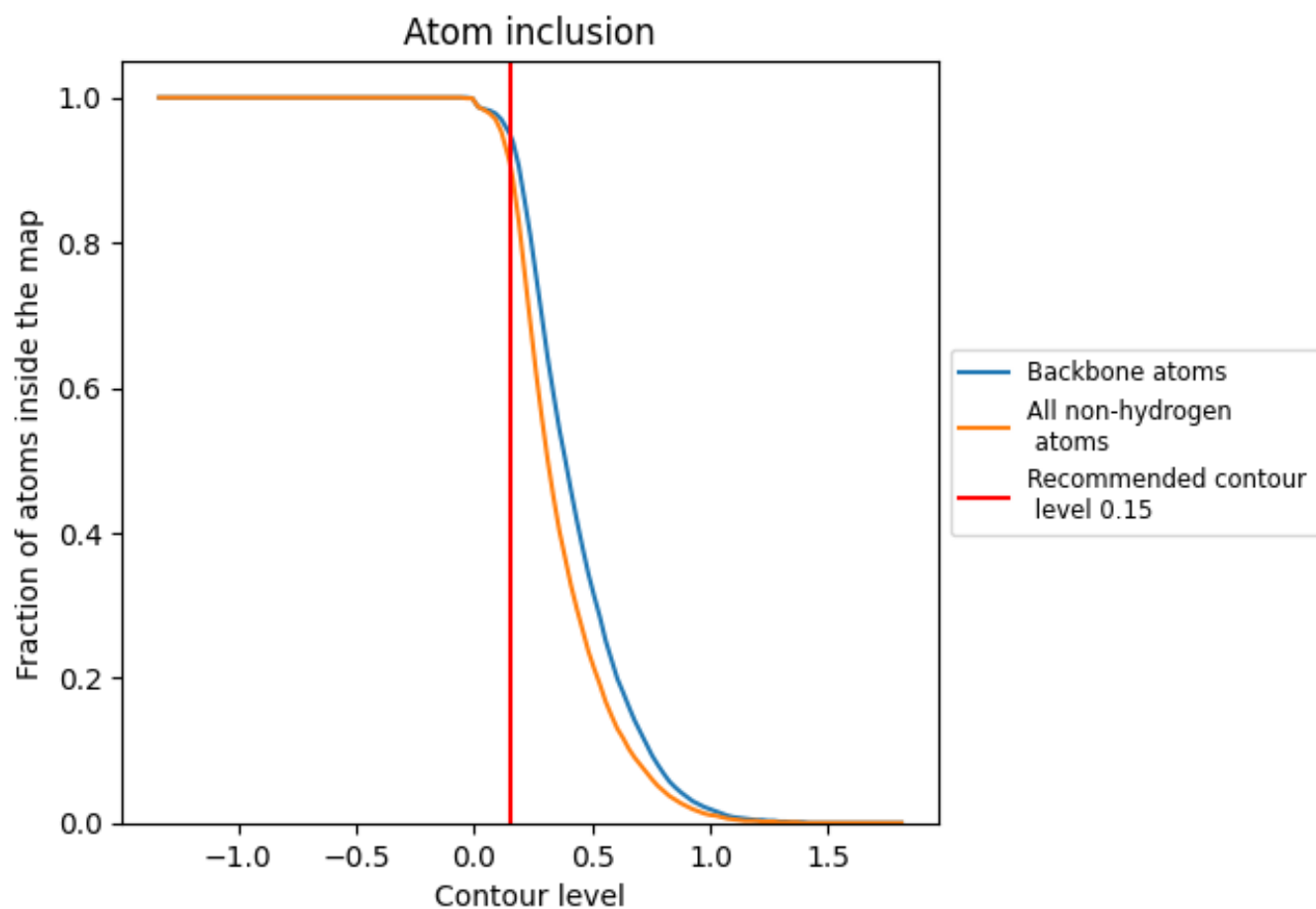
The images above show the model with each residue coloured according to its Q-score. This shows their resolvability in the map with higher Q-score values reflecting better resolvability. Please note: Q-score is calculating the resolvability of atoms, and thus high values are only expected at resolutions at which atoms can be resolved. Low Q-score values may therefore be expected for many entries.

9.3 Atom inclusion mapped to coordinate model [i](#)



The images above show the model with each residue coloured according to its atom inclusion. This shows to what extent they are inside the map at the recommended contour level (0.15).

























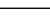
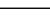
9.4 Atom inclusion [i](#)



At the recommended contour level, 95% of all backbone atoms, 91% of all non-hydrogen atoms, are inside the map.

9.5 Map-model fit summary

The table lists the average atom inclusion at the recommended contour level (0.15) and Q-score for the entire model and for each chain.

Chain	Atom inclusion	Q-score
All	 0.9110	 0.3300
A	 0.9310	 0.3650
B	 0.9280	 0.3650
C	 0.9290	 0.3630
D	 0.8440	 0.1630
E	 0.7540	 0.1400
F	 1.0000	 0.4210
G	 1.0000	 0.4270
H	 0.8790	 0.1860
I	 1.0000	 0.4320
J	 0.8750	 0.1810
K	 0.7800	 0.1540
L	 0.7800	 0.1550

