



Full wwPDB X-ray Structure Validation Report ⓘ

Aug 22, 2023 – 09:41 AM EDT

PDB ID : 2QR9
Title : Crystal Structure of the Estrogen Receptor Alpha Ligand Binding Domain
Complexed with an Oxabicyclic Derivative Compound
Authors : Nettles, K.W.; Bruning, J.B.
Deposited on : 2007-07-27
Resolution : 2.00 Å(reported)

This is a Full wwPDB X-ray Structure Validation Report for a publicly released PDB entry.

We welcome your comments at validation@mail.wwpdb.org

A user guide is available at

<https://www.wwpdb.org/validation/2017/XrayValidationReportHelp>

with specific help available everywhere you see the ⓘ symbol.

The types of validation reports are described at

<http://www.wwpdb.org/validation/2017/FAQs#types>.

The following versions of software and data (see [references ⓘ](#)) were used in the production of this report:

MolProbity : 4.02b-467
Mogul : 1.8.5 (274361), CSD as541be (2020)
Xtriage (Phenix) : 1.13
EDS : 2.35
buster-report : 1.1.7 (2018)
Percentile statistics : 20191225.v01 (using entries in the PDB archive December 25th 2019)
Refmac : 5.8.0158
CCP4 : 7.0.044 (Gargrove)
Ideal geometry (proteins) : Engh & Huber (2001)
Ideal geometry (DNA, RNA) : Parkinson et al. (1996)
Validation Pipeline (wwPDB-VP) : 2.35

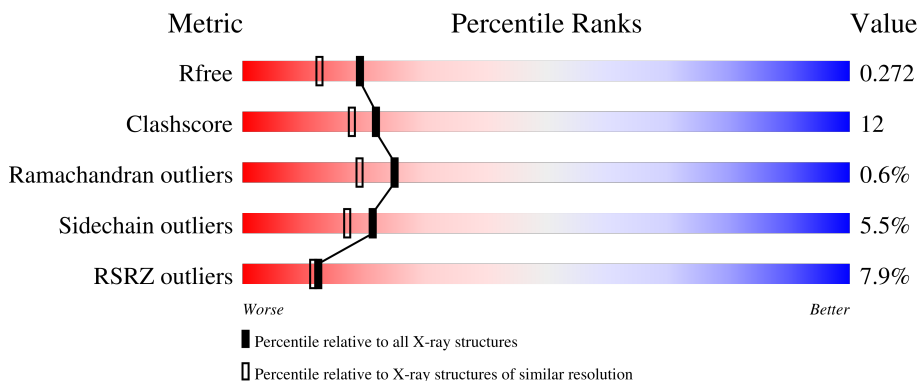
1 Overall quality at a glance

The following experimental techniques were used to determine the structure:

X-RAY DIFFRACTION

The reported resolution of this entry is 2.00 Å.

Percentile scores (ranging between 0-100) for global validation metrics of the entry are shown in the following graphic. The table shows the number of entries on which the scores are based.



Metric	Whole archive (#Entries)	Similar resolution (#Entries, resolution range(Å))
R_{free}	130704	8085 (2.00-2.00)
Clashscore	141614	9178 (2.00-2.00)
Ramachandran outliers	138981	9054 (2.00-2.00)
Sidechain outliers	138945	9053 (2.00-2.00)
RSRZ outliers	127900	7900 (2.00-2.00)

The table below summarises the geometric issues observed across the polymeric chains and their fit to the electron density. The red, orange, yellow and green segments of the lower bar indicate the fraction of residues that contain outliers for ≥ 3 , 2, 1 and 0 types of geometric quality criteria respectively. A grey segment represents the fraction of residues that are not modelled. The numeric value for each fraction is indicated below the corresponding segment, with a dot representing fractions $\leq 5\%$. The upper red bar (where present) indicates the fraction of residues that have poor fit to the electron density. The numeric value is given above the bar.

Mol	Chain	Length	Quality of chain
1	A	258	
1	B	258	
2	C	13	
2	D	13	

The following table lists non-polymeric compounds, carbohydrate monomers and non-standard

residues in protein, DNA, RNA chains that are outliers for geometric or electron-density-fit criteria:

Mol	Type	Chain	Res	Chirality	Geometry	Clashes	Electron density
3	HZ3	A	1	-	-	X	-
3	HZ3	B	1	-	-	X	-

2 Entry composition

There are 4 unique types of molecules in this entry. The entry contains 4238 atoms, of which 0 are hydrogens and 0 are deuteriums.

In the tables below, the ZeroOcc column contains the number of atoms modelled with zero occupancy, the AltConf column contains the number of residues with at least one atom in alternate conformation and the Trace column contains the number of residues modelled with at most 2 atoms.

- Molecule 1 is a protein called Estrogen receptor.

Mol	Chain	Residues	Atoms					ZeroOcc	AltConf	Trace
			Total	C	N	O	S			
1	A	242	1898	1218	327	334	19	0	3	0
1	B	242	1945	1250	328	346	21	0	6	0

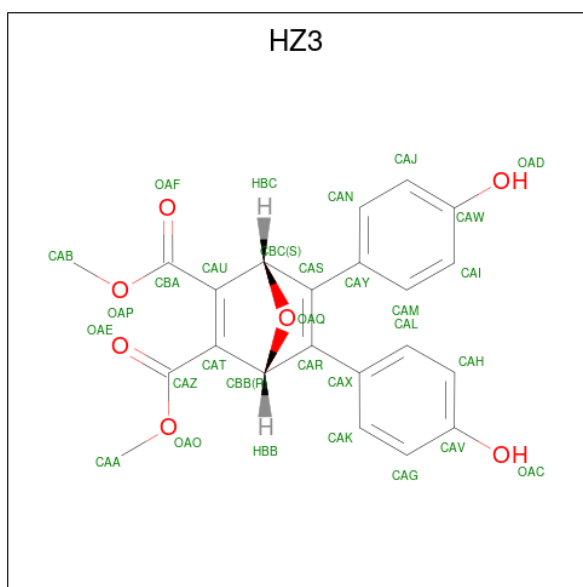
There are 4 discrepancies between the modelled and reference sequences:

Chain	Residue	Modelled	Actual	Comment	Reference
A	297	SER	-	expression tag	UNP P03372
A	537	SER	TYR	engineered mutation	UNP P03372
B	297	SER	-	expression tag	UNP P03372
B	537	SER	TYR	engineered mutation	UNP P03372

- Molecule 2 is a protein called Nuclear receptor coactivator 2.

Mol	Chain	Residues	Atoms				ZeroOcc	AltConf	Trace
			Total	C	N	O			
2	C	10	89	57	19	13	0	0	0
2	D	11	89	57	18	14	0	0	0

- Molecule 3 is dimethyl (1R,4S)-5,6-bis(4-hydroxyphenyl)-7-oxabicyclo[2.2.1]hepta-2,5-diene-2,3-dicarboxylate (three-letter code: HZ3) (formula: C₂₂H₁₈O₇).



Mol	Chain	Residues	Atoms		ZeroOcc	AltConf	
3	A	1	Total	C	O	0	0
			29	22	7		
3	B	1	Total	C	O	0	0
			29	22	7		

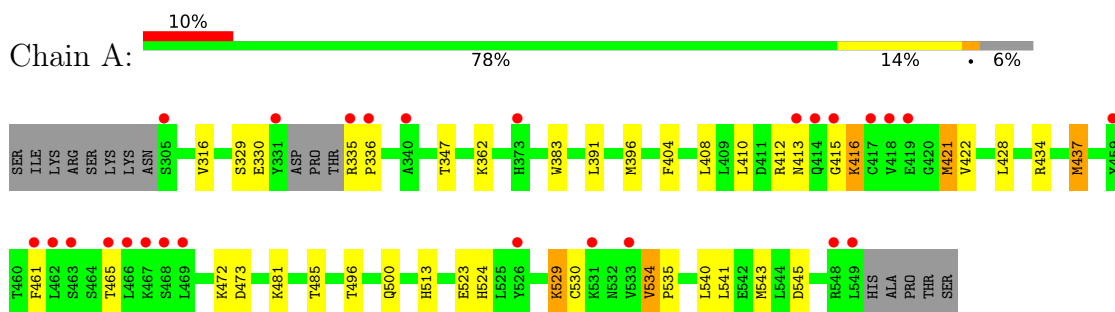
- Molecule 4 is water.

Mol	Chain	Residues	Atoms		ZeroOcc	AltConf
4	A	69	Total	O	0	0
			69	69		
4	B	89	Total	O	0	0
			89	89		
4	C	1	Total	O	0	0
			1	1		

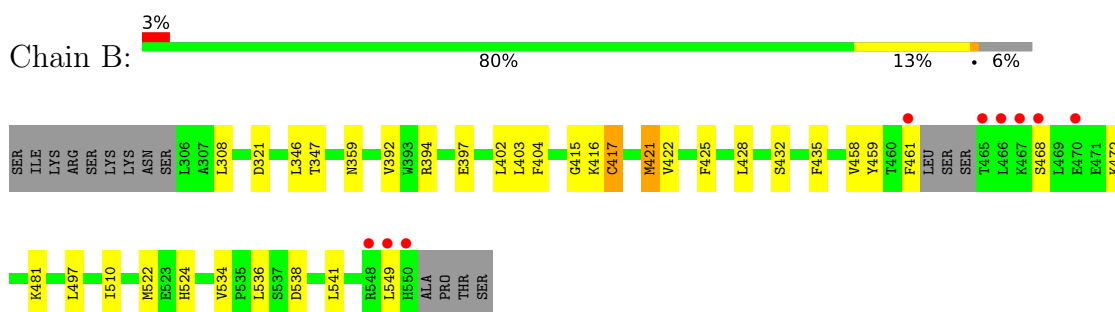
3 Residue-property plots [i](#)

These plots are drawn for all protein, RNA, DNA and oligosaccharide chains in the entry. The first graphic for a chain summarises the proportions of the various outlier classes displayed in the second graphic. The second graphic shows the sequence view annotated by issues in geometry and electron density. Residues are color-coded according to the number of geometric quality criteria for which they contain at least one outlier: green = 0, yellow = 1, orange = 2 and red = 3 or more. A red dot above a residue indicates a poor fit to the electron density ($RSRZ > 2$). Stretches of 2 or more consecutive residues without any outlier are shown as a green connector. Residues present in the sample, but not in the model, are shown in grey.

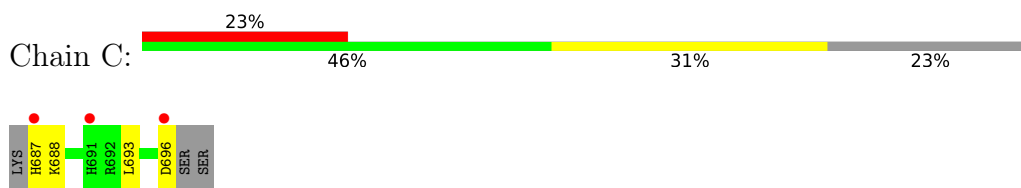
- Molecule 1: Estrogen receptor



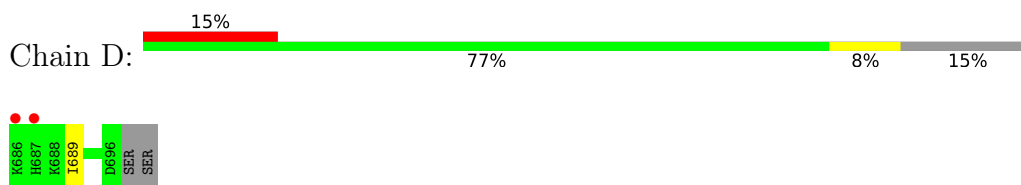
- Molecule 1: Estrogen receptor



- Molecule 2: Nuclear receptor coactivator 2



- Molecule 2: Nuclear receptor coactivator 2



4 Data and refinement statistics i

Property	Value	Source
Space group	P 1 21 1	Depositor
Cell constants a, b, c, α , β , γ	55.99Å 84.00Å 58.72Å 90.00° 108.85° 90.00°	Depositor
Resolution (Å)	10.00 – 2.00 9.84 – 2.00	Depositor EDS
% Data completeness (in resolution range)	89.1 (10.00-2.00) 89.1 (9.84-2.00)	Depositor EDS
R_{merge}	0.06	Depositor
R_{sym}	0.06	Depositor
$\langle I/\sigma(I) \rangle$ ¹	7.55 (at 1.99Å)	Xtrriage
Refinement program	REFMAC 5.2.0019	Depositor
R, R_{free}	0.214 , 0.262 0.221 , 0.272	Depositor DCC
R_{free} test set	1552 reflections (5.01%)	wwPDB-VP
Wilson B-factor (Å ²)	28.7	Xtrriage
Anisotropy	0.201	Xtrriage
Bulk solvent k_{sol} (e/Å ³), B_{sol} (Å ²)	0.40 , 61.7	EDS
L-test for twinning ²	$\langle L \rangle = 0.49$, $\langle L^2 \rangle = 0.33$	Xtrriage
Estimated twinning fraction	0.025 for l,-k,h	Xtrriage
F_o, F_c correlation	0.93	EDS
Total number of atoms	4238	wwPDB-VP
Average B, all atoms (Å ²)	22.0	wwPDB-VP

Xtrriage's analysis on translational NCS is as follows: *The largest off-origin peak in the Patterson function is 4.90% of the height of the origin peak. No significant pseudotranslation is detected.*

¹Intensities estimated from amplitudes.

²Theoretical values of $\langle |L| \rangle$, $\langle L^2 \rangle$ for acentric reflections are 0.5, 0.333 respectively for untwinned datasets, and 0.375, 0.2 for perfectly twinned datasets.

5 Model quality [i](#)

5.1 Standard geometry [i](#)

Bond lengths and bond angles in the following residue types are not validated in this section: HZ3

The Z score for a bond length (or angle) is the number of standard deviations the observed value is removed from the expected value. A bond length (or angle) with $|Z| > 5$ is considered an outlier worth inspection. RMSZ is the root-mean-square of all Z scores of the bond lengths (or angles).

Mol	Chain	Bond lengths		Bond angles	
		RMSZ	# Z >5	RMSZ	# Z >5
1	A	0.64	0/1942	0.68	0/2626
1	B	0.69	0/2000	0.71	0/2703
2	C	0.51	0/90	0.72	0/119
2	D	0.68	0/89	0.75	0/118
All	All	0.66	0/4121	0.70	0/5566

There are no bond length outliers.

There are no bond angle outliers.

There are no chirality outliers.

There are no planarity outliers.

5.2 Too-close contacts [i](#)

In the following table, the Non-H and H(model) columns list the number of non-hydrogen atoms and hydrogen atoms in the chain respectively. The H(added) column lists the number of hydrogen atoms added and optimized by MolProbity. The Clashes column lists the number of clashes within the asymmetric unit, whereas Symm-Clashes lists symmetry-related clashes.

Mol	Chain	Non-H	H(model)	H(added)	Clashes	Symm-Clashes
1	A	1898	0	1921	44	0
1	B	1945	0	1989	52	0
2	C	89	0	95	3	0
2	D	89	0	92	1	0
3	A	29	0	16	20	0
3	B	29	0	16	19	0
4	A	69	0	0	1	1
4	B	89	0	0	2	1
4	C	1	0	0	0	0
All	All	4238	0	4129	97	1

The all-atom clashscore is defined as the number of clashes found per 1000 atoms (including hydrogen atoms). The all-atom clashscore for this structure is 12.

All (97) close contacts within the same asymmetric unit are listed below, sorted by their clash magnitude.

Atom-1	Atom-2	Interatomic distance (Å)	Clash overlap (Å)
1:B:415:GLY:O	1:B:421:MET:HE2	1.37	1.21
3:A:1:HZ3:HBC	3:A:1:HZ3:CAB	1.76	1.15
1:A:421:MET:HB2	3:A:1:HZ3:HAA1	1.28	1.11
1:A:513[B]:HIS:CD2	1:B:459[B]:TYR:CE2	2.41	1.08
1:A:513[B]:HIS:CD2	1:B:459[B]:TYR:CD2	2.41	1.08
1:B:421:MET:HE3	1:B:422:VAL:N	1.75	1.02
1:B:421:MET:HG3	3:B:1:HZ3:HAA1	1.42	1.01
1:B:347:THR:HG22	3:B:1:HZ3:OAC	1.63	0.97
1:B:415:GLY:O	1:B:421:MET:CE	2.12	0.96
3:A:1:HZ3:HBC	3:A:1:HZ3:HAB2	1.47	0.96
3:A:1:HZ3:HBC	3:A:1:HZ3:HAB3	1.46	0.94
3:A:1:HZ3:HAB2	3:A:1:HZ3:CBC	1.97	0.93
3:A:1:HZ3:CAB	3:A:1:HZ3:CBC	2.47	0.90
1:A:421:MET:CB	3:A:1:HZ3:HAA1	2.03	0.88
1:B:421:MET:HE3	1:B:422:VAL:CA	2.05	0.87
1:A:524:HIS:CE1	3:A:1:HZ3:HAA3	2.15	0.82
1:B:421:MET:HG3	3:B:1:HZ3:CAA	2.11	0.80
1:A:421:MET:HB2	3:A:1:HZ3:CAA	2.14	0.74
1:B:415:GLY:C	1:B:421:MET:CE	2.57	0.73
1:A:513[B]:HIS:HD2	1:B:459[B]:TYR:CE2	2.06	0.71
1:A:513[B]:HIS:CD2	1:B:459[B]:TYR:HE2	2.09	0.71
1:B:347:THR:CG2	3:B:1:HZ3:HAH	2.20	0.70
1:A:391:LEU:CD2	3:A:1:HZ3:HAB1	2.22	0.70
1:A:513[B]:HIS:CD2	1:B:459[B]:TYR:HD2	2.08	0.70
1:B:428:LEU:HD12	3:B:1:HZ3:HAB2	1.74	0.69
1:B:347:THR:HG22	3:B:1:HZ3:CAV	2.24	0.68
1:A:416:LYS:CB	1:A:421:MET:SD	2.82	0.67
1:A:347:THR:CG2	3:A:1:HZ3:HAH	2.26	0.66
1:B:459[B]:TYR:OH	4:B:94:HOH:O	2.11	0.66
1:A:513[B]:HIS:HD2	1:B:459[B]:TYR:HE2	1.43	0.65
1:A:416:LYS:HA	1:A:421:MET:HE3	1.78	0.65
1:B:421:MET:HE3	1:B:422:VAL:HA	1.79	0.64
1:A:347:THR:HG22	3:A:1:HZ3:HAH	1.79	0.64
1:B:347:THR:HG22	3:B:1:HZ3:CAH	2.28	0.63
1:A:408:LEU:HD12	1:A:410:LEU:HD21	1.79	0.63
1:A:513[B]:HIS:NE2	1:B:459[B]:TYR:CD2	2.66	0.62
1:A:416:LYS:HA	1:A:421:MET:CE	2.30	0.62

Continued on next page...

Continued from previous page...

Atom-1	Atom-2	Interatomic distance (Å)	Clash overlap (Å)
1:A:408:LEU:CD1	1:A:410:LEU:HD21	2.30	0.61
1:B:404:PHE:HZ	3:B:1:HZ3:CAB	2.13	0.61
1:B:347:THR:HG22	3:B:1:HZ3:HAH	1.80	0.60
1:B:347:THR:HG23	3:B:1:HZ3:HAH	1.84	0.59
1:B:415:GLY:C	1:B:421:MET:HE1	2.23	0.59
1:B:402:LEU:HD13	3:B:1:HZ3:HAB1	1.85	0.58
1:A:524:HIS:CE1	3:A:1:HZ3:CAA	2.86	0.58
1:A:347:THR:HG22	3:A:1:HZ3:OAC	2.03	0.57
3:A:1:HZ3:HAB2	3:A:1:HZ3:CAS	2.33	0.57
1:A:513[B]:HIS:CG	1:B:459[B]:TYR:HD2	2.22	0.57
1:B:402:LEU:CD1	3:B:1:HZ3:HAB1	2.36	0.56
1:A:529:LYS:NZ	1:A:530:CYS:SG	2.80	0.55
1:B:421:MET:HE3	1:B:421:MET:C	2.28	0.54
1:B:404:PHE:HZ	3:B:1:HZ3:HAB1	1.72	0.54
3:B:1:HZ3:OAO	3:B:1:HZ3:OAF	2.27	0.53
1:A:416:LYS:CB	1:A:421:MET:CE	2.87	0.52
1:A:335:ARG:CB	1:A:336:PRO:HD3	2.40	0.52
1:B:421:MET:CG	3:B:1:HZ3:OAO	2.59	0.51
1:B:392:VAL:HG13	1:B:432:SER:CA	2.41	0.50
1:B:421:MET:SD	1:B:425:PHE:HD1	2.35	0.50
1:A:461:PHE:HB2	1:A:472:LYS:HE2	1.94	0.50
1:A:416:LYS:CB	1:A:421:MET:HE1	2.41	0.50
1:A:513[B]:HIS:NE2	1:B:459[B]:TYR:CE2	2.80	0.49
1:A:434:ARG:HH11	1:A:437:MET:HE3	1.77	0.49
1:A:347:THR:HG22	3:A:1:HZ3:CAH	2.42	0.48
1:B:392:VAL:HG13	1:B:432:SER:HA	1.95	0.48
1:B:404:PHE:CZ	3:B:1:HZ3:HAB1	2.50	0.47
1:A:347:THR:HG23	3:A:1:HZ3:HAH	1.97	0.47
1:B:524:HIS:ND1	3:B:1:HZ3:OAE	2.48	0.47
1:B:403:LEU:CD2	1:B:403:LEU:O	2.63	0.46
1:B:522:MET:HG3	1:B:549:LEU:HD21	1.97	0.46
1:B:308:LEU:HA	1:B:481:LYS:HD2	1.97	0.46
2:C:687:HIS:N	2:C:687:HIS:ND1	2.63	0.46
3:A:1:HZ3:HAB2	3:A:1:HZ3:CAY	2.46	0.46
2:C:687:HIS:N	2:C:687:HIS:HD1	2.13	0.46
1:A:383:TRP:NE1	1:A:543:MET:HB3	2.31	0.46
1:A:412:ARG:HA	4:A:113:HOH:O	2.15	0.45
1:A:416:LYS:CA	1:A:421:MET:CE	2.94	0.45
1:B:346:LEU:CD1	3:B:1:HZ3:HAA3	2.46	0.45
1:B:403:LEU:O	1:B:403:LEU:HD23	2.15	0.45
1:A:434:ARG:HH11	1:A:437:MET:CE	2.29	0.45

Continued on next page...

Continued from previous page...

Atom-1	Atom-2	Interatomic distance (Å)	Clash overlap (Å)
1:B:403:LEU:HD23	1:B:403:LEU:C	2.37	0.45
1:A:362:LYS:NZ	2:C:696:ASP:O	2.50	0.44
1:A:496:THR:O	1:A:500:GLN:HG3	2.17	0.44
1:B:421:MET:HG2	3:B:1:HZ3:OAO	2.17	0.44
1:A:534:VAL:HG12	1:A:535:PRO:HD2	1.98	0.44
1:B:359:ASN:CB	4:B:161:HOH:O	2.66	0.44
3:A:1:HZ3:HAB2	3:A:1:HZ3:CAN	2.48	0.44
1:A:428:LEU:HD11	3:A:1:HZ3:HAB3	1.99	0.44
1:B:415:GLY:C	1:B:417:CYS:N	2.72	0.43
1:B:435:PHE:CE1	1:B:510:ILE:HG21	2.54	0.43
1:B:461:PHE:HB2	1:B:472:LYS:HE2	1.99	0.43
1:A:404:PHE:CE2	1:A:410:LEU:HD12	2.53	0.43
1:B:394:ARG:HD2	1:B:403:LEU:HD22	2.00	0.43
1:A:316:VAL:HG23	1:A:485:THR:CG2	2.49	0.41
1:B:538:ASP:HB3	2:D:689:ILE:HD11	2.02	0.41
1:B:458:VAL:HG13	1:B:459[B]:TYR:CD1	2.56	0.40
1:A:329:SER:OG	1:A:330:GLU:N	2.54	0.40
1:A:513[B]:HIS:CG	1:B:459[B]:TYR:CD2	2.95	0.40
1:A:523:GLU:HA	1:A:523:GLU:OE1	2.22	0.40

All (1) symmetry-related close contacts are listed below. The label for Atom-2 includes the symmetry operator and encoded unit-cell translations to be applied.

Atom-1	Atom-2	Interatomic distance (Å)	Clash overlap (Å)
4:A:159:HOH:O	4:B:3:HOH:O[1_655]	2.06	0.14

5.3 Torsion angles [\(i\)](#)

5.3.1 Protein backbone [\(i\)](#)

In the following table, the Percentiles column shows the percent Ramachandran outliers of the chain as a percentile score with respect to all X-ray entries followed by that with respect to entries of similar resolution.

The Analysed column shows the number of residues for which the backbone conformation was analysed, and the total number of residues.

Mol	Chain	Analysed	Favoured	Allowed	Outliers	Percentiles
1	A	241/258 (93%)	235 (98%)	3 (1%)	3 (1%)	13 7

Continued on next page...

Continued from previous page...

Mol	Chain	Analysed	Favoured	Allowed	Outliers	Percentiles	
1	B	244/258 (95%)	242 (99%)	2 (1%)	0	100	100
2	C	8/13 (62%)	8 (100%)	0	0	100	100
2	D	9/13 (69%)	9 (100%)	0	0	100	100
All	All	502/542 (93%)	494 (98%)	5 (1%)	3 (1%)	25	19

All (3) Ramachandran outliers are listed below:

Mol	Chain	Res	Type
1	A	415	GLY
1	A	416	LYS
1	A	413	ASN

5.3.2 Protein sidechains [i](#)

In the following table, the Percentiles column shows the percent sidechain outliers of the chain as a percentile score with respect to all X-ray entries followed by that with respect to entries of similar resolution.

The Analysed column shows the number of residues for which the sidechain conformation was analysed, and the total number of residues.

Mol	Chain	Analysed	Rotameric	Outliers	Percentiles	
1	A	207/233 (89%)	195 (94%)	12 (6%)	20	15
1	B	219/233 (94%)	209 (95%)	10 (5%)	27	23
2	C	10/13 (77%)	8 (80%)	2 (20%)	1	0
2	D	9/13 (69%)	9 (100%)	0	100	100
All	All	445/492 (90%)	421 (95%)	24 (5%)	21	18

All (24) residues with a non-rotameric sidechain are listed below:

Mol	Chain	Res	Type
1	A	396	MET
1	A	421	MET
1	A	422	VAL
1	A	437	MET
1	A	465	THR
1	A	473	ASP
1	A	481	LYS
1	A	529	LYS

Continued on next page...

Continued from previous page...

Mol	Chain	Res	Type
1	A	534	VAL
1	A	540	LEU
1	A	541	LEU
1	A	545	ASP
1	B	321	ASP
1	B	397	GLU
1	B	416	LYS
1	B	417	CYS
1	B	421	MET
1	B	468	SER
1	B	497	LEU
1	B	534	VAL
1	B	536	LEU
1	B	541	LEU
2	C	688	LYS
2	C	693	LEU

Sometimes sidechains can be flipped to improve hydrogen bonding and reduce clashes. All (1) such sidechains are listed below:

Mol	Chain	Res	Type
1	A	532	ASN

5.3.3 RNA [i](#)

There are no RNA molecules in this entry.

5.4 Non-standard residues in protein, DNA, RNA chains [i](#)

There are no non-standard protein/DNA/RNA residues in this entry.

5.5 Carbohydrates [i](#)

There are no monosaccharides in this entry.

5.6 Ligand geometry [i](#)

2 ligands are modelled in this entry.

In the following table, the Counts columns list the number of bonds (or angles) for which Mogul statistics could be retrieved, the number of bonds (or angles) that are observed in the model and the number of bonds (or angles) that are defined in the Chemical Component Dictionary. The Link column lists molecule types, if any, to which the group is linked. The Z score for a bond length (or angle) is the number of standard deviations the observed value is removed from the expected value. A bond length (or angle) with $|Z| > 2$ is considered an outlier worth inspection. RMSZ is the root-mean-square of all Z scores of the bond lengths (or angles).

Mol	Type	Chain	Res	Link	Bond lengths			Bond angles		
					Counts	RMSZ	# Z > 2	Counts	RMSZ	# Z > 2
3	HZ3	B	1	-	30,32,32	3.81	10 (33%)	40,47,47	3.41	15 (37%)
3	HZ3	A	1	-	30,32,32	4.04	8 (26%)	40,47,47	3.14	17 (42%)

In the following table, the Chirals column lists the number of chiral outliers, the number of chiral centers analysed, the number of these observed in the model and the number defined in the Chemical Component Dictionary. Similar counts are reported in the Torsion and Rings columns. '-' means no outliers of that kind were identified.

Mol	Type	Chain	Res	Link	Chirals	Torsions	Rings
3	HZ3	B	1	-	-	4/20/48/48	0/5/4/4
3	HZ3	A	1	-	-	7/20/48/48	0/5/4/4

All (18) bond length outliers are listed below:

Mol	Chain	Res	Type	Atoms	Z	Observed(Å)	Ideal(Å)
3	A	1	HZ3	OAE-CAZ	12.35	1.47	1.21
3	A	1	HZ3	OAF-CBA	11.91	1.46	1.21
3	B	1	HZ3	OAE-CAZ	11.71	1.45	1.21
3	B	1	HZ3	OAF-CBA	11.66	1.45	1.21
3	A	1	HZ3	OAO-CAZ	7.00	1.48	1.33
3	A	1	HZ3	OAP-CBA	6.33	1.47	1.33
3	A	1	HZ3	CAX-CAR	-6.03	1.37	1.48
3	B	1	HZ3	OAO-CAZ	5.96	1.46	1.33
3	B	1	HZ3	CAZ-CAT	5.85	1.58	1.47
3	A	1	HZ3	CAY-CAS	-5.36	1.38	1.48
3	B	1	HZ3	CAX-CAR	-5.12	1.38	1.48
3	B	1	HZ3	CAY-CAS	-4.38	1.40	1.48
3	B	1	HZ3	OAP-CBA	4.37	1.43	1.33
3	A	1	HZ3	CAZ-CAT	4.09	1.55	1.47
3	B	1	HZ3	CAS-CAR	3.01	1.40	1.34
3	A	1	HZ3	CBA-CAU	2.85	1.52	1.47
3	B	1	HZ3	OAQ-CBC	2.63	1.47	1.44
3	B	1	HZ3	CBA-CAU	2.35	1.51	1.47

All (32) bond angle outliers are listed below:

Mol	Chain	Res	Type	Atoms	Z	Observed(°)	Ideal(°)
3	A	1	HZ3	OAE-CAZ-CAT	-9.50	105.53	125.20
3	B	1	HZ3	CAU-CBC-CAS	8.11	123.20	105.85
3	B	1	HZ3	CAR-CBB-CAT	7.70	122.34	105.85
3	B	1	HZ3	OAO-CAZ-OAE	-7.21	109.65	123.53
3	A	1	HZ3	OAF-CBA-CAU	-7.11	110.47	125.20
3	B	1	HZ3	CAB-OAP-CBA	-6.44	103.68	115.86
3	A	1	HZ3	OAP-CBA-OAF	-6.30	111.39	123.53
3	B	1	HZ3	OAF-CBA-CAU	-6.25	112.27	125.20
3	B	1	HZ3	OAQ-CBB-CAR	-5.95	91.76	100.77
3	B	1	HZ3	OAE-CAZ-CAT	-5.90	112.99	125.20
3	A	1	HZ3	CAN-CAY-CAS	-5.72	113.51	120.91
3	A	1	HZ3	CAR-CBB-CAT	5.11	116.79	105.85
3	B	1	HZ3	OAQ-CBC-CAS	-5.11	93.04	100.77
3	B	1	HZ3	OAP-CBA-OAF	-5.07	113.77	123.53
3	A	1	HZ3	CAU-CBC-CAS	4.83	116.18	105.85
3	A	1	HZ3	CAA-OAO-CAZ	-4.54	107.28	115.86
3	B	1	HZ3	OAO-CAZ-CAT	4.49	120.31	112.30
3	A	1	HZ3	OAQ-CBB-CAR	-4.32	94.23	100.77
3	A	1	HZ3	CAM-CAY-CAS	3.93	126.00	120.91
3	B	1	HZ3	OAQ-CBC-CAU	-3.91	93.73	100.69
3	A	1	HZ3	OAO-CAZ-CAT	3.38	118.32	112.30
3	B	1	HZ3	CAN-CAY-CAS	-3.19	116.78	120.91
3	A	1	HZ3	OAQ-CBC-CAU	-3.13	95.12	100.69
3	A	1	HZ3	OAO-CAZ-OAE	-3.11	117.54	123.53
3	A	1	HZ3	CAH-CAL-CAX	-2.80	117.53	120.78
3	B	1	HZ3	OAQ-CBB-CAT	-2.77	95.76	100.69
3	A	1	HZ3	OAQ-CBC-CAS	-2.55	96.91	100.77
3	A	1	HZ3	CAK-CAX-CAR	-2.48	117.70	120.91
3	A	1	HZ3	CAL-CAX-CAK	2.44	122.06	118.59
3	B	1	HZ3	CBB-CAT-CAZ	2.29	128.75	122.29
3	A	1	HZ3	OAQ-CBB-CAT	-2.13	96.89	100.69
3	B	1	HZ3	CAH-CAL-CAX	-2.04	118.41	120.78

There are no chirality outliers.

All (11) torsion outliers are listed below:

Mol	Chain	Res	Type	Atoms
3	A	1	HZ3	CAU-CBA-OAP-CAB
3	A	1	HZ3	OAF-CBA-OAP-CAB
3	B	1	HZ3	CAT-CAZ-OAO-CAA
3	A	1	HZ3	OAE-CAZ-OAO-CAA

Continued on next page...

Continued from previous page...

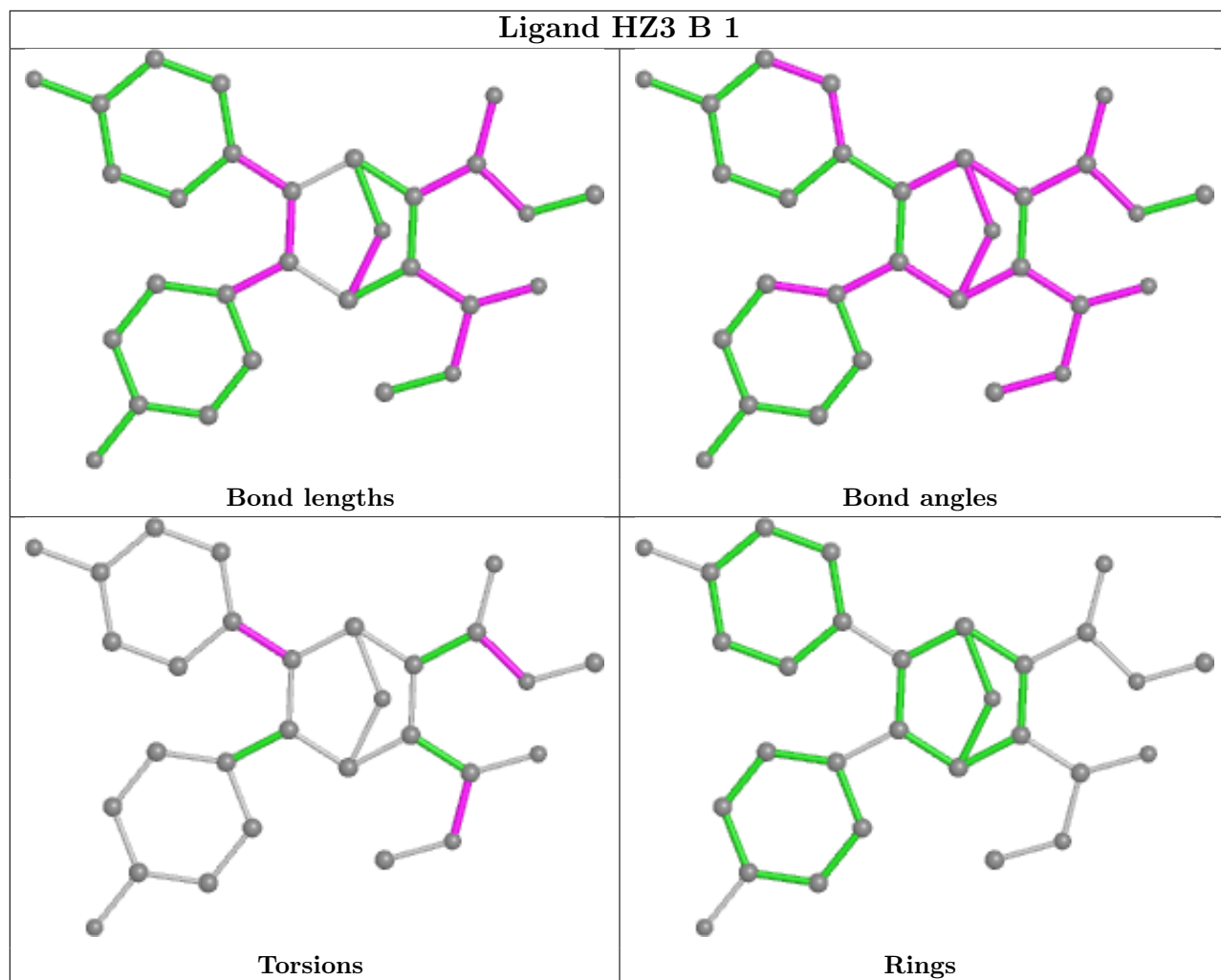
Mol	Chain	Res	Type	Atoms
3	B	1	HZ3	OAE-CAZ-OAO-CAA
3	B	1	HZ3	OAF-CBA-OAP-CAB
3	A	1	HZ3	CBB-CAR-CAX-CAK
3	A	1	HZ3	CBB-CAR-CAX-CAL
3	A	1	HZ3	CAS-CAR-CAX-CAK
3	A	1	HZ3	CAS-CAR-CAX-CAL
3	B	1	HZ3	CBB-CAR-CAX-CAK

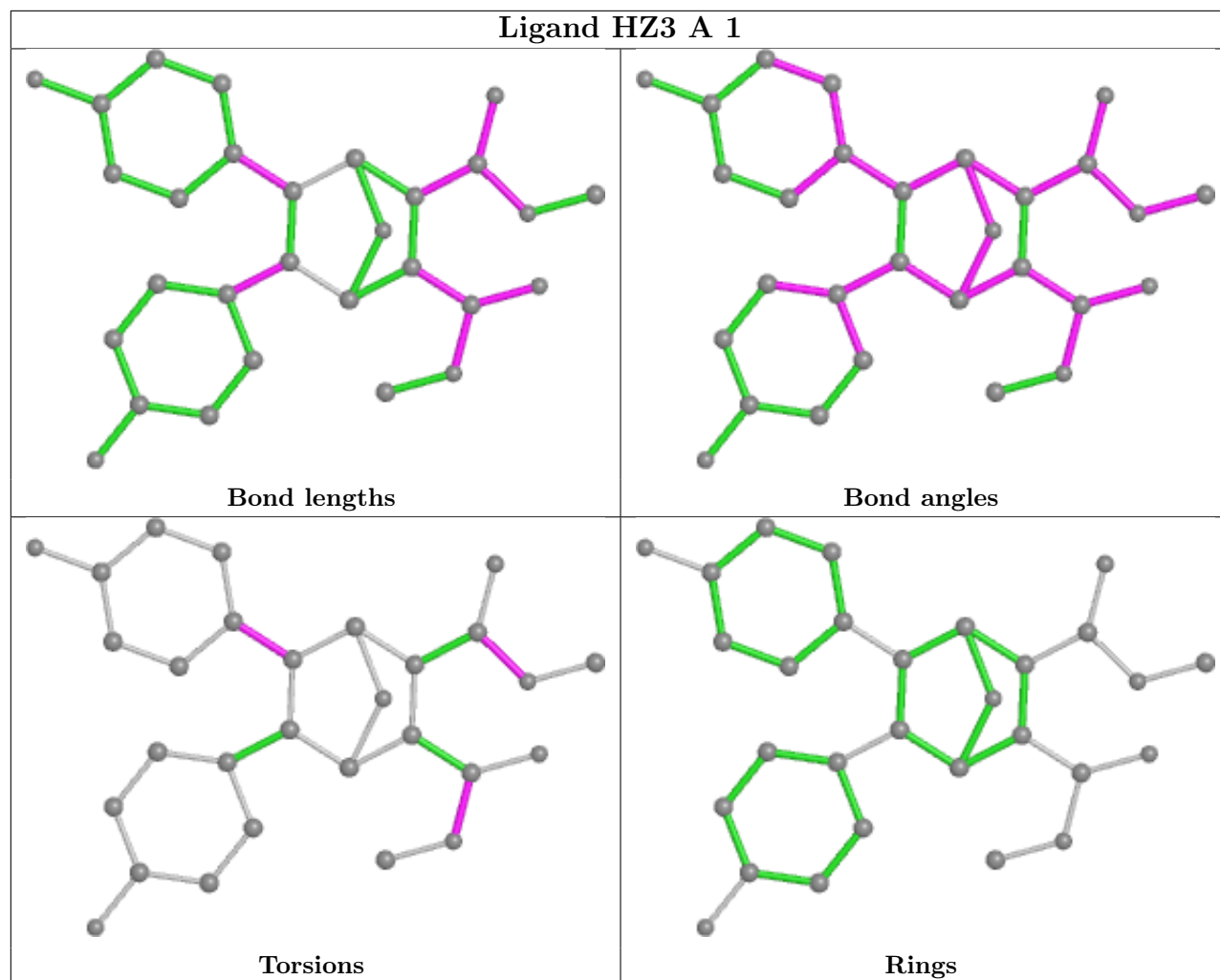
There are no ring outliers.

2 monomers are involved in 39 short contacts:

Mol	Chain	Res	Type	Clashes	Symm-Clashes
3	B	1	HZ3	19	0
3	A	1	HZ3	20	0

The following is a two-dimensional graphical depiction of Mogul quality analysis of bond lengths, bond angles, torsion angles, and ring geometry for all instances of the Ligand of Interest. In addition, ligands with molecular weight > 250 and outliers as shown on the validation Tables will also be included. For torsion angles, if less than 5% of the Mogul distribution of torsion angles is within 10 degrees of the torsion angle in question, then that torsion angle is considered an outlier. Any bond that is central to one or more torsion angles identified as an outlier by Mogul will be highlighted in the graph. For rings, the root-mean-square deviation (RMSD) between the ring in question and similar rings identified by Mogul is calculated over all ring torsion angles. If the average RMSD is greater than 60 degrees and the minimal RMSD between the ring in question and any Mogul-identified rings is also greater than 60 degrees, then that ring is considered an outlier. The outliers are highlighted in purple. The color gray indicates Mogul did not find sufficient equivalents in the CSD to analyse the geometry.





5.7 Other polymers [i](#)

There are no such residues in this entry.

5.8 Polymer linkage issues [i](#)

There are no chain breaks in this entry.

6 Fit of model and data

6.1 Protein, DNA and RNA chains

In the following table, the column labelled ‘#RSRZ > 2’ contains the number (and percentage) of RSRZ outliers, followed by percent RSRZ outliers for the chain as percentile scores relative to all X-ray entries and entries of similar resolution. The OWAB column contains the minimum, median, 95th percentile and maximum values of the occupancy-weighted average B-factor per residue. The column labelled ‘Q < 0.9’ lists the number of (and percentage) of residues with an average occupancy less than 0.9.

Mol	Chain	Analysed	<RSRZ>	#RSRZ>2	OWAB(Å ²)	Q<0.9
1	A	242/258 (93%)	0.28	26 (10%) 6 5	9, 21, 48, 53	5 (2%)
1	B	242/258 (93%)	-0.29	9 (3%) 41 41	9, 17, 30, 37	1 (0%)
2	C	10/13 (76%)	1.11	3 (30%) 0 0	31, 34, 38, 41	0
2	D	11/13 (84%)	0.59	2 (18%) 1 1	20, 23, 25, 28	0
All	All	505/542 (93%)	0.03	40 (7%) 12 11	9, 19, 43, 53	6 (1%)

All (40) RSRZ outliers are listed below:

Mol	Chain	Res	Type	RSRZ
1	A	415	GLY	11.6
1	A	336	PRO	7.3
1	A	461	PHE	7.2
1	A	462	LEU	7.0
1	A	340	ALA	6.6
1	A	335	ARG	6.0
1	A	459	TYR	5.8
1	A	467	LYS	5.5
1	A	463	SER	5.5
1	A	413	ASN	5.2
1	A	331	TYR	5.1
1	B	467	LYS	4.8
1	A	466	LEU	4.7
1	B	550	HIS	4.7
1	A	549	LEU	4.3
1	B	548	ARG	4.2
1	A	526	TYR	3.9
1	A	417	CYS	3.8
2	D	686	LYS	3.6
2	C	687	HIS	3.6
2	D	687	HIS	3.4

Continued on next page...

Continued from previous page...

Mol	Chain	Res	Type	RSRZ
1	B	468	SER	3.3
2	C	696	ASP	3.3
1	A	533	VAL	3.3
1	B	470	GLU	3.2
1	A	469	LEU	3.0
1	A	465	THR	2.7
1	A	305	SER	2.6
1	B	466	LEU	2.5
1	A	419	GLU	2.5
1	A	468	SER	2.4
1	A	548	ARG	2.4
2	C	691	HIS	2.4
1	A	418	VAL	2.4
1	A	531	LYS	2.3
1	A	414	GLN	2.2
1	B	465	THR	2.2
1	B	461	PHE	2.1
1	B	549	LEU	2.1
1	A	373	HIS	2.1

6.2 Non-standard residues in protein, DNA, RNA chains [i](#)

There are no non-standard protein/DNA/RNA residues in this entry.

6.3 Carbohydrates [i](#)

There are no monosaccharides in this entry.

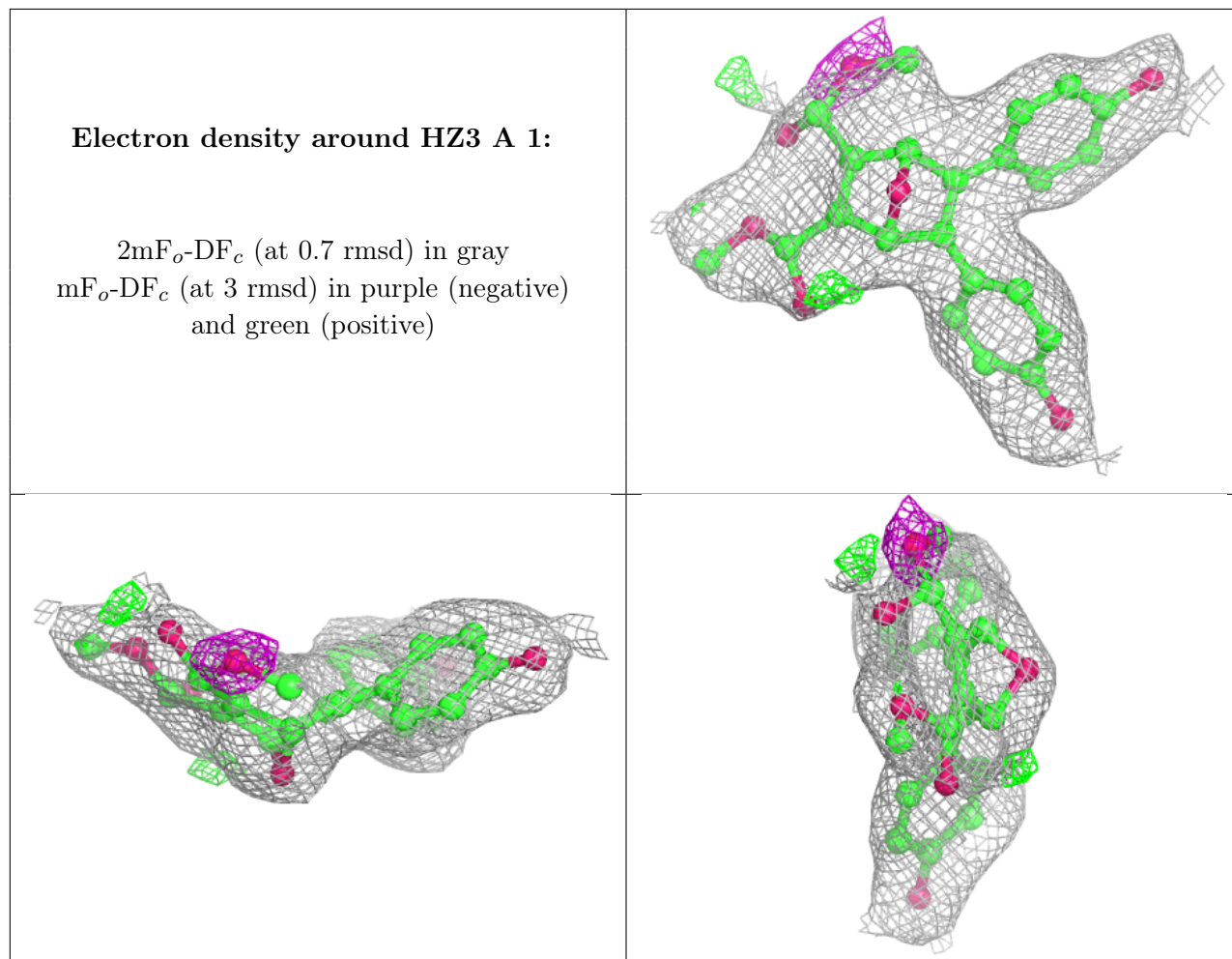
6.4 Ligands [i](#)

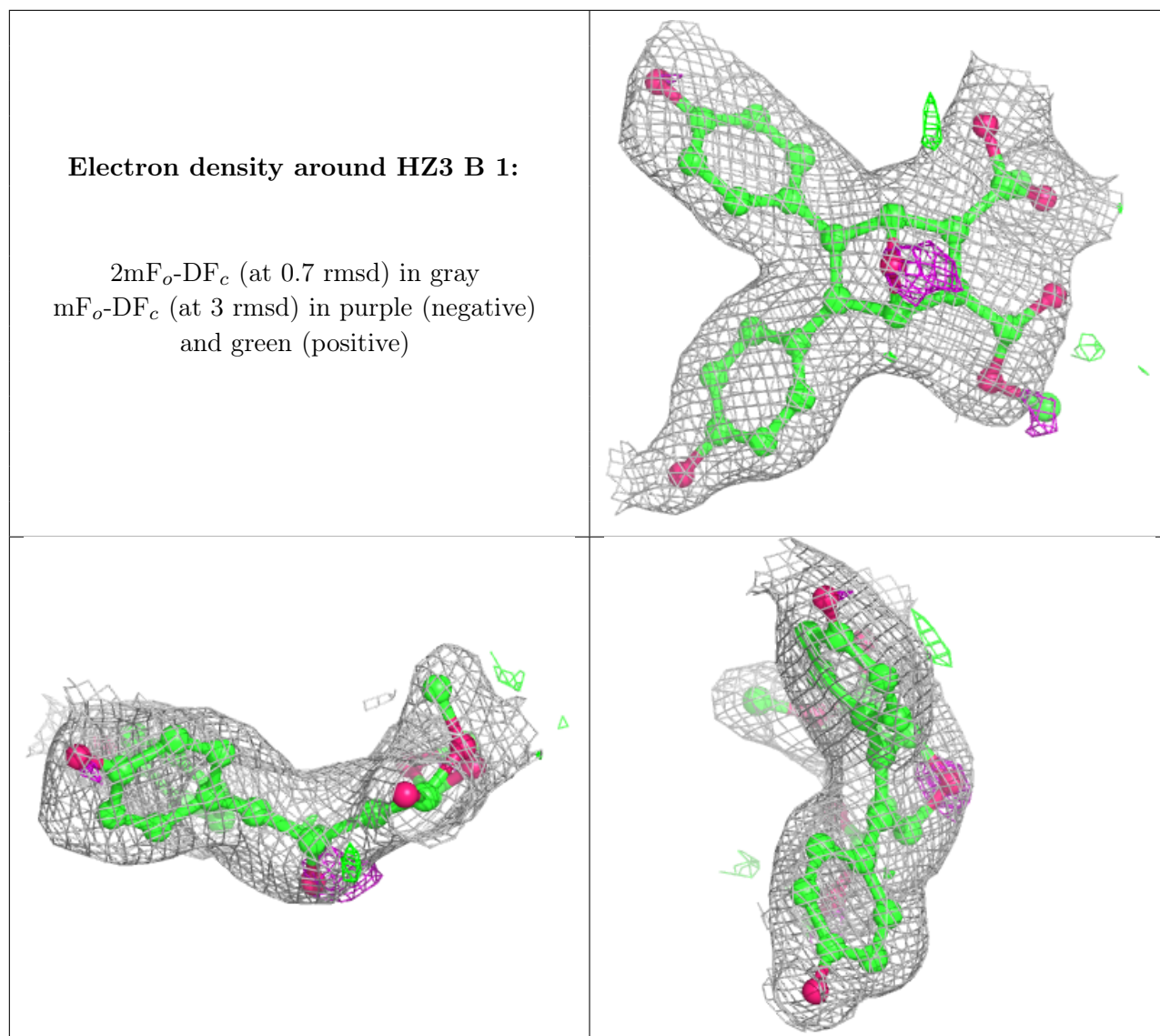
In the following table, the Atoms column lists the number of modelled atoms in the group and the number defined in the chemical component dictionary. The B-factors column lists the minimum, median, 95th percentile and maximum values of B factors of atoms in the group. The column labelled 'Q< 0.9' lists the number of atoms with occupancy less than 0.9.

Mol	Type	Chain	Res	Atoms	RSCC	RSR	B-factors(Å ²)	Q<0.9
3	HZ3	A	1	29/29	0.87	0.12	46,53,68,69	0
3	HZ3	B	1	29/29	0.87	0.14	35,50,57,59	0

The following is a graphical depiction of the model fit to experimental electron density of all

instances of the Ligand of Interest. In addition, ligands with molecular weight > 250 and outliers as shown on the geometry validation Tables will also be included. Each fit is shown from different orientation to approximate a three-dimensional view.





6.5 Other polymers [\(i\)](#)

There are no such residues in this entry.