



Full wwPDB X-ray Structure Validation Report ⓘ

May 15, 2020 – 12:39 pm BST

PDB ID : 1PHN
Title : STRUCTURE OF PHYCOCYANIN FROM CYANIDIUM CALDARIUM AT
1.65Å RESOLUTION
Authors : Stec, B.; Troxler, R.F.; Teeter, M.M.
Deposited on : 1995-06-21
Resolution : 1.65 Å(reported)

This is a Full wwPDB X-ray Structure Validation Report for a publicly released PDB entry.

We welcome your comments at validation@mail.wwpdb.org

A user guide is available at

<https://www.wwpdb.org/validation/2017/XrayValidationReportHelp>

with specific help available everywhere you see the ⓘ symbol.

The following versions of software and data (see [references ⓘ](#)) were used in the production of this report:

MolProbity : 4.02b-467
Mogul : 1.8.5 (274361), CSD as541be (2020)
Xtriage (Phenix) : 1.13
EDS : 2.11
buster-report : 1.1.7 (2018)
Percentile statistics : 20191225.v01 (using entries in the PDB archive December 25th 2019)
Refmac : 5.8.0158
CCP4 : 7.0.044 (Gargrove)
Ideal geometry (proteins) : Engh & Huber (2001)
Ideal geometry (DNA, RNA) : Parkinson et al. (1996)
Validation Pipeline (wwPDB-VP) : 2.11

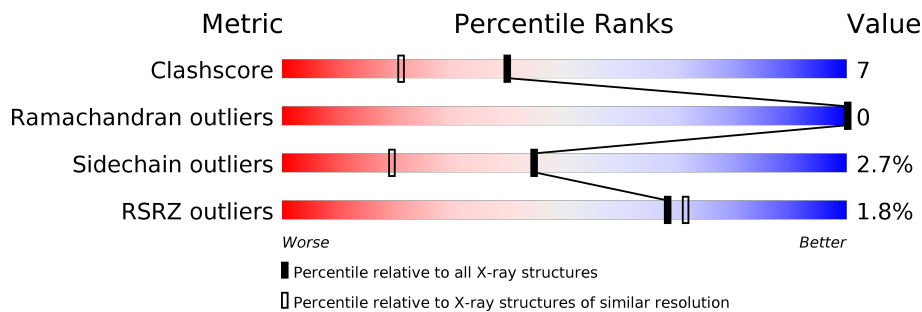
1 Overall quality at a glance

The following experimental techniques were used to determine the structure:

X-RAY DIFFRACTION



The reported resolution of this entry is 1.65 Å.

Percentile scores (ranging between 0-100) for global validation metrics of the entry are shown in the following graphic. The table shows the number of entries on which the scores are based.



Metric	Whole archive (#Entries)	Similar resolution (#Entries, resolution range(Å))
Clashscore	141614	1931 (1.66-1.66)
Ramachandran outliers	138981	1891 (1.66-1.66)
Sidechain outliers	138945	1891 (1.66-1.66)
RSRZ outliers	127900	1791 (1.66-1.66)

The table below summarises the geometric issues observed across the polymeric chains and their fit to the electron density. The red, orange, yellow and green segments on the lower bar indicate the fraction of residues that contain outliers for ≥ 3 , 2, 1 and 0 types of geometric quality criteria respectively. A grey segment represents the fraction of residues that are not modelled. The numeric value for each fraction is indicated below the corresponding segment, with a dot representing fractions $\leq 5\%$. The upper red bar (where present) indicates the fraction of residues that have poor fit to the electron density. The numeric value is given above the bar.

Mol	Chain	Length	Quality of chain
1	A	162	
2	B	172	

The following table lists non-polymeric compounds, carbohydrate monomers and non-standard residues in protein, DNA, RNA chains that are outliers for geometric or electron-density-fit criteria:

Mol	Type	Chain	Res	Chirality	Geometry	Clashes	Electron density
4	PEB	B	182	X	-	-	-

2 Entry composition [i](#)

There are 5 unique types of molecules in this entry. The entry contains 3208 atoms, of which 0 are hydrogens and 0 are deuteriums.

In the tables below, the ZeroOcc column contains the number of atoms modelled with zero occupancy, the AltConf column contains the number of residues with at least one atom in alternate conformation and the Trace column contains the number of residues modelled with at most 2 atoms.

- Molecule 1 is a protein called PHYCOCYANIN.

Mol	Chain	Residues	Atoms					ZeroOcc	AltConf	Trace
			Total	C	N	O	S			
1	A	162	1231	771	212	242	6	0	0	0

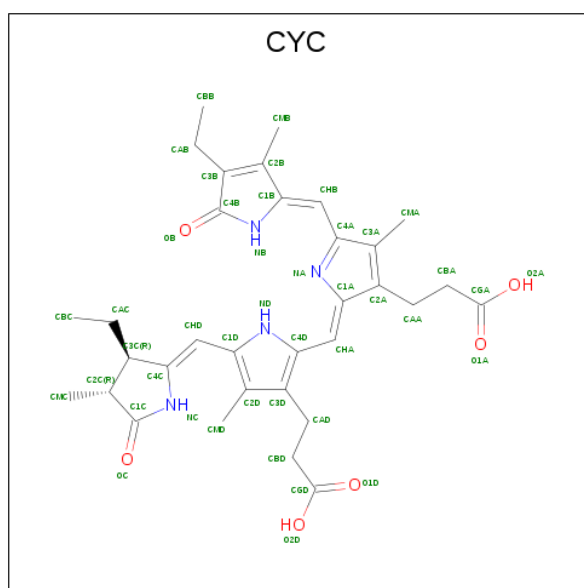
- Molecule 2 is a protein called PHYCOCYANIN.

Mol	Chain	Residues	Atoms					ZeroOcc	AltConf	Trace
			Total	C	N	O	S			
2	B	172	1276	787	226	254	9	0	0	0

There is a discrepancy between the modelled and reference sequences:

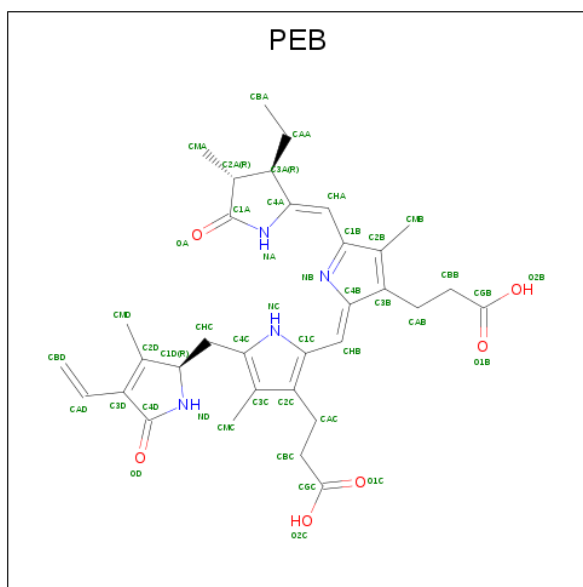
Chain	Residue	Modelled	Actual	Comment	Reference
B	72	MEN	THR	CONFLICT	UNP P00311

- Molecule 3 is PHYCOCYANOBILIN (three-letter code: CYC) (formula: $C_{33}H_{40}N_4O_6$).



Mol	Chain	Residues	Atoms				ZeroOcc	AltConf
3	A	1	Total	C	N	O	0	0
			43	33	4	6		
3	B	1	Total	C	N	O	0	0
			43	33	4	6		

- Molecule 4 is PHYCOERYTHROBILIN (three-letter code: PEB) (formula: $C_{33}H_{40}N_4O_6$).



Mol	Chain	Residues	Atoms				ZeroOcc	AltConf
4	B	1	Total	C	N	O	0	0
			43	33	4	6		


- Molecule 5 is water.

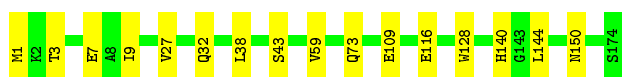
Mol	Chain	Residues	Atoms		ZeroOcc	AltConf
5	A	280	Total	O	0	0
			280	280		
5	B	292	Total	O	0	0
			292	292		

3 Residue-property plots [i](#)


These plots are drawn for all protein, RNA and DNA chains in the entry. The first graphic for a chain summarises the proportions of the various outlier classes displayed in the second graphic. The second graphic shows the sequence view annotated by issues in geometry and electron density. Residues are color-coded according to the number of geometric quality criteria for which they contain at least one outlier: green = 0, yellow = 1, orange = 2 and red = 3 or more. A red dot above a residue indicates a poor fit to the electron density ($RSRZ > 2$). Stretches of 2 or more consecutive residues without any outlier are shown as a green connector. Residues present in the sample, but not in the model, are shown in grey.

- Molecule 1: PHYCOCYANIN

Chain A:  90% 10%



- Molecule 2: PHYCOCYANIN

Chain B:  3% 88% 10%



4 Data and refinement statistics

Property	Value	Source
Space group	H 3 2	Depositor
Cell constants a, b, c, α , β , γ	106.42Å 106.42Å 176.18Å 90.00° 90.00° 120.00°	Depositor
Resolution (Å)	10.00 – 1.65 27.22 – 1.65	Depositor EDS
% Data completeness (in resolution range)	(Not available) (10.00-1.65) 97.3 (27.22-1.65)	Depositor EDS
R_{merge}	0.09	Depositor
R_{sym}	(Not available)	Depositor
$\langle I/\sigma(I) \rangle$ ¹	2.12 (at 1.65Å)	Xtrriage
Refinement program	X-PLOR	Depositor
R, R_{free}	0.183 , 0.272 0.190 , (Not available)	Depositor DCC
R_{free} test set	No test flags present.	wwPDB-VP
Wilson B-factor (Å ²)	7.8	Xtrriage
Anisotropy	0.059	Xtrriage
Bulk solvent k_{sol} (e/Å ³), B_{sol} (Å ²)	0.24 , 73.9	EDS
L-test for twinning ²	$\langle L \rangle = 0.44$, $\langle L^2 \rangle = 0.26$	Xtrriage
Estimated twinning fraction	No twinning to report.	Xtrriage
F_o, F_c correlation	0.95	EDS
Total number of atoms	3208	wwPDB-VP
Average B, all atoms (Å ²)	19.0	wwPDB-VP

Xtrriage's analysis on translational NCS is as follows: *The largest off-origin peak in the Patterson function is 7.86% of the height of the origin peak. No significant pseudotranslation is detected.*

¹Intensities estimated from amplitudes.

²Theoretical values of $\langle |L| \rangle$, $\langle L^2 \rangle$ for acentric reflections are 0.5, 0.333 respectively for untwinned datasets, and 0.375, 0.2 for perfectly twinned datasets.

5 Model quality [i](#)

5.1 Standard geometry [i](#)

Bond lengths and bond angles in the following residue types are not validated in this section: CYC, MEN, PEB

The Z score for a bond length (or angle) is the number of standard deviations the observed value is removed from the expected value. A bond length (or angle) with $|Z| > 5$ is considered an outlier worth inspection. RMSZ is the root-mean-square of all Z scores of the bond lengths (or angles).

Mol	Chain	Bond lengths		Bond angles	
		RMSZ	# Z >5	RMSZ	# Z >5
1	A	0.50	0/1254	0.65	0/1702
2	B	0.46	0/1278	0.71	1/1726 (0.1%)
All	All	0.48	0/2532	0.68	1/3428 (0.0%)

There are no bond length outliers.

All (1) bond angle outliers are listed below:

Mol	Chain	Res	Type	Atoms	Z	Observed(°)	Ideal(°)
2	B	79	ARG	NE-CZ-NH2	7.40	124.00	120.30

There are no chirality outliers.

There are no planarity outliers.

5.2 Too-close contacts [i](#)

In the following table, the Non-H and H(model) columns list the number of non-hydrogen atoms and hydrogen atoms in the chain respectively. The H(added) column lists the number of hydrogen atoms added and optimized by MolProbity. The Clashes column lists the number of clashes within the asymmetric unit, whereas Symm-Clashes lists symmetry related clashes.

Mol	Chain	Non-H	H(model)	H(added)	Clashes	Symm-Clashes
1	A	1231	0	1200	11	0
2	B	1276	0	1280	23	0
3	A	43	0	36	2	0
3	B	43	0	37	1	0
4	B	43	0	35	9	0
5	A	280	0	0	3	0
5	B	292	0	0	2	0
All	All	3208	0	2588	38	0

The all-atom clashscore is defined as the number of clashes found per 1000 atoms (including hydrogen atoms). The all-atom clashscore for this structure is 7.

All (38) close contacts within the same asymmetric unit are listed below, sorted by their clash magnitude.

Atom-1	Atom-2	Interatomic distance (Å)	Clash overlap (Å)
4:B:182:PEB:CMC	4:B:182:PEB:HMD2	1.73	1.19
4:B:182:PEB:HMC1	4:B:182:PEB:HMD2	1.28	1.08
2:B:90:ILE:HG21	4:B:182:PEB:HBD1	1.56	0.88
2:B:90:ILE:CG2	4:B:182:PEB:HBD1	2.09	0.83
4:B:182:PEB:HMC3	4:B:182:PEB:HMD2	1.63	0.80
2:B:106:ILE:HG12	2:B:110:ARG:NH1	1.98	0.79
2:B:57:ARG:HD3	5:B:328:HOH:O	1.86	0.75
2:B:97:TYR:HB2	2:B:106:ILE:HD12	1.69	0.73
4:B:182:PEB:HMC1	4:B:182:PEB:CMD	2.13	0.69
4:B:182:PEB:CMC	4:B:182:PEB:CMD	2.64	0.65
1:A:128:TRP:CD2	3:A:184:CYC:HMC3	2.38	0.59
2:B:110:ARG:O	2:B:113:ASN:HB2	2.02	0.59
2:B:106:ILE:HG12	2:B:110:ARG:HH12	1.67	0.58
2:B:108:ASP:O	2:B:112:LEU:HB2	2.02	0.58
1:A:59:VAL:HG11	3:A:184:CYC:HMC1	1.88	0.55
1:A:73:GLN:HB3	5:A:277:HOH:O	2.05	0.54
2:B:97:TYR:HD2	2:B:106:ILE:HD11	1.71	0.54
2:B:94:TYR:HE2	2:B:110:ARG:NH1	2.05	0.54
2:B:7:LYS:O	2:B:11:GLN:HG3	2.09	0.52
1:A:1:MET:HA	1:A:109:GLU:OE2	2.11	0.51
2:B:115:LEU:O	2:B:115:LEU:HD12	2.12	0.49
4:B:182:PEB:HNA	4:B:182:PEB:HMB2	1.79	0.48
2:B:111:CYS:SG	2:B:172:ALA:CB	3.03	0.47
1:A:9:ILE:HB	2:B:1:MET:HE3	1.95	0.47
2:B:106:ILE:O	2:B:110:ARG:HD3	2.15	0.47
2:B:122:LEU:HD11	4:B:182:PEB:HAC2	1.98	0.44
2:B:94:TYR:HD2	2:B:106:ILE:HD13	1.84	0.43
2:B:7:LYS:HD3	5:B:248:HOH:O	2.19	0.43
1:A:3:THR:O	1:A:7:GLU:HG3	2.20	0.42
2:B:106:ILE:HD12	2:B:106:ILE:HG21	1.71	0.42
1:A:43:SER:CB	1:A:144:LEU:HD21	2.49	0.42
2:B:97:TYR:CB	2:B:106:ILE:HD12	2.44	0.42
1:A:38:LEU:HD21	5:A:421:HOH:O	2.20	0.42
1:A:43:SER:HB3	1:A:144:LEU:HD21	2.02	0.41
1:A:116:GLU:HG3	5:A:271:HOH:O	2.20	0.41
1:A:27:VAL:HG21	2:B:100:ILE:HD11	2.01	0.41
2:B:2:LEU:HD13	2:B:7:LYS:HA	2.02	0.41

Continued on next page...

Continued from previous page...

Atom-1	Atom-2	Interatomic distance (Å)	Clash overlap (Å)
2:B:36:LYS:HE2	3:B:183:CYC:HMD3	2.03	0.41

There are no symmetry-related clashes.

5.3 Torsion angles [i](#)

5.3.1 Protein backbone [i](#)

In the following table, the Percentiles column shows the percent Ramachandran outliers of the chain as a percentile score with respect to all X-ray entries followed by that with respect to entries of similar resolution.

The Analysed column shows the number of residues for which the backbone conformation was analysed, and the total number of residues.

Mol	Chain	Analysed	Favoured	Allowed	Outliers	Percentiles	
1	A	160/162 (99%)	158 (99%)	2 (1%)	0	100	100
2	B	169/172 (98%)	165 (98%)	4 (2%)	0	100	100
All	All	329/334 (98%)	323 (98%)	6 (2%)	0	100	100

There are no Ramachandran outliers to report.

5.3.2 Protein sidechains [i](#)

In the following table, the Percentiles column shows the percent sidechain outliers of the chain as a percentile score with respect to all X-ray entries followed by that with respect to entries of similar resolution.

The Analysed column shows the number of residues for which the sidechain conformation was analysed, and the total number of residues.

Mol	Chain	Analysed	Rotameric	Outliers	Percentiles	
1	A	124/124 (100%)	121 (98%)	3 (2%)	49	23
2	B	132/132 (100%)	128 (97%)	4 (3%)	41	15
All	All	256/256 (100%)	249 (97%)	7 (3%)	44	19

All (7) residues with a non-rotameric sidechain are listed below:

Mol	Chain	Res	Type
1	A	32	GLN
1	A	140	HIS
1	A	150	ASN
2	B	30	MET
2	B	106	ILE
2	B	113	ASN
2	B	115	LEU

Some sidechains can be flipped to improve hydrogen bonding and reduce clashes. All (4) such sidechains are listed below:

Mol	Chain	Res	Type
1	A	32	GLN
1	A	150	ASN
2	B	113	ASN
2	B	145	ASN

5.3.3 RNA [i](#)

There are no RNA molecules in this entry.

5.4 Non-standard residues in protein, DNA, RNA chains [i](#)

1 non-standard protein/DNA/RNA residue is modelled in this entry.

In the following table, the Counts columns list the number of bonds (or angles) for which Mogul statistics could be retrieved, the number of bonds (or angles) that are observed in the model and the number of bonds (or angles) that are defined in the Chemical Component Dictionary. The Link column lists molecule types, if any, to which the group is linked. The Z score for a bond length (or angle) is the number of standard deviations the observed value is removed from the expected value. A bond length (or angle) with $|Z| > 2$ is considered an outlier worth inspection. RMSZ is the root-mean-square of all Z scores of the bond lengths (or angles).

Mol	Type	Chain	Res	Link	Bond lengths			Bond angles		
					Counts	RMSZ	$\# Z > 2$	Counts	RMSZ	$\# Z > 2$
2	MEN	B	72	2	7,8,9	0.82	0	6,9,11	0.48	0

In the following table, the Chirals column lists the number of chiral outliers, the number of chiral centers analysed, the number of these observed in the model and the number defined in the Chemical Component Dictionary. Similar counts are reported in the Torsion and Rings columns. '-' means no outliers of that kind were identified.

Mol	Type	Chain	Res	Link	Chirals	Torsions	Rings
2	MEN	B	72	2	-	3/7/8/10	-

There are no bond length outliers.

There are no bond angle outliers.

There are no chirality outliers.

All (3) torsion outliers are listed below:

Mol	Chain	Res	Type	Atoms
2	B	72	MEN	CA-CB-CG-ND2
2	B	72	MEN	CA-CB-CG-OD1
2	B	72	MEN	N-CA-CB-CG

There are no ring outliers.

No monomer is involved in short contacts.

5.5 Carbohydrates [i](#)

There are no carbohydrates in this entry.

5.6 Ligand geometry [i](#)

3 ligands are modelled in this entry.

In the following table, the Counts columns list the number of bonds (or angles) for which Mogul statistics could be retrieved, the number of bonds (or angles) that are observed in the model and the number of bonds (or angles) that are defined in the Chemical Component Dictionary. The Link column lists molecule types, if any, to which the group is linked. The Z score for a bond length (or angle) is the number of standard deviations the observed value is removed from the expected value. A bond length (or angle) with $|Z| > 2$ is considered an outlier worth inspection. RMSZ is the root-mean-square of all Z scores of the bond lengths (or angles).

Mol	Type	Chain	Res	Link	Bond lengths			Bond angles		
					Counts	RMSZ	# Z > 2	Counts	RMSZ	# Z > 2
3	CYC	A	184	1	36,46,46	1.62	6 (16%)	44,67,67	3.09	13 (29%)
4	PEB	B	182	2	37,46,46	3.17	14 (37%)	39,67,67	2.74	15 (38%)
3	CYC	B	183	2	36,46,46	2.78	6 (16%)	44,67,67	1.96	8 (18%)

In the following table, the Chirals column lists the number of chiral outliers, the number of chiral centers analysed, the number of these observed in the model and the number defined in the Chemical Component Dictionary. Similar counts are reported in the Torsion and Rings columns.

'-' means no outliers of that kind were identified.

Mol	Type	Chain	Res	Link	Chirals	Torsions	Rings
3	CYC	A	184	1	-	7/21/74/74	0/4/4/4
4	PEB	B	182	2	1/1/14/19	7/20/74/74	0/4/4/4
3	CYC	B	183	2	-	5/21/74/74	0/4/4/4

All (26) bond length outliers are listed below:

Mol	Chain	Res	Type	Atoms	Z	Observed(Å)	Ideal(Å)
3	B	183	CYC	C2C-C1C	-12.37	1.41	1.52
4	B	182	PEB	C2A-C1A	-9.07	1.44	1.52
4	B	182	PEB	CMA-C2A	-8.00	1.36	1.53
3	B	183	CYC	CHA-C1A	7.75	1.41	1.35
4	B	182	PEB	CHB-C4B	6.62	1.40	1.35
4	B	182	PEB	CHC-C1D	-6.19	1.38	1.54
3	A	184	CYC	CHA-C1A	6.03	1.40	1.35
4	B	182	PEB	C1D-ND	-4.95	1.38	1.45
4	B	182	PEB	CBD-CAD	4.53	1.52	1.30
3	B	183	CYC	CMC-C2C	-4.48	1.43	1.53
4	B	182	PEB	C1A-NA	3.98	1.42	1.37
4	B	182	PEB	CAA-C3A	3.82	1.61	1.54
4	B	182	PEB	C4B-C3B	-3.51	1.40	1.45
3	A	184	CYC	C4B-C3B	-3.18	1.42	1.48
3	B	183	CYC	C1C-NC	-2.99	1.33	1.37
4	B	182	PEB	C3A-C4A	2.89	1.55	1.50
4	B	182	PEB	C3C-C4C	2.77	1.46	1.42
4	B	182	PEB	CAD-C3D	2.73	1.54	1.47
3	B	183	CYC	C4B-C3B	-2.70	1.43	1.48
3	A	184	CYC	CAD-C3D	2.62	1.55	1.52
4	B	182	PEB	C4A-NA	2.57	1.42	1.37
3	B	183	CYC	C2C-C3C	-2.55	1.47	1.54
3	A	184	CYC	C1C-NC	-2.44	1.34	1.37
4	B	182	PEB	C2A-C3A	-2.29	1.48	1.54
3	A	184	CYC	OC-C1C	2.27	1.27	1.23
3	A	184	CYC	C4C-NC	2.11	1.41	1.37

All (36) bond angle outliers are listed below:

Mol	Chain	Res	Type	Atoms	Z	Observed(°)	Ideal(°)
3	A	184	CYC	C2C-C1C-NC	8.39	115.51	108.27
3	A	184	CYC	C3B-C4B-NB	8.38	113.55	106.78
3	A	184	CYC	OC-C1C-C2C	-8.09	119.74	126.17
4	B	182	PEB	OA-C1A-C2A	-7.70	120.05	126.17

Continued on next page...

Continued from previous page...

Mol	Chain	Res	Type	Atoms	Z	Observed(°)	Ideal(°)
4	B	182	PEB	OA-C1A-NA	7.50	134.02	124.94
4	B	182	PEB	CHC-C1D-ND	7.36	122.49	113.95
3	B	183	CYC	C3B-C4B-NB	6.60	112.11	106.78
3	B	183	CYC	OB-C4B-C3B	-5.84	121.70	128.04
3	A	184	CYC	CHA-C1A-NA	-5.41	121.32	128.83
3	A	184	CYC	CAB-C3B-C4B	5.14	129.50	121.38
3	A	184	CYC	CMC-C2C-C1C	4.81	122.76	112.40
3	B	183	CYC	C1B-NB-C4B	-4.75	104.62	110.67
3	A	184	CYC	OB-C4B-C3B	-4.74	122.89	128.04
3	A	184	CYC	C1B-NB-C4B	-4.61	104.80	110.67
4	B	182	PEB	C2A-C1A-NA	-4.50	104.39	108.27
3	B	183	CYC	CMA-C3A-C4A	4.29	131.67	125.06
3	A	184	CYC	CAC-C3C-C2C	3.88	123.95	114.26
3	A	184	CYC	C2C-C3C-C4C	3.86	107.11	101.34
4	B	182	PEB	OD-C4D-C3D	-3.64	121.21	129.46
4	B	182	PEB	CMB-C2B-C1B	3.22	130.03	125.06
3	A	184	CYC	CMA-C3A-C4A	3.20	130.00	125.06
3	A	184	CYC	CBD-CAD-C3D	3.14	118.27	112.49
4	B	182	PEB	CMD-C2D-C3D	-3.06	125.75	130.06
4	B	182	PEB	CBC-CAC-C2C	2.85	117.74	112.49
3	B	183	CYC	C4D-CHA-C1A	2.83	132.18	128.81
4	B	182	PEB	CMA-C2A-C1A	2.74	118.32	112.40
3	A	184	CYC	C4D-CHA-C1A	2.63	131.95	128.81
4	B	182	PEB	CBD-CAD-C3D	-2.52	115.06	127.62
4	B	182	PEB	CAA-C3A-C4A	2.24	118.43	112.67
4	B	182	PEB	CAA-C3A-C2A	2.24	119.85	114.26
4	B	182	PEB	C3D-C4D-ND	2.17	111.53	107.26
3	B	183	CYC	C2B-C1B-NB	2.13	110.11	106.99
3	B	183	CYC	CAC-C3C-C2C	2.12	119.55	114.26
4	B	182	PEB	CHA-C1B-NB	-2.07	120.60	124.93
4	B	182	PEB	C1C-CHB-C4B	-2.04	126.38	128.81
3	B	183	CYC	CAC-C3C-C4C	2.03	117.89	112.67

All (1) chirality outliers are listed below:

Mol	Chain	Res	Type	Atom
4	B	182	PEB	C1D

All (19) torsion outliers are listed below:

Mol	Chain	Res	Type	Atoms
3	A	184	CYC	NA-C1A-CHA-C4D

Continued on next page...

Continued from previous page...

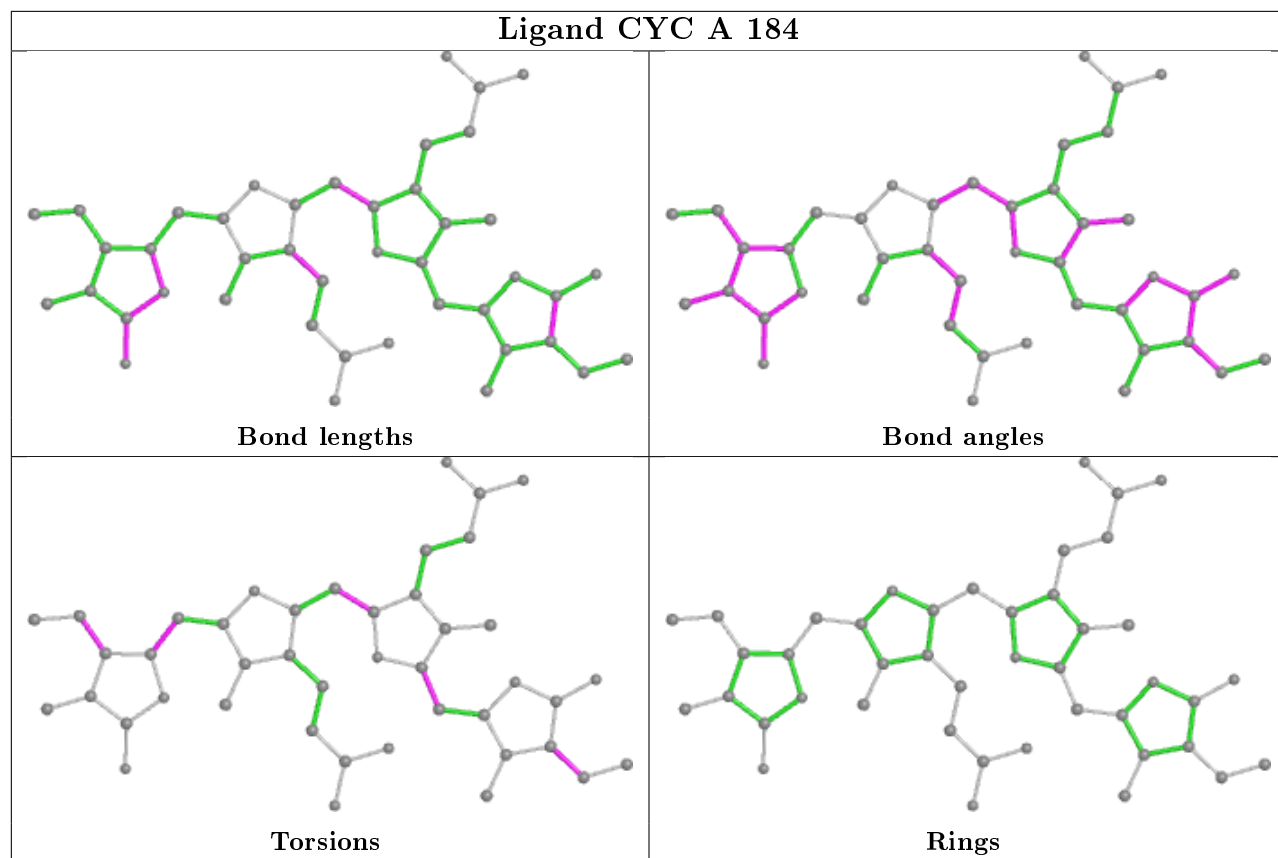
Mol	Chain	Res	Type	Atoms
3	A	184	CYC	NA-C4A-CHB-C1B
3	A	184	CYC	C3A-C4A-CHB-C1B
3	A	184	CYC	C4C-C3C-CAC-CBC
4	B	182	PEB	ND-C1D-CHC-C4C
4	B	182	PEB	C1C-C2C-CAC-CBC
4	B	182	PEB	C3C-C2C-CAC-CBC
4	B	182	PEB	NB-C1B-CHA-C4A
4	B	182	PEB	C2B-C1B-CHA-C4A
3	B	183	CYC	NA-C4A-CHB-C1B
3	B	183	CYC	C3A-C4A-CHB-C1B
3	B	183	CYC	C2C-C3C-CAC-CBC
4	B	182	PEB	C2D-C3D-CAD-CBD
3	B	183	CYC	C4C-C3C-CAC-CBC
3	A	184	CYC	C2B-C3B-CAB-CBB
3	B	183	CYC	C2B-C3B-CAB-CBB
4	B	182	PEB	C2C-CAC-CBC-CGC
3	A	184	CYC	C2A-C1A-CHA-C4D
3	A	184	CYC	NC-C4C-CHD-C1D

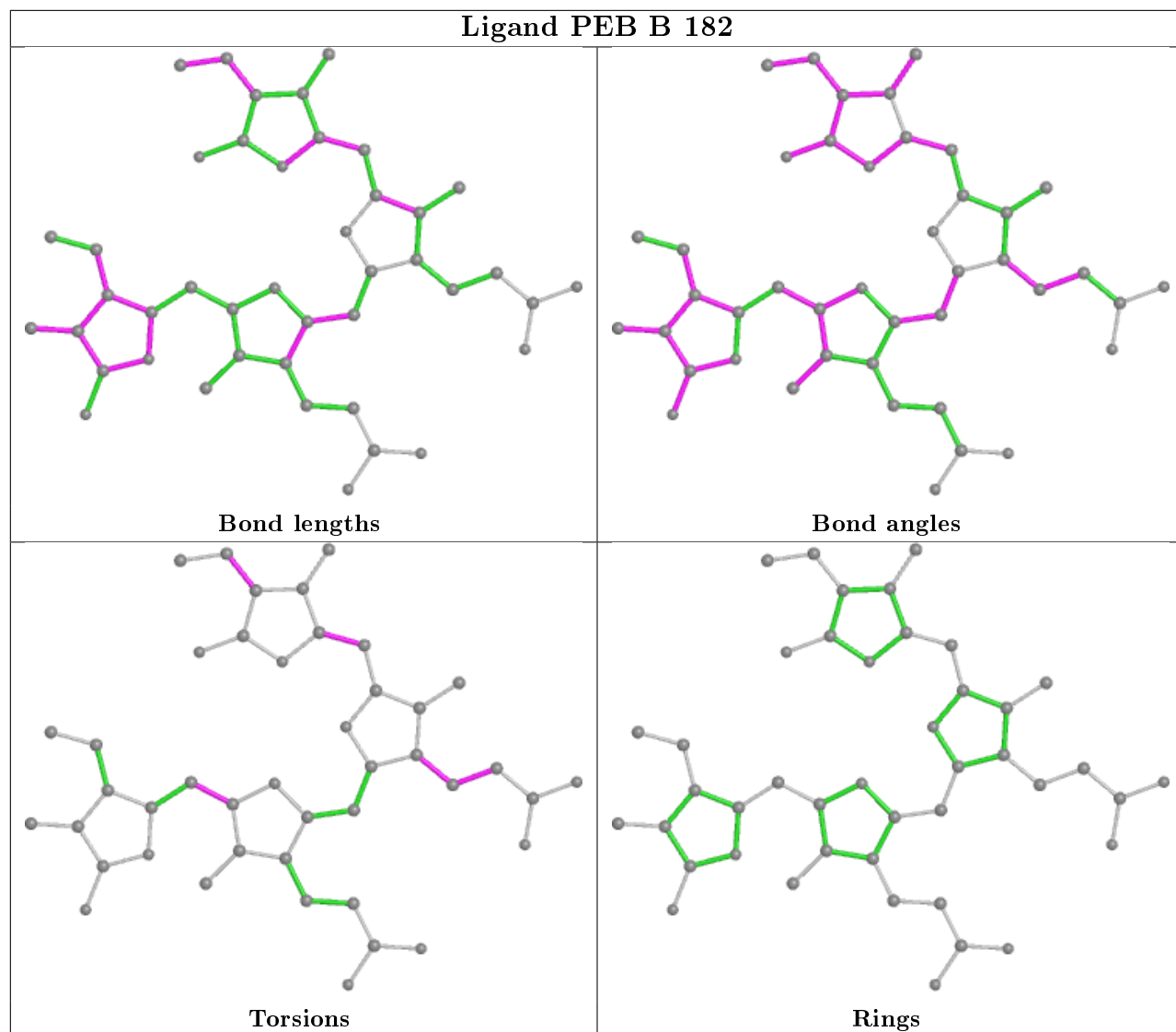
There are no ring outliers.

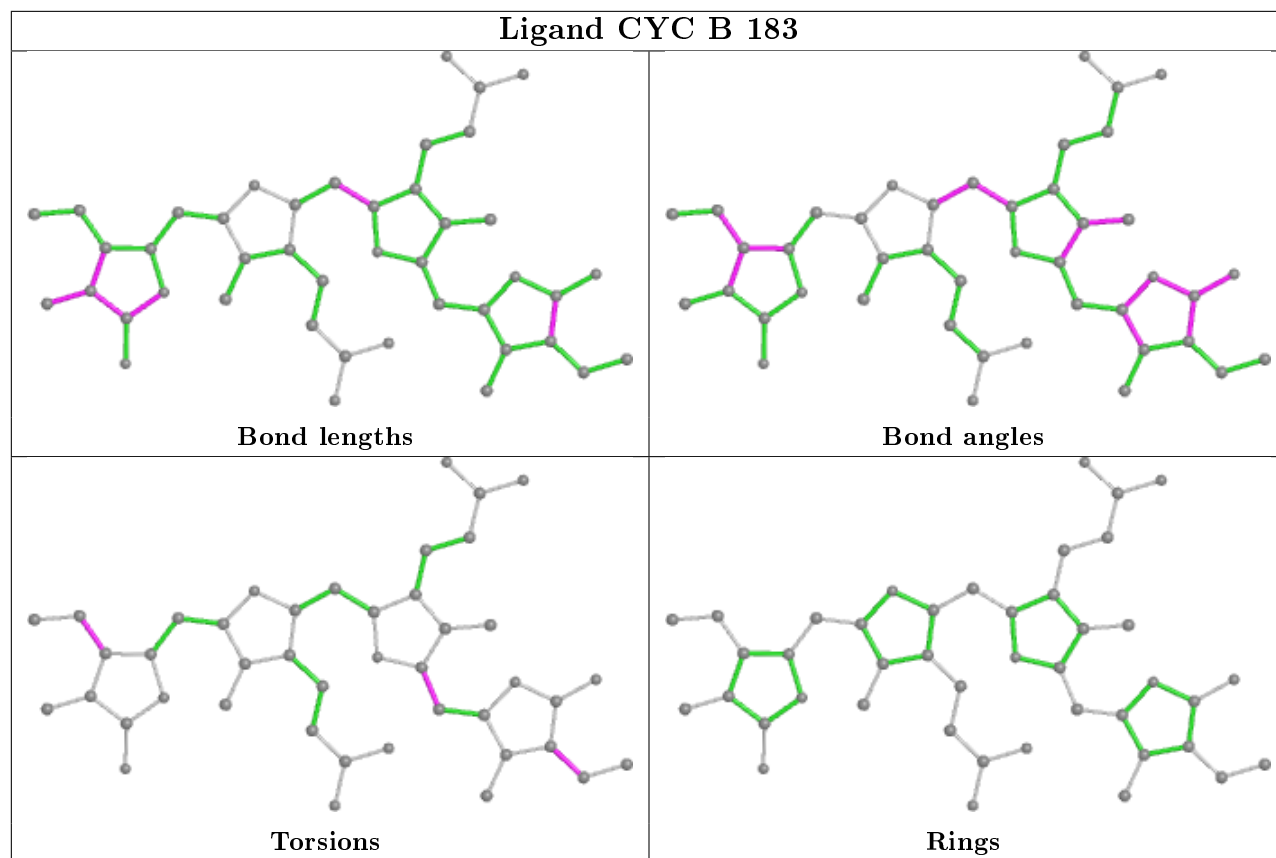
3 monomers are involved in 12 short contacts:

Mol	Chain	Res	Type	Clashes	Symm-Clashes
3	A	184	CYC	2	0
4	B	182	PEB	9	0
3	B	183	CYC	1	0

The following is a two-dimensional graphical depiction of Mogul quality analysis of bond lengths, bond angles, torsion angles, and ring geometry for all instances of the Ligand of Interest. In addition, ligands with molecular weight > 250 and outliers as shown on the validation Tables will also be included. For torsion angles, if less than 5% of the Mogul distribution of torsion angles is within 10 degrees of the torsion angle in question, then that torsion angle is considered an outlier. Any bond that is central to one or more torsion angles identified as an outlier by Mogul will be highlighted in the graph. For rings, the root-mean-square deviation (RMSD) between the ring in question and similar rings identified by Mogul is calculated over all ring torsion angles. If the average RMSD is greater than 60 degrees and the minimal RMSD between the ring in question and any Mogul-identified rings is also greater than 60 degrees, then that ring is considered an outlier. The outliers are highlighted in purple. The color gray indicates Mogul did not find sufficient equivalents in the CSD to analyse the geometry.







5.7 Other polymers [i](#)

There are no such residues in this entry.

5.8 Polymer linkage issues [i](#)

There are no chain breaks in this entry.

6 Fit of model and data [i](#)

6.1 Protein, DNA and RNA chains [i](#)

In the following table, the column labelled ‘#RSRZ> 2’ contains the number (and percentage) of RSRZ outliers, followed by percent RSRZ outliers for the chain as percentile scores relative to all X-ray entries and entries of similar resolution. The OWAB column contains the minimum, median, 95th percentile and maximum values of the occupancy-weighted average B-factor per residue. The column labelled ‘Q< 0.9’ lists the number of (and percentage) of residues with an average occupancy less than 0.9.

Mol	Chain	Analysed	<RSRZ>	#RSRZ>2	OWAB(Å ²)	Q<0.9
1	A	162/162 (100%)	-0.72	0 100 100	2, 7, 18, 31	0
2	B	171/172 (99%)	-0.30	6 (3%) 44 45	3, 12, 43, 60	0
All	All	333/334 (99%)	-0.51	6 (1%) 68 71	2, 9, 29, 60	0

All (6) RSRZ outliers are listed below:

Mol	Chain	Res	Type	RSRZ
2	B	112	LEU	5.2
2	B	113	ASN	4.7
2	B	111	CYS	3.5
2	B	110	ARG	3.4
2	B	114	GLY	2.6
2	B	109	ASP	2.2

6.2 Non-standard residues in protein, DNA, RNA chains [i](#)

In the following table, the Atoms column lists the number of modelled atoms in the group and the number defined in the chemical component dictionary. The B-factors column lists the minimum, median, 95th percentile and maximum values of B factors of atoms in the group. The column labelled ‘Q< 0.9’ lists the number of atoms with occupancy less than 0.9.

Mol	Type	Chain	Res	Atoms	RSCC	RSR	B-factors(Å ²)	Q<0.9
2	MEN	B	72	9/10	0.94	0.08	6,8,11,16	0

6.3 Carbohydrates [i](#)

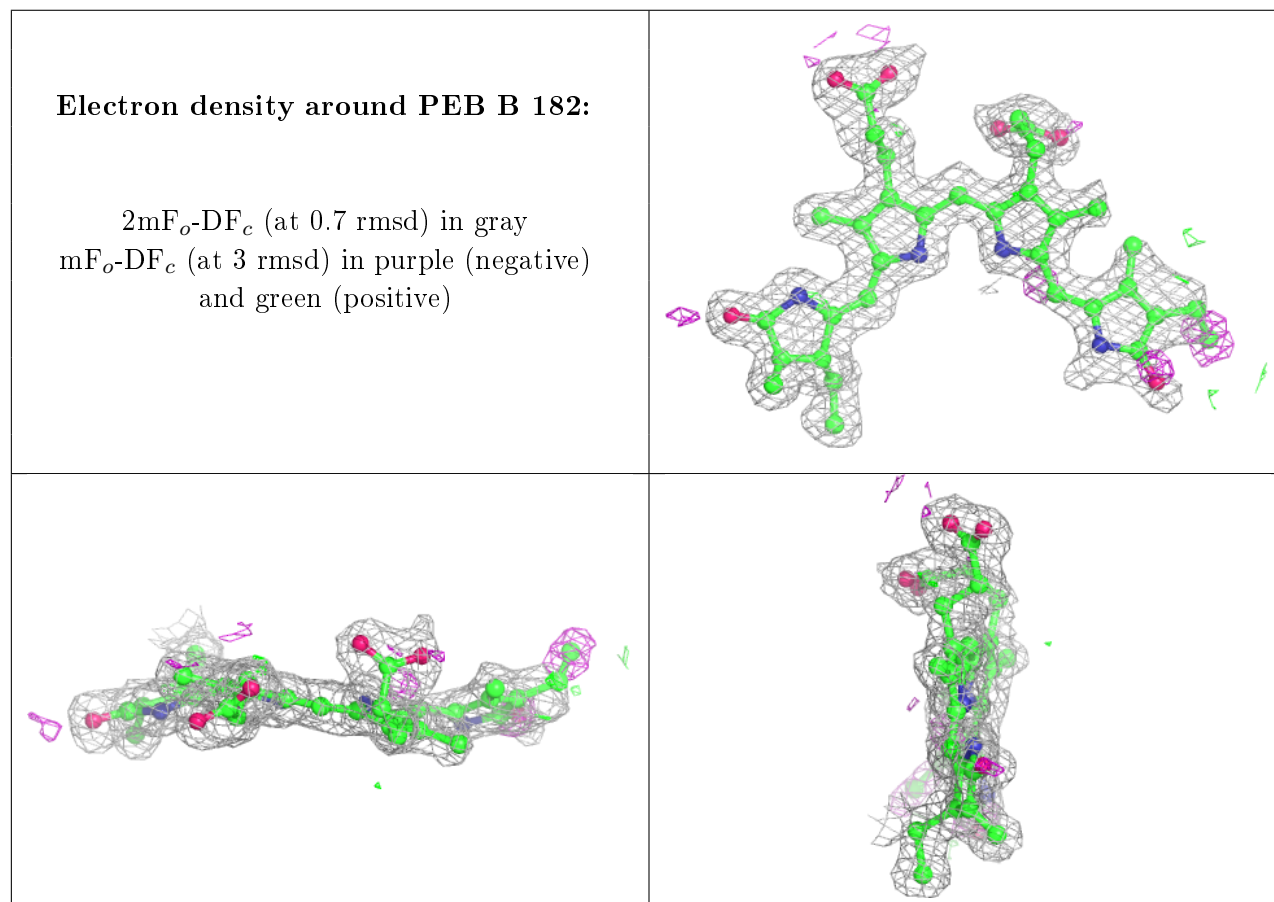
There are no carbohydrates in this entry.

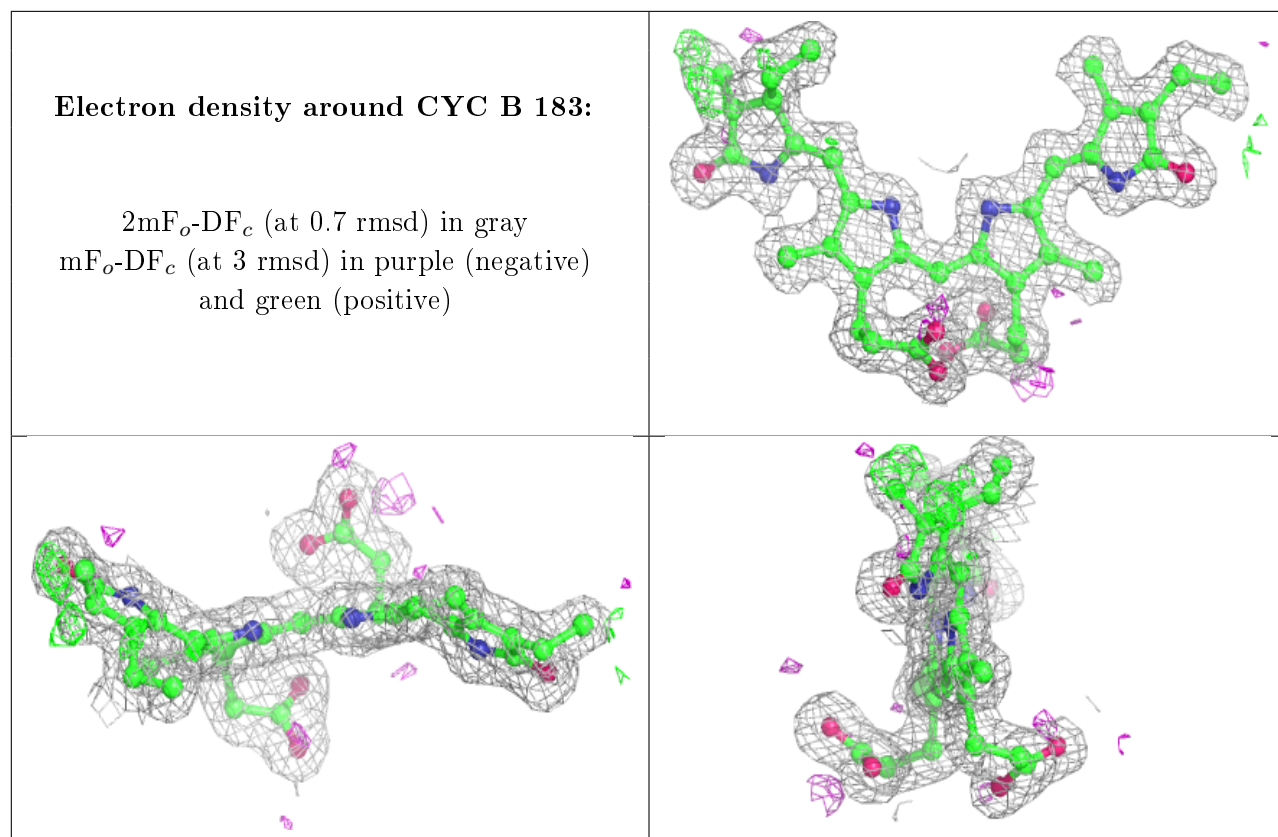
6.4 Ligands [i](#)

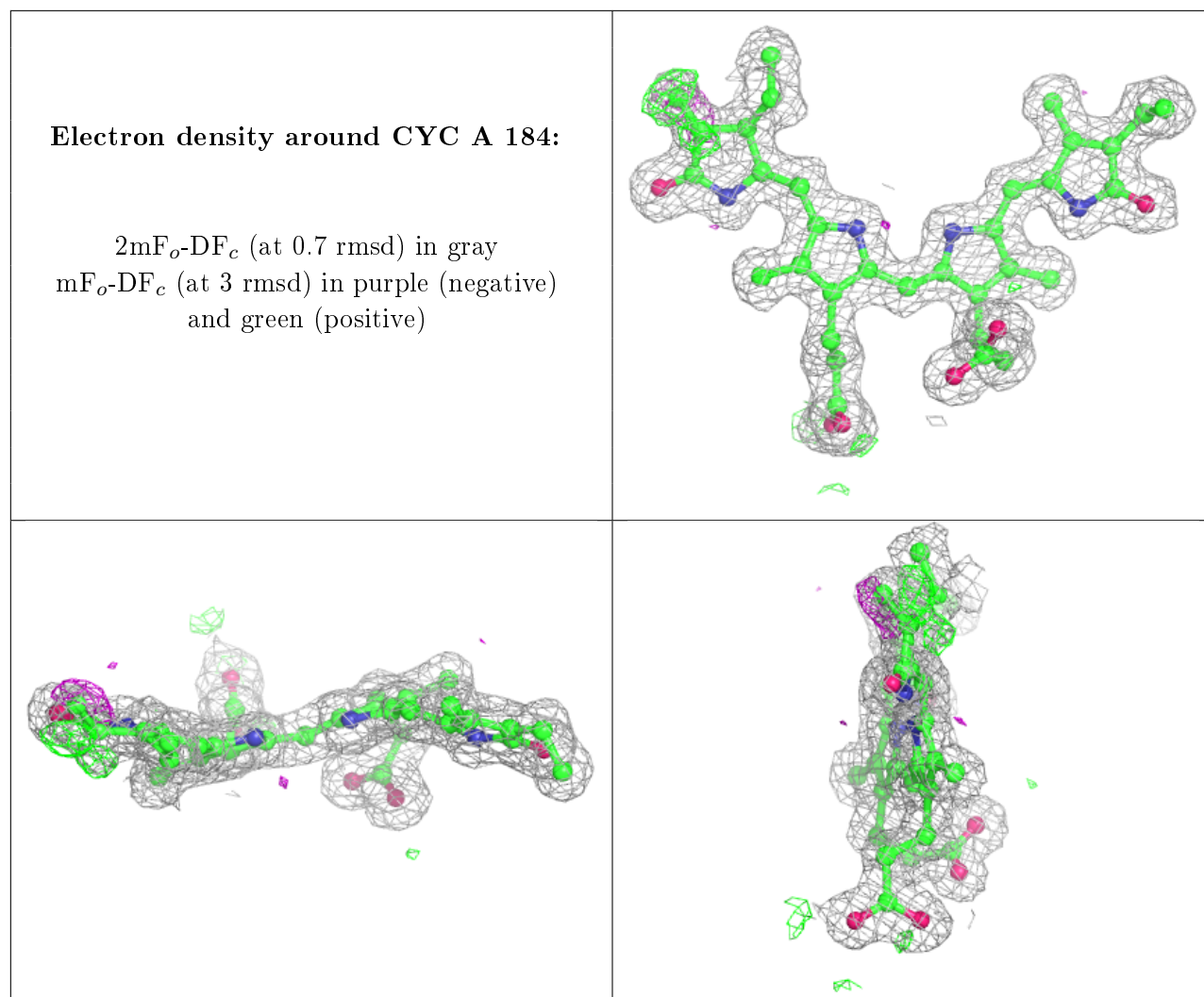
In the following table, the Atoms column lists the number of modelled atoms in the group and the number defined in the chemical component dictionary. The B-factors column lists the minimum, median, 95th percentile and maximum values of B factors of atoms in the group. The column labelled 'Q<0.9' lists the number of atoms with occupancy less than 0.9.

Mol	Type	Chain	Res	Atoms	RSCC	RSR	B-factors(\AA^2)	Q<0.9
4	PEB	B	182	43/43	0.91	0.11	3,22,32,34	0
3	CYC	B	183	43/43	0.95	0.07	4,8,13,15	0
3	CYC	A	184	43/43	0.97	0.06	2,3,5,6	0

The following is a graphical depiction of the model fit to experimental electron density of all instances of the Ligand of Interest. In addition, ligands with molecular weight > 250 and outliers as shown on the geometry validation Tables will also be included. Each fit is shown from different orientation to approximate a three-dimensional view.







6.5 Other polymers [i](#)

There are no such residues in this entry.