



# wwPDB X-ray Structure Validation Summary Report ⓘ

Oct 11, 2021 – 01:29 PM EDT

PDB ID : 2O9D  
Title : Crystal Structure of AqpZ mutant T183C.  
Authors : Savage, D.F.; Stroud, R.M.; Center for Structures of Membrane Proteins (CSMP)  
Deposited on : 2006-12-13  
Resolution : 2.30 Å (reported)

This is a wwPDB X-ray Structure Validation Summary Report for a publicly released PDB entry.

We welcome your comments at [validation@mail.wwpdb.org](mailto:validation@mail.wwpdb.org)

A user guide is available at

<https://www.wwpdb.org/validation/2017/XrayValidationReportHelp>

with specific help available everywhere you see the ⓘ symbol.

---

The following versions of software and data (see [references ⓘ](#)) were used in the production of this report:

MolProbity : 4.02b-467  
Mogul : 1.8.5 (274361), CSD as541be (2020)  
Xtriage (Phenix) : 1.13  
EDS : 2.23.2  
buster-report : 1.1.7 (2018)  
Percentile statistics : 20191225.v01 (using entries in the PDB archive December 25th 2019)  
Refmac : 5.8.0158  
CCP4 : 7.0.044 (Gargrove)  
Ideal geometry (proteins) : Engh & Huber (2001)  
Ideal geometry (DNA, RNA) : Parkinson et al. (1996)  
Validation Pipeline (wwPDB-VP) : 2.23.2

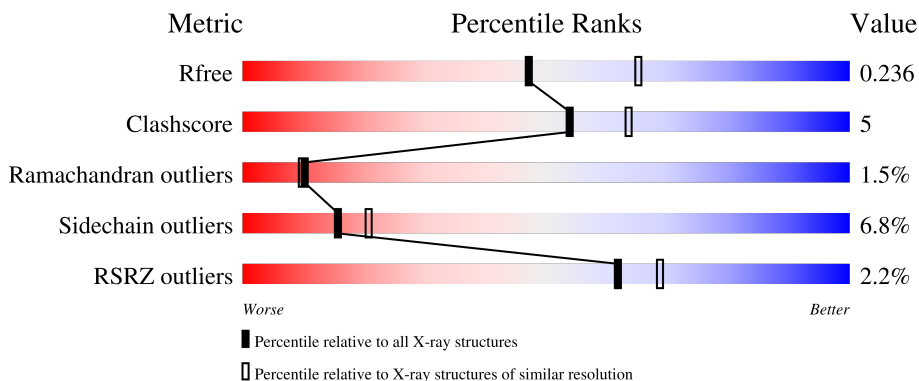
# 1 Overall quality at a glance

The following experimental techniques were used to determine the structure:

*X-RAY DIFFRACTION*


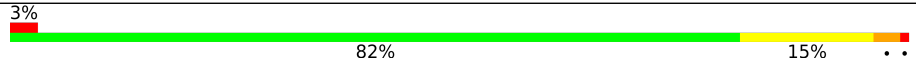
The reported resolution of this entry is 2.30 Å.

Percentile scores (ranging between 0-100) for global validation metrics of the entry are shown in the following graphic. The table shows the number of entries on which the scores are based.



Metric	Whole archive (#Entries)	Similar resolution (#Entries, resolution range(Å))
$R_{free}$	130704	5042 (2.30-2.30)
Clashscore	141614	5643 (2.30-2.30)
Ramachandran outliers	138981	5575 (2.30-2.30)
Sidechain outliers	138945	5575 (2.30-2.30)
RSRZ outliers	127900	4938 (2.30-2.30)

The table below summarises the geometric issues observed across the polymeric chains and their fit to the electron density. The red, orange, yellow and green segments of the lower bar indicate the fraction of residues that contain outliers for  $\geq 3$ , 2, 1 and 0 types of geometric quality criteria respectively. A grey segment represents the fraction of residues that are not modelled. The numeric value for each fraction is indicated below the corresponding segment, with a dot representing fractions  $\leq 5\%$ . The upper red bar (where present) indicates the fraction of residues that have poor fit to the electron density. The numeric value is given above the bar.

Mol	Chain	Length	Quality of chain
1	A	234	 85% 12% ..
1	B	234	 82% 15% ..

The following table lists non-polymeric compounds, carbohydrate monomers and non-standard residues in protein, DNA, RNA chains that are outliers for geometric or electron-density-fit criteria:

Mol	Type	Chain	Res	Chirality	Geometry	Clashes	Electron density
2	HSG	A	232	X	-	-	-
2	HSG	A	234	X	-	-	-
3	HSH	A	233	X	-	-	-

## 2 Entry composition [i](#)

There are 4 unique types of molecules in this entry. The entry contains 3512 atoms, of which 0 are hydrogens and 0 are deuteriums.

In the tables below, the ZeroOcc column contains the number of atoms modelled with zero occupancy, the AltConf column contains the number of residues with at least one atom in alternate conformation and the Trace column contains the number of residues modelled with at most 2 atoms.

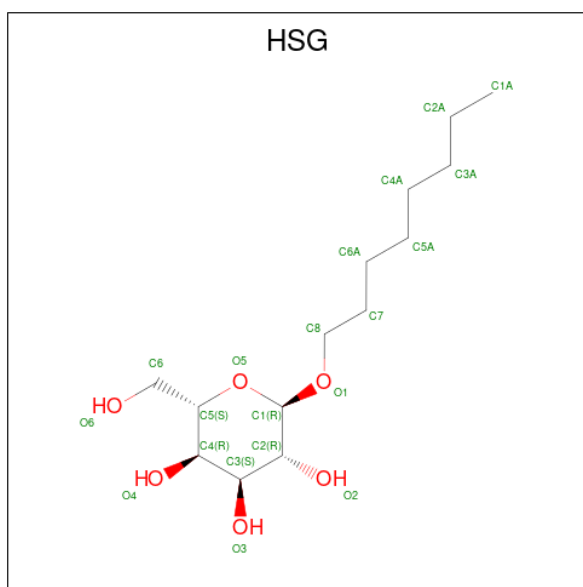
- Molecule 1 is a protein called Aquaporin Z.

Mol	Chain	Residues	Atoms					ZeroOcc	AltConf	Trace
			Total	C	N	O	S			
1	A	231	1668	1108	270	286	4	0	0	0
1	B	233	1688	1121	277	286	4	0	0	0

There are 12 discrepancies between the modelled and reference sequences:

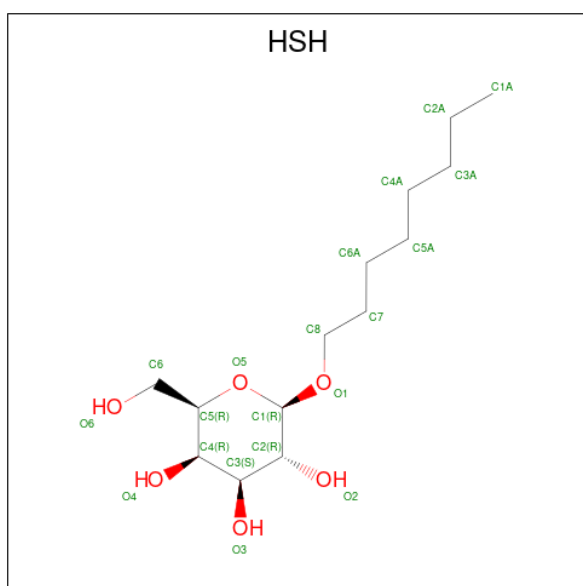
Chain	Residue	Modelled	Actual	Comment	Reference
A	-2	ALA	-	cloning artifact	UNP P60844
A	-1	SER	-	cloning artifact	UNP P60844
A	0	HIS	-	cloning artifact	UNP P60844
A	9	SER	CYS	engineered mutation	UNP P60844
A	20	SER	CYS	engineered mutation	UNP P60844
A	183	CYS	THR	engineered mutation	UNP P60844
B	-2	ALA	-	cloning artifact	UNP P60844
B	-1	SER	-	cloning artifact	UNP P60844
B	0	HIS	-	cloning artifact	UNP P60844
B	9	SER	CYS	engineered mutation	UNP P60844
B	20	SER	CYS	engineered mutation	UNP P60844
B	183	CYS	THR	engineered mutation	UNP P60844

- Molecule 2 is octyl alpha-L-altropyranoside (three-letter code: HSG) (formula: C<sub>14</sub>H<sub>28</sub>O<sub>6</sub>).



Mol	Chain	Residues	Atoms		ZeroOcc	AltConf
2	A	1	Total	C O	0	0
			20	14 6		
2	A	1	Total	C O	0	0
			20	14 6		

- Molecule 3 is octyl beta-D-galactopyranoside (three-letter code: HSH) (formula:  $C_{14}H_{28}O_6$ ).



Mol	Chain	Residues	Atoms		ZeroOcc	AltConf
3	A	1	Total	C O	0	0
			20	14 6		

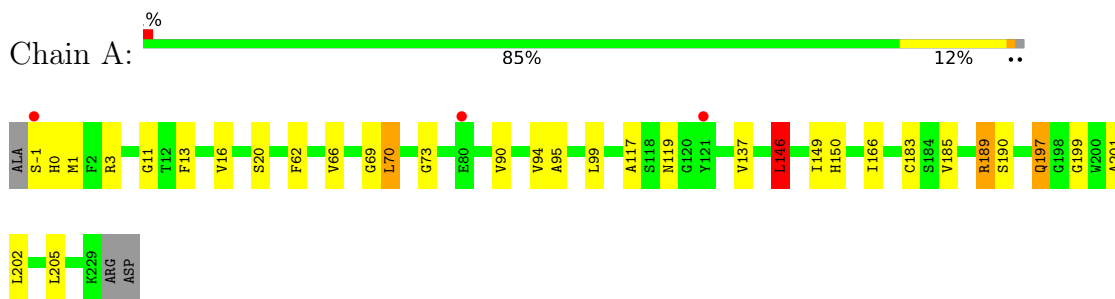
- Molecule 4 is water.

Mol	Chain	Residues	Atoms		ZeroOcc	AltConf
4	A	53	Total 53	O 53	0	0
4	B	43	Total 43	O 43	0	0

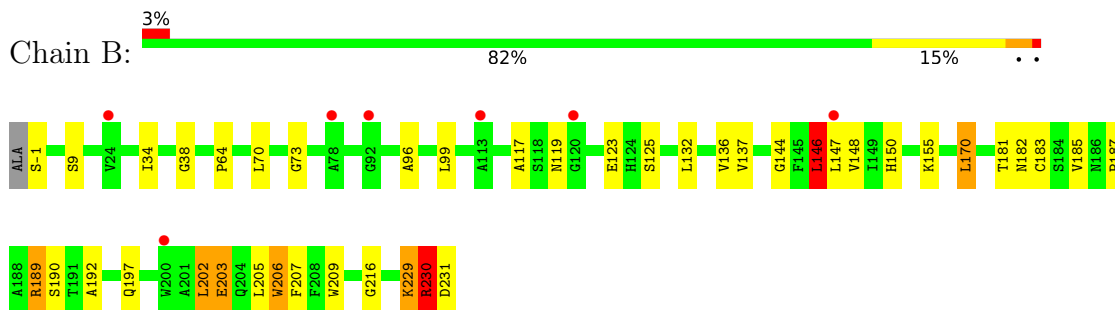
### 3 Residue-property plots [i](#)

These plots are drawn for all protein, RNA, DNA and oligosaccharide chains in the entry. The first graphic for a chain summarises the proportions of the various outlier classes displayed in the second graphic. The second graphic shows the sequence view annotated by issues in geometry and electron density. Residues are color-coded according to the number of geometric quality criteria for which they contain at least one outlier: green = 0, yellow = 1, orange = 2 and red = 3 or more. A red dot above a residue indicates a poor fit to the electron density ( $RSRZ > 2$ ). Stretches of 2 or more consecutive residues without any outlier are shown as a green connector. Residues present in the sample, but not in the model, are shown in grey.

- Molecule 1: Aquaporin Z



- Molecule 1: Aquaporin Z



## 4 Data and refinement statistics

Property	Value	Source
Space group	P 4	Depositor
Cell constants a, b, c, $\alpha$ , $\beta$ , $\gamma$	92.43Å 92.43Å 78.23Å 90.00° 90.00° 90.00°	Depositor
Resolution (Å)	92.45 – 2.30 92.43 – 2.30	Depositor EDS
% Data completeness (in resolution range)	98.2 (92.45-2.30) 98.2 (92.43-2.30)	Depositor EDS
$R_{merge}$	0.07	Depositor
$R_{sym}$	0.07	Depositor
$\langle I/\sigma(I) \rangle$ <sup>1</sup>	1.47 (at 2.29Å)	Xtrriage
Refinement program	REFMAC 5.2.0019	Depositor
R, $R_{free}$	0.197 , 0.238 0.197 , 0.236	Depositor DCC
$R_{free}$ test set	1472 reflections (5.10%)	wwPDB-VP
Wilson B-factor (Å <sup>2</sup> )	47.7	Xtrriage
Anisotropy	0.359	Xtrriage
Bulk solvent $k_{sol}$ (e/Å <sup>3</sup> ), $B_{sol}$ (Å <sup>2</sup> )	0.36 , 55.2	EDS
L-test for twinning <sup>2</sup>	$\langle  L  \rangle = 0.45$ , $\langle L^2 \rangle = 0.27$	Xtrriage
Estimated twinning fraction	0.076 for h,-k,-l	Xtrriage
$F_o, F_c$ correlation	0.95	EDS
Total number of atoms	3512	wwPDB-VP
Average B, all atoms (Å <sup>2</sup> )	37.0	wwPDB-VP

Xtrriage's analysis on translational NCS is as follows: *The largest off-origin peak in the Patterson function is 4.92% of the height of the origin peak. No significant pseudotranslation is detected.*

<sup>1</sup>Intensities estimated from amplitudes.

<sup>2</sup>Theoretical values of  $\langle |L| \rangle$ ,  $\langle L^2 \rangle$  for acentric reflections are 0.5, 0.333 respectively for untwinned datasets, and 0.375, 0.2 for perfectly twinned datasets.



## 5 Model quality [i](#)

### 5.1 Standard geometry [i](#)

Bond lengths and bond angles in the following residue types are not validated in this section: HSG, HSH

The Z score for a bond length (or angle) is the number of standard deviations the observed value is removed from the expected value. A bond length (or angle) with  $|Z| > 5$  is considered an outlier worth inspection. RMSZ is the root-mean-square of all Z scores of the bond lengths (or angles).

Mol	Chain	Bond lengths		Bond angles	
		RMSZ	$\# Z  > 5$	RMSZ	$\# Z  > 5$
1	A	0.64	0/1715	0.70	1/2341 (0.0%)
1	B	1.27	8/1735 (0.5%)	0.81	4/2365 (0.2%)
All	All	1.00	8/3450 (0.2%)	0.76	5/4706 (0.1%)

Chiral center outliers are detected by calculating the chiral volume of a chiral center and verifying if the center is modelled as a planar moiety or with the opposite hand. A planarity outlier is detected by checking planarity of atoms in a peptide group, atoms in a mainchain group or atoms of a sidechain that are expected to be planar.

Mol	Chain	#Chirality outliers	#Planarity outliers
1	B	0	1

The worst 5 of 8 bond length outliers are listed below:

Mol	Chain	Res	Type	Atoms	Z	Observed(Å)	Ideal(Å)
1	B	203	GLU	CD-OE1	35.18	1.64	1.25
1	B	203	GLU	CD-OE2	21.01	1.48	1.25
1	B	203	GLU	CG-CD	11.67	1.69	1.51
1	B	203	GLU	CB-CG	10.93	1.73	1.52
1	B	206	TRP	CD2-CE2	5.88	1.48	1.41

All (5) bond angle outliers are listed below:

Mol	Chain	Res	Type	Atoms	Z	Observed(°)	Ideal(°)
1	B	203	GLU	OE1-CD-OE2	-9.22	112.23	123.30
1	B	203	GLU	CG-CD-OE2	8.87	136.05	118.30
1	A	146	LEU	CA-CB-CG	-7.78	97.42	115.30
1	B	146	LEU	CA-CB-CG	-7.19	98.75	115.30
1	B	229	LYS	C-N-CA	5.09	134.43	121.70

There are no chirality outliers.

All (1) planarity outliers are listed below:

Mol	Chain	Res	Type	Group
1	B	202	LEU	Mainchain

## 5.2 Too-close contacts [i](#)

In the following table, the Non-H and H(model) columns list the number of non-hydrogen atoms and hydrogen atoms in the chain respectively. The H(added) column lists the number of hydrogen atoms added and optimized by MolProbity. The Clashes column lists the number of clashes within the asymmetric unit, whereas Symm-Clashes lists symmetry-related clashes.

Mol	Chain	Non-H	H(model)	H(added)	Clashes	Symm-Clashes
1	A	1668	0	1680	15	0
1	B	1688	0	1713	21	0
2	A	40	0	18	0	0
3	A	20	0	9	0	0
4	A	53	0	0	0	0
4	B	43	0	0	3	1
All	All	3512	0	3420	36	1

The all-atom clashscore is defined as the number of clashes found per 1000 atoms (including hydrogen atoms). The all-atom clashscore for this structure is 5.

The worst 5 of 36 close contacts within the same asymmetric unit are listed below, sorted by their clash magnitude.

Atom-1	Atom-2	Interatomic distance (Å)	Clash overlap (Å)
1:B:203:GLU:OE1	1:B:203:GLU:CD	1.64	1.34
1:A:117:ALA:O	1:A:189:ARG:NH2	2.08	0.86
1:B:-1:SER:HB2	4:B:253:HOH:O	1.78	0.82
1:B:117:ALA:O	1:B:189:ARG:NH2	2.12	0.81
1:B:-1:SER:CB	4:B:253:HOH:O	2.27	0.79

All (1) symmetry-related close contacts are listed below. The label for Atom-2 includes the symmetry operator and encoded unit-cell translations to be applied.

Atom-1	Atom-2	Interatomic distance (Å)	Clash overlap (Å)
4:B:240:HOH:O	4:B:264:HOH:O[3_555]	2.15	0.05

## 5.3 Torsion angles [i](#)

### 5.3.1 Protein backbone [i](#)

In the following table, the Percentiles column shows the percent Ramachandran outliers of the chain as a percentile score with respect to all X-ray entries followed by that with respect to entries of similar resolution.

The Analysed column shows the number of residues for which the backbone conformation was analysed, and the total number of residues.

Mol	Chain	Analysed	Favoured	Allowed	Outliers	Percentiles	
1	A	229/234 (98%)	218 (95%)	7 (3%)	4 (2%)	9	8
1	B	231/234 (99%)	220 (95%)	8 (4%)	3 (1%)	12	12
All	All	460/468 (98%)	438 (95%)	15 (3%)	7 (2%)	10	10

5 of 7 Ramachandran outliers are listed below:

Mol	Chain	Res	Type
1	B	230	ARG
1	A	183	CYS
1	A	185	VAL
1	B	185	VAL
1	A	1	MET

### 5.3.2 Protein sidechains [i](#)

In the following table, the Percentiles column shows the percent sidechain outliers of the chain as a percentile score with respect to all X-ray entries followed by that with respect to entries of similar resolution.

The Analysed column shows the number of residues for which the sidechain conformation was analysed, and the total number of residues.

Mol	Chain	Analysed	Rotameric	Outliers	Percentiles	
1	A	160/164 (98%)	152 (95%)	8 (5%)	24	34
1	B	162/164 (99%)	148 (91%)	14 (9%)	10	12
All	All	322/328 (98%)	300 (93%)	22 (7%)	16	21

5 of 22 residues with a non-rotameric sidechain are listed below:

Mol	Chain	Res	Type
1	B	146	LEU

*Continued on next page...*

*Continued from previous page...*

Mol	Chain	Res	Type
1	B	170	LEU
1	B	155	LYS
1	B	189	ARG
1	A	202	LEU

Sometimes sidechains can be flipped to improve hydrogen bonding and reduce clashes. 5 of 7 such sidechains are listed below:

Mol	Chain	Res	Type
1	A	197	GLN
1	B	119	ASN
1	B	197	GLN
1	B	150	HIS
1	A	150	HIS

### 5.3.3 RNA [i](#)

There are no RNA molecules in this entry.

## 5.4 Non-standard residues in protein, DNA, RNA chains [i](#)

There are no non-standard protein/DNA/RNA residues in this entry.

## 5.5 Carbohydrates [i](#)

There are no monosaccharides in this entry.

## 5.6 Ligand geometry [i](#)

3 ligands are modelled in this entry.

In the following table, the Counts columns list the number of bonds (or angles) for which Mogul statistics could be retrieved, the number of bonds (or angles) that are observed in the model and the number of bonds (or angles) that are defined in the Chemical Component Dictionary. The Link column lists molecule types, if any, to which the group is linked. The Z score for a bond length (or angle) is the number of standard deviations the observed value is removed from the expected value. A bond length (or angle) with  $|Z| > 2$  is considered an outlier worth inspection. RMSZ is the root-mean-square of all Z scores of the bond lengths (or angles).

Mol	Type	Chain	Res	Link	Bond lengths			Bond angles		
					Counts	RMSZ	# Z  > 2	Counts	RMSZ	# Z  > 2
2	HSG	A	234	-	20,20,20	0.75	1 (5%)	25,25,25	0.89	1 (4%)
3	HSH	A	233	-	20,20,20	0.85	1 (5%)	25,25,25	2.07	6 (24%)
2	HSG	A	232	-	20,20,20	0.83	1 (5%)	25,25,25	1.15	4 (16%)

In the following table, the Chirals column lists the number of chiral outliers, the number of chiral centers analysed, the number of these observed in the model and the number defined in the Chemical Component Dictionary. Similar counts are reported in the Torsion and Rings columns. '-' means no outliers of that kind were identified.

Mol	Type	Chain	Res	Link	Chirals	Torsions	Rings
2	HSG	A	234	-	1/1/5/5	6/11/31/31	0/1/1/1
3	HSH	A	233	-	2/2/5/5	8/11/31/31	0/1/1/1
2	HSG	A	232	-	1/1/5/5	8/11/31/31	0/1/1/1

All (3) bond length outliers are listed below:

Mol	Chain	Res	Type	Atoms	Z	Observed(Å)	Ideal(Å)
2	A	232	HSG	O1-C1	3.14	1.45	1.40
2	A	234	HSG	O1-C1	2.48	1.44	1.40
3	A	233	HSH	O1-C1	2.46	1.44	1.40

The worst 5 of 11 bond angle outliers are listed below:

Mol	Chain	Res	Type	Atoms	Z	Observed(°)	Ideal(°)
3	A	233	HSH	C3-C4-C5	-6.68	98.33	110.24
3	A	233	HSH	O5-C5-C6	4.20	116.87	106.44
3	A	233	HSH	O4-C4-C5	3.30	117.48	109.30
3	A	233	HSH	C1-C2-C3	3.00	116.24	110.00
3	A	233	HSH	O5-C5-C4	-2.86	104.51	109.69

All (4) chirality outliers are listed below:

Mol	Chain	Res	Type	Atom
2	A	232	HSG	C3
2	A	234	HSG	C3
3	A	233	HSH	C3
3	A	233	HSH	C5

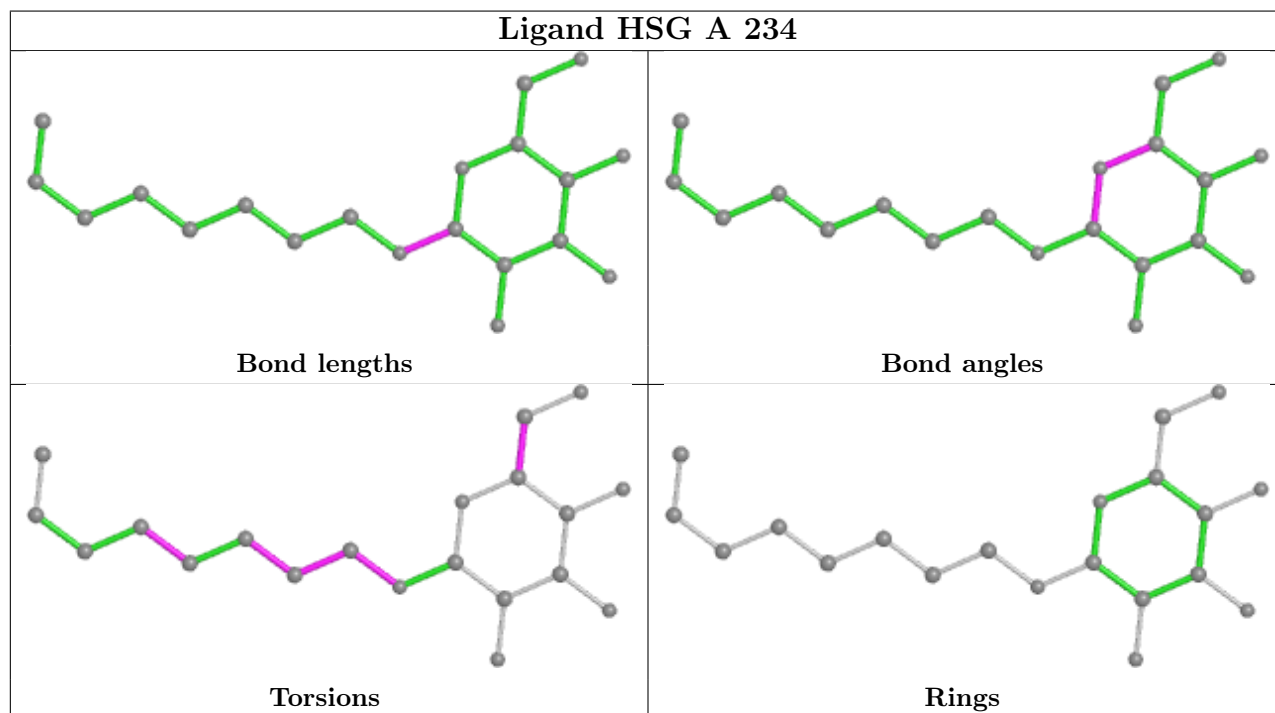
5 of 22 torsion outliers are listed below:

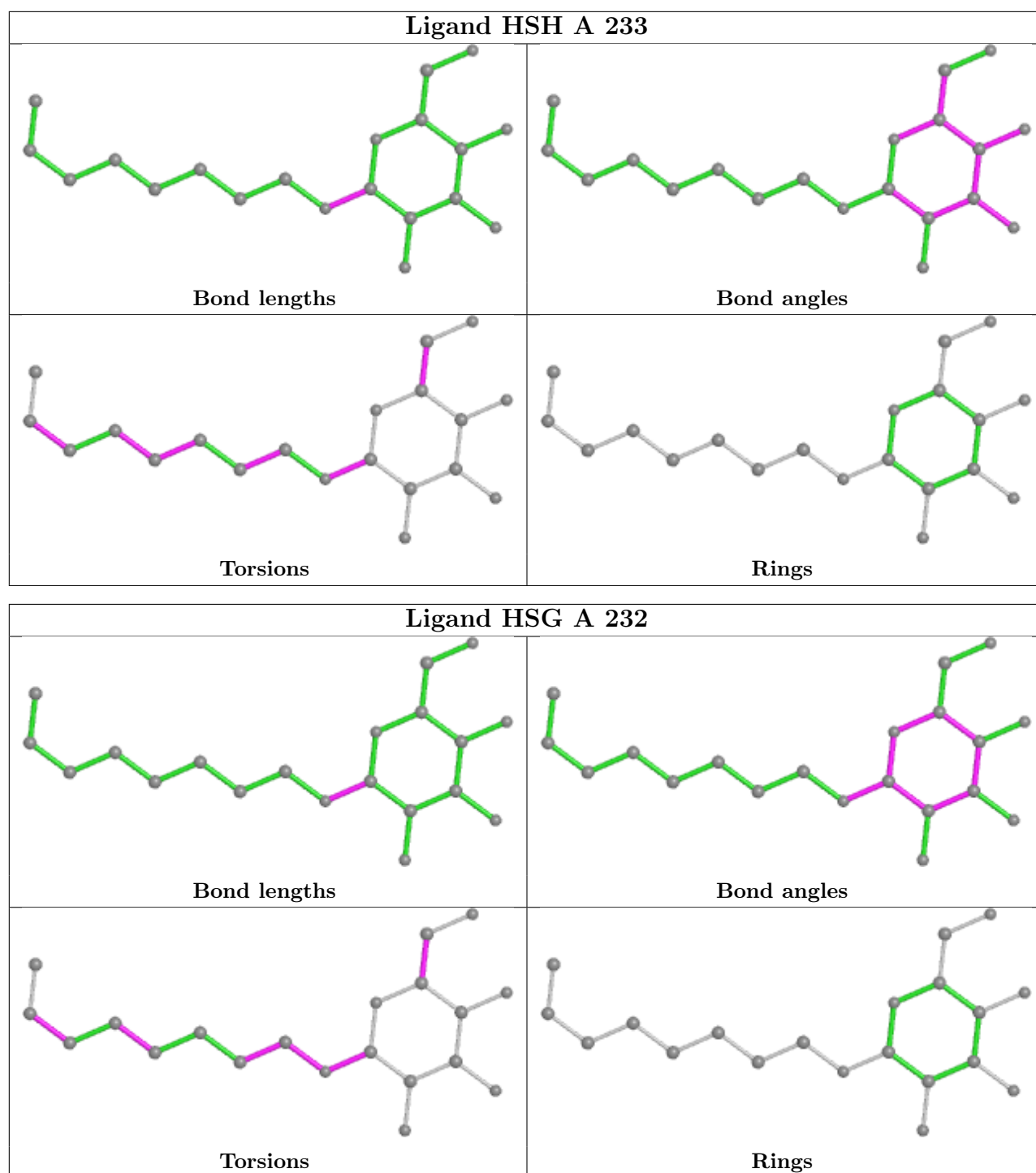
Mol	Chain	Res	Type	Atoms
2	A	232	HSG	C7-C8-O1-C1
2	A	232	HSG	O5-C1-O1-C8
2	A	232	HSG	C4-C5-C6-O6
2	A	234	HSG	O5-C5-C6-O6
2	A	232	HSG	O5-C5-C6-O6

There are no ring outliers.

No monomer is involved in short contacts.

The following is a two-dimensional graphical depiction of Mogul quality analysis of bond lengths, bond angles, torsion angles, and ring geometry for all instances of the Ligand of Interest. In addition, ligands with molecular weight > 250 and outliers as shown on the validation Tables will also be included. For torsion angles, if less than 5% of the Mogul distribution of torsion angles is within 10 degrees of the torsion angle in question, then that torsion angle is considered an outlier. Any bond that is central to one or more torsion angles identified as an outlier by Mogul will be highlighted in the graph. For rings, the root-mean-square deviation (RMSD) between the ring in question and similar rings identified by Mogul is calculated over all ring torsion angles. If the average RMSD is greater than 60 degrees and the minimal RMSD between the ring in question and any Mogul-identified rings is also greater than 60 degrees, then that ring is considered an outlier. The outliers are highlighted in purple. The color gray indicates Mogul did not find sufficient equivalents in the CSD to analyse the geometry.





## 5.7 Other polymers [i](#)

There are no such residues in this entry.

## 5.8 Polymer linkage issues [i](#)

There are no chain breaks in this entry.

## 6 Fit of model and data [i](#)

### 6.1 Protein, DNA and RNA chains [i](#)

In the following table, the column labelled ‘#RSRZ> 2’ contains the number (and percentage) of RSRZ outliers, followed by percent RSRZ outliers for the chain as percentile scores relative to all X-ray entries and entries of similar resolution. The OWAB column contains the minimum, median, 95<sup>th</sup> percentile and maximum values of the occupancy-weighted average B-factor per residue. The column labelled ‘Q< 0.9’ lists the number of (and percentage) of residues with an average occupancy less than 0.9.

Mol	Chain	Analysed	<RSRZ>	#RSRZ>2	OWAB(Å <sup>2</sup> )	Q<0.9
1	A	231/234 (98%)	0.19	3 (1%) 77 81	22, 35, 44, 52	0
1	B	233/234 (99%)	0.49	7 (3%) 50 57	22, 36, 44, 53	0
All	All	464/468 (99%)	0.34	10 (2%) 62 69	22, 36, 44, 53	0

The worst 5 of 10 RSRZ outliers are listed below:

Mol	Chain	Res	Type	RSRZ
1	B	200	TRP	3.5
1	A	-1	SER	2.9
1	B	78	ALA	2.4
1	B	113	ALA	2.4
1	A	80	GLU	2.4

### 6.2 Non-standard residues in protein, DNA, RNA chains [i](#)

There are no non-standard protein/DNA/RNA residues in this entry.

### 6.3 Carbohydrates [i](#)

There are no monosaccharides in this entry.

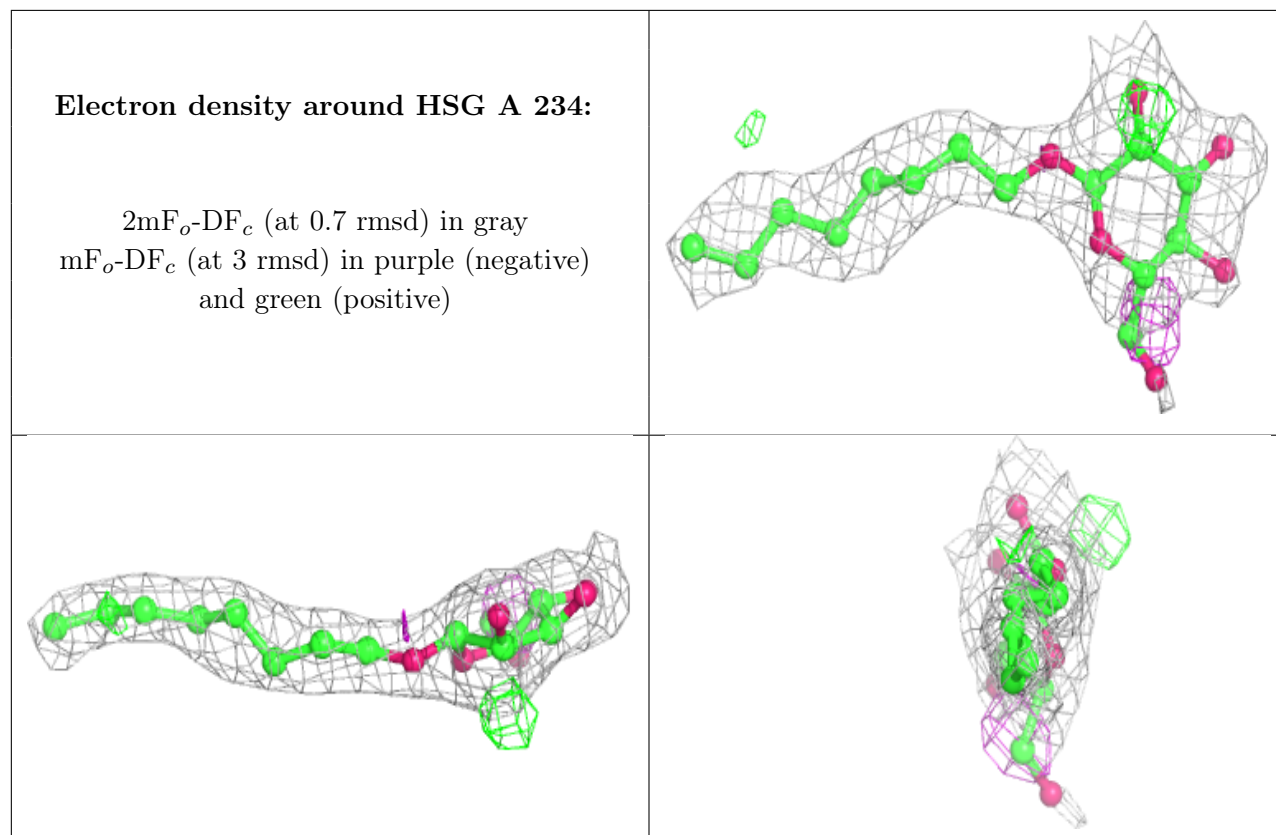
### 6.4 Ligands [i](#)

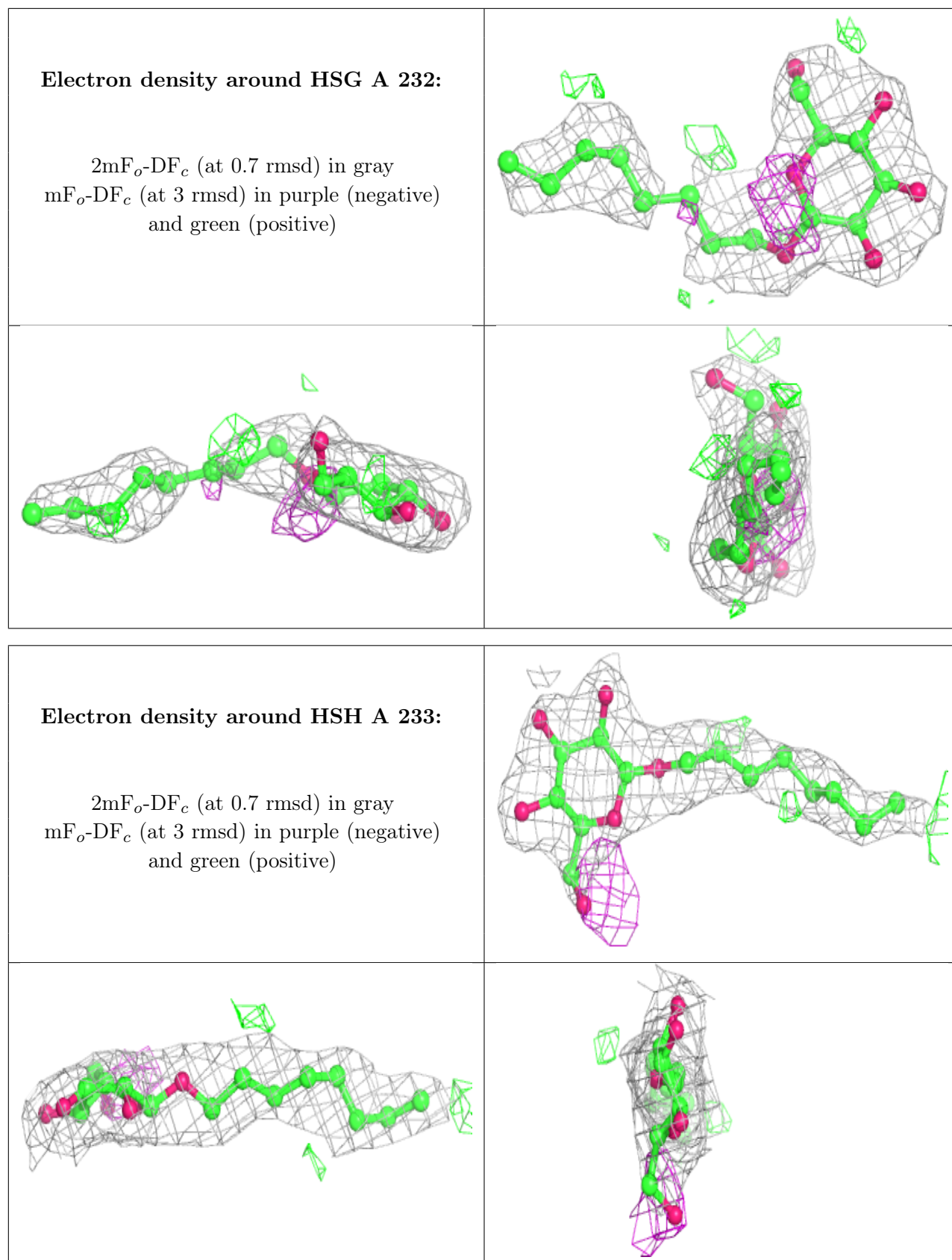
In the following table, the Atoms column lists the number of modelled atoms in the group and the number defined in the chemical component dictionary. The B-factors column lists the minimum, median, 95<sup>th</sup> percentile and maximum values of B factors of atoms in the group. The column labelled ‘Q< 0.9’ lists the number of atoms with occupancy less than 0.9.



Mol	Type	Chain	Res	Atoms	RSCC	RSR	B-factors( $\text{\AA}^2$ )	Q<0.9
2	HSG	A	234	20/20	0.85	0.22	70,72,75,76	0
2	HSG	A	232	20/20	0.87	0.17	63,65,74,74	0
3	HSH	A	233	20/20	0.87	0.19	64,67,69,69	0

The following is a graphical depiction of the model fit to experimental electron density of all instances of the Ligand of Interest. In addition, ligands with molecular weight > 250 and outliers as shown on the geometry validation Tables will also be included. Each fit is shown from different orientation to approximate a three-dimensional view.





## 6.5 Other polymers [i](#)

There are no such residues in this entry.