



Full wwPDB X-ray Structure Validation Report ⓘ

Feb 21, 2024 – 02:22 AM EST

PDB ID : 4NYI
Title : Approach for Targeting Ras with Small Molecules that Activate SOS-Mediated Nucleotide Exchange
Authors : Burns, M.C.; Sun, Q.; Phan, J.; Fesik, S.W.
Deposited on : 2013-12-10
Resolution : 2.96 Å(reported)

This is a Full wwPDB X-ray Structure Validation Report for a publicly released PDB entry.

We welcome your comments at validation@mail.wwpdb.org

A user guide is available at

<https://www.wwpdb.org/validation/2017/XrayValidationReportHelp>

with specific help available everywhere you see the ⓘ symbol.

The types of validation reports are described at

<http://www.wwpdb.org/validation/2017/FAQs#types>.

The following versions of software and data (see [references ⓘ](#)) were used in the production of this report:

MolProbity : 4.02b-467
Mogul : 1.8.5 (274361), CSD as541be (2020)
Xtriage (Phenix) : 1.13
EDS : 2.36
buster-report : 1.1.7 (2018)
Percentile statistics : 20191225.v01 (using entries in the PDB archive December 25th 2019)
Refmac : 5.8.0158
CCP4 : 7.0.044 (Gargrove)
Ideal geometry (proteins) : Engh & Huber (2001)
Ideal geometry (DNA, RNA) : Parkinson et al. (1996)
Validation Pipeline (wwPDB-VP) : 2.36

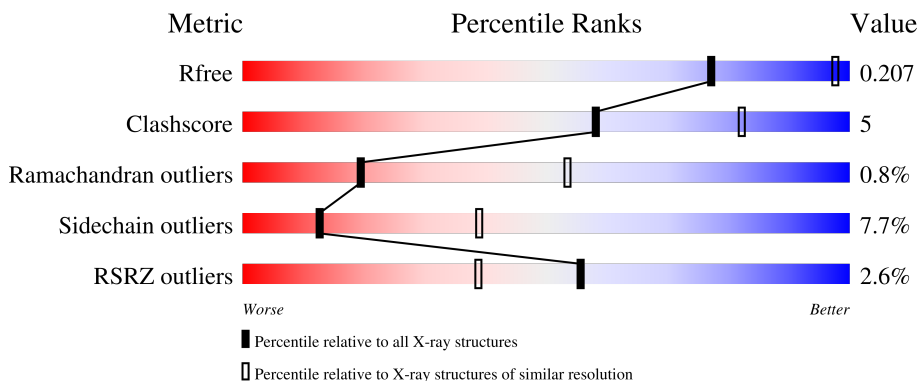
1 Overall quality at a glance

The following experimental techniques were used to determine the structure:

X-RAY DIFFRACTION

The reported resolution of this entry is 2.96 Å.

Percentile scores (ranging between 0-100) for global validation metrics of the entry are shown in the following graphic. The table shows the number of entries on which the scores are based.



Metric	Whole archive (#Entries)	Similar resolution (#Entries, resolution range(Å))
R_{free}	130704	3104 (3.00-2.92)
Clashscore	141614	3462 (3.00-2.92)
Ramachandran outliers	138981	3340 (3.00-2.92)
Sidechain outliers	138945	3343 (3.00-2.92)
RSRZ outliers	127900	2986 (3.00-2.92)

The table below summarises the geometric issues observed across the polymeric chains and their fit to the electron density. The red, orange, yellow and green segments of the lower bar indicate the fraction of residues that contain outliers for ≥ 3 , 2, 1 and 0 types of geometric quality criteria respectively. A grey segment represents the fraction of residues that are not modelled. The numeric value for each fraction is indicated below the corresponding segment, with a dot representing fractions $\leq 5\%$. The upper red bar (where present) indicates the fraction of residues that have poor fit to the electron density. The numeric value is given above the bar.

Mol	Chain	Length	Quality of chain
1	Q	167	 84% 16% .
2	R	167	 84% 14% .
3	S	481	 77% 19% ..

2 Entry composition [i](#)

There are 7 unique types of molecules in this entry. The entry contains 6803 atoms, of which 0 are hydrogens and 0 are deuteriums.

In the tables below, the ZeroOcc column contains the number of atoms modelled with zero occupancy, the AltConf column contains the number of residues with at least one atom in alternate conformation and the Trace column contains the number of residues modelled with at most 2 atoms.

- Molecule 1 is a protein called GTPase HRas.

Mol	Chain	Residues	Atoms					ZeroOcc	AltConf	Trace
			Total	C	N	O	S			
1	Q	167	1341	832	236	266	7	0	2	0

There are 2 discrepancies between the modelled and reference sequences:

Chain	Residue	Modelled	Actual	Comment	Reference
Q	0	GLY	-	expression tag	UNP P01112
Q	64	ALA	TYR	engineered mutation	UNP P01112

- Molecule 2 is a protein called GTPase HRas.

Mol	Chain	Residues	Atoms					ZeroOcc	AltConf	Trace
			Total	C	N	O	S			
2	R	167	1327	826	229	265	7	0	0	0

There is a discrepancy between the modelled and reference sequences:

Chain	Residue	Modelled	Actual	Comment	Reference
R	0	GLY	-	expression tag	UNP P01112

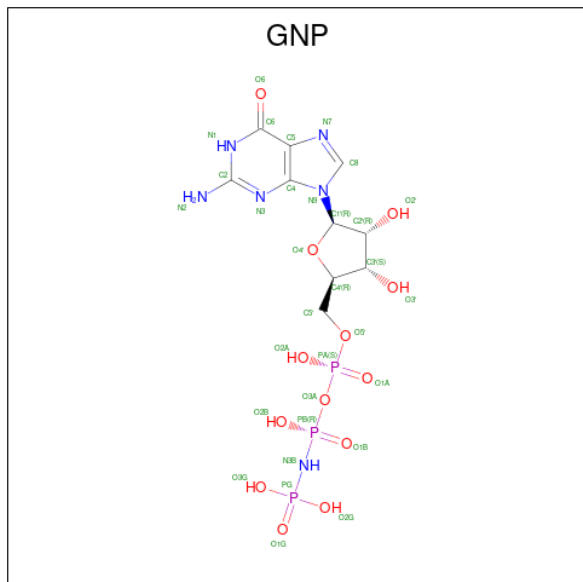
- Molecule 3 is a protein called Son of sevenless homolog 1.

Mol	Chain	Residues	Atoms					ZeroOcc	AltConf	Trace
			Total	C	N	O	S			
3	S	472	3926	2517	679	716	14	0	1	0

- Molecule 4 is MAGNESIUM ION (three-letter code: MG) (formula: Mg).

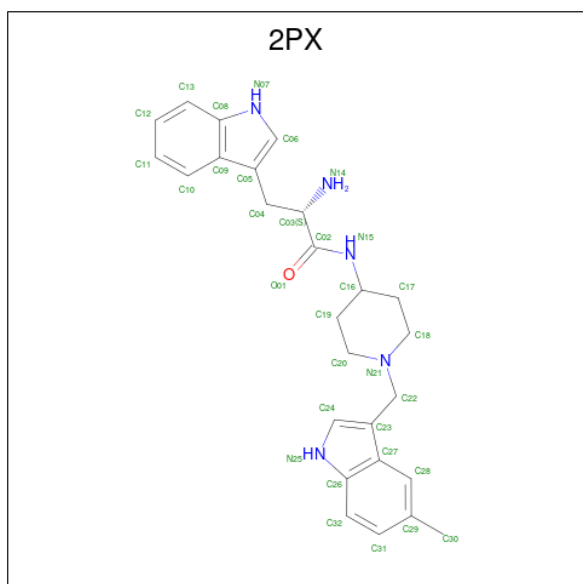
Mol	Chain	Residues	Atoms		ZeroOcc	AltConf
4	Q	1	Total	Mg	0	0
			1	1		

- Molecule 5 is PHOSPHOAMINOPHOSPHONIC ACID-GUANYLATE ESTER (three-letter code: GNP) (formula: C₁₀H₁₇N₆O₁₃P₃).



Mol	Chain	Residues	Atoms					ZeroOcc	AltConf
			Total	C	N	O	P		
5	Q	1	32	10	6	13	3	0	0

- Molecule 6 is N-{1-[(5-methyl-1H-indol-3-yl)methyl]piperidin-4-yl}-L-tryptophanamide (three-letter code: 2PX) (formula: C₂₆H₃₁N₅O).



Mol	Chain	Residues	Atoms				ZeroOcc	AltConf
			Total	C	N	O		
6	S	1	32	26	5	1	0	0

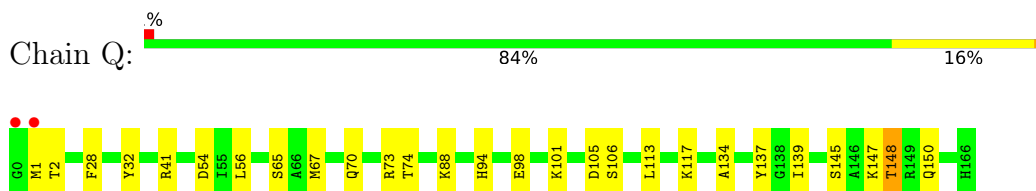
- Molecule 7 is water.

Mol	Chain	Residues	Atoms		ZeroOcc	AltConf
7	Q	24	Total 24	O 24	0	0
7	R	29	Total 29	O 29	0	0
7	S	91	Total 91	O 91	0	0

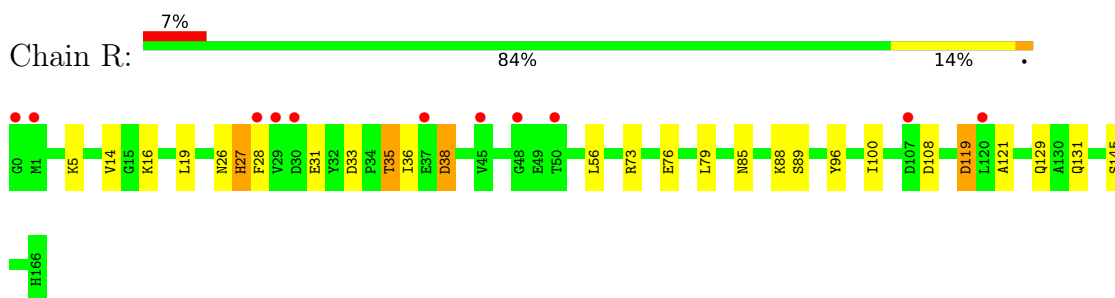
3 Residue-property plots [i](#)

These plots are drawn for all protein, RNA, DNA and oligosaccharide chains in the entry. The first graphic for a chain summarises the proportions of the various outlier classes displayed in the second graphic. The second graphic shows the sequence view annotated by issues in geometry and electron density. Residues are color-coded according to the number of geometric quality criteria for which they contain at least one outlier: green = 0, yellow = 1, orange = 2 and red = 3 or more. A red dot above a residue indicates a poor fit to the electron density ($RSRZ > 2$). Stretches of 2 or more consecutive residues without any outlier are shown as a green connector. Residues present in the sample, but not in the model, are shown in grey.

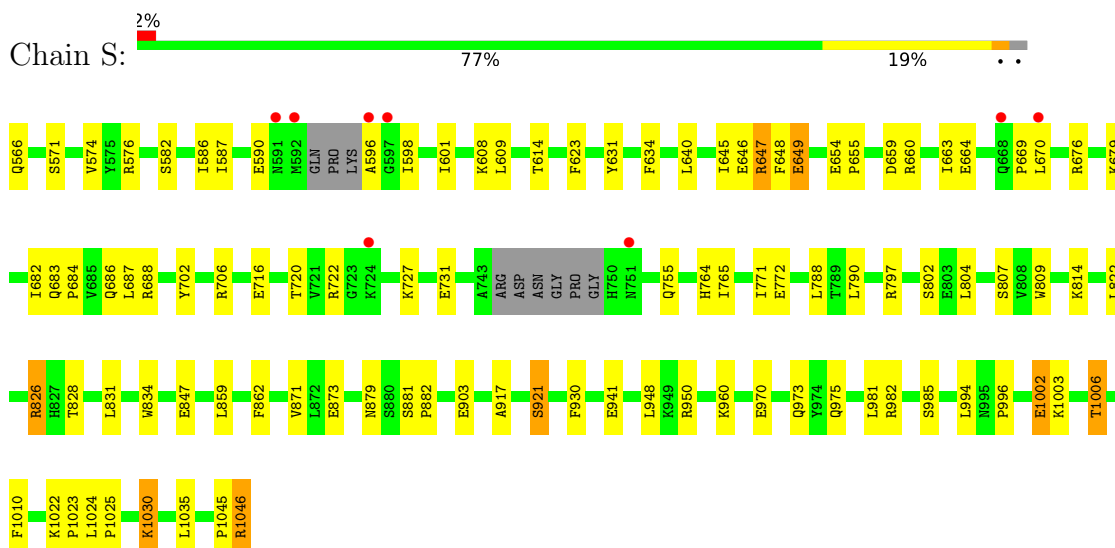
- Molecule 1: GTPase HRas



- Molecule 2: GTPase HRas



- Molecule 3: Son of sevenless homolog 1



4 Data and refinement statistics i

Property	Value	Source
Space group	I 4 2 2	Depositor
Cell constants a, b, c, α , β , γ	183.28Å 183.28Å 177.86Å 90.00° 90.00° 90.00°	Depositor
Resolution (Å)	35.95 – 2.96 35.95 – 2.96	Depositor EDS
% Data completeness (in resolution range)	99.9 (35.95-2.96) 95.7 (35.95-2.96)	Depositor EDS
R_{merge}	(Not available)	Depositor
R_{sym}	(Not available)	Depositor
$\langle I/\sigma(I) \rangle$ ¹	3.35 (at 2.95Å)	Xtrriage
Refinement program	PHENIX (phenix.refine: 1.8.2_1309)	Depositor
R, R_{free}	0.165 , 0.208 0.167 , 0.207	Depositor DCC
R_{free} test set	1582 reflections (4.99%)	wwPDB-VP
Wilson B-factor (Å ²)	47.2	Xtrriage
Anisotropy	0.466	Xtrriage
Bulk solvent k_{sol} (e/Å ³), B_{sol} (Å ²)	0.35 , 41.2	EDS
L-test for twinning ²	$\langle L \rangle = 0.49$, $\langle L^2 \rangle = 0.32$	Xtrriage
Estimated twinning fraction	0.008 for l,-k,h 0.015 for -h,-l,-k	Xtrriage
F_o, F_c correlation	0.95	EDS
Total number of atoms	6803	wwPDB-VP
Average B, all atoms (Å ²)	30.0	wwPDB-VP

Xtrriage's analysis on translational NCS is as follows: *The largest off-origin peak in the Patterson function is 3.18% of the height of the origin peak. No significant pseudotranslation is detected.*

¹Intensities estimated from amplitudes.

²Theoretical values of $\langle |L| \rangle$, $\langle L^2 \rangle$ for acentric reflections are 0.5, 0.333 respectively for untwinned datasets, and 0.375, 0.2 for perfectly twinned datasets.

5 Model quality [i](#)

5.1 Standard geometry [i](#)

Bond lengths and bond angles in the following residue types are not validated in this section: GNP, MG, 2PX

The Z score for a bond length (or angle) is the number of standard deviations the observed value is removed from the expected value. A bond length (or angle) with $|Z| > 5$ is considered an outlier worth inspection. RMSZ is the root-mean-square of all Z scores of the bond lengths (or angles).

Mol	Chain	Bond lengths		Bond angles	
		RMSZ	# Z >5	RMSZ	# Z >5
1	Q	0.39	0/1360	0.57	0/1833
2	R	0.40	0/1346	0.59	0/1815
3	S	0.42	0/4020	0.56	0/5436
All	All	0.41	0/6726	0.57	0/9084

There are no bond length outliers.

There are no bond angle outliers.

There are no chirality outliers.

There are no planarity outliers.

5.2 Too-close contacts [i](#)

In the following table, the Non-H and H(model) columns list the number of non-hydrogen atoms and hydrogen atoms in the chain respectively. The H(added) column lists the number of hydrogen atoms added and optimized by MolProbity. The Clashes column lists the number of clashes within the asymmetric unit, whereas Symm-Clashes lists symmetry-related clashes.

Mol	Chain	Non-H	H(model)	H(added)	Clashes	Symm-Clashes
1	Q	1341	0	1311	8	0
2	R	1327	0	1299	13	0
3	S	3926	0	3947	44	0
4	Q	1	0	0	0	0
5	Q	32	0	13	1	0
6	S	32	0	31	0	0
7	Q	24	0	0	0	0
7	R	29	0	0	2	0
7	S	91	0	0	0	0
All	All	6803	0	6601	64	0

The all-atom clashscore is defined as the number of clashes found per 1000 atoms (including hydrogen atoms). The all-atom clashscore for this structure is 5.

All (64) close contacts within the same asymmetric unit are listed below, sorted by their clash magnitude.

Atom-1	Atom-2	Interatomic distance (Å)	Clash overlap (Å)
2:R:73:ARG:NH1	3:S:879:ASN:O	2.17	0.78
1:Q:148:THR:HG22	1:Q:150:GLN:H	1.48	0.77
2:R:26:ASN:O	2:R:28:PHE:N	2.18	0.69
2:R:89:SER:O	7:R:205:HOH:O	2.11	0.69
3:S:587:ILE:HD11	3:S:950:ARG:HG3	1.75	0.68
2:R:85:ASN:HD22	2:R:121:ALA:HB3	1.62	0.65
3:S:659:ASP:O	3:S:663:ILE:HG13	2.05	0.57
3:S:576:ARG:HD3	3:S:646:GLU:OE2	2.06	0.56
3:S:797:ARG:HA	3:S:975:GLN:HG2	1.87	0.56
2:R:5:LYS:HB2	2:R:76:GLU:HG3	1.91	0.52
3:S:882:PRO:HB3	3:S:1010:PHE:HA	1.92	0.52
3:S:654:GLU:HG3	3:S:655:PRO:HD2	1.92	0.52
3:S:941:GLU:HA	3:S:960:LYS:HE3	1.92	0.52
3:S:1002:GLU:O	3:S:1006:THR:HB	2.09	0.52
3:S:834:TRP:HB2	3:S:996:PRO:HG3	1.93	0.51
2:R:96:TYR:O	2:R:100:ILE:HG13	2.11	0.51
2:R:33:ASP:OD1	2:R:35:THR:HB	2.10	0.51
3:S:596:ALA:HA	3:S:598:ILE:H	1.76	0.50
3:S:702:TYR:O	3:S:706:ARG:HG3	2.13	0.49
3:S:663:ILE:HG12	3:S:669:PRO:HG3	1.94	0.49
2:R:35:THR:HG22	2:R:36:ILE:HD13	1.95	0.49
3:S:571:SER:HB3	3:S:574:VAL:HG22	1.95	0.49
3:S:660:ARG:O	3:S:664:GLU:HG2	2.14	0.47
3:S:684:PRO:O	3:S:688:ARG:HG3	2.15	0.47
3:S:807:SER:HA	3:S:809:TRP:CZ3	2.50	0.47
3:S:859:LEU:HD11	3:S:871:VAL:HG13	1.97	0.47
3:S:764:HIS:CG	3:S:765:ILE:H	2.32	0.47
2:R:85:ASN:ND2	2:R:119:ASP:OD1	2.48	0.46
3:S:716:GLU:O	3:S:720:THR:HG23	2.15	0.46
3:S:586:ILE:HB	3:S:608:LYS:HG2	1.97	0.45
3:S:614:THR:OG1	3:S:647:ARG:HD3	2.16	0.45
3:S:788:LEU:HD13	3:S:831:LEU:HD21	1.96	0.45
3:S:648:PHE:CE1	3:S:686:GLN:HB3	2.52	0.45
3:S:847:GLU:HG2	3:S:1035:LEU:HD11	1.99	0.45
1:Q:101:LYS:HG2	1:Q:106:SER:O	2.17	0.45
3:S:847:GLU:OE1	3:S:1030:LYS:N	2.46	0.45
3:S:649:GLU:H	3:S:649:GLU:HG2	1.67	0.44

Continued on next page...

Continued from previous page...

Atom-1	Atom-2	Interatomic distance (Å)	Clash overlap (Å)
3:S:828:THR:HG23	3:S:873:GLU:HG3	1.99	0.44
1:Q:67:MET:HA	1:Q:70:GLN:NE2	2.32	0.44
3:S:822:LEU:O	3:S:826:ARG:HB2	2.18	0.44
1:Q:145:SER:OG	1:Q:148:THR:HB	2.17	0.43
1:Q:117:LYS:HG2	5:Q:202:GNP:C6	2.48	0.43
2:R:76:GLU:OE1	7:R:224:HOH:O	2.21	0.43
3:S:702:TYR:CZ	3:S:802:SER:HB3	2.53	0.43
1:Q:134:ALA:HB1	1:Q:139:ILE:O	2.19	0.43
3:S:790:LEU:HD21	3:S:981:LEU:HB2	1.99	0.43
2:R:38:ASP:OD1	2:R:38:ASP:N	2.52	0.43
3:S:645:ILE:O	3:S:649:GLU:HG2	2.19	0.42
2:R:26:ASN:C	2:R:28:PHE:H	2.16	0.42
3:S:917:ALA:O	3:S:921:SER:HB3	2.20	0.42
3:S:727:LYS:HE2	3:S:731:GLU:OE1	2.19	0.42
3:S:687:LEU:HD23	3:S:687:LEU:HA	1.92	0.42
3:S:566:GLN:O	3:S:676:ARG:NH2	2.53	0.42
2:R:19:LEU:HA	2:R:19:LEU:HD23	1.81	0.41
3:S:1046:ARG:CZ	3:S:1046:ARG:HB2	2.49	0.41
3:S:601:ILE:HD12	3:S:623:PHE:HE2	1.86	0.41
3:S:1024:LEU:HA	3:S:1025:PRO:HD2	1.88	0.41
3:S:764:HIS:CG	3:S:765:ILE:N	2.89	0.41
1:Q:137:TYR:HB2	1:Q:139:ILE:HG12	2.02	0.41
1:Q:28:PHE:CD1	1:Q:147:LYS:HA	2.56	0.40
3:S:631:TYR:HA	3:S:634:PHE:CE2	2.57	0.40
3:S:682:ILE:O	3:S:686:GLN:HG3	2.20	0.40
3:S:670:LEU:HD23	3:S:670:LEU:HA	1.81	0.40
3:S:1022:LYS:HA	3:S:1023:PRO:HD3	1.88	0.40

There are no symmetry-related clashes.

5.3 Torsion angles [i](#)

5.3.1 Protein backbone [i](#)

In the following table, the Percentiles column shows the percent Ramachandran outliers of the chain as a percentile score with respect to all X-ray entries followed by that with respect to entries of similar resolution.

The Analysed column shows the number of residues for which the backbone conformation was analysed, and the total number of residues.

Mol	Chain	Analysed	Favoured	Allowed	Outliers	Percentiles	
1	Q	167/167 (100%)	161 (96%)	5 (3%)	1 (1%)	25	60
2	R	165/167 (99%)	154 (93%)	7 (4%)	4 (2%)	6	26
3	S	467/481 (97%)	449 (96%)	17 (4%)	1 (0%)	47	79
All	All	799/815 (98%)	764 (96%)	29 (4%)	6 (1%)	19	53

All (6) Ramachandran outliers are listed below:

Mol	Chain	Res	Type
1	Q	1	MET
2	R	27	HIS
3	S	1045	PRO
2	R	16	LYS
2	R	31	GLU
2	R	14	VAL

5.3.2 Protein sidechains [i](#)

In the following table, the Percentiles column shows the percent sidechain outliers of the chain as a percentile score with respect to all X-ray entries followed by that with respect to entries of similar resolution.

The Analysed column shows the number of residues for which the sidechain conformation was analysed, and the total number of residues.

Mol	Chain	Analysed	Rotameric	Outliers	Percentiles	
1	Q	145/143 (101%)	130 (90%)	15 (10%)	7	25
2	R	144/144 (100%)	133 (92%)	11 (8%)	13	39
3	S	441/447 (99%)	410 (93%)	31 (7%)	15	43
All	All	730/734 (100%)	673 (92%)	57 (8%)	13	38

All (57) residues with a non-rotameric sidechain are listed below:

Mol	Chain	Res	Type
1	Q	2	THR
1	Q	32	TYR
1	Q	41	ARG
1	Q	54	ASP
1	Q	56	LEU
1	Q	65	SER
1	Q	73	ARG

Continued on next page...

Continued from previous page...

Mol	Chain	Res	Type
1	Q	74	THR
1	Q	88	LYS
1	Q	94[A]	HIS
1	Q	94[B]	HIS
1	Q	98	GLU
1	Q	105	ASP
1	Q	113	LEU
1	Q	148	THR
2	R	27	HIS
2	R	35	THR
2	R	38	ASP
2	R	56	LEU
2	R	79	LEU
2	R	88	LYS
2	R	108	ASP
2	R	119	ASP
2	R	129	GLN
2	R	131	GLN
2	R	145	SER
3	S	582	SER
3	S	590	GLU
3	S	609	LEU
3	S	640	LEU
3	S	647	ARG
3	S	649	GLU
3	S	679	LYS
3	S	683	GLN
3	S	722	ARG
3	S	755	GLN
3	S	771	ILE
3	S	772	GLU
3	S	804	LEU
3	S	814	LYS
3	S	826	ARG
3	S	862	PHE
3	S	881	SER
3	S	903	GLU
3	S	921	SER
3	S	930	PHE
3	S	948	LEU
3	S	970	GLU
3	S	973	GLN

Continued on next page...

Continued from previous page...

Mol	Chain	Res	Type
3	S	982	ARG
3	S	985	SER
3	S	994	LEU
3	S	1002	GLU
3	S	1003	LYS
3	S	1006	THR
3	S	1030	LYS
3	S	1046	ARG

Sometimes sidechains can be flipped to improve hydrogen bonding and reduce clashes. There are no such sidechains identified.

5.3.3 RNA [i](#)

There are no RNA molecules in this entry.

5.4 Non-standard residues in protein, DNA, RNA chains [i](#)

There are no non-standard protein/DNA/RNA residues in this entry.

5.5 Carbohydrates [i](#)

There are no monosaccharides in this entry.

5.6 Ligand geometry [i](#)

Of 3 ligands modelled in this entry, 1 is monoatomic - leaving 2 for Mogul analysis.

In the following table, the Counts columns list the number of bonds (or angles) for which Mogul statistics could be retrieved, the number of bonds (or angles) that are observed in the model and the number of bonds (or angles) that are defined in the Chemical Component Dictionary. The Link column lists molecule types, if any, to which the group is linked. The Z score for a bond length (or angle) is the number of standard deviations the observed value is removed from the expected value. A bond length (or angle) with $|Z| > 2$ is considered an outlier worth inspection. RMSZ is the root-mean-square of all Z scores of the bond lengths (or angles).

Mol	Type	Chain	Res	Link	Bond lengths			Bond angles		
					Counts	RMSZ	# Z > 2	Counts	RMSZ	# Z > 2
6	2PX	S	1101	-	34,36,36	1.32	2 (5%)	40,51,51	1.76	7 (17%)
5	GNP	Q	202	4	29,34,34	1.64	5 (17%)	33,54,54	2.21	8 (24%)

In the following table, the Chirals column lists the number of chiral outliers, the number of chiral centers analysed, the number of these observed in the model and the number defined in the Chemical Component Dictionary. Similar counts are reported in the Torsion and Rings columns. '-' means no outliers of that kind were identified.

Mol	Type	Chain	Res	Link	Chirals	Torsions	Rings
6	2PX	S	1101	-	-	3/14/26/26	0/5/5/5
5	GNP	Q	202	4	-	4/14/38/38	0/3/3/3

All (7) bond length outliers are listed below:

Mol	Chain	Res	Type	Atoms	Z	Observed(Å)	Ideal(Å)
6	S	1101	2PX	C02-N15	5.62	1.46	1.34
5	Q	202	GNP	C6-N1	3.93	1.39	1.33
5	Q	202	GNP	PB-O3A	-3.88	1.54	1.59
5	Q	202	GNP	PG-O1G	3.75	1.52	1.46
5	Q	202	GNP	PB-O2B	-3.16	1.48	1.56
5	Q	202	GNP	C8-N7	-2.04	1.31	1.34
6	S	1101	2PX	C17-C16	-2.03	1.47	1.52

All (15) bond angle outliers are listed below:

Mol	Chain	Res	Type	Atoms	Z	Observed(°)	Ideal(°)
5	Q	202	GNP	C5-C6-N1	-8.17	112.25	123.43
6	S	1101	2PX	C22-N21-C20	5.81	123.99	111.06
5	Q	202	GNP	C2-N1-C6	5.48	124.64	115.93
6	S	1101	2PX	C20-N21-C18	4.21	118.32	108.83
5	Q	202	GNP	O1G-PG-N3B	-3.76	106.23	111.77
6	S	1101	2PX	C31-C32-C26	-3.36	116.61	120.84
6	S	1101	2PX	C12-C13-C08	-3.34	115.28	120.08
5	Q	202	GNP	O2B-PB-O1B	2.89	115.99	109.92
6	S	1101	2PX	C11-C10-C09	-2.88	116.90	120.89
5	Q	202	GNP	C2-N3-C4	-2.61	112.38	115.36
5	Q	202	GNP	N3-C2-N1	-2.57	123.79	127.22
6	S	1101	2PX	C19-C16-N15	-2.26	105.88	110.56
5	Q	202	GNP	O1B-PB-N3B	-2.23	108.48	111.77
5	Q	202	GNP	PB-O3A-PA	-2.05	125.40	132.62
6	S	1101	2PX	C19-C20-N21	2.01	114.23	111.11

There are no chirality outliers.

All (7) torsion outliers are listed below:

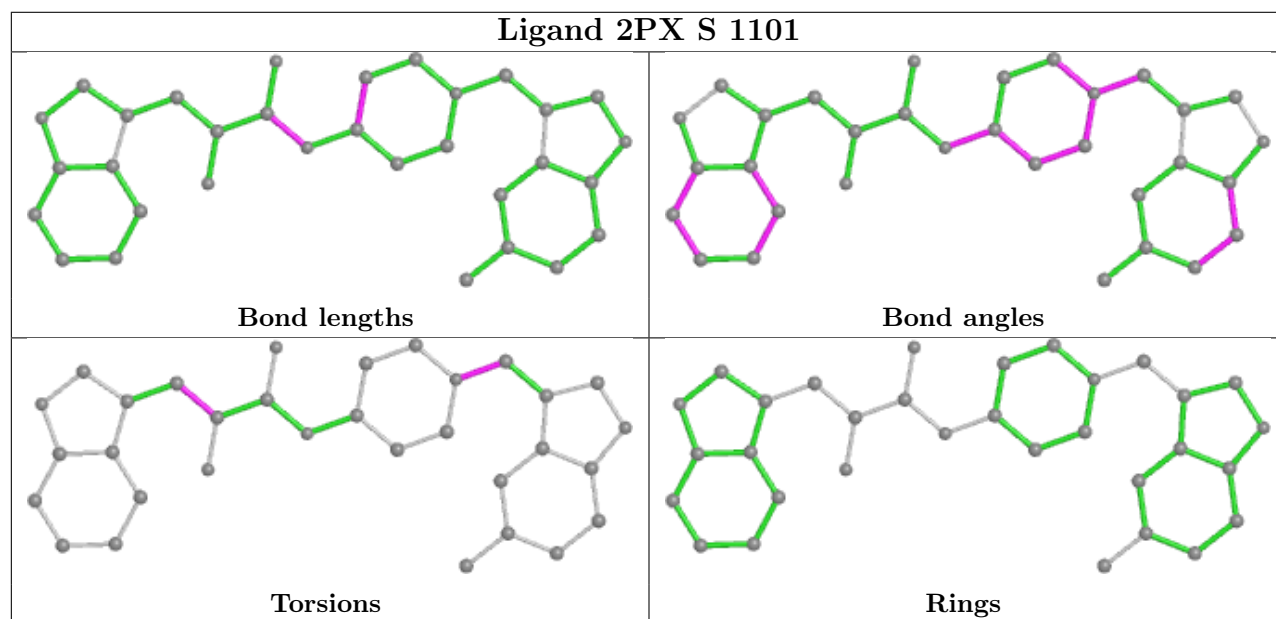
Mol	Chain	Res	Type	Atoms
5	Q	202	GNP	PB-N3B-PG-O1G
5	Q	202	GNP	PG-N3B-PB-O1B
6	S	1101	2PX	C02-C03-C04-C05
6	S	1101	2PX	N14-C03-C04-C05
6	S	1101	2PX	C23-C22-N21-C20
5	Q	202	GNP	PA-O3A-PB-O2B
5	Q	202	GNP	PG-N3B-PB-O3A

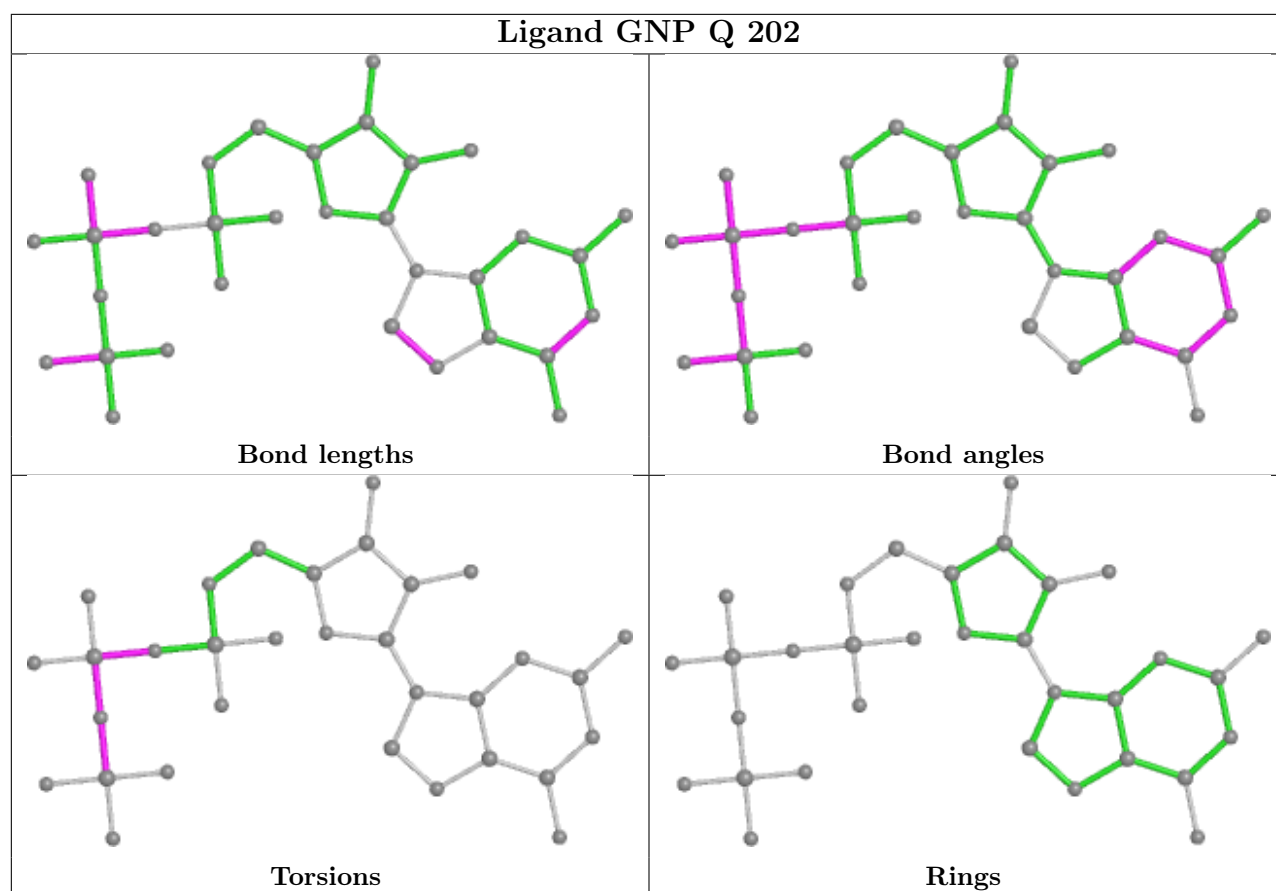
There are no ring outliers.

1 monomer is involved in 1 short contact:

Mol	Chain	Res	Type	Clashes	Symm-Clashes
5	Q	202	GNP	1	0

The following is a two-dimensional graphical depiction of Mogul quality analysis of bond lengths, bond angles, torsion angles, and ring geometry for all instances of the Ligand of Interest. In addition, ligands with molecular weight > 250 and outliers as shown on the validation Tables will also be included. For torsion angles, if less than 5% of the Mogul distribution of torsion angles is within 10 degrees of the torsion angle in question, then that torsion angle is considered an outlier. Any bond that is central to one or more torsion angles identified as an outlier by Mogul will be highlighted in the graph. For rings, the root-mean-square deviation (RMSD) between the ring in question and similar rings identified by Mogul is calculated over all ring torsion angles. If the average RMSD is greater than 60 degrees and the minimal RMSD between the ring in question and any Mogul-identified rings is also greater than 60 degrees, then that ring is considered an outlier. The outliers are highlighted in purple. The color gray indicates Mogul did not find sufficient equivalents in the CSD to analyse the geometry.





5.7 Other polymers [i](#)

There are no such residues in this entry.

5.8 Polymer linkage issues [i](#)

There are no chain breaks in this entry.

6 Fit of model and data

6.1 Protein, DNA and RNA chains

In the following table, the column labelled ‘#RSRZ > 2’ contains the number (and percentage) of RSRZ outliers, followed by percent RSRZ outliers for the chain as percentile scores relative to all X-ray entries and entries of similar resolution. The OWAB column contains the minimum, median, 95th percentile and maximum values of the occupancy-weighted average B-factor per residue. The column labelled ‘Q < 0.9’ lists the number of (and percentage) of residues with an average occupancy less than 0.9.

Mol	Chain	Analysed	<RSRZ>	#RSRZ>2	OWAB(Å ²)	Q<0.9
1	Q	167/167 (100%)	-0.21	2 (1%) 79 63	14, 27, 59, 74	0
2	R	167/167 (100%)	-0.00	11 (6%) 18 10	14, 30, 68, 108	0
3	S	472/481 (98%)	-0.28	8 (1%) 70 53	12, 24, 57, 94	0
All	All	806/815 (98%)	-0.21	21 (2%) 56 39	12, 26, 60, 108	0

All (21) RSRZ outliers are listed below:

Mol	Chain	Res	Type	RSRZ
3	S	596	ALA	5.6
3	S	592	MET	4.4
3	S	591	ASN	4.2
1	Q	0	GLY	4.1
2	R	29	VAL	3.9
3	S	751	ASN	3.5
3	S	670	LEU	3.4
2	R	0	GLY	3.3
2	R	28	PHE	3.1
2	R	37	GLU	3.1
2	R	107	ASP	2.8
2	R	30	ASP	2.7
2	R	1	MET	2.7
2	R	120	LEU	2.6
3	S	668	GLN	2.5
1	Q	1	MET	2.4
3	S	597	GLY	2.4
2	R	50	THR	2.3
3	S	724	LYS	2.3
2	R	48	GLY	2.2
2	R	45	VAL	2.2

6.2 Non-standard residues in protein, DNA, RNA chains [i](#)

There are no non-standard protein/DNA/RNA residues in this entry.

6.3 Carbohydrates [i](#)

There are no monosaccharides in this entry.

6.4 Ligands [i](#)

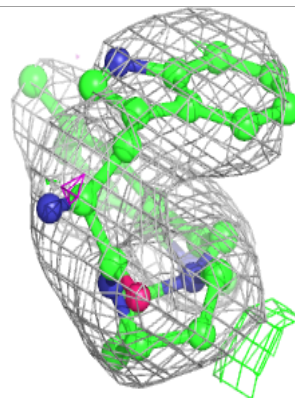
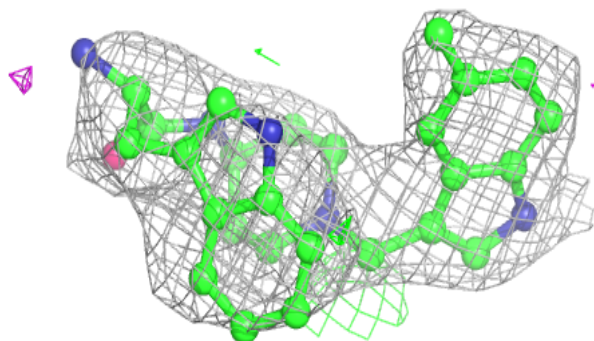
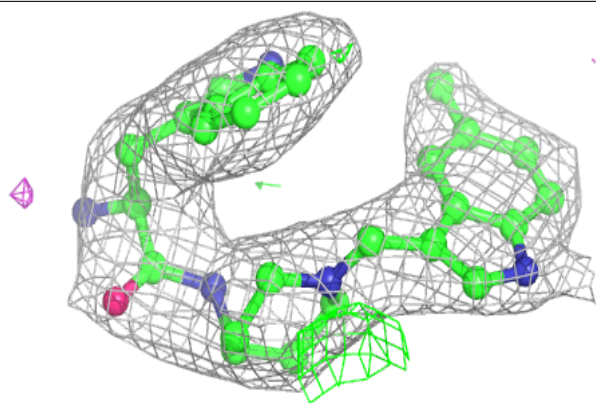
In the following table, the Atoms column lists the number of modelled atoms in the group and the number defined in the chemical component dictionary. The B-factors column lists the minimum, median, 95th percentile and maximum values of B factors of atoms in the group. The column labelled 'Q< 0.9' lists the number of atoms with occupancy less than 0.9.

Mol	Type	Chain	Res	Atoms	RSCC	RSR	B-factors(\AA^2)	Q<0.9
6	2PX	S	1101	32/32	0.95	0.24	19,32,55,61	0
5	GNP	Q	202	32/32	0.97	0.15	14,22,28,30	0
4	MG	Q	201	1/1	0.97	0.15	16,16,16,16	0

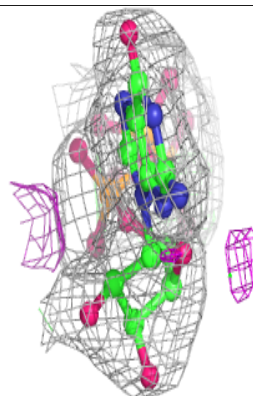
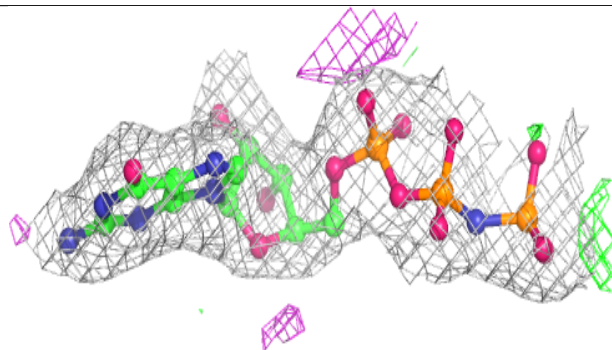
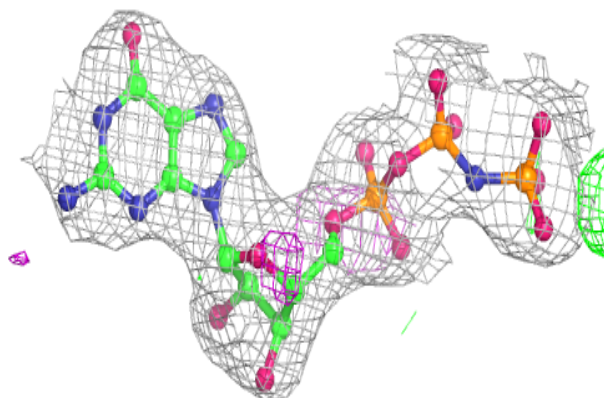
The following is a graphical depiction of the model fit to experimental electron density of all instances of the Ligand of Interest. In addition, ligands with molecular weight > 250 and outliers as shown on the geometry validation Tables will also be included. Each fit is shown from different orientation to approximate a three-dimensional view.

Electron density around 2PX S 1101:

$2mF_o-DF_c$ (at 0.7 rmsd) in gray
 mF_o-DF_c (at 3 rmsd) in purple (negative)
and green (positive)

**Electron density around GNP Q 202:**

$2mF_o-DF_c$ (at 0.7 rmsd) in gray
 mF_o-DF_c (at 3 rmsd) in purple (negative)
and green (positive)



6.5 Other polymers [i](#)

There are no such residues in this entry.