



Full wwPDB X-ray Structure Validation Report ⓘ

May 27, 2020 – 12:32 am BST

PDB ID : 5MGH
Title : Crystal structure of pathogenic mutants of human mitochondrial PheRS
Authors : Kartvelishvili, E.; Tworowski, D.; Vernon, H.; Chrzanowska-Lightowers, Z.; Moor, N.; Wang, J.; Wong, L.-J.; Safro, M.
Deposited on : 2016-11-21
Resolution : 1.87 Å(reported)

This is a Full wwPDB X-ray Structure Validation Report for a publicly released PDB entry.

We welcome your comments at validation@mail.wwpdb.org

A user guide is available at

<https://www.wwpdb.org/validation/2017/XrayValidationReportHelp>

with specific help available everywhere you see the ⓘ symbol.

The following versions of software and data (see [references ⓘ](#)) were used in the production of this report:

MolProbity : 4.02b-467
Xtriage (Phenix) : 1.13
EDS : 2.11
Percentile statistics : 20191225.v01 (using entries in the PDB archive December 25th 2019)
Refmac : 5.8.0158
CCP4 : 7.0.044 (Gargrove)
Ideal geometry (proteins) : Engh & Huber (2001)
Ideal geometry (DNA, RNA) : Parkinson et al. (1996)
Validation Pipeline (wwPDB-VP) : 2.11

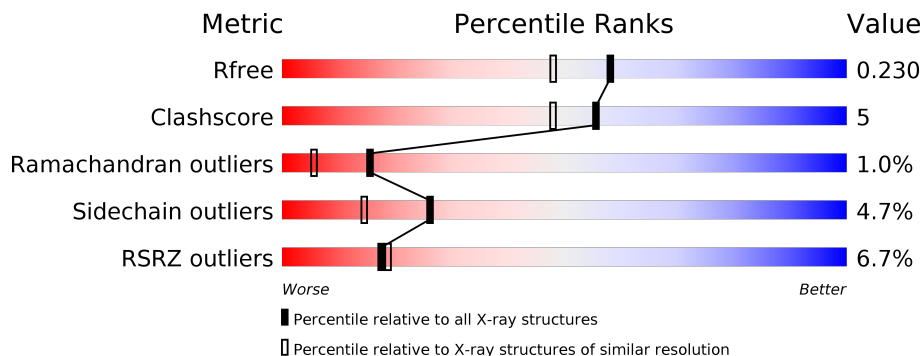
1 Overall quality at a glance

The following experimental techniques were used to determine the structure:

X-RAY DIFFRACTION

The reported resolution of this entry is 1.87 Å.

Percentile scores (ranging between 0-100) for global validation metrics of the entry are shown in the following graphic. The table shows the number of entries on which the scores are based.



Metric	Whole archive (#Entries)	Similar resolution (#Entries, resolution range(Å))
R_{free}	130704	9470 (1.90-1.86)
Clashscore	141614	10282 (1.90-1.86)
Ramachandran outliers	138981	10152 (1.90-1.86)
Sidechain outliers	138945	10152 (1.90-1.86)
RSRZ outliers	127900	9303 (1.90-1.86)

The table below summarises the geometric issues observed across the polymeric chains and their fit to the electron density. The red, orange, yellow and green segments on the lower bar indicate the fraction of residues that contain outliers for ≥ 3 , 2, 1 and 0 types of geometric quality criteria respectively. A grey segment represents the fraction of residues that are not modelled. The numeric value for each fraction is indicated below the corresponding segment, with a dot representing fractions $\leq 5\%$. The upper red bar (where present) indicates the fraction of residues that have poor fit to the electron density. The numeric value is given above the bar.

Mol	Chain	Length	Quality of chain
1	A	405	

2 Entry composition [i](#)

There are 3 unique types of molecules in this entry. The entry contains 3622 atoms, of which 0 are hydrogens and 0 are deuteriums.

In the tables below, the ZeroOcc column contains the number of atoms modelled with zero occupancy, the AltConf column contains the number of residues with at least one atom in alternate conformation and the Trace column contains the number of residues modelled with at most 2 atoms.

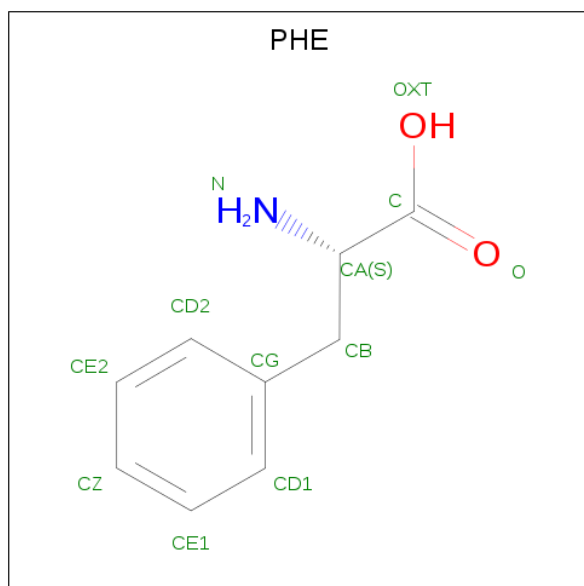
- Molecule 1 is a protein called Phenylalanine-tRNA ligase, mitochondrial.

Mol	Chain	Residues	Atoms					ZeroOcc	AltConf	Trace
			Total	C	N	O	S			
1	A	405	3351	2146	593	600	12	0	0	0

There is a discrepancy between the modelled and reference sequences:

Chain	Residue	Modelled	Actual	Comment	Reference
A	49	ALA	PRO	engineered mutation	UNP O95363

- Molecule 2 is PHENYLALANINE (three-letter code: PHE) (formula: C₉H₁₁NO₂).



Mol	Chain	Residues	Atoms				ZeroOcc	AltConf
			Total	C	N	O		
2	A	1	12	9	1	2	0	0

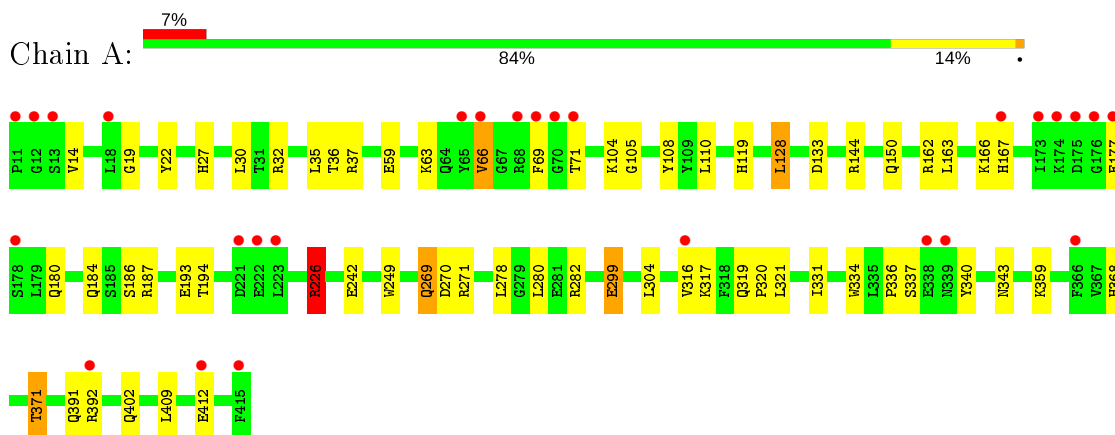
- Molecule 3 is water.

Mol	Chain	Residues	Atoms		ZeroOcc	AltConf
3	A	259	Total 259	O 259	0	0

3 Residue-property plots [i](#)

These plots are drawn for all protein, RNA and DNA chains in the entry. The first graphic for a chain summarises the proportions of the various outlier classes displayed in the second graphic. The second graphic shows the sequence view annotated by issues in geometry and electron density. Residues are color-coded according to the number of geometric quality criteria for which they contain at least one outlier: green = 0, yellow = 1, orange = 2 and red = 3 or more. A red dot above a residue indicates a poor fit to the electron density ($RSRZ > 2$). Stretches of 2 or more consecutive residues without any outlier are shown as a green connector. Residues present in the sample, but not in the model, are shown in grey.

- Molecule 1: Phenylalanine-tRNA ligase, mitochondrial



4 Data and refinement statistics

Property	Value	Source
Space group	P 21 21 21	Depositor
Cell constants a, b, c, α , β , γ	55.05Å 89.36Å 97.23Å 90.00° 90.00° 90.00°	Depositor
Resolution (Å)	47.90 – 1.87 47.90 – 1.87	Depositor EDS
% Data completeness (in resolution range)	99.7 (47.90-1.87) 93.0 (47.90-1.87)	Depositor EDS
R_{merge}	(Not available)	Depositor
R_{sym}	(Not available)	Depositor
$\langle I/\sigma(I) \rangle$ ¹	0.64 (at 1.87Å)	Xtrriage
Refinement program	PHENIX 1.10.1_2155	Depositor
R, R_{free}	0.198 , 0.230 0.198 , 0.230	Depositor DCC
R_{free} test set	2005 reflections (4.98%)	wwPDB-VP
Wilson B-factor (Å ²)	32.9	Xtrriage
Anisotropy	0.334	Xtrriage
Bulk solvent k_{sol} (e/Å ³), B_{sol} (Å ²)	0.34 , 42.0	EDS
L-test for twinning ²	$\langle L \rangle = 0.47$, $\langle L^2 \rangle = 0.31$	Xtrriage
Estimated twinning fraction	No twinning to report.	Xtrriage
F_o, F_c correlation	0.96	EDS
Total number of atoms	3622	wwPDB-VP
Average B, all atoms (Å ²)	42.0	wwPDB-VP

Xtrriage's analysis on translational NCS is as follows: *The largest off-origin peak in the Patterson function is 5.27% of the height of the origin peak. No significant pseudotranslation is detected.*

¹Intensities estimated from amplitudes.

²Theoretical values of $\langle |L| \rangle$, $\langle L^2 \rangle$ for acentric reflections are 0.5, 0.333 respectively for untwinned datasets, and 0.375, 0.2 for perfectly twinned datasets.

5 Model quality [i](#)

5.1 Standard geometry [i](#)

The Z score for a bond length (or angle) is the number of standard deviations the observed value is removed from the expected value. A bond length (or angle) with $|Z| > 5$ is considered an outlier worth inspection. RMSZ is the root-mean-square of all Z scores of the bond lengths (or angles).

Mol	Chain	Bond lengths		Bond angles	
		RMSZ	# Z >5	RMSZ	# Z >5
1	A	0.38	0/3443	0.59	2/4661 (0.0%)

There are no bond length outliers.

All (2) bond angle outliers are listed below:

Mol	Chain	Res	Type	Atoms	Z	Observed(°)	Ideal(°)
1	A	226	ARG	NE-CZ-NH1	5.32	122.96	120.30
1	A	128	LEU	CA-CB-CG	5.32	127.53	115.30

There are no chirality outliers.

There are no planarity outliers.

5.2 Too-close contacts [i](#)

In the following table, the Non-H and H(model) columns list the number of non-hydrogen atoms and hydrogen atoms in the chain respectively. The H(added) column lists the number of hydrogen atoms added and optimized by MolProbity. The Clashes column lists the number of clashes within the asymmetric unit, whereas Symm-Clashes lists symmetry related clashes.

Mol	Chain	Non-H	H(model)	H(added)	Clashes	Symm-Clashes
1	A	3351	0	3260	34	0
2	A	12	0	8	0	0
3	A	259	0	0	9	1
All	All	3622	0	3268	34	1

The all-atom clashscore is defined as the number of clashes found per 1000 atoms (including hydrogen atoms). The all-atom clashscore for this structure is 5.

All (34) close contacts within the same asymmetric unit are listed below, sorted by their clash magnitude.

Atom-1	Atom-2	Interatomic distance (Å)	Clash overlap (Å)
1:A:402:GLN:NE2	3:A:601:HOH:O	1.90	1.03
1:A:402:GLN:OE1	3:A:602:HOH:O	1.97	0.81
1:A:19:GLY:O	3:A:603:HOH:O	2.00	0.79
1:A:282:ARG:NH1	3:A:608:HOH:O	2.21	0.73
1:A:187:ARG:HD3	3:A:604:HOH:O	1.91	0.71
1:A:30:LEU:HD13	1:A:35:LEU:HD21	1.78	0.65
1:A:334:TRP:HB2	1:A:412:GLU:HB3	1.82	0.61
1:A:66:VAL:HA	1:A:71:THR:HG22	1.83	0.60
1:A:193:GLU:HG2	1:A:194:THR:HG23	1.85	0.58
1:A:187:ARG:NH1	3:A:604:HOH:O	2.10	0.57
1:A:391:GLN:NE2	3:A:611:HOH:O	2.35	0.54
1:A:133:ASP:OD2	1:A:271:ARG:NH1	2.41	0.53
1:A:331:ILE:HD12	1:A:402:GLN:HG2	1.91	0.53
1:A:226:ARG:HD3	1:A:242:GLU:OE1	2.10	0.52
1:A:105:GLY:O	1:A:343:ASN:ND2	2.36	0.52
1:A:177:GLU:OE1	3:A:607:HOH:O	2.19	0.50
1:A:282:ARG:HD2	3:A:806:HOH:O	2.11	0.50
1:A:336:PRO:HD2	1:A:340:TYR:HB2	1.92	0.50
1:A:59:GLU:HG2	1:A:63:LYS:HD2	1.93	0.49
1:A:359:LYS:HB2	1:A:359:LYS:HE3	1.48	0.48
1:A:226:ARG:HD2	1:A:249:TRP:CE3	2.49	0.48
1:A:22:TYR:CG	1:A:110:LEU:HD23	2.50	0.46
1:A:270:ASP:OD1	1:A:270:ASP:N	2.49	0.46
1:A:27:HIS:CD2	1:A:104:LYS:HE2	2.53	0.44
1:A:368:HIS:HB3	1:A:371:THR:HG23	1.99	0.44
1:A:167:HIS:ND1	1:A:167:HIS:N	2.62	0.44
1:A:278:LEU:HD11	1:A:280:LEU:HD23	1.99	0.44
1:A:27:HIS:CE1	1:A:104:LYS:HE2	2.53	0.44
1:A:299:GLU:HA	1:A:304:LEU:HD11	2.01	0.43
1:A:166:LYS:HD2	1:A:180:GLN:HA	2.02	0.42
1:A:319:GLN:HA	1:A:320:PRO:HD3	1.96	0.41
1:A:108:TYR:CZ	1:A:144:ARG:HG2	2.56	0.41
1:A:32:ARG:O	1:A:36:THR:HG23	2.21	0.40
1:A:269:GLN:CD	1:A:269:GLN:H	2.24	0.40

All (1) symmetry-related close contacts are listed below. The label for Atom-2 includes the symmetry operator and encoded unit-cell translations to be applied.

Atom-1	Atom-2	Interatomic distance (Å)	Clash overlap (Å)
3:A:700:HOH:O	3:A:783:HOH:O 3_545]	2.01	0.19

5.3 Torsion angles [i](#)

5.3.1 Protein backbone [i](#)

In the following table, the Percentiles column shows the percent Ramachandran outliers of the chain as a percentile score with respect to all X-ray entries followed by that with respect to entries of similar resolution.

The Analysed column shows the number of residues for which the backbone conformation was analysed, and the total number of residues.

Mol	Chain	Analysed	Favoured	Allowed	Outliers	Percentiles
1	A	403/405 (100%)	385 (96%)	14 (4%)	4 (1%)	15 6

All (4) Ramachandran outliers are listed below:

Mol	Chain	Res	Type
1	A	14	VAL
1	A	69	PHE
1	A	337	SER
1	A	66	VAL

5.3.2 Protein sidechains [i](#)

In the following table, the Percentiles column shows the percent sidechain outliers of the chain as a percentile score with respect to all X-ray entries followed by that with respect to entries of similar resolution.

The Analysed column shows the number of residues for which the sidechain conformation was analysed, and the total number of residues.

Mol	Chain	Analysed	Rotameric	Outliers	Percentiles
1	A	363/363 (100%)	346 (95%)	17 (5%)	26 14

All (17) residues with a non-rotameric sidechain are listed below:

Mol	Chain	Res	Type
1	A	37	ARG
1	A	119	HIS
1	A	128	LEU
1	A	150	GLN
1	A	162	ARG
1	A	163	LEU
1	A	184	GLN

Continued on next page...

Continued from previous page...

Mol	Chain	Res	Type
1	A	186	SER
1	A	226	ARG
1	A	269	GLN
1	A	299	GLU
1	A	316	VAL
1	A	317	LYS
1	A	321	LEU
1	A	371	THR
1	A	392	ARG
1	A	409	LEU

Some sidechains can be flipped to improve hydrogen bonding and reduce clashes. There are no such sidechains identified.

5.3.3 RNA [i](#)

There are no RNA molecules in this entry.

5.4 Non-standard residues in protein, DNA, RNA chains [i](#)

There are no non-standard protein/DNA/RNA residues in this entry.

5.5 Carbohydrates [i](#)

There are no carbohydrates in this entry.

5.6 Ligand geometry [i](#)

1 ligand is modelled in this entry.

There are no bond length outliers.

There are no bond angle outliers.

There are no chirality outliers.

There are no torsion outliers.

There are no ring outliers.

No monomer is involved in short contacts.

5.7 Other polymers [i](#)

There are no such residues in this entry.

5.8 Polymer linkage issues [i](#)

There are no chain breaks in this entry.

6 Fit of model and data

6.1 Protein, DNA and RNA chains

In the following table, the column labelled ‘#RSRZ> 2’ contains the number (and percentage) of RSRZ outliers, followed by percent RSRZ outliers for the chain as percentile scores relative to all X-ray entries and entries of similar resolution. The OWAB column contains the minimum, median, 95th percentile and maximum values of the occupancy-weighted average B-factor per residue. The column labelled ‘Q< 0.9’ lists the number of (and percentage) of residues with an average occupancy less than 0.9.

Mol	Chain	Analysed	<RSRZ>	#RSRZ>2	OWAB(Å ²)	Q<0.9
1	A	405/405 (100%)	0.38	27 (6%) 17 19	24, 40, 66, 93	0

All (27) RSRZ outliers are listed below:

Mol	Chain	Res	Type	RSRZ
1	A	415	PHE	9.0
1	A	176	GLY	8.7
1	A	174	LYS	5.4
1	A	338	GLU	4.4
1	A	177	GLU	4.2
1	A	65	TYR	4.1
1	A	70	GLY	3.9
1	A	339	ASN	3.4
1	A	69	PHE	3.1
1	A	316	VAL	3.0
1	A	173	ILE	2.9
1	A	175	ASP	2.9
1	A	222	GLU	2.6
1	A	167	HIS	2.5
1	A	221	ASP	2.5
1	A	412	GLU	2.4
1	A	68	ARG	2.4
1	A	392	ARG	2.4
1	A	66	VAL	2.3
1	A	366	PHE	2.3
1	A	178	SER	2.2
1	A	12	GLY	2.2
1	A	13	SER	2.2
1	A	11	PRO	2.2
1	A	223	LEU	2.1
1	A	18	LEU	2.1
1	A	71	THR	2.0

6.2 Non-standard residues in protein, DNA, RNA chains [i](#)

There are no non-standard protein/DNA/RNA residues in this entry.

6.3 Carbohydrates [i](#)

There are no carbohydrates in this entry.

6.4 Ligands [i](#)

In the following table, the Atoms column lists the number of modelled atoms in the group and the number defined in the chemical component dictionary. The B-factors column lists the minimum, median, 95th percentile and maximum values of B factors of atoms in the group. The column labelled 'Q< 0.9' lists the number of atoms with occupancy less than 0.9.

Mol	Type	Chain	Res	Atoms	RSCC	RSR	B-factors(\AA^2)	Q<0.9
2	PHE	A	501	12/12	0.95	0.09	24,26,31,34	0

6.5 Other polymers [i](#)

There are no such residues in this entry.