



# Full wwPDB X-ray Structure Validation Report ⓘ

Nov 6, 2023 – 12:37 PM EST

PDB ID : 3KDZ  
Title : X-ray crystal structure of a tyrosine aminomutase mutant construct with bound ligand  
Authors : Cooke, H.A.; Bruner, S.D.  
Deposited on : 2009-10-23  
Resolution : 2.20 Å(reported)

This is a Full wwPDB X-ray Structure Validation Report for a publicly released PDB entry.

We welcome your comments at [validation@mail.wwpdb.org](mailto:validation@mail.wwpdb.org)

A user guide is available at

<https://www.wwpdb.org/validation/2017/XrayValidationReportHelp>

with specific help available everywhere you see the ⓘ symbol.

The types of validation reports are described at

<http://www.wwpdb.org/validation/2017/FAQs#types>.

---

The following versions of software and data (see [references ⓘ](#)) were used in the production of this report:

MolProbity : 4.02b-467  
Mogul : 1.8.5 (274361), CSD as541be (2020)  
Xtriage (Phenix) : 1.13  
EDS : 2.36  
Percentile statistics : 20191225.v01 (using entries in the PDB archive December 25th 2019)  
Refmac : 5.8.0158  
CCP4 : 7.0.044 (Gargrove)  
Ideal geometry (proteins) : Engh & Huber (2001)  
Ideal geometry (DNA, RNA) : Parkinson et al. (1996)  
Validation Pipeline (wwPDB-VP) : 2.36

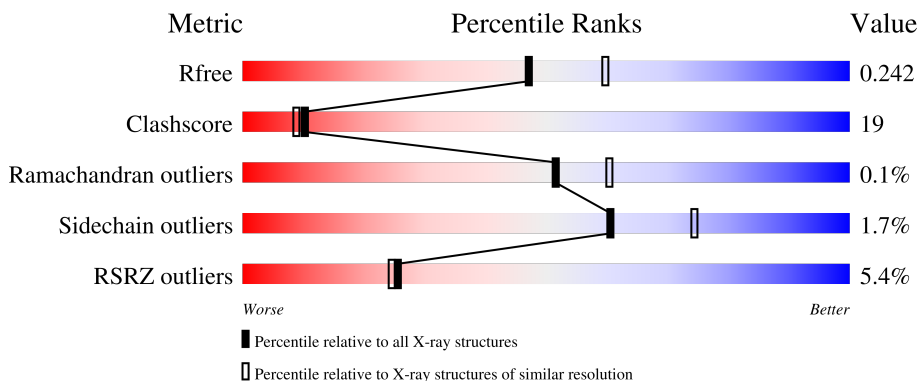
# 1 Overall quality at a glance

The following experimental techniques were used to determine the structure:

*X-RAY DIFFRACTION*

The reported resolution of this entry is 2.20 Å.

Percentile scores (ranging between 0-100) for global validation metrics of the entry are shown in the following graphic. The table shows the number of entries on which the scores are based.



Metric	Whole archive (#Entries)	Similar resolution (#Entries, resolution range(Å))
$R_{free}$	130704	4898 (2.20-2.20)
Clashscore	141614	5594 (2.20-2.20)
Ramachandran outliers	138981	5503 (2.20-2.20)
Sidechain outliers	138945	5504 (2.20-2.20)
RSRZ outliers	127900	4800 (2.20-2.20)

The table below summarises the geometric issues observed across the polymeric chains and their fit to the electron density. The red, orange, yellow and green segments of the lower bar indicate the fraction of residues that contain outliers for  $\geq 3$ , 2, 1 and 0 types of geometric quality criteria respectively. A grey segment represents the fraction of residues that are not modelled. The numeric value for each fraction is indicated below the corresponding segment, with a dot representing fractions  $\leq 5\%$ . The upper red bar (where present) indicates the fraction of residues that have poor fit to the electron density. The numeric value is given above the bar.

Mol	Chain	Length	Quality of chain
1	A	537	 6% 68% 29% ..
1	B	537	 4% 72% 24% ...

The following table lists non-polymeric compounds, carbohydrate monomers and non-standard residues in protein, DNA, RNA chains that are outliers for geometric or electron-density-fit criteria:

Mol	Type	Chain	Res	Chirality	Geometry	Clashes	Electron density
2	TYR	A	600	-	-	X	X
2	TYR	B	600	-	-	-	X

## 2 Entry composition

There are 3 unique types of molecules in this entry. The entry contains 8266 atoms, of which 0 are hydrogens and 0 are deuteriums.

In the tables below, the ZeroOcc column contains the number of atoms modelled with zero occupancy, the AltConf column contains the number of residues with at least one atom in alternate conformation and the Trace column contains the number of residues modelled with at most 2 atoms.

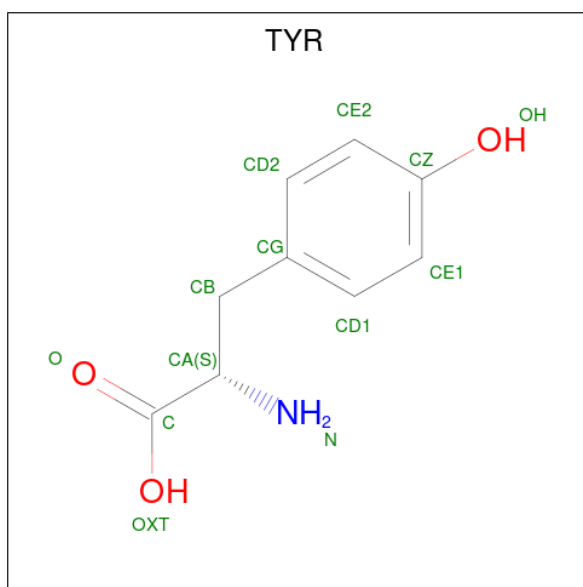
- Molecule 1 is a protein called Histidine ammonia-lyase.

Mol	Chain	Residues	Atoms					ZeroOcc	AltConf	Trace
			Total	C	N	O	S			
1	A	527	4012	2508	728	768	8	0	0	0
1	B	527	4012	2508	728	768	8	0	0	0

There are 8 discrepancies between the modelled and reference sequences:

Chain	Residue	Modelled	Actual	Comment	Reference
A	63	PHE	TYR	engineered mutation	UNP Q8GMG0
A	152	MDO	ALA	chromophore	UNP Q8GMG0
A	152	MDO	SER	chromophore	UNP Q8GMG0
A	152	MDO	GLY	chromophore	UNP Q8GMG0
B	63	PHE	TYR	engineered mutation	UNP Q8GMG0
B	152	MDO	ALA	chromophore	UNP Q8GMG0
B	152	MDO	SER	chromophore	UNP Q8GMG0
B	152	MDO	GLY	chromophore	UNP Q8GMG0

- Molecule 2 is TYROSINE (three-letter code: TYR) (formula: C<sub>9</sub>H<sub>11</sub>NO<sub>3</sub>).



Mol	Chain	Residues	Atoms			ZeroOcc	AltConf	
2	A	1	Total	C	N	O	0	0
			13	9	1	3		
2	B	1	Total	C	N	O	0	0
			13	9	1	3		

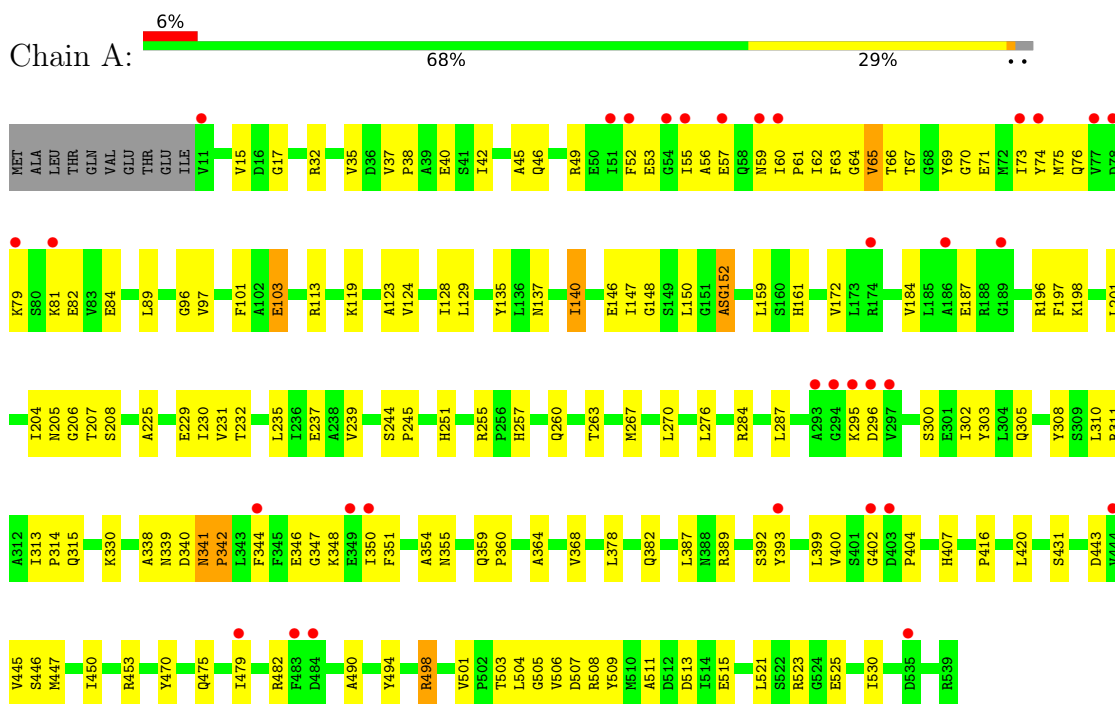
- Molecule 3 is water.

Mol	Chain	Residues	Atoms		ZeroOcc	AltConf
3	A	94	Total	O	0	0
			94	94		
3	B	122	Total	O	0	0
			122	122		

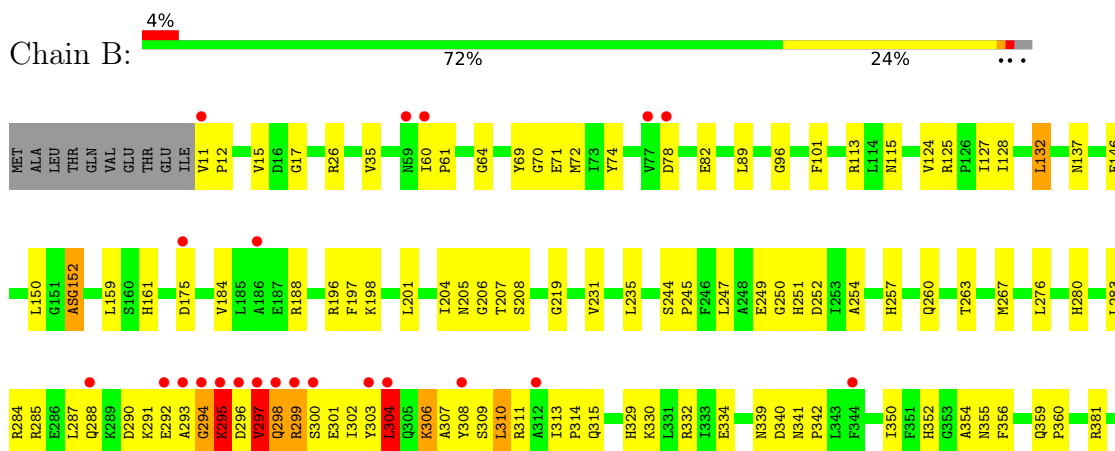
### 3 Residue-property plots [i](#)

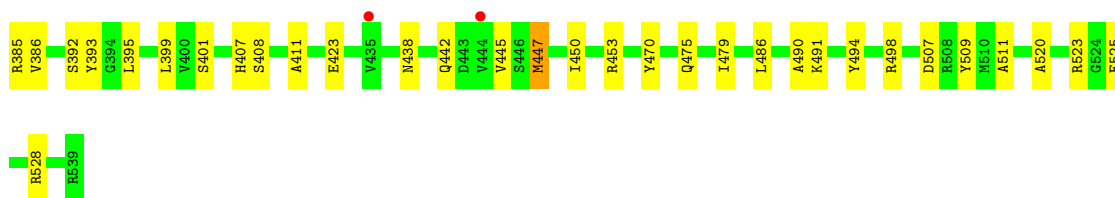
These plots are drawn for all protein, RNA, DNA and oligosaccharide chains in the entry. The first graphic for a chain summarises the proportions of the various outlier classes displayed in the second graphic. The second graphic shows the sequence view annotated by issues in geometry and electron density. Residues are color-coded according to the number of geometric quality criteria for which they contain at least one outlier: green = 0, yellow = 1, orange = 2 and red = 3 or more. A red dot above a residue indicates a poor fit to the electron density ( $RSRZ > 2$ ). Stretches of 2 or more consecutive residues without any outlier are shown as a green connector. Residues present in the sample, but not in the model, are shown in grey.

- Molecule 1: Histidine ammonia-lyase



- Molecule 1: Histidine ammonia-lyase





## 4 Data and refinement statistics

Property	Value	Source
Space group	P 21 21 2	Depositor
Cell constants a, b, c, $\alpha$ , $\beta$ , $\gamma$	92.72Å 145.94Å 74.81Å 90.00° 90.00° 90.00°	Depositor
Resolution (Å)	39.40 – 2.20 39.41 – 2.20	Depositor EDS
% Data completeness (in resolution range)	95.9 (39.40-2.20) 95.8 (39.41-2.20)	Depositor EDS
$R_{merge}$	(Not available)	Depositor
$R_{sym}$	0.09	Depositor
$\langle I/\sigma(I) \rangle$ <sup>1</sup>	3.69 (at 2.20Å)	Xtrriage
Refinement program	CNS	Depositor
R, $R_{free}$	0.205 , 0.249 0.197 , 0.242	Depositor DCC
$R_{free}$ test set	5279 reflections (10.06%)	wwPDB-VP
Wilson B-factor (Å <sup>2</sup> )	34.9	Xtrriage
Anisotropy	0.659	Xtrriage
Bulk solvent $k_{sol}$ (e/Å <sup>3</sup> ), $B_{sol}$ (Å <sup>2</sup> )	0.38 , 40.1	EDS
L-test for twinning <sup>2</sup>	$\langle  L  \rangle = 0.47$ , $\langle L^2 \rangle = 0.30$	Xtrriage
Estimated twinning fraction	No twinning to report.	Xtrriage
$F_o, F_c$ correlation	0.95	EDS
Total number of atoms	8266	wwPDB-VP
Average B, all atoms (Å <sup>2</sup> )	42.0	wwPDB-VP

Xtrriage's analysis on translational NCS is as follows: *The largest off-origin peak in the Patterson function is 4.50% of the height of the origin peak. No significant pseudotranslation is detected.*

<sup>1</sup>Intensities estimated from amplitudes.

<sup>2</sup>Theoretical values of  $\langle |L| \rangle$ ,  $\langle L^2 \rangle$  for acentric reflections are 0.5, 0.333 respectively for untwinned datasets, and 0.375, 0.2 for perfectly twinned datasets.



## 5 Model quality [i](#)

### 5.1 Standard geometry [i](#)

Bond lengths and bond angles in the following residue types are not validated in this section: MDO

The Z score for a bond length (or angle) is the number of standard deviations the observed value is removed from the expected value. A bond length (or angle) with  $|Z| > 5$  is considered an outlier worth inspection. RMSZ is the root-mean-square of all Z scores of the bond lengths (or angles).

Mol	Chain	Bond lengths		Bond angles	
		RMSZ	# Z  >5	RMSZ	# Z  >5
1	A	0.35	1/4058 (0.0%)	0.61	1/5499 (0.0%)
1	B	0.51	8/4058 (0.2%)	0.69	6/5499 (0.1%)
All	All	0.43	9/8116 (0.1%)	0.65	7/10998 (0.1%)

Chiral center outliers are detected by calculating the chiral volume of a chiral center and verifying if the center is modelled as a planar moiety or with the opposite hand. A planarity outlier is detected by checking planarity of atoms in a peptide group, atoms in a mainchain group or atoms of a sidechain that are expected to be planar.

Mol	Chain	#Chirality outliers	#Planarity outliers
1	B	0	1

All (9) bond length outliers are listed below:

Mol	Chain	Res	Type	Atoms	Z	Observed(Å)	Ideal(Å)
1	B	294	GLY	C-O	-8.15	1.10	1.23
1	B	297	VAL	CB-CG1	-7.86	1.36	1.52
1	B	300	SER	C-O	-7.09	1.09	1.23
1	B	300	SER	CB-OG	-6.58	1.33	1.42
1	B	293	ALA	CA-CB	-6.49	1.38	1.52
1	B	300	SER	CA-CB	-6.13	1.43	1.52
1	B	297	VAL	CB-CG2	-6.09	1.40	1.52
1	A	342	PRO	N-CD	5.65	1.55	1.47
1	B	295	LYS	CA-C	-5.61	1.38	1.52

All (7) bond angle outliers are listed below:

Mol	Chain	Res	Type	Atoms	Z	Observed(°)	Ideal(°)
1	B	306	LYS	CB-CA-C	-11.39	87.62	110.40
1	B	306	LYS	N-CA-C	9.16	135.73	111.00

*Continued on next page...*

Continued from previous page...

Mol	Chain	Res	Type	Atoms	Z	Observed(°)	Ideal(°)
1	B	304	LEU	N-CA-C	-7.44	90.91	111.00
1	B	298	GLN	N-CA-C	-6.39	93.76	111.00
1	B	310	LEU	CB-CA-C	-6.02	98.76	110.20
1	B	300	SER	CB-CA-C	-5.80	99.08	110.10
1	A	341	ASN	CB-CA-C	5.43	121.26	110.40

There are no chirality outliers.

All (1) planarity outliers are listed below:

Mol	Chain	Res	Type	Group
1	B	294	GLY	Mainchain

## 5.2 Too-close contacts [i](#)

In the following table, the Non-H and H(model) columns list the number of non-hydrogen atoms and hydrogen atoms in the chain respectively. The H(added) column lists the number of hydrogen atoms added and optimized by MolProbity. The Clashes column lists the number of clashes within the asymmetric unit, whereas Symm-Clashes lists symmetry-related clashes.

Mol	Chain	Non-H	H(model)	H(added)	Clashes	Symm-Clashes
1	A	4012	0	4035	192	0
1	B	4012	0	4033	164	1
2	A	13	0	8	7	0
2	B	13	0	8	4	0
3	A	94	0	0	5	0
3	B	122	0	0	5	0
All	All	8266	0	8084	303	1

The all-atom clashscore is defined as the number of clashes found per 1000 atoms (including hydrogen atoms). The all-atom clashscore for this structure is 19.

All (303) close contacts within the same asymmetric unit are listed below, sorted by their clash magnitude.

Atom-1	Atom-2	Interatomic distance (Å)	Clash overlap (Å)
1:A:152:MDO:CB2	2:A:600:TYR:N	1.87	1.36
1:A:295:LYS:HB2	3:A:679:HOH:O	1.37	1.18
1:B:295:LYS:HE2	1:B:297:VAL:N	1.62	1.14
1:A:152:MDO:HB22	2:A:600:TYR:N	1.50	1.14
1:A:73:ILE:CD1	1:B:304:LEU:HB3	1.82	1.09

Continued on next page...

*Continued from previous page...*

Atom-1	Atom-2	Interatomic distance (Å)	Clash overlap (Å)
1:B:299:ARG:HD2	1:B:299:ARG:N	1.66	1.06
1:A:350:ILE:H	1:A:350:ILE:HD12	1.22	1.03
1:A:73:ILE:HD12	1:B:306:LYS:HZ3	1.21	1.02
1:B:299:ARG:HD2	1:B:299:ARG:H	1.18	1.02
1:A:152:MDO:HB21	1:B:308:TYR:OH	1.60	1.02
1:A:73:ILE:HD11	1:B:304:LEU:HB3	1.42	1.00
1:B:295:LYS:HE2	1:B:297:VAL:H	0.82	0.97
1:B:35:VAL:H	1:B:137:ASN:HD21	1.07	0.96
1:B:306:LYS:O	1:B:311:ARG:NH2	1.98	0.95
1:B:235:LEU:HD11	1:B:386:VAL:HG11	1.47	0.94
1:B:299:ARG:HG2	1:B:299:ARG:HH11	1.33	0.93
1:A:63:PHE:HZ	2:A:600:TYR:HB3	1.34	0.92
1:B:299:ARG:H	1:B:299:ARG:CD	1.81	0.90
1:A:35:VAL:H	1:A:137:ASN:HD21	1.17	0.90
1:B:295:LYS:CE	1:B:297:VAL:H	1.79	0.89
1:B:447:MET:HG3	1:B:450:ILE:HD12	1.52	0.89
1:A:53:GLU:O	1:A:57:GLU:HG2	1.73	0.88
1:A:251:HIS:HD2	1:A:260:GLN:HG2	1.36	0.88
1:A:284:ARG:HD2	1:B:60:ILE:HD12	1.56	0.86
1:A:73:ILE:HD13	1:B:304:LEU:HB3	1.56	0.86
1:A:73:ILE:HD12	1:B:306:LYS:NZ	1.91	0.84
1:A:63:PHE:CZ	2:A:600:TYR:HB3	2.13	0.83
1:A:73:ILE:CD1	1:B:304:LEU:CB	2.55	0.82
1:A:75:MET:HE1	1:B:299:ARG:HA	1.62	0.80
1:B:295:LYS:HE3	1:B:296:ASP:H	1.45	0.80
1:A:251:HIS:CD2	1:A:260:GLN:HG2	2.18	0.78
1:A:64:GLY:HA3	1:A:201:LEU:HD22	1.65	0.78
1:B:247:LEU:HB3	1:B:249:GLU:OE2	1.83	0.77
1:A:344:PHE:HE1	1:A:350:ILE:HG13	1.50	0.76
1:A:73:ILE:HD11	1:B:304:LEU:CB	2.13	0.75
1:A:96:GLY:H	1:A:161:HIS:HE1	1.32	0.75
1:A:350:ILE:H	1:A:350:ILE:CD1	1.98	0.74
1:A:498:ARG:HE	1:A:498:ARG:HA	1.52	0.73
1:A:350:ILE:HD12	1:A:350:ILE:N	2.03	0.72
1:A:75:MET:HE1	1:B:299:ARG:CA	2.18	0.72
1:A:60:ILE:HG22	1:B:288:GLN:NE2	2.06	0.71
1:A:407:HIS:HD2	1:A:507:ASP:H	1.39	0.70
1:B:235:LEU:HD11	1:B:386:VAL:CG1	2.19	0.70
1:A:198:LYS:O	1:A:198:LYS:HG2	1.91	0.70
1:A:73:ILE:CD1	1:B:306:LYS:HZ3	2.00	0.69
1:B:392:SER:HB3	1:B:395:LEU:HB2	1.76	0.67

*Continued on next page...*

*Continued from previous page...*

Atom-1	Atom-2	Interatomic distance (Å)	Clash overlap (Å)
1:A:61:PRO:HG2	1:B:287:LEU:HB3	1.76	0.67
1:A:135:TYR:HA	1:A:140:ILE:HG23	1.75	0.67
1:A:350:ILE:HD13	1:B:280:HIS:HE1	1.60	0.67
1:A:75:MET:HE1	1:B:299:ARG:CB	2.24	0.67
1:A:207:THR:H	1:A:339:ASN:HD22	1.41	0.67
1:B:295:LYS:HE3	1:B:296:ASP:N	2.11	0.66
1:B:15:VAL:HG13	1:B:115:ASN:HD22	1.60	0.66
1:A:402:GLY:N	3:A:662:HOH:O	2.14	0.66
1:A:172:VAL:HG21	1:A:184:VAL:HG21	1.78	0.65
1:B:295:LYS:CD	1:B:297:VAL:O	2.44	0.65
1:A:75:MET:CE	1:B:299:ARG:HB3	2.25	0.65
1:A:400:VAL:HG21	1:A:404:PRO:HB3	1.77	0.65
1:A:508:ARG:NH1	1:A:513:ASP:OD2	2.30	0.65
2:B:600:TYR:O	3:B:692:HOH:O	2.14	0.65
1:B:299:ARG:HG2	1:B:299:ARG:NH1	2.10	0.64
1:B:82:GLU:HG3	1:B:197:PHE:CD1	2.33	0.64
1:B:184:VAL:O	1:B:188:ARG:HG2	1.98	0.63
1:A:123:ALA:HB2	1:A:344:PHE:CD2	2.34	0.63
1:A:135:TYR:HA	1:A:140:ILE:CG2	2.28	0.63
1:A:330:LYS:HE2	1:A:330:LYS:HA	1.79	0.63
1:B:249:GLU:H	1:B:249:GLU:CD	2.00	0.63
1:B:301:GLU:HG3	1:B:302:ILE:HD12	1.80	0.62
1:B:298:GLN:C	1:B:299:ARG:HD2	2.19	0.62
1:A:35:VAL:HG12	1:A:137:ASN:ND2	2.14	0.62
1:B:309:SER:O	1:B:313:ILE:HD11	1.99	0.62
1:A:15:VAL:HG23	1:A:35:VAL:HG23	1.82	0.61
1:B:330:LYS:HA	1:B:330:LYS:HE2	1.80	0.61
1:B:298:GLN:CA	1:B:299:ARG:HD2	2.30	0.61
1:B:392:SER:HB2	3:B:691:HOH:O	2.01	0.61
1:A:69:TYR:HB3	2:A:600:TYR:CE2	2.35	0.61
1:A:232:THR:HG21	1:A:313:ILE:HG12	1.83	0.61
1:A:75:MET:HE3	1:B:299:ARG:HB3	1.82	0.60
1:A:172:VAL:CG2	1:A:184:VAL:HG21	2.30	0.60
1:A:73:ILE:HD13	1:B:304:LEU:CB	2.24	0.60
1:B:35:VAL:N	1:B:137:ASN:HD21	1.90	0.60
1:B:231:VAL:HB	1:B:470:TYR:CE1	2.37	0.60
1:A:475:GLN:NE2	1:A:504:LEU:HB3	2.17	0.60
1:A:311:ARG:NH2	2:B:600:TYR:O	2.35	0.60
1:A:344:PHE:CE1	1:A:350:ILE:HG13	2.35	0.60
1:B:407:HIS:CD2	1:B:507:ASP:H	2.20	0.59
1:B:69:TYR:HB3	2:B:600:TYR:CE2	2.38	0.59

*Continued on next page...*

*Continued from previous page...*

Atom-1	Atom-2	Interatomic distance (Å)	Clash overlap (Å)
1:B:401:SER:HB2	3:B:609:HOH:O	2.03	0.59
1:A:355:ASN:ND2	1:B:315:GLN:HE21	2.00	0.59
1:B:251:HIS:HD2	1:B:260:GLN:HE21	1.49	0.59
1:A:73:ILE:HB	1:B:306:LYS:HD2	1.84	0.59
1:B:407:HIS:HD2	1:B:507:ASP:H	1.49	0.59
1:B:207:THR:H	1:B:339:ASN:HD22	1.51	0.59
1:A:123:ALA:HB2	1:A:344:PHE:HD2	1.67	0.59
1:A:305:GLN:HE22	1:B:341:ASN:HD21	1.50	0.59
1:A:308:TYR:CZ	1:B:442:GLN:HG2	2.37	0.58
1:B:284:ARG:HH22	1:B:285:ARG:NH2	2.02	0.58
1:A:251:HIS:CD2	1:A:260:GLN:HE21	2.21	0.58
1:B:17:GLY:H	1:B:115:ASN:ND2	2.01	0.58
1:B:299:ARG:N	1:B:299:ARG:CD	2.30	0.58
1:A:82:GLU:OE2	1:A:196:ARG:HB3	2.04	0.58
1:A:70:GLY:O	1:B:306:LYS:HE2	2.03	0.57
1:A:62:ILE:HB	1:A:65:VAL:HG13	1.87	0.57
1:B:71:GLU:H	1:B:438:ASN:HD21	1.50	0.57
1:A:230:ILE:HD13	1:A:530:ILE:HD13	1.86	0.57
1:A:402:GLY:CA	3:A:662:HOH:O	2.53	0.57
1:A:55:ILE:HG22	1:A:60:ILE:HD11	1.85	0.57
1:A:355:ASN:HD22	1:B:315:GLN:HE21	1.52	0.56
1:A:59:ASN:OD1	1:A:79:LYS:HG3	2.05	0.56
1:A:65:VAL:HG23	1:A:197:PHE:CD1	2.39	0.56
1:A:251:HIS:HD2	1:A:260:GLN:CG	2.14	0.56
1:A:60:ILE:HD12	1:A:60:ILE:C	2.26	0.56
1:A:15:VAL:CG2	1:A:35:VAL:HG23	2.36	0.56
1:B:295:LYS:HD2	1:B:297:VAL:O	2.04	0.56
1:A:310:LEU:HA	1:A:313:ILE:HD11	1.88	0.55
1:A:38:PRO:HB2	1:A:40:GLU:HG2	1.88	0.55
1:A:346:GLU:HG3	1:A:346:GLU:O	2.05	0.55
1:A:311:ARG:HH21	1:B:356:PHE:HE2	1.55	0.55
1:A:402:GLY:HA3	3:A:662:HOH:O	2.07	0.55
1:B:298:GLN:HA	1:B:299:ARG:HD2	1.89	0.55
1:A:74:TYR:HD2	1:A:75:MET:HE2	1.72	0.55
1:B:520:ALA:O	1:B:525:GLU:HG2	2.07	0.55
1:A:523:ARG:NE	1:A:525:GLU:OE1	2.37	0.54
1:A:239:VAL:HG22	1:A:239:VAL:O	2.06	0.54
1:A:359:GLN:N	1:A:360:PRO:HD2	2.22	0.54
1:B:307:ALA:HB2	1:B:385:ARG:NH2	2.23	0.54
1:B:280:HIS:CE1	1:B:284:ARG:HD3	2.43	0.54
1:A:46:GLN:O	1:A:49:ARG:HB3	2.08	0.53

*Continued on next page...*

*Continued from previous page...*

Atom-1	Atom-2	Interatomic distance (Å)	Clash overlap (Å)
1:A:135:TYR:CA	1:A:140:ILE:HG23	2.38	0.53
1:A:152:MDO:CB2	2:A:600:TYR:CA	2.82	0.53
1:A:315:GLN:HE21	1:B:355:ASN:ND2	2.07	0.53
1:A:389:ARG:HG2	3:A:674:HOH:O	2.08	0.53
1:A:313:ILE:HD12	1:A:313:ILE:H	1.73	0.53
1:A:284:ARG:HG3	1:B:61:PRO:HG2	1.91	0.52
1:A:392:SER:O	1:A:393:TYR:HB2	2.09	0.52
1:A:447:MET:HE2	1:A:450:ILE:CD1	2.39	0.52
1:A:308:TYR:OH	1:B:152:MDO:CB2	2.57	0.52
1:B:392:SER:O	1:B:393:TYR:HB2	2.10	0.52
1:A:73:ILE:CG2	1:B:306:LYS:HD2	2.39	0.52
1:B:359:GLN:N	1:B:360:PRO:HD2	2.24	0.52
1:A:207:THR:H	1:A:339:ASN:ND2	2.06	0.52
1:B:113:ARG:NH1	1:B:206:GLY:HA3	2.25	0.52
1:B:15:VAL:CG1	1:B:115:ASN:HD22	2.21	0.52
1:B:313:ILE:HB	1:B:314:PRO:HD3	1.91	0.52
1:A:300:SER:O	1:B:74:TYR:HB2	2.10	0.51
1:A:351:PHE:CZ	1:B:250:GLY:HA3	2.45	0.51
1:A:73:ILE:HD13	1:B:304:LEU:O	2.11	0.51
1:A:364:ALA:O	1:A:368:VAL:HG23	2.11	0.51
1:B:11:VAL:CG1	1:B:12:PRO:HD3	2.41	0.51
1:A:60:ILE:HD12	1:A:60:ILE:O	2.10	0.51
1:A:350:ILE:HD13	1:B:280:HIS:CE1	2.43	0.51
1:B:251:HIS:CD2	1:B:260:GLN:HE21	2.27	0.51
1:A:509:TYR:CE2	1:A:511:ALA:HB3	2.45	0.51
1:B:124:VAL:CG1	1:B:128:ILE:HB	2.41	0.51
1:A:82:GLU:HG3	1:A:197:PHE:CG	2.46	0.50
1:A:71:GLU:OE2	1:B:303:TYR:CE1	2.64	0.50
1:A:71:GLU:OE2	1:B:303:TYR:HE1	1.93	0.50
1:B:82:GLU:OE2	1:B:196:ARG:HB3	2.11	0.50
1:B:302:ILE:HD12	1:B:302:ILE:N	2.27	0.50
1:A:235:LEU:HD23	1:A:235:LEU:O	2.11	0.50
1:A:296:ASP:HA	1:B:78:ASP:HB2	1.93	0.50
1:A:69:TYR:CE1	1:A:89:LEU:HD22	2.46	0.49
1:A:96:GLY:H	1:A:161:HIS:CE1	2.21	0.49
1:B:96:GLY:H	1:B:161:HIS:HE1	1.58	0.49
1:B:159:LEU:HB3	1:B:204:ILE:HA	1.94	0.49
1:A:244:SER:HB3	1:A:245:PRO:HD3	1.95	0.49
1:B:342:PRO:HB2	1:B:350:ILE:HG22	1.95	0.49
1:A:63:PHE:CE1	1:B:306:LYS:NZ	2.72	0.49
1:A:346:GLU:O	1:A:348:LYS:HG2	2.12	0.49

*Continued on next page...*

*Continued from previous page...*

Atom-1	Atom-2	Interatomic distance (Å)	Clash overlap (Å)
1:B:11:VAL:N	1:B:12:PRO:CD	2.75	0.49
1:A:205:ASN:O	1:A:340:ASP:HA	2.13	0.49
1:B:159:LEU:HD12	1:B:204:ILE:O	2.12	0.49
1:A:152:MDO:HB22	2:A:600:TYR:CA	2.39	0.49
1:A:75:MET:HE2	1:A:75:MET:HA	1.95	0.49
1:A:338:ALA:HB3	1:B:254:ALA:HB1	1.94	0.49
1:A:82:GLU:HG3	1:A:197:PHE:CD1	2.48	0.49
1:B:101:PHE:CE1	1:B:146:GLU:HA	2.47	0.48
1:B:308:TYR:HE2	1:B:311:ARG:HH22	1.61	0.48
1:B:295:LYS:HB3	1:B:298:GLN:HG2	1.95	0.48
1:A:315:GLN:HG2	1:B:354:ALA:O	2.13	0.48
1:B:486:LEU:HB3	1:B:490:ALA:HB3	1.95	0.48
1:A:17:GLY:O	1:A:119:LYS:HG3	2.12	0.48
1:B:283:LEU:O	1:B:287:LEU:HB2	2.13	0.48
1:A:76:GLN:HB3	1:B:291:LYS:NZ	2.29	0.48
1:A:79:LYS:HA	1:A:197:PHE:HZ	1.79	0.48
1:B:509:TYR:CE2	1:B:511:ALA:HB3	2.49	0.47
1:A:225:ALA:O	1:A:229:GLU:HG3	2.14	0.47
1:A:257:HIS:HE1	1:B:334:GLU:OE2	1.98	0.47
1:A:231:VAL:HB	1:A:470:TYR:CE1	2.50	0.47
1:A:63:PHE:HA	1:A:67:THR:OG1	2.14	0.47
1:A:113:ARG:HD2	1:A:208:SER:OG	2.15	0.47
1:B:284:ARG:HH22	1:B:285:ARG:HH21	1.60	0.47
1:A:407:HIS:CD2	1:A:507:ASP:H	2.26	0.47
1:A:503:THR:HG22	1:A:504:LEU:N	2.30	0.47
1:B:306:LYS:C	1:B:311:ARG:HH21	2.06	0.47
1:A:287:LEU:HD13	1:A:302:ILE:HB	1.97	0.47
1:B:71:GLU:H	1:B:438:ASN:ND2	2.11	0.47
1:B:72:MET:HE3	3:B:683:HOH:O	2.15	0.47
1:B:276:LEU:HD12	1:B:486:LEU:HD23	1.97	0.46
1:B:523:ARG:NH2	1:B:525:GLU:HG3	2.30	0.46
1:A:60:ILE:HD11	1:A:62:ILE:HD11	1.97	0.46
1:A:284:ARG:HG2	1:A:284:ARG:HH11	1.79	0.46
1:B:17:GLY:H	1:B:115:ASN:HD21	1.62	0.46
1:B:525:GLU:OE1	1:B:528:ARG:NH2	2.49	0.46
1:A:129:LEU:HD12	1:A:129:LEU:N	2.31	0.46
1:B:113:ARG:HH12	1:B:206:GLY:HA3	1.80	0.46
1:B:408:SER:HB3	1:B:411:ALA:HB3	1.97	0.46
1:B:198:LYS:HG2	1:B:198:LYS:O	2.16	0.46
1:B:329:HIS:HD2	1:B:332:ARG:NH1	2.14	0.46
1:A:184:VAL:O	1:A:187:GLU:HB3	2.15	0.46

*Continued on next page...*

*Continued from previous page...*

Atom-1	Atom-2	Interatomic distance (Å)	Clash overlap (Å)
1:A:75:MET:CE	1:B:299:ARG:HA	2.39	0.46
1:A:330:LYS:HZ1	1:B:257:HIS:HD2	1.62	0.46
1:A:447:MET:HE2	1:A:447:MET:HB3	1.90	0.46
1:B:494:TYR:CZ	1:B:498:ARG:HG3	2.50	0.46
1:A:113:ARG:NH1	1:A:206:GLY:HA3	2.30	0.46
1:A:313:ILE:HB	1:A:314:PRO:HD3	1.97	0.46
1:B:150:LEU:O	1:B:445:VAL:HB	2.16	0.46
1:A:65:VAL:HG22	1:A:66:THR:HG23	1.98	0.46
1:A:344:PHE:CE1	1:A:350:ILE:HG23	2.51	0.46
1:A:276:LEU:HD11	1:A:482:ARG:HB3	1.98	0.45
1:A:494:TYR:CE2	1:A:498:ARG:HG3	2.51	0.45
1:B:280:HIS:HB2	3:B:606:HOH:O	2.15	0.45
1:A:63:PHE:O	1:A:65:VAL:HG12	2.16	0.45
1:B:205:ASN:O	1:B:340:ASP:HA	2.17	0.45
1:B:307:ALA:CB	1:B:385:ARG:CZ	2.94	0.45
1:A:53:GLU:HA	1:A:56:ALA:HB3	1.98	0.45
1:A:101:PHE:CE2	1:A:146:GLU:HG2	2.52	0.45
1:A:235:LEU:HD23	1:A:235:LEU:C	2.37	0.45
1:A:147:ILE:HG22	1:A:148:GLY:N	2.32	0.45
1:A:399:LEU:O	1:A:479:ILE:HD11	2.17	0.45
1:A:81:LYS:HB3	1:A:84:GLU:HB3	1.97	0.45
1:B:304:LEU:HD13	1:B:304:LEU:HA	1.76	0.45
1:B:69:TYR:HB3	2:B:600:TYR:CD2	2.51	0.45
1:B:310:LEU:N	1:B:310:LEU:HD23	2.30	0.45
1:A:124:VAL:CG1	1:A:128:ILE:HB	2.46	0.44
1:B:124:VAL:HG12	1:B:125:ARG:N	2.32	0.44
1:B:486:LEU:O	1:B:491:LYS:NZ	2.50	0.44
1:A:73:ILE:CB	1:B:306:LYS:HD2	2.47	0.44
1:A:354:ALA:O	1:B:315:GLN:HG2	2.17	0.44
1:B:11:VAL:N	1:B:12:PRO:HD3	2.32	0.44
1:A:32:ARG:HH12	1:A:103:GLU:HG2	1.83	0.44
1:A:341:ASN:OD1	1:A:342:PRO:HA	2.18	0.44
1:A:37:VAL:HG13	1:A:37:VAL:O	2.18	0.44
1:B:523:ARG:HH21	1:B:525:GLU:HG3	1.82	0.44
1:A:75:MET:CE	1:A:75:MET:HA	2.47	0.44
1:A:330:LYS:NZ	1:B:257:HIS:HD2	2.15	0.44
1:B:132:LEU:HD12	1:B:132:LEU:HA	1.89	0.43
1:A:52:PHE:HZ	1:A:197:PHE:HB3	1.83	0.43
1:A:52:PHE:CZ	1:A:197:PHE:HB3	2.53	0.43
1:A:498:ARG:HA	1:A:501:VAL:O	2.18	0.43
1:B:64:GLY:HA3	1:B:201:LEU:HD22	2.00	0.43

*Continued on next page...*



*Continued from previous page...*

Atom-1	Atom-2	Interatomic distance (Å)	Clash overlap (Å)
1:A:35:VAL:N	1:A:137:ASN:HD21	1.99	0.43
1:A:97:VAL:HG23	1:A:147:ILE:HB	2.00	0.43
1:B:69:TYR:CE2	1:B:89:LEU:HD22	2.53	0.43
1:A:146:GLU:OE1	1:A:453:ARG:HD2	2.19	0.43
1:B:70:GLY:HA3	1:B:438:ASN:HD21	1.83	0.43
1:A:260:GLN:NE2	1:B:355:ASN:HD21	2.17	0.43
1:B:26:ARG:HD2	1:B:219:GLY:HA3	2.00	0.43
1:A:260:GLN:HE22	1:B:355:ASN:HD21	1.66	0.43
1:B:263:THR:O	1:B:267:MET:HG2	2.17	0.43
1:B:295:LYS:CE	1:B:296:ASP:N	2.79	0.43
1:A:303:TYR:HB3	1:A:305:GLN:O	2.19	0.43
1:A:230:ILE:HA	1:A:270:LEU:HD13	2.01	0.43
1:A:416:PRO:O	1:A:420:LEU:HG	2.18	0.43
1:A:231:VAL:HB	1:A:470:TYR:CZ	2.53	0.42
1:B:381:ARG:HA	1:B:381:ARG:NE	2.33	0.42
1:A:62:ILE:HB	1:A:65:VAL:CG1	2.49	0.42
1:B:244:SER:N	1:B:245:PRO:HD2	2.34	0.42
1:B:399:LEU:O	1:B:479:ILE:HD11	2.18	0.42
1:A:346:GLU:O	1:A:347:GLY:C	2.58	0.42
1:A:255:ARG:HD3	1:A:260:GLN:OE1	2.20	0.42
1:A:407:HIS:NE2	1:A:506:VAL:HB	2.35	0.42
1:A:251:HIS:HD2	1:A:260:GLN:HE21	1.67	0.42
1:B:299:ARG:NH1	1:B:299:ARG:CG	2.78	0.42
1:B:308:TYR:CE2	1:B:311:ARG:NH2	2.87	0.42
1:B:475:GLN:HE21	1:B:479:ILE:HD11	1.85	0.42
1:A:159:LEU:HB3	1:A:204:ILE:HA	2.02	0.42
1:A:313:ILE:HD12	1:A:313:ILE:N	2.35	0.41
1:A:305:GLN:HE21	1:B:352:HIS:HB3	1.85	0.41
1:A:378:LEU:O	1:A:382:GLN:HG3	2.19	0.41
1:A:443:ASP:OD2	1:B:309:SER:OG	2.36	0.41
1:B:113:ARG:HD2	1:B:208:SER:OG	2.20	0.41
1:B:307:ALA:HB1	1:B:385:ARG:CZ	2.50	0.41
1:A:63:PHE:CD1	1:B:306:LYS:NZ	2.88	0.41
1:A:387:LEU:HD23	1:A:399:LEU:HG	2.03	0.41
1:B:113:ARG:HD2	1:B:113:ARG:HA	1.64	0.41
1:A:42:ILE:O	1:A:45:ALA:HB3	2.21	0.41
1:A:260:GLN:HE22	1:B:355:ASN:ND2	2.18	0.41
1:A:35:VAL:HG12	1:A:137:ASN:HD21	1.82	0.41
1:A:76:GLN:OE1	1:B:287:LEU:HD22	2.21	0.41
1:A:69:TYR:CZ	1:A:89:LEU:HD22	2.56	0.41
1:A:150:LEU:O	1:A:445:VAL:HB	2.21	0.41

*Continued on next page...*

Continued from previous page...

Atom-1	Atom-2	Interatomic distance (Å)	Clash overlap (Å)
1:A:237:GLU:OE2	1:A:490:ALA:HB2	2.20	0.41
1:A:515:GLU:HA	1:A:515:GLU:OE2	2.20	0.41
1:B:295:LYS:CE	1:B:297:VAL:N	2.56	0.41
1:A:470:TYR:CE1	1:A:521:LEU:HD21	2.57	0.40
1:B:306:LYS:O	1:B:307:ALA:C	2.59	0.40
1:A:60:ILE:HA	1:A:61:PRO:HD3	1.83	0.40
1:A:251:HIS:NE2	1:A:314:PRO:CB	2.84	0.40
1:A:263:THR:O	1:A:267:MET:HG2	2.22	0.40
1:A:431:SER:HA	1:A:446:SER:O	2.21	0.40
1:B:127:ILE:HG23	1:B:128:ILE:N	2.36	0.40
1:B:307:ALA:HB2	1:B:385:ARG:CZ	2.51	0.40

All (1) symmetry-related close contacts are listed below. The label for Atom-2 includes the symmetry operator and encoded unit-cell translations to be applied.

Atom-1	Atom-2	Interatomic distance (Å)	Clash overlap (Å)
1:B:423:GLU:OE1	1:B:453:ARG:NH2[2_555]	2.09	0.11

## 5.3 Torsion angles [i](#)

### 5.3.1 Protein backbone [i](#)

In the following table, the Percentiles column shows the percent Ramachandran outliers of the chain as a percentile score with respect to all X-ray entries followed by that with respect to entries of similar resolution.

The Analysed column shows the number of residues for which the backbone conformation was analysed, and the total number of residues.

Mol	Chain	Analysed	Favoured	Allowed	Outliers	Percentiles
1	A	522/537 (97%)	497 (95%)	24 (5%)	1 (0%)	47 55
1	B	522/537 (97%)	504 (97%)	18 (3%)	0	100 100
All	All	1044/1074 (97%)	1001 (96%)	42 (4%)	1 (0%)	51 60

All (1) Ramachandran outliers are listed below:

Mol	Chain	Res	Type
1	A	505	GLY

### 5.3.2 Protein sidechains [i](#)

In the following table, the Percentiles column shows the percent sidechain outliers of the chain as a percentile score with respect to all X-ray entries followed by that with respect to entries of similar resolution.

The Analysed column shows the number of residues for which the sidechain conformation was analysed, and the total number of residues.

Mol	Chain	Analysed	Rotameric	Outliers	Percentiles	
1	A	416/425 (98%)	412 (99%)	4 (1%)	76	86
1	B	416/425 (98%)	406 (98%)	10 (2%)	49	62
All	All	832/850 (98%)	818 (98%)	14 (2%)	60	74

All (14) residues with a non-rotameric sidechain are listed below:

Mol	Chain	Res	Type
1	A	65	VAL
1	A	103	GLU
1	A	140	ILE
1	A	498	ARG
1	B	132	LEU
1	B	175	ASP
1	B	252	ASP
1	B	290	ASP
1	B	292	GLU
1	B	295	LYS
1	B	297	VAL
1	B	299	ARG
1	B	304	LEU
1	B	447	MET

Sometimes sidechains can be flipped to improve hydrogen bonding and reduce clashes. All (30) such sidechains are listed below:

Mol	Chain	Res	Type
1	A	121	HIS
1	A	137	ASN
1	A	161	HIS
1	A	205	ASN
1	A	227	GLN
1	A	251	HIS
1	A	257	HIS
1	A	305	GLN

*Continued on next page...*

*Continued from previous page...*

Mol	Chain	Res	Type
1	A	339	ASN
1	A	355	ASN
1	A	390	HIS
1	A	407	HIS
1	A	442	GLN
1	B	115	ASN
1	B	121	HIS
1	B	137	ASN
1	B	161	HIS
1	B	205	ASN
1	B	227	GLN
1	B	251	HIS
1	B	257	HIS
1	B	280	HIS
1	B	288	GLN
1	B	326	HIS
1	B	329	HIS
1	B	339	ASN
1	B	355	ASN
1	B	407	HIS
1	B	438	ASN
1	B	442	GLN

### 5.3.3 RNA ⓘ

There are no RNA molecules in this entry.

## 5.4 Non-standard residues in protein, DNA, RNA chains ⓘ

2 non-standard protein/DNA/RNA residues are modelled in this entry.

In the following table, the Counts columns list the number of bonds (or angles) for which Mogul statistics could be retrieved, the number of bonds (or angles) that are observed in the model and the number of bonds (or angles) that are defined in the Chemical Component Dictionary. The Link column lists molecule types, if any, to which the group is linked. The Z score for a bond length (or angle) is the number of standard deviations the observed value is removed from the expected value. A bond length (or angle) with  $|Z| > 2$  is considered an outlier worth inspection. RMSZ is the root-mean-square of all Z scores of the bond lengths (or angles).

Mol	Type	Chain	Res	Link	Bond lengths			Bond angles		
					Counts	RMSZ	# Z  > 2	Counts	RMSZ	# Z  > 2
1	MDO	B	152	1	12,13,14	2.52	6 (50%)	15,18,20	2.58	2 (13%)

Mol	Type	Chain	Res	Link	Bond lengths			Bond angles		
					Counts	RMSZ	# Z  > 2	Counts	RMSZ	# Z  > 2
1	MDO	A	152	1	12,13,14	2.42	4 (33%)	15,18,20	2.73	2 (13%)

In the following table, the Chirals column lists the number of chiral outliers, the number of chiral centers analysed, the number of these observed in the model and the number defined in the Chemical Component Dictionary. Similar counts are reported in the Torsion and Rings columns. '-' means no outliers of that kind were identified.

Mol	Type	Chain	Res	Link	Chirals	Torsions	Rings
1	MDO	B	152	1	-	2/4/23/24	0/1/1/1
1	MDO	A	152	1	-	2/4/23/24	0/1/1/1

All (10) bond length outliers are listed below:

Mol	Chain	Res	Type	Atoms	Z	Observed(Å)	Ideal(Å)
1	B	152	MDO	O2-C2	6.34	1.36	1.23
1	A	152	MDO	O2-C2	6.33	1.36	1.23
1	A	152	MDO	CA2-N2	-3.04	1.33	1.39
1	B	152	MDO	CA2-N2	-2.95	1.33	1.39
1	B	152	MDO	C2-N3	-2.84	1.33	1.39
1	A	152	MDO	C2-N3	-2.83	1.33	1.39
1	B	152	MDO	O3-C3	2.36	1.33	1.19
1	B	152	MDO	C1-N3	-2.10	1.33	1.37
1	A	152	MDO	C1-N3	-2.07	1.33	1.37
1	B	152	MDO	CA2-C2	-2.04	1.39	1.43

All (4) bond angle outliers are listed below:

Mol	Chain	Res	Type	Atoms	Z	Observed(°)	Ideal(°)
1	A	152	MDO	O2-C2-CA2	-7.64	126.67	130.96
1	B	152	MDO	O2-C2-CA2	-7.08	126.98	130.96
1	A	152	MDO	CA2-C2-N3	6.71	106.55	103.37
1	B	152	MDO	CA2-C2-N3	6.17	106.29	103.37

There are no chirality outliers.

All (4) torsion outliers are listed below:

Mol	Chain	Res	Type	Atoms
1	A	152	MDO	N2-C1-CA1-CB
1	B	152	MDO	N2-C1-CA1-CB
1	A	152	MDO	N3-C1-CA1-CB
1	B	152	MDO	N3-C1-CA1-CB

There are no ring outliers.

2 monomers are involved in 6 short contacts:

Mol	Chain	Res	Type	Clashes	Symm-Clashes
1	B	152	MDO	1	0
1	A	152	MDO	5	0

## 5.5 Carbohydrates [i](#)

There are no monosaccharides in this entry.

## 5.6 Ligand geometry [i](#)

2 ligands are modelled in this entry.

In the following table, the Counts columns list the number of bonds (or angles) for which Mogul statistics could be retrieved, the number of bonds (or angles) that are observed in the model and the number of bonds (or angles) that are defined in the Chemical Component Dictionary. The Link column lists molecule types, if any, to which the group is linked. The Z score for a bond length (or angle) is the number of standard deviations the observed value is removed from the expected value. A bond length (or angle) with  $|Z| > 2$  is considered an outlier worth inspection. RMSZ is the root-mean-square of all Z scores of the bond lengths (or angles).

Mol	Type	Chain	Res	Link	Bond lengths			Bond angles		
					Counts	RMSZ	# Z  > 2	Counts	RMSZ	# Z  > 2
2	TYR	A	600	-	12,13,13	0.66	0	16,17,17	0.81	0
2	TYR	B	600	-	12,13,13	0.66	0	16,17,17	1.05	2 (12%)

In the following table, the Chirals column lists the number of chiral outliers, the number of chiral centers analysed, the number of these observed in the model and the number defined in the Chemical Component Dictionary. Similar counts are reported in the Torsion and Rings columns. '-' means no outliers of that kind were identified.

Mol	Type	Chain	Res	Link	Chirals	Torsions	Rings
2	TYR	A	600	-	-	6/8/8/8	0/1/1/1
2	TYR	B	600	-	-	6/8/8/8	0/1/1/1

There are no bond length outliers.

All (2) bond angle outliers are listed below:

Mol	Chain	Res	Type	Atoms	Z	Observed(°)	Ideal(°)
2	B	600	TYR	OXT-C-CA	2.28	121.15	113.38

*Continued on next page...*

*Continued from previous page...*

Mol	Chain	Res	Type	Atoms	Z	Observed(°)	Ideal(°)
2	B	600	TYR	CG-CB-CA	-2.24	109.47	114.13

There are no chirality outliers.

All (12) torsion outliers are listed below:

Mol	Chain	Res	Type	Atoms
2	A	600	TYR	CA-CB-CG-CD2
2	A	600	TYR	CA-CB-CG-CD1
2	B	600	TYR	CA-CB-CG-CD1
2	B	600	TYR	CA-CB-CG-CD2
2	A	600	TYR	N-CA-CB-CG
2	B	600	TYR	C-CA-CB-CG
2	B	600	TYR	OXT-C-CA-N
2	B	600	TYR	O-C-CA-N
2	A	600	TYR	C-CA-CB-CG
2	B	600	TYR	N-CA-CB-CG
2	A	600	TYR	O-C-CA-N
2	A	600	TYR	OXT-C-CA-N

There are no ring outliers.

2 monomers are involved in 11 short contacts:

Mol	Chain	Res	Type	Clashes	Symm-Clashes
2	A	600	TYR	7	0
2	B	600	TYR	4	0

## 5.7 Other polymers [i](#)

There are no such residues in this entry.

## 5.8 Polymer linkage issues [i](#)

There are no chain breaks in this entry.

## 6 Fit of model and data

### 6.1 Protein, DNA and RNA chains

In the following table, the column labelled ‘#RSRZ > 2’ contains the number (and percentage) of RSRZ outliers, followed by percent RSRZ outliers for the chain as percentile scores relative to all X-ray entries and entries of similar resolution. The OWAB column contains the minimum, median, 95<sup>th</sup> percentile and maximum values of the occupancy-weighted average B-factor per residue. The column labelled ‘Q < 0.9’ lists the number of (and percentage) of residues with an average occupancy less than 0.9.

Mol	Chain	Analysed	<RSRZ>	#RSRZ>2	OWAB(Å <sup>2</sup> )	Q<0.9
1	A	526/537 (97%)	0.21	33 (6%) 20 19	24, 40, 70, 80	0
1	B	526/537 (97%)	0.03	24 (4%) 32 31	23, 38, 63, 90	0
All	All	1052/1074 (97%)	0.12	57 (5%) 25 24	23, 39, 69, 90	0

All (57) RSRZ outliers are listed below:

Mol	Chain	Res	Type	RSRZ
1	B	297	VAL	8.7
1	B	304	LEU	8.3
1	A	402	GLY	7.2
1	B	296	ASP	6.4
1	B	293	ALA	6.2
1	A	293	ALA	5.4
1	A	11	VAL	5.4
1	A	59	ASN	5.2
1	B	299	ARG	5.0
1	A	344	PHE	5.0
1	A	295	LYS	4.9
1	A	52	PHE	4.9
1	A	294	GLY	4.8
1	B	295	LYS	4.6
1	A	54	GLY	4.5
1	B	292	GLU	4.5
1	A	77	VAL	4.3
1	A	51	ILE	4.2
1	A	189	GLY	4.0
1	B	294	GLY	3.8
1	B	11	VAL	3.8
1	B	300	SER	3.8
1	A	57	GLU	3.7
1	B	298	GLN	3.6

*Continued on next page...*



*Continued from previous page...*

Mol	Chain	Res	Type	RSRZ
1	A	60	ILE	3.3
1	A	296	ASP	3.2
1	A	350	ILE	3.1
1	A	78	ASP	3.0
1	A	349	GLU	2.9
1	A	186	ALA	2.9
1	A	174	ARG	2.9
1	A	535	ASP	2.9
1	B	186	ALA	2.9
1	B	288	GLN	2.8
1	A	55	ILE	2.8
1	B	60	ILE	2.8
1	B	59	ASN	2.8
1	A	79	LYS	2.7
1	A	81	LYS	2.7
1	A	73	ILE	2.7
1	A	484	ASP	2.6
1	A	393	TYR	2.6
1	A	479	ILE	2.6
1	A	444	VAL	2.5
1	B	312	ALA	2.5
1	A	74	TYR	2.4
1	A	483	PHE	2.4
1	B	303	TYR	2.3
1	B	77	VAL	2.3
1	B	175	ASP	2.2
1	A	297	VAL	2.2
1	B	344	PHE	2.2
1	A	403	ASP	2.2
1	B	435	VAL	2.1
1	B	444	VAL	2.1
1	B	308	TYR	2.1
1	B	78	ASP	2.0

## 6.2 Non-standard residues in protein, DNA, RNA chains [i](#)

In the following table, the Atoms column lists the number of modelled atoms in the group and the number defined in the chemical component dictionary. The B-factors column lists the minimum, median, 95<sup>th</sup> percentile and maximum values of B factors of atoms in the group. The column labelled 'Q< 0.9' lists the number of atoms with occupancy less than 0.9.

Mol	Type	Chain	Res	Atoms	RSCC	RSR	B-factors( $\text{\AA}^2$ )	Q<0.9
1	MDO	B	152	13/14	0.86	0.22	36,40,44,50	0
1	MDO	A	152	13/14	0.87	0.22	37,41,45,50	0

### 6.3 Carbohydrates [i](#)

There are no monosaccharides in this entry.

### 6.4 Ligands [i](#)

In the following table, the Atoms column lists the number of modelled atoms in the group and the number defined in the chemical component dictionary. The B-factors column lists the minimum, median, 95<sup>th</sup> percentile and maximum values of B factors of atoms in the group. The column labelled 'Q< 0.9' lists the number of atoms with occupancy less than 0.9.

Mol	Type	Chain	Res	Atoms	RSCC	RSR	B-factors( $\text{\AA}^2$ )	Q<0.9
2	TYR	B	600	13/13	0.75	0.58	24,26,27,28	13
2	TYR	A	600	13/13	0.79	0.71	31,33,35,35	13

### 6.5 Other polymers [i](#)

There are no such residues in this entry.