



# wwPDB X-ray Structure Validation Summary Report ⓘ

Sep 20, 2023 – 02:27 AM EDT

PDB ID : 5J63  
Title : Crystal Structure of the N-terminal N-formyltransferase Domain (residues 1-306) of Escherichia coli Arna in Complex with UDP-Ara4N and Folinic Acid  
Authors : Thoden, J.B.; Genthe, N.A.; Holden, H.M.  
Deposited on : 2016-04-04  
Resolution : 2.50 Å(reported)

This is a wwPDB X-ray Structure Validation Summary Report for a publicly released PDB entry.

We welcome your comments at [validation@mail.wwpdb.org](mailto:validation@mail.wwpdb.org)

A user guide is available at

<https://www.wwpdb.org/validation/2017/XrayValidationReportHelp>

with specific help available everywhere you see the ⓘ symbol.

The types of validation reports are described at

<http://www.wwpdb.org/validation/2017/FAQs#types>.

---

The following versions of software and data (see [references ⓘ](#)) were used in the production of this report:

MolProbity : 4.02b-467  
Mogul : 1.8.5 (274361), CSD as541be (2020)  
Xtriage (Phenix) : 1.13  
EDS : 2.35.1  
buster-report : 1.1.7 (2018)  
Percentile statistics : 20191225.v01 (using entries in the PDB archive December 25th 2019)  
Refmac : 5.8.0158  
CCP4 : 7.0.044 (Gargrove)  
Ideal geometry (proteins) : Engh & Huber (2001)  
Ideal geometry (DNA, RNA) : Parkinson et al. (1996)  
Validation Pipeline (wwPDB-VP) : 2.35.1

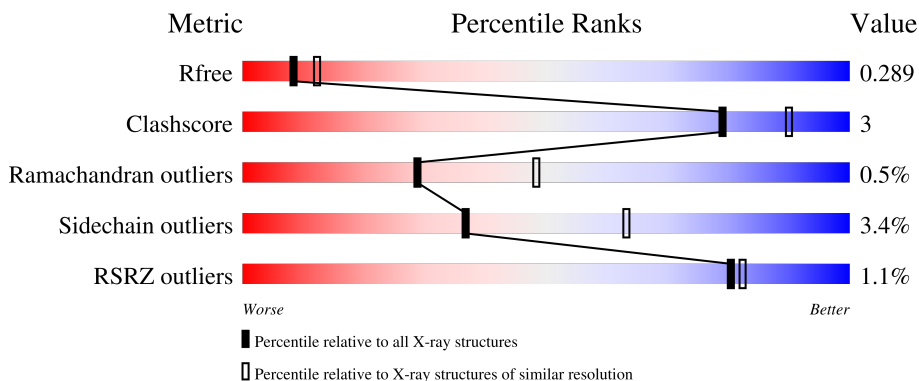
# 1 Overall quality at a glance

The following experimental techniques were used to determine the structure:

*X-RAY DIFFRACTION*

The reported resolution of this entry is 2.50 Å.

Percentile scores (ranging between 0-100) for global validation metrics of the entry are shown in the following graphic. The table shows the number of entries on which the scores are based.



Metric	Whole archive (#Entries)	Similar resolution (#Entries, resolution range(Å))
$R_{free}$	130704	4661 (2.50-2.50)
Clashscore	141614	5346 (2.50-2.50)
Ramachandran outliers	138981	5231 (2.50-2.50)
Sidechain outliers	138945	5233 (2.50-2.50)
RSRZ outliers	127900	4559 (2.50-2.50)

The table below summarises the geometric issues observed across the polymeric chains and their fit to the electron density. The red, orange, yellow and green segments of the lower bar indicate the fraction of residues that contain outliers for  $\geq 3$ , 2, 1 and 0 types of geometric quality criteria respectively. A grey segment represents the fraction of residues that are not modelled. The numeric value for each fraction is indicated below the corresponding segment, with a dot representing fractions  $\leq 5\%$ . The upper red bar (where present) indicates the fraction of residues that have poor fit to the electron density. The numeric value is given above the bar.

Mol	Chain	Length	Quality of chain
1	A	308	
1	B	308	
1	C	308	
1	D	308	

## 2 Entry composition [i](#)

There are 4 unique types of molecules in this entry. The entry contains 9830 atoms, of which 0 are hydrogens and 0 are deuteriums.

In the tables below, the ZeroOcc column contains the number of atoms modelled with zero occupancy, the AltConf column contains the number of residues with at least one atom in alternate conformation and the Trace column contains the number of residues modelled with at most 2 atoms.

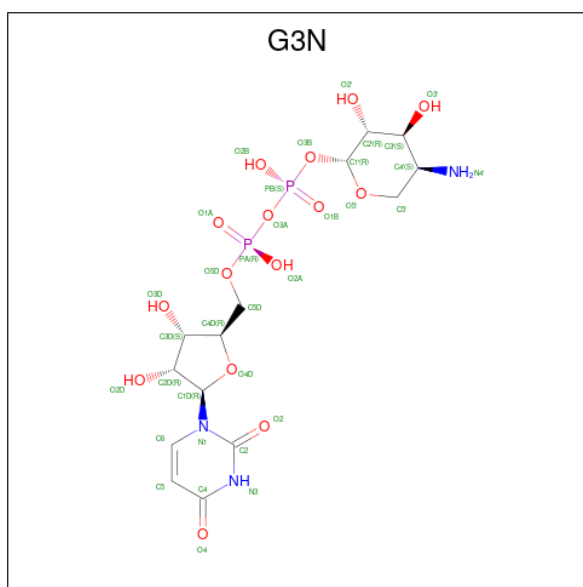
- Molecule 1 is a protein called Bifunctional polymyxin resistance protein ArnA.

Mol	Chain	Residues	Atoms					ZeroOcc	AltConf	Trace
			Total	C	N	O	S			
1	A	302	2347	1501	418	418	10	0	5	0
1	B	301	2331	1488	415	418	10	0	3	0
1	C	285	2223	1426	394	395	8	0	3	0
1	D	301	2320	1482	414	414	10	0	2	0

There are 8 discrepancies between the modelled and reference sequences:

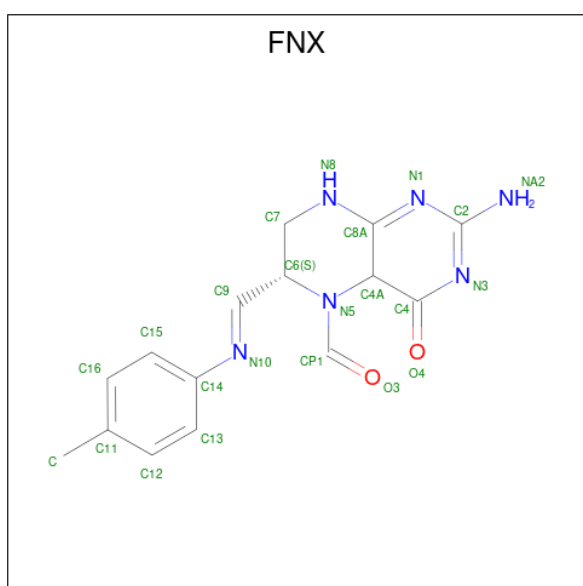
Chain	Residue	Modelled	Actual	Comment	Reference
A	-1	GLY	-	expression tag	UNP F4SGI5
A	0	HIS	-	expression tag	UNP F4SGI5
B	-1	GLY	-	expression tag	UNP F4SGI5
B	0	HIS	-	expression tag	UNP F4SGI5
C	-1	GLY	-	expression tag	UNP F4SGI5
C	0	HIS	-	expression tag	UNP F4SGI5
D	-1	GLY	-	expression tag	UNP F4SGI5
D	0	HIS	-	expression tag	UNP F4SGI5

- Molecule 2 is (2R,3R,4S,5S)-5-amino-3,4-dihydroxytetrahydro-2H-pyran-2-yl [(2R,3S,4R,5R)-5-(2,4-dioxo-3,4-dihydropyrimidin-1(2H)-yl)-3,4-dihydroxytetrahydrofuran-2-yl]methyl dihydrogen diphosphate (three-letter code: G3N) (formula: C<sub>14</sub>H<sub>23</sub>N<sub>3</sub>O<sub>15</sub>P<sub>2</sub>).



Mol	Chain	Residues	Atoms				ZeroOcc	AltConf	
			Total	C	N	O			P
2	A	1	Total	C	N	O	P	0	0
			34	14	3	15	2		
2	B	1	Total	C	N	O	P	0	0
			34	14	3	15	2		
2	C	1	Total	C	N	O	P	0	0
			34	14	3	15	2		
2	D	1	Total	C	N	O	P	0	0
			34	14	3	15	2		

- Molecule 3 is (4*a*S,6*S*)-2-amino-6-[(*E*)-[(4-methylphenyl)imino]methyl]-4-oxo-4,6,7,8-tetrahydropteridine-5(4*a*H)-carbaldehyde (three-letter code: FNX) (formula: C<sub>15</sub>H<sub>16</sub>N<sub>6</sub>O<sub>2</sub>).



Mol	Chain	Residues	Atoms				ZeroOcc	AltConf
3	A	1	Total	C	N	O	0	0
			23	15	6	2		
3	B	1	Total	C	N	O	0	0
			23	15	6	2		
3	C	1	Total	C	N	O	0	0
			23	15	6	2		
3	D	1	Total	C	N	O	0	0
			23	15	6	2		

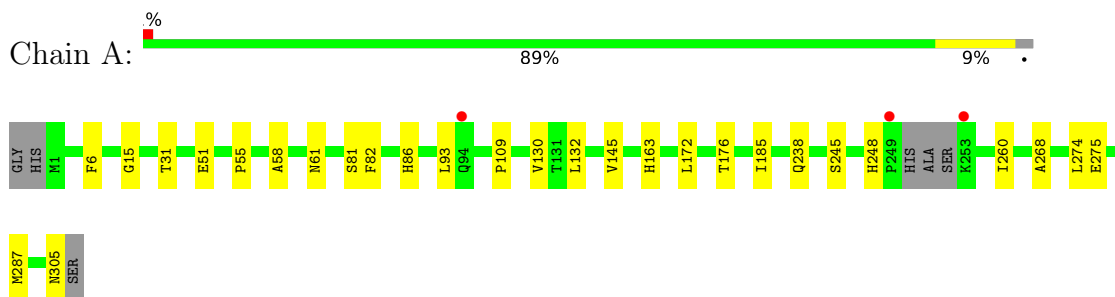
- Molecule 4 is water.

Mol	Chain	Residues	Atoms		ZeroOcc	AltConf
4	A	105	Total	O	0	0
			105	105		
4	B	89	Total	O	0	0
			89	89		
4	C	107	Total	O	0	0
			107	107		
4	D	80	Total	O	0	0
			80	80		

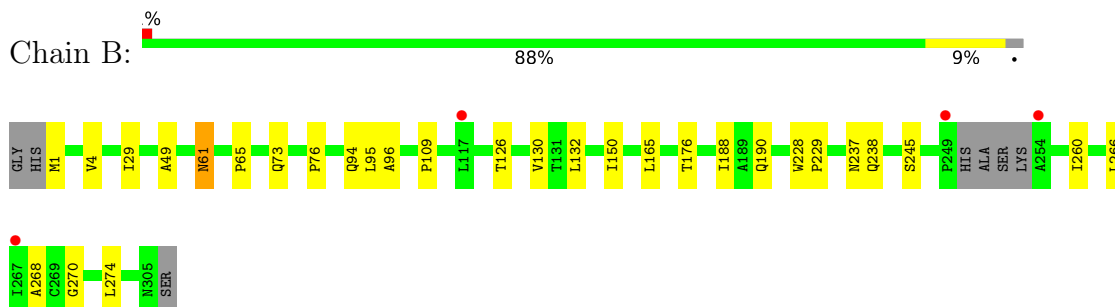
### 3 Residue-property plots [i](#)

These plots are drawn for all protein, RNA, DNA and oligosaccharide chains in the entry. The first graphic for a chain summarises the proportions of the various outlier classes displayed in the second graphic. The second graphic shows the sequence view annotated by issues in geometry and electron density. Residues are color-coded according to the number of geometric quality criteria for which they contain at least one outlier: green = 0, yellow = 1, orange = 2 and red = 3 or more. A red dot above a residue indicates a poor fit to the electron density ( $RSRZ > 2$ ). Stretches of 2 or more consecutive residues without any outlier are shown as a green connector. Residues present in the sample, but not in the model, are shown in grey.

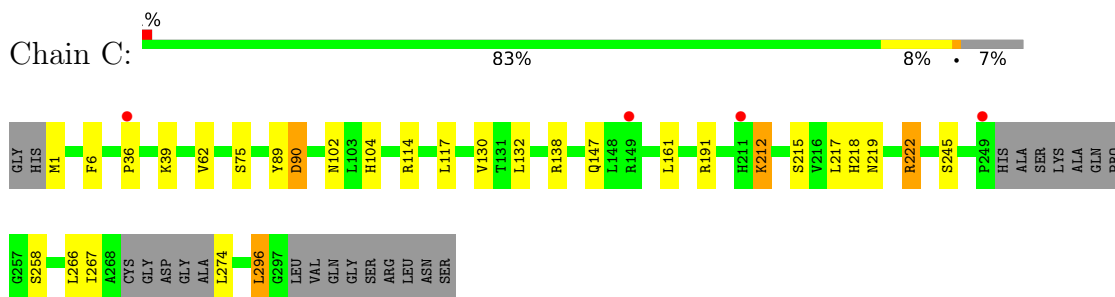
- Molecule 1: Bifunctional polymyxin resistance protein ArnA



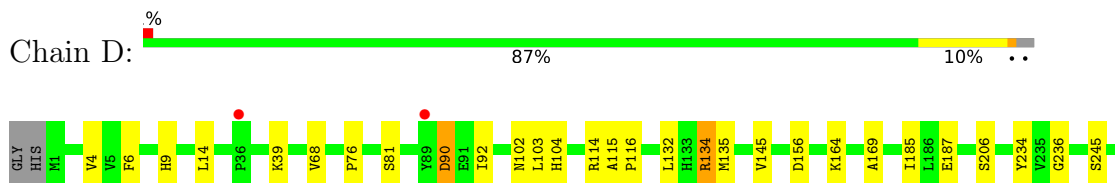
- Molecule 1: Bifunctional polymyxin resistance protein ArnA



- Molecule 1: Bifunctional polymyxin resistance protein ArnA



- Molecule 1: Bifunctional polymyxin resistance protein ArnA



P249	HIS	C256
	ALA	
	SER	
	LYS	
	ALA	
		S261
		L266
		L274
		D283
		V299
		S306

## 4 Data and refinement statistics

Property	Value	Source
Space group	P 1	Depositor
Cell constants a, b, c, $\alpha$ , $\beta$ , $\gamma$	75.99Å 76.21Å 84.85Å 89.94° 63.78° 61.54°	Depositor
Resolution (Å)	20.00 – 2.50 19.82 – 2.50	Depositor EDS
% Data completeness (in resolution range)	91.2 (20.00-2.50) 91.4 (19.82-2.50)	Depositor EDS
$R_{merge}$	0.06	Depositor
$R_{sym}$	0.06	Depositor
$\langle I/\sigma(I) \rangle$ <sup>1</sup>	13.97 (at 2.50Å)	Xtriage
Refinement program	REFMAC 5.8.0124	Depositor
R, $R_{free}$	0.212 , 0.284 0.220 , 0.289	Depositor DCC
$R_{free}$ test set	2253 reflections (4.93%)	wwPDB-VP
Wilson B-factor (Å <sup>2</sup> )	30.8	Xtriage
Anisotropy	0.144	Xtriage
Bulk solvent $k_{sol}$ (e/Å <sup>3</sup> ), $B_{sol}$ (Å <sup>2</sup> )	0.35 , 40.6	EDS
L-test for twinning <sup>2</sup>	$\langle  L  \rangle = 0.46$ , $\langle L^2 \rangle = 0.29$	Xtriage
Estimated twinning fraction	0.017 for -h+k,-h,-h+k+l 0.017 for -k,h-k,-h+l 0.036 for h,h-k,h-l 0.024 for -h+k,k,-l 0.024 for -k,-h,h-k-l	Xtriage
$F_o, F_c$ correlation	0.91	EDS
Total number of atoms	9830	wwPDB-VP
Average B, all atoms (Å <sup>2</sup> )	34.0	wwPDB-VP

Xtriage's analysis on translational NCS is as follows: *The largest off-origin peak in the Patterson function is 15.76% of the height of the origin peak. No significant pseudotranslation is detected.*

<sup>1</sup>Intensities estimated from amplitudes.

<sup>2</sup>Theoretical values of  $\langle |L| \rangle$ ,  $\langle L^2 \rangle$  for acentric reflections are 0.5, 0.333 respectively for untwinned datasets, and 0.375, 0.2 for perfectly twinned datasets.



## 5 Model quality [i](#)

### 5.1 Standard geometry [i](#)

Bond lengths and bond angles in the following residue types are not validated in this section: G3N, FNX

The Z score for a bond length (or angle) is the number of standard deviations the observed value is removed from the expected value. A bond length (or angle) with  $|Z| > 5$  is considered an outlier worth inspection. RMSZ is the root-mean-square of all Z scores of the bond lengths (or angles).

Mol	Chain	Bond lengths		Bond angles	
		RMSZ	# Z  >5	RMSZ	# Z  >5
1	A	0.67	1/2419 (0.0%)	0.80	0/3292
1	B	0.63	0/2397	0.78	0/3264
1	C	0.64	0/2287	0.80	2/3112 (0.1%)
1	D	0.63	1/2383 (0.0%)	0.80	1/3245 (0.0%)
All	All	0.64	2/9486 (0.0%)	0.80	3/12913 (0.0%)

All (2) bond length outliers are listed below:

Mol	Chain	Res	Type	Atoms	Z	Observed(Å)	Ideal(Å)
1	D	234	TYR	CB-CG	-5.12	1.44	1.51
1	A	51	GLU	CG-CD	5.12	1.59	1.51

All (3) bond angle outliers are listed below:

Mol	Chain	Res	Type	Atoms	Z	Observed(°)	Ideal(°)
1	C	296	LEU	CA-CB-CG	6.75	130.81	115.30
1	C	222	ARG	NE-CZ-NH1	5.98	123.29	120.30
1	D	114	ARG	NE-CZ-NH2	-5.33	117.63	120.30

There are no chirality outliers.

There are no planarity outliers.

### 5.2 Too-close contacts [i](#)

In the following table, the Non-H and H(model) columns list the number of non-hydrogen atoms and hydrogen atoms in the chain respectively. The H(added) column lists the number of hydrogen atoms added and optimized by MolProbity. The Clashes column lists the number of clashes within the asymmetric unit, whereas Symm-Clashes lists symmetry-related clashes.

Mol	Chain	Non-H	H(model)	H(added)	Clashes	Symm-Clashes
1	A	2347	0	2362	15	0
1	B	2331	0	2328	13	0
1	C	2223	0	2227	13	0
1	D	2320	0	2316	14	0
2	A	34	0	0	1	0
2	B	34	0	0	0	0
2	C	34	0	0	2	0
2	D	34	0	0	0	0
3	A	23	0	0	1	0
3	B	23	0	0	0	0
3	C	23	0	0	0	0
3	D	23	0	0	0	0
4	A	105	0	0	2	0
4	B	89	0	0	0	0
4	C	107	0	0	1	0
4	D	80	0	0	0	0
All	All	9830	0	9233	52	0

The all-atom clashscore is defined as the number of clashes found per 1000 atoms (including hydrogen atoms). The all-atom clashscore for this structure is 3.

The worst 5 of 52 close contacts within the same asymmetric unit are listed below, sorted by their clash magnitude.

Atom-1	Atom-2	Interatomic distance (Å)	Clash overlap (Å)
1:A:130:VAL:HG23	1:A:172:LEU:HD12	1.65	0.78
1:A:145:VAL:HG13	1:A:185:ILE:HG23	1.75	0.69
1:B:132:LEU:HD23	1:B:176:THR:HG21	1.77	0.67
1:C:219:ASN:ND2	4:C:501:HOH:O	2.21	0.63
1:A:248:HIS:NE2	1:A:275:GLU:OE1	2.37	0.57

There are no symmetry-related clashes.

## 5.3 Torsion angles [i](#)

### 5.3.1 Protein backbone [i](#)

In the following table, the Percentiles column shows the percent Ramachandran outliers of the chain as a percentile score with respect to all X-ray entries followed by that with respect to entries of similar resolution.

The Analysed column shows the number of residues for which the backbone conformation was analysed, and the total number of residues.

Mol	Chain	Analysed	Favoured	Allowed	Outliers	Percentiles	
1	A	303/308 (98%)	291 (96%)	12 (4%)	0	100	100
1	B	300/308 (97%)	279 (93%)	18 (6%)	3 (1%)	15	28
1	C	282/308 (92%)	270 (96%)	11 (4%)	1 (0%)	34	54
1	D	299/308 (97%)	280 (94%)	17 (6%)	2 (1%)	22	39
All	All	1184/1232 (96%)	1120 (95%)	58 (5%)	6 (0%)	29	48

5 of 6 Ramachandran outliers are listed below:

Mol	Chain	Res	Type
1	C	90	ASP
1	D	90	ASP
1	B	95	LEU
1	D	236	GLY
1	B	65	PRO

### 5.3.2 Protein sidechains [i](#)

In the following table, the Percentiles column shows the percent sidechain outliers of the chain as a percentile score with respect to all X-ray entries followed by that with respect to entries of similar resolution.

The Analysed column shows the number of residues for which the sidechain conformation was analysed, and the total number of residues.

Mol	Chain	Analysed	Rotameric	Outliers	Percentiles	
1	A	245/244 (100%)	241 (98%)	4 (2%)	62	84
1	B	242/244 (99%)	235 (97%)	7 (3%)	42	69
1	C	231/244 (95%)	219 (95%)	12 (5%)	23	44
1	D	240/244 (98%)	231 (96%)	9 (4%)	33	58
All	All	958/976 (98%)	926 (97%)	32 (3%)	37	64

5 of 32 residues with a non-rotameric sidechain are listed below:

Mol	Chain	Res	Type
1	D	206	SER
1	D	261	SER
1	C	39	LYS
1	C	1	MET
1	D	266	LEU

Sometimes sidechains can be flipped to improve hydrogen bonding and reduce clashes. 5 of 15 such sidechains are listed below:

Mol	Chain	Res	Type
1	B	61	ASN
1	C	294	GLN
1	B	64	HIS
1	D	211	HIS
1	B	171	GLN

### 5.3.3 RNA [i](#)

There are no RNA molecules in this entry.

### 5.4 Non-standard residues in protein, DNA, RNA chains [i](#)

There are no non-standard protein/DNA/RNA residues in this entry.

### 5.5 Carbohydrates [i](#)

There are no monosaccharides in this entry.

### 5.6 Ligand geometry [i](#)

8 ligands are modelled in this entry.

In the following table, the Counts columns list the number of bonds (or angles) for which Mogul statistics could be retrieved, the number of bonds (or angles) that are observed in the model and the number of bonds (or angles) that are defined in the Chemical Component Dictionary. The Link column lists molecule types, if any, to which the group is linked. The Z score for a bond length (or angle) is the number of standard deviations the observed value is removed from the expected value. A bond length (or angle) with  $|Z| > 2$  is considered an outlier worth inspection. RMSZ is the root-mean-square of all Z scores of the bond lengths (or angles).

Mol	Type	Chain	Res	Link	Bond lengths			Bond angles		
					Counts	RMSZ	# Z  > 2	Counts	RMSZ	# Z  > 2
2	G3N	B	401	-	33,36,36	1.64	6 (18%)	47,55,55	1.89	11 (23%)
2	G3N	D	401	-	33,36,36	1.54	7 (21%)	47,55,55	1.76	9 (19%)
3	FNX	A	402	-	17,25,25	1.66	2 (11%)	23,35,35	1.36	2 (8%)
2	G3N	C	401	-	33,36,36	1.65	8 (24%)	47,55,55	1.59	8 (17%)
3	FNX	C	402	-	17,25,25	1.62	3 (17%)	23,35,35	1.46	4 (17%)
3	FNX	B	402	-	17,25,25	1.57	3 (17%)	23,35,35	1.38	3 (13%)

Mol	Type	Chain	Res	Link	Bond lengths			Bond angles		
					Counts	RMSZ	# Z  > 2	Counts	RMSZ	# Z  > 2
2	G3N	A	401	-	33,36,36	1.71	8 (24%)	47,55,55	1.83	12 (25%)
3	FNX	D	402	-	17,25,25	1.67	3 (17%)	23,35,35	1.43	4 (17%)

In the following table, the Chirals column lists the number of chiral outliers, the number of chiral centers analysed, the number of these observed in the model and the number defined in the Chemical Component Dictionary. Similar counts are reported in the Torsion and Rings columns. '-' means no outliers of that kind were identified.

Mol	Type	Chain	Res	Link	Chirals	Torsions	Rings
2	G3N	B	401	-	-	3/21/54/54	0/3/3/3
2	G3N	D	401	-	-	2/21/54/54	0/3/3/3
3	FNX	A	402	-	-	0/5/36/36	0/2/3/3
2	G3N	C	401	-	-	3/21/54/54	0/3/3/3
3	FNX	C	402	-	-	0/5/36/36	0/2/3/3
3	FNX	B	402	-	-	0/5/36/36	0/2/3/3
2	G3N	A	401	-	-	2/21/54/54	0/3/3/3
3	FNX	D	402	-	-	0/5/36/36	0/2/3/3

The worst 5 of 40 bond length outliers are listed below:

Mol	Chain	Res	Type	Atoms	Z	Observed(Å)	Ideal(Å)
2	A	401	G3N	C4-N3	-4.62	1.30	1.38
3	D	402	FNX	CP1-N5	-4.49	1.28	1.35
2	C	401	G3N	C4-N3	-4.35	1.30	1.38
3	A	402	FNX	C4A-N5	-4.24	1.41	1.47
2	B	401	G3N	C4-N3	-4.14	1.31	1.38

The worst 5 of 53 bond angle outliers are listed below:

Mol	Chain	Res	Type	Atoms	Z	Observed(°)	Ideal(°)
2	B	401	G3N	N3-C2-N1	6.45	123.46	114.89
2	A	401	G3N	N3-C2-N1	5.62	122.35	114.89
2	B	401	G3N	C4-N3-C2	-5.25	119.66	126.58
2	C	401	G3N	N3-C2-N1	4.86	121.34	114.89
2	A	401	G3N	C4-N3-C2	-4.85	120.19	126.58

There are no chirality outliers.

5 of 10 torsion outliers are listed below:

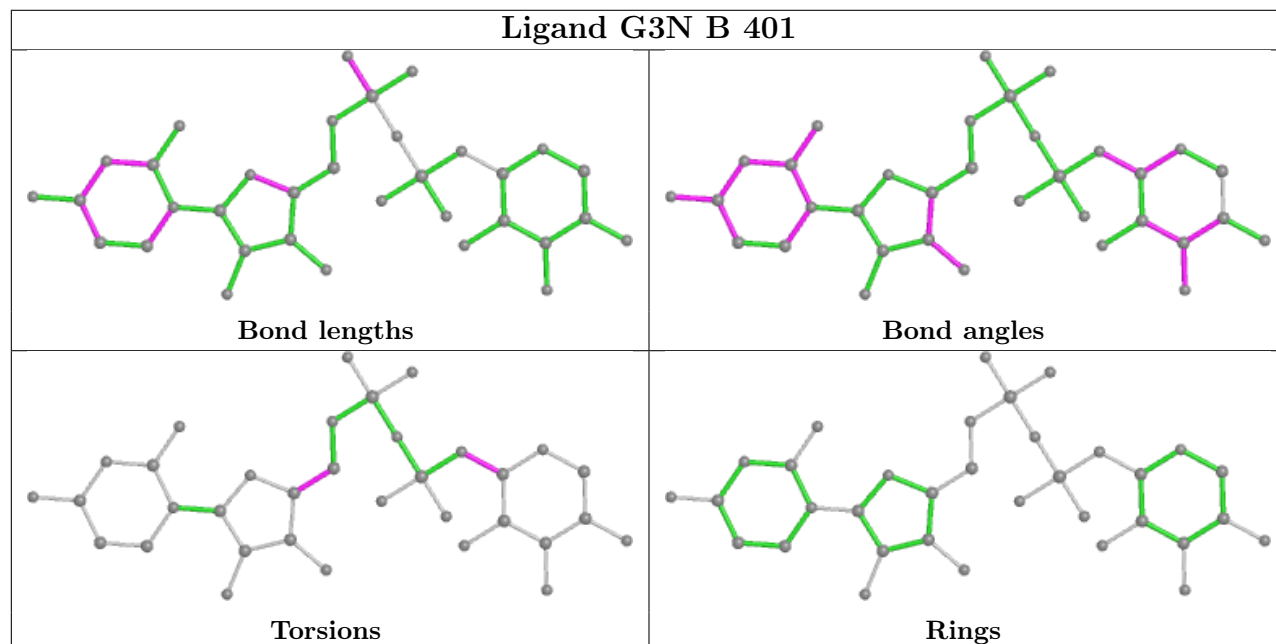
Mol	Chain	Res	Type	Atoms
2	A	401	G3N	O5'-C1'-O3B-PB
2	B	401	G3N	O5'-C1'-O3B-PB
2	B	401	G3N	C3D-C4D-C5D-O5D
2	B	401	G3N	O4D-C4D-C5D-O5D
2	C	401	G3N	O5'-C1'-O3B-PB

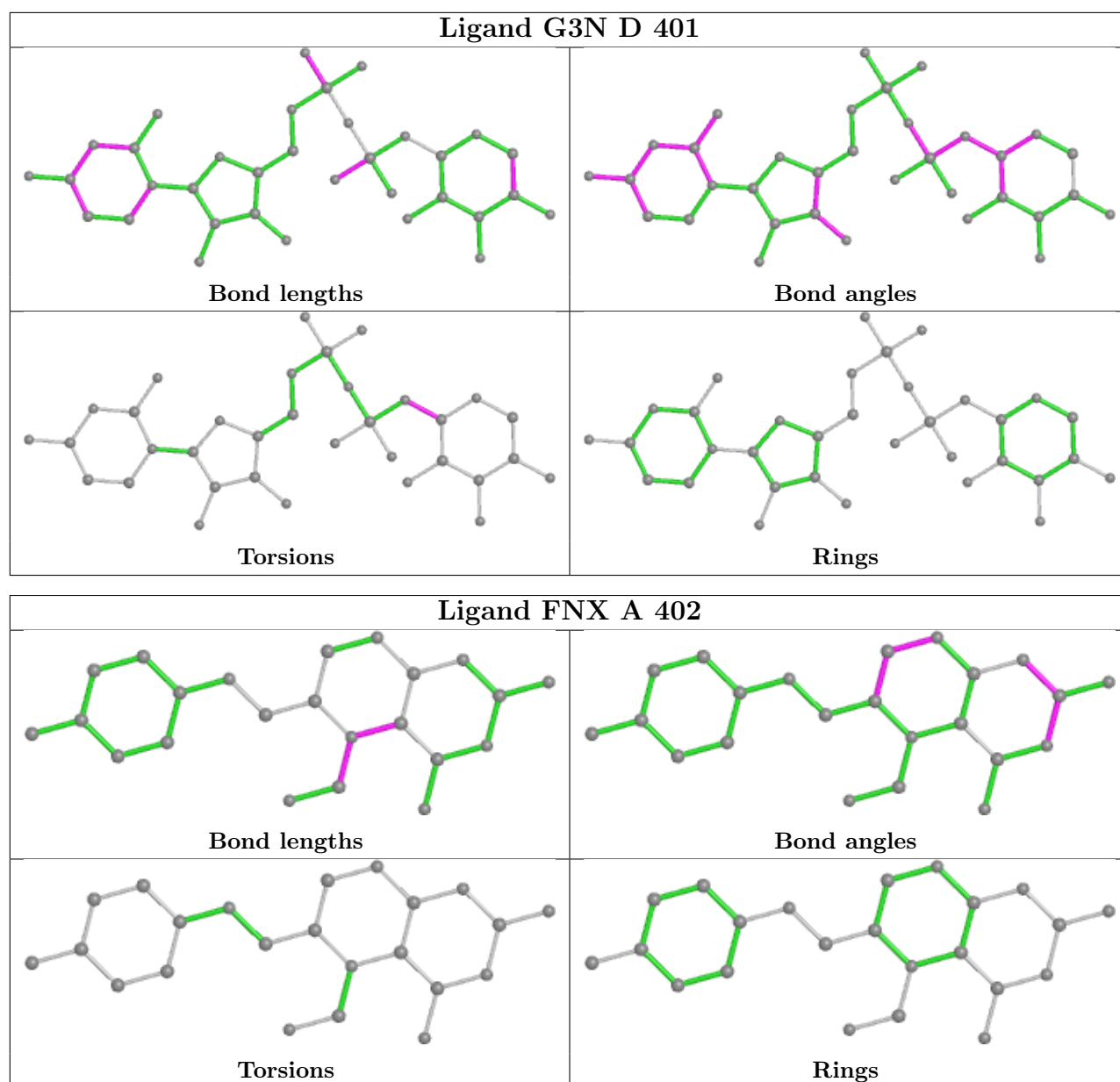
There are no ring outliers.

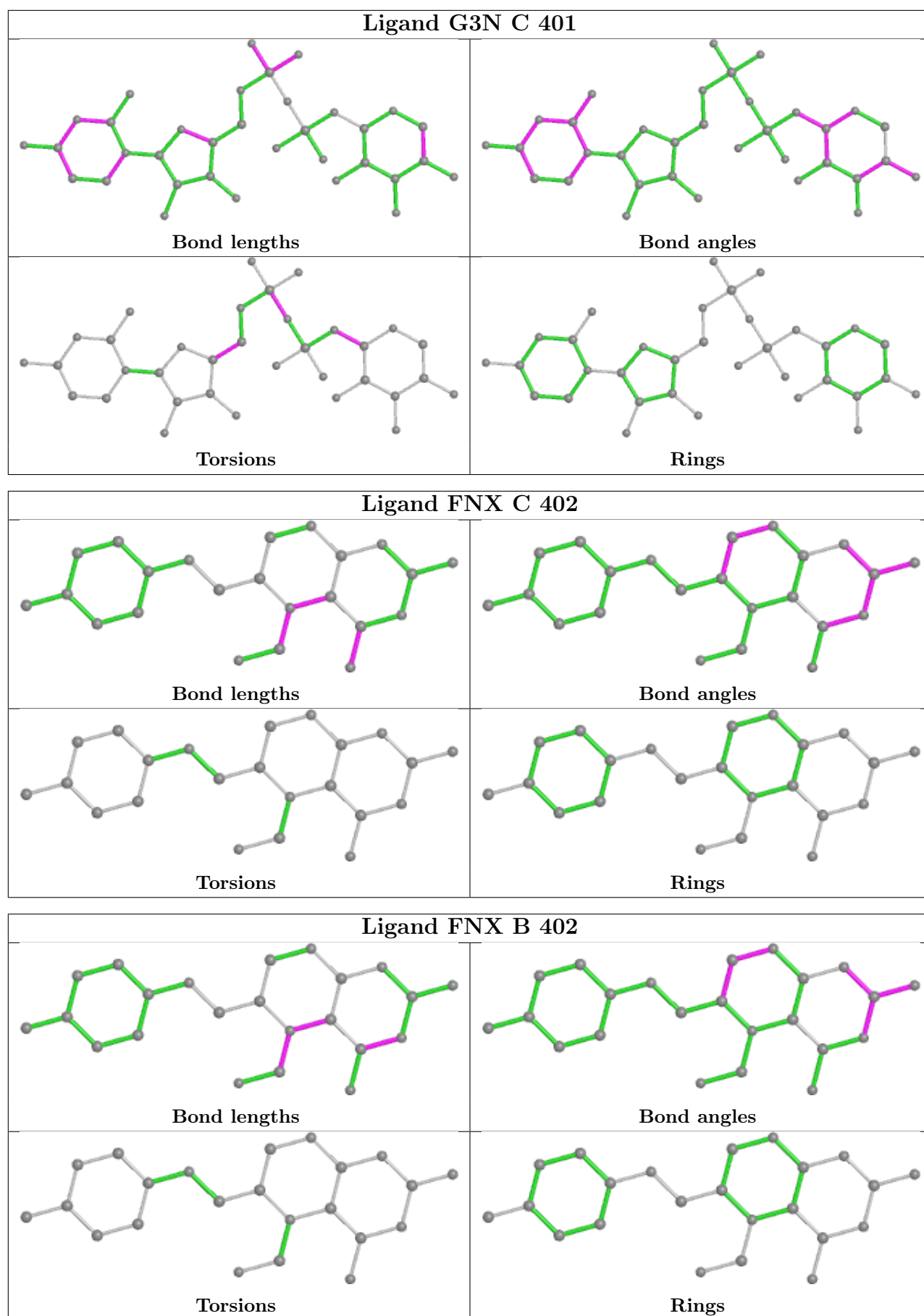
3 monomers are involved in 4 short contacts:

Mol	Chain	Res	Type	Clashes	Symm-Clashes
3	A	402	FNX	1	0
2	C	401	G3N	2	0
2	A	401	G3N	1	0

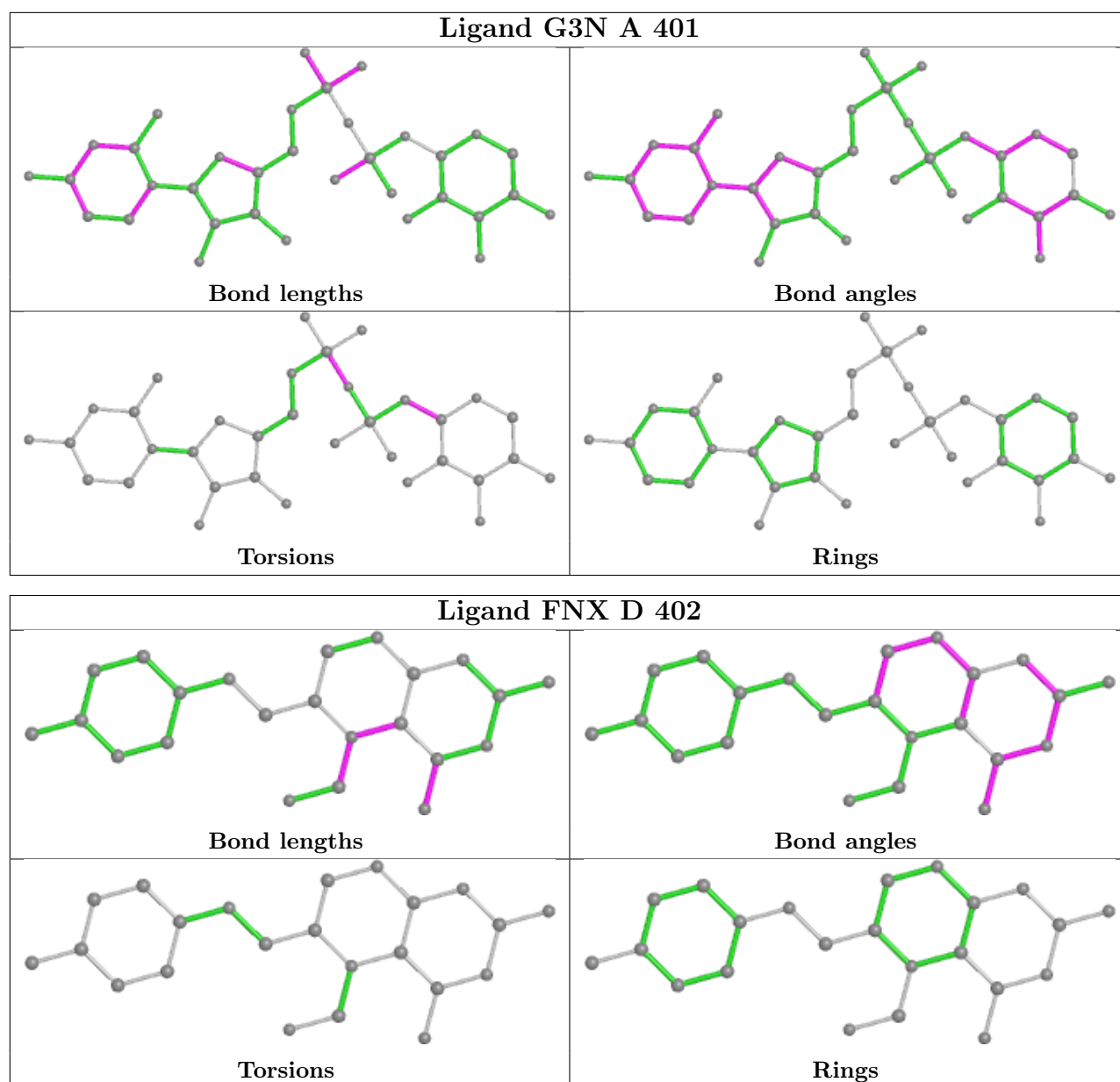
The following is a two-dimensional graphical depiction of Mogul quality analysis of bond lengths, bond angles, torsion angles, and ring geometry for all instances of the Ligand of Interest. In addition, ligands with molecular weight > 250 and outliers as shown on the validation Tables will also be included. For torsion angles, if less than 5% of the Mogul distribution of torsion angles is within 10 degrees of the torsion angle in question, then that torsion angle is considered an outlier. Any bond that is central to one or more torsion angles identified as an outlier by Mogul will be highlighted in the graph. For rings, the root-mean-square deviation (RMSD) between the ring in question and similar rings identified by Mogul is calculated over all ring torsion angles. If the average RMSD is greater than 60 degrees and the minimal RMSD between the ring in question and any Mogul-identified rings is also greater than 60 degrees, then that ring is considered an outlier. The outliers are highlighted in purple. The color gray indicates Mogul did not find sufficient equivalents in the CSD to analyse the geometry.











## 5.7 Other polymers [i](#)

There are no such residues in this entry.

## 5.8 Polymer linkage issues [i](#)

There are no chain breaks in this entry.

## 6 Fit of model and data [i](#)

### 6.1 Protein, DNA and RNA chains [i](#)

In the following table, the column labelled ‘#RSRZ> 2’ contains the number (and percentage) of RSRZ outliers, followed by percent RSRZ outliers for the chain as percentile scores relative to all X-ray entries and entries of similar resolution. The OWAB column contains the minimum, median, 95<sup>th</sup> percentile and maximum values of the occupancy-weighted average B-factor per residue. The column labelled ‘Q< 0.9’ lists the number of (and percentage) of residues with an average occupancy less than 0.9.

Mol	Chain	Analysed	<RSRZ>	#RSRZ>2	OWAB(Å <sup>2</sup> )	Q<0.9
1	A	302/308 (98%)	-0.21	3 (0%) 82 84	16, 30, 51, 75	1 (0%)
1	B	301/308 (97%)	-0.07	4 (1%) 77 79	18, 35, 59, 77	1 (0%)
1	C	285/308 (92%)	-0.18	4 (1%) 75 77	17, 32, 56, 77	1 (0%)
1	D	301/308 (97%)	-0.20	2 (0%) 87 89	16, 33, 55, 75	1 (0%)
All	All	1189/1232 (96%)	-0.16	13 (1%) 80 82	16, 33, 55, 77	4 (0%)

The worst 5 of 13 RSRZ outliers are listed below:

Mol	Chain	Res	Type	RSRZ
1	A	249	PRO	4.2
1	D	89	TYR	2.9
1	C	211	HIS	2.6
1	B	267	ILE	2.4
1	C	36	PRO	2.4

### 6.2 Non-standard residues in protein, DNA, RNA chains [i](#)

There are no non-standard protein/DNA/RNA residues in this entry.

### 6.3 Carbohydrates [i](#)

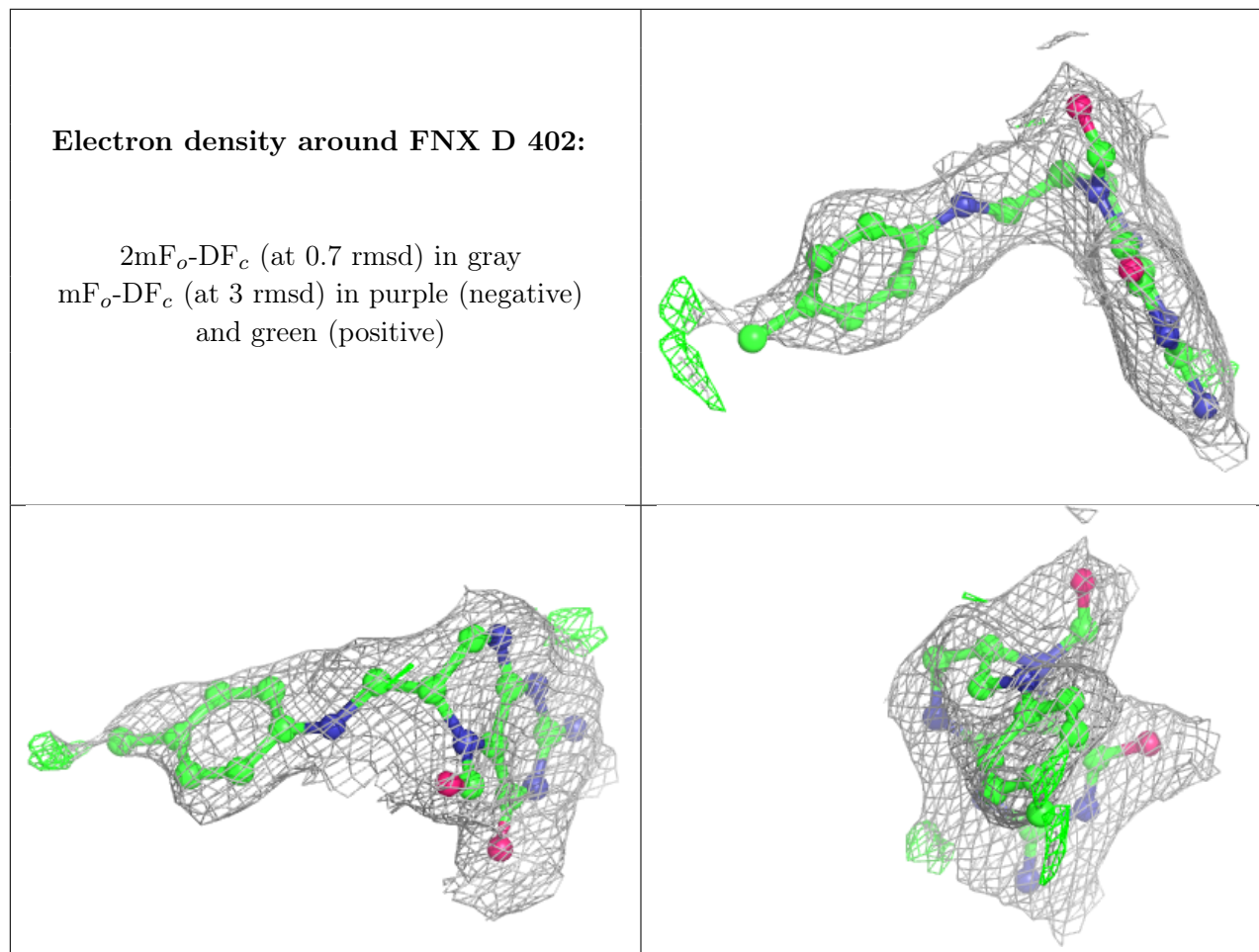
There are no monosaccharides in this entry.

### 6.4 Ligands [i](#)

In the following table, the Atoms column lists the number of modelled atoms in the group and the number defined in the chemical component dictionary. The B-factors column lists the minimum, median, 95<sup>th</sup> percentile and maximum values of B factors of atoms in the group. The column labelled ‘Q< 0.9’ lists the number of atoms with occupancy less than 0.9.

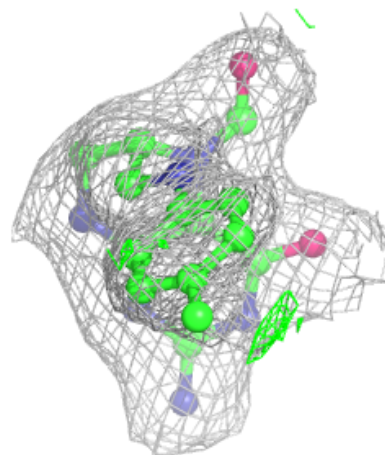
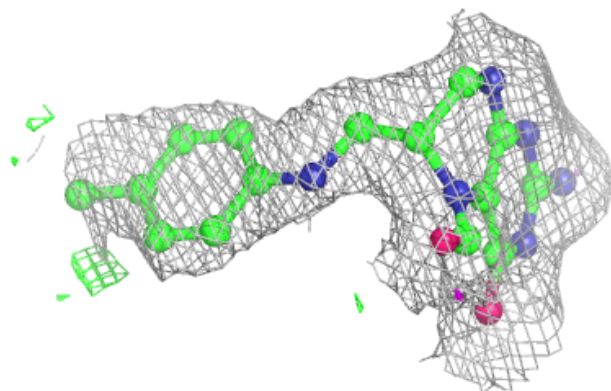
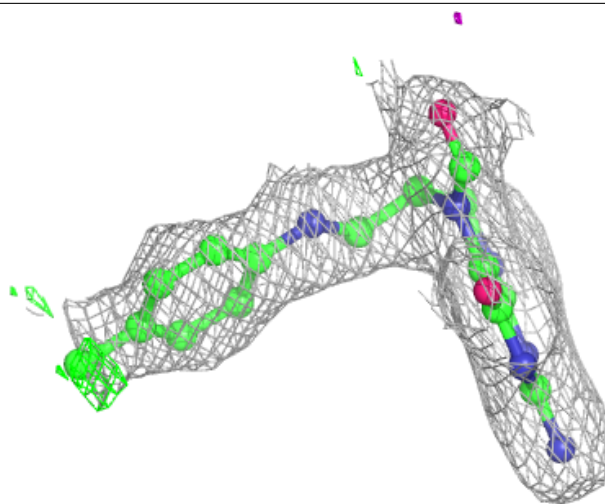
Mol	Type	Chain	Res	Atoms	RSCC	RSR	B-factors( $\text{\AA}^2$ )	Q<0.9
3	FNX	D	402	23/23	0.86	0.17	37,41,51,51	0
3	FNX	C	402	23/23	0.90	0.14	26,28,38,45	0
3	FNX	A	402	23/23	0.91	0.13	24,26,34,37	0
3	FNX	B	402	23/23	0.92	0.15	29,33,38,41	0
2	G3N	B	401	34/34	0.95	0.11	24,29,33,35	0
2	G3N	C	401	34/34	0.96	0.12	22,25,28,33	0
2	G3N	A	401	34/34	0.97	0.10	21,24,26,27	0
2	G3N	D	401	34/34	0.97	0.10	19,23,26,26	0

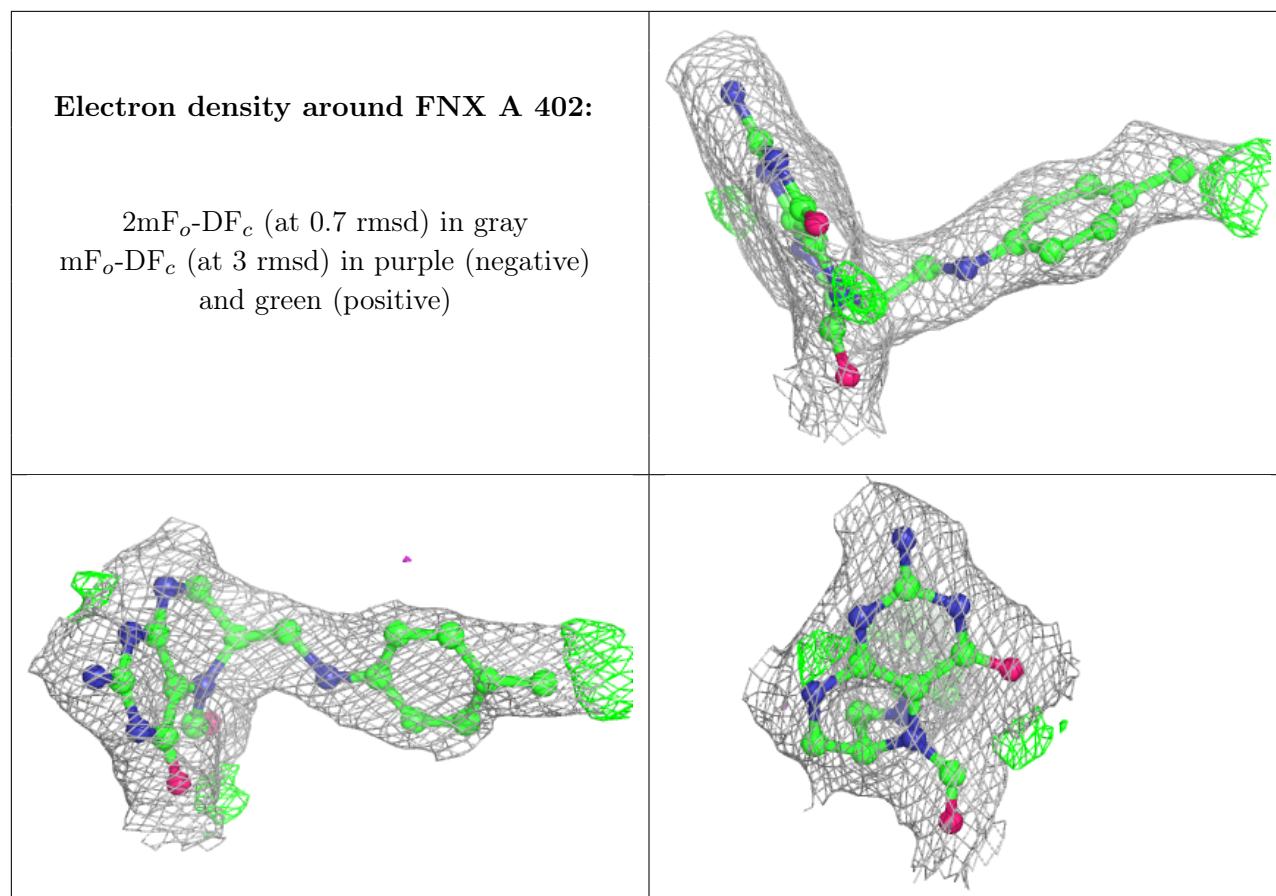
The following is a graphical depiction of the model fit to experimental electron density of all instances of the Ligand of Interest. In addition, ligands with molecular weight > 250 and outliers as shown on the geometry validation Tables will also be included. Each fit is shown from different orientation to approximate a three-dimensional view.

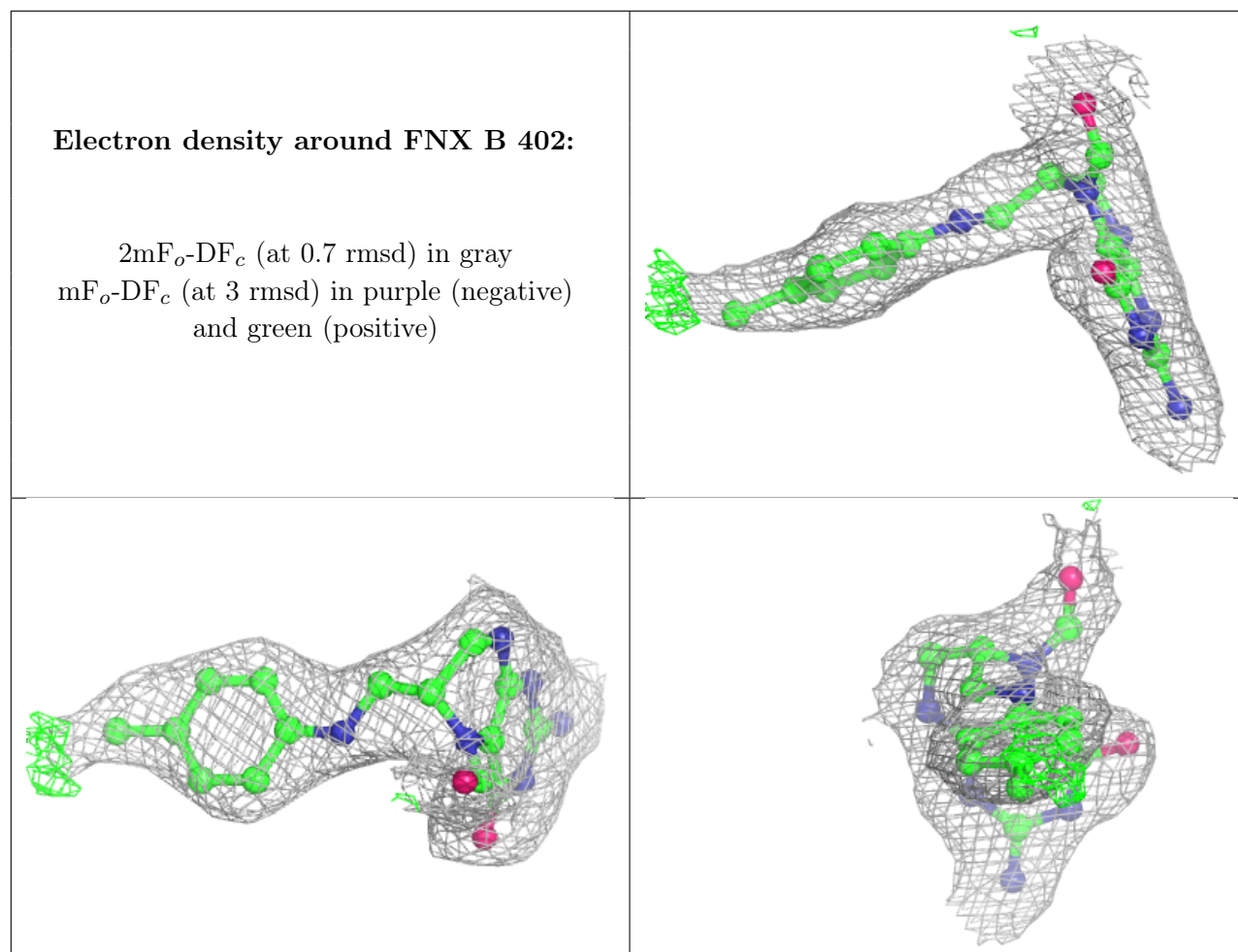


**Electron density around FNX C 402:**

$2mF_o-DF_c$  (at 0.7 rmsd) in gray  
 $mF_o-DF_c$  (at 3 rmsd) in purple (negative)  
and green (positive)

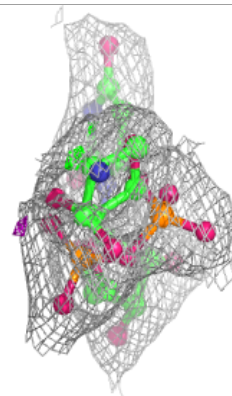
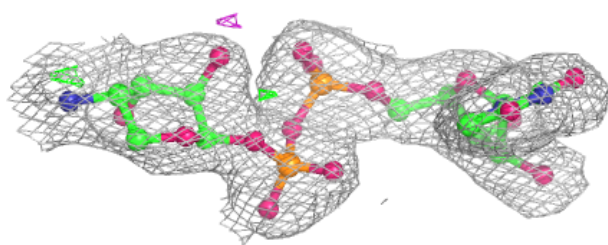
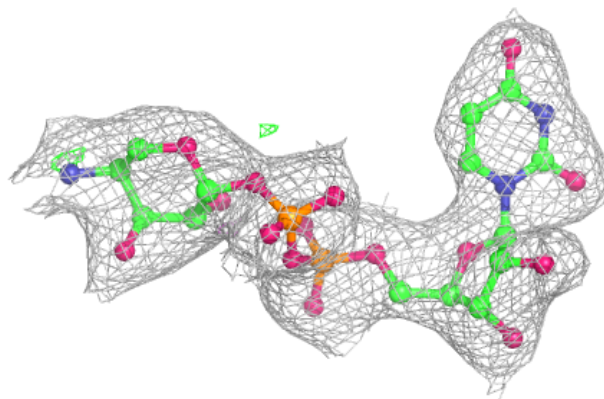




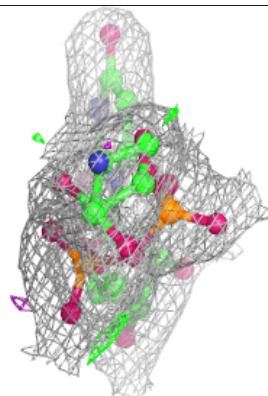
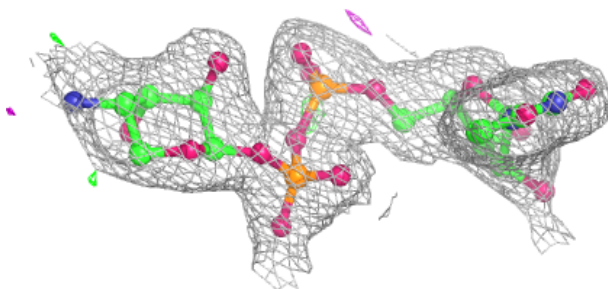
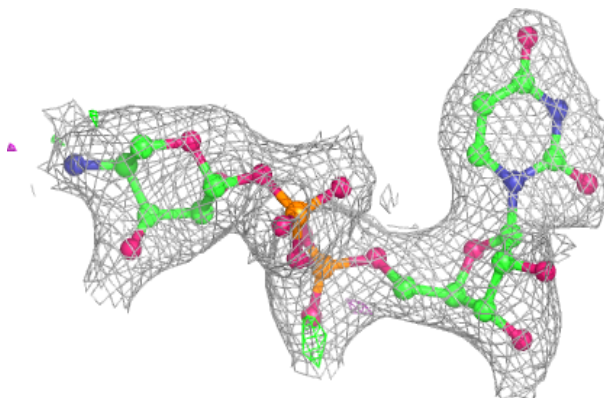


**Electron density around G3N B 401:**

$2mF_o-DF_c$  (at 0.7 rmsd) in gray  
 $mF_o-DF_c$  (at 3 rmsd) in purple (negative)  
and green (positive)

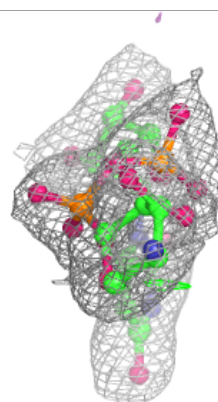
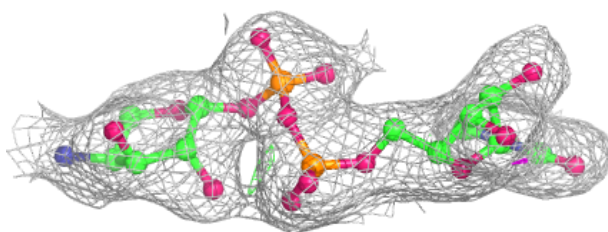
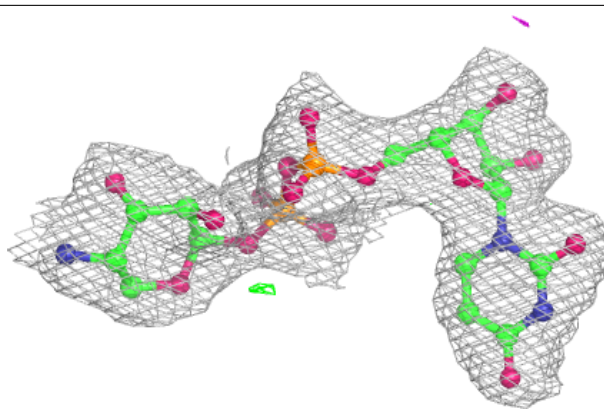
**Electron density around G3N C 401:**

$2mF_o-DF_c$  (at 0.7 rmsd) in gray  
 $mF_o-DF_c$  (at 3 rmsd) in purple (negative)  
and green (positive)

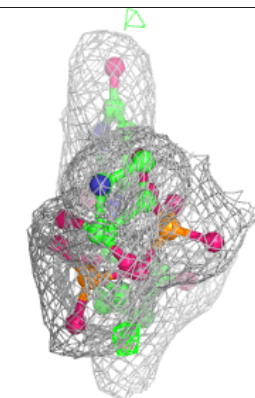
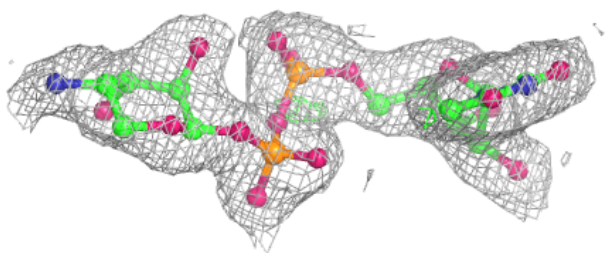
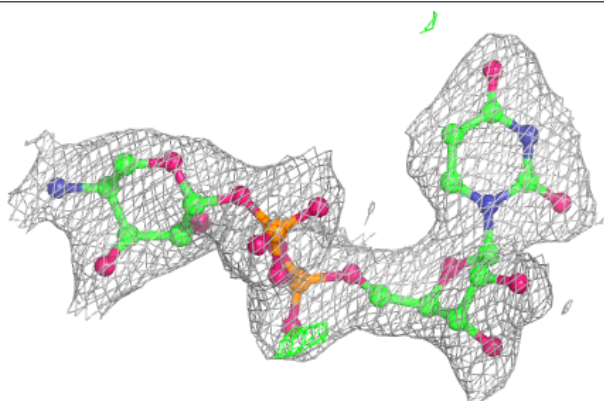


**Electron density around G3N A 401:**

$2mF_o-DF_c$  (at 0.7 rmsd) in gray  
 $mF_o-DF_c$  (at 3 rmsd) in purple (negative)  
and green (positive)

**Electron density around G3N D 401:**

$2mF_o-DF_c$  (at 0.7 rmsd) in gray  
 $mF_o-DF_c$  (at 3 rmsd) in purple (negative)  
and green (positive)





## 6.5 Other polymers [i](#)

There are no such residues in this entry.