



Full wwPDB X-ray Structure Validation Report ⓘ

Aug 27, 2023 – 07:37 AM EDT

PDB ID : 3I98
Title : X-ray crystallographic structure of Inorganic Pyrophosphatase at 298K from archaeon *Thermococcus thioreducens*
Authors : Hughes, R.C.; Coates, L.; Meehan, E.J.; Ng, J.D.
Deposited on : 2009-07-10
Resolution : 1.85 Å (reported)

This is a Full wwPDB X-ray Structure Validation Report for a publicly released PDB entry.

We welcome your comments at validation@mail.wwpdb.org

A user guide is available at

<https://www.wwpdb.org/validation/2017/XrayValidationReportHelp>

with specific help available everywhere you see the ⓘ symbol.

The types of validation reports are described at

<http://www.wwpdb.org/validation/2017/FAQs#types>.

The following versions of software and data (see [references ⓘ](#)) were used in the production of this report:

MolProbity : 4.02b-467
Mogul : 1.8.5 (274361), CSD as541be (2020)
Xtriage (Phenix) : 1.13
EDS : 2.35
Percentile statistics : 20191225.v01 (using entries in the PDB archive December 25th 2019)
Refmac : 5.8.0158
CCP4 : 7.0.044 (Gargrove)
Ideal geometry (proteins) : Engh & Huber (2001)
Ideal geometry (DNA, RNA) : Parkinson et al. (1996)
Validation Pipeline (wwPDB-VP) : 2.35

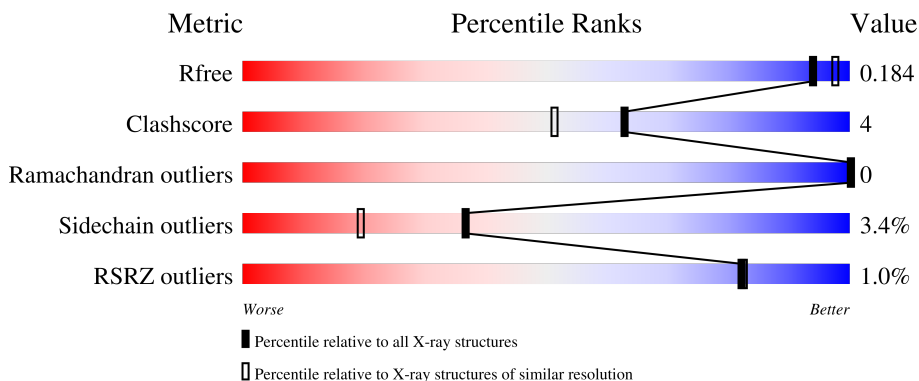
1 Overall quality at a glance

The following experimental techniques were used to determine the structure:

X-RAY DIFFRACTION

The reported resolution of this entry is 1.85 Å.

Percentile scores (ranging between 0-100) for global validation metrics of the entry are shown in the following graphic. The table shows the number of entries on which the scores are based.



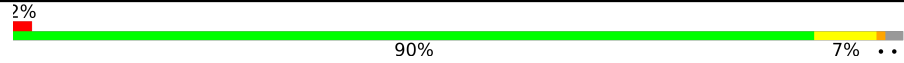
Metric	Whole archive (#Entries)	Similar resolution (#Entries, resolution range(Å))
R_{free}	130704	2469 (1.86-1.86)
Clashscore	141614	2625 (1.86-1.86)
Ramachandran outliers	138981	2592 (1.86-1.86)
Sidechain outliers	138945	2592 (1.86-1.86)
RSRZ outliers	127900	2436 (1.86-1.86)

The table below summarises the geometric issues observed across the polymeric chains and their fit to the electron density. The red, orange, yellow and green segments of the lower bar indicate the fraction of residues that contain outliers for ≥ 3 , 2, 1 and 0 types of geometric quality criteria respectively. A grey segment represents the fraction of residues that are not modelled. The numeric value for each fraction is indicated below the corresponding segment, with a dot representing fractions $\leq 5\%$. The upper red bar (where present) indicates the fraction of residues that have poor fit to the electron density. The numeric value is given above the bar.

Mol	Chain	Length	Quality of chain
1	A	178	 85% 11% ..
1	B	178	 89% 8% ..
1	C	178	 87% 11% ..
1	D	178	 84% 13% ..
1	E	178	 92% 6% ..

Continued on next page...

Continued from previous page...

Mol	Chain	Length	Quality of chain
1	F	178	 A horizontal bar chart representing the quality of the chain. The bar is divided into three segments: a small red segment on the left labeled '2%', a large green segment in the middle labeled '90%', and a small yellow segment on the right labeled '7%'. There are two small black dots at the far right end of the bar.

2 Entry composition [i](#)

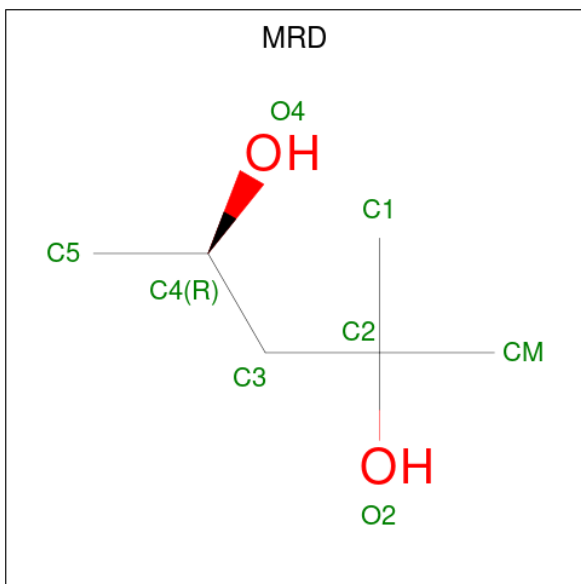
There are 6 unique types of molecules in this entry. The entry contains 10184 atoms, of which 0 are hydrogens and 0 are deuteriums.

In the tables below, the ZeroOcc column contains the number of atoms modelled with zero occupancy, the AltConf column contains the number of residues with at least one atom in alternate conformation and the Trace column contains the number of residues modelled with at most 2 atoms.

- Molecule 1 is a protein called Th-IPP.

Mol	Chain	Residues	Atoms					ZeroOcc	AltConf	Trace
			Total	C	N	O	S			
1	A	175	Total 1677	C 1083	N 270	O 315	S 9	0	25	0
1	B	175	Total 1624	C 1055	N 258	O 302	S 9	9	20	0
1	C	175	Total 1650	C 1071	N 262	O 309	S 8	0	21	0
1	D	175	Total 1549	C 1011	N 243	O 290	S 5	0	14	0
1	E	174	Total 1510	C 991	N 234	O 280	S 5	0	10	0
1	F	175	Total 1517	C 992	N 234	O 284	S 7	0	11	0

- Molecule 2 is (4R)-2-METHYLPENTANE-2,4-DIOL (three-letter code: MRD) (formula: $C_6H_{14}O_2$).

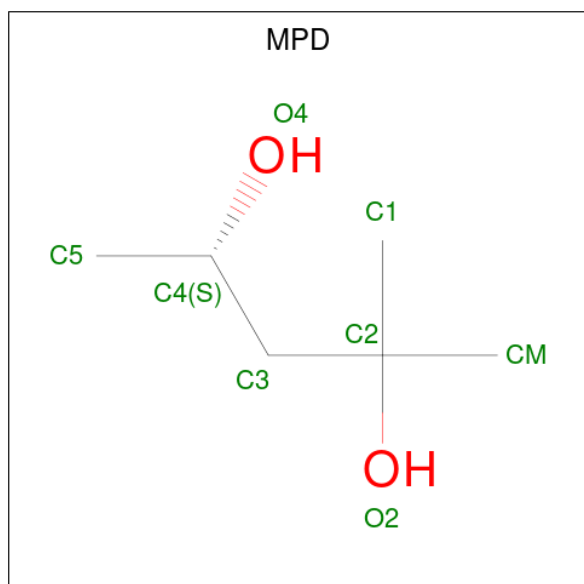


Mol	Chain	Residues	Atoms			ZeroOcc	AltConf
2	A	1	Total	C	O	0	0
			8	6	2		
2	F	1	Total	C	O	0	0
			8	6	2		

- Molecule 3 is CALCIUM ION (three-letter code: CA) (formula: Ca).

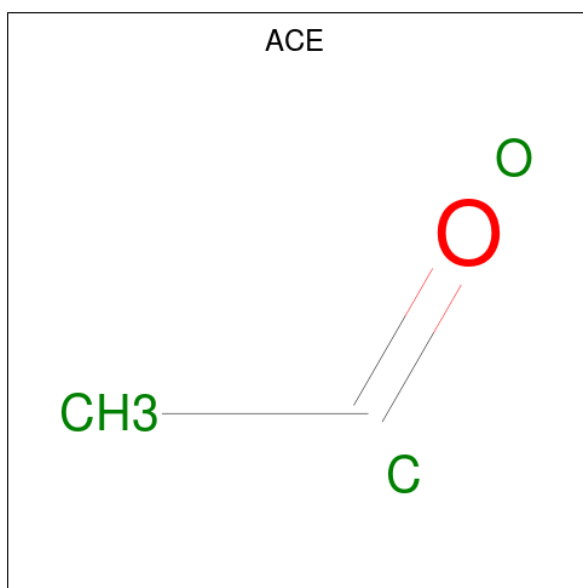
Mol	Chain	Residues	Atoms		ZeroOcc	AltConf
3	A	1	Total	Ca	0	0
			1	1		
3	B	1	Total	Ca	0	0
			1	1		
3	C	1	Total	Ca	0	0
			1	1		
3	D	1	Total	Ca	0	0
			1	1		
3	E	1	Total	Ca	0	0
			1	1		
3	F	1	Total	Ca	0	0
			1	1		

- Molecule 4 is (4S)-2-METHYL-2,4-PENTANEDIOL (three-letter code: MPD) (formula: C₆H₁₄O₂).



Mol	Chain	Residues	Atoms			ZeroOcc	AltConf
4	C	1	Total	C	O	0	0
			8	6	2		

- Molecule 5 is ACETYL GROUP (three-letter code: ACE) (formula: C₂H₄O).



Mol	Chain	Residues	Atoms		ZeroOcc	AltConf
5	E	1	Total	C O	0	0
			3	2 1		

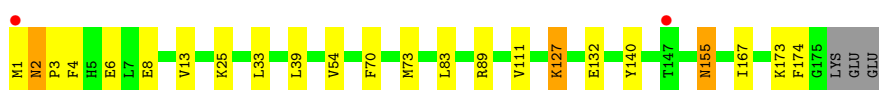
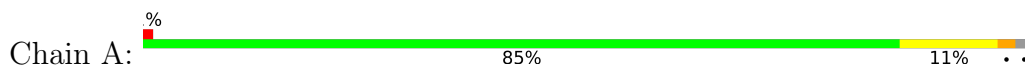
- Molecule 6 is water.

Mol	Chain	Residues	Atoms		ZeroOcc	AltConf
6	A	108	Total	O	0	0
			108	108		
6	B	118	Total	O	0	0
			118	118		
6	C	104	Total	O	0	0
			104	104		
6	D	105	Total	O	0	2
			105	105		
6	E	96	Total	O	0	0
			96	96		
6	F	93	Total	O	0	0
			93	93		

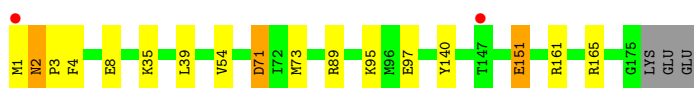
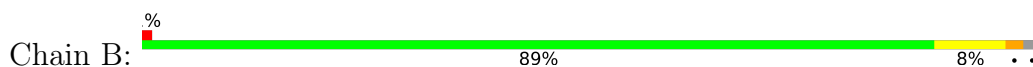
3 Residue-property plots [i](#)

These plots are drawn for all protein, RNA, DNA and oligosaccharide chains in the entry. The first graphic for a chain summarises the proportions of the various outlier classes displayed in the second graphic. The second graphic shows the sequence view annotated by issues in geometry and electron density. Residues are color-coded according to the number of geometric quality criteria for which they contain at least one outlier: green = 0, yellow = 1, orange = 2 and red = 3 or more. A red dot above a residue indicates a poor fit to the electron density ($RSRZ > 2$). Stretches of 2 or more consecutive residues without any outlier are shown as a green connector. Residues present in the sample, but not in the model, are shown in grey.

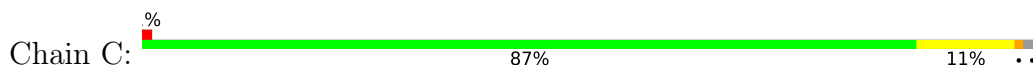
- Molecule 1: Th-IPP



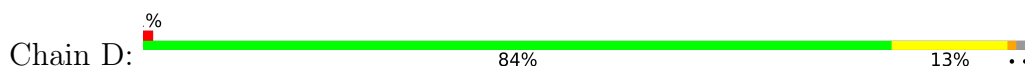
- Molecule 1: Th-IPP



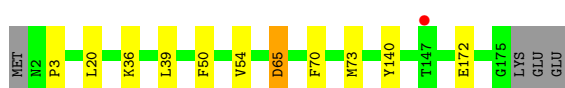
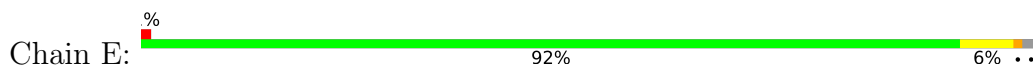
- Molecule 1: Th-IPP



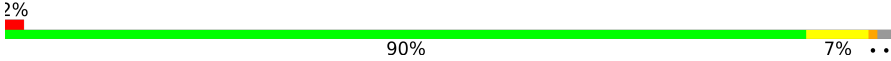
- Molecule 1: Th-IPP



- Molecule 1: Th-IPP



- Molecule 1: Th-IPP

Chain F:  2% 90% 7% ..



4 Data and refinement statistics

Property	Value	Source
Space group	C 1 2 1	Depositor
Cell constants a, b, c, α , β , γ	106.11Å 95.46Å 113.68Å 90.00° 98.12° 90.00°	Depositor
Resolution (Å)	45.21 – 1.85 46.21 – 1.85	Depositor EDS
% Data completeness (in resolution range)	98.9 (45.21-1.85) 99.0 (46.21-1.85)	Depositor EDS
R_{merge}	(Not available)	Depositor
R_{sym}	0.08	Depositor
$\langle I/\sigma(I) \rangle$ ¹	1.68 (at 1.84Å)	Xtrriage
Refinement program	PHENIX	Depositor
R, R_{free}	0.148 , 0.184 0.147 , 0.184	Depositor DCC
R_{free} test set	4744 reflections (5.00%)	wwPDB-VP
Wilson B-factor (Å ²)	18.9	Xtrriage
Anisotropy	0.019	Xtrriage
Bulk solvent k_{sol} (e/Å ³), B_{sol} (Å ²)	0.31 , 50.6	EDS
L-test for twinning ²	$\langle L \rangle = 0.51$, $\langle L^2 \rangle = 0.34$	Xtrriage
Estimated twinning fraction	No twinning to report.	Xtrriage
F_o, F_c correlation	0.98	EDS
Total number of atoms	10184	wwPDB-VP
Average B, all atoms (Å ²)	23.0	wwPDB-VP

Xtrriage's analysis on translational NCS is as follows: *The analyses of the Patterson function reveals a significant off-origin peak that is 37.62 % of the origin peak, indicating pseudo-translational symmetry. The chance of finding a peak of this or larger height randomly in a structure without pseudo-translational symmetry is equal to 4.1737e-04. The detected translational NCS is most likely also responsible for the elevated intensity ratio.*

¹Intensities estimated from amplitudes.

²Theoretical values of $\langle |L| \rangle$, $\langle L^2 \rangle$ for acentric reflections are 0.5, 0.333 respectively for untwinned datasets, and 0.375, 0.2 for perfectly twinned datasets.

5 Model quality [i](#)

5.1 Standard geometry [i](#)

Bond lengths and bond angles in the following residue types are not validated in this section: MPD, MRD, ACE, CA

The Z score for a bond length (or angle) is the number of standard deviations the observed value is removed from the expected value. A bond length (or angle) with $|Z| > 5$ is considered an outlier worth inspection. RMSZ is the root-mean-square of all Z scores of the bond lengths (or angles).

Mol	Chain	Bond lengths		Bond angles	
		RMSZ	# Z >5	RMSZ	# Z >5
1	A	0.35	0/1727	0.51	0/2333
1	B	0.34	0/1682	0.51	0/2271
1	C	0.34	0/1697	0.51	0/2294
1	D	0.34	0/1599	0.51	0/2164
1	E	0.34	0/1560	0.50	0/2112
1	F	0.33	0/1568	0.50	0/2126
All	All	0.34	0/9833	0.51	0/13300

There are no bond length outliers.

There are no bond angle outliers.

There are no chirality outliers.

There are no planarity outliers.

5.2 Too-close contacts [i](#)

In the following table, the Non-H and H(model) columns list the number of non-hydrogen atoms and hydrogen atoms in the chain respectively. The H(added) column lists the number of hydrogen atoms added and optimized by MolProbity. The Clashes column lists the number of clashes within the asymmetric unit, whereas Symm-Clashes lists symmetry-related clashes.

Mol	Chain	Non-H	H(model)	H(added)	Clashes	Symm-Clashes
1	A	1677	0	1631	22	0
1	B	1624	0	1587	16	0
1	C	1650	0	1606	15	0
1	D	1549	0	1493	14	0
1	E	1510	0	1468	9	0
1	F	1517	0	1450	8	0
2	A	8	0	14	3	0

Continued on next page...

Continued from previous page...

Mol	Chain	Non-H	H(model)	H(added)	Clashes	Symm-Clashes
2	F	8	0	14	1	0
3	A	1	0	0	0	0
3	B	1	0	0	0	0
3	C	1	0	0	0	0
3	D	1	0	0	0	0
3	E	1	0	0	0	0
3	F	1	0	0	0	0
4	C	8	0	14	0	0
5	E	3	0	3	1	0
6	A	108	0	0	2	0
6	B	118	0	0	1	0
6	C	104	0	0	3	0
6	D	105	0	0	0	0
6	E	96	0	0	1	0
6	F	93	0	0	1	0
All	All	10184	0	9280	81	0

The all-atom clashscore is defined as the number of clashes found per 1000 atoms (including hydrogen atoms). The all-atom clashscore for this structure is 4.

All (81) close contacts within the same asymmetric unit are listed below, sorted by their clash magnitude.

Atom-1	Atom-2	Interatomic distance (Å)	Clash overlap (Å)
2:A:620:MRD:O2	2:A:620:MRD:H5C3	1.70	0.88
1:F:1:MET:HB2	1:F:6:GLU:HG3	1.55	0.87
1:B:35[B]:LYS:HA	1:B:35[B]:LYS:HE2	1.65	0.77
1:B:97:GLU:HG3	1:B:151[A]:GLU:OE1	1.88	0.73
1:B:95:LYS:O	1:B:151[A]:GLU:HG2	1.92	0.70
1:B:1[B]:MET:O	1:B:2:ASN:HB2	1.91	0.69
1:B:1[A]:MET:HE1	1:D:37:THR:HB	1.76	0.68
1:D:55[B]:ASP:OD2	1:D:76:MET:HB2	1.96	0.66
1:A:8[B]:GLU:OE2	1:C:36:LYS:HE3	1.98	0.63
1:B:1[A]:MET:CE	1:D:37:THR:HB	2.30	0.61
1:A:89[C]:ARG:HH12	1:A:111:VAL:HG13	1.66	0.60
1:A:39:LEU:HD11	1:E:3:PRO:HB3	1.84	0.60
1:C:34:ASP:OD2	1:C:36:LYS:HG3	2.03	0.58
1:E:54:VAL:HG21	1:E:73:MET:HB3	1.85	0.58
1:B:1[B]:MET:O	1:B:2:ASN:CB	2.53	0.56
1:A:89[C]:ARG:HG3	1:A:111:VAL:HG22	1.88	0.56
1:C:169[B]:MET:HG3	6:C:373:HOH:O	2.07	0.55
1:A:155:ASN:HD22	1:A:155:ASN:C	2.10	0.54

Continued on next page...

Continued from previous page...

Atom-1	Atom-2	Interatomic distance (Å)	Clash overlap (Å)
1:A:89[A]:ARG:HG3	1:A:111:VAL:HG22	1.89	0.53
1:D:155:ASN:C	1:D:155:ASN:HD22	2.12	0.53
1:A:2:ASN:O	1:A:6[B]:GLU:HG2	2.09	0.52
1:C:8[A]:GLU:H	1:C:8[A]:GLU:CD	2.12	0.52
1:F:54:VAL:HG21	1:F:73:MET:HB3	1.91	0.52
1:A:2:ASN:HD22	1:A:2:ASN:C	2.12	0.52
1:A:89[B]:ARG:NH2	6:A:204:HOH:O	2.43	0.52
1:A:3:PRO:HB3	1:C:39:LEU:HD11	1.91	0.51
1:C:35[D]:LYS:HB2	1:C:35[D]:LYS:NZ	2.25	0.51
2:F:639:MRD:O4	2:F:639:MRD:HMC3	2.10	0.51
1:A:89[C]:ARG:NH1	1:A:111:VAL:HG13	2.26	0.51
1:D:173:LYS:HD3	1:D:174:PHE:CE2	2.47	0.49
1:B:54:VAL:HG21	1:B:73:MET:HB3	1.93	0.49
1:F:25[A]:LYS:NZ	6:F:506:HOH:O	2.45	0.49
1:D:97:GLU:HG3	1:D:151:GLU:OE2	2.14	0.48
1:F:33:LEU:HD11	1:F:83:LEU:HD21	1.95	0.48
1:D:32[B]:GLU:HG2	1:D:33:LEU:N	2.29	0.48
1:A:2:ASN:HD22	1:A:4:PHE:H	1.61	0.48
1:F:33:LEU:HD11	1:F:83:LEU:CD2	2.45	0.47
1:A:33[A]:LEU:HD11	1:A:83:LEU:HD21	1.97	0.46
1:C:33:LEU:HD12	1:C:33:LEU:HA	1.76	0.46
1:D:54:VAL:HG21	1:D:73:MET:HB3	1.97	0.46
1:C:55[B]:ASP:OD2	1:C:76:MET:HB2	2.16	0.46
1:D:146[A]:LYS:O	1:D:147:THR:O	2.34	0.46
1:B:2:ASN:HD22	1:B:4:PHE:H	1.64	0.45
1:B:161[A]:ARG:O	1:B:165[A]:ARG:HG3	2.17	0.45
1:C:54:VAL:HG21	1:C:73:MET:HB3	1.98	0.45
1:A:2:ASN:ND2	1:A:4:PHE:H	2.15	0.44
5:E:621:ACE:H3	6:E:387:HOH:O	2.16	0.44
1:B:2:ASN:HD22	1:B:2:ASN:C	2.21	0.44
1:C:102:LYS:NZ	6:C:273:HOH:O	2.41	0.44
1:E:50[A]:PHE:N	1:E:50[A]:PHE:CD1	2.85	0.44
1:C:33:LEU:HD11	1:C:83:LEU:HD21	1.99	0.44
1:B:95:LYS:C	1:B:151[A]:GLU:HG2	2.37	0.43
1:D:155:ASN:ND2	1:D:158:GLU:H	2.15	0.43
1:A:54:VAL:HG21	1:A:73:MET:HB3	2.00	0.43
1:E:65:ASP:OD1	1:E:65:ASP:N	2.52	0.43
1:C:13[B]:VAL:HG11	1:C:167:ILE:CD1	2.49	0.43
1:D:1:MET:N	1:D:3:PRO:HD3	2.34	0.43
1:A:173[A]:LYS:HD3	1:A:174:PHE:CE2	2.54	0.43
1:A:33[B]:LEU:HD21	1:A:83:LEU:HD21	2.00	0.42

Continued on next page...

Continued from previous page...

Atom-1	Atom-2	Interatomic distance (Å)	Clash overlap (Å)
1:B:3:PRO:HB3	1:D:39:LEU:HD11	2.00	0.42
1:B:39:LEU:HD11	1:F:3:PRO:HB3	2.00	0.42
1:A:13[B]:VAL:HG11	1:A:167:ILE:CD1	2.50	0.42
1:C:102:LYS:HE3	1:C:104:TRP:CE2	2.54	0.42
1:A:25[A]:LYS:NZ	6:A:555:HOH:O	2.52	0.42
1:B:89[A]:ARG:HD3	6:B:350:HOH:O	2.20	0.42
1:A:33[A]:LEU:HD11	1:A:83:LEU:CD2	2.50	0.42
1:F:33:LEU:HD12	1:F:33:LEU:HA	1.84	0.42
1:C:3:PRO:HB3	1:E:39:LEU:HD11	2.01	0.41
1:C:122[B]:ILE:HD12	1:C:122[B]:ILE:HA	1.81	0.41
2:A:620:MRD:H5C3	2:A:620:MRD:H2	1.79	0.41
1:A:127[A]:LYS:HE2	1:A:127[A]:LYS:O	2.20	0.41
1:A:173[B]:LYS:HE3	1:A:173[B]:LYS:HB2	1.92	0.41
2:A:620:MRD:H4	2:A:620:MRD:H1C2	1.71	0.41
1:F:157:GLU:O	1:F:161[A]:ARG:HG3	2.21	0.41
1:D:127[B]:LYS:HE2	1:D:131:ASP:OD1	2.21	0.41
1:D:174:PHE:HA	1:D:175[A]:GLY:HA3	1.66	0.40
6:C:467:HOH:O	1:E:39:LEU:HD21	2.21	0.40
1:E:3:PRO:HB2	1:E:20:LEU:HD21	2.04	0.40

There are no symmetry-related clashes.

5.3 Torsion angles [i](#)

5.3.1 Protein backbone [i](#)

In the following table, the Percentiles column shows the percent Ramachandran outliers of the chain as a percentile score with respect to all X-ray entries followed by that with respect to entries of similar resolution.

The Analysed column shows the number of residues for which the backbone conformation was analysed, and the total number of residues.

Mol	Chain	Analysed	Favoured	Allowed	Outliers	Percentiles	
1	A	198/178 (111%)	194 (98%)	4 (2%)	0	100	100
1	B	194/178 (109%)	190 (98%)	4 (2%)	0	100	100
1	C	197/178 (111%)	194 (98%)	3 (2%)	0	100	100
1	D	187/178 (105%)	182 (97%)	5 (3%)	0	100	100
1	E	182/178 (102%)	179 (98%)	3 (2%)	0	100	100

Continued on next page...

Continued from previous page...

Mol	Chain	Analysed	Favoured	Allowed	Outliers	Percentiles	
1	F	184/178 (103%)	180 (98%)	4 (2%)	0	100	100
All	All	1142/1068 (107%)	1119 (98%)	23 (2%)	0	100	100

There are no Ramachandran outliers to report.

5.3.2 Protein sidechains [i](#)

In the following table, the Percentiles column shows the percent sidechain outliers of the chain as a percentile score with respect to all X-ray entries followed by that with respect to entries of similar resolution.

The Analysed column shows the number of residues for which the sidechain conformation was analysed, and the total number of residues.

Mol	Chain	Analysed	Rotameric	Outliers	Percentiles	
1	A	181/159 (114%)	171 (94%)	10 (6%)	21	7
1	B	175/159 (110%)	168 (96%)	7 (4%)	31	14
1	C	178/159 (112%)	174 (98%)	4 (2%)	52	36
1	D	164/159 (103%)	158 (96%)	6 (4%)	34	17
1	E	160/159 (101%)	155 (97%)	5 (3%)	40	23
1	F	160/159 (101%)	154 (96%)	6 (4%)	33	16
All	All	1018/954 (107%)	980 (96%)	38 (4%)	37	17

All (38) residues with a non-rotameric sidechain are listed below:

Mol	Chain	Res	Type
1	A	1[A]	MET
1	A	1[B]	MET
1	A	1[C]	MET
1	A	2	ASN
1	A	70	PHE
1	A	127[A]	LYS
1	A	127[B]	LYS
1	A	132	GLU
1	A	140	TYR
1	A	155	ASN
1	B	2	ASN
1	B	8	GLU
1	B	71[A]	ASP

Continued on next page...

Continued from previous page...

Mol	Chain	Res	Type
1	B	71[B]	ASP
1	B	140	TYR
1	B	151[A]	GLU
1	B	151[B]	GLU
1	C	6	GLU
1	C	33	LEU
1	C	132	GLU
1	C	140	TYR
1	D	6	GLU
1	D	33	LEU
1	D	70	PHE
1	D	132	GLU
1	D	140	TYR
1	D	155	ASN
1	E	65	ASP
1	E	70	PHE
1	E	140	TYR
1	E	172[A]	GLU
1	E	172[B]	GLU
1	F	33	LEU
1	F	70	PHE
1	F	132	GLU
1	F	140	TYR
1	F	172[A]	GLU
1	F	172[B]	GLU

Sometimes sidechains can be flipped to improve hydrogen bonding and reduce clashes. All (9) such sidechains are listed below:

Mol	Chain	Res	Type
1	A	2	ASN
1	A	61	GLN
1	A	155	ASN
1	B	2	ASN
1	B	61	GLN
1	C	61	GLN
1	D	155	ASN
1	E	61	GLN
1	F	61	GLN

5.3.3 RNA [i](#)

There are no RNA molecules in this entry.

5.4 Non-standard residues in protein, DNA, RNA chains [i](#)

There are no non-standard protein/DNA/RNA residues in this entry.

5.5 Carbohydrates [i](#)

There are no monosaccharides in this entry.

5.6 Ligand geometry [i](#)

Of 10 ligands modelled in this entry, 6 are monoatomic - leaving 4 for Mogul analysis.

In the following table, the Counts columns list the number of bonds (or angles) for which Mogul statistics could be retrieved, the number of bonds (or angles) that are observed in the model and the number of bonds (or angles) that are defined in the Chemical Component Dictionary. The Link column lists molecule types, if any, to which the group is linked. The Z score for a bond length (or angle) is the number of standard deviations the observed value is removed from the expected value. A bond length (or angle) with $|Z| > 2$ is considered an outlier worth inspection. RMSZ is the root-mean-square of all Z scores of the bond lengths (or angles).

Mol	Type	Chain	Res	Link	Bond lengths			Bond angles		
					Counts	RMSZ	# Z > 2	Counts	RMSZ	# Z > 2
4	MPD	C	619	-	7,7,7	0.26	0	9,10,10	0.32	0
2	MRD	A	620	-	7,7,7	1.08	1 (14%)	9,10,10	1.84	3 (33%)
5	ACE	E	621	-	1,2,2	0.81	0	1,1,1	0.18	0
2	MRD	F	639	-	7,7,7	0.30	0	9,10,10	0.43	0

In the following table, the Chirals column lists the number of chiral outliers, the number of chiral centers analysed, the number of these observed in the model and the number defined in the Chemical Component Dictionary. Similar counts are reported in the Torsion and Rings columns. '-' means no outliers of that kind were identified.

Mol	Type	Chain	Res	Link	Chirals	Torsions	Rings
4	MPD	C	619	-	-	0/5/5/5	-
2	MRD	A	620	-	-	1/5/5/5	-
2	MRD	F	639	-	-	2/5/5/5	-

All (1) bond length outliers are listed below:

Mol	Chain	Res	Type	Atoms	Z	Observed(Å)	Ideal(Å)
2	A	620	MRD	C3-C2	-2.14	1.47	1.53

All (3) bond angle outliers are listed below:

Mol	Chain	Res	Type	Atoms	Z	Observed($^{\circ}$)	Ideal($^{\circ}$)
2	A	620	MRD	O4-C4-C3	-3.26	98.20	111.36
2	A	620	MRD	CM-C2-C1	2.92	116.67	110.57
2	A	620	MRD	C5-C4-C3	-2.42	100.28	111.69

There are no chirality outliers.

All (3) torsion outliers are listed below:

Mol	Chain	Res	Type	Atoms
2	A	620	MRD	C2-C3-C4-O4
2	F	639	MRD	CM-C2-C3-C4
2	F	639	MRD	O2-C2-C3-C4

There are no ring outliers.

3 monomers are involved in 5 short contacts:

Mol	Chain	Res	Type	Clashes	Symm-Clashes
2	A	620	MRD	3	0
5	E	621	ACE	1	0
2	F	639	MRD	1	0

5.7 Other polymers [i](#)

There are no such residues in this entry.

5.8 Polymer linkage issues [i](#)

There are no chain breaks in this entry.

6 Fit of model and data [i](#)

6.1 Protein, DNA and RNA chains [i](#)

In the following table, the column labelled ‘#RSRZ > 2’ contains the number (and percentage) of RSRZ outliers, followed by percent RSRZ outliers for the chain as percentile scores relative to all X-ray entries and entries of similar resolution. The OWAB column contains the minimum, median, 95th percentile and maximum values of the occupancy-weighted average B-factor per residue. The column labelled ‘Q < 0.9’ lists the number of (and percentage) of residues with an average occupancy less than 0.9.

Mol	Chain	Analysed	<RSRZ>	#RSRZ>2	OWAB(Å ²)	Q<0.9
1	A	175/178 (98%)	-0.65	2 (1%) 80 81	11, 18, 41, 61	2 (1%)
1	B	175/178 (98%)	-0.77	2 (1%) 80 81	10, 18, 37, 59	4 (2%)
1	C	175/178 (98%)	-0.57	1 (0%) 89 89	10, 17, 46, 67	1 (0%)
1	D	175/178 (98%)	-0.57	2 (1%) 80 81	11, 18, 48, 73	0
1	E	174/178 (97%)	-0.61	1 (0%) 89 89	11, 20, 48, 69	1 (0%)
1	F	175/178 (98%)	-0.58	3 (1%) 70 70	11, 21, 47, 91	1 (0%)
All	All	1049/1068 (98%)	-0.63	11 (1%) 82 82	10, 19, 47, 91	9 (0%)

All (11) RSRZ outliers are listed below:

Mol	Chain	Res	Type	RSRZ
1	F	1	MET	5.3
1	A	1[A]	MET	4.1
1	B	147	THR	4.1
1	D	1	MET	4.0
1	E	147	THR	3.5
1	C	1	MET	3.4
1	D	175[A]	GLY	2.6
1	B	1[A]	MET	2.5
1	A	147	THR	2.4
1	F	175	GLY	2.2
1	F	147	THR	2.1

6.2 Non-standard residues in protein, DNA, RNA chains [i](#)

There are no non-standard protein/DNA/RNA residues in this entry.

6.3 Carbohydrates [i](#)

There are no monosaccharides in this entry.

6.4 Ligands [i](#)

In the following table, the Atoms column lists the number of modelled atoms in the group and the number defined in the chemical component dictionary. The B-factors column lists the minimum, median, 95th percentile and maximum values of B factors of atoms in the group. The column labelled 'Q< 0.9' lists the number of atoms with occupancy less than 0.9.

Mol	Type	Chain	Res	Atoms	RSCC	RSR	B-factors(Å ²)	Q<0.9
2	MRD	A	620	8/8	0.84	0.17	24,30,38,39	8
5	ACE	E	621	3/3	0.86	0.41	34,34,56,58	0
2	MRD	F	639	8/8	0.87	0.15	29,45,50,53	0
4	MPD	C	619	8/8	0.91	0.17	38,46,53,61	0
3	CA	F	626	1/1	0.97	0.12	32,32,32,32	0
3	CA	E	625	1/1	0.98	0.14	35,35,35,35	0
3	CA	C	623	1/1	0.98	0.13	32,32,32,32	0
3	CA	A	627	1/1	0.99	0.12	26,26,26,26	0
3	CA	D	624	1/1	0.99	0.18	43,43,43,43	0
3	CA	B	622	1/1	0.99	0.08	23,23,23,23	0

6.5 Other polymers [i](#)

There are no such residues in this entry.