



Full wwPDB X-ray Structure Validation Report ⓘ

Feb 13, 2024 – 03:44 AM EST

PDB ID : 3I5X
Title : Structure of Mss116p bound to ssRNA and AMP-PNP
Authors : Del Campo, M.; Lambowitz, A.M.
Deposited on : 2009-07-06
Resolution : 1.90 Å(reported)

This is a Full wwPDB X-ray Structure Validation Report for a publicly released PDB entry.

We welcome your comments at validation@mail.wwpdb.org

A user guide is available at

<https://www.wwpdb.org/validation/2017/XrayValidationReportHelp>

with specific help available everywhere you see the ⓘ symbol.

The types of validation reports are described at

<http://www.wwpdb.org/validation/2017/FAQs#types>.

The following versions of software and data (see [references ⓘ](#)) were used in the production of this report:

MolProbity : 4.02b-467
Mogul : 1.8.5 (274361), CSD as541be (2020)
Xtriage (Phenix) : 1.13
EDS : 2.36
buster-report : 1.1.7 (2018)
Percentile statistics : 20191225.v01 (using entries in the PDB archive December 25th 2019)
Refmac : 5.8.0158
CCP4 : 7.0.044 (Gargrove)
Ideal geometry (proteins) : Engh & Huber (2001)
Ideal geometry (DNA, RNA) : Parkinson et al. (1996)
Validation Pipeline (wwPDB-VP) : 2.36

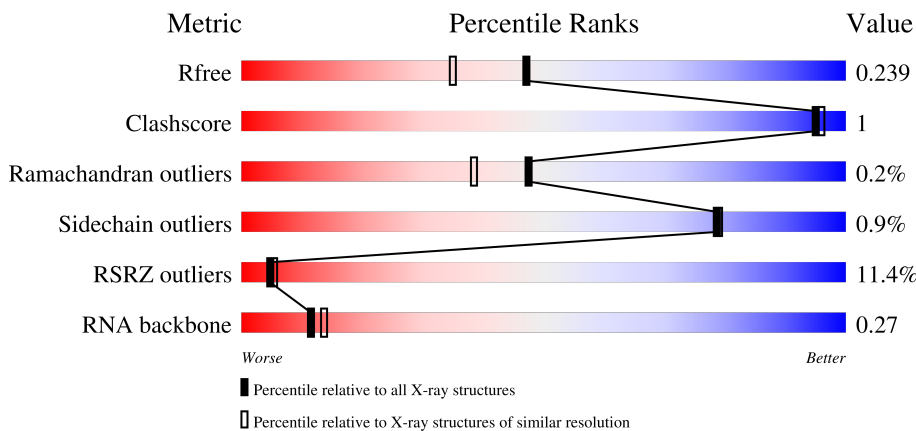
1 Overall quality at a glance

The following experimental techniques were used to determine the structure:

X-RAY DIFFRACTION

The reported resolution of this entry is 1.90 Å.

Percentile scores (ranging between 0-100) for global validation metrics of the entry are shown in the following graphic. The table shows the number of entries on which the scores are based.



Metric	Whole archive (#Entries)	Similar resolution (#Entries, resolution range(Å))
R_{free}	130704	6207 (1.90-1.90)
Clashscore	141614	6847 (1.90-1.90)
Ramachandran outliers	138981	6760 (1.90-1.90)
Sidechain outliers	138945	6760 (1.90-1.90)
RSRZ outliers	127900	6082 (1.90-1.90)
RNA backbone	3102	1013 (2.42-1.38)

The table below summarises the geometric issues observed across the polymeric chains and their fit to the electron density. The red, orange, yellow and green segments of the lower bar indicate the fraction of residues that contain outliers for ≥ 3 , 2, 1 and 0 types of geometric quality criteria respectively. A grey segment represents the fraction of residues that are not modelled. The numeric value for each fraction is indicated below the corresponding segment, with a dot representing fractions $\leq 5\%$. The upper red bar (where present) indicates the fraction of residues that have poor fit to the electron density. The numeric value is given above the bar.

Mol	Chain	Length	Quality of chain
1	A	563	
2	B	10	

2 Entry composition [i](#)

There are 5 unique types of molecules in this entry. The entry contains 4529 atoms, of which 0 are hydrogens and 0 are deuteriums.

In the tables below, the ZeroOcc column contains the number of atoms modelled with zero occupancy, the AltConf column contains the number of residues with at least one atom in alternate conformation and the Trace column contains the number of residues modelled with at most 2 atoms.

- Molecule 1 is a protein called ATP-dependent RNA helicase MSS116.

Mol	Chain	Residues	Atoms					ZeroOcc	AltConf	Trace
			Total	C	N	O	S			
1	A	509	4018	2573	670	759	16	0	5	0

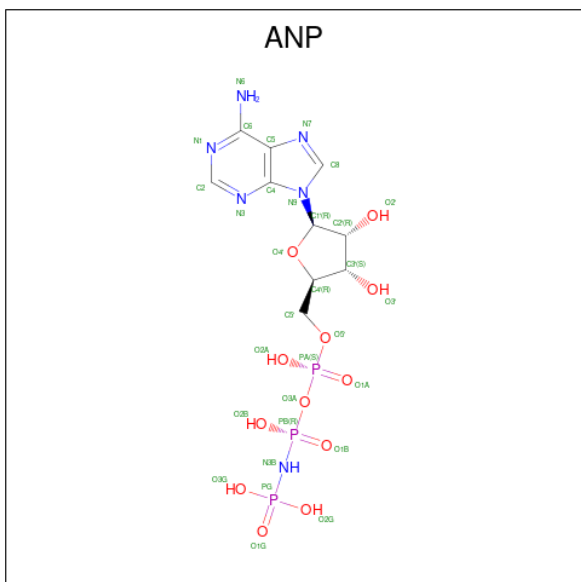
There are 2 discrepancies between the modelled and reference sequences:

Chain	Residue	Modelled	Actual	Comment	Reference
A	35	GLY	-	expression tag	UNP P15424
A	36	SER	-	expression tag	UNP P15424

- Molecule 2 is a RNA chain called 5'-R(*UP*UP*UP*UP*UP*UP*UP*UP*UP*U)-3'.

Mol	Chain	Residues	Atoms					ZeroOcc	AltConf	Trace
			Total	C	N	O	P			
2	B	10	190	86	19	76	9	0	0	0

- Molecule 3 is PHOSPHOAMINOPHOSPHONIC ACID-ADENYLATE ESTER (three-letter code: ANP) (formula: C₁₀H₁₇N₆O₁₂P₃).



Mol	Chain	Residues	Atoms					ZeroOcc	AltConf
			Total	C	N	O	P		
3	A	1	31	10	6	12	3	0	0

- Molecule 4 is MAGNESIUM ION (three-letter code: MG) (formula: Mg).

Mol	Chain	Residues	Atoms		ZeroOcc	AltConf
			Total	Mg		
4	A	1	1	1	0	0

- Molecule 5 is water.

Mol	Chain	Residues	Atoms		ZeroOcc	AltConf
			Total	O		
5	A	279	279	279	0	0
5	B	10	10	10	0	0

4 Data and refinement statistics

Property	Value	Source
Space group	P 21 21 2	Depositor
Cell constants a, b, c, α , β , γ	88.54Å 126.52Å 55.52Å 90.00° 90.00° 90.00°	Depositor
Resolution (Å)	34.00 – 1.90 29.79 – 1.94	Depositor EDS
% Data completeness (in resolution range)	96.3 (34.00-1.90) 96.9 (29.79-1.94)	Depositor EDS
R_{merge}	0.08	Depositor
R_{sym}	(Not available)	Depositor
$\langle I/\sigma(I) \rangle$ ¹	5.52 (at 1.95Å)	Xtrriage
Refinement program	REFMAC 5.5.0070	Depositor
R, R_{free}	0.191 , 0.225 0.206 , 0.239	Depositor DCC
R_{free} test set	2276 reflections (5.03%)	wwPDB-VP
Wilson B-factor (Å ²)	27.2	Xtrriage
Anisotropy	0.327	Xtrriage
Bulk solvent k_{sol} (e/Å ³), B_{sol} (Å ²)	0.35 , 41.4	EDS
L-test for twinning ²	$\langle L \rangle = 0.50$, $\langle L^2 \rangle = 0.33$	Xtrriage
Estimated twinning fraction	No twinning to report.	Xtrriage
F_o, F_c correlation	0.95	EDS
Total number of atoms	4529	wwPDB-VP
Average B, all atoms (Å ²)	16.0	wwPDB-VP

Xtrriage's analysis on translational NCS is as follows: *The largest off-origin peak in the Patterson function is 5.23% of the height of the origin peak. No significant pseudotranslation is detected.*

¹Intensities estimated from amplitudes.

²Theoretical values of $\langle |L| \rangle$, $\langle L^2 \rangle$ for acentric reflections are 0.5, 0.333 respectively for untwinned datasets, and 0.375, 0.2 for perfectly twinned datasets.

5 Model quality [i](#)

5.1 Standard geometry [i](#)

Bond lengths and bond angles in the following residue types are not validated in this section: ANP, MG

The Z score for a bond length (or angle) is the number of standard deviations the observed value is removed from the expected value. A bond length (or angle) with $|Z| > 5$ is considered an outlier worth inspection. RMSZ is the root-mean-square of all Z scores of the bond lengths (or angles).

Mol	Chain	Bond lengths		Bond angles	
		RMSZ	# Z >5	RMSZ	# Z >5
1	A	0.40	0/4099	0.53	0/5529
2	B	0.84	0/208	1.19	1/320 (0.3%)
All	All	0.43	0/4307	0.59	1/5849 (0.0%)

There are no bond length outliers.

All (1) bond angle outliers are listed below:

Mol	Chain	Res	Type	Atoms	Z	Observed(°)	Ideal(°)
2	B	3	U	C3'-C2'-C1'	5.04	105.53	101.50

There are no chirality outliers.

There are no planarity outliers.

5.2 Too-close contacts [i](#)

In the following table, the Non-H and H(model) columns list the number of non-hydrogen atoms and hydrogen atoms in the chain respectively. The H(added) column lists the number of hydrogen atoms added and optimized by MolProbity. The Clashes column lists the number of clashes within the asymmetric unit, whereas Symm-Clashes lists symmetry-related clashes.

Mol	Chain	Non-H	H(model)	H(added)	Clashes	Symm-Clashes
1	A	4018	0	4081	10	0
2	B	190	0	99	0	0
3	A	31	0	13	1	0
4	A	1	0	0	0	0
5	A	279	0	0	1	0
5	B	10	0	0	0	0
All	All	4529	0	4193	10	0

The all-atom clashscore is defined as the number of clashes found per 1000 atoms (including hydrogen atoms). The all-atom clashscore for this structure is 1.

All (10) close contacts within the same asymmetric unit are listed below, sorted by their clash magnitude.

Atom-1	Atom-2	Interatomic distance (Å)	Clash overlap (Å)
1:A:252:LYS:NZ	5:A:1155:HOH:O	2.29	0.65
1:A:155:GLY:H	3:A:1000:ANP:HNB1	1.47	0.60
1:A:577:LEU:HD22	1:A:594:ILE:HD11	1.86	0.58
1:A:390[A]:CYS:SG	1:A:431:VAL:HB	2.45	0.56
1:A:576:PHE:CE2	1:A:580:LEU:HD11	2.41	0.56
1:A:152:ALA:HB3	1:A:158:LYS:HD3	1.96	0.47
1:A:138:LYS:HB3	1:A:139:PRO:HD3	1.98	0.46
1:A:148:VAL:HB	1:A:302:LEU:HD22	2.00	0.43
1:A:346:VAL:HG12	1:A:502:GLN:HG2	2.00	0.43
1:A:386:THR:HG23	1:A:431:VAL:HG12	2.01	0.43

There are no symmetry-related clashes.

5.3 Torsion angles [i](#)

5.3.1 Protein backbone [i](#)

In the following table, the Percentiles column shows the percent Ramachandran outliers of the chain as a percentile score with respect to all X-ray entries followed by that with respect to entries of similar resolution.

The Analysed column shows the number of residues for which the backbone conformation was analysed, and the total number of residues.

Mol	Chain	Analysed	Favoured	Allowed	Outliers	Percentiles
1	A	512/563 (91%)	506 (99%)	5 (1%)	1 (0%)	47 38

All (1) Ramachandran outliers are listed below:

Mol	Chain	Res	Type
1	A	97	ASP

5.3.2 Protein sidechains [i](#)

In the following table, the Percentiles column shows the percent sidechain outliers of the chain as a percentile score with respect to all X-ray entries followed by that with respect to entries of similar

resolution.

The Analysed column shows the number of residues for which the sidechain conformation was analysed, and the total number of residues.

Mol	Chain	Analysed	Rotameric	Outliers	Percentiles
1	A	442/509 (87%)	438 (99%)	4 (1%)	78 79

All (4) residues with a non-rotameric sidechain are listed below:

Mol	Chain	Res	Type
1	A	146	HIS
1	A	191	ASP
1	A	205	ASP
1	A	327	PHE

Sometimes sidechains can be flipped to improve hydrogen bonding and reduce clashes. There are no such sidechains identified.

5.3.3 RNA [i](#)

Mol	Chain	Analysed	Backbone Outliers	Pucker Outliers
2	B	9/10 (90%)	4 (44%)	1 (11%)

All (4) RNA backbone outliers are listed below:

Mol	Chain	Res	Type
2	B	2	U
2	B	3	U
2	B	4	U
2	B	9	U

All (1) RNA pucker outliers are listed below:

Mol	Chain	Res	Type
2	B	3	U

5.4 Non-standard residues in protein, DNA, RNA chains [i](#)

There are no non-standard protein/DNA/RNA residues in this entry.

5.5 Carbohydrates [i](#)

There are no monosaccharides in this entry.

5.6 Ligand geometry [i](#)

Of 2 ligands modelled in this entry, 1 is monoatomic - leaving 1 for Mogul analysis.

In the following table, the Counts columns list the number of bonds (or angles) for which Mogul statistics could be retrieved, the number of bonds (or angles) that are observed in the model and the number of bonds (or angles) that are defined in the Chemical Component Dictionary. The Link column lists molecule types, if any, to which the group is linked. The Z score for a bond length (or angle) is the number of standard deviations the observed value is removed from the expected value. A bond length (or angle) with $|Z| > 2$ is considered an outlier worth inspection. RMSZ is the root-mean-square of all Z scores of the bond lengths (or angles).

Mol	Type	Chain	Res	Link	Bond lengths			Bond angles		
					Counts	RMSZ	# Z > 2	Counts	RMSZ	# Z > 2
3	ANP	A	1000	4	29,33,33	1.58	8 (27%)	31,52,52	1.74	7 (22%)

In the following table, the Chirals column lists the number of chiral outliers, the number of chiral centers analysed, the number of these observed in the model and the number defined in the Chemical Component Dictionary. Similar counts are reported in the Torsion and Rings columns. '-' means no outliers of that kind were identified.

Mol	Type	Chain	Res	Link	Chirals	Torsions	Rings
3	ANP	A	1000	4	-	3/14/38/38	0/3/3/3

All (8) bond length outliers are listed below:

Mol	Chain	Res	Type	Atoms	Z	Observed(Å)	Ideal(Å)
3	A	1000	ANP	PG-O1G	3.63	1.51	1.46
3	A	1000	ANP	PB-N3B	3.59	1.72	1.63
3	A	1000	ANP	PG-N3B	2.71	1.70	1.63
3	A	1000	ANP	PG-O3G	-2.30	1.50	1.56
3	A	1000	ANP	C2-N3	2.25	1.35	1.32
3	A	1000	ANP	PB-O1B	2.21	1.49	1.46
3	A	1000	ANP	PB-O2B	-2.14	1.51	1.56
3	A	1000	ANP	C5-C4	2.11	1.46	1.40

All (7) bond angle outliers are listed below:

Mol	Chain	Res	Type	Atoms	Z	Observed(°)	Ideal(°)
3	A	1000	ANP	O2B-PB-O1B	4.93	120.26	109.92

Continued on next page...

Continued from previous page...

Mol	Chain	Res	Type	Atoms	Z	Observed(°)	Ideal(°)
3	A	1000	ANP	N3-C2-N1	-3.91	122.56	128.68
3	A	1000	ANP	C1'-N9-C4	-3.30	120.84	126.64
3	A	1000	ANP	O3A-PB-N3B	-2.78	98.87	106.59
3	A	1000	ANP	O2G-PG-O3G	2.51	114.31	107.64
3	A	1000	ANP	C2-N1-C6	2.48	123.00	118.75
3	A	1000	ANP	O1G-PG-N3B	-2.11	108.66	111.77

There are no chirality outliers.

All (3) torsion outliers are listed below:

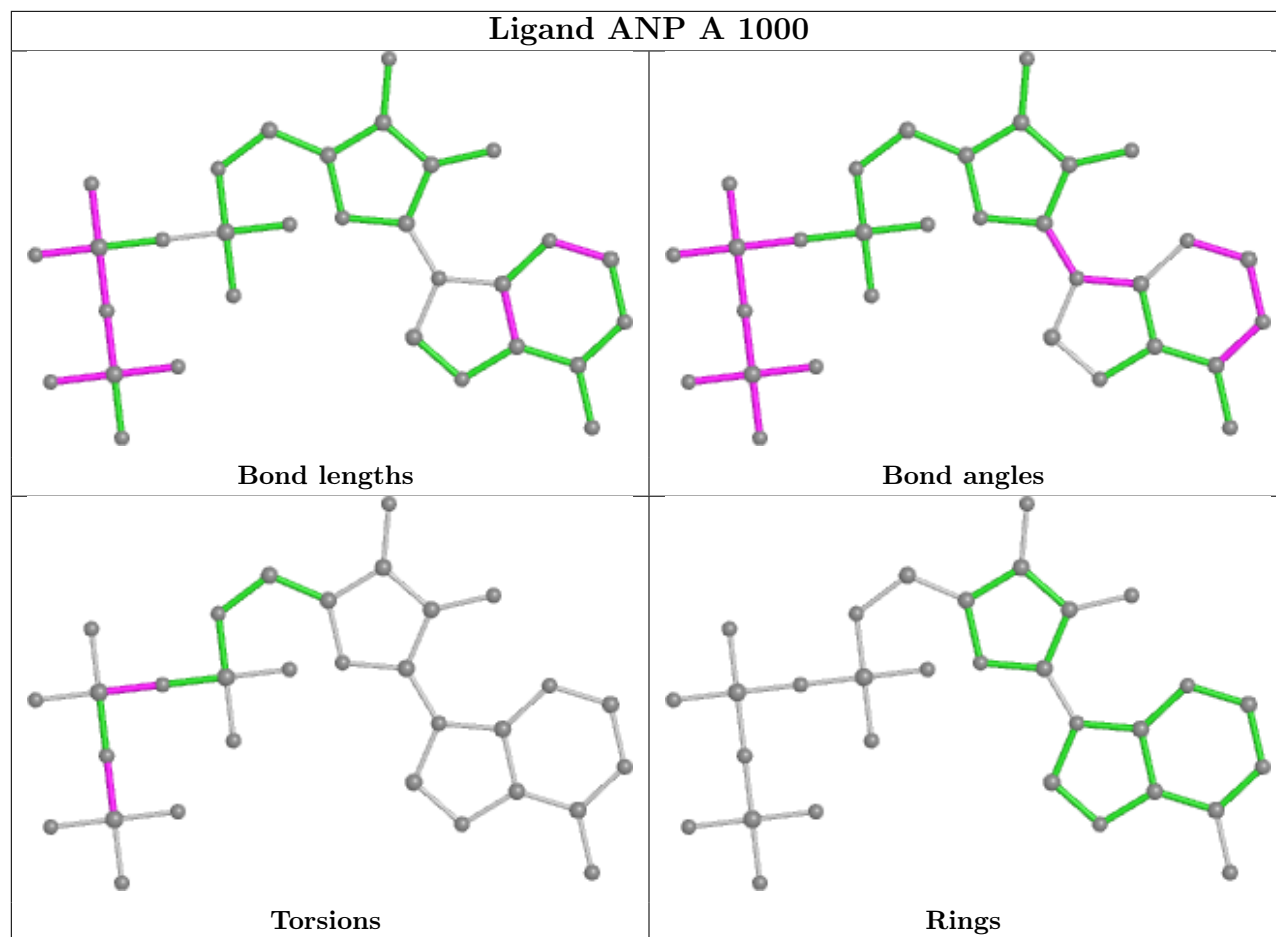
Mol	Chain	Res	Type	Atoms
3	A	1000	ANP	PB-N3B-PG-O1G
3	A	1000	ANP	PA-O3A-PB-O1B
3	A	1000	ANP	PA-O3A-PB-O2B

There are no ring outliers.

1 monomer is involved in 1 short contact:

Mol	Chain	Res	Type	Clashes	Symm-Clashes
3	A	1000	ANP	1	0

The following is a two-dimensional graphical depiction of Mogul quality analysis of bond lengths, bond angles, torsion angles, and ring geometry for all instances of the Ligand of Interest. In addition, ligands with molecular weight > 250 and outliers as shown on the validation Tables will also be included. For torsion angles, if less than 5% of the Mogul distribution of torsion angles is within 10 degrees of the torsion angle in question, then that torsion angle is considered an outlier. Any bond that is central to one or more torsion angles identified as an outlier by Mogul will be highlighted in the graph. For rings, the root-mean-square deviation (RMSD) between the ring in question and similar rings identified by Mogul is calculated over all ring torsion angles. If the average RMSD is greater than 60 degrees and the minimal RMSD between the ring in question and any Mogul-identified rings is also greater than 60 degrees, then that ring is considered an outlier. The outliers are highlighted in purple. The color gray indicates Mogul did not find sufficient equivalents in the CSD to analyse the geometry.



5.7 Other polymers [i](#)

There are no such residues in this entry.

5.8 Polymer linkage issues [i](#)

There are no chain breaks in this entry.

6 Fit of model and data

6.1 Protein, DNA and RNA chains

In the following table, the column labelled ‘#RSRZ> 2’ contains the number (and percentage) of RSRZ outliers, followed by percent RSRZ outliers for the chain as percentile scores relative to all X-ray entries and entries of similar resolution. The OWAB column contains the minimum, median, 95th percentile and maximum values of the occupancy-weighted average B-factor per residue. The column labelled ‘Q< 0.9’ lists the number of (and percentage) of residues with an average occupancy less than 0.9.

Mol	Chain	Analysed	<RSRZ>	#RSRZ>2	OWAB(Å ²)	Q<0.9
1	A	509/563 (90%)	0.65	55 (10%) 5 6	2, 16, 23, 28	0
2	B	10/10 (100%)	1.43	4 (40%) 0 0	3, 16, 37, 42	0
All	All	519/573 (90%)	0.67	59 (11%) 5 5	2, 16, 24, 42	0

All (59) RSRZ outliers are listed below:

Mol	Chain	Res	Type	RSRZ
1	A	98	ASN	8.1
1	A	185	ILE	5.4
1	A	596	ASP	5.2
2	B	9	U	4.6
1	A	594	ILE	4.5
2	B	1	U	4.4
1	A	310	ASP	4.3
1	A	97	ASP	4.2
1	A	184	VAL	4.2
1	A	99	SER	4.0
1	A	166	ILE	3.9
1	A	163	LEU	3.7
1	A	183	ALA	3.6
1	A	239	VAL	3.5
1	A	162	PHE	3.5
1	A	451	ILE	3.4
1	A	127	PRO	3.3
1	A	265	VAL	3.3
1	A	161	ALA	3.3
1	A	378	ILE	3.3
1	A	567	GLN	3.2
1	A	334	ASN	3.1
1	A	240	ILE	2.9
2	B	10	U	2.8

Continued on next page...

Continued from previous page...

Mol	Chain	Res	Type	RSRZ
1	A	238	ILE	2.8
1	A	96	GLU	2.8
1	A	175	PHE	2.7
1	A	140	ILE	2.6
1	A	449	LEU	2.6
1	A	489	ARG	2.5
2	B	2	U	2.4
1	A	379	PHE	2.4
1	A	276	GLY	2.4
1	A	580	LEU	2.4
1	A	479	PHE	2.4
1	A	101	GLU	2.4
1	A	312	VAL	2.4
1	A	377	ILE	2.4
1	A	145	ASP	2.3
1	A	493	ASP	2.3
1	A	518	ALA	2.3
1	A	302	LEU	2.3
1	A	304	PHE	2.3
1	A	453	VAL	2.3
1	A	109	GLU	2.2
1	A	100	LYS	2.2
1	A	159	THR	2.2
1	A	266	LEU	2.2
1	A	380	ALA	2.2
1	A	92	HIS	2.1
1	A	200	VAL	2.1
1	A	263	TYR	2.1
1	A	119	LYS	2.1
1	A	595	ARG	2.1
1	A	196	ILE	2.1
1	A	550	ARG	2.1
1	A	143	SER	2.0
1	A	576	PHE	2.0
1	A	205	ASP	2.0

6.2 Non-standard residues in protein, DNA, RNA chains

There are no non-standard protein/DNA/RNA residues in this entry.

6.3 Carbohydrates [i](#)

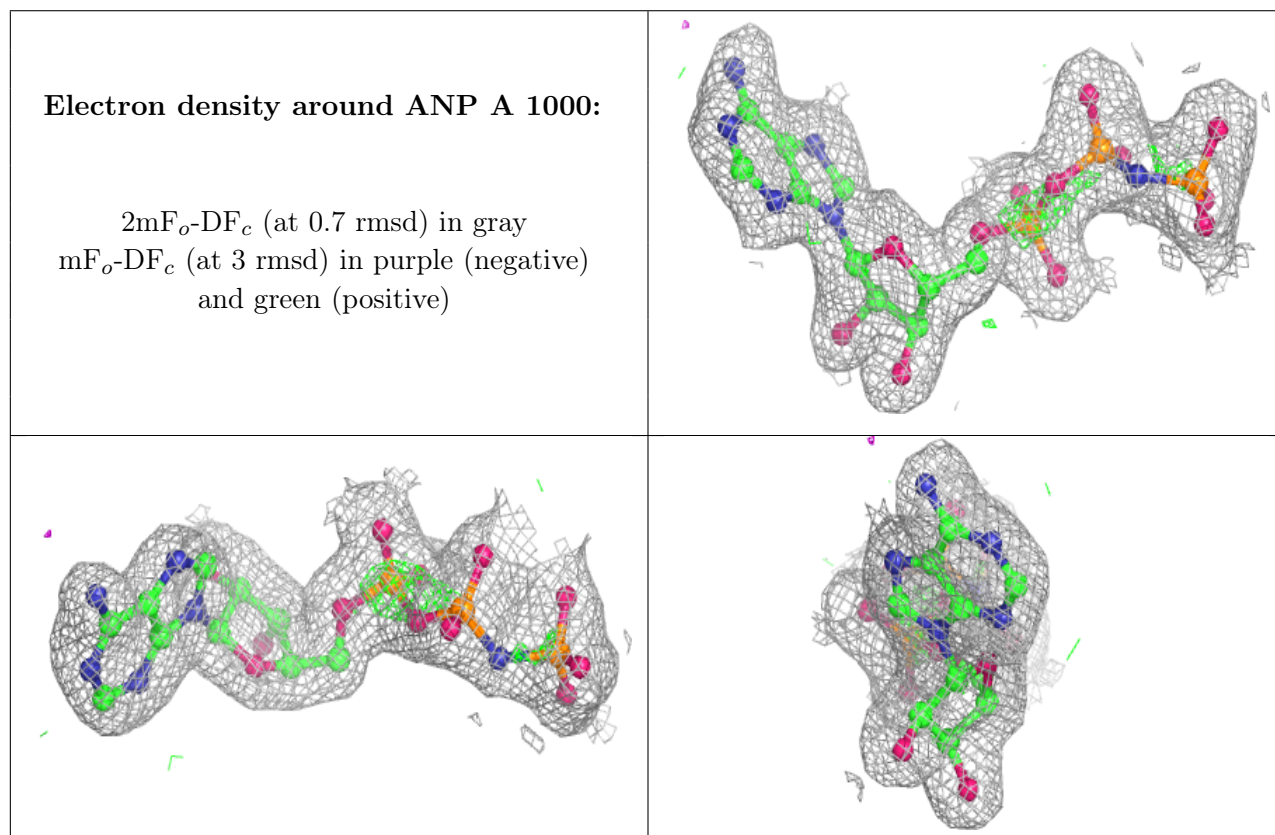
There are no monosaccharides in this entry.

6.4 Ligands [i](#)

In the following table, the Atoms column lists the number of modelled atoms in the group and the number defined in the chemical component dictionary. The B-factors column lists the minimum, median, 95th percentile and maximum values of B factors of atoms in the group. The column labelled 'Q< 0.9' lists the number of atoms with occupancy less than 0.9.

Mol	Type	Chain	Res	Atoms	RSCC	RSR	B-factors(\AA^2)	Q<0.9
4	MG	A	900	1/1	0.94	0.14	20,20,20,20	0
3	ANP	A	1000	31/31	0.97	0.11	2,8,10,12	0

The following is a graphical depiction of the model fit to experimental electron density of all instances of the Ligand of Interest. In addition, ligands with molecular weight > 250 and outliers as shown on the geometry validation Tables will also be included. Each fit is shown from different orientation to approximate a three-dimensional view.



6.5 Other polymers [i](#)

There are no such residues in this entry.