



# Full wwPDB X-ray Structure Validation Report ⓘ

Mar 9, 2023 – 03:21 pm GMT

PDB ID : 6H42  
Title : crystal structure of the human TGT catalytic subunit QTRT1  
Authors : Johannsson, S.; Neumann, P.; Ficner, R.  
Deposited on : 2018-07-20  
Resolution : 2.45 Å(reported)

This is a Full wwPDB X-ray Structure Validation Report for a publicly released PDB entry.

We welcome your comments at [validation@mail.wwpdb.org](mailto:validation@mail.wwpdb.org)

A user guide is available at

<https://www.wwpdb.org/validation/2017/XrayValidationReportHelp>

with specific help available everywhere you see the ⓘ symbol.

The types of validation reports are described at

<http://www.wwpdb.org/validation/2017/FAQs#types>.

---

The following versions of software and data (see [references ⓘ](#)) were used in the production of this report:

MolProbity : 4.02b-467  
Mogul : 1.8.4, CSD as541be (2020)  
Xtriage (Phenix) : 1.13  
EDS : 2.32.1  
Percentile statistics : 20191225.v01 (using entries in the PDB archive December 25th 2019)  
Refmac : 5.8.0158  
CCP4 : 7.0.044 (Gargrove)  
Ideal geometry (proteins) : Engh & Huber (2001)  
Ideal geometry (DNA, RNA) : Parkinson et al. (1996)  
Validation Pipeline (wwPDB-VP) : 2.32.1

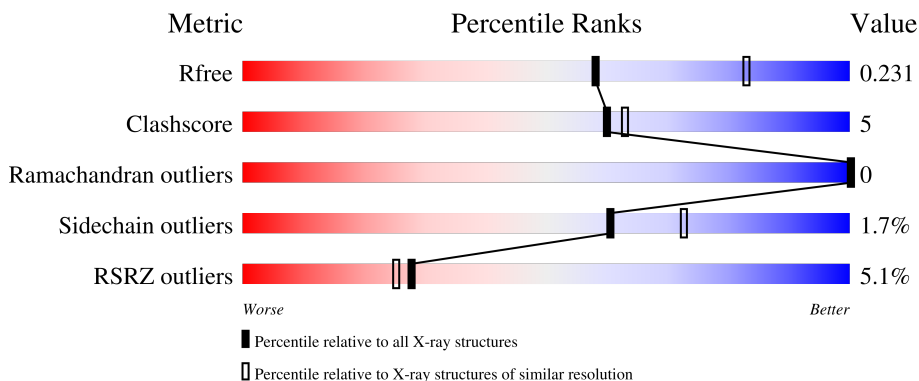
# 1 Overall quality at a glance

The following experimental techniques were used to determine the structure:

*X-RAY DIFFRACTION*

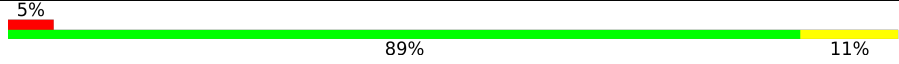
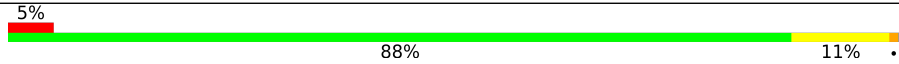
The reported resolution of this entry is 2.45 Å.

Percentile scores (ranging between 0-100) for global validation metrics of the entry are shown in the following graphic. The table shows the number of entries on which the scores are based.



Metric	Whole archive (#Entries)	Similar resolution (#Entries, resolution range(Å))
$R_{free}$	130704	1544 (2.48-2.44)
Clashscore	141614	1613 (2.48-2.44)
Ramachandran outliers	138981	1598 (2.48-2.44)
Sidechain outliers	138945	1598 (2.48-2.44)
RSRZ outliers	127900	1523 (2.48-2.44)

The table below summarises the geometric issues observed across the polymeric chains and their fit to the electron density. The red, orange, yellow and green segments of the lower bar indicate the fraction of residues that contain outliers for  $\geq 3$ , 2, 1 and 0 types of geometric quality criteria respectively. A grey segment represents the fraction of residues that are not modelled. The numeric value for each fraction is indicated below the corresponding segment, with a dot representing fractions  $\leq 5\%$ . The upper red bar (where present) indicates the fraction of residues that have poor fit to the electron density. The numeric value is given above the bar.

Mol	Chain	Length	Quality of chain
1	A	393	
1	B	393	

## 2 Entry composition [i](#)

There are 7 unique types of molecules in this entry. The entry contains 6158 atoms, of which 0 are hydrogens and 0 are deuteriums.

In the tables below, the ZeroOcc column contains the number of atoms modelled with zero occupancy, the AltConf column contains the number of residues with at least one atom in alternate conformation and the Trace column contains the number of residues modelled with at most 2 atoms.

- Molecule 1 is a protein called Queuine tRNA-ribosyltransferase catalytic subunit 1.

Mol	Chain	Residues	Atoms					ZeroOcc	AltConf	Trace
			Total	C	N	O	S			
1	A	393	Total 3028	C 1905	N 539	O 558	S 26	0	1	0
1	B	391	Total 3005	C 1892	N 534	O 553	S 26	0	0	0

- Molecule 2 is POTASSIUM ION (three-letter code: K) (formula: K).

Mol	Chain	Residues	Atoms	ZeroOcc	AltConf	
2	A	1	Total 1	K 1	0	0
2	B	1	Total 1	K 1	0	0

- Molecule 3 is ZINC ION (three-letter code: ZN) (formula: Zn).

Mol	Chain	Residues	Atoms	ZeroOcc	AltConf	
3	A	1	Total 1	Zn 1	0	0
3	B	1	Total 1	Zn 1	0	0

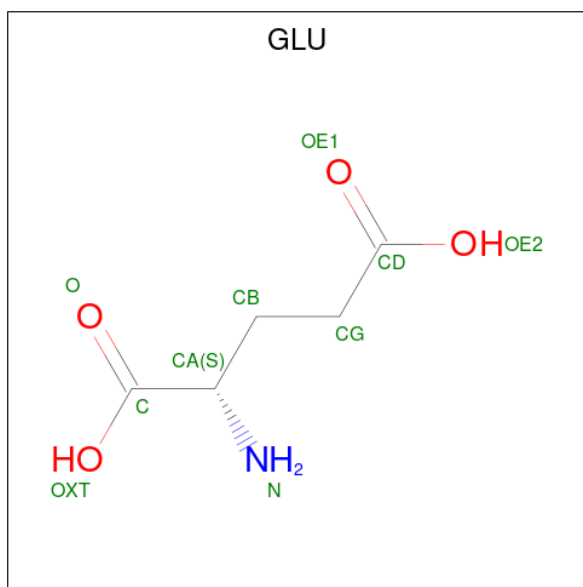
- Molecule 4 is CHLORIDE ION (three-letter code: CL) (formula: Cl).

Mol	Chain	Residues	Atoms	ZeroOcc	AltConf	
4	A	5	Total 5	Cl 5	0	0
4	B	5	Total 5	Cl 5	0	0

- Molecule 5 is BROMIDE ION (three-letter code: BR) (formula: Br).

Mol	Chain	Residues	Atoms	ZeroOcc	AltConf
5	A	1	Total Br 1 1	0	0
5	B	1	Total Br 1 1	0	0

- Molecule 6 is GLUTAMIC ACID (three-letter code: GLU) (formula: C<sub>5</sub>H<sub>9</sub>NO<sub>4</sub>).



Mol	Chain	Residues	Atoms	ZeroOcc	AltConf
6	B	1	Total C N O 10 5 1 4	0	0

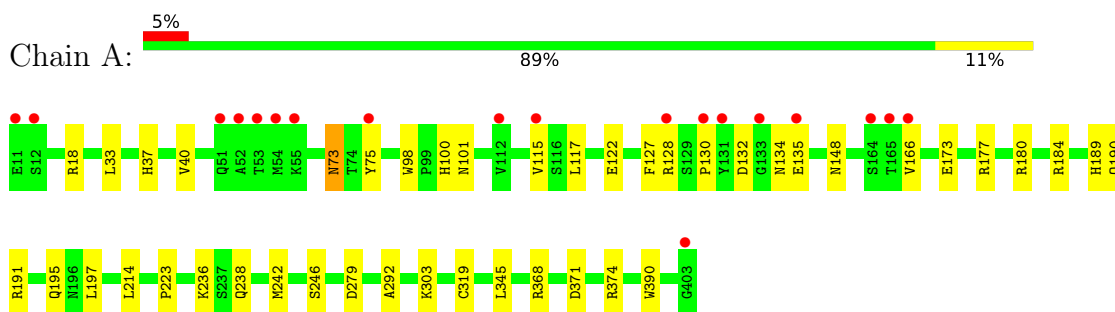
- Molecule 7 is water.

Mol	Chain	Residues	Atoms	ZeroOcc	AltConf
7	A	47	Total O 47 47	0	0
7	B	52	Total O 52 52	0	0

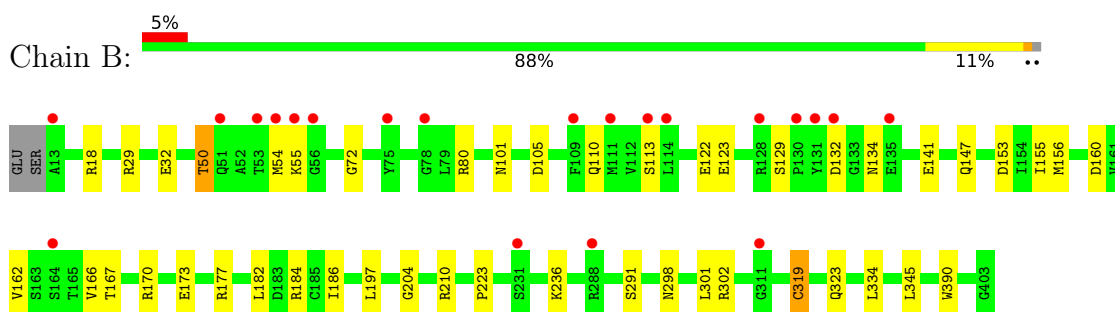
### 3 Residue-property plots [i](#)

These plots are drawn for all protein, RNA, DNA and oligosaccharide chains in the entry. The first graphic for a chain summarises the proportions of the various outlier classes displayed in the second graphic. The second graphic shows the sequence view annotated by issues in geometry and electron density. Residues are color-coded according to the number of geometric quality criteria for which they contain at least one outlier: green = 0, yellow = 1, orange = 2 and red = 3 or more. A red dot above a residue indicates a poor fit to the electron density ( $RSRZ > 2$ ). Stretches of 2 or more consecutive residues without any outlier are shown as a green connector. Residues present in the sample, but not in the model, are shown in grey.

- Molecule 1: Queuine tRNA-ribosyltransferase catalytic subunit 1



- Molecule 1: Queuine tRNA-ribosyltransferase catalytic subunit 1



## 4 Data and refinement statistics

Property	Value	Source
Space group	C 1 2 1	Depositor
Cell constants a, b, c, $\alpha$ , $\beta$ , $\gamma$	127.70Å 157.82Å 47.77Å 90.00° 108.46° 90.00°	Depositor
Resolution (Å)	48.25 – 2.45 48.25 – 2.45	Depositor EDS
% Data completeness (in resolution range)	99.8 (48.25-2.45) 99.9 (48.25-2.45)	Depositor EDS
$R_{merge}$	0.09	Depositor
$R_{sym}$	(Not available)	Depositor
$\langle I/\sigma(I) \rangle$ <sup>1</sup>	2.25 (at 2.45Å)	Xtrriage
Refinement program	PHENIX 1.13_2998	Depositor
R, $R_{free}$	0.202 , 0.231 0.202 , 0.231	Depositor DCC
$R_{free}$ test set	1645 reflections (5.01%)	wwPDB-VP
Wilson B-factor (Å <sup>2</sup> )	56.1	Xtrriage
Anisotropy	0.496	Xtrriage
Bulk solvent $k_{sol}$ (e/Å <sup>3</sup> ), $B_{sol}$ (Å <sup>2</sup> )	0.33 , 40.7	EDS
L-test for twinning <sup>2</sup>	$\langle  L  \rangle = 0.50$ , $\langle L^2 \rangle = 0.33$	Xtrriage
Estimated twinning fraction	No twinning to report.	Xtrriage
$F_o, F_c$ correlation	0.95	EDS
Total number of atoms	6158	wwPDB-VP
Average B, all atoms (Å <sup>2</sup> )	67.0	wwPDB-VP

Xtrriage's analysis on translational NCS is as follows: *The largest off-origin peak in the Patterson function is 6.70% of the height of the origin peak. No significant pseudotranslation is detected.*

<sup>1</sup>Intensities estimated from amplitudes.

<sup>2</sup>Theoretical values of  $\langle |L| \rangle$ ,  $\langle L^2 \rangle$  for acentric reflections are 0.5, 0.333 respectively for untwinned datasets, and 0.375, 0.2 for perfectly twinned datasets.

## 5 Model quality [i](#)

### 5.1 Standard geometry [i](#)

Bond lengths and bond angles in the following residue types are not validated in this section: BR, CL, ZN, K

The Z score for a bond length (or angle) is the number of standard deviations the observed value is removed from the expected value. A bond length (or angle) with  $|Z| > 5$  is considered an outlier worth inspection. RMSZ is the root-mean-square of all Z scores of the bond lengths (or angles).

Mol	Chain	Bond lengths		Bond angles	
		RMSZ	# Z  >5	RMSZ	# Z  >5
1	A	0.31	0/3096	0.46	0/4198
1	B	0.27	0/3070	0.43	0/4164
All	All	0.29	0/6166	0.45	0/8362

There are no bond length outliers.

There are no bond angle outliers.

There are no chirality outliers.

There are no planarity outliers.

### 5.2 Too-close contacts [i](#)

In the following table, the Non-H and H(model) columns list the number of non-hydrogen atoms and hydrogen atoms in the chain respectively. The H(added) column lists the number of hydrogen atoms added and optimized by MolProbity. The Clashes column lists the number of clashes within the asymmetric unit, whereas Symm-Clashes lists symmetry-related clashes.

Mol	Chain	Non-H	H(model)	H(added)	Clashes	Symm-Clashes
1	A	3028	0	3022	28	0
1	B	3005	0	2998	29	0
2	A	1	0	0	0	0
2	B	1	0	0	0	0
3	A	1	0	0	0	0
3	B	1	0	0	0	0
4	A	5	0	0	0	0
4	B	5	0	0	0	0
5	A	1	0	0	0	0
5	B	1	0	0	1	0
6	B	10	0	5	1	0

*Continued on next page...*

*Continued from previous page...*

Mol	Chain	Non-H	H(model)	H(added)	Clashes	Symm-Clashes
7	A	47	0	0	1	0
7	B	52	0	0	0	0
All	All	6158	0	6025	55	0

The all-atom clashscore is defined as the number of clashes found per 1000 atoms (including hydrogen atoms). The all-atom clashscore for this structure is 5.

All (55) close contacts within the same asymmetric unit are listed below, sorted by their clash magnitude.

Atom-1	Atom-2	Interatomic distance (Å)	Clash overlap (Å)
1:B:105:ASP:OD2	1:B:110:GLN:NE2	1.96	0.97
1:B:110:GLN:OE1	1:B:110:GLN:N	2.07	0.88
1:B:182:LEU:O	1:B:186:ILE:HG13	1.83	0.76
1:A:303:LYS:NZ	1:B:298:ASN:O	2.19	0.74
1:B:122:GLU:O	1:B:184:ARG:NH2	2.24	0.70
1:A:148:ASN:O	1:A:191:ARG:NH1	2.30	0.64
1:A:115:VAL:HG12	1:A:117:LEU:H	1.62	0.63
1:A:18:ARG:NH2	7:A:601:HOH:O	2.32	0.63
1:B:184:ARG:HD3	6:B:509:GLU:HG3	1.82	0.60
1:A:371:ASP:OD1	1:A:374:ARG:NH1	2.35	0.59
1:A:173:GLU:OE1	1:A:177:ARG:NH2	2.36	0.59
1:A:122:GLU:O	1:A:184:ARG:NH2	2.35	0.59
1:B:110:GLN:H	1:B:110:GLN:CD	2.03	0.59
1:B:105:ASP:CG	1:B:110:GLN:HE22	2.05	0.58
1:A:189:HIS:ND1	1:A:190:GLN:O	2.36	0.58
1:A:189:HIS:CE1	1:A:190:GLN:O	2.58	0.55
1:B:50:THR:HG22	1:B:72:GLY:HA2	1.89	0.55
1:B:105:ASP:HA	1:B:156:MET:HB2	1.89	0.54
1:B:141:GLU:OE1	1:B:184:ARG:NH1	2.39	0.54
1:A:122:GLU:OE2	1:A:180:ARG:NH1	2.42	0.53
1:A:127:PHE:HZ	1:A:130:PRO:HD3	1.71	0.53
1:B:101:ASN:HA	1:B:153:ASP:OD2	2.09	0.53
1:B:204:GLY:O	1:B:210:ARG:NH2	2.32	0.52
1:A:98:TRP:CE2	1:A:100:HIS:HB2	2.47	0.49
1:B:162:VAL:HG11	1:B:170:ARG:HG3	1.95	0.49
1:A:166:VAL:HG13	1:B:167:THR:HG21	1.95	0.48
1:A:37:HIS:HB2	1:A:101:ASN:OD1	2.14	0.48
1:B:173:GLU:OE1	1:B:177:ARG:NH2	2.46	0.48
1:A:33:LEU:HB2	1:A:40:VAL:HB	1.95	0.48
1:A:214:LEU:HD11	1:A:246:SER:HA	1.97	0.47
1:B:18:ARG:NH1	1:B:32:GLU:OE1	2.47	0.47

*Continued on next page...*



Continued from previous page...

Atom-1	Atom-2	Interatomic distance (Å)	Clash overlap (Å)
1:A:368[B]:ARG:HG3	1:A:371:ASP:HB2	1.96	0.46
1:A:73:ASN:HD21	1:A:75:TYR:HB3	1.81	0.46
1:B:129:SER:HB3	1:B:134:ASN:H	1.80	0.46
1:A:127:PHE:CZ	1:A:130:PRO:HD3	2.49	0.45
1:A:236:LYS:HB3	1:A:390:TRP:CG	2.52	0.45
1:B:80:ARG:NH2	1:B:132:ASP:OD2	2.50	0.45
1:B:123:GLU:HB2	5:B:508:BR:BR	2.72	0.45
1:A:132:ASP:OD1	1:A:132:ASP:N	2.50	0.44
1:A:148:ASN:HA	1:A:195:GLN:OE1	2.19	0.43
1:B:302:ARG:HG2	1:B:334:LEU:HD13	2.00	0.43
1:A:127:PHE:O	1:A:135:GLU:HA	2.19	0.42
1:B:197:LEU:O	1:B:223:PRO:HD2	2.18	0.42
1:B:291:SER:OG	1:B:298:ASN:OD1	2.34	0.42
1:A:292:ALA:HB2	1:A:345:LEU:HD22	2.01	0.42
1:B:147:GLN:HB3	1:B:155:ILE:HG21	2.01	0.42
1:A:238:GLN:O	1:A:242:MET:HG2	2.20	0.42
1:A:128:ARG:HD3	1:A:135:GLU:HB3	2.01	0.42
1:B:301:LEU:HD12	1:B:345:LEU:HD21	2.02	0.42
1:A:197:LEU:O	1:A:223:PRO:HD2	2.20	0.41
1:B:319:CYS:O	1:B:323:GLN:HG2	2.20	0.41
1:B:236:LYS:HB3	1:B:390:TRP:CG	2.56	0.41
1:B:55:LYS:HD3	1:B:55:LYS:HA	1.65	0.40
1:B:160:ASP:OD2	1:B:177:ARG:NE	2.52	0.40

There are no symmetry-related clashes.

## 5.3 Torsion angles [i](#)

### 5.3.1 Protein backbone [i](#)

In the following table, the Percentiles column shows the percent Ramachandran outliers of the chain as a percentile score with respect to all X-ray entries followed by that with respect to entries of similar resolution.

The Analysed column shows the number of residues for which the backbone conformation was analysed, and the total number of residues.

Mol	Chain	Analysed	Favoured	Allowed	Outliers	Percentiles	
1	A	392/393 (100%)	378 (96%)	14 (4%)	0	100	100
1	B	389/393 (99%)	376 (97%)	13 (3%)	0	100	100

Continued on next page...

*Continued from previous page...*

Mol	Chain	Analysed	Favoured	Allowed	Outliers	Percentiles	
All	All	781/786 (99%)	754 (96%)	27 (4%)	0	100	100

There are no Ramachandran outliers to report.

### 5.3.2 Protein sidechains [i](#)

In the following table, the Percentiles column shows the percent sidechain outliers of the chain as a percentile score with respect to all X-ray entries followed by that with respect to entries of similar resolution.

The Analysed column shows the number of residues for which the sidechain conformation was analysed, and the total number of residues.

Mol	Chain	Analysed	Rotameric	Outliers	Percentiles	
1	A	330/329 (100%)	326 (99%)	4 (1%)	71	81
1	B	327/329 (99%)	321 (98%)	6 (2%)	59	71
All	All	657/658 (100%)	647 (98%)	10 (2%)	60	76

All (10) residues with a non-rotameric sidechain are listed below:

Mol	Chain	Res	Type
1	A	73	ASN
1	A	134	ASN
1	A	279	ASP
1	A	319	CYS
1	B	29	ARG
1	B	50	THR
1	B	54	MET
1	B	113	SER
1	B	166	VAL
1	B	319	CYS

Sometimes sidechains can be flipped to improve hydrogen bonding and reduce clashes. All (2) such sidechains are listed below:

Mol	Chain	Res	Type
1	A	73	ASN
1	A	145	GLN

### 5.3.3 RNA [i](#)

There are no RNA molecules in this entry.

## 5.4 Non-standard residues in protein, DNA, RNA chains [i](#)

There are no non-standard protein/DNA/RNA residues in this entry.

## 5.5 Carbohydrates [i](#)

There are no monosaccharides in this entry.

## 5.6 Ligand geometry [i](#)

Of 17 ligands modelled in this entry, 16 are monoatomic - leaving 1 for Mogul analysis.

In the following table, the Counts columns list the number of bonds (or angles) for which Mogul statistics could be retrieved, the number of bonds (or angles) that are observed in the model and the number of bonds (or angles) that are defined in the Chemical Component Dictionary. The Link column lists molecule types, if any, to which the group is linked. The Z score for a bond length (or angle) is the number of standard deviations the observed value is removed from the expected value. A bond length (or angle) with  $|Z| > 2$  is considered an outlier worth inspection. RMSZ is the root-mean-square of all Z scores of the bond lengths (or angles).

Mol	Type	Chain	Res	Link	Bond lengths			Bond angles		
					Counts	RMSZ	$\# Z  > 2$	Counts	RMSZ	$\# Z  > 2$
6	GLU	B	509	-	8,9,9	1.04	0	10,11,11	1.30	1 (10%)

In the following table, the Chirals column lists the number of chiral outliers, the number of chiral centers analysed, the number of these observed in the model and the number defined in the Chemical Component Dictionary. Similar counts are reported in the Torsion and Rings columns. '-' means no outliers of that kind were identified.

Mol	Type	Chain	Res	Link	Chirals	Torsions	Rings
6	GLU	B	509	-	-	6/9/9/9	-

There are no bond length outliers.

All (1) bond angle outliers are listed below:

Mol	Chain	Res	Type	Atoms	Z	Observed( $^{\circ}$ )	Ideal( $^{\circ}$ )
6	B	509	GLU	OE2-CD-CG	2.03	120.55	114.03

There are no chirality outliers.

All (6) torsion outliers are listed below:

Mol	Chain	Res	Type	Atoms
6	B	509	GLU	N-CA-CB-CG
6	B	509	GLU	C-CA-CB-CG
6	B	509	GLU	O-C-CA-CB
6	B	509	GLU	OXT-C-CA-CB
6	B	509	GLU	OE1-CD-CG-CB
6	B	509	GLU	OE2-CD-CG-CB

There are no ring outliers.

1 monomer is involved in 1 short contact:

Mol	Chain	Res	Type	Clashes	Symm-Clashes
6	B	509	GLU	1	0

## 5.7 Other polymers [i](#)

There are no such residues in this entry.

## 5.8 Polymer linkage issues [i](#)

There are no chain breaks in this entry.

## 6 Fit of model and data

### 6.1 Protein, DNA and RNA chains

In the following table, the column labelled ‘#RSRZ > 2’ contains the number (and percentage) of RSRZ outliers, followed by percent RSRZ outliers for the chain as percentile scores relative to all X-ray entries and entries of similar resolution. The OWAB column contains the minimum, median, 95<sup>th</sup> percentile and maximum values of the occupancy-weighted average B-factor per residue. The column labelled ‘Q < 0.9’ lists the number of (and percentage) of residues with an average occupancy less than 0.9.

Mol	Chain	Analysed	<RSRZ>	#RSRZ>2	OWAB(Å <sup>2</sup> )	Q<0.9
1	A	393/393 (100%)	0.36	19 (4%) 30 28	40, 58, 119, 172	0
1	B	391/393 (99%)	0.46	21 (5%) 25 23	43, 65, 123, 166	0
All	All	784/786 (99%)	0.41	40 (5%) 28 25	40, 60, 123, 172	0

All (40) RSRZ outliers are listed below:

Mol	Chain	Res	Type	RSRZ
1	B	54	MET	13.6
1	A	53	THR	5.2
1	B	128	ARG	5.2
1	B	75	TYR	4.9
1	B	109	PHE	4.8
1	B	114	LEU	4.7
1	B	55	LYS	4.6
1	B	164	SER	4.5
1	A	133	GLY	4.0
1	A	164	SER	3.8
1	B	56	GLY	3.6
1	B	113	SER	3.6
1	A	128	ARG	3.5
1	A	130	PRO	3.2
1	B	53	THR	3.1
1	A	12	SER	3.1
1	B	130	PRO	3.1
1	A	403	GLY	3.1
1	A	54	MET	3.0
1	A	11	GLU	3.0
1	A	52	ALA	3.0
1	A	51	GLN	2.9
1	B	135	GLU	2.9
1	A	112	VAL	2.9

*Continued on next page...*

*Continued from previous page...*

Mol	Chain	Res	Type	RSRZ
1	A	135	GLU	2.8
1	B	311	GLY	2.8
1	B	111	MET	2.8
1	B	288	ARG	2.7
1	A	115	VAL	2.7
1	A	131	TYR	2.6
1	B	231	SER	2.6
1	A	166	VAL	2.5
1	B	51	GLN	2.5
1	B	131	TYR	2.4
1	A	75	TYR	2.3
1	B	13	ALA	2.1
1	B	132	ASP	2.0
1	A	55	LYS	2.0
1	B	78	GLY	2.0
1	A	165	THR	2.0

## 6.2 Non-standard residues in protein, DNA, RNA chains [i](#)

There are no non-standard protein/DNA/RNA residues in this entry.

## 6.3 Carbohydrates [i](#)

There are no monosaccharides in this entry.

## 6.4 Ligands [i](#)

In the following table, the Atoms column lists the number of modelled atoms in the group and the number defined in the chemical component dictionary. The B-factors column lists the minimum, median, 95<sup>th</sup> percentile and maximum values of B factors of atoms in the group. The column labelled 'Q< 0.9' lists the number of atoms with occupancy less than 0.9.

Mol	Type	Chain	Res	Atoms	RSCC	RSR	B-factors(Å <sup>2</sup> )	Q<0.9
5	BR	B	508	1/1	0.60	0.17	131,131,131,131	1
6	GLU	B	509	10/10	0.80	0.25	87,90,94,95	10
4	CL	A	505	1/1	0.83	0.17	69,69,69,69	0
2	K	A	501	1/1	0.87	0.10	57,57,57,57	0
5	BR	A	508	1/1	0.92	0.17	127,127,127,127	1
4	CL	B	504	1/1	0.94	0.20	74,74,74,74	0
2	K	B	501	1/1	0.95	0.08	66,66,66,66	0

*Continued on next page...*

*Continued from previous page...*

Mol	Type	Chain	Res	Atoms	RSCC	RSR	B-factors( $\text{\AA}^2$ )	Q<0.9
4	CL	A	507	1/1	0.95	0.30	53,53,53,53	0
4	CL	A	503	1/1	0.95	0.20	77,77,77,77	0
4	CL	B	505	1/1	0.96	0.17	68,68,68,68	0
4	CL	A	504	1/1	0.96	0.16	70,70,70,70	0
4	CL	B	503	1/1	0.97	0.11	60,60,60,60	0
4	CL	B	507	1/1	0.99	0.12	51,51,51,51	1
3	ZN	A	502	1/1	0.99	0.15	50,50,50,50	0
4	CL	A	506	1/1	0.99	0.11	45,45,45,45	1
4	CL	B	506	1/1	0.99	0.27	54,54,54,54	0
3	ZN	B	502	1/1	1.00	0.14	52,52,52,52	0

## 6.5 Other polymers [i](#)

There are no such residues in this entry.