



# wwPDB X-ray Structure Validation Summary Report ⓘ

Jan 31, 2024 – 02:08 PM EST

PDB ID : 8FMF  
Title : Structure of CBASS Cap5 from *Pseudomonas syringae* as an activated tetramer with the cyclic dinucleotide 3'2'-c-diAMP ligand (1 tetramer in the AU)  
Authors : Rechkoblit, O.; Kreitler, D.F.; Aggarwal, A.K.  
Deposited on : 2022-12-23  
Resolution : 2.10 Å(reported)

This is a wwPDB X-ray Structure Validation Summary Report for a publicly released PDB entry.

We welcome your comments at [validation@mail.wwpdb.org](mailto:validation@mail.wwpdb.org)

A user guide is available at

<https://www.wwpdb.org/validation/2017/XrayValidationReportHelp>

with specific help available everywhere you see the ⓘ symbol.

The types of validation reports are described at

<http://www.wwpdb.org/validation/2017/FAQs#types>.

---

The following versions of software and data (see [references ⓘ](#)) were used in the production of this report:

MolProbity : 4.02b-467  
Mogul : 1.8.5 (274361), CSD as541be (2020)  
Xtriage (Phenix) : 1.13  
EDS : 2.36  
buster-report : 1.1.7 (2018)  
Percentile statistics : 20191225.v01 (using entries in the PDB archive December 25th 2019)  
Refmac : 5.8.0158  
CCP4 : 7.0.044 (Gargrove)  
Ideal geometry (proteins) : Engh & Huber (2001)  
Ideal geometry (DNA, RNA) : Parkinson et al. (1996)  
Validation Pipeline (wwPDB-VP) : 2.36

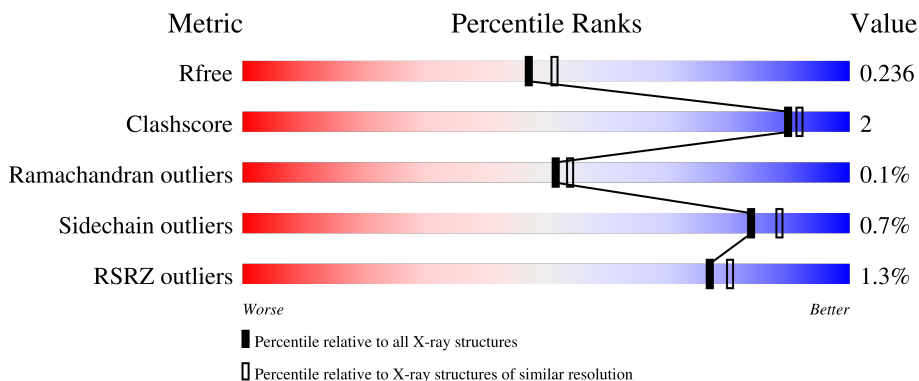
# 1 Overall quality at a glance

The following experimental techniques were used to determine the structure:

*X-RAY DIFFRACTION*

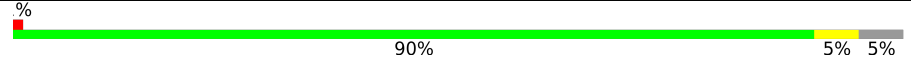

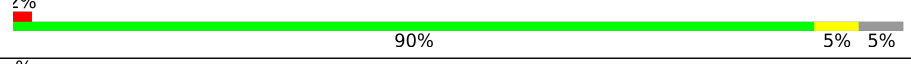

The reported resolution of this entry is 2.10 Å.

Percentile scores (ranging between 0-100) for global validation metrics of the entry are shown in the following graphic. The table shows the number of entries on which the scores are based.



Metric	Whole archive (#Entries)	Similar resolution (#Entries, resolution range(Å))
$R_{free}$	130704	5197 (2.10-2.10)
Clashscore	141614	5710 (2.10-2.10)
Ramachandran outliers	138981	5647 (2.10-2.10)
Sidechain outliers	138945	5648 (2.10-2.10)
RSRZ outliers	127900	5083 (2.10-2.10)

The table below summarises the geometric issues observed across the polymeric chains and their fit to the electron density. The red, orange, yellow and green segments of the lower bar indicate the fraction of residues that contain outliers for  $\geq 3$ , 2, 1 and 0 types of geometric quality criteria respectively. A grey segment represents the fraction of residues that are not modelled. The numeric value for each fraction is indicated below the corresponding segment, with a dot representing fractions  $\leq 5\%$ . The upper red bar (where present) indicates the fraction of residues that have poor fit to the electron density. The numeric value is given above the bar.

Mol	Chain	Length	Quality of chain
1	A	388	
1	B	388	
1	C	388	
1	D	388	

## 2 Entry composition [i](#)

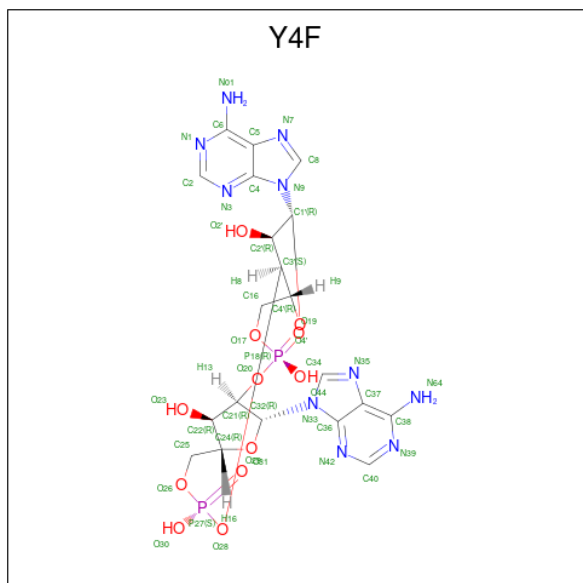
There are 8 unique types of molecules in this entry. The entry contains 22917 atoms, of which 11060 are hydrogens and 0 are deuteriums.

In the tables below, the ZeroOcc column contains the number of atoms modelled with zero occupancy, the AltConf column contains the number of residues with at least one atom in alternate conformation and the Trace column contains the number of residues modelled with at most 2 atoms.

- Molecule 1 is a protein called SAVED domain-containing protein.

Mol	Chain	Residues	Atoms					ZeroOcc	AltConf	Trace	
			Total	C	H	N	O				S
1	A	369	Total	C	H	N	O	S	0	0	0
			5627	1795	2778	510	534	10			
1	B	352	Total	C	H	N	O	S	0	0	0
			5347	1712	2644	474	507	10			
1	C	368	Total	C	H	N	O	S	0	0	0
			5588	1783	2756	509	530	10			
1	D	355	Total	C	H	N	O	S	0	0	0
			5416	1734	2676	483	513	10			

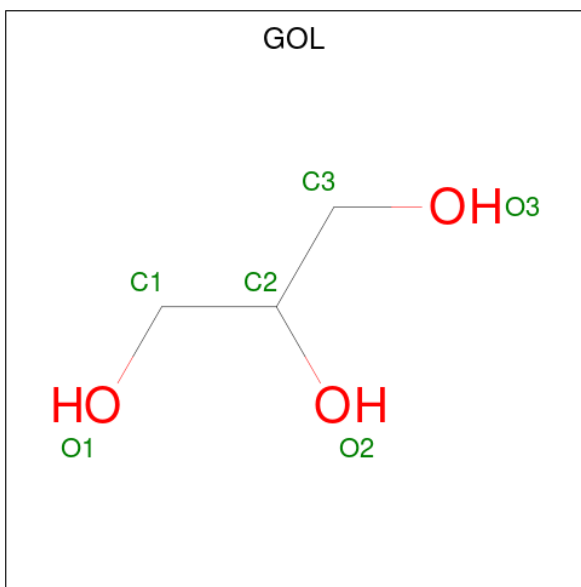
- Molecule 2 is Cyclic (adenosine-(2'-5')-monophosphate-adenosine-(3'-5')-monophosphate (three-letter code: Y4F) (formula: C<sub>20</sub>H<sub>24</sub>N<sub>10</sub>O<sub>12</sub>P<sub>2</sub>) (labeled as "Ligand of Interest" by depositor).



Continued from previous page...

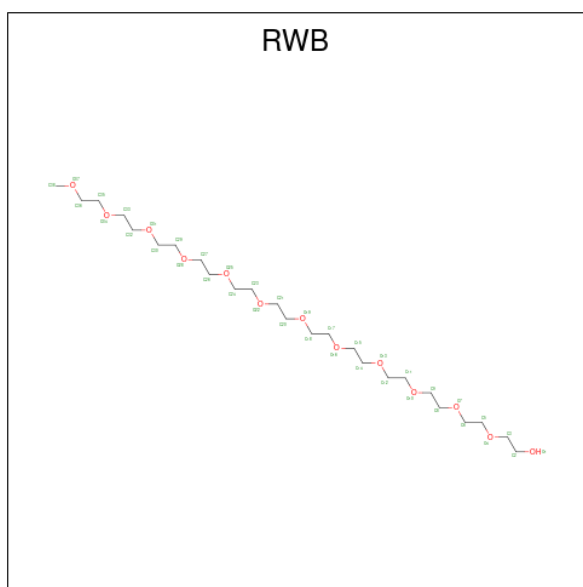
Mol	Chain	Residues	Atoms					ZeroOcc	AltConf	
2	B	1	Total	C	H	N	O	P	0	0
			65	20	21	10	12	2		
2	C	1	Total	C	H	N	O	P	0	0
			65	20	21	10	12	2		
2	D	1	Total	C	H	N	O	P	0	0
			65	20	21	10	12	2		

- Molecule 3 is GLYCEROL (three-letter code: GOL) (formula:  $C_3H_8O_3$ ).



Mol	Chain	Residues	Atoms			ZeroOcc	AltConf	
3	A	1	Total	C	H	O	0	0
			14	3	8	3		
3	A	1	Total	C	H	O	0	0
			14	3	8	3		
3	A	1	Total	C	H	O	0	0
			14	3	8	3		
3	A	1	Total	C	H	O	0	0
			14	3	8	3		
3	B	1	Total	C	H	O	0	0
			14	3	8	3		
3	D	1	Total	C	H	O	0	0
			14	3	8	3		

- Molecule 4 is dodecaethylene glycol monomethyl ether (three-letter code: RWB) (formula:  $C_{25}H_{52}O_{13}$ ).



Mol	Chain	Residues	Atoms				ZeroOcc	AltConf
4	A	1	Total	C	H	O	0	0
			86	25	48	13		

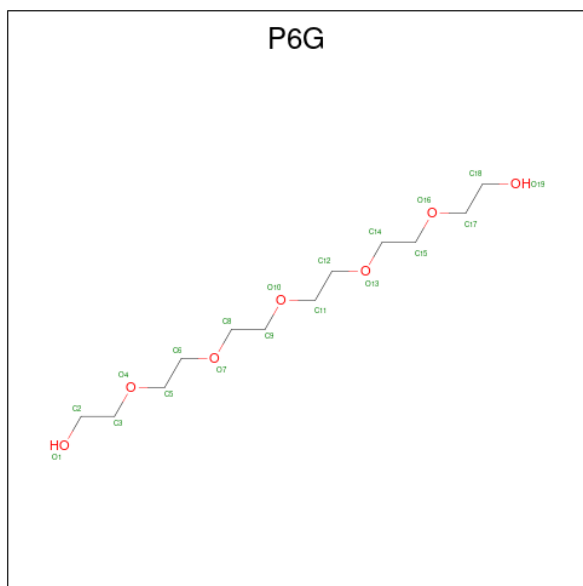
- Molecule 5 is ZINC ION (three-letter code: ZN) (formula: Zn).

Mol	Chain	Residues	Atoms		ZeroOcc	AltConf
5	A	1	Total	Zn	0	0
			1	1		
5	B	1	Total	Zn	0	0
			1	1		
5	C	1	Total	Zn	0	0
			1	1		
5	D	1	Total	Zn	0	0
			1	1		

- Molecule 6 is MAGNESIUM ION (three-letter code: MG) (formula: Mg).

Mol	Chain	Residues	Atoms		ZeroOcc	AltConf
6	A	2	Total	Mg	0	0
			2	2		
6	B	1	Total	Mg	0	0
			1	1		
6	C	2	Total	Mg	0	0
			2	2		
6	D	2	Total	Mg	0	0
			2	2		

- Molecule 7 is HEXAETHYLENE GLYCOL (three-letter code: P6G) (formula:  $C_{12}H_{26}O_7$ ).



Mol	Chain	Residues	Atoms			ZeroOcc	AltConf	
			Total	C	H			O
7	C	1	45	12	26	7	0	0

- Molecule 8 is water.

Mol	Chain	Residues	Atoms		ZeroOcc	AltConf
8	A	144	Total	O	0	0
			144	144		
8	B	84	Total	O	0	0
			84	84		
8	C	121	Total	O	0	0
			121	121		
8	D	104	Total	O	0	0
			104	104		



## 4 Data and refinement statistics i

Property	Value	Source
Space group	P 32 2 1	Depositor
Cell constants a, b, c, $\alpha$ , $\beta$ , $\gamma$	83.54Å 83.54Å 401.96Å 90.00° 90.00° 120.00°	Depositor
Resolution (Å)	66.99 – 2.10 133.99 – 2.10	Depositor EDS
% Data completeness (in resolution range)	66.8 (66.99-2.10) 66.9 (133.99-2.10)	Depositor EDS
$R_{merge}$	0.25	Depositor
$R_{sym}$	(Not available)	Depositor
$\langle I/\sigma(I) \rangle$ <sup>1</sup>	1.99 (at 2.10Å)	Xtrriage
Refinement program	PHENIX 1.20.1_4487, PHENIX 1.20.1_4487	Depositor
R, $R_{free}$	0.190 , 0.237 0.192 , 0.236	Depositor DCC
$R_{free}$ test set	3210 reflections (5.00%)	wwPDB-VP
Wilson B-factor (Å <sup>2</sup> )	31.7	Xtrriage
Anisotropy	0.102	Xtrriage
Bulk solvent $k_{sol}$ (e/Å <sup>3</sup> ), $B_{sol}$ (Å <sup>2</sup> )	0.43 , 41.9	EDS
L-test for twinning <sup>2</sup>	$\langle  L  \rangle = 0.49$ , $\langle L^2 \rangle = 0.32$	Xtrriage
Estimated twinning fraction	0.032 for -h,-k,l	Xtrriage
$F_o, F_c$ correlation	0.94	EDS
Total number of atoms	22917	wwPDB-VP
Average B, all atoms (Å <sup>2</sup> )	44.0	wwPDB-VP

Xtrriage's analysis on translational NCS is as follows: *The largest off-origin peak in the Patterson function is 3.42% of the height of the origin peak. No significant pseudotranslation is detected.*

<sup>1</sup>Intensities estimated from amplitudes.

<sup>2</sup>Theoretical values of  $\langle |L| \rangle$ ,  $\langle L^2 \rangle$  for acentric reflections are 0.5, 0.333 respectively for untwinned datasets, and 0.375, 0.2 for perfectly twinned datasets.



## 5 Model quality [i](#)

### 5.1 Standard geometry [i](#)

Bond lengths and bond angles in the following residue types are not validated in this section: GOL, ZN, P6G, RWB, Y4F, MG

The Z score for a bond length (or angle) is the number of standard deviations the observed value is removed from the expected value. A bond length (or angle) with  $|Z| > 5$  is considered an outlier worth inspection. RMSZ is the root-mean-square of all Z scores of the bond lengths (or angles).

Mol	Chain	Bond lengths		Bond angles	
		RMSZ	# Z  >5	RMSZ	# Z  >5
1	A	0.27	0/2919	0.49	0/3981
1	B	0.29	0/2768	0.50	0/3777
1	C	0.25	0/2901	0.50	0/3957
1	D	0.26	0/2806	0.49	0/3827
All	All	0.27	0/11394	0.49	0/15542

There are no bond length outliers.

There are no bond angle outliers.

There are no chirality outliers.

There are no planarity outliers.

### 5.2 Too-close contacts [i](#)

In the following table, the Non-H and H(model) columns list the number of non-hydrogen atoms and hydrogen atoms in the chain respectively. The H(added) column lists the number of hydrogen atoms added and optimized by MolProbity. The Clashes column lists the number of clashes within the asymmetric unit, whereas Symm-Clashes lists symmetry-related clashes.

Mol	Chain	Non-H	H(model)	H(added)	Clashes	Symm-Clashes
1	A	2849	2778	2777	14	0
1	B	2703	2644	2640	16	0
1	C	2832	2756	2755	11	0
1	D	2740	2676	2674	7	0
2	A	44	21	0	0	0
2	B	44	21	0	0	0
2	C	44	21	0	0	0
2	D	44	21	0	0	0
3	A	24	32	32	0	0

*Continued on next page...*

Continued from previous page...

Mol	Chain	Non-H	H(model)	H(added)	Clashes	Symm-Clashes
3	B	6	8	8	0	0
3	D	6	8	8	0	0
4	A	38	48	0	0	0
5	A	1	0	0	0	0
5	B	1	0	0	0	0
5	C	1	0	0	0	0
5	D	1	0	0	0	0
6	A	2	0	0	0	0
6	B	1	0	0	0	0
6	C	2	0	0	0	0
6	D	2	0	0	0	0
7	C	19	26	26	0	0
8	A	144	0	0	0	0
8	B	84	0	0	1	0
8	C	121	0	0	0	0
8	D	104	0	0	0	0
All	All	11857	11060	10920	41	0

The all-atom clashscore is defined as the number of clashes found per 1000 atoms (including hydrogen atoms). The all-atom clashscore for this structure is 2.

The worst 5 of 41 close contacts within the same asymmetric unit are listed below, sorted by their clash magnitude.

Atom-1	Atom-2	Interatomic distance (Å)	Clash overlap (Å)
1:D:43:TYR:HB2	1:D:49:MET:HG2	1.81	0.63
1:C:258:PHE:HB3	1:C:297:LEU:HD11	1.81	0.63
1:A:317:ARG:HG3	1:A:352:LEU:HD21	1.85	0.58
1:A:200:ARG:HG2	1:D:192:TYR:HB2	1.89	0.54
1:D:39:LEU:HD13	1:D:55:ALA:HB2	1.89	0.54

There are no symmetry-related clashes.

## 5.3 Torsion angles [i](#)

### 5.3.1 Protein backbone [i](#)

In the following table, the Percentiles column shows the percent Ramachandran outliers of the chain as a percentile score with respect to all X-ray entries followed by that with respect to entries of similar resolution.

The Analysed column shows the number of residues for which the backbone conformation was analysed, and the total number of residues.

Mol	Chain	Analysed	Favoured	Allowed	Outliers	Percentiles	
1	A	367/388 (95%)	350 (95%)	17 (5%)	0	100	100
1	B	348/388 (90%)	340 (98%)	8 (2%)	0	100	100
1	C	366/388 (94%)	349 (95%)	16 (4%)	1 (0%)	41	41
1	D	351/388 (90%)	339 (97%)	12 (3%)	0	100	100
All	All	1432/1552 (92%)	1378 (96%)	53 (4%)	1 (0%)	51	54

All (1) Ramachandran outliers are listed below:

Mol	Chain	Res	Type
1	C	232	ARG

### 5.3.2 Protein sidechains [i](#)

In the following table, the Percentiles column shows the percent sidechain outliers of the chain as a percentile score with respect to all X-ray entries followed by that with respect to entries of similar resolution.

The Analysed column shows the number of residues for which the sidechain conformation was analysed, and the total number of residues.

Mol	Chain	Analysed	Rotameric	Outliers	Percentiles	
1	A	299/317 (94%)	299 (100%)	0	100	100
1	B	284/317 (90%)	281 (99%)	3 (1%)	73	79
1	C	295/317 (93%)	293 (99%)	2 (1%)	84	88
1	D	288/317 (91%)	285 (99%)	3 (1%)	76	82
All	All	1166/1268 (92%)	1158 (99%)	8 (1%)	84	88

5 of 8 residues with a non-rotameric sidechain are listed below:

Mol	Chain	Res	Type
1	D	349	PHE
1	D	235	ARG
1	C	370	ASN
1	C	349	PHE
1	D	50	LYS

Sometimes sidechains can be flipped to improve hydrogen bonding and reduce clashes. There are

no such sidechains identified.

### 5.3.3 RNA [i](#)

There are no RNA molecules in this entry.

## 5.4 Non-standard residues in protein, DNA, RNA chains [i](#)

There are no non-standard protein/DNA/RNA residues in this entry.

## 5.5 Carbohydrates [i](#)

There are no monosaccharides in this entry.

## 5.6 Ligand geometry [i](#)

Of 23 ligands modelled in this entry, 11 are monoatomic - leaving 12 for Mogul analysis.

In the following table, the Counts columns list the number of bonds (or angles) for which Mogul statistics could be retrieved, the number of bonds (or angles) that are observed in the model and the number of bonds (or angles) that are defined in the Chemical Component Dictionary. The Link column lists molecule types, if any, to which the group is linked. The Z score for a bond length (or angle) is the number of standard deviations the observed value is removed from the expected value. A bond length (or angle) with  $|Z| > 2$  is considered an outlier worth inspection. RMSZ is the root-mean-square of all Z scores of the bond lengths (or angles).

Mol	Type	Chain	Res	Link	Bond lengths			Bond angles		
					Counts	RMSZ	# Z  > 2	Counts	RMSZ	# Z  > 2
3	GOL	A	403	-	5,5,5	0.95	0	5,5,5	0.90	0
2	Y4F	A	401	-	43,50,50	0.72	1 (2%)	50,78,78	1.04	3 (6%)
2	Y4F	B	401	-	43,50,50	0.74	1 (2%)	50,78,78	1.08	4 (8%)
4	RWB	A	406	-	37,37,37	0.21	0	36,36,36	0.20	0
2	Y4F	D	401	-	43,50,50	0.77	1 (2%)	50,78,78	1.14	4 (8%)
3	GOL	A	405	-	5,5,5	0.89	0	5,5,5	0.98	0
3	GOL	D	402	-	5,5,5	0.96	0	5,5,5	1.00	0
3	GOL	A	404	-	5,5,5	1.00	0	5,5,5	1.09	0
7	P6G	C	402	-	18,18,18	0.14	0	17,17,17	0.21	0
2	Y4F	C	401	-	43,50,50	0.72	1 (2%)	50,78,78	1.08	3 (6%)
3	GOL	A	402	-	5,5,5	1.01	0	5,5,5	1.08	1 (20%)
3	GOL	B	402	-	5,5,5	0.91	0	5,5,5	0.94	0

In the following table, the Chirals column lists the number of chiral outliers, the number of chiral

centers analysed, the number of these observed in the model and the number defined in the Chemical Component Dictionary. Similar counts are reported in the Torsion and Rings columns. '2' means no outliers of that kind were identified.

Mol	Type	Chain	Res	Link	Chirals	Torsions	Rings
3	GOL	A	403	-	-	2/4/4/4	-
2	Y4F	A	401	-	-	5/22/62/62	0/6/7/7
2	Y4F	B	401	-	-	1/22/62/62	0/6/7/7
4	RWB	A	406	-	-	16/35/35/35	-
2	Y4F	D	401	-	-	2/22/62/62	0/6/7/7
3	GOL	A	405	-	-	2/4/4/4	-
3	GOL	D	402	-	-	0/4/4/4	-
3	GOL	A	404	-	-	2/4/4/4	-
7	P6G	C	402	-	-	7/16/16/16	-
2	Y4F	C	401	-	-	5/22/62/62	0/6/7/7
3	GOL	A	402	-	-	1/4/4/4	-
3	GOL	B	402	-	-	2/4/4/4	-

All (4) bond length outliers are listed below:

Mol	Chain	Res	Type	Atoms	Z	Observed(Å)	Ideal(Å)
2	B	401	Y4F	C40-N42	2.95	1.36	1.32
2	D	401	Y4F	C40-N42	2.94	1.36	1.32
2	A	401	Y4F	C40-N42	2.84	1.36	1.32
2	C	401	Y4F	C40-N42	2.81	1.36	1.32

The worst 5 of 15 bond angle outliers are listed below:

Mol	Chain	Res	Type	Atoms	Z	Observed(°)	Ideal(°)
2	B	401	Y4F	N42-C40-N39	-4.18	122.14	128.68
2	C	401	Y4F	N42-C40-N39	-4.18	122.15	128.68
2	D	401	Y4F	N42-C40-N39	-4.17	122.15	128.68
2	A	401	Y4F	N42-C40-N39	-4.12	122.23	128.68
2	B	401	Y4F	P18-O20-C21	-2.76	109.37	119.41

There are no chirality outliers.

5 of 45 torsion outliers are listed below:

Mol	Chain	Res	Type	Atoms
2	A	401	Y4F	C3'-O28-P27-O30
2	C	401	Y4F	C3'-O28-P27-O30
3	A	403	GOL	O1-C1-C2-C3

*Continued on next page...*

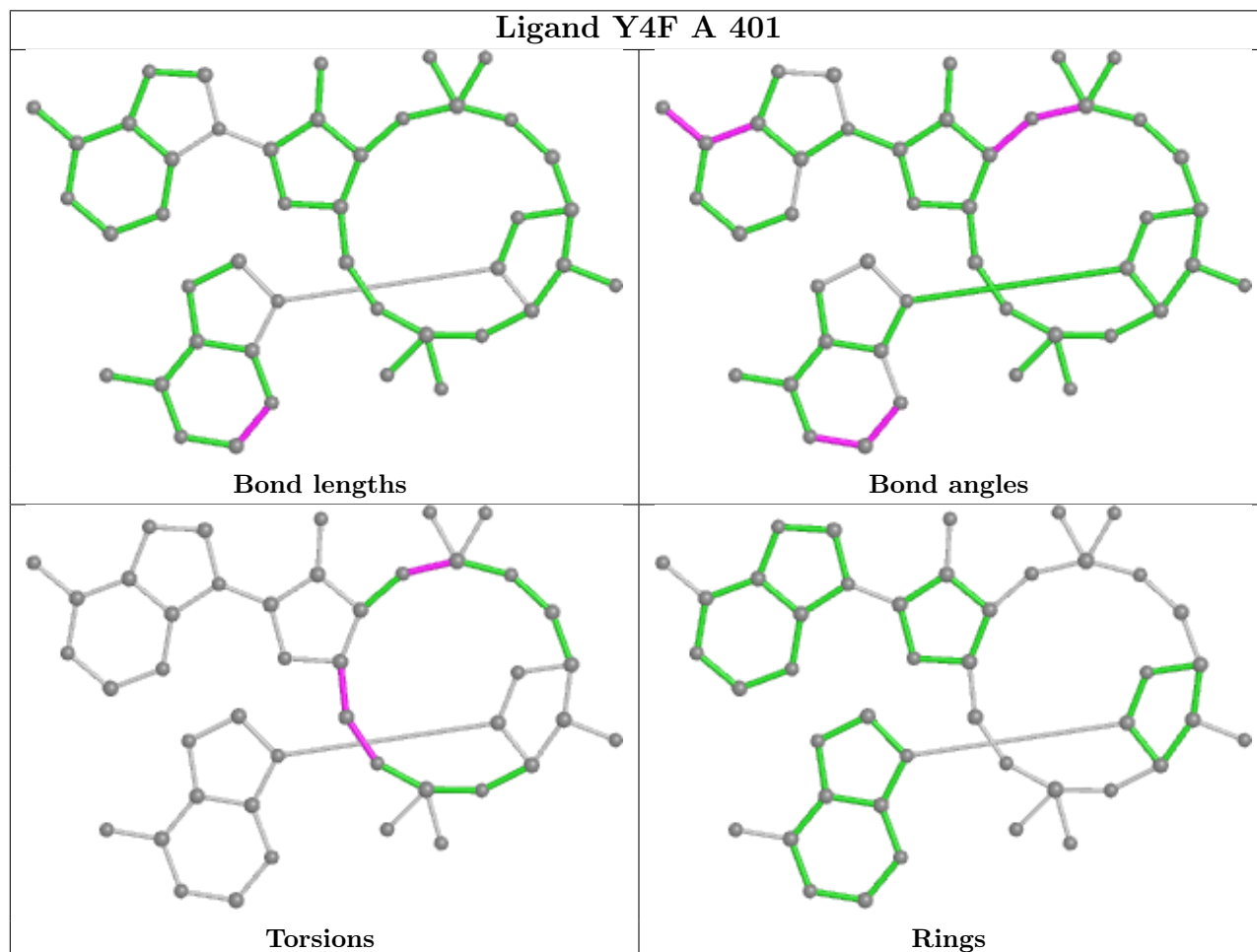
Continued from previous page...

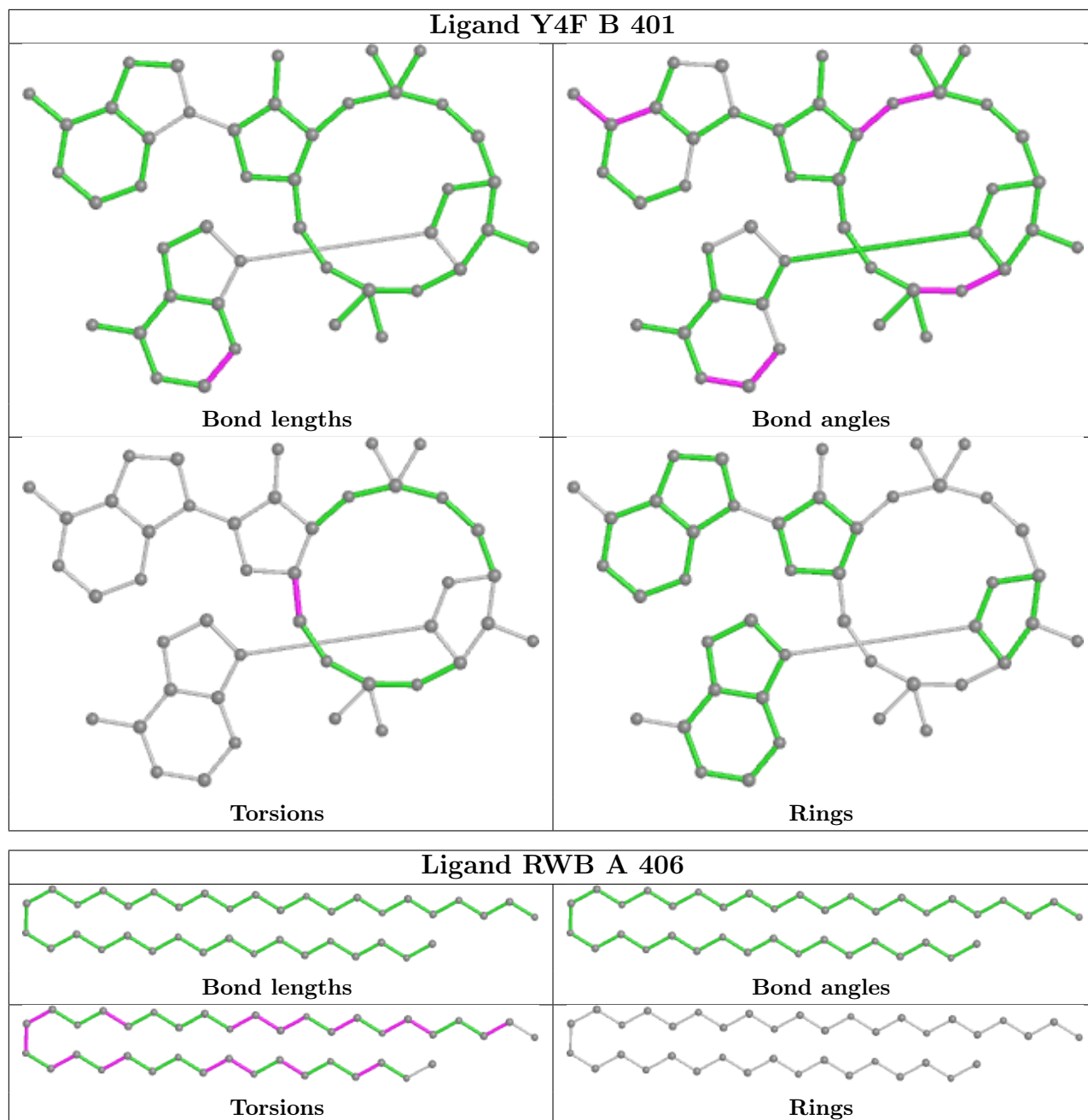
Mol	Chain	Res	Type	Atoms
3	A	404	GOL	O1-C1-C2-O2
3	A	404	GOL	O1-C1-C2-C3

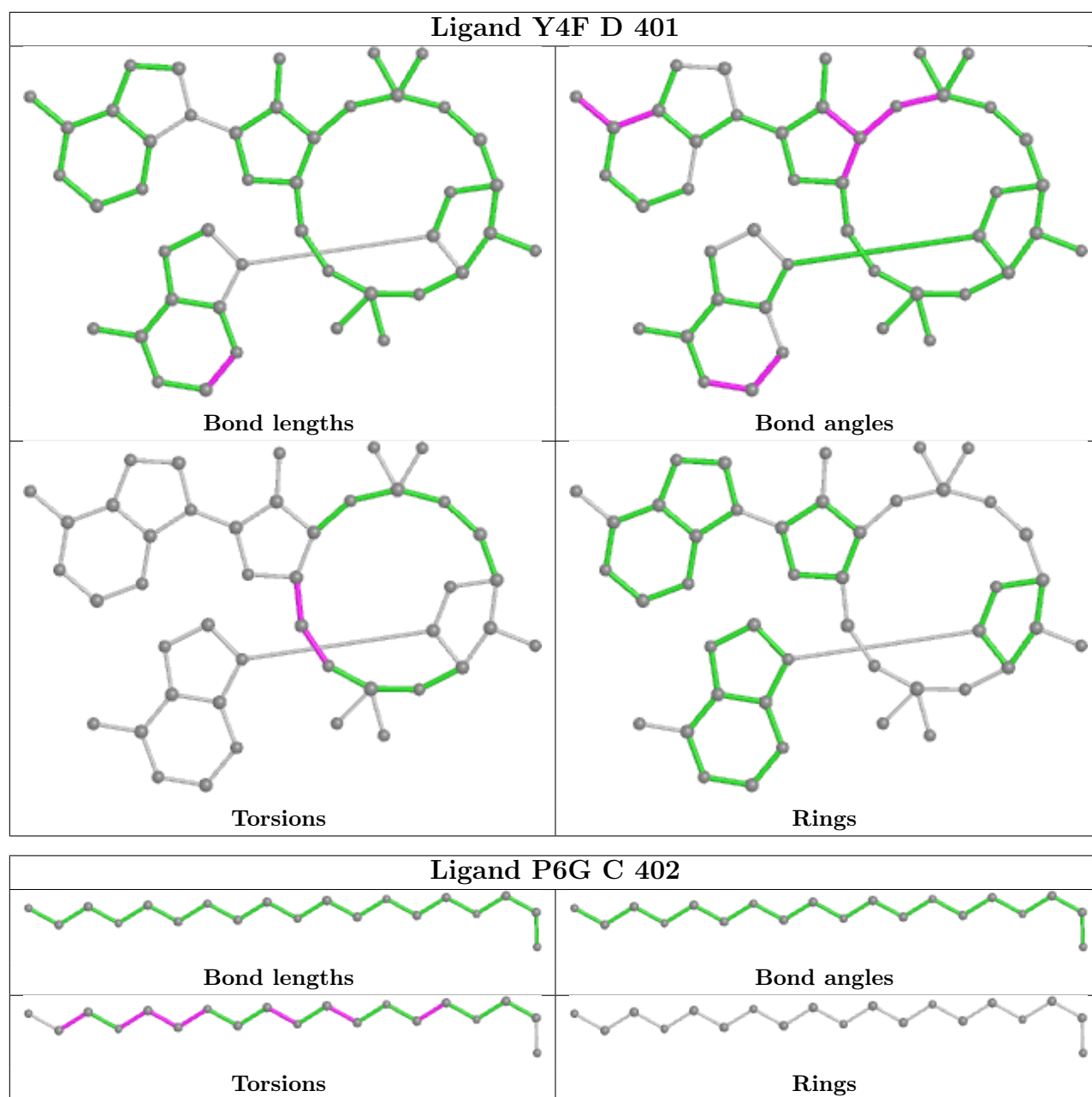
There are no ring outliers.

No monomer is involved in short contacts.

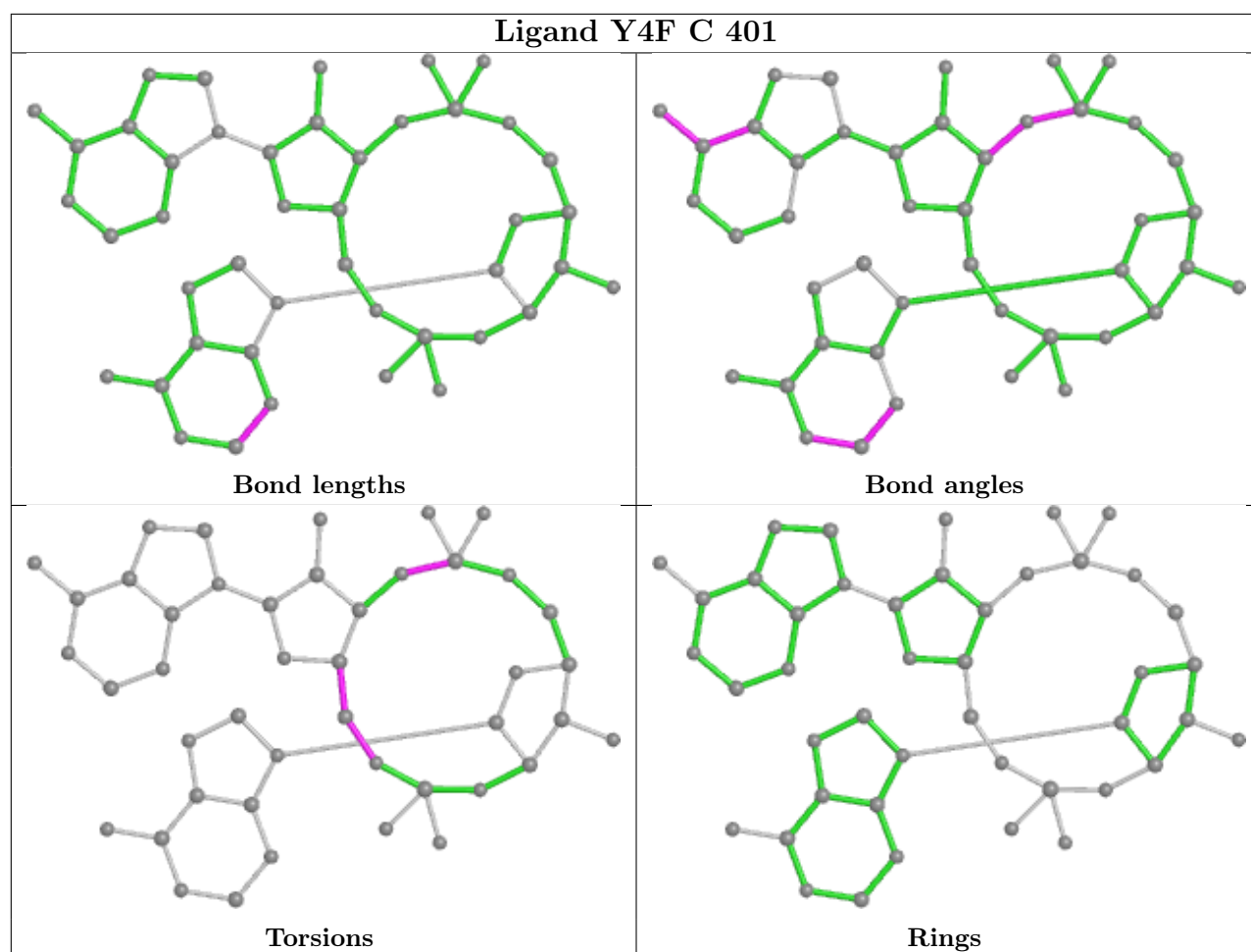
The following is a two-dimensional graphical depiction of Mogul quality analysis of bond lengths, bond angles, torsion angles, and ring geometry for all instances of the Ligand of Interest. In addition, ligands with molecular weight > 250 and outliers as shown on the validation Tables will also be included. For torsion angles, if less than 5% of the Mogul distribution of torsion angles is within 10 degrees of the torsion angle in question, then that torsion angle is considered an outlier. Any bond that is central to one or more torsion angles identified as an outlier by Mogul will be highlighted in the graph. For rings, the root-mean-square deviation (RMSD) between the ring in question and similar rings identified by Mogul is calculated over all ring torsion angles. If the average RMSD is greater than 60 degrees and the minimal RMSD between the ring in question and any Mogul-identified rings is also greater than 60 degrees, then that ring is considered an outlier. The outliers are highlighted in purple. The color gray indicates Mogul did not find sufficient equivalents in the CSD to analyse the geometry.











## 5.7 Other polymers [i](#)

There are no such residues in this entry.

## 5.8 Polymer linkage issues [i](#)

There are no chain breaks in this entry.

## 6 Fit of model and data [i](#)

### 6.1 Protein, DNA and RNA chains [i](#)

In the following table, the column labelled ‘#RSRZ> 2’ contains the number (and percentage) of RSRZ outliers, followed by percent RSRZ outliers for the chain as percentile scores relative to all X-ray entries and entries of similar resolution. The OWAB column contains the minimum, median, 95<sup>th</sup> percentile and maximum values of the occupancy-weighted average B-factor per residue. The column labelled ‘Q< 0.9’ lists the number of (and percentage) of residues with an average occupancy less than 0.9.

Mol	Chain	Analysed	<RSRZ>	#RSRZ>2	OWAB(Å <sup>2</sup> )	Q<0.9
1	A	369/388 (95%)	-0.14	3 (0%) 86 88	20, 33, 64, 84	0
1	B	352/388 (90%)	-0.02	5 (1%) 75 78	22, 42, 68, 91	0
1	C	368/388 (94%)	0.02	8 (2%) 62 66	21, 39, 75, 91	0
1	D	355/388 (91%)	-0.11	3 (0%) 86 88	21, 36, 64, 75	0
All	All	1444/1552 (93%)	-0.06	19 (1%) 77 80	20, 37, 68, 91	0

The worst 5 of 19 RSRZ outliers are listed below:

Mol	Chain	Res	Type	RSRZ
1	A	207	ASP	5.4
1	C	207	ASP	4.6
1	C	76	HIS	4.1
1	D	14	PHE	3.9
1	C	75	ALA	3.6

### 6.2 Non-standard residues in protein, DNA, RNA chains [i](#)

There are no non-standard protein/DNA/RNA residues in this entry.

### 6.3 Carbohydrates [i](#)

There are no monosaccharides in this entry.

### 6.4 Ligands [i](#)

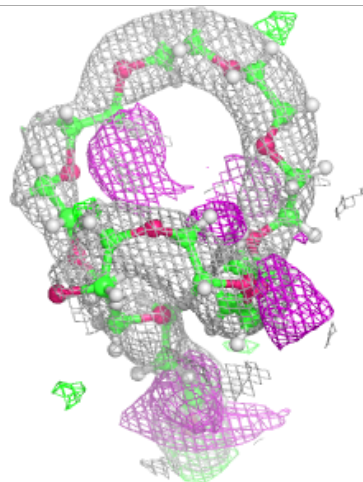
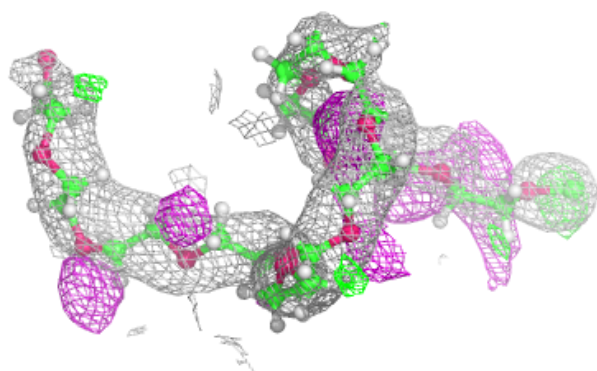
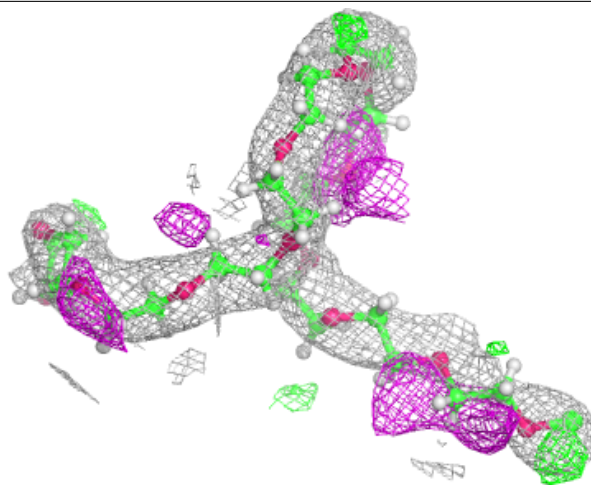
In the following table, the Atoms column lists the number of modelled atoms in the group and the number defined in the chemical component dictionary. The B-factors column lists the minimum, median, 95<sup>th</sup> percentile and maximum values of B factors of atoms in the group. The column labelled ‘Q< 0.9’ lists the number of atoms with occupancy less than 0.9.

Mol	Type	Chain	Res	Atoms	RSCC	RSR	B-factors( $\text{\AA}^2$ )	Q<0.9
6	MG	A	408	1/1	0.76	0.07	38,38,38,38	0
4	RWB	A	406	38/38	0.83	0.23	29,55,86,91	0
3	GOL	A	405	6/6	0.88	0.16	47,64,83,91	0
6	MG	D	404	1/1	0.88	0.06	62,62,62,62	0
2	Y4F	D	401	44/44	0.89	0.18	47,69,90,99	0
6	MG	B	404	1/1	0.90	0.09	63,63,63,63	0
7	P6G	C	402	19/19	0.91	0.14	39,50,59,72	0
3	GOL	D	402	6/6	0.93	0.13	35,42,47,51	0
3	GOL	A	404	6/6	0.93	0.12	34,48,59,59	0
3	GOL	A	402	6/6	0.94	0.13	50,60,74,87	0
6	MG	A	409	1/1	0.94	0.08	36,36,36,36	0
3	GOL	B	402	6/6	0.94	0.18	32,49,59,60	0
6	MG	C	404	1/1	0.94	0.05	28,28,28,28	0
6	MG	C	405	1/1	0.94	0.04	42,42,42,42	0
3	GOL	A	403	6/6	0.94	0.13	42,51,59,59	0
2	Y4F	B	401	44/44	0.94	0.14	48,66,83,94	0
6	MG	D	405	1/1	0.96	0.06	43,43,43,43	0
2	Y4F	A	401	44/44	0.98	0.13	20,25,33,40	0
2	Y4F	C	401	44/44	0.98	0.12	20,29,36,42	0
5	ZN	C	403	1/1	0.99	0.15	28,28,28,28	0
5	ZN	D	403	1/1	0.99	0.13	39,39,39,39	0
5	ZN	A	407	1/1	1.00	0.15	25,25,25,25	0
5	ZN	B	403	1/1	1.00	0.16	31,31,31,31	0

The following is a graphical depiction of the model fit to experimental electron density of all instances of the Ligand of Interest. In addition, ligands with molecular weight > 250 and outliers as shown on the geometry validation Tables will also be included. Each fit is shown from different orientation to approximate a three-dimensional view.

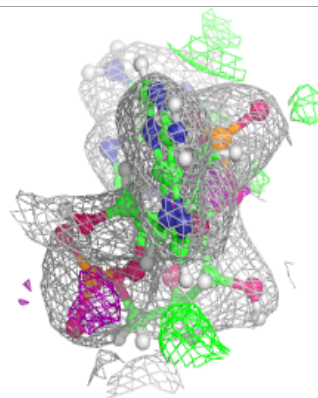
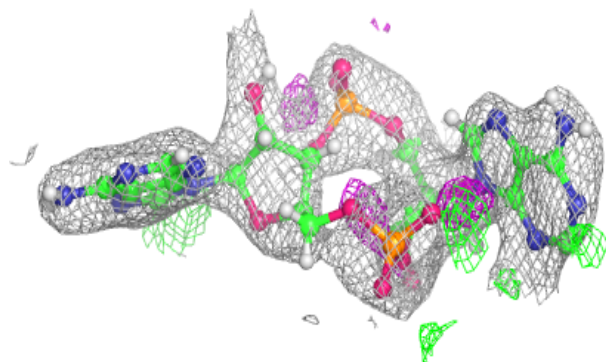
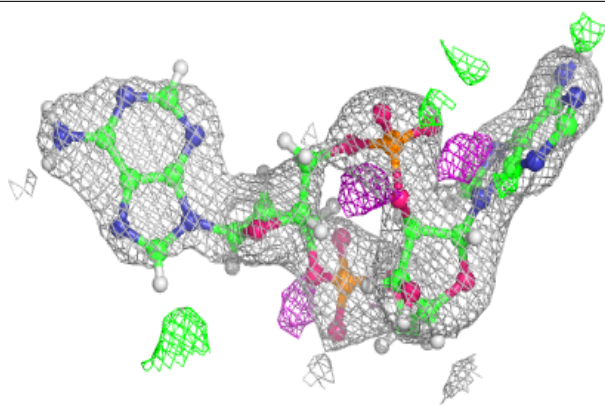
**Electron density around RWB A 406:**

$2mF_o-DF_c$  (at 0.7 rmsd) in gray  
 $mF_o-DF_c$  (at 3 rmsd) in purple (negative)  
and green (positive)

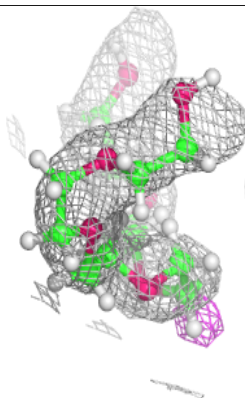
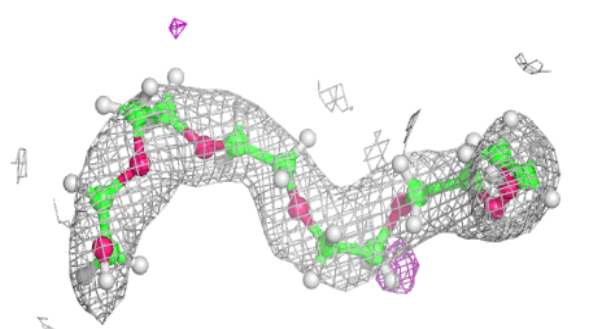
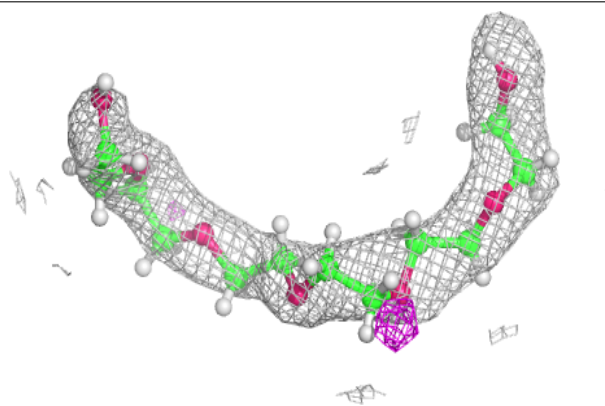


**Electron density around Y4F D 401:**

$2mF_o-DF_c$  (at 0.7 rmsd) in gray  
 $mF_o-DF_c$  (at 3 rmsd) in purple (negative)  
and green (positive)

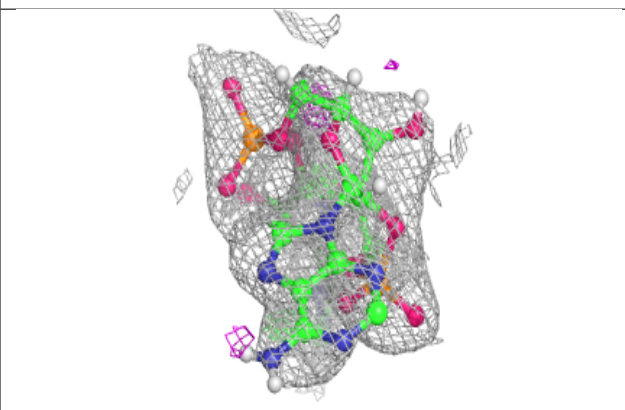
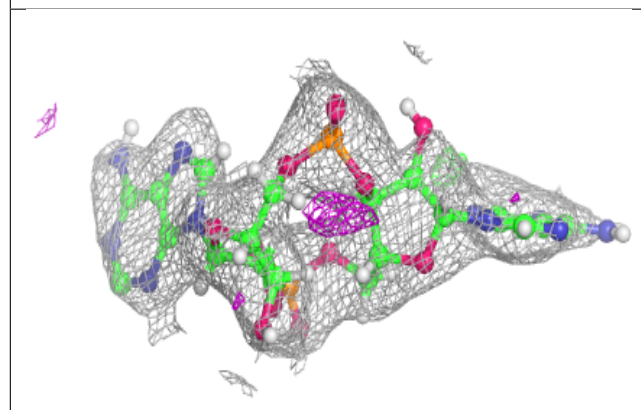
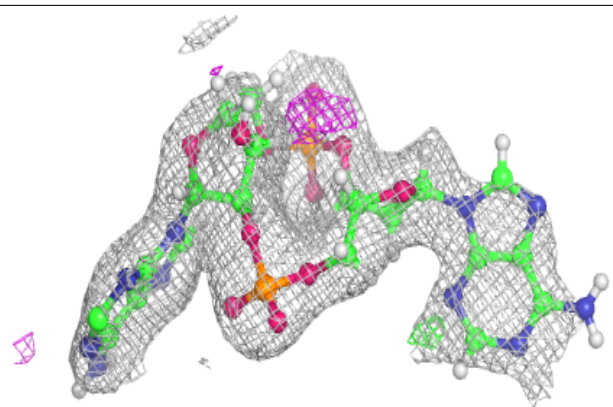
**Electron density around P6G C 402:**

$2mF_o-DF_c$  (at 0.7 rmsd) in gray  
 $mF_o-DF_c$  (at 3 rmsd) in purple (negative)  
and green (positive)

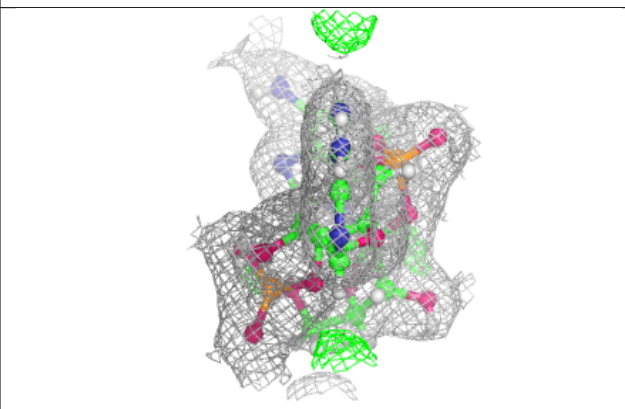
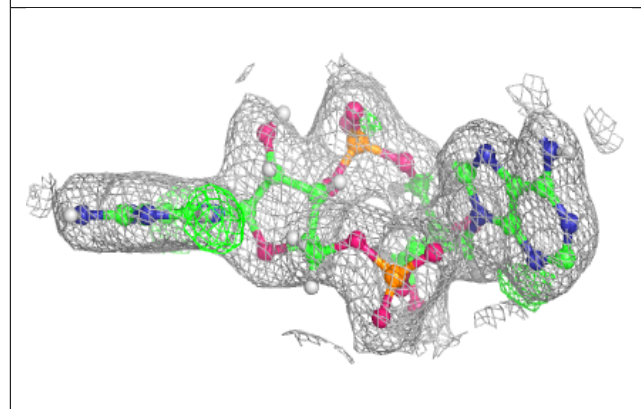
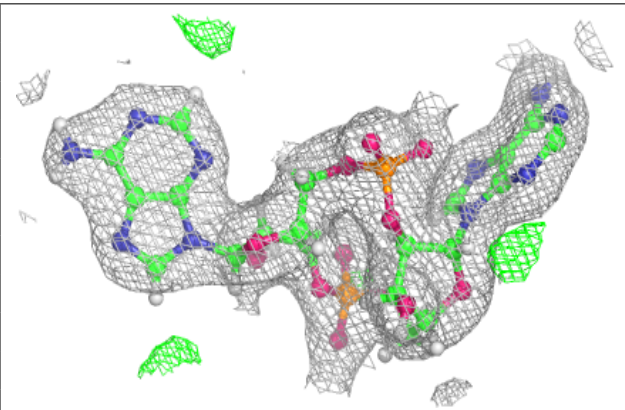


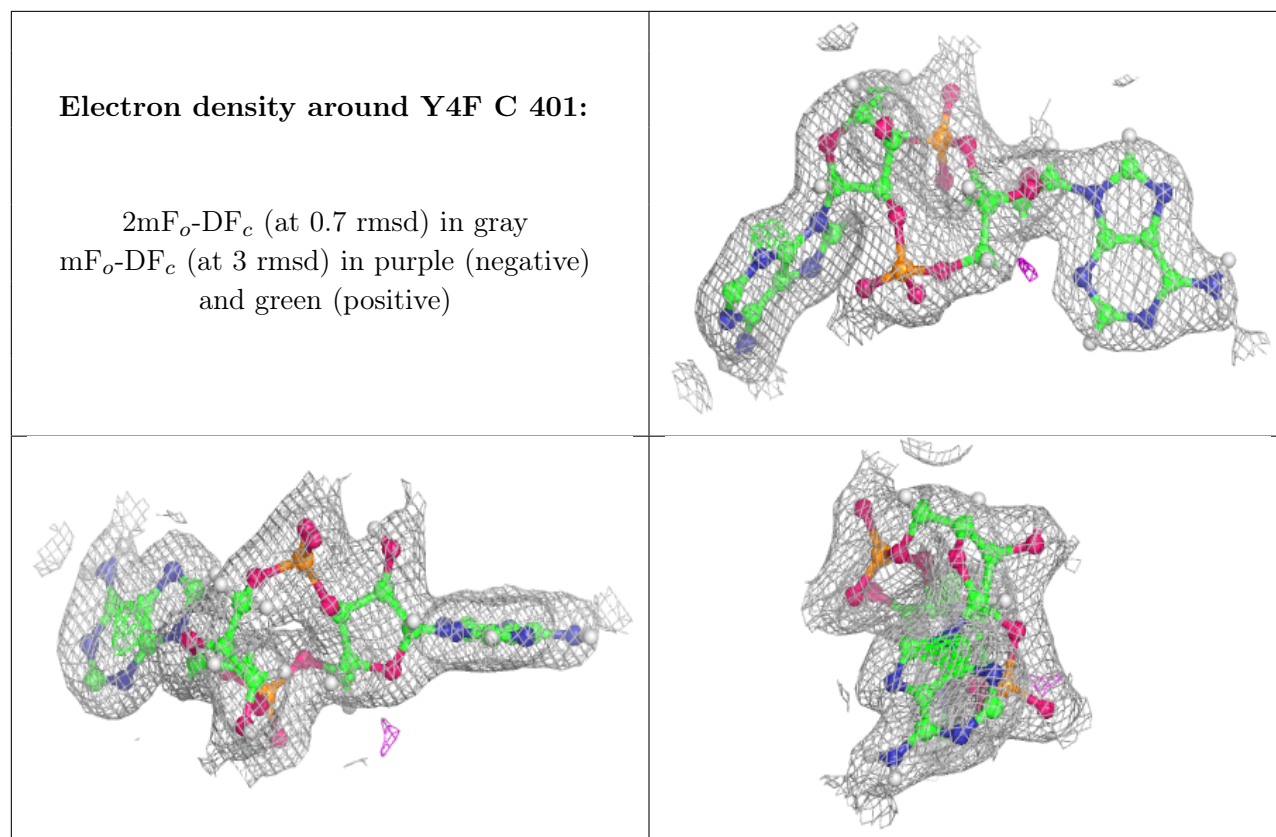
**Electron density around Y4F B 401:**

$2mF_o-DF_c$  (at 0.7 rmsd) in gray  
 $mF_o-DF_c$  (at 3 rmsd) in purple (negative)  
and green (positive)

**Electron density around Y4F A 401:**

$2mF_o-DF_c$  (at 0.7 rmsd) in gray  
 $mF_o-DF_c$  (at 3 rmsd) in purple (negative)  
and green (positive)





## 6.5 Other polymers [i](#)

There are no such residues in this entry.