



# Full wwPDB X-ray Structure Validation Report ⓘ

Jan 6, 2024 – 07:29 pm GMT

PDB ID : 6F9V  
Title : Crystal structure of human Angiotensin-1 converting enzyme N-domain in complex with Sampatrilat.  
Authors : Cozier, G.E.; Acharya, K.R.  
Deposited on : 2017-12-15  
Resolution : 1.69 Å(reported)

This is a Full wwPDB X-ray Structure Validation Report for a publicly released PDB entry.

We welcome your comments at [validation@mail.wwpdb.org](mailto:validation@mail.wwpdb.org)

A user guide is available at

<https://www.wwpdb.org/validation/2017/XrayValidationReportHelp>

with specific help available everywhere you see the ⓘ symbol.

The types of validation reports are described at

<http://www.wwpdb.org/validation/2017/FAQs#types>.

---

The following versions of software and data (see [references ⓘ](#)) were used in the production of this report:

MolProbity : 4.02b-467  
Mogul : 1.8.4, CSD as541be (2020)  
Xtriage (Phenix) : 1.13  
EDS : 2.36  
buster-report : 1.1.7 (2018)  
Percentile statistics : 20191225.v01 (using entries in the PDB archive December 25th 2019)  
Refmac : 5.8.0158  
CCP4 : 7.0.044 (Gargrove)  
Ideal geometry (proteins) : Engh & Huber (2001)  
Ideal geometry (DNA, RNA) : Parkinson et al. (1996)  
Validation Pipeline (wwPDB-VP) : 2.36

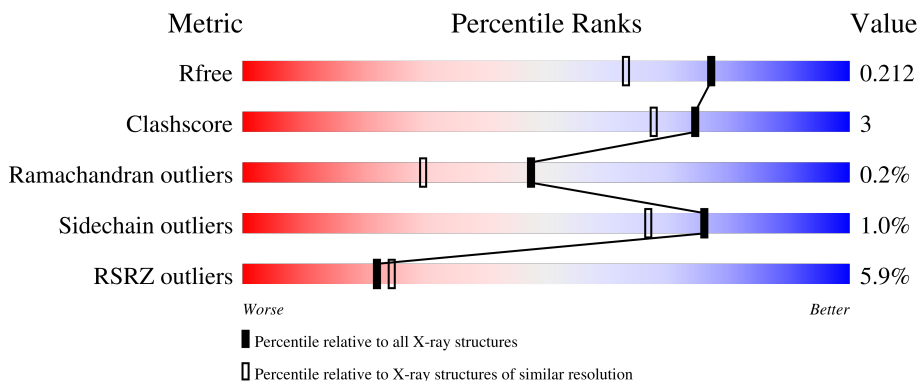
# 1 Overall quality at a glance

The following experimental techniques were used to determine the structure:

*X-RAY DIFFRACTION*

The reported resolution of this entry is 1.69 Å.

Percentile scores (ranging between 0-100) for global validation metrics of the entry are shown in the following graphic. The table shows the number of entries on which the scores are based.



Metric	Whole archive (#Entries)	Similar resolution (#Entries, resolution range(Å))
$R_{free}$	130704	4298 (1.70-1.70)
Clashscore	141614	4695 (1.70-1.70)
Ramachandran outliers	138981	4610 (1.70-1.70)
Sidechain outliers	138945	4610 (1.70-1.70)
RSRZ outliers	127900	4222 (1.70-1.70)

The table below summarises the geometric issues observed across the polymeric chains and their fit to the electron density. The red, orange, yellow and green segments of the lower bar indicate the fraction of residues that contain outliers for  $\geq 3$ , 2, 1 and 0 types of geometric quality criteria respectively. A grey segment represents the fraction of residues that are not modelled. The numeric value for each fraction is indicated below the corresponding segment, with a dot representing fractions  $\leq 5\%$ . The upper red bar (where present) indicates the fraction of residues that have poor fit to the electron density. The numeric value is given above the bar.

Mol	Chain	Length	Quality of chain
1	A	629	 4% 87% 9%
1	B	629	 7% 89% 7%
2	C	5	 40% 60%
3	D	3	 33% 33% 33%

## 2 Entry composition i

There are 14 unique types of molecules in this entry. The entry contains 22601 atoms, of which 10587 are hydrogens and 0 are deuteriums.

In the tables below, the ZeroOcc column contains the number of atoms modelled with zero occupancy, the AltConf column contains the number of residues with at least one atom in alternate conformation and the Trace column contains the number of residues modelled with at most 2 atoms.

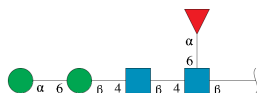
- Molecule 1 is a protein called Angiotensin-converting enzyme.

Mol	Chain	Residues	Atoms						ZeroOcc	AltConf	Trace
			Total	C	H	N	O	S			
1	A	605	Total	C	H	N	O	S	0	97	0
			11127	3644	5432	981	1051	19			
1	B	604	Total	C	H	N	O	S	0	14	0
			9813	3216	4796	863	919	19			

There are 16 discrepancies between the modelled and reference sequences:

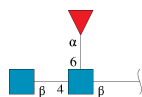
Chain	Residue	Modelled	Actual	Comment	Reference
A	9	GLN	ASN	conflict	UNP P12821
A	25	GLN	ASN	conflict	UNP P12821
A	82	GLN	ASN	conflict	UNP P12821
A	117	GLN	ASN	conflict	UNP P12821
A	289	GLN	ASN	conflict	UNP P12821
A	545	ARG	GLN	conflict	UNP P12821
A	576	LEU	PRO	conflict	UNP P12821
A	629	LEU	-	expression tag	UNP P12821
B	9	GLN	ASN	conflict	UNP P12821
B	25	GLN	ASN	conflict	UNP P12821
B	82	GLN	ASN	conflict	UNP P12821
B	117	GLN	ASN	conflict	UNP P12821
B	289	GLN	ASN	conflict	UNP P12821
B	545	ARG	GLN	conflict	UNP P12821
B	576	LEU	PRO	conflict	UNP P12821
B	629	LEU	-	expression tag	UNP P12821

- Molecule 2 is an oligosaccharide called alpha-D-mannopyranose-(1-6)-beta-D-mannopyranose-(1-4)-2-acetamido-2-deoxy-beta-D-glucopyranose-(1-4)-[alpha-L-fucopyranose-(1-6)]2-acetamido-2-deoxy-beta-D-glucopyranose.



Mol	Chain	Residues	Atoms					ZeroOcc	AltConf	Trace
			Total	C	H	N	O			
2	C	5	115	34	55	2	24	0	0	0

- Molecule 3 is an oligosaccharide called 2-acetamido-2-deoxy-beta-D-glucopyranose-(1-4)-[alpha-L-fucopyranose-(1-6)]2-acetamido-2-deoxy-beta-D-glucopyranose.

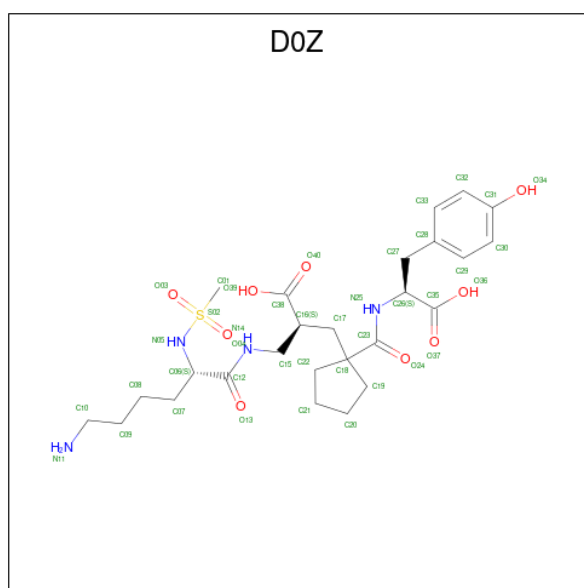


Mol	Chain	Residues	Atoms					ZeroOcc	AltConf	Trace
			Total	C	H	N	O			
3	D	3	73	22	35	2	14	0	0	0

- Molecule 4 is ZINC ION (three-letter code: ZN) (formula: Zn).

Mol	Chain	Residues	Atoms		ZeroOcc	AltConf
4	A	1	Total	Zn	0	0
			1	1		
4	B	1	Total	Zn	0	0
			1	1		

- Molecule 5 is Sampatrilat (three-letter code: D0Z) (formula: C<sub>26</sub>H<sub>40</sub>N<sub>4</sub>O<sub>9</sub>S).



Mol	Chain	Residues	Atoms						ZeroOcc	AltConf
			Total	C	H	N	O	S		
5	A	1	78	26	38	4	9	1	0	0

*Continued on next page...*

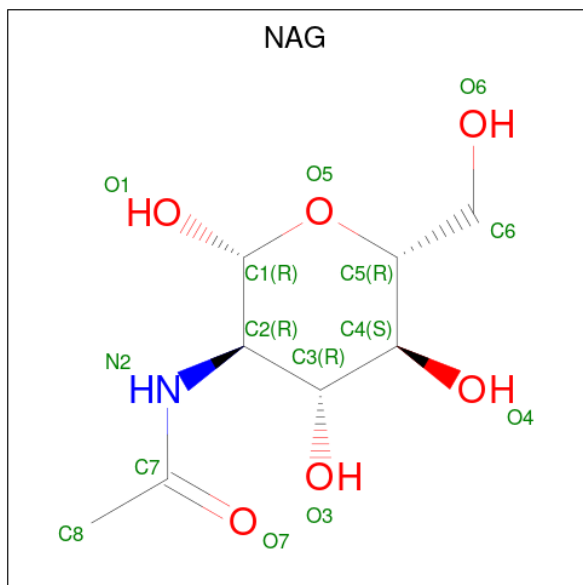
Continued from previous page...

Mol	Chain	Residues	Atoms					ZeroOcc	AltConf	
			Total	C	H	N	O			S
5	B	1	78	26	38	4	9	1	0	0

- Molecule 6 is CHLORIDE ION (three-letter code: CL) (formula: Cl).

Mol	Chain	Residues	Atoms	ZeroOcc	AltConf
6	A	2	Total Cl 2 2	0	0
6	B	2	Total Cl 2 2	0	0

- Molecule 7 is 2-acetamido-2-deoxy-beta-D-glucopyranose (three-letter code: NAG) (formula: C<sub>8</sub>H<sub>15</sub>NO<sub>6</sub>).

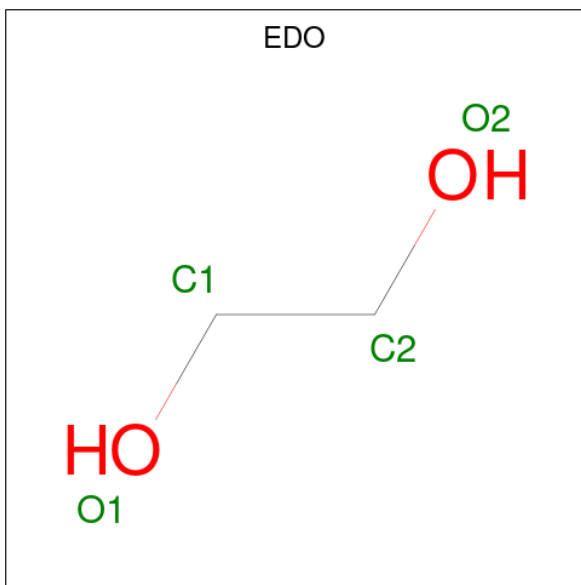


Mol	Chain	Residues	Atoms					ZeroOcc	AltConf
			Total	C	H	N	O		
7	A	1	28	8	14	1	5	0	0
7	B	1	28	8	14	1	5	0	0
7	B	1	28	8	14	1	5	0	0
7	B	1	28	8	14	1	5	0	0

- Molecule 8 is MAGNESIUM ION (three-letter code: MG) (formula: Mg).

Mol	Chain	Residues	Atoms	ZeroOcc	AltConf
8	A	2	Total Mg 2 2	0	0
8	B	1	Total Mg 1 1	0	0

- Molecule 9 is 1,2-ETHANEDIOL (three-letter code: EDO) (formula: C<sub>2</sub>H<sub>6</sub>O<sub>2</sub>).



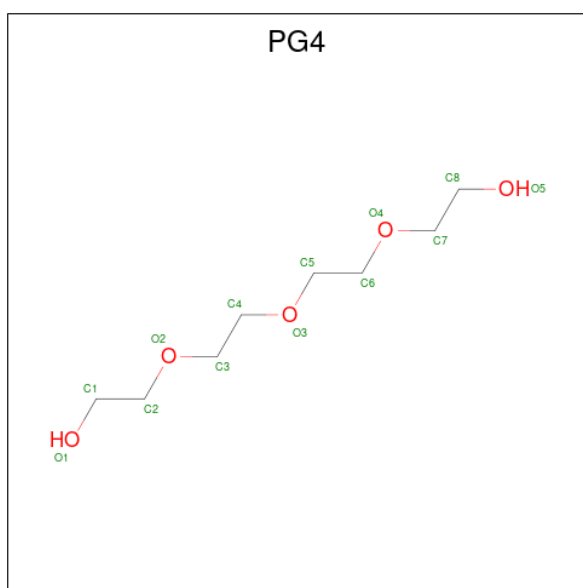
Mol	Chain	Residues	Atoms	ZeroOcc	AltConf
9	A	1	Total C H O 9 2 5 2	0	1
9	A	1	Total C H O 10 2 6 2	0	0
9	A	1	Total C H O 10 2 6 2	0	0
9	B	1	Total C H O 10 2 6 2	0	0
9	B	1	Total C H O 10 2 6 2	0	0
9	B	1	Total C H O 10 2 6 2	0	0
9	B	1	Total C H O 10 2 6 2	0	0

- Molecule 10 is DI(HYDROXYETHYL)ETHER (three-letter code: PEG) (formula: C<sub>4</sub>H<sub>10</sub>O<sub>3</sub>).



Mol	Chain	Residues	Atoms				ZeroOcc	AltConf
			Total	C	H	O		
10	A	1	17	4	10	3	0	0
10	B	1	17	4	10	3	0	0

- Molecule 11 is TETRAETHYLENE GLYCOL (three-letter code: PG4) (formula:  $C_8H_{18}O_5$ ).



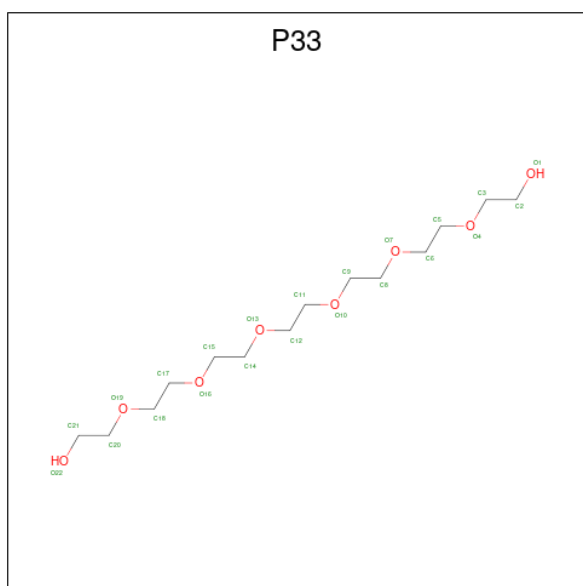
Mol	Chain	Residues	Atoms				ZeroOcc	AltConf
			Total	C	H	O		
11	A	1	31	8	18	5	0	0

- Molecule 12 is TRIETHYLENE GLYCOL (three-letter code: PGE) (formula:  $C_6H_{14}O_4$ ).



Mol	Chain	Residues	Atoms				ZeroOcc	AltConf
12	B	1	Total	C	H	O	0	0
			24	6	14	4		
12	B	1	Total	C	H	O	0	0
			24	6	14	4		

- Molecule 13 is 3,6,9,12,15,18-HEXAOXAIICOSANE-1,20-DIOL (three-letter code: P33) (formula:  $C_{14}H_{30}O_8$ ).



Mol	Chain	Residues	Atoms				ZeroOcc	AltConf
13	B	1	Total	C	H	O	0	0
			52	14	30	8		



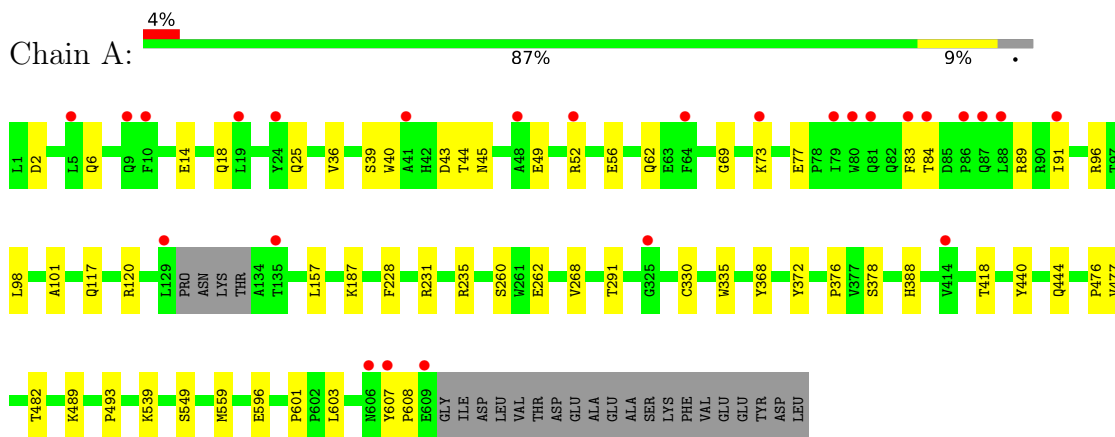
- Molecule 14 is water.

<b>Mol</b>	<b>Chain</b>	<b>Residues</b>	<b>Atoms</b>		<b>ZeroOcc</b>	<b>AltConf</b>
14	A	541	Total 549	O 549	0	17
14	B	409	Total 413	O 413	0	5

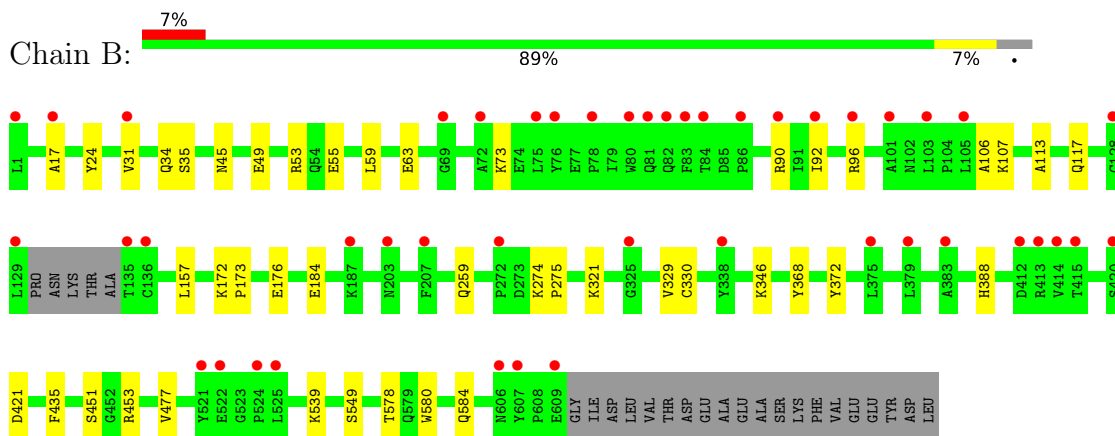
### 3 Residue-property plots [i](#)

These plots are drawn for all protein, RNA, DNA and oligosaccharide chains in the entry. The first graphic for a chain summarises the proportions of the various outlier classes displayed in the second graphic. The second graphic shows the sequence view annotated by issues in geometry and electron density. Residues are color-coded according to the number of geometric quality criteria for which they contain at least one outlier: green = 0, yellow = 1, orange = 2 and red = 3 or more. A red dot above a residue indicates a poor fit to the electron density ( $RSRZ > 2$ ). Stretches of 2 or more consecutive residues without any outlier are shown as a green connector. Residues present in the sample, but not in the model, are shown in grey.

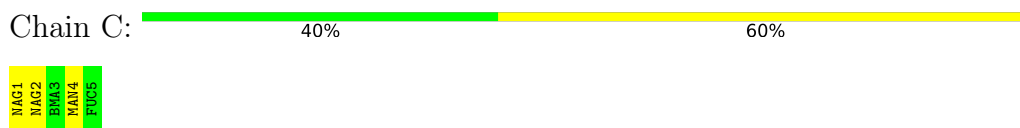
- Molecule 1: Angiotensin-converting enzyme



- Molecule 1: Angiotensin-converting enzyme



- Molecule 2: alpha-D-mannopyranose-(1-6)-beta-D-mannopyranose-(1-4)-2-acetamido-2-deoxy-beta-D-glucopyranose-(1-4)-[alpha-L-fucopyranose-(1-6)]2-acetamido-2-deoxy-beta-D-glucopyranose



- Molecule 3: 2-acetamido-2-deoxy-beta-D-glucopyranose-(1-4)-[alpha-L-fucopyranose-(1-6)]2-acetamido-2-deoxy-beta-D-glucopyranose

Chain D:  33% 33% 33%

 MAG1  
MAG2  
FUC3

## 4 Data and refinement statistics

Property	Value	Source
Space group	P 1	Depositor
Cell constants a, b, c, $\alpha$ , $\beta$ , $\gamma$	73.22Å 77.22Å 83.11Å 88.36° 64.20° 75.29°	Depositor
Resolution (Å)	21.97 – 1.69 74.35 – 1.69	Depositor EDS
% Data completeness (in resolution range)	97.1 (21.97-1.69) 97.1 (74.35-1.69)	Depositor EDS
$R_{merge}$	(Not available)	Depositor
$R_{sym}$	(Not available)	Depositor
$\langle I/\sigma(I) \rangle$ <sup>1</sup>	3.66 (at 1.69Å)	Xtrriage
Refinement program	PHENIX (1.12_2829: ???)	Depositor
R, $R_{free}$	0.183 , 0.212 0.183 , 0.212	Depositor DCC
$R_{free}$ test set	2506 reflections (1.46%)	wwPDB-VP
Wilson B-factor (Å <sup>2</sup> )	25.9	Xtrriage
Anisotropy	0.263	Xtrriage
Bulk solvent $k_{sol}$ (e/Å <sup>3</sup> ), $B_{sol}$ (Å <sup>2</sup> )	0.42 , 53.0	EDS
L-test for twinning <sup>2</sup>	$\langle  L  \rangle = 0.51$ , $\langle L^2 \rangle = 0.34$	Xtrriage
Estimated twinning fraction	No twinning to report.	Xtrriage
$F_o, F_c$ correlation	0.97	EDS
Total number of atoms	22601	wwPDB-VP
Average B, all atoms (Å <sup>2</sup> )	39.0	wwPDB-VP

Xtrriage's analysis on translational NCS is as follows: *The largest off-origin peak in the Patterson function is 5.26% of the height of the origin peak. No significant pseudotranslation is detected.*

<sup>1</sup>Intensities estimated from amplitudes.

<sup>2</sup>Theoretical values of  $\langle |L| \rangle$ ,  $\langle L^2 \rangle$  for acentric reflections are 0.5, 0.333 respectively for untwinned datasets, and 0.375, 0.2 for perfectly twinned datasets.

## 5 Model quality [i](#)

### 5.1 Standard geometry [i](#)

Bond lengths and bond angles in the following residue types are not validated in this section: MG, FUC, PEG, BMA, ZN, PGE, MAN, EDO, P33, NAG, PG4, CL, D0Z

The Z score for a bond length (or angle) is the number of standard deviations the observed value is removed from the expected value. A bond length (or angle) with  $|Z| > 5$  is considered an outlier worth inspection. RMSZ is the root-mean-square of all Z scores of the bond lengths (or angles).

Mol	Chain	Bond lengths		Bond angles	
		RMSZ	# Z  >5	RMSZ	# Z  >5
1	A	0.57	0/5873	0.67	0/7993
1	B	0.51	0/5200	0.61	0/7080
All	All	0.54	0/11073	0.64	0/15073

There are no bond length outliers.

There are no bond angle outliers.

There are no chirality outliers.

There are no planarity outliers.

### 5.2 Too-close contacts [i](#)

In the following table, the Non-H and H(model) columns list the number of non-hydrogen atoms and hydrogen atoms in the chain respectively. The H(added) column lists the number of hydrogen atoms added and optimized by MolProbity. The Clashes column lists the number of clashes within the asymmetric unit, whereas Symm-Clashes lists symmetry-related clashes.

Mol	Chain	Non-H	H(model)	H(added)	Clashes	Symm-Clashes
1	A	5695	5432	5412	42	0
1	B	5017	4796	4759	23	0
2	C	60	55	52	0	0
3	D	38	35	34	2	0
4	A	1	0	0	0	0
4	B	1	0	0	0	0
5	A	40	38	0	1	0
5	B	40	38	0	1	0
6	A	2	0	0	0	0
6	B	2	0	0	0	0
7	A	14	14	13	0	0

*Continued on next page...*

Continued from previous page...

Mol	Chain	Non-H	H(model)	H(added)	Clashes	Symm-Clashes
7	B	42	42	39	1	0
8	A	2	0	0	0	0
8	B	1	0	0	0	0
9	A	12	17	18	3	0
9	B	16	24	24	1	0
10	A	7	10	10	0	0
10	B	7	10	10	0	0
11	A	13	18	18	5	0
12	B	20	28	28	0	0
13	B	22	30	30	0	0
14	A	549	0	0	10	0
14	B	413	0	0	6	0
All	All	12014	10587	10447	69	0

The all-atom clashscore is defined as the number of clashes found per 1000 atoms (including hydrogen atoms). The all-atom clashscore for this structure is 3.

All (69) close contacts within the same asymmetric unit are listed below, sorted by their clash magnitude.

Atom-1	Atom-2	Interatomic distance (Å)	Clash overlap (Å)
1:B:321:LYS:O	14:B:801:HOH:O	1.98	0.80
1:A:77[B]:GLU:OE1	1:A:96[B]:ARG:NE	2.21	0.74
1:A:40[B]:TRP:CE2	1:A:44:THR:HG21	2.25	0.72
1:A:84[B]:THR:OG1	14:A:1032[B]:HOH:O	2.10	0.69
1:B:106:ALA:O	14:B:803:HOH:O	2.13	0.67
1:A:549:SER:OG	14:A:801:HOH:O	2.14	0.65
1:B:55:GLU:OE2	14:B:804:HOH:O	2.14	0.65
1:A:39[B]:SER:O	1:A:43[B]:ASP:N	2.29	0.60
1:A:98[B]:LEU:HB3	1:A:101:ALA:HB3	1.86	0.58
1:A:83[B]:PHE:O	1:A:89[B]:ARG:NH1	2.37	0.57
1:A:157:LEU:HD11	1:A:477:VAL:HG13	1.85	0.56
1:A:73[B]:LYS:NZ	14:A:805:HOH:O	2.29	0.56
1:B:329:VAL:O	1:B:346:LYS:HE2	2.05	0.55
1:A:601:PRO:O	14:A:802:HOH:O	2.18	0.55
1:A:62[B]:GLN:HG3	14:A:1144:HOH:O	2.06	0.54
1:A:91[B]:ILE:HG12	1:A:378:SER:HB2	1.91	0.53
1:B:578:THR:HG23	9:B:710:EDO:H11	1.90	0.53
1:A:418:THR:HG23	9:A:716[A]:EDO:C2	2.39	0.53
1:B:90:ARG:NH1	1:B:549:SER:O	2.37	0.53
1:A:539:LYS:HE3	1:A:559:MET:O	2.09	0.52
1:A:14[B]:GLU:HB3	14:A:931[B]:HOH:O	2.10	0.52

Continued on next page...

*Continued from previous page...*

Atom-1	Atom-2	Interatomic distance (Å)	Clash overlap (Å)
1:B:580:TRP:O	1:B:584:GLN:HG2	2.10	0.51
1:B:73:LYS:HG3	1:B:96:ARG:HG3	1.92	0.51
1:A:40[B]:TRP:O	1:A:44:THR:N	2.28	0.50
1:B:31:VAL:O	1:B:34:GLN:HG3	2.12	0.50
1:B:49:GLU:HG3	1:B:53:ARG:CZ	2.42	0.49
1:A:73[A]:LYS:HG3	1:A:77[A]:GLU:HB2	1.94	0.49
1:A:2:ASP:O	1:A:6[B]:GLN:HG3	2.12	0.48
1:A:52:ARG:NH1	1:A:56:GLU:OE2	2.47	0.47
1:A:117:GLN:HG2	1:A:120[B]:ARG:HH22	1.79	0.47
1:B:24:TYR:OH	14:B:805:HOH:O	2.18	0.47
1:A:444[B]:GLN:NE2	14:A:816:HOH:O	2.39	0.47
1:B:59:LEU:O	1:B:63:GLU:HG3	2.15	0.47
5:B:702:D0Z:C38	5:B:702:D0Z:C22	2.94	0.46
1:B:539:LYS:HG3	14:B:1139:HOH:O	2.16	0.46
1:A:268:VAL:O	11:A:720:PG4:H42	2.14	0.46
1:B:172:LYS:O	1:B:176[A]:GLU:HG3	2.16	0.46
1:B:451:SER:OG	1:B:453:ARG:HG2	2.15	0.46
1:B:274:LYS:HB3	1:B:275:PRO:CD	2.46	0.46
1:A:235:ARG:HH22	11:A:720:PG4:H32	1.81	0.45
1:A:418:THR:HG23	9:A:716[A]:EDO:H21	1.98	0.45
1:B:157:LEU:HD11	1:B:477:VAL:HG13	1.99	0.45
1:A:596:GLU:OE2	7:B:707:NAG:O7	2.34	0.44
1:A:330:CYS:O	14:A:803:HOH:O	2.21	0.44
1:A:489:LYS:O	1:A:493:PRO:HD2	2.18	0.44
1:B:107:LYS:NZ	1:B:184[A]:GLU:OE1	2.47	0.44
5:A:702:D0Z:C22	5:A:702:D0Z:C38	2.95	0.44
1:B:172:LYS:HB3	1:B:173:PRO:HD3	1.99	0.43
1:A:49:GLU:OE1	1:A:52:ARG:NH2	2.44	0.43
1:A:69[B]:GLY:HA3	1:A:98[B]:LEU:HD11	2.00	0.43
1:B:17:ALA:HB1	1:B:92:ILE:HD11	2.01	0.43
1:A:482:THR:HG21	3:D:1:NAG:O7	2.19	0.43
14:A:1086:HOH:O	3:D:3:FUC:H62	2.18	0.43
1:A:260[B]:SER:HB3	1:A:262[B]:GLU:OE1	2.18	0.42
1:A:418:THR:HG23	9:A:716[A]:EDO:H22	2.02	0.42
1:A:607:TYR:CG	1:A:608:PRO:HA	2.53	0.42
1:A:187:LYS:NZ	14:A:836:HOH:O	2.51	0.42
1:A:157:LEU:HD13	1:A:476:PRO:HB2	2.02	0.41
1:A:440:TYR:O	1:A:444[B]:GLN:HG2	2.21	0.41
1:B:184[B]:GLU:OE2	14:B:806:HOH:O	2.21	0.41
1:A:477:VAL:HG12	1:A:603:LEU:HD21	2.02	0.41
1:B:113:ALA:O	1:B:117:GLN:HG3	2.20	0.41

*Continued on next page...*

Continued from previous page...

Atom-1	Atom-2	Interatomic distance (Å)	Clash overlap (Å)
1:A:18[B]:GLN:HA	1:A:18[B]:GLN:OE1	2.19	0.41
1:A:231:ARG:HG3	11:A:720:PG4:H71	2.03	0.41
11:A:720:PG4:H51	11:A:720:PG4:H72	1.83	0.41
1:A:25[A]:GLN:OE1	1:A:376:PRO:CB	2.69	0.40
1:B:259:GLN:O	1:B:435:PHE:HA	2.21	0.40
1:A:36[B]:VAL:HG13	1:A:335:TRP:HE3	1.85	0.40
1:A:228:PHE:CZ	11:A:720:PG4:H52	2.56	0.40

There are no symmetry-related clashes.

## 5.3 Torsion angles [i](#)

### 5.3.1 Protein backbone [i](#)

In the following table, the Percentiles column shows the percent Ramachandran outliers of the chain as a percentile score with respect to all X-ray entries followed by that with respect to entries of similar resolution.

The Analysed column shows the number of residues for which the backbone conformation was analysed, and the total number of residues.

Mol	Chain	Analysed	Favoured	Allowed	Outliers	Percentiles
1	A	698/629 (111%)	685 (98%)	12 (2%)	1 (0%)	51 33
1	B	614/629 (98%)	600 (98%)	13 (2%)	1 (0%)	47 30
All	All	1312/1258 (104%)	1285 (98%)	25 (2%)	2 (0%)	47 30

All (2) Ramachandran outliers are listed below:

Mol	Chain	Res	Type
1	A	45	ASN
1	B	45	ASN

### 5.3.2 Protein sidechains [i](#)

In the following table, the Percentiles column shows the percent sidechain outliers of the chain as a percentile score with respect to all X-ray entries followed by that with respect to entries of similar resolution.

The Analysed column shows the number of residues for which the sidechain conformation was analysed, and the total number of residues.



Mol	Chain	Analysed	Rotameric	Outliers	Percentiles	
1	A	597/541 (110%)	593 (99%)	4 (1%)	84	77
1	B	533/541 (98%)	527 (99%)	6 (1%)	73	63
All	All	1130/1082 (104%)	1120 (99%)	10 (1%)	76	70

All (10) residues with a non-rotameric sidechain are listed below:

Mol	Chain	Res	Type
1	A	291	THR
1	A	368	TYR
1	A	372	TYR
1	A	388	HIS
1	B	35	SER
1	B	330	CYS
1	B	368	TYR
1	B	372	TYR
1	B	388	HIS
1	B	421	ASP

Sometimes sidechains can be flipped to improve hydrogen bonding and reduce clashes. There are no such sidechains identified.

### 5.3.3 RNA [i](#)

There are no RNA molecules in this entry.

## 5.4 Non-standard residues in protein, DNA, RNA chains [i](#)

There are no non-standard protein/DNA/RNA residues in this entry.

## 5.5 Carbohydrates [i](#)

8 monosaccharides are modelled in this entry.

In the following table, the Counts columns list the number of bonds (or angles) for which Mogul statistics could be retrieved, the number of bonds (or angles) that are observed in the model and the number of bonds (or angles) that are defined in the Chemical Component Dictionary. The Link column lists molecule types, if any, to which the group is linked. The Z score for a bond length (or angle) is the number of standard deviations the observed value is removed from the expected value. A bond length (or angle) with  $|Z| > 2$  is considered an outlier worth inspection. RMSZ is the root-mean-square of all Z scores of the bond lengths (or angles).

Mol	Type	Chain	Res	Link	Bond lengths			Bond angles		
					Counts	RMSZ	# Z  > 2	Counts	RMSZ	# Z  > 2
2	NAG	C	1	1,2	14,14,15	0.73	1 (7%)	17,19,21	0.56	0
2	NAG	C	2	2	14,14,15	0.70	1 (7%)	17,19,21	0.71	0
2	BMA	C	3	2	11,11,12	0.76	0	15,15,17	0.90	0
2	MAN	C	4	2	11,11,12	1.60	2 (18%)	15,15,17	1.57	3 (20%)
2	FUC	C	5	2	10,10,11	0.82	0	14,14,16	0.96	0
3	NAG	D	1	3,1	14,14,15	0.65	0	17,19,21	0.65	0
3	NAG	D	2	3	14,14,15	0.56	0	17,19,21	0.39	0
3	FUC	D	3	3	10,10,11	1.04	1 (10%)	14,14,16	0.76	0

In the following table, the Chirals column lists the number of chiral outliers, the number of chiral centers analysed, the number of these observed in the model and the number defined in the Chemical Component Dictionary. Similar counts are reported in the Torsion and Rings columns. '-' means no outliers of that kind were identified.

Mol	Type	Chain	Res	Link	Chirals	Torsions	Rings
2	NAG	C	1	1,2	-	0/6/23/26	0/1/1/1
2	NAG	C	2	2	-	0/6/23/26	0/1/1/1
2	BMA	C	3	2	-	0/2/19/22	0/1/1/1
2	MAN	C	4	2	-	0/2/19/22	0/1/1/1
2	FUC	C	5	2	-	-	0/1/1/1
3	NAG	D	1	3,1	-	1/6/23/26	0/1/1/1
3	NAG	D	2	3	-	3/6/23/26	0/1/1/1
3	FUC	D	3	3	-	-	0/1/1/1

All (5) bond length outliers are listed below:

Mol	Chain	Res	Type	Atoms	Z	Observed(Å)	Ideal(Å)
2	C	4	MAN	C1-C2	3.66	1.60	1.52
2	C	4	MAN	C2-C3	3.55	1.57	1.52
2	C	2	NAG	O5-C1	-2.45	1.39	1.43
3	D	3	FUC	O5-C1	-2.36	1.39	1.43
2	C	1	NAG	O5-C1	-2.15	1.40	1.43

All (3) bond angle outliers are listed below:

Mol	Chain	Res	Type	Atoms	Z	Observed(°)	Ideal(°)
2	C	4	MAN	C1-C2-C3	3.44	113.89	109.67
2	C	4	MAN	O5-C1-C2	2.26	114.26	110.77
2	C	4	MAN	O2-C2-C3	-2.11	105.91	110.14

There are no chirality outliers.

All (4) torsion outliers are listed below:

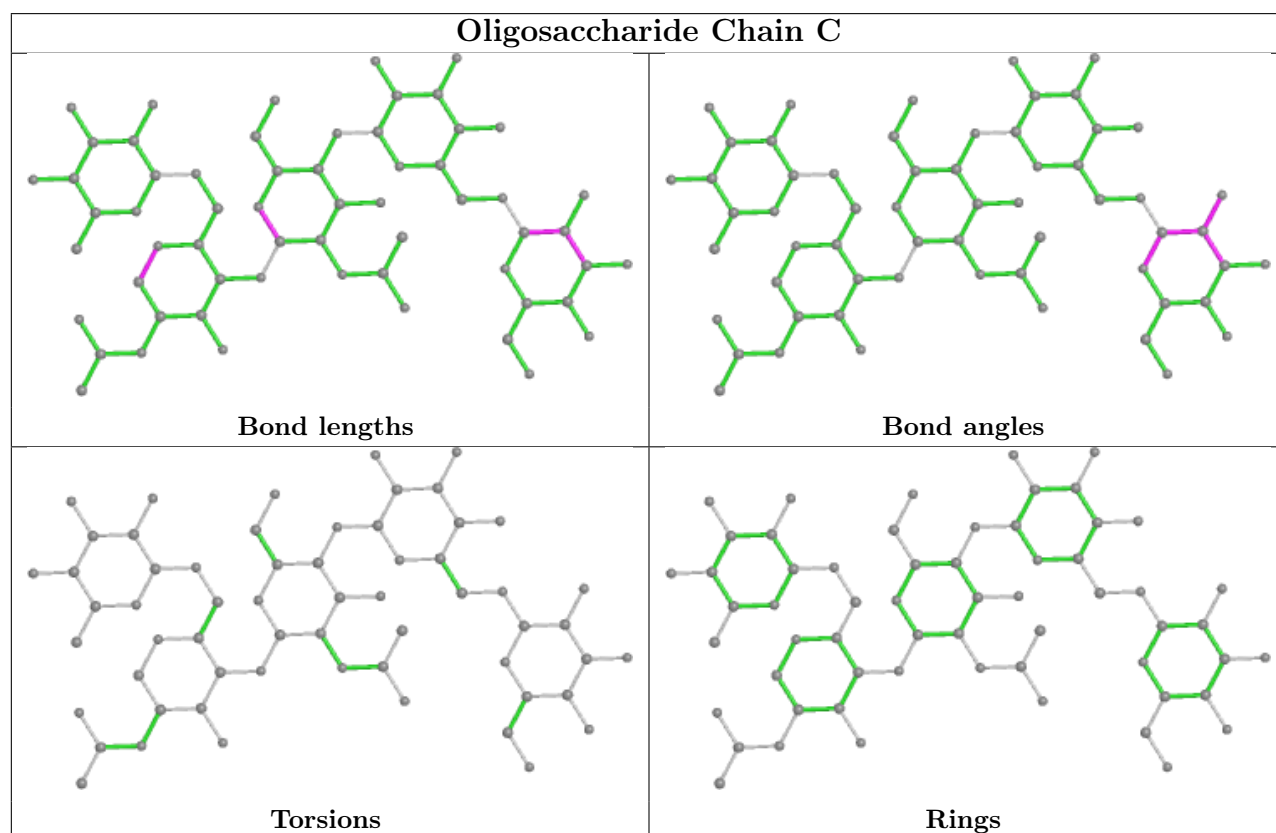
Mol	Chain	Res	Type	Atoms
3	D	2	NAG	C4-C5-C6-O6
3	D	2	NAG	O5-C5-C6-O6
3	D	1	NAG	C3-C2-N2-C7
3	D	2	NAG	C3-C2-N2-C7

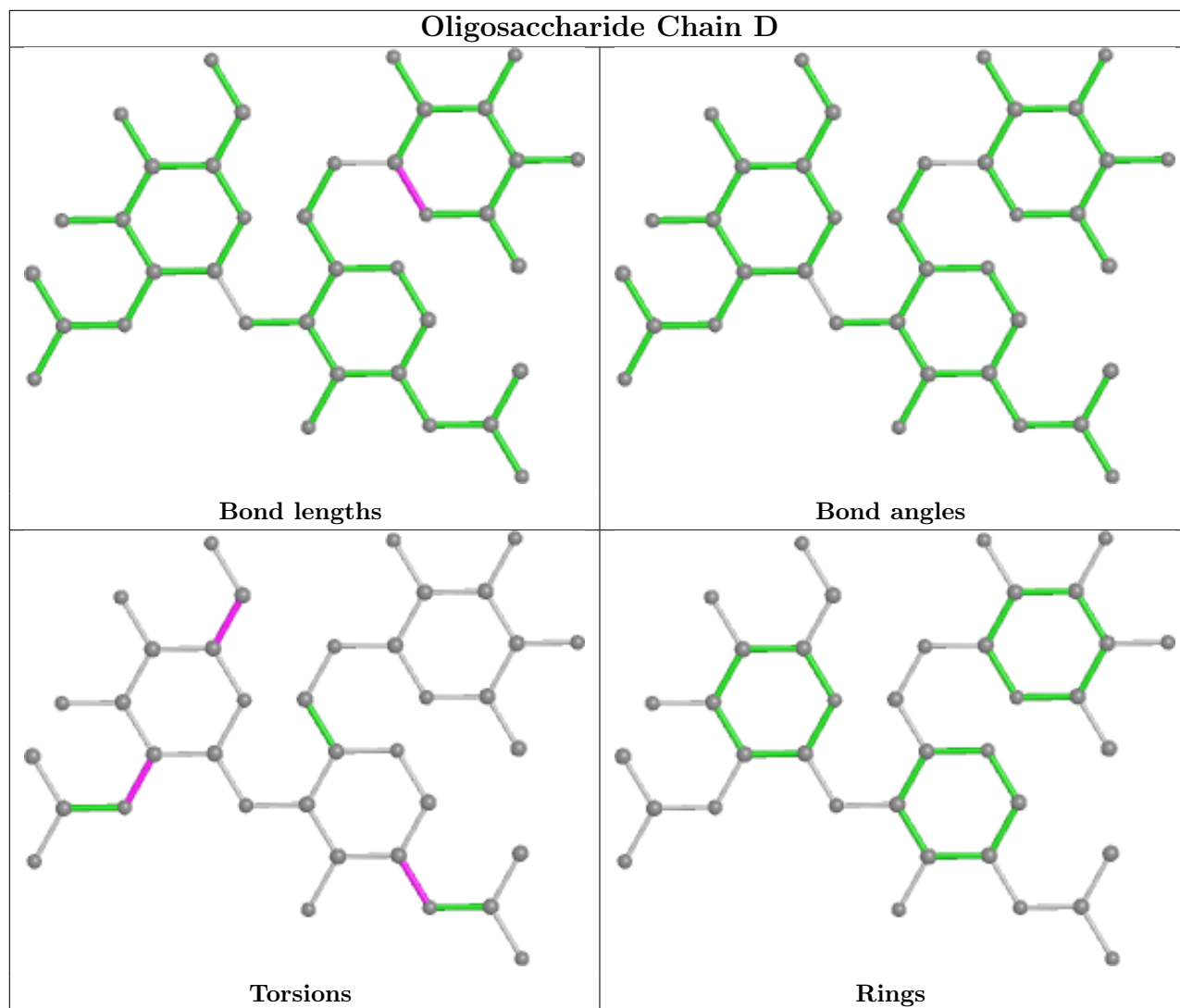
There are no ring outliers.

2 monomers are involved in 2 short contacts:

Mol	Chain	Res	Type	Clashes	Symm-Clashes
3	D	3	FUC	1	0
3	D	1	NAG	1	0

The following is a two-dimensional graphical depiction of Mogul quality analysis of bond lengths, bond angles, torsion angles, and ring geometry for oligosaccharide.





## 5.6 Ligand geometry [i](#)

Of 28 ligands modelled in this entry, 9 are monoatomic - leaving 19 for Mogul analysis.

In the following table, the Counts columns list the number of bonds (or angles) for which Mogul statistics could be retrieved, the number of bonds (or angles) that are observed in the model and the number of bonds (or angles) that are defined in the Chemical Component Dictionary. The Link column lists molecule types, if any, to which the group is linked. The Z score for a bond length (or angle) is the number of standard deviations the observed value is removed from the expected value. A bond length (or angle) with  $|Z| > 2$  is considered an outlier worth inspection. RMSZ is the root-mean-square of all Z scores of the bond lengths (or angles).

Mol	Type	Chain	Res	Link	Bond lengths			Bond angles		
					Counts	RMSZ	$\# Z  > 2$	Counts	RMSZ	$\# Z  > 2$
9	EDO	B	711	-	3,3,3	0.52	0	2,2,2	0.23	0
7	NAG	B	707	1	14,14,15	0.52	0	17,19,21	0.64	0
13	P33	B	716	-	21,21,21	0.59	0	20,20,20	0.62	0

Mol	Type	Chain	Res	Link	Bond lengths			Bond angles		
					Counts	RMSZ	# Z  > 2	Counts	RMSZ	# Z  > 2
9	EDO	B	710	-	3,3,3	0.55	0	2,2,2	0.09	0
9	EDO	B	709	-	3,3,3	0.55	0	2,2,2	0.21	0
9	EDO	A	717	-	3,3,3	0.34	0	2,2,2	0.31	0
9	EDO	A	716[A]	-	3,3,3	0.47	0	2,2,2	0.66	0
12	PGE	B	713	-	9,9,9	0.27	0	8,8,8	0.49	0
7	NAG	A	705	1	14,14,15	0.27	0	17,19,21	0.56	0
5	D0Z	B	702	4	40,41,41	2.31	10 (25%)	47,57,57	2.60	11 (23%)
7	NAG	B	706	1	14,14,15	0.61	0	17,19,21	0.59	0
7	NAG	B	705	1	14,14,15	0.49	0	17,19,21	0.40	0
9	EDO	B	712	-	3,3,3	0.46	0	2,2,2	0.29	0
12	PGE	B	714	-	9,9,9	0.30	0	8,8,8	0.43	0
10	PEG	B	715	-	6,6,6	0.46	0	5,5,5	0.30	0
9	EDO	A	718	-	3,3,3	0.50	0	2,2,2	0.22	0
10	PEG	A	719	-	6,6,6	0.52	0	5,5,5	0.36	0
11	PG4	A	720	-	12,12,12	0.54	0	11,11,11	0.72	0
5	D0Z	A	702	4	40,41,41	2.32	11 (27%)	47,57,57	2.33	16 (34%)

In the following table, the Chirals column lists the number of chiral outliers, the number of chiral centers analysed, the number of these observed in the model and the number defined in the Chemical Component Dictionary. Similar counts are reported in the Torsion and Rings columns. '-' means no outliers of that kind were identified.

Mol	Type	Chain	Res	Link	Chirals	Torsions	Rings
9	EDO	B	711	-	-	1/1/1/1	-
7	NAG	B	707	1	-	2/6/23/26	0/1/1/1
13	P33	B	716	-	-	8/19/19/19	-
9	EDO	B	710	-	-	0/1/1/1	-
9	EDO	B	709	-	-	1/1/1/1	-
9	EDO	A	717	-	-	1/1/1/1	-
9	EDO	A	716[A]	-	-	1/1/1/1	-
12	PGE	B	713	-	-	4/7/7/7	-
7	NAG	A	705	1	-	0/6/23/26	0/1/1/1
5	D0Z	B	702	4	-	13/46/55/55	0/2/2/2
7	NAG	B	706	1	-	2/6/23/26	0/1/1/1
7	NAG	B	705	1	-	0/6/23/26	0/1/1/1
9	EDO	B	712	-	-	0/1/1/1	-
12	PGE	B	714	-	-	3/7/7/7	-
10	PEG	B	715	-	-	0/4/4/4	-
9	EDO	A	718	-	-	0/1/1/1	-
10	PEG	A	719	-	-	1/4/4/4	-
11	PG4	A	720	-	-	5/10/10/10	-

Continued on next page...

Continued from previous page...

Mol	Type	Chain	Res	Link	Chirals	Torsions	Rings
5	D0Z	A	702	4	-	10/46/55/55	0/2/2/2

All (21) bond length outliers are listed below:

Mol	Chain	Res	Type	Atoms	Z	Observed(Å)	Ideal(Å)
5	B	702	D0Z	C19-C18	7.36	1.70	1.54
5	A	702	D0Z	C19-C18	6.51	1.68	1.54
5	B	702	D0Z	C22-C18	-6.36	1.40	1.54
5	A	702	D0Z	C12-N14	5.65	1.45	1.33
5	A	702	D0Z	C23-N25	5.33	1.44	1.34
5	A	702	D0Z	C22-C18	-5.32	1.43	1.54
5	A	702	D0Z	S02-N05	4.86	1.72	1.62
5	B	702	D0Z	C12-N14	4.78	1.44	1.33
5	B	702	D0Z	C23-N25	3.92	1.41	1.34
5	A	702	D0Z	C19-C20	-3.63	1.40	1.52
5	B	702	D0Z	S02-N05	3.52	1.69	1.62
5	B	702	D0Z	O13-C12	-3.37	1.16	1.23
5	B	702	D0Z	C19-C20	-3.14	1.41	1.52
5	A	702	D0Z	O37-C35	2.86	1.30	1.22
5	B	702	D0Z	C22-C21	2.80	1.61	1.52
5	B	702	D0Z	O04-S02	2.79	1.48	1.43
5	A	702	D0Z	C22-C21	2.65	1.61	1.52
5	A	702	D0Z	O04-S02	2.46	1.47	1.43
5	B	702	D0Z	O34-C31	2.42	1.42	1.37
5	A	702	D0Z	O34-C31	2.33	1.42	1.37
5	A	702	D0Z	O13-C12	-2.18	1.19	1.23

All (27) bond angle outliers are listed below:

Mol	Chain	Res	Type	Atoms	Z	Observed(°)	Ideal(°)
5	B	702	D0Z	O04-S02-O03	-13.53	99.40	118.85
5	A	702	D0Z	O04-S02-O03	-9.76	104.81	118.85
5	A	702	D0Z	O04-S02-C01	5.19	116.61	108.28
5	B	702	D0Z	C16-C15-N14	-4.60	106.41	112.60
5	B	702	D0Z	O04-S02-C01	4.17	114.97	108.28
5	B	702	D0Z	O03-S02-N05	3.87	113.15	107.23
5	A	702	D0Z	C22-C18-C19	3.86	107.15	102.35
5	A	702	D0Z	C16-C15-N14	-3.34	108.11	112.60
5	A	702	D0Z	O03-S02-C01	3.10	113.26	108.28
5	A	702	D0Z	O39-C38-O40	-3.04	117.19	124.09
5	A	702	D0Z	O24-C23-C18	2.91	126.06	121.80
5	A	702	D0Z	C33-C28-C29	2.77	122.52	118.17

Continued on next page...

*Continued from previous page...*

Mol	Chain	Res	Type	Atoms	Z	Observed(°)	Ideal(°)
5	A	702	D0Z	O39-C38-C16	2.75	121.41	114.21
5	B	702	D0Z	C12-C06-N05	-2.73	103.83	111.17
5	B	702	D0Z	C21-C22-C18	2.58	108.10	105.00
5	A	702	D0Z	C07-C06-N05	-2.55	105.53	110.21
5	A	702	D0Z	C35-C26-N25	-2.51	104.61	110.55
5	A	702	D0Z	C08-C07-C06	-2.50	106.21	113.92
5	B	702	D0Z	C32-C33-C28	-2.42	117.70	121.03
5	B	702	D0Z	C33-C28-C29	2.35	121.87	118.17
5	A	702	D0Z	O24-C23-N25	-2.31	118.03	122.74
5	A	702	D0Z	C30-C29-C28	-2.27	117.90	121.03
5	B	702	D0Z	O13-C12-N14	-2.15	118.38	122.99
5	B	702	D0Z	C20-C19-C18	2.09	107.51	105.00
5	A	702	D0Z	O36-C35-O37	-2.04	119.46	124.09
5	A	702	D0Z	C27-C28-C33	-2.01	116.91	120.91
5	B	702	D0Z	O39-C38-C16	2.00	119.45	114.21

There are no chirality outliers.

All (52) torsion outliers are listed below:

Mol	Chain	Res	Type	Atoms
5	A	702	D0Z	C19-C18-C23-N25
5	A	702	D0Z	C19-C18-C23-O24
5	A	702	D0Z	C22-C18-C23-N25
5	A	702	D0Z	C06-N05-S02-C01
5	A	702	D0Z	C06-N05-S02-O03
5	B	702	D0Z	C19-C18-C23-N25
5	B	702	D0Z	C19-C18-C23-O24
5	B	702	D0Z	C22-C18-C23-N25
5	B	702	D0Z	C06-N05-S02-C01
5	B	702	D0Z	C06-N05-S02-O03
7	B	706	NAG	O5-C5-C6-O6
5	A	702	D0Z	N25-C26-C27-C28
13	B	716	P33	O16-C17-C18-O19
11	A	720	PG4	O2-C3-C4-O3
7	B	707	NAG	O5-C5-C6-O6
13	B	716	P33	O10-C11-C12-O13
7	B	707	NAG	C4-C5-C6-O6
12	B	714	PGE	O3-C5-C6-O4
13	B	716	P33	O1-C2-C3-O4
12	B	713	PGE	O2-C3-C4-O3
7	B	706	NAG	C4-C5-C6-O6
5	B	702	D0Z	N25-C26-C27-C28

*Continued on next page...*

*Continued from previous page...*

Mol	Chain	Res	Type	Atoms
11	A	720	PG4	O1-C1-C2-O2
12	B	713	PGE	O1-C1-C2-O2
12	B	714	PGE	O2-C3-C4-O3
5	B	702	D0Z	C35-C26-C27-C28
5	A	702	D0Z	C35-C26-C27-C28
5	A	702	D0Z	C08-C09-C10-N11
5	A	702	D0Z	C17-C18-C23-O24
5	B	702	D0Z	C22-C18-C23-O24
12	B	713	PGE	C6-C5-O3-C4
12	B	714	PGE	C1-C2-O2-C3
13	B	716	P33	C14-C15-O16-C17
12	B	713	PGE	C4-C3-O2-C2
5	B	702	D0Z	C06-C07-C08-C09
13	B	716	P33	C5-C6-O7-C8
10	A	719	PEG	O2-C3-C4-O4
9	A	716[A]	EDO	O1-C1-C2-O2
9	A	717	EDO	O1-C1-C2-O2
9	B	711	EDO	O1-C1-C2-O2
13	B	716	P33	C9-C8-O7-C6
5	A	702	D0Z	C17-C18-C23-N25
5	B	702	D0Z	C17-C18-C23-N25
5	B	702	D0Z	C17-C18-C23-O24
13	B	716	P33	O13-C14-C15-O16
9	B	709	EDO	O1-C1-C2-O2
13	B	716	P33	C18-C17-O16-C15
11	A	720	PG4	C4-C3-O2-C2
5	B	702	D0Z	C38-C16-C17-C18
5	B	702	D0Z	C07-C08-C09-C10
11	A	720	PG4	C5-C6-O4-C7
11	A	720	PG4	O3-C5-C6-O4

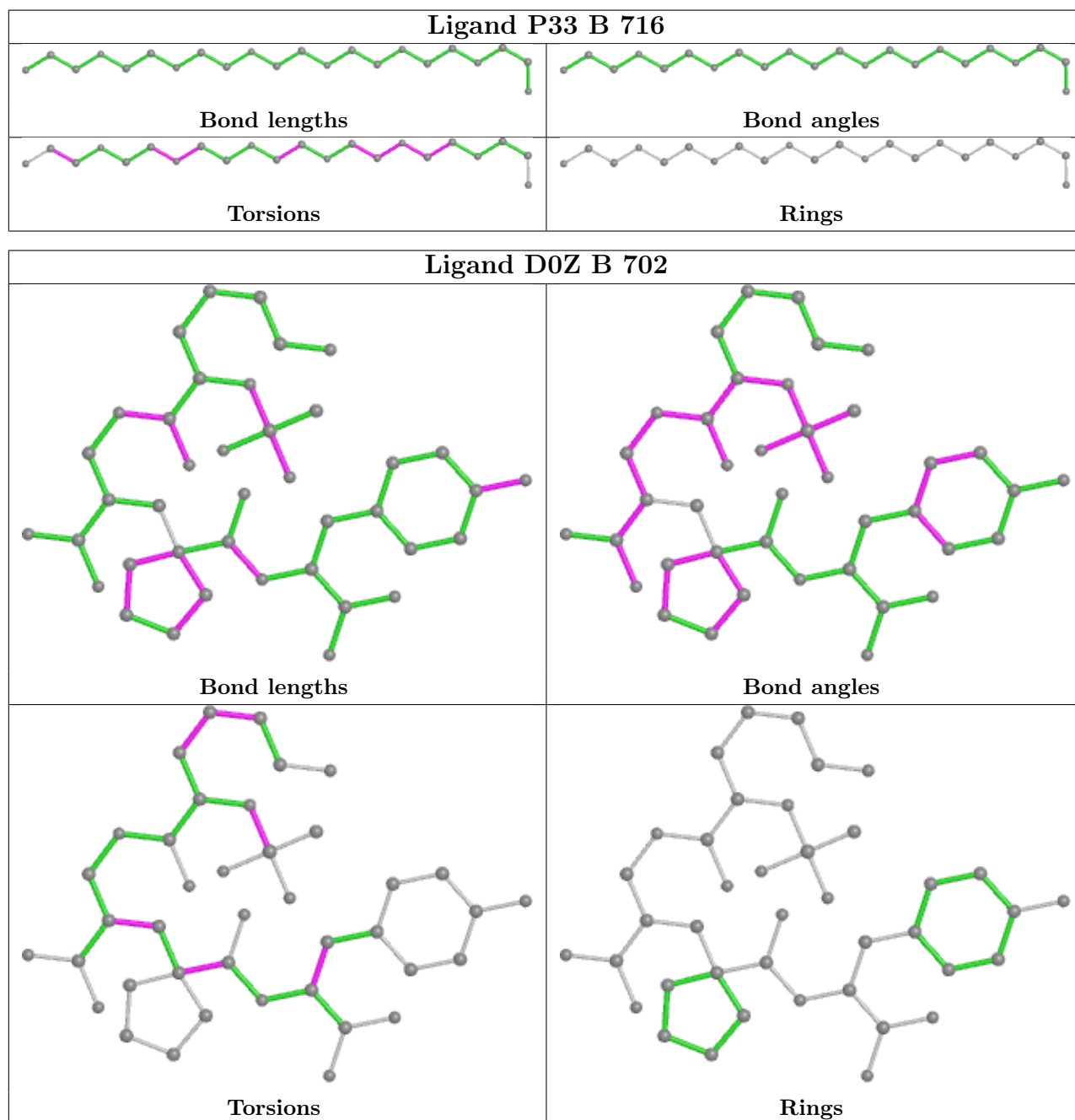
There are no ring outliers.

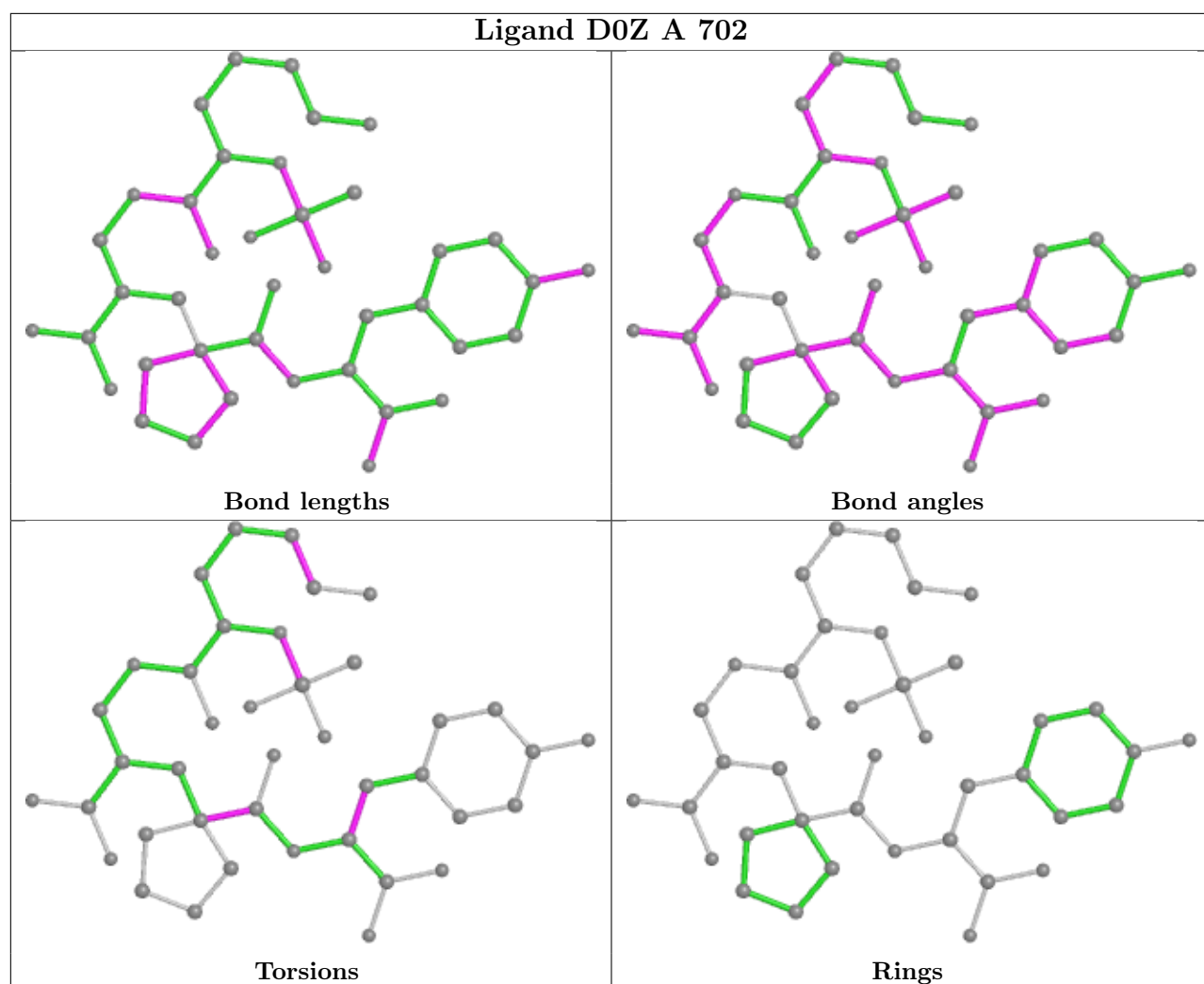
6 monomers are involved in 12 short contacts:

Mol	Chain	Res	Type	Clashes	Symm-Clashes
7	B	707	NAG	1	0
9	B	710	EDO	1	0
9	A	716[A]	EDO	3	0
5	B	702	D0Z	1	0
11	A	720	PG4	5	0
5	A	702	D0Z	1	0



The following is a two-dimensional graphical depiction of Mogul quality analysis of bond lengths, bond angles, torsion angles, and ring geometry for all instances of the Ligand of Interest. In addition, ligands with molecular weight > 250 and outliers as shown on the validation Tables will also be included. For torsion angles, if less than 5% of the Mogul distribution of torsion angles is within 10 degrees of the torsion angle in question, then that torsion angle is considered an outlier. Any bond that is central to one or more torsion angles identified as an outlier by Mogul will be highlighted in the graph. For rings, the root-mean-square deviation (RMSD) between the ring in question and similar rings identified by Mogul is calculated over all ring torsion angles. If the average RMSD is greater than 60 degrees and the minimal RMSD between the ring in question and any Mogul-identified rings is also greater than 60 degrees, then that ring is considered an outlier. The outliers are highlighted in purple. The color gray indicates Mogul did not find sufficient equivalents in the CSD to analyse the geometry.





## 5.7 Other polymers [i](#)

There are no such residues in this entry.

## 5.8 Polymer linkage issues [i](#)

There are no chain breaks in this entry.

## 6 Fit of model and data

### 6.1 Protein, DNA and RNA chains

In the following table, the column labelled ‘#RSRZ > 2’ contains the number (and percentage) of RSRZ outliers, followed by percent RSRZ outliers for the chain as percentile scores relative to all X-ray entries and entries of similar resolution. The OWAB column contains the minimum, median, 95<sup>th</sup> percentile and maximum values of the occupancy-weighted average B-factor per residue. The column labelled ‘Q < 0.9’ lists the number of (and percentage) of residues with an average occupancy less than 0.9.

Mol	Chain	Analysed	<RSRZ>	#RSRZ>2	OWAB(Å <sup>2</sup> )	Q<0.9
1	A	605/629 (96%)	0.47	26 (4%) 35 39	20, 28, 48, 90	0
1	B	604/629 (96%)	0.65	45 (7%) 14 16	20, 37, 65, 86	0
All	All	1209/1258 (96%)	0.56	71 (5%) 22 24	20, 32, 59, 90	0

All (71) RSRZ outliers are listed below:

Mol	Chain	Res	Type	RSRZ
1	A	325	GLY	8.0
1	B	1	LEU	5.8
1	B	414	VAL	5.2
1	B	413	ARG	5.2
1	B	105	LEU	4.1
1	A	607	TYR	4.1
1	B	84	THR	4.0
1	B	415	THR	4.0
1	B	90	ARG	4.0
1	B	129	LEU	4.0
1	B	325	GLY	3.9
1	B	135	THR	3.9
1	A	80[A]	TRP	3.9
1	B	82	GLN	3.8
1	B	78	PRO	3.8
1	B	81	GLN	3.7
1	A	609	GLU	3.6
1	A	9[A]	GLN	3.5
1	B	420	SER	3.2
1	A	73[A]	LYS	3.2
1	B	80	TRP	3.1
1	B	375	LEU	3.1
1	B	412	ASP	3.0
1	B	101	ALA	2.9

*Continued on next page...*

*Continued from previous page...*

<b>Mol</b>	<b>Chain</b>	<b>Res</b>	<b>Type</b>	<b>RSRZ</b>
1	A	79[A]	ILE	2.9
1	B	75	LEU	2.9
1	B	609	GLU	2.9
1	B	606	ASN	2.8
1	B	31	VAL	2.8
1	B	17	ALA	2.8
1	B	136	CYS	2.8
1	B	524	PRO	2.8
1	B	83	PHE	2.7
1	A	606	ASN	2.6
1	A	91[A]	ILE	2.6
1	B	76	TYR	2.6
1	A	84[A]	THR	2.6
1	B	92	ILE	2.6
1	A	5[A]	LEU	2.5
1	A	19[A]	LEU	2.5
1	A	83[A]	PHE	2.5
1	A	129	LEU	2.5
1	B	522	GLU	2.4
1	A	10[A]	PHE	2.4
1	A	64[A]	PHE	2.4
1	B	96	ARG	2.4
1	B	187	LYS	2.3
1	A	135	THR	2.3
1	A	41[A]	ALA	2.3
1	A	52	ARG	2.2
1	A	88[A]	LEU	2.2
1	A	86[A]	PRO	2.2
1	B	607	TYR	2.2
1	A	81[A]	GLN	2.2
1	A	24[A]	TYR	2.2
1	B	128	CYS	2.2
1	A	414	VAL	2.2
1	B	207	PHE	2.1
1	B	338	TYR	2.1
1	B	521	TYR	2.1
1	B	86	PRO	2.1
1	A	87[A]	GLN	2.1
1	B	203	ASN	2.1
1	B	272	PRO	2.1
1	B	383	ALA	2.1
1	A	48	ALA	2.1

*Continued on next page...*

*Continued from previous page...*

Mol	Chain	Res	Type	RSRZ
1	B	379	LEU	2.1
1	B	72	ALA	2.1
1	B	69	GLY	2.1
1	B	103	LEU	2.0
1	B	525	LEU	2.0

## 6.2 Non-standard residues in protein, DNA, RNA chains [i](#)

There are no non-standard protein/DNA/RNA residues in this entry.

## 6.3 Carbohydrates [i](#)

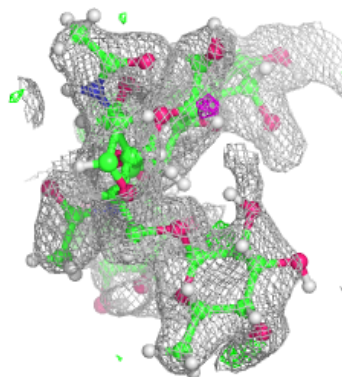
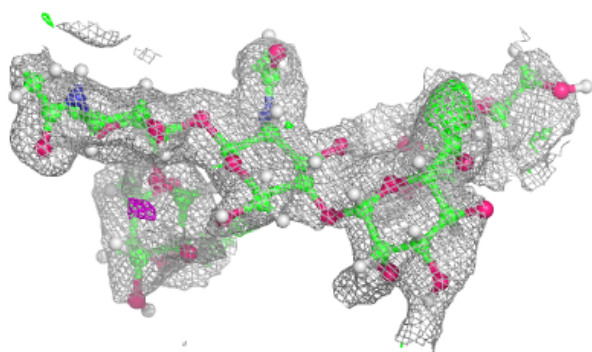
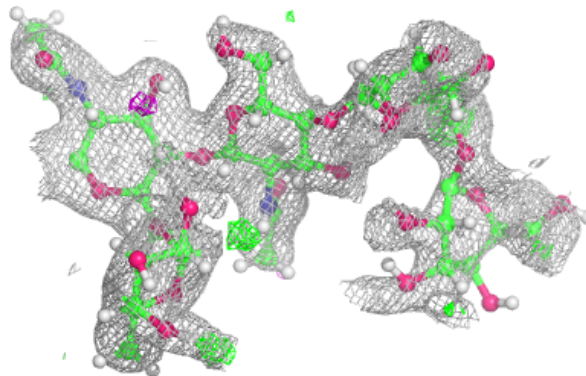
In the following table, the Atoms column lists the number of modelled atoms in the group and the number defined in the chemical component dictionary. The B-factors column lists the minimum, median, 95<sup>th</sup> percentile and maximum values of B factors of atoms in the group. The column labelled 'Q< 0.9' lists the number of atoms with occupancy less than 0.9.

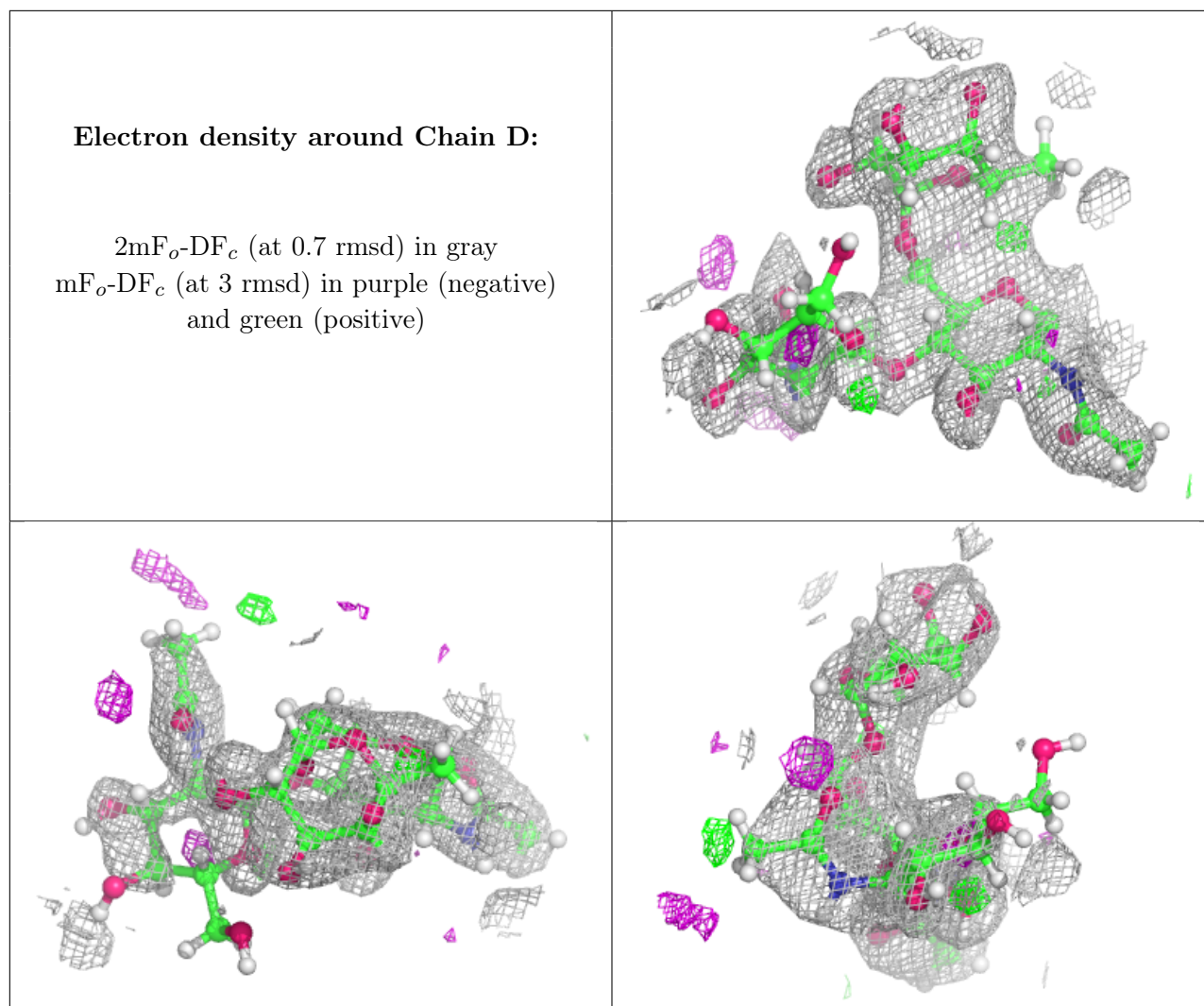
Mol	Type	Chain	Res	Atoms	RSCC	RSR	B-factors(Å <sup>2</sup> )	Q<0.9
2	MAN	C	4	11/12	0.54	0.23	85,106,127,132	0
2	BMA	C	3	11/12	0.62	0.18	63,73,88,92	0
3	NAG	D	2	14/15	0.72	0.21	53,76,96,100	0
2	FUC	C	5	10/11	0.86	0.15	34,44,55,64	21
3	FUC	D	3	10/11	0.86	0.14	51,61,79,84	0
2	NAG	C	2	14/15	0.91	0.13	38,54,67,69	0
3	NAG	D	1	14/15	0.91	0.12	34,47,58,65	0
2	NAG	C	1	14/15	0.94	0.11	32,42,56,56	0

The following is a graphical depiction of the model fit to experimental electron density for oligosaccharide. Each fit is shown from different orientation to approximate a three-dimensional view.

**Electron density around Chain C:**

$2mF_o-DF_c$  (at 0.7 rmsd) in gray  
 $mF_o-DF_c$  (at 3 rmsd) in purple (negative)  
and green (positive)





## 6.4 Ligands [i](#)

In the following table, the Atoms column lists the number of modelled atoms in the group and the number defined in the chemical component dictionary. The B-factors column lists the minimum, median, 95<sup>th</sup> percentile and maximum values of B factors of atoms in the group. The column labelled 'Q< 0.9' lists the number of atoms with occupancy less than 0.9.

Mol	Type	Chain	Res	Atoms	RSCC	RSR	B-factors(Å <sup>2</sup> )	Q<0.9
7	NAG	B	707	14/15	0.65	0.15	46,58,71,76	0
9	EDO	B	709	4/4	0.74	0.13	54,65,68,70	0
7	NAG	B	705	14/15	0.75	0.21	52,70,80,84	28
7	NAG	A	705	14/15	0.80	0.19	49,63,75,77	0
10	PEG	B	715	7/7	0.80	0.13	45,62,71,82	0
7	NAG	B	706	14/15	0.82	0.31	52,76,92,99	0
13	P33	B	716	22/22	0.82	0.13	37,55,69,74	0
11	PG4	A	720	13/13	0.83	0.13	27,51,64,70	31

*Continued on next page...*

*Continued from previous page...*

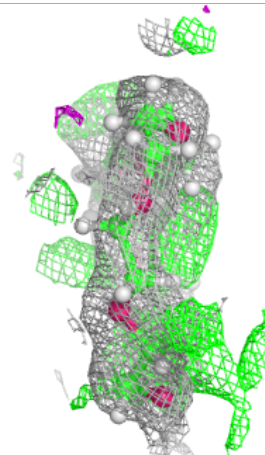
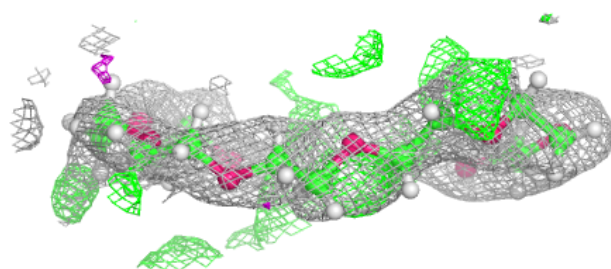
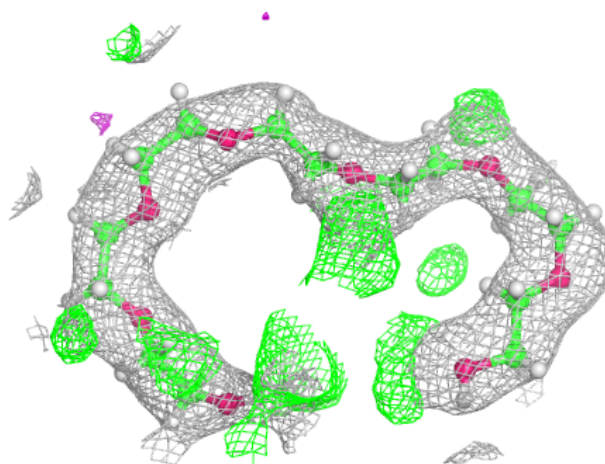
Mol	Type	Chain	Res	Atoms	RSCC	RSR	B-factors(Å <sup>2</sup> )	Q<0.9
9	EDO	B	712	4/4	0.84	0.15	54,65,77,82	0
12	PGE	B	713	10/10	0.85	0.13	36,45,53,53	24
9	EDO	A	718	4/4	0.86	0.09	48,57,67,73	0
9	EDO	B	710	4/4	0.87	0.24	30,46,50,56	10
9	EDO	A	716[A]	4/4	0.88	0.17	30,38,48,58	9
10	PEG	A	719	7/7	0.90	0.13	39,47,57,57	17
12	PGE	B	714	10/10	0.93	0.10	38,47,65,66	0
9	EDO	B	711	4/4	0.93	0.07	47,57,62,72	0
8	MG	A	715	1/1	0.94	0.12	35,35,35,35	0
9	EDO	A	717	4/4	0.95	0.25	29,34,45,45	10
5	D0Z	A	702	40/40	0.96	0.11	19,28,41,48	0
5	D0Z	B	702	40/40	0.96	0.11	18,27,42,46	0
6	CL	B	704	1/1	0.96	0.18	35,35,35,35	0
6	CL	B	703	1/1	0.98	0.18	30,30,30,30	0
8	MG	A	714	1/1	0.98	0.08	33,33,33,33	0
8	MG	B	708	1/1	0.99	0.14	24,24,24,24	0
6	CL	A	704	1/1	0.99	0.15	26,26,26,26	0
6	CL	A	703	1/1	1.00	0.16	22,22,22,22	0
4	ZN	A	701	1/1	1.00	0.14	21,21,21,21	0
4	ZN	B	701	1/1	1.00	0.15	22,22,22,22	0

The following is a graphical depiction of the model fit to experimental electron density of all instances of the Ligand of Interest. In addition, ligands with molecular weight > 250 and outliers as shown on the geometry validation Tables will also be included. Each fit is shown from different orientation to approximate a three-dimensional view.



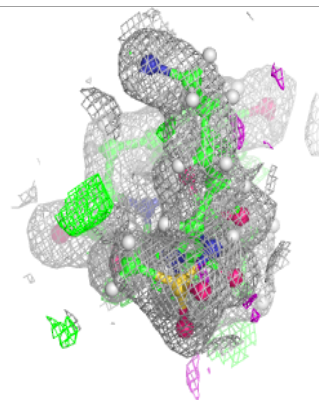
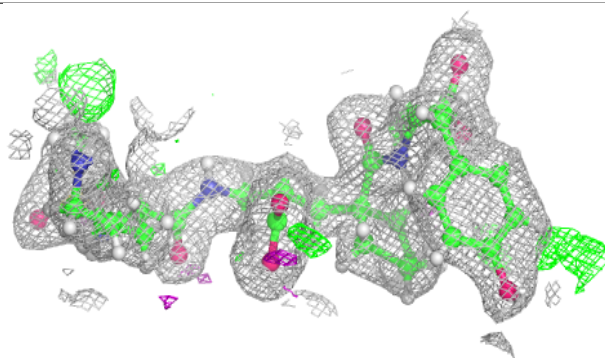
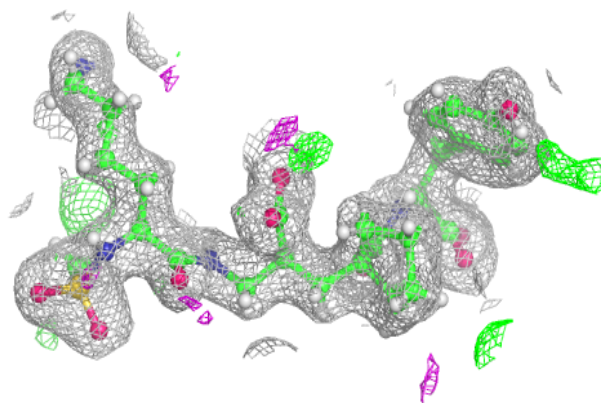
**Electron density around P33 B 716:**

$2mF_o-DF_c$  (at 0.7 rmsd) in gray  
 $mF_o-DF_c$  (at 3 rmsd) in purple (negative)  
and green (positive)

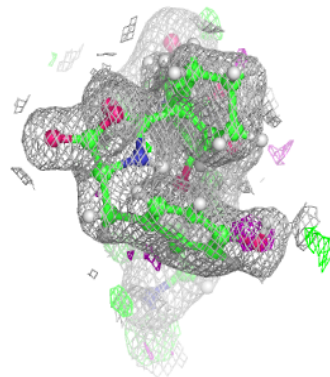
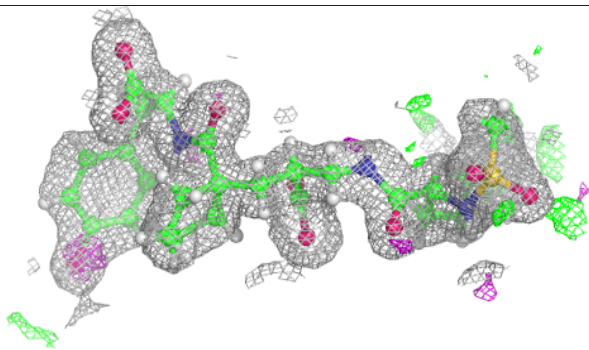
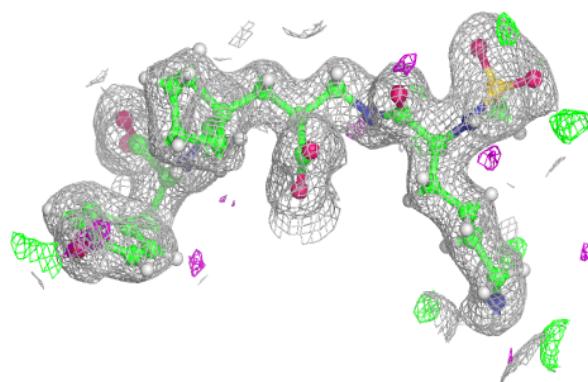


**Electron density around D0Z A 702:**

$2mF_o-DF_c$  (at 0.7 rmsd) in gray  
 $mF_o-DF_c$  (at 3 rmsd) in purple (negative)  
and green (positive)

**Electron density around D0Z B 702:**

$2mF_o-DF_c$  (at 0.7 rmsd) in gray  
 $mF_o-DF_c$  (at 3 rmsd) in purple (negative)  
and green (positive)



## 6.5 Other polymers [i](#)

There are no such residues in this entry.