



Full wwPDB X-ray Structure Validation Report ⓘ

May 19, 2020 – 02:48 am BST

PDB ID : 4EQS
Title : Crystal structure of the Y419F mutant of Staphylococcus aureus CoADR
Authors : Wallace, B.D.; Edwards, J.S.; Wallen, J.R.; Claiborne, A.; Redinbo, M.R.
Deposited on : 2012-04-19
Resolution : 1.50 Å(reported)

This is a Full wwPDB X-ray Structure Validation Report for a publicly released PDB entry.

We welcome your comments at validation@mail.wwpdb.org

A user guide is available at

<https://www.wwpdb.org/validation/2017/XrayValidationReportHelp>

with specific help available everywhere you see the ⓘ symbol.

The following versions of software and data (see [references ⓘ](#)) were used in the production of this report:

MolProbity : 4.02b-467
Mogul : 1.8.5 (274361), CSD as541be (2020)
Xtriage (Phenix) : 1.13
EDS : 2.11
buster-report : 1.1.7 (2018)
Percentile statistics : 20191225.v01 (using entries in the PDB archive December 25th 2019)
Refmac : 5.8.0158
CCP4 : 7.0.044 (Gargrove)
Ideal geometry (proteins) : Engh & Huber (2001)
Ideal geometry (DNA, RNA) : Parkinson et al. (1996)
Validation Pipeline (wwPDB-VP) : 2.11

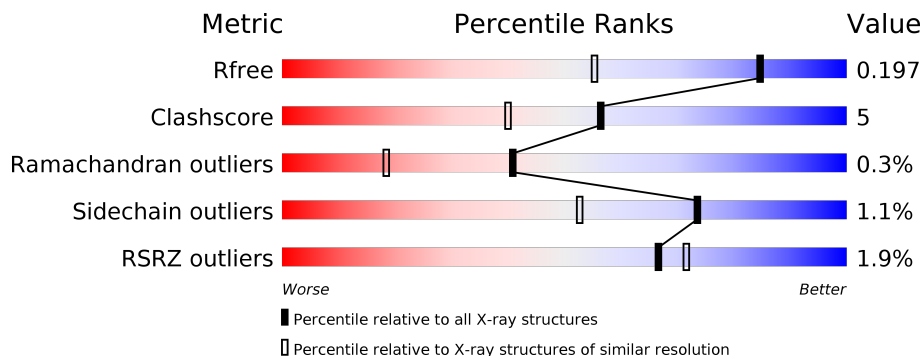
1 Overall quality at a glance

The following experimental techniques were used to determine the structure:

X-RAY DIFFRACTION

The reported resolution of this entry is 1.50 Å.

Percentile scores (ranging between 0-100) for global validation metrics of the entry are shown in the following graphic. The table shows the number of entries on which the scores are based.



Metric	Whole archive (#Entries)	Similar resolution (#Entries, resolution range(Å))
R_{free}	130704	2936 (1.50-1.50)
Clashscore	141614	3144 (1.50-1.50)
Ramachandran outliers	138981	3066 (1.50-1.50)
Sidechain outliers	138945	3064 (1.50-1.50)
RSRZ outliers	127900	2884 (1.50-1.50)

The table below summarises the geometric issues observed across the polymeric chains and their fit to the electron density. The red, orange, yellow and green segments on the lower bar indicate the fraction of residues that contain outliers for ≥ 3 , 2, 1 and 0 types of geometric quality criteria respectively. A grey segment represents the fraction of residues that are not modelled. The numeric value for each fraction is indicated below the corresponding segment, with a dot representing fractions $\leq 5\%$. The upper red bar (where present) indicates the fraction of residues that have poor fit to the electron density. The numeric value is given above the bar.

Mol	Chain	Length	Quality of chain
1	A	437	 2% 92% 8%
1	B	437	 2% 90% 9%

2 Entry composition [i](#)

There are 6 unique types of molecules in this entry. The entry contains 8509 atoms, of which 0 are hydrogens and 0 are deuteriums.

In the tables below, the ZeroOcc column contains the number of atoms modelled with zero occupancy, the AltConf column contains the number of residues with at least one atom in alternate conformation and the Trace column contains the number of residues modelled with at most 2 atoms.

- Molecule 1 is a protein called Coenzyme A disulfide reductase.

Mol	Chain	Residues	Atoms					ZeroOcc	AltConf	Trace
			Total	C	N	O	S			
1	A	437	3496	2220	591	673	12	0	8	0
1	B	437	3503	2226	593	672	12	0	9	0

There are 2 discrepancies between the modelled and reference sequences:

Chain	Residue	Modelled	Actual	Comment	Reference
A	419	PHE	TYR	engineered mutation	UNP Q2FIA5
B	419	PHE	TYR	engineered mutation	UNP Q2FIA5

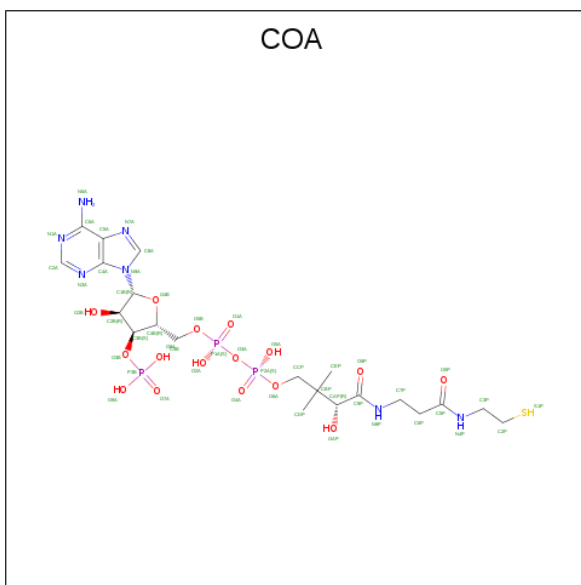
- Molecule 2 is MAGNESIUM ION (three-letter code: MG) (formula: Mg).

Mol	Chain	Residues	Atoms		ZeroOcc	AltConf
2	B	2	Total 2	Mg 2	0	0
2	A	1	Total 1	Mg 1	0	0

- Molecule 3 is CHLORIDE ION (three-letter code: CL) (formula: Cl).

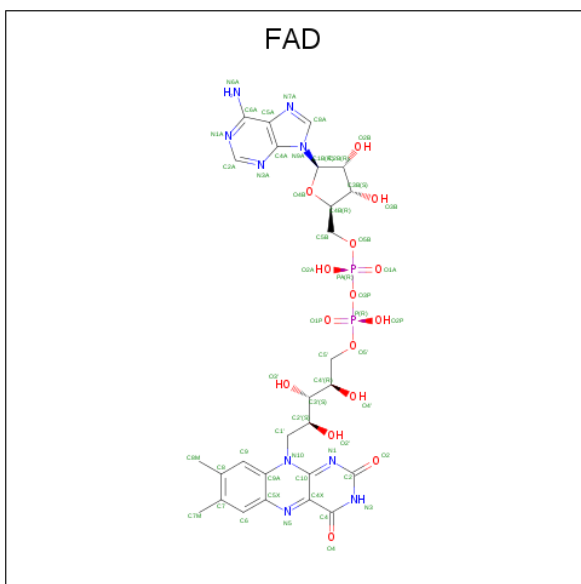
Mol	Chain	Residues	Atoms		ZeroOcc	AltConf
3	B	2	Total 2	Cl 2	0	0
3	A	4	Total 4	Cl 4	0	0

- Molecule 4 is COENZYME A (three-letter code: COA) (formula: C₂₁H₃₆N₇O₁₆P₃S).



Mol	Chain	Residues	Atoms					ZeroOcc	AltConf	
			Total	C	N	O	P			S
4	A	1	48	21	7	16	3	1	0	0
4	B	1	79	31	12	29	6	1	0	1

- Molecule 5 is FLAVIN-ADENINE DINUCLEOTIDE (three-letter code: FAD) (formula: $C_{27}H_{33}N_9O_{15}P_2$).



Mol	Chain	Residues	Atoms					ZeroOcc	AltConf
			Total	C	N	O	P		
5	A	1	53	27	9	15	2	0	0

Continued on next page...

Continued from previous page...

Mol	Chain	Residues	Atoms					ZeroOcc	AltConf
			Total	C	N	O	P		
5	B	1	53	27	9	15	2	0	0

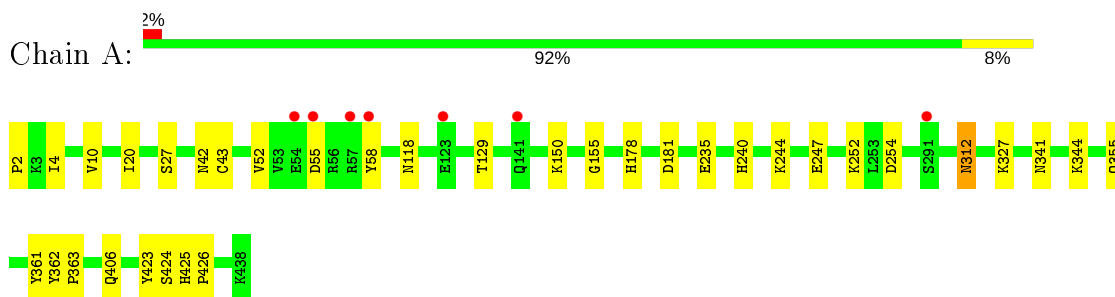
- Molecule 6 is water.

Mol	Chain	Residues	Atoms		ZeroOcc	AltConf
6	A	668	Total	O	0	0
			668	668		
6	B	600	Total	O	0	0
			600	600		

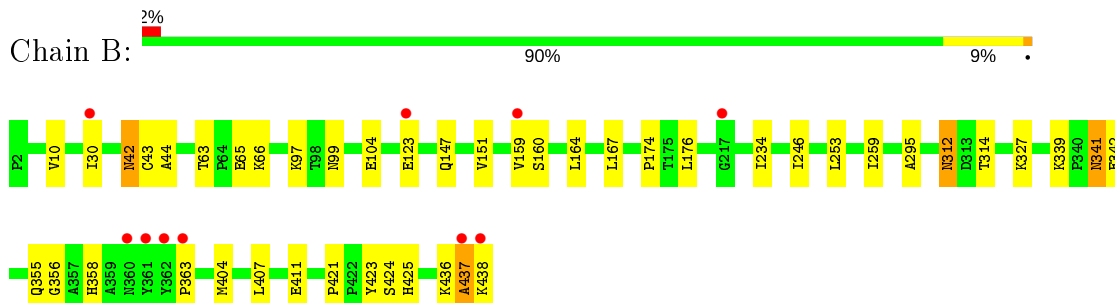
3 Residue-property plots [i](#)

These plots are drawn for all protein, RNA and DNA chains in the entry. The first graphic for a chain summarises the proportions of the various outlier classes displayed in the second graphic. The second graphic shows the sequence view annotated by issues in geometry and electron density. Residues are color-coded according to the number of geometric quality criteria for which they contain at least one outlier: green = 0, yellow = 1, orange = 2 and red = 3 or more. A red dot above a residue indicates a poor fit to the electron density ($RSRZ > 2$). Stretches of 2 or more consecutive residues without any outlier are shown as a green connector. Residues present in the sample, but not in the model, are shown in grey.

- Molecule 1: Coenzyme A disulfide reductase



- Molecule 1: Coenzyme A disulfide reductase



4 Data and refinement statistics

Property	Value	Source
Space group	P 1 21 1	Depositor
Cell constants a, b, c, α , β , γ	76.18Å 65.42Å 94.57Å 90.00° 104.74° 90.00°	Depositor
Resolution (Å)	51.34 – 1.50 51.35 – 1.50	Depositor EDS
% Data completeness (in resolution range)	95.1 (51.34-1.50) 95.4 (51.35-1.50)	Depositor EDS
R_{merge}	0.04	Depositor
R_{sym}	(Not available)	Depositor
$\langle I/\sigma(I) \rangle$ ¹	3.97 (at 1.50Å)	Xtrriage
Refinement program	PHENIX ?	Depositor
R, R_{free}	0.175 , 0.201 0.173 , 0.197	Depositor DCC
R_{free} test set	13234 reflections (9.65%)	wwPDB-VP
Wilson B-factor (Å ²)	18.3	Xtrriage
Anisotropy	0.326	Xtrriage
Bulk solvent k_{sol} (e/Å ³), B_{sol} (Å ²)	0.36 , 44.6	EDS
L-test for twinning ²	$\langle L \rangle = 0.48$, $\langle L^2 \rangle = 0.31$	Xtrriage
Estimated twinning fraction	No twinning to report.	Xtrriage
F_o, F_c correlation	0.97	EDS
Total number of atoms	8509	wwPDB-VP
Average B, all atoms (Å ²)	22.0	wwPDB-VP

Xtrriage's analysis on translational NCS is as follows: *The largest off-origin peak in the Patterson function is 4.99% of the height of the origin peak. No significant pseudotranslation is detected.*

¹Intensities estimated from amplitudes.

²Theoretical values of $\langle |L| \rangle$, $\langle L^2 \rangle$ for acentric reflections are 0.5, 0.333 respectively for untwinned datasets, and 0.375, 0.2 for perfectly twinned datasets.

5 Model quality

5.1 Standard geometry

Bond lengths and bond angles in the following residue types are not validated in this section: COA, MG, FAD, CL

The Z score for a bond length (or angle) is the number of standard deviations the observed value is removed from the expected value. A bond length (or angle) with $|Z| > 5$ is considered an outlier worth inspection. RMSZ is the root-mean-square of all Z scores of the bond lengths (or angles).

Mol	Chain	Bond lengths		Bond angles	
		RMSZ	# Z >5	RMSZ	# Z >5
1	A	0.28	0/3598	0.48	0/4871
1	B	0.27	0/3609	0.48	0/4886
All	All	0.27	0/7207	0.48	0/9757

There are no bond length outliers.

There are no bond angle outliers.

There are no chirality outliers.

There are no planarity outliers.

5.2 Too-close contacts

In the following table, the Non-H and H(model) columns list the number of non-hydrogen atoms and hydrogen atoms in the chain respectively. The H(added) column lists the number of hydrogen atoms added and optimized by MolProbity. The Clashes column lists the number of clashes within the asymmetric unit, whereas Symm-Clashes lists symmetry related clashes.

Mol	Chain	Non-H	H(model)	H(added)	Clashes	Symm-Clashes
1	A	3496	0	3450	30	0
1	B	3503	0	3462	43	0
2	A	1	0	0	0	0
2	B	2	0	0	0	0
3	A	4	0	0	1	0
3	B	2	0	0	0	0
4	A	48	0	31	1	0
4	B	79	0	26	1	0
5	A	53	0	30	1	0
5	B	53	0	30	2	0
6	A	668	0	0	6	0

Continued on next page...

Continued from previous page...

Mol	Chain	Non-H	H(model)	H(added)	Clashes	Symm-Clashes
6	B	600	0	0	7	0
All	All	8509	0	7029	70	0

The all-atom clashscore is defined as the number of clashes found per 1000 atoms (including hydrogen atoms). The all-atom clashscore for this structure is 5.

All (70) close contacts within the same asymmetric unit are listed below, sorted by their clash magnitude.

Atom-1	Atom-2	Interatomic distance (Å)	Clash overlap (Å)
1:B:30[A]:ILE:HD11	1:B:104:GLU:HG2	1.65	0.77
1:A:129:THR:HG22	1:A:235[A]:GLU:HG3	1.67	0.77
1:B:356:GLY:O	1:B:425[B]:HIS:HE1	1.74	0.71
1:A:2:PRO:N	1:A:27:SER:HG	1.94	0.66
1:B:42:ASN:H	1:B:42:ASN:ND2	1.95	0.65
1:B:65[A]:GLU:HG3	6:B:2156:HOH:O	1.99	0.62
1:B:355:GLN:HG3	6:B:2367:HOH:O	1.99	0.62
1:A:118:ASN:OD1	1:A:240:HIS:HD2	1.83	0.62
1:A:424:SER:O	1:A:425[B]:HIS:HD2	1.83	0.61
1:B:424:SER:O	1:B:425[A]:HIS:HD2	1.84	0.61
1:B:159:VAL:HG22	6:B:2176:HOH:O	2.00	0.61
1:B:42:ASN:H	1:B:42:ASN:HD22	1.48	0.59
1:A:240:HIS:HE1	6:A:854:HOH:O	1.85	0.59
1:B:312:ASN:C	1:B:312:ASN:HD22	2.06	0.59
1:B:30[A]:ILE:CD1	1:B:104:GLU:HG2	2.31	0.58
1:B:97:LYS:HG3	6:B:2385:HOH:O	2.05	0.56
1:B:159:VAL:HG23	1:B:160:SER:N	2.22	0.55
1:A:43:CYS:SG	5:A:507:FAD:C4X	2.95	0.55
1:B:147:GLN:HG3	6:B:2699:HOH:O	2.05	0.55
1:B:43:CYS:SG	5:B:2006:FAD:C4X	2.96	0.54
6:A:831:HOH:O	1:B:404:MET:HG3	2.08	0.53
1:B:312:ASN:ND2	1:B:314:THR:H	2.07	0.53
1:A:129:THR:CG2	1:A:235[A]:GLU:HG3	2.37	0.52
1:A:4[A]:ILE:HD13	1:A:20:ILE:HD13	1.92	0.51
1:B:159:VAL:HG23	1:B:160:SER:H	1.75	0.51
1:A:312:ASN:C	1:A:312:ASN:HD22	2.14	0.51
1:A:362:TYR:OH	1:B:327:LYS:HE2	2.10	0.50
1:B:341:ASN:ND2	1:B:342:GLU:HG3	2.26	0.50
1:B:164:LEU:CD1	1:B:176:LEU:HB2	2.43	0.48
1:B:312:ASN:HD22	1:B:314:THR:H	1.61	0.48
1:A:355:GLN:HE21	1:A:425[B]:HIS:CE1	2.31	0.48
1:B:339:LYS:HB2	1:B:341:ASN:ND2	2.29	0.47

Continued on next page...

Continued from previous page...

Atom-1	Atom-2	Interatomic distance (Å)	Clash overlap (Å)
1:B:438:LYS:HB2	6:B:2692:HOH:O	2.13	0.47
1:B:246:ILE:HD13	1:B:259:ILE:HD11	1.96	0.47
1:B:63:THR:H	1:B:66:LYS:HE3	1.80	0.46
1:A:355:GLN:NE2	1:A:425[B]:HIS:ND1	2.64	0.45
1:A:327:LYS:HB2	1:B:423:TYR:OH	2.17	0.45
1:A:355:GLN:HG3	6:A:731:HOH:O	2.16	0.45
1:A:52:VAL:HG13	1:B:363:PRO:HG2	1.99	0.44
1:A:55:ASP:O	1:A:58:TYR:HB2	2.17	0.44
1:A:362:TYR:HA	1:A:363:PRO:HD3	1.88	0.43
1:A:252:LYS:HD3	1:A:252:LYS:C	2.39	0.43
1:A:423:TYR:OH	1:B:327:LYS:HB2	2.19	0.43
1:A:244:LYS:HG2	6:A:1180:HOH:O	2.19	0.43
1:B:425[B]:HIS:HD2	6:B:2426:HOH:O	2.00	0.43
1:A:252:LYS:HZ3	1:A:254:ASP:HA	1.84	0.42
1:A:406:GLN:HG3	6:A:922:HOH:O	2.18	0.42
1:A:150:LYS:HE2	1:A:150:LYS:HB3	1.81	0.42
1:B:253:LEU:HD23	1:B:259:ILE:HG12	2.01	0.42
1:A:252:LYS:NZ	1:A:254:ASP:HA	2.35	0.42
1:A:244:LYS:HD2	1:A:247:GLU:OE2	2.19	0.42
3:A:503:CL:CL	4:A:506:COA:H21	2.57	0.41
1:A:155:GLY:HA2	1:A:178:HIS:HD2	1.85	0.41
1:B:151:VAL:O	1:B:174:PRO:HA	2.20	0.41
1:A:344:LYS:HD3	6:A:1053:HOH:O	2.20	0.41
1:B:123:GLU:O	1:B:123:GLU:HG3	2.20	0.41
1:B:355:GLN:OE1	1:B:425[A]:HIS:ND1	2.53	0.41
1:B:407:LEU:HG	1:B:411:GLU:HB2	2.03	0.41
1:B:164:LEU:C	1:B:164:LEU:HD23	2.41	0.41
1:B:436:LYS:O	1:B:437:ALA:O	2.38	0.41
1:B:358:HIS:HB2	1:B:421:PRO:O	2.20	0.41
1:A:424:SER:O	1:A:425[B]:HIS:CD2	2.69	0.41
1:B:43:CYS:SG	5:B:2006:FAD:C10	3.09	0.40
1:A:361:TYR:CZ	1:B:44:ALA:HB2	2.56	0.40
1:B:167:LEU:HD11	1:B:234[A]:ILE:HD12	2.02	0.40

There are no symmetry-related clashes.

5.3 Torsion angles [i](#)

5.3.1 Protein backbone [i](#)

In the following table, the Percentiles column shows the percent Ramachandran outliers of the chain as a percentile score with respect to all X-ray entries followed by that with respect to entries of similar resolution.

The Analysed column shows the number of residues for which the backbone conformation was analysed, and the total number of residues.

Mol	Chain	Analysed	Favoured	Allowed	Outliers	Percentiles	
1	A	443/437 (101%)	430 (97%)	12 (3%)	1 (0%)	47	23
1	B	444/437 (102%)	434 (98%)	8 (2%)	2 (0%)	29	9
All	All	887/874 (102%)	864 (97%)	20 (2%)	3 (0%)	41	18

All (3) Ramachandran outliers are listed below:

Mol	Chain	Res	Type
1	B	437	ALA
1	A	10	VAL
1	B	10	VAL

5.3.2 Protein sidechains [i](#)

In the following table, the Percentiles column shows the percent sidechain outliers of the chain as a percentile score with respect to all X-ray entries followed by that with respect to entries of similar resolution.

The Analysed column shows the number of residues for which the sidechain conformation was analysed, and the total number of residues.

Mol	Chain	Analysed	Rotameric	Outliers	Percentiles	
1	A	384/376 (102%)	380 (99%)	4 (1%)	76	57
1	B	385/376 (102%)	381 (99%)	4 (1%)	76	57
All	All	769/752 (102%)	761 (99%)	8 (1%)	73	57

All (8) residues with a non-rotameric sidechain are listed below:

Mol	Chain	Res	Type
1	A	42	ASN
1	A	181	ASP
1	A	312	ASN

Continued on next page...

Continued from previous page...

Mol	Chain	Res	Type
1	A	341	ASN
1	B	42	ASN
1	B	99	ASN
1	B	312	ASN
1	B	341	ASN

Some sidechains can be flipped to improve hydrogen bonding and reduce clashes. All (11) such sidechains are listed below:

Mol	Chain	Res	Type
1	A	178	HIS
1	A	240	HIS
1	A	312	ASN
1	A	355	GLN
1	B	42	ASN
1	B	89	GLN
1	B	99	ASN
1	B	216	ASN
1	B	242	ASN
1	B	312	ASN
1	B	341	ASN

5.3.3 RNA [i](#)

There are no RNA molecules in this entry.

5.4 Non-standard residues in protein, DNA, RNA chains [i](#)

There are no non-standard protein/DNA/RNA residues in this entry.

5.5 Carbohydrates [i](#)

There are no carbohydrates in this entry.

5.6 Ligand geometry [i](#)

Of 14 ligands modelled in this entry, 9 are monoatomic - leaving 5 for Mogul analysis.

In the following table, the Counts columns list the number of bonds (or angles) for which Mogul statistics could be retrieved, the number of bonds (or angles) that are observed in the model and

the number of bonds (or angles) that are defined in the Chemical Component Dictionary. The Link column lists molecule types, if any, to which the group is linked. The Z score for a bond length (or angle) is the number of standard deviations the observed value is removed from the expected value. A bond length (or angle) with $|Z| > 2$ is considered an outlier worth inspection. RMSZ is the root-mean-square of all Z scores of the bond lengths (or angles).

Mol	Type	Chain	Res	Link	Bond lengths			Bond angles		
					Counts	RMSZ	# Z > 2	Counts	RMSZ	# Z > 2
5	FAD	B	2006	-	51,58,58	3.00	20 (39%)	60,89,89	2.03	8 (13%)
4	COA	B	2005[A]	-	41,50,50	2.98	21 (51%)	52,75,75	1.44	7 (13%)
4	COA	B	2005[B]	-	41,50,50	2.98	21 (51%)	52,75,75	1.43	5 (9%)
4	COA	A	506	1	41,50,50	2.87	20 (48%)	52,75,75	1.31	4 (7%)
5	FAD	A	507	-	51,58,58	2.91	21 (41%)	60,89,89	2.02	11 (18%)

In the following table, the Chirals column lists the number of chiral outliers, the number of chiral centers analysed, the number of these observed in the model and the number defined in the Chemical Component Dictionary. Similar counts are reported in the Torsion and Rings columns. '-' means no outliers of that kind were identified.

Mol	Type	Chain	Res	Link	Chirals	Torsions	Rings
5	FAD	B	2006	-	-	3/30/50/50	0/6/6/6
4	COA	B	2005[A]	-	-	9/44/64/64	0/3/3/3
4	COA	B	2005[B]	-	-	12/44/64/64	0/3/3/3
4	COA	A	506	1	-	6/44/64/64	0/3/3/3
5	FAD	A	507	-	-	2/30/50/50	0/6/6/6

All (103) bond length outliers are listed below:

Mol	Chain	Res	Type	Atoms	Z	Observed(Å)	Ideal(Å)
5	B	2006	FAD	O2'-C2'	-11.61	1.18	1.43
5	A	507	FAD	O2'-C2'	-11.20	1.19	1.43
4	B	2005[A]	COA	C2A-N3A	7.99	1.45	1.32
4	B	2005[B]	COA	C2A-N3A	7.96	1.44	1.32
4	A	506	COA	C2A-N3A	7.66	1.44	1.32
4	A	506	COA	C9P-N8P	6.45	1.47	1.33
4	B	2005[A]	COA	C9P-N8P	6.35	1.47	1.33
4	B	2005[B]	COA	C9P-N8P	6.35	1.47	1.33
5	B	2006	FAD	O4-C4	5.70	1.38	1.24
4	B	2005[A]	COA	C5P-N4P	5.67	1.46	1.33
4	B	2005[B]	COA	C5P-N4P	5.67	1.46	1.33
5	B	2006	FAD	C4X-N5	5.63	1.41	1.33
5	A	507	FAD	O4-C4	5.57	1.38	1.24

Continued on next page...

Continued from previous page...

Mol	Chain	Res	Type	Atoms	Z	Observed(Å)	Ideal(Å)
5	A	507	FAD	C4X-N5	5.51	1.41	1.33
5	B	2006	FAD	C2A-N3A	5.29	1.40	1.32
4	A	506	COA	C5P-N4P	5.21	1.45	1.33
5	A	507	FAD	C2A-N3A	5.10	1.40	1.32
4	B	2005[B]	COA	P3B-O7A	4.84	1.66	1.50
4	A	506	COA	P3B-O7A	4.80	1.66	1.50
4	B	2005[A]	COA	P3B-O7A	4.80	1.66	1.50
4	B	2005[A]	COA	C2A-N1A	4.63	1.42	1.33
4	B	2005[B]	COA	C2A-N1A	4.63	1.42	1.33
4	B	2005[A]	COA	O4B-C1B	4.57	1.47	1.41
5	B	2006	FAD	C5X-N5	4.51	1.42	1.35
4	A	506	COA	C2A-N1A	4.39	1.42	1.33
5	B	2006	FAD	PA-O1A	4.34	1.66	1.50
5	B	2006	FAD	C10-N1	4.33	1.38	1.33
4	B	2005[B]	COA	O4B-C1B	4.19	1.46	1.41
4	B	2005[B]	COA	P2A-O4A	4.13	1.65	1.50
5	A	507	FAD	C5X-N5	4.11	1.42	1.35
4	B	2005[A]	COA	C4A-N3A	4.11	1.41	1.35
4	B	2005[B]	COA	C4A-N3A	4.10	1.41	1.35
4	B	2005[B]	COA	P1A-O1A	4.09	1.65	1.50
5	B	2006	FAD	C6-C5X	4.06	1.48	1.41
4	A	506	COA	O4B-C1B	4.04	1.46	1.41
4	B	2005[A]	COA	P2A-O4A	4.03	1.65	1.50
5	A	507	FAD	C10-N1	4.03	1.38	1.33
4	B	2005[A]	COA	P1A-O1A	4.00	1.65	1.50
5	A	507	FAD	C8A-N7A	3.99	1.41	1.34
4	B	2005[B]	COA	P3B-O3B	3.98	1.66	1.59
5	A	507	FAD	C6-C5X	3.93	1.48	1.41
5	B	2006	FAD	C2A-N1A	3.93	1.41	1.33
4	A	506	COA	P1A-O1A	3.90	1.64	1.50
4	A	506	COA	C4A-N3A	3.89	1.41	1.35
4	B	2005[A]	COA	P3B-O3B	3.89	1.66	1.59
5	B	2006	FAD	C9-C9A	3.82	1.48	1.40
4	A	506	COA	P2A-O4A	3.80	1.64	1.50
4	B	2005[B]	COA	C8A-N7A	3.80	1.41	1.34
5	B	2006	FAD	C8A-N7A	3.78	1.41	1.34
5	A	507	FAD	PA-O1A	3.74	1.64	1.50
4	B	2005[A]	COA	C8A-N7A	3.65	1.41	1.34
5	A	507	FAD	C2A-N1A	3.58	1.40	1.33
4	A	506	COA	C8A-N7A	3.51	1.41	1.34
5	B	2006	FAD	P-O1P	3.51	1.63	1.50
4	B	2005[A]	COA	C6A-N6A	3.50	1.46	1.34

Continued on next page...

Continued from previous page...

Mol	Chain	Res	Type	Atoms	Z	Observed(Å)	Ideal(Å)
5	A	507	FAD	P-O1P	3.48	1.63	1.50
4	B	2005[B]	COA	C6A-N6A	3.47	1.46	1.34
4	A	506	COA	P3B-O3B	3.44	1.65	1.59
4	A	506	COA	C6A-N6A	3.40	1.46	1.34
5	A	507	FAD	C9-C9A	3.31	1.47	1.40
5	B	2006	FAD	C6A-N6A	3.12	1.45	1.34
5	A	507	FAD	C6A-N6A	3.09	1.45	1.34
5	B	2006	FAD	C9-C8	2.99	1.45	1.37
5	B	2006	FAD	C8-C7	2.91	1.48	1.40
5	A	507	FAD	C9-C8	2.89	1.45	1.37
5	A	507	FAD	O4B-C1B	2.87	1.45	1.41
5	B	2006	FAD	C6-C7	2.84	1.45	1.37
5	B	2006	FAD	O4B-C1B	2.83	1.45	1.41
4	B	2005[B]	COA	P3B-O8A	2.83	1.65	1.54
4	B	2005[B]	COA	O4B-C4B	2.81	1.51	1.45
4	A	506	COA	P3B-O8A	2.80	1.65	1.54
4	B	2005[A]	COA	O4B-C4B	2.79	1.51	1.45
5	A	507	FAD	C8-C7	2.79	1.47	1.40
4	B	2005[A]	COA	P3B-O8A	2.78	1.65	1.54
5	A	507	FAD	C2B-C1B	-2.77	1.49	1.53
5	A	507	FAD	C6-C7	2.64	1.44	1.37
5	A	507	FAD	C2-N3	2.61	1.43	1.38
4	A	506	COA	O4B-C4B	2.59	1.50	1.45
5	B	2006	FAD	C2B-C1B	-2.54	1.49	1.53
4	A	506	COA	C2B-C1B	-2.46	1.50	1.53
5	B	2006	FAD	C2-N3	2.38	1.42	1.38
5	A	507	FAD	C1'-N10	-2.38	1.45	1.48
5	B	2006	FAD	C3B-C4B	2.28	1.58	1.53
4	B	2005[A]	COA	O5P-C5P	-2.28	1.18	1.23
4	B	2005[B]	COA	O5P-C5P	-2.28	1.18	1.23
4	B	2005[A]	COA	P1A-O5B	2.26	1.68	1.59
4	B	2005[A]	COA	P2A-O6A	2.21	1.68	1.59
4	A	506	COA	P3B-O9A	-2.18	1.46	1.54
4	B	2005[A]	COA	O9P-C9P	-2.15	1.19	1.23
4	B	2005[B]	COA	O9P-C9P	-2.15	1.19	1.23
4	B	2005[A]	COA	P3B-O9A	-2.14	1.46	1.54
5	A	507	FAD	C3B-C4B	2.14	1.58	1.53
4	B	2005[A]	COA	C2B-C1B	-2.12	1.50	1.53
4	B	2005[B]	COA	P1A-O5B	2.10	1.67	1.59
4	A	506	COA	O5P-C5P	-2.09	1.19	1.23
4	B	2005[B]	COA	P2A-O6A	2.09	1.67	1.59
4	B	2005[B]	COA	P3B-O9A	-2.09	1.46	1.54

Continued on next page...

Continued from previous page...

Mol	Chain	Res	Type	Atoms	Z	Observed(Å)	Ideal(Å)
4	A	506	COA	P1A-O5B	2.07	1.67	1.59
4	B	2005[B]	COA	P1A-O2A	-2.05	1.45	1.55
4	A	506	COA	P1A-O2A	-2.05	1.45	1.55
4	B	2005[B]	COA	C2B-C1B	-2.05	1.50	1.53
4	B	2005[A]	COA	P1A-O2A	-2.05	1.45	1.55
4	A	506	COA	C6P-C5P	2.01	1.55	1.51

All (35) bond angle outliers are listed below:

Mol	Chain	Res	Type	Atoms	Z	Observed(°)	Ideal(°)
5	B	2006	FAD	C1'-N10-C9A	7.65	124.31	118.29
5	A	507	FAD	C1'-N10-C9A	7.46	124.17	118.29
5	B	2006	FAD	C4-N3-C2	6.77	120.86	115.14
5	A	507	FAD	C4-N3-C2	5.96	120.18	115.14
5	A	507	FAD	N3A-C2A-N1A	-5.74	119.70	128.68
4	B	2005[B]	COA	N3A-C2A-N1A	-5.54	120.02	128.68
4	B	2005[A]	COA	N3A-C2A-N1A	-5.40	120.23	128.68
4	A	506	COA	N3A-C2A-N1A	-5.36	120.30	128.68
5	B	2006	FAD	N3A-C2A-N1A	-5.09	120.72	128.68
5	B	2006	FAD	O2'-C2'-C3'	4.68	120.48	109.10
5	A	507	FAD	O2'-C2'-C3'	4.65	120.40	109.10
4	B	2005[B]	COA	P2A-O3A-P1A	-3.98	119.16	132.83
4	B	2005[A]	COA	O6A-CCP-CBP	3.93	116.87	110.55
5	B	2006	FAD	O2'-C2'-C1'	3.84	118.85	109.59
5	A	507	FAD	O2'-C2'-C1'	3.64	118.36	109.59
5	A	507	FAD	C1'-N10-C10	-3.54	115.24	118.41
4	B	2005[B]	COA	O6A-CCP-CBP	3.36	115.94	110.55
5	B	2006	FAD	C1'-N10-C10	-3.30	115.45	118.41
4	A	506	COA	C3P-N4P-C5P	-3.10	117.08	122.84
5	B	2006	FAD	C4X-C4-N3	-3.08	119.22	123.43
5	B	2006	FAD	P-O3P-PA	-3.07	122.29	132.83
5	A	507	FAD	C4X-C4-N3	-3.02	119.30	123.43
4	B	2005[A]	COA	P2A-O3A-P1A	-2.99	122.57	132.83
4	A	506	COA	O5P-C5P-N4P	-2.87	117.61	123.01
4	B	2005[A]	COA	O5B-C5B-C4B	2.47	117.50	108.99
4	B	2005[B]	COA	O3B-C3B-C2B	2.33	120.12	111.68
4	B	2005[A]	COA	C7P-N8P-C9P	-2.32	118.44	122.59
4	B	2005[B]	COA	C7P-N8P-C9P	-2.32	118.44	122.59
5	A	507	FAD	C5X-C9A-N10	2.27	119.36	117.72
4	B	2005[A]	COA	O2B-C2B-C3B	2.23	117.49	111.17
5	A	507	FAD	C7-C6-C5X	-2.20	118.10	121.22
5	A	507	FAD	O3'-C3'-C2'	2.18	114.07	108.81

Continued on next page...

Continued from previous page...

Mol	Chain	Res	Type	Atoms	Z	Observed(°)	Ideal(°)
5	A	507	FAD	P-O3P-PA	-2.10	125.61	132.83
4	B	2005[A]	COA	O4B-C4B-C5B	2.06	116.16	109.37
4	A	506	COA	O2B-C2B-C3B	2.04	116.95	111.17

There are no chirality outliers.

All (32) torsion outliers are listed below:

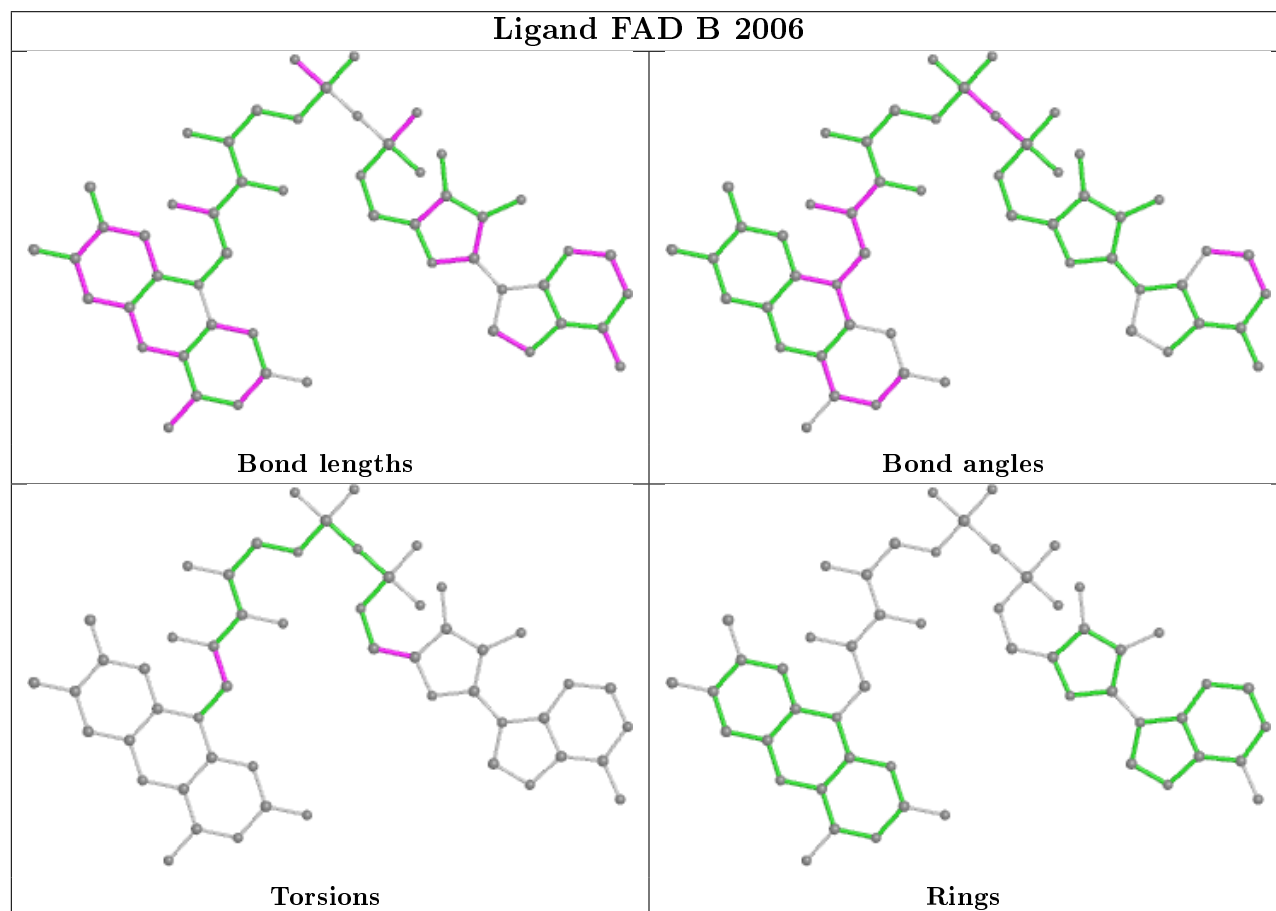
Mol	Chain	Res	Type	Atoms
4	B	2005[A]	COA	CCP-O6A-P2A-O3A
4	B	2005[A]	COA	CCP-O6A-P2A-O5A
4	B	2005[A]	COA	CDP-CBP-CCP-O6A
4	B	2005[A]	COA	CEP-CBP-CCP-O6A
4	B	2005[A]	COA	CAP-CBP-CCP-O6A
4	A	506	COA	CCP-O6A-P2A-O4A
4	A	506	COA	C5P-C6P-C7P-N8P
5	A	507	FAD	O4B-C4B-C5B-O5B
4	B	2005[B]	COA	C2B-C3B-O3B-P3B
4	B	2005[B]	COA	C5B-O5B-P1A-O1A
4	B	2005[B]	COA	C5B-O5B-P1A-O3A
4	B	2005[B]	COA	P1A-O3A-P2A-O6A
4	B	2005[B]	COA	CBP-CCP-O6A-P2A
5	B	2006	FAD	O4B-C4B-C5B-O5B
5	A	507	FAD	C3B-C4B-C5B-O5B
4	A	506	COA	P1A-O3A-P2A-O6A
4	A	506	COA	CCP-O6A-P2A-O3A
4	B	2005[B]	COA	C3B-O3B-P3B-O8A
4	B	2005[A]	COA	P2A-O3A-P1A-O2A
4	B	2005[A]	COA	CCP-O6A-P2A-O4A
4	B	2005[B]	COA	C5B-O5B-P1A-O2A
5	B	2006	FAD	N10-C1'-C2'-O2'
4	A	506	COA	C6P-C5P-N4P-C3P
4	B	2005[A]	COA	O5P-C5P-N4P-C3P
4	B	2005[B]	COA	O5P-C5P-N4P-C3P
4	B	2005[B]	COA	P2A-O3A-P1A-O2A
4	B	2005[B]	COA	CEP-CBP-CCP-O6A
4	A	506	COA	S1P-C2P-C3P-N4P
5	B	2006	FAD	C3B-C4B-C5B-O5B
4	B	2005[A]	COA	C3B-O3B-P3B-O7A
4	B	2005[B]	COA	P2A-O3A-P1A-O1A
4	B	2005[B]	COA	CDP-CBP-CCP-O6A

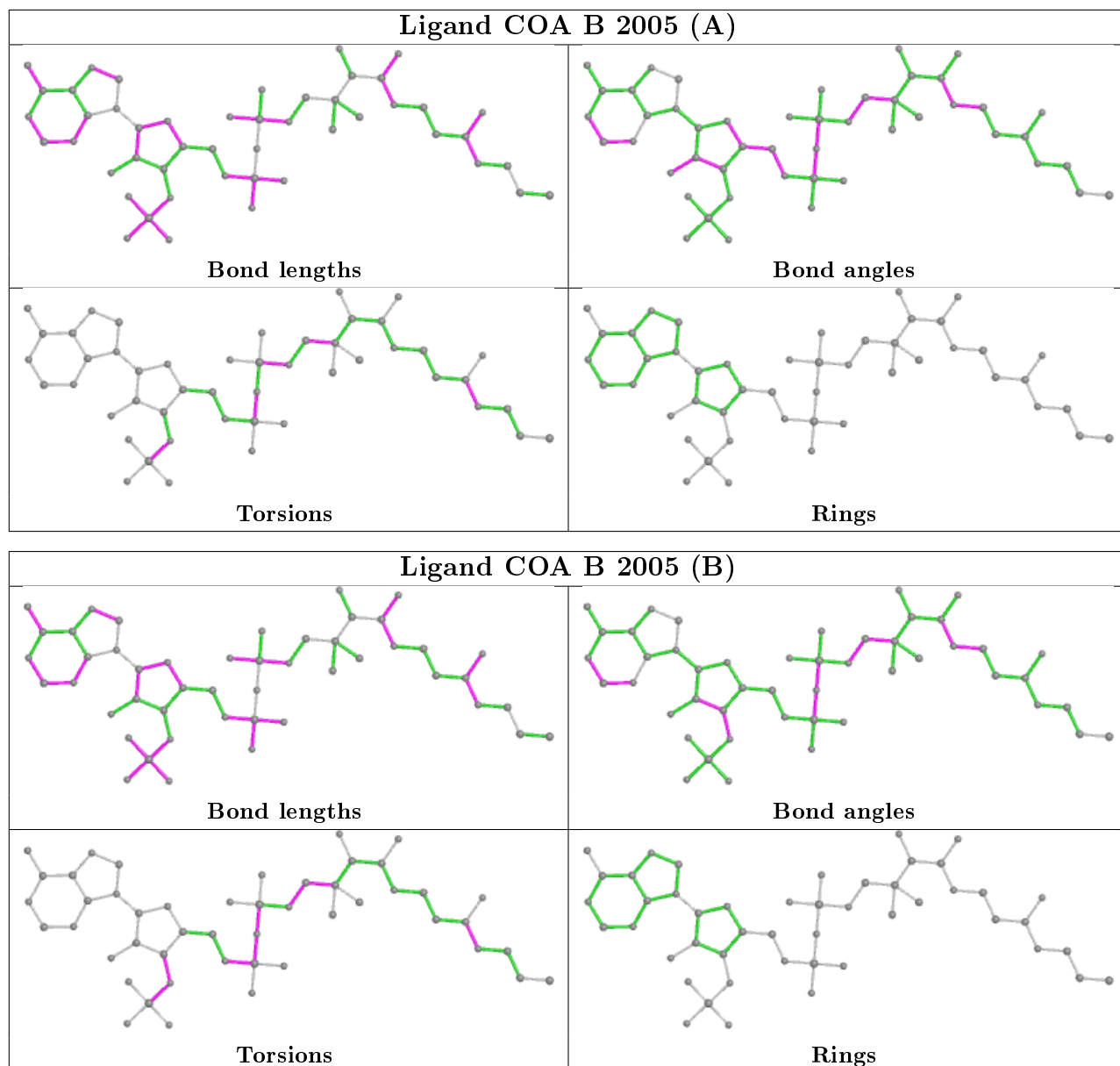
There are no ring outliers.

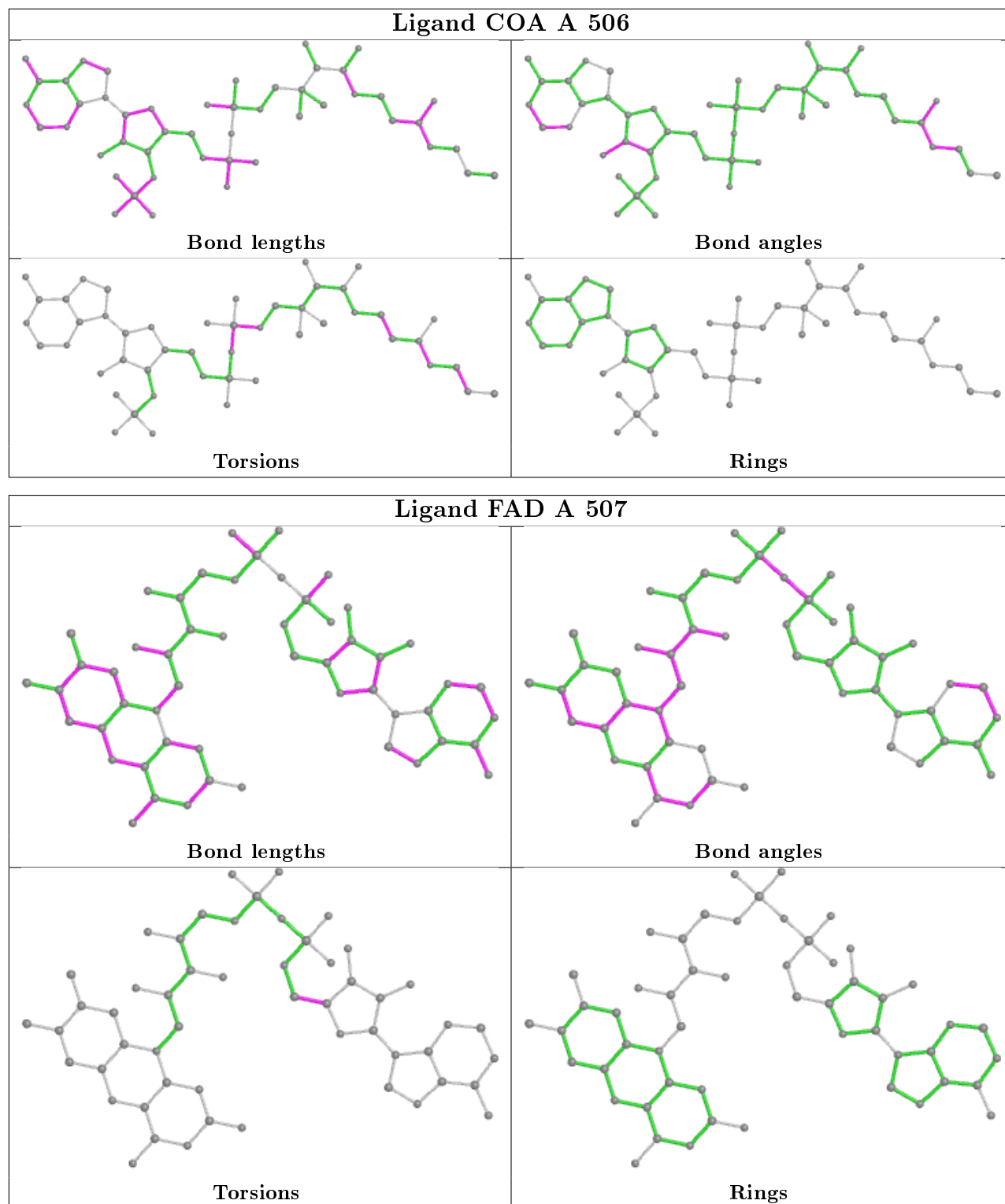
4 monomers are involved in 5 short contacts:

Mol	Chain	Res	Type	Clashes	Symm-Clashes
5	B	2006	FAD	2	0
4	B	2005[B]	COA	1	0
4	A	506	COA	1	0
5	A	507	FAD	1	0

The following is a two-dimensional graphical depiction of Mogul quality analysis of bond lengths, bond angles, torsion angles, and ring geometry for all instances of the Ligand of Interest. In addition, ligands with molecular weight > 250 and outliers as shown on the validation Tables will also be included. For torsion angles, if less than 5% of the Mogul distribution of torsion angles is within 10 degrees of the torsion angle in question, then that torsion angle is considered an outlier. Any bond that is central to one or more torsion angles identified as an outlier by Mogul will be highlighted in the graph. For rings, the root-mean-square deviation (RMSD) between the ring in question and similar rings identified by Mogul is calculated over all ring torsion angles. If the average RMSD is greater than 60 degrees and the minimal RMSD between the ring in question and any Mogul-identified rings is also greater than 60 degrees, then that ring is considered an outlier. The outliers are highlighted in purple. The color gray indicates Mogul did not find sufficient equivalents in the CSD to analyse the geometry.







5.7 Other polymers ⓘ

There are no such residues in this entry.

5.8 Polymer linkage issues

There are no chain breaks in this entry.

6 Fit of model and data [i](#)

6.1 Protein, DNA and RNA chains [i](#)

In the following table, the column labelled ‘#RSRZ> 2’ contains the number (and percentage) of RSRZ outliers, followed by percent RSRZ outliers for the chain as percentile scores relative to all X-ray entries and entries of similar resolution. The OWAB column contains the minimum, median, 95th percentile and maximum values of the occupancy-weighted average B-factor per residue. The column labelled ‘Q< 0.9’ lists the number of (and percentage) of residues with an average occupancy less than 0.9.

Mol	Chain	Analysed	<RSRZ>	#RSRZ>2	OWAB(Å ²)	Q<0.9
1	A	437/437 (100%)	0.06	7 (1%) 72 77	12, 17, 32, 56	0
1	B	437/437 (100%)	0.05	10 (2%) 60 65	12, 20, 32, 55	0
All	All	874/874 (100%)	0.06	17 (1%) 66 71	12, 19, 32, 56	0

All (17) RSRZ outliers are listed below:

Mol	Chain	Res	Type	RSRZ
1	A	58	TYR	4.9
1	B	123	GLU	4.7
1	A	57	ARG	3.4
1	B	159	VAL	3.3
1	B	360	ASN	3.2
1	B	438	LYS	3.0
1	B	363	PRO	3.0
1	A	54	GLU	2.8
1	B	30[A]	ILE	2.5
1	B	437	ALA	2.4
1	A	291[A]	SER	2.3
1	A	123	GLU	2.2
1	A	55	ASP	2.1
1	B	217	GLY	2.1
1	B	362	TYR	2.1
1	A	141	GLN	2.1
1	B	361	TYR	2.1

6.2 Non-standard residues in protein, DNA, RNA chains [i](#)

There are no non-standard protein/DNA/RNA residues in this entry.

6.3 Carbohydrates [i](#)

There are no carbohydrates in this entry.

6.4 Ligands [i](#)

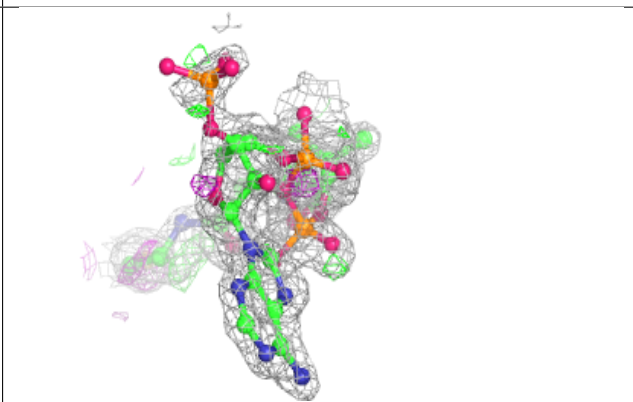
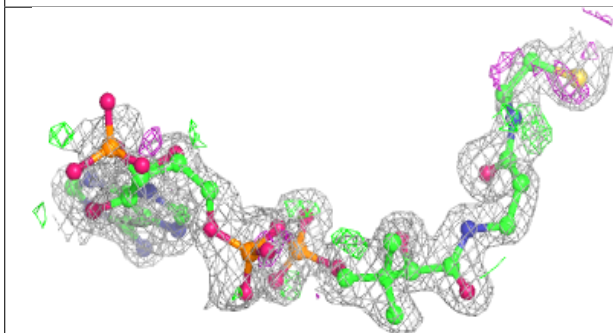
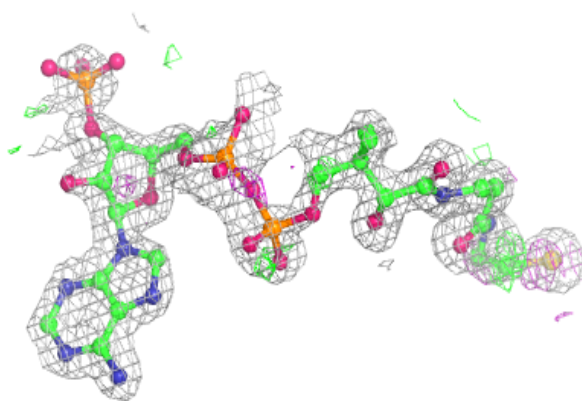
In the following table, the Atoms column lists the number of modelled atoms in the group and the number defined in the chemical component dictionary. The B-factors column lists the minimum, median, 95th percentile and maximum values of B factors of atoms in the group. The column labelled 'Q< 0.9' lists the number of atoms with occupancy less than 0.9.

Mol	Type	Chain	Res	Atoms	RSCC	RSR	B-factors(Å ²)	Q<0.9
3	CL	A	504	1/1	0.79	0.28	60,60,60,60	0
2	MG	B	2002	1/1	0.90	0.08	30,30,30,30	0
4	COA	B	2005[A]	48/48	0.91	0.16	18,30,52,64	31
4	COA	B	2005[B]	48/48	0.91	0.16	18,32,49,55	31
4	COA	A	506	48/48	0.95	0.09	17,22,36,50	0
5	FAD	B	2006	53/53	0.96	0.09	12,15,19,20	0
3	CL	B	2004	1/1	0.96	0.10	31,31,31,31	0
2	MG	B	2001	1/1	0.96	0.06	21,21,21,21	0
2	MG	A	501	1/1	0.97	0.06	35,35,35,35	0
5	FAD	A	507	53/53	0.97	0.08	11,13,15,17	0
3	CL	B	2003	1/1	0.98	0.04	27,27,27,27	0
3	CL	A	503	1/1	0.99	0.10	29,29,29,29	0
3	CL	A	505	1/1	0.99	0.05	23,23,23,23	0
3	CL	A	502	1/1	1.00	0.12	26,26,26,26	0

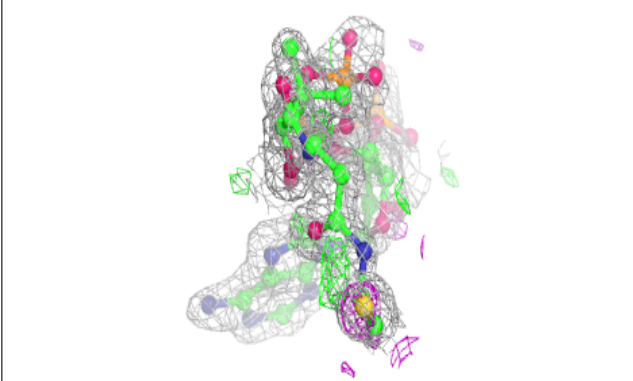
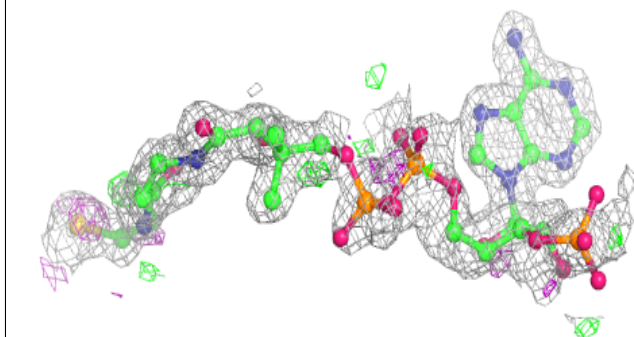
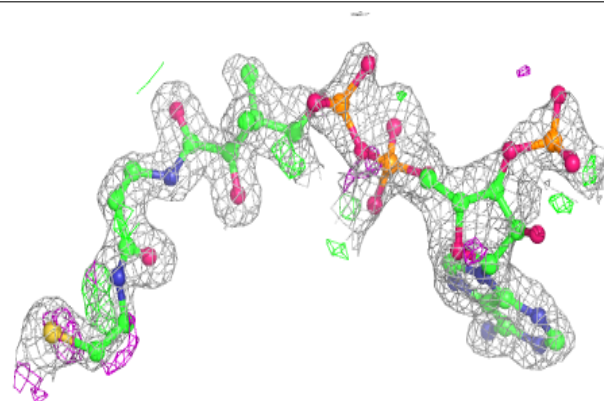
The following is a graphical depiction of the model fit to experimental electron density of all instances of the Ligand of Interest. In addition, ligands with molecular weight > 250 and outliers as shown on the geometry validation Tables will also be included. Each fit is shown from different orientation to approximate a three-dimensional view.

Electron density around COA B 2005 (A):

$2mF_o-DF_c$ (at 0.7 rmsd) in gray
 mF_o-DF_c (at 3 rmsd) in purple (negative)
and green (positive)

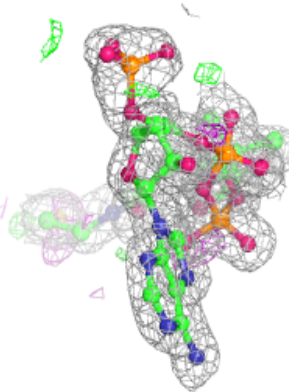
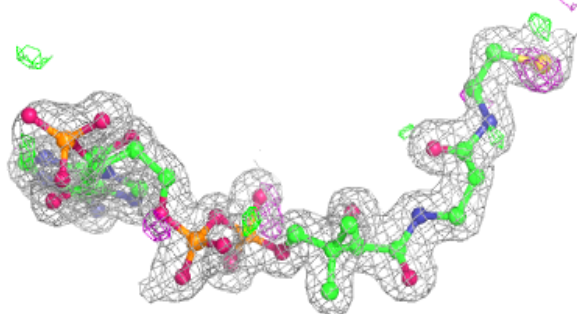
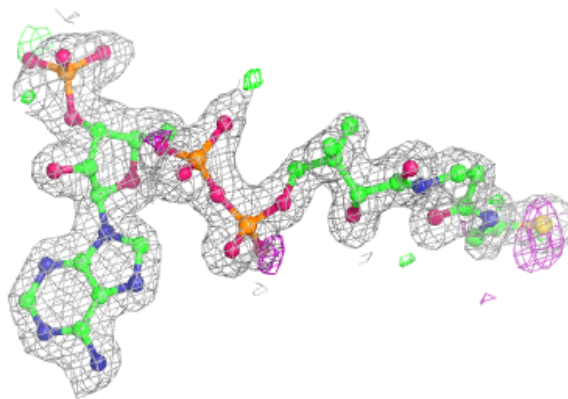
**Electron density around COA B 2005 (B):**

$2mF_o-DF_c$ (at 0.7 rmsd) in gray
 mF_o-DF_c (at 3 rmsd) in purple (negative)
and green (positive)

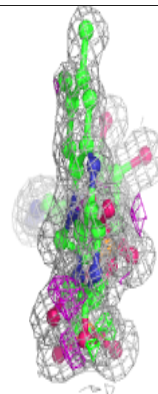
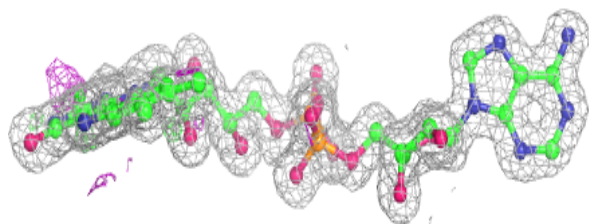
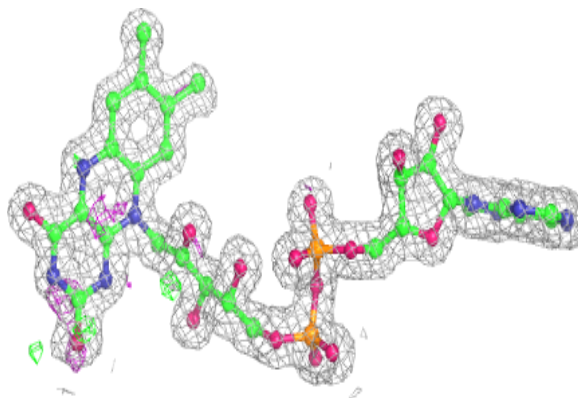


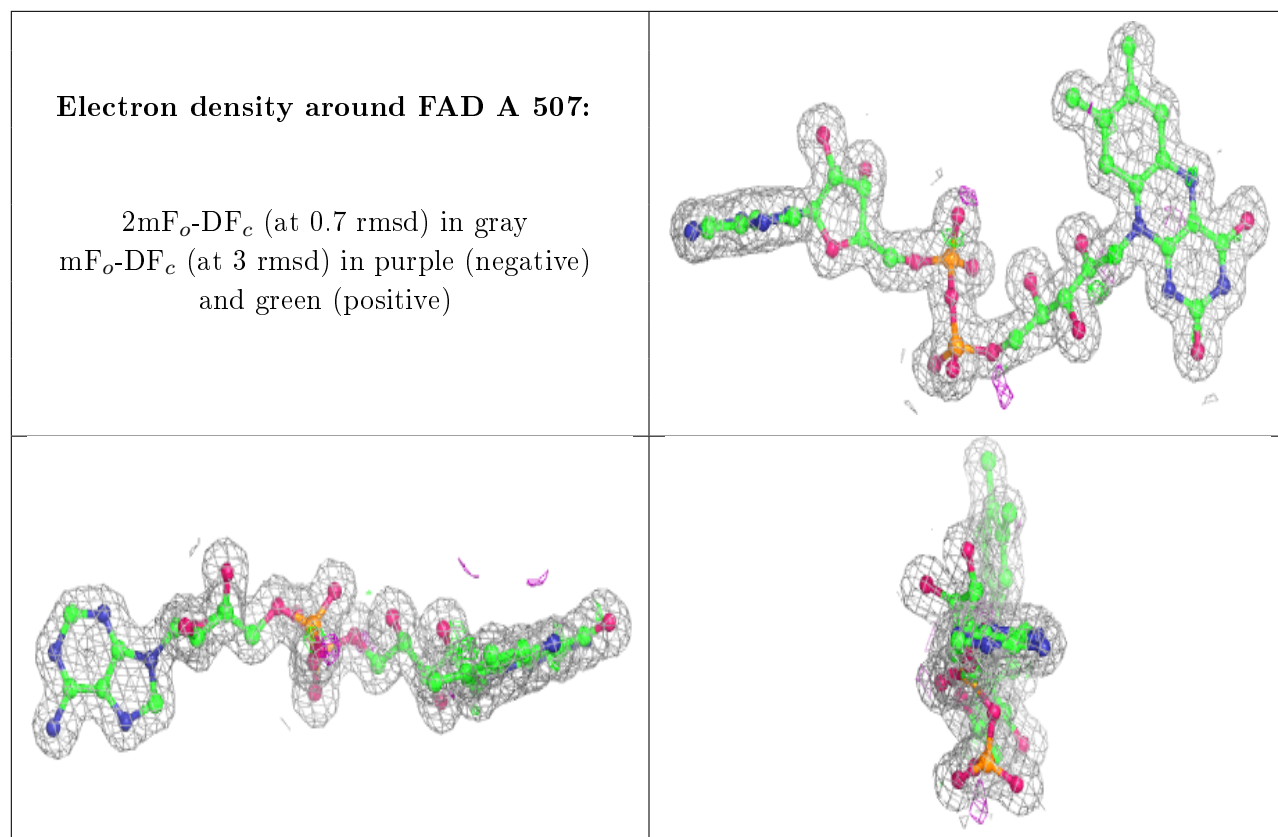
Electron density around COA A 506:

$2mF_o-DF_c$ (at 0.7 rmsd) in gray
 mF_o-DF_c (at 3 rmsd) in purple (negative)
and green (positive)

**Electron density around FAD B 2006:**

$2mF_o-DF_c$ (at 0.7 rmsd) in gray
 mF_o-DF_c (at 3 rmsd) in purple (negative)
and green (positive)





6.5 Other polymers [i](#)

There are no such residues in this entry.