



# Full wwPDB X-ray Structure Validation Report ⓘ

Oct 16, 2023 – 12:26 AM EDT

PDB ID : 8DXB  
Title : HIV-1 reverse transcriptase/rilpivirine with bound fragment 5-fluoroindole-2-carboxylic acid at the NNRTI Adjacent site  
Authors : Chopra, A.; Ruiz, F.X.; Bauman, J.D.; Arnold, E.  
Deposited on : 2022-08-02  
Resolution : 2.10 Å(reported)

This is a Full wwPDB X-ray Structure Validation Report for a publicly released PDB entry.

We welcome your comments at [validation@mail.wwpdb.org](mailto:validation@mail.wwpdb.org)

A user guide is available at

<https://www.wwpdb.org/validation/2017/XrayValidationReportHelp>

with specific help available everywhere you see the ⓘ symbol.

The types of validation reports are described at

<http://www.wwpdb.org/validation/2017/FAQs#types>.

---

The following versions of software and data (see [references ⓘ](#)) were used in the production of this report:

MolProbity : 4.02b-467  
Mogul : 1.8.5 (274361), CSD as541be (2020)  
Xtriage (Phenix) : 1.13  
EDS : 2.36  
buster-report : 1.1.7 (2018)  
Percentile statistics : 20191225.v01 (using entries in the PDB archive December 25th 2019)  
Refmac : 5.8.0158  
CCP4 : 7.0.044 (Gargrove)  
Ideal geometry (proteins) : Engh & Huber (2001)  
Ideal geometry (DNA, RNA) : Parkinson et al. (1996)  
Validation Pipeline (wwPDB-VP) : 2.36

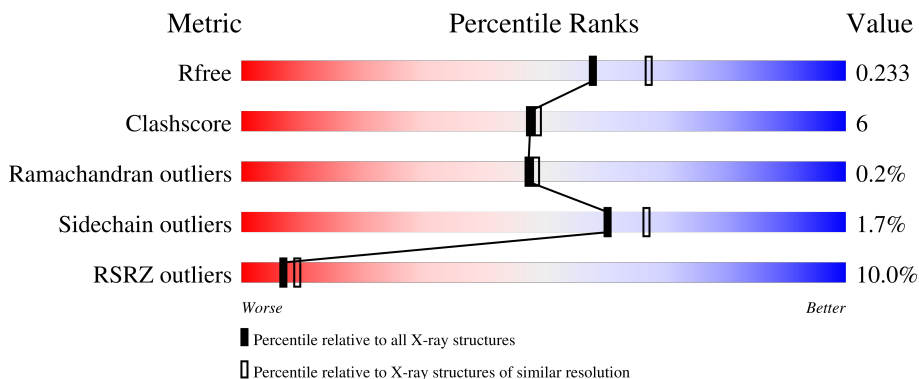
# 1 Overall quality at a glance

The following experimental techniques were used to determine the structure:

*X-RAY DIFFRACTION*

The reported resolution of this entry is 2.10 Å.

Percentile scores (ranging between 0-100) for global validation metrics of the entry are shown in the following graphic. The table shows the number of entries on which the scores are based.



Metric	Whole archive (#Entries)	Similar resolution (#Entries, resolution range(Å))
$R_{free}$	130704	5197 (2.10-2.10)
Clashscore	141614	5710 (2.10-2.10)
Ramachandran outliers	138981	5647 (2.10-2.10)
Sidechain outliers	138945	5648 (2.10-2.10)
RSRZ outliers	127900	5083 (2.10-2.10)

The table below summarises the geometric issues observed across the polymeric chains and their fit to the electron density. The red, orange, yellow and green segments of the lower bar indicate the fraction of residues that contain outliers for  $\geq 3$ , 2, 1 and 0 types of geometric quality criteria respectively. A grey segment represents the fraction of residues that are not modelled. The numeric value for each fraction is indicated below the corresponding segment, with a dot representing fractions  $\leq 5\%$ . The upper red bar (where present) indicates the fraction of residues that have poor fit to the electron density. The numeric value is given above the bar.

Mol	Chain	Length	Quality of chain
1	A	557	 9% 86% 12%
2	B	428	 11% 81% 15%

The following table lists non-polymeric compounds, carbohydrate monomers and non-standard residues in protein, DNA, RNA chains that are outliers for geometric or electron-density-fit criteria:

Mol	Type	Chain	Res	Chirality	Geometry	Clashes	Electron density
5	DMS	B	502	-	-	-	X
6	EDO	A	908	-	-	-	X

## 2 Entry composition [i](#)

There are 8 unique types of molecules in this entry. The entry contains 8305 atoms, of which 0 are hydrogens and 0 are deuteriums.

In the tables below, the ZeroOcc column contains the number of atoms modelled with zero occupancy, the AltConf column contains the number of residues with at least one atom in alternate conformation and the Trace column contains the number of residues modelled with at most 2 atoms.

- Molecule 1 is a protein called Reverse transcriptase/ribonuclease H.

Mol	Chain	Residues	Atoms					ZeroOcc	AltConf	Trace
			Total	C	N	O	S			
1	A	556	4545	2941	757	839	8	0	4	0

There are 5 discrepancies between the modelled and reference sequences:

Chain	Residue	Modelled	Actual	Comment	Reference
A	-1	MET	-	expression tag	UNP P03366
A	0	VAL	-	expression tag	UNP P03366
A	172	ALA	LYS	engineered mutation	UNP P03366
A	173	ALA	LYS	engineered mutation	UNP P03366
A	280	SER	CYS	engineered mutation	UNP P03366

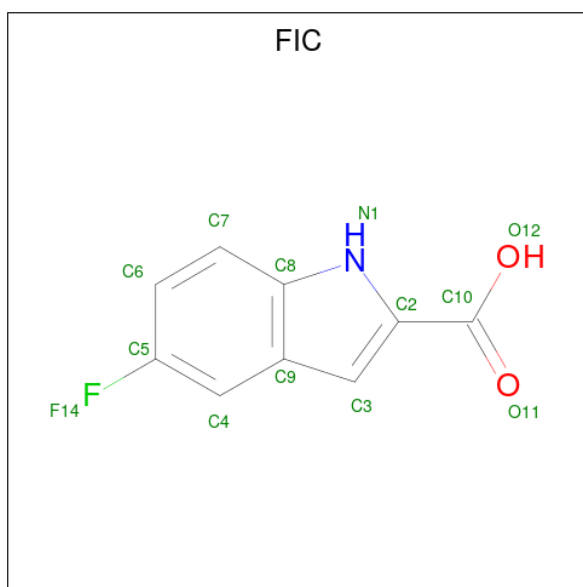
- Molecule 2 is a protein called p51 RT.

Mol	Chain	Residues	Atoms					ZeroOcc	AltConf	Trace
			Total	C	N	O	S			
2	B	415	3466	2264	571	624	7	0	5	0

There is a discrepancy between the modelled and reference sequences:

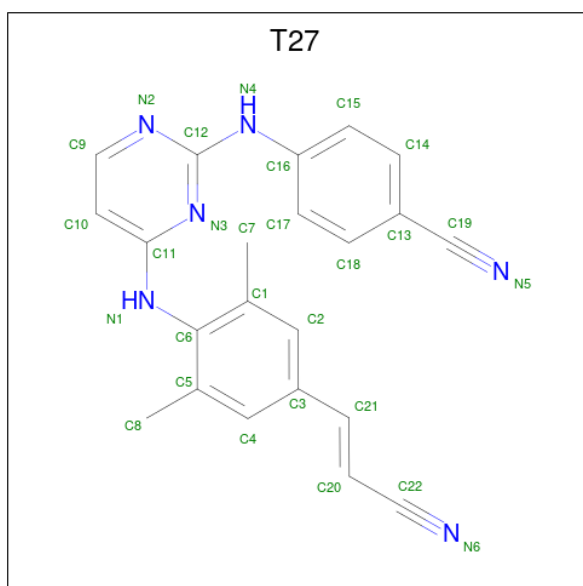
Chain	Residue	Modelled	Actual	Comment	Reference
B	280	SER	CYS	engineered mutation	UNP P03366

- Molecule 3 is 5-fluoroindole-2-carboxylic acid (three-letter code: FIC) (formula: C<sub>9</sub>H<sub>6</sub>FNO<sub>2</sub>) (labeled as "Ligand of Interest" by depositor).



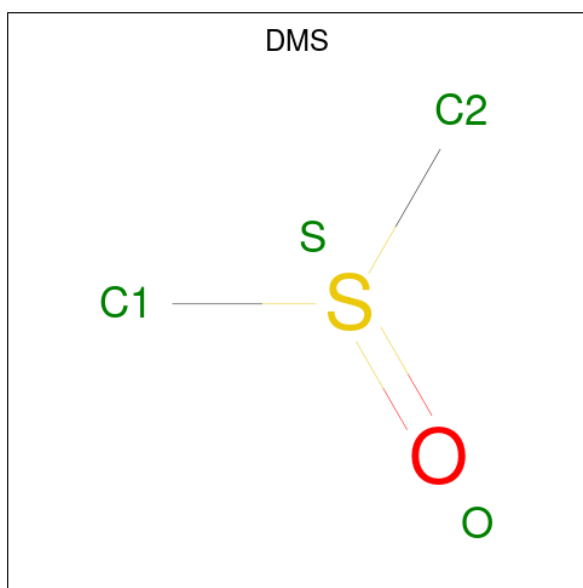
Mol	Chain	Residues	Atoms				ZeroOcc	AltConf	
3	A	1	Total	C	F	N	O	0	0
			13	9	1	1	2		
3	A	1	Total	C	F	N	O	0	1
			13	9	1	1	2		

- Molecule 4 is 4-{{4-{{4-[(E)-2-cyanoethenyl]-2,6-dimethylphenyl}amino)pyrimidin-2-yl]amino}benzotrile (three-letter code: T27) (formula: C<sub>22</sub>H<sub>18</sub>N<sub>6</sub>).



Mol	Chain	Residues	Atoms			ZeroOcc	AltConf
4	A	1	Total	C	N	0	0
			28	22	6		

- Molecule 5 is DIMETHYL SULFOXIDE (three-letter code: DMS) (formula: C<sub>2</sub>H<sub>6</sub>OS).



Mol	Chain	Residues	Atoms				ZeroOcc	AltConf
5	A	1	Total	C	O	S	0	0
			4	2	1	1		
5	A	1	Total	C	O	S	0	0
			4	2	1	1		
5	A	1	Total	C	O	S	0	0
			4	2	1	1		
5	A	1	Total	C	O	S	0	0
			4	2	1	1		
5	B	1	Total	C	O	S	0	0
			4	2	1	1		
5	B	1	Total	C	O	S	0	0
			4	2	1	1		
5	B	1	Total	C	O	S	0	0
			4	2	1	1		
5	B	1	Total	C	O	S	0	0
			4	2	1	1		

- Molecule 6 is 1,2-ETHANEDIOL (three-letter code: EDO) (formula: C<sub>2</sub>H<sub>6</sub>O<sub>2</sub>).



Mol	Chain	Residues	Atoms	ZeroOcc	AltConf
6	A	1	Total C O 4 2 2	0	0
6	A	1	Total C O 4 2 2	0	0
6	B	1	Total C O 4 2 2	0	0

- Molecule 7 is MAGNESIUM ION (three-letter code: MG) (formula: Mg).

Mol	Chain	Residues	Atoms	ZeroOcc	AltConf
7	A	1	Total Mg 1 1	0	0

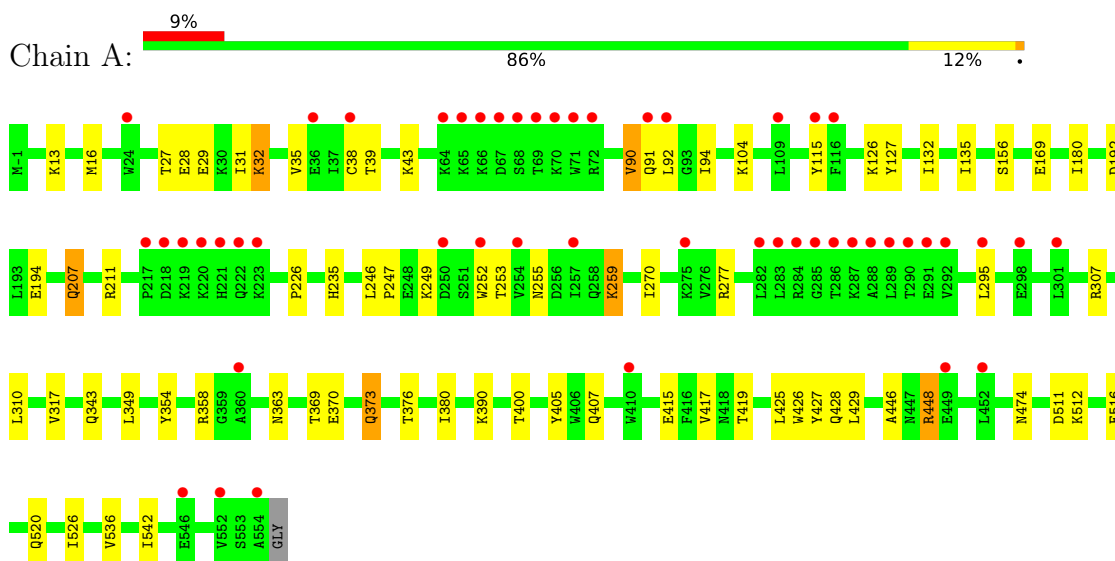
- Molecule 8 is water.

Mol	Chain	Residues	Atoms	ZeroOcc	AltConf
8	A	131	Total O 131 131	0	0
8	B	60	Total O 60 60	0	0

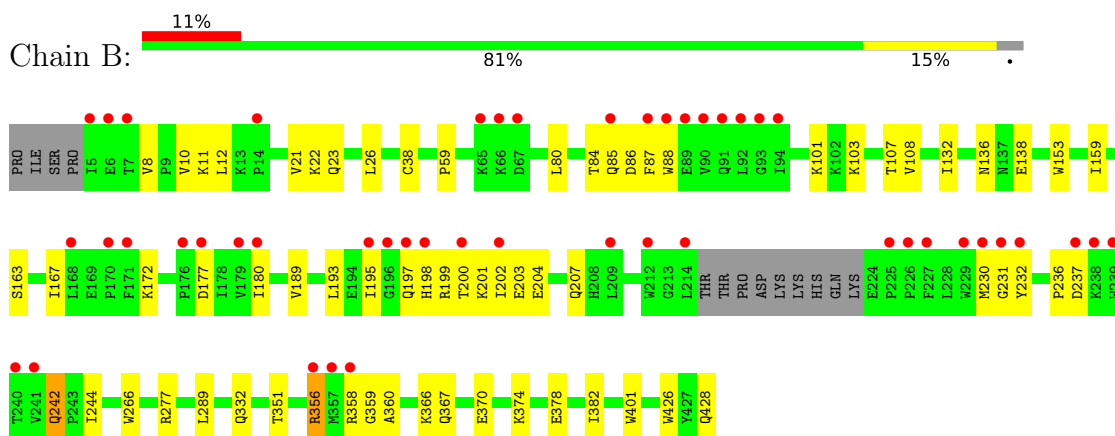
### 3 Residue-property plots [i](#)

These plots are drawn for all protein, RNA, DNA and oligosaccharide chains in the entry. The first graphic for a chain summarises the proportions of the various outlier classes displayed in the second graphic. The second graphic shows the sequence view annotated by issues in geometry and electron density. Residues are color-coded according to the number of geometric quality criteria for which they contain at least one outlier: green = 0, yellow = 1, orange = 2 and red = 3 or more. A red dot above a residue indicates a poor fit to the electron density ( $RSRZ > 2$ ). Stretches of 2 or more consecutive residues without any outlier are shown as a green connector. Residues present in the sample, but not in the model, are shown in grey.

- Molecule 1: Reverse transcriptase/ribonuclease H



- Molecule 2: p51 RT





## 4 Data and refinement statistics

Property	Value	Source
Space group	C 1 2 1	Depositor
Cell constants a, b, c, $\alpha$ , $\beta$ , $\gamma$	162.62Å 73.13Å 109.24Å 90.00° 100.62° 90.00°	Depositor
Resolution (Å)	36.56 – 2.10 39.96 – 2.10	Depositor EDS
% Data completeness (in resolution range)	96.5 (36.56-2.10) 92.3 (39.96-2.10)	Depositor EDS
$R_{merge}$	0.05	Depositor
$R_{sym}$	(Not available)	Depositor
$\langle I/\sigma(I) \rangle$ <sup>1</sup>	1.64 (at 2.10Å)	Xtrriage
Refinement program	PHENIX dev_3051	Depositor
R, $R_{free}$	0.213 , 0.235 0.211 , 0.233	Depositor DCC
$R_{free}$ test set	1987 reflections (2.75%)	wwPDB-VP
Wilson B-factor (Å <sup>2</sup> )	45.7	Xtrriage
Anisotropy	0.064	Xtrriage
Bulk solvent $k_{sol}$ (e/Å <sup>3</sup> ), $B_{sol}$ (Å <sup>2</sup> )	0.30 , 44.8	EDS
L-test for twinning <sup>2</sup>	$\langle  L  \rangle = 0.49$ , $\langle L^2 \rangle = 0.32$	Xtrriage
Estimated twinning fraction	No twinning to report.	Xtrriage
$F_o, F_c$ correlation	0.95	EDS
Total number of atoms	8305	wwPDB-VP
Average B, all atoms (Å <sup>2</sup> )	70.0	wwPDB-VP

Xtrriage's analysis on translational NCS is as follows: *The largest off-origin peak in the Patterson function is 5.43% of the height of the origin peak. No significant pseudotranslation is detected.*

<sup>1</sup>Intensities estimated from amplitudes.

<sup>2</sup>Theoretical values of  $\langle |L| \rangle$ ,  $\langle L^2 \rangle$  for acentric reflections are 0.5, 0.333 respectively for untwinned datasets, and 0.375, 0.2 for perfectly twinned datasets.

## 5 Model quality [i](#)

### 5.1 Standard geometry [i](#)

Bond lengths and bond angles in the following residue types are not validated in this section: DMS, MG, T27, EDO, FIC

The Z score for a bond length (or angle) is the number of standard deviations the observed value is removed from the expected value. A bond length (or angle) with  $|Z| > 5$  is considered an outlier worth inspection. RMSZ is the root-mean-square of all Z scores of the bond lengths (or angles).

Mol	Chain	Bond lengths		Bond angles	
		RMSZ	# Z  >5	RMSZ	# Z  >5
1	A	0.26	0/4672	0.44	0/6349
2	B	0.26	0/3581	0.46	0/4867
All	All	0.26	0/8253	0.45	0/11216

There are no bond length outliers.

There are no bond angle outliers.

There are no chirality outliers.

There are no planarity outliers.

### 5.2 Too-close contacts [i](#)

In the following table, the Non-H and H(model) columns list the number of non-hydrogen atoms and hydrogen atoms in the chain respectively. The H(added) column lists the number of hydrogen atoms added and optimized by MolProbity. The Clashes column lists the number of clashes within the asymmetric unit, whereas Symm-Clashes lists symmetry-related clashes.

Mol	Chain	Non-H	H(model)	H(added)	Clashes	Symm-Clashes
1	A	4545	0	4606	48	0
2	B	3466	0	3495	52	0
3	A	26	0	10	1	0
4	A	28	0	18	1	0
5	A	16	0	24	0	0
5	B	20	0	30	2	0
6	A	8	0	12	0	0
6	B	4	0	6	0	0
7	A	1	0	0	0	0
8	A	131	0	0	0	0
8	B	60	0	0	0	0
All	All	8305	0	8201	100	0

The all-atom clashscore is defined as the number of clashes found per 1000 atoms (including hydrogen atoms). The all-atom clashscore for this structure is 6.

All (100) close contacts within the same asymmetric unit are listed below, sorted by their clash magnitude.

Atom-1	Atom-2	Interatomic distance (Å)	Clash overlap (Å)
1:A:400:THR:HG21	1:A:428[B]:GLN:HE22	0.94	1.10
1:A:400:THR:HG21	1:A:428[B]:GLN:NE2	1.66	1.10
2:B:378:GLU:O	2:B:382:ILE:HD12	1.65	0.97
1:A:400:THR:CG2	1:A:428[B]:GLN:HE22	1.81	0.92
1:A:400:THR:CG2	1:A:428[B]:GLN:NE2	2.35	0.89
1:A:169:GLU:HG3	3:A:901:FIC:F14	1.64	0.88
2:B:26:LEU:H	5:B:502:DMS:H13	1.42	0.84
2:B:84:THR:HG21	2:B:153:TRP:HE1	1.44	0.83
1:A:428[B]:GLN:CA	1:A:429:LEU:N	2.45	0.79
1:A:427:TYR:C	1:A:428[B]:GLN:CA	2.50	0.79
2:B:201:LYS:HA	2:B:204:GLU:HB2	1.67	0.77
2:B:108:VAL:HB	2:B:232:TYR:HB3	1.73	0.71
2:B:200:THR:HA	2:B:203:GLU:HG2	1.73	0.70
1:A:194:GLU:H	1:A:194:GLU:CD	1.99	0.65
2:B:193:LEU:HD12	2:B:201:LYS:NZ	2.12	0.65
1:A:343:GLN:HG3	1:A:349:LEU:HD11	1.79	0.64
2:B:10:VAL:HG13	2:B:87:PHE:HZ	1.63	0.64
2:B:193:LEU:HD12	2:B:201:LYS:CE	2.29	0.64
2:B:10:VAL:HG13	2:B:87:PHE:CZ	2.33	0.63
1:A:425:LEU:HD13	1:A:428[B]:GLN:HE21	1.65	0.62
1:A:115:TYR:OH	1:A:156:SER:HB3	2.00	0.61
1:A:425:LEU:CD1	1:A:428[B]:GLN:HE21	2.13	0.61
2:B:197:GLN:C	2:B:201:LYS:HZ3	2.04	0.60
1:A:253:THR:HG22	1:A:255:ASN:H	1.65	0.60
2:B:193:LEU:HD12	2:B:201:LYS:HZ2	1.66	0.59
1:A:207:GLN:HE22	1:A:211[B]:ARG:CZ	2.15	0.59
1:A:252:TRP:HB2	1:A:295:LEU:HD11	1.83	0.59
2:B:177:ASP:OD2	2:B:177:ASP:N	2.31	0.59
2:B:370[B]:GLU:HG3	2:B:374:LYS:HD2	1.83	0.58
2:B:85:GLN:NE2	2:B:86:ASP:O	2.38	0.56
2:B:198:HIS:O	2:B:202:ILE:HG12	2.05	0.56
2:B:358:ARG:HH12	2:B:366:LYS:CE	2.21	0.54
2:B:101:LYS:HD3	2:B:382:ILE:HG23	1.90	0.53
1:A:536:VAL:HB	1:A:542:ILE:HD13	1.90	0.53
2:B:80:LEU:O	2:B:84:THR:HG23	2.09	0.53
2:B:360:ALA:O	2:B:367:GLN:NE2	2.39	0.53
2:B:200:THR:HA	2:B:203:GLU:CG	2.39	0.53

*Continued on next page...*

*Continued from previous page...*

Atom-1	Atom-2	Interatomic distance (Å)	Clash overlap (Å)
2:B:103:LYS:O	2:B:236:PRO:HG2	2.09	0.52
2:B:21:VAL:HB	2:B:59:PRO:HD3	1.90	0.52
2:B:8:VAL:HG11	2:B:159:ILE:HG12	1.92	0.52
1:A:516:GLU:O	1:A:520:GLN:HG3	2.09	0.51
1:A:104:LYS:HD3	1:A:192:ASP:HA	1.93	0.50
1:A:207:GLN:HE22	1:A:211[B]:ARG:NE	2.10	0.50
2:B:107:THR:OG1	2:B:198:HIS:NE2	2.43	0.49
2:B:22:LYS:HE3	2:B:23:GLN:O	2.12	0.49
1:A:405:TYR:CE2	1:A:407:GLN:HB2	2.48	0.49
2:B:242:GLN:HB3	2:B:351:THR:OG1	2.12	0.48
4:A:903:T27:N3	4:A:903:T27:H17	2.29	0.48
2:B:358:ARG:HH12	2:B:366:LYS:HE2	1.78	0.48
1:A:246:LEU:HD11	1:A:310:LEU:HD12	1.95	0.48
1:A:354:TYR:OH	1:A:370:GLU:OE1	2.31	0.47
1:A:369:THR:O	1:A:373[B]:GLN:HG2	2.14	0.47
2:B:230:MET:HG2	2:B:231:GLY:N	2.29	0.47
1:A:373[A]:GLN:HE21	2:B:401:TRP:HE1	1.63	0.47
2:B:198:HIS:HA	2:B:201:LYS:NZ	2.29	0.47
1:A:376:THR:O	1:A:380:ILE:HG12	2.14	0.47
2:B:87:PHE:HD2	2:B:87:PHE:N	2.13	0.47
1:A:28:GLU:HG3	1:A:135:ILE:HD12	1.96	0.47
2:B:163:SER:O	2:B:167:ILE:HG13	2.14	0.47
1:A:249:LYS:HB2	1:A:252:TRP:CE2	2.50	0.46
2:B:266:TRP:HB2	2:B:426[B]:TRP:CZ3	2.50	0.46
1:A:90:VAL:C	1:A:92:LEU:H	2.19	0.46
2:B:193:LEU:CD1	2:B:201:LYS:HZ2	2.28	0.46
2:B:136:ASN:HB3	2:B:138:GLU:HG3	1.98	0.46
1:A:448:ARG:HH11	1:A:448:ARG:HG2	1.80	0.46
1:A:390:LYS:NZ	1:A:415:GLU:OE1	2.49	0.46
2:B:11:LYS:HG3	2:B:12:LEU:O	2.17	0.45
2:B:87:PHE:N	2:B:87:PHE:CD2	2.84	0.45
1:A:317:VAL:O	1:A:349:LEU:HD23	2.17	0.45
2:B:193:LEU:HD12	2:B:201:LYS:HE3	1.98	0.45
1:A:13:LYS:HB2	1:A:16:MET:SD	2.57	0.45
2:B:204:GLU:O	2:B:207:GLN:HB2	2.17	0.45
2:B:360:ALA:HB2	2:B:366:LYS:HD3	1.98	0.45
1:A:94:ILE:H	1:A:94:ILE:HD12	1.82	0.45
1:A:126:LYS:HE3	1:A:127:TYR:CZ	2.52	0.45
2:B:38:CYS:SG	2:B:132:ILE:HD11	2.57	0.44
2:B:356:ARG:H	2:B:356:ARG:HE	1.64	0.44
1:A:426:TRP:HB3	1:A:526:ILE:HG12	1.98	0.44

*Continued on next page...*

Continued from previous page...

Atom-1	Atom-2	Interatomic distance (Å)	Clash overlap (Å)
1:A:417:VAL:HG22	1:A:419:THR:HG23	2.00	0.44
1:A:32:LYS:HD3	1:A:32:LYS:C	2.38	0.44
2:B:85:GLN:HE21	2:B:86:ASP:N	2.16	0.44
1:A:247:PRO:HG3	1:A:259:LYS:HZ1	1.82	0.43
2:B:358:ARG:NH2	2:B:359:GLY:HA3	2.34	0.43
1:A:363:ASN:HA	1:A:511:ASP:OD1	2.19	0.43
2:B:289:LEU:HD23	2:B:289:LEU:HA	1.91	0.42
1:A:31:ILE:O	1:A:35:VAL:HG23	2.19	0.42
1:A:246:LEU:HD12	1:A:307:ARG:HG2	2.01	0.42
1:A:38:CYS:SG	1:A:132:ILE:HD11	2.59	0.42
1:A:358:ARG:HD2	1:A:358:ARG:HA	1.70	0.42
1:A:27:THR:OG1	1:A:29:GLU:HG2	2.20	0.42
2:B:195:ILE:HD11	2:B:199:ARG:HH21	1.84	0.42
1:A:39:THR:O	1:A:43:LYS:HG3	2.20	0.41
1:A:226:PRO:HB3	1:A:235:HIS:CE1	2.55	0.41
1:A:400:THR:HG22	1:A:428[B]:GLN:NE2	2.29	0.41
2:B:180:ILE:HD11	2:B:189:VAL:HB	2.03	0.41
2:B:180:ILE:CD1	2:B:189:VAL:HB	2.51	0.41
1:A:446:ALA:H	1:A:474:ASN:ND2	2.19	0.41
2:B:244:ILE:HG12	5:B:505:DMS:H12	2.03	0.41
2:B:332:GLN:OE1	2:B:428:GLN:HB3	2.21	0.41
2:B:10:VAL:CG1	2:B:87:PHE:HZ	2.30	0.40

There are no symmetry-related clashes.

## 5.3 Torsion angles [i](#)

### 5.3.1 Protein backbone [i](#)

In the following table, the Percentiles column shows the percent Ramachandran outliers of the chain as a percentile score with respect to all X-ray entries followed by that with respect to entries of similar resolution.

The Analysed column shows the number of residues for which the backbone conformation was analysed, and the total number of residues.

Mol	Chain	Analysed	Favoured	Allowed	Outliers	Percentiles	
1	A	558/557 (100%)	547 (98%)	9 (2%)	2 (0%)	34	32
2	B	416/428 (97%)	402 (97%)	14 (3%)	0	100	100
All	All	974/985 (99%)	949 (97%)	23 (2%)	2 (0%)	47	49

All (2) Ramachandran outliers are listed below:

Mol	Chain	Res	Type
1	A	91	GLN
1	A	270	ILE

### 5.3.2 Protein sidechains [i](#)

In the following table, the Percentiles column shows the percent sidechain outliers of the chain as a percentile score with respect to all X-ray entries followed by that with respect to entries of similar resolution.

The Analysed column shows the number of residues for which the sidechain conformation was analysed, and the total number of residues.

Mol	Chain	Analysed	Rotameric	Outliers	Percentiles
1	A	499/495 (101%)	489 (98%)	10 (2%)	55 60
2	B	381/390 (98%)	375 (98%)	6 (2%)	62 69
All	All	880/885 (99%)	864 (98%)	16 (2%)	60 65

All (16) residues with a non-rotameric sidechain are listed below:

Mol	Chain	Res	Type
1	A	32	LYS
1	A	90	VAL
1	A	180	ILE
1	A	207	GLN
1	A	259	LYS
1	A	277	ARG
1	A	373[A]	GLN
1	A	373[B]	GLN
1	A	448	ARG
1	A	512	LYS
2	B	88	TRP
2	B	172	LYS
2	B	237	ASP
2	B	242	GLN
2	B	277	ARG
2	B	356	ARG

Sometimes sidechains can be flipped to improve hydrogen bonding and reduce clashes. All (4) such sidechains are listed below:

Mol	Chain	Res	Type
1	A	207	GLN
2	B	85	GLN
2	B	207	GLN
2	B	242	GLN

### 5.3.3 RNA [i](#)

There are no RNA molecules in this entry.

### 5.4 Non-standard residues in protein, DNA, RNA chains [i](#)

There are no non-standard protein/DNA/RNA residues in this entry.

### 5.5 Carbohydrates [i](#)

There are no monosaccharides in this entry.

### 5.6 Ligand geometry [i](#)

Of 16 ligands modelled in this entry, 1 is monoatomic - leaving 15 for Mogul analysis.

In the following table, the Counts columns list the number of bonds (or angles) for which Mogul statistics could be retrieved, the number of bonds (or angles) that are observed in the model and the number of bonds (or angles) that are defined in the Chemical Component Dictionary. The Link column lists molecule types, if any, to which the group is linked. The Z score for a bond length (or angle) is the number of standard deviations the observed value is removed from the expected value. A bond length (or angle) with  $|Z| > 2$  is considered an outlier worth inspection. RMSZ is the root-mean-square of all Z scores of the bond lengths (or angles).

Mol	Type	Chain	Res	Link	Bond lengths			Bond angles		
					Counts	RMSZ	# Z  > 2	Counts	RMSZ	# Z  > 2
5	DMS	A	906	-	3,3,3	2.66	1 (33%)	3,3,3	0.51	0
5	DMS	B	501	-	3,3,3	2.66	1 (33%)	3,3,3	0.51	0
5	DMS	A	907	-	3,3,3	2.67	1 (33%)	3,3,3	0.51	0
5	DMS	A	904	-	3,3,3	2.67	1 (33%)	3,3,3	0.50	0
6	EDO	A	908	-	3,3,3	0.45	0	2,2,2	0.35	0
5	DMS	B	503	-	3,3,3	2.66	1 (33%)	3,3,3	0.53	0
5	DMS	B	504	-	3,3,3	2.57	1 (33%)	3,3,3	0.41	0
6	EDO	A	909	-	3,3,3	0.46	0	2,2,2	0.35	0
5	DMS	B	505	-	3,3,3	2.63	1 (33%)	3,3,3	0.53	0

Mol	Type	Chain	Res	Link	Bond lengths			Bond angles		
					Counts	RMSZ	# Z  > 2	Counts	RMSZ	# Z  > 2
3	FIC	A	902[A]	-	12,14,14	1.50	3 (25%)	16,20,20	1.37	3 (18%)
3	FIC	A	901	-	12,14,14	1.53	3 (25%)	16,20,20	1.31	3 (18%)
5	DMS	A	905	-	3,3,3	2.67	1 (33%)	3,3,3	0.49	0
6	EDO	B	506	-	3,3,3	0.46	0	2,2,2	0.32	0
5	DMS	B	502	-	3,3,3	2.65	1 (33%)	3,3,3	0.49	0
4	T27	A	903	-	30,30,30	1.24	4 (13%)	39,40,40	1.81	7 (17%)

In the following table, the Chirals column lists the number of chiral outliers, the number of chiral centers analysed, the number of these observed in the model and the number defined in the Chemical Component Dictionary. Similar counts are reported in the Torsion and Rings columns. '-' means no outliers of that kind were identified.

Mol	Type	Chain	Res	Link	Chirals	Torsions	Rings
6	EDO	A	908	-	-	1/1/1/1	-
6	EDO	A	909	-	-	0/1/1/1	-
3	FIC	A	902[A]	-	-	0/2/4/4	0/2/2/2
3	FIC	A	901	-	-	0/2/4/4	0/2/2/2
6	EDO	B	506	-	-	0/1/1/1	-
4	T27	A	903	-	-	2/13/14/14	0/3/3/3

All (19) bond length outliers are listed below:

Mol	Chain	Res	Type	Atoms	Z	Observed(Å)	Ideal(Å)
5	A	905	DMS	O-S	4.48	1.80	1.50
5	A	907	DMS	O-S	4.48	1.80	1.50
5	A	904	DMS	O-S	4.47	1.80	1.50
5	A	906	DMS	O-S	4.47	1.80	1.50
5	B	501	DMS	O-S	4.46	1.80	1.50
5	B	503	DMS	O-S	4.46	1.80	1.50
5	B	502	DMS	O-S	4.46	1.80	1.50
5	B	505	DMS	O-S	4.40	1.80	1.50
5	B	504	DMS	O-S	4.32	1.79	1.50
4	A	903	T27	C12-N4	4.14	1.45	1.36
4	A	903	T27	C11-N1	3.49	1.44	1.38
3	A	901	FIC	O12-C10	-2.93	1.21	1.30
3	A	902[A]	FIC	O12-C10	-2.74	1.22	1.30
3	A	901	FIC	O11-C10	2.66	1.30	1.22
3	A	902[A]	FIC	O11-C10	2.39	1.29	1.22
4	A	903	T27	C13-C19	2.32	1.49	1.44
3	A	902[A]	FIC	C2-C10	-2.26	1.47	1.50
4	A	903	T27	C16-N4	2.02	1.45	1.40

Continued on next page...



Continued from previous page...

Mol	Chain	Res	Type	Atoms	Z	Observed(Å)	Ideal(Å)
3	A	901	FIC	C2-C10	-2.01	1.48	1.50

All (13) bond angle outliers are listed below:

Mol	Chain	Res	Type	Atoms	Z	Observed(°)	Ideal(°)
4	A	903	T27	N2-C12-N3	-6.03	120.84	126.55
4	A	903	T27	C9-N2-C12	5.19	120.05	115.45
4	A	903	T27	C9-C10-C11	3.56	119.09	116.76
3	A	902[A]	FIC	O11-C10-C2	-3.29	114.57	121.24
4	A	903	T27	C10-C11-N3	-3.28	117.62	123.16
4	A	903	T27	C10-C9-N2	-3.18	120.00	123.96
3	A	902[A]	FIC	O12-C10-C2	3.07	121.68	114.69
4	A	903	T27	C12-N3-C11	3.07	122.40	116.28
3	A	901	FIC	O11-C10-C2	-3.02	115.11	121.24
3	A	901	FIC	O12-C10-C2	2.86	121.19	114.69
4	A	903	T27	C6-N1-C11	-2.35	119.94	124.18
3	A	901	FIC	C2-N1-C8	2.15	108.94	104.45
3	A	902[A]	FIC	C2-N1-C8	2.13	108.89	104.45

There are no chirality outliers.

All (3) torsion outliers are listed below:

Mol	Chain	Res	Type	Atoms
4	A	903	T27	C20-C21-C3-C4
4	A	903	T27	C20-C21-C3-C2
6	A	908	EDO	O1-C1-C2-O2

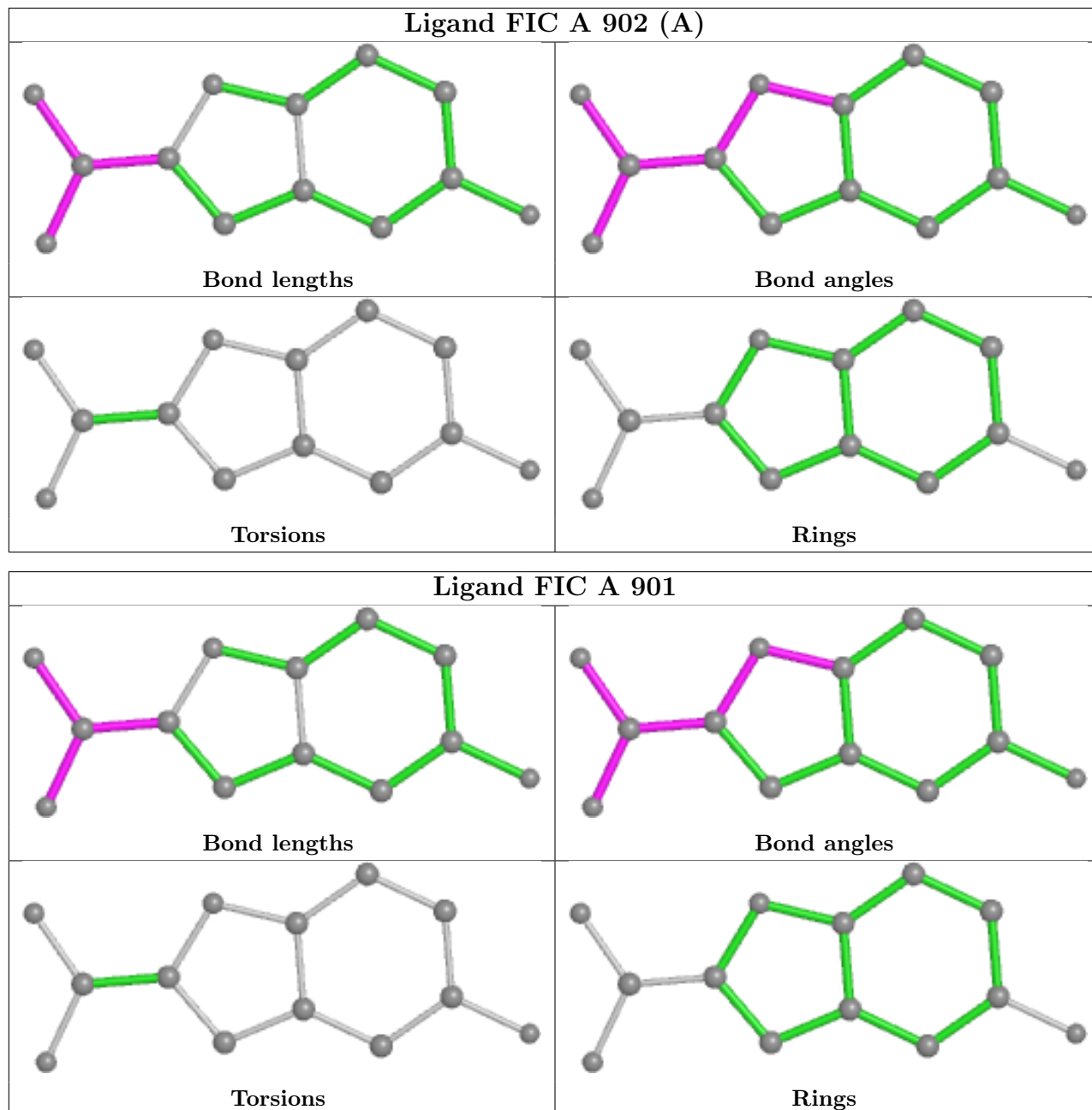
There are no ring outliers.

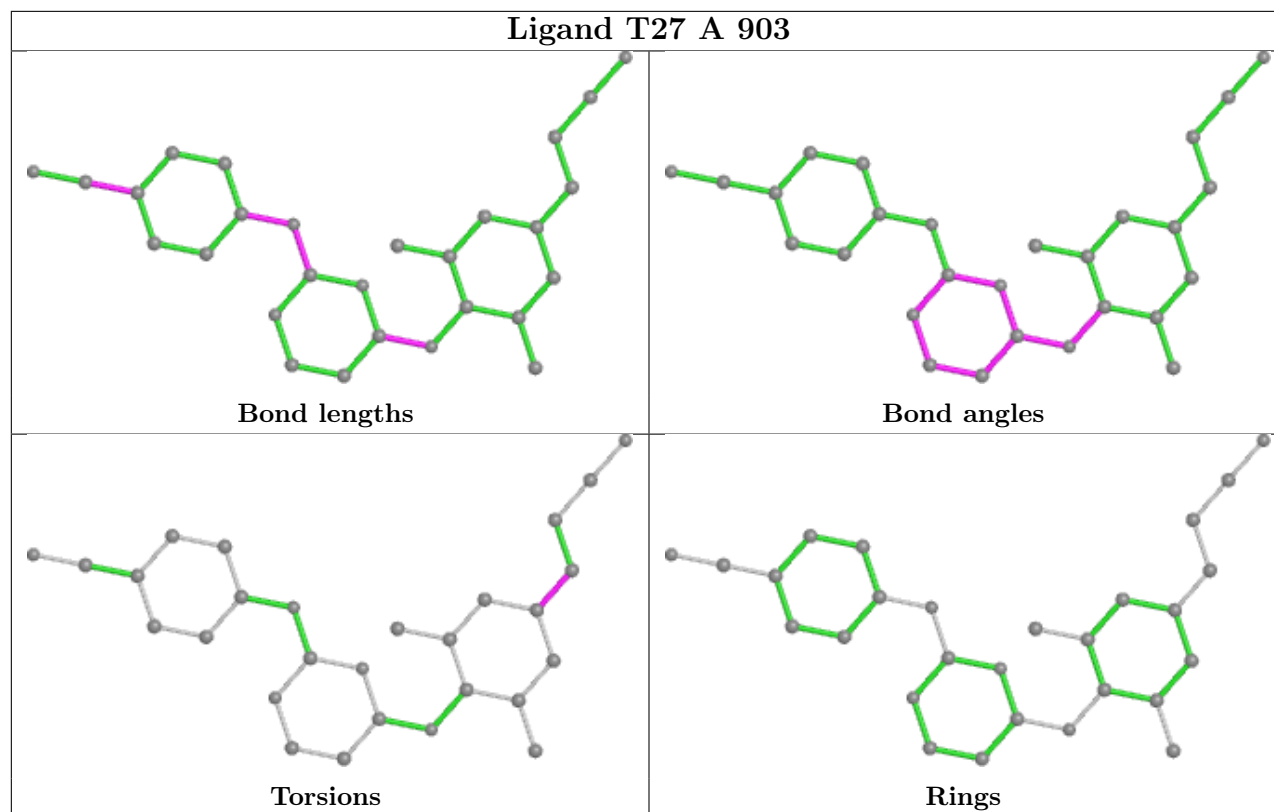
4 monomers are involved in 4 short contacts:

Mol	Chain	Res	Type	Clashes	Symm-Clashes
5	B	505	DMS	1	0
3	A	901	FIC	1	0
5	B	502	DMS	1	0
4	A	903	T27	1	0

The following is a two-dimensional graphical depiction of Mogul quality analysis of bond lengths, bond angles, torsion angles, and ring geometry for all instances of the Ligand of Interest. In addition, ligands with molecular weight > 250 and outliers as shown on the validation Tables will also be included. For torsion angles, if less than 5% of the Mogul distribution of torsion angles is within 10 degrees of the torsion angle in question, then that torsion angle is considered an outlier.

Any bond that is central to one or more torsion angles identified as an outlier by Mogul will be highlighted in the graph. For rings, the root-mean-square deviation (RMSD) between the ring in question and similar rings identified by Mogul is calculated over all ring torsion angles. If the average RMSD is greater than 60 degrees and the minimal RMSD between the ring in question and any Mogul-identified rings is also greater than 60 degrees, then that ring is considered an outlier. The outliers are highlighted in purple. The color gray indicates Mogul did not find sufficient equivalents in the CSD to analyse the geometry.





## 5.7 Other polymers [i](#)

There are no such residues in this entry.

## 5.8 Polymer linkage issues [i](#)

There are no chain breaks in this entry.

## 6 Fit of model and data

### 6.1 Protein, DNA and RNA chains

In the following table, the column labelled ‘#RSRZ > 2’ contains the number (and percentage) of RSRZ outliers, followed by percent RSRZ outliers for the chain as percentile scores relative to all X-ray entries and entries of similar resolution. The OWAB column contains the minimum, median, 95<sup>th</sup> percentile and maximum values of the occupancy-weighted average B-factor per residue. The column labelled ‘Q < 0.9’ lists the number of (and percentage) of residues with an average occupancy less than 0.9.

Mol	Chain	Analysed	<RSRZ>	#RSRZ>2	OWAB(Å <sup>2</sup> )	Q<0.9
1	A	556/557 (99%)	0.45	50 (8%) <b>9</b> <b>12</b>	35, 59, 131, 225	0
2	B	415/428 (96%)	0.78	47 (11%) <b>5</b> <b>6</b>	35, 61, 163, 257	0
All	All	971/985 (98%)	0.59	97 (9%) <b>7</b> <b>9</b>	35, 60, 148, 257	0

All (97) RSRZ outliers are listed below:

Mol	Chain	Res	Type	RSRZ
2	B	90	VAL	12.0
2	B	229	TRP	11.1
1	A	285	GLY	10.8
2	B	231	GLY	9.8
2	B	89	GLU	9.3
2	B	92	LEU	9.2
2	B	93	GLY	6.6
1	A	67	ASP	6.4
2	B	7	THR	6.3
2	B	88	TRP	6.2
1	A	289	LEU	6.0
1	A	290	THR	5.9
2	B	358	ARG	5.8
2	B	5	ILE	5.7
2	B	214	LEU	5.5
2	B	226	PRO	5.5
1	A	287	LYS	5.4
1	A	257	ILE	5.3
1	A	222	GLN	5.2
1	A	69	THR	5.1
2	B	225	PRO	4.9
2	B	232	TYR	4.8
2	B	212	TRP	4.8
2	B	66	LYS	4.7

*Continued on next page...*

*Continued from previous page...*

<b>Mol</b>	<b>Chain</b>	<b>Res</b>	<b>Type</b>	<b>RSRZ</b>
1	A	286	THR	4.7
2	B	240	THR	4.6
1	A	284	ARG	4.6
2	B	91	GLN	4.6
2	B	356	ARG	4.5
1	A	220	LYS	4.5
2	B	202	ILE	4.4
1	A	68	SER	4.4
1	A	219	LYS	4.4
1	A	292	VAL	4.3
2	B	227	PHE	4.2
1	A	66	LYS	4.1
2	B	85	GLN	4.1
1	A	301	LEU	3.9
1	A	70	LYS	3.9
2	B	209	LEU	3.8
1	A	218	ASP	3.8
1	A	250	ASP	3.8
2	B	238	LYS	3.7
1	A	221	HIS	3.7
2	B	168	LEU	3.7
1	A	116	PHE	3.7
1	A	64	LYS	3.7
1	A	282	LEU	3.7
1	A	554	ALA	3.6
1	A	71	TRP	3.6
2	B	6	GLU	3.5
1	A	223	LYS	3.4
1	A	91	GLN	3.4
1	A	217	PRO	3.4
1	A	92	LEU	3.4
1	A	115	TYR	3.4
2	B	230	MET	3.3
2	B	197	GLN	3.3
1	A	283	LEU	3.2
2	B	237	ASP	3.1
1	A	65	LYS	3.1
2	B	241	VAL	3.1
2	B	14	PRO	3.0
1	A	291	GLU	2.9
1	A	24	TRP	2.9
2	B	94	ILE	2.9

*Continued on next page...*

*Continued from previous page...*

Mol	Chain	Res	Type	RSRZ
2	B	357	MET	2.7
2	B	239	TRP	2.6
1	A	288	ALA	2.6
2	B	87	PHE	2.6
2	B	67	ASP	2.6
1	A	254	VAL	2.6
2	B	198	HIS	2.5
2	B	196	GLY	2.5
2	B	177	ASP	2.5
2	B	179	VAL	2.5
2	B	65	LYS	2.5
1	A	546	GLU	2.4
2	B	195	ILE	2.4
1	A	72	ARG	2.4
2	B	180	ILE	2.4
1	A	360	ALA	2.2
2	B	171	PHE	2.2
2	B	200	THR	2.2
1	A	298	GLU	2.2
1	A	252	TRP	2.2
2	B	170	PRO	2.2
2	B	176	PRO	2.2
1	A	36	GLU	2.2
1	A	552	VAL	2.2
1	A	410	TRP	2.1
1	A	452	LEU	2.1
1	A	449	GLU	2.1
1	A	275	LYS	2.1
1	A	109	LEU	2.0
1	A	295	LEU	2.0
1	A	38	CYS	2.0

## 6.2 Non-standard residues in protein, DNA, RNA chains [i](#)

There are no non-standard protein/DNA/RNA residues in this entry.

## 6.3 Carbohydrates [i](#)

There are no monosaccharides in this entry.

## 6.4 Ligands

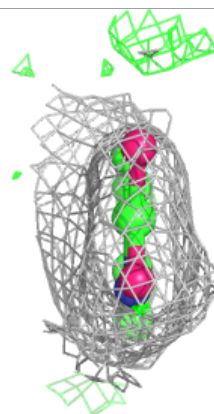
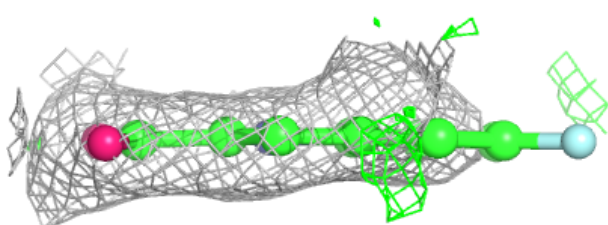
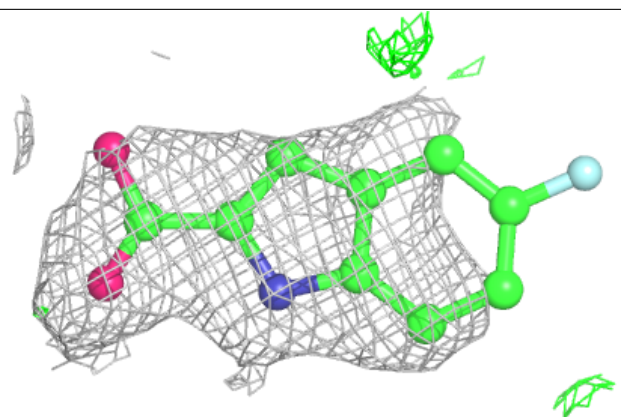
In the following table, the Atoms column lists the number of modelled atoms in the group and the number defined in the chemical component dictionary. The B-factors column lists the minimum, median, 95<sup>th</sup> percentile and maximum values of B factors of atoms in the group. The column labelled 'Q< 0.9' lists the number of atoms with occupancy less than 0.9.

Mol	Type	Chain	Res	Atoms	RSCC	RSR	B-factors(Å <sup>2</sup> )	Q<0.9
5	DMS	B	502	4/4	0.56	0.45	59,60,67,106	0
7	MG	A	910	1/1	0.59	0.15	86,86,86,86	0
3	FIC	A	902[A]	13/13	0.72	0.31	56,71,94,97	13
6	EDO	A	908	4/4	0.73	0.47	59,64,73,82	0
5	DMS	A	907	4/4	0.81	0.23	65,71,77,94	0
5	DMS	B	504	4/4	0.81	0.29	67,71,79,109	0
3	FIC	A	901	13/13	0.87	0.23	52,60,65,85	0
5	DMS	A	906	4/4	0.88	0.29	69,82,85,88	0
5	DMS	B	505	4/4	0.88	0.30	60,65,84,95	0
6	EDO	B	506	4/4	0.90	0.24	45,55,57,58	0
5	DMS	A	904	4/4	0.93	0.12	80,81,86,97	0
6	EDO	A	909	4/4	0.93	0.13	50,50,55,59	0
5	DMS	B	501	4/4	0.94	0.18	53,60,65,70	0
5	DMS	B	503	4/4	0.95	0.20	56,60,72,72	0
4	T27	A	903	28/28	0.96	0.13	40,45,55,59	0
5	DMS	A	905	4/4	0.97	0.14	57,67,68,69	0

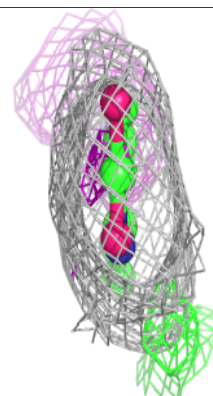
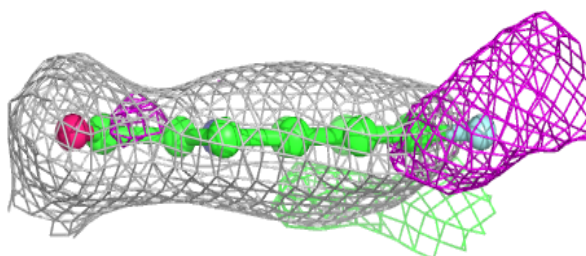
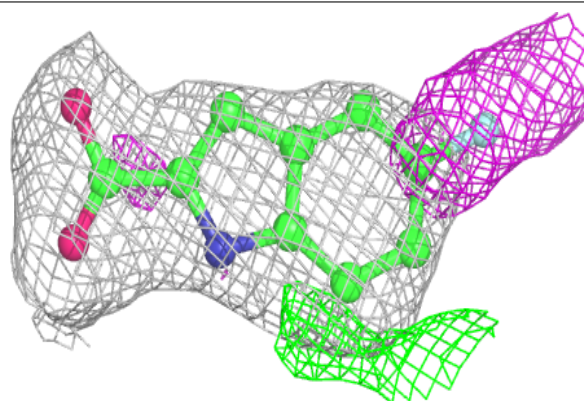
The following is a graphical depiction of the model fit to experimental electron density of all instances of the Ligand of Interest. In addition, ligands with molecular weight > 250 and outliers as shown on the geometry validation Tables will also be included. Each fit is shown from different orientation to approximate a three-dimensional view.

**Electron density around FIC A 902 (A):**

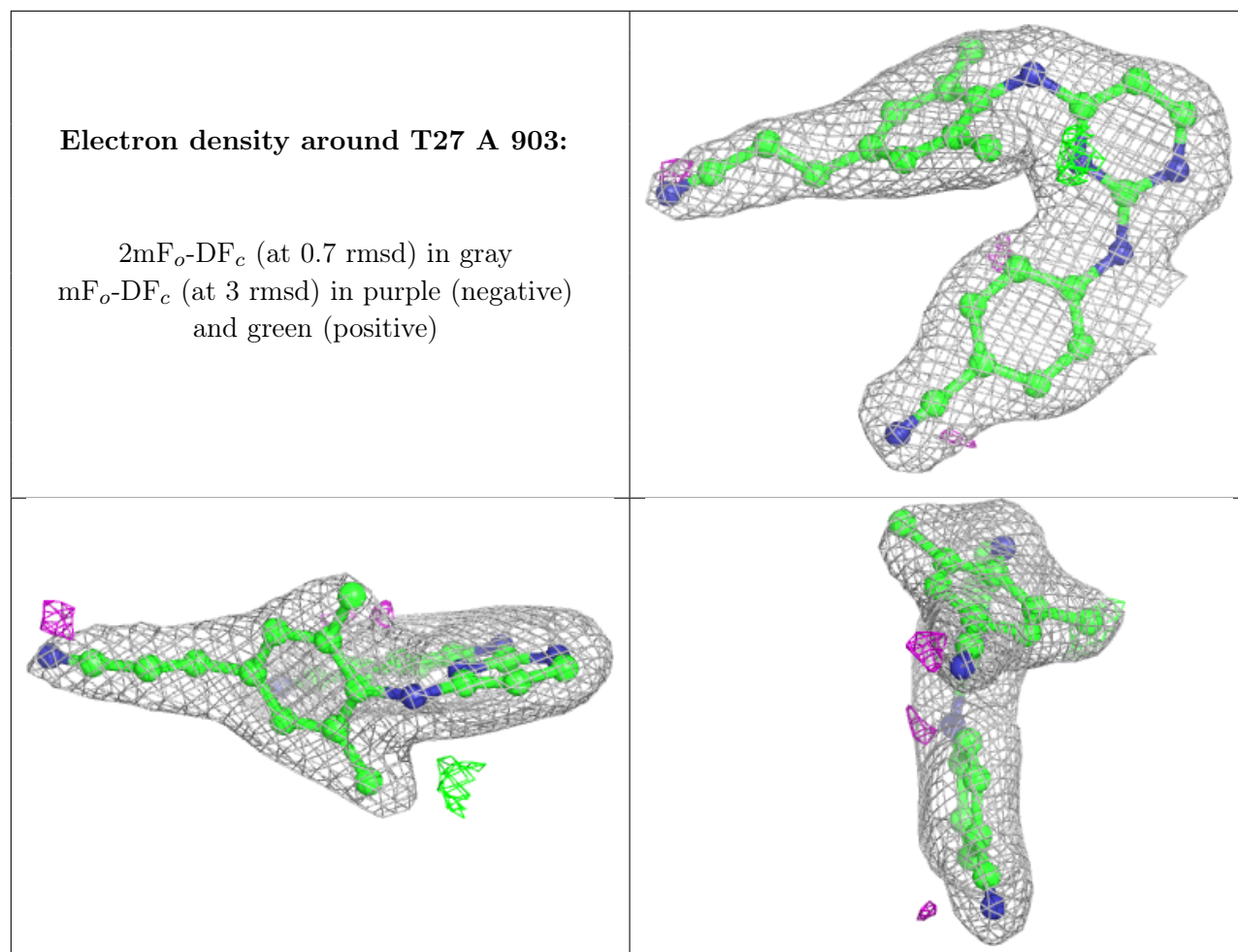
$2mF_o-DF_c$  (at 0.7 rmsd) in gray  
 $mF_o-DF_c$  (at 3 rmsd) in purple (negative)  
and green (positive)

**Electron density around FIC A 901:**

$2mF_o-DF_c$  (at 0.7 rmsd) in gray  
 $mF_o-DF_c$  (at 3 rmsd) in purple (negative)  
and green (positive)







## 6.5 Other polymers [i](#)

There are no such residues in this entry.