



Full wwPDB X-ray Structure Validation Report ⓘ

Jan 27, 2024 – 09:53 PM EST

PDB ID : 1DJ6
Title : COMPLEX OF A Z-DNA HEXAMER, D(CG)3, WITH SYNTHETIC POLYAMINE AT ROOM TEMPERATURE
Authors : Ohishi, H.; Tomita, K.-i.; Nakanishi, I.; Ohtsuchi, M.; Hakoshima, T.; Rich, A.
Deposited on : 1999-12-01
Resolution : 1.00 Å(reported)

This is a Full wwPDB X-ray Structure Validation Report for a publicly released PDB entry.

We welcome your comments at validation@mail.wwpdb.org

A user guide is available at

<https://www.wwpdb.org/validation/2017/XrayValidationReportHelp>

with specific help available everywhere you see the ⓘ symbol.

The types of validation reports are described at

<http://www.wwpdb.org/validation/2017/FAQs#types>.

The following versions of software and data (see [references ⓘ](#)) were used in the production of this report:

MolProbity : 4.02b-467
Mogul : 1.8.5 (274361), CSD as541be (2020)
Xtriage (Phenix) : 1.13
EDS : 2.36
Percentile statistics : 20191225.v01 (using entries in the PDB archive December 25th 2019)
Refmac : 5.8.0158
CCP4 : 7.0.044 (Gargrove)
Ideal geometry (proteins) : Engh & Huber (2001)
Ideal geometry (DNA, RNA) : Parkinson et al. (1996)
Validation Pipeline (wwPDB-VP) : 2.36

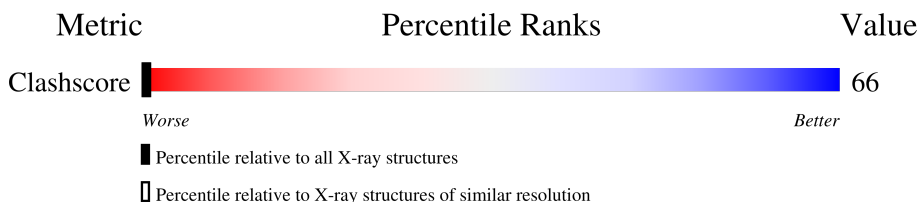
1 Overall quality at a glance

The following experimental techniques were used to determine the structure:

X-RAY DIFFRACTION



The reported resolution of this entry is 1.00 Å.

Percentile scores (ranging between 0-100) for global validation metrics of the entry are shown in the following graphic. The table shows the number of entries on which the scores are based.



Metric	Whole archive (#Entries)	Similar resolution (#Entries, resolution range(Å))
Clashscore	141614	1117 (1.06-0.94)

The table below summarises the geometric issues observed across the polymeric chains and their fit to the electron density. The red, orange, yellow and green segments of the lower bar indicate the fraction of residues that contain outliers for ≥ 3 , 2, 1 and 0 types of geometric quality criteria respectively. A grey segment represents the fraction of residues that are not modelled. The numeric value for each fraction is indicated below the corresponding segment, with a dot representing fractions $\leq 5\%$

Mol	Chain	Length	Quality of chain
1	A	6	
1	B	6	

The following table lists non-polymeric compounds, carbohydrate monomers and non-standard residues in protein, DNA, RNA chains that are outliers for geometric or electron-density-fit criteria:

Mol	Type	Chain	Res	Chirality	Geometry	Clashes	Electron density
3	104	A	13	-	X	X	-
3	104	B	14	-	-	X	-

2 Entry composition [i](#)

There are 4 unique types of molecules in this entry. The entry contains 349 atoms, of which 0 are hydrogens and 0 are deuteriums.

In the tables below, the ZeroOcc column contains the number of atoms modelled with zero occupancy, the AltConf column contains the number of residues with at least one atom in alternate conformation and the Trace column contains the number of residues modelled with at most 2 atoms.

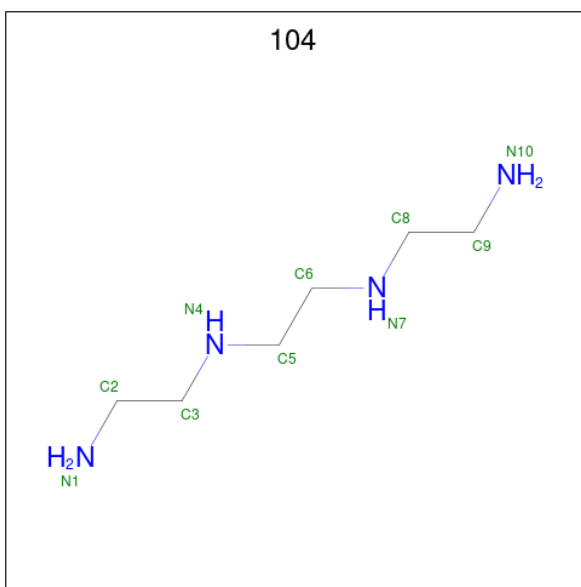
- Molecule 1 is a DNA chain called 5'-D(*CP*GP*CP*GP*CP*G)-3'.

Mol	Chain	Residues	Atoms					ZeroOcc	AltConf	Trace
			Total	C	N	O	P			
1	A	6	Total 120	C 57	N 24	O 34	P 5	0	0	0
1	B	6	Total 120	C 57	N 24	O 34	P 5	0	0	0

- Molecule 2 is MAGNESIUM ION (three-letter code: MG) (formula: Mg).

Mol	Chain	Residues	Atoms		ZeroOcc	AltConf
2	A	1	Total 1	Mg 1	0	0

- Molecule 3 is N,N'-BIS(2-AMINOETHYL)-1,2-ETHANEDIAMINE (three-letter code: 104) (formula: C₆H₁₈N₄).



Mol	Chain	Residues	Atoms			ZeroOcc	AltConf
3	A	1	Total	C	N	0	0
			10	6	4		
3	B	1	Total	C	N	0	0
			10	6	4		

- Molecule 4 is water.

Mol	Chain	Residues	Atoms		ZeroOcc	AltConf
4	A	56	Total	O	0	0
			56	56		
4	B	32	Total	O	0	0
			32	32		

3 Residue-property plots

These plots are drawn for all protein, RNA, DNA and oligosaccharide chains in the entry. The first graphic for a chain summarises the proportions of the various outlier classes displayed in the second graphic. The second graphic shows the sequence view annotated by issues in geometry. Residues are color-coded according to the number of geometric quality criteria for which they contain at least one outlier: green = 0, yellow = 1, orange = 2 and red = 3 or more. Stretches of 2 or more consecutive residues without any outlier are shown as a green connector. Residues present in the sample, but not in the model, are shown in grey.

- Molecule 1: 5'-D(*CP*GP*CP*GP*CP*G)-3'



- Molecule 1: 5'-D(*CP*GP*CP*GP*CP*G)-3'



4 Data and refinement statistics

Property	Value	Source
Space group	P 21 21 21	Depositor
Cell constants a, b, c, α , β , γ	17.93Å 31.36Å 44.62Å 90.00° 90.00° 90.00°	Depositor
Resolution (Å)	10.00 – 1.00 25.66 – 1.00	Depositor EDS
% Data completeness (in resolution range)	96.4 (10.00-1.00) 82.5 (25.66-1.00)	Depositor EDS
R_{merge}	(Not available)	Depositor
R_{sym}	(Not available)	Depositor
$\langle I/\sigma(I) \rangle$ ¹	2.06 (at 1.00Å)	Xtrriage
Refinement program	SHELXL	Depositor
R, R_{free}	0.140 , 0.169 0.191 , (Not available)	Depositor DCC
R_{free} test set	No test flags present.	wwPDB-VP
Wilson B-factor (Å ²)	4.8	Xtrriage
Anisotropy	0.048	Xtrriage
Bulk solvent k_{sol} (e/Å ³), B_{sol} (Å ²)	0.24 , 56.2	EDS
L-test for twinning ²	$\langle L \rangle = 0.47$, $\langle L^2 \rangle = 0.30$	Xtrriage
Estimated twinning fraction	No twinning to report.	Xtrriage
F_o, F_c correlation	0.96	EDS
Total number of atoms	349	wwPDB-VP
Average B, all atoms (Å ²)	11.0	wwPDB-VP

Xtrriage's analysis on translational NCS is as follows: *The analyses of the Patterson function reveals a significant off-origin peak that is 36.76 % of the origin peak, indicating pseudo-translational symmetry. The chance of finding a peak of this or larger height randomly in a structure without pseudo-translational symmetry is equal to 4.7592e-04. The detected translational NCS is most likely also responsible for the elevated intensity ratio.*

¹Intensities estimated from amplitudes.

²Theoretical values of $\langle |L| \rangle$, $\langle L^2 \rangle$ for acentric reflections are 0.5, 0.333 respectively for untwinned datasets, and 0.375, 0.2 for perfectly twinned datasets.

5 Model quality i

5.1 Standard geometry i

Bond lengths and bond angles in the following residue types are not validated in this section: MG, 104

The Z score for a bond length (or angle) is the number of standard deviations the observed value is removed from the expected value. A bond length (or angle) with $|Z| > 5$ is considered an outlier worth inspection. RMSZ is the root-mean-square of all Z scores of the bond lengths (or angles).

Mol	Chain	Bond lengths		Bond angles	
		RMSZ	# Z >5	RMSZ	# Z >5
1	A	7.93	56/134 (41.8%)	7.38	75/205 (36.6%)
1	B	7.70	54/134 (40.3%)	6.10	55/205 (26.8%)
All	All	7.82	110/268 (41.0%)	6.77	130/410 (31.7%)

Chiral center outliers are detected by calculating the chiral volume of a chiral center and verifying if the center is modelled as a planar moiety or with the opposite hand. A planarity outlier is detected by checking planarity of atoms in a peptide group, atoms in a mainchain group or atoms of a sidechain that are expected to be planar.

Mol	Chain	#Chirality outliers	#Planarity outliers
1	B	0	1

All (110) bond length outliers are listed below:

Mol	Chain	Res	Type	Atoms	Z	Observed(Å)	Ideal(Å)
1	B	11	DC	C4'-C3'	29.23	1.82	1.53
1	A	4	DG	C6-N1	27.93	1.59	1.39
1	A	4	DG	C5-C6	-26.13	1.16	1.42
1	B	7	DC	N1-C6	22.55	1.50	1.37
1	A	6	DG	C8-N7	22.40	1.44	1.30
1	A	2	DG	C2-N3	21.65	1.50	1.32
1	B	8	DG	C8-N7	19.38	1.42	1.30
1	A	2	DG	O4'-C1'	18.92	1.65	1.42
1	A	5	DC	C5-C6	18.53	1.49	1.34
1	A	2	DG	N9-C4	18.18	1.52	1.38
1	B	7	DC	C4-N4	-17.53	1.18	1.33
1	A	1	DC	C5-C6	-16.73	1.21	1.34
1	A	4	DG	C6-O6	16.71	1.39	1.24
1	B	11	DC	N3-C4	16.28	1.45	1.33
1	B	10	DG	C2'-C1'	15.56	1.68	1.52
1	B	8	DG	C3'-C2'	15.49	1.70	1.52

Continued on next page...

Continued from previous page...

Mol	Chain	Res	Type	Atoms	Z	Observed(Å)	Ideal(Å)
1	B	11	DC	C4-N4	-15.43	1.20	1.33
1	B	11	DC	C5'-C4'	-15.32	1.34	1.51
1	B	12	DG	N3-C4	-14.54	1.25	1.35
1	A	6	DG	C5-C4	14.33	1.48	1.38
1	B	7	DC	C4'-O4'	-14.16	1.30	1.45
1	A	6	DG	N1-C2	13.88	1.48	1.37
1	A	2	DG	C3'-C2'	13.58	1.68	1.52
1	B	10	DG	N9-C4	-13.50	1.27	1.38
1	A	2	DG	C5-C4	13.48	1.47	1.38
1	B	8	DG	C5-C6	13.46	1.55	1.42
1	B	9	DC	N1-C6	13.42	1.45	1.37
1	B	11	DC	C2-N3	13.26	1.46	1.35
1	B	11	DC	N1-C6	-13.13	1.29	1.37
1	B	10	DG	N9-C8	-13.03	1.28	1.37
1	B	11	DC	C3'-C2'	12.21	1.67	1.52
1	A	3	DC	C2-O2	12.17	1.35	1.24
1	B	8	DG	C6-O6	-12.03	1.13	1.24
1	B	8	DG	N7-C5	-11.82	1.32	1.39
1	B	12	DG	C4'-C3'	11.76	1.65	1.53
1	B	11	DC	C4-C5	11.67	1.52	1.43
1	B	7	DC	N3-C4	11.42	1.42	1.33
1	A	6	DG	N7-C5	11.35	1.46	1.39
1	A	3	DC	N1-C6	-11.31	1.30	1.37
1	A	4	DG	C4'-C3'	11.31	1.64	1.53
1	B	10	DG	C3'-C2'	-11.22	1.38	1.52
1	A	1	DC	C4-C5	11.00	1.51	1.43
1	B	10	DG	C4'-O4'	-10.94	1.34	1.45
1	A	3	DC	C4-N4	10.83	1.43	1.33
1	A	2	DG	N3-C4	-10.77	1.27	1.35
1	A	4	DG	C2'-C1'	10.52	1.62	1.52
1	B	11	DC	C4'-O4'	-10.51	1.34	1.45
1	A	2	DG	C6-N1	-10.46	1.32	1.39
1	A	3	DC	C2'-C1'	10.22	1.62	1.52
1	B	10	DG	C1'-N9	10.15	1.62	1.49
1	A	3	DC	C1'-N1	10.01	1.62	1.49
1	A	6	DG	C2'-C1'	9.82	1.62	1.52
1	A	2	DG	N7-C5	-9.81	1.33	1.39
1	A	6	DG	C1'-N9	-9.75	1.33	1.47
1	B	8	DG	C6-N1	9.75	1.46	1.39
1	B	7	DC	C4-C5	-9.69	1.35	1.43
1	A	3	DC	C4'-O4'	9.21	1.54	1.45
1	A	1	DC	C1'-N1	9.14	1.61	1.49

Continued on next page...

Continued from previous page...

Mol	Chain	Res	Type	Atoms	Z	Observed(Å)	Ideal(Å)
1	B	9	DC	C3'-C2'	8.74	1.62	1.52
1	A	4	DG	C5'-C4'	8.70	1.60	1.51
1	B	9	DC	C4-C5	8.68	1.49	1.43
1	A	2	DG	C2'-C1'	-8.66	1.43	1.52
1	A	5	DC	N1-C6	8.66	1.42	1.37
1	B	9	DC	C1'-N1	8.39	1.60	1.49
1	B	12	DG	N9-C4	8.32	1.44	1.38
1	B	10	DG	N7-C5	-8.30	1.34	1.39
1	B	10	DG	C3'-O3'	8.19	1.54	1.44
1	A	3	DC	C2-N3	-8.16	1.29	1.35
1	A	5	DC	N1-C2	8.03	1.48	1.40
1	A	4	DG	C8-N7	-7.96	1.26	1.30
1	B	9	DC	C4'-O4'	-7.82	1.37	1.45
1	B	12	DG	C2'-C1'	7.63	1.59	1.52
1	A	2	DG	C4'-C3'	7.61	1.60	1.53
1	A	4	DG	C3'-C2'	-7.51	1.43	1.52
1	B	7	DC	O5'-C5'	7.44	1.60	1.42
1	A	2	DG	C5'-C4'	-7.31	1.43	1.51
1	A	4	DG	C2-N3	-7.27	1.26	1.32
1	A	5	DC	C4-N4	7.24	1.40	1.33
1	A	1	DC	C2'-C1'	7.22	1.59	1.52
1	B	12	DG	C8-N7	-7.21	1.26	1.30
1	A	5	DC	C2-O2	-7.03	1.18	1.24
1	B	10	DG	C8-N7	-6.90	1.26	1.30
1	A	1	DC	C3'-C2'	6.89	1.60	1.52
1	A	1	DC	O5'-C5'	6.80	1.59	1.42
1	B	7	DC	C5'-C4'	-6.74	1.44	1.51
1	A	3	DC	N3-C4	-6.63	1.29	1.33
1	A	5	DC	C2-N3	-6.44	1.30	1.35
1	B	10	DG	C4'-C3'	6.32	1.59	1.53
1	B	11	DC	C2'-C1'	6.28	1.58	1.52
1	A	1	DC	C4-N4	-6.26	1.28	1.33
1	A	1	DC	C3'-O3'	6.21	1.52	1.44
1	B	10	DG	N3-C4	-6.20	1.31	1.35
1	A	4	DG	O4'-C1'	6.15	1.49	1.42
1	B	12	DG	P-O5'	-6.15	1.53	1.59
1	A	6	DG	C5-C6	-6.10	1.36	1.42
1	B	9	DC	C4'-C3'	-6.07	1.46	1.52
1	B	10	DG	C2-N3	-6.04	1.27	1.32
1	B	8	DG	N3-C4	6.02	1.39	1.35
1	A	4	DG	C2-N2	5.99	1.40	1.34
1	A	3	DC	C3'-C2'	5.91	1.59	1.52

Continued on next page...

Continued from previous page...

Mol	Chain	Res	Type	Atoms	Z	Observed(Å)	Ideal(Å)
1	B	11	DC	C5-C6	5.85	1.39	1.34
1	A	2	DG	O5'-C5'	5.83	1.56	1.42
1	A	5	DC	C4'-C3'	-5.79	1.46	1.52
1	A	1	DC	N1-C6	-5.42	1.33	1.37
1	B	9	DC	N3-C4	-5.38	1.30	1.33
1	B	10	DG	O5'-C5'	5.37	1.55	1.42
1	A	4	DG	P-OP2	5.26	1.57	1.49
1	B	8	DG	C1'-N9	-5.19	1.40	1.47
1	B	9	DC	C4-N4	5.19	1.38	1.33
1	B	12	DG	C6-O6	5.15	1.28	1.24

All (130) bond angle outliers are listed below:

Mol	Chain	Res	Type	Atoms	Z	Observed(°)	Ideal(°)
1	A	4	DG	N1-C6-O6	-28.56	102.76	119.90
1	A	1	DC	N3-C4-C5	-26.14	111.44	121.90
1	B	11	DC	N3-C4-C5	-25.45	111.72	121.90
1	B	11	DC	C5-C6-N1	23.60	132.80	121.00
1	A	4	DG	C6-N1-C2	-22.66	111.50	125.10
1	A	2	DG	N9-C4-C5	-22.19	96.52	105.40
1	A	2	DG	C5-C6-N1	21.58	122.29	111.50
1	B	11	DC	C2-N3-C4	21.31	130.56	119.90
1	A	2	DG	C4-C5-C6	-20.56	106.46	118.80
1	A	2	DG	N3-C4-C5	20.45	138.82	128.60
1	B	10	DG	C4-C5-N7	-19.38	103.05	110.80
1	A	2	DG	C4-C5-N7	18.77	118.31	110.80
1	A	4	DG	C5-C6-N1	17.35	120.17	111.50
1	B	12	DG	N9-C4-C5	-17.31	98.47	105.40
1	B	12	DG	C4-C5-N7	17.29	117.72	110.80
1	A	1	DC	C4-C5-C6	16.80	125.80	117.40
1	A	6	DG	C2-N3-C4	16.45	120.13	111.90
1	B	8	DG	C5-C6-N1	-16.03	103.48	111.50
1	B	7	DC	C6-N1-C2	-15.72	114.01	120.30
1	A	3	DC	O4'-C1'-N1	-15.67	97.03	108.00
1	B	7	DC	N3-C4-C5	-15.06	115.88	121.90
1	A	3	DC	N3-C4-C5	14.22	127.59	121.90
1	A	4	DG	C5-C6-O6	14.08	137.05	128.60
1	A	5	DC	N3-C4-C5	13.99	127.50	121.90
1	B	8	DG	N1-C6-O6	13.87	128.22	119.90
1	B	11	DC	N1-C2-N3	-13.47	109.77	119.20
1	A	1	DC	C6-N1-C2	13.38	125.65	120.30
1	A	6	DG	N3-C4-C5	-13.37	121.92	128.60

Continued on next page...

Continued from previous page...

Mol	Chain	Res	Type	Atoms	Z	Observed(°)	Ideal(°)
1	B	7	DC	C2-N3-C4	12.87	126.33	119.90
1	A	2	DG	C5-C6-O6	-12.56	121.06	128.60
1	A	2	DG	O4'-C1'-N9	-12.42	99.31	108.00
1	B	12	DG	N3-C4-C5	12.41	134.80	128.60
1	B	8	DG	C6-N1-C2	12.29	132.47	125.10
1	A	5	DC	C5-C6-N1	-11.90	115.05	121.00
1	A	2	DG	C2-N3-C4	-11.88	105.96	111.90
1	B	10	DG	C6-C5-N7	11.87	137.52	130.40
1	A	2	DG	O4'-C1'-C2'	-11.80	96.46	105.90
1	A	2	DG	C3'-C2'-C1'	11.67	116.50	102.50
1	B	10	DG	C5-N7-C8	11.67	110.14	104.30
1	A	4	DG	N3-C4-C5	11.56	134.38	128.60
1	A	6	DG	N1-C2-N3	-11.46	117.02	123.90
1	A	4	DG	N1-C2-N3	11.36	130.71	123.90
1	A	3	DC	C4-C5-C6	-11.11	111.84	117.40
1	A	1	DC	C5-C4-N4	11.03	127.92	120.20
1	A	1	DC	C2-N3-C4	11.01	125.40	119.90
1	A	4	DG	C2-N3-C4	-10.97	106.41	111.90
1	B	10	DG	C4'-C3'-C2'	10.72	112.75	103.10
1	A	4	DG	N1-C2-N2	-10.70	106.57	116.20
1	B	7	DC	C4-C5-C6	10.60	122.70	117.40
1	B	11	DC	C4-C5-C6	-10.47	112.17	117.40
1	A	5	DC	O4'-C1'-N1	-10.40	100.72	108.00
1	A	3	DC	N1-C2-O2	-10.16	112.80	118.90
1	B	10	DG	C8-N9-C4	10.16	110.47	106.40
1	A	3	DC	C2-N3-C4	-10.08	114.86	119.90
1	B	11	DC	N1-C2-O2	9.92	124.85	118.90
1	A	4	DG	O4'-C1'-N9	-9.80	101.14	108.00
1	A	4	DG	O4'-C4'-C3'	-9.77	100.14	106.00
1	B	10	DG	O4'-C1'-C2'	9.56	113.55	105.90
1	A	4	DG	C4-C5-N7	9.20	114.48	110.80
1	B	12	DG	C6-C5-N7	-9.19	124.89	130.40
1	B	10	DG	N7-C8-N9	-9.13	108.53	113.10
1	A	1	DC	N1-C2-N3	-9.12	112.82	119.20
1	A	5	DC	C5-C4-N4	-8.98	113.92	120.20
1	B	11	DC	C4'-C3'-C2'	-8.85	95.13	103.10
1	B	8	DG	N7-C8-N9	-8.76	108.72	113.10
1	B	9	DC	C2-N3-C4	8.76	124.28	119.90
1	A	2	DG	C4'-C3'-C2'	-8.66	95.30	103.10
1	B	10	DG	O4'-C1'-N9	-8.61	101.97	108.00
1	A	6	DG	N9-C4-C5	8.59	108.84	105.40
1	B	7	DC	C5-C4-N4	8.59	126.21	120.20

Continued on next page...

Continued from previous page...

Mol	Chain	Res	Type	Atoms	Z	Observed(°)	Ideal(°)
1	B	10	DG	N1-C6-O6	8.55	125.03	119.90
1	B	10	DG	C8-N9-C1'	-8.16	116.39	127.00
1	B	11	DC	C5-C4-N4	8.14	125.90	120.20
1	A	2	DG	C6-C5-N7	8.04	135.22	130.40
1	A	2	DG	O4'-C4'-C3'	-7.95	101.23	106.00
1	A	2	DG	N1-C2-N2	7.90	123.31	116.20
1	B	12	DG	C5-N7-C8	-7.81	100.39	104.30
1	A	2	DG	N3-C2-N2	-7.80	114.44	119.90
1	A	5	DC	C6-N1-C2	7.73	123.39	120.30
1	B	10	DG	C3'-C2'-C1'	-7.65	93.32	102.50
1	B	9	DC	C3'-C2'-C1'	-7.61	93.37	102.50
1	A	4	DG	C4-N9-C1'	7.57	136.34	126.50
1	A	1	DC	N1-C2-O2	7.57	123.44	118.90
1	B	12	DG	C2-N3-C4	-7.38	108.21	111.90
1	A	3	DC	N1-C2-N3	7.28	124.30	119.20
1	B	9	DC	O4'-C1'-N1	-7.24	102.94	108.00
1	B	10	DG	C2-N3-C4	7.21	115.50	111.90
1	B	7	DC	O4'-C1'-N1	-7.12	103.02	108.00
1	B	9	DC	O4'-C4'-C3'	7.05	110.23	106.00
1	A	1	DC	C5-C6-N1	-7.04	117.48	121.00
1	B	10	DG	N3-C4-C5	-7.04	125.08	128.60
1	A	4	DG	N3-C4-N9	-6.98	121.81	126.00
1	A	1	DC	O4'-C1'-N1	-6.93	103.15	108.00
1	B	12	DG	N7-C8-N9	6.85	116.53	113.10
1	A	4	DG	C8-N9-C1'	-6.80	118.16	127.00
1	A	2	DG	C8-N9-C1'	-6.71	118.27	127.00
1	A	5	DC	C4-C5-C6	-6.67	114.07	117.40
1	B	11	DC	C1'-O4'-C4'	6.66	116.76	110.10
1	A	1	DC	C2-N1-C1'	-6.58	111.56	118.80
1	B	8	DG	N9-C4-C5	6.56	108.02	105.40
1	B	10	DG	C5-C6-O6	-6.55	124.67	128.60
1	B	8	DG	O4'-C1'-C2'	6.45	111.06	105.90
1	A	6	DG	N3-C2-N2	6.43	124.40	119.90
1	B	10	DG	N3-C2-N2	6.25	124.27	119.90
1	B	8	DG	C8-N9-C1'	-6.20	118.94	127.00
1	B	11	DC	N3-C4-N4	6.19	122.33	118.00
1	B	11	DC	C6-N1-C2	6.18	122.77	120.30
1	A	4	DG	C4'-C3'-C2'	6.12	108.61	103.10
1	A	6	DG	C5-N7-C8	-6.12	101.24	104.30
1	A	6	DG	C4-C5-N7	-6.11	108.36	110.80
1	B	7	DC	O4'-C4'-C3'	6.11	109.66	106.00
1	A	6	DG	C5-C6-O6	-6.05	124.97	128.60

Continued on next page...

Continued from previous page...

Mol	Chain	Res	Type	Atoms	Z	Observed(°)	Ideal(°)
1	B	7	DC	C6-N1-C1'	5.96	127.95	120.80
1	A	4	DG	C5-N7-C8	-5.88	101.36	104.30
1	A	2	DG	C5'-C4'-C3'	-5.88	103.52	114.10
1	A	5	DC	C5'-C4'-C3'	5.87	124.67	114.10
1	A	2	DG	N1-C6-O6	-5.69	116.49	119.90
1	B	12	DG	C5-C6-N1	-5.51	108.74	111.50
1	A	2	DG	C4-N9-C1'	5.49	133.63	126.50
1	A	3	DC	O4'-C4'-C3'	5.47	109.28	106.00
1	A	3	DC	C1'-O4'-C4'	-5.43	104.67	110.10
1	A	6	DG	N3-C4-N9	5.39	129.24	126.00
1	A	4	DG	N9-C4-C5	-5.38	103.25	105.40
1	B	7	DC	C3'-C2'-C1'	-5.33	96.10	102.50
1	B	8	DG	C4-N9-C1'	5.30	133.38	126.50
1	A	6	DG	C5-C6-N1	5.29	114.14	111.50
1	A	6	DG	O4'-C1'-N9	5.09	111.56	108.00
1	A	6	DG	C4'-C3'-C2'	5.05	107.64	103.10
1	A	5	DC	N3-C2-O2	5.03	125.42	121.90
1	A	5	DC	O4'-C1'-C2'	-5.01	101.89	105.90

There are no chirality outliers.

All (1) planarity outliers are listed below:

Mol	Chain	Res	Type	Group
1	B	10	DG	Sidechain

5.2 Too-close contacts [\(i\)](#)

In the following table, the Non-H and H(model) columns list the number of non-hydrogen atoms and hydrogen atoms in the chain respectively. The H(added) column lists the number of hydrogen atoms added and optimized by MolProbity. The Clashes column lists the number of clashes within the asymmetric unit, whereas Symm-Clashes lists symmetry-related clashes.

Mol	Chain	Non-H	H(model)	H(added)	Clashes	Symm-Clashes
1	A	120	0	66	5	1
1	B	120	0	64	7	0
2	A	1	0	0	0	0
3	A	10	0	18	7	0
3	B	10	0	18	13	1
4	A	56	0	0	5	5
4	B	32	0	0	13	3
All	All	349	0	166	28	6

The all-atom clashscore is defined as the number of clashes found per 1000 atoms (including hydrogen atoms). The all-atom clashscore for this structure is 66.

All (28) close contacts within the same asymmetric unit are listed below, sorted by their clash magnitude.

Atom-1	Atom-2	Interatomic distance (Å)	Clash overlap (Å)
1:B:11:DC:C3'	1:B:11:DC:C4'	1.82	1.54
1:A:2:DG:C1'	1:A:2:DG:O4'	1.65	1.31
3:A:13:104:H52	4:B:15:HOH:O	1.32	1.29
1:A:2:DG:H2''	4:A:87:HOH:O	1.07	1.23
3:A:13:104:C5	4:B:15:HOH:O	1.84	1.12
3:A:13:104:N1	4:A:81:HOH:O	2.07	0.86
1:B:11:DC:C3'	1:B:11:DC:C5'	2.60	0.80
3:B:14:104:C2	4:B:20:HOH:O	2.29	0.79
3:B:14:104:N1	4:B:20:HOH:O	2.16	0.78
3:B:14:104:H62	4:B:25:HOH:O	1.83	0.78
3:B:14:104:N1	4:B:24:HOH:O	2.22	0.73
3:A:13:104:H51	4:B:15:HOH:O	1.69	0.72
3:A:13:104:H22	4:A:72:HOH:O	1.89	0.72
3:B:14:104:N7	4:B:78:HOH:O	2.26	0.69
3:B:14:104:N1	4:B:69:HOH:O	2.25	0.64
1:B:8:DG:H2''	3:B:14:104:H52	1.81	0.63
3:B:14:104:C2	4:B:24:HOH:O	2.50	0.59
1:A:3:DC:H1'	3:A:13:104:H21	1.89	0.53
1:A:2:DG:O4'	1:A:2:DG:N9	2.35	0.52
1:A:2:DG:C2'	4:A:87:HOH:O	1.94	0.48
1:B:11:DC:C4'	1:B:11:DC:O3'	2.53	0.48
3:A:13:104:C3	4:A:72:HOH:O	2.61	0.48
3:B:14:104:C6	4:B:78:HOH:O	2.62	0.47
1:B:8:DG:H1'	3:B:14:104:H32	1.97	0.47
3:B:14:104:H22	4:B:24:HOH:O	2.16	0.45
3:B:14:104:H22	4:B:20:HOH:O	2.09	0.43
1:B:12:DG:N3	1:B:12:DG:H2'	2.34	0.42
1:B:8:DG:H2''	3:B:14:104:H32	2.02	0.41

All (6) symmetry-related close contacts are listed below. The label for Atom-2 includes the symmetry operator and encoded unit-cell translations to be applied.

Atom-1	Atom-2	Interatomic distance (Å)	Clash overlap (Å)
4:A:99:HOH:O	4:B:94:HOH:O[3_655]	1.46	0.74
4:A:99:HOH:O	4:B:100:HOH:O[3_655]	1.53	0.67
4:A:35:HOH:O	4:A:75:HOH:O[4_465]	1.75	0.45

Continued on next page...

Continued from previous page...

Atom-1	Atom-2	Interatomic distance (Å)	Clash overlap (Å)
4:A:33:HOH:O	4:B:32:HOH:O[2_564]	1.86	0.34
4:A:59:HOH:O	4:A:64:HOH:O[4_565]	1.88	0.32
1:A:6:DG:N7	3:B:14:104:N1[3_655]	2.13	0.07

5.3 Torsion angles [i](#)

5.3.1 Protein backbone [i](#)

There are no protein molecules in this entry.

5.3.2 Protein sidechains [i](#)

There are no protein molecules in this entry.

5.3.3 RNA [i](#)

There are no RNA molecules in this entry.

5.4 Non-standard residues in protein, DNA, RNA chains [i](#)

There are no non-standard protein/DNA/RNA residues in this entry.

5.5 Carbohydrates [i](#)

There are no monosaccharides in this entry.

5.6 Ligand geometry [i](#)

Of 3 ligands modelled in this entry, 1 is monoatomic - leaving 2 for Mogul analysis.

In the following table, the Counts columns list the number of bonds (or angles) for which Mogul statistics could be retrieved, the number of bonds (or angles) that are observed in the model and the number of bonds (or angles) that are defined in the Chemical Component Dictionary. The Link column lists molecule types, if any, to which the group is linked. The Z score for a bond length (or angle) is the number of standard deviations the observed value is removed from the expected value. A bond length (or angle) with $|Z| > 2$ is considered an outlier worth inspection. RMSZ is the root-mean-square of all Z scores of the bond lengths (or angles).

Mol	Type	Chain	Res	Link	Bond lengths			Bond angles		
					Counts	RMSZ	# Z > 2	Counts	RMSZ	# Z > 2
3	104	A	13	-	9,9,9	2.49	3 (33%)	8,8,8	6.08	6 (75%)
3	104	B	14	-	9,9,9	0.93	0	8,8,8	3.64	3 (37%)

In the following table, the Chirals column lists the number of chiral outliers, the number of chiral centers analysed, the number of these observed in the model and the number defined in the Chemical Component Dictionary. Similar counts are reported in the Torsion and Rings columns. '-' means no outliers of that kind were identified.

Mol	Type	Chain	Res	Link	Chirals	Torsions	Rings
3	104	A	13	-	-	3/7/7/7	-
3	104	B	14	-	-	5/7/7/7	-

All (3) bond length outliers are listed below:

Mol	Chain	Res	Type	Atoms	Z	Observed(Å)	Ideal(Å)
3	A	13	104	C8-N7	6.03	1.67	1.46
3	A	13	104	C6-N7	2.54	1.55	1.46
3	A	13	104	C5-N4	2.42	1.55	1.46

All (9) bond angle outliers are listed below:

Mol	Chain	Res	Type	Atoms	Z	Observed(°)	Ideal(°)
3	A	13	104	C8-N7-C6	11.09	165.77	113.45
3	A	13	104	C5-N4-C3	10.26	161.85	113.45
3	B	14	104	C8-N7-C6	9.49	158.21	113.45
3	A	13	104	C6-C5-N4	5.50	141.63	112.01
3	A	13	104	C5-C6-N7	-4.57	87.39	112.01
3	A	13	104	C3-C2-N1	3.31	138.85	114.13
3	B	14	104	C2-C3-N4	2.96	134.43	112.04
3	B	14	104	C9-C8-N7	2.11	127.99	112.04
3	A	13	104	C9-C8-N7	2.06	127.61	112.04

There are no chirality outliers.

All (8) torsion outliers are listed below:

Mol	Chain	Res	Type	Atoms
3	B	14	104	N4-C5-C6-N7
3	A	13	104	C5-C6-N7-C8
3	B	14	104	C6-C5-N4-C3
3	B	14	104	C9-C8-N7-C6

Continued on next page...

Continued from previous page...

Mol	Chain	Res	Type	Atoms
3	A	13	104	C2-C3-N4-C5
3	A	13	104	N7-C8-C9-N10
3	B	14	104	N1-C2-C3-N4
3	B	14	104	C5-C6-N7-C8

There are no ring outliers.

2 monomers are involved in 21 short contacts:

Mol	Chain	Res	Type	Clashes	Symm-Clashes
3	A	13	104	7	0
3	B	14	104	13	1

5.7 Other polymers [i](#)

There are no such residues in this entry.

5.8 Polymer linkage issues [i](#)

There are no chain breaks in this entry.

6 Fit of model and data [i](#)

6.1 Protein, DNA and RNA chains [i](#)

Unable to reproduce the depositors R factor - this section is therefore empty.

6.2 Non-standard residues in protein, DNA, RNA chains [i](#)

Unable to reproduce the depositors R factor - this section is therefore empty.

6.3 Carbohydrates [i](#)

Unable to reproduce the depositors R factor - this section is therefore empty.

6.4 Ligands [i](#)

Unable to reproduce the depositors R factor - this section is therefore empty.

6.5 Other polymers [i](#)

Unable to reproduce the depositors R factor - this section is therefore empty.