



## Full wwPDB EM Validation Report ⓘ

Jun 28, 2023 – 10:10 AM EDT

PDB ID : 8D9W  
EMDB ID : EMD-27186  
Title : beta-Arf1 homodimeric interface within AP-1, Arf1, Nef, MHC-I lattice on narrow tubes  
Authors : Hooy, R.H.; Hurley, J.H.  
Deposited on : 2022-06-11  
Resolution : 9.30 Å(reported)

This is a Full wwPDB EM Validation Report for a publicly released PDB entry.

We welcome your comments at [validation@mail.wwpdb.org](mailto:validation@mail.wwpdb.org)

A user guide is available at

<https://www.wwpdb.org/validation/2017/EMValidationReportHelp>

with specific help available everywhere you see the ⓘ symbol.

The types of validation reports are described at

<http://www.wwpdb.org/validation/2017/FAQs#types>.

---

The following versions of software and data (see [references ⓘ](#)) were used in the production of this report:

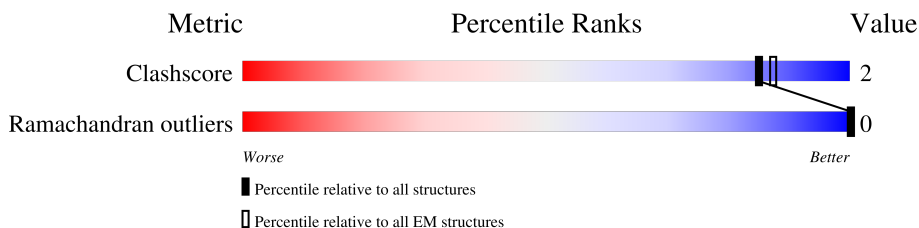
EMDB validation analysis : 0.0.1.dev50  
Mogul : 1.8.5 (274361), CSD as541be (2020)  
MolProbity : 4.02b-467  
buster-report : 1.1.7 (2018)  
Percentile statistics : 20191225.v01 (using entries in the PDB archive December 25th 2019)  
MapQ : 1.9.9  
Ideal geometry (proteins) : Engh & Huber (2001)  
Ideal geometry (DNA, RNA) : Parkinson et al. (1996)  
Validation Pipeline (wwPDB-VP) : 2.33

# 1 Overall quality at a glance i

The following experimental techniques were used to determine the structure:  
*ELECTRON MICROSCOPY*

The reported resolution of this entry is 9.30 Å.

Percentile scores (ranging between 0-100) for global validation metrics of the entry are shown in the following graphic. The table shows the number of entries on which the scores are based.






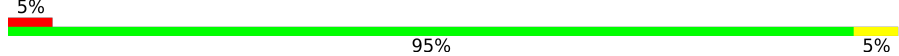



Metric	Whole archive (#Entries)	EM structures (#Entries)
Clashscore	158937	4297
Ramachandran outliers	154571	4023

The table below summarises the geometric issues observed across the polymeric chains and their fit to the map. The red, orange, yellow and green segments of the bar indicate the fraction of residues that contain outliers for  $\geq 3$ , 2, 1 and 0 types of geometric quality criteria respectively. A grey segment represents the fraction of residues that are not modelled. The numeric value for each fraction is indicated below the corresponding segment, with a dot representing fractions  $\leq 5\%$ . The upper red bar (where present) indicates the fraction of residues that have poor fit to the EM map (all-atom inclusion  $< 40\%$ ). The numeric value is given above the bar.

Mol	Chain	Length	Quality of chain
1	N	213	7% 64% 36%
1	U	213	5% 95%
1	V	213	5% 95%
1	d	213	7% 64% 36%
2	Y	44	23% 41% 59%
2	j	44	27% 41% 59%
3	A	949	27% 73%
3	B	949	27% 73%
3	D	949	28% 72%

*Continued on next page...*

*Continued from previous page...*

Mol	Chain	Length	Quality of chain
3	E	949	 30% 70%
4	M	423	 9% 67% 29%
4	X	423	 34% 65%
4	Z	423	 34% 65%
4	a	423	 11% 76% 24%
5	F	180	 5% 95% 5%
5	I	180	 96% 5%
6	K	601	 39% 61%
6	O	601	 44% 56%
7	e	154	 9% 82% 18%
7	f	154	 10% 82% 18%

## 2 Entry composition i

There are 9 unique types of molecules in this entry. The entry contains 13746 atoms, of which 0 are hydrogens and 0 are deuteriums.

In the tables below, the AltConf column contains the number of residues with at least one atom in alternate conformation and the Trace column contains the number of residues modelled with at most 2 atoms.

- Molecule 1 is a protein called Protein Nef.

Mol	Chain	Residues	Atoms				AltConf	Trace
			Total	C	N	O		
1	N	137	548	274	137	137	0	0
1	U	10	40	20	10	10	0	0
1	V	10	40	20	10	10	0	0
1	d	137	548	274	137	137	0	0

There are 28 discrepancies between the modelled and reference sequences:

Chain	Residue	Modelled	Actual	Comment	Reference
N	207	GLY	-	expression tag	UNP Q90VU7
N	208	HIS	-	expression tag	UNP Q90VU7
N	209	HIS	-	expression tag	UNP Q90VU7
N	210	HIS	-	expression tag	UNP Q90VU7
N	211	HIS	-	expression tag	UNP Q90VU7
N	212	HIS	-	expression tag	UNP Q90VU7
N	213	HIS	-	expression tag	UNP Q90VU7
U	207	GLY	-	expression tag	UNP Q90VU7
U	208	HIS	-	expression tag	UNP Q90VU7
U	209	HIS	-	expression tag	UNP Q90VU7
U	210	HIS	-	expression tag	UNP Q90VU7
U	211	HIS	-	expression tag	UNP Q90VU7
U	212	HIS	-	expression tag	UNP Q90VU7
U	213	HIS	-	expression tag	UNP Q90VU7
V	207	GLY	-	expression tag	UNP Q90VU7
V	208	HIS	-	expression tag	UNP Q90VU7
V	209	HIS	-	expression tag	UNP Q90VU7
V	210	HIS	-	expression tag	UNP Q90VU7
V	211	HIS	-	expression tag	UNP Q90VU7
V	212	HIS	-	expression tag	UNP Q90VU7
V	213	HIS	-	expression tag	UNP Q90VU7
d	207	GLY	-	expression tag	UNP Q90VU7

*Continued on next page...*

*Continued from previous page...*

Chain	Residue	Modelled	Actual	Comment	Reference
d	208	HIS	-	expression tag	UNP Q90VU7
d	209	HIS	-	expression tag	UNP Q90VU7
d	210	HIS	-	expression tag	UNP Q90VU7
d	211	HIS	-	expression tag	UNP Q90VU7
d	212	HIS	-	expression tag	UNP Q90VU7
d	213	HIS	-	expression tag	UNP Q90VU7

- Molecule 2 is a protein called HLA class I histocompatibility antigen, A alpha chain.

Mol	Chain	Residues	Atoms				AltConf	Trace
2	Y	18	Total	C	N	O	0	0
			72	36	18	18		
2	j	18	Total	C	N	O	0	0
			72	36	18	18		

There are 32 discrepancies between the modelled and reference sequences:

Chain	Residue	Modelled	Actual	Comment	Reference
Y	333	GLY	-	expression tag	UNP P04439
Y	334	ALA	-	expression tag	UNP P04439
Y	335	MET	-	expression tag	UNP P04439
Y	336	GLY	-	expression tag	UNP P04439
Y	337	SER	-	expression tag	UNP P04439
Y	338	CYS	-	expression tag	UNP P04439
Y	350	SER	THR	engineered mutation	UNP P04439
Y	354	GLY	SER	engineered mutation	UNP P04439
Y	360	SER	GLY	engineered mutation	UNP P04439
Y	368	ALA	CYS	engineered mutation	UNP P04439
Y	371	HIS	-	expression tag	UNP P04439
Y	372	HIS	-	expression tag	UNP P04439
Y	373	HIS	-	expression tag	UNP P04439
Y	374	HIS	-	expression tag	UNP P04439
Y	375	HIS	-	expression tag	UNP P04439
Y	376	HIS	-	expression tag	UNP P04439
j	333	GLY	-	expression tag	UNP P04439
j	334	ALA	-	expression tag	UNP P04439
j	335	MET	-	expression tag	UNP P04439
j	336	GLY	-	expression tag	UNP P04439
j	337	SER	-	expression tag	UNP P04439
j	338	CYS	-	expression tag	UNP P04439
j	350	SER	THR	engineered mutation	UNP P04439
j	354	GLY	SER	engineered mutation	UNP P04439

*Continued on next page...*

*Continued from previous page...*

Chain	Residue	Modelled	Actual	Comment	Reference
j	360	SER	GLY	engineered mutation	UNP P04439
j	368	ALA	CYS	engineered mutation	UNP P04439
j	371	HIS	-	expression tag	UNP P04439
j	372	HIS	-	expression tag	UNP P04439
j	373	HIS	-	expression tag	UNP P04439
j	374	HIS	-	expression tag	UNP P04439
j	375	HIS	-	expression tag	UNP P04439
j	376	HIS	-	expression tag	UNP P04439

- Molecule 3 is a protein called AP-1 complex subunit beta-1.

Mol	Chain	Residues	Atoms				AltConf	Trace
			Total	C	N	O		
3	B	259	1036	518	259	259	0	0
3	A	260	1040	520	260	260	0	0
3	D	261	1044	522	261	261	0	0
3	E	282	1128	564	282	282	0	0

There are 8 discrepancies between the modelled and reference sequences:

Chain	Residue	Modelled	Actual	Comment	Reference
B	359	ARG	LYS	engineered mutation	UNP Q10567
B	476	LYS	GLU	engineered mutation	UNP Q10567
A	359	ARG	LYS	engineered mutation	UNP Q10567
A	476	LYS	GLU	engineered mutation	UNP Q10567
D	359	ARG	LYS	engineered mutation	UNP Q10567
D	476	LYS	GLU	engineered mutation	UNP Q10567
E	359	ARG	LYS	engineered mutation	UNP Q10567
E	476	LYS	GLU	engineered mutation	UNP Q10567

- Molecule 4 is a protein called AP-1 complex subunit mu-1.

Mol	Chain	Residues	Atoms				AltConf	Trace
			Total	C	N	O		
4	M	301	1204	602	301	301	0	0
4	X	147	588	294	147	147	0	0
4	Z	147	588	294	147	147	0	0

*Continued on next page...*

*Continued from previous page...*

Mol	Chain	Residues	Atoms				AltConf	Trace
4	a	322	Total	C	N	O	0	0
			1288	644	322	322		

- Molecule 5 is a protein called ADP-ribosylation factor 1.

Mol	Chain	Residues	Atoms				AltConf	Trace
5	F	180	Total	C	N	O	0	0
			720	360	180	180		
5	I	180	Total	C	N	O	0	0
			720	360	180	180		

- Molecule 6 is a protein called AP-1 complex subunit gamma-1.

Mol	Chain	Residues	Atoms				AltConf	Trace
6	K	235	Total	C	N	O	0	0
			940	470	235	235		
6	O	262	Total	C	N	O	0	0
			1048	524	262	262		

There are 12 discrepancies between the modelled and reference sequences:

Chain	Residue	Modelled	Actual	Comment	Reference
K	596	GLU	-	expression tag	UNP P22892
K	597	ASN	-	expression tag	UNP P22892
K	598	LEU	-	expression tag	UNP P22892
K	599	TYR	-	expression tag	UNP P22892
K	600	PHE	-	expression tag	UNP P22892
K	601	GLN	-	expression tag	UNP P22892
O	596	GLU	-	expression tag	UNP P22892
O	597	ASN	-	expression tag	UNP P22892
O	598	LEU	-	expression tag	UNP P22892
O	599	TYR	-	expression tag	UNP P22892
O	600	PHE	-	expression tag	UNP P22892
O	601	GLN	-	expression tag	UNP P22892

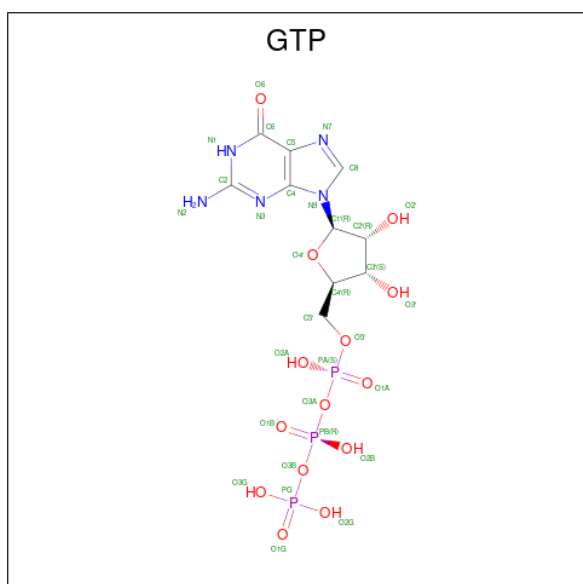
- Molecule 7 is a protein called AP-1 complex subunit sigma-3.

Mol	Chain	Residues	Atoms				AltConf	Trace
7	e	127	Total	C	N	O	0	0
			508	254	127	127		
7	f	127	Total	C	N	O	0	0
			508	254	127	127		

- Molecule 8 is MAGNESIUM ION (three-letter code: MG) (formula: Mg) (labeled as "Ligand of Interest" by depositor).

Mol	Chain	Residues	Atoms	AltConf
8	F	1	Total Mg 1 1	0
8	I	1	Total Mg 1 1	0

- Molecule 9 is GUANOSINE-5'-TRIPHOSPHATE (three-letter code: GTP) (formula: C<sub>10</sub>H<sub>16</sub>N<sub>5</sub>O<sub>14</sub>P<sub>3</sub>) (labeled as "Ligand of Interest" by depositor).



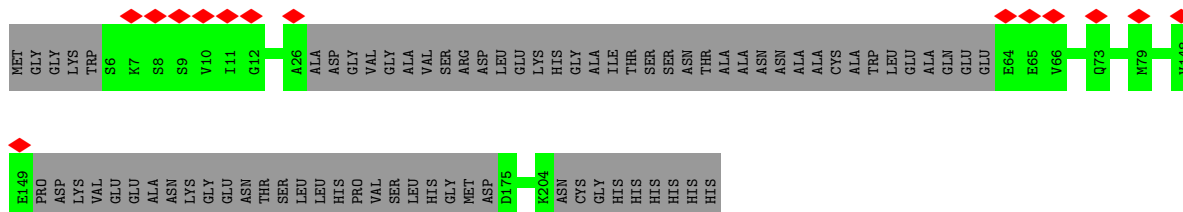
Mol	Chain	Residues	Atoms	AltConf
9	F	1	Total C N O P 32 10 5 14 3	0
9	I	1	Total C N O P 32 10 5 14 3	0





ARG LEU LEU ALA PHE HIS HIS VAL VAL ARG ARG LEU LEU HIS HIS PRO PRO GLU TYR PHE LEU LYS LYS ASN ASN CYS GLY HIS HIS HIS HIS HIS HIS HIS HIS

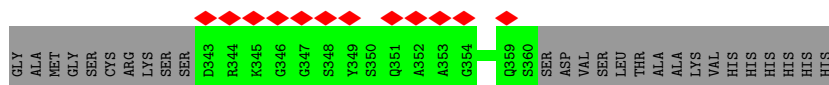
Molecule 1: Protein Nef



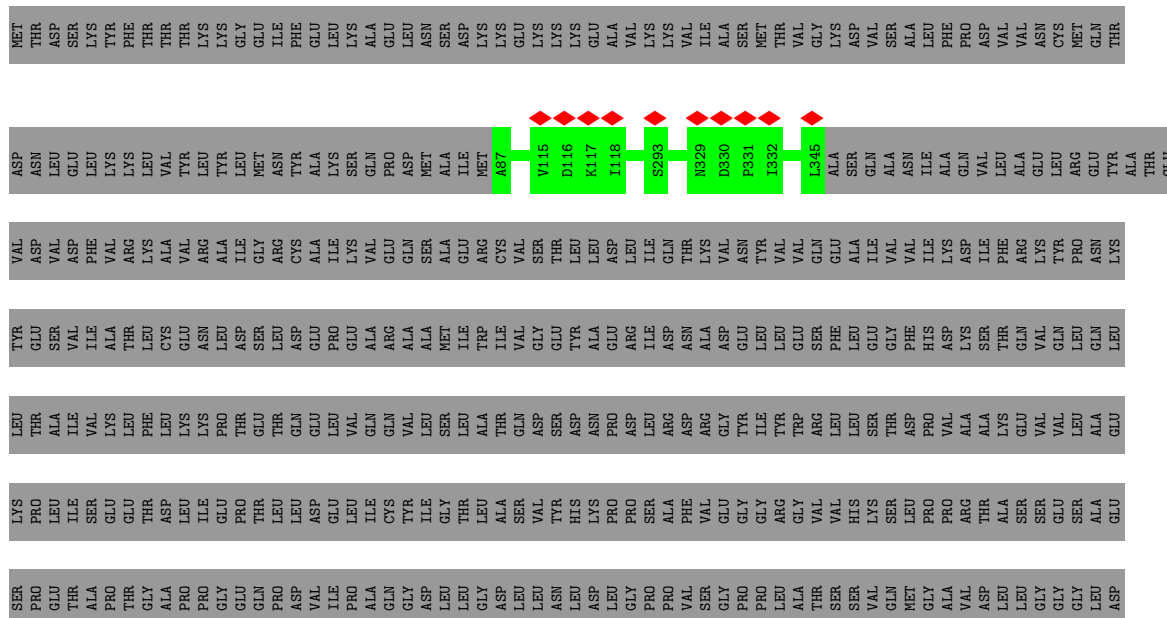
Molecule 2: HLA class I histocompatibility antigen, A alpha chain



Molecule 2: HLA class I histocompatibility antigen, A alpha chain



Molecule 3: AP-1 complex subunit beta-1






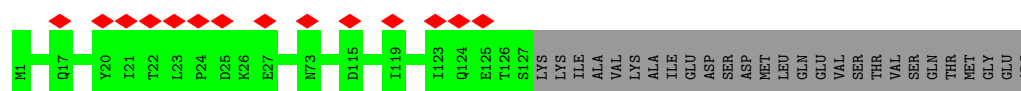







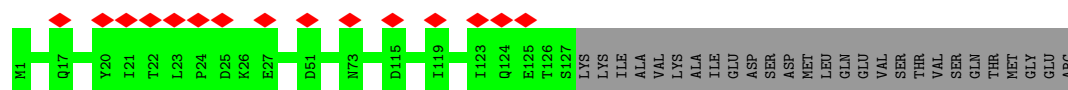


Chain e:  9% 82% 18%



- Molecule 7: AP-1 complex subunit sigma-3

Chain f:  10% 82% 18%





## 4 Experimental information

Property	Value	Source
EM reconstruction method	SUBTOMOGRAM AVERAGING	Depositor
Imposed symmetry	POINT, C2	Depositor
Number of subtomograms used	8174	Depositor
Resolution determination method	FSC 0.143 CUT-OFF	Depositor
CTF correction method	PHASE FLIPPING ONLY	Depositor
Microscope	TFS KRIOS	Depositor
Voltage (kV)	300	Depositor
Electron dose ( $e^-/\text{\AA}^2$ )	120	Depositor
Minimum defocus (nm)	1500	Depositor
Maximum defocus (nm)	4500	Depositor
Magnification	42000	Depositor
Image detector	GATAN K3 BIOQUANTUM (6k x 4k)	Depositor
Maximum map value	28.533	Depositor
Minimum map value	-17.361	Depositor
Average map value	0.050	Depositor
Map value standard deviation	1.733	Depositor
Recommended contour level	4.0	Depositor
Map size ( $\text{\AA}$ )	268.8, 268.8, 268.8	wwPDB
Map dimensions	128, 128, 128	wwPDB
Map angles ( $^\circ$ )	90.0, 90.0, 90.0	wwPDB
Pixel spacing ( $\text{\AA}$ )	2.1, 2.1, 2.1	Depositor

## 5 Model quality

### 5.1 Standard geometry

Bond lengths and bond angles in the following residue types are not validated in this section: GTP, MG

The Z score for a bond length (or angle) is the number of standard deviations the observed value is removed from the expected value. A bond length (or angle) with  $|Z| > 5$  is considered an outlier worth inspection. RMSZ is the root-mean-square of all Z scores of the bond lengths (or angles).

Mol	Chain	Bond lengths		Bond angles	
		RMSZ	# Z  >5	RMSZ	# Z  >5
1	N	0.25	0/545	0.44	0/676
1	U	0.25	0/39	0.47	0/47
1	V	0.25	0/39	0.47	0/47
1	d	0.25	0/545	0.44	0/676
2	Y	0.24	0/71	0.47	0/87
2	j	0.24	0/71	0.48	0/87
3	A	0.28	0/1039	0.40	0/1297
3	B	0.24	0/1035	0.40	0/1292
3	D	0.29	0/1042	0.40	0/1299
3	E	0.25	0/1126	0.39	0/1404
4	M	0.25	0/1197	0.51	0/1484
4	X	0.30	0/586	0.49	0/729
4	Z	0.30	0/586	0.49	0/729
4	a	0.25	0/1280	0.52	0/1586
5	F	0.27	0/719	0.47	0/897
5	I	0.27	0/719	0.47	0/897
6	K	0.23	0/939	0.39	0/1172
6	O	0.22	0/1047	0.40	0/1307
7	e	0.24	0/507	0.46	0/632
7	f	0.24	0/507	0.46	0/632
All	All	0.26	0/13639	0.44	0/16977

There are no bond length outliers.

There are no bond angle outliers.

There are no chirality outliers.

There are no planarity outliers.

## 5.2 Too-close contacts [i](#)

In the following table, the Non-H and H(model) columns list the number of non-hydrogen atoms and hydrogen atoms in the chain respectively. The H(added) column lists the number of hydrogen atoms added and optimized by MolProbity. The Clashes column lists the number of clashes within the asymmetric unit, whereas Symm-Clashes lists symmetry-related clashes.

Mol	Chain	Non-H	H(model)	H(added)	Clashes	Symm-Clashes
1	N	548	0	139	0	0
1	U	40	0	10	0	0
1	V	40	0	10	0	0
1	d	548	0	139	0	0
2	Y	72	0	23	0	0
2	j	72	0	23	0	0
3	A	1040	0	256	0	0
3	B	1036	0	252	0	0
3	D	1044	0	255	0	0
3	E	1128	0	274	0	0
4	M	1204	0	314	8	0
4	X	588	0	151	2	0
4	Z	588	0	151	1	0
4	a	1288	0	339	0	0
5	F	720	0	204	6	0
5	I	720	0	204	6	0
6	K	940	0	251	0	0
6	O	1048	0	280	0	0
7	e	508	0	138	0	0
7	f	508	0	138	0	0
8	F	1	0	0	0	0
8	I	1	0	0	0	0
9	F	32	0	12	3	0
9	I	32	0	12	4	0
All	All	13746	0	3575	23	0

The all-atom clashscore is defined as the number of clashes found per 1000 atoms (including hydrogen atoms). The all-atom clashscore for this structure is 2.

All (23) close contacts within the same asymmetric unit are listed below, sorted by their clash magnitude.

Atom-1	Atom-2	Interatomic distance (Å)	Clash overlap (Å)
4:M:276:LEU:O	4:M:300:GLN:N	2.38	0.56
4:M:182:LEU:N	4:M:191:ARG:O	2.41	0.53
5:F:52:ASN:O	5:F:67:ASP:N	2.40	0.52

*Continued on next page...*

Continued from previous page...

Atom-1	Atom-2	Interatomic distance (Å)	Clash overlap (Å)
5:I:22:MET:O	5:I:68:VAL:N	2.43	0.52
5:I:52:ASN:O	5:I:67:ASP:N	2.41	0.52
4:X:8:VAL:O	4:X:16:LEU:N	2.43	0.52
4:Z:8:VAL:O	4:Z:16:LEU:N	2.43	0.52
4:M:196:GLY:N	4:M:267:TYR:O	2.46	0.49
5:F:30:LYS:N	9:F:202:GTP:O2B	2.46	0.49
5:F:22:MET:O	5:F:68:VAL:N	2.44	0.49
5:I:30:LYS:N	9:I:1001:GTP:O2B	2.46	0.48
5:I:29:GLY:H	9:I:1001:GTP:H5''	1.78	0.48
5:F:29:GLY:H	9:F:202:GTP:H5''	1.79	0.47
4:M:311:GLU:O	4:M:379:LYS:N	2.47	0.46
5:I:27:ALA:H	9:I:1001:GTP:PG	2.40	0.45
5:F:27:ALA:H	9:F:202:GTP:PG	2.41	0.43
4:M:376:ILE:O	4:M:420:LEU:N	2.46	0.43
4:M:239:HIS:N	4:M:264:LEU:O	2.52	0.42
4:M:177:GLU:N	4:M:412:ILE:O	2.42	0.42
4:X:52:HIS:N	4:X:55:VAL:O	2.48	0.42
5:F:56:VAL:O	5:F:63:PHE:N	2.45	0.41
4:M:382:ILE:N	4:M:413:THR:O	2.54	0.41
5:I:32:THR:N	9:I:1001:GTP:O1A	2.53	0.40

There are no symmetry-related clashes.

## 5.3 Torsion angles [i](#)

### 5.3.1 Protein backbone [i](#)

In the following table, the Percentiles column shows the percent Ramachandran outliers of the chain as a percentile score with respect to all PDB entries followed by that with respect to all EM entries.

The Analysed column shows the number of residues for which the backbone conformation was analysed, and the total number of residues.

Mol	Chain	Analysed	Favoured	Allowed	Outliers	Percentiles	
1	N	131/213 (62%)	130 (99%)	1 (1%)	0	100	100
1	U	8/213 (4%)	8 (100%)	0	0	100	100
1	V	8/213 (4%)	8 (100%)	0	0	100	100
1	d	131/213 (62%)	130 (99%)	1 (1%)	0	100	100

Continued on next page...

Continued from previous page...

Mol	Chain	Analysed	Favoured	Allowed	Outliers	Percentiles	
2	Y	16/44 (36%)	16 (100%)	0	0	100	100
2	j	16/44 (36%)	16 (100%)	0	0	100	100
3	A	258/949 (27%)	253 (98%)	5 (2%)	0	100	100
3	B	257/949 (27%)	251 (98%)	6 (2%)	0	100	100
3	D	257/949 (27%)	251 (98%)	6 (2%)	0	100	100
3	E	278/949 (29%)	272 (98%)	6 (2%)	0	100	100
4	M	287/423 (68%)	283 (99%)	4 (1%)	0	100	100
4	X	143/423 (34%)	142 (99%)	1 (1%)	0	100	100
4	Z	143/423 (34%)	142 (99%)	1 (1%)	0	100	100
4	a	306/423 (72%)	302 (99%)	4 (1%)	0	100	100
5	F	178/180 (99%)	176 (99%)	2 (1%)	0	100	100
5	I	178/180 (99%)	176 (99%)	2 (1%)	0	100	100
6	K	233/601 (39%)	231 (99%)	2 (1%)	0	100	100
6	O	260/601 (43%)	257 (99%)	3 (1%)	0	100	100
7	e	125/154 (81%)	122 (98%)	3 (2%)	0	100	100
7	f	125/154 (81%)	122 (98%)	3 (2%)	0	100	100
All	All	3338/8298 (40%)	3288 (98%)	50 (2%)	0	100	100

There are no Ramachandran outliers to report.

### 5.3.2 Protein sidechains [i](#)

There are no protein residues with a non-rotameric sidechain to report in this entry.

### 5.3.3 RNA [i](#)

There are no RNA molecules in this entry.

## 5.4 Non-standard residues in protein, DNA, RNA chains [i](#)

There are no non-standard protein/DNA/RNA residues in this entry.

## 5.5 Carbohydrates [i](#)

There are no monosaccharides in this entry.

## 5.6 Ligand geometry [i](#)

Of 4 ligands modelled in this entry, 2 are monoatomic - leaving 2 for Mogul analysis.

In the following table, the Counts columns list the number of bonds (or angles) for which Mogul statistics could be retrieved, the number of bonds (or angles) that are observed in the model and the number of bonds (or angles) that are defined in the Chemical Component Dictionary. The Link column lists molecule types, if any, to which the group is linked. The Z score for a bond length (or angle) is the number of standard deviations the observed value is removed from the expected value. A bond length (or angle) with  $|Z| > 2$  is considered an outlier worth inspection. RMSZ is the root-mean-square of all Z scores of the bond lengths (or angles).

Mol	Type	Chain	Res	Link	Bond lengths			Bond angles		
					Counts	RMSZ	# Z  > 2	Counts	RMSZ	# Z  > 2
9	GTP	I	1001	8	26,34,34	1.19	1 (3%)	32,54,54	1.53	7 (21%)
9	GTP	F	202	8	26,34,34	1.19	1 (3%)	32,54,54	1.54	7 (21%)

In the following table, the Chirals column lists the number of chiral outliers, the number of chiral centers analysed, the number of these observed in the model and the number defined in the Chemical Component Dictionary. Similar counts are reported in the Torsion and Rings columns. '-' means no outliers of that kind were identified.

Mol	Type	Chain	Res	Link	Chirals	Torsions	Rings
9	GTP	I	1001	8	-	6/18/38/38	0/3/3/3
9	GTP	F	202	8	-	6/18/38/38	0/3/3/3

All (2) bond length outliers are listed below:

Mol	Chain	Res	Type	Atoms	Z	Observed(Å)	Ideal(Å)
9	I	1001	GTP	C5-C6	-4.33	1.38	1.47
9	F	202	GTP	C5-C6	-4.29	1.38	1.47

All (14) bond angle outliers are listed below:

Mol	Chain	Res	Type	Atoms	Z	Observed(°)	Ideal(°)
9	I	1001	GTP	PB-O3B-PG	-3.73	120.03	132.83
9	F	202	GTP	PB-O3B-PG	-3.72	120.05	132.83
9	F	202	GTP	C3'-C2'-C1'	3.15	105.73	100.98
9	I	1001	GTP	C3'-C2'-C1'	3.11	105.66	100.98

*Continued on next page...*

Continued from previous page...

Mol	Chain	Res	Type	Atoms	Z	Observed(°)	Ideal(°)
9	F	202	GTP	C5-C6-N1	3.02	119.29	113.95
9	I	1001	GTP	C5-C6-N1	3.01	119.27	113.95
9	F	202	GTP	C2-N1-C6	-2.85	119.84	125.10
9	I	1001	GTP	C2-N1-C6	-2.84	119.87	125.10
9	F	202	GTP	C8-N7-C5	2.82	108.36	102.99
9	I	1001	GTP	C8-N7-C5	2.78	108.28	102.99
9	F	202	GTP	PA-O3A-PB	-2.72	123.51	132.83
9	I	1001	GTP	PA-O3A-PB	-2.71	123.53	132.83
9	F	202	GTP	O6-C6-C5	-2.07	120.32	124.37
9	I	1001	GTP	O6-C6-C5	-2.06	120.34	124.37

There are no chirality outliers.

All (12) torsion outliers are listed below:

Mol	Chain	Res	Type	Atoms
9	F	202	GTP	C5'-O5'-PA-O1A
9	I	1001	GTP	C5'-O5'-PA-O1A
9	F	202	GTP	PB-O3A-PA-O5'
9	I	1001	GTP	PB-O3A-PA-O5'
9	F	202	GTP	C5'-O5'-PA-O3A
9	I	1001	GTP	C5'-O5'-PA-O3A
9	F	202	GTP	C5'-O5'-PA-O2A
9	I	1001	GTP	C5'-O5'-PA-O2A
9	F	202	GTP	O4'-C4'-C5'-O5'
9	I	1001	GTP	O4'-C4'-C5'-O5'
9	F	202	GTP	C3'-C4'-C5'-O5'
9	I	1001	GTP	C3'-C4'-C5'-O5'

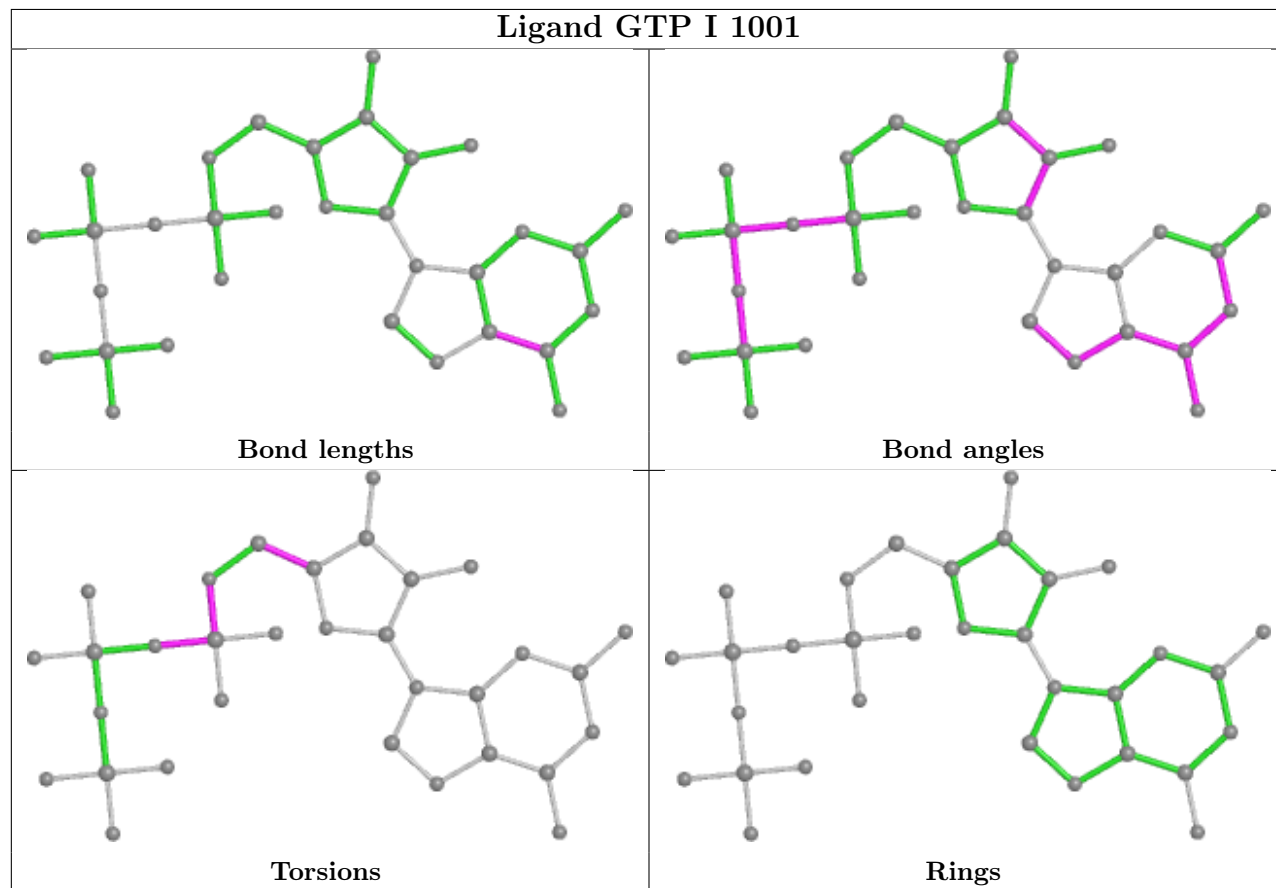
There are no ring outliers.

2 monomers are involved in 7 short contacts:

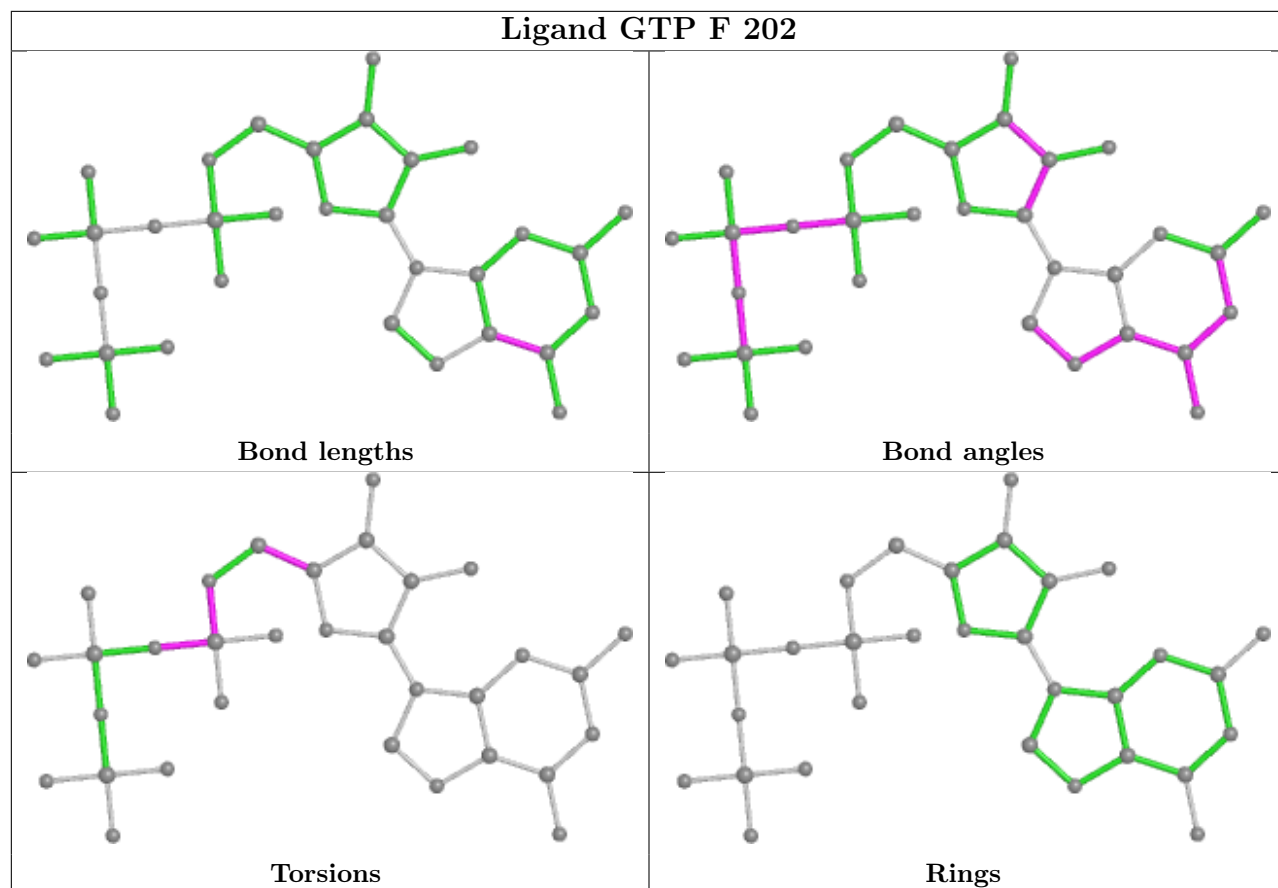
Mol	Chain	Res	Type	Clashes	Symm-Clashes
9	I	1001	GTP	4	0
9	F	202	GTP	3	0

The following is a two-dimensional graphical depiction of Mogul quality analysis of bond lengths, bond angles, torsion angles, and ring geometry for all instances of the Ligand of Interest. In addition, ligands with molecular weight > 250 and outliers as shown on the validation Tables will also be included. For torsion angles, if less than 5% of the Mogul distribution of torsion angles is within 10 degrees of the torsion angle in question, then that torsion angle is considered an outlier. Any bond that is central to one or more torsion angles identified as an outlier by Mogul will be highlighted in the graph. For rings, the root-mean-square deviation (RMSD) between the ring

in question and similar rings identified by Mogul is calculated over all ring torsion angles. If the average RMSD is greater than 60 degrees and the minimal RMSD between the ring in question and any Mogul-identified rings is also greater than 60 degrees, then that ring is considered an outlier. The outliers are highlighted in purple. The color gray indicates Mogul did not find sufficient equivalents in the CSD to analyse the geometry.







## 5.7 Other polymers [i](#)

There are no such residues in this entry.

## 5.8 Polymer linkage issues [i](#)

There are no chain breaks in this entry.

## 6 Map visualisation [i](#)

This section contains visualisations of the EMDB entry EMD-27186. These allow visual inspection of the internal detail of the map and identification of artifacts.

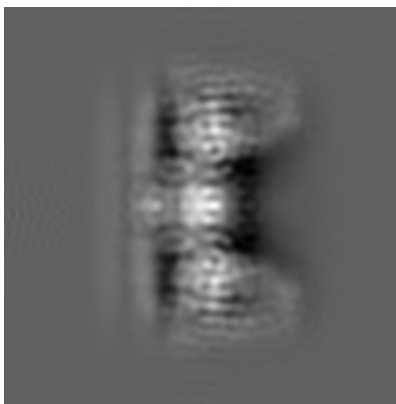
Images derived from a raw map, generated by summing the deposited half-maps, are presented below the corresponding image components of the primary map to allow further visual inspection and comparison with those of the primary map.

### 6.1 Orthogonal projections [i](#)

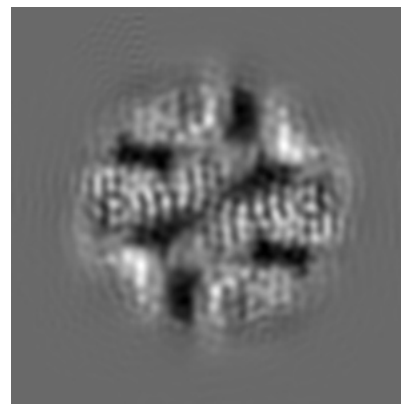
#### 6.1.1 Primary map



X

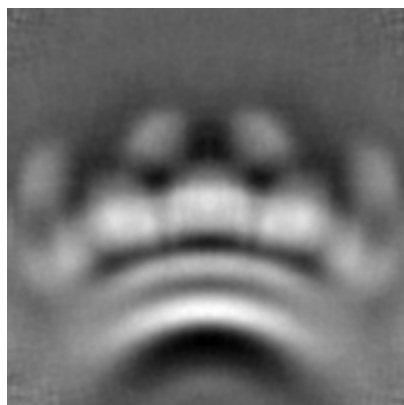


Y

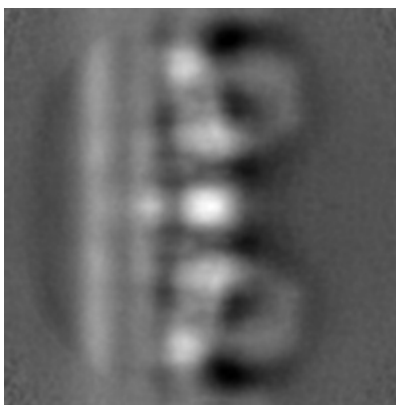


Z

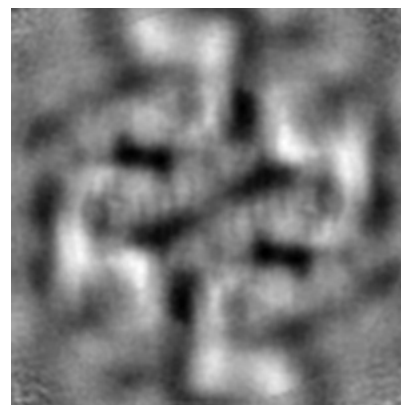
#### 6.1.2 Raw map



X



Y

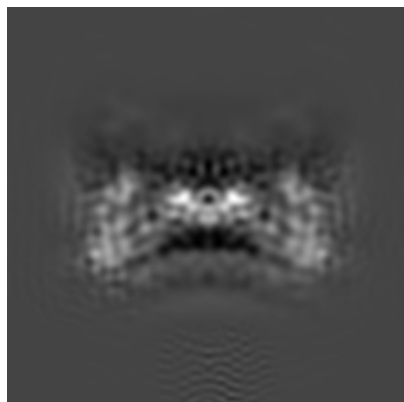


Z

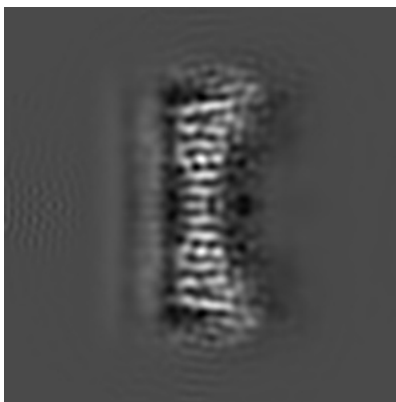
The images above show the map projected in three orthogonal directions.

## 6.2 Central slices [i](#)

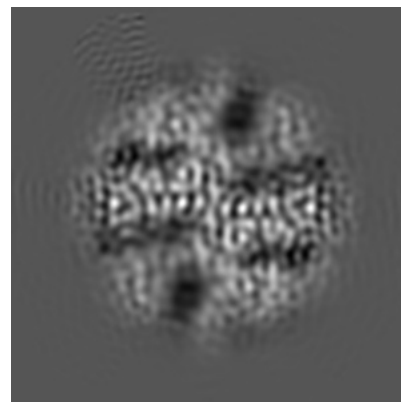
### 6.2.1 Primary map



X Index: 64



Y Index: 64

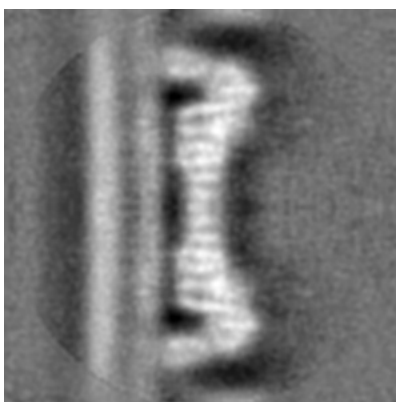


Z Index: 64

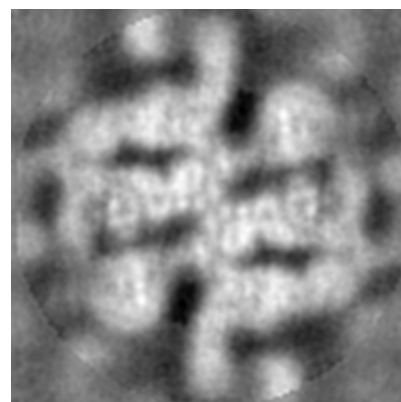
### 6.2.2 Raw map



X Index: 64



Y Index: 64

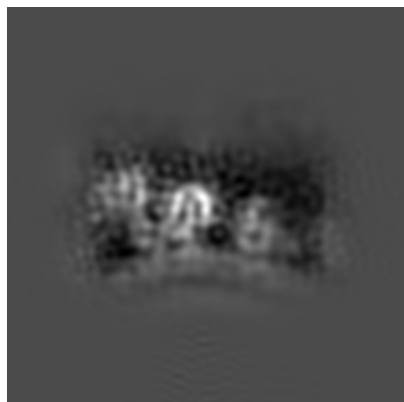


Z Index: 64

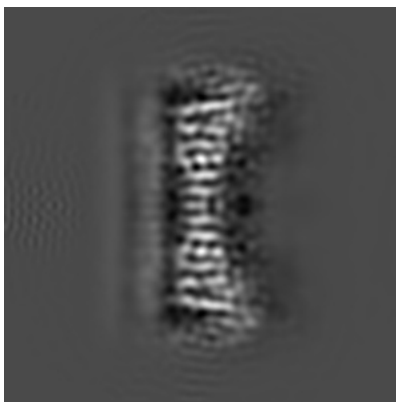
The images above show central slices of the map in three orthogonal directions.

## 6.3 Largest variance slices [i](#)

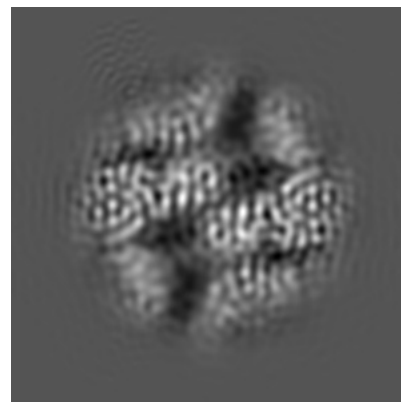
### 6.3.1 Primary map



X Index: 74



Y Index: 64

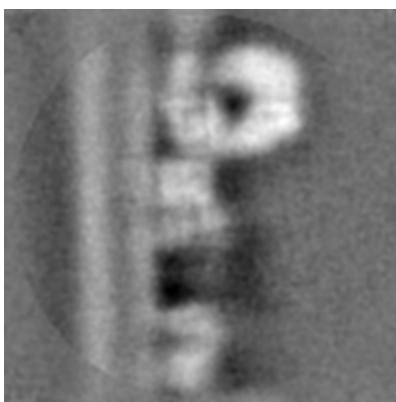


Z Index: 67

### 6.3.2 Raw map



X Index: 86



Y Index: 81



Z Index: 70

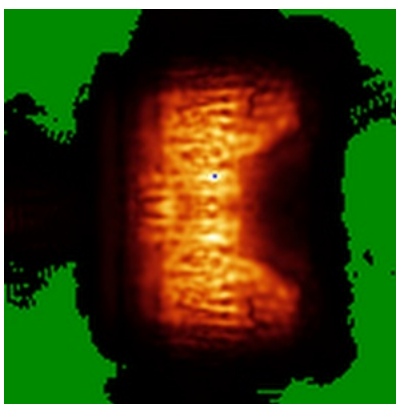
The images above show the largest variance slices of the map in three orthogonal directions.

## 6.4 Orthogonal standard-deviation projections (False-color) [i](#)

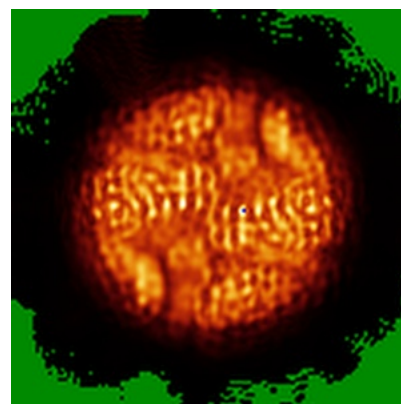
### 6.4.1 Primary map



X

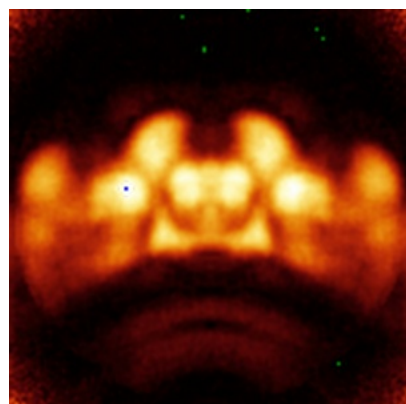


Y

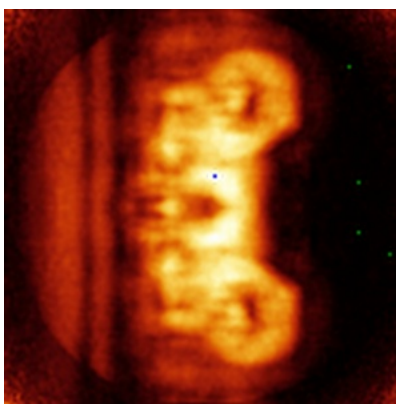


Z

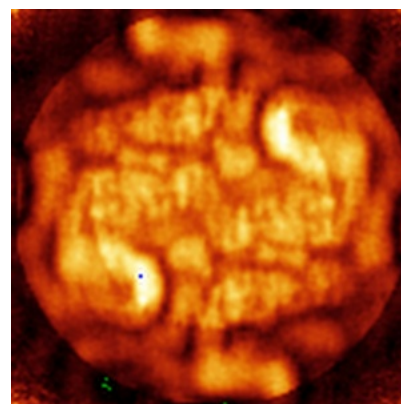
### 6.4.2 Raw map



X



Y

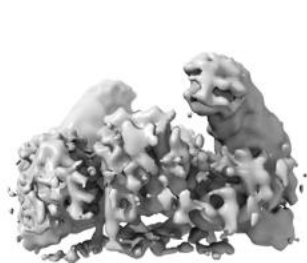


Z

The images above show the map standard deviation projections with false color in three orthogonal directions. Minimum values are shown in green, max in blue, and dark to light orange shades represent small to large values respectively.

## 6.5 Orthogonal surface views [i](#)

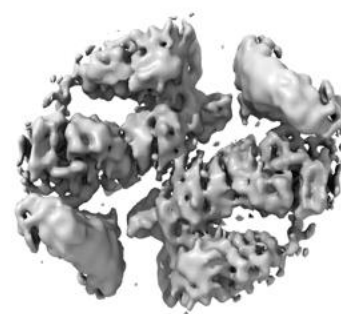
### 6.5.1 Primary map



X



Y



Z

The images above show the 3D surface view of the map at the recommended contour level 4.0. These images, in conjunction with the slice images, may facilitate assessment of whether an appropriate contour level has been provided.

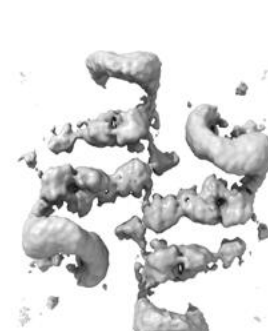
### 6.5.2 Raw map



X



Y



Z

These images show the 3D surface of the raw map. The raw map's contour level was selected so that its surface encloses the same volume as the primary map does at its recommended contour level.

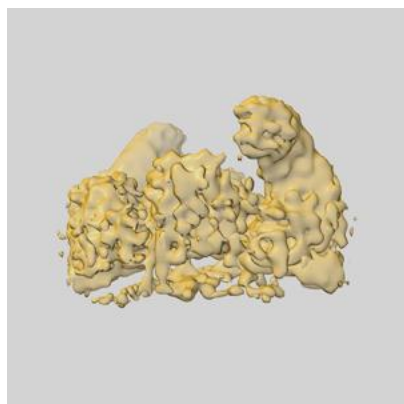
## 6.6 Mask visualisation [i](#)

This section shows the 3D surface view of the primary map at 50% transparency overlaid with the specified mask at 0% transparency

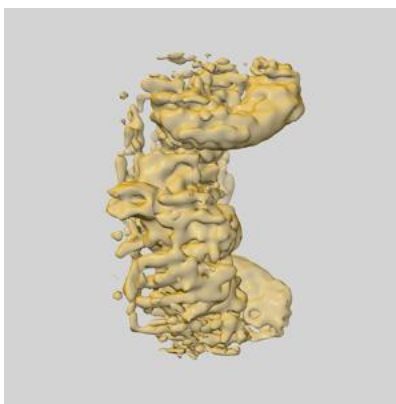
A mask typically either:

- Encompasses the whole structure
- Separates out a domain, a functional unit, a monomer or an area of interest from a larger structure

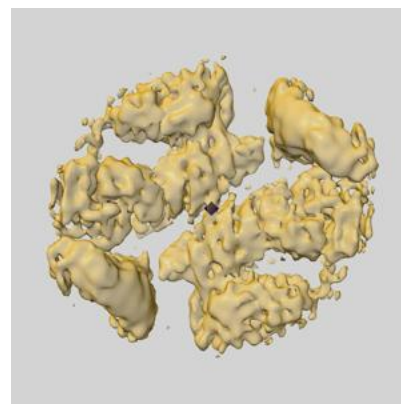
### 6.6.1 emd\_27186\_msk\_1.map [i](#)



X



Y

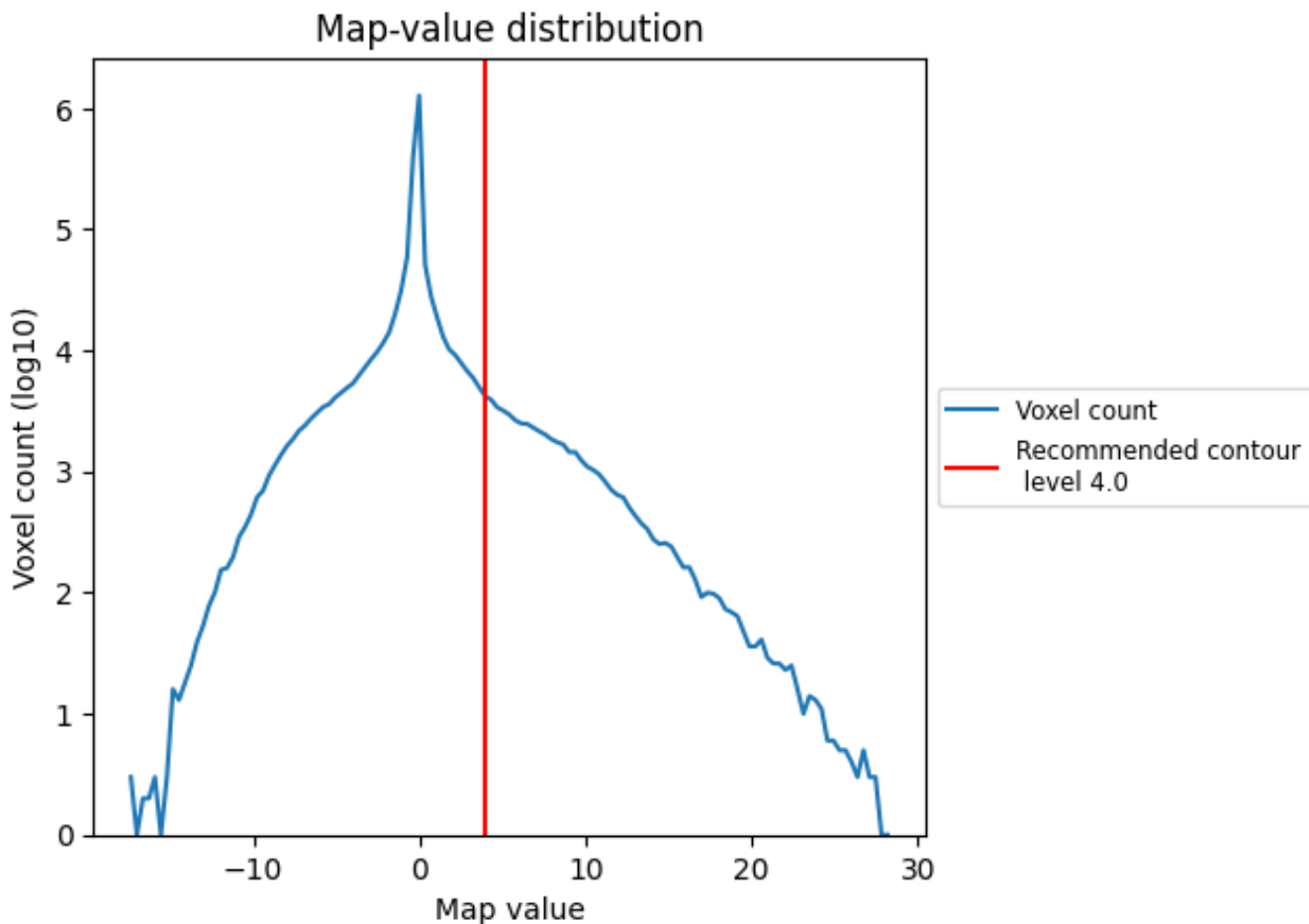


Z

## 7 Map analysis [i](#)

This section contains the results of statistical analysis of the map.

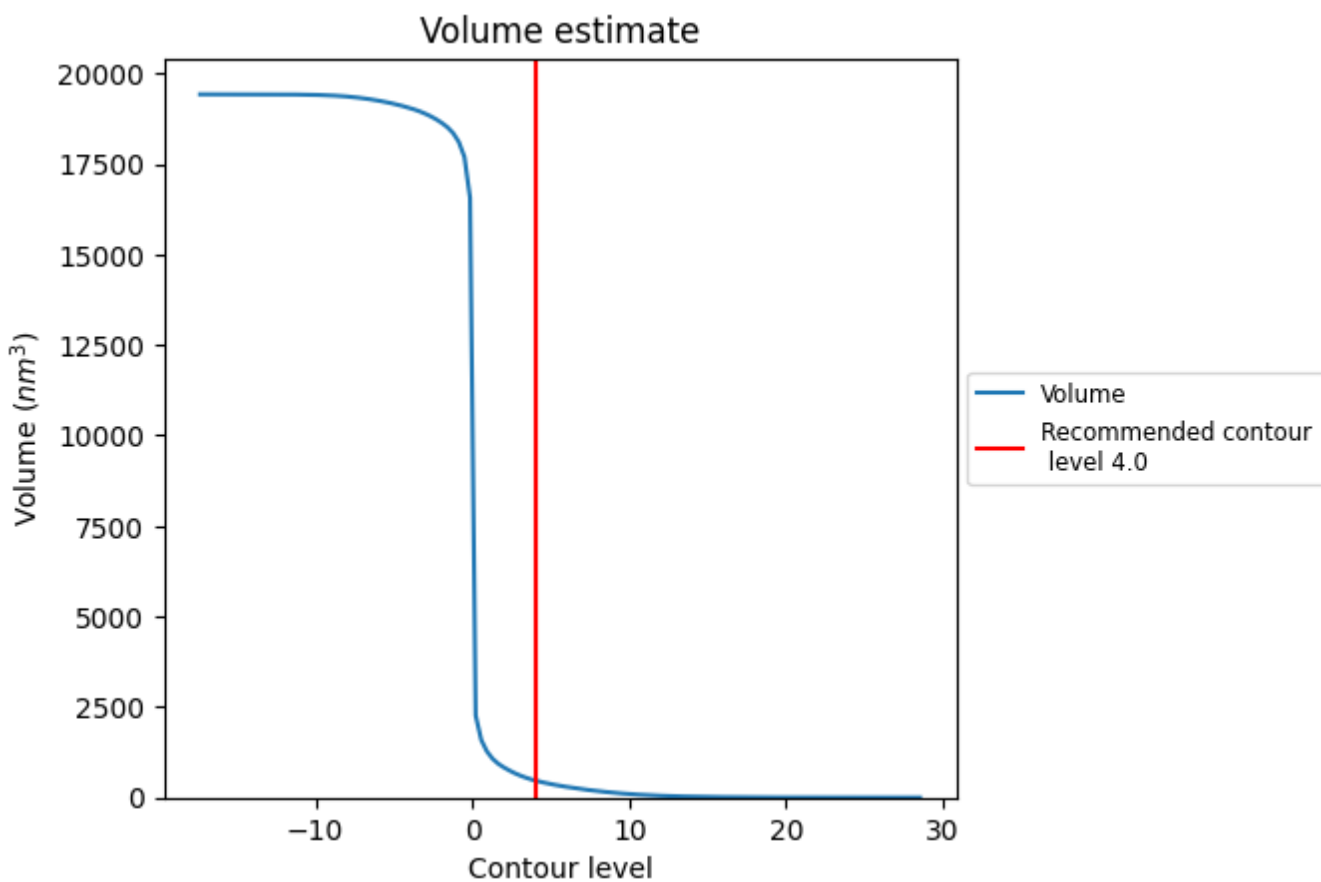
### 7.1 Map-value distribution [i](#)



The map-value distribution is plotted in 128 intervals along the x-axis. The y-axis is logarithmic. A spike in this graph at zero usually indicates that the volume has been masked.



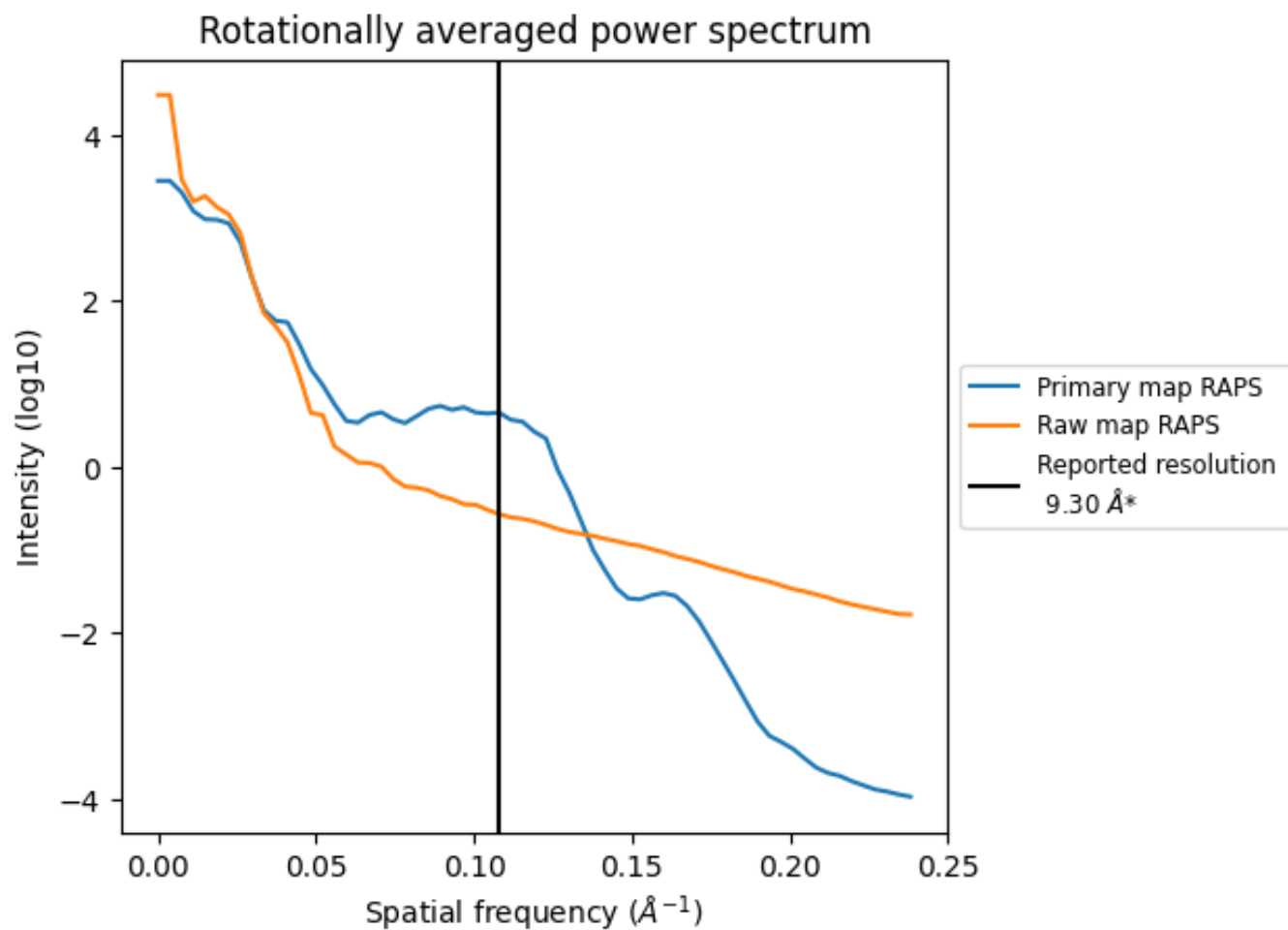
## 7.2 Volume estimate [i](#)



The volume at the recommended contour level is 472 nm<sup>3</sup>; this corresponds to an approximate mass of 426 kDa.

The volume estimate graph shows how the enclosed volume varies with the contour level. The recommended contour level is shown as a vertical line and the intersection between the line and the curve gives the volume of the enclosed surface at the given level.

### 7.3 Rotationally averaged power spectrum i

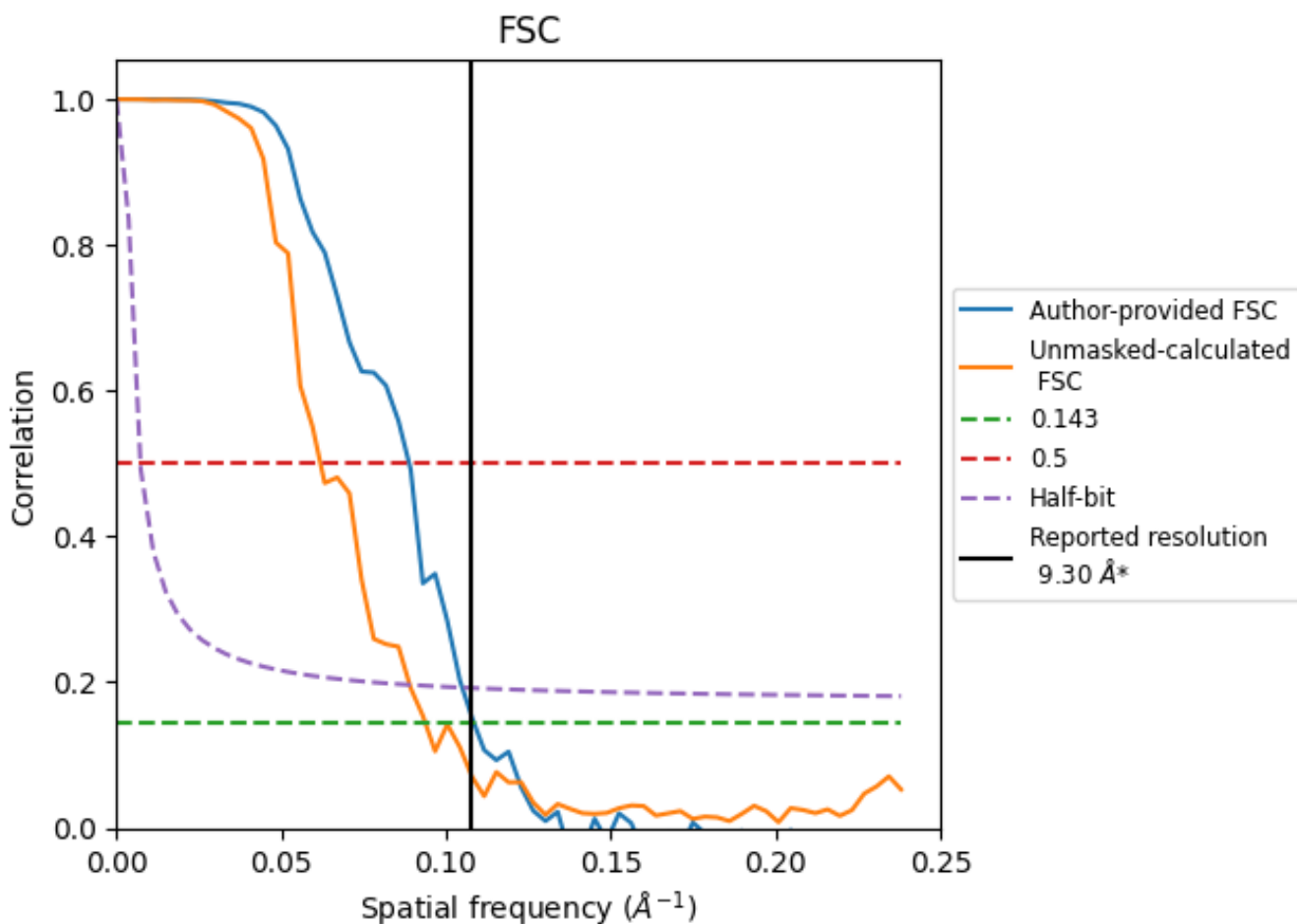


\*Reported resolution corresponds to spatial frequency of 0.108 Å<sup>-1</sup>

## 8 Fourier-Shell correlation [i](#)

Fourier-Shell Correlation (FSC) is the most commonly used method to estimate the resolution of single-particle and subtomogram-averaged maps. The shape of the curve depends on the imposed symmetry, mask and whether or not the two 3D reconstructions used were processed from a common reference. The reported resolution is shown as a black line. A curve is displayed for the half-bit criterion in addition to lines showing the 0.143 gold standard cut-off and 0.5 cut-off.

### 8.1 FSC [i](#)



\*Reported resolution corresponds to spatial frequency of 0.108 Å<sup>-1</sup>

## 8.2 Resolution estimates [i](#)

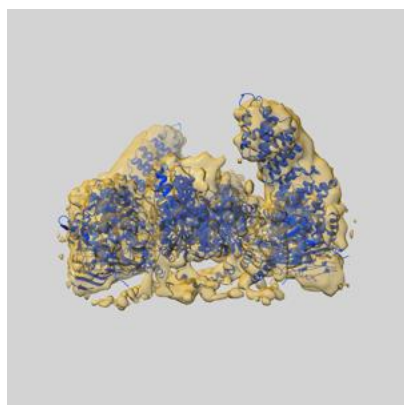
Resolution estimate (Å)	Estimation criterion (FSC cut-off)		
	0.143	0.5	Half-bit
Reported by author	9.30	-	-
Author-provided FSC curve	9.21	11.26	9.52
Unmasked-calculated*	10.66	16.13	11.24

\*Resolution estimate based on FSC curve calculated by comparison of deposited half-maps. The value from deposited half-maps intersecting FSC 0.143 CUT-OFF 10.66 differs from the reported value 9.3 by more than 10 %

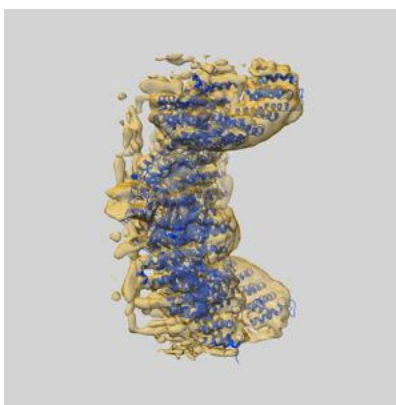
## 9 Map-model fit [i](#)

This section contains information regarding the fit between EMDB map EMD-27186 and PDB model 8D9W. Per-residue inclusion information can be found in section [3](#) on page [9](#).

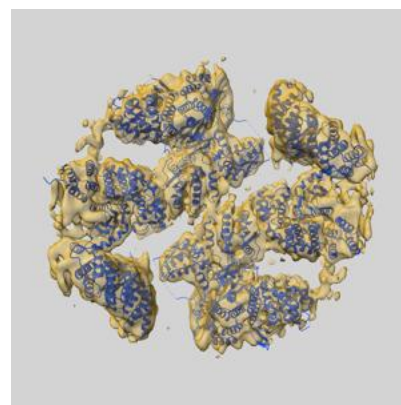
### 9.1 Map-model overlay [i](#)



X



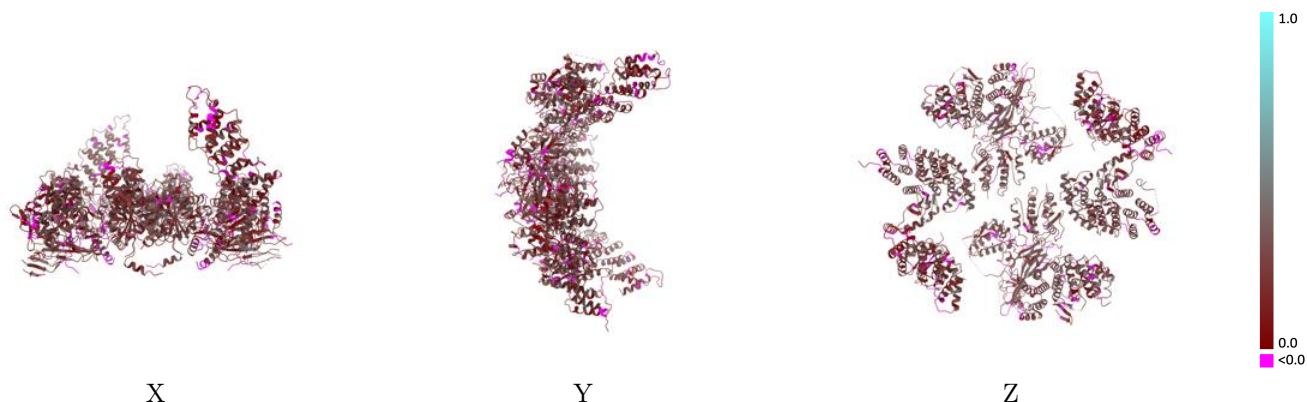
Y



Z

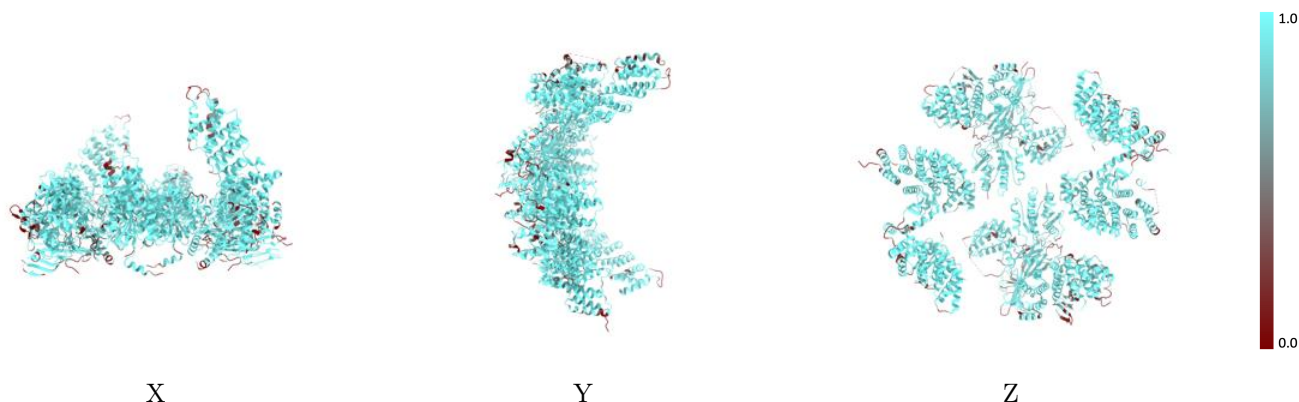
The images above show the 3D surface view of the map at the recommended contour level 4.0 at 50% transparency in yellow overlaid with a ribbon representation of the model coloured in blue. These images allow for the visual assessment of the quality of fit between the atomic model and the map.

## 9.2 Q-score mapped to coordinate model [\(i\)](#)



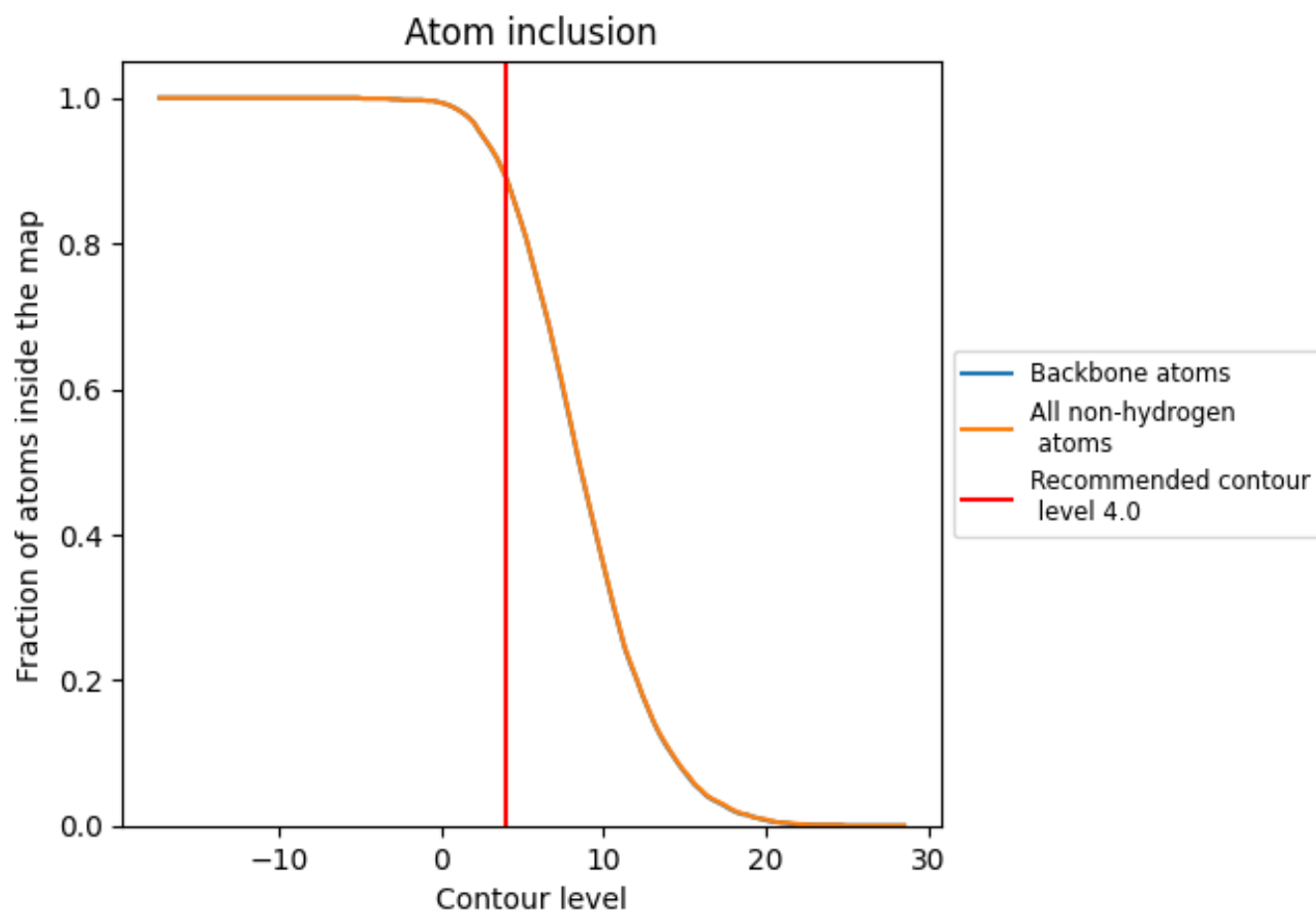
The images above show the model with each residue coloured according to its Q-score. This shows their resolvability in the map with higher Q-score values reflecting better resolvability. Please note: Q-score is calculating the resolvability of atoms, and thus high values are only expected at resolutions at which atoms can be resolved. Low Q-score values may therefore be expected for many entries.

## 9.3 Atom inclusion mapped to coordinate model [\(i\)](#)



The images above show the model with each residue coloured according to its atom inclusion. This shows to what extent they are inside the map at the recommended contour level (4.0).





























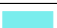

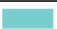











## 9.4 Atom inclusion [i](#)



At the recommended contour level, 89% of all backbone atoms, 89% of all non-hydrogen atoms, are inside the map.

## 9.5 Map-model fit summary

The table lists the average atom inclusion at the recommended contour level (4.0) and Q-score for the entire model and for each chain.

Chain	Atom inclusion	Q-score
All	 0.8900	 0.2040
A	 0.9300	 0.2460
B	 0.9360	 0.2220
D	 0.9470	 0.2490
E	 0.9030	 0.2150
F	 0.9350	 0.2170
I	 0.9420	 0.2210
K	 0.9320	 0.1680
M	 0.8240	 0.1860
N	 0.8700	 0.1730
O	 0.9050	 0.1560
U	 0.7250	 0.1600
V	 0.7250	 0.1840
X	 0.9340	 0.2570
Y	 0.3060	 0.0410
Z	 0.9320	 0.2530
a	 0.8050	 0.1790
d	 0.8720	 0.1770
e	 0.8600	 0.2030
f	 0.8520	 0.2000
j	 0.3060	 0.0360

