



# Full wwPDB X-ray Structure Validation Report ⓘ

Dec 17, 2023 – 09:25 am GMT

PDB ID : 4D04  
Title : Structure of the Cys65Asp mutant of phenylacetone monooxygenase: reduced state  
Authors : Brondani, P.B.; Dudek, H.M.; Martinoli, C.; Mattevi, A.; Fraaije, M.W.  
Deposited on : 2014-04-24  
Resolution : 1.75 Å(reported)

This is a Full wwPDB X-ray Structure Validation Report for a publicly released PDB entry.

We welcome your comments at [validation@mail.wwpdb.org](mailto:validation@mail.wwpdb.org)

A user guide is available at

<https://www.wwpdb.org/validation/2017/XrayValidationReportHelp>

with specific help available everywhere you see the ⓘ symbol.

The types of validation reports are described at

<http://www.wwpdb.org/validation/2017/FAQs#types>.

---

The following versions of software and data (see [references ⓘ](#)) were used in the production of this report:

MolProbity : 4.02b-467  
Mogul : 1.8.4, CSD as541be (2020)  
Xtriage (Phenix) : 1.13  
EDS : 2.36  
buster-report : 1.1.7 (2018)  
Percentile statistics : 20191225.v01 (using entries in the PDB archive December 25th 2019)  
Refmac : 5.8.0158  
CCP4 : 7.0.044 (Gargrove)  
Ideal geometry (proteins) : Engh & Huber (2001)  
Ideal geometry (DNA, RNA) : Parkinson et al. (1996)  
Validation Pipeline (wwPDB-VP) : 2.36

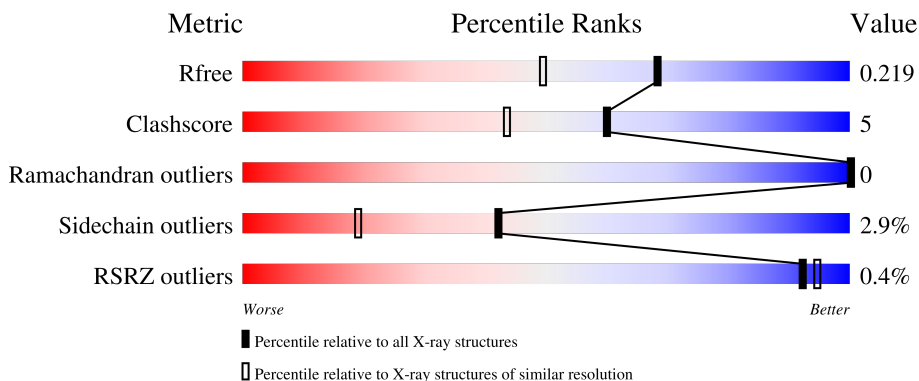
# 1 Overall quality at a glance

The following experimental techniques were used to determine the structure:

*X-RAY DIFFRACTION*


The reported resolution of this entry is 1.75 Å.

Percentile scores (ranging between 0-100) for global validation metrics of the entry are shown in the following graphic. The table shows the number of entries on which the scores are based.



Metric	Whole archive (#Entries)	Similar resolution (#Entries, resolution range(Å))
$R_{free}$	130704	2340 (1.76-1.76)
Clashscore	141614	2466 (1.76-1.76)
Ramachandran outliers	138981	2437 (1.76-1.76)
Sidechain outliers	138945	2437 (1.76-1.76)
RSRZ outliers	127900	2298 (1.76-1.76)

The table below summarises the geometric issues observed across the polymeric chains and their fit to the electron density. The red, orange, yellow and green segments of the lower bar indicate the fraction of residues that contain outliers for  $\geq 3$ , 2, 1 and 0 types of geometric quality criteria respectively. A grey segment represents the fraction of residues that are not modelled. The numeric value for each fraction is indicated below the corresponding segment, with a dot representing fractions  $\leq 5\%$ . The upper red bar (where present) indicates the fraction of residues that have poor fit to the electron density. The numeric value is given above the bar.

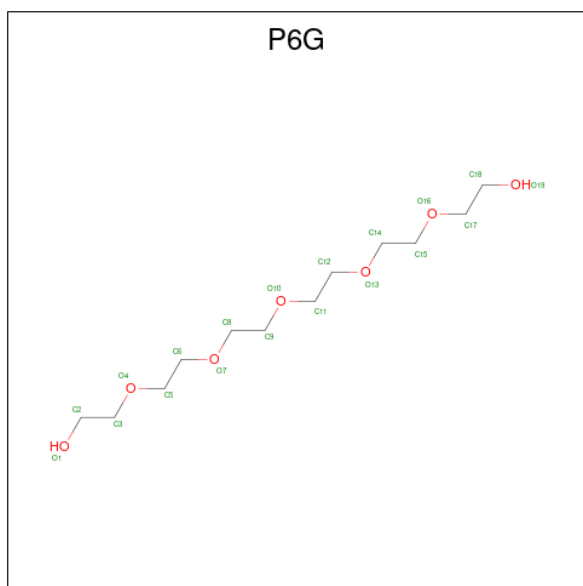
Mol	Chain	Length	Quality of chain
1	A	542	 86% 10% ..





Mol	Chain	Residues	Atoms					ZeroOcc	AltConf
			Total	C	N	O	P		
3	A	1	48	21	7	17	3	0	0

- Molecule 4 is HEXAETHYLENE GLYCOL (three-letter code: P6G) (formula:  $C_{12}H_{26}O_7$ ).



Mol	Chain	Residues	Atoms			ZeroOcc	AltConf
			Total	C	O		
4	A	1	10	6	4	0	0
4	A	1	10	6	4	0	0


- Molecule 5 is water.

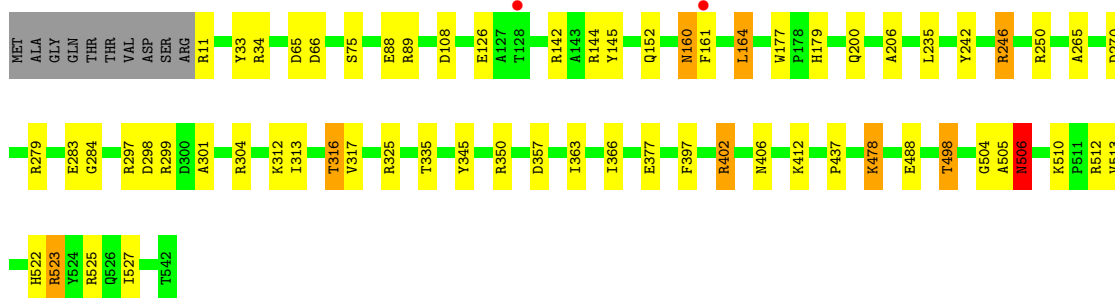
<b>Mol</b>	<b>Chain</b>	<b>Residues</b>	<b>Atoms</b>		<b>ZeroOcc</b>	<b>AltConf</b>
5	A	310	Total 310	O 310	0	0

### 3 Residue-property plots [i](#)

These plots are drawn for all protein, RNA, DNA and oligosaccharide chains in the entry. The first graphic for a chain summarises the proportions of the various outlier classes displayed in the second graphic. The second graphic shows the sequence view annotated by issues in geometry and electron density. Residues are color-coded according to the number of geometric quality criteria for which they contain at least one outlier: green = 0, yellow = 1, orange = 2 and red = 3 or more. A red dot above a residue indicates a poor fit to the electron density ( $RSRZ > 2$ ). Stretches of 2 or more consecutive residues without any outlier are shown as a green connector. Residues present in the sample, but not in the model, are shown in grey.

- Molecule 1: PHENYLACETONE MONOOXYGENASE

Chain A:  86% 10% ..



## 4 Data and refinement statistics

Property	Value	Source
Space group	P 32 2 1	Depositor
Cell constants a, b, c, $\alpha$ , $\beta$ , $\gamma$	107.88Å 107.88Å 107.04Å 90.00° 90.00° 120.00°	Depositor
Resolution (Å)	54.00 – 1.75 53.94 – 1.75	Depositor EDS
% Data completeness (in resolution range)	99.8 (54.00-1.75) 99.8 (53.94-1.75)	Depositor EDS
$R_{merge}$	0.08	Depositor
$R_{sym}$	(Not available)	Depositor
$\langle I/\sigma(I) \rangle$ <sup>1</sup>	1.45 (at 1.75Å)	Xtrriage
Refinement program	REFMAC 5.7.0032	Depositor
R, $R_{free}$	0.183 , 0.216 0.190 , 0.219	Depositor DCC
$R_{free}$ test set	3668 reflections (5.08%)	wwPDB-VP
Wilson B-factor (Å <sup>2</sup> )	25.7	Xtrriage
Anisotropy	0.115	Xtrriage
Bulk solvent $k_{sol}$ (e/Å <sup>3</sup> ), $B_{sol}$ (Å <sup>2</sup> )	0.36 , 42.5	EDS
L-test for twinning <sup>2</sup>	$\langle  L  \rangle = 0.49$ , $\langle L^2 \rangle = 0.32$	Xtrriage
Estimated twinning fraction	0.024 for -h,-k,l	Xtrriage
$F_o, F_c$ correlation	0.96	EDS
Total number of atoms	4678	wwPDB-VP
Average B, all atoms (Å <sup>2</sup> )	29.0	wwPDB-VP

Xtrriage's analysis on translational NCS is as follows: *The largest off-origin peak in the Patterson function is 3.54% of the height of the origin peak. No significant pseudotranslation is detected.*

<sup>1</sup>Intensities estimated from amplitudes.

<sup>2</sup>Theoretical values of  $\langle |L| \rangle$ ,  $\langle L^2 \rangle$  for acentric reflections are 0.5, 0.333 respectively for untwinned datasets, and 0.375, 0.2 for perfectly twinned datasets.

## 5 Model quality i

### 5.1 Standard geometry i

Bond lengths and bond angles in the following residue types are not validated in this section: P6G, NAP, FAD

The Z score for a bond length (or angle) is the number of standard deviations the observed value is removed from the expected value. A bond length (or angle) with  $|Z| > 5$  is considered an outlier worth inspection. RMSZ is the root-mean-square of all Z scores of the bond lengths (or angles).

Mol	Chain	Bond lengths		Bond angles	
		RMSZ	# Z  >5	RMSZ	# Z  >5
1	A	1.08	4/4369 (0.1%)	1.10	27/5945 (0.5%)

All (4) bond length outliers are listed below:

Mol	Chain	Res	Type	Atoms	Z	Observed(Å)	Ideal(Å)
1	A	506	ASN	CG-ND2	10.53	1.59	1.32
1	A	506	ASN	CA-CB	5.70	1.68	1.53
1	A	177	TRP	CB-CG	-5.70	1.40	1.50
1	A	283	GLU	CD-OE1	5.46	1.31	1.25

All (27) bond angle outliers are listed below:

Mol	Chain	Res	Type	Atoms	Z	Observed(°)	Ideal(°)
1	A	523	ARG	NE-CZ-NH1	10.24	125.42	120.30
1	A	402	ARG	NE-CZ-NH2	-9.90	115.35	120.30
1	A	65	ASP	CB-CG-OD2	7.92	125.43	118.30
1	A	513	VAL	CB-CA-C	-7.75	96.67	111.40
1	A	505	ALA	C-N-CA	6.50	137.96	121.70
1	A	89	ARG	NE-CZ-NH2	-6.20	117.20	120.30
1	A	513	VAL	CG1-CB-CG2	6.18	120.79	110.90
1	A	34	ARG	NE-CZ-NH1	6.15	123.38	120.30
1	A	160	ASN	CB-CA-C	6.09	122.59	110.40
1	A	506	ASN	CB-CG-OD1	-5.83	109.95	121.60
1	A	250	ARG	NE-CZ-NH1	5.80	123.20	120.30
1	A	246	ARG	NE-CZ-NH2	-5.68	117.46	120.30
1	A	11	ARG	NE-CZ-NH1	5.63	123.11	120.30
1	A	525	ARG	NE-CZ-NH2	-5.62	117.49	120.30
1	A	89	ARG	NE-CZ-NH1	5.52	123.06	120.30
1	A	397	PHE	CB-CG-CD1	5.51	124.66	120.80
1	A	412	LYS	CD-CE-NZ	5.48	124.30	111.70

*Continued on next page...*



Continued from previous page...

Mol	Chain	Res	Type	Atoms	Z	Observed(°)	Ideal(°)
1	A	11	ARG	NE-CZ-NH2	-5.43	117.58	120.30
1	A	402	ARG	NE-CZ-NH1	5.33	122.96	120.30
1	A	299	ARG	NE-CZ-NH1	5.32	122.96	120.30
1	A	88	GLU	OE1-CD-OE2	-5.28	116.96	123.30
1	A	66	ASP	CB-CG-OD1	5.27	123.04	118.30
1	A	298	ASP	CB-CG-OD2	-5.18	113.64	118.30
1	A	298	ASP	CB-CG-OD1	5.13	122.92	118.30
1	A	33	TYR	CB-CG-CD2	-5.12	117.93	121.00
1	A	506	ASN	CB-CG-ND2	5.10	128.93	116.70
1	A	235	LEU	CB-CG-CD1	-5.02	102.47	111.00

There are no chirality outliers.

There are no planarity outliers.

## 5.2 Too-close contacts [i](#)

In the following table, the Non-H and H(model) columns list the number of non-hydrogen atoms and hydrogen atoms in the chain respectively. The H(added) column lists the number of hydrogen atoms added and optimized by MolProbity. The Clashes column lists the number of clashes within the asymmetric unit, whereas Symm-Clashes lists symmetry-related clashes.

Mol	Chain	Non-H	H(model)	H(added)	Clashes	Symm-Clashes
1	A	4247	0	4097	35	0
2	A	53	0	31	1	0
3	A	48	0	25	1	0
4	A	20	0	26	5	0
5	A	310	0	0	11	0
All	All	4678	0	4179	39	0

The all-atom clashscore is defined as the number of clashes found per 1000 atoms (including hydrogen atoms). The all-atom clashscore for this structure is 5.

All (39) close contacts within the same asymmetric unit are listed below, sorted by their clash magnitude.

Atom-1	Atom-2	Interatomic distance (Å)	Clash overlap (Å)
1:A:527:ILE:HD11	5:A:2285:HOH:O	1.29	1.26
1:A:527:ILE:CD1	5:A:2285:HOH:O	1.96	0.94
1:A:312[B]:LYS:HE3	1:A:312[B]:LYS:HA	1.58	0.85
1:A:523:ARG:CZ	5:A:2284:HOH:O	2.25	0.84
1:A:335:THR:OG1	1:A:498:THR:HG21	1.79	0.83

Continued on next page...

*Continued from previous page...*

Atom-1	Atom-2	Interatomic distance (Å)	Clash overlap (Å)
1:A:108:ASP:HB2	5:A:2096:HOH:O	1.78	0.81
1:A:510:LYS:O	1:A:512:ARG:NH1	2.13	0.81
1:A:313:ILE:O	1:A:316:THR:HG22	1.90	0.72
1:A:506:ASN:N	1:A:506:ASN:OD1	2.23	0.69
1:A:144:ARG:HG2	1:A:145:TYR:CE2	2.29	0.68
1:A:316:THR:HG23	1:A:317:VAL:HG23	1.75	0.67
1:A:523:ARG:NH2	5:A:2284:HOH:O	2.28	0.64
1:A:402:ARG:HD2	1:A:406:ASN:ND2	2.12	0.64
4:A:1543:P6G:H62	5:A:2198:HOH:O	2.04	0.58
1:A:504:GLY:C	1:A:506:ASN:OD1	2.44	0.56
1:A:316:THR:CG2	1:A:345:TYR:HB3	2.37	0.54
1:A:152:GLN:HE22	2:A:700:FAD:H5'2	1.73	0.53
1:A:325:ARG:HD2	1:A:357:ASP:HB2	1.92	0.51
1:A:279:ARG:HB3	4:A:1543:P6G:H32	1.93	0.51
1:A:316:THR:HG21	1:A:345:TYR:HB3	1.92	0.50
1:A:206:ALA:O	1:A:350:ARG:NH2	2.46	0.49
1:A:144:ARG:HG2	1:A:145:TYR:CD2	2.49	0.48
4:A:1543:P6G:C6	5:A:2198:HOH:O	2.61	0.48
1:A:126:GLU:O	1:A:126:GLU:HG3	2.14	0.47
1:A:284:GLY:HA2	5:A:2152:HOH:O	2.14	0.47
1:A:297:ARG:NH2	5:A:2203:HOH:O	2.48	0.47
1:A:316:THR:CG2	1:A:317:VAL:HG23	2.43	0.46
1:A:164:LEU:HD13	1:A:366:ILE:HG13	1.99	0.45
1:A:265:ALA:HB3	1:A:301:ALA:HB1	2.00	0.44
1:A:200:GLN:NE2	3:A:701:NAP:N7N	2.66	0.44
4:A:1544:P6G:H91	5:A:2274:HOH:O	2.17	0.43
1:A:161:PHE:CE1	1:A:363:ILE:HB	2.54	0.42
1:A:335:THR:OG1	1:A:498:THR:CG2	2.60	0.42
1:A:75:SER:CB	1:A:246:ARG:HG2	2.48	0.42
1:A:478:LYS:HB3	1:A:478:LYS:HE2	1.87	0.42
1:A:265:ALA:O	1:A:304:ARG:NH1	2.53	0.42
1:A:270:ASP:OD1	1:A:304:ARG:NH2	2.53	0.41
1:A:402:ARG:HD2	1:A:406:ASN:HD21	1.83	0.41
4:A:1543:P6G:H82	5:A:2192:HOH:O	2.20	0.40

There are no symmetry-related clashes.

## 5.3 Torsion angles [i](#)

### 5.3.1 Protein backbone [i](#)

In the following table, the Percentiles column shows the percent Ramachandran outliers of the chain as a percentile score with respect to all X-ray entries followed by that with respect to entries of similar resolution.

The Analysed column shows the number of residues for which the backbone conformation was analysed, and the total number of residues.

Mol	Chain	Analysed	Favoured	Allowed	Outliers	Percentiles
1	A	533/542 (98%)	523 (98%)	10 (2%)	0	100 100

There are no Ramachandran outliers to report.

### 5.3.2 Protein sidechains [i](#)

In the following table, the Percentiles column shows the percent sidechain outliers of the chain as a percentile score with respect to all X-ray entries followed by that with respect to entries of similar resolution.

The Analysed column shows the number of residues for which the sidechain conformation was analysed, and the total number of residues.

Mol	Chain	Analysed	Rotameric	Outliers	Percentiles
1	A	444/453 (98%)	431 (97%)	13 (3%)	42 19

All (13) residues with a non-rotameric sidechain are listed below:

Mol	Chain	Res	Type
1	A	142	ARG
1	A	160	ASN
1	A	164	LEU
1	A	179	HIS
1	A	242	TYR
1	A	316	THR
1	A	377	GLU
1	A	437	PRO
1	A	478	LYS
1	A	488	GLU
1	A	498	THR
1	A	506	ASN
1	A	522	HIS

Sometimes sidechains can be flipped to improve hydrogen bonding and reduce clashes. All (7) such sidechains are listed below:

Mol	Chain	Res	Type
1	A	12	GLN
1	A	58	ASN
1	A	129	ASN
1	A	152	GLN
1	A	160	ASN
1	A	315	ASN
1	A	406	ASN

### 5.3.3 RNA [i](#)

There are no RNA molecules in this entry.

### 5.4 Non-standard residues in protein, DNA, RNA chains [i](#)

There are no non-standard protein/DNA/RNA residues in this entry.

### 5.5 Carbohydrates [i](#)

There are no monosaccharides in this entry.

### 5.6 Ligand geometry [i](#)

4 ligands are modelled in this entry.

In the following table, the Counts columns list the number of bonds (or angles) for which Mogul statistics could be retrieved, the number of bonds (or angles) that are observed in the model and the number of bonds (or angles) that are defined in the Chemical Component Dictionary. The Link column lists molecule types, if any, to which the group is linked. The Z score for a bond length (or angle) is the number of standard deviations the observed value is removed from the expected value. A bond length (or angle) with  $|Z| > 2$  is considered an outlier worth inspection. RMSZ is the root-mean-square of all Z scores of the bond lengths (or angles).

Mol	Type	Chain	Res	Link	Bond lengths			Bond angles		
					Counts	RMSZ	# Z  > 2	Counts	RMSZ	# Z  > 2
3	NAP	A	701	-	45,52,52	1.65	11 (24%)	56,80,80	1.71	15 (26%)
4	P6G	A	1543	-	9,9,18	1.01	0	8,8,17	1.39	1 (12%)
4	P6G	A	1544	-	9,9,18	0.33	0	8,8,17	0.59	0
2	FAD	A	700	-	53,58,58	1.51	7 (13%)	68,89,89	1.31	10 (14%)

In the following table, the Chirals column lists the number of chiral outliers, the number of chiral centers analysed, the number of these observed in the model and the number defined in the Chemical Component Dictionary. Similar counts are reported in the Torsion and Rings columns. '-' means no outliers of that kind were identified.

Mol	Type	Chain	Res	Link	Chirals	Torsions	Rings
3	NAP	A	701	-	-	4/31/67/67	0/5/5/5
4	P6G	A	1543	-	-	4/7/7/16	-
4	P6G	A	1544	-	-	1/7/7/16	-
2	FAD	A	700	-	-	4/30/50/50	0/6/6/6

All (18) bond length outliers are listed below:

Mol	Chain	Res	Type	Atoms	Z	Observed(Å)	Ideal(Å)
2	A	700	FAD	C4X-N5	5.40	1.41	1.30
3	A	701	NAP	O4D-C1D	3.89	1.46	1.41
3	A	701	NAP	C4A-N3A	-3.78	1.30	1.35
3	A	701	NAP	P2B-O2B	3.57	1.66	1.59
3	A	701	NAP	P2B-O1X	3.39	1.61	1.50
2	A	700	FAD	C10-N1	3.36	1.40	1.33
3	A	701	NAP	C7N-N7N	3.31	1.39	1.33
2	A	700	FAD	C2B-C1B	-3.12	1.49	1.53
2	A	700	FAD	C7M-C7	2.99	1.57	1.51
3	A	701	NAP	C6N-N1N	2.74	1.42	1.35
3	A	701	NAP	C2N-C3N	2.56	1.43	1.39
3	A	701	NAP	C3B-C2B	2.43	1.58	1.52
3	A	701	NAP	C5N-C4N	2.36	1.43	1.38
2	A	700	FAD	C2A-N3A	2.35	1.35	1.32
2	A	700	FAD	C4A-N3A	-2.16	1.32	1.35
3	A	701	NAP	C2A-N3A	2.12	1.35	1.32
3	A	701	NAP	C3D-C4D	2.05	1.58	1.53
2	A	700	FAD	C2A-N1A	2.03	1.37	1.33

All (26) bond angle outliers are listed below:

Mol	Chain	Res	Type	Atoms	Z	Observed(°)	Ideal(°)
3	A	701	NAP	O7N-C7N-C3N	-4.31	114.47	119.63
3	A	701	NAP	C1B-N9A-C4A	-3.97	119.67	126.64
2	A	700	FAD	C5A-C6A-N6A	3.80	126.13	120.35
3	A	701	NAP	C2N-C3N-C4N	3.79	122.55	118.26
2	A	700	FAD	N3A-C2A-N1A	-3.30	123.53	128.68
3	A	701	NAP	O3X-P2B-O2X	3.21	119.90	107.64
3	A	701	NAP	N3A-C2A-N1A	-3.20	123.67	128.68
3	A	701	NAP	N6A-C6A-N1A	3.17	125.16	118.57

*Continued on next page...*

Continued from previous page...

Mol	Chain	Res	Type	Atoms	Z	Observed(°)	Ideal(°)
3	A	701	NAP	C3B-C2B-C1B	-3.10	97.06	102.89
2	A	700	FAD	C4X-C10-N10	2.70	120.42	116.48
3	A	701	NAP	PN-O3-PA	-2.55	124.07	132.83
2	A	700	FAD	O4-C4-C4X	-2.54	119.87	126.60
3	A	701	NAP	C5A-C6A-N6A	-2.51	116.53	120.35
4	A	1543	P6G	O7-C8-C9	2.42	120.68	110.07
3	A	701	NAP	O7N-C7N-N7N	2.40	125.99	122.58
2	A	700	FAD	C4A-C5A-N7A	-2.37	106.93	109.40
3	A	701	NAP	C3N-C2N-N1N	-2.31	118.17	120.43
2	A	700	FAD	C4X-C10-N1	-2.22	119.57	124.73
3	A	701	NAP	O4B-C4B-C3B	2.20	109.48	105.11
2	A	700	FAD	C1'-C2'-C3'	2.07	115.57	109.79
3	A	701	NAP	O4B-C4B-C5B	-2.06	102.59	109.37
3	A	701	NAP	O2X-P2B-O2B	-2.05	96.82	105.99
2	A	700	FAD	C5X-N5-C4X	-2.03	114.70	118.07
2	A	700	FAD	C9A-N10-C10	-2.03	117.61	120.77
2	A	700	FAD	C4X-C4-N3	2.02	118.33	113.19
3	A	701	NAP	O2D-C2D-C3D	2.01	118.33	111.82

There are no chirality outliers.

All (13) torsion outliers are listed below:

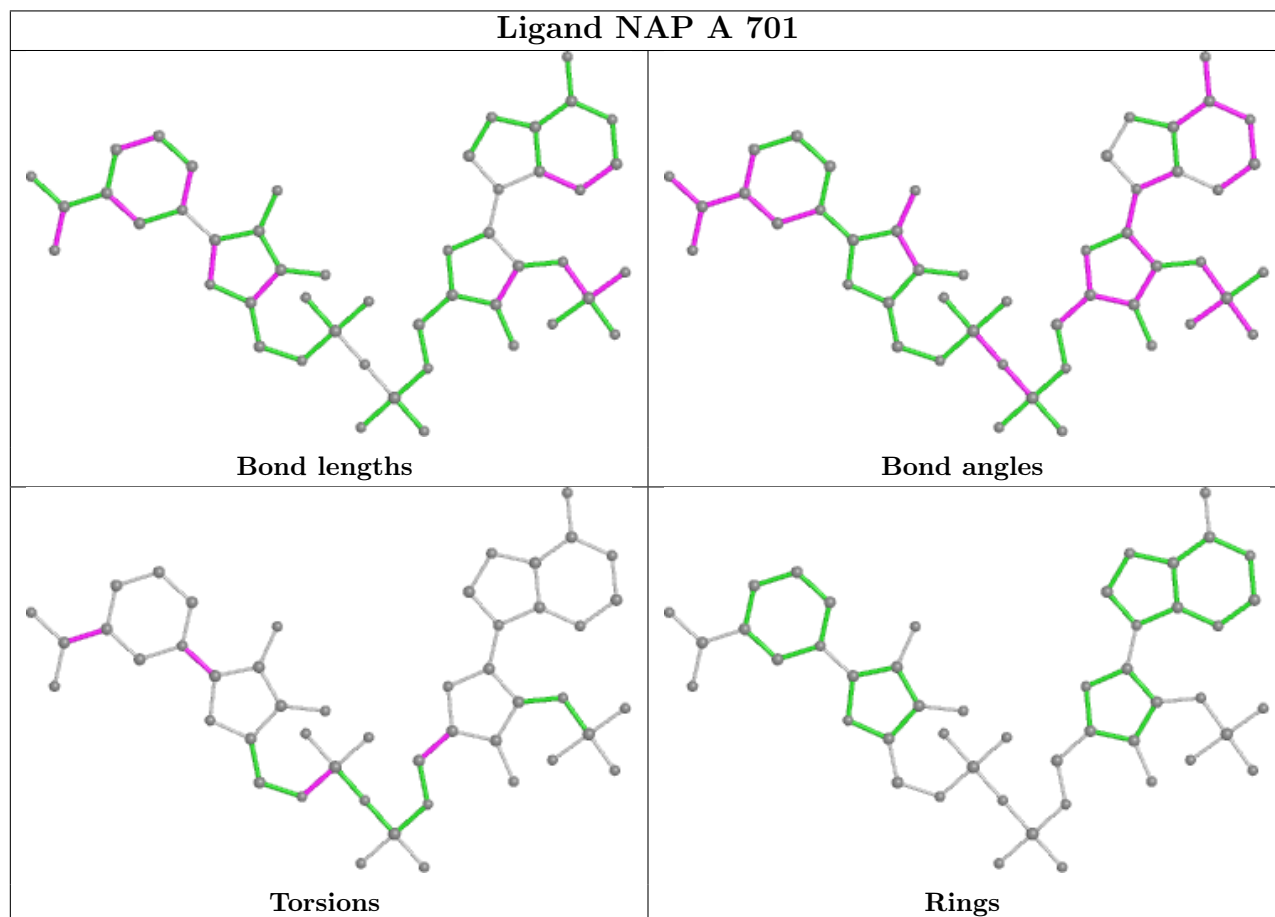
Mol	Chain	Res	Type	Atoms
2	A	700	FAD	C2'-C1'-N10-C10
2	A	700	FAD	N10-C1'-C2'-O2'
2	A	700	FAD	N10-C1'-C2'-C3'
3	A	701	NAP	O4D-C1D-N1N-C2N
4	A	1543	P6G	C9-C8-O7-C6
4	A	1543	P6G	O7-C8-C9-O10
4	A	1543	P6G	O1-C2-C3-O4
4	A	1544	P6G	C9-C8-O7-C6
4	A	1543	P6G	C5-C6-O7-C8
3	A	701	NAP	C2N-C3N-C7N-N7N
3	A	701	NAP	O4B-C4B-C5B-O5B
3	A	701	NAP	C5D-O5D-PN-O3
2	A	700	FAD	O4B-C4B-C5B-O5B

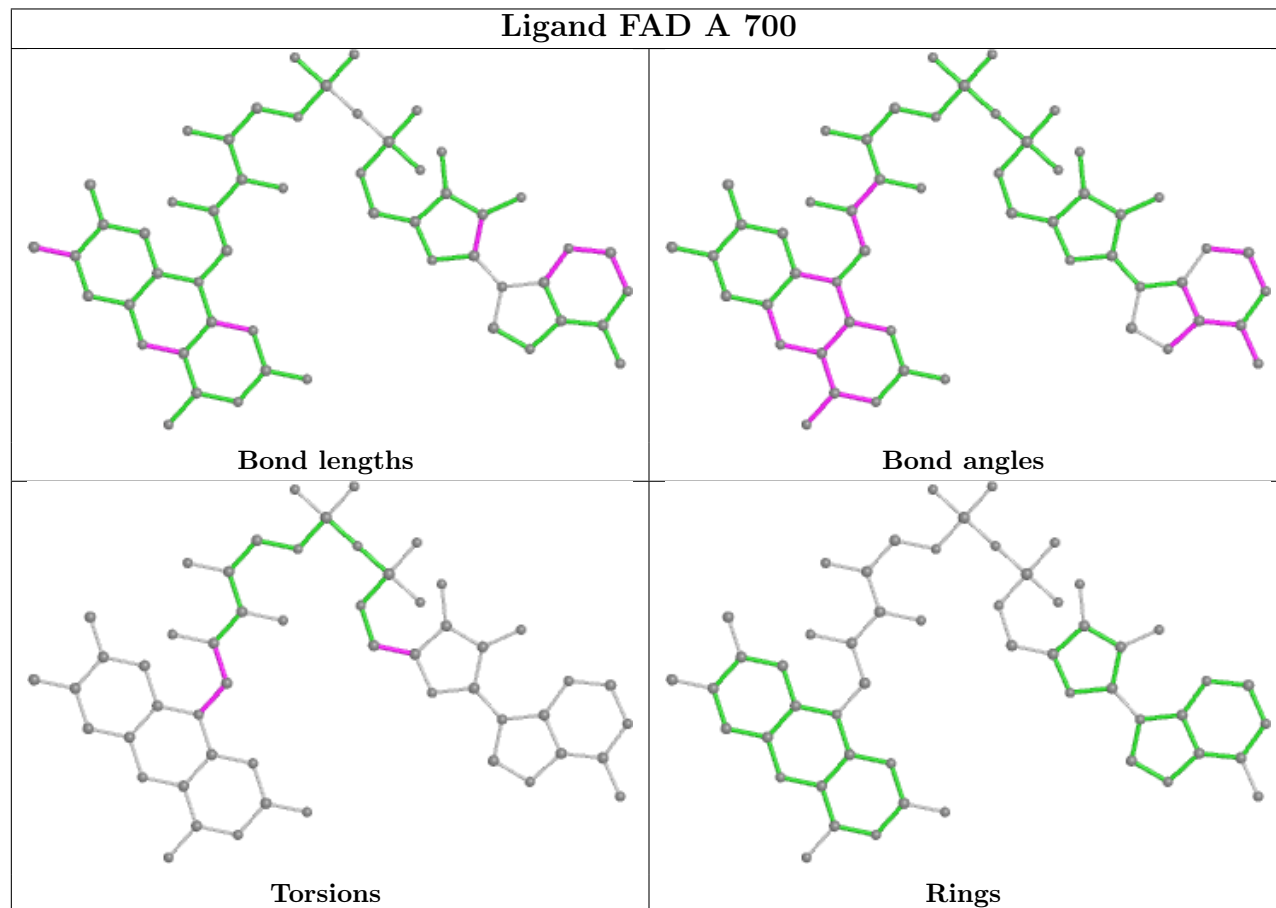
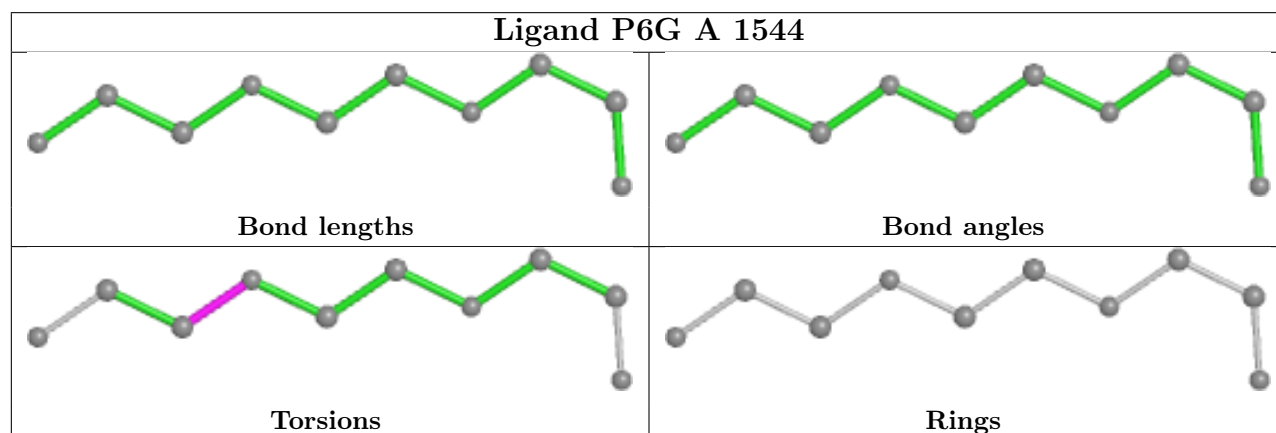
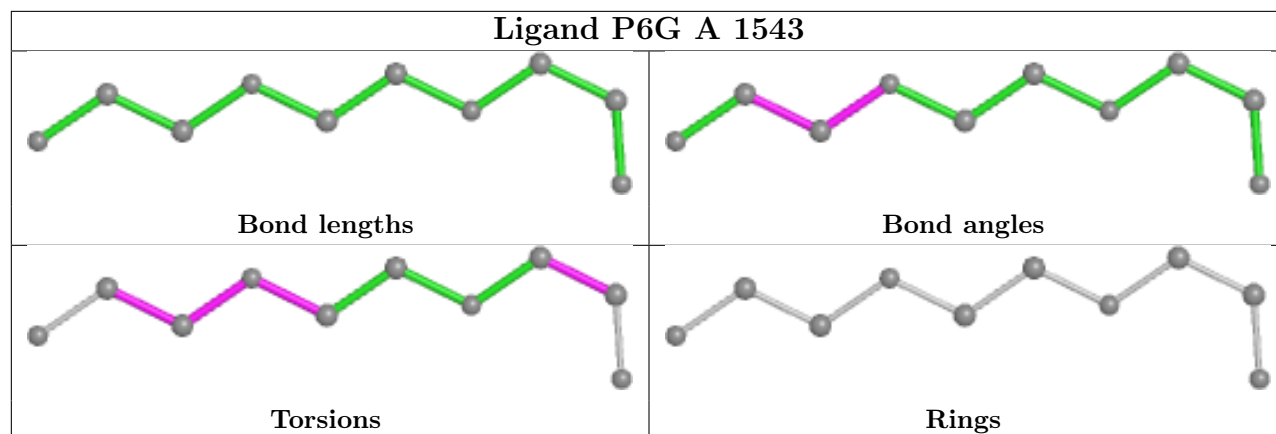
There are no ring outliers.

4 monomers are involved in 7 short contacts:

Mol	Chain	Res	Type	Clashes	Symm-Clashes
3	A	701	NAP	1	0
4	A	1543	P6G	4	0
4	A	1544	P6G	1	0
2	A	700	FAD	1	0

The following is a two-dimensional graphical depiction of Mogul quality analysis of bond lengths, bond angles, torsion angles, and ring geometry for all instances of the Ligand of Interest. In addition, ligands with molecular weight > 250 and outliers as shown on the validation Tables will also be included. For torsion angles, if less than 5% of the Mogul distribution of torsion angles is within 10 degrees of the torsion angle in question, then that torsion angle is considered an outlier. Any bond that is central to one or more torsion angles identified as an outlier by Mogul will be highlighted in the graph. For rings, the root-mean-square deviation (RMSD) between the ring in question and similar rings identified by Mogul is calculated over all ring torsion angles. If the average RMSD is greater than 60 degrees and the minimal RMSD between the ring in question and any Mogul-identified rings is also greater than 60 degrees, then that ring is considered an outlier. The outliers are highlighted in purple. The color gray indicates Mogul did not find sufficient equivalents in the CSD to analyse the geometry.







## 5.7 Other polymers [i](#)

There are no such residues in this entry.

## 5.8 Polymer linkage issues [i](#)

There are no chain breaks in this entry.

## 6 Fit of model and data [i](#)

### 6.1 Protein, DNA and RNA chains [i](#)

In the following table, the column labelled ‘#RSRZ > 2’ contains the number (and percentage) of RSRZ outliers, followed by percent RSRZ outliers for the chain as percentile scores relative to all X-ray entries and entries of similar resolution. The OWAB column contains the minimum, median, 95<sup>th</sup> percentile and maximum values of the occupancy-weighted average B-factor per residue. The column labelled ‘Q < 0.9’ lists the number of (and percentage) of residues with an average occupancy less than 0.9.

Mol	Chain	Analysed	<RSRZ>	#RSRZ>2	OWAB(Å <sup>2</sup> )	Q<0.9
1	A	532/542 (98%)	-0.28	2 (0%) 92 94	17, 27, 44, 64	0

All (2) RSRZ outliers are listed below:

Mol	Chain	Res	Type	RSRZ
1	A	161	PHE	3.1
1	A	128	THR	2.3

### 6.2 Non-standard residues in protein, DNA, RNA chains [i](#)

There are no non-standard protein/DNA/RNA residues in this entry.

### 6.3 Carbohydrates [i](#)

There are no monosaccharides in this entry.

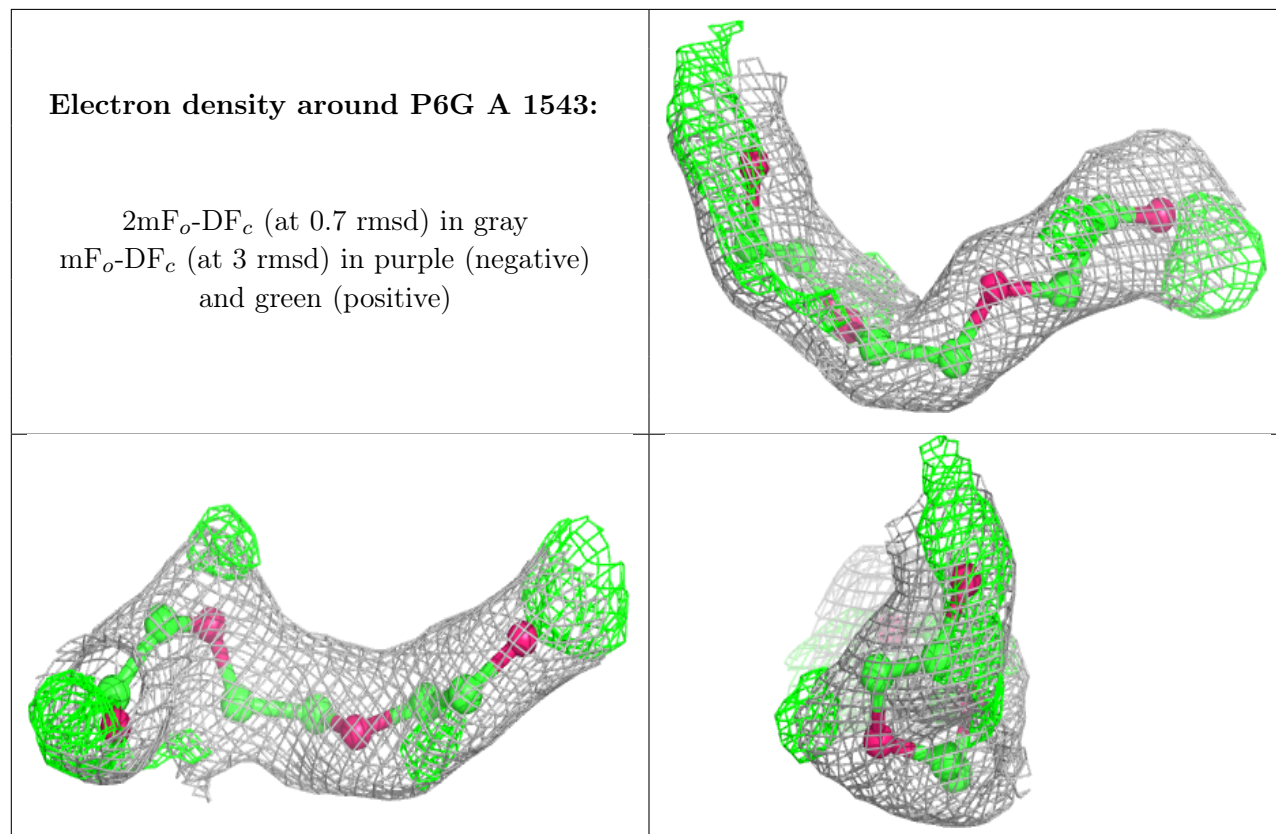
### 6.4 Ligands [i](#)

In the following table, the Atoms column lists the number of modelled atoms in the group and the number defined in the chemical component dictionary. The B-factors column lists the minimum, median, 95<sup>th</sup> percentile and maximum values of B factors of atoms in the group. The column labelled ‘Q < 0.9’ lists the number of atoms with occupancy less than 0.9.

Mol	Type	Chain	Res	Atoms	RSCC	RSR	B-factors(Å <sup>2</sup> )	Q<0.9
4	P6G	A	1543	10/19	0.82	0.21	23,42,50,54	1
4	P6G	A	1544	10/19	0.91	0.11	40,45,50,54	0
2	FAD	A	700	53/53	0.98	0.07	15,19,24,32	0
3	NAP	A	701	48/48	0.98	0.07	20,23,30,33	0

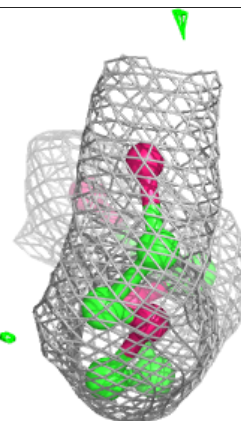
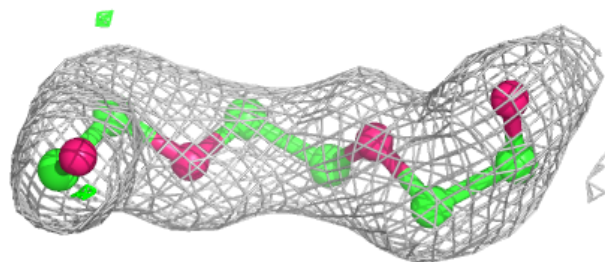
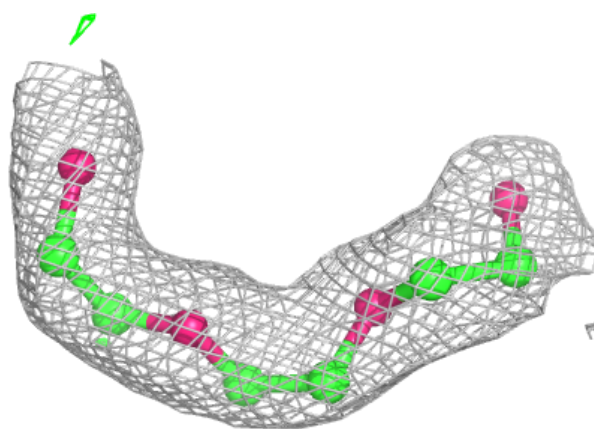
The following is a graphical depiction of the model fit to experimental electron density of all

instances of the Ligand of Interest. In addition, ligands with molecular weight > 250 and outliers as shown on the geometry validation Tables will also be included. Each fit is shown from different orientation to approximate a three-dimensional view.

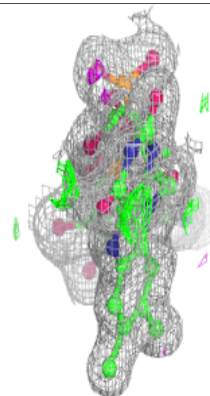
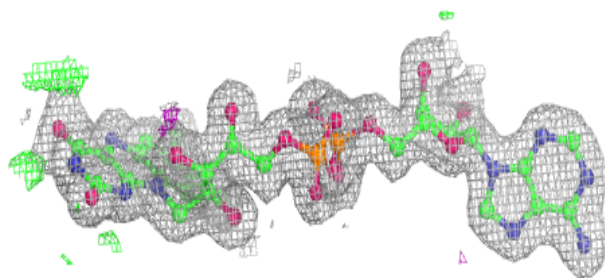
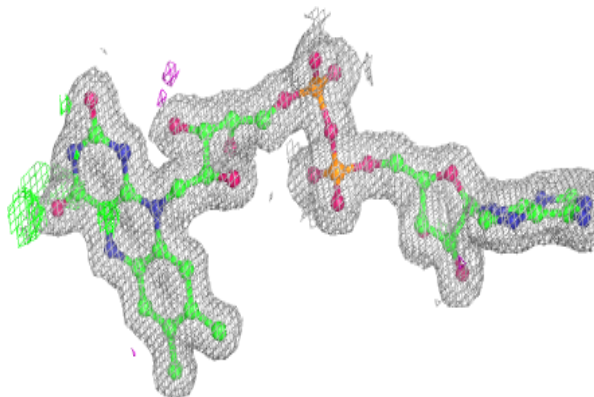


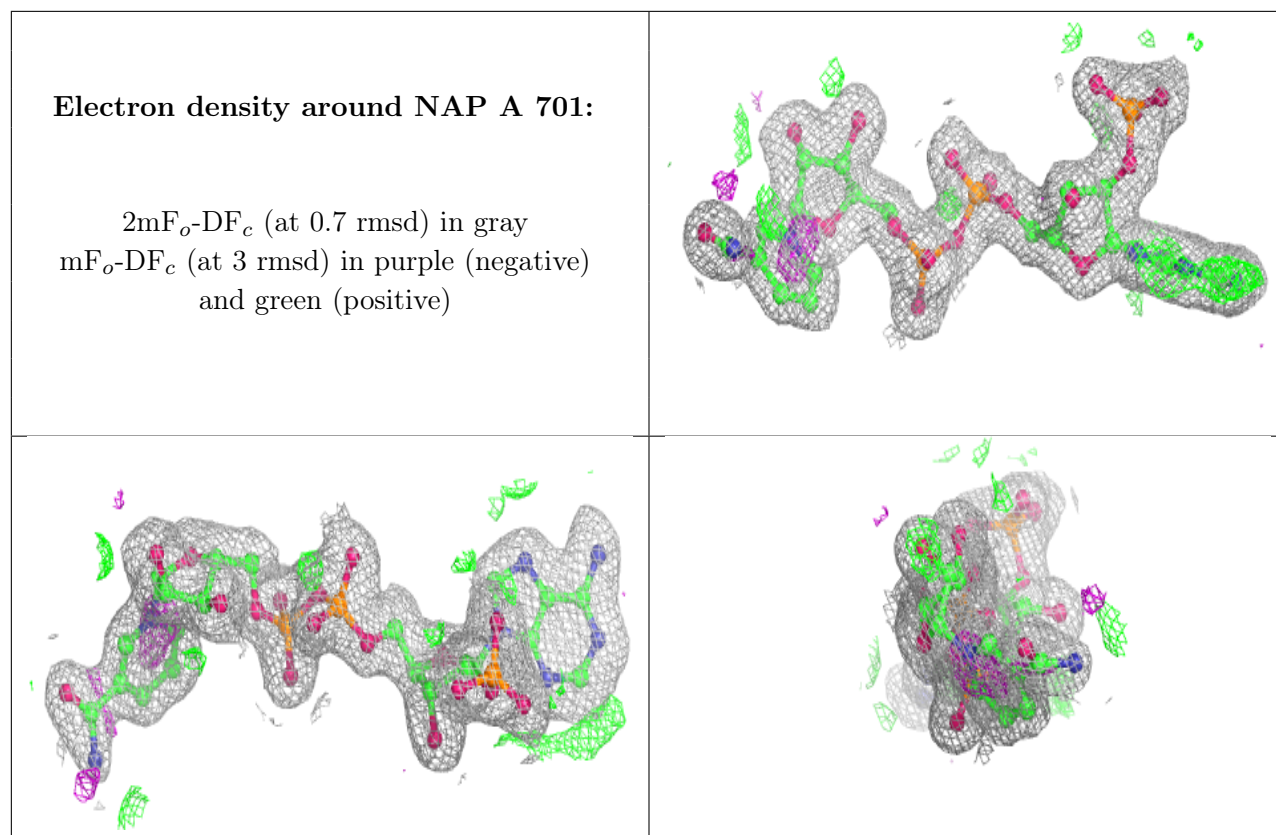
**Electron density around P6G A 1544:**

$2mF_o-DF_c$  (at 0.7 rmsd) in gray  
 $mF_o-DF_c$  (at 3 rmsd) in purple (negative)  
and green (positive)

**Electron density around FAD A 700:**

$2mF_o-DF_c$  (at 0.7 rmsd) in gray  
 $mF_o-DF_c$  (at 3 rmsd) in purple (negative)  
and green (positive)





## 6.5 Other polymers [i](#)

There are no such residues in this entry.