



# wwPDB X-ray Structure Validation Summary Report ⓘ

Oct 31, 2023 – 10:39 AM JST

PDB ID : 5BXS  
Title : LNBbase in complex with LNB-NHAcCAS  
Authors : Ito, T.; Arakawa, T.; Fushinobu, S.  
Deposited on : 2015-06-09  
Resolution : 2.20 Å(reported)

This is a wwPDB X-ray Structure Validation Summary Report for a publicly released PDB entry.

We welcome your comments at [validation@mail.wwpdb.org](mailto:validation@mail.wwpdb.org)

A user guide is available at

<https://www.wwpdb.org/validation/2017/XrayValidationReportHelp>

with specific help available everywhere you see the ⓘ symbol.

The types of validation reports are described at

<http://www.wwpdb.org/validation/2017/FAQs#types>.

---

The following versions of software and data (see [references ⓘ](#)) were used in the production of this report:

MolProbity : 4.02b-467  
Mogul : 1.8.5 (274361), CSD as541be (2020)  
Xtriage (Phenix) : 1.13  
EDS : 2.36  
Percentile statistics : 20191225.v01 (using entries in the PDB archive December 25th 2019)  
Refmac : 5.8.0158  
CCP4 : 7.0.044 (Gargrove)  
Ideal geometry (proteins) : Engh & Huber (2001)  
Ideal geometry (DNA, RNA) : Parkinson et al. (1996)  
Validation Pipeline (wwPDB-VP) : 2.36

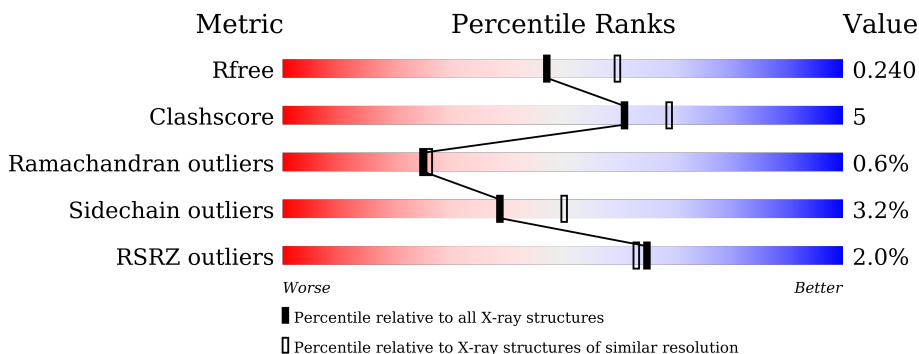
# 1 Overall quality at a glance

The following experimental techniques were used to determine the structure:

*X-RAY DIFFRACTION*

The reported resolution of this entry is 2.20 Å.

Percentile scores (ranging between 0-100) for global validation metrics of the entry are shown in the following graphic. The table shows the number of entries on which the scores are based.



Metric	Whole archive (#Entries)	Similar resolution (#Entries, resolution range(Å))
$R_{free}$	130704	4898 (2.20-2.20)
Clashscore	141614	5594 (2.20-2.20)
Ramachandran outliers	138981	5503 (2.20-2.20)
Sidechain outliers	138945	5504 (2.20-2.20)
RSRZ outliers	127900	4800 (2.20-2.20)

The table below summarises the geometric issues observed across the polymeric chains and their fit to the electron density. The red, orange, yellow and green segments of the lower bar indicate the fraction of residues that contain outliers for  $\geq 3$ , 2, 1 and 0 types of geometric quality criteria respectively. A grey segment represents the fraction of residues that are not modelled. The numeric value for each fraction is indicated below the corresponding segment, with a dot representing fractions  $\leq 5\%$ . The upper red bar (where present) indicates the fraction of residues that have poor fit to the electron density. The numeric value is given above the bar.

Mol	Chain	Length	Quality of chain
1	A	644	 2% 88% 9% ..
1	B	644	 2% 86% 11% ..

## 2 Entry composition [i](#)

There are 5 unique types of molecules in this entry. The entry contains 10407 atoms, of which 0 are hydrogens and 0 are deuteriums.

In the tables below, the ZeroOcc column contains the number of atoms modelled with zero occupancy, the AltConf column contains the number of residues with at least one atom in alternate conformation and the Trace column contains the number of residues modelled with at most 2 atoms.

- Molecule 1 is a protein called Lacto-N-biosidase.

Mol	Chain	Residues	Atoms					ZeroOcc	AltConf	Trace
			Total	C	N	O	S			
1	A	633	4969	3132	846	974	17	0	0	0
1	B	632	4963	3129	845	972	17	0	0	0

There are 42 discrepancies between the modelled and reference sequences:

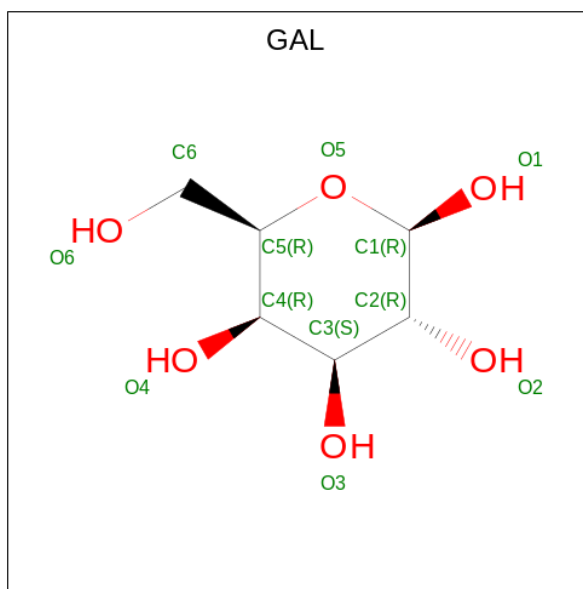
Chain	Residue	Modelled	Actual	Comment	Reference
A	20	MET	-	initiating methionine	UNP B3TLD6
A	21	GLY	-	expression tag	UNP B3TLD6
A	22	SER	-	expression tag	UNP B3TLD6
A	23	SER	-	expression tag	UNP B3TLD6
A	24	HIS	-	expression tag	UNP B3TLD6
A	25	HIS	-	expression tag	UNP B3TLD6
A	26	HIS	-	expression tag	UNP B3TLD6
A	27	HIS	-	expression tag	UNP B3TLD6
A	28	HIS	-	expression tag	UNP B3TLD6
A	29	HIS	-	expression tag	UNP B3TLD6
A	30	SER	-	expression tag	UNP B3TLD6
A	31	SER	-	expression tag	UNP B3TLD6
A	32	GLY	-	expression tag	UNP B3TLD6
A	33	LEU	-	expression tag	UNP B3TLD6
A	34	VAL	-	expression tag	UNP B3TLD6
A	35	PRO	-	expression tag	UNP B3TLD6
A	36	ARG	-	expression tag	UNP B3TLD6
A	37	GLY	-	expression tag	UNP B3TLD6
A	38	SER	-	expression tag	UNP B3TLD6
A	39	HIS	-	expression tag	UNP B3TLD6
A	40	MET	-	expression tag	UNP B3TLD6
B	20	MET	-	initiating methionine	UNP B3TLD6
B	21	GLY	-	expression tag	UNP B3TLD6
B	22	SER	-	expression tag	UNP B3TLD6
B	23	SER	-	expression tag	UNP B3TLD6

*Continued on next page...*

Continued from previous page...

Chain	Residue	Modelled	Actual	Comment	Reference
B	24	HIS	-	expression tag	UNP B3TLD6
B	25	HIS	-	expression tag	UNP B3TLD6
B	26	HIS	-	expression tag	UNP B3TLD6
B	27	HIS	-	expression tag	UNP B3TLD6
B	28	HIS	-	expression tag	UNP B3TLD6
B	29	HIS	-	expression tag	UNP B3TLD6
B	30	SER	-	expression tag	UNP B3TLD6
B	31	SER	-	expression tag	UNP B3TLD6
B	32	GLY	-	expression tag	UNP B3TLD6
B	33	LEU	-	expression tag	UNP B3TLD6
B	34	VAL	-	expression tag	UNP B3TLD6
B	35	PRO	-	expression tag	UNP B3TLD6
B	36	ARG	-	expression tag	UNP B3TLD6
B	37	GLY	-	expression tag	UNP B3TLD6
B	38	SER	-	expression tag	UNP B3TLD6
B	39	HIS	-	expression tag	UNP B3TLD6
B	40	MET	-	expression tag	UNP B3TLD6

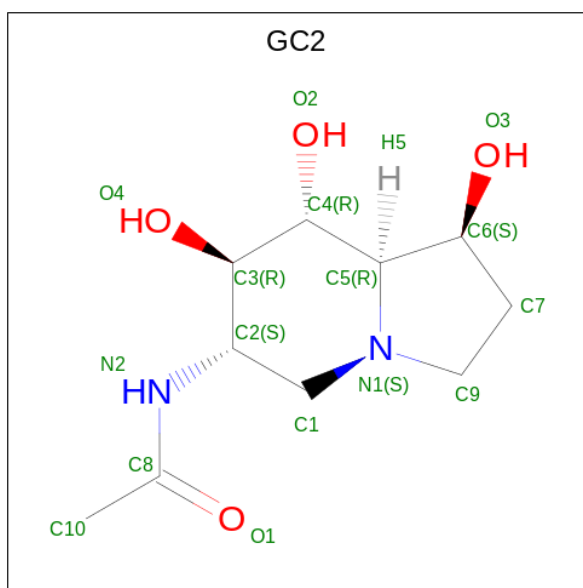
- Molecule 2 is beta-D-galactopyranose (three-letter code: GAL) (formula: C<sub>6</sub>H<sub>12</sub>O<sub>6</sub>).



Mol	Chain	Residues	Atoms			ZeroOcc	AltConf
2	A	1	Total	C	O	0	0
			11	6	5		
2	B	1	Total	C	O	0	0
			11	6	5		

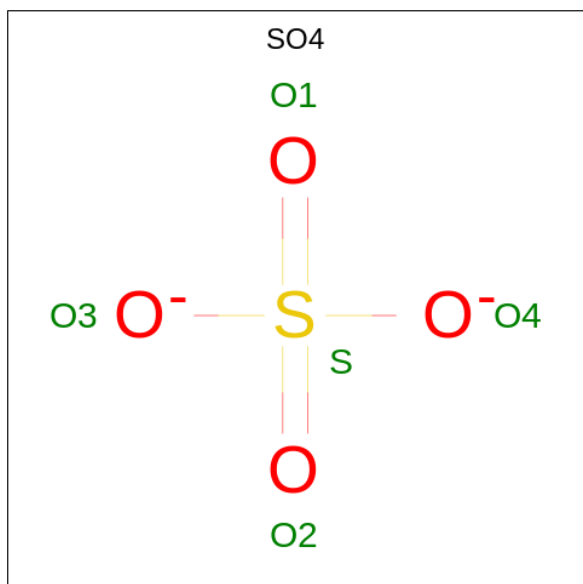
- Molecule 3 is 6-ACETAMIDO-6-DEOXY-CASTANOSPERMINE (three-letter code: GC2)

(formula: C<sub>10</sub>H<sub>18</sub>N<sub>2</sub>O<sub>4</sub>).



Mol	Chain	Residues	Atoms			ZeroOcc	AltConf	
			Total	C	N			O
3	A	1	16	10	2	4	0	0
3	B	1	16	10	2	4	0	0

- Molecule 4 is SULFATE ION (three-letter code: SO<sub>4</sub>) (formula: O<sub>4</sub>S).



Mol	Chain	Residues	Atoms		ZeroOcc	AltConf
			Total	O S		
4	A	1	5	4 1	0	0

*Continued on next page...*

*Continued from previous page...*

Mol	Chain	Residues	Atoms			ZeroOcc	AltConf
4	B	1	Total	O	S	0	0
			5	4	1		

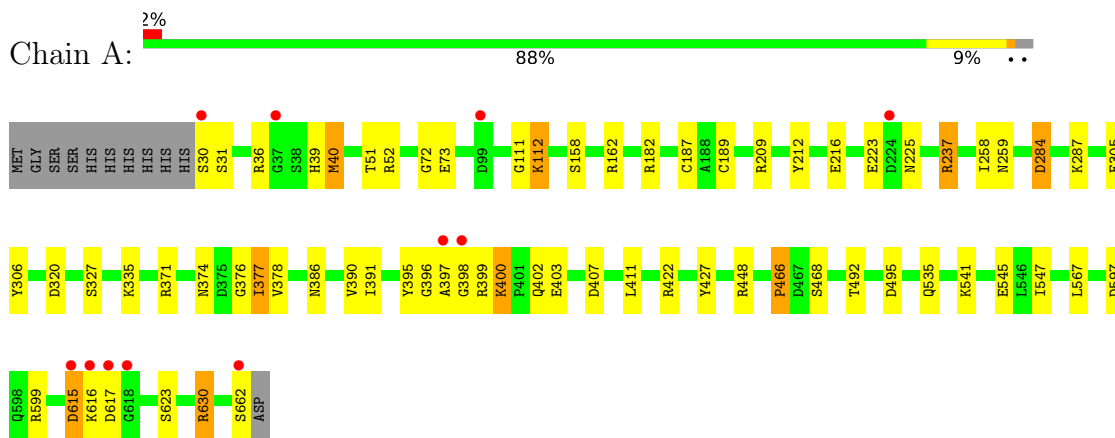
- Molecule 5 is water.

Mol	Chain	Residues	Atoms		ZeroOcc	AltConf
5	A	200	Total	O	0	0
			200	200		
5	B	211	Total	O	0	0
			211	211		

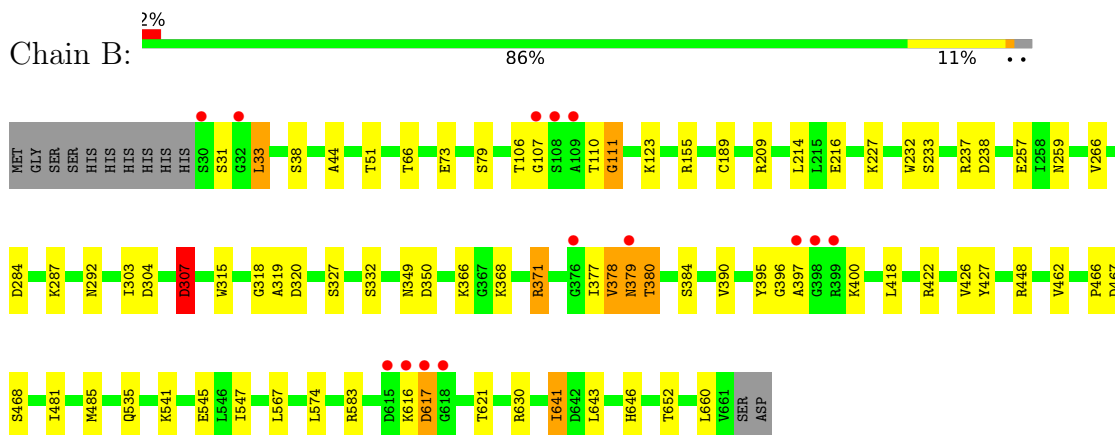
### 3 Residue-property plots [i](#)

These plots are drawn for all protein, RNA, DNA and oligosaccharide chains in the entry. The first graphic for a chain summarises the proportions of the various outlier classes displayed in the second graphic. The second graphic shows the sequence view annotated by issues in geometry and electron density. Residues are color-coded according to the number of geometric quality criteria for which they contain at least one outlier: green = 0, yellow = 1, orange = 2 and red = 3 or more. A red dot above a residue indicates a poor fit to the electron density ( $RSRZ > 2$ ). Stretches of 2 or more consecutive residues without any outlier are shown as a green connector. Residues present in the sample, but not in the model, are shown in grey.

- Molecule 1: Lacto-N-biosidase



- Molecule 1: Lacto-N-biosidase



## 4 Data and refinement statistics

Property	Value	Source
Space group	P 21 21 2	Depositor
Cell constants a, b, c, $\alpha$ , $\beta$ , $\gamma$	116.68Å 131.70Å 104.53Å 90.00° 90.00° 90.00°	Depositor
Resolution (Å)	44.85 – 2.20 38.93 – 2.20	Depositor EDS
% Data completeness (in resolution range)	99.7 (44.85-2.20) 99.7 (38.93-2.20)	Depositor EDS
$R_{merge}$	0.17	Depositor
$R_{sym}$	(Not available)	Depositor
$\langle I/\sigma(I) \rangle$ <sup>1</sup>	3.27 (at 2.20Å)	Xtrriage
Refinement program	REFMAC 5.8.0049	Depositor
R, $R_{free}$	0.191 , 0.238 0.198 , 0.240	Depositor DCC
$R_{free}$ test set	4124 reflections (5.00%)	wwPDB-VP
Wilson B-factor (Å <sup>2</sup> )	19.9	Xtrriage
Anisotropy	0.038	Xtrriage
Bulk solvent $k_{sol}$ (e/Å <sup>3</sup> ), $B_{sol}$ (Å <sup>2</sup> )	0.39 , 38.6	EDS
L-test for twinning <sup>2</sup>	$\langle  L  \rangle = 0.50$ , $\langle L^2 \rangle = 0.33$	Xtrriage
Estimated twinning fraction	No twinning to report.	Xtrriage
$F_o, F_c$ correlation	0.94	EDS
Total number of atoms	10407	wwPDB-VP
Average B, all atoms (Å <sup>2</sup> )	21.0	wwPDB-VP

Xtrriage's analysis on translational NCS is as follows: *The largest off-origin peak in the Patterson function is 6.50% of the height of the origin peak. No significant pseudotranslation is detected.*

<sup>1</sup>Intensities estimated from amplitudes.

<sup>2</sup>Theoretical values of  $\langle |L| \rangle$ ,  $\langle L^2 \rangle$  for acentric reflections are 0.5, 0.333 respectively for untwinned datasets, and 0.375, 0.2 for perfectly twinned datasets.



## 5 Model quality [i](#)

### 5.1 Standard geometry [i](#)

Bond lengths and bond angles in the following residue types are not validated in this section: GAL, GC2, SO4

The Z score for a bond length (or angle) is the number of standard deviations the observed value is removed from the expected value. A bond length (or angle) with  $|Z| > 5$  is considered an outlier worth inspection. RMSZ is the root-mean-square of all Z scores of the bond lengths (or angles).

Mol	Chain	Bond lengths		Bond angles	
		RMSZ	# $ Z  > 5$	RMSZ	# $ Z  > 5$
1	A	0.87	1/5078 (0.0%)	0.91	10/6891 (0.1%)
1	B	0.86	0/5072	0.90	5/6883 (0.1%)
All	All	0.86	1/10150 (0.0%)	0.91	15/13774 (0.1%)

Chiral center outliers are detected by calculating the chiral volume of a chiral center and verifying if the center is modelled as a planar moiety or with the opposite hand. A planarity outlier is detected by checking planarity of atoms in a peptide group, atoms in a mainchain group or atoms of a sidechain that are expected to be planar.

Mol	Chain	#Chirality outliers	#Planarity outliers
1	A	0	1
1	B	0	3
All	All	0	4

All (1) bond length outliers are listed below:

Mol	Chain	Res	Type	Atoms	Z	Observed(Å)	Ideal(Å)
1	A	597	ASP	CB-CG	6.44	1.65	1.51

The worst 5 of 15 bond angle outliers are listed below:

Mol	Chain	Res	Type	Atoms	Z	Observed(°)	Ideal(°)
1	A	237	ARG	NE-CZ-NH2	-6.95	116.82	120.30
1	A	52	ARG	NE-CZ-NH1	6.50	123.55	120.30
1	B	237	ARG	NE-CZ-NH2	6.41	123.50	120.30
1	A	284	ASP	CB-CG-OD1	5.51	123.25	118.30
1	B	448	ARG	NE-CZ-NH1	5.50	123.05	120.30

There are no chirality outliers.

All (4) planarity outliers are listed below:

Mol	Chain	Res	Type	Group
1	A	468	SER	Peptide
1	B	378	VAL	Peptide
1	B	379	ASN	Peptide
1	B	468	SER	Peptide

## 5.2 Too-close contacts [i](#)

In the following table, the Non-H and H(model) columns list the number of non-hydrogen atoms and hydrogen atoms in the chain respectively. The H(added) column lists the number of hydrogen atoms added and optimized by MolProbity. The Clashes column lists the number of clashes within the asymmetric unit, whereas Symm-Clashes lists symmetry-related clashes.

Mol	Chain	Non-H	H(model)	H(added)	Clashes	Symm-Clashes
1	A	4969	0	4843	42	0
1	B	4963	0	4838	51	0
2	A	11	0	10	1	0
2	B	11	0	10	1	0
3	A	16	0	17	2	0
3	B	16	0	17	2	0
4	A	5	0	0	0	0
4	B	5	0	0	1	0
5	A	200	0	0	4	0
5	B	211	0	0	2	0
All	All	10407	0	9735	89	0

The all-atom clashscore is defined as the number of clashes found per 1000 atoms (including hydrogen atoms). The all-atom clashscore for this structure is 5.

The worst 5 of 89 close contacts within the same asymmetric unit are listed below, sorted by their clash magnitude.

Atom-1	Atom-2	Interatomic distance (Å)	Clash overlap (Å)
1:B:379:ASN:HB3	1:B:380:THR:HA	1.15	1.13
1:B:378:VAL:HG23	1:B:379:ASN:HB2	1.25	1.09
1:B:379:ASN:HB3	1:B:380:THR:CA	1.82	1.07
1:A:40:MET:HG3	1:A:112:LYS:HE3	1.48	0.95
1:B:378:VAL:HG23	1:B:379:ASN:CB	2.02	0.90

There are no symmetry-related clashes.

## 5.3 Torsion angles [i](#)

### 5.3.1 Protein backbone [i](#)

In the following table, the Percentiles column shows the percent Ramachandran outliers of the chain as a percentile score with respect to all X-ray entries followed by that with respect to entries of similar resolution.

The Analysed column shows the number of residues for which the backbone conformation was analysed, and the total number of residues.

Mol	Chain	Analysed	Favoured	Allowed	Outliers	Percentiles	
1	A	631/644 (98%)	606 (96%)	21 (3%)	4 (1%)	25	26
1	B	630/644 (98%)	599 (95%)	27 (4%)	4 (1%)	25	26
All	All	1261/1288 (98%)	1205 (96%)	48 (4%)	8 (1%)	25	26

5 of 8 Ramachandran outliers are listed below:

Mol	Chain	Res	Type
1	B	111	GLY
1	A	396	GLY
1	B	107	GLY
1	B	396	GLY
1	B	617	ASP

### 5.3.2 Protein sidechains [i](#)

In the following table, the Percentiles column shows the percent sidechain outliers of the chain as a percentile score with respect to all X-ray entries followed by that with respect to entries of similar resolution.

The Analysed column shows the number of residues for which the sidechain conformation was analysed, and the total number of residues.

Mol	Chain	Analysed	Rotameric	Outliers	Percentiles	
1	A	530/540 (98%)	514 (97%)	16 (3%)	41	53
1	B	529/540 (98%)	511 (97%)	18 (3%)	37	47
All	All	1059/1080 (98%)	1025 (97%)	34 (3%)	39	50

5 of 34 residues with a non-rotameric sidechain are listed below:

Mol	Chain	Res	Type
1	B	384	SER

*Continued on next page...*

*Continued from previous page...*

Mol	Chain	Res	Type
1	B	541	LYS
1	B	641	ILE
1	A	567	LEU
1	A	541	LYS

Sometimes sidechains can be flipped to improve hydrogen bonding and reduce clashes. All (2) such sidechains are listed below:

Mol	Chain	Res	Type
1	B	349	ASN
1	B	437	ASN

### 5.3.3 RNA [i](#)

There are no RNA molecules in this entry.

## 5.4 Non-standard residues in protein, DNA, RNA chains [i](#)

There are no non-standard protein/DNA/RNA residues in this entry.

## 5.5 Carbohydrates [i](#)

There are no monosaccharides in this entry.

## 5.6 Ligand geometry [i](#)

6 ligands are modelled in this entry.

In the following table, the Counts columns list the number of bonds (or angles) for which Mogul statistics could be retrieved, the number of bonds (or angles) that are observed in the model and the number of bonds (or angles) that are defined in the Chemical Component Dictionary. The Link column lists molecule types, if any, to which the group is linked. The Z score for a bond length (or angle) is the number of standard deviations the observed value is removed from the expected value. A bond length (or angle) with  $|Z| > 2$  is considered an outlier worth inspection. RMSZ is the root-mean-square of all Z scores of the bond lengths (or angles).

Mol	Type	Chain	Res	Link	Bond lengths			Bond angles		
					Counts	RMSZ	$\# Z  > 2$	Counts	RMSZ	$\# Z  > 2$
4	SO4	B	703	-	4,4,4	0.49	0	6,6,6	0.53	0
4	SO4	A	703	-	4,4,4	0.30	0	6,6,6	0.58	0

Mol	Type	Chain	Res	Link	Bond lengths			Bond angles		
					Counts	RMSZ	# Z  > 2	Counts	RMSZ	# Z  > 2
2	GAL	B	701	3	11,11,12	1.02	0	15,15,17	1.72	5 (33%)
3	GC2	B	702	2	16,17,17	1.90	4 (25%)	17,25,25	1.41	1 (5%)
3	GC2	A	702	2	16,17,17	1.15	0	17,25,25	1.66	5 (29%)
2	GAL	A	701	3	11,11,12	0.92	0	15,15,17	1.09	1 (6%)

In the following table, the Chirals column lists the number of chiral outliers, the number of chiral centers analysed, the number of these observed in the model and the number defined in the Chemical Component Dictionary. Similar counts are reported in the Torsion and Rings columns. '-' means no outliers of that kind were identified.

Mol	Type	Chain	Res	Link	Chirals	Torsions	Rings
3	GC2	B	702	2	-	1/4/33/33	0/2/2/2
3	GC2	A	702	2	-	1/4/33/33	0/2/2/2
2	GAL	A	701	3	-	0/2/19/22	0/1/1/1
2	GAL	B	701	3	-	0/2/19/22	0/1/1/1

All (4) bond length outliers are listed below:

Mol	Chain	Res	Type	Atoms	Z	Observed(Å)	Ideal(Å)
3	B	702	GC2	C6-C5	-4.59	1.49	1.54
3	B	702	GC2	C4-C5	-3.20	1.48	1.53
3	B	702	GC2	O3-C6	-2.30	1.38	1.43
3	B	702	GC2	C2-N2	2.13	1.49	1.46

The worst 5 of 12 bond angle outliers are listed below:

Mol	Chain	Res	Type	Atoms	Z	Observed(°)	Ideal(°)
3	B	702	GC2	O3-C6-C7	-4.50	100.81	111.54
3	A	702	GC2	C7-C6-C5	3.08	106.65	102.80
2	B	701	GAL	C6-C5-C4	3.07	120.19	113.00
3	A	702	GC2	O2-C4-C3	2.91	117.07	110.35
3	A	702	GC2	C9-C7-C6	2.54	107.70	103.74

There are no chirality outliers.

All (2) torsion outliers are listed below:

Mol	Chain	Res	Type	Atoms
3	B	702	GC2	C1-C2-N2-C8
3	A	702	GC2	C1-C2-N2-C8

There are no ring outliers.

5 monomers are involved in 7 short contacts:

Mol	Chain	Res	Type	Clashes	Symm-Clashes
4	B	703	SO4	1	0
2	B	701	GAL	1	0
3	B	702	GC2	2	0
3	A	702	GC2	2	0
2	A	701	GAL	1	0

## 5.7 Other polymers [i](#)

There are no such residues in this entry.

## 5.8 Polymer linkage issues [i](#)

There are no chain breaks in this entry.

## 6 Fit of model and data [i](#)

### 6.1 Protein, DNA and RNA chains [i](#)

In the following table, the column labelled ‘#RSRZ > 2’ contains the number (and percentage) of RSRZ outliers, followed by percent RSRZ outliers for the chain as percentile scores relative to all X-ray entries and entries of similar resolution. The OWAB column contains the minimum, median, 95<sup>th</sup> percentile and maximum values of the occupancy-weighted average B-factor per residue. The column labelled ‘Q < 0.9’ lists the number of (and percentage) of residues with an average occupancy less than 0.9.

Mol	Chain	Analysed	<RSRZ>	#RSRZ>2	OWAB(Å <sup>2</sup> )	Q<0.9
1	A	633/644 (98%)	-0.34	11 (1%) 70 68	10, 19, 41, 73	0
1	B	632/644 (98%)	-0.32	14 (2%) 62 59	10, 19, 40, 67	0
All	All	1265/1288 (98%)	-0.33	25 (1%) 65 63	10, 19, 40, 73	0

The worst 5 of 25 RSRZ outliers are listed below:

Mol	Chain	Res	Type	RSRZ
1	B	616	LYS	5.5
1	A	617	ASP	5.1
1	B	107	GLY	5.0
1	A	618	GLY	4.8
1	B	617	ASP	4.4

### 6.2 Non-standard residues in protein, DNA, RNA chains [i](#)

There are no non-standard protein/DNA/RNA residues in this entry.

### 6.3 Carbohydrates [i](#)

There are no monosaccharides in this entry.

### 6.4 Ligands [i](#)

In the following table, the Atoms column lists the number of modelled atoms in the group and the number defined in the chemical component dictionary. The B-factors column lists the minimum, median, 95<sup>th</sup> percentile and maximum values of B factors of atoms in the group. The column labelled ‘Q < 0.9’ lists the number of atoms with occupancy less than 0.9.

Mol	Type	Chain	Res	Atoms	RSCC	RSR	B-factors( $\text{\AA}^2$ )	Q<0.9
2	GAL	A	701	11/12	0.84	0.15	26,28,31,31	0
3	GC2	A	702	16/16	0.88	0.14	21,25,28,29	0
3	GC2	B	702	16/16	0.90	0.14	23,25,27,27	0
2	GAL	B	701	11/12	0.92	0.11	20,22,27,28	0
4	SO4	A	703	5/5	0.99	0.10	24,24,27,28	0
4	SO4	B	703	5/5	0.99	0.11	19,21,24,25	0

## 6.5 Other polymers [i](#)

There are no such residues in this entry.