



Full wwPDB NMR Structure Validation Report ⓘ

Jun 3, 2023 – 11:05 AM EDT

PDB ID : 6BET
BMRB ID : 30362
Title : Solution structure of de novo macrocycle design12_ss
Authors : Shortridge, M.D.; Hosseinzadeh, P.; Pardo-Avila, F.; Varani, G.; Baker, D.
Deposited on : 2017-10-25

This is a Full wwPDB NMR Structure Validation Report for a publicly released PDB entry.

We welcome your comments at validation@mail.wwpdb.org

A user guide is available at

<https://www.wwpdb.org/validation/2017/NMRValidationReportHelp>

with specific help available everywhere you see the ⓘ symbol.

The types of validation reports are described at

<http://www.wwpdb.org/validation/2017/FAQs#types>.

The following versions of software and data (see [references ⓘ](#)) were used in the production of this report:

MolProbity : 4.02b-467
Percentile statistics : 20191225.v01 (using entries in the PDB archive December 25th 2019)
wwPDB-RCI : v_1n_11_5_13_A (Berjanski et al., 2005)
PANAV : Wang et al. (2010)
wwPDB-ShiftChecker : v1.2
BMRB Restraints Analysis : v1.2
Ideal geometry (proteins) : Engh & Huber (2001)
Ideal geometry (DNA, RNA) : Parkinson et al. (1996)
Validation Pipeline (wwPDB-VP) : 2.33

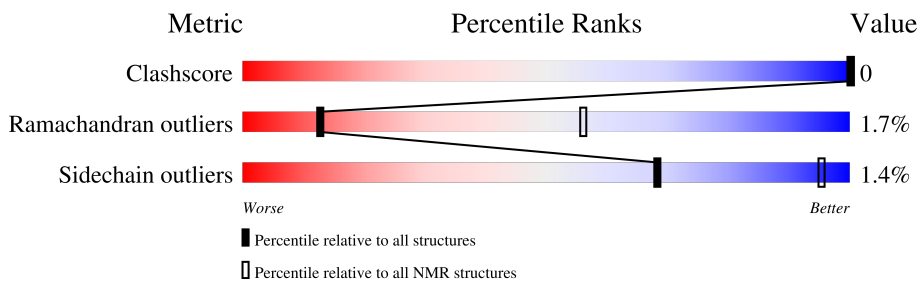
1 Overall quality at a glance

The following experimental techniques were used to determine the structure:

SOLUTION NMR

The overall completeness of chemical shifts assignment is 57%.

Percentile scores (ranging between 0-100) for global validation metrics of the entry are shown in the following graphic. The table shows the number of entries on which the scores are based.



Metric	Whole archive (#Entries)	NMR archive (#Entries)
Clashscore	158937	12864
Ramachandran outliers	154571	11451
Sidechain outliers	154315	11428

The table below summarises the geometric issues observed across the polymeric chains and their fit to the experimental data. The red, orange, yellow and green segments indicate the fraction of residues that contain outliers for ≥ 3 , 2, 1 and 0 types of geometric quality criteria. A cyan segment indicates the fraction of residues that are not part of the well-defined cores, and a grey segment represents the fraction of residues that are not modelled. The numeric value for each fraction is indicated below the corresponding segment, with a dot representing fractions $\leq 5\%$

Mol	Chain	Length	Quality of chain
1	A	12	100%

2 Ensemble composition and analysis

This entry contains 20 models.

Cyrange was unable to find well-defined residues.

Error message: The number of core atoms (7) was below the domain threshold value (8).

NmrClust was unable to cluster the ensemble.

Error message: Wrapper check: not enough residues in core to run NmrClust

3 Entry composition [i](#)

There is only 1 type of molecule in this entry. The entry contains 183 atoms, of which 91 are hydrogens and 0 are deuteriums.

- Molecule 1 is a protein called H(DPR)(DVA)CIP(DPR)E(DLY)VC(DGL).

Mol	Chain	Residues	Atoms						Trace
			Total	C	H	N	O	S	
1	A	12	183	59	91	15	16	2	0

4 Residue-property plots

4.1 Average score per residue in the NMR ensemble

These plots are provided for all protein, RNA, DNA and oligosaccharide chains in the entry. The first graphic is the same as shown in the summary in section 1 of this report. The second graphic shows the sequence where residues are colour-coded according to the number of geometric quality criteria for which they contain at least one outlier: green = 0, yellow = 1, orange = 2 and red = 3 or more. Stretches of 2 or more consecutive residues without any outliers are shown as green connectors. Residues which are classified as ill-defined in the NMR ensemble, are shown in cyan with an underline colour-coded according to the previous scheme. Residues which were present in the experimental sample, but not modelled in the final structure are shown in grey.

- Molecule 1: H(DPR)(DVA)CIP(DPR)E(DLY)VC(DGL)

Chain A:  100%


There are no outlier residues in this chain.

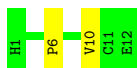
4.2 Scores per residue for each member of the ensemble

Colouring as in section 4.1 above.

4.2.1 Score per residue for model 1

- Molecule 1: H(DPR)(DVA)CIP(DPR)E(DLY)VC(DGL)

Chain A:  83% 17%



4.2.2 Score per residue for model 2

- Molecule 1: H(DPR)(DVA)CIP(DPR)E(DLY)VC(DGL)

Chain A:  100%

There are no outlier residues in this chain.

4.2.3 Score per residue for model 3

- Molecule 1: H(DPR)(DVA)CIP(DPR)E(DLY)VC(DGL)

Chain A:  100%

There are no outlier residues in this chain.

4.2.4 Score per residue for model 4

- Molecule 1: H(DPR)(DVA)CIP(DPR)E(DLY)VC(DGL)

Chain A:  92% 8%



4.2.5 Score per residue for model 5

- Molecule 1: H(DPR)(DVA)CIP(DPR)E(DLY)VC(DGL)

Chain A:  100%

There are no outlier residues in this chain.

4.2.6 Score per residue for model 6

- Molecule 1: H(DPR)(DVA)CIP(DPR)E(DLY)VC(DGL)

Chain A:  100%

There are no outlier residues in this chain.

4.2.7 Score per residue for model 7

- Molecule 1: H(DPR)(DVA)CIP(DPR)E(DLY)VC(DGL)

Chain A:  92% 8%



4.2.8 Score per residue for model 8


- Molecule 1: H(DPR)(DVA)CIP(DPR)E(DLY)VC(DGL)

Chain A:  100%

There are no outlier residues in this chain.

4.2.9 Score per residue for model 9

- Molecule 1: H(DPR)(DVA)CIP(DPR)E(DLY)VC(DGL)

Chain A:  83% 17%



4.2.10 Score per residue for model 10

- Molecule 1: H(DPR)(DVA)CIP(DPR)E(DLY)VC(DGL)

Chain A:  100%

There are no outlier residues in this chain.

4.2.11 Score per residue for model 11

- Molecule 1: H(DPR)(DVA)CIP(DPR)E(DLY)VC(DGL)

Chain A:  92% 8%



4.2.12 Score per residue for model 12

- Molecule 1: H(DPR)(DVA)CIP(DPR)E(DLY)VC(DGL)

Chain A:  92% 8%



4.2.13 Score per residue for model 13


- Molecule 1: H(DPR)(DVA)CIP(DPR)E(DLY)VC(DGL)

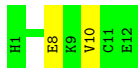
Chain A:  100%

There are no outlier residues in this chain.

4.2.14 Score per residue for model 14


- Molecule 1: H(DPR)(DVA)CIP(DPR)E(DLY)VC(DGL)

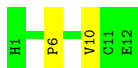
Chain A:  83% 17%



4.2.15 Score per residue for model 15

- Molecule 1: H(DPR)(DVA)CIP(DPR)E(DLY)VC(DGL)

Chain A:  83% 17%



4.2.16 Score per residue for model 16

- Molecule 1: H(DPR)(DVA)CIP(DPR)E(DLY)VC(DGL)

Chain A:  100%

There are no outlier residues in this chain.

4.2.17 Score per residue for model 17


- Molecule 1: H(DPR)(DVA)CIP(DPR)E(DLY)VC(DGL)

Chain A:  100%

There are no outlier residues in this chain.

4.2.18 Score per residue for model 18

- Molecule 1: H(DPR)(DVA)CIP(DPR)E(DLY)VC(DGL)

Chain A:  83% 17%



4.2.19 Score per residue for model 19

- Molecule 1: H(DPR)(DVA)CIP(DPR)E(DLY)VC(DGL)

Chain A:  92% 8%



4.2.20 Score per residue for model 20

- Molecule 1: H(DPR)(DVA)CIP(DPR)E(DLY)VC(DGL)

Chain A:  92% 8%



5 Refinement protocol and experimental data overview

The models were refined using the following method: *molecular dynamics*.

Of the 200 calculated structures, 20 were deposited, based on the following criterion: *structures with the lowest energy*.

The following table shows the software used for structure solution, optimisation and refinement.

Software name	Classification	Version
GROMACS	refinement	2016.1
X-PLOR NIH	structure calculation	

The following table shows chemical shift validation statistics as aggregates over all chemical shift files. Detailed validation can be found in section 7 of this report.

Chemical shift file(s)	working_cs.cif
Number of chemical shift lists	1
Total number of shifts	84
Number of shifts mapped to atoms	84
Number of unparsed shifts	0
Number of shifts with mapping errors	0
Number of shifts with mapping warnings	0
Assignment completeness (well-defined parts)	57%

6 Model quality i

6.1 Standard geometry i

Bond lengths and bond angles in the following residue types are not validated in this section: DGL, DLY, DPR, DVA

The Z score for a bond length (or angle) is the number of standard deviations the observed value is removed from the expected value. A bond length (or angle) with $|Z| > 5$ is considered an outlier worth inspection. RMSZ is the (average) root-mean-square of all Z scores of the bond lengths (or angles).

Mol	Chain	Bond lengths		Bond angles	
		RMSZ	#Z>5	RMSZ	#Z>5
1	A	0.50±0.02	0±0/51 (0.0± 0.0%)	1.64±0.19	1±1/64 (0.9± 1.1%)
All	All	0.50	0/1020 (0.0%)	1.65	12/1280 (0.9%)

Chiral center outliers are detected by calculating the chiral volume of a chiral center and verifying if the center is modelled as a planar moiety or with the opposite hand. A planarity outlier is detected by checking planarity of atoms in a peptide group, atoms in a mainchain group or atoms of a sidechain that are expected to be planar.

Mol	Chain	Chirality	Planarity
1	A	0.0±0.0	0.1±0.2
All	All	0	1

There are no bond-length outliers.

All unique angle outliers are listed below. They are sorted according to the Z-score of the worst occurrence in the ensemble.

Mol	Chain	Res	Type	Atoms	Z	Observed(°)	Ideal(°)	Models	
								Worst	Total
1	A	8	GLU	CB-CA-C	6.18	122.76	110.40	18	1
1	A	6	PRO	N-CA-CB	6.00	110.50	103.30	9	3
1	A	4	CYS	CA-CB-SG	5.91	124.65	114.00	7	1
1	A	10	VAL	CA-CB-CG2	5.89	119.74	110.90	14	3
1	A	6	PRO	N-CD-CG	5.84	111.96	103.20	1	2
1	A	5	ILE	CB-CA-C	5.70	123.01	111.60	20	1
1	A	10	VAL	CG1-CB-CG2	-5.30	102.42	110.90	14	1

There are no chirality outliers.

All unique planar outliers are listed below.

Mol	Chain	Res	Type	Group	Models (Total)
1	A	8	GLU	Mainchain	1

6.2 Too-close contacts [i](#)

In the following table, the Non-H and H(model) columns list the number of non-hydrogen atoms and hydrogen atoms in each chain respectively. The H(added) column lists the number of hydrogen atoms added and optimized by MolProbity. The Clashes column lists the number of clashes averaged over the ensemble.

Mol	Chain	Non-H	H(model)	H(added)	Clashes
All	All	1840	1820	1720	-

The all-atom clashscore is defined as the number of clashes found per 1000 atoms (including hydrogen atoms). The all-atom clashscore for this structure is -.

There are no clashes.

6.3 Torsion angles [i](#)

6.3.1 Protein backbone [i](#)

In the following table, the Percentiles column shows the percent Ramachandran outliers of the chain as a percentile score with respect to all PDB entries followed by that with respect to all NMR entries. The Analysed column shows the number of residues for which the backbone conformation was analysed and the total number of residues.

Mol	Chain	Analysed	Favoured	Allowed	Outliers	Percentiles	
1	A	6/12 (50%)	6±0 (96±7%)	0±0 (2±6%)	0±0 (2±5%)	13	56
All	All	120/240 (50%)	115 (96%)	3 (2%)	2 (2%)	13	56

All 1 unique Ramachandran outliers are listed below.

Mol	Chain	Res	Type	Models (Total)
1	A	8	GLU	2

6.3.2 Protein sidechains [i](#)

In the following table, the Percentiles column shows the percent sidechain outliers of the chain as a percentile score with respect to all PDB entries followed by that with respect to all NMR entries. The Analysed column shows the number of residues for which the sidechain conformation was analysed and the total number of residues.

Mol	Chain	Analysed	Rotameric	Outliers	Percentiles
1	A	7/7 (100%)	7±0 (99±4%)	0±0 (1±4%)	68 95
All	All	140/140 (100%)	138 (99%)	2 (1%)	68 95

All 2 unique residues with a non-rotameric sidechain are listed below. They are sorted by the frequency of occurrence in the ensemble.

Mol	Chain	Res	Type	Models (Total)
1	A	4	CYS	1
1	A	5	ILE	1

6.3.3 RNA [i](#)

There are no RNA molecules in this entry.

6.4 Non-standard residues in protein, DNA, RNA chains [i](#)

5 non-standard protein/DNA/RNA residues are modelled in this entry.

There are no bond-length outliers.

There are no bond-angle outliers.

There are no chirality outliers.

There are no torsion outliers.

There are no ring outliers.

6.5 Carbohydrates [i](#)

There are no monosaccharides in this entry.

6.6 Ligand geometry [i](#)

There are no ligands in this entry.

6.7 Other polymers [i](#)

There are no such molecules in this entry.

6.8 Polymer linkage issues

There are no chain breaks in this entry.

7 Chemical shift validation [i](#)

The completeness of assignment taking into account all chemical shift lists is 57% for the well-defined parts and 57% for the entire structure.

7.1 Chemical shift list 1

File name: working_cs.cif

Chemical shift list name: *12mer_bmrB.txt*

7.1.1 Bookkeeping [i](#)

The following table shows the results of parsing the chemical shift list and reports the number of nuclei with statistically unusual chemical shifts.

Total number of shifts	84
Number of shifts mapped to atoms	84
Number of unparsed shifts	0
Number of shifts with mapping errors	0
Number of shifts with mapping warnings	0
Number of shift outliers (ShiftChecker)	0

The following errors were found when reading this chemical shift list.

- Chemical shift has been reported more than once. All 2 occurrences are reported below.

List ID	Chain	Res	Type	Atom	Shift Data		
					Value	Uncertainty	Ambiguity
1	A	3	DVA	HG12	0.973	0.00	.
1	A	3	DVA	HG13	0.973	0.00	.

7.1.2 Chemical shift referencing [i](#)

No chemical shift referencing corrections were calculated (not enough data).

7.1.3 Completeness of resonance assignments [i](#)

The following table shows the completeness of the chemical shift assignments for the well-defined regions of the structure. The overall completeness is 57%, i.e. 51 atoms were assigned a chemical shift out of a possible 89. 0 out of 1 assigned methyl groups (LEU and VAL) were assigned stereospecifically.

	Total	¹ H	¹³ C	¹⁵ N
Backbone	17/33 (52%)	12/13 (92%)	0/14 (0%)	5/6 (83%)
Sidechain	32/48 (67%)	32/32 (100%)	0/16 (0%)	0/0 (—%)
Aromatic	2/8 (25%)	2/4 (50%)	0/2 (0%)	0/2 (0%)
Overall	51/89 (57%)	46/49 (94%)	0/32 (0%)	5/8 (62%)

The following table shows the completeness of the chemical shift assignments for the full structure. The overall completeness is 57%, i.e. 51 atoms were assigned a chemical shift out of a possible 89. 0 out of 1 assigned methyl groups (LEU and VAL) were assigned stereospecifically.

	Total	¹ H	¹³ C	¹⁵ N
Backbone	17/33 (52%)	12/13 (92%)	0/14 (0%)	5/6 (83%)
Sidechain	32/48 (67%)	32/32 (100%)	0/16 (0%)	0/0 (—%)
Aromatic	2/8 (25%)	2/4 (50%)	0/2 (0%)	0/2 (0%)
Overall	51/89 (57%)	46/49 (94%)	0/32 (0%)	5/8 (62%)

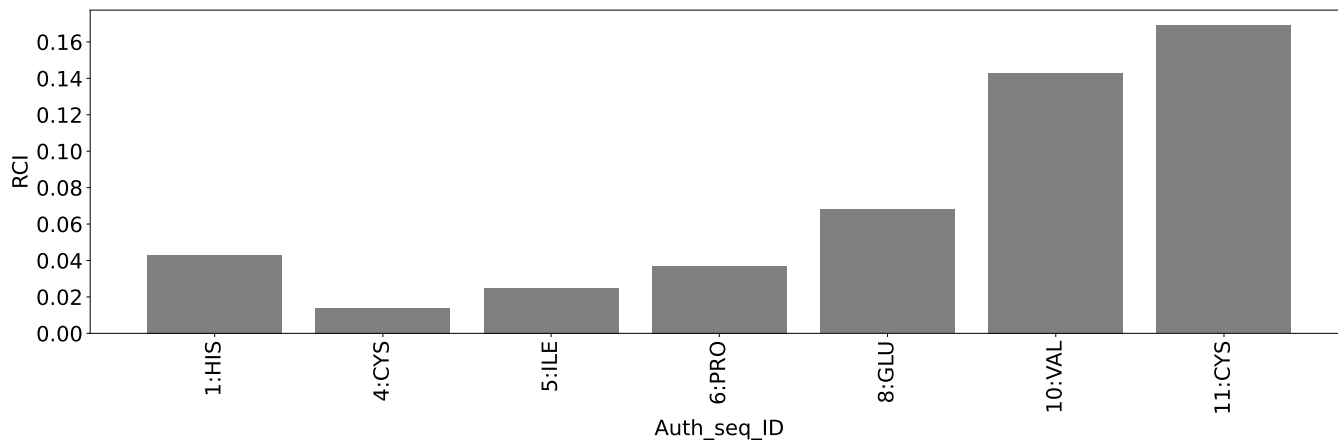
7.1.4 Statistically unusual chemical shifts [i](#)

There are no statistically unusual chemical shifts.

7.1.5 Random Coil Index (RCI) plots [i](#)

The image below reports *random coil index* values for the protein chains in the structure. The height of each bar gives a probability of a given residue to be disordered, as predicted from the available chemical shifts and the amino acid sequence. A value above 0.2 is an indication of significant predicted disorder. The colour of the bar shows whether the residue is in the well-defined core (black) or in the ill-defined residue ranges (cyan), as described in section 2 on ensemble composition. If well-defined core and ill-defined regions are not identified then it is shown as gray bars.

Random coil index (RCI) for chain A:



8 NMR restraints analysis

8.1 Conformationally restricting restraints

The following table provides the summary of experimentally observed NMR restraints in different categories. Restraints are classified into different categories based on the sequence separation of the atoms involved.

Description	Value
Total distance restraints	103
Intra-residue ($ i-j =0$)	48
Sequential ($ i-j =1$)	30
Medium range ($ i-j >1$ and $ i-j <5$)	9
Long range ($ i-j \geq 5$)	16
Inter-chain	0
Hydrogen bond restraints	0
Disulfide bond restraints	0
Total dihedral-angle restraints	0
Number of unmapped restraints	7
Number of restraints per residue	8.6
Number of long range restraints per residue ¹	1.3

¹Long range hydrogen bonds and disulfide bonds are counted as long range restraints while calculating the number of long range restraints per residue

8.2 Residual restraint violations

This section provides the overview of the restraint violations analysis. The violations are binned as small, medium and large violations based on its absolute value. Average number of violations per model is calculated by dividing the total number of violations in each bin by the size of the ensemble.

8.2.1 Average number of distance violations per model

Distance violations less than 0.1 Å are not included in the calculation.

Bins (Å)	Average number of violations per model	Max (Å)
0.1-0.2 (Small)	4.8	0.2
0.2-0.5 (Medium)	9.9	0.5
>0.5 (Large)	5.3	1.92

8.2.2 Average number of dihedral-angle violations per model

Dihedral-angle violations less than 1° are not included in the calculation. There are no dihedral-angle violations

9 Distance violation analysis i

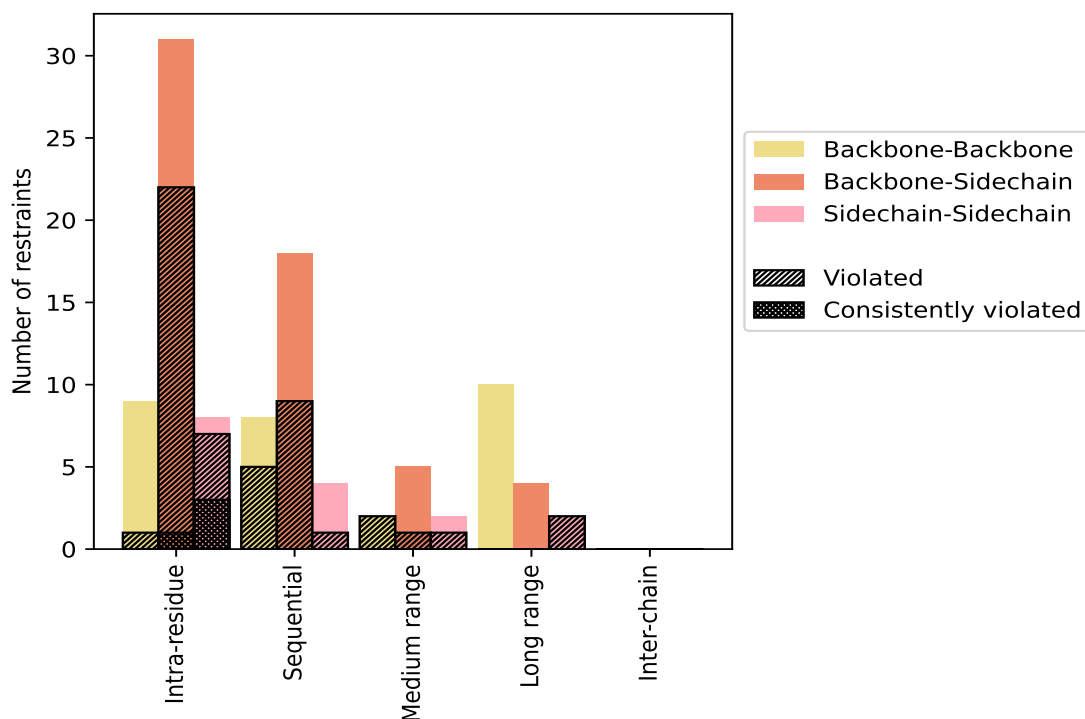
9.1 Summary of distance violations i

The following table shows the summary of distance violations in different restraint categories based on the sequence separation of the atoms involved. Each category is further sub-divided into three sub-categories based on the atoms involved. Violations less than 0.1 Å are not included in the statistics.

Restrains type	Count	% ¹	Violated ³			Consistently Violated ⁴		
			Count	% ²	% ¹	Count	% ²	% ¹
Intra-residue ($i-j =0$)	48	46.6	30	62.5	29.1	4	8.3	3.9
Backbone-Backbone	9	8.7	1	11.1	1.0	0	0.0	0.0
Backbone-Sidechain	31	30.1	22	71.0	21.4	1	3.2	1.0
Sidechain-Sidechain	8	7.8	7	87.5	6.8	3	37.5	2.9
Sequential ($i-j =1$)	30	29.1	15	50.0	14.6	0	0.0	0.0
Backbone-Backbone	8	7.8	5	62.5	4.9	0	0.0	0.0
Backbone-Sidechain	18	17.5	9	50.0	8.7	0	0.0	0.0
Sidechain-Sidechain	4	3.9	1	25.0	1.0	0	0.0	0.0
Medium range ($i-j >1$ & $i-j <5$)	9	8.7	4	44.4	3.9	0	0.0	0.0
Backbone-Backbone	2	1.9	2	100.0	1.9	0	0.0	0.0
Backbone-Sidechain	5	4.9	1	20.0	1.0	0	0.0	0.0
Sidechain-Sidechain	2	1.9	1	50.0	1.0	0	0.0	0.0
Long range ($i-j \geq 5$)	16	15.5	2	12.5	1.9	0	0.0	0.0
Backbone-Backbone	10	9.7	0	0.0	0.0	0	0.0	0.0
Backbone-Sidechain	4	3.9	0	0.0	0.0	0	0.0	0.0
Sidechain-Sidechain	2	1.9	2	100.0	1.9	0	0.0	0.0
Inter-chain	0	0.0	0	0.0	0.0	0	0.0	0.0
Backbone-Backbone	0	0.0	0	0.0	0.0	0	0.0	0.0
Backbone-Sidechain	0	0.0	0	0.0	0.0	0	0.0	0.0
Sidechain-Sidechain	0	0.0	0	0.0	0.0	0	0.0	0.0
Hydrogen bond	0	0.0	0	0.0	0.0	0	0.0	0.0
Disulfide bond	0	0.0	0	0.0	0.0	0	0.0	0.0
Total	103	100.0	51	49.5	49.5	4	3.9	3.9
Backbone-Backbone	29	28.2	8	27.6	7.8	0	0.0	0.0
Backbone-Sidechain	58	56.3	32	55.2	31.1	1	1.7	1.0
Sidechain-Sidechain	16	15.5	11	68.8	10.7	3	18.8	2.9

¹ percentage calculated with respect to the total number of distance restraints, ² percentage calculated with respect to the number of restraints in a particular restraint category, ³ violated in at least one model, ⁴ violated in all the models

9.1.1 Bar chart : Distribution of distance restraints and violations [i](#)



Violated and consistently violated restraints are shown using different hatch patterns in their respective categories. The hydrogen bonds and disulfid bonds are counted in their appropriate category on the x-axis

9.2 Distance violation statistics for each model [i](#)

The following table provides the distance violation statistics for each model in the ensemble. Violations less than 0.1 Å are not included in the statistics.

Model ID	Number of violations						Mean (Å)	Max (Å)	SD ⁶ (Å)	Median (Å)
	IR ¹	SQ ²	MR ³	LR ⁴	IC ⁵	Total				
1	13	10	1	0	0	24	0.32	0.83	0.19	0.24
2	10	8	0	0	0	18	0.4	0.97	0.24	0.34
3	10	10	2	0	0	22	0.39	0.93	0.19	0.34
4	13	8	1	0	0	22	0.41	0.87	0.22	0.43
5	11	5	2	0	0	18	0.32	0.77	0.18	0.24
6	10	7	1	0	0	18	0.38	0.76	0.18	0.36
7	10	7	1	1	0	19	0.37	0.61	0.14	0.36
8	8	6	2	2	0	18	0.48	1.18	0.28	0.5
9	9	8	3	1	0	21	0.42	0.88	0.22	0.42
10	14	7	1	0	0	22	0.34	0.8	0.19	0.3
11	11	9	3	1	0	24	0.36	0.79	0.18	0.32

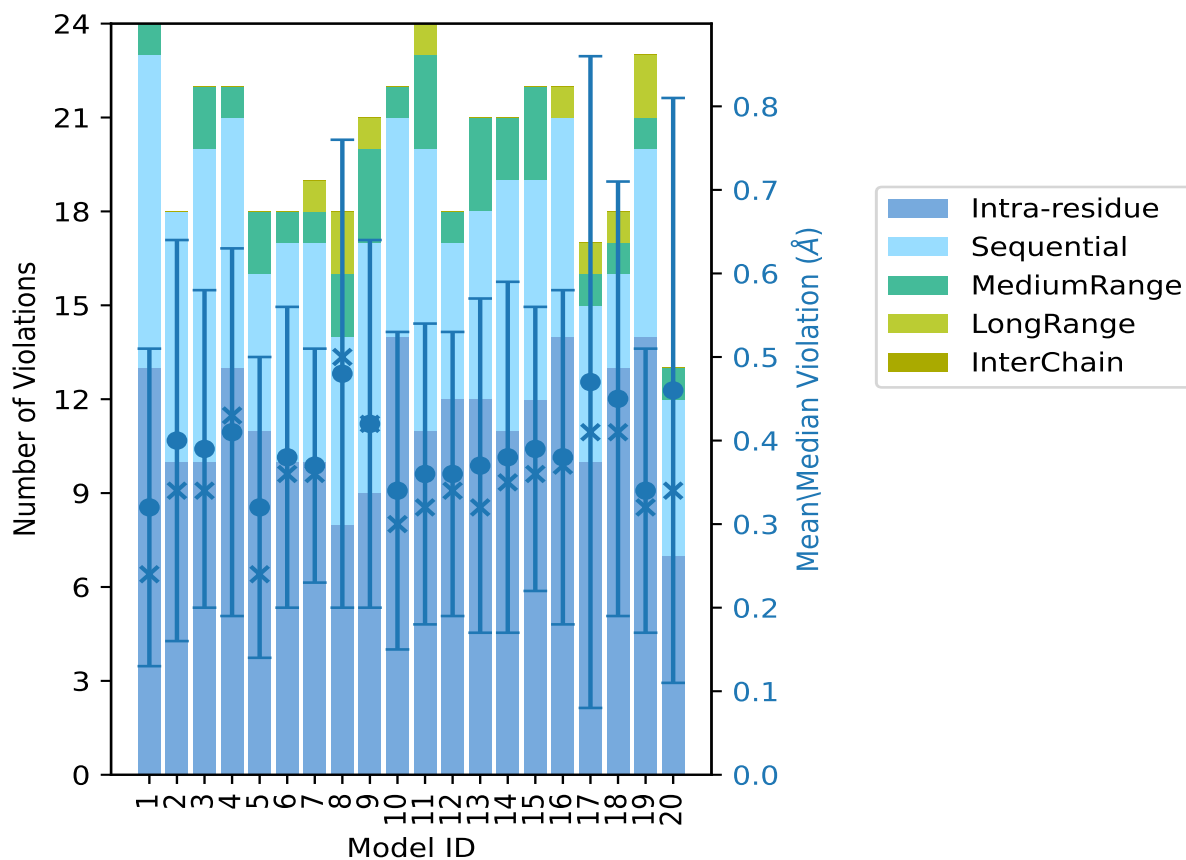
Continued on next page...

Continued from previous page...

Model ID	Number of violations					Total	Mean (Å)	Max (Å)	SD ⁶ (Å)	Median (Å)
	IR ¹	SQ ²	MR ³	LR ⁴	IC ⁵					
12	12	5	1	0	0	18	0.36	0.69	0.17	0.34
13	12	6	3	0	0	21	0.37	0.79	0.2	0.32
14	11	8	2	0	0	21	0.38	0.77	0.21	0.35
15	12	7	3	0	0	22	0.39	0.83	0.17	0.36
16	14	7	0	1	0	22	0.38	0.81	0.2	0.37
17	10	5	1	1	0	17	0.47	1.92	0.39	0.41
18	13	3	1	1	0	18	0.45	1.22	0.26	0.41
19	14	6	1	2	0	23	0.34	0.78	0.17	0.32
20	7	5	1	0	0	13	0.46	1.5	0.35	0.34

¹Intra-residue restraints, ²Sequential restraints, ³Medium range restraints, ⁴Long range restraints, ⁵Inter-chain restraints, ⁶Standard deviation

9.2.1 Bar graph : Distance Violation statistics for each model [i](#)



The mean(dot),median(x) and the standard deviation are shown in blue with respect to the y axis on the right

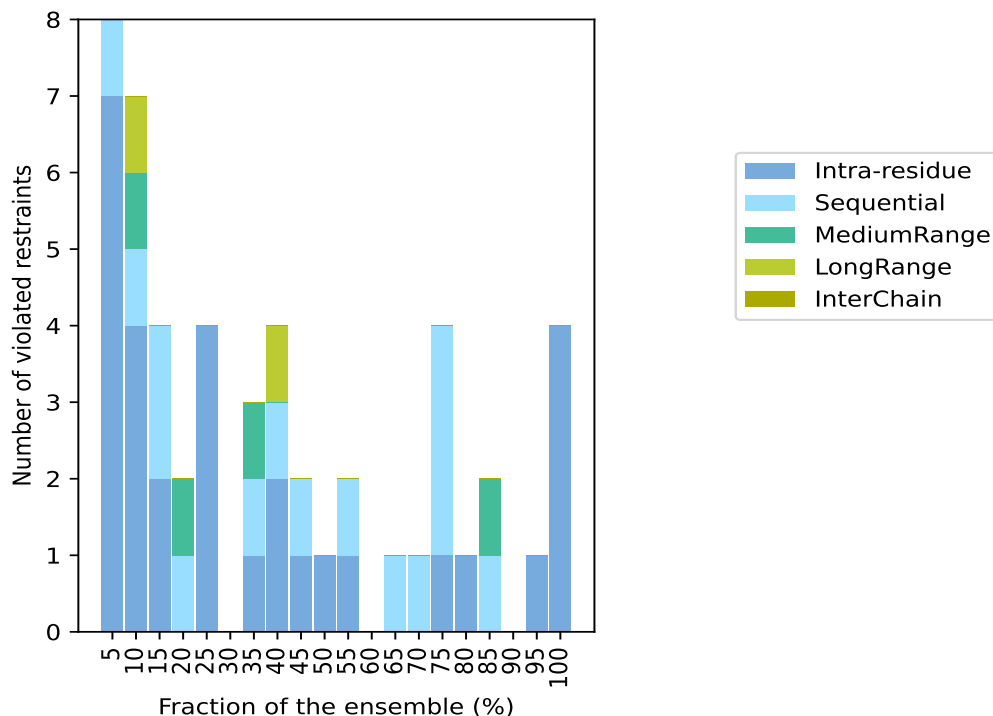
9.3 Distance violation statistics for the ensemble

Violation analysis may find that some restraints are violated in few models and some are violated in most of models. The following table provides this information as number of violated restraints for a given fraction of the ensemble. In total, 52(IR:18, SQ:15, MR:5, LR:14, IC:0) restraints are not violated in the ensemble.

Number of violated restraints						Fraction of the ensemble	
IR ¹	SQ ²	MR ³	LR ⁴	IC ⁵	Total	Count ⁶	%
7	1	0	0	0	8	1	5.0
4	1	1	1	0	7	2	10.0
2	2	0	0	0	4	3	15.0
0	1	1	0	0	2	4	20.0
4	0	0	0	0	4	5	25.0
0	0	0	0	0	0	6	30.0
1	1	1	0	0	3	7	35.0
2	1	0	1	0	4	8	40.0
1	1	0	0	0	2	9	45.0
1	0	0	0	0	1	10	50.0
1	1	0	0	0	2	11	55.0
0	0	0	0	0	0	12	60.0
0	1	0	0	0	1	13	65.0
0	1	0	0	0	1	14	70.0
1	3	0	0	0	4	15	75.0
1	0	0	0	0	1	16	80.0
0	1	1	0	0	2	17	85.0
0	0	0	0	0	0	18	90.0
1	0	0	0	0	1	19	95.0
4	0	0	0	0	4	20	100.0

¹Intra-residue restraints, ²Sequential restraints, ³Medium range restraints, ⁴Long range restraints, ⁵Inter-chain restraints, ⁶ Number of models with violations

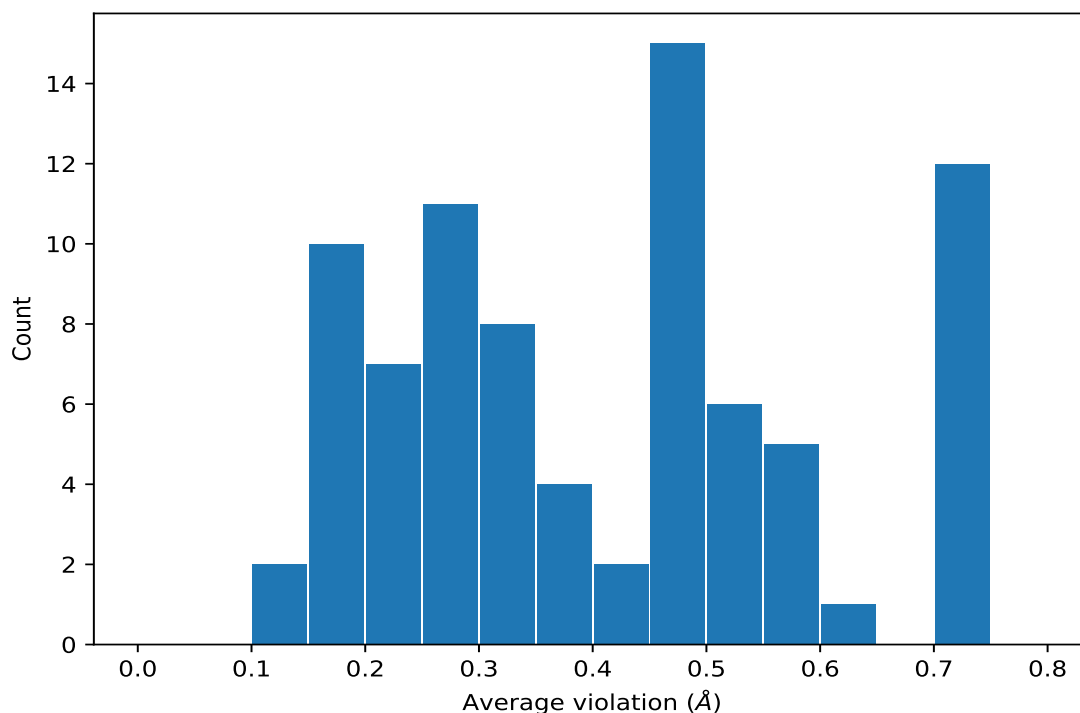
9.3.1 Bar graph : Distance violation statistics for the ensemble [i](#)



9.4 Most violated distance restraints in the ensemble [i](#)

9.4.1 Histogram : Distribution of mean distance violations [i](#)

The following histogram shows the distribution of the average value of the violation. The average is calculated for each restraint that is violated in more than one model over all the violated models in the ensemble



9.4.2 Table: Most violated distance restraints [i](#)

The following table provides the mean and the standard deviation of the violation for each restraint sorted by number of violated models and the mean value. The Key (restraint list ID, restraint ID) is the unique identifier for a given restraint. Rows with same key represent combinatorial or ambiguous restraints and are counted as a single restraint.

Key	Atom-1	Atom-2	Models ¹	Mean (Å)	SD ¹ (Å)	Median (Å)
(1,33)	1:A:3:DVA:HG21	1:A:3:DVA:HA	20	0.57	0.1	0.58
(1,33)	1:A:3:DVA:HG22	1:A:3:DVA:HA	20	0.57	0.1	0.58
(1,33)	1:A:3:DVA:HG23	1:A:3:DVA:HA	20	0.57	0.1	0.58
(1,22)	1:A:2:DPR:HD3	1:A:2:DPR:HG3	20	0.54	0.09	0.54
(1,66)	1:A:7:DPR:HD3	1:A:7:DPR:HG3	20	0.53	0.1	0.53
(1,8)	1:A:6:PRO:HD2	1:A:6:PRO:HD3	20	0.51	0.05	0.51
(1,16)	1:A:1:HIS:HB2	1:A:1:HIS:HD2	19	0.31	0.09	0.29
(1,16)	1:A:1:HIS:HB3	1:A:1:HIS:HD2	19	0.31	0.09	0.29
(1,85)	1:A:10:VAL:HG11	1:A:12:DGL:HG3	17	0.72	0.48	0.59
(1,85)	1:A:10:VAL:HG12	1:A:12:DGL:HG3	17	0.72	0.48	0.59
(1,85)	1:A:10:VAL:HG13	1:A:12:DGL:HG3	17	0.72	0.48	0.59
(1,85)	1:A:10:VAL:HG21	1:A:12:DGL:HG3	17	0.72	0.48	0.59
(1,85)	1:A:10:VAL:HG22	1:A:12:DGL:HG3	17	0.72	0.48	0.59
(1,85)	1:A:10:VAL:HG23	1:A:12:DGL:HG3	17	0.72	0.48	0.59
(1,58)	1:A:6:PRO:HD3	1:A:5:ILE:HA	17	0.55	0.25	0.52
(1,70)	1:A:8:GLU:HB2	1:A:8:GLU:H	16	0.4	0.15	0.35

Continued on next page...

Continued from previous page...

Key	Atom-1	Atom-2	Models ¹	Mean (Å)	SD ¹ (Å)	Median (Å)
(1,61)	1:A:7:DPR:HA	1:A:8:GLU:H	15	0.61	0.14	0.61
(1,59)	1:A:6:PRO:HD2	1:A:5:ILE:HA	15	0.55	0.26	0.62
(1,78)	1:A:10:VAL:HB	1:A:11:CYS:H	15	0.34	0.1	0.33
(1,60)	1:A:7:DPR:HA	1:A:7:DPR:HB2	15	0.21	0.06	0.22
(1,13)	1:A:11:CYS:HA	1:A:12:DGL:H	14	0.17	0.05	0.15
(1,3)	1:A:4:CYS:HA	1:A:5:ILE:H	13	0.22	0.07	0.21
(1,27)	1:A:3:DVA:HB	1:A:4:CYS:H	11	0.33	0.12	0.28
(1,97)	1:A:12:DGL:HB2	1:A:12:DGL:H	11	0.26	0.09	0.24
(1,68)	1:A:8:GLU:HB3	1:A:8:GLU:H	10	0.39	0.12	0.36
(1,12)	1:A:10:VAL:HG11	1:A:10:VAL:HA	9	0.19	0.06	0.19
(1,12)	1:A:10:VAL:HG12	1:A:10:VAL:HA	9	0.19	0.06	0.19
(1,12)	1:A:10:VAL:HG13	1:A:10:VAL:HA	9	0.19	0.06	0.19
(1,12)	1:A:10:VAL:HG21	1:A:10:VAL:HA	9	0.19	0.06	0.19
(1,12)	1:A:10:VAL:HG22	1:A:10:VAL:HA	9	0.19	0.06	0.19
(1,12)	1:A:10:VAL:HG23	1:A:10:VAL:HA	9	0.19	0.06	0.19
(1,2)	1:A:3:DVA:HA	1:A:4:CYS:H	9	0.18	0.04	0.17
(1,31)	1:A:3:DVA:HG11	1:A:11:CYS:HB3	8	0.32	0.13	0.32
(1,31)	1:A:3:DVA:HG12	1:A:11:CYS:HB3	8	0.32	0.13	0.32
(1,31)	1:A:3:DVA:HG13	1:A:11:CYS:HB3	8	0.32	0.13	0.32
(1,44)	1:A:5:ILE:HG12	1:A:5:ILE:H	8	0.28	0.16	0.24
(1,44)	1:A:5:ILE:HG13	1:A:5:ILE:H	8	0.28	0.16	0.24
(1,45)	1:A:5:ILE:HG12	1:A:5:ILE:H	8	0.28	0.16	0.24
(1,45)	1:A:5:ILE:HG13	1:A:5:ILE:H	8	0.28	0.16	0.24
(1,6)	1:A:6:PRO:HA	1:A:7:DPR:HD2	8	0.15	0.04	0.14
(1,57)	1:A:6:PRO:HA	1:A:9:DLY:H	7	0.41	0.16	0.43
(1,93)	1:A:11:CYS:HB2	1:A:11:CYS:H	7	0.28	0.12	0.25
(1,11)	1:A:10:VAL:HA	1:A:11:CYS:H	7	0.2	0.07	0.18
(1,46)	1:A:5:ILE:HG21	1:A:5:ILE:H	5	0.47	0.07	0.49
(1,46)	1:A:5:ILE:HG22	1:A:5:ILE:H	5	0.47	0.07	0.49
(1,46)	1:A:5:ILE:HG23	1:A:5:ILE:H	5	0.47	0.07	0.49
(1,91)	1:A:11:CYS:HB3	1:A:11:CYS:H	5	0.35	0.09	0.32
(1,74)	1:A:9:DLY:HE3	1:A:9:DLY:HA	5	0.26	0.2	0.18
(1,52)	1:A:6:PRO:HA	1:A:6:PRO:HB2	5	0.18	0.03	0.17
(1,63)	1:A:7:DPR:HD2	1:A:9:DLY:H	4	0.26	0.11	0.26
(1,20)	1:A:2:DPR:HD2	1:A:3:DVA:H	4	0.25	0.08	0.22
(1,48)	1:A:5:ILE:HG21	1:A:6:PRO:HD2	3	0.51	0.09	0.53
(1,48)	1:A:5:ILE:HG22	1:A:6:PRO:HD2	3	0.51	0.09	0.53
(1,48)	1:A:5:ILE:HG23	1:A:6:PRO:HD2	3	0.51	0.09	0.53
(1,71)	1:A:8:GLU:HG2	1:A:8:GLU:H	3	0.28	0.07	0.28
(1,71)	1:A:8:GLU:HG3	1:A:8:GLU:H	3	0.28	0.07	0.28
(1,65)	1:A:7:DPR:HD3	1:A:7:DPR:HG2	3	0.22	0.09	0.17
(1,92)	1:A:11:CYS:HB3	1:A:12:DGL:H	3	0.15	0.03	0.16

Continued on next page...

Continued from previous page...

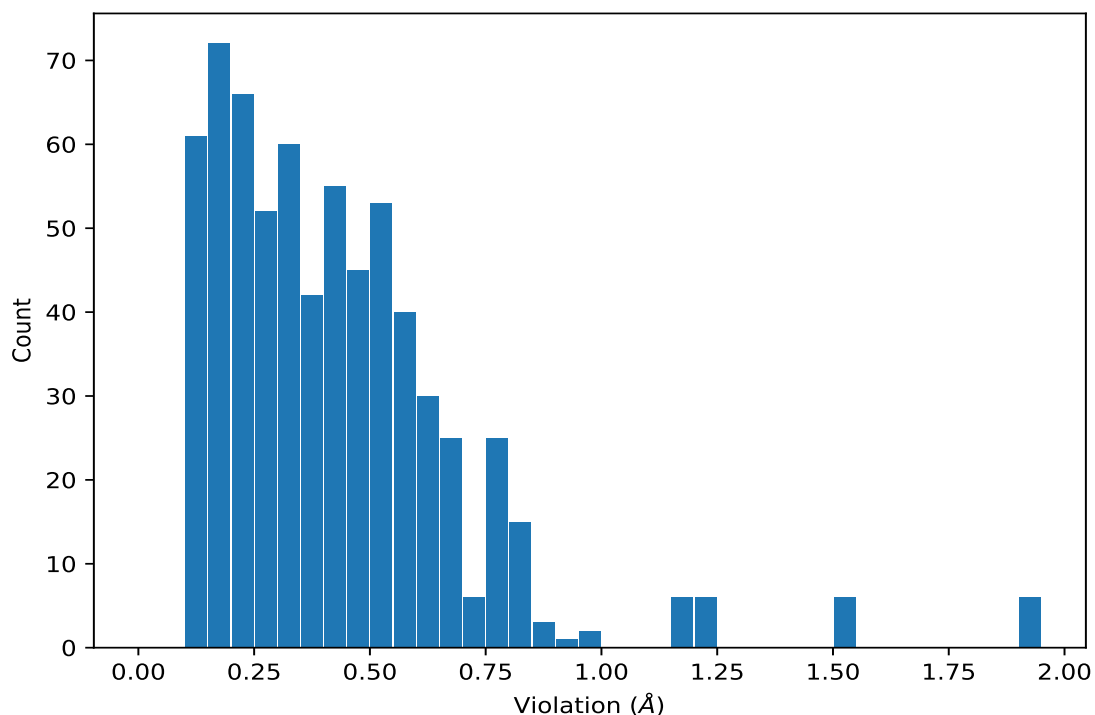
Key	Atom-1	Atom-2	Models ¹	Mean (Å)	SD ¹ (Å)	Median (Å)
(1,84)	1:A:10:VAL:HG11	1:A:11:CYS:H	2	0.73	0.09	0.73
(1,84)	1:A:10:VAL:HG12	1:A:11:CYS:H	2	0.73	0.09	0.73
(1,84)	1:A:10:VAL:HG13	1:A:11:CYS:H	2	0.73	0.09	0.73
(1,84)	1:A:10:VAL:HG21	1:A:11:CYS:H	2	0.73	0.09	0.73
(1,84)	1:A:10:VAL:HG22	1:A:11:CYS:H	2	0.73	0.09	0.73
(1,84)	1:A:10:VAL:HG23	1:A:11:CYS:H	2	0.73	0.09	0.73
(1,79)	1:A:10:VAL:HG11	1:A:1:HIS:HB2	2	0.47	0.04	0.47
(1,79)	1:A:10:VAL:HG11	1:A:1:HIS:HB3	2	0.47	0.04	0.47
(1,79)	1:A:10:VAL:HG12	1:A:1:HIS:HB2	2	0.47	0.04	0.47
(1,79)	1:A:10:VAL:HG12	1:A:1:HIS:HB3	2	0.47	0.04	0.47
(1,79)	1:A:10:VAL:HG13	1:A:1:HIS:HB2	2	0.47	0.04	0.47
(1,79)	1:A:10:VAL:HG13	1:A:1:HIS:HB3	2	0.47	0.04	0.47
(1,79)	1:A:10:VAL:HG21	1:A:1:HIS:HB2	2	0.47	0.04	0.47
(1,79)	1:A:10:VAL:HG21	1:A:1:HIS:HB3	2	0.47	0.04	0.47
(1,79)	1:A:10:VAL:HG22	1:A:1:HIS:HB2	2	0.47	0.04	0.47
(1,79)	1:A:10:VAL:HG22	1:A:1:HIS:HB3	2	0.47	0.04	0.47
(1,79)	1:A:10:VAL:HG23	1:A:1:HIS:HB2	2	0.47	0.04	0.47
(1,79)	1:A:10:VAL:HG23	1:A:1:HIS:HB3	2	0.47	0.04	0.47
(1,43)	1:A:5:ILE:HD11	1:A:5:ILE:H	2	0.36	0.02	0.36
(1,43)	1:A:5:ILE:HD12	1:A:5:ILE:H	2	0.36	0.02	0.36
(1,43)	1:A:5:ILE:HD13	1:A:5:ILE:H	2	0.36	0.02	0.36
(1,21)	1:A:2:DPR:HD3	1:A:2:DPR:HB3	2	0.23	0.07	0.23
(1,56)	1:A:6:PRO:HA	1:A:8:GLU:H	2	0.2	0.04	0.2
(1,5)	1:A:6:PRO:HA	1:A:6:PRO:HB3	2	0.2	0.02	0.2
(1,76)	1:A:10:VAL:HA	1:A:10:VAL:H	2	0.18	0.0	0.18

¹Number of violated models, ²Standard deviation

9.5 All violated distance restraints [i](#)

9.5.1 Histogram : Distribution of distance violations [i](#)

The following histogram shows the distribution of the absolute value of the violation for all violated restraints in the ensemble.



9.5.2 Table : All distance violations [i](#)

The following table lists the absolute value of the violation for each restraint in the ensemble sorted by its value. The Key (restraint list ID, restraint ID) is the unique identifier for a given restraint. Rows with same key represent combinatorial or ambiguous restraints and are counted as a single restraint.

Key	Atom-1	Atom-2	Model ID	Violation (Å)
(1,85)	1:A:10:VAL:HG11	1:A:12:DGL:HG3	17	1.92
(1,85)	1:A:10:VAL:HG12	1:A:12:DGL:HG3	17	1.92
(1,85)	1:A:10:VAL:HG13	1:A:12:DGL:HG3	17	1.92
(1,85)	1:A:10:VAL:HG21	1:A:12:DGL:HG3	17	1.92
(1,85)	1:A:10:VAL:HG22	1:A:12:DGL:HG3	17	1.92
(1,85)	1:A:10:VAL:HG23	1:A:12:DGL:HG3	17	1.92
(1,85)	1:A:10:VAL:HG11	1:A:12:DGL:HG3	20	1.5
(1,85)	1:A:10:VAL:HG12	1:A:12:DGL:HG3	20	1.5
(1,85)	1:A:10:VAL:HG13	1:A:12:DGL:HG3	20	1.5
(1,85)	1:A:10:VAL:HG21	1:A:12:DGL:HG3	20	1.5
(1,85)	1:A:10:VAL:HG22	1:A:12:DGL:HG3	20	1.5
(1,85)	1:A:10:VAL:HG23	1:A:12:DGL:HG3	20	1.5
(1,85)	1:A:10:VAL:HG11	1:A:12:DGL:HG3	18	1.22
(1,85)	1:A:10:VAL:HG12	1:A:12:DGL:HG3	18	1.22
(1,85)	1:A:10:VAL:HG13	1:A:12:DGL:HG3	18	1.22
(1,85)	1:A:10:VAL:HG21	1:A:12:DGL:HG3	18	1.22

Continued on next page...

Continued from previous page...

Key	Atom-1	Atom-2	Model ID	Violation (Å)
(1,85)	1:A:10:VAL:HG22	1:A:12:DGL:HG3	18	1.22
(1,85)	1:A:10:VAL:HG23	1:A:12:DGL:HG3	18	1.22
(1,85)	1:A:10:VAL:HG11	1:A:12:DGL:HG3	8	1.18
(1,85)	1:A:10:VAL:HG12	1:A:12:DGL:HG3	8	1.18
(1,85)	1:A:10:VAL:HG13	1:A:12:DGL:HG3	8	1.18
(1,85)	1:A:10:VAL:HG21	1:A:12:DGL:HG3	8	1.18
(1,85)	1:A:10:VAL:HG22	1:A:12:DGL:HG3	8	1.18
(1,85)	1:A:10:VAL:HG23	1:A:12:DGL:HG3	8	1.18
(1,59)	1:A:6:PRO:HD2	1:A:5:ILE:HA	8	0.99
(1,58)	1:A:6:PRO:HD3	1:A:5:ILE:HA	2	0.97
(1,58)	1:A:6:PRO:HD3	1:A:5:ILE:HA	3	0.93
(1,58)	1:A:6:PRO:HD3	1:A:5:ILE:HA	9	0.88
(1,59)	1:A:6:PRO:HD2	1:A:5:ILE:HA	4	0.87
(1,61)	1:A:7:DPR:HA	1:A:8:GLU:H	4	0.85
(1,70)	1:A:8:GLU:HB2	1:A:8:GLU:H	15	0.83
(1,59)	1:A:6:PRO:HD2	1:A:5:ILE:HA	1	0.83
(1,84)	1:A:10:VAL:HG11	1:A:11:CYS:H	16	0.81
(1,84)	1:A:10:VAL:HG12	1:A:11:CYS:H	16	0.81
(1,84)	1:A:10:VAL:HG13	1:A:11:CYS:H	16	0.81
(1,84)	1:A:10:VAL:HG21	1:A:11:CYS:H	16	0.81
(1,84)	1:A:10:VAL:HG22	1:A:11:CYS:H	16	0.81
(1,84)	1:A:10:VAL:HG23	1:A:11:CYS:H	16	0.81
(1,85)	1:A:10:VAL:HG11	1:A:12:DGL:HG3	10	0.8
(1,85)	1:A:10:VAL:HG12	1:A:12:DGL:HG3	10	0.8
(1,85)	1:A:10:VAL:HG13	1:A:12:DGL:HG3	10	0.8
(1,85)	1:A:10:VAL:HG21	1:A:12:DGL:HG3	10	0.8
(1,85)	1:A:10:VAL:HG22	1:A:12:DGL:HG3	10	0.8
(1,85)	1:A:10:VAL:HG23	1:A:12:DGL:HG3	10	0.8
(1,58)	1:A:6:PRO:HD3	1:A:5:ILE:HA	18	0.8
(1,61)	1:A:7:DPR:HA	1:A:8:GLU:H	11	0.79
(1,59)	1:A:6:PRO:HD2	1:A:5:ILE:HA	13	0.79
(1,58)	1:A:6:PRO:HD3	1:A:5:ILE:HA	19	0.78
(1,85)	1:A:10:VAL:HG11	1:A:12:DGL:HG3	5	0.77
(1,85)	1:A:10:VAL:HG12	1:A:12:DGL:HG3	5	0.77
(1,85)	1:A:10:VAL:HG13	1:A:12:DGL:HG3	5	0.77
(1,85)	1:A:10:VAL:HG21	1:A:12:DGL:HG3	5	0.77
(1,85)	1:A:10:VAL:HG22	1:A:12:DGL:HG3	5	0.77
(1,85)	1:A:10:VAL:HG23	1:A:12:DGL:HG3	5	0.77
(1,61)	1:A:7:DPR:HA	1:A:8:GLU:H	9	0.77
(1,61)	1:A:7:DPR:HA	1:A:8:GLU:H	14	0.77
(1,58)	1:A:6:PRO:HD3	1:A:5:ILE:HA	14	0.77
(1,22)	1:A:2:DPR:HD3	1:A:2:DPR:HG3	20	0.77

Continued on next page...

Continued from previous page...

Key	Atom-1	Atom-2	Model ID	Violation (Å)
(1,85)	1:A:10:VAL:HG11	1:A:12:DGL:HG3	6	0.76
(1,85)	1:A:10:VAL:HG12	1:A:12:DGL:HG3	6	0.76
(1,85)	1:A:10:VAL:HG13	1:A:12:DGL:HG3	6	0.76
(1,85)	1:A:10:VAL:HG21	1:A:12:DGL:HG3	6	0.76
(1,85)	1:A:10:VAL:HG22	1:A:12:DGL:HG3	6	0.76
(1,85)	1:A:10:VAL:HG23	1:A:12:DGL:HG3	6	0.76
(1,85)	1:A:10:VAL:HG11	1:A:12:DGL:HG3	14	0.76
(1,85)	1:A:10:VAL:HG12	1:A:12:DGL:HG3	14	0.76
(1,85)	1:A:10:VAL:HG13	1:A:12:DGL:HG3	14	0.76
(1,85)	1:A:10:VAL:HG21	1:A:12:DGL:HG3	14	0.76
(1,85)	1:A:10:VAL:HG22	1:A:12:DGL:HG3	14	0.76
(1,85)	1:A:10:VAL:HG23	1:A:12:DGL:HG3	14	0.76
(1,61)	1:A:7:DPR:HA	1:A:8:GLU:H	3	0.73
(1,33)	1:A:3:DVA:HG21	1:A:3:DVA:HA	8	0.73
(1,33)	1:A:3:DVA:HG22	1:A:3:DVA:HA	8	0.73
(1,33)	1:A:3:DVA:HG23	1:A:3:DVA:HA	8	0.73
(1,66)	1:A:7:DPR:HD3	1:A:7:DPR:HG3	2	0.71
(1,59)	1:A:6:PRO:HD2	1:A:5:ILE:HA	16	0.71
(1,66)	1:A:7:DPR:HD3	1:A:7:DPR:HG3	13	0.69
(1,61)	1:A:7:DPR:HA	1:A:8:GLU:H	12	0.69
(1,66)	1:A:7:DPR:HD3	1:A:7:DPR:HG3	6	0.68
(1,33)	1:A:3:DVA:HG21	1:A:3:DVA:HA	11	0.68
(1,33)	1:A:3:DVA:HG22	1:A:3:DVA:HA	11	0.68
(1,33)	1:A:3:DVA:HG23	1:A:3:DVA:HA	11	0.68
(1,33)	1:A:3:DVA:HG21	1:A:3:DVA:HA	18	0.68
(1,33)	1:A:3:DVA:HG22	1:A:3:DVA:HA	18	0.68
(1,33)	1:A:3:DVA:HG23	1:A:3:DVA:HA	18	0.68
(1,57)	1:A:6:PRO:HA	1:A:9:DLY:H	8	0.67
(1,33)	1:A:3:DVA:HG21	1:A:3:DVA:HA	2	0.67
(1,33)	1:A:3:DVA:HG22	1:A:3:DVA:HA	2	0.67
(1,33)	1:A:3:DVA:HG23	1:A:3:DVA:HA	2	0.67
(1,33)	1:A:3:DVA:HG21	1:A:3:DVA:HA	9	0.67
(1,33)	1:A:3:DVA:HG22	1:A:3:DVA:HA	9	0.67
(1,33)	1:A:3:DVA:HG23	1:A:3:DVA:HA	9	0.67
(1,61)	1:A:7:DPR:HA	1:A:8:GLU:H	1	0.66
(1,33)	1:A:3:DVA:HG21	1:A:3:DVA:HA	10	0.66
(1,33)	1:A:3:DVA:HG22	1:A:3:DVA:HA	10	0.66
(1,33)	1:A:3:DVA:HG23	1:A:3:DVA:HA	10	0.66
(1,74)	1:A:9:DLY:HE3	1:A:9:DLY:HA	18	0.65
(1,70)	1:A:8:GLU:HB2	1:A:8:GLU:H	19	0.65
(1,33)	1:A:3:DVA:HG21	1:A:3:DVA:HA	3	0.65
(1,33)	1:A:3:DVA:HG22	1:A:3:DVA:HA	3	0.65

Continued on next page...

Continued from previous page...

Key	Atom-1	Atom-2	Model ID	Violation (Å)
(1,33)	1:A:3:DVA:HG23	1:A:3:DVA:HA	3	0.65
(1,84)	1:A:10:VAL:HG11	1:A:11:CYS:H	11	0.64
(1,84)	1:A:10:VAL:HG12	1:A:11:CYS:H	11	0.64
(1,84)	1:A:10:VAL:HG13	1:A:11:CYS:H	11	0.64
(1,84)	1:A:10:VAL:HG21	1:A:11:CYS:H	11	0.64
(1,84)	1:A:10:VAL:HG22	1:A:11:CYS:H	11	0.64
(1,84)	1:A:10:VAL:HG23	1:A:11:CYS:H	11	0.64
(1,59)	1:A:6:PRO:HD2	1:A:5:ILE:HA	10	0.64
(1,59)	1:A:6:PRO:HD2	1:A:5:ILE:HA	15	0.64
(1,66)	1:A:7:DPR:HD3	1:A:7:DPR:HG3	16	0.63
(1,45)	1:A:5:ILE:HG12	1:A:5:ILE:H	4	0.63
(1,45)	1:A:5:ILE:HG13	1:A:5:ILE:H	4	0.63
(1,44)	1:A:5:ILE:HG12	1:A:5:ILE:H	4	0.63
(1,44)	1:A:5:ILE:HG13	1:A:5:ILE:H	4	0.63
(1,22)	1:A:2:DPR:HD3	1:A:2:DPR:HG3	13	0.63
(1,59)	1:A:6:PRO:HD2	1:A:5:ILE:HA	17	0.62
(1,22)	1:A:2:DPR:HD3	1:A:2:DPR:HG3	9	0.62
(1,68)	1:A:8:GLU:HB3	1:A:8:GLU:H	9	0.61
(1,66)	1:A:7:DPR:HD3	1:A:7:DPR:HG3	8	0.61
(1,61)	1:A:7:DPR:HA	1:A:8:GLU:H	7	0.61
(1,22)	1:A:2:DPR:HD3	1:A:2:DPR:HG3	15	0.61
(1,48)	1:A:5:ILE:HG21	1:A:6:PRO:HD2	2	0.6
(1,48)	1:A:5:ILE:HG22	1:A:6:PRO:HD2	2	0.6
(1,48)	1:A:5:ILE:HG23	1:A:6:PRO:HD2	2	0.6
(1,33)	1:A:3:DVA:HG21	1:A:3:DVA:HA	1	0.6
(1,33)	1:A:3:DVA:HG22	1:A:3:DVA:HA	1	0.6
(1,33)	1:A:3:DVA:HG23	1:A:3:DVA:HA	1	0.6
(1,33)	1:A:3:DVA:HG21	1:A:3:DVA:HA	15	0.6
(1,33)	1:A:3:DVA:HG22	1:A:3:DVA:HA	15	0.6
(1,33)	1:A:3:DVA:HG23	1:A:3:DVA:HA	15	0.6
(1,22)	1:A:2:DPR:HD3	1:A:2:DPR:HG3	16	0.6
(1,85)	1:A:10:VAL:HG11	1:A:12:DGL:HG3	4	0.59
(1,85)	1:A:10:VAL:HG12	1:A:12:DGL:HG3	4	0.59
(1,85)	1:A:10:VAL:HG13	1:A:12:DGL:HG3	4	0.59
(1,85)	1:A:10:VAL:HG21	1:A:12:DGL:HG3	4	0.59
(1,85)	1:A:10:VAL:HG22	1:A:12:DGL:HG3	4	0.59
(1,85)	1:A:10:VAL:HG23	1:A:12:DGL:HG3	4	0.59
(1,85)	1:A:10:VAL:HG11	1:A:12:DGL:HG3	9	0.59
(1,85)	1:A:10:VAL:HG12	1:A:12:DGL:HG3	9	0.59
(1,85)	1:A:10:VAL:HG13	1:A:12:DGL:HG3	9	0.59
(1,85)	1:A:10:VAL:HG21	1:A:12:DGL:HG3	9	0.59
(1,85)	1:A:10:VAL:HG22	1:A:12:DGL:HG3	9	0.59

Continued on next page...

Continued from previous page...

Key	Atom-1	Atom-2	Model ID	Violation (Å)
(1,85)	1:A:10:VAL:HG23	1:A:12:DGL:HG3	9	0.59
(1,8)	1:A:6:PRO:HD2	1:A:6:PRO:HD3	8	0.59
(1,33)	1:A:3:DVA:HG21	1:A:3:DVA:HA	17	0.59
(1,33)	1:A:3:DVA:HG22	1:A:3:DVA:HA	17	0.59
(1,33)	1:A:3:DVA:HG23	1:A:3:DVA:HA	17	0.59
(1,22)	1:A:2:DPR:HD3	1:A:2:DPR:HG3	12	0.59
(1,8)	1:A:6:PRO:HD2	1:A:6:PRO:HD3	2	0.58
(1,8)	1:A:6:PRO:HD2	1:A:6:PRO:HD3	6	0.58
(1,8)	1:A:6:PRO:HD2	1:A:6:PRO:HD3	9	0.58
(1,33)	1:A:3:DVA:HG21	1:A:3:DVA:HA	5	0.58
(1,33)	1:A:3:DVA:HG22	1:A:3:DVA:HA	5	0.58
(1,33)	1:A:3:DVA:HG23	1:A:3:DVA:HA	5	0.58
(1,22)	1:A:2:DPR:HD3	1:A:2:DPR:HG3	6	0.58
(1,66)	1:A:7:DPR:HD3	1:A:7:DPR:HG3	7	0.57
(1,59)	1:A:6:PRO:HD2	1:A:5:ILE:HA	7	0.57
(1,57)	1:A:6:PRO:HA	1:A:9:DLY:H	15	0.56
(1,46)	1:A:5:ILE:HG21	1:A:5:ILE:H	16	0.56
(1,46)	1:A:5:ILE:HG22	1:A:5:ILE:H	16	0.56
(1,46)	1:A:5:ILE:HG23	1:A:5:ILE:H	16	0.56
(1,33)	1:A:3:DVA:HG21	1:A:3:DVA:HA	14	0.56
(1,33)	1:A:3:DVA:HG22	1:A:3:DVA:HA	14	0.56
(1,33)	1:A:3:DVA:HG23	1:A:3:DVA:HA	14	0.56
(1,27)	1:A:3:DVA:HB	1:A:4:CYS:H	13	0.56
(1,22)	1:A:2:DPR:HD3	1:A:2:DPR:HG3	10	0.56
(1,22)	1:A:2:DPR:HD3	1:A:2:DPR:HG3	14	0.56
(1,8)	1:A:6:PRO:HD2	1:A:6:PRO:HD3	1	0.55
(1,66)	1:A:7:DPR:HD3	1:A:7:DPR:HG3	19	0.55
(1,58)	1:A:6:PRO:HD3	1:A:5:ILE:HA	6	0.55
(1,22)	1:A:2:DPR:HD3	1:A:2:DPR:HG3	3	0.55
(1,8)	1:A:6:PRO:HD2	1:A:6:PRO:HD3	17	0.54
(1,66)	1:A:7:DPR:HD3	1:A:7:DPR:HG3	4	0.54
(1,66)	1:A:7:DPR:HD3	1:A:7:DPR:HG3	11	0.54
(1,61)	1:A:7:DPR:HA	1:A:8:GLU:H	5	0.54
(1,61)	1:A:7:DPR:HA	1:A:8:GLU:H	16	0.54
(1,58)	1:A:6:PRO:HD3	1:A:5:ILE:HA	20	0.54
(1,33)	1:A:3:DVA:HG21	1:A:3:DVA:HA	19	0.54
(1,33)	1:A:3:DVA:HG22	1:A:3:DVA:HA	19	0.54
(1,33)	1:A:3:DVA:HG23	1:A:3:DVA:HA	19	0.54
(1,91)	1:A:11:CYS:HB3	1:A:11:CYS:H	18	0.53
(1,8)	1:A:6:PRO:HD2	1:A:6:PRO:HD3	3	0.53
(1,8)	1:A:6:PRO:HD2	1:A:6:PRO:HD3	11	0.53
(1,8)	1:A:6:PRO:HD2	1:A:6:PRO:HD3	12	0.53

Continued on next page...

Continued from previous page...

Key	Atom-1	Atom-2	Model ID	Violation (Å)
(1,68)	1:A:8:GLU:HB3	1:A:8:GLU:H	3	0.53
(1,66)	1:A:7:DPR:HD3	1:A:7:DPR:HG3	12	0.53
(1,66)	1:A:7:DPR:HD3	1:A:7:DPR:HG3	17	0.53
(1,48)	1:A:5:ILE:HG21	1:A:6:PRO:HD2	4	0.53
(1,48)	1:A:5:ILE:HG22	1:A:6:PRO:HD2	4	0.53
(1,48)	1:A:5:ILE:HG23	1:A:6:PRO:HD2	4	0.53
(1,46)	1:A:5:ILE:HG21	1:A:5:ILE:H	17	0.53
(1,46)	1:A:5:ILE:HG22	1:A:5:ILE:H	17	0.53
(1,46)	1:A:5:ILE:HG23	1:A:5:ILE:H	17	0.53
(1,31)	1:A:3:DVA:HG11	1:A:11:CYS:HB3	8	0.53
(1,31)	1:A:3:DVA:HG12	1:A:11:CYS:HB3	8	0.53
(1,31)	1:A:3:DVA:HG13	1:A:11:CYS:HB3	8	0.53
(1,22)	1:A:2:DPR:HD3	1:A:2:DPR:HG3	7	0.53
(1,16)	1:A:1:HIS:HB2	1:A:1:HIS:HD2	9	0.53
(1,16)	1:A:1:HIS:HB3	1:A:1:HIS:HD2	9	0.53
(1,8)	1:A:6:PRO:HD2	1:A:6:PRO:HD3	14	0.52
(1,78)	1:A:10:VAL:HB	1:A:11:CYS:H	8	0.52
(1,58)	1:A:6:PRO:HD3	1:A:5:ILE:HA	12	0.52
(1,33)	1:A:3:DVA:HG21	1:A:3:DVA:HA	13	0.52
(1,33)	1:A:3:DVA:HG22	1:A:3:DVA:HA	13	0.52
(1,33)	1:A:3:DVA:HG23	1:A:3:DVA:HA	13	0.52
(1,22)	1:A:2:DPR:HD3	1:A:2:DPR:HG3	19	0.52
(1,79)	1:A:10:VAL:HG11	1:A:1:HIS:HB2	8	0.51
(1,79)	1:A:10:VAL:HG11	1:A:1:HIS:HB3	8	0.51
(1,79)	1:A:10:VAL:HG12	1:A:1:HIS:HB2	8	0.51
(1,79)	1:A:10:VAL:HG12	1:A:1:HIS:HB3	8	0.51
(1,79)	1:A:10:VAL:HG13	1:A:1:HIS:HB2	8	0.51
(1,79)	1:A:10:VAL:HG13	1:A:1:HIS:HB3	8	0.51
(1,79)	1:A:10:VAL:HG21	1:A:1:HIS:HB2	8	0.51
(1,79)	1:A:10:VAL:HG21	1:A:1:HIS:HB3	8	0.51
(1,79)	1:A:10:VAL:HG22	1:A:1:HIS:HB2	8	0.51
(1,79)	1:A:10:VAL:HG22	1:A:1:HIS:HB3	8	0.51
(1,79)	1:A:10:VAL:HG23	1:A:1:HIS:HB2	8	0.51
(1,79)	1:A:10:VAL:HG23	1:A:1:HIS:HB3	8	0.51
(1,66)	1:A:7:DPR:HD3	1:A:7:DPR:HG3	10	0.51
(1,8)	1:A:6:PRO:HD2	1:A:6:PRO:HD3	10	0.5
(1,8)	1:A:6:PRO:HD2	1:A:6:PRO:HD3	20	0.5
(1,78)	1:A:10:VAL:HB	1:A:11:CYS:H	17	0.5
(1,61)	1:A:7:DPR:HA	1:A:8:GLU:H	2	0.5
(1,61)	1:A:7:DPR:HA	1:A:8:GLU:H	13	0.5
(1,8)	1:A:6:PRO:HD2	1:A:6:PRO:HD3	4	0.49
(1,66)	1:A:7:DPR:HD3	1:A:7:DPR:HG3	20	0.49

Continued on next page...

Continued from previous page...

Key	Atom-1	Atom-2	Model ID	Violation (Å)
(1,46)	1:A:5:ILE:HG21	1:A:5:ILE:H	20	0.49
(1,46)	1:A:5:ILE:HG22	1:A:5:ILE:H	20	0.49
(1,46)	1:A:5:ILE:HG23	1:A:5:ILE:H	20	0.49
(1,33)	1:A:3:DVA:HG21	1:A:3:DVA:HA	12	0.49
(1,33)	1:A:3:DVA:HG22	1:A:3:DVA:HA	12	0.49
(1,33)	1:A:3:DVA:HG23	1:A:3:DVA:HA	12	0.49
(1,27)	1:A:3:DVA:HB	1:A:4:CYS:H	9	0.49
(1,22)	1:A:2:DPR:HD3	1:A:2:DPR:HG3	2	0.49
(1,22)	1:A:2:DPR:HD3	1:A:2:DPR:HG3	8	0.49
(1,8)	1:A:6:PRO:HD2	1:A:6:PRO:HD3	5	0.48
(1,8)	1:A:6:PRO:HD2	1:A:6:PRO:HD3	13	0.48
(1,33)	1:A:3:DVA:HG21	1:A:3:DVA:HA	4	0.48
(1,33)	1:A:3:DVA:HG22	1:A:3:DVA:HA	4	0.48
(1,33)	1:A:3:DVA:HG23	1:A:3:DVA:HA	4	0.48
(1,33)	1:A:3:DVA:HG21	1:A:3:DVA:HA	16	0.48
(1,33)	1:A:3:DVA:HG22	1:A:3:DVA:HA	16	0.48
(1,33)	1:A:3:DVA:HG23	1:A:3:DVA:HA	16	0.48
(1,22)	1:A:2:DPR:HD3	1:A:2:DPR:HG3	17	0.48
(1,70)	1:A:8:GLU:HB2	1:A:8:GLU:H	1	0.47
(1,68)	1:A:8:GLU:HB3	1:A:8:GLU:H	4	0.47
(1,68)	1:A:8:GLU:HB3	1:A:8:GLU:H	13	0.47
(1,98)	1:A:12:DGL:HB3	1:A:12:DGL:H	18	0.46
(1,8)	1:A:6:PRO:HD2	1:A:6:PRO:HD3	7	0.46
(1,78)	1:A:10:VAL:HB	1:A:11:CYS:H	1	0.46
(1,66)	1:A:7:DPR:HD3	1:A:7:DPR:HG3	18	0.46
(1,58)	1:A:6:PRO:HD3	1:A:5:ILE:HA	11	0.46
(1,31)	1:A:3:DVA:HG11	1:A:11:CYS:HB3	11	0.46
(1,31)	1:A:3:DVA:HG12	1:A:11:CYS:HB3	11	0.46
(1,31)	1:A:3:DVA:HG13	1:A:11:CYS:HB3	11	0.46
(1,22)	1:A:2:DPR:HD3	1:A:2:DPR:HG3	1	0.46
(1,22)	1:A:2:DPR:HD3	1:A:2:DPR:HG3	11	0.46
(1,16)	1:A:1:HIS:HB2	1:A:1:HIS:HD2	2	0.46
(1,16)	1:A:1:HIS:HB3	1:A:1:HIS:HD2	2	0.46
(1,97)	1:A:12:DGL:HB2	1:A:12:DGL:H	12	0.45
(1,8)	1:A:6:PRO:HD2	1:A:6:PRO:HD3	19	0.45
(1,61)	1:A:7:DPR:HA	1:A:8:GLU:H	6	0.45
(1,58)	1:A:6:PRO:HD3	1:A:5:ILE:HA	7	0.45
(1,33)	1:A:3:DVA:HG21	1:A:3:DVA:HA	7	0.45
(1,33)	1:A:3:DVA:HG22	1:A:3:DVA:HA	7	0.45
(1,33)	1:A:3:DVA:HG23	1:A:3:DVA:HA	7	0.45
(1,27)	1:A:3:DVA:HB	1:A:4:CYS:H	15	0.45
(1,16)	1:A:1:HIS:HB2	1:A:1:HIS:HD2	4	0.45

Continued on next page...

Continued from previous page...

Key	Atom-1	Atom-2	Model ID	Violation (Å)
(1,16)	1:A:1:HIS:HB3	1:A:1:HIS:HD2	4	0.45
(1,8)	1:A:6:PRO:HD2	1:A:6:PRO:HD3	15	0.44
(1,8)	1:A:6:PRO:HD2	1:A:6:PRO:HD3	16	0.44
(1,70)	1:A:8:GLU:HB2	1:A:8:GLU:H	14	0.44
(1,66)	1:A:7:DPR:HD3	1:A:7:DPR:HG3	5	0.44
(1,57)	1:A:6:PRO:HA	1:A:9:DLY:H	13	0.44
(1,85)	1:A:10:VAL:HG11	1:A:12:DGL:HG3	12	0.43
(1,85)	1:A:10:VAL:HG12	1:A:12:DGL:HG3	12	0.43
(1,85)	1:A:10:VAL:HG13	1:A:12:DGL:HG3	12	0.43
(1,85)	1:A:10:VAL:HG21	1:A:12:DGL:HG3	12	0.43
(1,85)	1:A:10:VAL:HG22	1:A:12:DGL:HG3	12	0.43
(1,85)	1:A:10:VAL:HG23	1:A:12:DGL:HG3	12	0.43
(1,85)	1:A:10:VAL:HG11	1:A:12:DGL:HG3	15	0.43
(1,85)	1:A:10:VAL:HG12	1:A:12:DGL:HG3	15	0.43
(1,85)	1:A:10:VAL:HG13	1:A:12:DGL:HG3	15	0.43
(1,85)	1:A:10:VAL:HG21	1:A:12:DGL:HG3	15	0.43
(1,85)	1:A:10:VAL:HG22	1:A:12:DGL:HG3	15	0.43
(1,85)	1:A:10:VAL:HG23	1:A:12:DGL:HG3	15	0.43
(1,79)	1:A:10:VAL:HG11	1:A:1:HIS:HB2	19	0.43
(1,79)	1:A:10:VAL:HG11	1:A:1:HIS:HB3	19	0.43
(1,79)	1:A:10:VAL:HG12	1:A:1:HIS:HB2	19	0.43
(1,79)	1:A:10:VAL:HG12	1:A:1:HIS:HB3	19	0.43
(1,79)	1:A:10:VAL:HG13	1:A:1:HIS:HB2	19	0.43
(1,79)	1:A:10:VAL:HG13	1:A:1:HIS:HB3	19	0.43
(1,79)	1:A:10:VAL:HG21	1:A:1:HIS:HB2	19	0.43
(1,79)	1:A:10:VAL:HG21	1:A:1:HIS:HB3	19	0.43
(1,79)	1:A:10:VAL:HG22	1:A:1:HIS:HB2	19	0.43
(1,79)	1:A:10:VAL:HG22	1:A:1:HIS:HB3	19	0.43
(1,79)	1:A:10:VAL:HG23	1:A:1:HIS:HB2	19	0.43
(1,79)	1:A:10:VAL:HG23	1:A:1:HIS:HB3	19	0.43
(1,70)	1:A:8:GLU:HB2	1:A:8:GLU:H	7	0.43
(1,70)	1:A:8:GLU:HB2	1:A:8:GLU:H	9	0.43
(1,66)	1:A:7:DPR:HD3	1:A:7:DPR:HG3	3	0.43
(1,61)	1:A:7:DPR:HA	1:A:8:GLU:H	15	0.43
(1,57)	1:A:6:PRO:HA	1:A:9:DLY:H	11	0.43
(1,46)	1:A:5:ILE:HG21	1:A:5:ILE:H	19	0.43
(1,46)	1:A:5:ILE:HG22	1:A:5:ILE:H	19	0.43
(1,46)	1:A:5:ILE:HG23	1:A:5:ILE:H	19	0.43
(1,93)	1:A:11:CYS:HB2	1:A:11:CYS:H	18	0.42
(1,8)	1:A:6:PRO:HD2	1:A:6:PRO:HD3	18	0.42
(1,78)	1:A:10:VAL:HB	1:A:11:CYS:H	3	0.42
(1,70)	1:A:8:GLU:HB2	1:A:8:GLU:H	16	0.42

Continued on next page...

Continued from previous page...

Key	Atom-1	Atom-2	Model ID	Violation (Å)
(1,7)	1:A:6:PRO:HA	1:A:7:DPR:HD3	16	0.42
(1,66)	1:A:7:DPR:HD3	1:A:7:DPR:HG3	9	0.42
(1,63)	1:A:7:DPR:HD2	1:A:9:DLY:H	11	0.42
(1,59)	1:A:6:PRO:HD2	1:A:5:ILE:HA	14	0.42
(1,22)	1:A:2:DPR:HD3	1:A:2:DPR:HG3	5	0.42
(1,78)	1:A:10:VAL:HB	1:A:11:CYS:H	14	0.41
(1,66)	1:A:7:DPR:HD3	1:A:7:DPR:HG3	1	0.41
(1,66)	1:A:7:DPR:HD3	1:A:7:DPR:HG3	15	0.41
(1,58)	1:A:6:PRO:HD3	1:A:5:ILE:HA	17	0.41
(1,22)	1:A:2:DPR:HD3	1:A:2:DPR:HG3	4	0.41
(1,93)	1:A:11:CYS:HB2	1:A:11:CYS:H	1	0.4
(1,66)	1:A:7:DPR:HD3	1:A:7:DPR:HG3	14	0.4
(1,27)	1:A:3:DVA:HB	1:A:4:CYS:H	6	0.4
(1,22)	1:A:2:DPR:HD3	1:A:2:DPR:HG3	18	0.4
(1,93)	1:A:11:CYS:HB2	1:A:11:CYS:H	4	0.39
(1,57)	1:A:6:PRO:HA	1:A:9:DLY:H	9	0.39
(1,48)	1:A:5:ILE:HG21	1:A:6:PRO:HD2	3	0.39
(1,48)	1:A:5:ILE:HG22	1:A:6:PRO:HD2	3	0.39
(1,48)	1:A:5:ILE:HG23	1:A:6:PRO:HD2	3	0.39
(1,43)	1:A:5:ILE:HD11	1:A:5:ILE:H	13	0.39
(1,43)	1:A:5:ILE:HD12	1:A:5:ILE:H	13	0.39
(1,43)	1:A:5:ILE:HD13	1:A:5:ILE:H	13	0.39
(1,68)	1:A:8:GLU:HB3	1:A:8:GLU:H	15	0.38
(1,61)	1:A:7:DPR:HA	1:A:8:GLU:H	8	0.38
(1,59)	1:A:6:PRO:HD2	1:A:5:ILE:HA	6	0.38
(1,31)	1:A:3:DVA:HG11	1:A:11:CYS:HB3	16	0.38
(1,31)	1:A:3:DVA:HG12	1:A:11:CYS:HB3	16	0.38
(1,31)	1:A:3:DVA:HG13	1:A:11:CYS:HB3	16	0.38
(1,71)	1:A:8:GLU:HG2	1:A:8:GLU:H	7	0.37
(1,71)	1:A:8:GLU:HG3	1:A:8:GLU:H	7	0.37
(1,33)	1:A:3:DVA:HG21	1:A:3:DVA:HA	6	0.37
(1,33)	1:A:3:DVA:HG22	1:A:3:DVA:HA	6	0.37
(1,33)	1:A:3:DVA:HG23	1:A:3:DVA:HA	6	0.37
(1,3)	1:A:4:CYS:HA	1:A:5:ILE:H	11	0.37
(1,20)	1:A:2:DPR:HD2	1:A:3:DVA:H	10	0.37
(1,97)	1:A:12:DGL:HB2	1:A:12:DGL:H	16	0.36
(1,91)	1:A:11:CYS:HB3	1:A:11:CYS:H	7	0.36
(1,85)	1:A:10:VAL:HG11	1:A:12:DGL:HG3	19	0.36
(1,85)	1:A:10:VAL:HG12	1:A:12:DGL:HG3	19	0.36
(1,85)	1:A:10:VAL:HG13	1:A:12:DGL:HG3	19	0.36
(1,85)	1:A:10:VAL:HG21	1:A:12:DGL:HG3	19	0.36
(1,85)	1:A:10:VAL:HG22	1:A:12:DGL:HG3	19	0.36

Continued on next page...

Continued from previous page...

Key	Atom-1	Atom-2	Model ID	Violation (Å)
(1,85)	1:A:10:VAL:HG23	1:A:12:DGL:HG3	19	0.36
(1,78)	1:A:10:VAL:HB	1:A:11:CYS:H	19	0.36
(1,46)	1:A:5:ILE:HG21	1:A:5:ILE:H	18	0.36
(1,46)	1:A:5:ILE:HG22	1:A:5:ILE:H	18	0.36
(1,46)	1:A:5:ILE:HG23	1:A:5:ILE:H	18	0.36
(1,31)	1:A:3:DVA:HG11	1:A:11:CYS:HB3	18	0.36
(1,31)	1:A:3:DVA:HG12	1:A:11:CYS:HB3	18	0.36
(1,31)	1:A:3:DVA:HG13	1:A:11:CYS:HB3	18	0.36
(1,97)	1:A:12:DGL:HB2	1:A:12:DGL:H	17	0.35
(1,77)	1:A:10:VAL:HB	1:A:10:VAL:H	16	0.35
(1,70)	1:A:8:GLU:HB2	1:A:8:GLU:H	11	0.35
(1,70)	1:A:8:GLU:HB2	1:A:8:GLU:H	18	0.35
(1,16)	1:A:1:HIS:HB2	1:A:1:HIS:HD2	14	0.35
(1,16)	1:A:1:HIS:HB3	1:A:1:HIS:HD2	14	0.35
(1,97)	1:A:12:DGL:HB2	1:A:12:DGL:H	19	0.34
(1,85)	1:A:10:VAL:HG11	1:A:12:DGL:HG3	7	0.34
(1,85)	1:A:10:VAL:HG12	1:A:12:DGL:HG3	7	0.34
(1,85)	1:A:10:VAL:HG13	1:A:12:DGL:HG3	7	0.34
(1,85)	1:A:10:VAL:HG21	1:A:12:DGL:HG3	7	0.34
(1,85)	1:A:10:VAL:HG22	1:A:12:DGL:HG3	7	0.34
(1,85)	1:A:10:VAL:HG23	1:A:12:DGL:HG3	7	0.34
(1,78)	1:A:10:VAL:HB	1:A:11:CYS:H	15	0.34
(1,70)	1:A:8:GLU:HB2	1:A:8:GLU:H	2	0.34
(1,70)	1:A:8:GLU:HB2	1:A:8:GLU:H	12	0.34
(1,68)	1:A:8:GLU:HB3	1:A:8:GLU:H	2	0.34
(1,68)	1:A:8:GLU:HB3	1:A:8:GLU:H	12	0.34
(1,65)	1:A:7:DPR:HD3	1:A:7:DPR:HG2	17	0.34
(1,45)	1:A:5:ILE:HG12	1:A:5:ILE:H	3	0.34
(1,45)	1:A:5:ILE:HG13	1:A:5:ILE:H	3	0.34
(1,44)	1:A:5:ILE:HG12	1:A:5:ILE:H	3	0.34
(1,44)	1:A:5:ILE:HG13	1:A:5:ILE:H	3	0.34
(1,43)	1:A:5:ILE:HD11	1:A:5:ILE:H	15	0.34
(1,43)	1:A:5:ILE:HD12	1:A:5:ILE:H	15	0.34
(1,43)	1:A:5:ILE:HD13	1:A:5:ILE:H	15	0.34
(1,33)	1:A:3:DVA:HG21	1:A:3:DVA:HA	20	0.34
(1,33)	1:A:3:DVA:HG22	1:A:3:DVA:HA	20	0.34
(1,33)	1:A:3:DVA:HG23	1:A:3:DVA:HA	20	0.34
(1,16)	1:A:1:HIS:HB2	1:A:1:HIS:HD2	6	0.34
(1,16)	1:A:1:HIS:HB3	1:A:1:HIS:HD2	6	0.34
(1,16)	1:A:1:HIS:HB2	1:A:1:HIS:HD2	8	0.34
(1,16)	1:A:1:HIS:HB3	1:A:1:HIS:HD2	8	0.34
(1,16)	1:A:1:HIS:HB2	1:A:1:HIS:HD2	10	0.34

Continued on next page...

Continued from previous page...

Key	Atom-1	Atom-2	Model ID	Violation (Å)
(1,16)	1:A:1:HIS:HB3	1:A:1:HIS:HD2	10	0.34
(1,78)	1:A:10:VAL:HB	1:A:11:CYS:H	2	0.33
(1,70)	1:A:8:GLU:HB2	1:A:8:GLU:H	3	0.33
(1,58)	1:A:6:PRO:HD3	1:A:5:ILE:HA	5	0.33
(1,45)	1:A:5:ILE:HG12	1:A:5:ILE:H	10	0.33
(1,45)	1:A:5:ILE:HG13	1:A:5:ILE:H	10	0.33
(1,44)	1:A:5:ILE:HG12	1:A:5:ILE:H	10	0.33
(1,44)	1:A:5:ILE:HG13	1:A:5:ILE:H	10	0.33
(1,3)	1:A:4:CYS:HA	1:A:5:ILE:H	9	0.33
(1,16)	1:A:1:HIS:HB2	1:A:1:HIS:HD2	3	0.33
(1,16)	1:A:1:HIS:HB3	1:A:1:HIS:HD2	3	0.33
(1,16)	1:A:1:HIS:HB2	1:A:1:HIS:HD2	5	0.33
(1,16)	1:A:1:HIS:HB3	1:A:1:HIS:HD2	5	0.33
(1,12)	1:A:10:VAL:HG11	1:A:10:VAL:HA	1	0.33
(1,12)	1:A:10:VAL:HG12	1:A:10:VAL:HA	1	0.33
(1,12)	1:A:10:VAL:HG13	1:A:10:VAL:HA	1	0.33
(1,12)	1:A:10:VAL:HG21	1:A:10:VAL:HA	1	0.33
(1,12)	1:A:10:VAL:HG22	1:A:10:VAL:HA	1	0.33
(1,12)	1:A:10:VAL:HG23	1:A:10:VAL:HA	1	0.33
(1,91)	1:A:11:CYS:HB3	1:A:11:CYS:H	19	0.32
(1,68)	1:A:8:GLU:HB3	1:A:8:GLU:H	14	0.32
(1,37)	1:A:4:CYS:HB3	1:A:4:CYS:H	13	0.32
(1,78)	1:A:10:VAL:HB	1:A:11:CYS:H	10	0.31
(1,60)	1:A:7:DPR:HA	1:A:7:DPR:HB2	20	0.31
(1,45)	1:A:5:ILE:HG12	1:A:5:ILE:H	6	0.31
(1,45)	1:A:5:ILE:HG13	1:A:5:ILE:H	6	0.31
(1,44)	1:A:5:ILE:HG12	1:A:5:ILE:H	6	0.31
(1,44)	1:A:5:ILE:HG13	1:A:5:ILE:H	6	0.31
(1,91)	1:A:11:CYS:HB3	1:A:11:CYS:H	15	0.3
(1,78)	1:A:10:VAL:HB	1:A:11:CYS:H	13	0.3
(1,63)	1:A:7:DPR:HD2	1:A:9:DLY:H	3	0.3
(1,21)	1:A:2:DPR:HD3	1:A:2:DPR:HB3	11	0.3
(1,58)	1:A:6:PRO:HD3	1:A:5:ILE:HA	15	0.29
(1,27)	1:A:3:DVA:HB	1:A:4:CYS:H	17	0.29
(1,16)	1:A:1:HIS:HB2	1:A:1:HIS:HD2	18	0.29
(1,16)	1:A:1:HIS:HB3	1:A:1:HIS:HD2	18	0.29
(1,11)	1:A:10:VAL:HA	1:A:11:CYS:H	16	0.29
(1,78)	1:A:10:VAL:HB	1:A:11:CYS:H	4	0.28
(1,71)	1:A:8:GLU:HG2	1:A:8:GLU:H	19	0.28
(1,71)	1:A:8:GLU:HG3	1:A:8:GLU:H	19	0.28
(1,60)	1:A:7:DPR:HA	1:A:7:DPR:HB2	2	0.28
(1,60)	1:A:7:DPR:HA	1:A:7:DPR:HB2	14	0.28

Continued on next page...

Continued from previous page...

Key	Atom-1	Atom-2	Model ID	Violation (Å)
(1,59)	1:A:6:PRO:HD2	1:A:5:ILE:HA	20	0.28
(1,31)	1:A:3:DVA:HG11	1:A:11:CYS:HB3	9	0.28
(1,31)	1:A:3:DVA:HG12	1:A:11:CYS:HB3	9	0.28
(1,31)	1:A:3:DVA:HG13	1:A:11:CYS:HB3	9	0.28
(1,27)	1:A:3:DVA:HB	1:A:4:CYS:H	7	0.28
(1,27)	1:A:3:DVA:HB	1:A:4:CYS:H	8	0.28
(1,16)	1:A:1:HIS:HB2	1:A:1:HIS:HD2	7	0.28
(1,16)	1:A:1:HIS:HB3	1:A:1:HIS:HD2	7	0.28
(1,16)	1:A:1:HIS:HB2	1:A:1:HIS:HD2	19	0.28
(1,16)	1:A:1:HIS:HB3	1:A:1:HIS:HD2	19	0.28
(1,11)	1:A:10:VAL:HA	1:A:11:CYS:H	10	0.28
(1,68)	1:A:8:GLU:HB3	1:A:8:GLU:H	11	0.27
(1,60)	1:A:7:DPR:HA	1:A:7:DPR:HB2	7	0.27
(1,60)	1:A:7:DPR:HA	1:A:7:DPR:HB2	12	0.27
(1,58)	1:A:6:PRO:HD3	1:A:5:ILE:HA	4	0.27
(1,57)	1:A:6:PRO:HA	1:A:9:DLY:H	3	0.27
(1,27)	1:A:3:DVA:HB	1:A:4:CYS:H	5	0.27
(1,16)	1:A:1:HIS:HB2	1:A:1:HIS:HD2	11	0.27
(1,16)	1:A:1:HIS:HB3	1:A:1:HIS:HD2	11	0.27
(1,16)	1:A:1:HIS:HB2	1:A:1:HIS:HD2	16	0.27
(1,16)	1:A:1:HIS:HB3	1:A:1:HIS:HD2	16	0.27
(1,91)	1:A:11:CYS:HB3	1:A:11:CYS:H	20	0.26
(1,85)	1:A:10:VAL:HG11	1:A:12:DGL:HG3	1	0.26
(1,85)	1:A:10:VAL:HG12	1:A:12:DGL:HG3	1	0.26
(1,85)	1:A:10:VAL:HG13	1:A:12:DGL:HG3	1	0.26
(1,85)	1:A:10:VAL:HG21	1:A:12:DGL:HG3	1	0.26
(1,85)	1:A:10:VAL:HG22	1:A:12:DGL:HG3	1	0.26
(1,85)	1:A:10:VAL:HG23	1:A:12:DGL:HG3	1	0.26
(1,58)	1:A:6:PRO:HD3	1:A:5:ILE:HA	8	0.26
(1,27)	1:A:3:DVA:HB	1:A:4:CYS:H	1	0.26
(1,11)	1:A:10:VAL:HA	1:A:11:CYS:H	3	0.26
(1,97)	1:A:12:DGL:HB2	1:A:12:DGL:H	6	0.25
(1,93)	1:A:11:CYS:HB2	1:A:11:CYS:H	19	0.25
(1,78)	1:A:10:VAL:HB	1:A:11:CYS:H	7	0.25
(1,60)	1:A:7:DPR:HA	1:A:7:DPR:HB2	6	0.25
(1,56)	1:A:6:PRO:HA	1:A:8:GLU:H	15	0.25
(1,3)	1:A:4:CYS:HA	1:A:5:ILE:H	3	0.25
(1,3)	1:A:4:CYS:HA	1:A:5:ILE:H	10	0.25
(1,20)	1:A:2:DPR:HD2	1:A:3:DVA:H	14	0.25
(1,16)	1:A:1:HIS:HB2	1:A:1:HIS:HD2	15	0.25
(1,16)	1:A:1:HIS:HB3	1:A:1:HIS:HD2	15	0.25
(1,13)	1:A:11:CYS:HA	1:A:12:DGL:H	15	0.25

Continued on next page...

Continued from previous page...

Key	Atom-1	Atom-2	Model ID	Violation (Å)
(1,97)	1:A:12:DGL:HB2	1:A:12:DGL:H	7	0.24
(1,70)	1:A:8:GLU:HB2	1:A:8:GLU:H	4	0.24
(1,70)	1:A:8:GLU:HB2	1:A:8:GLU:H	10	0.24
(1,70)	1:A:8:GLU:HB2	1:A:8:GLU:H	17	0.24
(1,2)	1:A:3:DVA:HA	1:A:4:CYS:H	3	0.24
(1,13)	1:A:11:CYS:HA	1:A:12:DGL:H	10	0.24
(1,13)	1:A:11:CYS:HA	1:A:12:DGL:H	14	0.24
(1,6)	1:A:6:PRO:HA	1:A:7:DPR:HD2	12	0.23
(1,59)	1:A:6:PRO:HD2	1:A:5:ILE:HA	3	0.23
(1,3)	1:A:4:CYS:HA	1:A:5:ILE:H	17	0.23
(1,16)	1:A:1:HIS:HB2	1:A:1:HIS:HD2	1	0.23
(1,16)	1:A:1:HIS:HB3	1:A:1:HIS:HD2	1	0.23
(1,16)	1:A:1:HIS:HB2	1:A:1:HIS:HD2	13	0.23
(1,16)	1:A:1:HIS:HB3	1:A:1:HIS:HD2	13	0.23
(1,12)	1:A:10:VAL:HG11	1:A:10:VAL:HA	19	0.23
(1,12)	1:A:10:VAL:HG12	1:A:10:VAL:HA	19	0.23
(1,12)	1:A:10:VAL:HG13	1:A:10:VAL:HA	19	0.23
(1,12)	1:A:10:VAL:HG21	1:A:10:VAL:HA	19	0.23
(1,12)	1:A:10:VAL:HG22	1:A:10:VAL:HA	19	0.23
(1,12)	1:A:10:VAL:HG23	1:A:10:VAL:HA	19	0.23
(1,97)	1:A:12:DGL:HB2	1:A:12:DGL:H	9	0.22
(1,93)	1:A:11:CYS:HB2	1:A:11:CYS:H	2	0.22
(1,78)	1:A:10:VAL:HB	1:A:11:CYS:H	12	0.22
(1,70)	1:A:8:GLU:HB2	1:A:8:GLU:H	13	0.22
(1,60)	1:A:7:DPR:HA	1:A:7:DPR:HB2	8	0.22
(1,60)	1:A:7:DPR:HA	1:A:7:DPR:HB2	19	0.22
(1,31)	1:A:3:DVA:HG11	1:A:11:CYS:HB3	19	0.22
(1,31)	1:A:3:DVA:HG12	1:A:11:CYS:HB3	19	0.22
(1,31)	1:A:3:DVA:HG13	1:A:11:CYS:HB3	19	0.22
(1,2)	1:A:3:DVA:HA	1:A:4:CYS:H	11	0.22
(1,2)	1:A:3:DVA:HA	1:A:4:CYS:H	14	0.22
(1,63)	1:A:7:DPR:HD2	1:A:9:DLY:H	5	0.21
(1,60)	1:A:7:DPR:HA	1:A:7:DPR:HB2	9	0.21
(1,59)	1:A:6:PRO:HD2	1:A:5:ILE:HA	11	0.21
(1,52)	1:A:6:PRO:HA	1:A:6:PRO:HB2	1	0.21
(1,52)	1:A:6:PRO:HA	1:A:6:PRO:HB2	15	0.21
(1,5)	1:A:6:PRO:HA	1:A:6:PRO:HB3	10	0.21
(1,31)	1:A:3:DVA:HG11	1:A:11:CYS:HB3	7	0.21
(1,31)	1:A:3:DVA:HG12	1:A:11:CYS:HB3	7	0.21
(1,31)	1:A:3:DVA:HG13	1:A:11:CYS:HB3	7	0.21
(1,3)	1:A:4:CYS:HA	1:A:5:ILE:H	6	0.21
(1,3)	1:A:4:CYS:HA	1:A:5:ILE:H	12	0.21

Continued on next page...

Continued from previous page...

Key	Atom-1	Atom-2	Model ID	Violation (Å)
(1,27)	1:A:3:DVA:HB	1:A:4:CYS:H	11	0.21
(1,13)	1:A:11:CYS:HA	1:A:12:DGL:H	1	0.21
(1,13)	1:A:11:CYS:HA	1:A:12:DGL:H	20	0.21
(1,12)	1:A:10:VAL:HG11	1:A:10:VAL:HA	18	0.21
(1,12)	1:A:10:VAL:HG12	1:A:10:VAL:HA	18	0.21
(1,12)	1:A:10:VAL:HG13	1:A:10:VAL:HA	18	0.21
(1,12)	1:A:10:VAL:HG21	1:A:10:VAL:HA	18	0.21
(1,12)	1:A:10:VAL:HG22	1:A:10:VAL:HA	18	0.21
(1,12)	1:A:10:VAL:HG23	1:A:10:VAL:HA	18	0.21
(1,85)	1:A:10:VAL:HG11	1:A:12:DGL:HG3	13	0.2
(1,85)	1:A:10:VAL:HG12	1:A:12:DGL:HG3	13	0.2
(1,85)	1:A:10:VAL:HG13	1:A:12:DGL:HG3	13	0.2
(1,85)	1:A:10:VAL:HG21	1:A:12:DGL:HG3	13	0.2
(1,85)	1:A:10:VAL:HG22	1:A:12:DGL:HG3	13	0.2
(1,85)	1:A:10:VAL:HG23	1:A:12:DGL:HG3	13	0.2
(1,78)	1:A:10:VAL:HB	1:A:11:CYS:H	5	0.2
(1,60)	1:A:7:DPR:HA	1:A:7:DPR:HB2	15	0.2
(1,20)	1:A:2:DPR:HD2	1:A:3:DVA:H	3	0.2
(1,12)	1:A:10:VAL:HG11	1:A:10:VAL:HA	11	0.2
(1,12)	1:A:10:VAL:HG12	1:A:10:VAL:HA	11	0.2
(1,12)	1:A:10:VAL:HG13	1:A:10:VAL:HA	11	0.2
(1,12)	1:A:10:VAL:HG21	1:A:10:VAL:HA	11	0.2
(1,12)	1:A:10:VAL:HG22	1:A:10:VAL:HA	11	0.2
(1,12)	1:A:10:VAL:HG23	1:A:10:VAL:HA	11	0.2
(1,97)	1:A:12:DGL:HB2	1:A:12:DGL:H	5	0.19
(1,97)	1:A:12:DGL:HB2	1:A:12:DGL:H	13	0.19
(1,74)	1:A:9:DLY:HE3	1:A:9:DLY:HA	12	0.19
(1,71)	1:A:8:GLU:HG2	1:A:8:GLU:H	16	0.19
(1,71)	1:A:8:GLU:HG3	1:A:8:GLU:H	16	0.19
(1,68)	1:A:8:GLU:HB3	1:A:8:GLU:H	1	0.19
(1,6)	1:A:6:PRO:HA	1:A:7:DPR:HD2	7	0.19
(1,58)	1:A:6:PRO:HD3	1:A:5:ILE:HA	1	0.19
(1,3)	1:A:4:CYS:HA	1:A:5:ILE:H	13	0.19
(1,2)	1:A:3:DVA:HA	1:A:4:CYS:H	18	0.19
(1,12)	1:A:10:VAL:HG11	1:A:10:VAL:HA	16	0.19
(1,12)	1:A:10:VAL:HG12	1:A:10:VAL:HA	16	0.19
(1,12)	1:A:10:VAL:HG13	1:A:10:VAL:HA	16	0.19
(1,12)	1:A:10:VAL:HG21	1:A:10:VAL:HA	16	0.19
(1,12)	1:A:10:VAL:HG22	1:A:10:VAL:HA	16	0.19
(1,12)	1:A:10:VAL:HG23	1:A:10:VAL:HA	16	0.19
(1,76)	1:A:10:VAL:HA	1:A:10:VAL:H	5	0.18
(1,74)	1:A:9:DLY:HE3	1:A:9:DLY:HA	4	0.18

Continued on next page...

Continued from previous page...

Key	Atom-1	Atom-2	Model ID	Violation (Å)
(1,5)	1:A:6:PRO:HA	1:A:6:PRO:HB3	1	0.18
(1,45)	1:A:5:ILE:HG12	1:A:5:ILE:H	5	0.18
(1,45)	1:A:5:ILE:HG13	1:A:5:ILE:H	5	0.18
(1,44)	1:A:5:ILE:HG12	1:A:5:ILE:H	5	0.18
(1,44)	1:A:5:ILE:HG13	1:A:5:ILE:H	5	0.18
(1,16)	1:A:1:HIS:HB2	1:A:1:HIS:HD2	12	0.18
(1,16)	1:A:1:HIS:HB3	1:A:1:HIS:HD2	12	0.18
(1,16)	1:A:1:HIS:HB2	1:A:1:HIS:HD2	17	0.18
(1,16)	1:A:1:HIS:HB3	1:A:1:HIS:HD2	17	0.18
(1,13)	1:A:11:CYS:HA	1:A:12:DGL:H	11	0.18
(1,11)	1:A:10:VAL:HA	1:A:11:CYS:H	9	0.18
(1,97)	1:A:12:DGL:HB2	1:A:12:DGL:H	14	0.17
(1,92)	1:A:11:CYS:HB3	1:A:12:DGL:H	2	0.17
(1,76)	1:A:10:VAL:HA	1:A:10:VAL:H	10	0.17
(1,74)	1:A:9:DLY:HE3	1:A:9:DLY:HA	14	0.17
(1,73)	1:A:9:DLY:HD3	1:A:9:DLY:H	10	0.17
(1,65)	1:A:7:DPR:HD3	1:A:7:DPR:HG2	16	0.17
(1,6)	1:A:6:PRO:HA	1:A:7:DPR:HD2	19	0.17
(1,52)	1:A:6:PRO:HA	1:A:6:PRO:HB2	4	0.17
(1,45)	1:A:5:ILE:HG12	1:A:5:ILE:H	11	0.17
(1,45)	1:A:5:ILE:HG13	1:A:5:ILE:H	11	0.17
(1,44)	1:A:5:ILE:HG12	1:A:5:ILE:H	11	0.17
(1,44)	1:A:5:ILE:HG13	1:A:5:ILE:H	11	0.17
(1,3)	1:A:4:CYS:HA	1:A:5:ILE:H	1	0.17
(1,27)	1:A:3:DVA:HB	1:A:4:CYS:H	10	0.17
(1,20)	1:A:2:DPR:HD2	1:A:3:DVA:H	19	0.17
(1,2)	1:A:3:DVA:HA	1:A:4:CYS:H	4	0.17
(1,92)	1:A:11:CYS:HB3	1:A:12:DGL:H	3	0.16
(1,78)	1:A:10:VAL:HB	1:A:11:CYS:H	20	0.16
(1,60)	1:A:7:DPR:HA	1:A:7:DPR:HB2	4	0.16
(1,56)	1:A:6:PRO:HA	1:A:8:GLU:H	13	0.16
(1,3)	1:A:4:CYS:HA	1:A:5:ILE:H	4	0.16
(1,3)	1:A:4:CYS:HA	1:A:5:ILE:H	7	0.16
(1,3)	1:A:4:CYS:HA	1:A:5:ILE:H	15	0.16
(1,21)	1:A:2:DPR:HD3	1:A:2:DPR:HB3	16	0.16
(1,2)	1:A:3:DVA:HA	1:A:4:CYS:H	19	0.16
(1,13)	1:A:11:CYS:HA	1:A:12:DGL:H	6	0.16
(1,12)	1:A:10:VAL:HG11	1:A:10:VAL:HA	5	0.16
(1,12)	1:A:10:VAL:HG12	1:A:10:VAL:HA	5	0.16
(1,12)	1:A:10:VAL:HG13	1:A:10:VAL:HA	5	0.16
(1,12)	1:A:10:VAL:HG21	1:A:10:VAL:HA	5	0.16
(1,12)	1:A:10:VAL:HG22	1:A:10:VAL:HA	5	0.16

Continued on next page...

Continued from previous page...

Key	Atom-1	Atom-2	Model ID	Violation (Å)
(1,12)	1:A:10:VAL:HG23	1:A:10:VAL:HA	5	0.16
(1,60)	1:A:7:DPR:HA	1:A:7:DPR:HB2	1	0.15
(1,60)	1:A:7:DPR:HA	1:A:7:DPR:HB2	13	0.15
(1,52)	1:A:6:PRO:HA	1:A:6:PRO:HB2	10	0.15
(1,52)	1:A:6:PRO:HA	1:A:6:PRO:HB2	16	0.15
(1,12)	1:A:10:VAL:HG11	1:A:10:VAL:HA	17	0.15
(1,12)	1:A:10:VAL:HG12	1:A:10:VAL:HA	17	0.15
(1,12)	1:A:10:VAL:HG13	1:A:10:VAL:HA	17	0.15
(1,12)	1:A:10:VAL:HG21	1:A:10:VAL:HA	17	0.15
(1,12)	1:A:10:VAL:HG22	1:A:10:VAL:HA	17	0.15
(1,12)	1:A:10:VAL:HG23	1:A:10:VAL:HA	17	0.15
(1,11)	1:A:10:VAL:HA	1:A:11:CYS:H	6	0.15
(1,97)	1:A:12:DGL:HB2	1:A:12:DGL:H	10	0.14
(1,93)	1:A:11:CYS:HB2	1:A:11:CYS:H	15	0.14
(1,75)	1:A:9:DLY:HG3	1:A:9:DLY:H	1	0.14
(1,65)	1:A:7:DPR:HD3	1:A:7:DPR:HG2	18	0.14
(1,6)	1:A:6:PRO:HA	1:A:7:DPR:HD2	14	0.14
(1,2)	1:A:3:DVA:HA	1:A:4:CYS:H	2	0.14
(1,13)	1:A:11:CYS:HA	1:A:12:DGL:H	5	0.14
(1,13)	1:A:11:CYS:HA	1:A:12:DGL:H	8	0.14
(1,13)	1:A:11:CYS:HA	1:A:12:DGL:H	9	0.14
(1,13)	1:A:11:CYS:HA	1:A:12:DGL:H	13	0.14
(1,11)	1:A:10:VAL:HA	1:A:11:CYS:H	18	0.14
(1,63)	1:A:7:DPR:HD2	1:A:9:DLY:H	9	0.13
(1,6)	1:A:6:PRO:HA	1:A:7:DPR:HD2	1	0.13
(1,59)	1:A:6:PRO:HD2	1:A:5:ILE:HA	9	0.13
(1,57)	1:A:6:PRO:HA	1:A:9:DLY:H	14	0.13
(1,45)	1:A:5:ILE:HG12	1:A:5:ILE:H	8	0.13
(1,45)	1:A:5:ILE:HG13	1:A:5:ILE:H	8	0.13
(1,44)	1:A:5:ILE:HG12	1:A:5:ILE:H	8	0.13
(1,44)	1:A:5:ILE:HG13	1:A:5:ILE:H	8	0.13
(1,39)	1:A:4:CYS:HB2	1:A:4:CYS:H	14	0.13
(1,31)	1:A:3:DVA:HG11	1:A:11:CYS:HB3	17	0.13
(1,31)	1:A:3:DVA:HG12	1:A:11:CYS:HB3	17	0.13
(1,31)	1:A:3:DVA:HG13	1:A:11:CYS:HB3	17	0.13
(1,3)	1:A:4:CYS:HA	1:A:5:ILE:H	20	0.13
(1,2)	1:A:3:DVA:HA	1:A:4:CYS:H	16	0.13
(1,13)	1:A:11:CYS:HA	1:A:12:DGL:H	2	0.13
(1,13)	1:A:11:CYS:HA	1:A:12:DGL:H	16	0.13
(1,12)	1:A:10:VAL:HG11	1:A:10:VAL:HA	6	0.13
(1,12)	1:A:10:VAL:HG12	1:A:10:VAL:HA	6	0.13
(1,12)	1:A:10:VAL:HG13	1:A:10:VAL:HA	6	0.13

Continued on next page...

Continued from previous page...

Key	Atom-1	Atom-2	Model ID	Violation (Å)
(1,12)	1:A:10:VAL:HG21	1:A:10:VAL:HA	6	0.13
(1,12)	1:A:10:VAL:HG22	1:A:10:VAL:HA	6	0.13
(1,12)	1:A:10:VAL:HG23	1:A:10:VAL:HA	6	0.13
(1,74)	1:A:9:DLY:HE3	1:A:9:DLY:HA	2	0.12
(1,60)	1:A:7:DPR:HA	1:A:7:DPR:HB2	10	0.12
(1,6)	1:A:6:PRO:HA	1:A:7:DPR:HD2	9	0.12
(1,6)	1:A:6:PRO:HA	1:A:7:DPR:HD2	11	0.12
(1,45)	1:A:5:ILE:HG12	1:A:5:ILE:H	12	0.12
(1,45)	1:A:5:ILE:HG13	1:A:5:ILE:H	12	0.12
(1,44)	1:A:5:ILE:HG12	1:A:5:ILE:H	12	0.12
(1,44)	1:A:5:ILE:HG13	1:A:5:ILE:H	12	0.12
(1,2)	1:A:3:DVA:HA	1:A:4:CYS:H	1	0.12
(1,12)	1:A:10:VAL:HG11	1:A:10:VAL:HA	13	0.12
(1,12)	1:A:10:VAL:HG12	1:A:10:VAL:HA	13	0.12
(1,12)	1:A:10:VAL:HG13	1:A:10:VAL:HA	13	0.12
(1,12)	1:A:10:VAL:HG21	1:A:10:VAL:HA	13	0.12
(1,12)	1:A:10:VAL:HG22	1:A:10:VAL:HA	13	0.12
(1,12)	1:A:10:VAL:HG23	1:A:10:VAL:HA	13	0.12
(1,93)	1:A:11:CYS:HB2	1:A:11:CYS:H	3	0.11
(1,92)	1:A:11:CYS:HB3	1:A:12:DGL:H	1	0.11
(1,85)	1:A:10:VAL:HG11	1:A:12:DGL:HG3	11	0.11
(1,85)	1:A:10:VAL:HG12	1:A:12:DGL:HG3	11	0.11
(1,85)	1:A:10:VAL:HG13	1:A:12:DGL:HG3	11	0.11
(1,85)	1:A:10:VAL:HG21	1:A:12:DGL:HG3	11	0.11
(1,85)	1:A:10:VAL:HG22	1:A:12:DGL:HG3	11	0.11
(1,85)	1:A:10:VAL:HG23	1:A:12:DGL:HG3	11	0.11
(1,64)	1:A:7:DPR:HD3	1:A:7:DPR:HB3	19	0.11
(1,60)	1:A:7:DPR:HA	1:A:7:DPR:HB2	5	0.11
(1,6)	1:A:6:PRO:HA	1:A:7:DPR:HD2	4	0.11
(1,13)	1:A:11:CYS:HA	1:A:12:DGL:H	19	0.11
(1,11)	1:A:10:VAL:HA	1:A:11:CYS:H	2	0.11

10 Dihedral-angle violation analysis

No dihedral-angle restraints found