



Full wwPDB X-ray Structure Validation Report ⓘ

Sep 25, 2023 – 03:57 PM EDT

PDB ID : 6AOT
Title : Crystal structure of the A/Brisbane/10/2007 (H3N2) influenza virus hemagglutinin L194P mutant in complex with 6²-SLNLN
Authors : Wu, N.C.; Wilson, I.A.
Deposited on : 2017-08-16
Resolution : 1.95 Å(reported)

This is a Full wwPDB X-ray Structure Validation Report for a publicly released PDB entry.

We welcome your comments at validation@mail.wwpdb.org

A user guide is available at

<https://www.wwpdb.org/validation/2017/XrayValidationReportHelp>

with specific help available everywhere you see the ⓘ symbol.

The types of validation reports are described at

<http://www.wwpdb.org/validation/2017/FAQs#types>.

The following versions of software and data (see [references ⓘ](#)) were used in the production of this report:

MolProbity : 4.02b-467
Mogul : 1.8.5 (274361), CSD as541be (2020)
Xtriage (Phenix) : 1.13
EDS : 2.35.1
Percentile statistics : 20191225.v01 (using entries in the PDB archive December 25th 2019)
Refmac : 5.8.0158
CCP4 : 7.0.044 (Gargrove)
Ideal geometry (proteins) : Engh & Huber (2001)
Ideal geometry (DNA, RNA) : Parkinson et al. (1996)
Validation Pipeline (wwPDB-VP) : 2.35.1

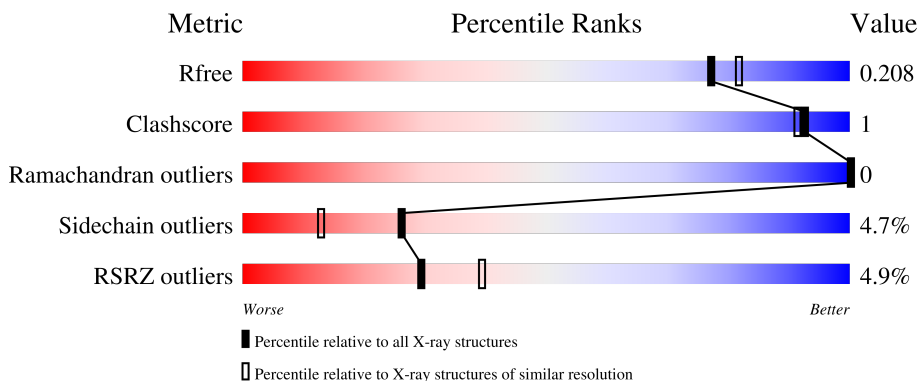
1 Overall quality at a glance

The following experimental techniques were used to determine the structure:

X-RAY DIFFRACTION

The reported resolution of this entry is 1.95 Å.

Percentile scores (ranging between 0-100) for global validation metrics of the entry are shown in the following graphic. The table shows the number of entries on which the scores are based.



Metric	Whole archive (#Entries)	Similar resolution (#Entries, resolution range(Å))
R_{free}	130704	2580 (1.96-1.96)
Clashscore	141614	2705 (1.96-1.96)
Ramachandran outliers	138981	2678 (1.96-1.96)
Sidechain outliers	138945	2678 (1.96-1.96)
RSRZ outliers	127900	2539 (1.96-1.96)

The table below summarises the geometric issues observed across the polymeric chains and their fit to the electron density. The red, orange, yellow and green segments of the lower bar indicate the fraction of residues that contain outliers for ≥ 3 , 2, 1 and 0 types of geometric quality criteria respectively. A grey segment represents the fraction of residues that are not modelled. The numeric value for each fraction is indicated below the corresponding segment, with a dot representing fractions $\leq 5\%$. The upper red bar (where present) indicates the fraction of residues that have poor fit to the electron density. The numeric value is given above the bar.

Mol	Chain	Length	Quality of chain
1	A	323	 7% 90% 8%
2	B	174	 2% 95%
3	C	5	 20% 80%
4	D	2	 50% 50%
5	E	2	 100%

The following table lists non-polymeric compounds, carbohydrate monomers and non-standard residues in protein, DNA, RNA chains that are outliers for geometric or electron-density-fit criteria:

Mol	Type	Chain	Res	Chirality	Geometry	Clashes	Electron density
6	NAG	A	401	-	-	-	X

2 Entry composition i

There are 7 unique types of molecules in this entry. The entry contains 4433 atoms, of which 0 are hydrogens and 0 are deuteriums.

In the tables below, the ZeroOcc column contains the number of atoms modelled with zero occupancy, the AltConf column contains the number of residues with at least one atom in alternate conformation and the Trace column contains the number of residues modelled with at most 2 atoms.

- Molecule 1 is a protein called Hemagglutinin HA1 chain.

Mol	Chain	Residues	Atoms					ZeroOcc	AltConf	Trace
			Total	C	N	O	S			
1	A	317	2486	1559	442	473	12	0	3	0

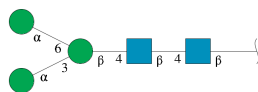
There are 4 discrepancies between the modelled and reference sequences:

Chain	Residue	Modelled	Actual	Comment	Reference
A	7	ALA	-	expression tag	UNP A8W891
A	8	ASN	-	expression tag	UNP A8W891
A	9	PRO	-	expression tag	UNP A8W891
A	10	GLY	-	expression tag	UNP A8W891

- Molecule 2 is a protein called Hemagglutinin HA2 chain.

Mol	Chain	Residues	Atoms					ZeroOcc	AltConf	Trace
			Total	C	N	O	S			
2	B	173	1416	887	244	279	6	0	5	0

- Molecule 3 is an oligosaccharide called alpha-D-mannopyranose-(1-3)-[alpha-D-mannopyranose-(1-6)]beta-D-mannopyranose-(1-4)-2-acetamido-2-deoxy-beta-D-glucopyranose-(1-4)-2-acetamido-2-deoxy-beta-D-glucopyranose.



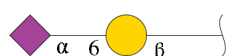
Mol	Chain	Residues	Atoms				ZeroOcc	AltConf	Trace
			Total	C	N	O			
3	C	5	61	34	2	25	0	0	0

- Molecule 4 is an oligosaccharide called 2-acetamido-2-deoxy-beta-D-glucopyranose-(1-4)-2-acetamido-2-deoxy-beta-D-glucopyranose.



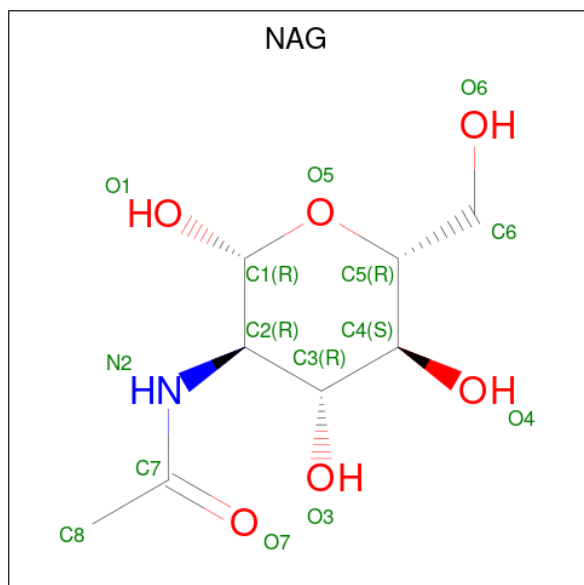
Mol	Chain	Residues	Atoms				ZeroOcc	AltConf	Trace
			Total	C	N	O			
4	D	2	28	16	2	10	0	0	0

- Molecule 5 is an oligosaccharide called N-acetyl-alpha-neuraminic acid-(2-6)-beta-D-galactopyranose.



Mol	Chain	Residues	Atoms				ZeroOcc	AltConf	Trace
			Total	C	N	O			
5	E	2	32	17	1	14	0	0	0

- Molecule 6 is 2-acetamido-2-deoxy-beta-D-glucopyranose (three-letter code: NAG) (formula: C₈H₁₅NO₆).



Mol	Chain	Residues	Atoms				ZeroOcc	AltConf
			Total	C	N	O		
6	A	1	14	8	1	5	0	0
6	A	1	14	8	1	5	0	0

Continued on next page...

Continued from previous page...

Mol	Chain	Residues	Atoms				ZeroOcc	AltConf
6	A	1	Total	C	N	O	0	0
			14	8	1	5		
6	A	1	Total	C	N	O	0	0
			14	8	1	5		
6	A	1	Total	C	N	O	0	0
			14	8	1	5		
6	B	1	Total	C	N	O	0	0
			14	8	1	5		

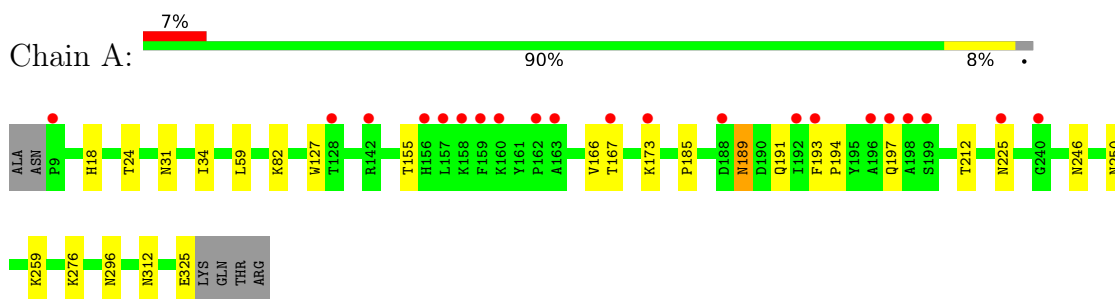
- Molecule 7 is water.

Mol	Chain	Residues	Atoms		ZeroOcc	AltConf
7	A	179	Total	O	0	0
			179	179		
7	B	147	Total	O	0	0
			147	147		

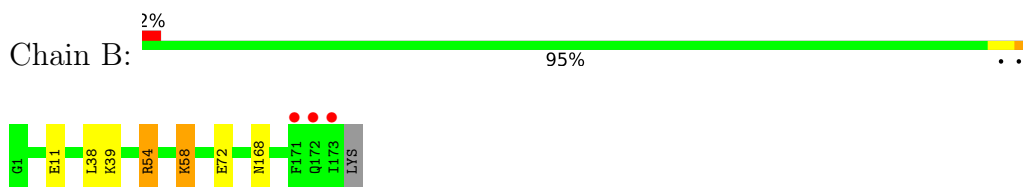
3 Residue-property plots [i](#)

These plots are drawn for all protein, RNA, DNA and oligosaccharide chains in the entry. The first graphic for a chain summarises the proportions of the various outlier classes displayed in the second graphic. The second graphic shows the sequence view annotated by issues in geometry and electron density. Residues are color-coded according to the number of geometric quality criteria for which they contain at least one outlier: green = 0, yellow = 1, orange = 2 and red = 3 or more. A red dot above a residue indicates a poor fit to the electron density ($RSRZ > 2$). Stretches of 2 or more consecutive residues without any outlier are shown as a green connector. Residues present in the sample, but not in the model, are shown in grey.

- Molecule 1: Hemagglutinin HA1 chain



- Molecule 2: Hemagglutinin HA2 chain



- Molecule 3: alpha-D-mannopyranose-(1-3)-[alpha-D-mannopyranose-(1-6)]beta-D-mannopyranose-(1-4)-2-acetamido-2-deoxy-beta-D-glucopyranose-(1-4)-2-acetamido-2-deoxy-beta-D-glucopyranose



- Molecule 4: 2-acetamido-2-deoxy-beta-D-glucopyranose-(1-4)-2-acetamido-2-deoxy-beta-D-glucopyranose



- Molecule 5: N-acetyl-alpha-neuraminic acid-(2-6)-beta-D-galactopyranose



GALI
SLA2

4 Data and refinement statistics

Property	Value	Source
Space group	H 3 2	Depositor
Cell constants a, b, c, α , β , γ	100.34Å 100.34Å 384.34Å 90.00° 90.00° 120.00°	Depositor
Resolution (Å)	50.00 – 1.95 42.38 – 1.95	Depositor EDS
% Data completeness (in resolution range)	99.5 (50.00-1.95) 99.6 (42.38-1.95)	Depositor EDS
R_{merge}	(Not available)	Depositor
R_{sym}	0.09	Depositor
$\langle I/\sigma(I) \rangle$ ¹	2.67 (at 1.95Å)	Xtrriage
Refinement program	REFMAC 5.8.0158	Depositor
R, R_{free}	0.183 , 0.203 0.191 , 0.208	Depositor DCC
R_{free} test set	2651 reflections (4.81%)	wwPDB-VP
Wilson B-factor (Å ²)	30.7	Xtrriage
Anisotropy	0.156	Xtrriage
Bulk solvent k_{sol} (e/Å ³), B_{sol} (Å ²)	0.38 , 58.8	EDS
L-test for twinning ²	$\langle L \rangle = 0.49$, $\langle L^2 \rangle = 0.33$	Xtrriage
Estimated twinning fraction	No twinning to report.	Xtrriage
F_o, F_c correlation	0.96	EDS
Total number of atoms	4433	wwPDB-VP
Average B, all atoms (Å ²)	42.0	wwPDB-VP

Xtrriage's analysis on translational NCS is as follows: *The largest off-origin peak in the Patterson function is 4.92% of the height of the origin peak. No significant pseudotranslation is detected.*

¹Intensities estimated from amplitudes.

²Theoretical values of $\langle |L| \rangle$, $\langle L^2 \rangle$ for acentric reflections are 0.5, 0.333 respectively for untwinned datasets, and 0.375, 0.2 for perfectly twinned datasets.

5 Model quality

5.1 Standard geometry

Bond lengths and bond angles in the following residue types are not validated in this section: GAL, BMA, NAG, SIA, MAN

The Z score for a bond length (or angle) is the number of standard deviations the observed value is removed from the expected value. A bond length (or angle) with $|Z| > 5$ is considered an outlier worth inspection. RMSZ is the root-mean-square of all Z scores of the bond lengths (or angles).

Mol	Chain	Bond lengths		Bond angles	
		RMSZ	# Z >5	RMSZ	# Z >5
1	A	0.58	0/2553	0.74	0/3473
2	B	0.63	0/1455	0.73	0/1955
All	All	0.60	0/4008	0.74	0/5428

There are no bond length outliers.

There are no bond angle outliers.

There are no chirality outliers.

There are no planarity outliers.

5.2 Too-close contacts

In the following table, the Non-H and H(model) columns list the number of non-hydrogen atoms and hydrogen atoms in the chain respectively. The H(added) column lists the number of hydrogen atoms added and optimized by MolProbity. The Clashes column lists the number of clashes within the asymmetric unit, whereas Symm-Clashes lists symmetry-related clashes.

Mol	Chain	Non-H	H(model)	H(added)	Clashes	Symm-Clashes
1	A	2486	0	2441	10	0
2	B	1416	0	1362	2	0
3	C	61	0	52	0	0
4	D	28	0	25	0	0
5	E	32	0	28	2	0
6	A	70	0	65	0	0
6	B	14	0	13	0	0
7	A	179	0	0	0	0
7	B	147	0	0	2	2
All	All	4433	0	3986	12	2

The all-atom clashscore is defined as the number of clashes found per 1000 atoms (including

hydrogen atoms). The all-atom clashscore for this structure is 1.

All (12) close contacts within the same asymmetric unit are listed below, sorted by their clash magnitude.

Atom-1	Atom-2	Interatomic distance (Å)	Clash overlap (Å)
1:A:191:GLN:HE22	1:A:250:ASN:HD21	1.24	0.85
2:B:54:ARG:HD2	7:B:411:HOH:O	1.94	0.65
1:A:185:PRO:HG2	1:A:191:GLN:HE21	1.69	0.58
1:A:191:GLN:NE2	1:A:250:ASN:HD21	2.00	0.57
1:A:189:ASN:N	1:A:189:ASN:OD1	2.44	0.51
1:A:155:THR:HG21	5:E:2:SIA:H111	1.93	0.49
1:A:127:TRP:CZ3	1:A:166:VAL:HG21	2.47	0.49
1:A:59:LEU:HD13	1:A:82:LYS:HE2	1.96	0.47
1:A:193:PHE:HB3	1:A:194:PRO:HD3	2.00	0.43
2:B:58:LYS:NZ	7:B:301:HOH:O	2.40	0.43
1:A:31:ASN:HB3	1:A:34[B]:ILE:HG12	2.01	0.42
1:A:225:ASN:ND2	5:E:1:GAL:O2	2.53	0.42

All (2) symmetry-related close contacts are listed below. The label for Atom-2 includes the symmetry operator and encoded unit-cell translations to be applied.

Atom-1	Atom-2	Interatomic distance (Å)	Clash overlap (Å)
7:B:416:HOH:O	7:B:416:HOH:O[5_555]	1.64	0.56
7:B:444:HOH:O	7:B:444:HOH:O[2_565]	1.73	0.47

5.3 Torsion angles [i](#)

5.3.1 Protein backbone [i](#)

In the following table, the Percentiles column shows the percent Ramachandran outliers of the chain as a percentile score with respect to all X-ray entries followed by that with respect to entries of similar resolution.

The Analysed column shows the number of residues for which the backbone conformation was analysed, and the total number of residues.

Mol	Chain	Analysed	Favoured	Allowed	Outliers	Percentiles	
1	A	318/323 (98%)	308 (97%)	10 (3%)	0	100	100
2	B	176/174 (101%)	167 (95%)	9 (5%)	0	100	100
All	All	494/497 (99%)	475 (96%)	19 (4%)	0	100	100

There are no Ramachandran outliers to report.

5.3.2 Protein sidechains [i](#)

In the following table, the Percentiles column shows the percent sidechain outliers of the chain as a percentile score with respect to all X-ray entries followed by that with respect to entries of similar resolution.

The Analysed column shows the number of residues for which the sidechain conformation was analysed, and the total number of residues.

Mol	Chain	Analysed	Rotameric	Outliers	Percentiles	
1	A	283/285 (99%)	269 (95%)	14 (5%)	25	12
2	B	151/147 (103%)	144 (95%)	7 (5%)	27	14
All	All	434/432 (100%)	413 (95%)	21 (5%)	26	12

All (21) residues with a non-rotameric sidechain are listed below:

Mol	Chain	Res	Type
1	A	18	HIS
1	A	24	THR
1	A	167	THR
1	A	173	LYS
1	A	189	ASN
1	A	197	GLN
1	A	212	THR
1	A	246	ASN
1	A	259	LYS
1	A	276	LYS
1	A	296[A]	ASN
1	A	296[B]	ASN
1	A	312	ASN
1	A	325	GLU
2	B	11	GLU
2	B	38	LEU
2	B	39	LYS
2	B	54	ARG
2	B	58	LYS
2	B	72	GLU
2	B	168	ASN

Sometimes sidechains can be flipped to improve hydrogen bonding and reduce clashes. All (3) such sidechains are listed below:

Mol	Chain	Res	Type
1	A	191	GLN
1	A	225	ASN
1	A	312	ASN

5.3.3 RNA [i](#)

There are no RNA molecules in this entry.

5.4 Non-standard residues in protein, DNA, RNA chains [i](#)

There are no non-standard protein/DNA/RNA residues in this entry.

5.5 Carbohydrates [i](#)

9 monosaccharides are modelled in this entry.

In the following table, the Counts columns list the number of bonds (or angles) for which Mogul statistics could be retrieved, the number of bonds (or angles) that are observed in the model and the number of bonds (or angles) that are defined in the Chemical Component Dictionary. The Link column lists molecule types, if any, to which the group is linked. The Z score for a bond length (or angle) is the number of standard deviations the observed value is removed from the expected value. A bond length (or angle) with $|Z| > 2$ is considered an outlier worth inspection. RMSZ is the root-mean-square of all Z scores of the bond lengths (or angles).

Mol	Type	Chain	Res	Link	Bond lengths			Bond angles		
					Counts	RMSZ	# Z > 2	Counts	RMSZ	# Z > 2
3	NAG	C	1	1,3	14,14,15	0.49	0	17,19,21	1.51	3 (17%)
3	NAG	C	2	3	14,14,15	0.32	0	17,19,21	0.74	0
3	BMA	C	3	3	11,11,12	0.29	0	15,15,17	1.04	1 (6%)
3	MAN	C	4	3	11,11,12	0.37	0	15,15,17	1.17	1 (6%)
3	MAN	C	5	3	11,11,12	0.50	0	15,15,17	1.08	1 (6%)
4	NAG	D	1	1,4	14,14,15	0.32	0	17,19,21	1.43	2 (11%)
4	NAG	D	2	4	14,14,15	0.32	0	17,19,21	0.66	0
5	GAL	E	1	5	12,12,12	0.57	0	17,17,17	0.92	1 (5%)
5	SIA	E	2	5	20,20,21	0.61	0	24,28,31	1.09	2 (8%)

In the following table, the Chirals column lists the number of chiral outliers, the number of chiral centers analysed, the number of these observed in the model and the number defined in the Chemical Component Dictionary. Similar counts are reported in the Torsion and Rings columns. '-' means no outliers of that kind were identified.

Mol	Type	Chain	Res	Link	Chirals	Torsions	Rings
3	NAG	C	1	1,3	-	0/6/23/26	0/1/1/1
3	NAG	C	2	3	-	0/6/23/26	0/1/1/1
3	BMA	C	3	3	-	0/2/19/22	0/1/1/1
3	MAN	C	4	3	-	0/2/19/22	0/1/1/1
3	MAN	C	5	3	-	2/2/19/22	0/1/1/1
4	NAG	D	1	1,4	-	0/6/23/26	0/1/1/1
4	NAG	D	2	4	-	0/6/23/26	0/1/1/1
5	GAL	E	1	5	-	0/2/22/22	0/1/1/1
5	SIA	E	2	5	-	0/18/34/38	0/1/1/1

There are no bond length outliers.

All (11) bond angle outliers are listed below:

Mol	Chain	Res	Type	Atoms	Z	Observed(°)	Ideal(°)
3	C	1	NAG	C1-O5-C5	4.47	118.25	112.19
4	D	1	NAG	C1-O5-C5	4.20	117.88	112.19
3	C	5	MAN	C1-O5-C5	3.33	116.70	112.19
3	C	4	MAN	C3-C4-C5	3.26	116.05	110.24
5	E	2	SIA	C6-O6-C2	2.66	117.03	111.34
3	C	3	BMA	O3-C3-C2	-2.60	105.02	109.99
4	D	1	NAG	C2-N2-C7	2.39	126.31	122.90
3	C	1	NAG	C3-C4-C5	2.28	114.31	110.24
3	C	1	NAG	O5-C5-C6	2.19	110.64	107.20
5	E	2	SIA	O1B-C1-C2	2.11	119.04	113.03
5	E	1	GAL	C1-C2-C3	2.06	114.58	110.31

There are no chirality outliers.

All (2) torsion outliers are listed below:

Mol	Chain	Res	Type	Atoms
3	C	5	MAN	C4-C5-C6-O6
3	C	5	MAN	O5-C5-C6-O6

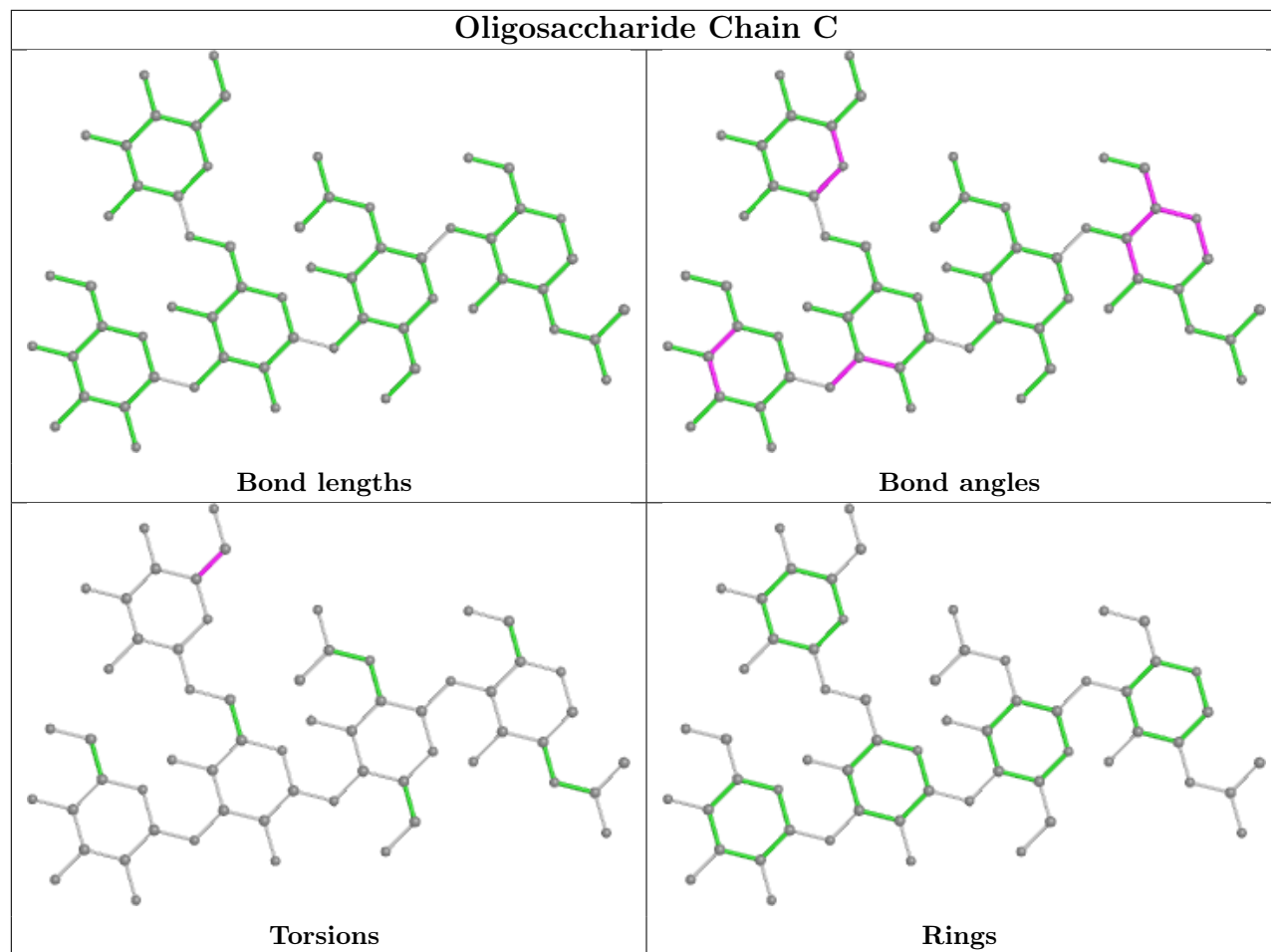
There are no ring outliers.

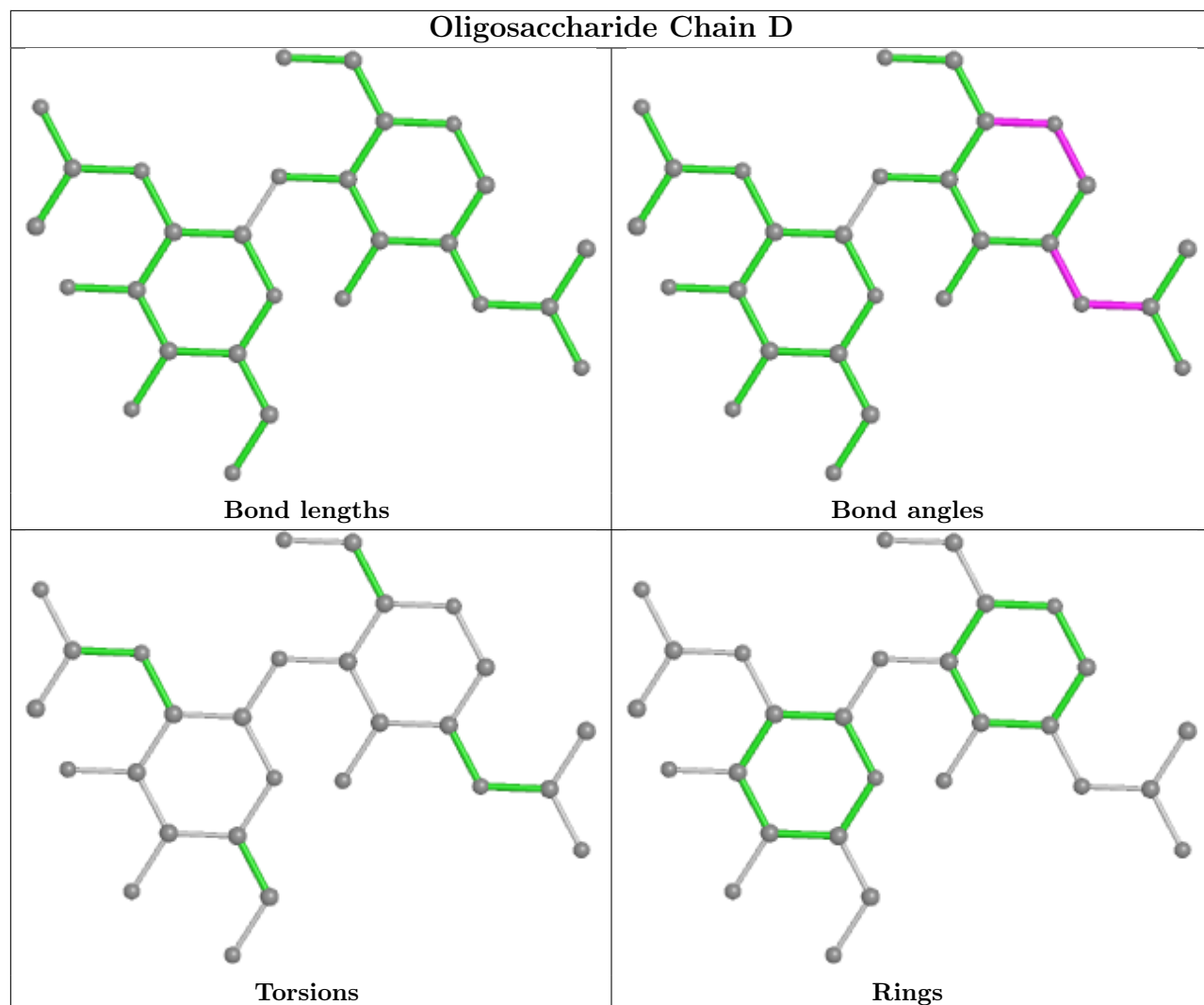
2 monomers are involved in 2 short contacts:

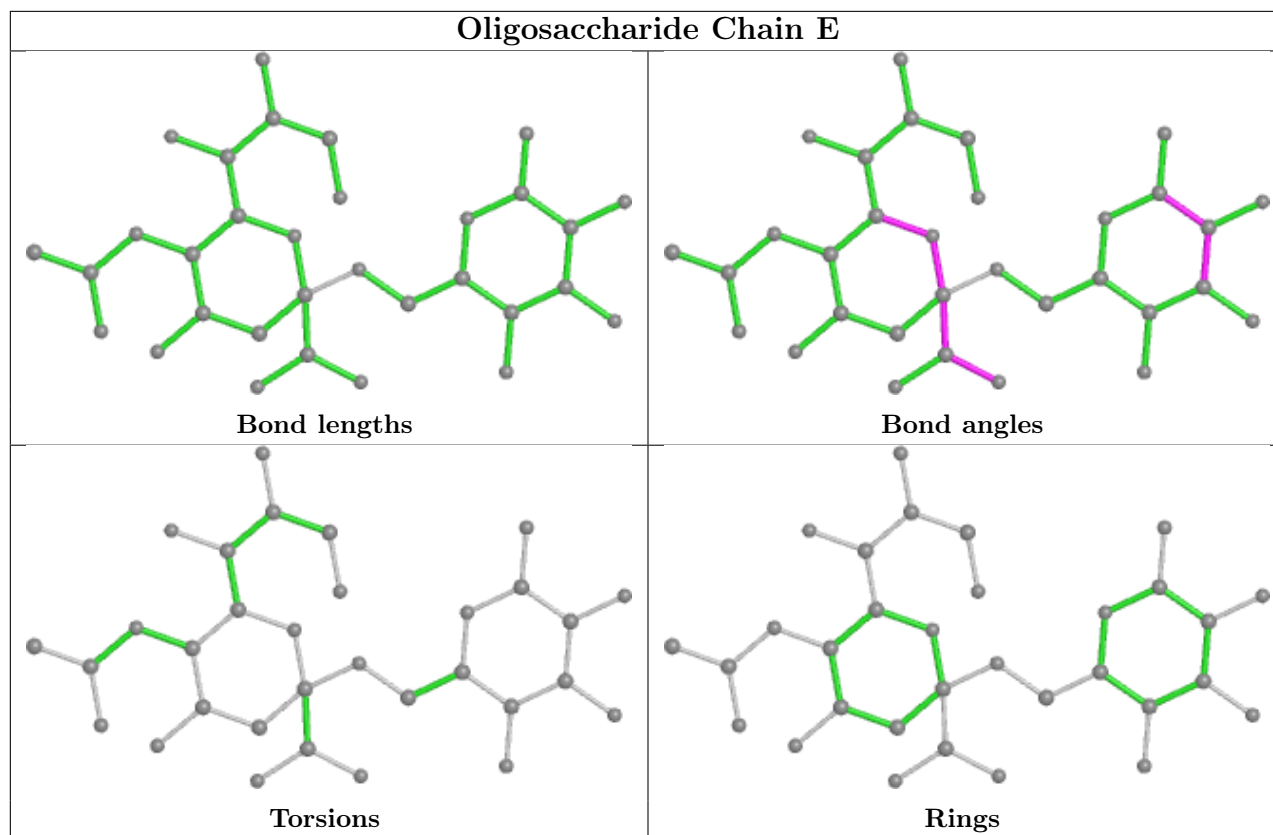
Mol	Chain	Res	Type	Clashes	Symm-Clashes
5	E	2	SIA	1	0
5	E	1	GAL	1	0

The following is a two-dimensional graphical depiction of Mogul quality analysis of bond lengths,

bond angles, torsion angles, and ring geometry for oligosaccharide.







5.6 Ligand geometry [i](#)

6 ligands are modelled in this entry.

In the following table, the Counts columns list the number of bonds (or angles) for which Mogul statistics could be retrieved, the number of bonds (or angles) that are observed in the model and the number of bonds (or angles) that are defined in the Chemical Component Dictionary. The Link column lists molecule types, if any, to which the group is linked. The Z score for a bond length (or angle) is the number of standard deviations the observed value is removed from the expected value. A bond length (or angle) with $|Z| > 2$ is considered an outlier worth inspection. RMSZ is the root-mean-square of all Z scores of the bond lengths (or angles).

Mol	Type	Chain	Res	Link	Bond lengths			Bond angles		
					Counts	RMSZ	$\# Z > 2$	Counts	RMSZ	$\# Z > 2$
6	NAG	A	411	1	14,14,15	0.59	0	17,19,21	1.33	4 (23%)
6	NAG	A	407	1	14,14,15	0.36	0	17,19,21	0.78	0
6	NAG	A	401	1	14,14,15	0.69	0	17,19,21	1.04	1 (5%)
6	NAG	A	410	1	14,14,15	0.79	0	17,19,21	1.43	3 (17%)
6	NAG	B	201	2	14,14,15	0.53	0	17,19,21	1.28	2 (11%)
6	NAG	A	412	1	14,14,15	0.37	0	17,19,21	0.87	1 (5%)

In the following table, the Chirals column lists the number of chiral outliers, the number of chiral

centers analysed, the number of these observed in the model and the number defined in the Chemical Component Dictionary. Similar counts are reported in the Torsion and Rings columns. '-' means no outliers of that kind were identified.

Mol	Type	Chain	Res	Link	Chirals	Torsions	Rings
6	NAG	A	411	1	-	0/6/23/26	0/1/1/1
6	NAG	A	407	1	-	0/6/23/26	0/1/1/1
6	NAG	A	401	1	-	0/6/23/26	0/1/1/1
6	NAG	A	410	1	-	2/6/23/26	0/1/1/1
6	NAG	B	201	2	-	2/6/23/26	0/1/1/1
6	NAG	A	412	1	-	0/6/23/26	0/1/1/1

There are no bond length outliers.

All (11) bond angle outliers are listed below:

Mol	Chain	Res	Type	Atoms	Z	Observed(°)	Ideal(°)
6	B	201	NAG	C1-O5-C5	3.57	117.02	112.19
6	A	401	NAG	C1-O5-C5	2.66	115.79	112.19
6	A	410	NAG	O5-C1-C2	2.59	115.38	111.29
6	A	411	NAG	C4-C3-C2	2.44	114.60	111.02
6	A	410	NAG	O7-C7-C8	-2.44	117.53	122.06
6	A	411	NAG	C1-O5-C5	2.36	115.38	112.19
6	A	411	NAG	C1-C2-N2	2.31	114.44	110.49
6	A	411	NAG	O5-C1-C2	-2.29	107.68	111.29
6	A	410	NAG	C1-C2-N2	2.24	114.31	110.49
6	B	201	NAG	C1-C2-N2	2.22	114.28	110.49
6	A	412	NAG	O5-C1-C2	-2.13	107.93	111.29

There are no chirality outliers.

All (4) torsion outliers are listed below:

Mol	Chain	Res	Type	Atoms
6	B	201	NAG	C4-C5-C6-O6
6	A	410	NAG	O5-C5-C6-O6
6	B	201	NAG	O5-C5-C6-O6
6	A	410	NAG	C4-C5-C6-O6

There are no ring outliers.

No monomer is involved in short contacts.

5.7 Other polymers [i](#)

There are no such residues in this entry.

5.8 Polymer linkage issues [i](#)

There are no chain breaks in this entry.

6 Fit of model and data

6.1 Protein, DNA and RNA chains

In the following table, the column labelled ‘#RSRZ > 2’ contains the number (and percentage) of RSRZ outliers, followed by percent RSRZ outliers for the chain as percentile scores relative to all X-ray entries and entries of similar resolution. The OWAB column contains the minimum, median, 95th percentile and maximum values of the occupancy-weighted average B-factor per residue. The column labelled ‘Q < 0.9’ lists the number of (and percentage) of residues with an average occupancy less than 0.9.

Mol	Chain	Analysed	<RSRZ>	#RSRZ>2	OWAB(Å ²)	Q<0.9
1	A	317/323 (98%)	0.37	21 (6%) 18 26	21, 41, 76, 101	0
2	B	173/174 (99%)	-0.00	3 (1%) 70 77	19, 32, 47, 77	0
All	All	490/497 (98%)	0.24	24 (4%) 29 39	19, 37, 70, 101	0

All (24) RSRZ outliers are listed below:

Mol	Chain	Res	Type	RSRZ
1	A	198	ALA	8.7
1	A	159	PHE	7.0
1	A	193	PHE	6.8
1	A	196	ALA	5.8
1	A	157	LEU	5.3
1	A	197	GLN	5.1
1	A	158	LYS	5.0
1	A	156	HIS	4.5
1	A	160	LYS	3.7
1	A	192	ILE	3.4
1	A	225	ASN	3.3
1	A	142	ARG	3.1
2	B	172	GLN	3.1
1	A	199	SER	2.8
1	A	188	ASP	2.6
1	A	173	LYS	2.5
1	A	240	GLY	2.5
1	A	128	THR	2.5
1	A	9	PRO	2.3
1	A	163	ALA	2.3
1	A	162	PRO	2.2
1	A	167	THR	2.2
2	B	171	PHE	2.1
2	B	173	ILE	2.1

6.2 Non-standard residues in protein, DNA, RNA chains [i](#)

There are no non-standard protein/DNA/RNA residues in this entry.

6.3 Carbohydrates [i](#)

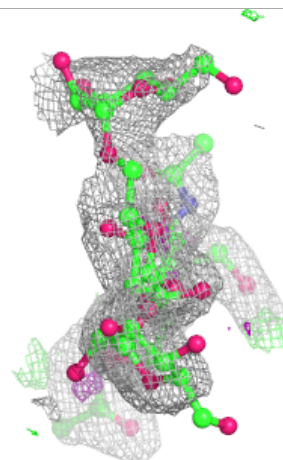
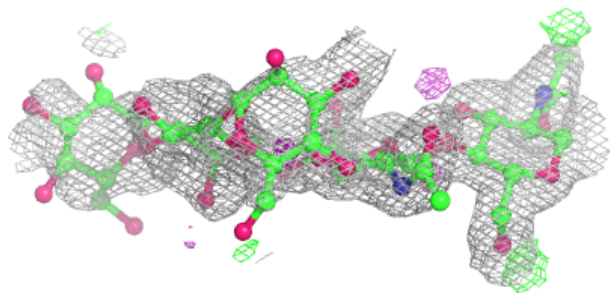
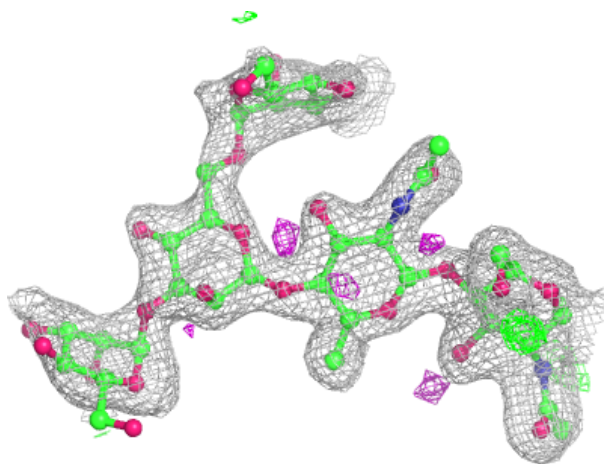
In the following table, the Atoms column lists the number of modelled atoms in the group and the number defined in the chemical component dictionary. The B-factors column lists the minimum, median, 95th percentile and maximum values of B factors of atoms in the group. The column labelled 'Q< 0.9' lists the number of atoms with occupancy less than 0.9.

Mol	Type	Chain	Res	Atoms	RSCC	RSR	B-factors(Å ²)	Q<0.9
3	MAN	C	4	11/12	0.77	0.25	94,97,101,101	0
4	NAG	D	2	14/15	0.80	0.27	58,64,68,68	0
3	MAN	C	5	11/12	0.82	0.20	87,93,95,95	0
3	BMA	C	3	11/12	0.83	0.19	77,83,91,91	0
5	GAL	E	1	12/12	0.84	0.26	71,85,90,90	0
3	NAG	C	2	14/15	0.86	0.24	56,59,63,70	0
3	NAG	C	1	14/15	0.89	0.14	40,46,47,52	0
4	NAG	D	1	14/15	0.89	0.21	57,63,71,74	0
5	SIA	E	2	20/21	0.92	0.20	53,58,64,65	0

The following is a graphical depiction of the model fit to experimental electron density for oligosaccharide. Each fit is shown from different orientation to approximate a three-dimensional view.

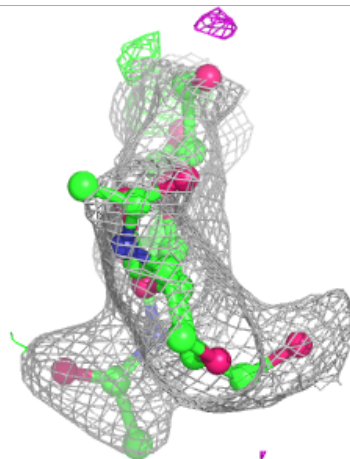
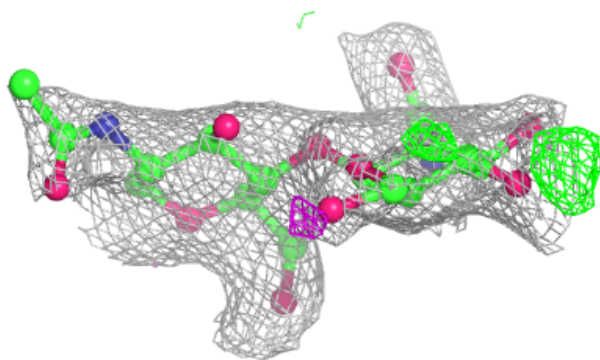
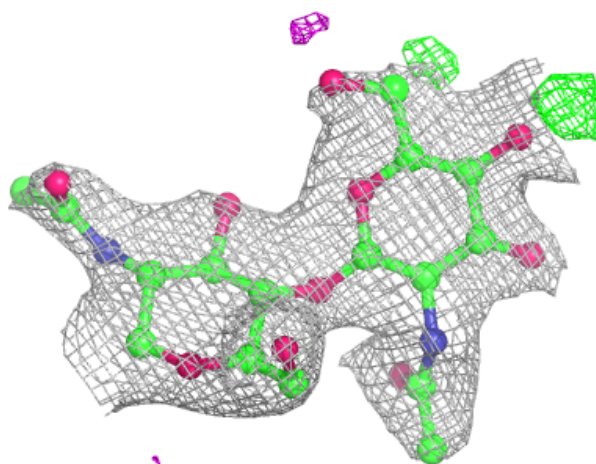
Electron density around Chain C:

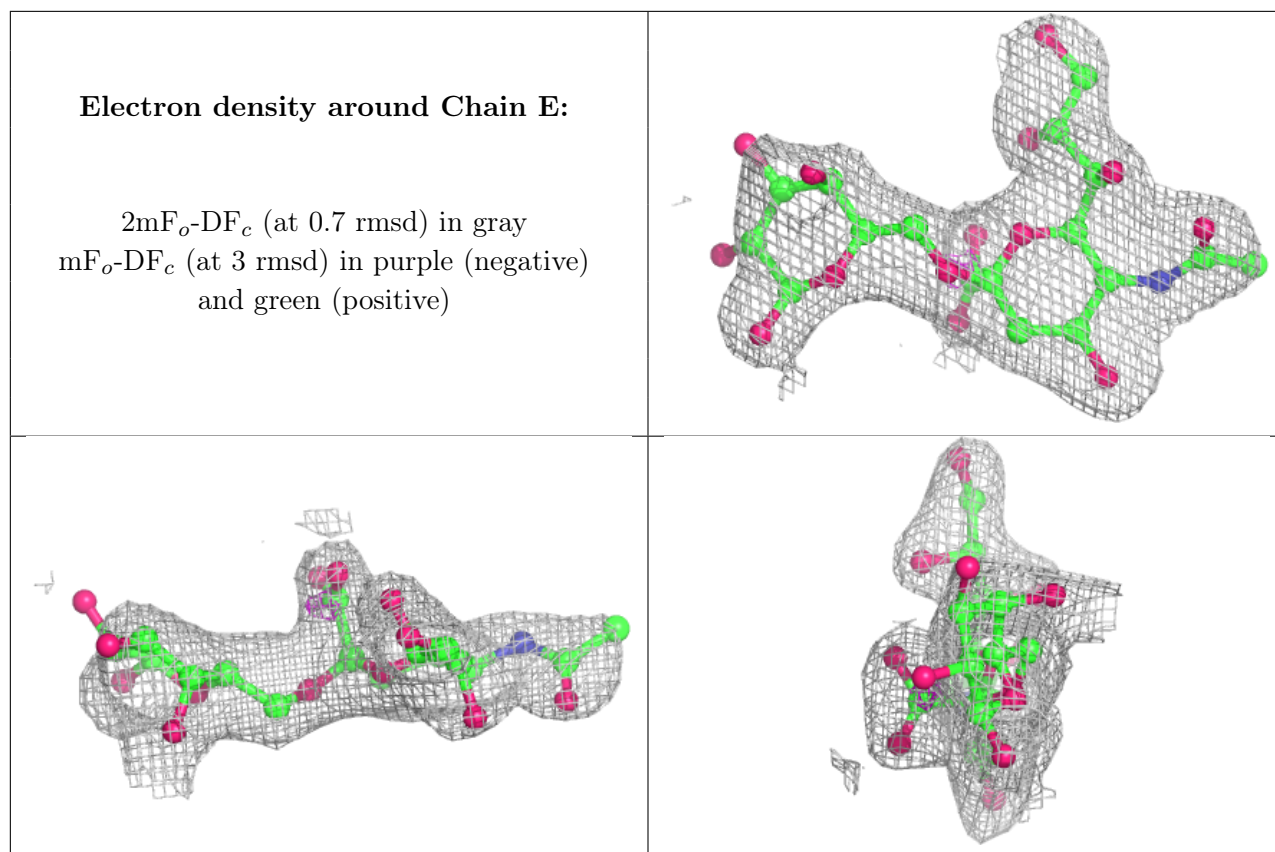
$2mF_o-DF_c$ (at 0.7 rmsd) in gray
 mF_o-DF_c (at 3 rmsd) in purple (negative)
and green (positive)



Electron density around Chain D:

$2mF_o-DF_c$ (at 0.7 rmsd) in gray
 mF_o-DF_c (at 3 rmsd) in purple (negative)
and green (positive)





6.4 Ligands [i](#)

In the following table, the Atoms column lists the number of modelled atoms in the group and the number defined in the chemical component dictionary. The B-factors column lists the minimum, median, 95th percentile and maximum values of B factors of atoms in the group. The column labelled 'Q<0.9' lists the number of atoms with occupancy less than 0.9.

Mol	Type	Chain	Res	Atoms	RSCC	RSR	B-factors(Å ²)	Q<0.9
6	NAG	B	201	14/15	0.49	0.34	69,75,81,81	0
6	NAG	A	401	14/15	0.57	0.45	61,69,72,73	0
6	NAG	A	412	14/15	0.73	0.30	69,73,79,81	0
6	NAG	A	410	14/15	0.78	0.20	46,56,59,68	0
6	NAG	A	407	14/15	0.81	0.32	60,70,76,78	0
6	NAG	A	411	14/15	0.87	0.21	64,74,84,85	0

6.5 Other polymers [i](#)

There are no such residues in this entry.