



# Full wwPDB X-ray Structure Validation Report ⓘ

Oct 22, 2023 – 09:09 PM EDT

PDB ID : 3AFN  
Title : Crystal structure of aldose reductase A1-R complexed with NADP  
Authors : Takase, R.; Ochiai, A.; Mikami, B.; Hashimoto, W.; Murata, K.  
Deposited on : 2010-03-10  
Resolution : 1.63 Å(reported)

This is a Full wwPDB X-ray Structure Validation Report for a publicly released PDB entry.

We welcome your comments at [validation@mail.wwpdb.org](mailto:validation@mail.wwpdb.org)

A user guide is available at

<https://www.wwpdb.org/validation/2017/XrayValidationReportHelp>

with specific help available everywhere you see the ⓘ symbol.

The types of validation reports are described at

<http://www.wwpdb.org/validation/2017/FAQs#types>.

---

The following versions of software and data (see [references ⓘ](#)) were used in the production of this report:

MolProbity : 4.02b-467  
Mogul : 1.8.5 (274361), CSD as541be (2020)  
Xtriage (Phenix) : 1.13  
EDS : 2.36  
buster-report : 1.1.7 (2018)  
Percentile statistics : 20191225.v01 (using entries in the PDB archive December 25th 2019)  
Refmac : 5.8.0158  
CCP4 : 7.0.044 (Gargrove)  
Ideal geometry (proteins) : Engh & Huber (2001)  
Ideal geometry (DNA, RNA) : Parkinson et al. (1996)  
Validation Pipeline (wwPDB-VP) : 2.36

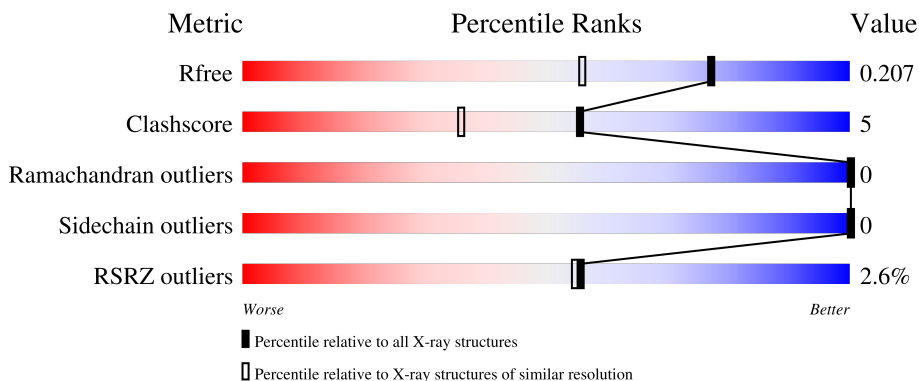
# 1 Overall quality at a glance i

The following experimental techniques were used to determine the structure:

*X-RAY DIFFRACTION*

The reported resolution of this entry is 1.63 Å.

Percentile scores (ranging between 0-100) for global validation metrics of the entry are shown in the following graphic. The table shows the number of entries on which the scores are based.



Metric	Whole archive (#Entries)	Similar resolution (#Entries, resolution range(Å))
$R_{free}$	130704	3122 (1.66-1.62)
Clashscore	141614	3268 (1.66-1.62)
Ramachandran outliers	138981	3215 (1.66-1.62)
Sidechain outliers	138945	3215 (1.66-1.62)
RSRZ outliers	127900	3079 (1.66-1.62)

The table below summarises the geometric issues observed across the polymeric chains and their fit to the electron density. The red, orange, yellow and green segments of the lower bar indicate the fraction of residues that contain outliers for  $\geq 3$ , 2, 1 and 0 types of geometric quality criteria respectively. A grey segment represents the fraction of residues that are not modelled. The numeric value for each fraction is indicated below the corresponding segment, with a dot representing fractions  $\leq 5\%$ . The upper red bar (where present) indicates the fraction of residues that have poor fit to the electron density. The numeric value is given above the bar.

Mol	Chain	Length	Quality of chain
1	A	258	95% (green), 5% (yellow)
1	B	258	2% (red), 95% (green), 5% (yellow)
1	C	258	5% (red), 94% (green), 6% (yellow)
1	D	258	3% (red), 94% (green), 5% (yellow)

The following table lists non-polymeric compounds, carbohydrate monomers and non-standard

residues in protein, DNA, RNA chains that are outliers for geometric or electron-density-fit criteria:

Mol	Type	Chain	Res	Chirality	Geometry	Clashes	Electron density
3	TBU	A	1001	-	-	X	-
3	TBU	B	1001	-	-	X	-
3	TBU	C	1001	-	-	X	-
3	TBU	D	1001	-	-	X	-

## 2 Entry composition [i](#)

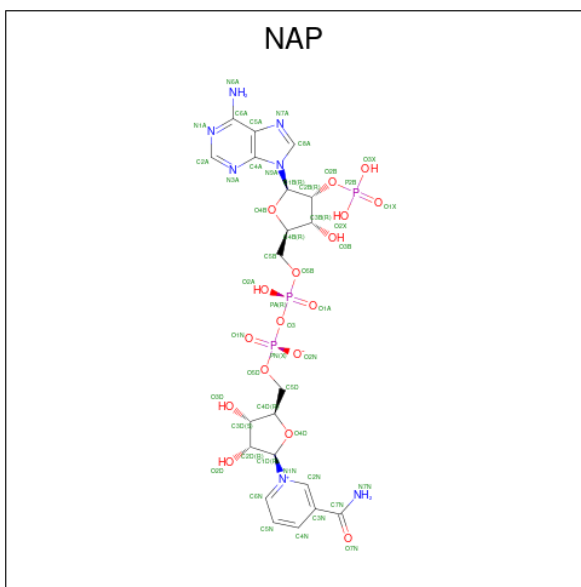
There are 4 unique types of molecules in this entry. The entry contains 8911 atoms, of which 0 are hydrogens and 0 are deuteriums.

In the tables below, the ZeroOcc column contains the number of atoms modelled with zero occupancy, the AltConf column contains the number of residues with at least one atom in alternate conformation and the Trace column contains the number of residues modelled with at most 2 atoms.

- Molecule 1 is a protein called Carbonyl reductase.

Mol	Chain	Residues	Atoms					ZeroOcc	AltConf	Trace
			Total	C	N	O	S			
1	B	257	Total	C	N	O	S	0	4	0
			1925	1213	345	361	6			
1	A	257	Total	C	N	O	S	0	6	0
			1944	1223	350	365	6			
1	C	257	Total	C	N	O	S	0	7	0
			1950	1230	351	363	6			
1	D	257	Total	C	N	O	S	0	7	0
			1953	1230	352	365	6			

- Molecule 2 is NADP NICOTINAMIDE-ADENINE-DINUCLEOTIDE PHOSPHATE (three-letter code: NAP) (formula: C<sub>21</sub>H<sub>28</sub>N<sub>7</sub>O<sub>17</sub>P<sub>3</sub>).



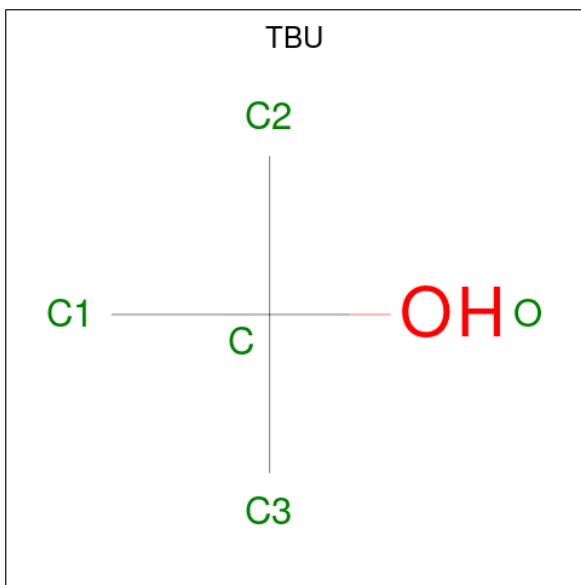
Mol	Chain	Residues	Atoms				ZeroOcc	AltConf	
			Total	C	N	O			P
2	B	1	Total	C	N	O	P	0	0
			48	21	7	17	3		
2	A	1	Total	C	N	O	P	0	0
			48	21	7	17	3		

*Continued on next page...*

Continued from previous page...

Mol	Chain	Residues	Atoms					ZeroOcc	AltConf
2	C	1	Total	C	N	O	P	0	0
			48	21	7	17	3		
2	D	1	Total	C	N	O	P	0	0
			48	21	7	17	3		

- Molecule 3 is TERTIARY-BUTYL ALCOHOL (three-letter code: TBU) (formula: C<sub>4</sub>H<sub>10</sub>O).



Mol	Chain	Residues	Atoms			ZeroOcc	AltConf
3	B	1	Total	C	O	0	0
			5	4	1		
3	A	1	Total	C	O	0	0
			5	4	1		
3	C	1	Total	C	O	0	0
			5	4	1		
3	D	1	Total	C	O	0	0
			5	4	1		

- Molecule 4 is water.

Mol	Chain	Residues	Atoms		ZeroOcc	AltConf
4	B	242	Total	O	0	0
			242	242		
4	A	229	Total	O	0	0
			229	229		
4	C	241	Total	O	0	0
			241	241		

Continued on next page...

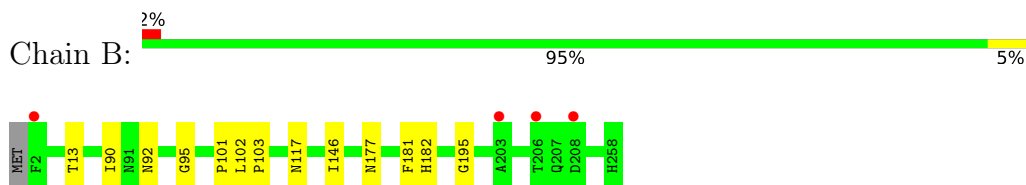
*Continued from previous page...*

<b>Mol</b>	<b>Chain</b>	<b>Residues</b>	<b>Atoms</b>		<b>ZeroOcc</b>	<b>AltConf</b>
4	D	215	Total 215	O 215	0	0

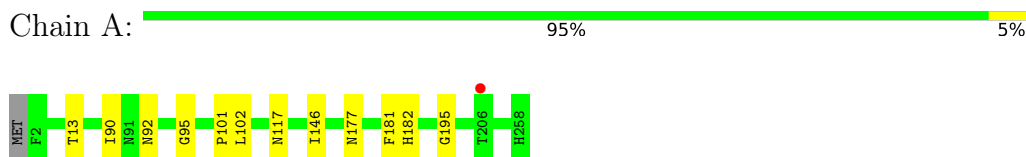
### 3 Residue-property plots [i](#)

These plots are drawn for all protein, RNA, DNA and oligosaccharide chains in the entry. The first graphic for a chain summarises the proportions of the various outlier classes displayed in the second graphic. The second graphic shows the sequence view annotated by issues in geometry and electron density. Residues are color-coded according to the number of geometric quality criteria for which they contain at least one outlier: green = 0, yellow = 1, orange = 2 and red = 3 or more. A red dot above a residue indicates a poor fit to the electron density ( $RSRZ > 2$ ). Stretches of 2 or more consecutive residues without any outlier are shown as a green connector. Residues present in the sample, but not in the model, are shown in grey.

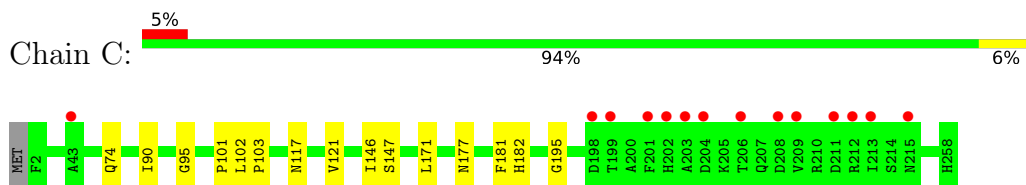
- Molecule 1: Carbonyl reductase



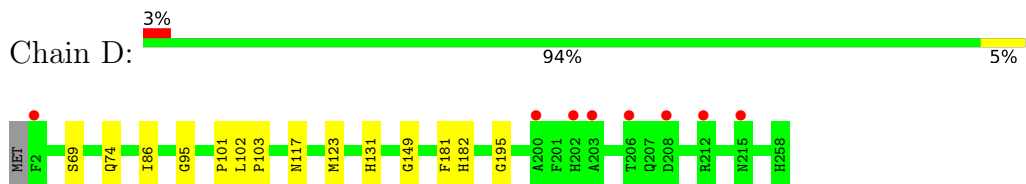
- Molecule 1: Carbonyl reductase



- Molecule 1: Carbonyl reductase



- Molecule 1: Carbonyl reductase



## 4 Data and refinement statistics i

Property	Value	Source
Space group	P 1	Depositor
Cell constants a, b, c, $\alpha$ , $\beta$ , $\gamma$	60.40Å 64.19Å 74.44Å 80.15° 66.08° 64.98°	Depositor
Resolution (Å)	22.68 – 1.63 22.68 – 1.63	Depositor EDS
% Data completeness (in resolution range)	95.9 (22.68-1.63) 95.9 (22.68-1.63)	Depositor EDS
$R_{merge}$	0.04	Depositor
$R_{sym}$	(Not available)	Depositor
$\langle I/\sigma(I) \rangle$ <sup>1</sup>	3.41 (at 1.63Å)	Xtrriage
Refinement program	REFMAC 5.2.0019	Depositor
R, $R_{free}$	0.172 , 0.209 0.172 , 0.207	Depositor DCC
$R_{free}$ test set	5537 reflections (5.02%)	wwPDB-VP
Wilson B-factor (Å <sup>2</sup> )	16.9	Xtrriage
Anisotropy	0.077	Xtrriage
Bulk solvent $k_{sol}$ (e/Å <sup>3</sup> ), $B_{sol}$ (Å <sup>2</sup> )	0.35 , 38.7	EDS
L-test for twinning <sup>2</sup>	$\langle  L  \rangle = 0.51$ , $\langle L^2 \rangle = 0.34$	Xtrriage
Estimated twinning fraction	0.486 for -h,-k,-h+1	Xtrriage
$F_o, F_c$ correlation	0.97	EDS
Total number of atoms	8911	wwPDB-VP
Average B, all atoms (Å <sup>2</sup> )	19.0	wwPDB-VP

Xtrriage's analysis on translational NCS is as follows: *The largest off-origin peak in the Patterson function is 5.92% of the height of the origin peak. No significant pseudotranslation is detected.*

<sup>1</sup>Intensities estimated from amplitudes.

<sup>2</sup>Theoretical values of  $\langle |L| \rangle$ ,  $\langle L^2 \rangle$  for acentric reflections are 0.5, 0.333 respectively for untwinned datasets, and 0.375, 0.2 for perfectly twinned datasets.



## 5 Model quality [i](#)

### 5.1 Standard geometry [i](#)

Bond lengths and bond angles in the following residue types are not validated in this section: NAP, TBU

The Z score for a bond length (or angle) is the number of standard deviations the observed value is removed from the expected value. A bond length (or angle) with  $|Z| > 5$  is considered an outlier worth inspection. RMSZ is the root-mean-square of all Z scores of the bond lengths (or angles).

Mol	Chain	Bond lengths		Bond angles	
		RMSZ	# Z  >5	RMSZ	# Z  >5
1	A	0.39	0/1983	0.49	0/2678
1	B	0.39	0/1964	0.48	0/2653
1	C	0.38	0/1992	0.48	0/2689
1	D	0.38	0/1992	0.48	0/2690
All	All	0.38	0/7931	0.48	0/10710

There are no bond length outliers.

There are no bond angle outliers.

There are no chirality outliers.

There are no planarity outliers.

### 5.2 Too-close contacts [i](#)

In the following table, the Non-H and H(model) columns list the number of non-hydrogen atoms and hydrogen atoms in the chain respectively. The H(added) column lists the number of hydrogen atoms added and optimized by MolProbity. The Clashes column lists the number of clashes within the asymmetric unit, whereas Symm-Clashes lists symmetry-related clashes.

Mol	Chain	Non-H	H(model)	H(added)	Clashes	Symm-Clashes
1	A	1944	0	1913	18	0
1	B	1925	0	1898	20	0
1	C	1950	0	1933	20	0
1	D	1953	0	1927	22	0
2	A	48	0	25	1	0
2	B	48	0	25	1	0
2	C	48	0	25	1	0
2	D	48	0	25	2	0
3	A	5	0	10	14	0

*Continued on next page...*

*Continued from previous page...*

Mol	Chain	Non-H	H(model)	H(added)	Clashes	Symm-Clashes
3	B	5	0	10	16	0
3	C	5	0	10	12	0
3	D	5	0	10	11	0
4	A	229	0	0	0	0
4	B	242	0	0	0	0
4	C	241	0	0	1	0
4	D	215	0	0	1	0
All	All	8911	0	7811	80	0

The all-atom clashscore is defined as the number of clashes found per 1000 atoms (including hydrogen atoms). The all-atom clashscore for this structure is 5.

All (80) close contacts within the same asymmetric unit are listed below, sorted by their clash magnitude.

Atom-1	Atom-2	Interatomic distance (Å)	Clash overlap (Å)
1:A:181:PHE:HB2	3:A:1001:TBU:H11	1.38	1.04
1:B:181:PHE:HB2	3:B:1001:TBU:H11	1.42	1.01
1:D:181:PHE:HB2	3:D:1001:TBU:H21	1.49	0.95
1:C:181:PHE:HB2	3:C:1001:TBU:H11	1.54	0.87
1:B:102:LEU:H	3:D:1001:TBU:C3	1.99	0.75
1:D:181:PHE:HB2	3:D:1001:TBU:C2	2.18	0.74
1:A:177:ASN:ND2	3:A:1001:TBU:H13	2.05	0.71
3:A:1001:TBU:C2	1:C:102:LEU:H	2.04	0.71
1:A:177:ASN:HD21	3:A:1001:TBU:H13	1.55	0.71
1:B:102:LEU:H	3:D:1001:TBU:H32	1.55	0.70
1:C:181:PHE:HD2	3:C:1001:TBU:H12	1.57	0.70
1:B:181:PHE:HB2	3:B:1001:TBU:C1	2.19	0.70
1:D:95:GLY:H	1:D:117:ASN:HD21	1.38	0.70
3:B:1001:TBU:C2	1:D:102:LEU:H	2.04	0.69
1:C:181:PHE:HB2	3:C:1001:TBU:C1	2.23	0.69
1:B:95:GLY:H	1:B:117:ASN:HD21	1.42	0.68
1:A:95:GLY:H	1:A:117:ASN:HD21	1.41	0.68
1:A:102:LEU:H	3:C:1001:TBU:C2	2.06	0.67
1:A:177:ASN:HD21	3:A:1001:TBU:C1	2.06	0.67
1:B:181:PHE:HD2	3:B:1001:TBU:H12	1.58	0.67
1:A:102:LEU:H	3:C:1001:TBU:H22	1.61	0.65
1:D:181:PHE:HD2	3:D:1001:TBU:H22	1.62	0.64
1:C:95:GLY:H	1:C:117:ASN:HD21	1.45	0.64
3:A:1001:TBU:H22	1:C:102:LEU:H	1.63	0.64
1:D:86[A]:ILE:HG22	1:D:131:HIS:CB	2.28	0.63
1:A:181:PHE:HB2	3:A:1001:TBU:C1	2.20	0.62

*Continued on next page...*

*Continued from previous page...*

Atom-1	Atom-2	Interatomic distance (Å)	Clash overlap (Å)
1:A:177:ASN:ND2	3:A:1001:TBU:C1	2.63	0.62
1:B:181:PHE:CD2	3:B:1001:TBU:H12	2.35	0.61
1:B:177:ASN:ND2	3:B:1001:TBU:H13	2.17	0.60
3:B:1001:TBU:H22	1:D:102:LEU:H	1.64	0.60
1:B:177:ASN:HD21	3:B:1001:TBU:C1	2.15	0.60
1:C:121:VAL:HG11	1:C:171[B]:LEU:HD13	1.83	0.60
1:C:147:SER:HB3	1:C:171[B]:LEU:HD21	1.84	0.59
1:C:182:HIS:NE2	3:C:1001:TBU:H21	2.18	0.58
1:B:101:PRO:CA	3:D:1001:TBU:H33	2.34	0.58
3:B:1001:TBU:H23	1:D:101:PRO:CA	2.34	0.58
1:D:86[A]:ILE:HG22	1:D:131:HIS:HB2	1.86	0.56
1:B:101:PRO:HA	3:D:1001:TBU:H33	1.87	0.56
1:B:177:ASN:HD21	3:B:1001:TBU:H13	1.71	0.56
3:A:1001:TBU:H23	1:C:101:PRO:CA	2.37	0.55
1:D:181:PHE:CD2	3:D:1001:TBU:H22	2.41	0.55
1:D:86[A]:ILE:HG22	1:D:131:HIS:HB3	1.89	0.55
3:B:1001:TBU:H23	1:D:101:PRO:HA	1.89	0.55
1:C:195:GLY:O	2:C:3001:NAP:H4N	2.07	0.55
1:B:177:ASN:ND2	3:B:1001:TBU:C1	2.70	0.54
1:B:102:LEU:H	3:D:1001:TBU:H33	1.73	0.54
3:B:1001:TBU:H23	1:D:102:LEU:H	1.71	0.54
1:A:181:PHE:CD2	3:A:1001:TBU:H12	2.45	0.52
3:A:1001:TBU:H23	1:C:102:LEU:H	1.73	0.52
1:D:182:HIS:NE2	3:D:1001:TBU:H31	2.25	0.52
1:A:182:HIS:NE2	3:A:1001:TBU:H21	2.25	0.51
1:C:181:PHE:CD2	3:C:1001:TBU:H12	2.42	0.51
1:A:195:GLY:O	2:A:3001:NAP:H4N	2.11	0.51
1:B:195:GLY:O	2:B:3001:NAP:H4N	2.11	0.50
1:D:195:GLY:O	2:D:3001:NAP:H4N	2.12	0.50
3:A:1001:TBU:H23	1:C:101:PRO:CB	2.43	0.49
1:A:101:PRO:CA	3:C:1001:TBU:H23	2.43	0.48
3:A:1001:TBU:H23	1:C:101:PRO:HA	1.96	0.47
1:D:86[A]:ILE:CG2	1:D:131:HIS:HB2	2.45	0.47
1:A:102:LEU:H	3:C:1001:TBU:H23	1.79	0.47
1:A:13:THR:O	1:A:92:ASN:HB3	2.16	0.45
1:A:101:PRO:HA	3:C:1001:TBU:H23	2.00	0.44
3:B:1001:TBU:H23	1:D:101:PRO:CB	2.47	0.44
1:B:13:THR:O	1:B:92:ASN:HB3	2.17	0.44
1:D:101:PRO:HB2	1:D:103:PRO:HD2	2.00	0.43
1:A:101:PRO:CB	3:C:1001:TBU:H23	2.48	0.43
1:D:149:GLY:O	2:D:3001:NAP:H6N	2.19	0.43

*Continued on next page...*

Continued from previous page...

Atom-1	Atom-2	Interatomic distance (Å)	Clash overlap (Å)
1:B:101:PRO:HB2	1:B:103:PRO:HD2	2.02	0.42
1:B:101:PRO:CB	3:D:1001:TBU:H33	2.50	0.42
1:C:74:GLN:HB3	4:C:2075:HOH:O	2.20	0.42
1:D:69[A]:SER:OG	1:D:123:MET:HG3	2.20	0.41
1:B:182:HIS:NE2	3:B:1001:TBU:H21	2.35	0.41
1:A:90:ILE:HA	1:A:146:ILE:O	2.20	0.41
1:C:121:VAL:HG11	1:C:171[B]:LEU:CD1	2.50	0.41
1:D:74:GLN:HB3	4:D:2063:HOH:O	2.21	0.41
1:B:90:ILE:HA	1:B:146:ILE:O	2.21	0.40
1:C:90:ILE:HA	1:C:146:ILE:O	2.22	0.40
3:B:1001:TBU:H23	1:D:102:LEU:N	2.36	0.40
1:C:101:PRO:HB2	1:C:103:PRO:HD2	2.04	0.40
1:C:177:ASN:OD1	3:C:1001:TBU:H13	2.21	0.40

There are no symmetry-related clashes.

## 5.3 Torsion angles [i](#)

### 5.3.1 Protein backbone [i](#)

In the following table, the Percentiles column shows the percent Ramachandran outliers of the chain as a percentile score with respect to all X-ray entries followed by that with respect to entries of similar resolution.

The Analysed column shows the number of residues for which the backbone conformation was analysed, and the total number of residues.

Mol	Chain	Analysed	Favoured	Allowed	Outliers	Percentiles	
1	A	261/258 (101%)	257 (98%)	4 (2%)	0	100	100
1	B	259/258 (100%)	255 (98%)	4 (2%)	0	100	100
1	C	262/258 (102%)	256 (98%)	6 (2%)	0	100	100
1	D	262/258 (102%)	257 (98%)	5 (2%)	0	100	100
All	All	1044/1032 (101%)	1025 (98%)	19 (2%)	0	100	100

There are no Ramachandran outliers to report.

### 5.3.2 Protein sidechains [i](#)

In the following table, the Percentiles column shows the percent sidechain outliers of the chain as a percentile score with respect to all X-ray entries followed by that with respect to entries of similar resolution.

The Analysed column shows the number of residues for which the sidechain conformation was analysed, and the total number of residues.

Mol	Chain	Analysed	Rotameric	Outliers	Percentiles	
1	A	193/188 (103%)	193 (100%)	0	100	100
1	B	191/188 (102%)	191 (100%)	0	100	100
1	C	194/188 (103%)	194 (100%)	0	100	100
1	D	194/188 (103%)	194 (100%)	0	100	100
All	All	772/752 (103%)	772 (100%)	0	100	100

There are no protein residues with a non-rotameric sidechain to report.

Sometimes sidechains can be flipped to improve hydrogen bonding and reduce clashes. All (15) such sidechains are listed below:

Mol	Chain	Res	Type
1	B	117	ASN
1	B	177	ASN
1	B	215	ASN
1	A	117	ASN
1	A	177	ASN
1	A	215	ASN
1	C	44	ASN
1	C	91	ASN
1	C	117	ASN
1	C	215	ASN
1	D	44	ASN
1	D	91	ASN
1	D	117	ASN
1	D	215	ASN
1	D	258	HIS

### 5.3.3 RNA [i](#)

There are no RNA molecules in this entry.

## 5.4 Non-standard residues in protein, DNA, RNA chains [i](#)

There are no non-standard protein/DNA/RNA residues in this entry.

## 5.5 Carbohydrates [i](#)

There are no monosaccharides in this entry.

## 5.6 Ligand geometry [i](#)

8 ligands are modelled in this entry.

In the following table, the Counts columns list the number of bonds (or angles) for which Mogul statistics could be retrieved, the number of bonds (or angles) that are observed in the model and the number of bonds (or angles) that are defined in the Chemical Component Dictionary. The Link column lists molecule types, if any, to which the group is linked. The Z score for a bond length (or angle) is the number of standard deviations the observed value is removed from the expected value. A bond length (or angle) with  $|Z| > 2$  is considered an outlier worth inspection. RMSZ is the root-mean-square of all Z scores of the bond lengths (or angles).

Mol	Type	Chain	Res	Link	Bond lengths			Bond angles		
					Counts	RMSZ	# Z  > 2	Counts	RMSZ	# Z  > 2
2	NAP	D	3001	-	45,52,52	1.30	5 (11%)	56,80,80	1.08	3 (5%)
3	TBU	C	1001	-	4,4,4	0.71	0	6,6,6	0.69	0
2	NAP	B	3001	-	45,52,52	1.31	5 (11%)	56,80,80	1.09	3 (5%)
2	NAP	C	3001	-	45,52,52	1.27	4 (8%)	56,80,80	1.09	3 (5%)
3	TBU	A	1001	-	4,4,4	0.57	0	6,6,6	1.06	0
3	TBU	D	1001	-	4,4,4	0.68	0	6,6,6	0.91	0
2	NAP	A	3001	-	45,52,52	1.31	6 (13%)	56,80,80	1.10	2 (3%)
3	TBU	B	1001	-	4,4,4	0.50	0	6,6,6	1.03	0

In the following table, the Chirals column lists the number of chiral outliers, the number of chiral centers analysed, the number of these observed in the model and the number defined in the Chemical Component Dictionary. Similar counts are reported in the Torsion and Rings columns. '-' means no outliers of that kind were identified.

Mol	Type	Chain	Res	Link	Chirals	Torsions	Rings
2	NAP	A	3001	-	-	4/31/67/67	0/5/5/5
2	NAP	C	3001	-	-	6/31/67/67	0/5/5/5
2	NAP	B	3001	-	-	4/31/67/67	0/5/5/5
2	NAP	D	3001	-	-	6/31/67/67	0/5/5/5

All (20) bond length outliers are listed below:

Mol	Chain	Res	Type	Atoms	Z	Observed(Å)	Ideal(Å)
2	A	3001	NAP	C2N-N1N	5.88	1.42	1.35
2	C	3001	NAP	C2N-N1N	5.77	1.42	1.35
2	B	3001	NAP	C2N-N1N	5.77	1.42	1.35
2	D	3001	NAP	C2N-N1N	5.66	1.41	1.35
2	B	3001	NAP	O4D-C1D	2.51	1.44	1.41
2	B	3001	NAP	O4B-C1B	2.51	1.44	1.41
2	A	3001	NAP	O4B-C1B	2.33	1.44	1.41
2	D	3001	NAP	O4B-C1B	2.33	1.44	1.41
2	C	3001	NAP	C6N-N1N	2.28	1.41	1.35
2	D	3001	NAP	O4D-C1D	2.24	1.44	1.41
2	D	3001	NAP	C6N-N1N	2.23	1.40	1.35
2	D	3001	NAP	C3N-C7N	2.22	1.53	1.50
2	A	3001	NAP	O4D-C1D	2.21	1.44	1.41
2	B	3001	NAP	C6N-N1N	2.18	1.40	1.35
2	A	3001	NAP	C3N-C7N	2.15	1.53	1.50
2	C	3001	NAP	O4B-C1B	2.15	1.44	1.41
2	A	3001	NAP	C6N-N1N	2.15	1.40	1.35
2	C	3001	NAP	C3N-C7N	2.09	1.53	1.50
2	B	3001	NAP	C3N-C7N	2.09	1.53	1.50
2	A	3001	NAP	P2B-O2B	2.03	1.63	1.59

All (11) bond angle outliers are listed below:

Mol	Chain	Res	Type	Atoms	Z	Observed(°)	Ideal(°)
2	A	3001	NAP	N3A-C2A-N1A	-4.63	121.45	128.68
2	B	3001	NAP	N3A-C2A-N1A	-4.55	121.57	128.68
2	D	3001	NAP	N3A-C2A-N1A	-4.52	121.61	128.68
2	C	3001	NAP	N3A-C2A-N1A	-4.37	121.85	128.68
2	C	3001	NAP	O4D-C1D-C2D	-2.59	103.14	106.93
2	C	3001	NAP	PN-O3-PA	-2.51	124.22	132.83
2	D	3001	NAP	O4D-C1D-C2D	-2.40	103.42	106.93
2	D	3001	NAP	PN-O3-PA	-2.28	125.02	132.83
2	A	3001	NAP	O4D-C1D-C2D	-2.26	103.62	106.93
2	B	3001	NAP	O4D-C1D-C2D	-2.18	103.73	106.93
2	B	3001	NAP	PN-O3-PA	-2.11	125.60	132.83

There are no chirality outliers.

All (20) torsion outliers are listed below:

Mol	Chain	Res	Type	Atoms
2	B	3001	NAP	C5D-O5D-PN-O3

*Continued on next page...*

*Continued from previous page...*

Mol	Chain	Res	Type	Atoms
2	A	3001	NAP	C5D-O5D-PN-O3
2	C	3001	NAP	C5D-O5D-PN-O3
2	D	3001	NAP	PN-O3-PA-O5B
2	D	3001	NAP	C5D-O5D-PN-O3
2	D	3001	NAP	C5D-O5D-PN-O1N
2	B	3001	NAP	PN-O3-PA-O5B
2	A	3001	NAP	PN-O3-PA-O5B
2	C	3001	NAP	PN-O3-PA-O5B
2	B	3001	NAP	C5D-O5D-PN-O1N
2	A	3001	NAP	C5D-O5D-PN-O1N
2	C	3001	NAP	C5D-O5D-PN-O1N
2	B	3001	NAP	O4B-C4B-C5B-O5B
2	C	3001	NAP	C2B-O2B-P2B-O1X
2	D	3001	NAP	C2B-O2B-P2B-O1X
2	C	3001	NAP	C2B-O2B-P2B-O2X
2	A	3001	NAP	O4B-C4B-C5B-O5B
2	D	3001	NAP	O4B-C4B-C5B-O5B
2	D	3001	NAP	C5D-O5D-PN-O2N
2	C	3001	NAP	O4B-C4B-C5B-O5B

There are no ring outliers.

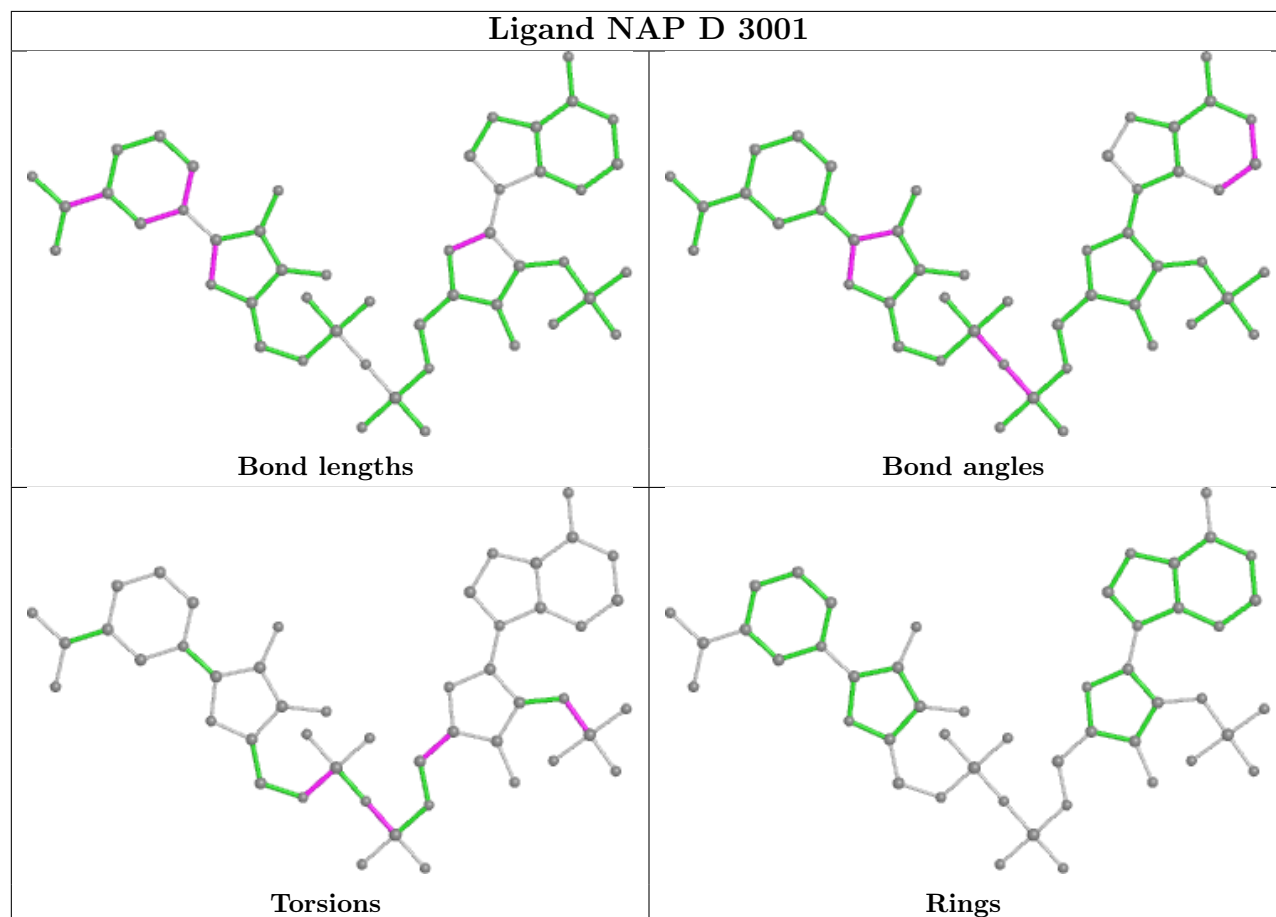
8 monomers are involved in 58 short contacts:

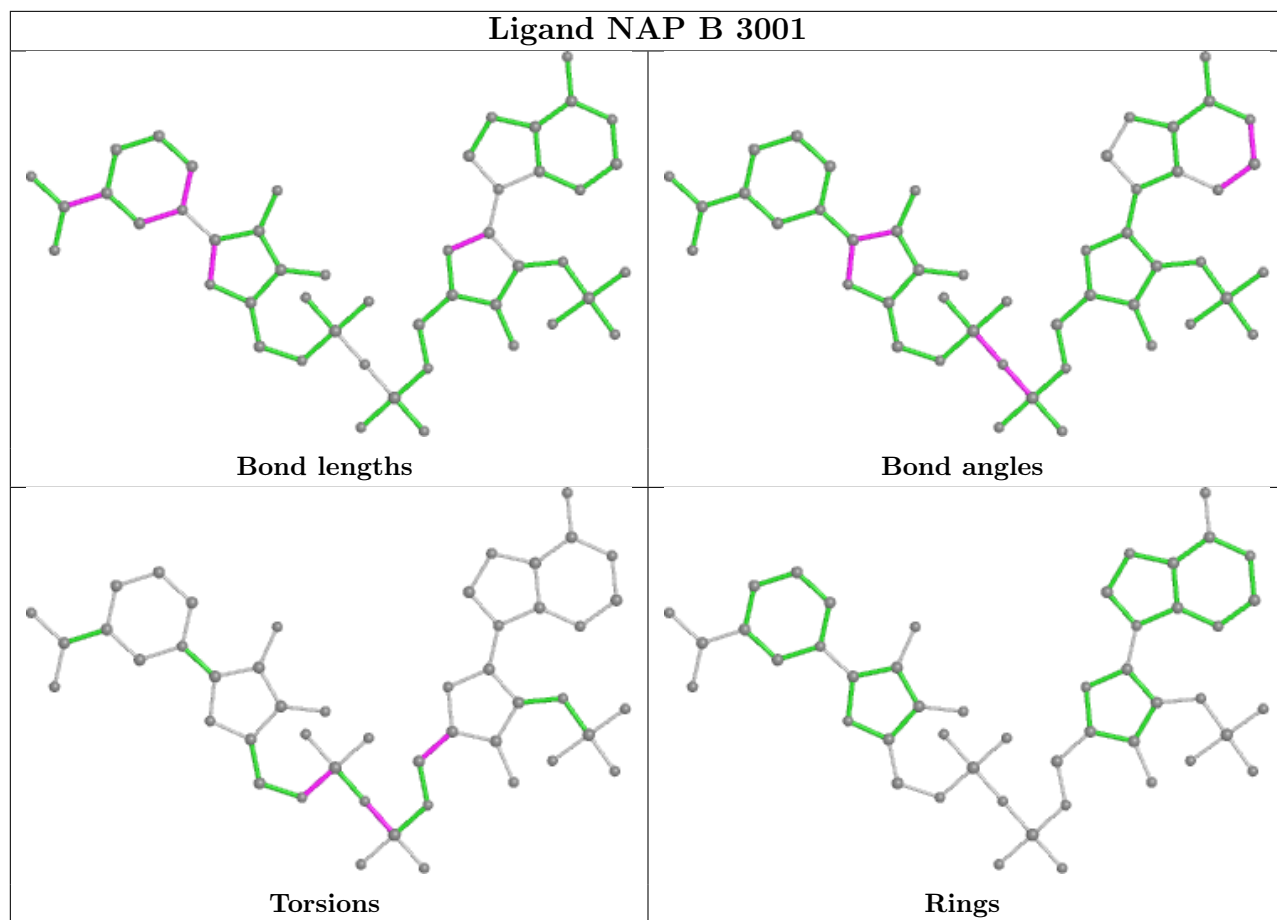
Mol	Chain	Res	Type	Clashes	Symm-Clashes
2	D	3001	NAP	2	0
3	C	1001	TBU	12	0
2	B	3001	NAP	1	0
2	C	3001	NAP	1	0
3	A	1001	TBU	14	0
3	D	1001	TBU	11	0
2	A	3001	NAP	1	0
3	B	1001	TBU	16	0

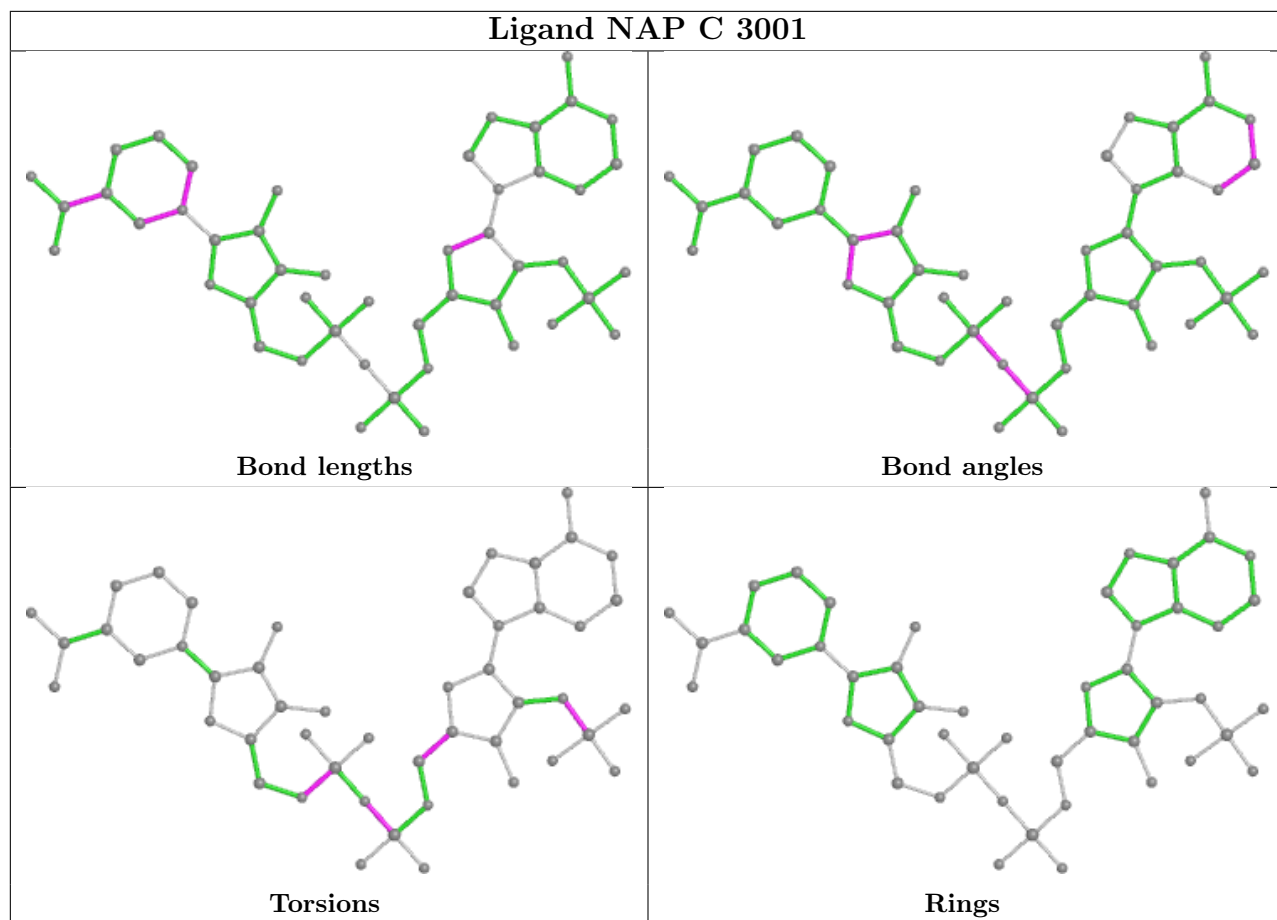
The following is a two-dimensional graphical depiction of Mogul quality analysis of bond lengths, bond angles, torsion angles, and ring geometry for all instances of the Ligand of Interest. In addition, ligands with molecular weight > 250 and outliers as shown on the validation Tables will also be included. For torsion angles, if less than 5% of the Mogul distribution of torsion angles is within 10 degrees of the torsion angle in question, then that torsion angle is considered an outlier. Any bond that is central to one or more torsion angles identified as an outlier by Mogul will be highlighted in the graph. For rings, the root-mean-square deviation (RMSD) between the ring in question and similar rings identified by Mogul is calculated over all ring torsion angles. If the average RMSD is greater than 60 degrees and the minimal RMSD between the ring in question and

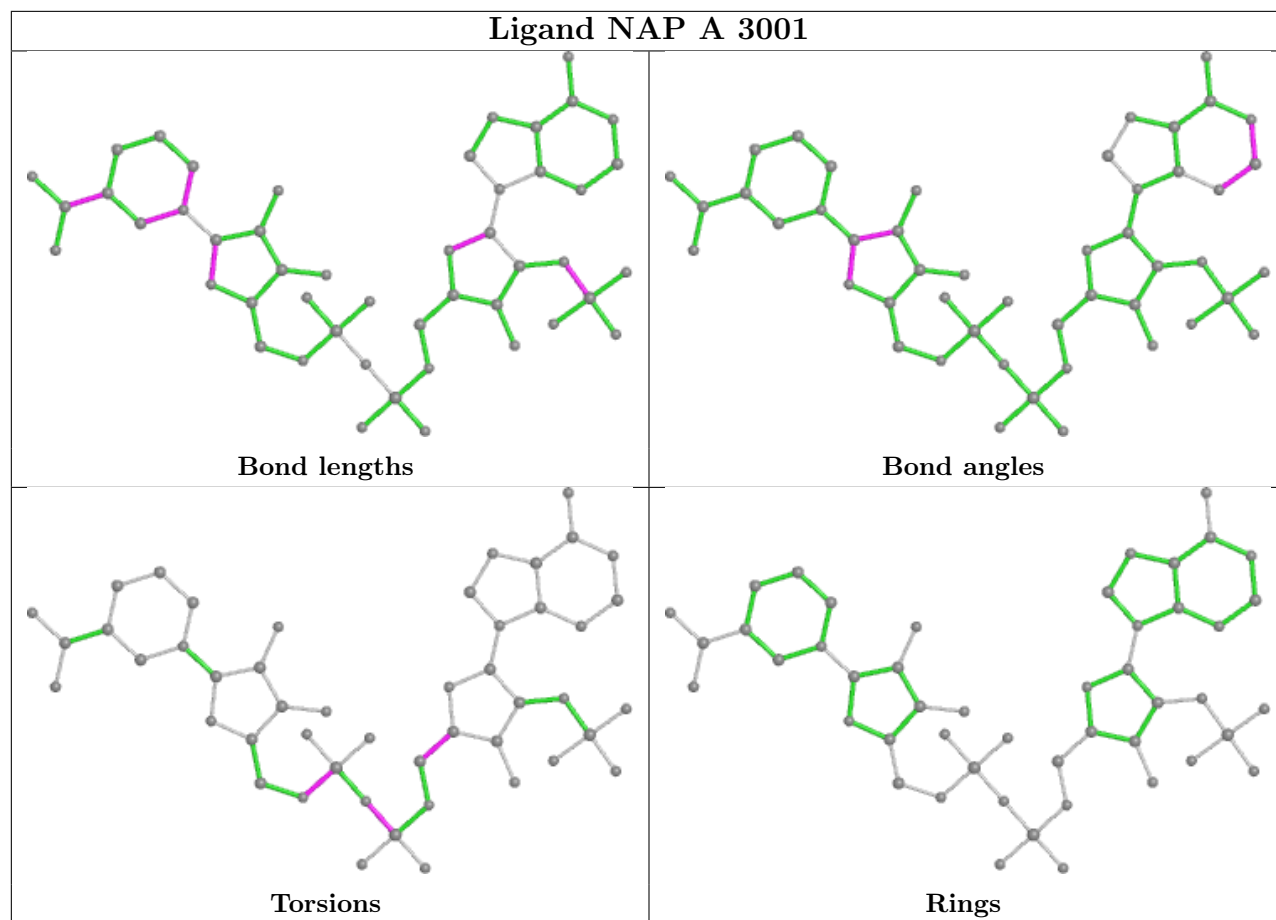


any Mogul-identified rings is also greater than 60 degrees, then that ring is considered an outlier. The outliers are highlighted in purple. The color gray indicates Mogul did not find sufficient equivalents in the CSD to analyse the geometry.









## 5.7 Other polymers [\(i\)](#)

There are no such residues in this entry.

## 5.8 Polymer linkage issues [\(i\)](#)

There are no chain breaks in this entry.

## 6 Fit of model and data [i](#)

### 6.1 Protein, DNA and RNA chains [i](#)

In the following table, the column labelled ‘#RSRZ > 2’ contains the number (and percentage) of RSRZ outliers, followed by percent RSRZ outliers for the chain as percentile scores relative to all X-ray entries and entries of similar resolution. The OWAB column contains the minimum, median, 95<sup>th</sup> percentile and maximum values of the occupancy-weighted average B-factor per residue. The column labelled ‘Q < 0.9’ lists the number of (and percentage) of residues with an average occupancy less than 0.9.

Mol	Chain	Analysed	<RSRZ>	#RSRZ>2	OWAB(Å <sup>2</sup> )	Q<0.9
1	A	257/258 (99%)	-0.17	1 (0%) 92 92	10, 16, 28, 39	0
1	B	257/258 (99%)	-0.17	4 (1%) 72 73	10, 16, 28, 40	0
1	C	257/258 (99%)	-0.08	14 (5%) 25 23	10, 17, 34, 45	0
1	D	257/258 (99%)	-0.08	8 (3%) 49 47	10, 18, 33, 45	0
All	All	1028/1032 (99%)	-0.12	27 (2%) 56 55	10, 17, 31, 45	0

All (27) RSRZ outliers are listed below:

Mol	Chain	Res	Type	RSRZ
1	D	206	THR	4.4
1	C	213	ILE	3.7
1	C	198	ASP	3.4
1	C	43	ALA	3.3
1	D	2	PHE	3.1
1	B	2	PHE	2.9
1	C	209	VAL	2.8
1	D	208	ASP	2.8
1	C	215	ASN	2.7
1	C	202	HIS	2.7
1	C	206	THR	2.7
1	D	200	ALA	2.6
1	D	203	ALA	2.5
1	B	206	THR	2.5
1	C	212[A]	ARG	2.5
1	C	203	ALA	2.4
1	C	208	ASP	2.4
1	D	202	HIS	2.4
1	D	215	ASN	2.3
1	D	212	ARG	2.2
1	C	204	ASP	2.2

*Continued on next page...*

*Continued from previous page...*

Mol	Chain	Res	Type	RSRZ
1	C	201	PHE	2.2
1	B	208	ASP	2.1
1	C	211	ASP	2.1
1	A	206	THR	2.1
1	B	203	ALA	2.1
1	C	199	THR	2.0

## 6.2 Non-standard residues in protein, DNA, RNA chains [i](#)

There are no non-standard protein/DNA/RNA residues in this entry.

## 6.3 Carbohydrates [i](#)

There are no monosaccharides in this entry.

## 6.4 Ligands [i](#)

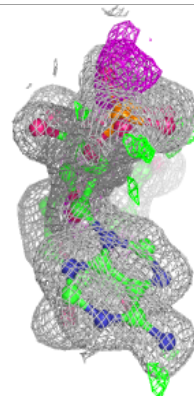
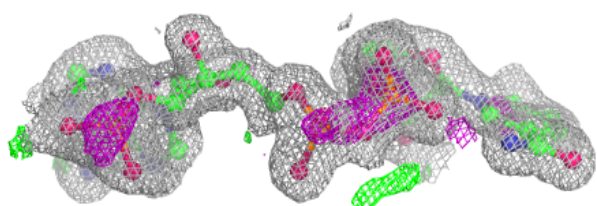
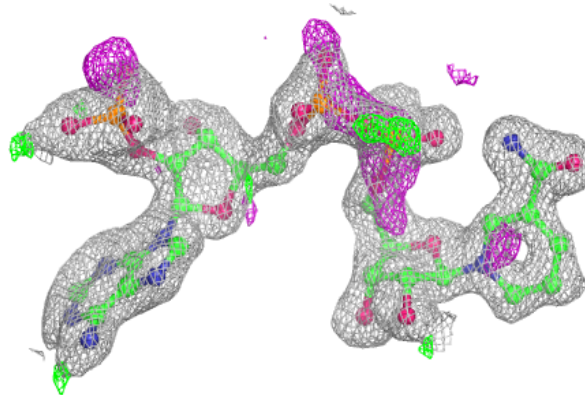
In the following table, the Atoms column lists the number of modelled atoms in the group and the number defined in the chemical component dictionary. The B-factors column lists the minimum, median, 95<sup>th</sup> percentile and maximum values of B factors of atoms in the group. The column labelled 'Q< 0.9' lists the number of atoms with occupancy less than 0.9.

Mol	Type	Chain	Res	Atoms	RSCC	RSR	B-factors(Å <sup>2</sup> )	Q<0.9
3	TBU	B	1001	5/5	0.83	0.17	21,21,22,22	0
3	TBU	C	1001	5/5	0.86	0.16	17,17,18,18	0
3	TBU	A	1001	5/5	0.88	0.17	21,21,21,21	0
3	TBU	D	1001	5/5	0.88	0.16	17,18,18,18	0
2	NAP	C	3001	48/48	0.91	0.13	20,23,26,29	0
2	NAP	D	3001	48/48	0.92	0.13	20,23,27,30	0
2	NAP	A	3001	48/48	0.95	0.09	16,18,22,23	0
2	NAP	B	3001	48/48	0.96	0.09	16,18,23,24	0

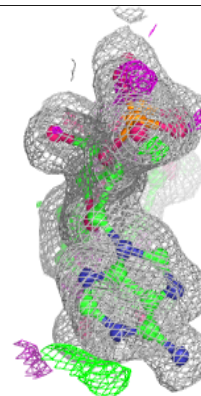
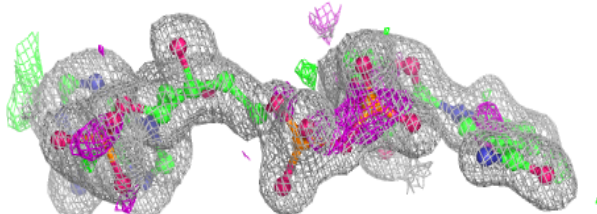
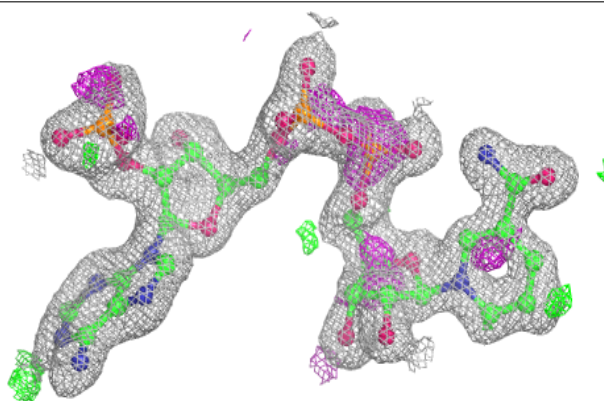
The following is a graphical depiction of the model fit to experimental electron density of all instances of the Ligand of Interest. In addition, ligands with molecular weight > 250 and outliers as shown on the geometry validation Tables will also be included. Each fit is shown from different orientation to approximate a three-dimensional view.

**Electron density around NAP C 3001:**

$2mF_o-DF_c$  (at 0.7 rmsd) in gray  
 $mF_o-DF_c$  (at 3 rmsd) in purple (negative)  
and green (positive)

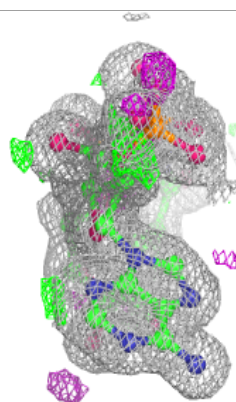
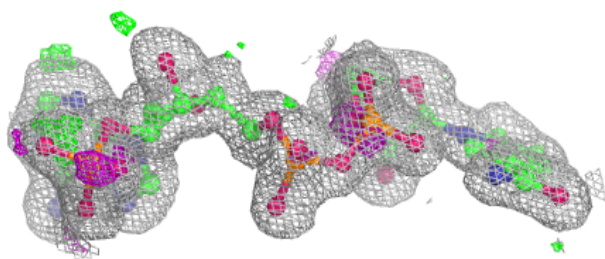
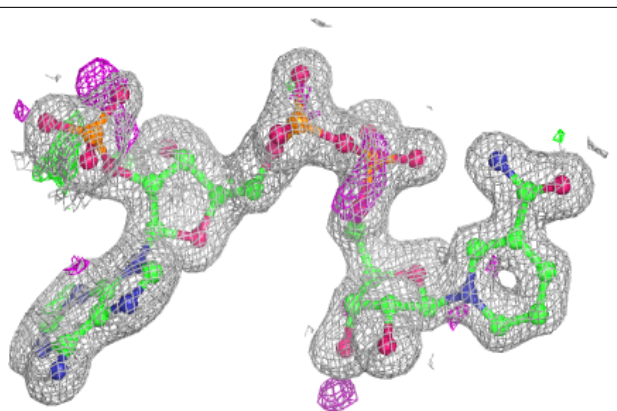
**Electron density around NAP D 3001:**

$2mF_o-DF_c$  (at 0.7 rmsd) in gray  
 $mF_o-DF_c$  (at 3 rmsd) in purple (negative)  
and green (positive)

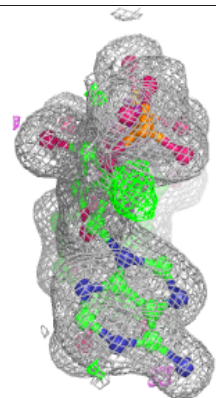
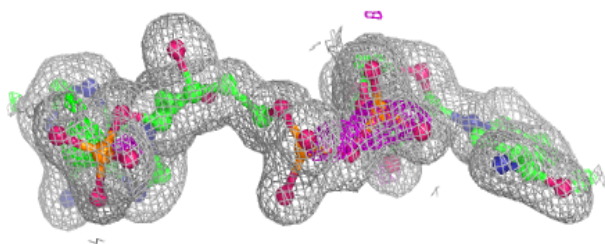
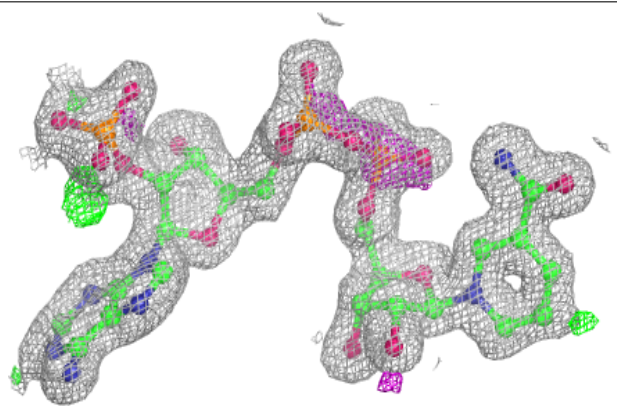


**Electron density around NAP A 3001:**

$2mF_o-DF_c$  (at 0.7 rmsd) in gray  
 $mF_o-DF_c$  (at 3 rmsd) in purple (negative)  
and green (positive)

**Electron density around NAP B 3001:**

$2mF_o-DF_c$  (at 0.7 rmsd) in gray  
 $mF_o-DF_c$  (at 3 rmsd) in purple (negative)  
and green (positive)





## 6.5 Other polymers [i](#)

There are no such residues in this entry.