



Instructions for ElmerGUI Tutorials

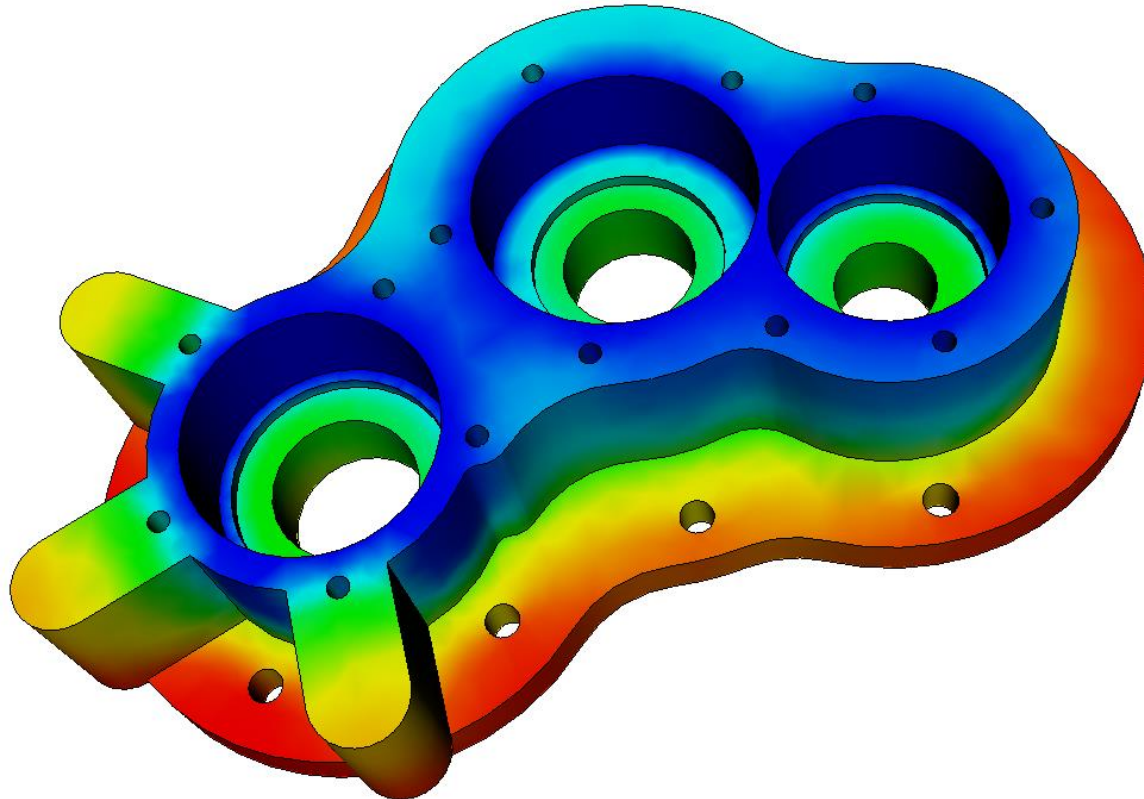
ElmerTeam
CSC – IT Center for Science

Tutorials GUI instructions

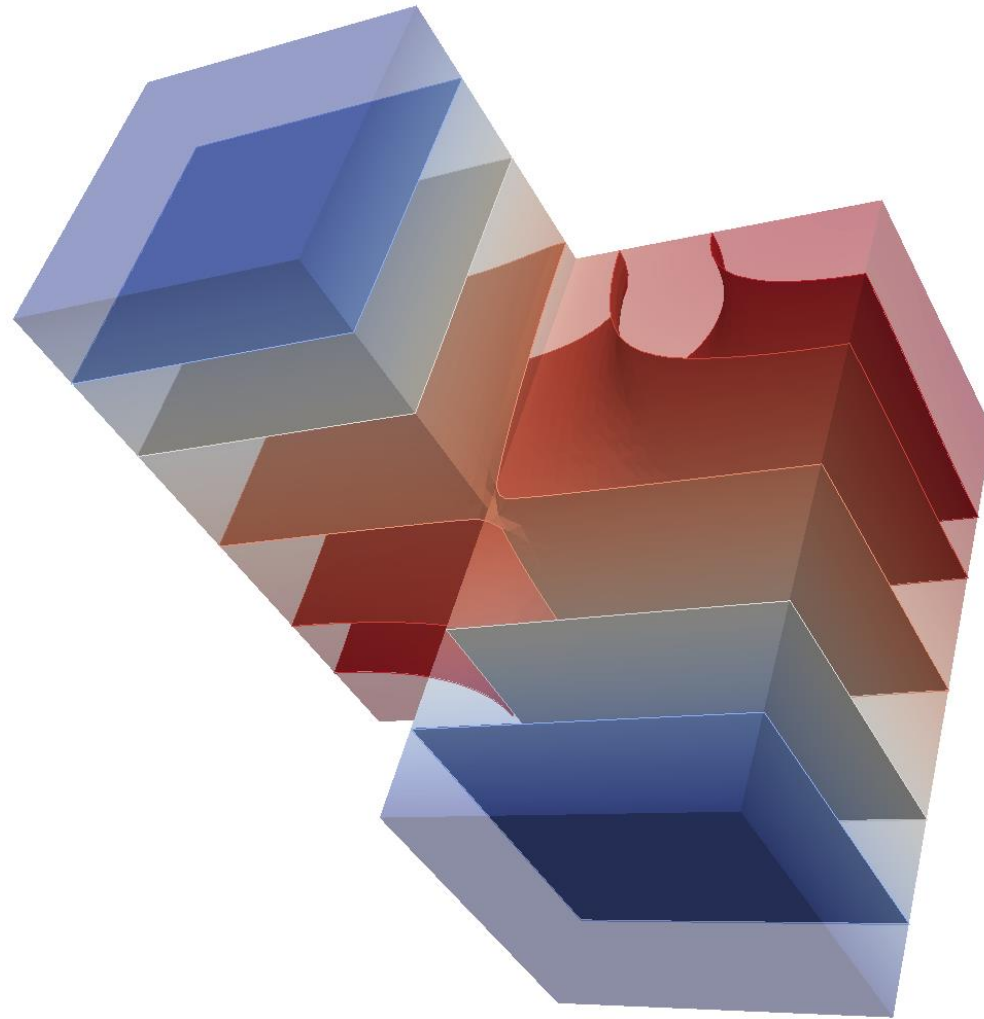


- Copy and unzip the virtual machine
- Start Virtual Machine under VMPlayer
- Input files should be available under **`~/Source/elmerfem/ElmerGUI/samples`**
- The instructions written in verbatim refer to operations with the GUI.
 - Intendation means step in the menu hierarchy.
- Missing solver menus may be found at **`/usr/local/Elmer_devel/share/ElmerGUI/edf-extra`**
- To use **Paraview** change the Post File suffix to **`.vtu`**

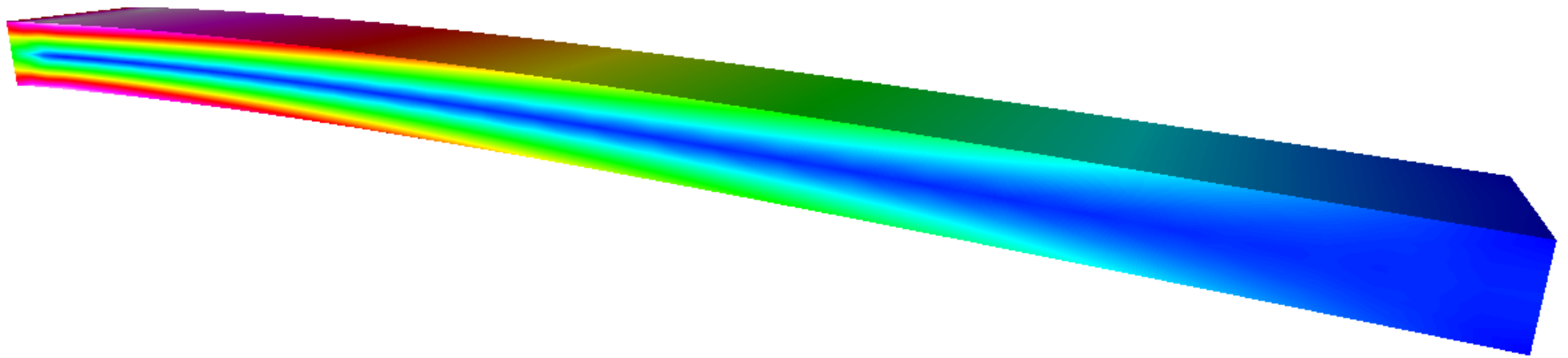
1. Temperature field of a solid object



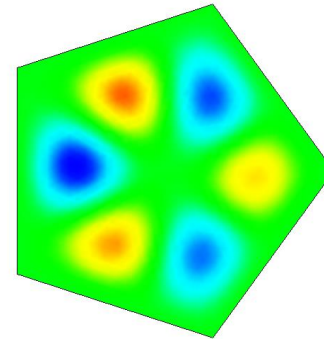
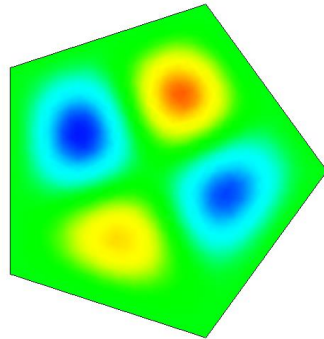
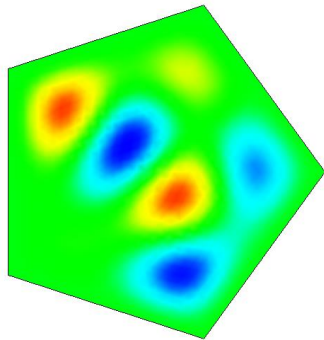
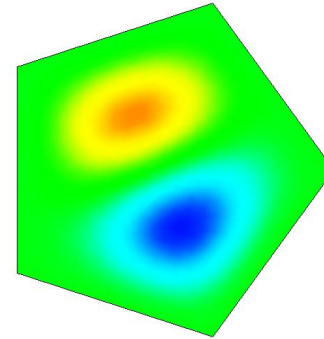
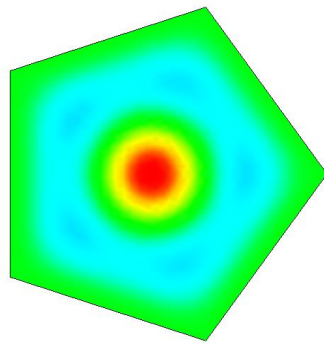
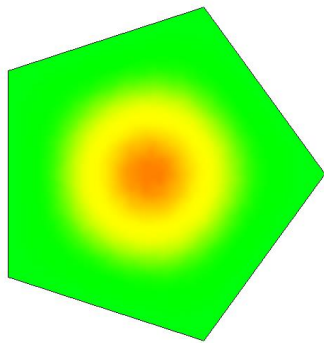
2. Model PDE



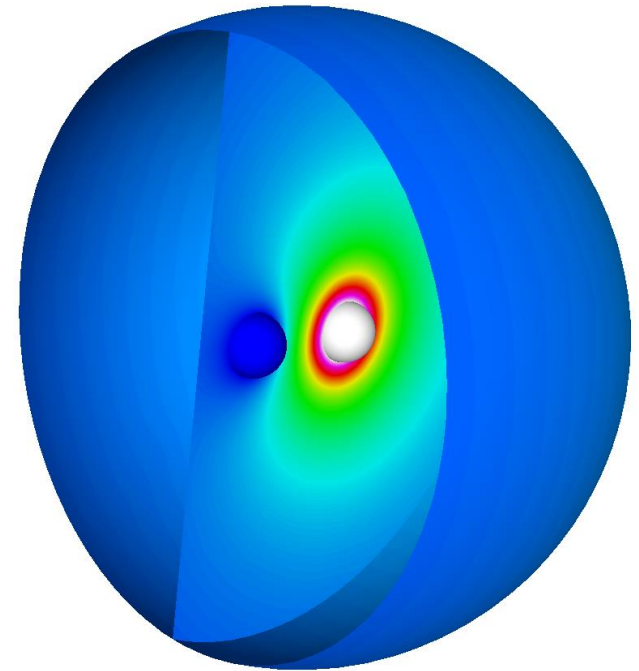
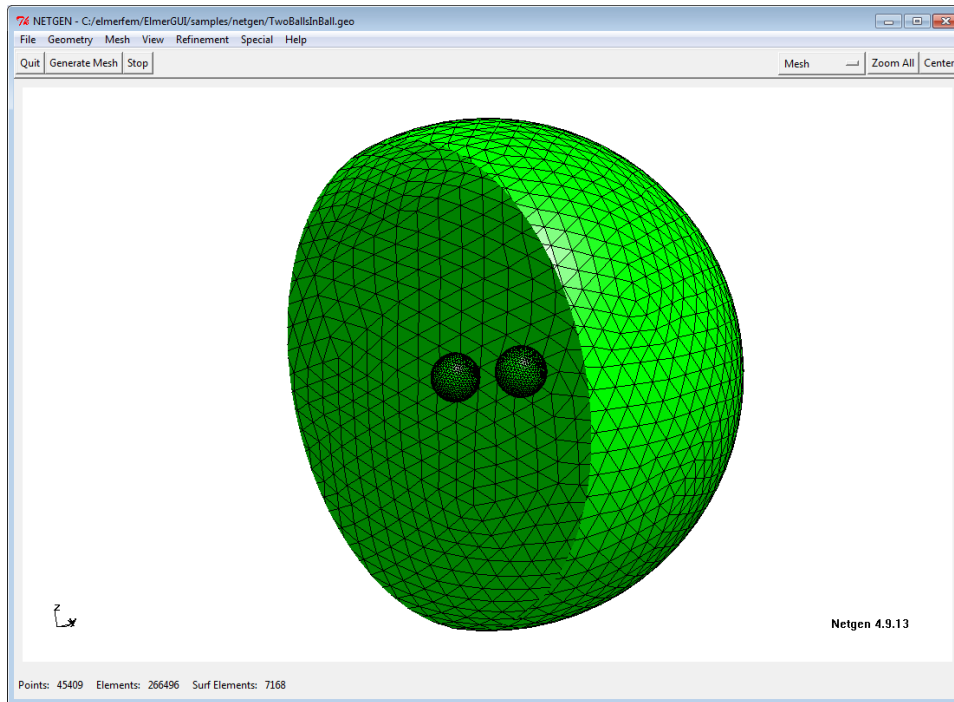
3. Loaded elastic beam in 3D



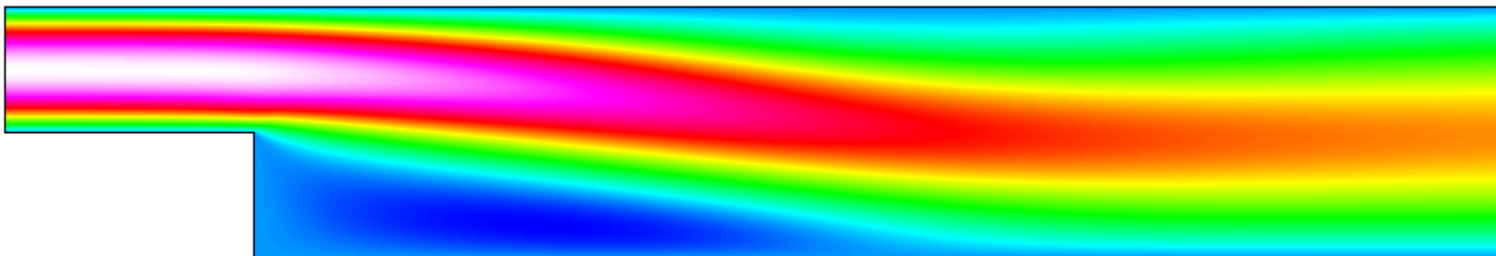
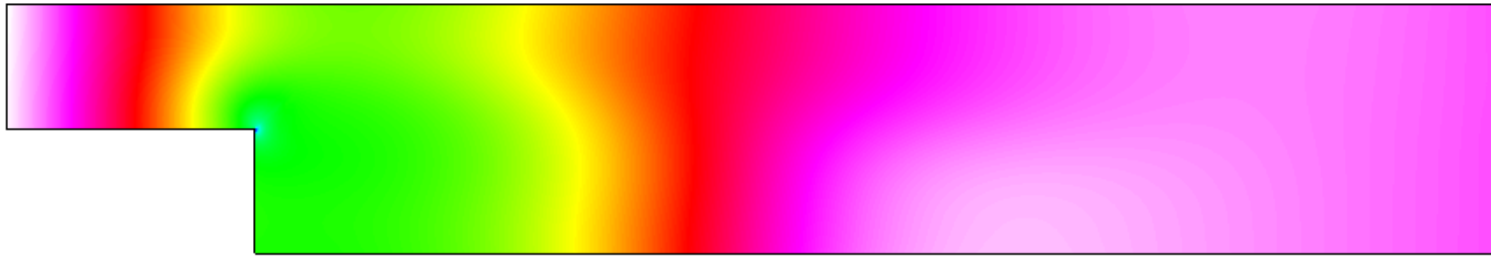
4. Eigenmodes of a elastic plate



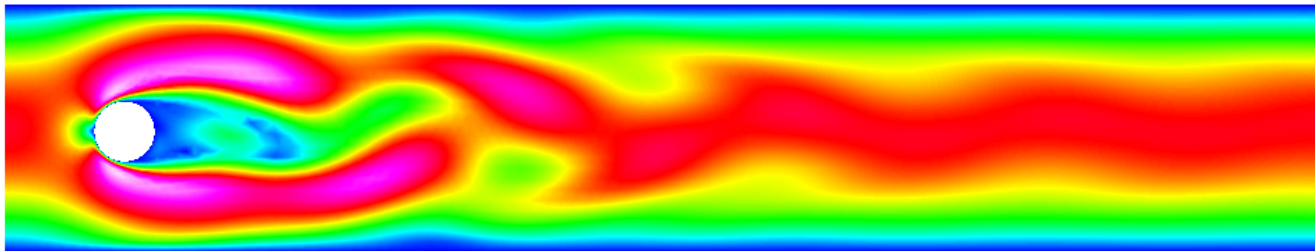
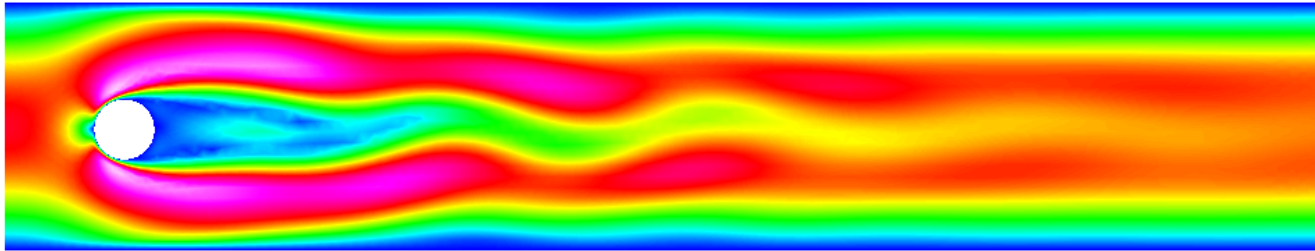
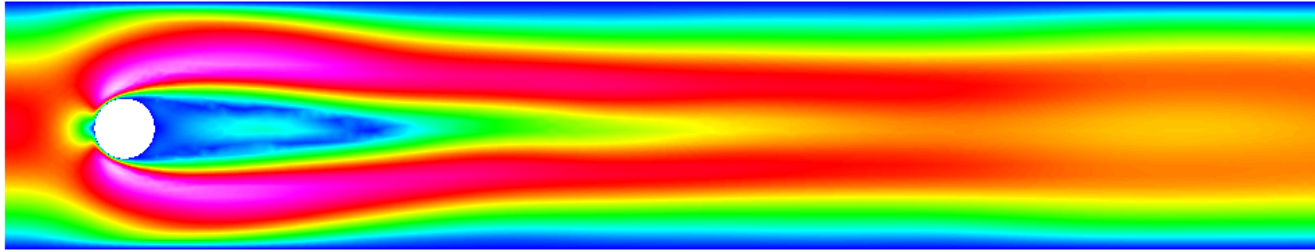
5. Capacitance of two balls in free space



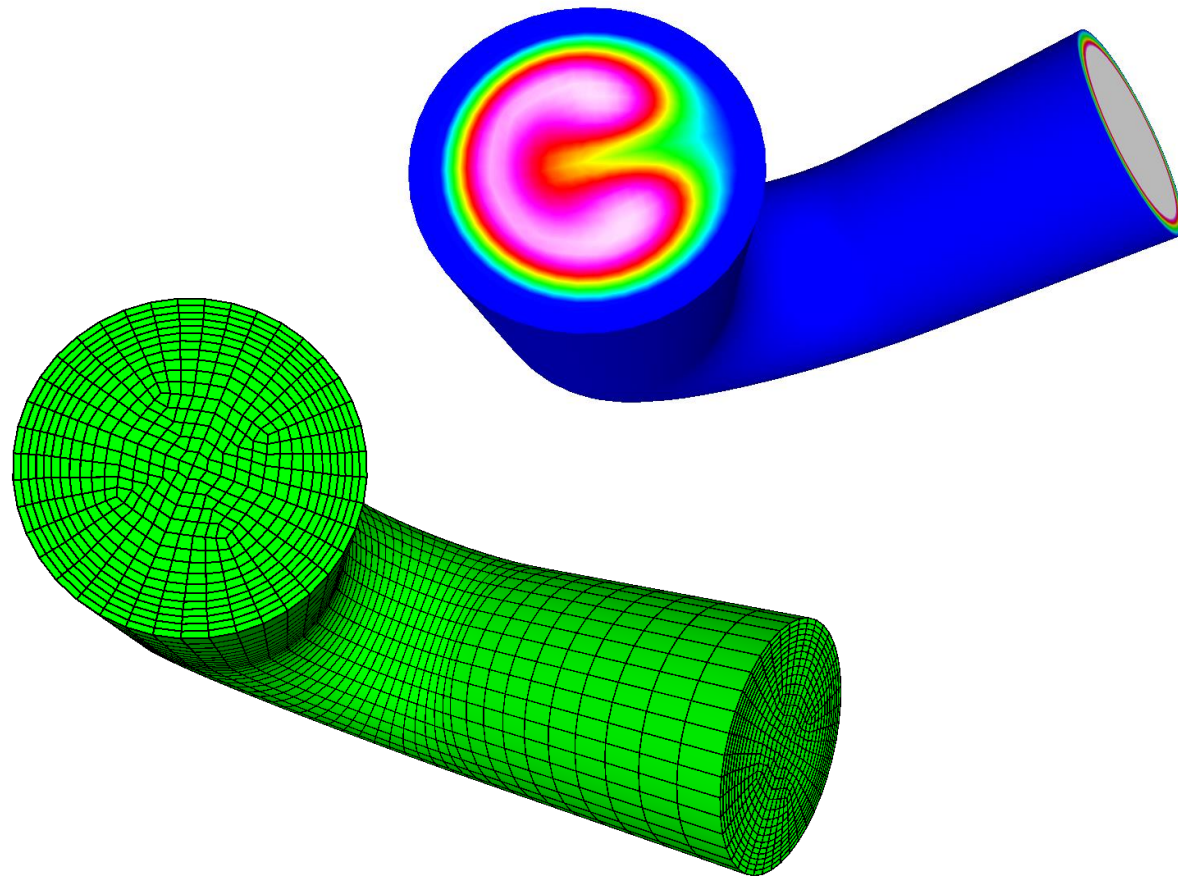
6. Flow passing a step, $Re=100$



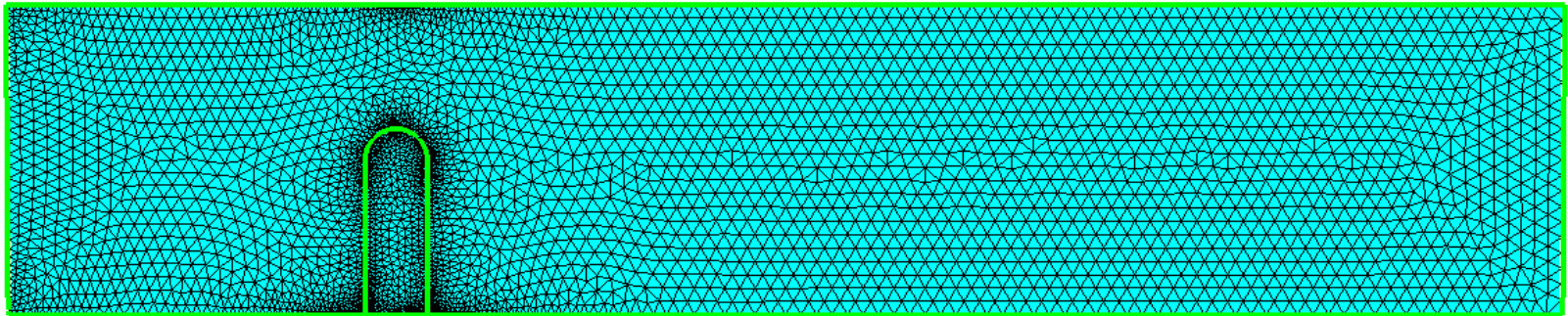
7. Vortex shedding



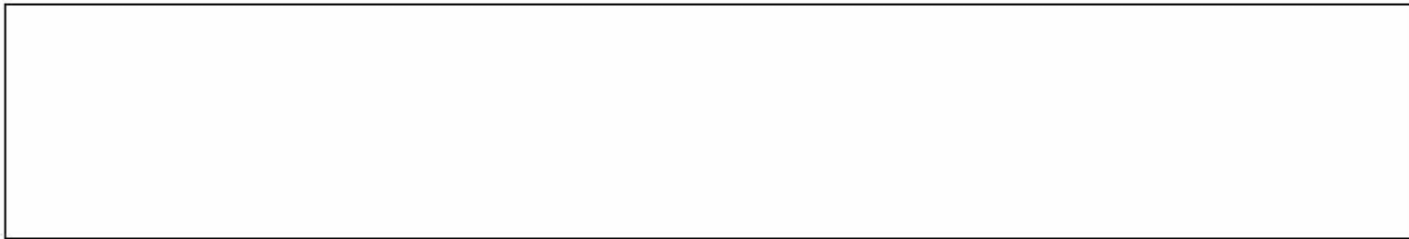
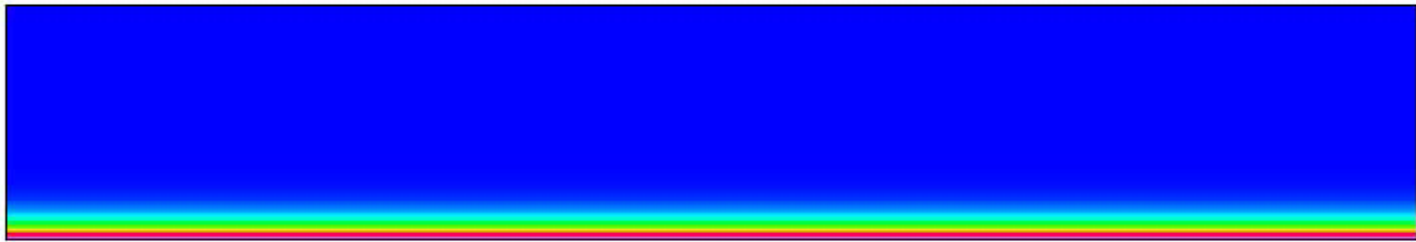
8. Thermal flow in curved pipe



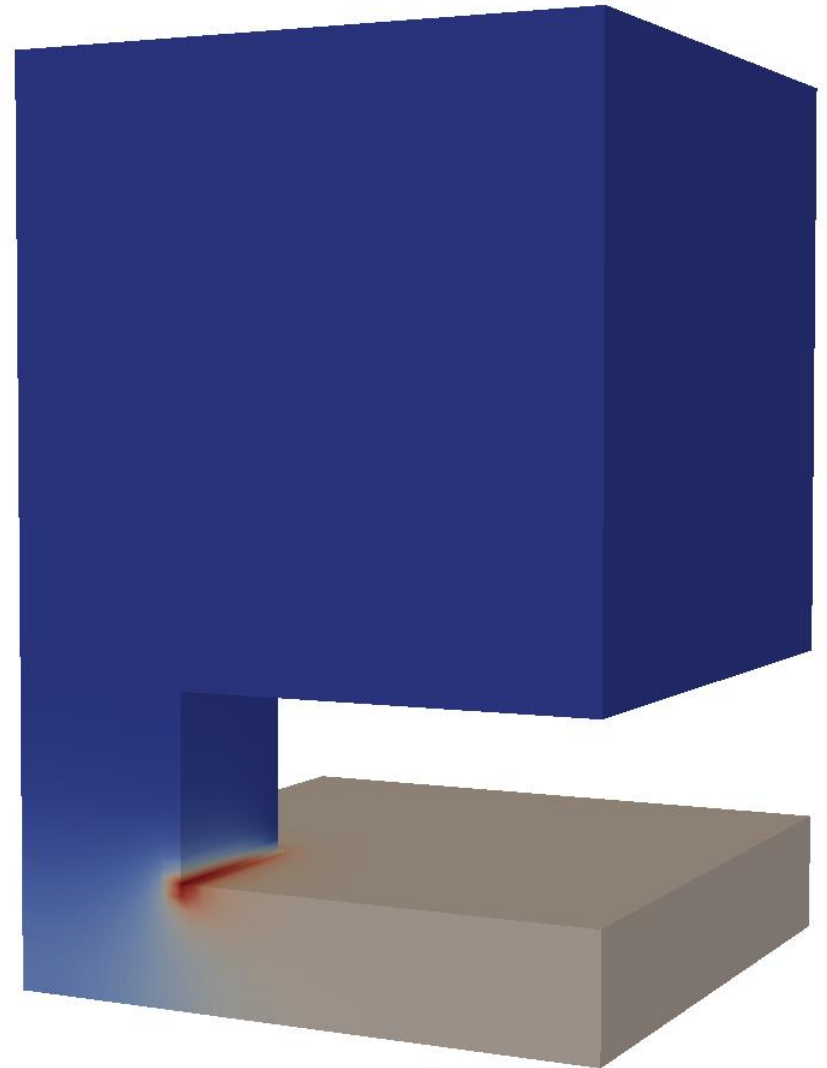
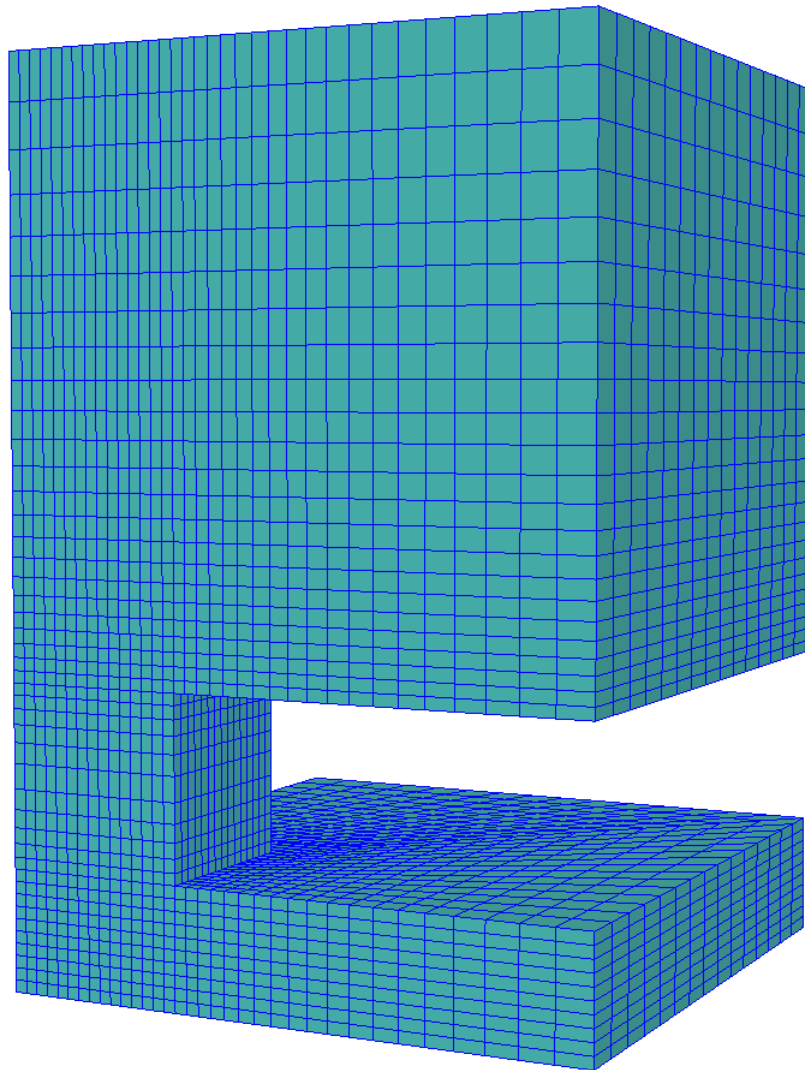
9. Obstacle with fluid-structure interaction



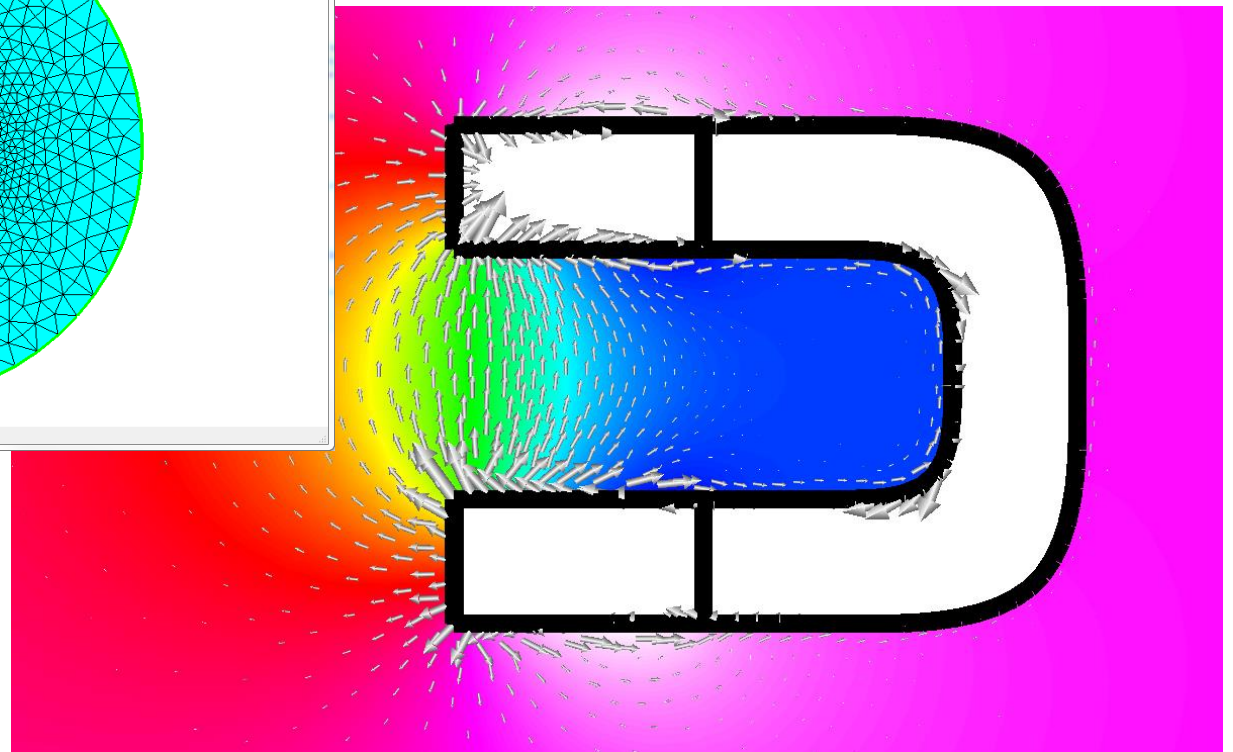
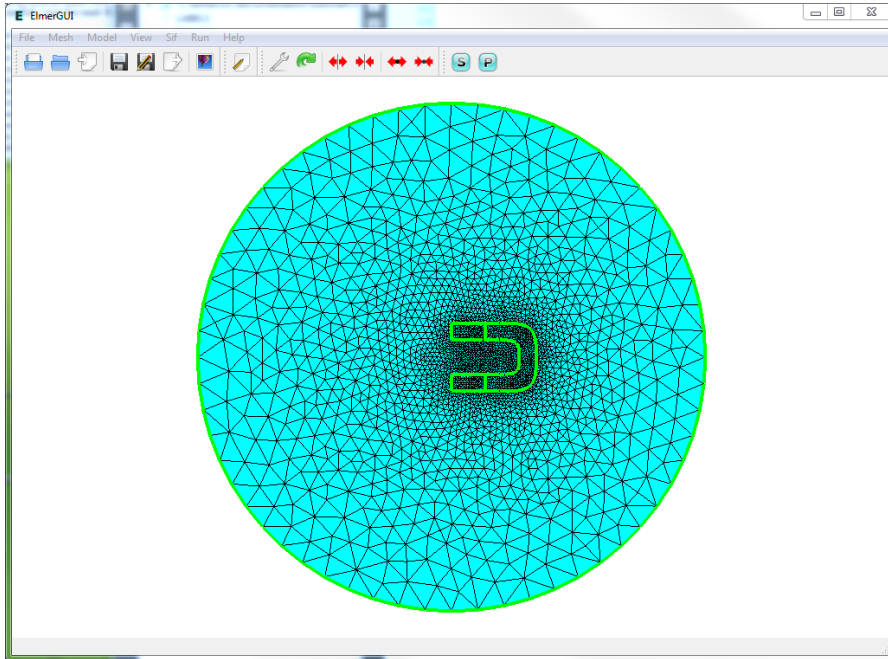
10. Rayleigh-Benard Instability



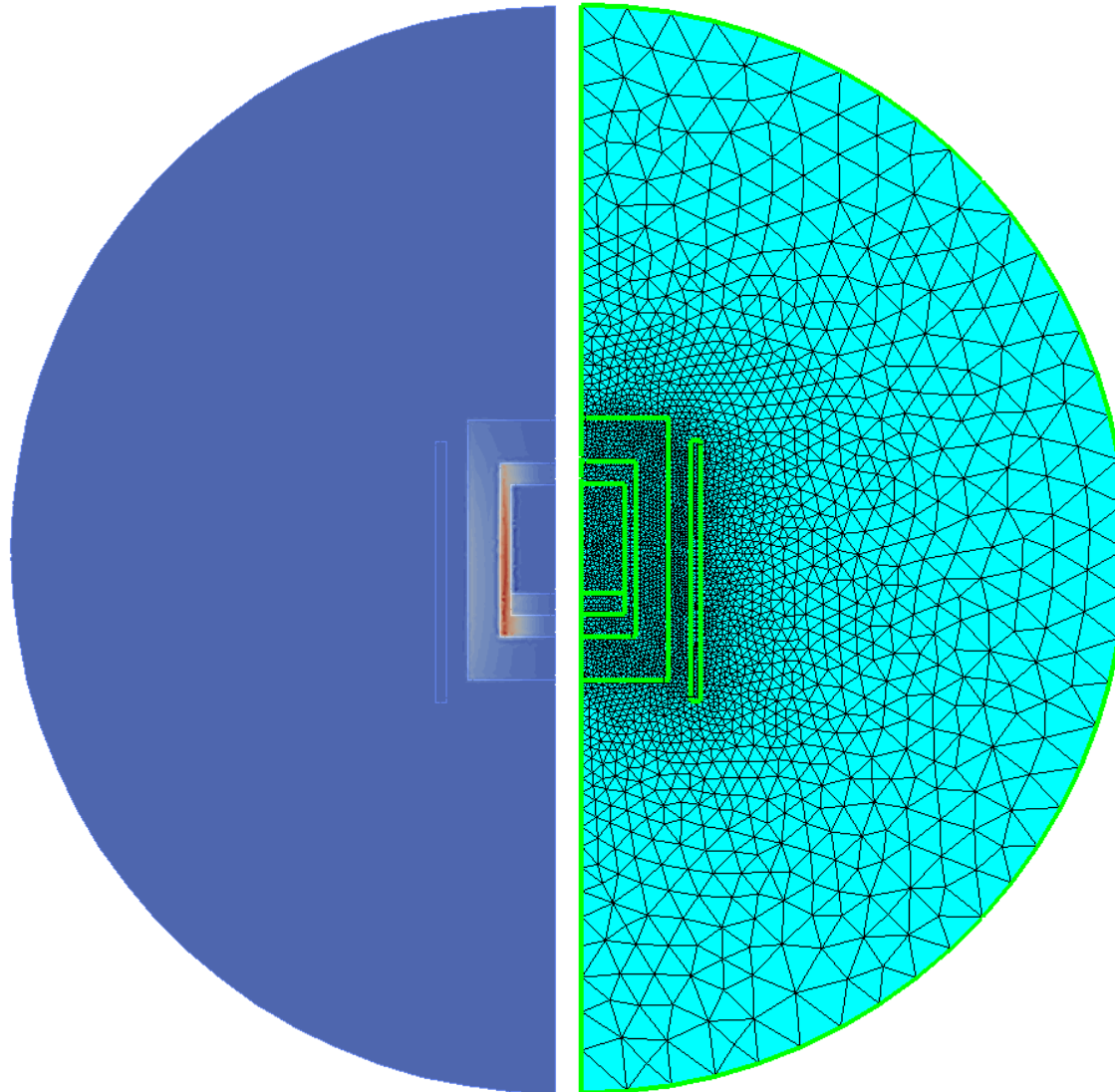
11. Capacitance of a perforated plate



12. Permanent magnet shaped like a horse shoe



13. Induction heating in a graphite crucible



14. Electromagnetic waves in a waveguide

