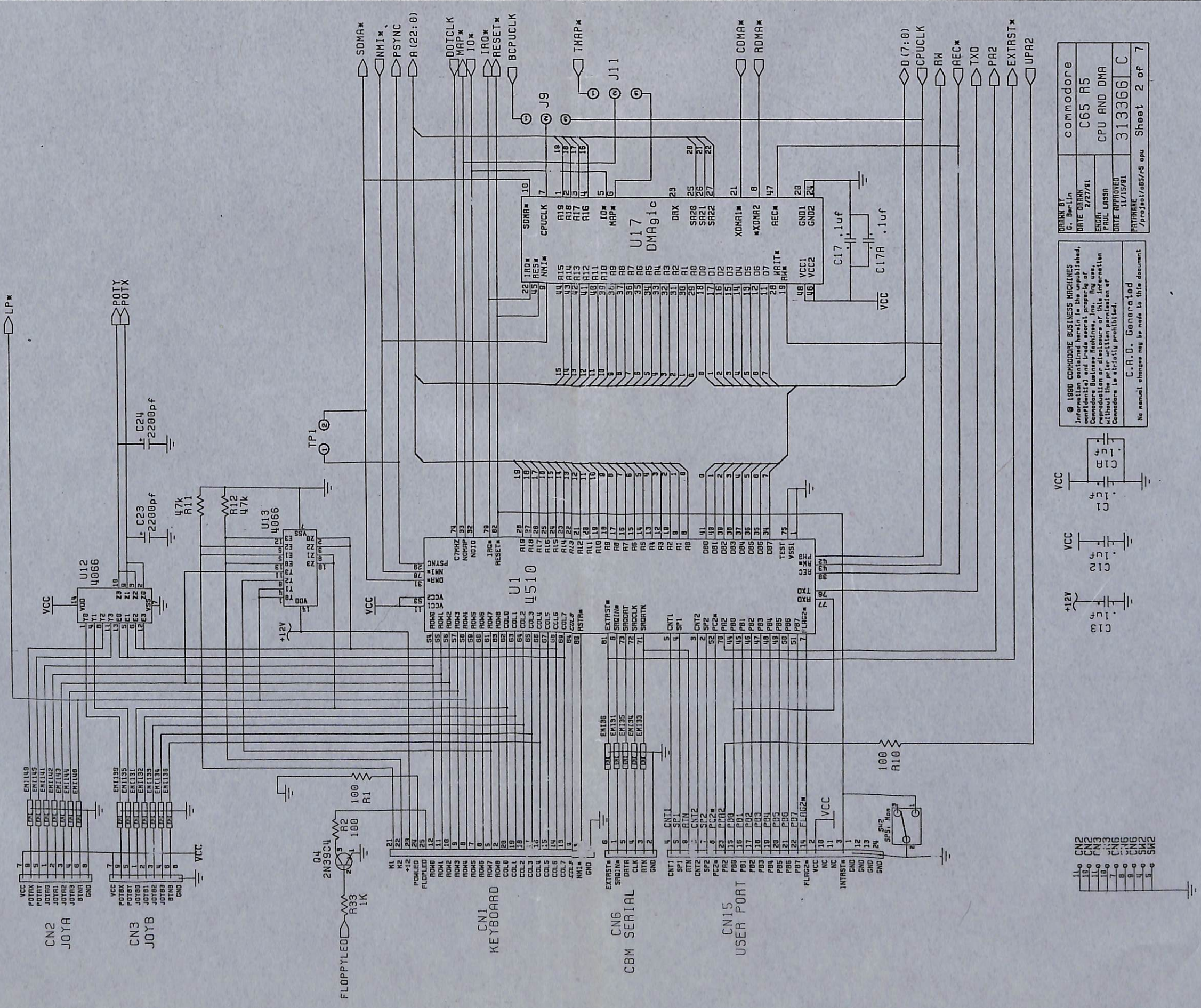


REVISIONS

LTR	ZONE	DESCRIPTION	DATE	APPROVED
B		REDRAWN & REVISED PER ECO 910309 REV 5 PCB	8-21-91	R. BUCK
C		REVISED PER ECO 910464	12-5-91	R. BUCK

UNLESS OTHERWISE SPECIFIED		DRAWN BY: G. BERLIN		commodore	
TOLERANCES ON: DECIMALS		CHKD:	ENGR:	SCHEMATIC	
.X	.XX	.XXX	APPR:	C65 PCB ASSY	
±	±	±		SIZE	REV
MATERIAL:		USED ON	NEXT ASSY	B	C
FINISH:		C65	313365	313366	
SCALE			SHEET 1 OF 7		

© 1991 COMMODORE ELECTRONICS LTD.
 INFORMATION CONTAINED HEREIN IS THE UNPUBLISHED AND CONFIDENTIAL PROPERTY OF COMMODORE ELECTRONICS LTD. USE, REPRODUCTION OR DISCLOSURE OF THIS INFORMATION WITHOUT THE PRIOR WRITTEN PERMISSION OF COMMODORE IS STRICTLY PROHIBITED. ALL RIGHTS RESERVED.

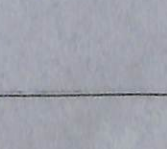
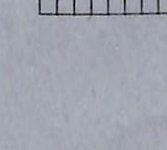
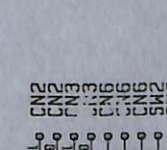
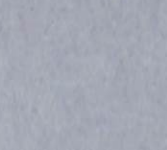
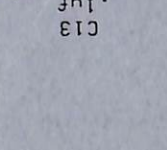
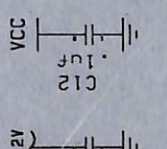
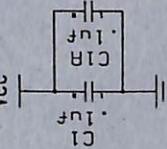


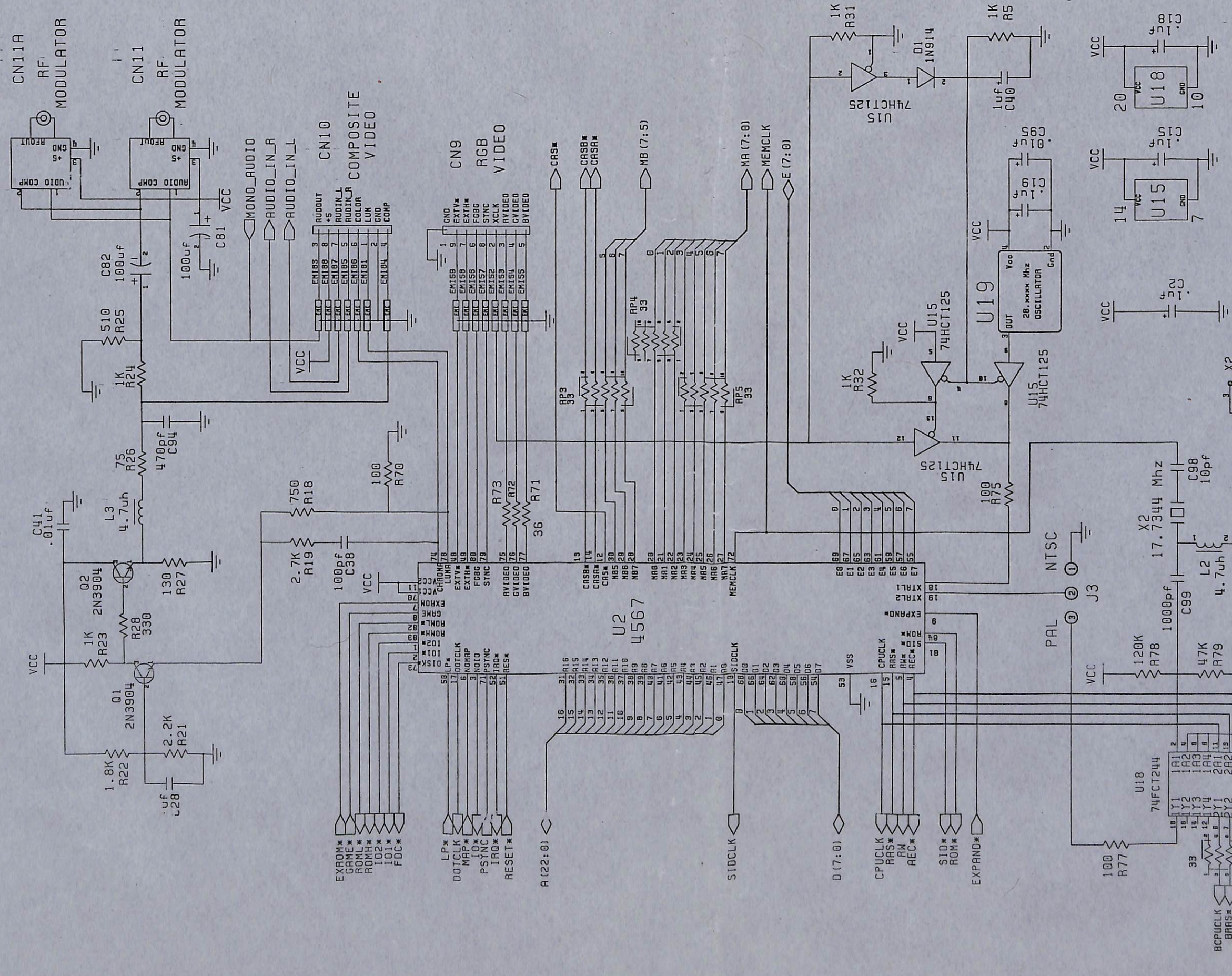
DESIGNED BY	C. BerlIn	COMMODORE
DATE DRAWN	2/27/81	C65 R5
ENGR	PAUL LASSO	CPU AND DMA
DATE APPROVED	3/15/81	313366 C
PARTNAME	/proj/65r/65r/5.gpu	Sheet 2 of 7

© 1980 COMMODORE BUSINESS MACHINES. Information contained herein is the property of Commodore Business Machines, Inc. Any use, reproduction or disclosure of this information without the prior written permission of Commodore is strictly prohibited.

C.A.D. Generated

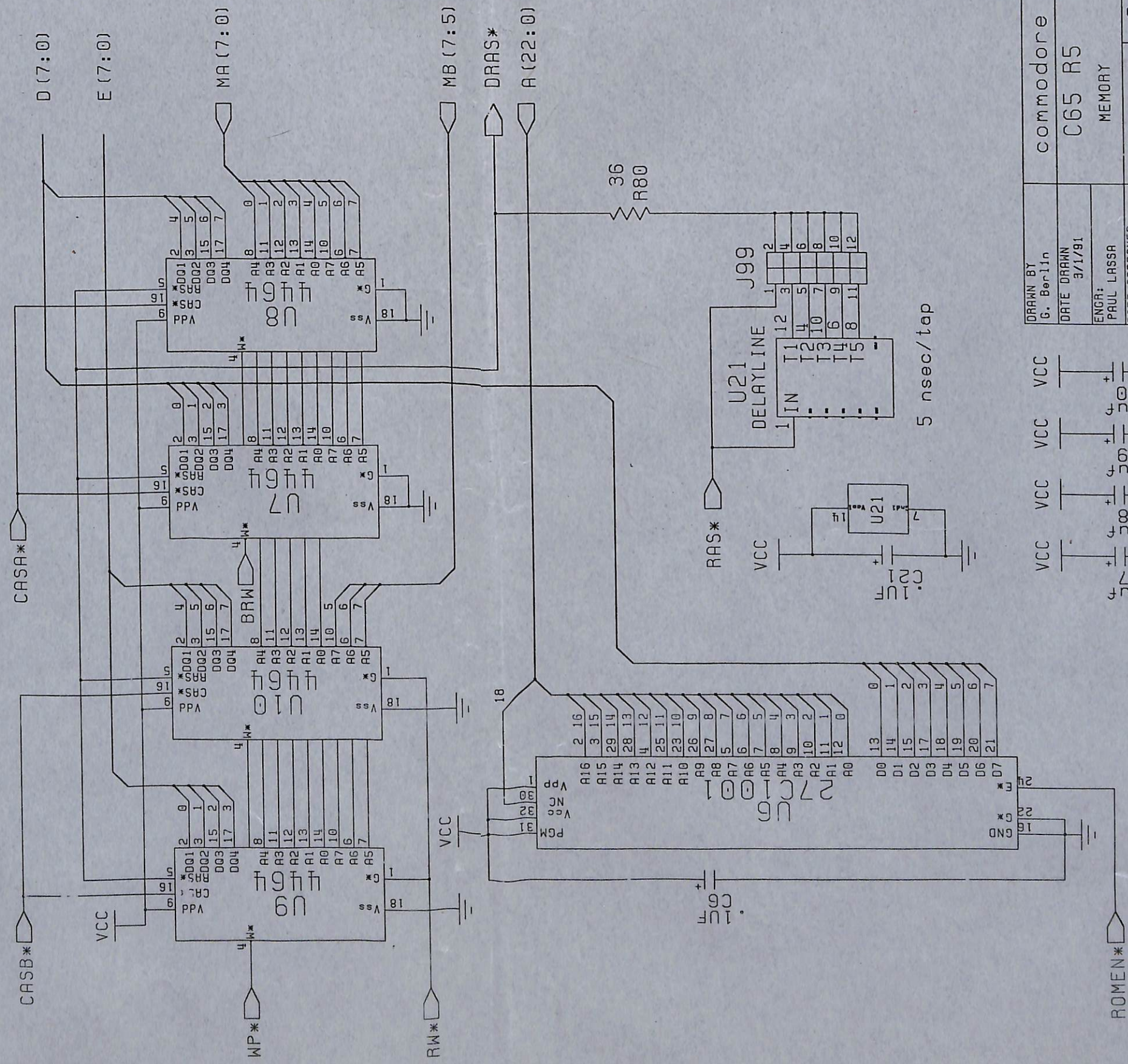
No manual changes may be made to this document



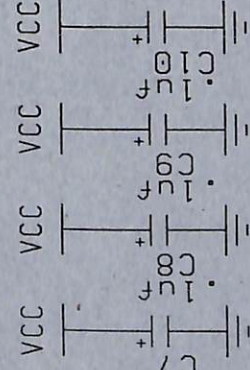


- X2
- CN10
- CN10
- CN10
- CN10
- CN9
- CN11
- CN11
- CN11A
- CN11A

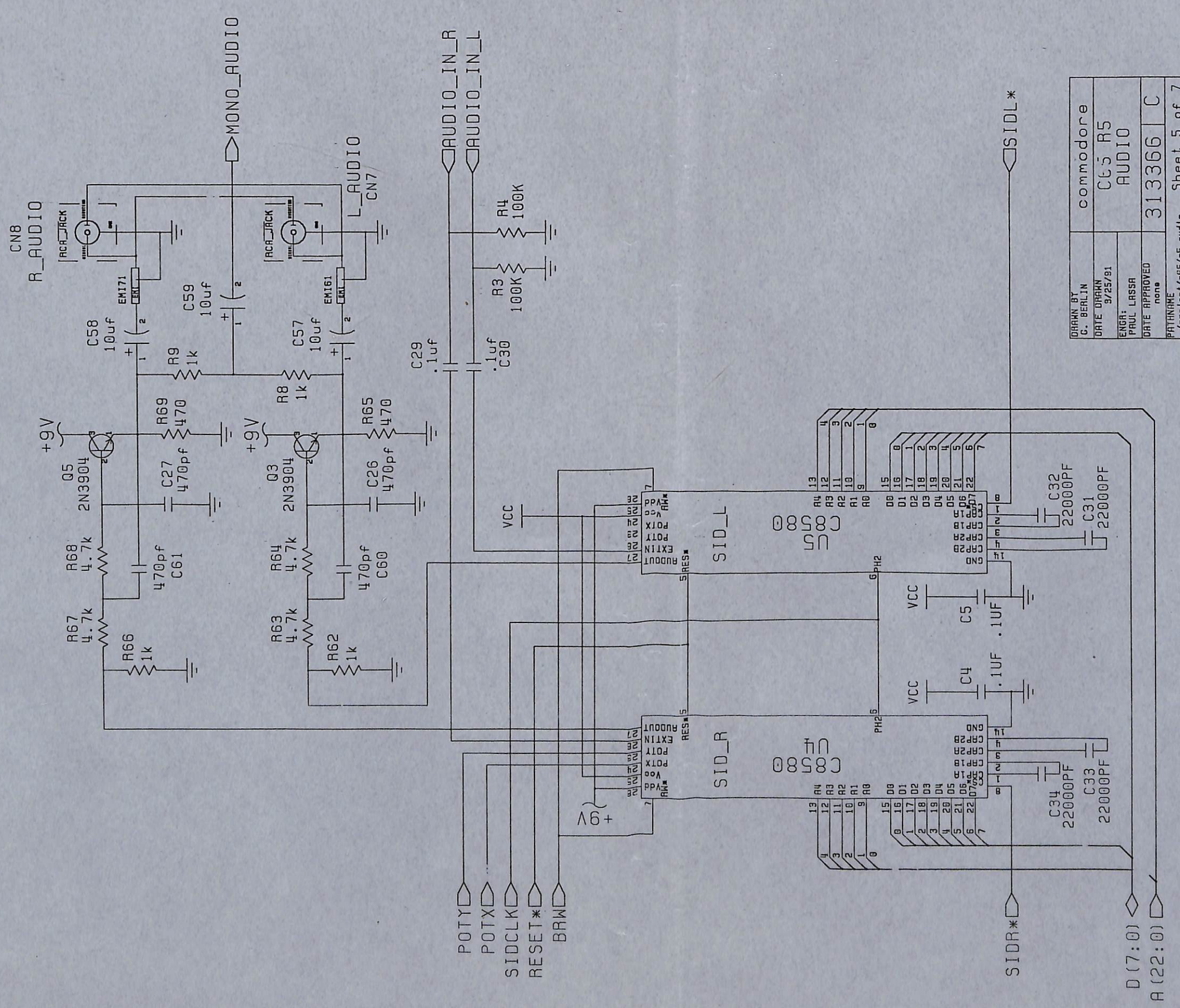
commodore	
DATE DRAWN	C65 R5
2/28/91	VTC & VIDEO
ENGR: LASSA	313366
DATE APPROVED	C
11/15/91	
PATHNAME /proj/ast/c65/r5 vtc	
Sheet 3 of 7	



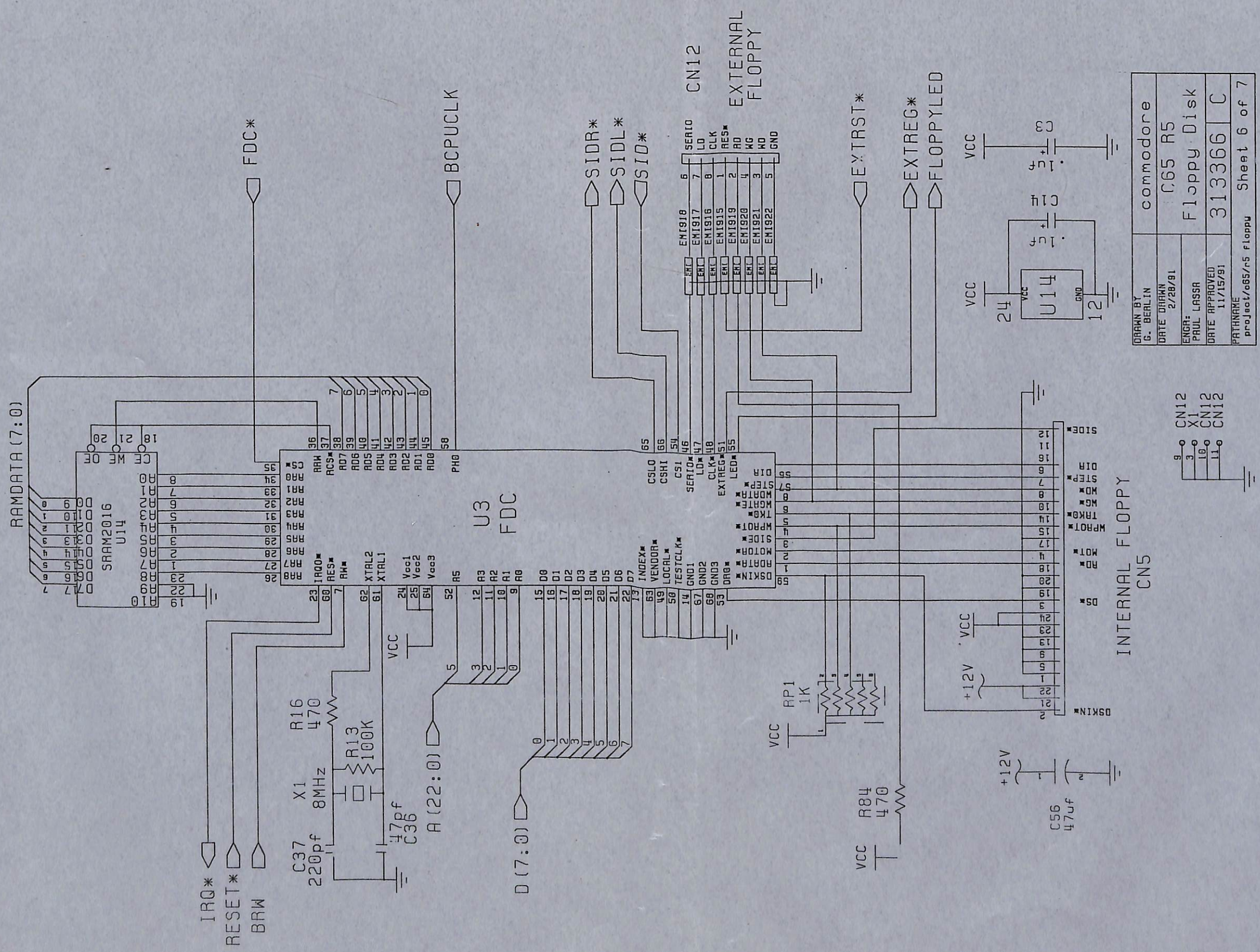
DRAWN BY G. Berlin	commodore
DATE DRAWN 3/1/91	C65 R5
ENGR: PAUL LASSA	MEMORY
DATE APPROVED 11/15/91	313366 C
PATHNAME /projact/c65/r5 memory	
Sheet 4 of 7	



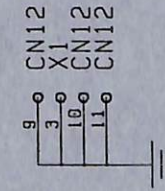
ROMEN*

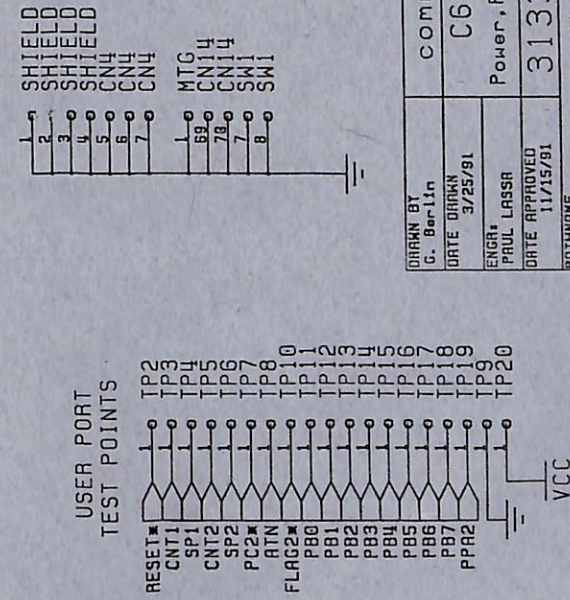
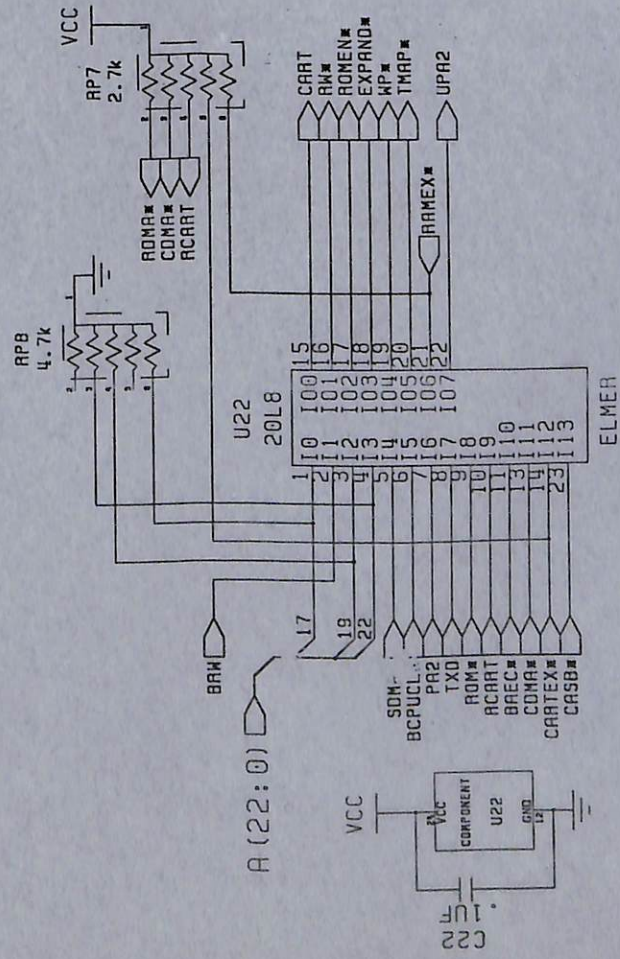
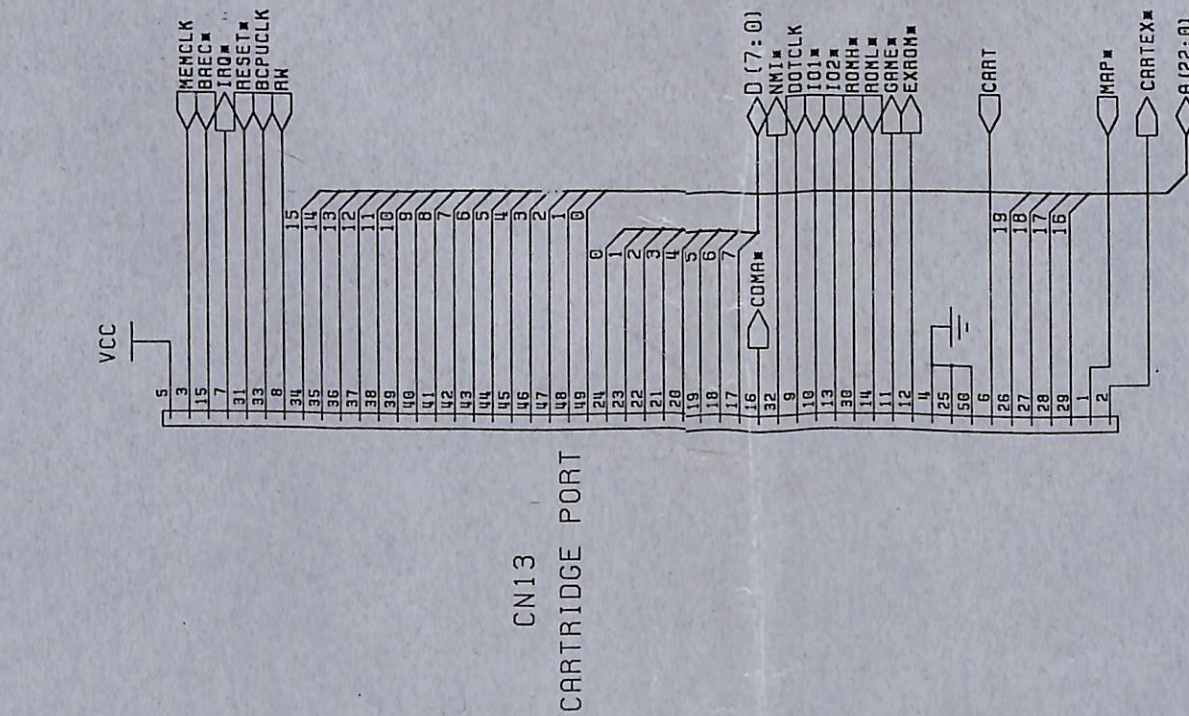
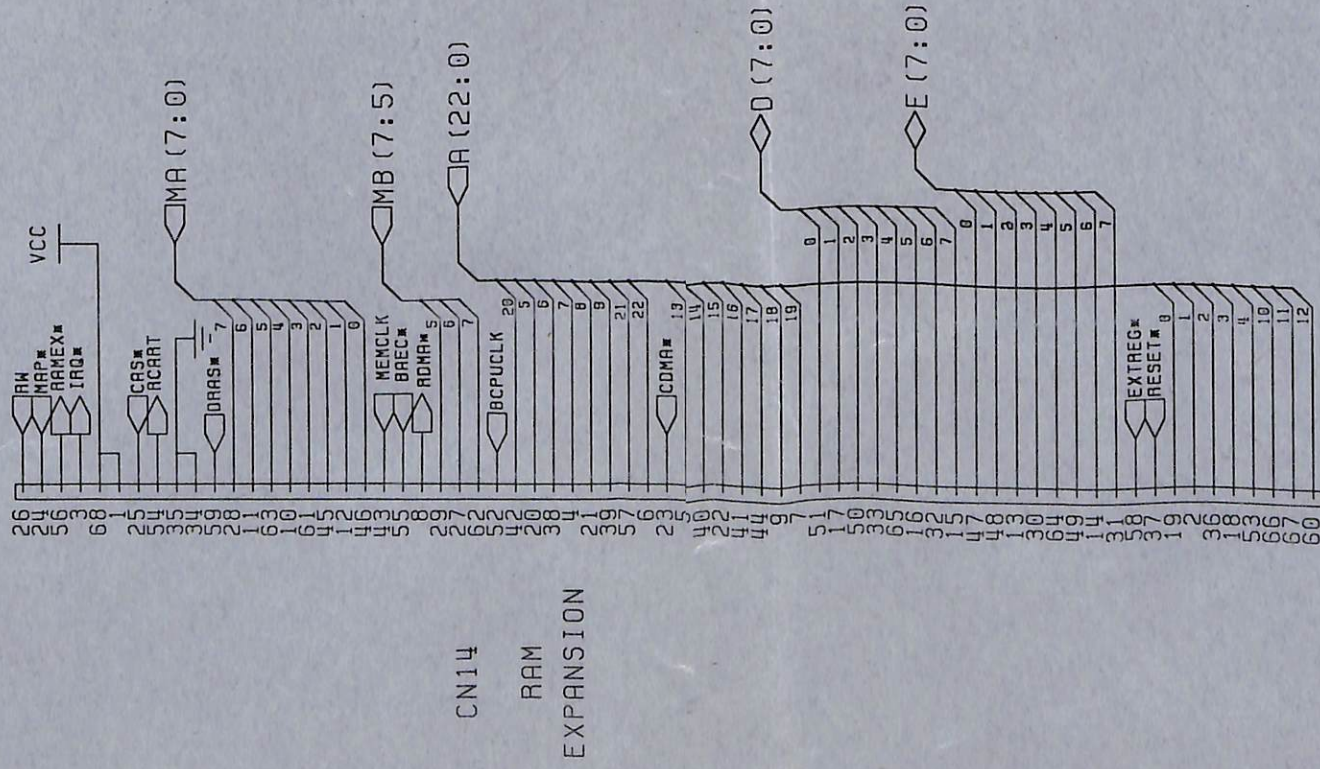
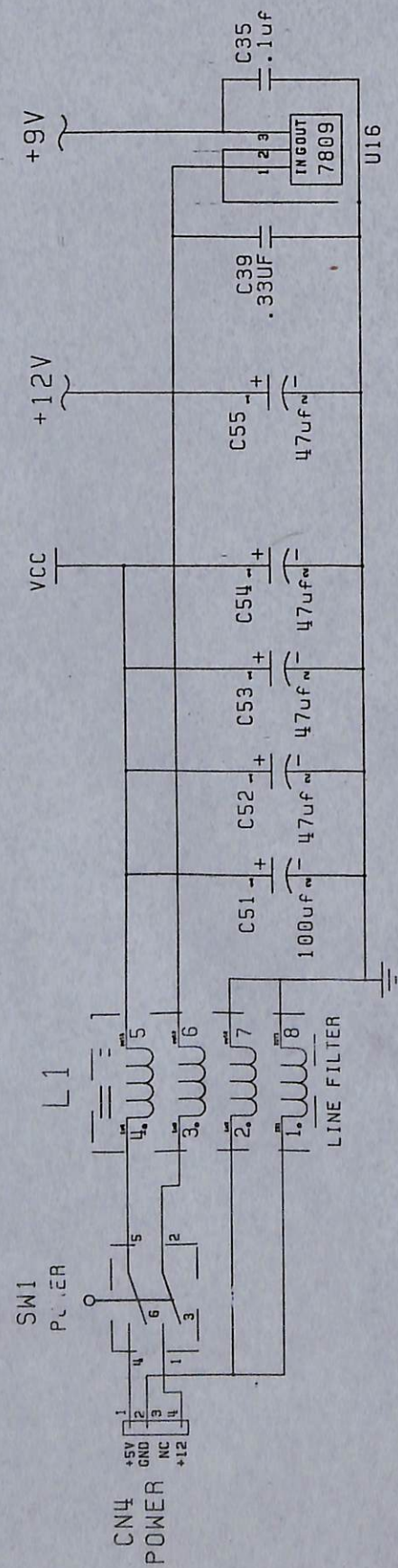


DRAWN BY	C. BERLIN	commodore
DATE DRAWN	3/25/91	C65 R5
ENGR:	PAUL LASSA	AUDIO
DATE APPROVED	none	313366
PATHNAME	/project/65/c5 audio	C
		Sheet 5 of 7



DRAWN BY	G. BERLIN	commodore
DATE DRAWN	2/28/91	C65 R5
ENGR:	PAUL LASSA	Floppy Disk
DATE APPROVED	11/15/91	313366
PATHNAME	proj65/c65/r5 Floppy	Sheet 6 of 7





DIAGN BY	commodore
C. BerLin	C65 R5
DATE DRAWN	Power, PALS, etc...
3/25/91	
ENGR	313366
PAUL LASSA	C
DATE APPROVED	
11/15/91	
PATHNAME	
/project/c65/r5 mlec	Sheet 7 of 7

